

1990 FORD CHASSIS-CAB



FORD CHASSIS-CAB

Chassis-Cabs. Chassis Cutaway Cabs. Stripped Chassis. At Ford, we're proud of the fact that we claim brand leadership in these market segments — based on cumulative published registration data for the 1989 model year through April.

These vehicles are available in three configurations: (1) F-350, 4x2 and 4x4, and F-Super Duty Chassis-Cabs (2) E-350, Cutaway Vans and (3) E-350 and F-Super Duty Stripped Chassis.

FUEL-INJECTED ENGINES

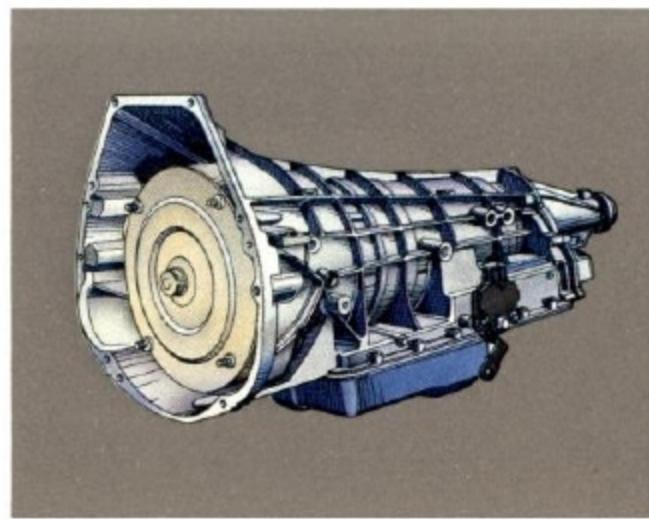
Every gasoline engine offered in this product line has standard multiple-port electronic fuel injection (EFI). These engines have definite advantages over carbureted and throttle body injected types — such as precise fuel metering to each cylinder for good fuel economy, enhanced overall response, plus easy start-up in extreme temperatures.

Gasoline engines include the 4.9L EFI I-6, the 5.8L EFI V-8 and the big 7.5L EFI V-8.

BEST-IN-CLASS DIESEL POWER

Depending on your application, you may want to opt for diesel power. The 7.3L V-8 diesel is ideally suited to applications involving high mileage or lengthy idle times. The 7.3L diesel is rated at 185 hp @ 3300 rpm with 345 lbs.-ft. of torque @ 1400 rpm — making it the most powerful diesel in its class.

For less demanding applications, a 3.4L Turbo Diesel is offered as a Special Order Option on the Econoline Commercial Stripped Chassis.



E4OD TRANSMISSION

Available on most models, the E4OD is Ford's first fully electronically controlled four-speed automatic transmission. It was designed to achieve improved fuel economy, performance and "shift feel" over vacuum controlled systems.

The E4OD is Ford's first fully electronically controlled 4-speed automatic transmission.

The E4OD features an instrument panel-mounted Overdrive Cancel Switch to cancel upshift to the overdrive gear at the operator's discretion — a real plus in certain heavy-duty applications such as trailer towing.



ANTI-LOCK BRAKING

Rear-wheel anti-lock braking — a Ford first in full size light trucks — was introduced in 1987. Standard on all models except F-Super Duty (which has a rear brake proportioning valve), this electronically controlled system is designed to prevent braking-induced rear-wheel lockup under most two-wheel drive operating conditions.

Within this system, pressure is applied and released to the rear brakes with computer-controlled efficiency at a rate faster than what is humanly possible.

A computer continuously monitors the system. Should malfunction occur, a warning light, mounted on the instrument panel, tells the driver that the computer has shut the system down and returned the rear brakes to conventional operation.

Ford Chassis-Cabs are offered in the F-350 and F-Super Duty models, the principle difference being maximum GVW. The F-350 is rated at 11,000-lbs. maximum GVW and the F-Super Duty at 14,500-lbs. maximum GVW.

F-350 CHASSIS-CAB

The F-350 Chassis-Cab is available in two-wheel and four-wheel drive; single rear wheel (SRW) and dual rear wheel (DRW) configurations; with wheelbases of 133 inches (SRW) and 137/161" (DRW).

With the recommended powertrains, payload capacities go up to 6,685 lbs. in the F-350 4x2, dual rear wheel, 137-inch wheelbase model; and up to 6,010 lbs. in the

F-350 4x4, dual rear wheel, 137-inch wheelbase model.

The standard engine in the F-350 4x2 is the 4.9L EFI I-6; options include the 5.8L EFI V-8, the 7.5L EFI V-8 and the 7.3L V-8 diesel. The 7.5L EFI V-8 is standard in F-350 4x4 models; the 7.3L V-8 diesel optional.

The F-350 Regular Chassis-Cab single rear wheel configuration is offered in two trim levels: Custom and XL. Dual rear wheel models can be specified with the Custom, XL and XLT Lariat trims.

F-SUPER DUTY CHASSIS-CAB

The F-Super Duty with a 14,500-lb. GVWR, is designed to fill the gap between the F-350 and Ford's medium-duty truck line.

The F-Super Duty Chassis-Cab is powered by the 7.5L V-8 gasoline engine with the 7.3L diesel option. GCWR's for towing applications go up to 26,000 lbs. with the 7.5L engine and 18,000 lbs. with the diesel.

Continued on page 4.

► The F-Super Duty, with a 14,500-lb. GVWR, is designed to fill the gap between the F-350 and Ford's medium-duty truck line.

Some equipment described or shown in this catalog is available at extra cost or through retail organizations and establishments not connected with Ford Motor Company.



FORD CHASSIS-CAB

Continued from page 2.

The F-Super Duty Chassis-Cab is available in 137 and 161-inch wheelbases and features a maximum 9,280-lb. payload; an 11,000-lb. rear axle; a standard 5-speed manual overdrive transmission (with optional 4-speed automatic overdrive) plus four-wheel power disc brakes.

Ford Chassis-Cabs are available in the F-350 and F-Super Duty with a maximum 14,500-pound GVWR.

The F-Super Duty Chassis-Cab (DRW) is available in Custom trim, XL trim and — new for 1990 — XLT Lariat trim.

AMBULANCE PREP PACKAGES*

F-350: □ Dual rear wheel drive □ 11,000-lb. GVWR □ 4,200-lb. front GAWR (4x2) □ 4,600-lb. front GAWR (4x4) □ 137/161" wheelbase □ Wide-track rear axle (not available with HD Front Suspension Package) or Conventional Track axle □ Requires 7.3L diesel engine and automatic OD transmission □ 165 amp. alternator □ Super engine cooling □ Auxiliary transmission oil cooler □ Air conditioning □ Handling Package □ Auxiliary fuel tank.

F-Super Duty: □ 14,500-lb. GVWR □ 5,000-lb. monobeam front axle □ 5.13 axle ratio □ Requires 7.3L diesel w/automatic OD transmission □ Super engine cooling □ Auxiliary transmission oil cooler □ 165 amp. alternator □ Air conditioning □ Auxiliary fuel tank.

OPTIONAL FEATURES

Major F-350 and F-Super Duty Chassis-Cab options available in Ford Chassis-Cabs within all trim levels include: □ Knitted vinyl bench seats □ Air conditioning □ Auxiliary fuel tank □ Light/Convenience Group □ Handling Package □ Engine block heater □ Electronic AM/FM stereo radio with cassette and digital clock □ Sliding rear window □ Tachometer □ Speed control/tilt steering wheel □ Front license plate bracket □ Heavy-duty front Suspension Package □ Heavy-duty Service Package □ Bright, swing-out recreational mirrors.

*Ford vehicles are suitable for producing ambulances only if equipped with the Ford Ambulance Prep Package. Use of any other vehicle for ambulance manufacture will void the Ford warranty.



▲ Chassis-Cab interior bench seat in Custom trim.

▼ F-Super Duty Chassis-Cab with aftermarket stake body in Colonial White.



▲ F-Series Chassis-Cabs are available in various trim levels. New for 1990 — the F-Super Duty is available with XLT Lariat trim. The speed control/tilt steering wheel, shown here with Custom trim, is a popular option.



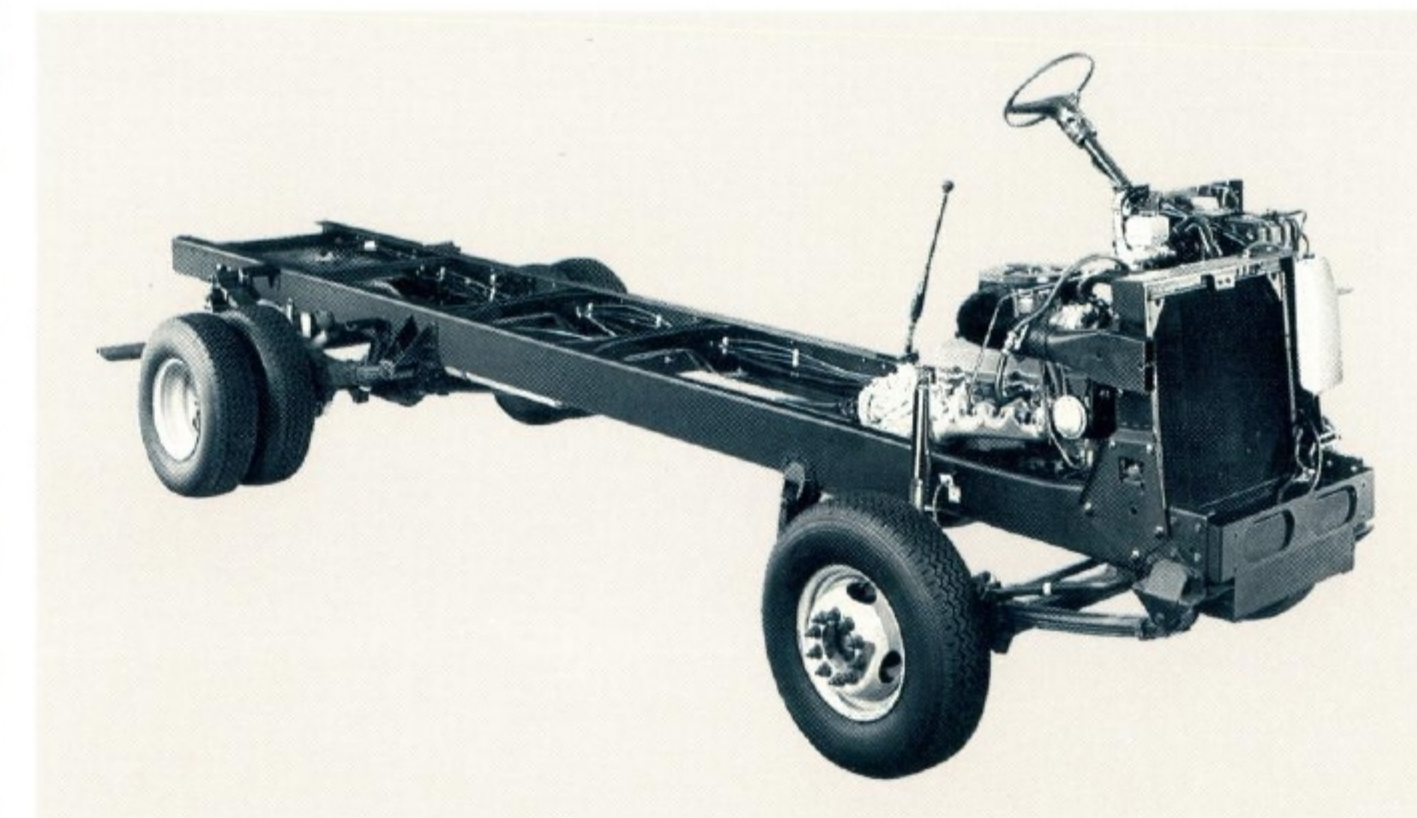
▲ Manual locking hubs on the F-350 4x4 are easy to operate. A simple quarter turn of each hub selector to the "lock" position is all that's needed to engage the hubs before shifting into 4-wheel drive.

F-SERIES SPECIFICATIONS

	F-350 4x2 SRW	F-350 4x2 DRW	F-350 4x4 SRW	F-350 4x4 DRW	F-Super Duty 4x2 DRW	Commercial Stripped 4x2 DRW	Motorhome Stripped 4x2 DRW
Wheelbase (in.)	133	137 161	133	137/161	137/161	158/178	178/208
GVWR (lb.)	Std. 8,800	10,000 11,000	8,800	11,000	14,500	16,000	16,000
	Opt. —	11,000 11,000	—	—	—	—	—
Payload (lb.)	Std. 4,960	5,765 5,605	4,220	6,010/5,915	9,280/9,190	10,530/10,445	10,490/10,380
	Opt. —	6,685 6,520	—	—	—	—	—
Axles (lb.)	Front 4,200	4,200 4,200	5,000	5,000	5,000	6,000	6,000
	(Twin-I-Beam front axles)		(Monobeam front axles)				
Springs (combined rating @ ground)	Rear 6,250	8,250 8,250	6,250	8,250	11,000	11,000	11,000
	Front 2,915	3,365 3,365	3,400	4,100	5,000	6,000	6,000
Shock absorbers	Rear 7,589	8,358 8,358	7,596	8,427	11,000	11,000	11,000
	Twin-tube gas-pressurized						
Engines	Std. 4.9L EFI I-6 (1)	4.9L EFI I-6 (1)	7.5L EFI V-8	7.5L EFI V-8	7.5L EFI V-8	7.3L V-8 Diesel	7.5L EFI V-8
	Opt. 5.8L EFI V-8 7.3L V-8 Diesel 7.5L EFI V-8	5.8L EFI V-8 7.3L V-8 Diesel 7.5L EFI V-8	7.3L V-8 Diesel	7.3L V-8 Diesel	7.3L V-8 Diesel	—	—
Transmissions	Std. —	5-speed manual overdrive					Automatic overdrive
	Opt. —	Automatic overdrive (E4OD)					—
Fuel tank (gal.)	Std. —	19 (single tank)					75
	Opt. —	38 (dual tanks) (5)					—
Steering and brakes	Std. —	Power-assisted					—
Electrical, Battery (amp-hr.)(2)	Std. —	72					72
	Opt. 84, Dual 84 (3)	84, Dual 84 (3)	84, Dual 84 (3)	84, Dual 84 (3)	Dual 84 (3)	Dual 84	—
Alternator (amp.)	Std. 60 (4)	60 (4)	75 (4)	75 (4)	75 (4)	100	100
	Opt. —	—	—	—	—	—	—
Tires (min. rate)	Std. Four LT235/85R-16E All-season	Six LT215/85R-16D All-season	Four LT235/85R-16E All-season	Six LT235/85R-16E All-season			
	Opt. —	Optional tires in sizes to match Payload/GVWR requirements. Use adequate tires for loads and type of service. Consult your Ford Dealer.					—
Wheels (min. rate)	Std. —	8-hole disc, 16x6K					10-hole disc, 16x6K
	Opt. —	—					—

Note: Load rating represents maximum allowable weight of people, cargo and body equipment, and is reduced by weight of optional equipment.

(1) Not available in California. (2) Maintenance-free battery. (3) Dual 84 amp-hr. batteries available and included with 7.3L V-8 Diesel only. (4) 70 amp included with 7.3L V-8 Diesel. 75 amp with all other engines. (5) With 133 WB dual tank capacity is 37.2/38.2 gals.



▲ F-Super Duty Commercial Stripped Chassis with a 16,000-lb. GVWR is available for 1990 in two wheelbases — 158 and 178 inches.

F-SERIES DIMENSIONS

Series	Wheelbase	Overall Length	Cab-Rear Axle Length	Rear Axle-Frame Length	Frame Height (Empty/Loaded)	Axle Height (Loaded)	Tread Width (Front/Rear)	Cab Height (1) (Empty)
F-350 4x2 Single Rear Wheels	133"	203.9"	56.2"	40.5"	26.6/20.4"	8.17"	65.7/64.3"	74.3"
F-350 4x2 Dual Rear Wheels	137" 161"	205.8" 238.8"	38.5" 84.0"	38.5" 47.5"	24.5/20.8" 24.4/20.7"	7.54" 7.54"	65.7/67.1" 65.7/67.1"	73.5" 73.2"
F-350 4x4 Single Rear Wheels	133"	203.9"	56.2"	40.5"	30.7/24.2"	8.17"	67.9/64.3"	78.7"
F-350 4x4 Dual Rear Wheels	137" 161"	205.8" 238.8"	60.0" 84.0"	38.5" 47.5"	28.9/25.1" 28.9/25.1"	8.17" 8.17"	67.9/67.1" 67.9/67.1"	78.0" 78.0"
F-Super Duty Dual Rear Wheels	137" 161"	205.8" 238.8"	60.0" 84.0"	38.5" 47.5"	31.65"/29.7" 31.65"/29.7"	7.61" 7.61"	67.0"/69.7" 67.0"/69.7"	77.5" 77.5"
F-Super Duty Commercial Stripped Chassis	158" 178"	263.3" 283.3"	—	70.0" 70.0"	33.4/26.4" 33.4/26.4"	7.2" 7.2"	71.7/71.7" 71.7/71.7"	—
F-Super Duty Motorhome Stripped Chassis	178" 208"	317.7" 347.7"	—	105.8" 105.8"	35.05/28.0" 35.05/28.0"	7.2" 7.2"	71.7/71.7" 71.7/71.7"	—

(1) Height represents dimensions of a nominal vehicle with no options. Actual height may vary due to production tolerances.

FORD CUTAWAYS AND STRIPPED CHASSIS

Designed for Commercial and RV use, Ford Econoline Cutaways provide you with the front end sheet metal and interior compartment of the Econoline Van. They're the only cutaways on the market with body-on-frame construction plus Twin-I-Beam independent front suspension. Both have dual rear wheels. Both are powered by the standard 5.8L EFI V-8 engine with 7.5L EFI V-8 and 7.3L V-8 diesel options. The E4OD electronically controlled automatic overdrive transmission is offered as an option to the standard C6 automatic transmission. Payloads in the Commercial Cutaway go up to 6,215 lbs.; 6,275 lbs. in the RV.

Econoline RV Cutaway features dual rear wheels and a payload capacity up to 6,275 lbs. (11,000-lb. GVWR).



Econoline 350 Ambulance Prep Package with ambulance body.



Econoline 350 Cutaway Commercial cargo van.

SCHOOL BUS BODY BUILDER PREP PACKAGE

School Bus Body Builder Prep Package, available on E-350 Commercial Cutaway (138-inch wheelbase) and Econoline Vans, includes: ☐ Banded front door main glass (tinted/laminated) ☐ Comfort Ride Suspension (Vans) ☐ Outside mirrors deleted (Vans) ☐ Heavy-duty front springs ☐ Dual electric horns ☐ Swing-out rear door glass (Vans) ☐ RH seat delete ☐ Requires 7.3L diesel engine.

HEAVY-DUTY SERVICE PACKAGE

Available on the E-350 Cargo and Super Vans plus the E-350 Commercial and RV Cutaways, the Econoline Heavy-Duty Service Package includes: ☐ Super engine cooling ☐ Dual electric horns ☐ Front stabilizer bar (Vans) ☐ 100 amp. alternator ☐ Tray for additional battery (gas engines).

AMBULANCE PREP PACKAGE*

RV Cutaway: ☐ 10,500/11,000-lb. GVWR ☐ 4,200-lb. front GAWR ☐ 138"/158"/176" wheelbase ☐ Requires 7.3L diesel engine and E4OD automatic transmission — only powertrain available ☐ 4.10 limited-slip rear axle ☐ 165 amp. alternator ☐ Auxiliary transmission oil cooler ☐ Front air conditioning ☐ Handling Package ☐ Comfort Ride Suspension w/138" WB only ☐ Dual electric horns ☐ Special Vehicle labels.

Van: ☐ 9,000/9,500-lb. GVWR ☐ 4,200-lb. front GAWR ☐ 138" wheelbase ☐ Requires 7.3L diesel engine and E4OD automatic transmission — only powertrain available ☐ 4.10 limited-slip rear axle ☐ 165 amp. alternator ☐ Auxiliary transmission oil cooler ☐ Front air conditioning ☐ Dual electric horns ☐ Handling Package ☐ Swing-out recreational mirrors ☐ Fixed/tinted side/rear cargo door glass ☐ Comfort Ride Suspension Package ☐ Special Vehicle labels ☐ Mid-ship fuel tank shield assembly.

F-SUPER DUTY STRIPPED CHASSIS

The F-Super Duty Stripped Chassis is available for Commercial and Motorhome applications. The 16,000-lb. GVWR F-Super Duty Stripped Chassis for Commercial application is offered in two wheelbases: 158 inches and — new for 1990 — 178 inches.

The Commercial Stripped Chassis is powered by the standard 7.3L diesel combined with a close-ratio 5-speed manual over-

drive transmission. Four-wheel disc brakes make it ideal for multi-stop delivery applications.

ECONOLINE STRIPPED CHASSIS

The Econoline Stripped Chassis — for Commercial or RV application — comes without the body, driver's compartment and front end sheet metal — allowing you to add the aftermarket body of your choice. The Commercial Stripped Chassis is offered in single or dual rear wheels; the RV Stripped Chas-

sis in dual rear wheels only. The Commercial Stripped Chassis is powered by the standard 4.9L EFI I-6 engine. Options include the 5.8L EFI V-8 and the 7.5L EFI V-8 — and as a Dealer Special Order option for select applications — a 3.4L diesel. The RV Stripped Chassis is driven by the 7.5L EFI V-8, for pulling power to spare. **Ford vehicles are suitable for producing ambulances only if equipped with the Ford Ambulance Prep Package. Use of any other vehicle for ambulance manufacture will void the Ford warranty.*

ECONOLINE SPECIFICATIONS

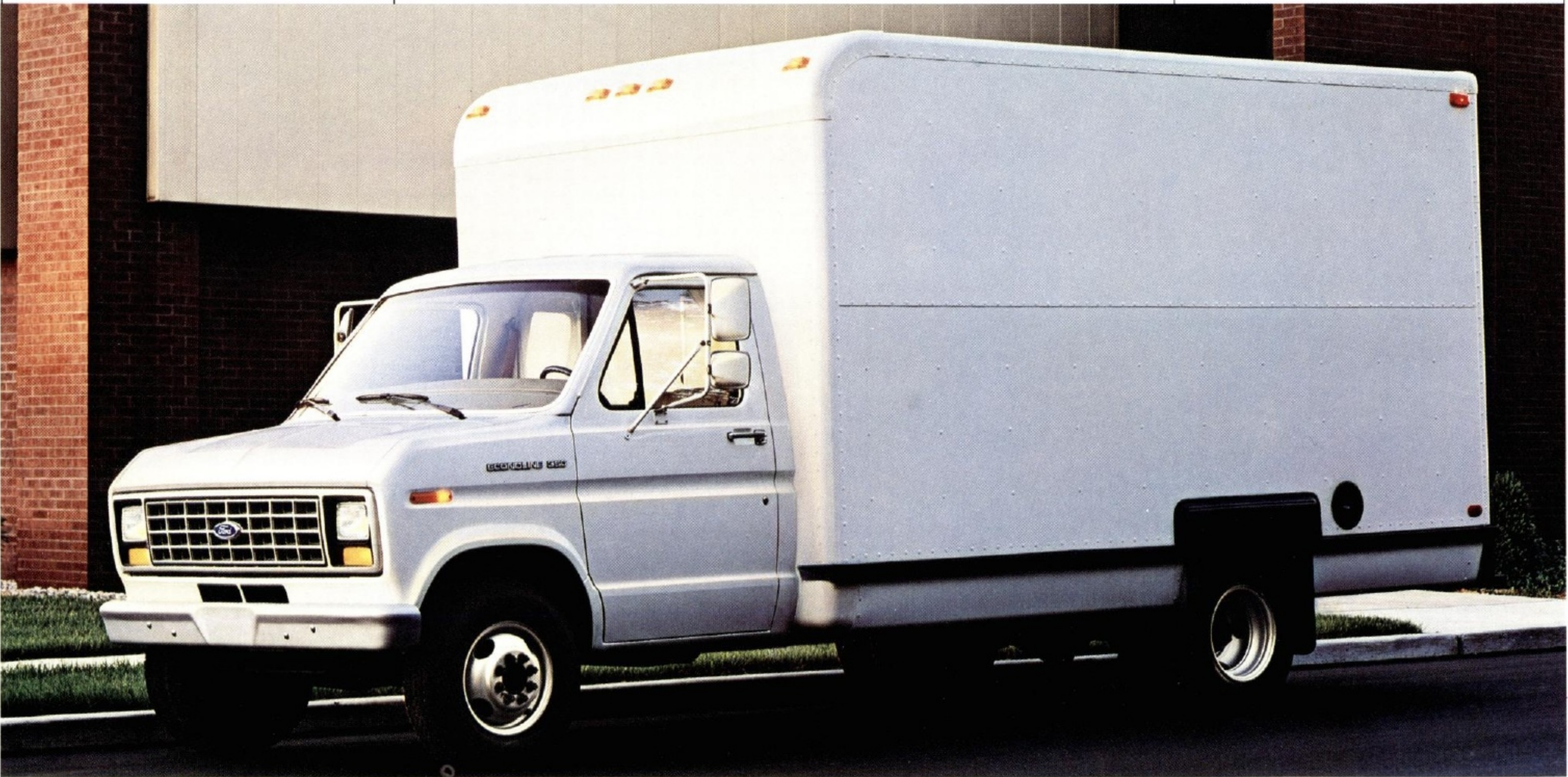
Series	Cutaway		Stripped Chassis	
	Commercial E-350 DRW	RV E-350 DRW	Commercial E-350 SRW DRW	RV E-350 DRW (8)
GVWR Range (lb.)	10,300-10,700 10,600 (2)	10,500-11,000	9,400-10,000	11,500
Payload Range (lb.)	5,855/6,215	5,890/6,265	5,845/6,125	7,475/7,485
Axles (lb.)	Front	4,200	4,200	4,200
	Rear	7,800	7,800	8,000
Springs — Minimum (combined rating @ ground)	Front	3,100	3,250	4,200
	Rear	7,780	7,480	7,800
Steering and Brakes	Power	Power	Power	Power
Electrical, Batteries (amp-hr.)	Std.	71	71	71
	Opt.	81, Dual 83 (diesel) (3)	81, Dual 83 (diesel) (3)	—
Alternators (amp.)	Std.	60 (min.)	60 (min.)	100
	Opt.	75 (7), 100 (4)	75 (7), 100 (4)	—
Engines	Std.	5.8L EFI V-8	4.9L EFI I-6 (1)	7.5L EFI V-8
	Opt.	7.3L V-8 Diesel, 7.5L EFI V-8	7.5L EFI V-8, 3.4L Diesel (2) (6) 5.8L EFI V-8	—
Transmissions	Std.	Automatic (C6)	5-speed manual O.D.	Automatic (C6)
	Opt.	Automatic O.D. (E4OD) (5)	Automatic (C6)	—
Fuel Tank (gal.)	Std.	36.0	36.0	36.0
	Opt.	—	—	—
Tires (min. rate)	Std.	LT215/85R-16D	LT235/85R-16E (SRW) LT215/85R-16D (DRW)	LT215/85R-16D
	Opt.	Optional tire sizes available to match Payload/GVWR requirements. Use adequate tires for loads and type of service. Consult your Ford Dealer.		
Wheels (number) Type/Rim Size	Six 8-hole disc 16x6K	Seven 8-hole disc 16x6K	Four 8-hole disc 16x6K w/SRW; Six w/DRW	Six 8-hole disc 16x6K

Note: Load rating represents maximum allowable weight of people, cargo and body equipment, and is reduced by weight of optional equipment. (1) Not available in California. (2) Available through Dealer Special Order (DSO). (3) Standard and available with 7.3L diesel only. (4) Included with Heavy-Duty Service Package only. (5) 4-speed Auto O.D. (E4OD) available standard with 7.3L diesel. (6) Available w/4-speed manual (wide-ratio) transmission only. (7) Included with Air Conditioning only. (8) Late availability.

ECONOLINE DIMENSIONS

Series	Wheelbase	Overall Length	Rear Wheels	Axle Height Loaded	Frame Height		Cab Height	
					Empty	Loaded	Empty	Loaded
E-350 Commercial Cutaway	138"	232.4"	Dual	7.4"	26.5"	22.3"	79.0"	76.0"
	158"	252.4"	Dual	7.4"	27.2"	21.7"	82.6"	80.1"
	176" (1)	251.5"	Dual	7.4"	25.7"	22.2"	82.1"	80.0"
E-350 RV Cutaway	138"	232.4"	Dual	7.4"	30.8"	26.0"	83.3"	80.0"
	158"	252.4"	Dual	7.4"	30.7"	26.0"	82.9"	79.9"
	176"	251.5"	Dual	7.4"	30.8"	26.0"	83.3"	79.9"
E-350 Commercial Stripped Chassis	138"	233.8"	Single	8.5"	26.1"	23.0"	77.3"	74.2"
	158"	253.8"	Single	8.5"	26.1"	23.0"	77.3"	74.2"
	158"	253.8"	Dual	7.4"	25.5"	22.4"	76.7"	73.6"
	158" (2)	253.8"	Dual	7.4"	25.5"	22.4"	76.7"	73.6"
	176" (2)	251.5"	Dual	7.4"	25.5"	22.4"	76.7"	73.6"

(1) Special Order. (2) RV Stripped Chassis.



SAFETY AND OWNER BENEFITS

Ford Motor Company strongly encourages all passengers to use their safety belts. Ford urges the use of child restraints. Ford's easy-to-install Tot-Guard (for children 20 to 50 pounds) is available at all Ford Dealers. If a child restraint requires a top-tether, Ford trucks provide for special anchorages.



FORD LIFEGUARD DESIGN SAFETY FEATURES

Vehicle operation

☐ Safety rim wheels and load-rated tires ☐ Split service hydraulic brake system with warning light ☐ Corrosion-resistant brake lines ☐ Turn indicator with lane-changing signal feature ☐ Hazard warning flasher ☐ Backup lamps ☐ Side marker/parking lamps coupled with headlamps ☐ Two-speed interval windshield wipers ☐ Windshield washers ☐ Outside rearview mirrors ☐ Glare-reduced instrument panel, windshield wiper arms and windshield pillars ☐ Uniform transmission shift quadrant with safety starting switch (on all vehicles equipped with automatic transmission) ☐ Clutch or neutral interlock for starter motor (on vehicles with manual transmission) ☐ Continuously variable control illumination intensity (instrument panel lighting) ☐ Safety hood latch system ☐ Function-rated windshield defroster system ☐ Tamper-resistant (non-reversing) odometer ☐ 55-mph high-lighted speedometer ☐ Impact-activated fuel pump shut-off switch for electronic fuel-injection engines

Occupant protection

☐ Safety-designed front end structure ☐ Two-position door safety latches ☐ Integral lap and shoulder belts with

automatic retractors for occupants of front outboard seats ☐ Positive seat belt fastening reminder warning light and buzzer for the driver's seat ☐ Lap belts for center front seating positions ☐ Energy-absorbing steering column and steering wheel ☐ Energy-absorbing armrests and safety-designed door handles ☐ Energy-absorbing instrument panel with padding ☐ Energy-absorbing sun visors ☐ Safety glove box latch ☐ Inside yieldaway rearview mirror ☐ Impact-absorbing laminated safety glass windshield ☐ Flame-resistant interior materials ☐ Safety-designed radio control knobs and push buttons

6-YEAR/60,000-MILE POWERTRAIN COVERAGE

Covers you and future owners, with no transfer fee, for 6 years or 60,000 miles, whichever comes first. This limited warranty covers listed powertrain components. Ask your dealer for a copy of this warranty.

6-YEAR/100,000-MILE CORROSION COVERAGE

Corrosion warranty coverage for outer body panel rust-through is 6 years or 100,000 miles, whichever comes first. See your Ford Dealer for a copy of this limited warranty.

SCHEDULED MAINTENANCE

Here are some examples of normal scheduled maintenance intervals for 1990 Ford trucks. For complete maintenance recommendations, refer to the Maintenance Schedule Booklet.

Engine oil change	each 7,500 miles or 6 months
Spark plug change	each 30,000 miles
Air filter replacement	each 30,000 miles
Engine coolant replacement	each 30,000 miles or 3 years



Participating Ford Dealers offer the Lifetime Service Guarantee, which guarantees their customer-paid work on your Ford vehicle for as long as you own it. A covered repair is paid for once. If it ever has to be fixed again, the repairing dealer will fix it free. Ask to see a copy of this Lifetime Service Guarantee when you visit your participating Ford Dealer.



Optional Ford Extended Service Plans cover major components on new Ford cars and light trucks for longer than the vehicle's basic warranty. Your Ford Dealer has full details.



Genuine Ford and Motorcraft original equipment replacement parts meet the same high standards as those installed in production.

OPTIONS AVAILABILITY

Options shown or described in this catalog are available at extra cost and may be offered only in combination with other options or subject to additional ordering requirements or limitations.

PRODUCT CHANGES

Ford Division reserves the right to change product specifications at any time without incurring obligations.

"ASK YOUR FORD DEALER"

Following publication of this catalog, certain changes in standard equipment, options, prices and the like, or product delays, may have occurred which would not be included in these pages. Your Ford Dealer is your best source for up-to-date information.

IMPORTANT INFORMATION

Many of the items shown on vehicles in this publication are available through retail organizations and establishments not connected with Ford Motor Company. Availability, price, quality and durability of these items rest solely with the respective manufacturers and their sales organizations, and Ford assumes no responsibility for their use.

Federal highway regulations such as those issued by the National Traffic Safety Administration, the Environmental Protection Agency or the Federal Highway Administration or issued pursuant to the Occupational Safety and Health Act (OSHA), and/or state laws and regulations may require additional equipment for the particular use you intend for the vehicle. It is the buyer's responsibility to determine the applicability of such laws and regulations to the buyer's intended use for the vehicle, and to arrange for the installation of the required equipment. Your Ford Dealer has information about the availability of many items of equipment which can be ordered for the vehicle.

Specifications, illustrations and descriptive materials herein were accurate as known at the time this publication was approved for printing. Ford Division reserves the right to discontinue models or options at any time or change specification and materials, equipment and design without notice and without incurring obligation. All options or accessories illustrated referred to as optional or available are at extra cost. Some options are required in combination with other options. For the price of the model with the equipment you desire or for verification of specifications contained herein, see your Ford Dealer.



Best-Built American Trucks.

This is based on an average of consumer-reported problems in a series of surveys of '81-'89 models designed and built in North America.