

# 1990 FORD ECONOLINE AND AEROSTAR VANS





## 1990 FORD ECONOLINE VAN

For the past 25 years, Econoline Van has been the total sales leader in the full-size cargo van field (based on total cumulative calendar year registrations from 1964 through April, 1989). And it's easy to understand. Econoline offers such a wide selection of sizes and capacities that finding the right combination of cargo volume, payload and power for most needs is virtually assured.

Among full-size vans, only Ford Econoline has the advantages of "out-front" design. The engine is located forward of the passenger compartment, providing more than a foot of clearance between the engine cover and each front seat for convenient access to the rear cargo area.

There are other benefits. Because of the forward location of the front wheelhousings, entering or leaving by the front doors is convenient. And, perhaps most important of all, 24 key service items are located under the hood for easy maintenance.

Econoline's out-front design is a major feature to keep in mind as you consider the purchase or lease of a full-size van. Its great convenience can put you ahead in the business of saving time and money.

And with Econoline, you can choose the van style that best suits the requirements of your tasks. The standard cargo van comes without cargo area side or rear windows. You can, however, order optional side/rear cargo door windows with either fixed or swingout



◀ The optional engine cover console adds organization and convenience to any Econoline.

◀ Speed control and the tilt steering wheel comprise another popular Econoline option.

▶ Econoline E-350 shown in Desert Tan Metallic.

tinted glass. Or order the Windows All Around option.

There's also a choice of side cargo door styles. The standard sliding cargo door (40.3-inch effective opening width) provides outstanding convenience in tight spaces. Hinged cargo doors (42.5-inch effective opening width) can be chosen in place of the sliding door at no extra cost.

The standard Econoline series is outfitted for comfort and capability with power steering, power brakes with new rear anti-lock system, pivoting vent windows, bright low-mount swingaway mirrors and more. Econoline XL adds features like bright trim, front carpeting, full door trim, premium vinyl seat trim and interval wipers.





# RUGGED ECONOLINE

For a full-size van with the advantages of body-on-frame construction, the only choice is Ford Econoline. The parallel ladder-type frame has full-length, heavy-gauge side rails with up to six crossmembers for a minimum yield strength of 36,000 pounds per square inch (psi).

## ECONOLINE POWER

Every Econoline gas-powered engine is equipped with multiple-port electronic fuel injection (EFI), which provides smooth overall

## The standard high-torque 4.9L I-6 is the biggest 6-cylinder engine in its class.

operation and easy starting. The standard high-torque 4.9L I-6 is the biggest 6-cylinder engine in its class.

There is a wide choice of V-8 power as well. The 5.0L EFI, optional in E-150 and E-250, is the most powerful small V-8 in a full-size cargo van. For heavy-duty applications such as trailer towing, the 5.8L EFI V-8 allows for a maximum 13,000-lb. gross combination weight rating (GCWR).

For the big Class IV trailers, the high-cube 7.5L EFI engine (available in E-350) is the biggest V-8 in a full-size cargo van. It allows for a GCWR of 18,500 pounds and

a gross trailer weight of 10,000 pounds.

The largest and most powerful diesel engine available in a full-size van also belongs to Econoline. The 7.3L diesel delivers plenty of muscle for trailer towing, allowing for a 14,000-lb. GCWR and a gross trailer weight rating of 8,400 pounds.

Econoline's standard transmission is a 3-speed automatic (49 states). Optional are two 4-speed automatic overdrives, including a new electronic version for selected E-150 and E-250 models.

## NEW REAR ANTI-LOCK BRAKES

This electronically controlled system, standard with all Econolines, is designed to inhibit complete rear wheel lockup under most operating conditions. An electronic module activates solenoids to modulate rear brake pressure any time impending rear-wheel lockup is detected by the system. The result is more controlled rear braking.

## TWIN-I-BEAM FRONT SUSPENSION

With the Twin-I-Beam suspension system, each wheel has its own forged I-beam axle and separate big coil spring to handle rough road conditions independently. The coil springs are computer-selected to match the gross vehicle weight rating (GVWR) and the weight of options. Twin-I-Beam is designed for ruggedness as well as outstanding ride.



## ECONOLINE PAYLOAD PACKAGE SELECTOR

| Series | WB      | Payload (1) | GVWR      | Tires (2)        |
|--------|---------|-------------|-----------|------------------|
| E-150  | 124"    | 1,560 lb.   | 5,500 lb. | P215/75R15SL     |
|        |         | 2,125 lb.   | 6,100 lb. | P225/75R15SL (3) |
|        |         | 1,365 lb.   | 5,500 lb. | P215/75R15SL     |
|        | 138"    | 1,950 lb.   | 6,100 lb. | P225/75R15SL (3) |
|        |         | 2,285 lb.   | 6,500 lb. | P235/75R15XL (3) |
|        |         | 1,775 lb.   | 6,200 lb. | P235/75R15XL     |
| E-250  | 138" SV | 2,640 lb.   | 7,200 lb. | LT215/85R16D     |
|        | 138"    | 3,290 lb.   | 7,900 lb. | LT215/85R16E (3) |
|        | 138" SV | 3,350 lb.   | 8,100 lb. | LT215/85R16E     |
| E-350  | 138"    | 4,635 lb.   | 9,400 lb. | LT235/85R16E     |
|        | 138" SV | 4,070 lb.   | 9,000 lb. | LT235/85R16E     |

SV = Super Van. (1) Maximum allowable weight of people, cargo and equipment. (2) Minimum required. (3) Required at extra cost.

## ECONOLINE CHASSIS MODELS AND RV CONVERSIONS\*

The Econoline Commercial Cutaway Chassis is the workhorse of the fleet. It features the familiar Econoline cab up front and a full frame for toughness. The Commercial Stripped Chassis comes without a cab/body to accept a com-

plete aftermarket custom setup.

And if you're thinking of a custom van conversion, aftermarket specialists not affiliated with Ford Motor Company can modify your Econoline for a home away from home in a variety of sizes.

*\*See your dealer or the Ford Chassis-Cab catalog for more detailed information.*



▲ Econoline XL bucket seats shown in Scarlet Red.

◀ Econoline Van shown in Colonial White. There's a choice of side cargo door styles. The standard sliding cargo door (shown) provides outstanding convenience in tight loading spaces.

## ECONOLINE SPECIFICATIONS

| Equipment   |                   | E-150                                 | E-250                              | E-350                             |
|---|-------------------|---------------------------------------|------------------------------------|-----------------------------------|
| Powerteams  | Std.              | 4.9L EFI I-6/3-Spd. Auto. (1)         | 4.9L EFI I-6/3-Spd. Auto. (1)      | 4.9L EFI I-6/3-Spd. Auto. (1)     |
|   | Opt.              | 4.9L EFI I-6/4-Spd. Auto. E40D (2)(3) | 4.9L EFI I-6/4-Spd. Auto. E40D (3) | 5.8L EFI V-8/3-Spd. Auto. (3)     |
|   |                   | 5.0L EFI V-8/4-Spd. Auto. AOD (4)     | 5.0L EFI V-8/4-Spd. Auto. AOD      | 5.8L EFI V-8/4-Spd. Auto. E40D    |
| Fuel capacity (gal.):   |                   |                                       |                                    |                                   |
|   | 124" WB           | Std. 18.0                             | —                                  | —                                 |
|   | 138" WB           | Std. 22.0                             | 22.0                               | 22.0                              |
| Electrical:   |                   |                                       |                                    |                                   |
|   | Battery (amp-hr.) | Std. 71                               | 71                                 | 71 (dual 83 with 7.3L Diesel)     |
|   | Alternator (amp.) | Std. 70/60 (5)                        | 70/60 (5)                          | 81 auxiliary (except 7.3L Diesel) |
| Steering  |                   |                                       |                                    |                                   |
|   | Brakes            | Std. Power                            | Power                              | Power                             |
|   | Construction      | Std. Power/rear anti-lock             | Power/rear anti-lock               | Power/rear anti-lock              |
| Shock absorbers   |                   |                                       |                                    |                                   |
|   | Std.              | Body-on-frame                         | Body-on-frame                      | Body-on-frame                     |
|   | Opt.              | Front/rear gas-pressurized            | Front/rear gas-pressurized         | Front/rear gas-pressurized HD     |
| Springs (combined rating @ ground):   |                   |                                       |                                    |                                   |
|   | Front coil        | Std. Heavy-duty (7)                   | Heavy-duty (7)                     | —                                 |
|   | Rear leaf         | Std. Computer-selected                | Computer-selected                  | Computer-selected                 |
| Tires (tubeless)  |                   |                                       |                                    |                                   |
|   | Std.              | Single-stage 2,945 lbs. (8)           | Dual-stage 4,265 lbs. (9)          | Dual-stage 6,545 lbs.             |
|   | Opt.              | Heavy-duty (10)                       | Heavy-duty (10)                    | —                                 |
| Optional tires in sizes to match Payload/GVWR requirements. Use adequate tires for loads and type of service. Consult your Ford Dealer. |                   |                                       |                                    |                                   |
|   | Std.              | P215/75R15SL all-season (11)          | LT215/85R16D all-season (12)       | LT235/85R16E all-season           |
|   | Opt.              |                                       |                                    |                                   |

AOD = Automatic Overdrive. E40D = Electronic Automatic Overdrive. Note: All batteries are maintenance-free except 81 amp-hr. auxiliary, available only with gas engines. (1) Not available in California. (2) Not available with 124" wheelbase. (3) Standard powertrain combination in California with 124" wheelbase. (4) 5.0L EFI V-8 engine with air conditioning only. (5) 70 amp with 4.9L EFI I-6 only. (6) Available with 7.5L V-8 gas engine with air conditioning only. (7) Available in optional handling package, heavy-duty service package and trailer towing package only. (8) 2,950 lbs. with 138" wb; 3,985 lbs. with Super Van. (9) 5,545 lbs. with Super Van. (10) Available in optional heavy-duty service package. (11) P235/75R15XL with Super Van. (12) LT215/85R16E with Super Van.



# 1990 FORD AEROSTAR

With the extended-length model, cargo- or window-van body-style, dual rear doors or one-piece liftgate, and now with 2- or 4-wheel drive,\* Aerostar offers more choice than ever when it comes to matching your vehicle to your special job requirements.

## ELECTRONIC 4-WHEEL DRIVE\*

The Aerostar 4-wheel-drive model in either regular- or extended-length versions provides sophisticated, computerized performance. It's a full-time system that's completely controlled by a microprocessor, and it requires no driver input whatsoever. It's always on, always adjusting the flow of engine power and torque to the wheels, providing optimized 4-wheel traction regardless of road conditions or weather. It's a system that advances the state of the art in four-wheel-drive technology.

## NEW REAR ANTI-LOCK BRAKES

The standard rear anti-lock brake system is designed to inhibit complete rear-wheel lockup under most operating conditions. An electronic module activates solenoids to modulate rear brake pressure any time impending rear-wheel lockup is detected by the system. The result is more controlled rear braking.

## AEROSTAR CAPABILITY

The 3.0 liter multi-port EFI V-6 standard engine delivers 145 horsepower @ 4,800 rpm and 165

lbs.-ft. of torque @ 3,600 rpm (new 4.0 liter V-6 engine with 4WD\*). The fuel injection system, controlled by Ford's sophisticated EEC-IV computer, optimizes power and provides precise fuel distribution for efficiency.\*\*

With the 3.0 liter V-6 engine, choose the standard 5-speed manual overdrive transmission or

the optional 4-speed automatic overdrive (a new heavy-duty 4-speed automatic overdrive is standard with the 4.0 liter V-6 engine\*). With V-6 power and with the load weight over the driving wheels, a properly equipped Aerostar Van (including the optional trailer towing package) can tow up to 5,000 pounds — 2½ tons.† And with the 4-

wheel-drive Aerostar,\* driver control of that big towing capability is enhanced under most road conditions.

The standard payload rating for the 2WD regular-length van is 1,600 pounds and can be increased to as much as 1,950 pounds with the optional payload package.

Aerostar carries lots of cargo with

its 140.4-cubic-foot volume. The extended-length model adds 15 inches of cargo floor to the rear and puts another 28 cubic feet of space at your disposal. It also has a 101.4" load floor, the longest among mini-vans.

The large sliding side cargo door makes loading and unloading in tight places convenient. In the rear,

## AEROSTAR SPECIFICATIONS

|                   |   |
|-------------------|---|
| Engine            | 3.0 liter, electronic port-type fuel injection (standard); 4.0 liter V-6 optional* with extended-length models and included with 4WD*                           |
| Transmission      | 5-speed manual overdrive standard; 4-speed automatic overdrive optional with 3.0 liter V-6; heavy-duty 4-speed automatic overdrive standard with 4.0 liter V-6* |
| Clutch linkage    | Hydraulic; self-adjusting   |
| Fuel tank         | 21 gallons  |
| Battery           | 72 amp-hr. maintenance-free   |
| Alternator        | 75 amp  |
| Steering          | Power rack-and-pinion system; no-lube linkage   |
| Brakes            | Power front disc/rear drum with rear anti-lock system   |
| Front suspension  | Independent "short/long arm" (SLA) design; springs computer-selected to match GVWR  |
| Rear suspension   | Semi-floating coil-link design; variable-rate tapered coil springs  |
| Shock absorbers   | Twin-tube nitrogen gas pressurized  |
| Body construction | Unitized  |
| Tires             | P215/70R14SL steel-belted radials, all-season tread design (WSW optional)   |
| Wheels            | 5.5 JJ, 5-hole; 6.0 JJ, 5-hole for 2WD extended-length model (forged aluminum optional)   |

\*Late availability.

## AEROSTAR PAYLOAD PACKAGE SELECTOR

| Bodystyle       |         | Payload (1) | GVWR      | Tires         |
|-----------------|---------|-------------|-----------|---------------|
| Regular Length  | 2WD     | 1,600 lb.   | 4,820 lb. | —             |
|                 | 4WD (2) | 1,950 lb.   | 5,200 lb. | P215/75Rx14SL |
| Extended Length | 2WD     | 1,700 lb.   | 5,200 lb. | —             |
|                 | 4WD (2) | 1,600 lb.   | 4,920 lb. | —             |
|                 |         | 1,875 lb.   | 5,200 lb. | P215/75Rx14SL |
|                 |         | 1,675 lb.   | 5,240 lb. | —             |

(1) Maximum allowable weight of people, cargo and equipment. (2) Late availability.

the large cargo port has no step to get in your way.

Regular-length Aerostar is shorter than some mini-vans, which can be an advantage when maneuvering into a tight space or pulling into the garage. And with its standard dual rear cargo doors, Aerostar can get conveniently close to docks, aircraft — many other kinds of loading facilities.

\*Not available at the beginning of the 1990 model year. See your dealer for availability.

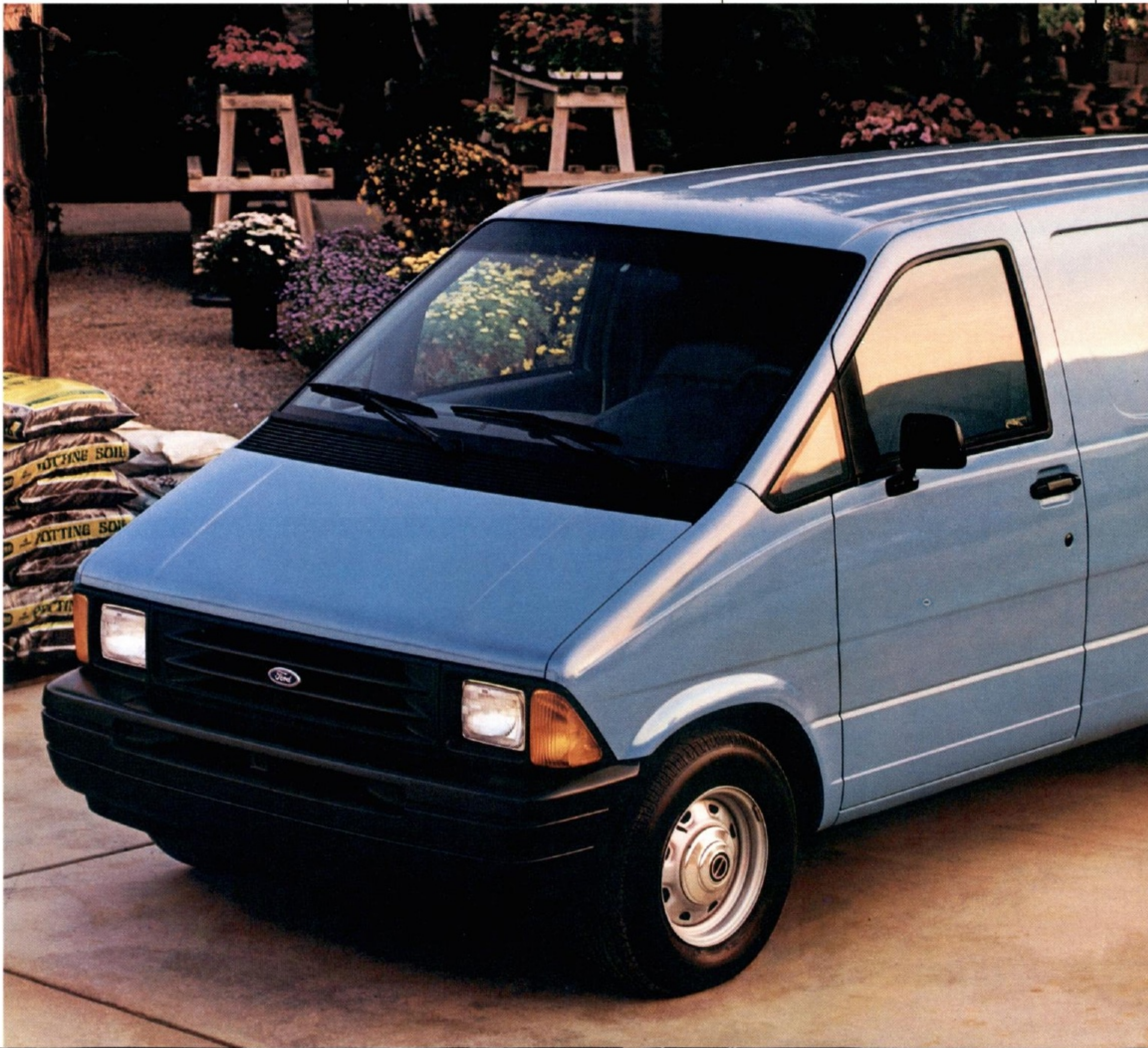
\*\*See Fuel Economy, page 11.

†Reduced by weight of passengers and cargo in the towing vehicle.

◀ Aerostar Extended-Length Van shown in Spinnaker Blue.

▶ Aerostar gives you a choice of standard dual rear doors or a one-piece liftgate (optional at no charge).

▶ The Aerostar interior shown in Crystal Blue.





## PREFERRED EQUIPMENT PACKAGES AND OPTIONS

**P**referred Equipment Packages are groups of popular features that make it easy to order a well-equipped Aerostar or Econoline. By grouping these desirable items, we simplify the ordering procedure. All you have to do is: 1) Decide on the trim level (Standard or XL for Econoline. Aerostar has just one.); 2) Select the Preferred Equipment Package that includes the features you want.

For example, if you decide on an E-250 Econoline with standard trim, you can choose between package 750A and 751A. Package 750A is a well-equipped cargo van. It's also the first E-250 standard trim package. Package 751A adds air conditioning, auxiliary fuel tank and light and convenience group.

In addition to the Preferred Equipment Packages, there is a range of individual options which allow you to equip your vehicle even more to your particular needs.

Like the contents of the Preferred Equipment Packages, individual options are subject to change during the year.

| ECONOLINE OPTIONS AND PREFERRED EQUIPMENT PACKAGES<br>■ = Included in Package 0 = Optional | E-150        |            | E-250/350    |      |            | E-350<br>Special<br>Value<br>Std.<br>754A |
|--|--------------|------------|--------------|------|------------|---|
|  | Std.<br>740A | XL<br>741A | Std.<br>750A | 751A | XL<br>752A |   |
| P225/75Rx15SL BSW all-season tires   | 0            | ■          |              |      |            |   |
| Electronic AM/FM stereo radio with clock   | 0            | ■          | 0            | 0    | 0          | 0   |
| Front air conditioning   | 0            | 0          | 0            | ■    | 0          | 0   |
| Auxiliary fuel tank  | 0            | 0          | 0            | ■    | 0          | ■   |
| Light and convenience group (1)  | 0            | 0          | 0            | ■    | 0          | 0   |
| Speed control and tilt steering wheel  | 0            | 0          | 0            | 0    | 0          | 0   |
| Handling package (2)   | 0            | 0          | 0            | 0    | 0          |   |
| Fixed side and rear cargo door glass   | 0            | 0          | 0            | 0    | 0          | 0   |
| Power door locks and windows   | 0            | 0          | 0            | 0    | 0          | 0   |
| Chrome rear step bumper  | 0            | 0          | 0            | 0    | 0          | ■   |
| Chrome bumpers   | 0            |            | 0            | 0    |            | ■   |
| Heavy-duty service package (3)   | 0            | 0          | 0            | 0    | 0          | ■   |
| <b>Seat and trim</b>   |              |            |              |      |            |   |
| Dual cloth and vinyl Captain's Chairs  | 0            | 0          | 0            | 0    | 0          | 0   |
| Passenger seat delete  | 0            |            | 0            | 0    | 0          | 0   |
| <b>Other options</b>   |              |            |              |      |            |   |
| High-capacity air conditioning/auxiliary heater  | 0            | 0          | 0            | 0    | 0          | 0   |
| Argent rear step bumper  | 0            |            | 0            | 0    |            | 0   |
| Engine console cover   | 0            | 0          | 0            | 0    | 0          | 0   |
| Hinged side cargo door (no charge)   | 0            | 0          | 0            | 0    | 0          | 0   |
| Fixed rear cargo door glass  | 0            | 0          | 0            | 0    | 0          | 0   |
| Privacy™ glass (windshield and front door)   | 0            | 0          | 0            | 0    | 0          | 0   |
| Swing-out side and rear cargo door glass   | 0            | 0          | 0            | 0    | 0          | 0   |
| Auxiliary rear heater  | 0            | 0          | 0            | 0    | 0          | 0   |
| Engine block heater  | 0            | 0          | 0            | 0    | 0          | 0   |
| Deluxe insulation package  |              | 0          | 0            | 0    | 0          | 0   |
| Bright low-mount swingaway mirrors (RH flat)   | 0            | 0          | 0            | 0    | 0          | 0   |
| Bright swing-out recreational mirrors  | 0            | 0          | 0            | 0    | 0          | 0   |
| Lower bodyside moldings delete   | 0            | 0          | 0            | 0    | 0          | 0   |
| Deluxe two-tone paint  | 0            | 0          | 0            | 0    | 0          | 0   |
| Trailer towing package (4)   | 0            | 0          | 0            | 0    | 0          | 0   |
| Heavy-duty front springs/GAWR (E-350 only)   |              |            | 0            | 0    | 0          | 0   |
| Heavy-duty auxiliary battery (E-350 only)  |              |            | 0            | 0    | 0          | 0   |
| Sport wheel covers   | 0            | 0          | 0            | 0    | 0          | 0   |
| <b>Radio systems</b>   |              |            |              |      |            |   |
| Electronic AM/FM stereo radio with cassette tape and clock                                 | 0            | 0          | 0            | 0    | 0          | 0   |

(1) Includes interval windshield wipers, underhood light, courtesy light switches for all doors, a headlamps-on audible alert and a color-keyed instrument panel with woodtone appliques. (2) Includes a front stabilizer bar, heavy-duty front and rear gas shock absorbers (standard on E-350). (3) E-150/250: Includes super engine cooling, auxiliary transmission oil cooler (except with automatic overdrive), heavy-duty front and rear shock absorbers and heavy-duty rear springs. E-350: Includes super engine cooling (included with 7.5L gas and 7.3L diesel engines), auxiliary transmission oil cooler (except with electronic 4-speed automatic overdrive, included with 5.8L/7.5L with electronic 4-speed trans. over 8,500-lb. GVWR with 4.10 axle), dual electric horns, front stabilizer bar, 100-amp. alternator (standard with 7.3 liter engine) and a left-hand tray for an additional battery. (4) 138" wheelbase only. Includes super engine cooling (included with 7.5L gas and 7.3L diesel engines), auxiliary transmission oil cooler (except with electronic 4-speed automatic overdrive, included with 5.8L/7.5L with electronic 4-speed trans. over 8,500-lb. GVWR with 4.10 axle), trailer wiring harness, heavy-duty turn signal flasher, handling package, dual electric horns.

### MAJOR ECONOLINE E-150 STANDARD FEATURES

#### EXTERIOR

- ☐ Argent front and rear bumpers
- ☐ Tinted glass
- ☐ Light argent grille and surround
- ☐ Rectangular halogen headlamps
- ☐ Bright low-mount swingaway mirrors
- ☐ Bright windshield moldings
- ☐ Lower bodyside moldings
- ☐ Argent steel wheels with bright hub caps

#### INTERIOR

- ☐ Front and rear dome lights
- ☐ Inside lock and latch rear door
- ☐ Sliding side cargo door
- ☐ Color-keyed engine cover with ashtray, change tray and storage bin
- ☐ Inside hood release
- ☐ Ammeter, temperature and oil pressure gauges
- ☐ Front door courtesy light switches
- ☐ Day/night rearview mirror
- ☐ Electronic AM radio with digital clock (may be deleted for credit)
- ☐ Color-keyed safety belts
- ☐ Vinyl bucket seats
- ☐ Pivoting vent windows

#### TECHNICAL

- ☐ Power brakes with rear anti-lock system
- ☐ Power steering
- ☐ 4.9 liter I-6 engine with electronic fuel injection
- ☐ 3-speed automatic transmission
- ☐ Body-on-frame construction

#### XL (in addition to or in place of standard)

- ☐ Chrome front and rear bumpers
- ☐ Chrome grille and surround
- ☐ Bright taillights
- ☐ Color-keyed front carpeting
- ☐ Color-keyed front door trim with woodtone insert and map pockets
- ☐ Woodtone appliques on instrument panel
- ☐ Courtesy light switches (all doors)
- ☐ Premium vinyl seat trim
- ☐ Woodtone appliqué in steering wheel
- ☐ Interval windshield wipers

### AEROSTAR OPTIONS AND PREFERRED EQUIPMENT PACKAGES

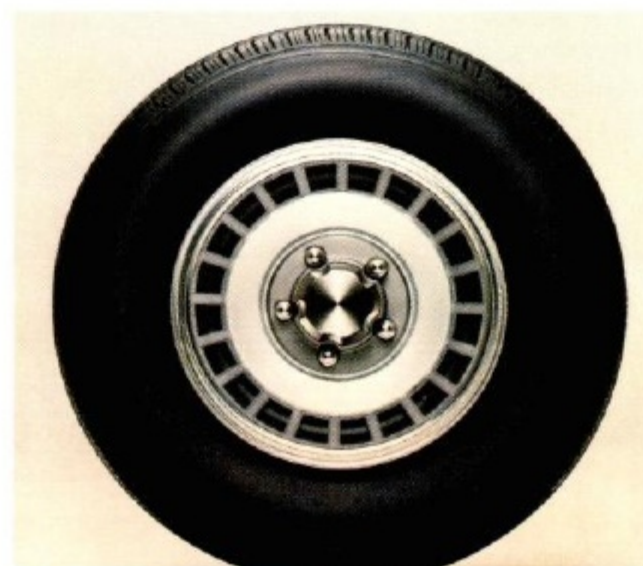
■ = Included in Package 0 = Optional

|   | Cargo Van |      |      |      | Window Van |      |
|---|-----------|------|------|------|------------|------|
|   | 420A      | 421A | 422A | 423A | 430A       | 431A |
| <b>Interior</b>   |           |      |      |      |            |      |
| Tinted windshield and front door glass                                    | 0         | ■    | ■    | ■    |            |      |
| Black outside swingaway mirrors   | 0         | ■    | ■    | ■    | 0          | ■    |
| Interval windshield wipers  |           | ■    | ■    | ■    | ■          | ■    |
| Convenience Group (1)   |           |      | ■    | ■    |            | ■    |
| Speed control and tilt steering wheel                                     |           | 0    | ■    | ■    | 0          | 0    |
| Dual front cloth Captain's Chairs   | 0         | 0    | 0    | ■    | 0          | ■    |
| Electronic AM/FM stereo radio with digital clock                          | 0         | 0    | 0    | ■    | 0          | ■    |
| Bright Package (2)  | 0         | 0    | 0    | 0    | 0          | ■    |
| <b>Powertrains</b>  |           |      |      |      |            |      |
| 3.0L V-6/Automatic Overdrive  | 0         | 0    | 0    | 0    | 0          | 0    |
| 4.0L V-6/HD Automatic Overdrive (3)                                       | 0         | 0    | 0    | 0    | 0          | 0    |
| <b>Tires</b>  |           |      |      |      |            |      |
| P215/70Rx14SL WSW all-season  | 0         | 0    | 0    | 0    | 0          | 0    |
| P215/75Rx14SL BSW or WSW all-season (2WD only)                            | 0         | 0    | 0    | 0    | 0          | 0    |
| <b>Other options</b>  |           |      |      |      |            |      |
| Air conditioning (4)  | 0         | 0    | 0    | 0    | 0          | 0    |
| Limited-slip rear axle  |           | 0    | 0    | 0    | 0          | 0    |
| Floor console with storage bins and cup holders                           | 0         | 0    | 0    | 0    | 0          | 0    |
| Electric rear window defroster (5)  | 0         | 0    | 0    | 0    | 0          | 0    |
| Electronic 4-wheel drive (6)  | 0         | 0    | 0    | 0    | 0          | 0    |
| Engine block heater   | 0         | 0    | 0    | 0    | 0          | 0    |
| License plate bracket   | 0         | 0    | 0    | 0    | 0          | 0    |
| 1,950-lb. Payload Package (1,875 lb. with Extended Van); 2WD only         | 0         | 0    | 0    | 0    | 0          | 0    |
| Underbody space-saver spare tire (2WD regular-length)                     | 0         | 0    | 0    | 0    | 0          | 0    |
| Trailer Towing Package (7)  |           | 0    | 0    | 0    | 0          | 0    |
| Rear window wiper and washer (5)  | 0         | 0    | 0    | 0    | 0          | 0    |
| Side door fixed window  | 0         | 0    | 0    | 0    |            |      |
| Forged aluminum wheels  | 0         | 0    | 0    | 0    | 0          | 0    |
| <b>Radio systems</b>  |           |      |      |      |            |      |
| Electronic AM/FM stereo radio with cassette tape player and digital clock | 0         | 0    | 0    | 0    | 0          | 0    |
| Super Sound System (8)  |           |      |      | 0    |            | 0    |

(1) Includes courtesy light switches (all doors), cargo lamp, underhood lamp, glove box lamp, front reading lamp, ashtray lamp, illuminated entry, under instrument panel lamps, instrument panel vanity panel, locking glove box, headlamps-on alert and dash insulation. Requires tinted glass. (5) Includes interval front wipers. (6) Late availability. (7) Class I trailer wiring harness, heavy-duty turn signal flasher, and limited slip rear axle. (8) Electronic AM/FM stereo radio with cassette tape player and digital clock, premium sound amplifier and speakers, and graphic equalizer. Also includes convenience group described in (2).



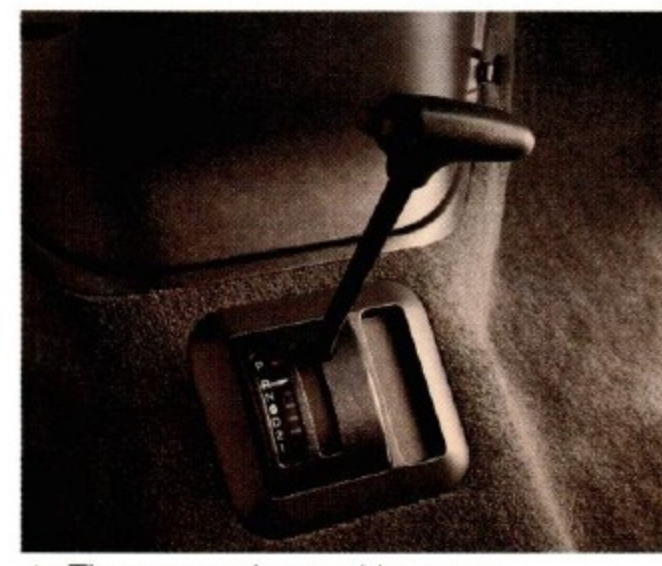
▲ Optional bright swing-out recreational mirrors combine practicality with good looks.



▲ Sport wheel covers are optional on all Econolines.



▲ Both Aerostar and Econoline offer optional AM/FM stereo radios which include a cassette player with Dolby® noise reduction and electronic digital clock.



▲ The automatic overdrive transmission is optional with 2WD Aerostars with the 3.0 liter EFI V-6 engine.

### MAJOR STANDARD FEATURES

#### EXTERIOR

- ☐ Black aero foldaway outside mirrors (RH convex)
- ☐ Front spoiler
- ☐ Bright hubcaps

#### INTERIOR

- ☐ Front 16-oz. carpet/rear polypropylene mat
- ☐ Driver's door courtesy light switch
- ☐ Full wrapover door trim panels
- ☐ Inside fuel filler door release
- ☐ 4-gauge instrument cluster
- ☐ Day/night inside rearview mirror
- ☐ Color-keyed integral lap/shoulder safety belts
- ☐ Dual low-back vinyl bucket seats
- ☐ Electronic AM radio with digital clock (may be deleted for credit)
- ☐ Inside spare tire carrier (underbody with extended van)
- ☐ Dual rear doors with fixed rear glass (one-piece liftgate may be substituted at no extra charge)

#### TECHNICAL

- ☐ Power front disc/rear drum brakes with rear anti-lock system
- ☐ Power steering
- ☐ 3.0 liter V-6 engine with multiple-port EFI and 5-speed manual overdrive transmission (2WD)
- ☐ 4.0 liter V-6 engine with multiple-port EFI and heavy-duty automatic overdrive transmission (4WD) (late availability)
- ☐ P215/70Rx14SL BSW all-season tires



COLORS AND DIMENSIONS

ECONOLINE COLOR SELECTIONS

| Exterior Paint Colors        | Interior Trim Colors |              |             |          |
|------------------------------|----------------------|--------------|-------------|----------|
|                              | Dark Charcoal        | Crystal Blue | Scarlet Red | Chestnut |
| Dark Grey Metallic           | X                    |              | X           |          |
| Medium Silver Metallic       | X                    | X            | X           |          |
| Medium Red                   | X                    |              | X           | X        |
| Medium Crystal Blue Metallic | X                    | X            |             |          |
| Deep Shadow Blue Metallic    |                      | X            |             | X        |
| Spinnaker Blue               | X                    | X            |             |          |
| Colonial White               | X                    | X            | X           | X        |
| Bright White                 | X                    | X            | X           | X        |
| Desert Tan Metallic          |                      |              |             | X        |
| Tan                          |                      |              |             | X        |
| Dark Chestnut Metallic       |                      |              |             | X        |

Some of these paint colors are shown in this catalog. On the printed page, of course, colors are at best only representative of the originals. Your Ford Dealer can show you actual samples of the paint colors presented above as well as interior trim materials. See your dealer for available deluxe two-tone paint combinations.



◀ Deluxe two-tone paint is optional with 138" wheelbase Econolines. See your dealer for combinations.

■ Body color □ Accent color

ECONOLINE DIMENSIONS (STANDARD VANS)

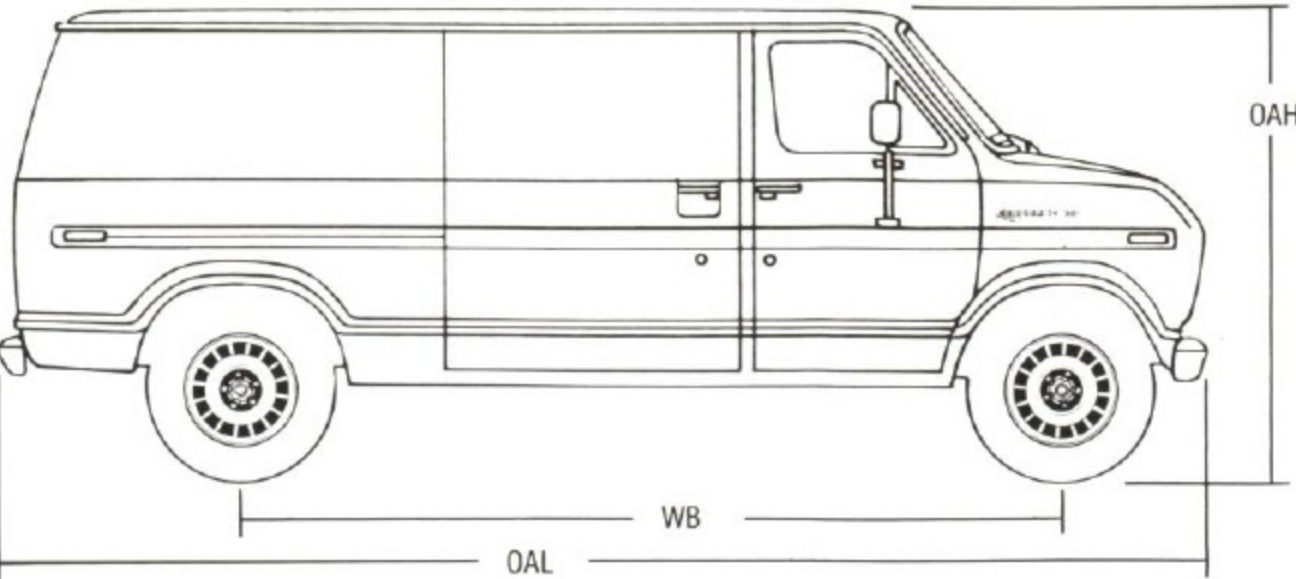
| Series | WB      | OAL    | LH Empty | OAH Empty | AH Loaded | TW    |       |
|--------|---------|--------|----------|-----------|-----------|-------|-------|
|        |         |        |          |           |           | Front | Rear  |
| E-150  | 124"    | 186.8" | 25.4"    | 79.2"     | 6.3"      | 69.4" | 66.9" |
|        | 138"    | 206.8" | 25.9"    | 80.1"     | 6.3"      | 69.4" | 66.9" |
|        | 138" SV | 226.8" | 27.0"    | 80.6"     | 7.1"      | 69.4" | 66.9" |
| E-250  | 138"    | 206.8" | 29.6"    | 83.4"     | 8.3"      | 68.4" | 66.0" |
|        | 138" SV | 226.8" | 30.0"    | 83.6"     | 8.3"      | 68.4" | 66.0" |
|        | 138"    | 206.8" | 32.2"    | 85.4"     | 8.0"      | 68.4" | 66.0" |
| E-350  | 138"    | 206.8" | 32.2"    | 85.4"     | 8.0"      | 68.4" | 66.0" |
|        | 138" SV | 226.8" | 32.3"    | 85.3"     | 8.0"      | 68.4" | 66.0" |

WB = Wheelbase. OAL = Overall Length. LH = Load Height. OAH = Overall Height. AH = Axle Height. TW = Tread Width.

CARGO AREA

|             | WB   | Max. Length (1) | Height | Overall Width | Cargo Volume (2) |
|-------------|------|-----------------|--------|---------------|------------------|
| Regular Van | 124" | 93.0"           | 53.9"  | 79.9"         | 257.0 cu. ft.    |
|             | 138" | 113.0"          | 53.9"  | 79.9"         | 302.2 cu. ft.    |
| Super Van   | 138" | 133.0"          | 53.9"  | 79.9"         | 347.4 cu. ft.    |

(1) With standard right-hand passenger seat. (2) Maximum; with sliding door and without right-hand passenger seat (delete option available).



AEROSTAR COLOR SELECTIONS

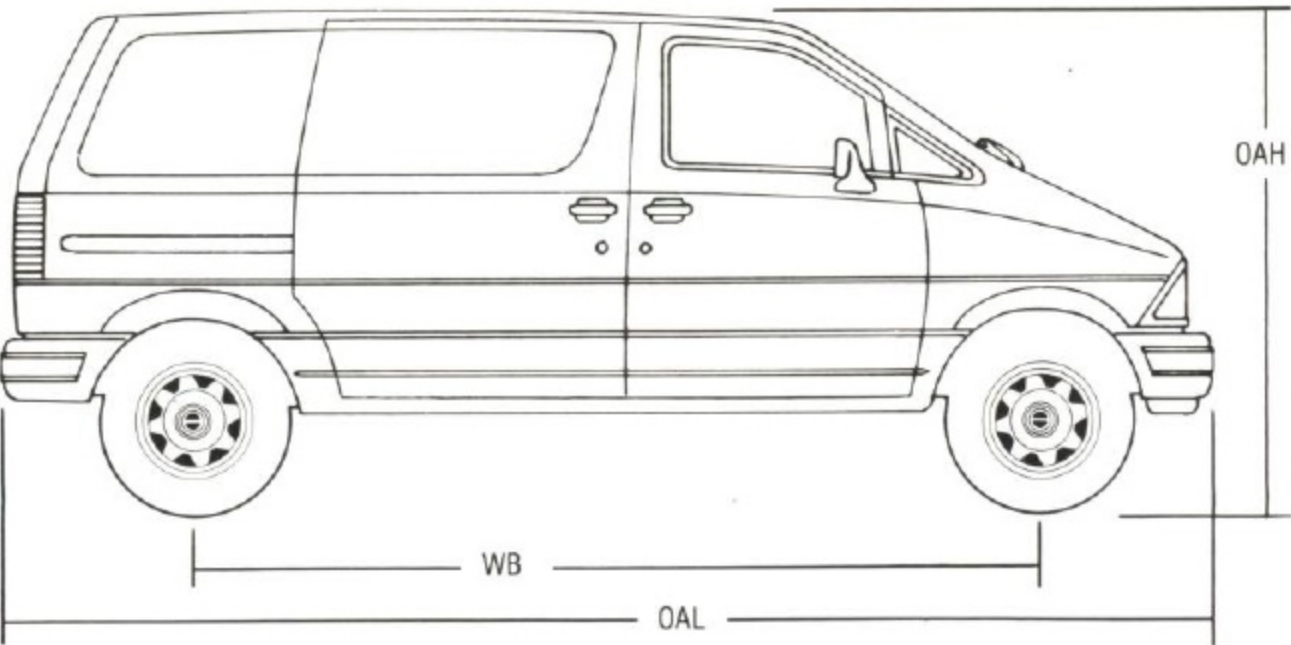
| Exterior Paint Colors               | Interior Trim Colors |              |                  |
|-------------------------------------|----------------------|--------------|------------------|
|                                     | Medium Grey          | Crystal Blue | Light Sandalwood |
| Raven Black                         | X                    |              | X                |
| Medium Red                          | X                    |              |                  |
| Wild Strawberry Clearcoat Metallic  | X                    |              |                  |
| Shadow Grey Clearcoat Metallic      | X                    |              |                  |
| Silver Clearcoat Metallic           | X                    | X            |                  |
| Sandalwood Clearcoat Metallic       |                      |              | X                |
| Light Sandalwood Clearcoat Metallic |                      |              | X                |
| Light Sandalwood                    |                      |              | X                |
| Spinnaker Blue                      |                      | X            |                  |
| Crystal Blue Clearcoat Metallic     |                      | X            |                  |
| Twilight Blue Clearcoat Metallic    | X                    | X            |                  |
| Colonial White                      | X                    | X            | X                |

Some of these paint colors are shown in this catalog. On the printed page, of course, colors are at best only representative of the originals. Your Ford Dealer can show you actual samples of the paint colors presented above as well as interior trim materials.

AEROSTAR MEASUREMENTS

| Exterior                      | Regular Length | Extended Length |
|-------------------------------|----------------|-----------------|
| Overall length (OAL)          | 174.9"         | 190.3"          |
| Overall width                 | 71.7"          | 72.0"           |
| Overall height (OAH)          | 72.9"          | 73.2"           |
|                               | 73.3" (4WD)*   | 73.6" (4WD)*    |
| Wheelbase (WB)                | 118.9"         | 118.9"          |
| Front tread                   | 61.5"          | 61.5"           |
| Rear tread                    | 60.0"          | 60.0"           |
| Front Compartment             |                |                 |
| Head room                     | 39.5"          | 39.5"           |
| Leg room                      | 41.0"          | 41.0"           |
| Rear Compartment              |                |                 |
| Cargo length at floor         | 86.0"          | 101.4"          |
| Cargo width at floor          | 64.5"          | 64.5"           |
| Cargo width at wheelhouse     | 48.2"          | 48.2"           |
| Maximum cargo height          | 47.9"          | 47.9"           |
| Cargo floor to ground         | 25.5"          | 25.0"           |
| Cargo volume (cu. ft.)        | 140.4          | 168.4           |
| Standard payload (lbs.)       | 1,600 (2WD)    | 1,600 (2WD)     |
|                               | 1,700 (4WD)*   | 1,675 (4WD)*    |
| Maximum payload (lbs.)        | 1,950 (2WD)    | 1,875 (2WD)     |
| Maximum trailer towing (lbs.) | 5,000          | 4,900           |
| Fuel capacity (gals.)         | 21.0           | 21.0            |

\*Late availability.



SAFETY AND OWNER BENEFITS

Ford Motor Company strongly encourages all passengers to use their safety belts. Ford urges the use of child and infant restraints. Ford's easy-to-install Tot-Guard (for children 20 to 50 pounds) is available at all Ford Dealers. If a child restraint requires a top-tether, Ford trucks provide special anchorages.



FORD LIFEGUARD DESIGN SAFETY FEATURES

Vehicle operation

□ Split service hydraulic brake system with warning light □ Corrosion-resistant brake lines □ Flash-to-pass headlamps □ Turn indicator lever with lane-changing signal feature □ Hazard warning flasher □ Backup lamps □ Side marker lamps □ Parking lamps coupled with headlamps □ Two-speed windshield wipers □ Windshield washers □ Dual outside rearview mirrors □ Glare-reduced instrument panel, windshield wiper arms and windshield pillars □ Uniform transmission shift quadrant with safety starting switch (on all vehicles equipped with automatic transmission) □ Clutch or neutral interlock for starter motor (on vehicles with manual transmission) □ Continuously variable control illumination intensity (instrument cluster lighting) □ Safety hood latch system □ Responsive windshield defroster system □ Tamper-resistant (non-reversing) odometer □ 55-mph highlighted speedometer □ Impact-activated fuel pump shutoff switch for electronic fuel-injected engines

Occupant protection

□ Safety-designed front end structure □ Two-position door safety latches □ Integral lap and shoulder belts with automatic retractors for front seat occupants, lap belts for all rear seat occupants □ Visual and audible seat belt fastening reminders for the driver's seat □ Energy-absorbing steering column and steering wheel □ Energy-absorbing armrests and

safety-designed door handles □ Energy-absorbing instrument panel with padding □ Energy-absorbing sun visors □ Head restraints □ Safety glove box latch □ Inside yieldaway rearview mirror □ Impact-absorbing laminated safety glass windshield □ Flame-resistant interior materials □ Safety-designed coat hook □ Safety-designed radio control knobs and push buttons

6-YEAR/60,000-MILE POWERTRAIN WARRANTY

Covers you and future owners, with no transfer cost, for 6 years or 60,000 miles, whichever comes first. This limited warranty covers major powertrain components. Ask your dealer for a copy.

6-YEAR/100,000-MILE CORROSION PROTECTION

Corrosion warranty coverage for outer body panel rust-through is 6 years or 100,000 miles, whichever comes first. See your Ford Dealer for a copy of this limited warranty.

SCHEDULED MAINTENANCE

Here are some examples of normal scheduled maintenance intervals for 1990 Ford Vans. For complete maintenance recommendations, refer to the Maintenance Schedule and Record Log of the appropriate vehicle.

|                            |       |                              |
|----------------------------|-------|------------------------------|
| Engine oil change          | ..... | each 7,500 miles or 6 months |
| Spark plug change          | ..... | each 30,000 miles*           |
| Air filter replacement     | ..... | each 30,000 miles            |
| Engine coolant replacement | ...   | each 30,000 miles or 3 years |

\*60,000 for Aerostar.

FUEL ECONOMY

1990 EPA fuel economy estimates were not available at the time this publication was approved for printing. As soon as this information is released, your Ford Dealer will be among the first to receive it and will be happy to pass it along to you.

FORD DEALER QUALITY COMMITMENT

The Ford Quality Commitment extends beyond the factory to every facility where Ford products are sold worldwide. Your dealer knows that making your satisfaction his top priority is part of the total team effort. To him, "Quality is Job 1" means putting the customer first.



Participating Ford Dealers offer the Lifetime Service Guarantee, which guarantees their customer-paid work on your Ford vehicle for as long as you own it. A covered repair is paid for once. If it ever has to be fixed again, the repairing dealer will fix it free. Ask to see a copy of the Lifetime Service Guarantee when you visit your participating Ford Dealer.



Optional Ford Extended Service Plans cover major components on new Ford cars and light trucks for longer than the vehicle's basic warranty. Your Ford Dealer has full details.



Genuine Ford and Motorcraft original equipment replacement parts meet the same high standards as those installed in production.



The leasing alternative is available to qualified applicants through your participating Ford Dealer, who can arrange a Red Carpet Lease® tailored to your circumstances through Ford Credit. A wide variety of financing plans are also available.

OPTIONS AVAILABILITY

Options shown or described in this catalog are available at extra cost and may be offered only in combination with other options or subject to additional ordering requirements or limitations.

PRODUCT CHANGES

Ford Division reserves the right to change product specifications at any time without incurring obligations.

"ASK YOUR FORD DEALER"

Following publication of this catalog, certain changes in standard equipment, options, prices and the like, or product delays, may have occurred which would not be included in these pages. Your Ford Dealer is your best source for up-to-date information.



## **Best-Built American Trucks.**



**This is based on an average of consumer-reported problems in a series of surveys of '81-'89 models designed and built in North America.**