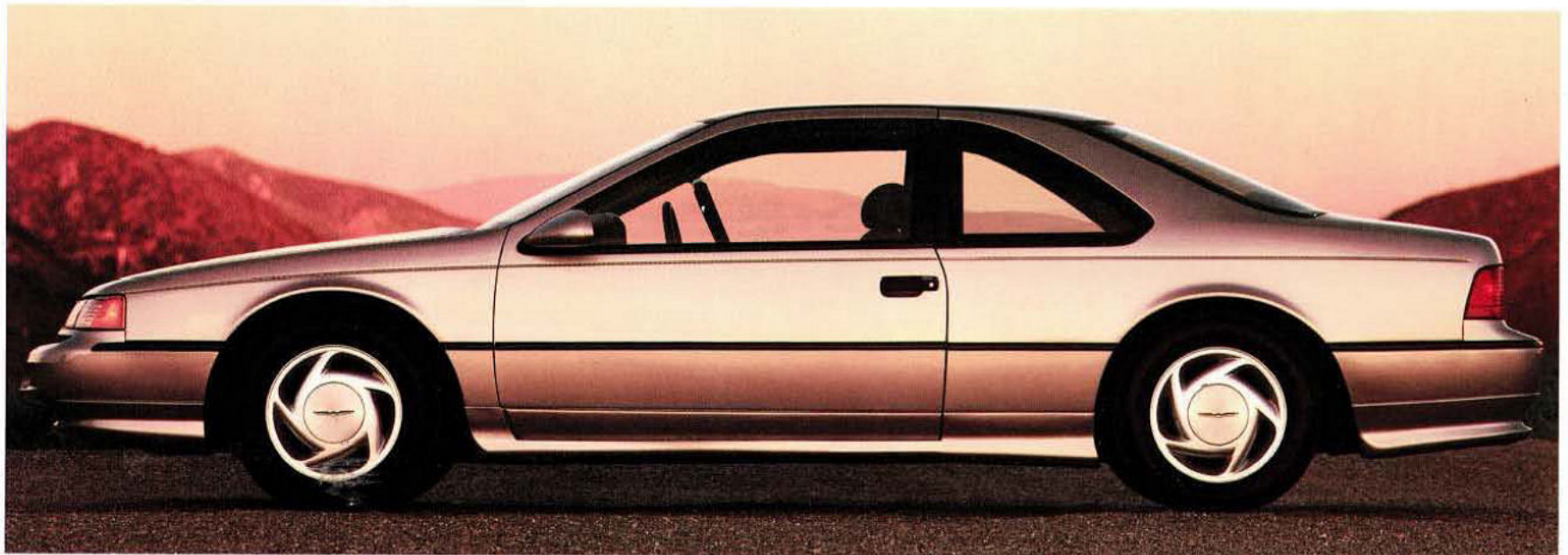


1990 FORD THUNDERBIRD





THUNDERBIRD SUPER COUPE

If there's one notion that's central to all Thunderbirds, it's the idea of a *driver's* car. This special appeal has been a prime ingredient all the way back to the first two-seater. Such is the heritage of a respected industry nameplate, a heritage reaffirmed in the 1990 Thunderbird series lineup and intensified in the stunning Thunderbird Super Coupe.

There's no disputing the obvious signals that say Thunderbird Super Coupe is something special, a car whose business is performance in the *total* sense of the word.

Four-wheel disc brakes are combined with a computer-

The suspension electronically adjusts to changing vehicle and road conditions. The steering system is "speed sensitive."

controlled anti-lock system. Its suspension electronically adjusts to changing vehicle and road conditions. The steering system is "speed sensitive" to deliver the proper feel for the driving situation at hand.

Wide 16" aluminum wheels come with Goodyear Eagle performance tires with an aggressive tread (Eagle GT+4 tires with all-season capability are optional). The Traction-Lok axle automatically shifts some of the driving force, or torque, to the wheel with the most traction under adverse

driving conditions like ice, snow or mud.

These are combined with a supercharged, intercooled 3.8 liter V-6 engine with sequential electronic fuel injection capable of more than 200 horsepower and 300 lbs.-ft. of torque (discussed in detail on page 8).

Together, these components add up to a driving machine for today, one that's engineered for a full range of performance characteristics to satisfy an owner who considers transportation a side benefit to motoring.

Owning this car is made even more attractive by the Super Coupe Special Value Package. When you choose Preferred Equipment Package 157A, a rear window defroster, the power equipment group, electronic AM/FM stereo cassette, the luxury group, and 6-way power front passenger seat are included at no extra cost. See page 21 for details on equipment and Preferred Equipment Packages.

Thunderbird Super Coupe with the optional Super Coupe Special Value Package shown in Light Titanium Clearcoat Metallic.

SUPER COUPE INSTRUMENTATION

Buckled into the body-contoured sport seat, the driver becomes aware of the purposefulness of the layout.

The Super Coupe instrument panel and surrounding controls were designed with the emphasis on the driving function. Gauges are placed to be quickly and easily read, and knobs and push buttons are placed to be comfortably reached. It's all part of the ergonomic integrity of Thunderbird.

But functional doesn't necessarily mean spartan. It simply means that there's no place for gratuitous ornamentation here. Decorative appliques, moldings and other items not directly involved with the business of driving are conspicuous by their absence. Instrumentation was designed for a bold, aggressive appearance in keeping with the look, capability and feel of the car itself.

Super Coupe's performance analog speedometer features white-on-black graphics and trip odometer. There's a tachometer, of

The Super Coupe instrument panel and surrounding controls were designed with the emphasis on the driving function.



In Thunderbird Super Coupe, decorative appliques, moldings and other items not directly involved with the business of driving are preempted by instrumentation with a bold, aggressive, purposeful appearance.

course, and between the two are the supercharger boost gauge and fuel gauge. Temperature and oil pressure gauges are positioned at either end of the cluster. The air conditioning controls are arranged for convenient operation and feature clear graphics for easy reading.

The 5-speed manual transmission leather-covered shift knob is designed to be comfortable to grip and shift, and the switch for the automatic ride control suspension lets the driver override the computer and initiate the "firm" mode

when maximum handling is desired.

Included in the optional Super Coupe Special Value Package 157A is the electronic AM/FM stereo search radio with cassette tape player which is located near the top of the instrument panel for ease in changing radio stations or cassette tapes. With 20 watts of power, it features full electronic tuning, including a "seek" feature that finds and automatically holds the next listenable station either up or down the frequency band.

There are 6 AM and 12 FM preset station memory settings for personal programming along with an auto-reverse cassette player with Dolby® B noise reduction and locking fast forward and rewind.



SUPER COUPE PERFORMANCE

performance driver knows that in addition to what is seen, important information about the road and the car is being fed back through the seat, the steering wheel and the pedals. In Super Coupe, some of this "input" is sensed by technologically advanced suspension, steering and braking systems that help the driver interact with the car and road.

The computer-controlled "speed-sensitive" power steering system adjusts the amount of power assist to the situation by responding to sensors which provide data on speed. This results in smooth, low-effort steering in tight, low-speed maneuvers and a progressively firmer feel as speed increases.

Super Coupe's suspension system incorporates a micro-processor that monitors signals from speed, brake pressure, steering and acceleration sensors and adjusts shock absorber damping automatically to optimize the ride/handling according to the input. Shock damping is "normal" for a smooth ride or "firm" when extra handling is required ("firm" mode may also be selected manually by means of a switch located on the center console).

Hard braking can cause wheel lock-up which reduces driver con-

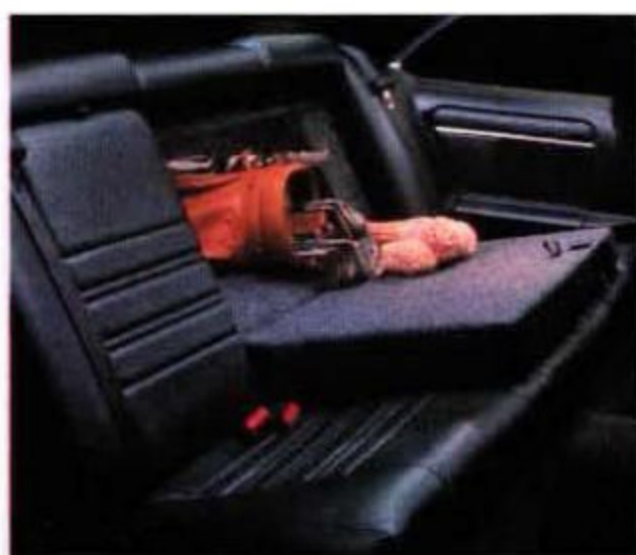
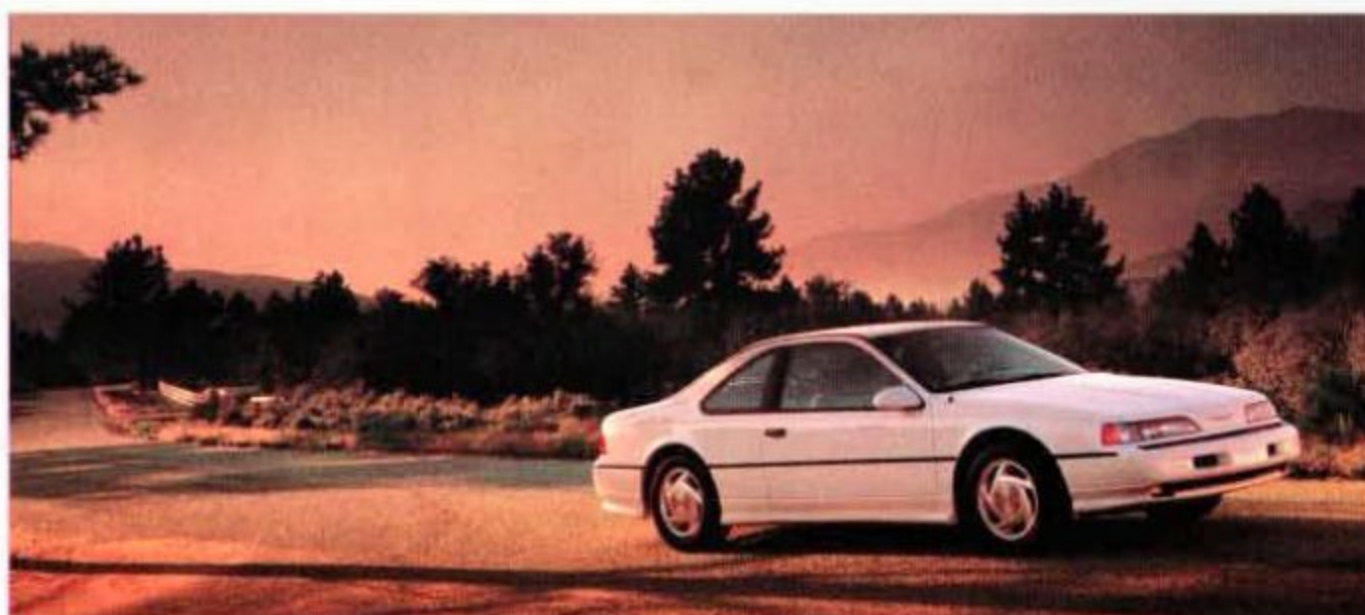
trol, especially on slippery surfaces. The computer technology built into Super Coupe's anti-lock brake system virtually eliminates braking-induced wheel lock-up.

Special sensors monitor the speed of each wheel during braking. If impending wheel lock-up is detected, the brake pressure from the hydraulic unit to the wheels is automatically modulated up to ten times per second. The brakes are applied and released repeatedly in the same way you were probably taught to "pump your brakes" when you felt a loss of traction. But

the anti-lock brake system operates at a rate of speed far exceeding human capability, providing the driver a much greater degree of steering control during hard braking.

The system includes power-assisted 4-wheel disc brakes, 10.8" in diameter up front, 10.0" in diameter in the rear, these brakes have a total swept area of 357.4 square inches for quick stopping action and reduced fade under severe braking.

These sophisticated features, along with the supercharged, inter-cooled engine, 5-speed manual transmission and Goodyear Eagle tires, contribute to Super Coupe's extraordinary driving capability and exhilarating performance.



The split fold down rear seat is included with optional leather seating surfaces in Super Coupe. It allows access to the trunk from inside the car and permits carrying longer cargo, such as golf clubs.



Super Coupe's front articulated sport seats provide firm support and are body-contoured to help hold you in place when cornering. Each seat has a back bolster and lumbar support which include infinite power adjustments. The headrests adjust 4 ways.

Thunderbird Super Coupe interior shown with optional Automatic Overdrive transmission and leather seating surfaces in Black.



SUPERCHARGING

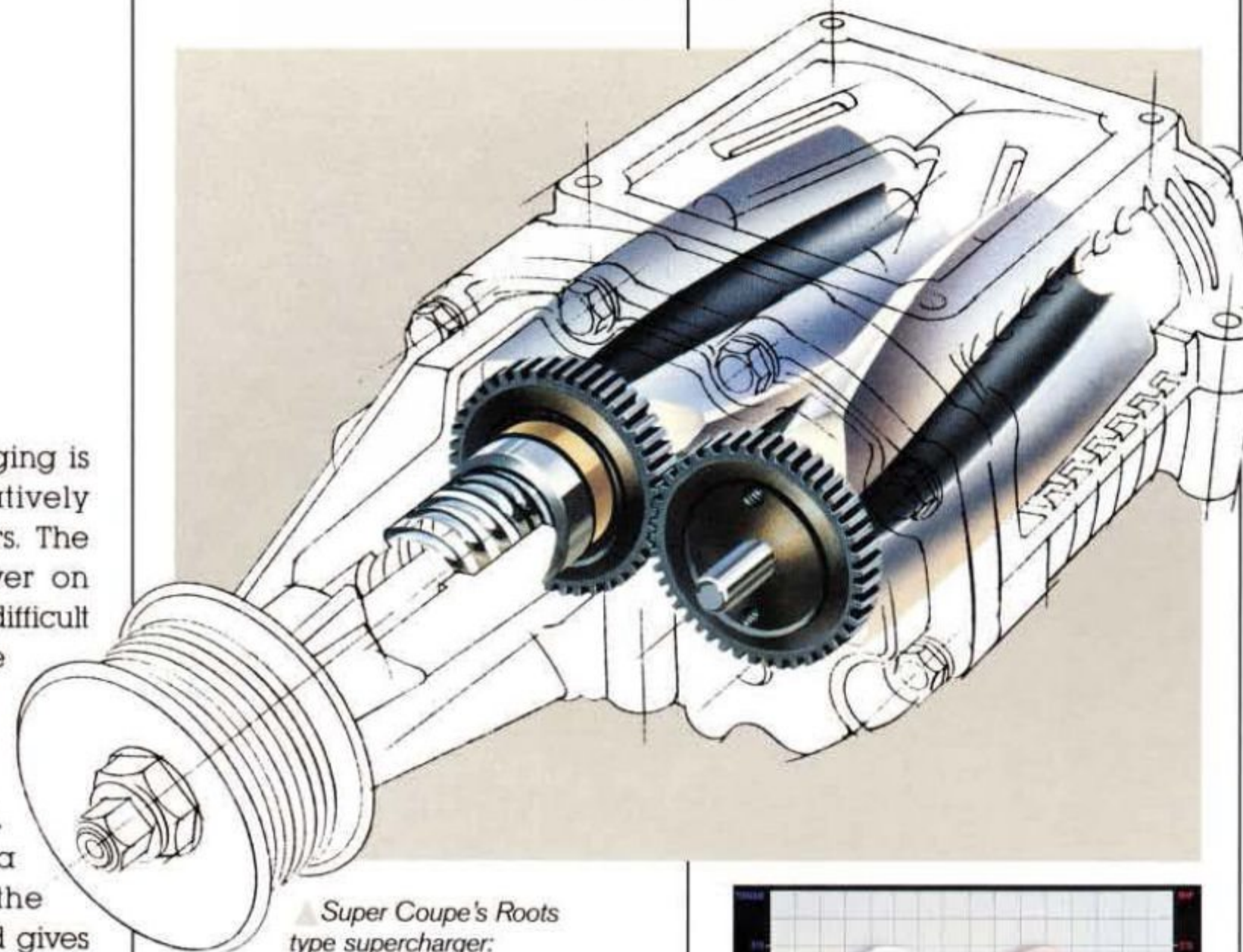
Traditionally, superchargers have been found only on the world's most specialized performance cars. Simply put, supercharging is a means to increase the output of an engine (its horsepower) by raising the pressure of the intake charge above atmospheric.

Superchargers deliver nearly instantaneous response, the kind associated with larger displacement engines.

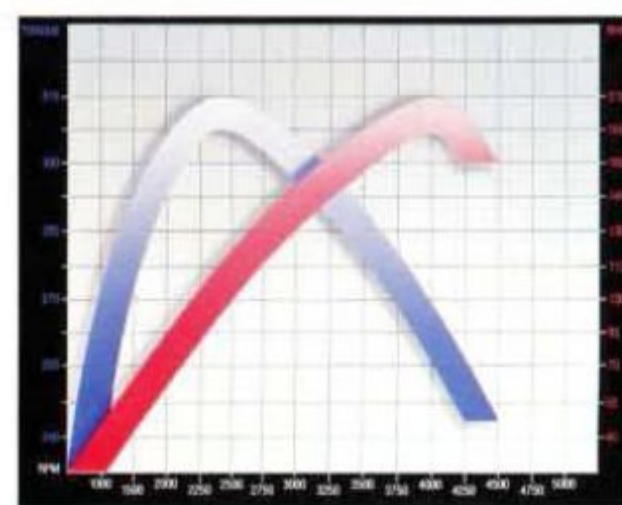
The effect of supercharging is easy to describe. Figuratively speaking, it adds cylinders. The exhilarating rush of power on acceleration makes it very difficult to believe there aren't more of them. In the case of Super Coupe, the performance is what you would expect to experience with a big V-8. And yet, when cruising at a constant rate of speed, the supercharger bypasses and gives you the benefit of 6-cylinder fuel economy.* Here's how supercharging works:

The greater the mass of the fuel/air mixture supplied to the cylinders, the more powerful the combustion stroke. A supercharger is a positive displacement pump that delivers this increased mass. Unlike a turbocharger, it works across a very broad range of engine rpm. The result is quick response even at start-up speeds without the "lag" associated with turbocharging.

Some systems, like the one in Thunderbird Super Coupe, carry this principle even further with a device called an intercooler. Located between the supercharger and the combustion chamber, the intercooler lowers the temperature of the air passing through it, increasing its density—and thus increasing engine horsepower even more.



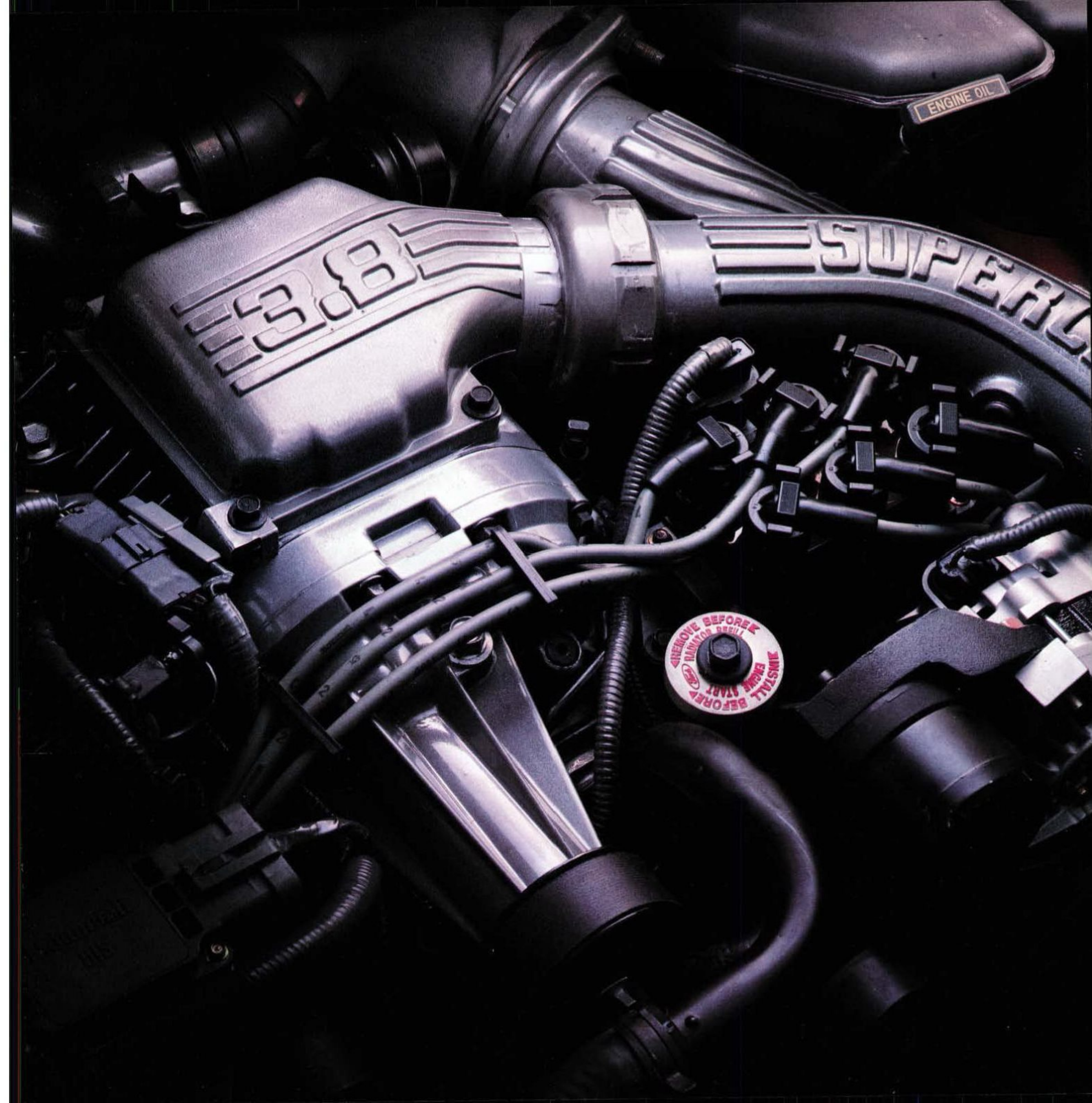
Super Coupe's Roots type supercharger: the finely fitted rotors spin very close to each other and to the inside of the housing, pulling air inside and forcing it into the induction system. Super Coupe generates 210 hp @ 4,000 rpm (red) and 315 lbs.-ft. of torque @ 2,600 rpm (blue). Better boost is created at the low end than with centrifugal systems.



Superchargers (unlike exhaust-driven turbochargers) are mechanically driven by the engine's crankshaft to deliver nearly instantaneous response, the kind associated with larger displacement engines. The supercharger used in Thunderbird is the positive displacement Roots-type. It delivers boost at lower compressor rpm and over a much broader engine-rpm range than some other types (those which rely on centrifugal force for compression, for example). And the special contoured rotor shafts mean smooth operation. It's a system well-suited to the kind of driving most people do—a combination of urban, suburban and highway travel.

In order to maximize the effectiveness of its supercharger, the 3.8L V-6 engine contains special modifications. Hypereutectic aluminum alloy pistons feature a high silicon content for added strength. A special high-strength forged crankshaft is added. The intake manifold is configured for the pressurized fuel/air mixture it receives. And high-performance, platinum-tipped spark plugs are designed for a 60,000-mile service interval, minimizing maintenance service.

*See Gas Mileage, page 23.





THUNDERBIRD LX

Any description of Thunderbird LX would have to include a reference to luxury. LX is outfitted for passenger comfort and convenience.

The interior is the focus for LX premium appointments. The seats are trimmed in special cloth and the door trim panels, which include convenient courtesy lights, are richly upholstered. The power driver's seat adjusts six ways: forward/back, up/down and tilt forward/back. An instrument panel storage bin (located above the glove compartment) features a slid-

ing lid to help keep valuables out of sight. Both sun visors have a lighted mirror.

Electronic instrumentation includes a speedometer and tachometer. The trip computer reports useful travel information. In addition, a vehicle maintenance monitor keeps track of fluid levels for oil, fuel, coolant and windshield washer and even indicates when the engine oil needs to be changed.

LX convenience equipment includes front seat reading lights, an engine compartment light, and front and rear courtesy lights. The illuminated entry system provides extra security after dark. It lights the

Any description of Thunderbird LX would have to include a reference to luxury. LX is outfitted for passenger comfort and convenience.

interior and the door lock cylinders for about 20 seconds or until the steering column is unlocked.

Also standard with LX are speed

control and a tilt steering wheel, two very popular driver convenience items. Entertainment is supplied by the electronic AM/FM stereo search radio with cassette tape and clock.

For those with an eye for value, the shrewd way to equip Thunderbird LX is to choose Preferred Equipment Package 155A. It's comprised of popular options which, when purchased as a group, result in substantial savings. Front passenger power seat, premium cassette radio with premium sound, and the luxury light/convenience group are some of the items included. Optional Preferred Equipment Packages are detailed on page 21.



▲ Thunderbird LX with optional Preferred Equipment Package 155A shown in Deep Titanium Clearcoat Metallic.

◀ Thunderbird LX with optional Preferred Equipment Package 155A shown in Light Crystal Blue Clearcoat Metallic.



*Thunderbird LX interior with
optional Preferred Equipment
Package 155A shown in
Black trim.*



THUNDERBIRD

Thunderbird's profile is eye catching, to be sure. But it's also functional, using sleek lines to achieve the benefits of aerodynamics so important in today's automobiles – lower wind resistance and improved handling. For this is a thoroughly contemporary Thunderbird, one that brings advanced technology to a long-respected nameplate and writes the latest chapter in Ford design leadership.

Thunderbird's 3.8 liter V-6 engine features the precision and efficiency of a sequential electronic fuel injection system. Efficiency is

also enhanced by the engine's roller tappets, whose low-friction operation contributes to fuel economy.* And lightweight, high-strength aluminum and magnesium components help give the vehicle a better power-to-weight ratio than typical materials.

The Automatic Overdrive transmission, with its fourth-gear highway efficiency,* is standard, along with the precision and ease of power rack and pinion steering. The suspension system, responsible in large part for Thunderbird driving pleasure, is discussed on the following pages.

...a thoroughly contemporary Thunderbird, one that brings advanced technology to a long-respected nameplate and writes the latest chapter in Ford design leadership.

Inside, five adults enjoy a roomy interior. The front bucket seats have individual recliners and an automatic shoulder belt restraint system (discussed on page 18) is standard equipment.

Thunderbird comes equipped with features that add to the enjoyment of driving. Air conditioning is complemented by tinted glass all around. An electronic AM/FM stereo search radio provides entertainment. Interval wipers are a real asset in drizzly weather and power windows provide convenience all year.

And for outstanding Thunderbird value, Preferred Equipment Package 151A contains a group of popular options at an attractive price. Electronic AM/FM stereo radio with cassette, speed control, tilt steering wheel, power driver's seat and power door locks are just some of the items. See page 21 for details on Preferred Equipment Packages.

*See Gas Mileage, page 23.

Thunderbird with optional Preferred Equipment Package 151A shown in Currant Red Clearcoat Metallic.

THUNDERBIRD ENGINEERING

ver the years, Thunderbird has come to be known as a "driver's car," regardless of model or series. That's because it's been engineered to appeal to those who take driving seriously. The 1990 Thunderbird is no exception with its rear-wheel drive configuration and performance-oriented componentry.

SUSPENSION DESIGN

The suspension system combines a long-spindle, short/long arm (SLA) front suspension with a fully independent rear setup (see right) for taut handling. Front and rear stabilizer bars provide added control. The rear suspension control arms are "double isolated." This isolation from both the subframe mounts and the lower bushings helps reduce harshness.

Thunderbird's shock absorbers contain a low-pressure charge of inert nitrogen gas. The gas suppresses foaming of the hydraulic fluid due to rapid bumps or similar

agitation. This, with the help of variable-rate coil springs, means the ride is smooth under normal circumstances, yet firm enough for handling situations.

ANTI-LOCK BRAKING

Recent advances in automotive technology have meant new and

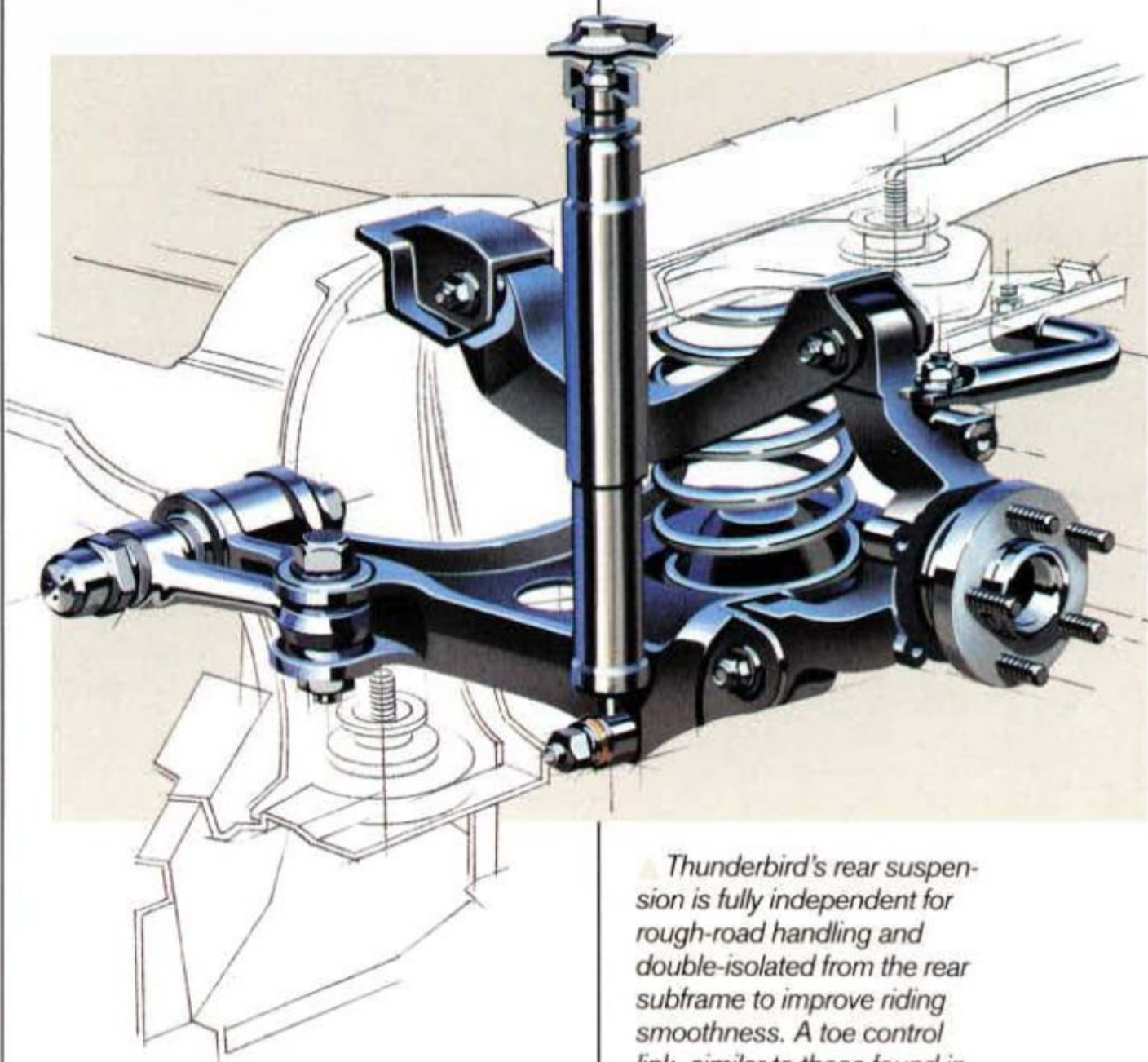
effective ways to deal with out-of-the-ordinary driving situations. One of these beneficial developments is anti-lock brakes, which are standard in Thunderbird Super Coupe and optional with the other Thunderbirds.

Hard braking can cause wheel lock-up which reduces driver con-

trol, especially on slippery surfaces. The computer technology built into the anti-lock brake system virtually eliminates braking-induced wheel lock-up.

Special sensors monitor the speed of each wheel during braking. If impending wheel lock-up is detected, the brake pressure from the hydraulic unit to the wheels is automatically modulated up to ten times per second. The brakes are applied and released repeatedly in the same way you were probably taught to "pump your brakes" when you felt a loss of traction. But the anti-lock brake system operates at a rate of speed far exceeding human capability, providing the driver a much greater degree of steering control during hard braking.

The anti-lock braking system includes power-assisted 4-wheel disc brakes. 10.8" in diameter up front, 10.0" in diameter in the rear, these brakes have a total swept area of 357.4 square inches for quick stopping action and reduced fade under severe braking.



Thunderbird's rear suspension is fully independent for rough-road handling and double-isolated from the rear subframe to improve riding smoothness. A toe control link, similar to those found in some European performance cars, reduces toe-out during braking and cornering maneuvers. Another benefit of the rear suspension design is the allowance it makes for Thunderbird's large trunk area.



THUNDERBIRD DESIGN

The term "ergonomics" has been used more and more over the past few years with regard to automotive design. It refers to the science of planning a vehicle's interior to best suit those who will occupy it. Roominess, placement of controls, visibility — all are functions of ergonomics.

Ergonomically designed to put the emphasis on providing optimum driver and passenger room and comfort.

The 1990 Thunderbird has been ergonomically designed to put the emphasis on optimum driver and passenger room and comfort. Head room, shoulder room, hip room, leg room — all combine to create an interior compartment that's remarkably spacious. Seat contours and firmness are the result of thousands of miles of testing and evaluation. And there are convenient areas for



storage thoughtfully placed in the doors and in the console.

An automatic front shoulder belt restraint system is standard in all Thunderbirds. It automatically secures the front shoulder belts for

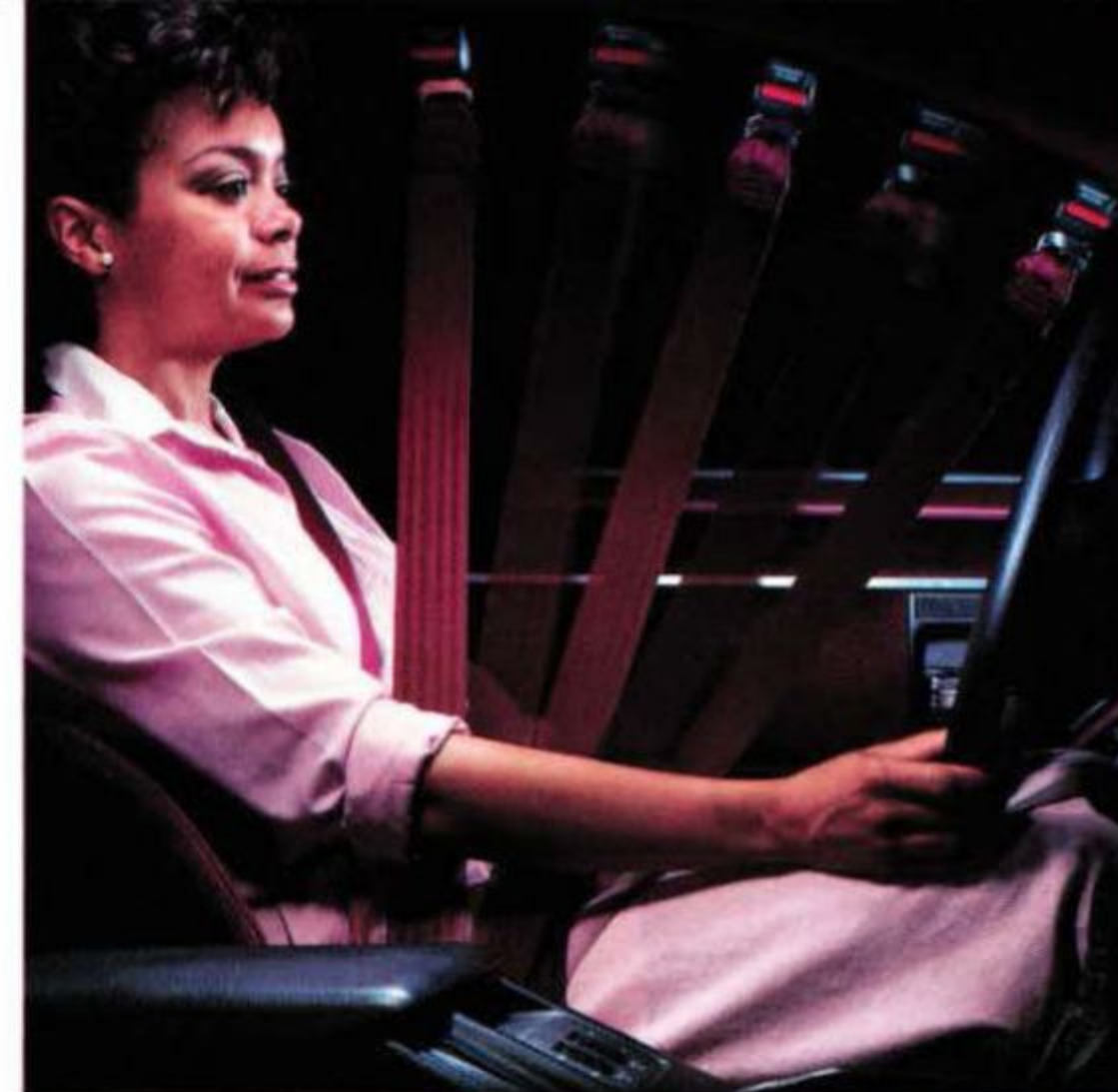
the driver and passenger.

The motorized shoulder belt moves back and forth on a track located above the door. When a front door is opened, the belt is positioned forward at the front pillar

and out of your way for entry. Once you're seated, have closed the door and turned on the ignition, the belt moves back along the track and across your chest and shoulder. All you have to do manually is fasten your lap safety belt. Shoulder belt tension is adjusted automatically and allows freedom of movement.

Once the ignition's turned off, you're properly parked, and it's time to exit, simply open the door and unfasten the lap belt. The shoulder belt moves forward and out of the way automatically. Also, there are emergency release buckles located on the motorized ends of the shoulder belts. Audible and visual signals alert you when one or both of the belts have been disconnected from the emergency buckles.

Thunderbird's automatic shoulder belt restraint system is not intended to function alone. Use the system in conjunction with the manual lap safety belt, which should always be worn. For the rear seats, manual shoulder and lap belts are provided for the outboard seating positions and a lap belt is provided for the center position.



Thunderbird's roomy deep-well trunk provides 14.7 cubic feet of luggage space and a comfortably low lift height to facilitate loading and unloading.

The standard automatic front shoulder belt restraint system is detailed on page 18.



Power windows are standard on all Thunderbirds. Controls are located in the door panel armrests for easy identification and comfortable operation. See page 21 for availability of power door locks and electric mirrors shown also.

The keyless entry system, included with LX Preferred Equipment Package 155A, offers added convenience.



The transmission floor shift is contained in a full-length console. The cover of the handy storage bin also acts as an armrest for the driver or front passenger.

With Thunderbird LX and Super Coupe, a handy instrument panel storage bin includes a sliding cover to keep valuable items out of sight.

THUNDERBIRD SOUND SYSTEMS

Thunderbird stereo systems deliver outstanding fidelity to enhance your driving experience.

ELECTRONIC RADIOS

The Ford Electronic AM/FM Stereo Search Radio with clock is standard in Thunderbird and Thunderbird Super Coupe. It delivers 20 watts of power and has full electronic tuning, including the "seek" feature with which the tuner automatically selects and holds the next listenable station up or down the frequency band.

Eighteen preset station memory settings (6 AM/12 FM) provide personal programming with instant recall. Other features include separate bass and treble controls, front/rear fade control, left/right balance control, and stereo/mono blend.

The optional Electronic AM/FM Stereo Search Radio with Cassette Tape Player and clock, standard with LX and included with Thunderbird Preferred Equipment Package 151A and Super Coupe 157A, includes all the features above with the addition of an auto-reverse cassette player with Dolby® B noise reduction and locking fast forward and rewind.

PREMIUM SOUND

The optional Electronic Premium Cassette Radio with Premium Sound is included in the LX Preferred Equipment Package 155A.



Electronic AM/FM stereo search radio, standard with Thunderbird and Thunderbird Super Coupe.



Electronic AM/FM stereo search radio with cassette tape player (standard with LX and included in optional Preferred Equipment Packages 151A and 157A).



Electronic cassette radio with premium sound, compact disc player and Ford JBL Audio System.

This sophisticated system features 15 station presets (5 AM/10 FM); electronic volume control; pop-out controls for bass, treble, balance and fade; digital clock; motorized cassette tape eject; FM muting; seek/scan tuning for the radio; automatic music search using seek buttons and scan for the cassette tape; auto-reverse cassette player; AM stereo reception (C-Quam® encoded); Dolby® B noise reduction for tape and DNR™ for radio; automatic metal/CrO₂ tape equalization; 80 watts RMS continuous power; four premium speakers; power amplifier/booster and power antenna.

FORD JBL/COMPACT DISC

The optional Ford JBL Audio System includes the Cassette Radio described above. The JBL setup features state-of-the-art sound reproduction from a nine-speaker configuration that delivers 145 watts of total power in a bi-amplified system.

The optional Compact Disc Player (available with the Ford JBL Audio System) provides outstanding clarity and a wide dynamic range. It includes a locking opening that prevents the accidental loading of a second disc, automatic and manual search modes, compression, and a random play feature.

C-Quam® is a registered trademark of Motorola, Inc.

Dolby® is a registered trademark of Dolby Laboratories Licensing Corp.

DNR™ is a trademark of National Semiconductor Corp.

FEATURES, OPTIONS AND PACKAGES

OPTIONS AND PREFERRED EQUIPMENT PACKAGES (Package content subject to change)			
■ = Included in package (package discount is lost if deleted) S = Standard 0 = Optional			
	Std. 151A	LX 155A	Super Coupe 157A*
Power equipment group	■	S	■
Includes:			
Power lock group (2)	■	S	■
Six-way power driver's seat	■	S	■
Rear window defroster	■	■	■
Six-way power front passenger seat	■	■	■
Front floor mats	0	■	0
Keyless entry system	0	■	0
Luxury group	■	■	■
Includes:			
Bright window moldings	■	S	
Speed control and tilt steering wheel	■	S	■
Dual electric remote-control mirrors	■	S	S
Styled road wheel covers	■		
Luxury light/convenience group (3)	■	■	0
Aluminum wheels and P215/70R15 tires	0	■	
Radio systems			
Electronic AM/FM stereo search radio with cassette tape (see page 20)	■		■
Electronic premium cassette radio with premium sound (see page 20)	0	■	0
Ford JBL Audio System (see page 20) (4)	0	0	0
Compact disc player (see page 20)	0	0	0
Power radio antenna	0	■	0
Other options			
Anti-lock braking system with 4-wheel disc brakes (see pages 16-17)	0	0	S
Anti-theft system	0	0	0
Automatic Overdrive transmission	S	S	0
Traction-Lok axle	0	0	S
Leather seating surfaces (includes split fold down rear seat with Super Coupe)		0	0
Power moonroof	0	0	0
Clearcoat paint	0	0	0
Conventional spare tire	0	0	
White sidewall tires	0	0	
All-season Eagle GT+4 performance tires			0
Wire-style locking wheel covers	0	0	

*Super Coupe Special Value Package. When you order your Thunderbird Super Coupe with Preferred Equipment Package 157A, the rear window defroster, power equipment group, luxury group, AM/FM stereo cassette and 6-way power passenger seat are no extra charge. Special value for a special Thunderbird!

(1)Includes speedometer/odometer, tachometer and gauges for voltage, oil pressure, temperature and fuel. A speed alarm can be set to alert you if you exceed your desired speed by 5 mph. Also includes a trip computer with displays for average fuel economy, instantaneous fuel economy, trip distance, fuel remaining and distance to empty. (2)Includes power door locks, remote-control electric decklid with release in glove box, remote-control fuel filler door with release in glove box (standard with LX). (3)Includes cornering lamps, dual illuminated visor mirrors (standard with LX); the illuminated entry system (standard with LX); the autolamp system with auto dim and automatic headlamps on/off/delay; front reading light, passenger-side instrument panel courtesy light and engine compartment light (all standard with LX and Super Coupe); the automatic day/night mirror; the vehicle maintenance monitor (see pages 10-11 for content, standard with LX and Super Coupe). (4)Includes power radio antenna.

MAJOR STANDARD FEATURES

- ☐ Wide bodyside protection moldings
- ☐ Deluxe wheel covers
- ☐ Front automatic shoulder belt restraint system
- ☐ Full-length console with floor-mounted shift
- ☐ Vinyl door trim with storage bins
- ☐ Cloth bucket seats with recliners
- ☐ Air conditioning
- ☐ Tinted glass
- ☐ Analog instrumentation
- ☐ Electronic AM/FM stereo search radio with digital clock (may be deleted for credit; see page 20)
- ☐ Power steering
- ☐ All-season radial tires
- ☐ Power windows
- ☐ Interval windshield wipers

LX (over standard)

- ☐ Styled road wheel covers
- ☐ Luxury-level door trim and carpeting
- ☐ Illuminated entry system and convenience lights
- ☐ Instrument panel upper storage compartment
- ☐ Illuminated visor mirrors
- ☐ Luxury cloth bucket seats with recliners
- ☐ Rear seat center armrest
- ☐ Leather-wrapped luxury steering wheel
- ☐ Vehicle maintenance monitor (see pages 10-11)
- ☐ Remote-release fuel door
- ☐ Electronic instrument cluster (1)
- ☐ Electronic AM/FM stereo search radio with cassette and digital clock (see page 20)
- ☐ Speed-sensitive power steering

Super Coupe (over standard)

- ☐ Fog lamps
- ☐ Narrow bodyside moldings and lower bodyside cladding
- ☐ 16-inch cast aluminum wheels and P225/60R16 97V performance tires
- ☐ Luxury door trim and carpeting
- ☐ Instrument panel upper storage compartment
- ☐ Articulated sport seats with power lumbar and power seat back bolster adjustments
- ☐ Sport soft-feel steering wheel
- ☐ Heavy-duty alternator
- ☐ Automatic ride control adjustable suspension
- ☐ Heavy-duty battery
- ☐ Vehicle maintenance monitor (see pages 10-11)
- ☐ Performance instrumentation
- ☐ Speed-sensitive power steering
- ☐ 5-speed manual overdrive transmission

COLORS, TRIMS, SPECIFICATIONS & OPTIONS

COLORS & TRIMS

THUNDERBIRD AND THUNDERBIRD LX

Exterior Paint Colors	Interior Trim Colors			
	Crystal Blue	Black	Currant Red	Light Sandalwood
Black		X	X	X
Light Titanium Clearcoat Metallic	X	X	X	
Deep Titanium Clearcoat Metallic		X	X	
Currant Red Clearcoat Metallic		X	X	
Bright Red Clearcoat		X		
Alabaster				X
Sandalwood Frost Clearcoat Metallic		X		X
Medium Sandalwood Clearcoat Metallic				X
Light Crystal Blue Clearcoat Metallic	X			
Twilight Blue Clearcoat Metallic	X			
Oxford White	X	X	X	X

THUNDERBIRD SUPER COUPE

Exterior Paint Colors	Interior Trim Colors		
	Crystal Blue	Black	Currant Red
Black		X	X
Bright Red Clearcoat		X	
Light Titanium Clearcoat Metallic	X	X	X
Twilight Blue Clearcoat Metallic	X		
Oxford White	X	X	X

Some of the paint and trim colors are shown in this catalog. On the printed page, of course, colors are at best only representative of the originals. Your Ford Dealer can show you actual samples of the paint colors and trim materials presented above.



For that great open air feeling, the power moonroof is optional with all Thunderbirds. Below: Locking wire-style wheel covers and P205/70R15 tires (left) and cast aluminum wheels are optional with Thunderbird and Thunderbird LX.



THUNDERBIRD AND THUNDERBIRD LX

Engine type	3.8 liter V-6
Horsepower/compression ratio	140 @ 3,800 rpm/9.0:1
Torque	215 @ 2,400 rpm
Induction system	Sequential multiple-port electronic fuel injection
Fuel tank	19 gal.
Transmission	Automatic Overdrive
Front suspension	Long-spindle SLA, variable-rate coil springs, double-acting gas-pressurized shock absorbers, 1.1-inch dia. stabilizer bar
Rear suspension	Independent H-arm, toe control link, variable-rate springs, double-acting gas-pressurized shock absorbers, .98-inch dia. stabilizer bar
Steering	Standard: Power rack-and-pinion, ratio 14.1:1 on center LX: Speed-sensitive variable-assist power, ratio 14.1:1 on center
Brakes	Power front disc/rear drum
Brakes (optional)	Anti-lock braking system, power 4-wheel disc
Wheels	Stamped steel 15" x 6.0"
Wheels (optional)	Cast aluminum 15" x 6.5"
Tires	P205/70R15 BSW
Tires (optional)	P205/70R15 WSW; P215/70R15 BSW

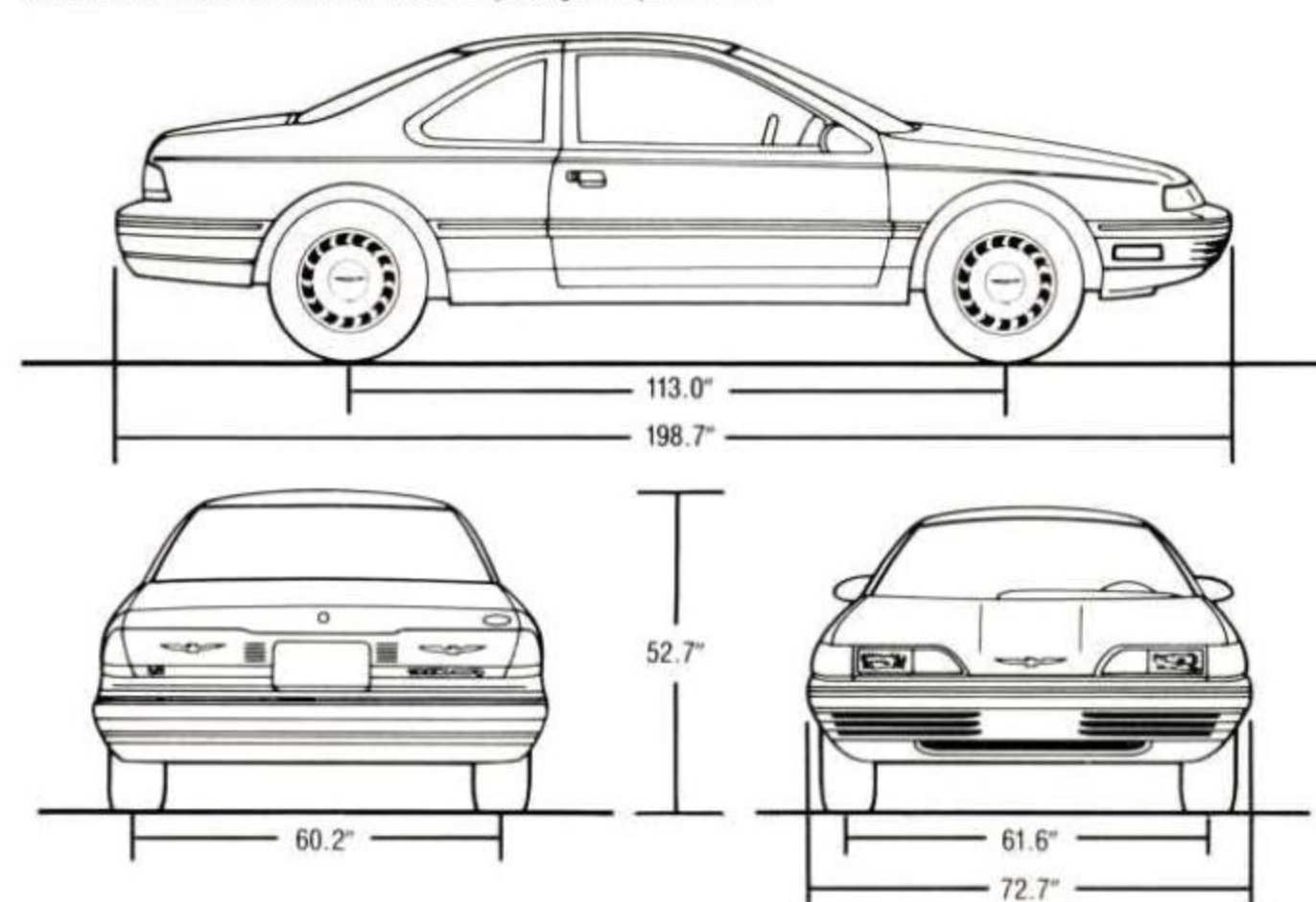
THUNDERBIRD SUPER COUPE

Engine type	3.8 liter supercharged, intercooled V-6 with dual exhaust
Horsepower/compression ratio	210 @ 4,000 rpm/8.2:1
Torque	315 @ 2,600 rpm
Induction system	Sequential multiple-port electronic fuel injection
Fuel tank	19 gal.
Transmission	5-speed manual overdrive; Automatic Overdrive optional
Front suspension (in addition to standard)	Automatic ride control suspension, 1.2-inch dia. stabilizer bar
Rear suspension (in addition to standard)	Automatic ride control suspension, 1.04-inch dia. stabilizer bar
Rear axle	Traction-Lok
Steering	Speed-sensitive, variable-assist power, ratio 14.1:1 on center
Brakes	Anti-lock braking system, power four-wheel disc
Wheels	Cast aluminum 16" x 7.0"
Tires	Goodyear Eagle P225/60R16 97V performance
Tires (optional)	All-season Goodyear Eagle GT + 4 performance

MEASUREMENTS

Wheelbase	113.0"
Length	198.7"
Height	52.7"
Width	72.7"
Front tread	61.6"
Rear tread	60.2"
Luggage capacity (cu. ft.)	14.7
Passenger capacity	5

Based on Motor Vehicle Manufacturers Association passenger car specifications.



SAFETY AND OWNER BENEFITS

Ford Motor Company strongly encourages all passengers to use their safety belts. In Thunderbird, an automatic front shoulder belt restraint system with manual lap safety belts is standard in all models.



Ford also urges the use of child and infant restraints, as required in all states. Ford's easy-to-install Tot-Guard (for children 20 to 50 pounds) is available at all Ford Dealers. If a child restraint requires a top-tether, Ford cars provide for attachment of an anchor at each rear seating position. For Thunderbird, a clip-on child seat buckle is available at no charge for the right-hand front seat manual lap belt.

FORD LIFE GUARD DESIGN SAFETY FEATURES

Vehicle operation

□ Split service hydraulic brake system with warning light □ Corrosion-resistant brake lines □ Flash-to-pass headlamps □ Turn indicator lever with lane-changing signal feature □ Hazard warning flasher □ Backup lamps □ Side marker lamps □ Parking lamps coupled with headlamps □ High-mount stop lamp □ Interval windshield wipers □ Windshield washers □ Outside rearview mirror, driver's side □ Glare-reduced instrument panel, windshield wiper arms and windshield pillars □ Uniform transmission shift quadrant with safety starting switch (on all cars equipped with automatic transmission) □ Clutch or neutral interlock for starter motor (on cars with manual transmission) □ Continuously variable control illumination intensity (instrument cluster lighting) □ Safety hood latch system □ Responsive windshield defroster system □ Tamper-resistant (non-reversing) odometer □ 55-mph highlighted speedometer □ Impact-activated fuel pump shut-off switch for electronic fuel-injected engines

Occupant protection

□ Safety-designed front end structure □ Safety-designed roof structure □ Steel guard rails in side doors □ Safety-designed door hinges and double yoke safety door latches □ Front automatic shoulder belt restraint system with manual lap belts □ Visual and audible seat belt fastening reminders for the driver's seat □ Lap belts for center rear seating position and lap/shoulder belts with automatic retractors for rear outboard seating positions □ Energy-absorbing steering column and steering wheel □ Energy-absorbing armrests and safety-designed door handles □ Energy-absorbing instrument panel with padding □ Energy-absorbing sun visors □ Energy-absorbing front seat back tops □ Self-locking seat back latches □ Head restraints for front occupants □ Safety glove box latch □ Inside yieldaway rearview mirror □ Impact-absorbing laminated safety glass windshield □ Flame-resistant interior materials □ Safety-designed coat hooks □ Safety-designed radio control knobs and push buttons

Anti-theft

□ Locking steering column with audible key reminder □ Visible Vehicle Identification Number (VIN) □ Inside hood release

6-YEAR/60,000-MILE POWERTRAIN WARRANTY

Covers you and future owners, with no transfer cost, for 6 years or 60,000 miles, whichever comes first. This limited warranty covers major powertrain components. Ask your dealer for a copy.

CORROSION PROTECTION

Thunderbird's corrosion warranty coverage for outer body panel rust-through is 6 years or 100,000 miles, whichever comes first. See your Ford Dealer for a copy of this limited warranty.

SCHEDULED MAINTENANCE

Here are some examples of normal scheduled maintenance intervals for the 1990 Thunderbird. For complete maintenance recommendations, refer to the Maintenance Schedule and Record Log.

Engine oil and filter change each 7,500 miles or 6 months*

Spark plug change each 30,000 miles**

Air filter replacement each 30,000 miles

Engine coolant replacement each 30,000 miles or 3 years

*For Super Coupe, change as indicated by maintenance monitor, but not to go beyond 5,000 miles or 6 months, whichever comes first.
**60,000 for Super Coupe.

DAMAGE RESISTANCE

Ford equips Thunderbird with impact-resistant front and rear bumpers that meet the damageability requirements of the Federal Bumper Standards at 5 mph (exceeding the Standards' 2½-mph requirement).

GAS MILEAGE

1990 EPA mileage estimates were not available at the time this publication was approved for printing. See your dealer for current information.

FORD DEALER QUALITY COMMITMENT

The Ford Quality Commitment extends beyond the factory to every facility where Ford products are sold worldwide. Your dealer knows that making your satisfaction his top priority is part of the total team effort. To him, "Quality is Job 1" means putting the customer first.



Participating Ford Dealers offer the Lifetime Service Guarantee, which guarantees their customer-paid work on your Ford vehicle for as long as you own it. A covered repair is paid for once. If it ever has to be fixed again, the repairing dealer will fix it free. Ask to see a copy of the Lifetime Service Guarantee when you visit your participating Ford Dealer.



Optional Ford Extended Service Plans cover major components on new Ford cars and light trucks for longer than the vehicle's basic warranty. Your Ford Dealer has full details.

Motorcraft QUALITY REPLACEMENT PARTS FROM FORD

Genuine Ford and Motorcraft original equipment replacement parts meet the same high standards as those installed in production.



The leasing alternative is available to qualified lessees through your participating Ford Dealer, who can arrange a Red Carpet Lease® tailored to your circumstances through Ford Credit. A wide variety of financing plans are also available.

OPTIONS AVAILABILITY

Options shown or described in this catalog are available at extra cost and may be offered only in combination with other options or subject to additional ordering requirements or limitations.

"ASK YOUR FORD DEALER"

Following publication of this catalog, certain changes in standard equipment, options, prices and the like, or product delays, may have occurred which would not be included in these pages. Your Ford Dealer is your best source for up-to-date information.

PRODUCT CHANGES

Ford Division reserves the right to change product specifications at any time without incurring obligations.

Best-Built American Cars.



This is based on an average of consumer-reported problems in a series of surveys of '81-'89 models designed and built in North America.