

1991

FORD TAURUS



TAURUS LX

Only by demonstrating a commitment to design and engineering excellence above the ordinary does an automobile make *Car and Driver's* list of "Ten Best Cars." Remarkably, Taurus has captured this coveted distinction not once or twice, but five years in a row (1986 to 1990).

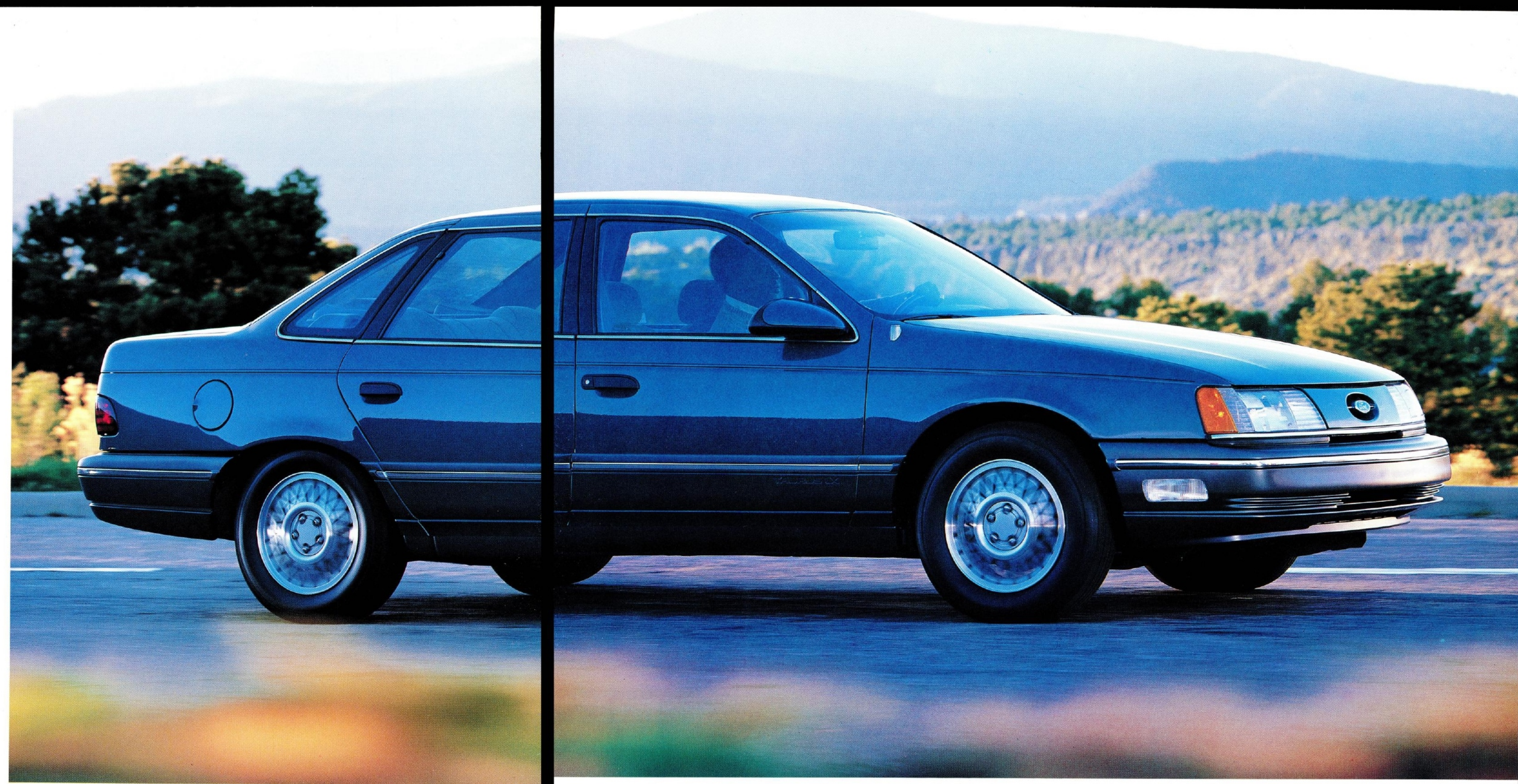
It was with a best-in-class philosophy — striving to be the best in as many features as possible — that we created Taurus. And as a product of our philosophy of continuous improvement, Taurus remains today the American standard of design.

Our feature car presented here is the luxurious Taurus LX Sedan. This year, we have improved its driveability by equipping the standard 3.0L V-6 with a state-of-the-art sequential multi-port electronic fuel injection system.

In its comfort and convenience, LX is no less impressive. Included are air conditioning, 6-way power driver's seat adjustment, diagnostic instrumentation, power windows and door locks, luxury sound insulation, and much more.

Taurus LX features as well a special lower bodyside cladding that is designed to protect against stone chipping. It also helps reduce wind turbulence, which enhances the air-flow efficiency of one of the most aerodynamic mid-size sedans or wagons built in America.

Taurus LX Sedan in Amethyst Frost Clearcoat Metallic. Some equipment shown is optional. The standard V-6 engine is equipped with sequential multi-port fuel injection.



THE TAURUS INTERIOR

The numerous design awards Taurus has garnered over the years are not only for the aerodynamic shape that has made the Ford oval synonymous with design leadership. As much credit goes to Taurus' ergonomic and space-efficient interior.

A car with excellent driver-command ergonomics allows you to more fully appreciate its engineering capabilities. With this in mind, we designed Taurus to help keep you comfortably in command of driving functions, so that you can concentrate your attention on enjoying the driving experience.

Placement of controls is determined by length of reach and frequency of use. Controls are also designed considering the size and shape of your hands, and are easily identifiable by touch.

Optional electronic instrument cluster (GL and LX models).

The amount of effort required to operate the controls is also carefully evaluated as part of the entire ergonomic formula. So are legibility of instrumentation, hand/eye movements, and many other factors.

The seating is designed and constructed to minimize fatigue, especially over long distances, and to provide firm lateral support. Taurus' front seats underwent more than 100,000 miles of actual on-road development to make them exceptionally comfortable.

We've gone to great lengths to make your experience at the wheel of a Taurus most enjoyable. This is such an outstanding driver's car, in fact, that it's easy to forget that Taurus is a spacious, six-passenger family car with a passenger volume index of 100 cu. ft.



Taurus LX interior in Currant Red. Some equipment shown is optional.



Above right: Rocker switch controls for the power door locks (standard in LX and SHO and optional in L and GL) are located on an ergonomic door-mounted panel.

Below right: Among Taurus' many convenience features are coin (shown) and cup holders.



TAURUS WAGON

Taurus Wagon presents a unique aero shape and provides lots of cargo space, a remarkable combination of style and function. We've made Taurus the wagon design leader. And people have responded by making Taurus the wagon sales leader.

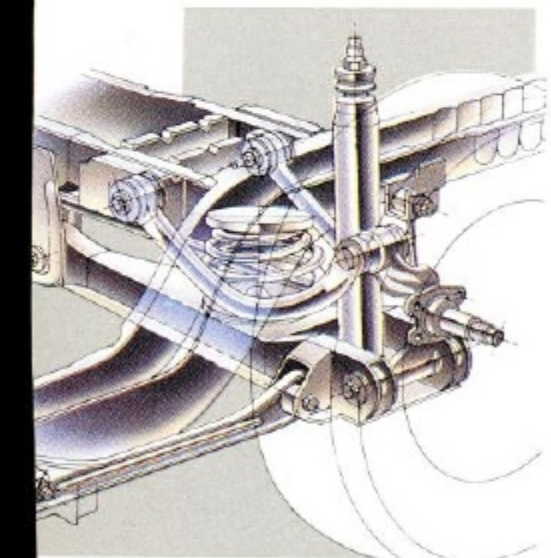
Taurus' maximum 81.1 cu. ft. of cargo space are the result of interior space-efficiency coupled with rear suspension design ingenuity (illustrated below at left).

Conveniences and versatility are equally outstanding. The 3-passenger 60/40 split second seat folds down flat for maximum cargo-carrying utility. Depending on which seat back is lowered, you still have room for one or two passengers.

The carpeted load floor includes built-in cargo tie-downs. A lockable under-floor compartment is included in wagons with mini-spare tire. The roof luggage rack has an adjustable rear crossbar and six tie-downs. And there's the versatility of the two-way liftgate shown below.

Performance is excellent as well. Sequential multi-port fuel-injected V-6 power is standard. So are sedan-like ride quality and handling. There are also high-technology options available: Variable power-assist speed-sensitive steering. Plus 4-wheel power disc brakes with computer-controlled anti-lock system.

While many wagons ride on sedan rear suspensions equipped with heavier-duty components, Taurus has a special "short/long arm" independent rear system designed to provide a lower and wider load floor for more cargo space.



The standard two-way liftgate allows cargo to be loaded with either the window raised or the entire liftgate open.



Above: Taurus LX Wagon in Titanium Frost Clearcoat Metallic. Some equipment shown is optional. A 3.0L SEFI V-6 engine is standard in L and GL Wagons. The LX model is powered by a standard 3.8L SEFI V-6.

Taurus Wagon provides an under-floor storage compartment (with standard mini spare tire).



The optional rear facing third seat is just right for two children.

The versatile 3-passenger 60/40 split second seat folds down flat for maximum cargo-carrying utility.

TAURUS GL AND L

Our goal is to be the best in the business of building production cars that are world-class in design and quality. But design excellence and high quality alone are not enough. We have another important goal — and that is to be the best in the business of building cars that are second to none in value.

Take our Taurus GL and L models, for example. These popular mid-size sedans and wagons offer all the proof you could want that a single automobile can be world class in design and highly affordable at the same time.

Start with engineering. The standard 3.0L V-6 and optional 3.8L V-6 engines are equipped with state-of-the-art sequential multi-port electronic fuel injection (SEFI). And they're teamed with a new electronic 4-speed automatic overdrive transaxle (AXOD-E). Both SEFI and AXOD-E are controlled by the EEC-IV computer.

Taurus L and GL Sedans and Wagons also offer more world-class engineering options: the anti-lock braking system and variable power-assist speed-sensitive steering, both governed by computer.

Now consider the long list of comfort and convenience features. Dual electric remote-control mirrors. Tilt steering column. Split bench front seat with individually reclining seat backs. AM/FM stereo sound system. Variable-speed interval windshield wipers. Tinted glass. Driver-side air bag supplemental restraint system. These are all standard, along with halogen headlamps, all-season steel-belted tires, power steering and brakes.

The Taurus GL comes with even more: 4-way adjustable head restraints, seat back map pockets, dual visor mirrors with driver-side secondary visor, and an elasticized cargo tie-down net. Plus a fold-down armrest, integral head restraints, and a window ledge storage bin in the rear compartment of the sedan model.

Then you have the features in Preferred Equipment Package 204A. Among them are air conditioning, speed control, electronic AM/FM stereo with cassette tape player, power driver's seat, power windows and locks, rear window defroster, and finned wheel covers.

We've put these popular options into a group and reduced their combined price, which is less than what you'd pay if you purchased them separately. The way we've designed it, GL Package 204A offers the best in Taurus value. The new L Plus Package 203A with air conditioning, power door locks, and rear window defroster is yet another outstanding value.

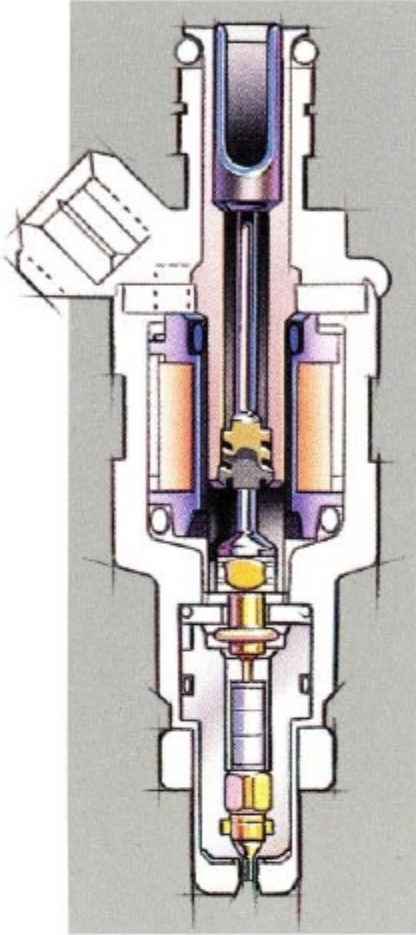


Taurus GL instrument panel (above) and standard 3-passenger split bench front seat with fold-down armrests (right) in Black. For a sportier interior, order bucket seats (far right) with full console and floor-mounted automatic shift, available in Taurus GL. The Crystal Blue color shown will be delayed. See your dealer for availability.



Above: Taurus GL Sedan in Twilight Blue Clearcoat Metallic and Taurus GL Wagon in Oxford White. Left: Taurus L Plus Sedan in Garnet Red Clearcoat Metallic. Some equipment shown on these pages is optional.

FORD TAURUS ENGINEERING



Each cylinder in a "multi-port" fuel-injected engine has its own fuel injector mounted directly above the intake port. Fuel distribution is precisely controlled by the EEC-IV computer.

Balancing power and efficiency is not an automatic achievement. Excellent power-efficiency today requires, among many things, sophisticated systems that enable an engine to extract as much power as possible from every drop of fuel.

One such system is electronic fuel injection. New for 1991, every Taurus engine is equipped with computer-controlled, sequential multi-port electronic fuel injection (SEFI) — a state-of-the-art fuel delivery system that helps provide excellent power-efficiency along with responsiveness and driveability.

With multi-port electronic fuel injection, each cylinder has its own fuel injector positioned just a few millimeters away from the fuel-air intake port. The injector releases an atomized spray of fuel that's evenly dispersed in the air drawn into the combustion chamber. This helps maximize combustion efficiency.

In Taurus' advanced SEFI system, fuel to each cylinder is released "sequentially" with the engine's spark firing order, which makes fuel metering even more precise and efficient.

Fuel delivery, the mixing of fuel and air, and ignition timing are among the many functions controlled by the sophisticated EEC-IV computer with 32K memory. EEC-IV constantly "fine-tunes" the

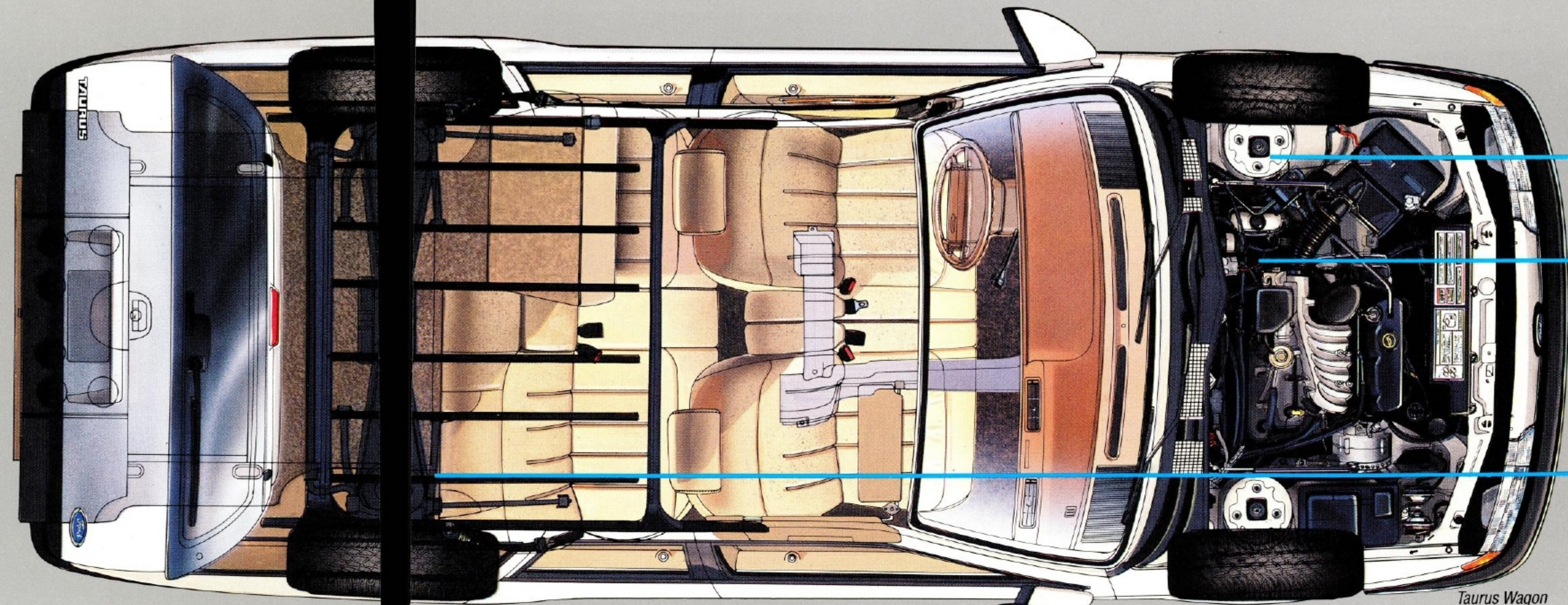
operation of the engine to the requirements of the moment.

What's more, every engine for Taurus L, GL and LX is teamed with a new electronic 4-speed automatic overdrive transaxle (AXOD-E). Controlled by the EEC-IV computer, AXOD-E shifts more smoothly and quickly than the transaxle it replaces.

Balancing ride and handling doesn't happen any more automatically than balancing power and efficiency. That is why Taurus' 4-wheel independent suspension system is engineered to deliver precise handling while providing the kind of smooth ride most drivers are accustomed to.

Taurus Sedan features the efficient MacPherson spring-over-strut design at the front and the rear. The struts are nitrogen gas-pressurized for a smooth and controlled ride, even over rough surfaces.

While sharing the sedan's front suspension design, the Taurus Wagon has a special "short/long arm" (SLA) independent rear suspension designed for a lower and wider load floor for more cargo space. And equipped with components such as variable-rate coil springs, gas-pressurized shocks and stabilizer bar, it provides sedan-like ride smoothness and handling, whether it's supporting a full cargo load or none at all.

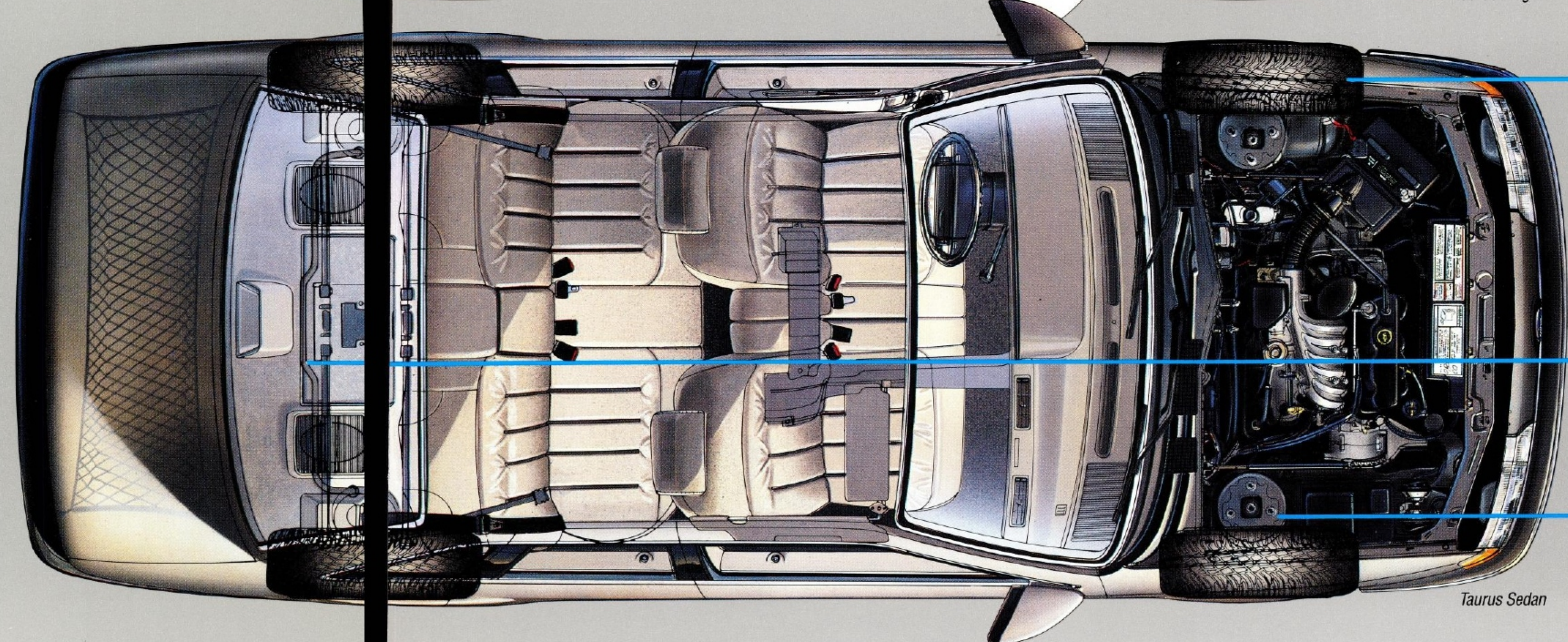


Taurus Wagon

Power rack-and-pinion steering features a 15.2:1 steering gear ratio for quick responsiveness. A variable power-assist speed-sensitive system is optional in Taurus L, GL, and LX models (page 13).

The new electronic 4-speed automatic overdrive transaxle (AXOD-E) provides smoother and quicker shifting.

Independent rear suspension with gas-pressurized shock absorbers and stabilizer bar in Taurus Wagon incorporates a "short/long arm" (SLA) setup designed to maximize usable cargo space and provide sedan-like ride quality and handling.



Taurus Sedan

Power front disc/rear drum brakes are standard in Taurus L, GL and LX Sedans and Wagons. Power 4-wheel disc brakes with anti-lock system are standard in Taurus SHO and optional in Taurus L, GL, and LX (page 12).

Independent rear suspension in Taurus Sedan is the MacPherson strut design with gas-pressurized shocks. V-6-powered sedans have a stabilizer bar.

Front suspension system in sedan and wagon models is the MacPherson strut design with gas-pressurized struts and stabilizer bar. Front end alignment needs no periodic adjustment.

CUSTOMER DRIVEN DESIGN

You can look over Ford Taurus' complete list of features, standard and optional, and find many examples of purposeful automotive design.

There are fine examples evident in Taurus' highly aerodynamic design alone. Take the polycarbonate bumper system. It's designed for 5-mph impact resistance (twice the Federal 2-1/2-mph standard) as well as for aero efficiency.

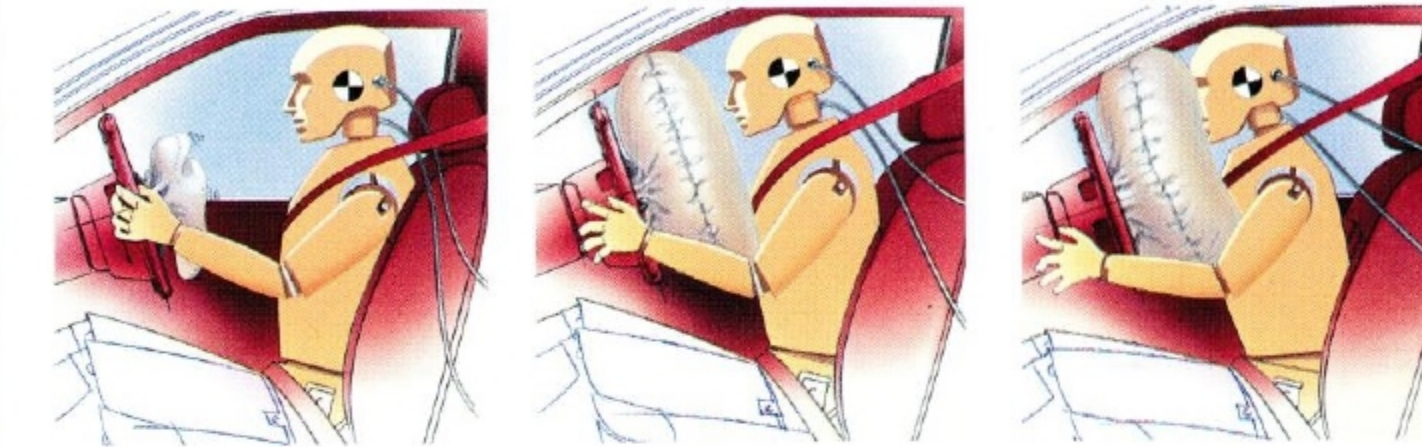
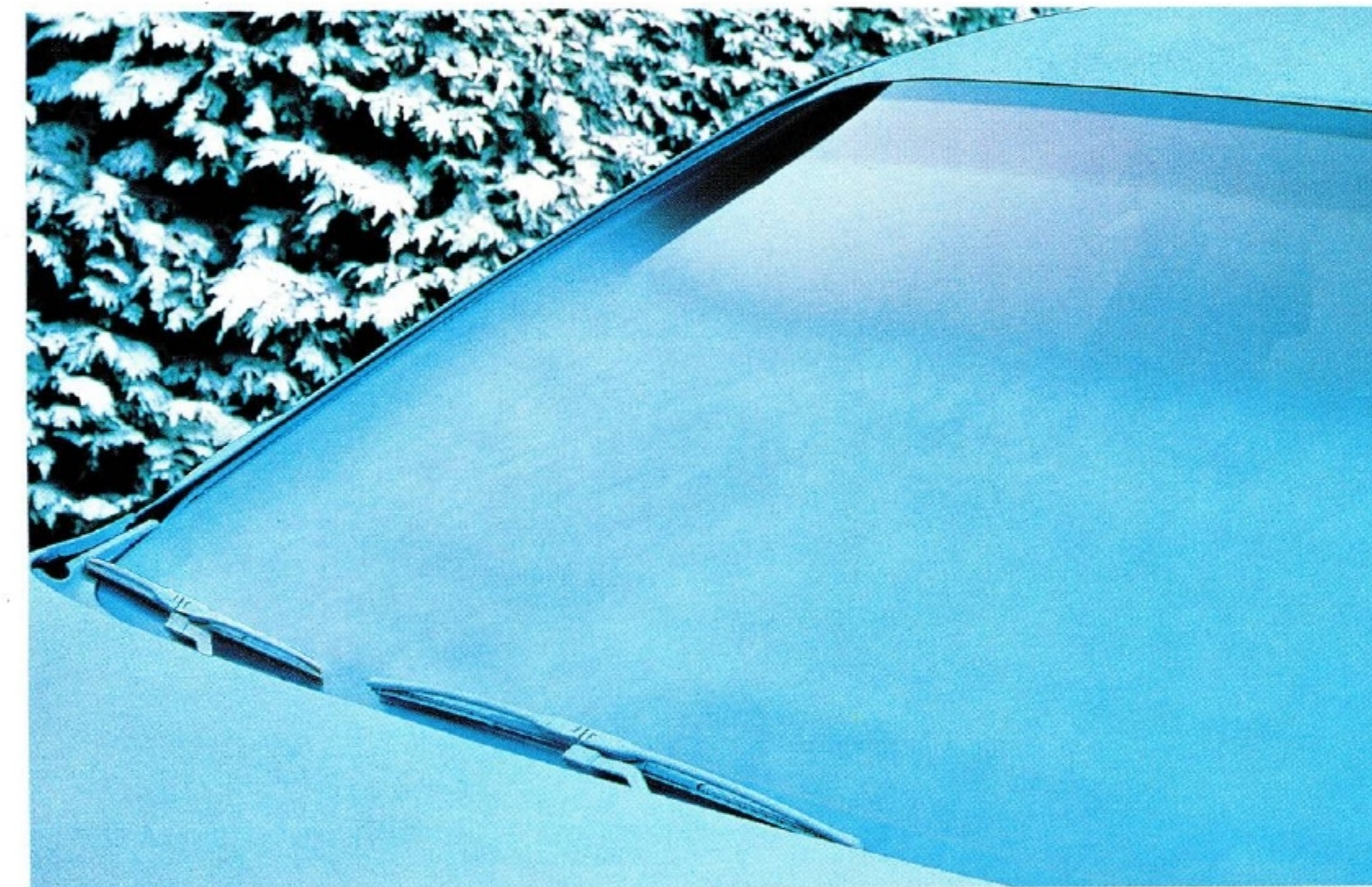
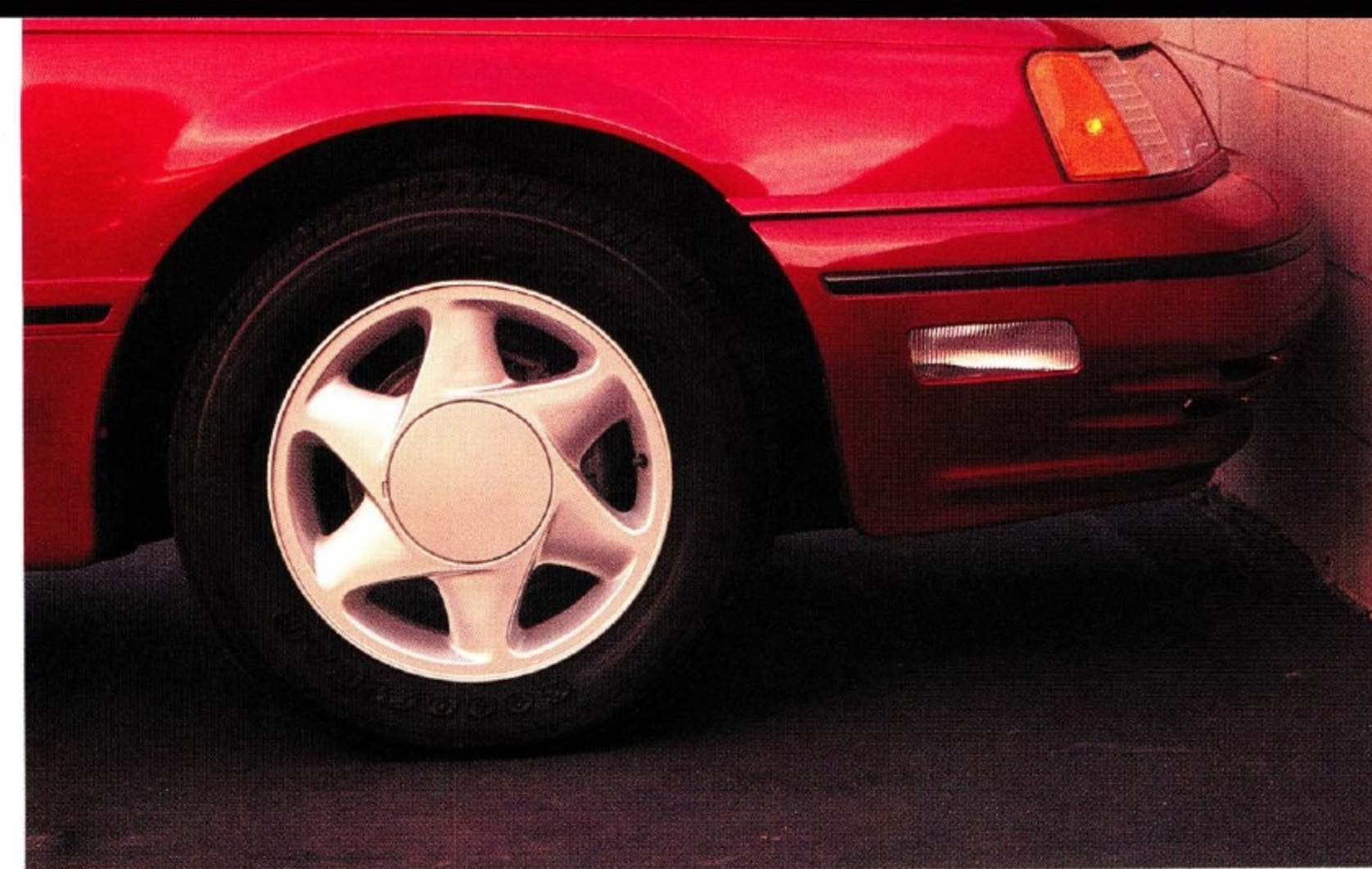
We've made a driver-side air bag supplemental restraint system standard equipment in every Taurus. The word "supplemental" is most important, because the air bag is intended for use with the lap/shoulder safety belts. Together, the air bag and safety belts comprise one of the best occupant restraint systems available today.

And you have options born of world-class engineering. The anti-lock braking system (ABS), for example, helps prevent braking-induced wheel lock-up by "pumping" the brakes up to 10 times per second. ABS helps you come to a smooth, straight stop in most operating conditions.

Features that make owning a Taurus more comfortable, more enjoyable, more assuring — they're what you would expect from a company that's obsessive in its efforts to satisfy your needs. The term we use for this is "customer-driven."



The standard electric remote-control mirrors have an aero design that helps reduce air drag on the sides of the car.



A driver-side air bag supplemental restraint system is standard in all Taurus models. The air bag is designed for use with the lap/shoulder safety belts.

The anti-lock brake system is standard in Taurus SHO and optional in L, GL and LX Sedans — in the Wagons, too, for 1991.

Six-way power driver seat adjustment (forward/back, up/down, tilt forward/back) is standard in LX and SHO; included in GL. Lockable remote fuel door and decklid releases are standard in LX and SHO; included in GL and optional in L.

Variable power-assist speed-sensitive steering provides more power assist for low-speed maneuvers, such as cornering and parking, and a progressively firmer feel of the wheel as speed increases. It's optional in L, GL and LX models.

The resilient 5-mph polycarbonate bumpers are shaped to help manage the flow of air around and under the car.

The optional Insta-Clear® heated windshield can remove 1/10 of an inch of frost at 0° Fahrenheit in just two to three minutes.

Taurus Sedan's deep-well trunk has 17 cu. ft. of space. The elasticized cargo tie-down net is standard in GL, LX and SHO models.

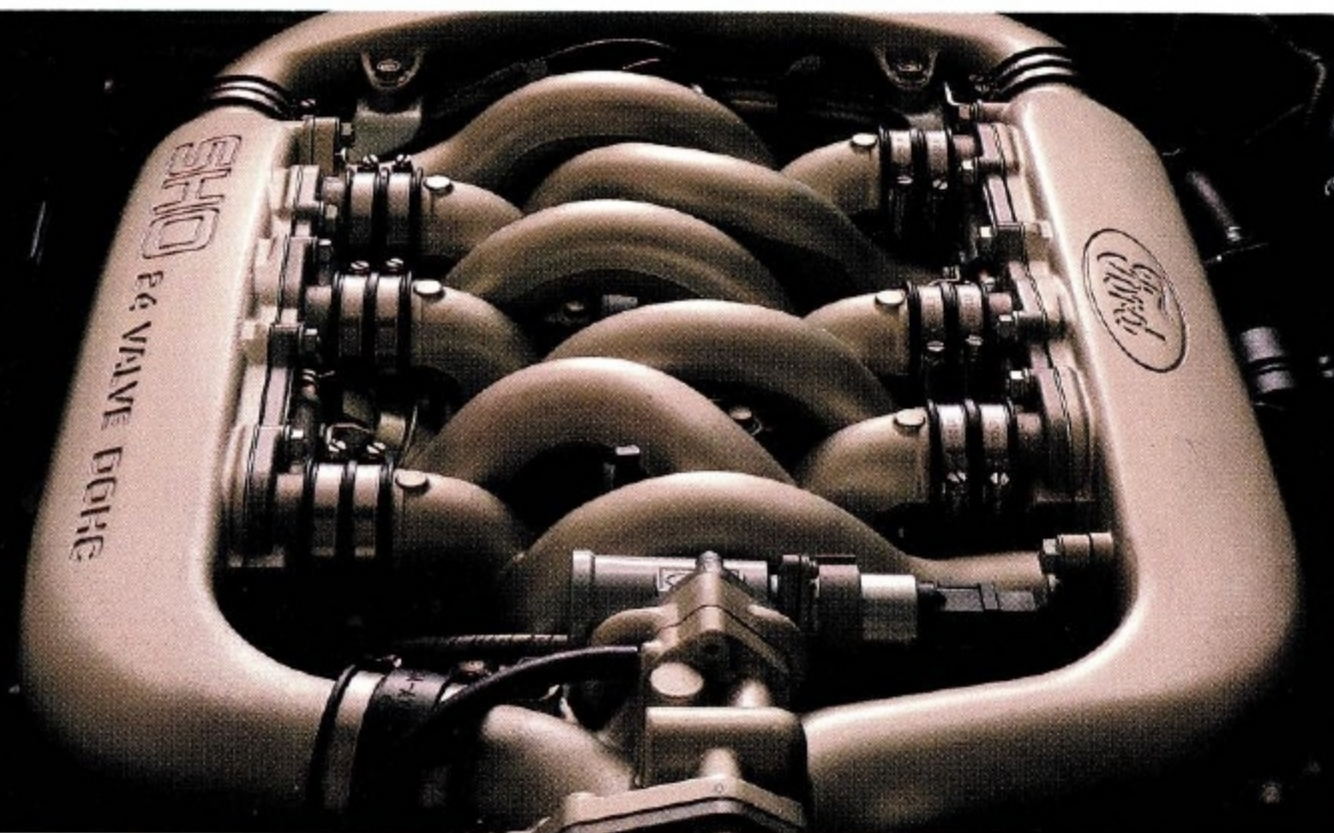
TAURUS SHO

The visual beauty of the 24-valve SHO V-6 is its dual plenum chamber design with 12 runners. Below 4000 rpm, air is taken in through six long small-diameter runners that are tuned for low-rpm breathing. Above 4000 rpm, where the engine needs more air, butterfly valves open to allow added air intake through six short large-diameter runners.

There are a lot of sedans out on the road sporting fog lamps and spoilers and fancy wheels. And that's where the excitement begins and ends. Then there's the Ford Taurus SHO, a 4-door sedan a world apart from the ordinary.

Consider its sophisticated engineering: A sequential multi-port EFI, dual overhead-cam 3.0L SHO (Super High Output) 24-valve V-6, teamed with a precise and smooth-shifting 5-speed manual transaxle. A special 4-wheel independent handling suspension. Goodyear Eagle GT+4 all-season performance radials. And 4-wheel power disc brakes with anti-lock system.

Such rare engineering credentials qualify Taurus SHO as a true world-class luxury sport sedan.



Taurus SHO, here in Oxford White, rides on new 16" Goodyear Eagle GT+4 radials. Specially designed for SHO, these "V" speed-rated directional tires combine high-performance handling with all-season traction.



Taurus SHO has a standard diagnostic instrument cluster with 8000-rpm tachometer.



TAURUS SHO



Taurus SHO in Currant Red, with standard fog lamps and aerodynamic ground effects. The special 16-in. speed-rated Goodyear Eagle GT+4 all-season performance radials on unique cast aluminum wheels present a bold, authoritative stance.

To make the comfort side of Taurus SHO's luxury/sport equation as impressive as the performance side, we've created a special 5-passenger interior that in every way befits the sophisticated power and handling of this world-class 4-door sedan.

The reclining bucket seats with console are upholstered in cloth and leather (all-leather seating surfaces optional) and are equipped with 4-way adjustable head restraints, adjustable lumbar/side bolster supports, and seat back map pockets.

Six-way power seat adjustment is provided as well, as you would expect. Adjust your seat forward/back, up/down, and tilt forward/back for the most

comfortable posture. (It's standard for the driver; included in the Preferred Equipment Package for the passenger.) Luxurious and comfortable seating, however, is just the first item on SHO's long list of appointments.

The steering wheel is wrapped in leather. Carpeting is a plush 18-oz. cut-pile. Speed control is standard, too. So are power windows and locks, remote-control fuel filler door and trunk lid releases, diagnostic instrument cluster with 8000-rpm tachometer, courtesy light group, dual illuminated visor mirrors with secondary side visors, rear window defroster, and front cornering lamps.

The SHO Preferred Equipment Package brings even more luxury-level comfort by way of the electronic climate-control air conditioning system. And convenience, too, with the autolamp, illuminated entry and keyless entry systems.

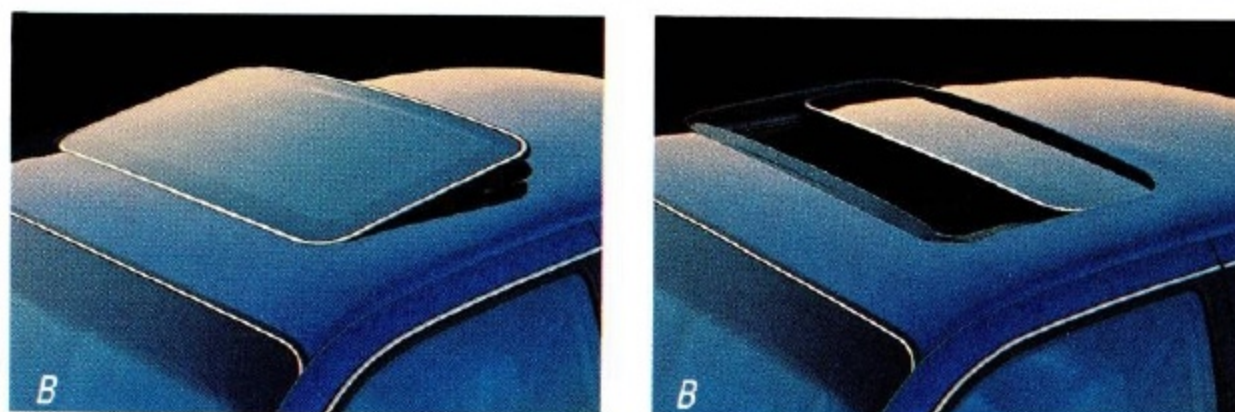
The High-Level Audio System is included as well, to which you can add the outstanding stereo quality and performance of the optional Ford JBL Audio System. An audio digital disc player is also available.

The Ford Taurus SHO. Who says you have to travel to Europe to get a luxury sport sedan possessing true world-class performance and comfort?

SHO interior with bucket seats in Mocha. Some equipment shown, such as the leather seating surfaces, is optional.



FEATURES, OPTIONS AND PREFERRED EQUIPMENT PACKAGES



(A) Electronic AM/FM stereo with cassette tape player.

(B) The power moonroof is an option available for Taurus GL, LX and SHO models.

(C) From left to right: deluxe wheel covers (standard on L and L Plus); styled road wheels; finned wheel covers (included on GL); 15-in. cast aluminum wheels (included on LX); and 16-in. cast aluminum wheels (standard on SHO).

TAURUS MEASUREMENTS		
	Sedan	Wagon
Wheelbase	106.0"	106.0"
Length	188.4"	191.9"
Height	54.1"	55.4"
Width	70.8"	70.8"
Tread: front	61.6"	61.6"
Tread: rear	60.5"	59.9"
Passenger volume index (cu. ft.)	100.1	100.3
Cargo volume index (cu. ft.)	17	45.7
Second seat up		81.1
Second seat down		
Fuel capacity (gal.)*	16.0	16.0
Passengers**	6	6

Based on MVMA Passenger Car Specifications. *18.4 with optional extended range fuel tank. Included in LX Preferred Equipment Package 208A. Standard in SHO sedan. **Five with bucket seats. Eight in wagons with optional rear facing third seat. Seven in wagons with front buckets and optional rear facing third seat.

COLORS AND TRIMS					
Exterior Paint Colors	Interior Trim Colors				
TAURUS L, GL, LX	Black*	Crystal Blue	Titanium	Currant Red	Mocha
Light Titanium	x	x	x	x	
Oxford White	x	x	x	x	x
Currant Red	x		x	x	
Black Clearcoat Metallic	x	x	x	x	x
Medium Mocha Clearcoat Metallic					x
Mocha Frost Clearcoat Metallic	x				x
Garnet Red Clearcoat Metallic			x	x	x
Electric Red Clearcoat Metallic	x		x	x	x
Amethyst Frost Clearcoat Metallic	x		x		
Crystal Blue Clearcoat Metallic		x	x		
Twilight Blue Clearcoat Metallic		x	x		
Medium Titanium Clearcoat Metallic	x		x	x	
Titanium Frost Clearcoat Metallic	x		x	x	
TAURUS SHO					
Currant Red	x				
Oxford White	x				x
Black Clearcoat Metallic	x				x
Mocha Frost Clearcoat Metallic					x

*Not available on wagon model.

SPECIFICATIONS	
TAURUS L, GL, LX	
Drivetrain	Front-wheel drive
Engine type (see page 19 for availability by model)	3.0L V-6; 3.8L V-6
Induction system	Sequential multi-port electronic fuel injection
Engine controls	Electronic Engine Control (EEC-IV) computer
Horsepower, SAE net	3.0L V-6: 140 @ 4800 rpm 3.8L V-6: 140 @ 3800 rpm
Torque, SAE net	3.0L V-6: 160 lbs.-ft. @ 3000 rpm 3.8L V-6: 215 lbs.-ft. @ 2200 rpm
Transaxle	Electronic 4-speed automatic overdrive
Front suspension (sedan/wagon)	Independent MacPherson type
Rear suspension (sedan)	Independent MacPherson type
Rear suspension (wagon)	Independent short/long arm (SLA) type
Steering	Std. power rack-and-pinion Opt. variable power speed-sensitive system
Brakes	Std. power-assisted front discs/rear drums Opt. power 4-wheel discs with anti-lock brake system
TAURUS SHO	
Drivetrain	Front-wheel drive
Engine type	3.0L DOHC 24-valve V-6
Induction system	Sequential multi-port electronic fuel injection
Engine controls	Electronic Engine Control (EEC-IV) computer
Exhaust system	Dual
Horsepower, SAE net	220 @ 6200 rpm
Torque, SAE net	200 lb.-ft. @ 4800 rpm
Transaxle	5-speed manual overdrive
Front/rear suspension system	Independent MacPherson type with handling components
Steering	Power rack-and-pinion, 15.2:1 ratio
Brakes	Power 4-wheel discs with anti-lock brake system

OPTIONS AND PREFERRED EQUIPMENT PACKAGES

Note: Package content is subject to change.

X = Included in package S = Standard O = Optional

	L STD	L PLUS	GL	LX	LX	SHO
	201A	203A	204A	207A	208A	211A
Power Convenience Group:						
Power door locks	O	X	X	S	S	S
Power side windows	O	O	X	S	S	S
Six-way power driver's seat			X	S	S	S
Manual-control air conditioning	O	X	X	S		
Rear window defroster	O	X	X	X	X	S
Paint stripe		X	X	X	X	
Styled road wheels		O	O	O	O	
Remote decklid and fuel door releases (sedan only)	O	O	X	S	S	S
Remote fuel door release (wagon only)		O	X	S	S	
Light group (1)	O	O	X	S	S	S
Rocker panel moldings		O	X	S	S	
Electronic AM/FM stereo with cassette tape player	O	O	X	X		
Speed control	O	O	X	X	X	S
Finned wheel covers	O	O	X			
Cast aluminum wheels with P205 15" tires (2)		O	O	X	X	
Autolamp system (3)				X	X	X
Floor mats, front and rear	O	O	O	X	X	X
Leather-wrapped steering wheel (with speed control)	O	O	O	X	X	S
Illuminated entry system (4)			O	X	X	X
Premium sound system (5)		O	O	X		
Anti-lock braking system (with V-6 engine)	O	O	O	O	X	S
Electronic climate-control air conditioning (with V-6 engine)			O	O	X	X
High-level audio system (6)		O	O	O	X	X
Keyless entry system (7)			O	O	X	X
Power radio antenna		O	O	O	X	X
6-way power dual-control seats			O	O	X	X
Electronic instrument cluster (8)			O	O	X	
Variable power-assist speed-sensitive steering (with V-6 engine)	O	O	O	O	X	
3.0L SEFI V-6/electronic 4-speed automatic (sedan)	S	S	S	S		
3.0L SEFI V-6/electronic 4-speed automatic (wagon)	S	S	S			
3.8L SEFI V-6/electronic 4-speed automatic (sedan)		O	O	O	X	
3.8L SEFI V-6/electronic 4-speed automatic (wagon)		O	O	S	S	
3.0L SEFI DOHC 24-valve V-6/5-speed manual						S
P205/70R14 BSW (WSW optional)	S	S	S	S	S	
P215/60R16 94V BSW all-season high performance						S
Conventional full-size spare tire	O	O	O	O	O	
Cloth split bench seat	S	S	S	S	S	
Vinyl split bench seat	O	O	O			
Cloth split bench seat with leather seating surfaces				O	O	
Cloth bucket seats/console			O	O	O	
Cloth bucket seats/console with leather seating surfaces			O	O	O	
Cloth bucket seats/console with cloth/leather seating surfaces						S
Cloth bucket seats/console with leather seating surfaces						O
Heavy-duty 84-amp battery (for 3.0L V-6 engine)	O	O	O	O		
Cargo area cover (wagon only)	O	O	O	O	O	
Cornering lamps		O	O	S	S	S
Engine block immersion heater	O	O	O	O	O	O
Extended range fuel tank	O	O	O	O	X	S
Ford JBL audio system (sedan only)		O	O	O	O	O
Diagnostic instrument cluster (9)				S		S
Fold-out picnic table (wagon only)	O	O	O	O	O	
Power moonroof			O	O	O	O
Dual illuminated visor mirrors (includes side sun visors)		O	O	S	S	S
Clearcoat paint	O	O	O	O	O	O
Automatic parking brake release	O	O	O	S	S	
Audio digital disc player (with high-level audio system)		O	O	O	O	O
Radio credit option	O	O	O	O		
Heavy-duty load-carrying suspension (with V-6 engine)	O	O	O	O	O	
Rear facing third seat (wagon only)	O	O	O	O	O	
Rear window wiper/washer (wagon only)	O	O	O	O	O	
Insta-Clear® heated windshield			O	O	O	

MAJOR STANDARD FEATURES

Exterior

- Single aero-design halogen headlamps
- Fog lamps (SHO)
- 5-mph polycarbonate bumper system
- Dual electric remote-control mirrors
- Shingled one-piece doors with concealed drip moldings
- Tinted glass—complete
- Bodyside protection moldings
- Lower bodyside protection: urethane coating on lower doors and rocker panels (L, GL, SHO); color-keyed protective cladding (LX, with spats on SHO)
- Aero-design roof luggage rack (wagons)
- High-mount brake lamp

Interior

- Seats: reclining cloth split bench (L, GL, LX); reclining cloth bucket (SHO)
- Driver-side air bag supplemental restraint system
- 16-oz. floor carpeting
- Tilt steering column
- Electronic AM/FM stereo search radio (may be deleted for credit)
- Interval windshield wipers
- Trip odometer
- Electronic digital clock
- Side window demisters
- Child-proof rear door locks
- Carpeted and lighted luggage (sedan) and cargo (wagon) compartments
- Two-way liftgate (wagon)
- Built-in cargo tie-downs (GL and LX wagons)
- Lockable under-floor storage compartment, except with optional full-size spare tire (wagon)

(1) Dual beam map light, engine compartment light, dual courtesy lights under instrument panel, and headlamps-on reminder chime.

(2) Styled road wheels may be substituted on LX.

(3) Turns headlamps on and off automatically.

(4) Lifting front door handle illuminates the key bezel and activates the interior lights.

(5) Six premium speakers plus power amplifier.

(6) Includes: electronic volume control; separate power control; pop-out controls for bass, treble, balance and fade; motorized cassette tape eject; seek tuning for radio (up/down) and cassette tape (forward/reverse); scan tuning for radio and tape player; AM stereo reception — C-Quam encoded (C-Quam is a registered trademark of Motorola, Inc.); DNR noise reduction for radio (DNR is a trademark of National Semiconductor Corp.); Dolby noise reduction for tape player (Dolby is a registered trademark of Dolby Laboratories Licensing Corp.); automatic metal/CrO2 tape equalization; 80 watts RMS continuous power; six premium speakers and power amplifier/boosters.

(7) A preset code allows the locking and unlocking of the doors without the use of a key. Includes the illuminated entry system.

(8) Includes electronic digital speedometer/odometer, electronic tachometer, electronic fuel and temperature gauges, and English/metric conversion functions. The Tripminder® computer calculates and displays trip average fuel economy, instantaneous fuel economy, distance to empty, cumulative trip distance, and also provides low fuel alert, low oil level alert, speed alarm feature, and service interval reminder. When the car is started, the Diagnostic System Scanner checks for door ajar, liftgate (wagon) ajar, headlamp out, taillamp out, brake lamp out, and oil level. The 18-gal. extended fuel tank is included.

(9) Provides tachometer plus signals for door ajar, low brake fluid, low washer fluid, low oil level, low fuel, headlamp out, taillamp out, brake lamp out. Features included with optional electronic instrument cluster.

6-YEAR/100,000-MILE CORROSION PROTECTION

Taurus' corrosion warranty coverage for outer body panel rust-through is 6 years or 100,000 miles, whichever comes first. See your Ford Dealer for a copy of this limited warranty.



Participating Ford Dealers offer the Lifetime Service Guarantee, which guarantees their customer-paid work on your Ford vehicle for as long as you own it. A covered repair is paid for once. If it ever has to be fixed again, the repairing dealer will fix it free. Ask to see the Lifetime Service Guarantee when you visit your participating Ford Dealer.

Genuine Ford and Motorcraft original equipment replacement parts meet the same high standards as those installed in production.

OPTIONS AVAILABILITY

Options shown or described in this catalog are available at extra cost and may be offered only in combination with other options or subject to additional ordering requirements or limitations.



The leasing alternative is available to qualified lessees through your participating Ford Dealer, who can arrange a Red Carpet Lease® tailored to your circumstances through Ford Credit. A wide variety of financing plans are also available.

PRODUCT CHANGES

Ford Division reserves the right to change product specifications at any time without incurring obligations.

"ASK YOUR FORD DEALER"

Following publication of this catalog, certain changes in standard equipment, options, prices and the like, or product delays, may have occurred which would not be included in these pages. Your Ford Dealer is your best source for up-to-date information.

