

1991

FORD THUNDERBIRD



THUNDERBIRD SC

The unique sound under the hood means there is something very special indeed about this Thunderbird. At its heart is a power-boosting supercharger with intercooler that transforms the sequential EFI 3.8 liter V-6 engine into a powerplant capable of over 200 hp and 300 lbs.-ft. of torque (supercharging and its benefits are discussed fully on page 6).

But Thunderbird Super Coupe is much more than just raw power. Sophisticated componentry provides performance in the complete sense of the word.

The computer-controlled anti-lock system is combined with 4-wheel disc brakes. The suspension electronically adjusts to changing vehicle and road conditions (or the "firm" mode may be selected manually by the driver). The steering system is "speed sensitive" to deliver the proper feel for the driving situation at hand.

Wide 16"-diameter aluminum wheels come with Goodyear Eagle performance tires with an aggressive tread. The Traction-Lok axle automatically shifts some of the driving force, or torque, to the wheel with the most traction under adverse driving conditions like ice, snow or mud.

Thunderbird Super Coupe is a performance car designed for the 90's. A technological manifestation of the "driver's car," it's an automobile right for its time.



*Thunderbird Super Coupe
with the optional Super
Coupe Preferred
Equipment Package
shown in Titanium Frost
Clearcoat Metallic.*

THUNDERBIRD SC

The split fold down rear seat is included with optional leather seating surfaces in Super Coupe. It allows access to the trunk from inside.



Buckled into the articulated sport seat, the driver becomes aware of the purposefulness of the layout. The Super Coupe instrument panel and surrounding controls were designed with the emphasis squarely on the driving function. Gauges are placed to be quickly and easily read, and knobs and push buttons are placed to be comfortably reached. It's all part of the ergonomic integrity of Thunderbird.

But functional doesn't necessarily mean spartan. It simply means that there's no place for superfluous ornamentation here. Decorative appliques, moldings and other items not directly involved with the business of driving are conspicuous by their absence. Super Coupe instrumentation was designed for a bold, aggressive

appearance in keeping with the look, capability and feel of the car itself.

Super Coupe's performance analog speedometer features white-on-black graphics and trip odometer. There's a tachometer, of course, and between the two are the supercharger boost gauge and fuel gauge. Temperature and oil pressure gauges are positioned at either end of the cluster. The air conditioning controls are arranged for convenient operation and feature clear graphics for easy reading.

The leather-covered 5-speed manual transmission shift knob is designed to be comfortable to grip and shift, and the switch for the automatic ride control suspension lets the driver override the computer and initiate the "firm" mode

when maximum handling is desired. Included in the optional Super Coupe Preferred Equipment Package 157A is the electronic AM/FM stereo radio with cassette tape player which is located near the top of the instrument panel for ease in changing radio stations or cassette tapes.

Super Coupe's front articulated sport seats provide firm support and are body-contoured to help hold you in place when cornering. Each seat has a back bolster and lumbar support which include infinite power adjustments.



Thunderbird Super Coupe interior shown with optional Automatic Overdrive transmission and leather seating surfaces in Black.

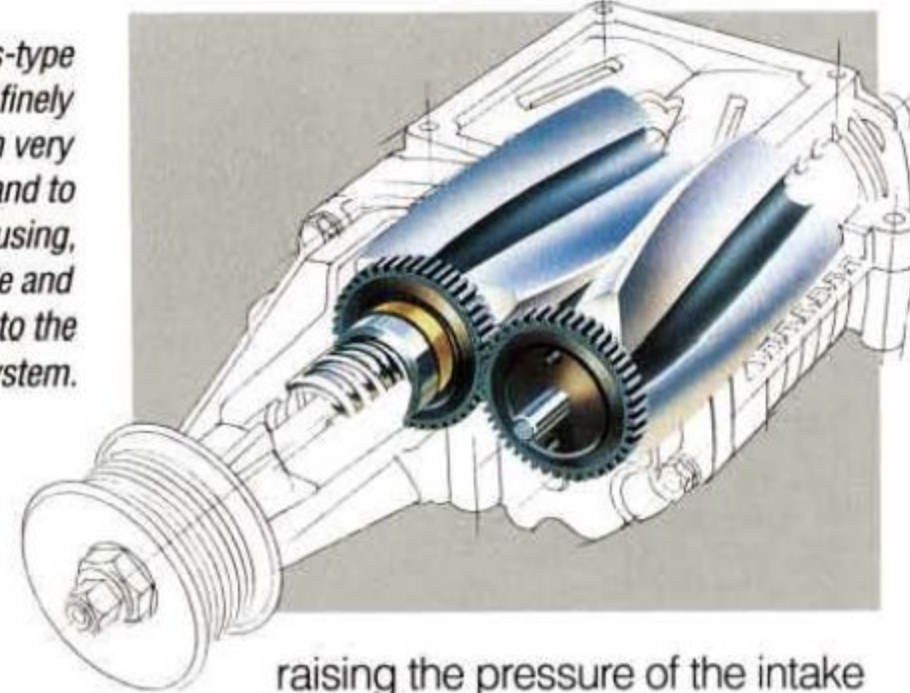
Some equipment shown on these pages is optional.

THUNDERBIRD POWER

The standard Thunderbird engine is the 3.8 liter V-6 with a sequential electronic fuel injection system which provides even greater efficiency than conventional multi-port EFI. Lightweight, high-strength aluminum and magnesium components help the vehicle's power-to-weight ratio.

In Thunderbird Super Coupe, the 3.8L V-6 is modified and supercharged. Simply put, supercharging is a means to increase the output of an engine (its horsepower) by

Super Coupe's Roots-type supercharger: the finely fitted rotors spin very close to each other and to the inside of the housing, pulling air inside and forcing it into the induction system.



raising the pressure of the intake charge above atmospheric.

The effect of supercharging is easy to describe. In the case of Super Coupe, the exhilarating and responsive acceleration makes it very difficult to believe there are only 6 cylinders. The performance is what you would expect to experience with a big V-8. And yet, when cruising at a constant rate of speed, the supercharger bypasses for the benefit of 6-cylinder fuel economy

(EPA mileage estimates not available at press time). Briefly, here's how supercharging works:

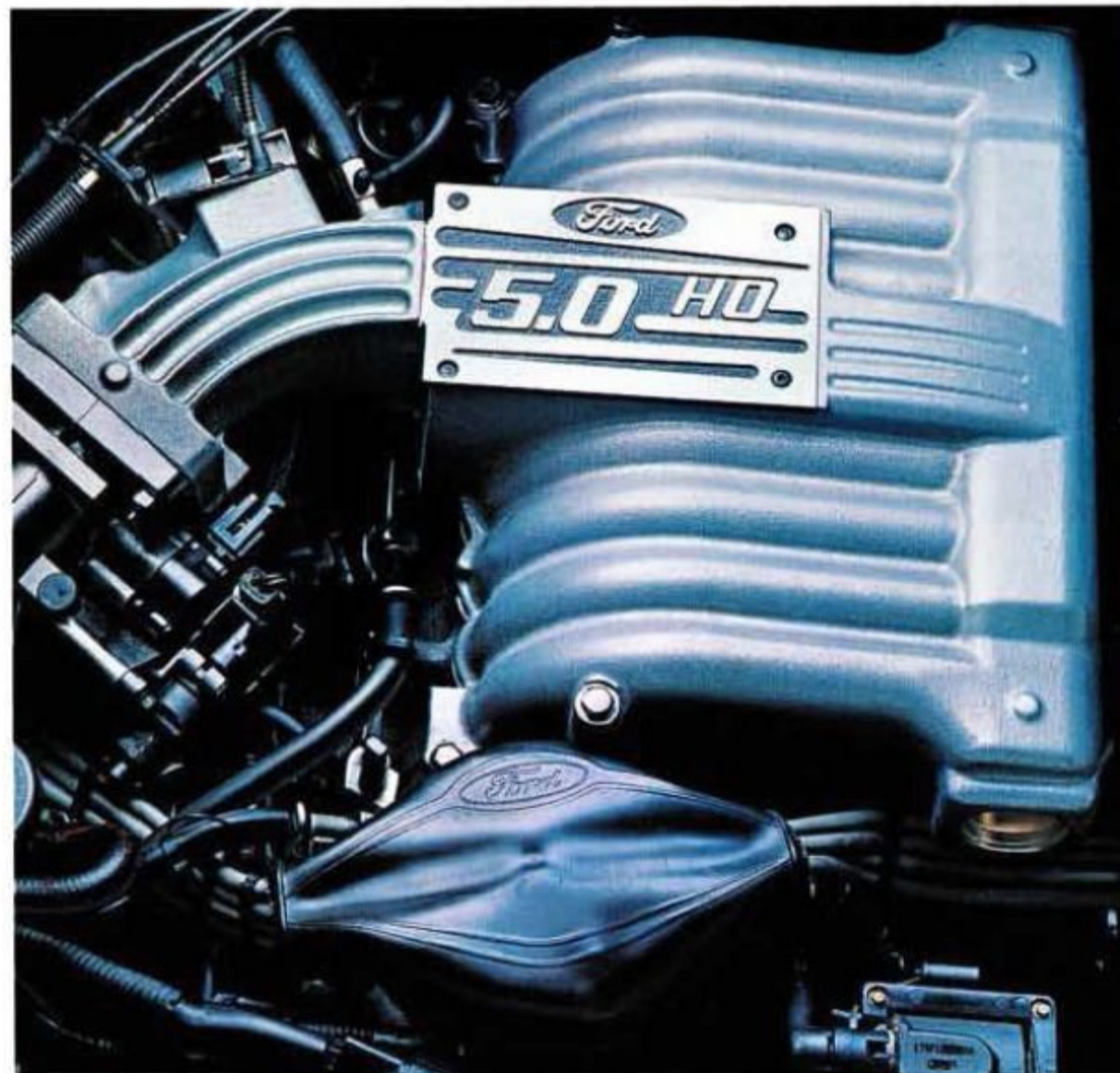
The greater the mass of the fuel/air mixture supplied to the cylinders, the more powerful the combustion stroke. A supercharger is a positive displacement air pump that delivers this increased mass. Unlike a turbocharger, it works across a very broad range of engine rpm. The result is quick response even at start-up speeds without the momentary "lag" associated with turbocharging.

Some supercharging systems, like the one used on Thunderbird Super Coupe, carry this principle even further with a device called an intercooler. Located between the supercharger and the combustion chamber, the intercooler lowers the temperature of the air passing through it, increasing its density and thus increasing

the engine's horsepower even more.

Superchargers (unlike exhaust-driven turbochargers) are mechanically driven by the engine's crankshaft to deliver nearly instantaneous response, the kind associated with larger displacement engines. The supercharger used in Thunderbird is the positive displacement Roots-type. It delivers boost at lower compressor rpm and over a much broader engine-rpm range than some other types (those which rely on centrifugal force, for example).

For those who prefer their performance delivered in a more traditional manner, Thunderbird and Thunderbird LX can be outfitted with the optional 5.0 Liter high-output V-8. This contemporary, responsive powerplant, which includes the benefits of sequential electronic fuel injection, turns out 200 horsepower at 4,000 engine rpm and 275 lbs. ft. of torque at 3,000 rpm.



Right: The only supercharged Ford Motor Company vehicle available, Super Coupe generates 210 hp @ 4,000 engine rpm and 315 lbs. ft. of torque @ 2,600 rpm.

Left: The optional 5.0 liter high-output V-8 has a proven overhead valve design with modified combustion chambers. Forged aluminum alloy pistons allow good heat dissipation.



THUNDERBIRD LX

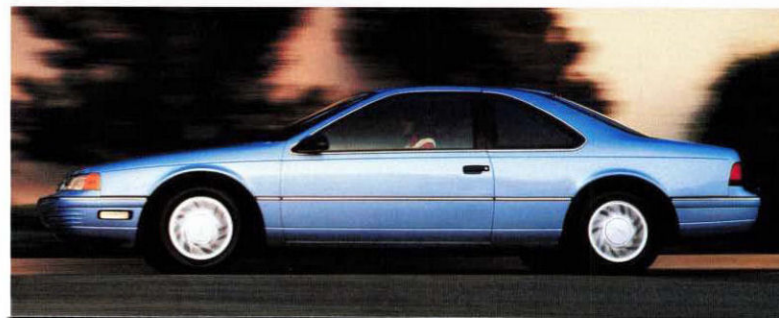
Traditionally known for its luxurious interior, LX also benefits from the same engineering technology that gives the standard Thunderbird such a penchant for pursuit of the open road. The 3.8 liter V-6 engine with sequential multiple-port electronic fuel injection provides efficient, impressive power. On the highway, the automatic overdrive transmission's fourth gear allows the engine to operate in the lower rpm ranges for reduced wear and enhanced fuel efficiency (EPA estimates not available at press time).

The long-spindle, short/long arm (SLA) front suspension and fully independent rear suspension combine for taut handling. Nitrogen gas-pressurized shocks and variable-rate coil springs also contribute to vehicle handling while maintaining an overall smooth ride.

The LX power rack-and-pinion steering system is "speed sensitive" for enhanced driving pleasure. A computer adjusts the amount of power assist to the exact requirements of the driving situation for smooth, low-effort steering in tight, low-speed maneuvers and for a progressively firmer feel as speed increases.

The LX series combines a comfort oriented environment (detailed on the following pages) with ride and handling for a truly satisfying driving experience.

*Thunderbird LX with
optional Preferred
Equipment Package 155A
shown in Crystal Blue
Frost Clearcoat Metallic.*



THUNDERBIRD LX

The interior is the focus for LX premium appointments. The seats are upholstered in special cloth trimmed with leather and vinyl. The door trim panels, which include courtesy lights, are richly finished. The power driver's seat adjusts six ways: forward/back, up/down and tilt forward/back. Both visors have a lighted mirror.

An analog tachometer is included in the performance instrument cluster and convenience equipment includes front seat reading lights, a handy engine compartment light, and front and rear courtesy lights. The illuminated entry system lights the interior and the door lock cylinders for about 20 seconds or until the steering column is unlocked.

Also standard with LX are power locks, electric remote-control mirrors, speed control and a tilt steering wheel, all very popular convenience items. Entertainment is supplied by the electronic AM/FM stereo search radio with cassette tape and clock.

Owning a Thunderbird LX can be even more rewarding with the addition of Preferred Equipment Package 155A. It's a group of popular options with a substantial savings included in the price of the group. Aluminum wheels and P215/70R15 tires, rear window defroster and the keyless entry system are just some of the items included in this desirable package.

For state-of-the-art, 9-speaker sound reproduction, the electronic cassette radio with premium sound, compact disc player and Ford JBL Audio System is optional with all series.



Thunderbird LX interior with optional Preferred Equipment Package 155A shown in Currant Red. Left: LX performance analog instrumentation includes a tachometer.

Some equipment shown on these pages is optional.

THUNDERBIRD

Thunderbird's profile is eye catching, to be sure. But it's also functional, using sleek lines to achieve the benefits of aerodynamics so important in today's automobiles — lower wind resistance and improved handling. A rear-wheel-drive configuration and performance-oriented componentry underscore the Thunderbird heritage, its reputation as the "driver's car."

The 3.8 liter V-6 engine features the precision and efficiency of a sequential electronic fuel injection system (EPA estimates not available at press time). The Automatic Overdrive transmission, with its fourth-gear highway efficiency, is standard, along with the precision and ease of power rack-and-pinion steering. The benefits of the suspension system, responsible in large part for Thunderbird driving pleasure, are discussed on page 14.

Inside, five adults enjoy a roomy interior. The front bucket seats have individual recliners and an automatic shoulder belt restraint system is standard equipment.

Thunderbird comes equipped with the kinds of features that add to the enjoyment of driving. Air conditioning is complemented by tinted glass all around. An electronic AM/FM stereo radio provides entertainment. Interval wipers are a real asset in drizzly weather and power windows provide convenience all year.

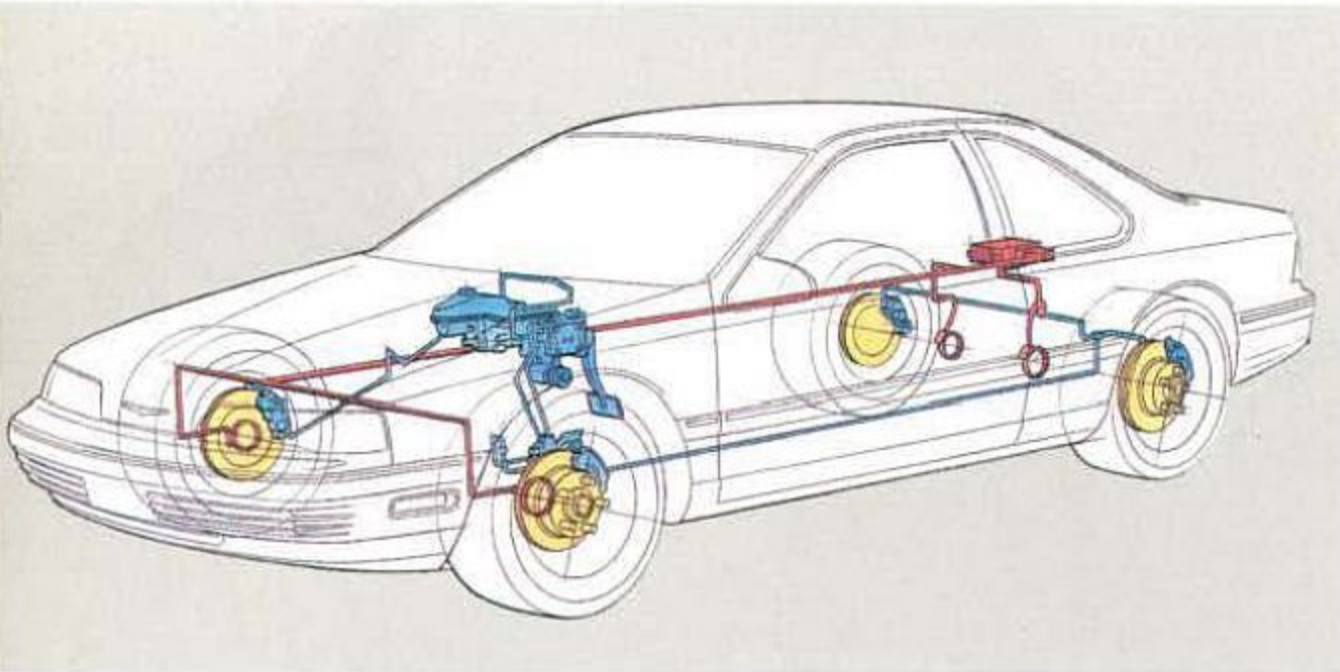


Thunderbird equipped with optional Preferred Equipment Package 151A shown in Electric Red Clearcoat Metallic.

THUNDERBIRD ENGINEERING

Over the years, Thunderbird has come to be known as a "driver's car," regardless of model or series. That's because it's been engineered to appeal to those who take driving seriously.

The suspension system combines a long-spindle, short/long arm (SLA) front suspension with a fully independent rear setup for taut handling. Front and rear stabilizer bars provide added control. The



With the anti-lock braking system, special sensors monitor the speed of each wheel during braking. The system takes over if impending wheel lock-up is detected.

rear suspension control arms are "double isolated." This isolation by both the subframe mounts and the suspension bushings helps reduce harshness.

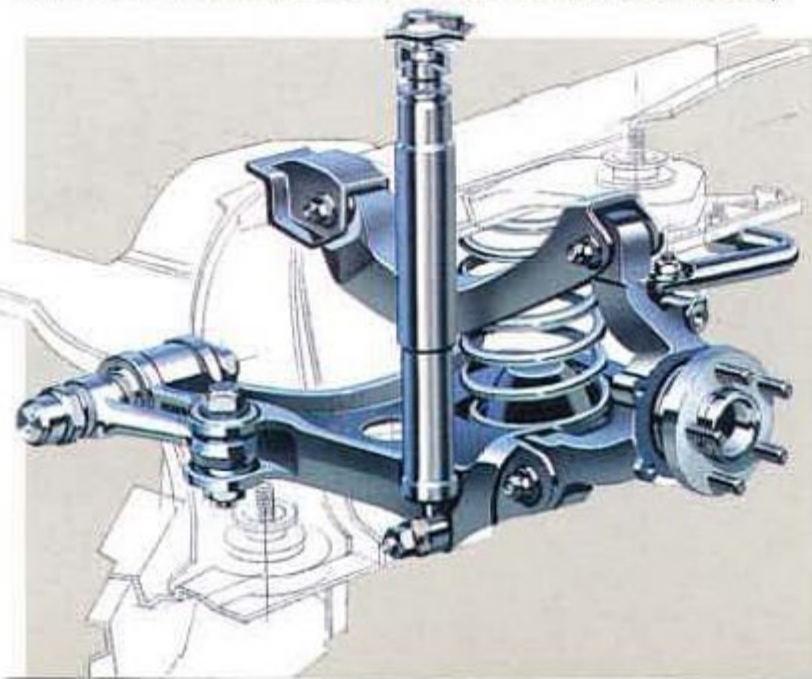
Thunderbird's shock absorbers contain a low-pressure charge of inert nitrogen gas. The gas suppresses foaming of the hydraulic fluid due to rapid bumps or similar agitation. This, with the help of variable-rate coil springs, means the ride

is smooth under normal circumstances, yet firm enough for handling situations.

For more technologically advanced hardware, the car to experience is Super Coupe. A high-performance driver knows that in addition to what is seen, important information about the road and the car is being fed back through the seat, the steering wheel and the pedals. In Super Coupe, some of this "input" is sensed by technologically advanced suspension, steering and braking systems that help the driver interact with the car and the road.

The computer-controlled "speed-sensitive" power steering (also standard on LX) adjusts the amount of power assist to the situation by responding to data from speed and steering wheel sensors. This results in smooth, low-effort steering in tight, low-speed maneuvers and a progressively firmer feel as speed increases.

Super Coupe's suspension system incorporates a microprocessor that monitors signals from speed, brake pressure, steering and acceleration sensors and adjusts shock absorber damping automatically to optimize the ride/handling according to the input. Shock damping is "normal" for a smooth ride or "firm" when extra handling is required ("firm" mode may also be selected manually by means of a switch located on the center console).



Thunderbird's rear suspension is fully independent for rough-road handling and double-isolated to improve riding smoothness.

Hard braking can cause wheel lock-up which reduces driver control, especially on slippery surfaces. The computer technology built into Super Coupe's anti-lock brake system (optional with Thunderbird and Thunderbird LX) virtually eliminates brake-induced wheel lock-up.

Special sensors monitor the speed of each wheel during braking. If impending wheel lock-up is detected, the brake pressure from the hydraulic unit to the wheels is automatically modulated up to ten times per second. The brakes are applied and released repeatedly in the same way you were probably taught to "pump your brakes" when you felt a loss of traction. But the anti-lock brake system operates at a rate of speed far exceeding human capability, providing the driver a much greater degree of steering control.

The system includes power-assisted 4-wheel disc brakes. 10.8" in diameter up front, 10.0" in diameter in the rear, these brakes have a total swept area of 357.4 square inches for quick stopping action and reduced fade under severe braking.

These sophisticated standard features, along with the supercharged, intercooled V-6 engine, 5-speed manual transmission and Goodyear Eagle tires, contribute to Super Coupe's extraordinary driving capability and exhilarating performance.

Thunderbird Super Coupe with the optional Super Coupe Preferred Equipment Package shown in Bright Red Clearcoat.



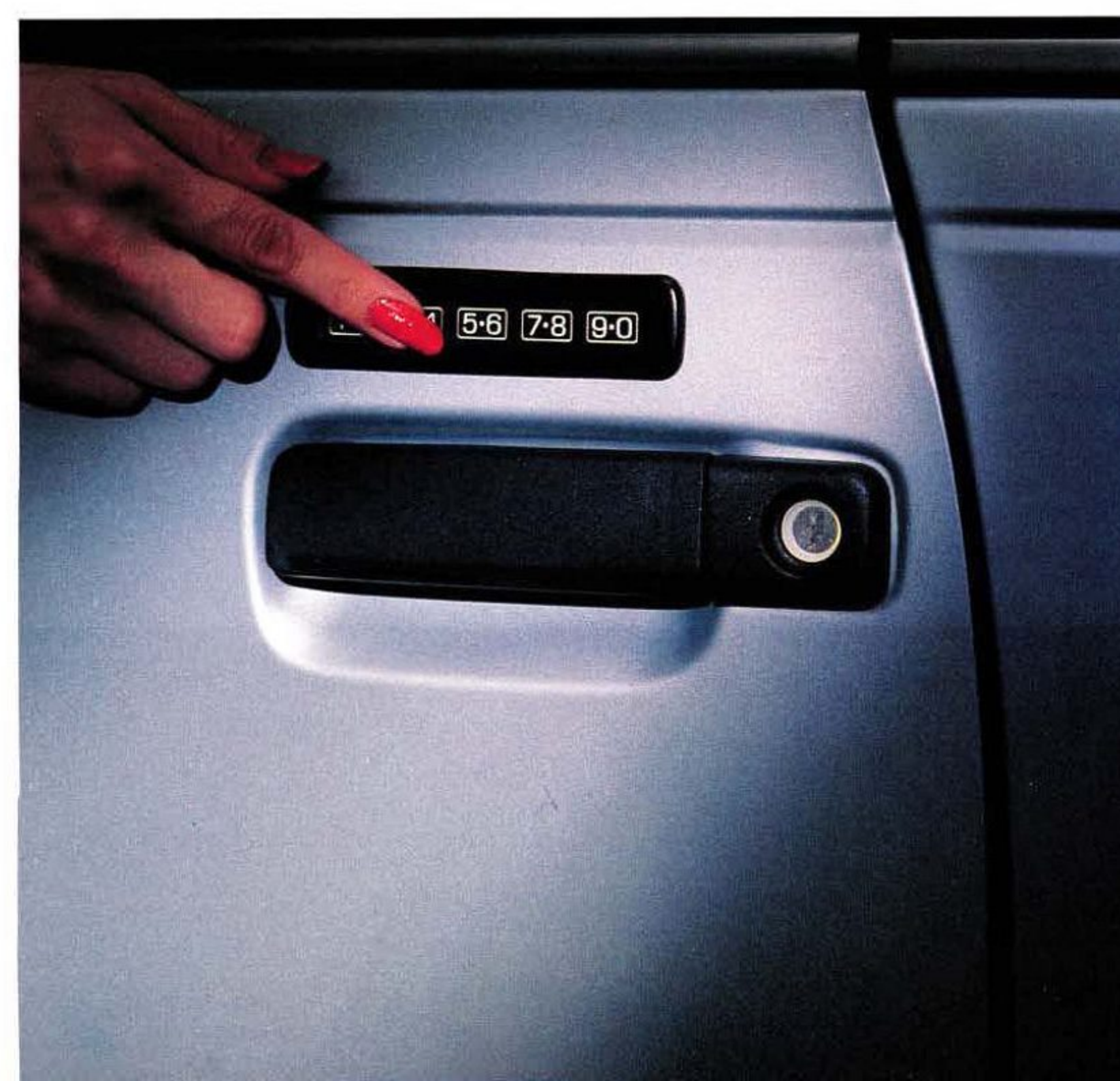
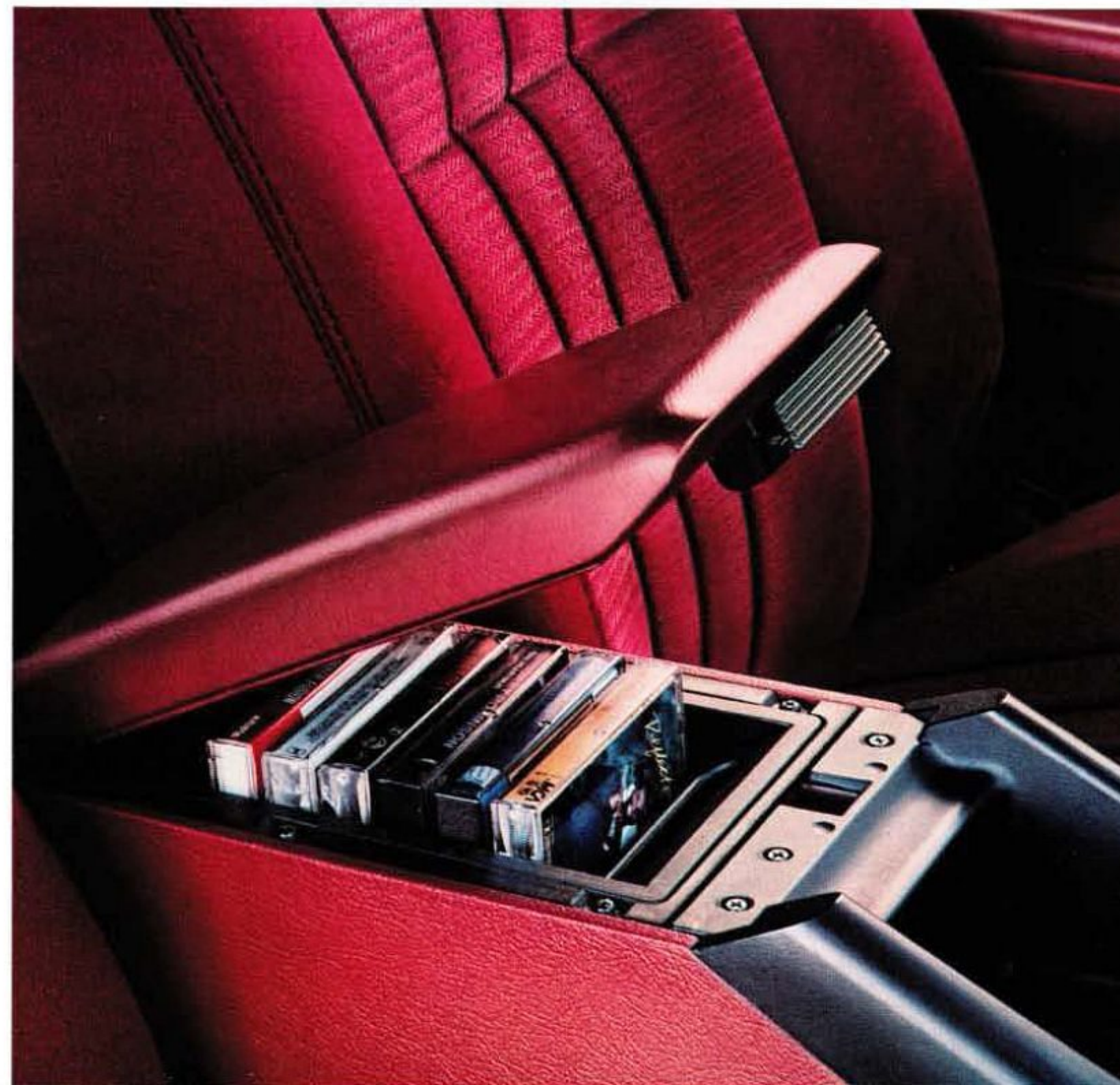
THUNDERBIRD DESIGN

The term "ergonomics" has been used more and more over the past few years with regard to automotive design. It refers to the science of planning a vehicle's interior to best suit those who will occupy it. Roominess, placement of controls and visibility are all functions of ergonomics.

Thunderbird's design puts the emphasis on optimum driver and passenger room and comfort. Head room, shoulder room, hip room, leg room — all combine to create an interior that's remarkably spacious. Seat contours and firmness are the result of thousands of miles of testing and evaluation. And there are areas for storage thoughtfully placed in the doors and in the console as well as a host of standard and optional convenience features.



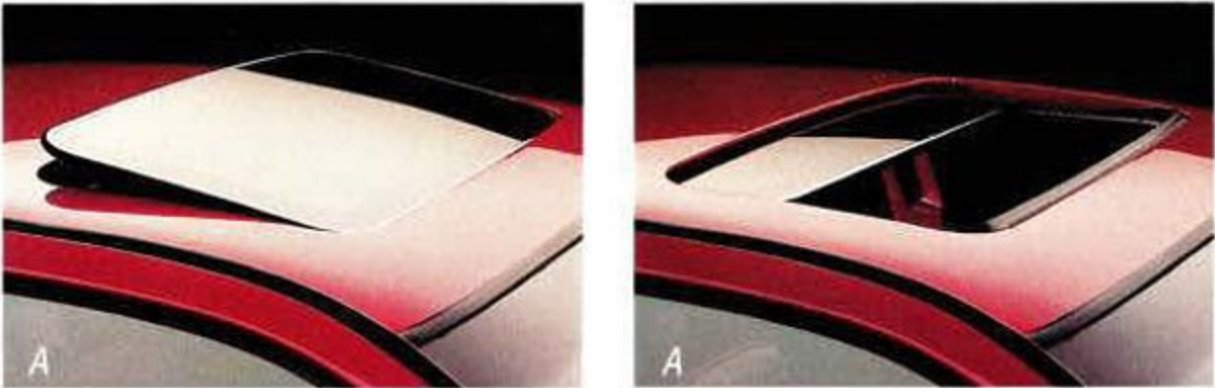
Dual electric remote-control mirrors are standard on LX and Super Coupe, included with Preferred Equipment Package 151A.



An automatic front shoulder belt restraint system with manual lap belt is standard with all series.

Thunderbird's roomy deep-well trunk provides 14.7 cubic feet of luggage space and a comfortably low lift height to facilitate loading and unloading. Power windows are standard on all Thunderbirds. Controls are located in the door panel armrests for easy identification and comfortable operation (see page 19 for availability of power door locks and electric mirrors shown also). The keyless entry system, included with LX Preferred Equipment Package 155A, offers added convenience. The transmission floor shift is contained in a full-length console. The cover of the handy storage bin also acts as an armrest for the driver or front passenger.

FEATURES, OPTIONS AND PREFERRED EQUIPMENT PACKAGES



(A) For that great open air feeling, the power moonroof is optional with all Thunderbirds.

(B) The electronic AM/FM stereo search radio with cassette tape and clock is included in the Thunderbird and Thunderbird LX Preferred Equipment Packages.

(C) Locking wire-style wheel covers (left) are optional with Thunderbird and LX. Cast aluminum wheels are optional with Thunderbird and included with the LX Preferred Equipment Package.

COLORS & TRIMS					
THUNDERBIRD AND THUNDERBIRD LX					
Exterior Paint Colors	Interior Trim Colors				
	Titanium	Crystal Blue	Currant Red	Mocha	Black
Oxford White	X	X	X	X	X
Black Clearcoat	X	X	X	X	X
Mocha Frost Clearcoat Metallic				X	X
Medium Mocha Frost Clearcoat Metallic				X	X
Electric Red Clearcoat Metallic	X		X		X
Bright Red Clearcoat	X				X
Steel Blue Frost Clearcoat Metallic				X	X
Crystal Blue Frost Clearcoat Metallic	X	X			X
Twilight Blue Clearcoat Metallic	X	X			X
Medium Titanium Clearcoat Metallic	X		X		X
Titanium Frost Clearcoat Metallic	X		X		X
THUNDERBIRD SUPER COUPE					
	Titanium	Crystal Blue	Currant Red		Black
Oxford White	X	X	X		X
Black Clearcoat	X	X	X		X
Bright Red Clearcoat	X				X
Twilight Blue Clearcoat Metallic	X	X			X
Titanium Frost Clearcoat Metallic	X		X		X
Some of the paint and trim colors are shown in this catalog. On the printed page, of course, colors are at best only representative of the originals. Your Ford Dealer can show you actual samples of the paint colors and trim materials presented above.					

SPECIFICATIONS	
THUNDERBIRD AND THUNDERBIRD LX	
Engine type	3.8 liter V-6
Horsepower/compression ratio	140/9.0:1
Engine type (optional)	5.0 liter V-8
Horsepower/compression ratio	200/9.0:1
Induction system	Sequential multiple-port electronic fuel injection
Transmission	Automatic overdrive
Front suspension	Long-spindle SLA variable-rate coil springs, double-acting gas-pressurized shock absorbers, 1.1-inch dia. stabilizer bar
Rear suspension	Independent H-arm, toe control link, variable rate springs, double-acting gas-pressurized shock absorbers, 1.04-inch dia. tubular stabilizer bar
Steering	Standard: Power rack-and-pinion, ratio 14.1:1 on center LX: Speed-sensitive variable-assist power, ratio 14.1:1 on center
Brakes	Power front disc/rear drum
Brakes (optional)	Anti-lock braking system, power 4-wheel disc
Wheels	Stamped steel 15"x6.0"
Wheels (optional)	Cast aluminum 15"x6.5"
Tires	P205/70R15 BSW
Tires (optional)	P205/70R15 WSW; P215/70R15 BSW
THUNDERBIRD SUPER COUPE	
Engine Type	3.8 liter supercharged, intercooled V-6 with dual exhausts
Horsepower/compression ratio	210/8.2:1
Induction system	Sequential multiple-port electronic fuel injection
Transmission	5-speed manual overdrive; Automatic Overdrive optional
Front suspension (in addition to standard)	Automatic ride control suspension, 1.2-inch dia. stabilizer bar
Rear suspension (in addition to standard)	Automatic ride control suspension, .9-inch dia. solid stabilizer bar
Rear axle	Traction-Lok
Steering	Speed-sensitive, variable-assist power, ratio 14.1:1 on center
Brakes	Anti-lock braking system, power four-wheel disc
Wheels	Cast aluminum 16"x7.0"
Tires	Goodyear Eagle P225/60 performance
Tires (optional)	All-season performance

OPTIONS AND PREFERRED EQUIPMENT PACKAGES			
Note: Package content is subject to change.			
X = Included in package (package discount is lost if deleted)	Std.	LX	Super Coupe
S = Standard O = Optional	151A	155A	157A
Six-way power driver's seat	X	S	X
Electronic AM/FM stereo search radio with cassette tape and clock	X		X
Rear window defroster	X	X	X
Luxury group	X	X	X
Includes: Bright window moldings	X	S	
Speed control and tilt steering wheel	X	S	X
Dual electric remote-control mirrors	X	S	S
Power lock group (1)	O	S	X
Electronic automatic temperature control		X	X
Aluminum wheels and P215/70R15 tires	X	X	
Electronic premium cassette radio with premium sound	O	X	O
Power radio antenna	O	X	X
Autolamp group (2)	O	X	O
Cornering lamps	O	X	O
Front floor mats	O	X	O
Keyless entry system	O	X	O
Six-way power front passenger seat	O	X	O
OTHER OPTIONS			
Anti-lock braking system with 4-wheel disc brakes and Traction-Lok axle	O	O	S
Anti-theft system	O	O	O
Traction-Lok axle	O	O	S
Ford JBL Audio System	O	O	O
Compact disc player	O	O	O
Electronic instrument cluster (3)		O	
Illuminated entry system	O	S	O
Light/convenience group (4)	O	S	O
Automatic Overdrive transmission	S	S	O
Leather seating surfaces (includes split fold down rear seat with Super Coupe)		O	O
Power moonroof	O	O	O
Clearcoat paint	O	O	O
Vehicle maintenance monitor (5)	O	O	O
Conventional spare tire	O	O	
White sidewall tires	O	O	
All-season performance tires			O
Wire-style locking wheel covers	O	O	
(1) Includes power door locks and remote-control electric decklid with release in glove box. (2) Includes auto dim feature and automatic day/night mirror. (3) Includes speedometer/odometer, tachometer and gauges for voltage, oil pressure, temperature and fuel. A speed alarm can be set to alert you if you exceed your desired speed by 5 mph. Also includes a trip computer with displays for average fuel economy, instantaneous fuel economy, trip distance, fuel remaining and distance to empty. (4) Includes front reading light, instrument panel courtesy light and engine compartment light (all standard with LX and Super Coupe), and dual illuminated visor vanity mirrors (standard on LX). (5) Includes adaptive oil change indicator, low fuel light, low oil level light, low radiator coolant light and low washer fluid light.			

MEASUREMENTS	
Wheelbase	113.0"
Length	198.7"
Height	52.7"
Width	72.7"
Front tread	61.6"
Rear tread	60.2"
Luggage capacity (cu. ft.)	14.7
Passenger capacity	5
Based on Motor Vehicle Manufacturers Association passenger car specifications.	

MAJOR STANDARD FEATURES	
Bodyside protection moldings with bright insert	
Deluxe wheel covers	
Front automatic shoulder belt restraint system with manual lap belt	
Full-length console with floor-mounted shift	
Vinyl door trim with storage bins	
Cloth bucket seats with recliners	
Dome, luggage compartment, ashtray and driver's footwell lights	
Air conditioning	
Tinted glass	
Analog instrumentation	
Electronic AM/FM stereo search radio with digital clock (may be deleted for credit)	
Power steering	
All-season radial tires	
Power windows	
Interval windshield wipers	
LX (over standard)	
Styled road wheel covers	
Dual electric remote-control mirrors	
Luxury-level door trim and carpeting	
Power lock group (1)	
Analog performance instrumentation with tachometer	
Illuminated entry system and convenience lights	
Illuminated visor mirrors	
Rear seat courtesy lights	
Luxury cloth/leather/vinyl bucket seats with recliners and 6-way power for the driver	
Rear seat center armrest	
Leather-wrapped luxury steering wheel	
Electronic AM/FM stereo search radio with cassette and digital clock	
Speed control/tilt steering wheel	
Speed-sensitive power steering	
Super Coupe (over standard)	
Fog lamps	
Narrow bodyside moldings and lower bodyside cladding	
16-inch cast aluminum wheels and P225/60 performance tires	
Dual electric remote-control mirrors	
Luxury door trim and carpeting	
Articulated sport seats with power lumbar and power seat back bolster adjustments	
Sport soft-feel steering wheel	
Heavy-duty alternator	
Automatic ride control adjustable suspension	
Heavy-duty battery	
Analog performance instrumentation with tachometer	
Speed-sensitive power steering	
5-speed manual overdrive transmission	

6-YEAR/100,000-MILE CORROSION PROTECTION

Thunderbird's corrosion warranty coverage for outer body panel rust-through is 6 years or 100,000 miles, whichever comes first. See your Ford Dealer for a copy of this limited warranty.



Participating Ford Dealers offer the Lifetime Service Guarantee, which guarantees their customer-paid work on your Ford vehicle for as long as you own it. A covered repair is paid for once. If it ever has to be fixed again, the repairing dealer will fix it free. Ask to see the Lifetime Service Guarantee when you visit your participating Ford Dealer.

Genuine Ford and Motorcraft original equipment replacement parts meet the same high standards as those installed in production.

OPTIONS AVAILABILITY

Options shown or described in this catalog are available at extra cost and may be offered only in combination with other options or subject to additional ordering requirements or limitations.



The leasing alternative is available to qualified lessees through your participating Ford Dealer, who can arrange a Red Carpet Lease[®] tailored to your circumstances through Ford Credit. A wide variety of financing plans are also available.

PRODUCT CHANGES

Ford Division reserves the right to change product specifications at any time without incurring obligations.

"ASK YOUR FORD DEALER"

Following publication of this catalog, certain changes in standard equipment, options, prices and the like, or product delays, may have occurred which would not be included in these pages. Your Ford Dealer is your best source for up-to-date information.

