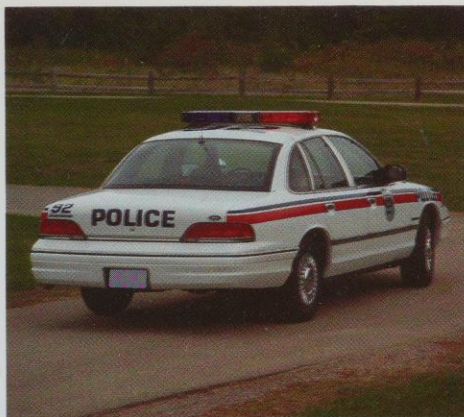
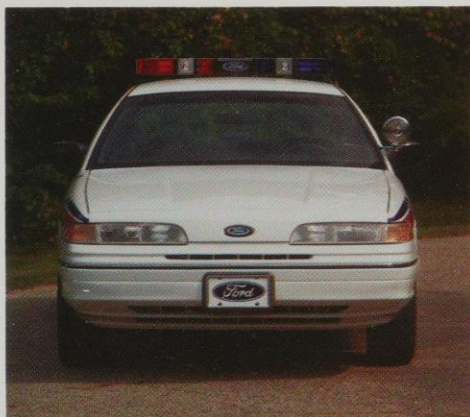
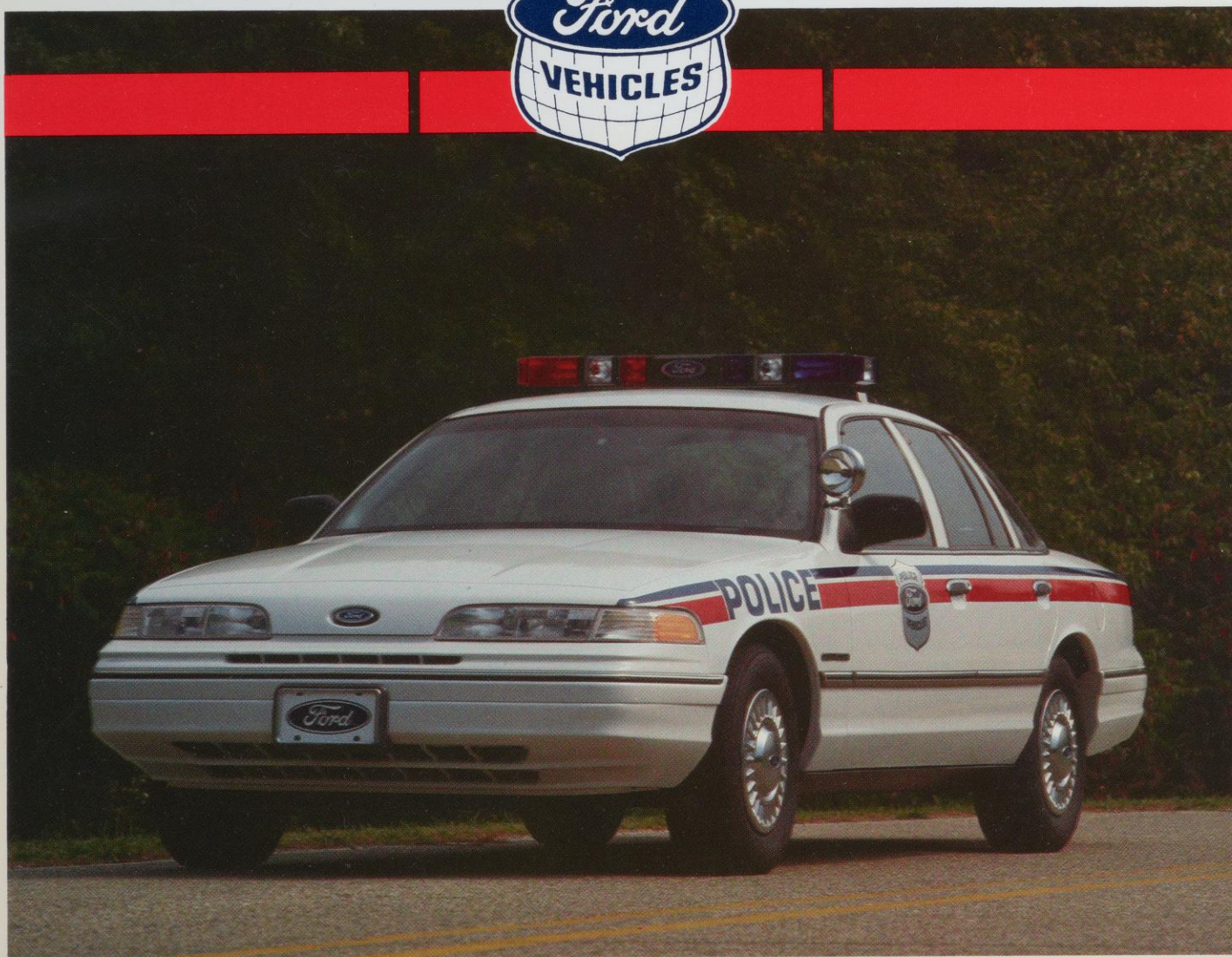


1992



## 1992 CROWN VICTORIA POLICE PACKAGE





# 1992 CROWN VICTORIA POLICE PACKAGE



The Crown Victoria Police Package has long been a favorite among law enforcement agencies that want a rugged, full-size police vehicle. The Crown Victoria is redesigned for 1992. Crown Victoria retains all of its traditional big car qualities – 6-passenger room, large trunk, body-on-frame construction, rear-wheel drive and V-8 power – while adding contemporary aerodynamic styling and advanced vehicle dynamics. Major new standard features include a smooth-running 4.6L overhead cam V-8 engine, offering improved power; speed sensitive steering; four-wheel disc brakes, and a new suspension offering greatly improved handling and roll control.

## STANDARD SERIES EQUIPMENT (P73)

- AIR BAG SUPPLEMENTAL RESTRAINT SYSTEM – Driver
- AIR CONDITIONING – Manual with positive shut off registers
- ASHTRAYS in rear above armrests
- CARPETING – 16 oz. color-keyed floor
- CHILD SAFETY LATCHES ON REAR DOORS
- CIGAR LIGHTER – In instrument panel center stack
- CLOCK – Electronic digital
- COOLANT RECOVERY SYSTEM
- DECKLID LATCH – Theft-resistant
- ENGINE – 4.6L overhead cam, SEFI V8
- FUEL FILLER CAP – Tethered
- FUEL TANK – 20 gal.
- FUSE PANEL – Easy-access, labeled
- GAUGE CLUSTER – Four (Volt, oil pressure, water temperature and fuel)
- GLASS – Tinted
- GLOVE BOX – Illuminated, lockable
- HEADLAMPS – Automatic with on/off delay
- HOOD ASSISTS – Gas cylinder
- HORN – Dual note
- IGNITION SYSTEM – Distributor-less
- JACK – Scissors
- LIGHTS – Dome, luggage compartment, front ashtray
- MAP POCKETS – Integral front door
- MIRROR – Day/night inside rearview
- MIRRORS – Color-keyed dual remote control power
- PARKING BRAKE RELEASE – Automatic with manual emergency override
- POWER STEERING – Speed-sensitive, variable-assist
- RADIO – Electronic AM/FM stereo
- RADIO SPEAKERS – Door mounted, located above armrests (two additional radio speakers mounted in package tray)
- SEATS – Split bench with center fold-down armrests trimmed in cloth
- SEAT BACK RECLINERS – Driver/passenger

- SEAT BELTS – 3-point active for front and rear outboard occupants (comfort adjustment on front seat shoulder belt)
- TILT STEERING COLUMN – Stalk controls for washer/wiper, hi/low headlamp beam, turn signal, and flash-to-pass
- TRANSMISSION – Electronic 4-speed overdrive (Feb. 1992 avail.)
- TRIP ODOMETER
- VISCOUS FAN
- VOLTAGE REGULATOR – Electronic
- WHEEL COVERS – Deluxe
- WINDOWS – Power
- WINDSHIELD WASHERS – Dual-jet fluidic
- WINDSHIELD WIPERS – Interval

## PRODUCT CONTENT DIFFERENCES OF COMMERCIAL PACKAGE (P72) VERSUS STANDARD SERIES

### Deletions from Standard Series

- Instrument panel sound insulator
- Instrument panel courtesy lights
- Rear seat center armrest
- Front door trim/instrument panel courtesy lamps
- Hood sound absorber
- Radio delete – AM/FM stereo and antenna (speakers and wiring not deleted)

### Revisions to Standard Series Content

- RH visor with illuminated mirror replaced by visor without mirror
- Driver/passenger manual recliners replaced by non-reclining seats except when ordered with power driver's seat
- Standard-duty seats replaced by heavy-duty
- Steel wheels replaced by heavy-duty – 15"x6.5" steel wheels
- Deluxe wheel covers replaced by hub caps
- Blacked-out "B"- and "C"-pillars replaced by body-color
- Vinyl seat trim replaces cloth seat trim





## POLICE EQUIPMENT GROUP (55H)

- Accessory feed wires, consisting of:
  - one ignition feed with (3) connectors and 30 amp. fuse
  - one direct feed with (3) connectors and 40 amp. fuse
- Air dam—lower radiator
- Alternator, 130-amp
- Axle ratio, rear 3.27:1
- Battery: 84 amp./hr. (850 CCA) with heat shield
- Bodyside molding delete, front doors
- Brakes, police level with metal front dust shields
- Cooling Package: police level with plastic 8-blade fan
- Decklid release, remote on left door trim panel
- Driveshaft and U-joints—heavy-duty
- Engine, 4.6L with police pursuit calibration
- Exhaust system—dual
- Frame and frame mounts, heavy-duty
- Headliner, non-structural (replaces structural headliner) with (2) added roof reinforcements
- Lamp, dual beam map
- Light, engine compartment
- Lock system single key—all vehicles with different key codes
- Power steering oil cooler, external—front-mounted
- Speedometer, electronic—0-140 MPH, certified calibration in 2 MPH increments
- Suspension police—includes heavy-duty front and rear springs, shock absorbers, and stabilizer bars
- Tires—P225/70HR15 BSW all-season speed-rated with conventional spare
- Transmission (AODE) with police calibration
- Transmission oil cooler, external—front-mounted

## RPO (Regular Production Options)

|  | Option Code |
|--|-------------|
| • Air bag supplemental restraint system, passenger-side .... | 59L         |
| • Anti-lock braking system/electronic traction assist .....  | 553         |
| • Cornering lamps, front .....                               | 51Q         |
| • Floor mats, front color-keyed carpet.....                  | 12H         |
| • Floor mats, rear color-keyed carpet.....                   | 12Q         |
| • Heater, engine block immersion .....                       | 41H         |
| • Radio, electronic AM/FM stereo.....                        | 58F         |
| • Radio, electronic AM/FM stereo/cassette.....               | 58H         |
| • Seat, 6-way power driver's .....                           | 21A         |
| • Seat trim, cloth .....                                     | *           |

\* Contact Dealer for Order Code



## LPO (Limited Production Options)

|   | Option Code |
|---|-------------|
| • Differential, limited slip (Traction-Lok) .....                         | 45D         |
| • Floor mats, heavy-duty black rubber (replaces standard carpeting) ..... | 127         |
| • Seats, front reclining—not heavy-duty .....                             | *           |
| • Seat trim, cloth front/vinyl rear .....                                 | 88L         |
| • Wheel covers, steel—full .....  | 641         |

\* Contact Dealer for Order Code

## DSO Options

- Hose clamps, aircraft-type, radiator and heater
- Hoses, silicone with special hose clamps
- Light switches, inoperative door courtesy
- Lock system, single key (all vehicles key-coded alike)
- Map light, header-mounted (32 C. P.)
- Noise Suppression Package (RFI), police radio
- Roof reinforcement for police roof-mounted signal equipment (extra bow with center plate to header)
- Seats, 40/40 (bucket) reclining, power driver, manual passenger
- Speedometer, 85 mph cluster
- Spotlight (left and/or right), pillar-mounted with 6" clear halogen bulb
- Spotlight Prep Package (left and/or right)
- Tires, P225/70R15 100H BSW all-season—General brand
- VASCAR speedometer cable
- Wiring Prep Package
  - Consists of:
    - Front wiring package
    - Rear wiring package
    - Roof wiring (10 wires, each color coded differently)



## POWERTRAIN FEATURES

|   |  |
|---|--|
| <b>Engine</b><br><b>4.6L V-8</b><br><b>SOHC</b> | <ul style="list-style-type: none"> <li>• Sequential multi-port electronic fuel injection</li> <li>• EEC-IV Electronic Engine Controls</li> <li>• Hydraulic timing chain tensioner</li> <li>• Interchangeable aluminum cylinder heads</li> <li>• Roller cam followers</li> <li>• Cross bolted main bearing caps</li> <li>• Cast in block accessory mounting brackets</li> </ul> |
|---|--|

|                                     |   |
|-------------------------------------|---|
| <b>Transmission</b><br><b>AOD-E</b> | <ul style="list-style-type: none"> <li>• 4-speed automatic</li> <li>• Electronic shift control</li> <li>• 4th gear overdrive</li> <li>• 4th gear lockup (in overdrive selector position)</li> </ul> |
|-------------------------------------|---|

## CHASSIS

|                        |   |
|------------------------|---|
| Type of construction   | Body-on-frame-perimeter   |
| Front suspension, type | Independent S.L.A. coil-spring design with ball joints and front stabilizer bar |
| Springs                | Coil  |
| Shock absorbers        | Direct, double-acting, nitrogen gas-pressurized, hydraulic, vertical mount      |
| Steering type          | Speed-sensitive, variable-assist, parallelogram, front steer, with center link  |
| Gear type              | Recirculating ball and nut  |
| Overall ratio          | 16.4:1  |
| Rear suspension, type  | Four-bar link with stabilizer bar   |
| Shock absorbers        | Direct, double-acting, nitrogen gas-pressurized, hydraulic, angle mount         |

## BRAKES

|                        |                                       |
|------------------------|---------------------------------------|
| Type                   | Dual hydraulic, power four-wheel disc |
| Front disc diameter    | 11.1"                                 |
| Rear disc diameter     | 11.4"                                 |
| Total brake swept area | 421.9 sq. in.                         |

## HORSEPOWER/TORQUE RATINGS

| ENGINE DISPL.  | NOMINAL COMPRESSION RATIO | HORSEPOWER | TORQUE       |
|----------------|---------------------------|------------|--------------|
|                |                           | H.P. @ RPM | FT.LB. @ RPM |
| 4.6L (281 CID) | 9.0:1                     | 210 @ 4600 | 270 @ 3400   |

**Contact Your Ford Dealer for More Information—Including Scheduled Maintenance and the Optional Fleet Extended Service Plan**

## KEY PRODUCT SPECIFICATIONS

### DIMENSIONS AND CAPACITIES

(Dimensions in inches unless otherwise specified)

| Model                         | 4-Door Sedan |
|-------------------------------|--------------|
| <b>General</b>                |              |
| Wheelbase                     | 114.4        |
| Overall Length                | 212.4        |
| Overall Height                | 56.7         |
| Overall Width                 | 77.8         |
| Tread – Front                 | 62.8         |
| – Rear                        | 63.3         |
| Base Model Curb Weight (lbs.) | 3748         |

### Front Seat Room

|                    |      |
|--------------------|------|
| Head Room          | 39.4 |
| Shoulder Room      | 60.5 |
| Hip Room           | 59.1 |
| Leg Room – Maximum | 42.5 |

### Rear Seat Room

|                    |      |
|--------------------|------|
| Head Room          | 38.0 |
| Shoulder Room      | 60.2 |
| Hip Room           | 59.9 |
| Leg Room – Minimum | 39.7 |

### Luggage Compartment

|                                      |       |
|--------------------------------------|-------|
| Luggage Capacity (cu. ft.)           | 20.6  |
| Liftover Height                      | 27.2  |
| EPA Passenger Volume Index (cu. ft.) | 111.3 |
| Fuel Tank Capacity (gals.)           | 20.0  |

## AERODYNAMICS

|                     |      |
|---------------------|------|
| Coefficient of Drag | 0.34 |
|---------------------|------|

**Law Enforcement agency service places strong demands on an automobile, making vehicle quality especially important.**

**For 11 consecutive years, Ford Motor Company has designed and built the highest quality American cars and trucks, based on an average of owner-reported problems in a series of surveys of all '81-'91 Ford and competitive models designed and built in North America.**



Ford Division  
General Fleet Office

Illustrations and information presented herein were correct when approved for printing. Ford Division reserves the right to discontinue or change at any time, specifications or designs without incurring obligations. Vehicles shown with optional factory-and customer-installed equipment. Some options are required in combination with other options. Always consult your Ford Dealer for the latest most complete information on models, features prices and availability.