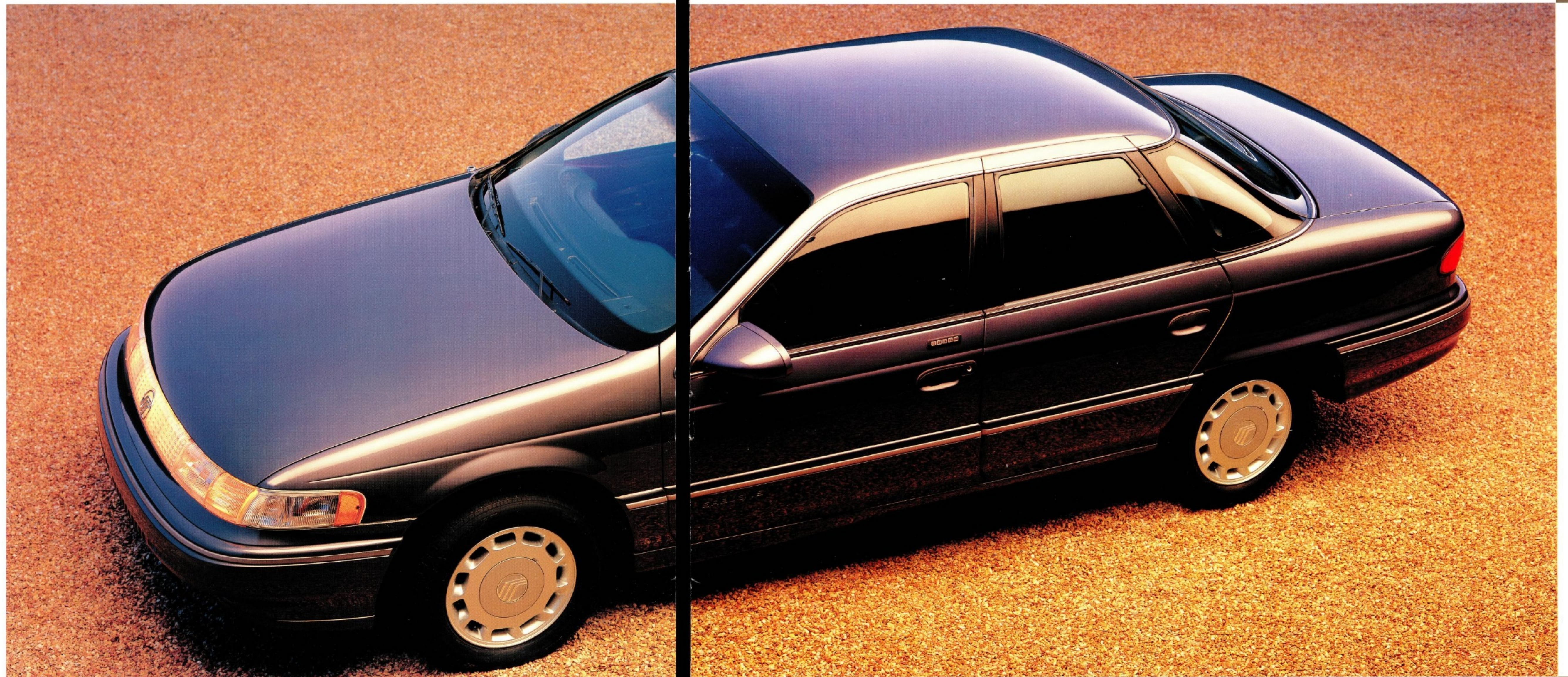


19



92

*Sable LS pictured
in Opal Grey
Clearcoat Metallic.
Some features shown
may be optional.*



Remember the first time you ever saw a Mercury Sable?

You'd heard about it. Maybe even read about it in one of the car magazines. Then one day you're cruising along in traffic and suddenly there it was. Unmistakably.

And maybe your pulse did a little dance.

"...so slick...you could take a microscope to the Sable's surface and see those oxygen molecules tumbling right off, ..." one car expert wrote. And you would have agreed a hundred percent.

Lots of people went on to discover that Sable drove as good as it looked and bought one.

Lots of people who wouldn't consider themselves leading-edge types bought a leading-edge car.

Because it was right.

Now we're making advancements and refinements to make it even more right. To make it even more lavish in its luxuries. Even more generous in its comforts.

Because we want Sable to keep its leading edge. And we want to make your pulse dance.



Sable GS pictured in Regatta Blue Clearcoat Metallic with optional cast aluminum wheels.



For all the effort that went into making Sable beautiful, equal time and resources have been dedicated to making this beauty last.

Which is why under its surface Sable is endowed with protection against rust, corrosion,*

and even the occasional careless parking lot attendant.

Rust-inhibiting two-sided galvanized steel is used on all exterior panels except the roof. The steel roof is galvanized on its internal surface to guard against corrosion

The new Sable has been refined in a number of ways, most of which you can't see.

But maybe, after a long day's work, your drive home will somehow feel a little shorter.

Or perhaps that two-day trip to a favorite

vacation spot will seem more relaxed for you and less tiring for the family than you ever remembered it.

No, you don't have to see many of Sable's refinements to appreciate them.

You simply must drive

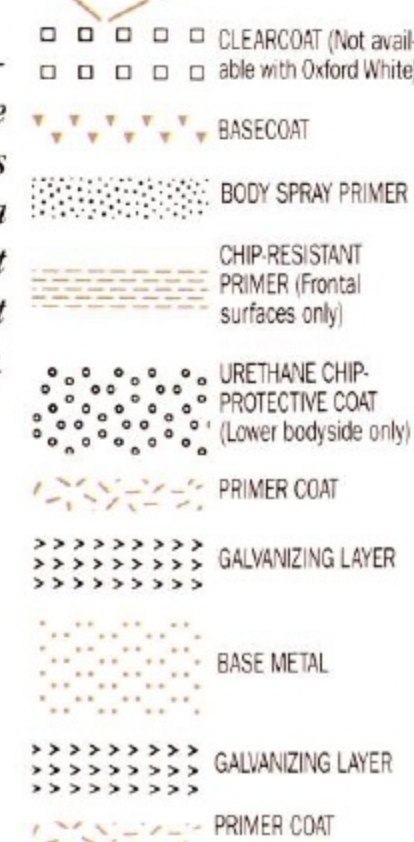
a Sable. And then you'll know.

Of course, we've also made some improvements you can see.

For example, it's hard to imagine that we could make Sable even more pleasing to the eye. Yet we did.

Which means that while the new Sable offers plenty of improvements that you'll enjoy only while driving it, we've even included a few that you can admire when it's parked.

A lower body-side urethane primer helps absorb a pebble's impact to resist chipping.



caused by high humidity. To help keep your new Sable looking new, protective shields against paint chipping are applied as part of our meticulous 23-step painting process. Key areas where stones and pebbles typically do their damage are treated with a

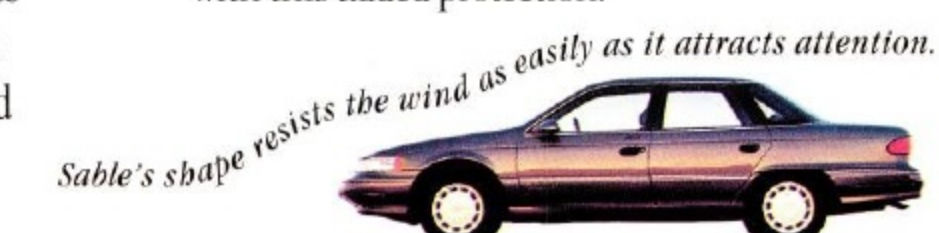


special chip-resistant urethane coating. The primer coat covering Sable's entire outer shell also contains protective properties.

You'll also appreciate the fact that Sable's front and rear bumpers exceed federal requirements

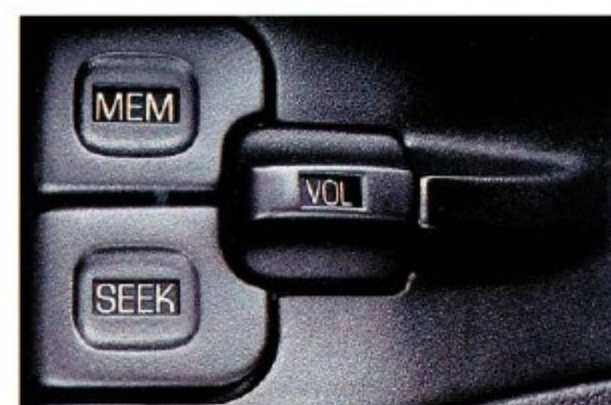


for impact resistance by 100 percent. Apparently insurance companies appreciate this too—many offer discounts on premiums for cars fitted with this added protection.





Standard cup holders pop out at a touch to provide a convenient, secure place for your favorite beverage.



New remote radio controls allow the driver to adjust volume and operate memory or seek without losing sight of the road.



The electronic automatic climate control system (optional on LS) gradually increases airflow to eliminate an initial blast of air.



Sable's rear seat heat ducts offer passengers in the back a generous flow of direct warmth.



Rear-mounted speaker grilles and rear head restraints have been redesigned to increase the driver's rear visibility.



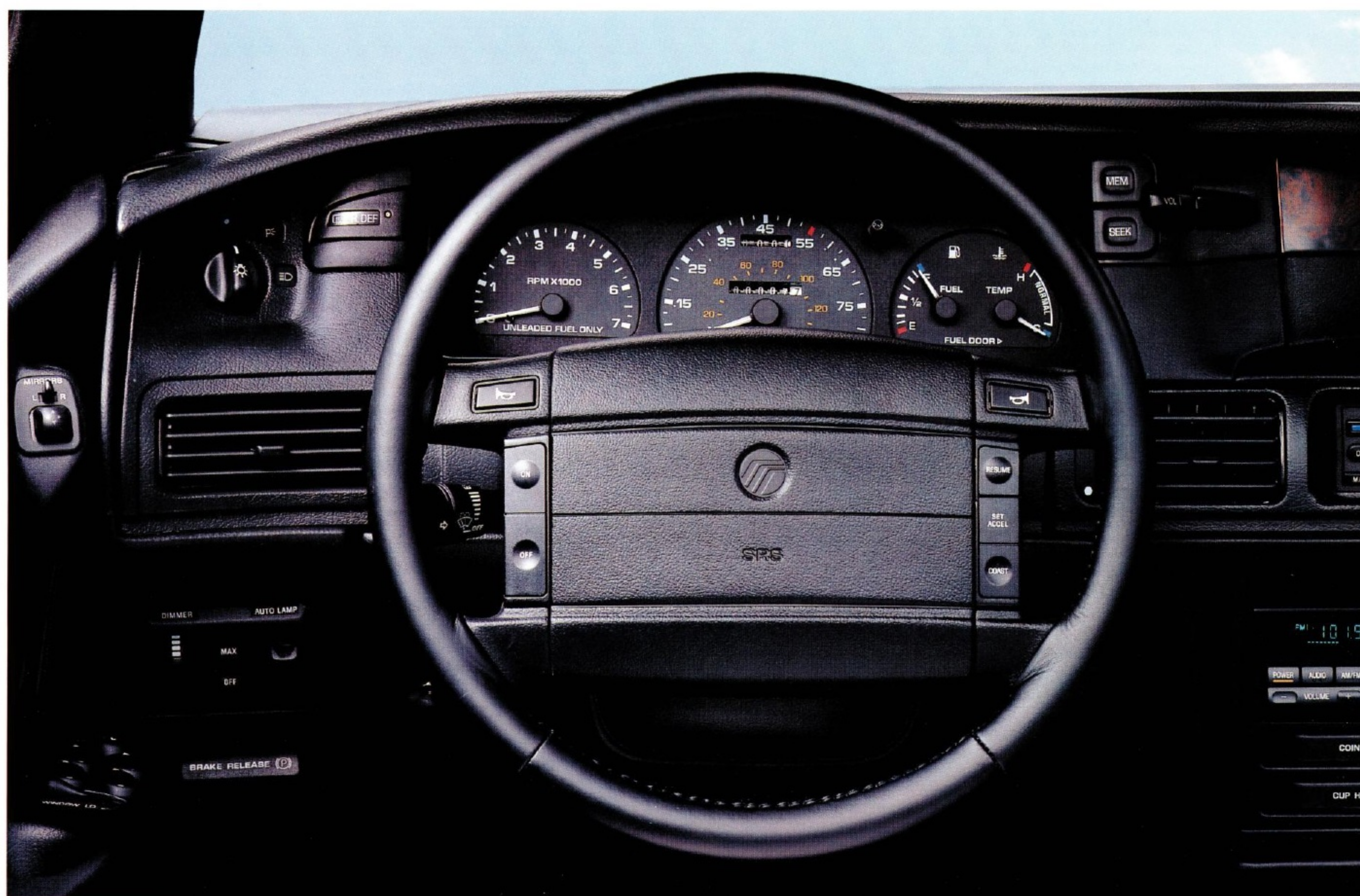
Sable's standard tilt steering column tips up for easier ingress and egress, and is adjustable to your favorite position.



New door-mounted controls for power windows (standard on LS, optional on GS) are illuminated and positioned to make them easy to locate.



The electronic instrument cluster (optional on LS) provides digital readout of speed, rpm and distance.



Sable LS interior pictured with optional Ebony leather seating surfaces and standard bucket seats with center console and floor shift. Other equipment shown may be optional.

Maybe you've had a tough day at work. Maybe you've had a tough week.

So you settle back in a seat so comfortable you'd swear it was molded just for you. A number of pleasing choices present themselves. Maybe you'll play some music the way it was meant to be heard, with incredible clarity and just the right amount of bass. Or maybe you'll just cool yourself down with a little air conditioning.

Now take the wheel and ease out into traffic. As the miles begin to roll smoothly past, notice how much better you're starting to feel.

There are times when you must face stressful situations. This isn't one of them. You're in your Sable now. And you're totally in control of the situation.

Drivers are our favorite people. Which is why Sable's all-new instrumentation and controls are carefully designed around the way a driver drives.

The configuration, the placement, the size and the operation of instrumentation and controls are all considerations that help you feel relaxed and in control behind the wheel. Tactile switches are easy to reach and remarkably simple to operate. And as you can see in the picture above, the instrumentation is highly visible and clearly communicative. Even the color of the instrumentation illumination has been changed to make it easier to see.

Sable's many available sound systems include

larger, more accessible controls and new, more visible graphics. Convenient new standard remote controls near the top of the instrument panel allow the driver to operate radio or cassette volume, select preset stations or engage seek without taking their eyes off the road. (For more on all the Sable sound system offerings, please consult the features and options pages in the back of this brochure.)

Drivers and passengers alike will appreciate the room and comfort of Sable's interior. Choose either a front twin comfort seating configuration, or front bucket seats and center console with floor shift. Either is available at no additional cost.

The liftgate includes a flip-up window for ready access to the rear cargo area without raising the entire liftgate.



You'll find added storage room for smaller items in this hidden rear compartment.



Sable Wagon turns into a picnic with this optional picnic tray.



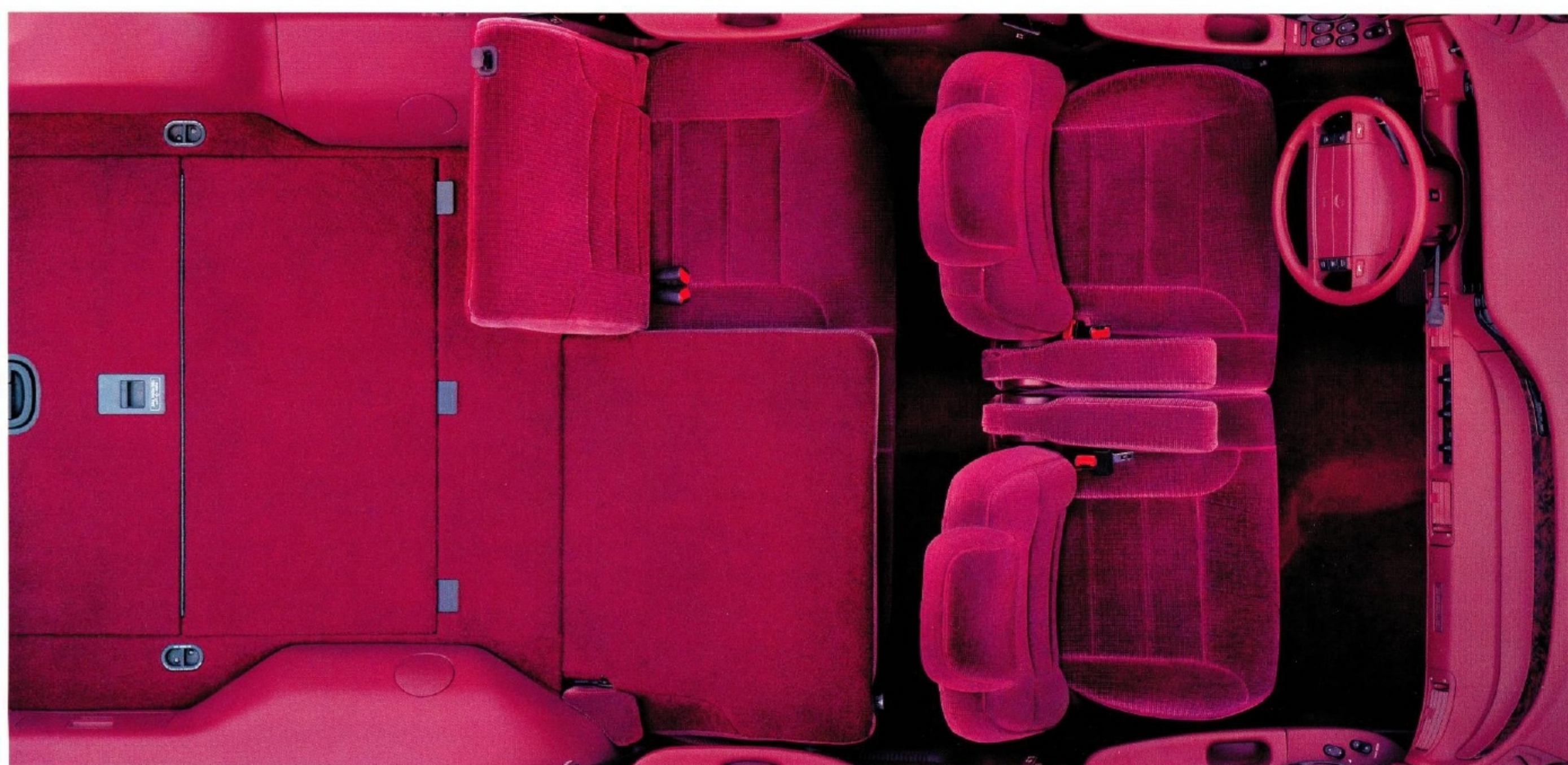
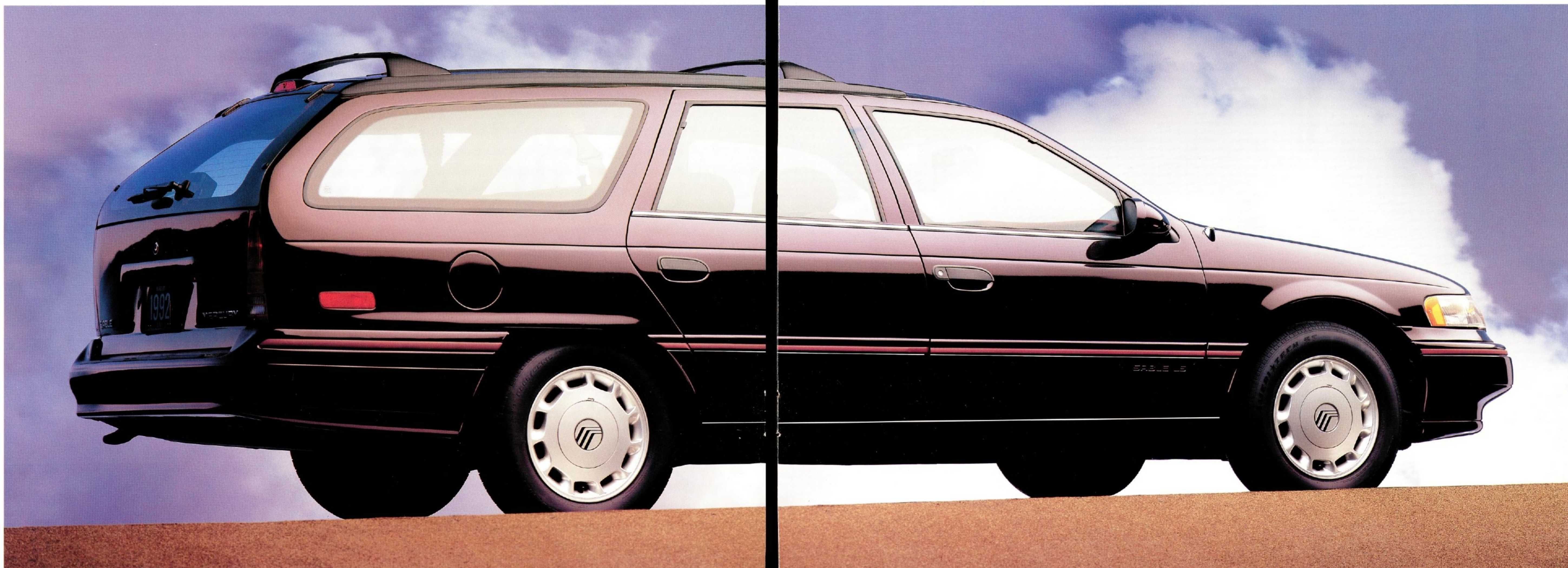
An optional rear-facing third seat adds room for two additional passengers.



Remote controls that open the liftgate and fuel-filler door are standard on Sable LS Wagon.



Sable LS Wagon pictured in Dark Cranberry Clearcoat Metallic. Some features shown may be optional.



Sable Wagon's 60/40 split-fold rear seat increases your flexibility to carry both passengers and cargo. The Sable LS Wagon interior is pictured here in Cranberry cloth. Some features shown may be optional.



Your parents may have had a wagon when you were growing up. And while it could haul the whole family on long vacations, by the time you got your license you couldn't muster much enthusiasm about borrowing the family car on Saturday night.

Then you saw your first Sable Wagon. And you knew you could never view wagons quite the same way again.

Here is a car that works like a wagon, yet rides and handles like

a Sable Sedan.

And Sable Wagon is so downright good-looking, even teenagers are proud to drive it. Which, if you have a teenager, may be the only disadvantage to owning one.



Sable Wagon not only offers a spacious 81 cubic feet of cargo capacity with the rear seat folded down, it also offers an independent short- and long-arm rear suspension specifically designed for the yeoman tasks a wagon performs.

Yet Sable Wagon is much more than an able workhorse. Its interior is roomy and comfortable, just like you'll find in Sable Sedan. It also includes speed-sensitive variable-assist power steering, just like Sable Sedan.

Its front suspension, steering and body rigidity have been finessed to deliver a quieter interior and excellent road manners, just like Sable Sedan. And it is constructed with corrosion-fighting two-sided galvanized steel on all exterior panels except the roof, just like Sable Sedan.

In fact, the most distinguishing difference between Sable Sedan and Sable Wagon is the extra cargo room in back.

Which is precisely what a wagon should have.

Engineers have long dreamed of designing a car that could deliver a boulevard-smooth ride and still hold the road on a tight S-curve. Yet, typically, they couldn't achieve one without compromising the other.

Fortunately, the engineers who created the new Sable refused to make compromises. Instead, they made an extraordinary front-wheel-drive sedan even better.

For 1992 they gave Sable a smoother, quieter ride that's still firm and reassuring in the corners.

They included speed-sensitive variable-assist power steering, a sophisticated system that provides a high level of power assist for a low-speed parking maneuver and a lower level of assist for a feel of the road at highway speeds.

But they didn't stop there. They also rethought, recalibrated and retested Sable's chassis, suspension and powertrain to create an even smoother, quieter automobile.

If you're interested in some of the ways Sable's engineers accomplished these tasks, we encourage you to thoroughly read the contents of these pages.

Or if you're simply interested in enjoying the benefits of all this effort, we recommend test driving a new Sable at your first opportunity.

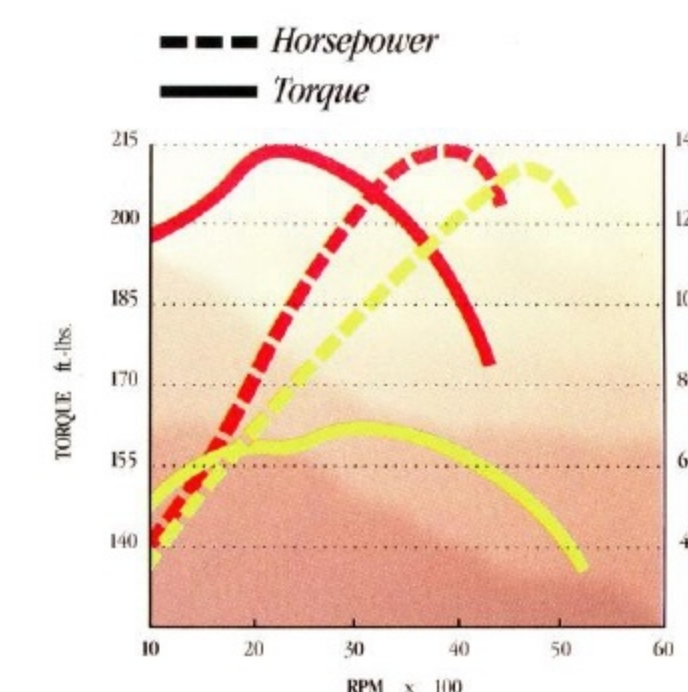
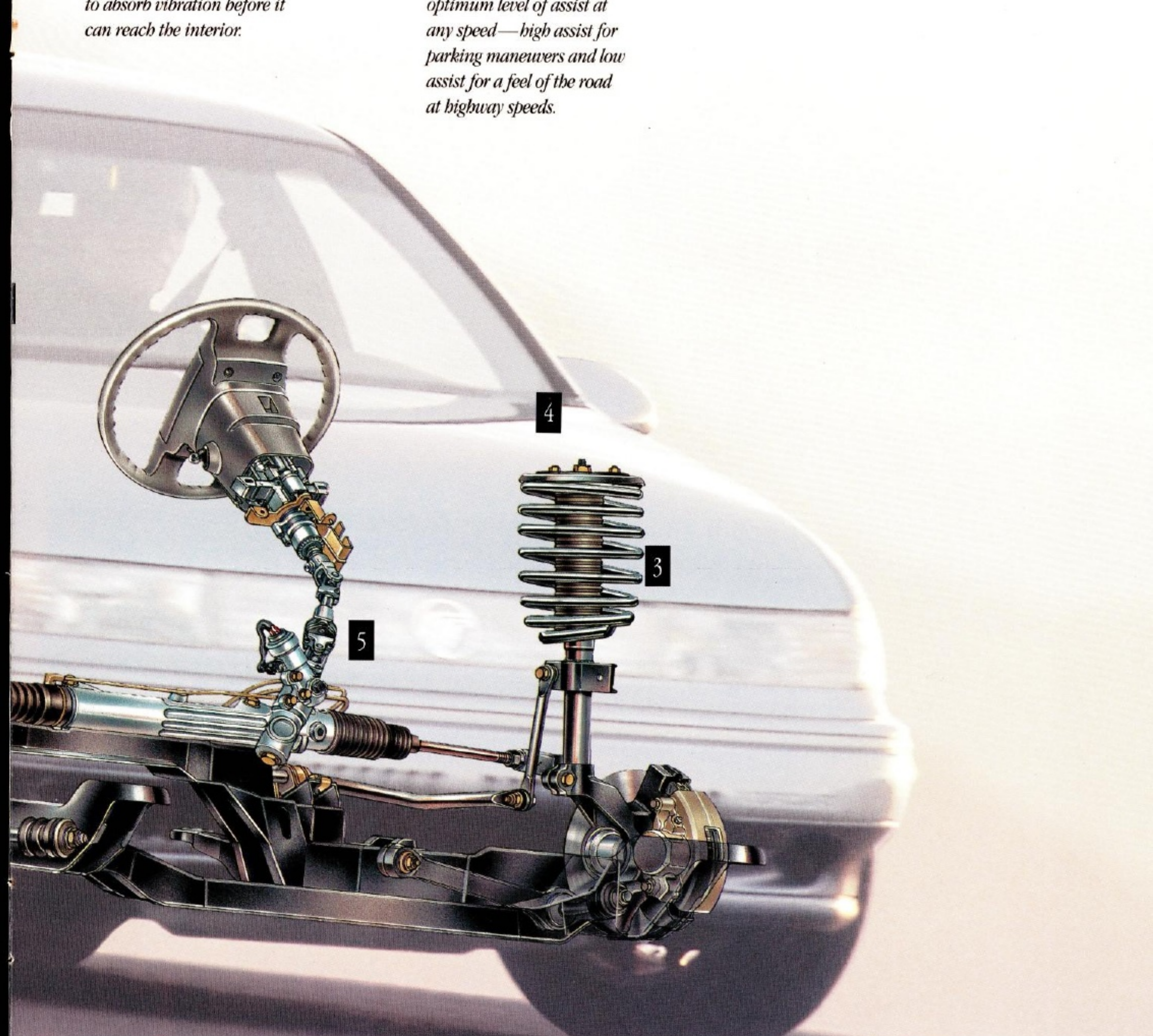
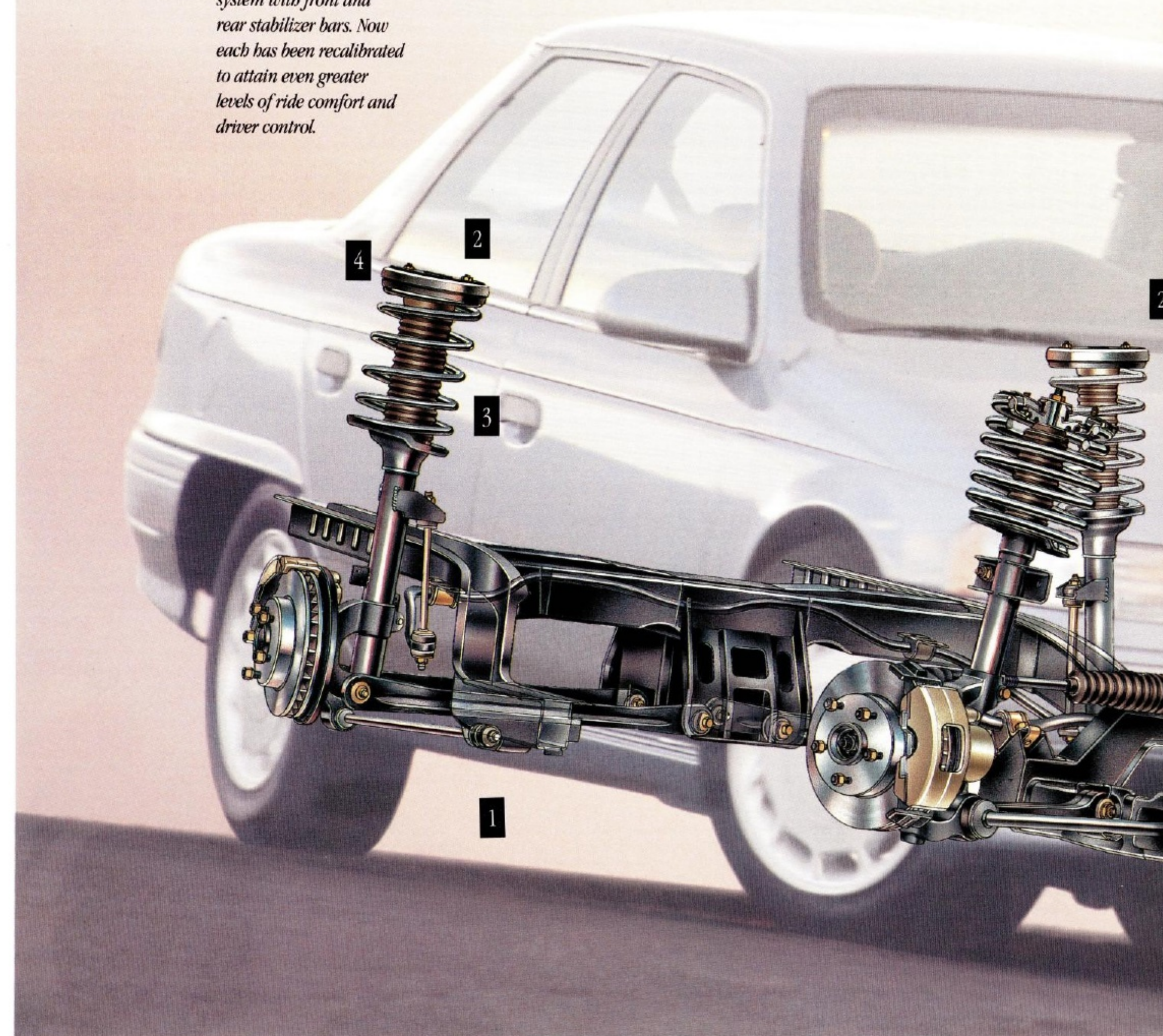
1. Sable's smooth yet controlled ride and handling characteristics may be attributed to its power rack-and-pinion steering and fully independent suspension system with front and rear stabilizer bars. Now each has been recalibrated to attain even greater levels of ride comfort and driver control.

2. To keep road noise out of the interior, particularly the back seat, tuned vibration absorbers have been added to Sable Sedan's independent rear suspension.

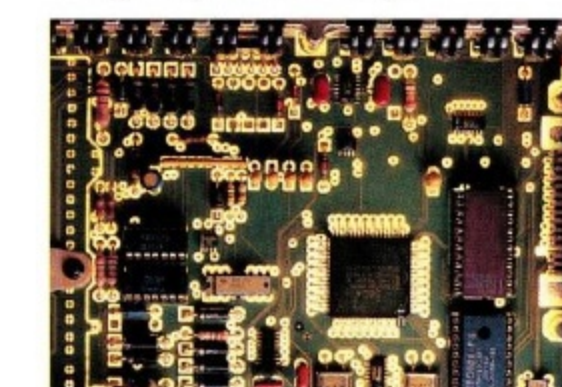
3. Sable's struts have been recalibrated to provide a plusher, quieter ride over a wide variety of road surfaces.

4. To help keep passengers from feeling the constant jiggling that a suspension sustains from the road, Sable's double isolated front and rear struts have been refined to absorb vibration before it can reach the interior.

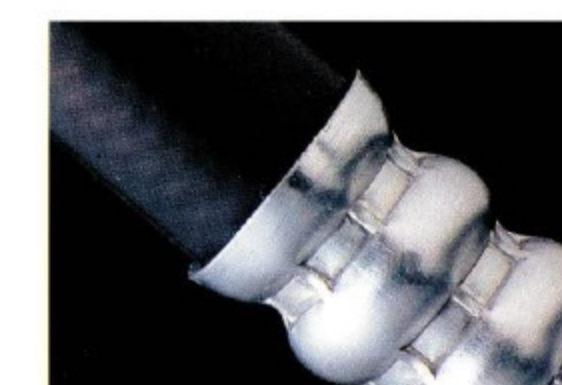
5. Speed-sensitive variable-assist power rack-and-pinion steering is now standard. It progressively decreases the level of assist as speed increases to provide the optimum level of assist at any speed—high assist for parking maneuvers and low assist for a feel of the road at highway speeds.



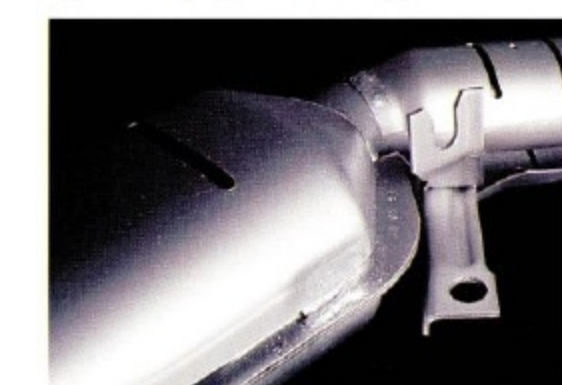
Sable's standard 3.0-liter V-6 engine delivers 135 hp at 4800 rpm and 165 ft.-lb. of torque at 3000 rpm. Or you can order the optional 3.8-liter V-6 engine which produces 140 hp at only 3800 rpm, with increased torque over the standard V-6 of 215 ft.-lb. at 2200 rpm.



Both V-6 engines are matched to a four-speed automatic transaxle which electronically controls shifting for optimal efficiency and smooth transitions between gears.



Protecting the environment is everybody's concern. Which is why the 1992 Sable includes new air conditioning boxes for protection against refrigerant leakage.



Sable's stainless steel exhaust system includes a specially designed exhaust pipe support that further isolates engine vibration from the passenger compartment.



Standard 15" steel-belted radial tires are specially designed for Sable to deliver a smoother, quieter ride without sacrificing responsive handling.

To build a better Sable, our engineers left no part unscrutinized.

They started with a strong foundation. Sable's unitized body and front subframe are a marvel of rigidity, with thousands of precision welds. And

A separate front sub-frame helps isolate engine



now this sturdy structure includes even greater reinforcements which help Sable ride even smoother than before without compromising its precise handling characteristics.

Sable's engineers also went to great lengths to

noise and vibration from the passenger compartment.

quiet interior sound levels by reducing even small areas of vibration and noise in the chassis, suspension, drivetrain and other systems.

And they added the friction reducing qualities of roller tappets to Sable's standard 3.0-liter V-6 engine, which also offers such sophisticated features as sequential multi-port

A new 42-way electrical connector consolidates



connections in the engine compartment.

electronic fuel injection and EEC-IV, an on-board computer that monitors more than 312,000 specific engine functions each second to maintain optimum performance.

Sable's engineers even added a number of improvements to Sable's electrical system,

including a new 42-way connector that efficiently organizes multiple wiring connections in the engine compartment, a new power distribution box which eliminates various fuse links for easier diagnostics, and a new, more powerful alternator for quieter performance.

Why would they make so many improvements in a car that was already good enough to be one of *Car and Driver's* Ten Best the past two years?

Because they're Sable engineers. And they're proud of it.

Engineers ferreted out and reduced even small sources of vibration.



New, larger backlights offer superb visibility when backing up.



Outside rearview mirrors are tinted to help reduce glare.



Child-proof door locks help keep curious small hands from unintentionally opening rear doors.



Lap/shoulder safety belts are provided for front and rear outboard passengers.



Even though you may drive the same familiar roads each day, the situation you're driving in can change in a heartbeat.

A cloudburst could erupt while you're miles away from the safe haven of home. You could come across an icy patch that wasn't there just yesterday. Some family's pet could run out into the street and across your path. And of course you must always watch out for other drivers.

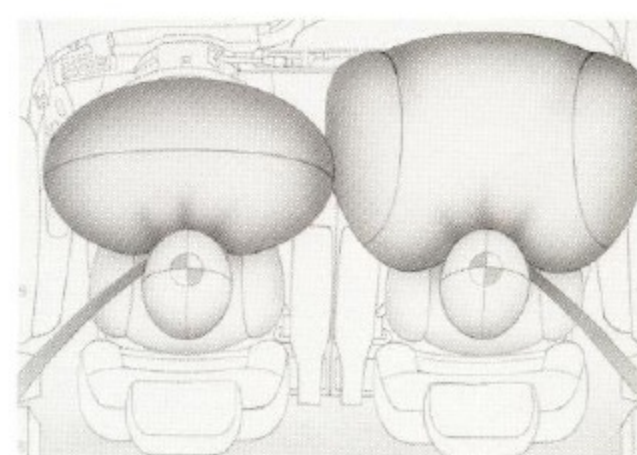
The point is, even though you may be a safe driver, you can never be too careful. You can, however, own a Sable.

Although no car can promise absolute safety, Sable's vast array of safety features assures that protecting you and your passengers has been given every consideration.

So while you can't be sure of everything on today's roads, you'll travel with peace of mind when you drive a Sable.



This artist's depiction demonstrates how Sable's standard driver and optional right front passenger air bags (SRS) inflate during a moderate to severe frontal collision. They inflate quicker than the blink of an eye, then quickly deflate once their vital task is complete. (Always wear your safety belts, even if your vehicle is equipped with air bags.)



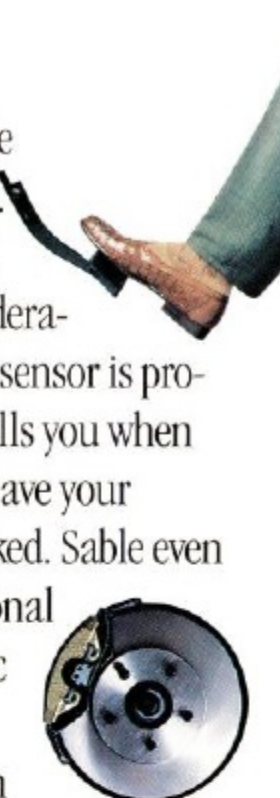
The more we test, the more we learn about safety. And the more we learn, the more we're able to incorporate into the cars we build.

For instance, Sable includes a driver-side air bag Supplemental Restraint System (SRS) as standard equipment. And now you have the

option of choosing this same advanced protection for the right front passenger.

For road-gripping stopping power, Sable is provided with a dual hydraulic front disc/rear drum braking system with power assist. And now this system is refined to offer even smoother, more

precise brake modulation. As an added safety consideration, a wear sensor is provided that tells you when it's time to have your brakes checked. Sable even has an optional 4-wheel disc anti-lock brake system



(ABS) for greater steering control while braking on ice, snow or rain-slick roads.

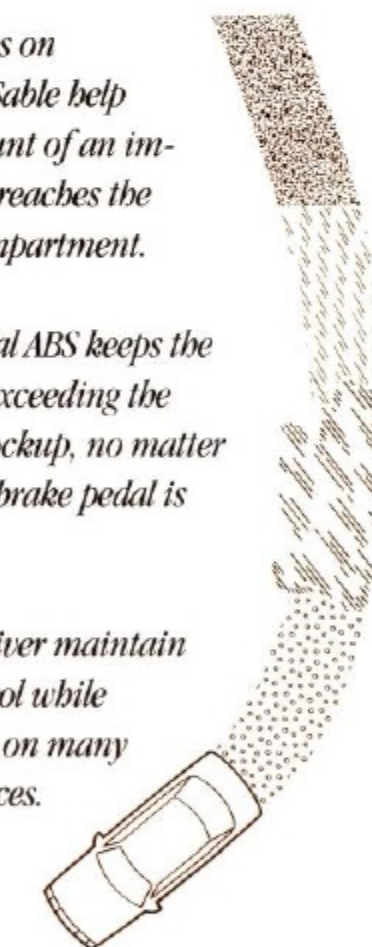
Should an accident prove unavoidable, Sable's very structure is designed to sacrifice itself to help protect passengers in a front or rear collision. Its unitized body includes crumple zones in the front and rear that help absorb an impact's energy before it reaches the passenger compartment. And Sable's roof and front pillars are built to withstand a force greater than the car's weight to help protect passengers in a rollover accident.



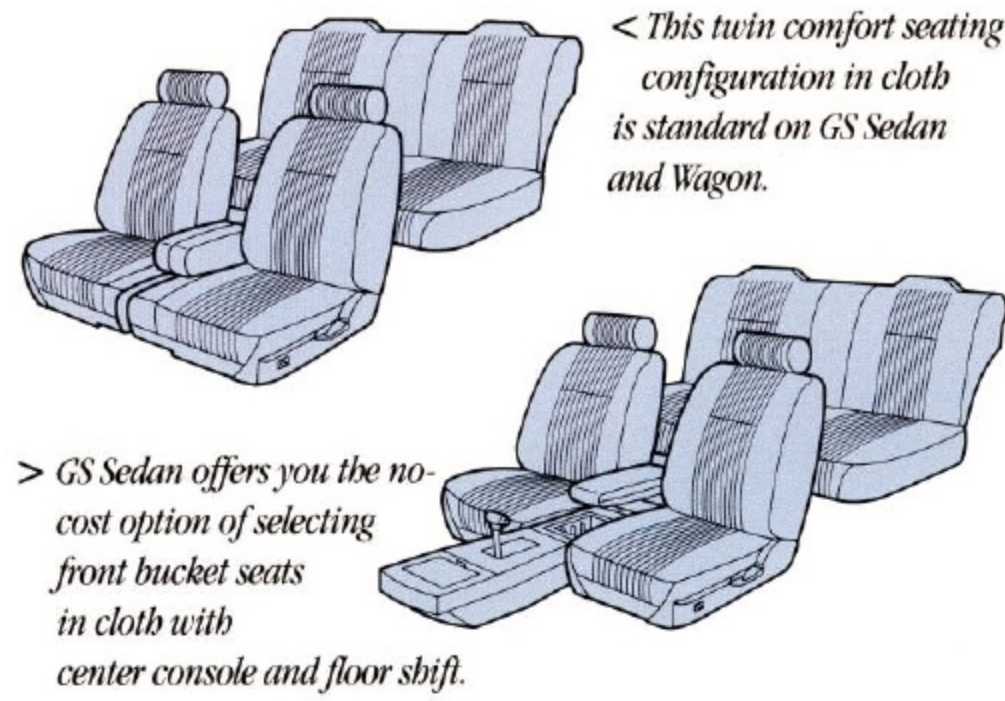
Crumple zones on either end of Sable help absorb the brunt of an impact before it reaches the passenger compartment.

Sable's optional ABS keeps the brakes from exceeding the threshold of lockup, no matter how hard the brake pedal is pressed.

It helps the driver maintain steering control while braking, even on many slippery surfaces.



GS Cloth



< This twin comfort seating configuration in cloth is standard on GS Sedan and Wagon.

> GS Sedan offers you the no-cost option of selecting front bucket seats in cloth with center console and floor shift.



LS Cloth



< LS Sedan and Wagon may be ordered with twin comfort seating in standard LS cloth or optional leather seating surfaces.

> Front bucket seats with center console and floor shift in cloth is standard on LS Sedan, and available with leather seating surfaces in either LS Sedan or Wagon.



Optional LS Leather Seating Surfaces



DIMENSIONS (in inches)		Wheelbase	Overall length	Overall width	Overall height	Track	Headroom	Legroom	Shoulder room	Hiproom
Sedan	106.0	192.2	71.2	54.4	front 61.6 / rear 60.5	front 38.3 / rear 37.7	front 41.7 / rear 37.1	front 57.5 / rear 57.5	front 54.8 / rear 55.6	
Wagon	106.0	193.3	71.2	55.1	front 61.6 / rear 59.9	front 38.6 / rear 38.1	front 41.7 / rear 36.7	front 57.5 / rear 57.5	front 54.8 / rear 57.0	
ENGINES		Type	Displacement	Horsepower (SAE net)	Torque (SAE net)	Fuel	Fuel delivery	Compression ratio	Engine control	
	3.0L V-6 60 degree OHV	3.0 liters	135 @ 4800 rpm	165 lb-ft @ 3000 rpm	16.0 gal., 18.4 gal. with optional extended-range tank	Sequential electronic multi-port fuel injection	9.3:1	EEC-IV, electronic engine control		
	3.8L V-6 90 degree OHV w/balance shaft	3.8 liters	140 @ 3800 rpm	215 lb-ft @ 2200 rpm			9.0:1			

CAPACITIES		Cargo volume (cu. ft.)	Oil	Engine coolant	Gurb weight	BRAKES	Front	Rear	Swept area	Type	STEERING
Sedan	17.2	4.5 qt. (w/filter)	10 qt. on 3.0L V-6, 12.1 qt. on 3.8L V-6	3,147 lbs.	Sedan	10-inch disc	8.9-inch drum	270.4 sq. in.	4-wheel hydraulic actuated with diagonal split	Speed-sensitive variable-assist power rack-and-pinion	
Wagon	45.7/81.1 (seatback down)	4.5 qt. (w/filter)		3,292 lbs.	Wagon	10-inch disc	9.8-inch drum	296.8 sq. in.			
TRANAXLE					SUSPENSION <i>Front</i> —Independent MacPherson nitrogen gas-pressurized struts with coil springs, tension struts, stabilizer bar and lower control arm. <i>Rear</i> —Sedan: Independent parallel four-bar arm design, nitrogen gas-pressurized struts, stabilizer bar and coil springs. Wagon: Independent short and long arm, nitrogen gas-pressurized shocks, stabilizer bar and variable-rate coil springs						
Electronically-controlled four-speed automatic overdrive with torque converter lock-up in third and fourth gears											

FUNCTIONAL FEATURES	GS SEDAN	GS WAGON	LS SEDAN	LS WAGON
Driver-side air bag Supplemental Restraint System	S	S	S	S
Passenger-side air bag Supplemental Restraint System	0	0	0	0
3-point lap/shoulder safety belts for front and rear outboard occupants	S	S	S	S
Speed-sensitive variable-assist power steering	S	S	S	S
Rear child-proof door locks	S	S	S	S
Brake shift interlock	S	S	S	S
Stainless steel extended-life exhaust system	S	S	S	S
Sound insulation package	S	S	S	S
Audible brake wear sensors	S	S	S	S
Tinted glass	S	S	S	S
Side window defoggers	S	S	S	S
Interval windshield wipers	S	S	S	S
Rear wiper/washer		0		0
Warning lights for washer fluid, headlamp or taillamp outage, low fuel, low oil, door ajar			S	S
Load floor tie-down hooks		S		S
Cargo net			S	S
Electric rear window defroster	0	0	0	0
4-wheel disc anti-lock braking system	0	0	0	0
Heavy-duty suspension	0	0	0	0
Heavy-duty battery	0	0	0	0
Extended-range fuel tank (18.4 gal.)	0	0	0	0

EXTERIOR FEATURES	GS SEDAN	GS WAGON	LS SEDAN	LS WAGON
Five-mph impact bumpers front/rear	S	S	S	S
Dual power mirrors	S	S	S	S
Aero halogen headlamps	S	S	S	S
Lower door and rocker panel protective urethane coating	S	S		
Lower bodyside color-keyed cladding/protection			S	S
Aerodynamically styled roof-rack		S		S
Keyless entry system			0	0
Car cover	A	A	A	A
Ski carrier	A	A	A	A
Front end cover	A	A	A	A

INTERIOR COMFORT AND CONVENIENCE FEATURES	GS SEDAN	GS WAGON	LS SEDAN	LS WAGON
Air conditioner	S	S	S	S
Air conditioner with electronic automatic temperature control			0	0
Coin and cup holder trays*	S	S	S	S
Light group: Includes dual-beam dome light (except with moonroof), engine compartment light, instrument panel courtesy light and headlamps-on chime	0	0	S	S
Twin comfort seats with dual recliners	S	S	0**	S
Individual bucket seats with floor shift and console	0**		S	0***
Front-seat power lumbar supports			S	S
Four-way front seat headrests			S	S
60/40 split fold-down rear seat		S		S
Six-way power driver's seat	0	0	0	0
Six-way power driver and passenger seats	0	0	0	0
Rear-facing third seat		0		0
Leather seating surfaces			0	0
Vinyl seating surfaces		0		
Automatic parking brake release			S	S

S Standard feature 0 Optional feature A Dealer-installed accessory

INTERIOR COMFORT AND CONVENIENCE FEATURES (continued)	GS SEDAN	GS WAGON	LS SEDAN	LS WAGON
Leather-wrapped steering wheel	0	0	0	0
Power moonroof			0	0
Rear cargo area cover		0		0
Digital clock	S	S	S	S
Tilt steering column	S	S	S	S
Fully trimmed luggage compartment with light	S	S	S	S
Front door map pockets	S	S	S	S
Dual visor mirrors	S	S		
Dual illuminated visor mirrors			S	S
Rear seat center fold-down armrest			S	
Integrated rear seat outboard head restraints	S		S	
Power windows	0	0	S	S
Fingertip speed control	0	0	0	0
Power lock group: Includes door locks (on GS and LS), fuel-filler door release and decklid/liftgate release† (on GS)	0	0	0	0
Front and rear floor mats	0	0	0	0
Picnic tray		0		
Autolamp on/off delay system			0	0
Remote anti-theft system	A	A	A	A
Cargo liner		A		A

SOUND SYSTEMS	GS SEDAN	GS WAGON	LS SEDAN	LS WAGON
Instrument panel mounted radio control (seek, memory presets and volume)	S	S	S	S
Electronic AM/FM stereo with four speakers (may delete for credit)	S	S	S	S
Electronic AM/FM stereo with cassette and four speakers	0	0	0	0
Premium Sound—power amplifier, 60 total watts RMS and upgraded speakers	0	0	0	0
High-Level electronic AM stereo/FM stereo cassette audio system with power amplifier, 80 total watts RMS and total of four speakers	0	0	0	0
Ford JBL Audio System—four-channel equalized and one subwoofer amplifier with 145 total watts RMS and upgraded speakers (total of seven)	0		0	
Digital compact disc player with music search, scan and shuffle features (requires High-Level or JBL audio system, replaces coin/cup holder tray)	0	0	0	0
Automatic power antenna	0	0	0	0
Trunk-mounted 10-CD compact disc changer with remote control (requires High-Level audio system or Ford JBL audio system)	A		A	

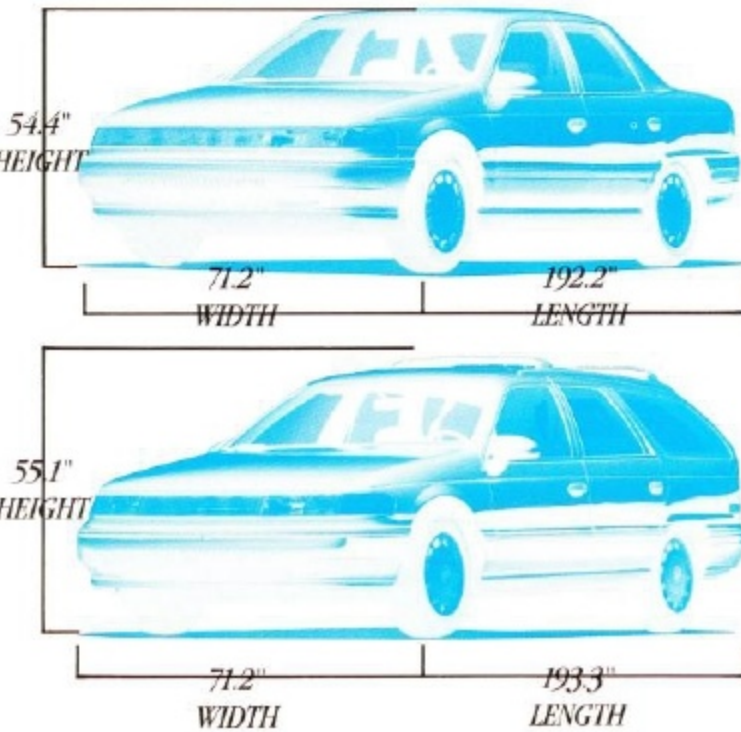
INSTRUMENTATION	GS SEDAN	GS WAGON	LS SEDAN	LS WAGON
Analog instrumentation with speedometer, tachometer, engine coolant temperature gauge, fuel gauge and trip odometer	S	S	S	S
Electronic instrument cluster with speedometer, tachometer, engine coolant temperature gauge, fuel gauge, trip odometer, fuel/distance computer and Diagnostic Systems Scanner (includes extended-range fuel tank)			0	0
WHEELS AND TIRES	GS SEDAN	GS WAGON	LS SEDAN	LS WAGON
P205/65R15 black sidewall with 15-inch deluxe wheel covers	S	S	S	S
15-inch cast-aluminum wheels	0	0	0	0
Conventional-size spare tire	0	0	0	0

PRODUCT CHANGES
Following publication of this catalog, certain changes in standard equipment, options, prices and the like, or product delays, may have occurred which would not be included in these pages. Your Lincoln-Mercury dealer is your best source for up-to-date information.
Lincoln-Mercury Division reserves the right to change product specifications at any time without incurring obligations.

* Deleted if compact disc player is ordered.
** No cost option.
*** Available with leather seating surfaces only.
† Late availability.
‡ Specific content is subject to change throughout model year. Consult your dealer for the most up-to-date information.
¶ Not available on Sable wagon models.
Based on official 1992 MVMA specifications.
For more information on available accessories please call 1-800-346-0000.

PREFERRED EQUIPMENT PACKAGES	GS SERIES 450A 451A	LS SERIES 461A 462A
To make ordering easy we've grouped certain options together into the Preferred Equipment Packages listed below. And priced them to offer sticker price savings over ordering these items individually.†		
Fingertip speed control	• • • •	
Electric rear window defroster	• • • •	
Power side windows	• •	
Power lock group	• • • •	
Electronic AM/FM stereo cassette radio	• •	
Six-way power driver's seat	• • • •	
15-inch cast-aluminum wheels	• • • •	
Light group	•	
Front and rear carpet floor mats	• • • •	
Leather-wrapped steering wheel	• •	
3.8L SEFI V-6 engine	• •	
Power radio antenna	• •	
Premium Sound system	•	
High-level electronic AM/FM stereo cassette audio system	•	
Electronic automatic air conditioner	•	
Autolamp on/off delay system	•	
Keyless entry	•	
Electronic instrument cluster	•	

EXTERIOR COLORS
Oxford White • Crystal Blue Frost Clearcoat • Medium Mocha Clearcoat Metallic • Mocha Frost Clearcoat • Black Clearcoat • Dark Cranberry Clearcoat Metallic • Medium Cranberry Clearcoat Metallic • Dark Plum Clearcoat Metallic • Royal Blue Clearcoat Metallic • Regatta Blue Clearcoat Metallic • Caribbean Green Clearcoat Metallic • Opal Grey Clearcoat Metallic • Silver Clearcoat Metallic
INTERIOR COLORS
Ebony† Crystal Blue Opal Grey Mocha Cranberry



The moon, the stars and the gentle breezes are part of the package when you order Sable's optional power moonroof.



Optional on LS models is a keyless entry system which allows you to open all four doors and the trunk without the aid of a key.



The optional power antenna automatically retracts when the ignition is turned off to prevent vandalism or damage in car washes.

Sable's all-new sound system offerings start with its standard electronic AM/FM stereo (1). Or you can choose an optional electronic AM/FM stereo cassette (2) with automatic tape search. The optional Premium Sound system upgrades this radio with a 60-watt amplifier and premium speakers. Both the High-Level and Ford JBL audio systems may be ordered with an optional compact disc player (4) with scan and shuffle play. All Sable audio systems include automatic volume reset that automatically adjusts sound volume to pre-set levels after the ignition is turned off.

Next is the optional High-Level system which includes 80 watts of power, premium speakers and a premium audio cassette radio (3) with a memory feature that automatically programs the six strongest stations in any area.



Optional fingertip speed control includes controls so perfectly positioned, they're patented.

This 15" deluxe wheel cover comes standard with your Sable.

Or you can order these optional 15" cast aluminum wheels with locking lug nuts to help prevent theft.



Chances are, you started your day by starting your car.

Tens of millions of us do. Every day. All over the country. Surely, nothing we own is more closely and constantly intertwined with our lives than the automobile.

At Lincoln-Mercury, we never lose sight of the fact that our products go on to play a major part in the lives of people. That's why we're dedicated to bringing you cars that will not only serve you faithfully, but will also help make your life more enjoyable.

Stop by a Lincoln-Mercury dealer and see what we're doing.

Motorcraft QUALITY PARTS

Genuine Ford and Motorcraft original equipment replacement parts are engineered and manufactured to Ford's highest specifications. They're your best assurance of quality and long-term satisfaction because these replacement parts meet the same high standards as those installed in production.



The optional Ford Extended Service Plan covers selected components on new Mercury cars for longer than the vehicle's basic warranty. The cost is so moderate for the protection offered that it could pay for itself the first time it is needed. Ask your participating Lincoln-Mercury dealer for complete details of the plan, which is available on cars sold and normally operated in the 50 United States and Canada.



Ford Credit offers advantageous financing arrangements for qualified buyers, plus the convenience of making them right where you buy your car—at your Lincoln-Mercury dealer.

As an alternative to car ownership that may well suit your needs, there's Ford Credit's Red Carpet lease. Ask for the facts on leasing at your Lincoln-Mercury dealer.



EPA statement: 1992 EPA mileage estimates were unavailable when this publication was printed. The 1992 Mercury Sable, however, should post good mileage figures. Ask your Lincoln-Mercury dealer for the latest information.

Option availability: Options shown or described in this catalog are available at extra cost and may be offered only in combination with other options or subject to additional ordering requirements or limitations.

LINCOLN-MERCURY DIVISION

Buckle up—together we can save lives.

LITHO IN USA (717,025) 7-91 P-1101



Printed On Recycled Paper.