

1 9 9 7 G M C



For nearly a century, GMC has built a reputation for extraordinary strength, power and capability. Over the years, that reputation has expanded to include smoothness, comfort and sophistication — once the exclusive domain of luxury cars. Today, GMC offers a wide range of sport utilities, pickups and vans that provide the capability you demand and the refinement you deserve.

Drive a GMC, and you'll feel comfortably in command.

S E L E C T I O N



Yukon By demeanor as well as size, it controls the road. Page Four



Suburban The ultimate utility vehicle, in every dimension. Page Six



Jimmy It helps you accomplish everything you want to do. Page Eight



Sierra The very essence of what a fullsize pickup should be. Page Ten



Sonoma The work-fun-go-for-it-just-the-right-size pickup. Page Twelve



Safari It's not a minivan; it's a step up from them. Page Fourteen



Savana Setting the standard in fullsize vans. Page Sixteen

COMMITMENT.
PLUS

Commitment Plus Portfolio of owner privileges and services. Page Eighteen



Y U K O N

You're not easily impressed, but the Yukon is hard to ignore. Outside, it exudes strength and power. Inside, sheer indulgence. This is a rare combination indeed — the amenities of a luxury sedan and the capability of a GMC. You begin with the formidable strength of the 255 hp Vortec 5700 V8 engine, standard on all Yukons. In the two-door model, there's also the availability of a



V8 turbo diesel. You'll climb steep grades and subdue rough roads almost effortlessly with available Insta-Trac® shift-on-the-fly four-wheel drive — and it can

be as easy as pushing a button. Look inside and you'll be further impressed. There is comfortable, accommodating

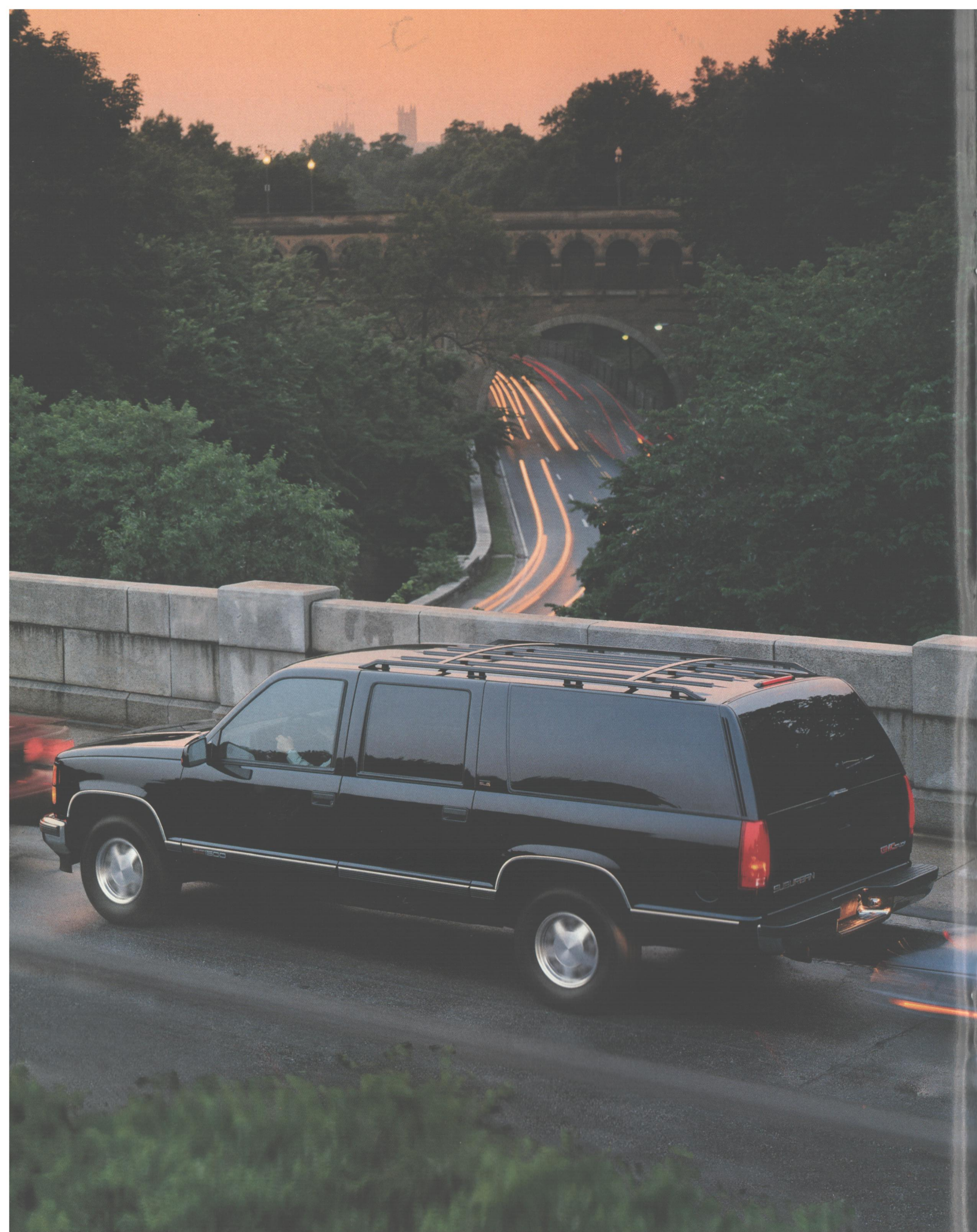


room for both passengers and cargo. Glove-soft leather covers the seating surfaces of the SLT model. With the rear seats folded down, the Yukon four-door provides over 118 cubic feet of space for your gear. Yet even with its generous proportions, Yukon can seem as agile and well-mannered as a luxury sedan. Standard features include independent front suspension, four-wheel antilock brakes and speed-sensitive power steering, which provides excellent road feel at higher speeds, yet requires less effort at lower speeds.



The instrument panel is designed so controls are easy to reach and easy to use. For your peace of mind, dual air bags are also included.* Take command of the Yukon, then take command of the road.

*Please, even with air bags, always wear your safety belts.



S U B U R B A N



When you drive a Suburban, you don't just cruise the road, you take control of it — from your vantage point high above it all. This is the ultimate utility vehicle, and it

is a class unto itself. Suburban can carry up to nine adult-size passengers in comfort, and still leave room for 47.5 cubic feet of cargo.

With three aboard, there's a massive 149.5 cubic feet of room for your precious possessions. In the SLT

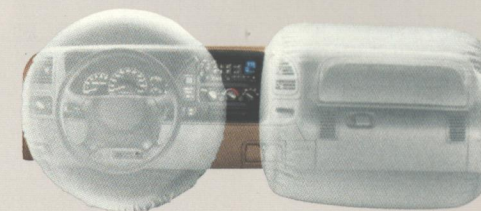
model, you are surrounded by glove-soft leather seating areas. And naturally, Suburban is available

with a long list of amenities, including a combination CD and cassette player. But don't be fooled by its



impressive luxury; Suburban is also a strong and capable performer. You can choose from two Vortec V8 gas engines or a V8 turbo diesel. Maximum trailering capacity goes all the way up to 10,000 pounds.¹ And there's available Insta-Trac® push-button four-

wheel drive for additional traction and control. For all its bigness, Suburban offers an array of thoughtful little touches — from storage areas to cupholders. The overhead console — standard with bucket seats — even has

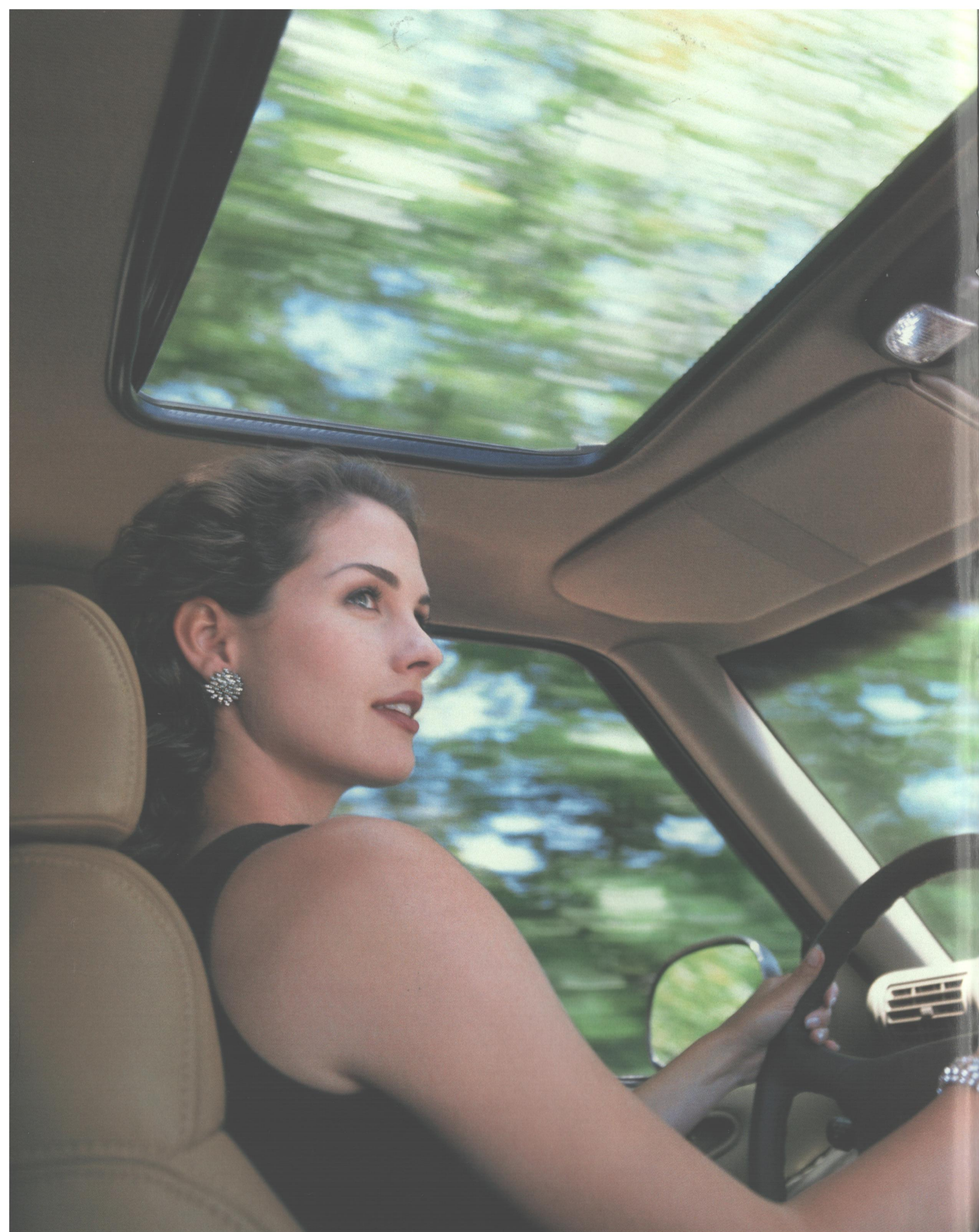


controls for the available rear heating and air conditioning. For your peace of

mind, dual air bags² are standard. If you live life on a grand scale, Suburban

makes a very confident statement — and puts you in command of your own world.

¹ Maximum trailering weight includes driver, one passenger and all required trailering equipment. ² Please, even with air bags, always wear your safety belts.



J I M M Y



Everybody has them: "To Do" lists, full of things you have to do and things you want to do. Enter Jimmy by

GMC, a truly remarkable sport utility that can help you conquer all of your lists. It has the smooth ride and

sumptuous interior you would expect of a luxury car, plus the generous room and impressive capability you

would expect of a GMC. Almost every amenity you can imagine is available in Jimmy, including power sunroof, fine leather seating

surfaces, six-way power driver's seat, trip computer and CD player. Choose the sophisticated

four-door or a sleek, sporty **two-door model**. You can fold down the split-folding rear seats



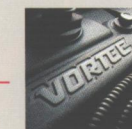
and make room for both people and gear. Just push a button and you have the extra traction of available Insta-Trac®



four-wheel drive. The high seating position gives you a commanding view of the road. The four-wheel antilock

brakes help you maintain directional control even during hard braking. Jimmy's refined Vortec

4300 V6 engine effortlessly provides 190 horsepower and is engineered to go **100,000 miles** before its first scheduled



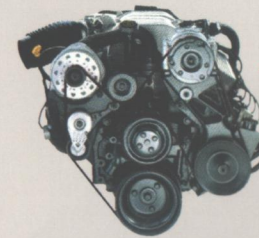
tune-up.¹ And you have a choice of five uniquely tuned suspension systems,

calibrated for your Jimmy. For easy access, the four-door has a standard



liftgate/liftglass.² Now, what can Jimmy do for you?

¹ See owner's manual for recommended maintenance intervals. ² Standard on all four-door models except SL.



One look and you recognize it: Sierra is the classic fullsize American pickup. It is both uncommonly capable and highly refined. Sierra offers five **road-proven engines** to help you get the job done, effortlessly. The Vortec gas engines include a list of long-life components like **platinum-tipped spark plugs**, so

they're engineered to go 100,000 miles before their first scheduled tune-up.¹ You can choose Regular Cab or Extended Cab, 2WD or 4WD. With the innovative 3rd Door, available on the Extended Cab, you gain easy access to the roomy interior. Sierra is built on an extremely durable boxed front semiperimeter frame, with a base payload capacity up to 4572 pounds² and



a maximum trailering capacity up to 12,500 pounds.³ To keep different kinds of cargo in their

place, **two-tier loading** is standard on all Sierras with a Wideside bed. Even with all its

strength and capability, Sierra provides a consistently firm and comfortable ride, whether

empty or loaded. That's due in part to independent front suspension, two-stage multileaf rear springs and speed-sensitive power

steering. Sierra is available with an array of luxury features, from leather seating surfaces to a combination CD/cassette player.

Sierra also has standard four-wheel antilock brakes and **dual air bags**.⁴ Whatever you want

to do, Sierra has the strength, power and style to do it — confidently.



¹ See owner's manual for recommended maintenance intervals. ² When properly equipped; includes weight of passengers and cargo. ³ Maximum trailering weight includes driver, one passenger and all required trailering equipment. ⁴ On models below 8600 lbs GVWR. Please, even with air bags, always wear your safety belts.

Sonoma is a genuinely-capable-highly-versatile-seriously-fun-defiantly-indefinable-just-the-right-size pickup. With your choice of Regular or Extended Cab, Wideside or Sportside bed, short or long bed, Sonoma can be whatever you want it to be.

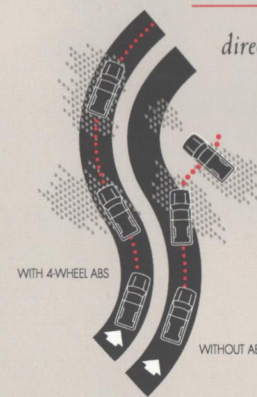


There's also a powerful choice of engines. The 2.2L four-cylinder is standard on 2WD models, and there are two available **Vortec 4300 V6** engines — the LF6, standard on all 4WD models, and the 190 horsepower L35. Both

include a list of long-life components, so there's no scheduled tune-up for 100,000 miles.* There's also the additional traction and capability of available Insta-Trac® shift-on-the-fly **four-wheel drive** — and it's as easy



as pushing a button. Besides being quick, Sonoma is agile and well-mannered, with a choice of five uniquely tuned suspension systems, including Sport suspension. Unlike some pickups, Sonoma has standard **four-wheel antilock brakes**, which help you maintain



directional stability, even during hard braking — important in a pickup that has to be versatile enough to transport

you, work for you and show you a good time. To give you easy access to more room than you might imagine,

Sonoma's innovative **3rd Door** is available on Extended Cab models. You are cordially invited to get into

a Sonoma and get going. Let's face it — Sonoma's the kind

of truck you have to see, and drive, for yourself.



* See owner's manual for recommended maintenance intervals.



S A F A R I



Your family gets bigger, and so do your horizons. You load more things, go more places. Your whole lifestyle grows, and your life becomes too big for a minivan. That's why there's Safari,

a genuine family-size van. Since families come in a variety of sizes, Safari offers a variety of seating arrangements — for five, seven or eight passengers. In the SLT model, all those passengers can be surrounded by available leather seating surfaces. And for your peace of mind, dual integrated child safety seats are



available.¹ Once you've loaded up your passengers, you still have to load up your possessions and tow your boat or trailer.



With Safari, you have the power to do it all. The 190 horsepower Vortec 4300 V6 is the most powerful engine in any midsize van.² You can tow up to 5500 pounds,³ or carry up to 104.4 cubic feet of gear with five passengers aboard and 44.3 cubic feet with seven or eight aboard. Of course, Safari is also very thoughtfully appointed. Air conditioning, AM/FM

stereo and electronic four-speed automatic transmission are all standard equipment. The available overhead console

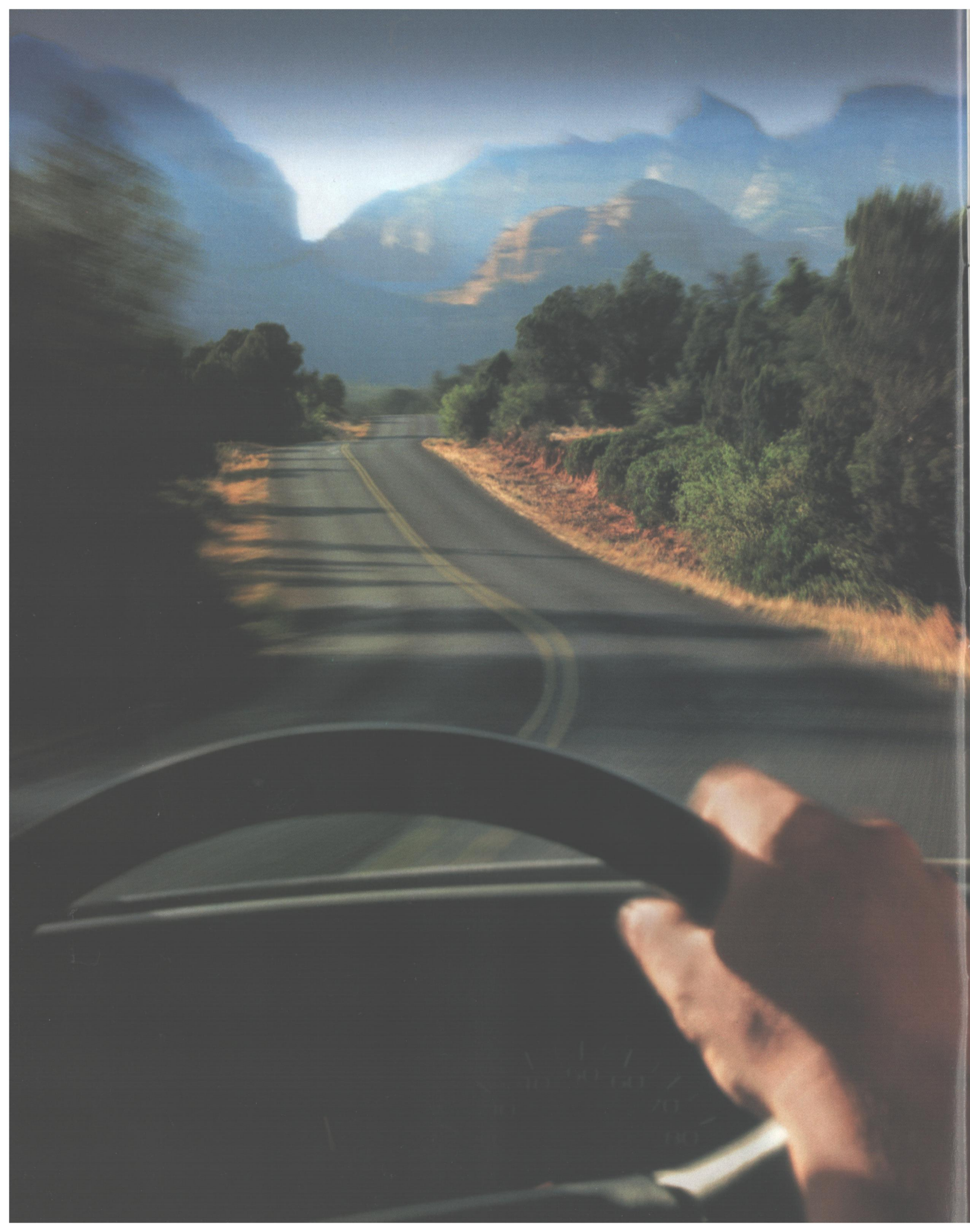


has extra storage areas, as well as map lights, directional compass and outside temperature readout. For your peace of mind,



there's available all-wheel drive in addition to standard four-wheel antilock brakes and dual air bags.⁴ Safari is easy to get into, but it's a big step up from a minivan.

¹ Requires cloth seats and SLE or SLX trim level. Not available at start of production. ² Excludes other GM vehicles. ³ 5500 lbs with RWD, 5000 lbs with AWD. Maximum trailering weight includes driver, one passenger and all required trailering equipment. ⁴ Please, even with air bags, always wear your safety belts.



S A V A N A



We all like to experience America from our own point of view — and make it our own. Savana enables you to do just that. With its generous capacity for passengers and possessions, its commanding view of

the road, its outstanding versatility and its potential for customization, Savana sets new standards for fullsize vans.¹ Savana is available in a variety of conversions from aftermarket suppliers.⁴ The window van has the roomiest interior of all fullsize vans,² with available seating for five, eight, 12 or even 15 passengers. You can open up the rear doors a full 165° and make room for up to 316.8 cubic feet of your worldly possessions—more than any



other van.² Of course, it takes a lot of pull to earn a GMC badge. Savana offers a choice of four Vortec gas engines — the most powerful in any van² — and a V8 turbo diesel. It can tow up to a whopping 10,000 pounds³ of boat or trailer. With its computer-selected front suspension components, two-stage multileaf rear springs, speed-sensitive power steering and four-wheel antilock brakes, Savana is a pleasure to drive. You can choose from an array of available



features, including CD/cassette player, heated



outside mirrors and swing-out or sliding side doors. Just get into Savana's comfortable command center and take off. It's your country.

¹ GMC has selected a number of quality-approved outside conversion manufacturers independent of GMC to design and supply conversion models of Savana. GM and GMC are not responsible for the safety or design features, materials or workmanship of any alterations by any such manufacturer. ² Excludes other GM vehicles. ³ Maximum trailering weight includes driver, one passenger and all required trailering equipment.

When you buy or lease a new GMC, you not only get an excellent vehicle, you get our portfolio of owner privileges. Commitment Plus provides outstanding extras and support services, and lasts throughout the life of your warranty. We want you to feel good about driving a GMC. **Customer Assistance.** For expert help and advice, additional product literature, Roadside Assistance



or any of our other customer support services, you can call our toll-free number: 1-800-GMC-8782.

GMC Orientation. The day you take delivery, your Commitment Plus privileges start. You'll get a thorough

introduction to your GMC's controls and functions. And you'll leave with a full tank of fuel. **Complimentary Service Certificate.**

Once you've driven 3000 miles in your new GMC, you'll receive a complimentary engine oil change and

maintenance inspection at your GMC dealer. **Premium Roadside Assistance.** There is no charge for services such



as emergency roadside fuel delivery, flat tire change, lockout service, jumpstarts and warranty towing. And it's

available around the clock. **Courtesy Transportation.** For same-day warranty service, a one-way shuttle

is provided — up to 10 miles away. Under certain conditions requiring overnight warranty

service, you'll receive a rental vehicle or up to \$30 reimbursement for alternate transportation.¹



Travel Benefits. GMC Roadside Assistance also provides free deluxe trip routing service, including specifically

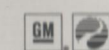
tailored maps. If you need warranty repairs while traveling, you'll receive reimbursement for alternate travel

accommodations in the event of trip interruption.²

COMMITMENT
Plus

¹ Discuss the details with your dealer when making an appointment. ² Your dealer has complete details, including conditions and restrictions.

ABOUT THIS CATALOG. We have made this catalog as comprehensive and factual as possible. We reserve the right to make changes in prices, colors, materials, equipment, specifications, models and availability at any time and without notice. Because some information may have been updated since the time of printing, please check with your GMC dealer for complete up-to-the-minute details. GMC models are equipped with engines produced by the GM Powertrain Division and are assembled by operating units of General Motors, its subsidiaries or suppliers to General Motors worldwide. It is sometimes necessary to produce models that are different or differently sourced than originally scheduled. All such components have been approved for use in GMC models and will provide the same quality performance associated with the GMC name. Since some options may be unavailable when your vehicle is assembled, we suggest you verify that your vehicle includes the equipment you ordered, or, if there are changes, that they are acceptable to you. GMC regularly sends its dealers useful GMC product service bulletins. To obtain these bulletins, ask your dealer or call 1-800-GMC-8782. GMC models are designed and built to resist corrosion. All body sheet metal components are covered by a General Motors limited warranty; see your GMC dealer for terms. Application of additional rust-inhibiting materials is not required or encouraged. For additional information about standard occupant protection, crash avoidance and theft deterrent equipment, please refer to individual product catalogs.



© 1996 GM Corp. All rights reserved. Buckle Up, America! GM, GMC, Yukon, Suburban, Jimmy, Sierra, Sonoma, Safari, Savana and the GMC logo are registered trademarks of General Motors Corporation. Commitment Plus, Comfortably In Command and Vortec are trademarks of General Motors Corporation.



For another way of looking at GMC, visit our website at www.gmc.com

GMC

For more information, please fill out this card, call 1-800-GMC-8782 or visit www.gmc.com on the web.

Please send more information on the following model(s):

Jimmy ☐ Sonoma ☐ Sierra ☐ Suburban ☐ Yukon ☐ Safari ☐ Savana ☐

Name

Address

City State Zip

Day Phone () - Evening () -

Do you currently own a GMC? Yes ☐ No ☐ Year Model

If Yes, your GMC dealer

If No, name of preferred GMC dealer

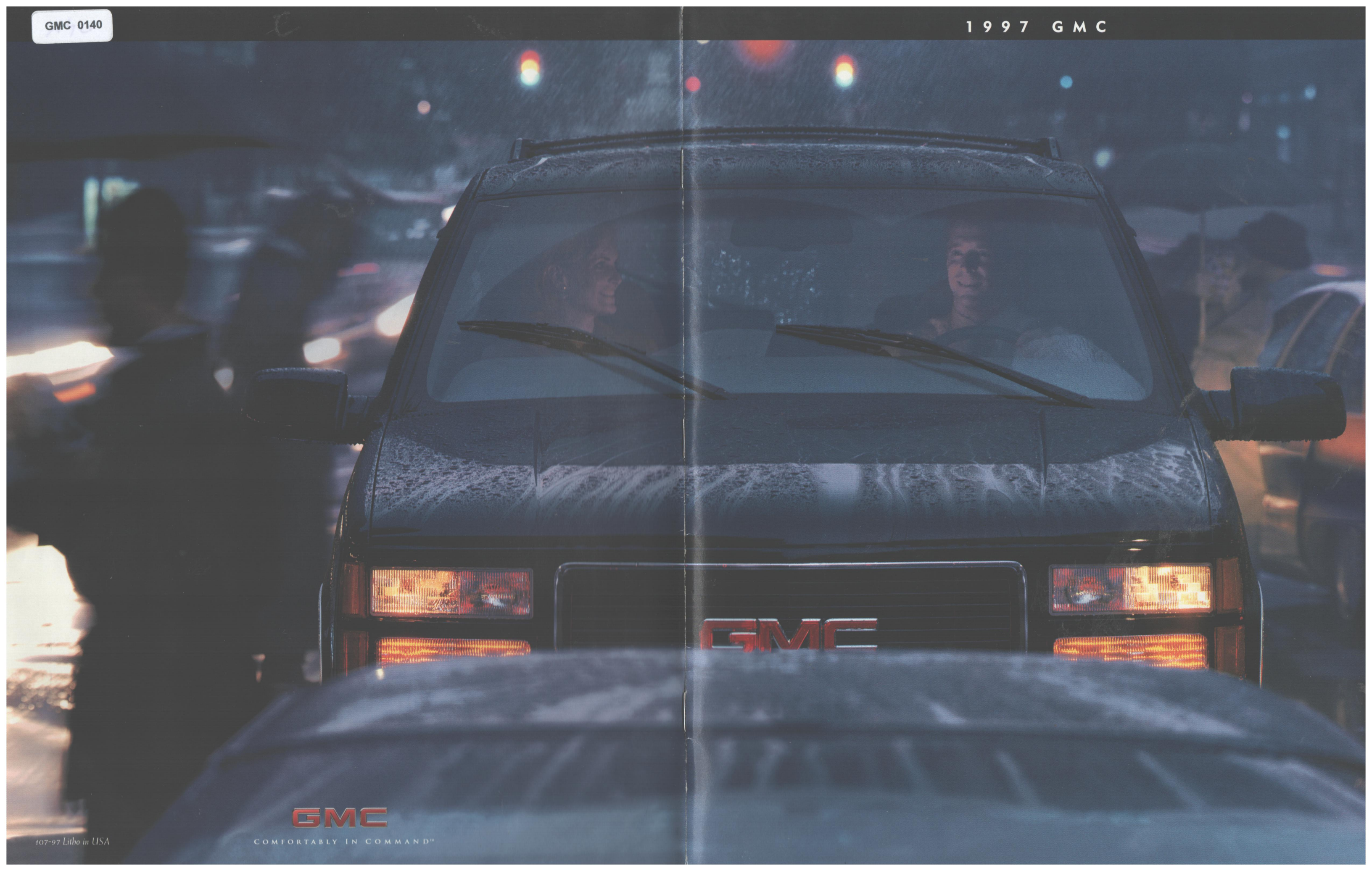
Other vehicles owned: Year Make Model

Year Make Model

Are you likely to buy or lease your next vehicle? Buy ☐ Lease ☐

In what time period? Within 3 months ☐ 4-6 months ☐ 7-12 months ☐ 1-2 years ☐ Not sure ☐

FLB-97



GMC

COMFORTABLY IN COMMAND™