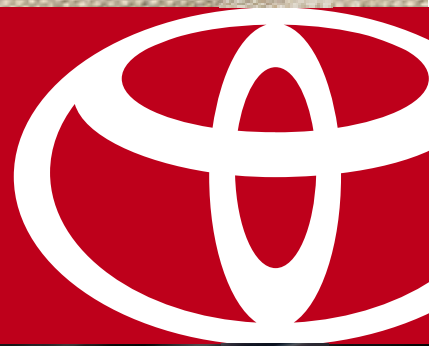


05 *Camry*
Sedan

TOYOTA
the feeling never ends

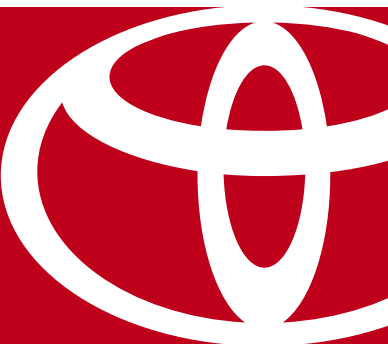


Once you see Camry Sedan 2005 for yourself, you know. You take in Camry Sedan's newly redesigned grille, headlamps and taillights, its flowing lines, sculpted form and subtle yet striking colour palette. You gaze upon its stylish profile and bold rear stance. And you smile. You've had these feelings before – just not for a car. Now wait until you drive it. And because everyone has different wants and needs, we created three new, unique versions of the Camry Sedan. All blend style and performance with a healthy dash of elegance. All designed to capture your attention – and keep it. LE, SE and XLE V6.

05

Camry Sedan

AS INDIVIDUAL AS YOUR DESIRES.



2



From left: Camry Sedan SE V6 shown in Salsa Red Pearl, Camry Sedan XLE V6 shown in Titanium Metallic and Camry Sedan LE

shown in Frosted Mink Pearl.

Camry Sedan XLE V6

shown in Mineral

Green Opal.

4





6

7

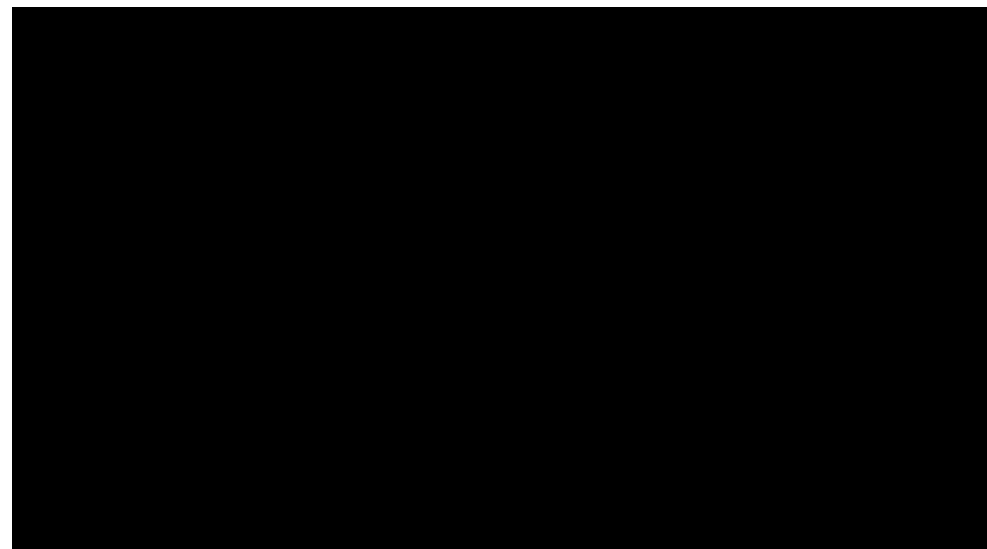


MORE ROOM – MORE LEATHER – MORE MORE. The elegant, spacious and refreshed Camry Sedan XLE V6 interior surrounds you with ergonomic convenience and comfort. The boldly designed centre cluster is very well appointed with optitron gauges and a multi-informational display that concentrates vital information – instant and average fuel economy, average speed

and more. Camry Sedan XLE V6 also features a power driver seat, a rear sunshade and a unique XLE V6 trim package with leather interior and heated seats. All 2005 Camry Sedan models have an amazing .47 cubic metres (16.7 cu. ft.) of luggage capacity. Camry Sedan is a bit like a private club – only you get to pick the guest list.

Above: Camry Sedan XLE V6's woodgrain-style interior and optional rich, elegant leather.

CAMRY SEDAN LE EXPLAIN AGAIN WHY TRAFFIC JAMS ARE BAD. When you surround yourself with the luxury and comfort of Camry Sedan LE's interior, it's amazing how much more enjoyable your daily commute can become. Camry Sedan LE/LE V6 – with a smart and stylish centre cluster, optitron gauges, steering wheel with audio controls, an AM/FM CD with 6-speakers, a clean air filter and Antilock Braking System (ABS) – because let's face it, for the amount of time you spend driving, shouldn't your car be a place you want to be?



Above top: The stylish Camry Sedan LE shown in Titanium Metallic with optional equipment.

Above: The luxurious and comfortable Camry Sedan LE fabric interior.



Left: Camry Sedan SE V6 with aluminum instrument panel accents and leather interior, shown with optional equipment.

Below: Camry Sedan SE V6 shown in Salsa Red Pearl.

FLAVOUR ADDED. Camry Sedan SE. Take class and add a sporty twist. For the very passionate, there's the bold 225 hp V6 with a 5-speed, electronically controlled overdrive, automatic transmission – or choose a 5-speed manual transmission* powered by Camry Sedan's smooth and responsive 160 hp, VVT-i, 4-cylinder engine. Both Camry Sedan SE and SE V6 are equipped with a sport suspension, alloy wheels, rear spoiler, sport grille, fog lamps and unique sport seats. The cockpit command centre spices things up with a leather-wrapped shift knob, sculpted 3-spoke, leather-wrapped steering wheel with audio controls, aluminum instrument panel accents and sport-inspired optitron gauges. Camry Sedan SE – slightly more aggressive.

**Optional 5-speed automatic.*



CAMRY SEDAN SE

CAMRY SEDAN PERFORMANCE. True love moves fast. In this case, very fast. They say the fastest way to a man's heart is through his stomach. We think it's through the gas pedal. Camry Sedan's LE and SE 160 hp, 4-cylinder engine is not quite what it seems (love is like that). It gives you what you need and doesn't ask for much in return. For more excitement, there's an aggressive 210 hp for the LE V6/XLE V6 and 225 hp for the SE V6. Both will get the tachometer pumping. And once Camry Sedan's multiport fuel injection and double-overhead cams kick in, well, that's the start of one beautiful relationship.



CAMRY SEDAN SAFETY. When we came up with a way to make the Camry Sedan more powerful, more spacious, or even more stylish, we looked at the other side of the equation: how can we also make it safer? So we've added dual-stage airbags, child restraint anchors, head impact protection

and an impact-absorbing body. Front and rear head/side curtain airbags are standard on the XLE V6. Vehicle Stability Control (VSC) is available as an option.* Safety and performance both residing comfortably in one beautiful, stylish package.

CAMRY SEDAN SAFETY FEATURES

- Dual-stage driver and front passenger airbag Supplemental Restraint System (SRS) • Front seat mounted side airbag Supplemental Restraint System (SRS)* • Front and rear head/side curtain airbag Supplemental Restraint System (SRS)* • Front passenger airbag status indicator
- Antilock Braking System (ABS) • Available Vehicle Stability Control (VSC) System with Traction Control (TRAC) and Brake Assist*
- 3-point seatbelts in all seating positions with adjustable seatbelt anchors on front seats, driver's belt Emergency Locking Retractor (ELR), Automatic/Emergency Locking Retractor (ALR/ELR) on all other

- outboard belts • Adjustable headrests in all seating positions
- Front seatbelt pre-tensioners with force limiters • Driver and front passenger seatbelt warning system • Anchor points for child restraint seats • Child protector rear door locks • Collapsible steering column
- Reinforced steel unit-body with high-tensile-strength steel body panels
- Front and rear crumple zones and front and rear side-impact door beams • Security systems available on all models (standard on XLE V6)
- Trunk entrapment release

* XLE V6 only



DRESS IT UP. DRIVE IT OUT. Make your statement. Your new Toyota Camry Sedan can very easily become a reflection of your personality and lifestyle. All you have to do is select which of the Toyota Accessories you'd like to add to your Camry Sedan to make it truly yours. Your Toyota Dealer will gladly assist you in customizing your new vehicle. To find the Toyota Dealer nearest you, go to toyota.ca or call **1-888-TOYOTA-8.**



Cargo liner

Cargo net

Moonroof wind deflector

Navigation system

Camry Sedan all dressed up with a moonroof wind deflector

and a "body kit" which includes front & rear

bumper chins and side skirts.



Enhance the look and functionality of your new

Camry Sedan by choosing from the following list of Accessories:

- All-season mats • Block heater • Body kit • Cargo box
- Cargo mat • Dash accent kit • Glass breakage sensor • Hood deflector
- Licence plate cover • Performance exhaust • Rear obstacle sensing system • Rear lip spoiler • Rear spoiler • Security system
- Side window visors • Splash guards • Towing accessories



3Q3 Salsa Red Pearl^{1,2,3,4}

2005 CAMRY SEDAN COLOURS



1C8 Titanium Metallic^{1,2,3,4}



040 Alpine White^{1,2,3,4}



202 Black^{1,2,3,4}



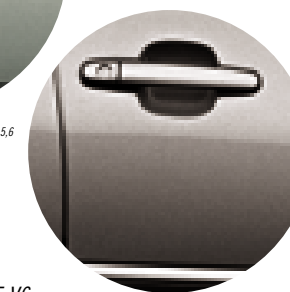
8P4 Indigo Ink^{1,2}



4Q2 Frosted Mink Pearl^{5,6}



6R6 Mineral Green Opal^{5,6}



1E3 Phantom Grey Pearl^{1,2,3,4}

¹ Stone Fabric on LE, LE V6, XLE V6

² Stone Leather on XLE V6

³ Dark Grey Sport Fabric on SE

⁴ Dark Grey Leather on SE, SE V6

⁵ Fawn Fabric on LE, LE V6, XLE V6

⁶ Fawn Leather on XLE V6

NEW VEHICLE WARRANTY SUMMARY

No Deductibles – No Transfer Fees

Comprehensive Coverage - 3 years or 60,000 km

This warranty includes 24 hour Roadside Assistance and other benefits, as well as coverage of repairs on any part of the vehicle that is defective in material or workmanship under normal use and maintenance. Different warranties apply to original tires.

Powertrain Components - 5 years or 100,000 km

This warranty covers repairs to powertrain components that are defective in material or workmanship under normal use and maintenance.

Major Emission Control Components - 8 years or 130,000 km

This warranty covers repairs to specified major emission components that are defective in material or workmanship under normal use and maintenance.

Corrosion Perforation - 5 years unlimited distance

Any sheet metal found, under normal use, to have developed a perforation from corrosion due to defects in material or workmanship.

VEHICLE COVERAGE



With Extra Care Protection you receive inflation protected coverage from mechanical failures, road emergencies, and much more. It's the most affordable way to guarantee your peace of mind. Consult your Toyota Dealer for details.



TOYOTA EXPERIENCE Toyota Dealers

The part you can't replace are dedicated to making the experience of owning a Toyota both satisfying and rewarding. Our highly skilled, Toyota-trained technicians are here to make sure you enjoy many years of trouble-free driving. "That new Toyota feeling - we help you keep it."



If you're looking at leasing or financing, we're here to help. We provide competitive interest rates, flexible terms, and an easy online pre-approval process. The toughest decision should be choosing which Toyota you want. Visit us at www.toyotafinancialservices.ca.



Toyota Canada and its Dealers are proud sponsors of Canadian Special Olympics.



CAMRY SEDAN

FEATURES

CAMRY SEDAN	LE	LE V6	XLE V6	SE	SE V6
INTERIOR:					
• AM/FM/CD Player, 6-Speakers	•	•	•	•	•
• JBL AM/FM/Cassette/CD 6-Disc Changer, 6-Speakers			•		•
• Diversity Antenna			•		•
• Steering Wheel Audio Controls	•	•	•	•	•
• Air Conditioning	•	•	•	•	•
• Air Conditioning w/Automatic Climate Control			•		
• Clean Air Filter, Rear Seat Heater Ducts	•	•	•	•	•
• Front Bucket Seats	•	•	•	•	•
• Fabric Seat Material, Fabric Door Trim	•	•	•	•	
• Leather Seat Surfaces & Simulated Leather Door Trim					•
• Driver & Front Passenger Seat Recline, Headrest-Vertical Adjustments	•	•	•	•	•
• Driver Seat Lumbar Support Adjustment	•	•	•	•	•
• Power Driver Seat Recline, Fore/Aft, Vertical Adjustments			•		•
• Heated Driver & Front Passenger Seats					•
• Rear Seat Headrest-Vertical Adjustments	•	•	•	•	•
• 60/40 Split Rear Bench Seat w/Fold-Down Seat Back	•	•	•	•	•
• Rear Seat Fold-Down Centre Armrest, Rear Security Lock	•	•	•	•	•
• Power Door Locks & Windows w/Driver Side Auto Down	•	•	•	•	•
• Optitron Electronic Gauges	•	•	•	•	•
• Tachometer, Water Temperature Gauge, Outside Temperature Gauge, Dual Trip Odometer	•	•	•	•	•
• Multi-Information Display w/Instant & Average Fuel Economy, Remaining Driving Range, Average Speed, Elapsed Time					•
• Dual Vanity Mirrors	•	•			•
• Dual Illuminated Vanity Mirrors			•		•
• Electrochromic Rear View Mirror w/Digital Compass			•		•
• 4-Spoke Tilt Steering Wheel	•	•			
• Leather-Wrapped 3-Spoke Tilt Steering Wheel & Shift Knob					•
• Aluminum Instrument Panel Accents					•
• Simulated Woodgrain Trim			•		
• Carpeting, Carpet Floor Mats	•	•	•	•	•
• Trunk Area Carpet, Interior Trunk Access	•	•	•	•	•
CONVENIENCE:					
• Cruise Control, Overhead Sunglass Storage, Cargo Net	•	•	•	•	•
• Digital Clock	•	•	•	•	•
• Trunk & Glove Box Interior Lamps	•	•	•	•	•
• Front Centre Console Box w/Lid, Glove Box Lock	•	•	•	•	•
• Front & Rear Cup Holders, Door Map Pockets, Shopping Bag Hooks	•	•	•	•	•
• Front Seat Back Pockets			•		•
• Rear Sunshade			•		
• Garage Door Opener			•		•
• Keyless Entry w/Trunk Release	•	•	•	•	•
• Accessory Power Outlets, Retained Accessory Power	•	•	•	•	•
• Illuminated Ignition Key	•	•	•	•	•
• Illuminated Entry w/Fade-out Dome Lamp	•	•	•	•	•

• - Standard ○ - Optional *See Airbag Notice

CAMRY SEDAN	LE	LE V6	XLE V6	SE	SE V6
SAFETY:					
• Dual-Stage Driver & Front Passenger Airbag Supplemental Restraint System (SRS)*	•	•	•	•	•
• Front Seat Mounted Side Airbags (SRS)*			•		
• Front & Rear Head/Side Curtain Airbags (SRS)*			•		
• Front Passenger Airbag Status Indicator	•	•	•	•	•
• Front Seatbelt Pre-Tensioners & Force Limiters	•	•	•	•	•
• Adjustable "B" Pillar Shoulder Belt Anchors	•	•	•	•	•
• All-Position 3-Point Lap & Shoulder Belts	•	•	•	•	•
• Anchor Points for Child Restraint Seats	•	•	•	•	•
• Child Protector Rear Door Locks	•	•	•	•	•
• Engine Immobilizer	•	•	•	•	•
• Anti-Theft System			•		
• Trunk Entrapment Release	•	•	•	•	•
• Fuel Cap Hanger	•	•	•	•	•
• Remote Fuel Lid Release	•	•	•	•	•
• Low Washer Fluid, Low Fuel Warnings	•	•	•	•	•
EXTERIOR:					
• Full Wheel Covers	•				
• Aluminum Alloy Wheels			•	•	•
• Side Window Defoggers	•	•	•	•	•
• Power Tilt & Slide Moonroof			•		•
• High Solar Energy Absorbing Window Glass	•	•	•	•	•
• Coloured Bumpers, Door Handles & Mirrors, Bodyside Mouldings	•	•	•	•	•
• Coloured Rear Spoiler					•
• Front & Rear Splash Guards			•		•
• Sport Style Grille, Chrome Tail Pipe					•
• Dual, Heated, Power Remote-Control Mirrors	•	•	•	•	•
• Variable Intermittent Wipers	•	•	•	•	•
• Fog Lamps			•		•
• Aerodynamic Multi-Reflector Halogen Headlamps w/Automatic Headlamp Control System	•	•	•	•	•
PACKAGES:					
LE PACKAGE:					
• Aluminum Alloy Wheels, Power Driver's Seat, Power Moonroof, Garage Door Opener, Front & Rear Splash Guards			○		
SE PACKAGE:					
• Power Driver's Seat, Leather Seat Surfaces, Heated Front Seats, Power Moonroof, Garage Door Opener					○
LE V6 PACKAGE:					
• Power Driver's Seat, Power Moonroof, Garage Door Opener			○		
XLE V6 PACKAGE:					
• Vehicle Stability Control (VSC), Traction Control System (TRAC), Antilock Braking System (ABS) w/Brake Assist, Heated Driver & Front Passenger Seats, Power Front Passenger Seat, Leather Seat Surfaces, Leather-Wrapped Steering Wheel, Simulated Leather Door Trim					○
GROUND EFFECTS PACKAGE:					
• Coloured Full Skirt					○ ○

CAMRY SEDAN	LE	LE V6	XLE V6	SE	SE V6
MECHANICAL					
Engine	• 2.4 Litre, 4-Cylinder, DOHC, 16-Valve, Variable Valve Timing w/intelligence (VVT-i), Sequential Multiport Electronic Fuel Injection	•			•
	• 3.0 Litre, V6, DOHC, 24-Valve, Variable Valve Timing w/intelligence (VVT-i), Sequential Multiport Electronic Fuel Injection		•		
	• 3.3 Litre, V6, DOHC, 24-Valve, Variable Valve Timing w/intelligence (VVT-i), Sequential Multiport Electronic Fuel Injection, Acoustic Control Induction System				•
Compression Ratio	• 9.6 : 1 • 10.5 : 1 • 10.8 : 1	•		•	
Horsepower (kW)	• 160 (119) @ 5700 rpm • 210 (156) @ 5800 rpm • 225 (168) @ 5600 rpm	•		•	
Torque (N.m.)	• 163 (221) @ 4000 rpm • 220 (298) @ 4400 rpm • 240 (325) @ 3600 rpm	•		•	
Suspension	• Front: MacPherson Gas Struts, Coil Springs, Stabilizer Bar • Front: MacPherson Gas Struts, Strut Tower Bar, Coil Springs, Stabilizer Bar, Sport Suspension • Rear: Independent, MacPherson Gas Struts, Dual Link, Coil Springs, Stabilizer Bar • Rear: Independent, MacPherson Gas Struts, Dual Link, Coil Springs, Stabilizer Bar, Sport Suspension	•	•	•	
Drivetrain	• Front Engine/Front-Wheel Drive • Vehicle Stability Control (VSC), Traction Control System (TRAC)	•	•	•	•
Transmission	• 5-Speed, Manual, Overdrive • 5-Speed, Electronically Controlled Overdrive Automatic w/Lock-Up Torque Converter & Overdrive Cancel Switch			•	
Brakes	• Power-Assisted Ventilated Front Discs, Rear Drums, Antilock Braking System (ABS) w/Electronic Brake Force Distribution (EBD) • Power-Assisted 4-Wheel Discs (Ventilated Front Discs), Antilock Braking System (ABS) w/Electronic Brake Force Distribution (EBD) • Brake Assist w/Antilock Braking System (ABS)	•			
Steering	• Rack & Pinion w/Variable Power Assist	•	•	•	•
Tires	• P205/65R15, All-Season Radials, Full-Size Spare • P215/60R16, All-Season Radials, Full-Size Spare • P215/55R17, All-Season Radials, Full-Size Spare	•	•		•

CAMRY SEDAN	LE	LE V6	XLE V6	SE	SE V6
DIMENSIONS mm (in.)					
Length	4805 (189.2)	•	•	•	•
Width	1795 (70.7)	•	•	•	•
Height (Unloaded)	1490 (58.7)	•	•	•	•
Wheelbase	2720 (107.1)	•	•	•	•
Tread	Front: 1545 (60.8) Rear: 1535 (60.4)	•	•	•	•
Seating Capacity	5	•	•	•	•
Headroom	Front: 996 (39.2) Rear: 973 (38.3)	•	•		•
(with Moonroof)	Front: 975 (38.4) Rear: 970 (38.2)	○	○	•	○
Legroom	Front: 1057 (41.6) Rear: 960 (37.8)	•	•	•	•
Shoulder Room	Front: 1461 (57.5) Rear: 1440 (56.7)	•	•	•	•
GROSS VEHICLE WEIGHT kg (lb)					
Manual	1900 (4189)				•
Automatic	1905 (4200) 1925 (4244) 1985 (4376) 2015 (4442) 2030 (4475)	•			○
CURB WEIGHT kg (lb)					
Manual	1435 (3164)				•
Automatic	1410 (3106) 1460 (3219) 1515 (3340) 1555 (3428) 1565 (3450)	•			○
CARGO CAPACITY m³ (cu. ft.)					
	0.473 (16.7)	•	•	•	•
FUEL CAPACITY litres (gal.)					
	70 (15.4)	•	•	•	•
FUEL CONSUMPTION RATING**					
	L/100 km	mpg			
City/Highway					
Manual	9.8/6.5	29/43			•
Automatic	10.0/6.4	28/44	•		○
	11.5/7.5	25/38		•	
	11.4/7.5	25/38			•

• - Standard ○ - Optional

** These estimates are based on the Government of Canada's approved criteria and testing methods. The actual fuel consumption of this vehicle may vary. Refer to the Government of Canada publication *EnerGuide Fuel Consumption Guide*.

* Airbag Notice: The 2005 Camry Sedan features a driver & front passenger airbag Supplemental Restraint System (SRS) which activates only in a full-frontal collision of sufficient magnitude to inflate the bags. In moderate frontal collisions, the airbags may not inflate; in a rear or side collision the airbags are designed not to inflate, so the primary protection is provided by the lap and shoulder belt system. The 2005 Camry Sedan also features a Front Seat Mounted Side Airbag and Front & Rear Head/Side Curtain Airbag (XLE V6 only) Supplemental Restraint System (SRS) which activates only in a side-impact collision of sufficient magnitude to inflate the bags. *Seatbelts must be worn at all times by all occupants.*

CAMRY SEDAN

SPECIFICATIONS*

*Toyota Canada Inc. Every effort has been made to ensure the specifications and equipment shown are accurate based on information available at time of printing. In some cases, certain changes in standard equipment, options or product delays may occur which would not be reflected in this brochure. Toyota Canada Inc reserves the right to make these changes without notice or obligation. The Toyota website toyota.ca — or your Toyota Dealer is your best source for up-to-date information.



Toyota Camry Sedan.

Toyota Canada, in partnership with the Canadian Tourism Commission, has developed a national program to promote tourism within Canada. "GET GOING CANADA" encourages Canadians to drive Canada, see its wonders, and demonstrates our pride in and dedication to *"the world's greatest country"*.

1-888-TOYOTA-8  toyota.ca



Toyota recognizes its duty to safeguard the environment. To support this, our brochure is printed on recycled paper with vegetable-based inks to be fully recyclable.

PRINTED IN CANADA C0002-0425E-25 43M/40M