

2016

Jetta



Das Auto.



Unforgettable value.

We didn't think it could get any better. But it did. The 2016 Jetta is our most innovative Jetta yet. The engine is incredibly fuel-efficient. It's loaded with great features. And you'll find precise German craftsmanship everywhere you look. The only thing that's missing is you.

Design

Beautifully styled with refined German design. It's made smart and it looks smart. That's why it's such a smart choice.

Quality

You can hear it, you can see it, and if you take a seat inside you'll definitely be able to feel it. Quality is built into every inch of the 2016 Jetta.

Technology

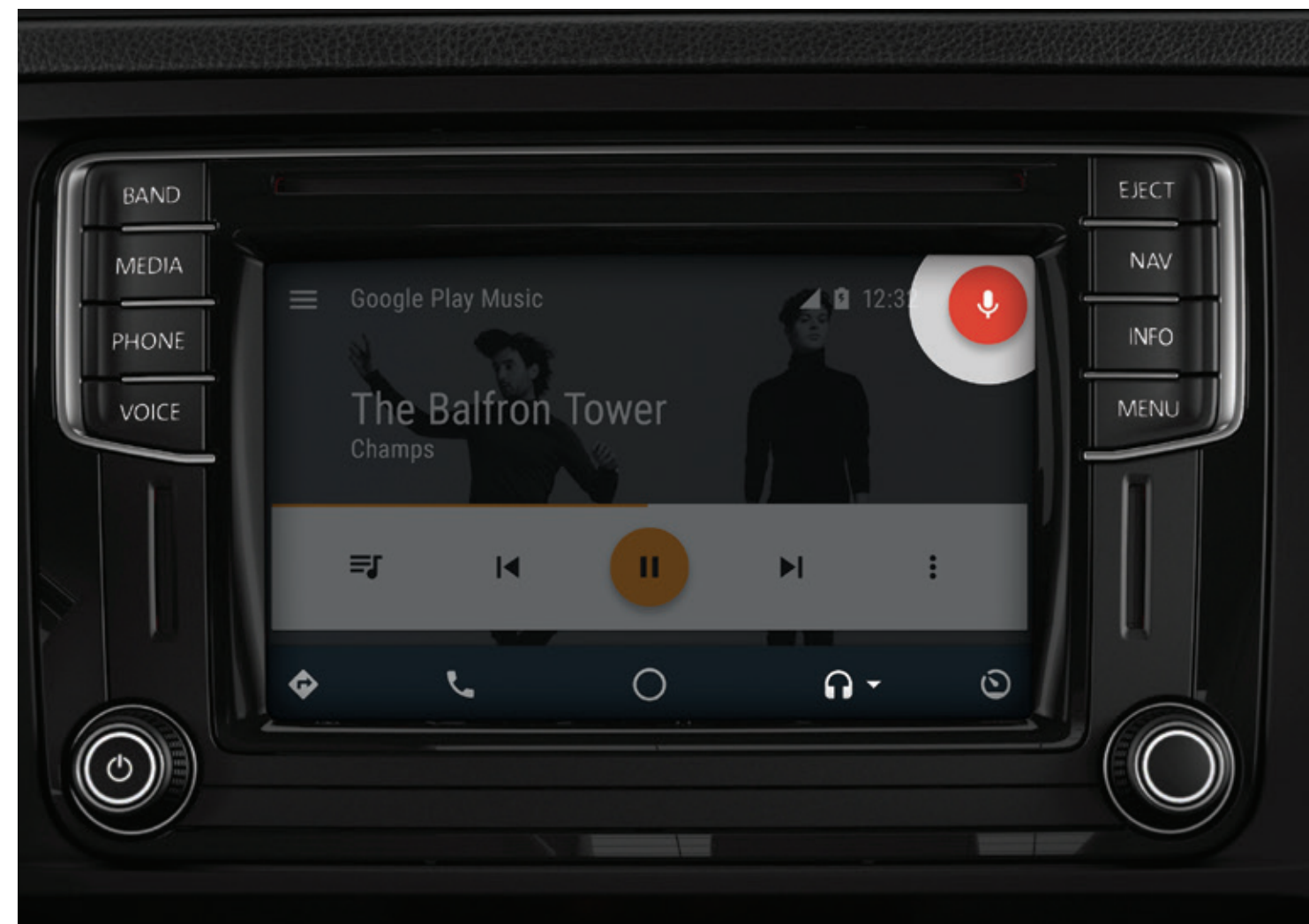
We put the most convenient and entertaining technology in the Jetta, so you get the most enhanced driving experience out of it.

Performance

With an available 6-speed automatic transmission and turbocharged engine, it's the most fun you're legally allowed to have while sitting down.

Better driving at your fingertips.

Technology has always moved forward. Now it can take corners, reverse and park. The 2016 Jetta's tech features give you the newest in convenience and entertainment, so you can take enhanced driving with you wherever you go.



Available App-Connect (Android Auto™, Apple CarPlay™, MirrorLink™)*

Connect to the things that matter most. The intuitive interface and voice command actions let you easily search online for songs, directions or even your favourite restaurant. So you'll keep your eyes on the road, and not on your screen.

Available Fender® Premium Audio System

The 8-speaker system will have you feeling like you've got the best seat in the house. Or in this case, the best seat on the road.

Available Discover Media*

The new Discover Media infotainment system combines next-generation navigation with in-car media entertainment and App-Connect functionality, all controlled from its easy-to-use 6.33" touchscreen colour display.

*Do not drive distracted.

Leave boring behind.



Bring on the fun. How much is up to you. The turbocharged 1.4 TSI® engine and 6-speed transmission will have you sitting on the edge of your seat. Figuratively, not literally.



Available 1.4 TSI® engine

The powerful yet lightweight 1.4 TSI® replaces the 2.0L 4-cylinder engine, bringing with it an abundance of benefits for drivers. This revolutionary engine has more horsepower, faster acceleration, more torque, and better throttle response to go with even better fuel economy.

Available 6-speed automatic transmission

With 6 speeds that suit any driving situation, the Jetta isn't just fuel-efficient, it's fun-efficient.

Fuel Consumption*	Engine	City L/100 km	Highway L/100 km
Manual	1.4 TSI®	8.3	5.9
Automatic	1.4 TSI®	8.5	6.0
Manual	1.8 TSI®	9.4	6.4
Automatic	1.8 TSI®	9.2	6.4

*Fuel consumption figures are estimates based on Natural Resources Canada's approved criteria and testing methods. Your fuel consumption will vary.

Beauty is in the driveway of the beholder.

The Jetta is sleek, modern, stylish, and appropriate for any dress code. It's just a bonus that its features are designed to give you the best driving experience possible.



Available Bi-Xenon headlights

They're brighter. They last longer. They consume less energy. And they're smarter. In fact, the Bi-Xenon lights have an Adaptive Front-light System that turns up to 13 degrees around corners before you do. Smart indeed.

Side mirrors with integrated turn signals

Turn signals that turn your car into a sleek and modern ride that's ready to take on modern traffic.

Available fog lights

Driving in fog is hard enough. You don't need light reflecting into your eyes to make it harder. That's why these lights point directly at the ground, making it safer for you and everyone else on the road.

Quality in large quantity.



You spend a lot of time in your car, so we made sure it's well spent. The 2016 Jetta combines the highest-quality parts with the highest-quality German engineering. So whether it's 5 minutes or 5 hours, time spent in the new Jetta is always quality time.



Forged-steel door hinges

Details. Details. Details. Like, for example, forged-steel door hinges that open and close just right every time.

Laser seam welding

This superior welding technique fuses metal into a single piece along a continuous seam, instead of spot-welding. It makes for a safer, sturdier car. Just the way it should be.

Soft-touch dashboard

It's premium. It's soft. And you can touch it. Technically, that's a hat trick.

Discover the great indoors.

Take a seat in the 2016 Jetta and you'll find comfort and quality built into every inch. From the available heated seats, to the available Climatronic® dual-zone electronic climate control, every feature is a tasteful reminder that you've made the right choice.

Available heated front seats and washer nozzles

Enjoy the comfort of a warm seat. And the comfort of knowing that the washer nozzles won't freeze, so you can clean your windshield no matter what it's like outside.

Available 6-way power driver's seat with manual lumbar support

Adjust your seat to your back's content. (See what we did there?)

Multifunction steering wheel

Not only does it steer, but you can use it to command your infotainment system too. It's the most control you'll get out of a steering wheel. Hands down.

Available Climatronic® dual-zone electronic climate control

We've separated the driver and front passenger seats into two temperature zones. Each is adjustable in increments of 0.5 degrees, and you could enjoy more than a 10-degree difference between the two. Because comfortable passengers mean a comfortable driver.

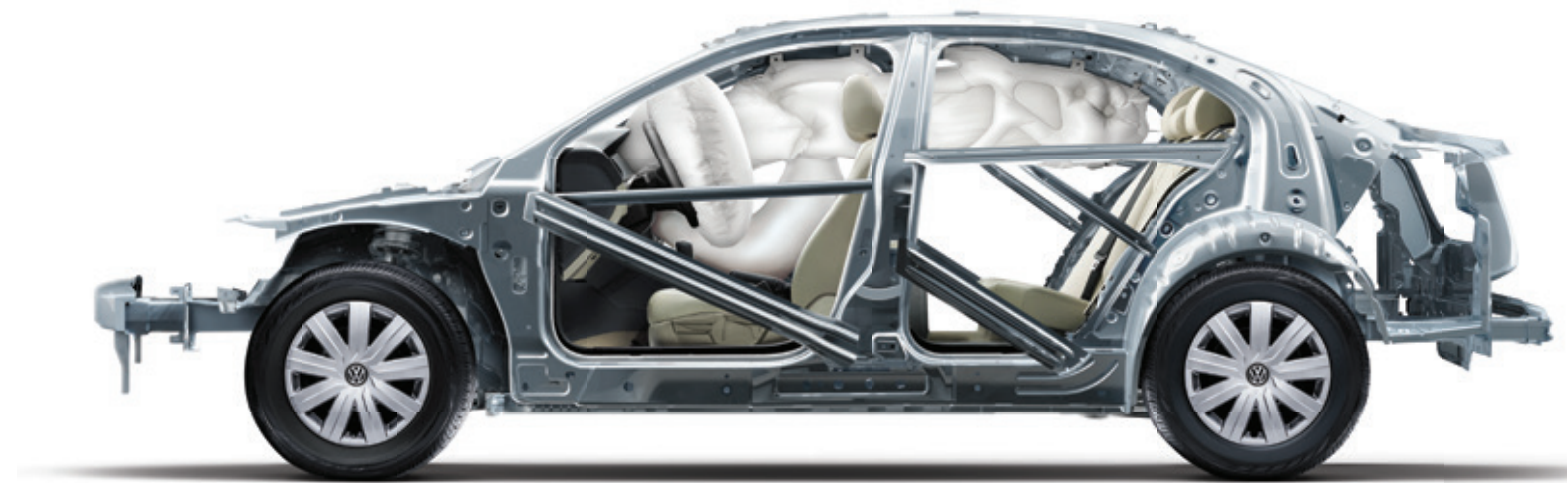
It has your back. And your front. And your sides.

Driver and passenger airbags

With front, torso and side curtain airbags for the front seats, and side curtain airbags for the back seats, no matter where you're sitting we've got you covered from multiple angles.



If there's safety in numbers, then you can count on the new Jetta. Proactive systems like available Blind Spot Detection and the Intelligent Crash Response System make sure that your safety's always accounted for. Even when you're not counting on it.



Dramatization†

Standard rearview camera*

See what lies on the road behind. With a camera installed above your licence plate on the back of your Volkswagen, you'll be able to see what's behind you when you're reversing.

Safety cage

You can't see it, but if a collision becomes unavoidable you'll know it's there. Hidden pillars form a rigid safety cell around the cabin, helping to reduce risk of injury or death.

Intelligent Crash Response System (ICRS)**

Looking out for you when you need it most, this automatic safety system disables the fuel pump, turns on the hazard lights and unlocks all doors in the event of a collision.

† Not all airbags will deploy, and if multiple airbags do deploy, they will be in various stages of inflating/deflating.

* Driver assistance feature. Drivers must continue to perform manual checks before proceeding and pay full attention to the road.

** ICRS will only engage if an airbag is deployed or a safety belt tensioner fires.

Standard Wheels



15" steel wheel TL/TL+ 16" Black Gloss alloy wheel CL 17" Salamanca alloy wheel CL Sport Package 17" Lancaster alloy wheel HL

Exterior & Interior Colours

	Titan Black Doryc cloth	Titan Black Sienna cloth	Ceramique/Titan Black Sienna cloth	Titan Black Vienna leather	Ceramique Vienna leather
Pure White	TL/TL+	CL	CL	HL	HL
Tornado Red	TL+	CL	CL	HL	HL
Dark Bronze Metallic	-	CL	CL	HL	HL
Moonrock Silver Metallic	TL+	CL	CL	HL	HL
Platinum Grey Metallic	TL/TL+	CL	CL	HL	HL
Reflex Silver Metallic	TL/TL+	CL	CL	HL	HL
Ruby Red Metallic	-	CL	CL	HL	HL
Silk Blue Metallic	TL/TL+	CL	CL	HL	HL
Deep Black Pearl	TL/TL+	CL	CL	HL	HL

Accessories



Trunk liner with logo



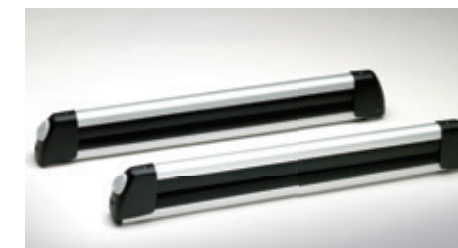
Monster Mats®



Rear lip spoiler



Chrome exhaust tips



Base carrier bars



Shopping bag hook

Features

Trendline (TL)

Engines:

- 1.4 TSI[®] 150 HP, 5-speed manual transmission
- 1.4 TSI[®] 150 HP, 6-speed automatic transmission with Tiptronic[®]
- Maximum torque: 184 lb-ft at 1,400–3,500 rpm

Trendline includes:

- 15" steel wheels with full wheel covers and all-season tires
- 4-wheel ABS (Anti-lock Braking System)
- 60/40 split folding rear seats
- 6-way manually adjustable front seats
- Auxiliary input
- Bluetooth[®] mobile phone connectivity
- Body-coloured bumpers and door handles
- Cardholder (unless replaced by KESSY or KESSY Go)
- Chrome grille
- Composition Colour – 5" touchscreen radio with CD player and 1 SD card slot
- Cruise control
- Darkened tail lights
- Diversity antenna
- Driver & front passenger front & side airbags and front & rear Side Curtain Protection[®]
- Electronic Stability Control (ESC)
- Front and rear disc brakes
- Front and rear floor mats
- Front and rear interior lights
- Glove box
- Height-adjustable and telescopic steering column
- Interior décor: Black Grained
- LED rear licence plate illumination
- Multi-link rear suspension
- Plastic multifunction steering wheel with Piano Black accents
- Power door locks
- Power windows
- Rear seat head restraints for all seating positions
- Rearview camera
- Sunglasses holder
- Trip computer
- Vehicle immobilizer

Trendline+ (TL+)

Engines:

- 1.4 TSI[®] 150 HP, 5-speed manual transmission
- 1.4 TSI[®] 150 HP, 6-speed automatic transmission with Tiptronic[®]
- Maximum torque: 184 lb-ft at 1,400–3,500 rpm

Includes Trendline plus:

- Alarm system
- Front centre armrest
- Heatable front seats and washer nozzles
- Interior décor: Checkered Chrome
- Manual climate control
- Power adjustable, heatable, body-coloured exterior mirrors with turn signals
- Remote central locking system
- USB audio input

Optional equipment:

- Engine block heater
- Front fog lights

Connectivity Package

- App-Connect smartphone integration (Android Auto™, Apple CarPlay™, MirrorLink™)
- Composition Media – 6.33" touchscreen infotainment system with proximity sensor, CD player, 6 speakers, and 1 SD card slot
- SiriusXM[®] Satellite Radio

Comfortline (CL)

Engines:

- 1.4 TSI[®] 150 HP, 5-speed manual transmission
- Maximum torque: 184 lb-ft at 1,400–3,500 rpm
- 1.8 TSI[®] 170 HP, 6-speed automatic transmission with Tiptronic[®]
- Maximum torque: 184 lb-ft at 1,500–4,750 rpm

Includes Trendline+ plus:

- 16" Black Gloss alloy wheels with all-season tires
- 60/40 split folding rear seats with centre armrest and pass-through
- 8-way adjustable front seats including manual lumbar support
- App-Connect smartphone integration (Android Auto™, Apple CarPlay™, MirrorLink™)
- Automatic headlights with coming and leaving home function
- Chrome window trim
- Climatronic[®] dual-zone electronic climate control
- Composition Media – 6.33" touchscreen infotainment system with proximity sensor, CD player, 6 speakers, and 1 SD card slot
- Cooled glove box
- Front reading lights
- Interior décor: Two-tone Checkered Black with Chrome Accent
- Leather-wrapped multifunction steering wheel, shift knob and handbrake lever with Piano Black accents
- Power sunroof
- Rain-sensing wipers
- SiriusXM[®] Satellite Radio
- Soft-touch dashboard
- Upgraded cloth front comfort seats

Optional equipment:

- Engine block heater
- Front fog lights

Sport Package[†]

- 17" Salamanca alloy wheels with all-season tires
- Alloy pedals
- Ambient interior lighting
- Bi-Xenon headlights with Adaptive Front-light System (AFS)
- Front fog lights
- LED signature daytime running lights
- Multifunction trip computer
- Rear spoiler
- Sport suspension

Highline (HL)

Engine:

- 1.8 TSI[®] 170 HP, 6-speed automatic transmission with Tiptronic[®]
- Maximum torque: 184 lb-ft at 1,500–4,750 rpm

Includes Comfortline plus:

- 17" Lancaster alloy wheels with all-season tires
- 6-way power driver seat with manual lumbar support
- Ambient interior lighting
- Automatic headlights with coming and leaving home function
- Blind Spot Detection with Rear Traffic Alert
- Front fog lights
- HomeLink[®]
- Interior décor: Iridium Brushed
- KESSY – keyless access with push-start button
- Leather seating surfaces
- Leatherette door inserts
- Multifunction trip computer
- Piano Black accent surrounds for instrument cluster, gear shifter and radio
- Rain-sensing wipers

Optional equipment:

- Engine block heater

Technology Package

- Adaptive Cruise Control
- Bi-Xenon headlights with Adaptive Front-light System (AFS)
- Discover Media – 6.33" touchscreen infotainment system with proximity sensor, CD player, satellite navigation, and 2 SD card slots
- Fender[®] Premium Audio System – 8 speakers plus subwoofer
- Front Assist with Autonomous Emergency Braking
- LED signature daytime running lights

[†]Sport Package removes chrome window trim.



© 2015 Volkswagen Canada. Items, specifications, availability, standard features, options, fabrics and colours are subject to change without notice. Volkswagen Canada is not responsible for errors in typography or photography. Some features may be unavailable when your vehicle is built or available at extra cost. Although we endeavour to ensure that the information is accurate, as errors may occur from time to time, customers should contact their local Volkswagen dealer for details. Tires are supplied and warranted by their manufacturer. The vehicle is sold equipped with four all-season tires. However, please remember that the use of winter tires may be mandatory in your province or territory. Airbags are supplemental restraints only and will not deploy under all accident scenarios. Always use safety belts and seat children only in the rear seats, using restraint systems appropriate for their size and age. The navigation system depends upon signals from the GPS network and is designed to provide you with suggested routes only. Discrepancies may occur between the mapping and the actual location due to changes in street names, construction or other road system changes which are beyond the control of Volkswagen Canada. Please rely on your individual judgment in determining whether or not to follow a suggested navigation route. Fuel consumption ratings are estimates based on Natural Resources Canada's (NRCAN) fuel consumption criteria and testing methods for 2016 model year vehicles and are provided for comparison purposes only. Please note that comparisons to seemingly similar vehicles pre-2015 model year will show discrepancies due to the difference in NRCAN approved calculation methods for 2014 model year and older vehicles. Please refer to NRCAN's Fuel Consumption Guide 2016 for estimated fuel consumption figures. Actual fuel consumption will vary based on driving conditions, driver habits and the vehicle's condition, weight carried and additional equipment. "Jetta", "Climatronic", "TSI", "Trendline", "Comfortline", "Highline", "Volkswagen", "Das Auto & Design" and the Volkswagen logo are registered trademarks of Volkswagen AG. "Monster Mats" and "Side Curtain Protection" are registered trademarks of Volkswagen Group Canada Inc. The Bluetooth word mark and logos are registered trademarks of Bluetooth SIG, Inc. "SiriusXM", the SiriusXM logo, channel names and logos are trademarks of SiriusXM Radio Inc. and are used under licence. "Fender" is a registered trademark of Fender Musical Instruments Corporation. "Tiptronic" is a registered trademark of Dr. Ing. h.c. F. Porsche AG. "HomeLink" is a registered trademark of Johnson Controls Technology Company. "Android Auto" and "Google" are trademarks of Google Inc. "CarPlay" and "Apple" are trademarks of Apple Inc. "MirrorLink" is a trademark of Car Connectivity Consortium LLC. For further information regarding any Volkswagen model, please call 1-800 DRIVE VW or just look us up at vw.ca. Before we sign off, drive responsibly and obey the rules of the road. Version date: December 18, 2015.