

2023

PALISADE





Our best Palisade yet.

After being named a Best Family Car by Kelley Blue Book's KBB.com for the 3rd year in a row,¹ what's next for Hyundai Palisade? A bold new face framed by dazzling LED lights is just the beginning for our flagship SUV.

Everywhere you look, the redesigned 2023 Palisade is next-level premium. Small details, like the new Wi-Fi hotspot, offer big benefits. Hydrophobic glass is now available to repel water and dirt away from the front door windows, and a Full-Display Digital Rearview Mirror is also available for clear and unobstructed views at night – or when your Palisade is fully loaded.

Available in either 7- or 8-passenger seating configurations, the 3-row Palisade is also available with HTRAC All Wheel Drive on every trim level, so you can take on every road with added confidence. There's even a new Palisade XRT model that adds a rugged off-road attitude to your journeys.

Along the way, Hyundai SmartSense, our suite of advanced safety and driver-assist technologies, contributes to your peace of mind.²

Available features like the hands-free smart liftgate, Harman Kardon® premium audio system, wireless device charging and USB charge ports in every row add to Palisade's high-end approach. Even the way you park your Palisade is next-level convenient. A new Remote Smart Parking Assist feature on the 2023 Palisade Calligraphy lets you use your key fob as a remote control to effortlessly roll into or out of tight parking spots.³

The availability of cooling seat ventilation in the first two rows and heated seats in all three rows helps to ensure your crew's comfort all year long. So go ahead – refresh your family's playbook with the new 2023 Palisade. After all, it's your journey.



¹Award applies to 2020 – 2022 Hyundai Palisade model years. For more information, visit Kelley Blue Book's KBB.com. Kelley Blue Book is a registered trademark of Kelley Blue Book Co., Inc. ²Safety features vary by model. For details, refer to the Features chart in the back of this brochure or visit HyundaiUSA.com. ³Remote Smart Parking Assist (RSPA) can help remotely park the vehicle. However, several factors can impact RSPA performance. RSPA may not function correctly if one or more of the parking sensors is damaged, dirty or covered, or if weather conditions (heavy rain, snow or fog) interfere with sensor operation. Always inspect the parking area with your own eyes. See Owner's Manual for details and limitations.



PALISADE Calligraphy in Beige Nappa Leather

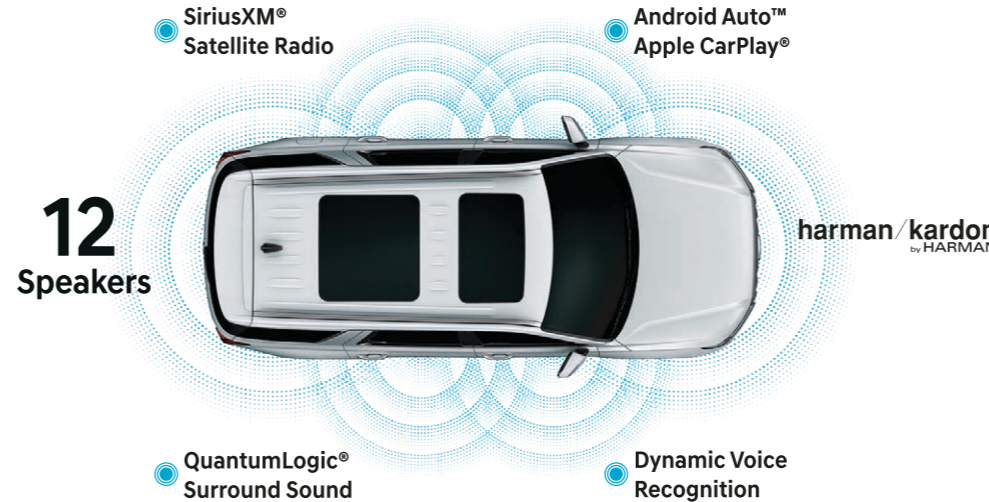
Drive the next icon of modern design.

The new 2023 Palisade interior raises the standards of modern design – literally. Take your seat inside, and the high seating position gives you a commanding view of the spacious cabin. Whether you’re in the driver’s seat, or seated elsewhere within Palisade, you’re at the intersection of design and technology.

All of the information the driver needs is presented within one continuous panel: There’s a large 12.3” high-resolution split-screen audio/navigation system to your right, and an available 12.3” digital instrument cluster front and center. Dynamic Voice Recognition is also at your command. Using conversational phrases, you can easily adjust climate, audio or navigation settings.¹ On Limited and Calligraphy models, a full-color Head-up Display can project critical driving data onto the windshield in fighter-jet fashion.

Settle into Palisade Calligraphy, and you’re surrounded by buttery-soft Nappa leather trim with a distinctive quilted pattern. Beneath you is luxurious heated and ventilated seating that extends from Calligraphy’s front seats to its 2nd-row captain’s chairs. Above you? An expansive dual sunroof that bathes the interior in natural light.

And whether your taste in music is modern or classical, the available Harman Kardon premium audio system uses QuantumLogic® Surround to create powerful, sparkling sound.²



2nd-row captain's chairs with wing-out headrests



Wide 12.3” touchscreen display



Full-Display Digital Rearview Mirror



12.3” digital instrument cluster



2nd-row side window sunshades

¹Speak in a normal voice and minimize background noise for best results. See Owner's Manual for details and limitations. ²Harman/Kardon and QuantumLogic are trademarks of Harman International Industries, Inc.



PALISADE Calligraphy in Moonlight Cloud

Drive your Palisade like it was made especially for you.

As a premium SUV, Palisade is designed to indulge. Take, for example, the way it responds to you on the road. With Drive Mode Select, you choose your Palisade's driving character. Want to enhance the dynamic feel of its steering, braking and acceleration? Turn the Drive Mode knob on the center console to Sport, and your Palisade sharpens its performance edge.

Want to take it easy? Select Comfort mode, and your Palisade instantly adjusts the engine, transmission and other systems for a smoother response. Choose Eco mode, and your Palisade is set up for peak fuel efficiency. Vehicles equipped with available HTRAC All Wheel Drive feature a Snow mode that calibrates traction for wintry driving conditions, and a new Tow mode that optimizes AWD acceleration for towing.

Whatever drive mode you choose, the power you feel pours from a smooth push-button 8-speed automatic transmission and innovative 3.8L GDI V6 engine that generates up to 291 horsepower. Palisade's versatility extends from a towing capacity of up to 5,000 pounds¹ to an EPA-estimated 27 MPG on the highway.² And the HTRAC AWD available with all trim levels also includes Downhill Brake Control, which helps maintain traction when you're descending an incline without having to press the brake pedal.³



HTRAC All Wheel Drive



Downhill Brake Control



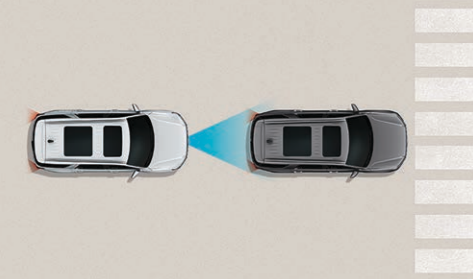
Shift-by-Wire push-button drive controls

This is your family's new safe space.

Rated an *IIHS TOP SAFETY PICK+*, Palisade uses Hyundai SmartSense technologies to help protect you from every angle. Forward Collision-Avoidance Assist scans the road ahead, detecting potential collisions with other vehicles, pedestrians or cyclists.¹ Lane Following Assist,² together with features like Blind-Spot Collision Warning³ and Safe Exit Assist,⁴ help monitor your Palisade's flanks. Behind you, a rearview camera and Rear Cross-Traffic Collision-

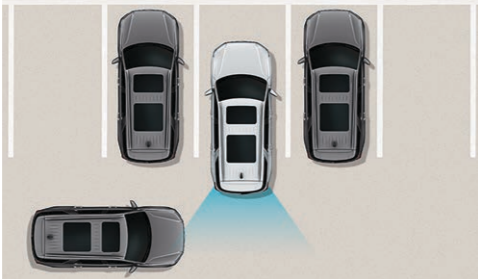
Avoidance Assist technology have your back.⁵ SEL Premium, Limited and Calligraphy models offer two more innovations: A Surround View Monitor that assists in managing tricky parking maneuvers,⁶ and a Blind-Spot View Monitor that helps negotiate lane changes by showing views of either blind spot on Palisade's instrument display after you activate the turn signal.⁷

Hyundai SmartSense Technologies



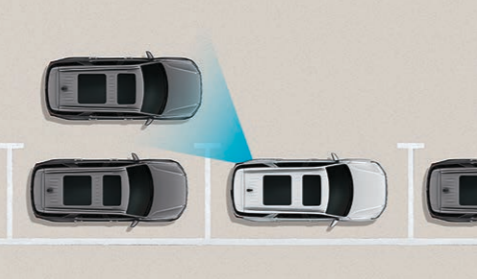
Forward Collision-Avoidance Assist

When the front-facing camera or radar detects a vehicle, pedestrian or cyclist in your path, or an oncoming car when you're turning left in an intersection, your Palisade warns of a potential collision. If necessary, the system will also apply emergency braking automatically to help avoid a collision.¹



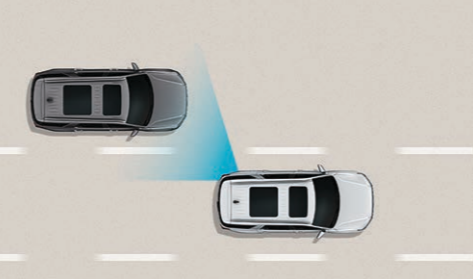
Rear Cross-Traffic Collision-Avoidance Assist

Backing out of a parking space and wondering if there's cross traffic? First, check the available Full-Display Digital Rearview Mirror. Once you are in reverse, Rear Cross-Traffic Collision-Avoidance Assist warns you of detected vehicles approaching from the side. If necessary, your Palisade automatically applies braking to help prevent a collision.⁵



Ultrasonic Rear Occupant Alert & Safe Exit Assist

An available ultrasonic sensor in the headliner scans for rear seat movement after you exit and lock your Palisade. If movement by a child or pet is detected, it sounds the horn, flashes its lights and sends an alert to your phone.⁸ Safe Exit Assist warns the driver if an approaching vehicle is detected alongside an opening door.⁴



Blind-Spot Collision Warning

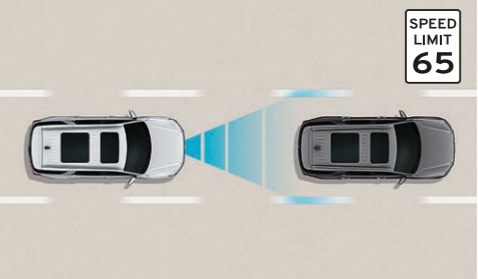
If your Palisade detects a vehicle in your blind spot while the turn signal is on, it issues an alert before you change lanes to help avoid a collision. It also monitors for vehicles approaching from behind to help prevent collisions when you are exiting a parallel parking spot.³



Blind-Spot View Monitor

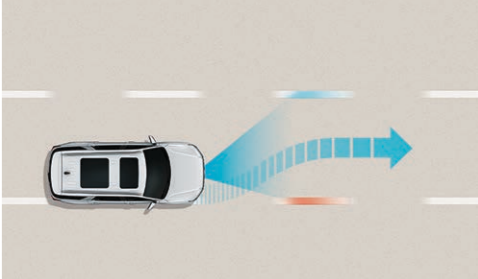


Surround View Monitor



Highway Driving Assist

Beyond helping to keep you centered in your lane at a safe cruising distance from the vehicle in front – while automatically adjusting for changing speed limits – Palisade can also reduce your cruise control speed automatically when entering a curve. On Palisade models equipped with Highway Driving Assist II, it can also assist with automatic lane changes in the direction indicated by your turn signal when it is safe to do so.⁹



Lane Following Assist

Using the front-view camera to detect lane markers on the pavement, this feature offers subtle steering corrections to help keep your Palisade centered in its lane. Your Palisade can also determine a virtual path based on the movements of the preceding vehicle.²



2022 Hyundai
PALISADE¹⁰



2022 Hyundai
PALISADE¹¹

¹ Forward Collision-Avoidance Assist with Pedestrian and Cyclist Detection is intended to be a supplement to safe driving practices. The system is not designed to detect certain stationary objects such as trees or poles, and may not detect all vehicles, pedestrians or cyclists under certain conditions. The system is a driver assistance system and is not a substitute for safe driving. The driver is responsible for being attentive and maintaining control of the vehicle, and should not wait for the system's alerts before braking as there may not be sufficient time to brake safely. See Owner's Manual for details and limitations. ² Lane Following Assist (LFA), when actively engaged with Smart Cruise Control or Highway Driving Assist, helps keep your vehicle centered in its lane when the lane markings are clearly visible on the road. Lane Following Assist will not work under all circumstances and will not prevent loss of control. Lane Following Assist is a supplemental assist, and does not replace the need for extreme care and attention by the driver. See Owner's Manual for details and limitations. ³ Blind-Spot Collision Warning (BCW) helps warn you of other cars in the blind-spot region to help prevent an unsafe lane change. It also helps prevent collisions when exiting parallel parking spots by alerting the driver to a potential hazard. Never rely exclusively on BCW as it is not a substitute for attentive driving. Always look over your shoulder and use your mirrors to confirm clearance. There are limitations to the function, detection, range and clarity of the system. BCW may not function correctly if one or more of the parking sensors is damaged, dirty or covered, or if weather conditions (heavy rain, snow or fog) are interfering with sensor operation. See Owner's Manual for details and limitations. ⁴ When parked, Safe Exit Assist (SEA) can alert occupants planning to exit the vehicle when another vehicle is detected to be approaching from behind. When child locks are active, SEA prevents the disablement of the child locks if a vehicle approaching from behind is detected. All doors must be closed for Safe Exit Assist to operate. Functionality is retained for 10 minutes after the ignition is turned off. Opening the door switches Safe Exit

Assist off. See Owner's Manual for details and limitations. ⁵ Rear Cross-Traffic Collision-Avoidance Assist (RCCA) is designed to notify drivers of approaching cross traffic behind their vehicle. When another vehicle is detected while you are backing out of a parking spot, it provides audible and visual display warnings and applies braking if it senses a collision is imminent. RCCA is active when the vehicle is in reverse gear and backing at a speed less than 6 mph. It only engages during the first activation of reverse gear from park and may not detect all vehicles, depending on the size, angle, distance and speed of the other vehicle. Never rely exclusively on RCCA. Always look over your shoulder and use your mirrors to confirm rear clearance. There are limitations to the function, detection, range and clarity of the system. See Owner's Manual for details and limitations. ⁶ The Surround View Camera System (SVCS) is a parking support system. The Surround View Monitor cannot completely eliminate blind spots, may not detect every object and does not warn of moving objects. Always check your surroundings before moving your vehicle. See Owner's Manual for details and limitations. ⁷ The Blind-Spot View Monitor (BVM) assists the driver in changing lanes by providing a live view of the blind spots on either side of the vehicle and an audible alert if another vehicle is detected. Turn signal must be activated, and other system limitations apply. Do not rely exclusively on BVM. It is the driver's responsibility to be aware of the surroundings and ensure it is clear before changing lanes or directions. See Owner's Manual for more information. ⁸ When the vehicle is parked and the engine has been turned off, Ultrasonic Rear Occupant Alert (UROA) can help alert the driver if it detects movement from a child or pet. Upon exiting and locking the vehicle, the UROA may provide visual, audible, and/or Bluelink alerts if the interior sensors detect movement. UROA is not a substitute for driver attentiveness. Never leave a child or pet unattended in a vehicle. Bluelink notification requires a properly equipped vehicle with an active Bluelink account. See Owner's Manual for details and limitations. ⁹ Highway Driving Assist (HDA) is for highway use only, can help maintain a safe distance from the vehicle ahead and help keep your vehicle centered in its lane when lane markings are clearly visible on the road. HDA should not be used in poor weather, heavy or varying traffic, or on winding or slippery roads. HDA will not work under all circumstances and will not prevent loss of control. Driver remains responsible to slow or stop the vehicle to avoid a collision. See Owner's Manual for details and limitations. ¹⁰ To qualify for 2022 TOP SAFETY PICK+, a vehicle must earn good ratings in the driver-side small overlap front, passenger-side small overlap front, moderate overlap front, side, roof strength and head restraint tests. It also must earn an advanced or superior rating for vehicle-to-vehicle and vehicle-to-pedestrian front crash prevention and come with standard acceptable- or good-rated headlights. For details, visit www.iihs.org. ¹¹ Government 5-Star Safety Ratings are part of the National Highway Traffic Safety Administration's (NHTSA) New Car Assessment Program (nhtsa.gov).



PALISADE Calligraphy in Beige Nappa Leather

Welcome to the latest hot spot.

Where's the latest hot spot where everyone wants to gather? With its new integrated Wi-Fi hotspot, it's the 2023 Palisade. A new Hyundai Digital Key 2 Touch lets you unlock the doors and start the engine using a compatible iPhone®, Apple Watch® or Samsung Galaxy® phone. Apple Wallet and Samsung Pass let you share your key with trusted friends and family members.¹

Piloting the Palisade Calligraphy? You'll want to take your spot in the Ergo Motion Driver Seat, which offers stretching and posture support for improved comfort with less fatigue on longer trips. The front legroom is exceptional – even greater than some full-size SUVs. Palisade's available heated 8-way power front seats are also available with ventilation and power lumbar support. Front and rear passengers will all appreciate dedicated climate control vents and a roof vent diffuser that quietly stream an evenly distributed flow of air.

Adding to the comfort in back, a Rear Seat Quiet Mode feature mutes the rear speakers for sleepy passengers. There's even a conversation mirror and available Passenger Talk in-car intercom that make it easy for the captain to speak to 3rd-row passengers from the flight deck.

Access to Palisade's 3rd-row seating is just as easy, thanks to one-touch sliding 2nd-row seats. Split-folding 2nd- and 3rd-row seats let you quickly reconfigure seating and cargo areas. The available 3rd-row power-folding seats can be controlled by a button in the rear cargo area – together with an available height-adjustable hands-free smart liftgate,² it opens your Palisade to endless possibilities.



Remote Smart Parking Assist



Wireless device charging

¹Not available with Palisade SE. Near Field Communication (NFC) Hyundai Digital Key 2 Touch requires a compatible iPhone®, Apple Watch® or Samsung Galaxy® phone. Not all Android, Apple or Samsung devices are compatible. Digital key sharing requires an active Bluelink account with Remote package. See your Owner's Manual for further details and limitations. Apple® is a registered trademark of Apple Inc. Samsung® is a registered trademark of Samsung Electronics Inc. ² The hands-free smart liftgate will open when your Proximity Key is within 3 feet of the detection area for at least 3 seconds. Radio transmitters and other vehicle smart keys may interfere with normal operation. Please consult your Owner's Manual for further details and limitations.



Hyundai Digital Key 2 Touch

With all Bluelink can do, your old vehicle will be green with envy.

To keep you plugged into your digital life on the go, Palisade features our Bluelink® Connected Car System, complimentary for your first three years.¹ Our MyHyundai app turns your compatible smartphone, smartwatch or Amazon Echo®/Google Home™ device into a Bluelink remote control that can unlock your Palisade's doors and start the engine and climate controls – including available heated and ventilated seats – before you walk out the door.²

The Bluelink Guidance package lets you use voice commands with Palisade's navigation system and download points of interest from your smartphone before slipping behind the wheel.⁵ The 12.3" touchscreen navigation display features a split-screen that lets you view both maps and music at a glance. Subscription-free traffic flow and incident data help alleviate the stresses of your commutes.

Starting your Palisade remotely³ or with the available Hyundai Digital Key 2 Touch (which now supports Apple's iPhone®)⁴ also tunes radio and navigation system presets using your Bluelink personal profile. Want to remotely check if you've left your doors unlocked or the lights on? Just consult your MyHyundai app.³

More good news – Apple CarPlay® and Android Auto™ come standard.⁶ And Bluetooth® music streaming lets you connect two phones to the audio system simultaneously. To keep everyone powered up without the clutter of cords, Palisade is available with a wireless charging pad that offers faster charging for 2023.⁷



Automatic Emergency Assistance

Bluelink Connected Care offers 24/7 SOS Emergency Assistance as well as Automatic Collision Notification that calls for help if you're in an accident where your vehicle's airbags deploy.⁸



On-Demand Diagnostics

Run vehicle diagnostics from your MyHyundai app, report issues at the press of a button, and receive Monthly Vehicle Health Reports or maintenance reminders by email.



Driver Profile Management

Save navigation searches, radio presets and your seating/mirror preferences to your Bluelink account – and they can be remotely updated and pushed to your Palisade.³



Remote Vehicle Controls

Use your smartphone, your smart speaker or wearable device to remotely start your Palisade's engine, unlock the doors, set the cabin's temperature, and much more.



Destination Send-to-Car

Use your smartphone to find restaurants or points of interest, then send them to Palisade's navigation system for access to driving directions the moment you slip behind the wheel.



Remote Vehicle Status

Wondering how much fuel is in your tank? If your Palisade's doors are unlocked? Your MyHyundai app knows the answers to these questions and more.



PALISADE Calligraphy in Moonlight Cloud

Interior Colors



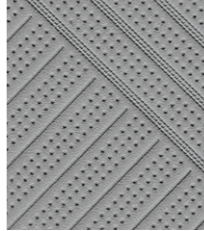
Black Cloth SE



Gray Cloth SE



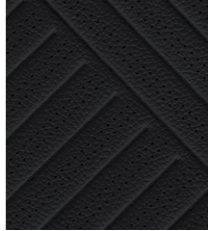
Black H-Tex™ SEL / SEL Premium



Gray H-Tex™ SEL / SEL Premium



Black H-Tex™ XRT only



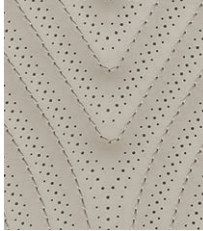
Black Leather Limited



Beige Leather Limited

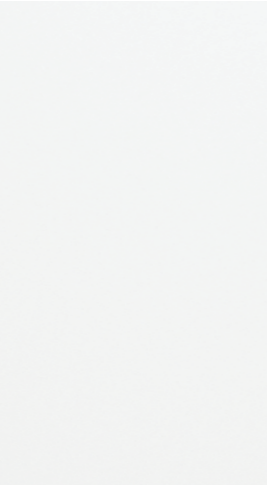


Black Nappa Leather Calligraphy



Beige Nappa Leather Calligraphy

Exterior Colors



Hyper White



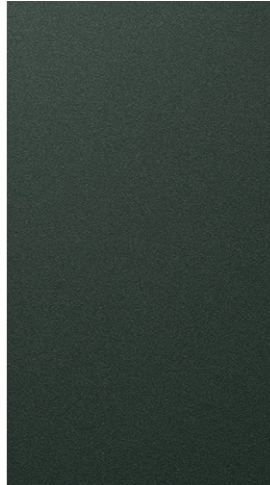
Typhoon Silver



Steel Graphite



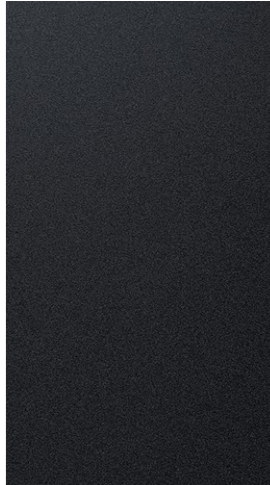
Sierra Burgundy



Robust Emerald Calligraphy only



Moonlight Cloud



Abyss Black

Wheels

18" Alloy Wheel SE / SEL



20" Alloy Wheel SEL Premium / Limited



20" Alloy Wheel XRT



20" Alloy Wheel Calligraphy



PALISADE
EPA MPG Estimates (City/Highway/Combined)⁹

19/27/22 MPG

FWD 8-speed A/T with SHIFTRONIC®

19/25/21 MPG

AWD 8-speed A/T with SHIFTRONIC®

¹2023 Palisade vehicles include three years of Bluelink Connected Care, Remote and Guidance (factory-equipped navigation required) packages. All trials require an active Bluelink subscription agreement subject to the Connected Services Terms and Conditions. Three-year term starts from the new vehicle date-of-first-use, is available for new vehicle purchases and leases, and is transferable to subsequent owners subject to the Terms and Conditions. Only use Bluelink and corresponding devices when safe to do so. Cellular and GPS coverage is required. Features, specifications and fees are subject to change. For details and limitations, visit HyundaiUSA.com or your authorized Hyundai dealer. ² Requires active Bluelink subscription with Remote package. Remote climate control available on properly equipped models with fully automatic temperature control. Remote stop only available when in remote start mode. Amazon, Alexa and all related logos and motion marks are trademarks of Amazon.com, Inc. or its affiliates. Google Assistant and Google Home are trademarks of Google Inc. ³ Requires active Bluelink subscription with Remote package. ⁴ 2023 Digital Key 2 Touch is compatible with Apple iPhone XR and later models, Apple Watch 5 and later versions, and Samsung Galaxy S20 and later models. ⁵ Requires navigation-equipped vehicle and active Bluelink subscription with Guidance package. ⁶ Apple is a registered trademark of Apple Inc. Android Auto™ is compatible with Android™ phones running Android 5.0 or higher. Android Auto may not be available on all devices. Additional apps may be required. Android and Android Auto are trademarks of Google LLC. ⁷ Qi wireless charging function is based on smartphone compatibility and/or specific accessory cases. ⁸ Bluelink agents will contact existing emergency service responders. ⁹ EPA estimates for comparison only. Mileage may vary. Your actual mileage will vary with options, driving conditions, driving habits and the vehicle's condition.

PALISADE
SE

3.8L GDI V6
Engine



291 262



Popular Features
Proximity Key entry with push button start
Wi-Fi hotspot
Blind-Spot Collision Warning
Rear Cross-Traffic Collision-Avoidance Assist
12.3" touchscreen navigation system and Highway Driving Assist
2nd-row manual temperature controls
Auto-dimming rearview and side mirrors

PALISADE
Limited

3.8L GDI V6
Engine



291 262



Popular Features
Wide dual sunroof with sliding sunshade
Premium door sill plates
Full color Head-up Display
Leather-trimmed seating surfaces
Driver's power thigh cushion extension
Heated 3rd-row seats
3rd-row power folding/reclining seats

Exterior & Interior Dimensions	PALISADE
Wheelbase	114.2 in
Overall Length	196.7 in
Overall Width	77.8 in
Overall Height	68.9 in
Headroom – front (with sunroof)	40.7 (39.3) in
Headroom – 2nd row (with sunroof)	40.1 (38.8) in
Headroom – 3rd row (with sunroof)	37.8 (37.2) in

PALISADE
SEL

3.8L GDI V6
Engine



291 262



Popular Features
Hyundai Digital Key 2 Touch and wireless device charging
Heated 8-way power front seats
7-passenger seating with 2nd-row captain's chairs
H-Tex™ seating surfaces
Leather-wrapped steering wheel
Hands-free smart liftgate with auto open
Roof side rails

SEL Premium Package

Auto-leveling rear suspension
Highway Driving Assist II
12.3" digital instrument cluster
Enhanced Forward Collision-Avoidance Assist features
Power tilt-and-slide sunroof
Harman Kardon® premium audio system with 12 speakers
Surround View Monitor and Blind-Spot View Monitor
Passenger Talk in-car intercom
Dual 3rd-row USB charge ports and 115-volt AC power outlet
Hydrophobic front door windows and acoustic rear side windows
Driver seat with 4-way lumbar support
Heated 2nd-row seats and heated steering wheel
2nd-row side window sunshades
Integrated Memory System for driver's seat and side mirrors
Ventilated front and 2nd-row seats
Parking Distance Warning – Forward
20" alloy wheels

SEL Bench Seat Option [requires Premium Package]

8-passenger 2nd-row bench seating (replaces captain's chairs)

HTRAC All Wheel Drive Option

HTRAC All Wheel Drive	AWD Lock
Downhill Brake Control	Snow & Tow modes

PALISADE
XRT

3.8L GDI V6
Engine



291 262



Popular Features
Rugged front and rear lower fascia
Rugged lower door garnish
Dark front grille finish
Black H-Tex™ seating surfaces
Black roof side rails and crossbars
Power tilt-and-slide sunroof
Dark 20" alloy wheels

PALISADE
Calligraphy

3.8L GDI V6
Engine



291 262



Popular Features
Exclusive grille and front bumper
Ergo Motion Driver Seat
Premium Nappa leather seating surfaces
Remote Smart Parking Assist
Full-Display Digital Rearview Mirror
Ambient interior lighting (adjustable – 64 colors)
Exclusive 20" alloy wheels

Exterior & Interior Dimensions	PALISADE
Legroom – front / 2nd row / 3rd row	44.1 / 42.4 / 31.4 in
Shoulder Room – front / 2nd row / 3rd row	61.2 / 60.8 / 55.2 in
Passenger Volume	155.3 cu ft
Cargo Capacity – behind front seats	86.4 cu ft
Cargo Capacity – behind 2nd row / 3rd row	45.8 / 18.0 cu ft
Total Interior Volume	173.3 cu ft

PALISADE

Power & Handling	SE	SEL	XRT	Ltd	Calli
291 hp / 262 lb-ft, 3.8L Atkinson Cycle GDI V6 engine with Idle Stop & Go	●	●	●	●	●
8-speed automatic transmission with SHIFTRONIC®	●	●	●	●	●
Paddle shifters and Shift-by-Wire push-button drive controls	●	●	●	●	●
Drive Mode Select	●	●	●	●	●
HTRAC All Wheel Drive with AWD lock, Downhill Brake Control and Tow & Snow modes	○	○	○	○	○
Auto-leveling rear suspension	–	●	–	●	●
Trailer pre-wiring with heavy-duty transmission oil cooler	●	●	●	●	●
Trailer Sway Control	●	●	●	●	●

Exterior Features	SE	SEL	XRT	Ltd	Calli
Exclusive grille and front bumper	–	–	–	–	●
Rugged front and rear bumper with skid plate accents	–	–	●	–	–
LED Daytime Running Lights	●	●	●	●	●
Low- and high-beam LED projector headlights	●	●	●	●	●
Automatic on/off headlights and High Beam Assist	●	●	●	●	●
LED taillights	–	●	●	●	●
Rear spoiler and bodycolor heated power side mirrors	●	●	●	●	●
Auto-dimming side mirrors with LED turn signal indicators	●	●	●	●	●
Satin chrome exterior door handles	●	●	–	●	●
Hydrophobic front door windows and acoustic rear side windows	–	●	–	●	●
Roof side rails	–	●	●	●	●
Power tilt-and-slide sunroof	–	●	●	–	–
Wide dual sunroof with sliding sunshade	–	–	–	●	●
Height-adjustable hands-free smart liftgate with auto-open	–	●	●	●	●

Interior Features	SE	SEL	XRT	Ltd	Calli
Proximity Key entry with push button start and key fob remote engine start	●	●	●	●	●
12.3" digital instrument cluster with selectable viewing modes	–	●	–	●	●
Full color Head-up Display	–	–	–	●	●
Ambient LED interior lighting (adjustable – 64 colors)	–	–	–	–	●
Leather-wrapped steering wheel	–	●	●	●	–
Two-tone leather-wrapped steering wheel	–	–	–	–	●
8-passenger seating (2 + 3 + 3)	●	○	–	–	–
7-passenger seating with 2nd-row captain's chairs and heated front seats	–	●	●	●	●
3rd-row power-folding/reclining seats	–	–	–	●	●
8-way power driver seat with 2-way lumbar support	–	●	●	–	–
8-way power driver seat with 4-way lumbar support	–	●	–	●	●
8-way power front passenger seat	–	●	●	●	●

Interior Features	SE	SEL	XRT	Ltd	Calli
Ergo Motion Driver Seat and 2nd-row wing-out headrests	–	–	–	–	●
Driver seat extendable thigh support	–	–	–	●	●
Integrated Memory System for driver's seat and side mirrors	–	●	–	●	●
H-Tex™ seating surfaces	–	●	●	–	–
Leather-trimmed seating surfaces	–	–	–	●	–
Premium Nappa leather seating surfaces	–	–	–	–	●
Microfiber suede headliner and quilted leather door panel inserts	–	–	–	–	●
Heated 2nd-row seats and heated steering wheel	–	●	–	●	●
Ventilated front seats and 2nd-row captain's chairs	–	●	–	●	●
Heated 3rd-row seats	–	–	–	●	●
2nd-row side window sunshades	–	●	–	●	●
Remote Smart Parking Assist	–	–	–	–	●
Full-Display Digital Rearview Mirror	–	–	–	–	●
Rear View Monitor with Parking Guidance	●	●	●	●	●
Navigation-based Smart Cruise Control with Stop & Go and Curve Control	●	●	●	●	●
Advanced Safety	SE	SEL	XRT	Ltd	Calli
Forward Collision-Avoidance Assist with Pedestrian/Cyclist Detection and Junction Turning Detection	●	●	●	●	●
Lane Keeping Assist and Lane Following Assist	●	●	●	●	●
Blind-Spot Collision Warning	●	●	●	●	●
Rear Cross-Traffic Collision-Avoidance Assist	●	●	●	●	●
Blind-Spot View Monitor and Surround View Monitor	–	●	–	●	●
Highway Driving Assist – HDA HDA II	● –	● ●	● –	– ●	– ●
Parking Distance Warning – Forward Reverse	– ●	● ●	– ●	● ●	● ●
Parking Collision-Avoidance Assist – Reverse	–	–	–	–	●
Driver Attention Warning and Safe Exit Assist	●	●	●	●	●
Rear Occupant Alert (door-logic system)	●	–	–	–	–
Ultrasonic Rear Occupant Alert	–	●	●	●	●
Audio & Connected Car Technology	SE	SEL	XRT	Ltd	Calli
12.3" touchscreen navigation system and SiriusXM® Satellite Radio	●	●	●	●	●
Harman Kardon® 12-speaker premium audio with QuantumLogic® Surround and Clari-Fi™ Music Restoration Technology	–	●	–	●	●
Hyundai Digital Key 2 Touch and wireless device charging	–	●	●	●	●
Android Auto™ and Apple CarPlay®	●	●	●	●	●
Wi-Fi hotspot and Over-the-Air Map Updates	●	●	●	●	●
Bluelink® Connected Car System	●	●	●	●	●
Passenger Talk in-car intercom	–	●	–	●	●
Dynamic Voice Recognition and Rear Seat Quiet Mode	●	●	●	●	●
Dual 3rd-row USB charge ports and 115-volt power outlet	–	●	–	●	●

● Standard ○ Optional ● SEL Premium Package – Not Available Ltd = Limited Trim Calli = Calligraphy Trim



Hyundai Hope On Wheels®

Helping Kids Fight Cancer Since 1998



Hope comes standard on every Hyundai.

Each time we sell a Hyundai, a portion goes to Hyundai Hope On Wheels® to help find a cure for childhood cancer. Over the last 24 years, Hyundai Hope On Wheels has donated more than \$200 million. Hope is our greatest feature. And it comes standard on every Hyundai. For more information, please visit HyundaiHopeOnWheels.org.



America's Best Warranty

POWERTRAIN
LIMITED WARRANTY

10 YEARS 100,000 MILES

NEW VEHICLE
LIMITED WARRANTY

5 YEARS 60,000 MILES

ANTI-PERFORATION
WARRANTY

7 YEARS UNLIMITED MILES

24/7 ROADSIDE
ASSISTANCE

5 YEARS UNLIMITED MILES



Hyundai
Complimentary
Maintenance

Complimentary maintenance includes Hyundai-approved oil and oil filter change (except for electric vehicles and fuel cell electric vehicles) plus tire rotation at normal factory-scheduled maintenance intervals for 3 years or 36,000 miles, whichever comes first. More frequent maintenance due to severe driving or conditions excluded. Offer valid only for new 2020-2023 Hyundai models purchased or leased on or after February 1, 2020. See your Hyundai dealer for further details and limitations.



Owner
Assurance

Our commitment to Hyundai owners does not end with the transfer of keys. Wherever the road takes you, we have got your back with Hyundai Owner Assurance, an umbrella of services and benefits that includes America's Best Warranty, 24/7 Roadside Assistance, innovative safety and car care features...and more.

See dealer for LIMITED WARRANTY details. Fuel economy estimated by EPA for comparison only. Mileage may vary. While the information contained in this brochure was correct at the time of printing, specifications and equipment can change. Feature comparisons based on competitor information available at the time of printing. No warranty or guarantee is being extended in this brochure, and Hyundai reserves the right to change product specifications and equipment at any time without incurring obligations. Some vehicles are shown with optional equipment. Specifications apply to U.S. vehicles only. Please contact your Hyundai dealer for current vehicle specifications. As part of Hyundai's commitment to a responsible environment, this brochure was printed using paper certified by the Forest Stewardship Council®. FSC® certification helps ensure that the highest social and environmental standards are met in the making of the paper we use, contributing to conservation, responsible management and community-level benefits for people near the forests.



©2022 HYUNDAI NP020S2023