

"AMILCAR"

AN ULTRA-SMART
PRODUCT OF CONTINENTAL EUROPE



1925

"AMILCAR"

AN ULTRA-SMART
PRODUCT OF CONTINENTAL EUROPE

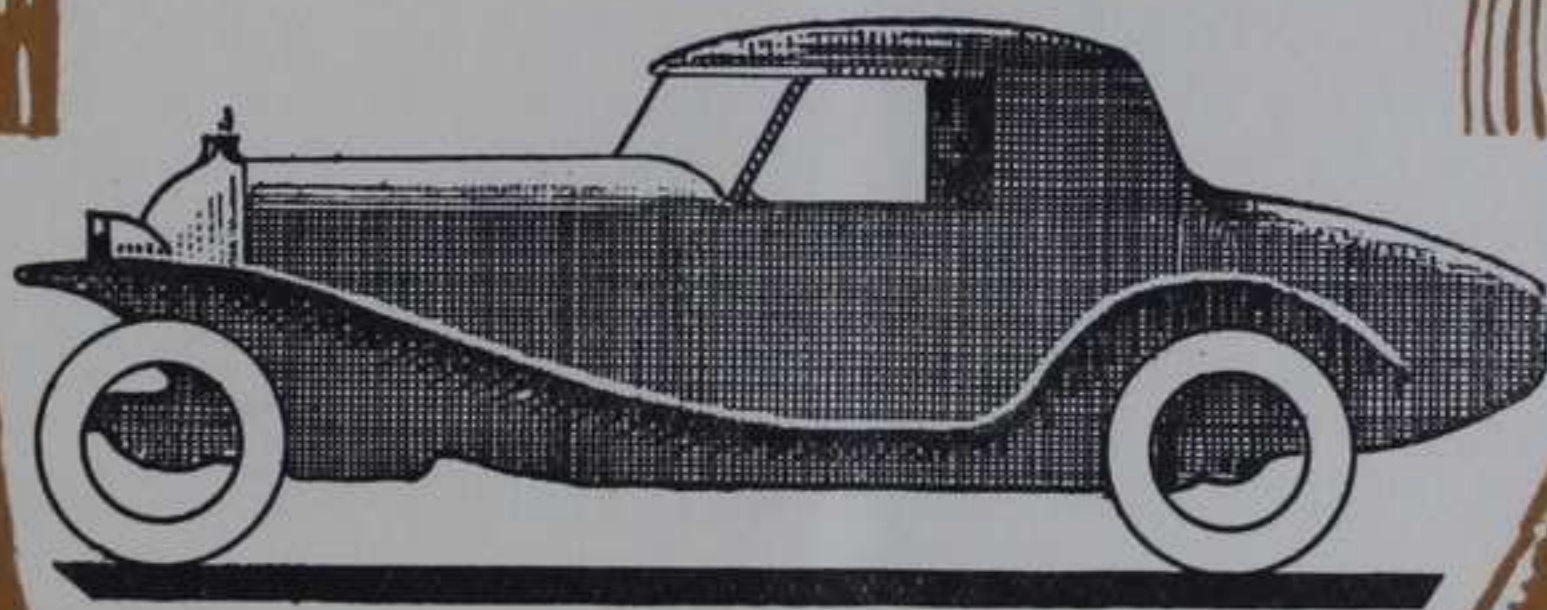


1925

AMILCAR

MAYBACH MOTOR COMPANY
253 WEST 57th STREET
NEW YORK
SOLE AGENTS FOR
NEW YORK STATE AND FLORIDA

INTRODUCING



**THE
AMILCAR**

AMILCAR

A FOREWORD

It

is apparent that a chassis strong enough to carry a five or seven passenger sedan, with its full complement of people, is not highly suitable for the much lighter weight of a two passenger roadster. To AMILCAR belongs the distinction of specializing on two seater cars... for those who require a light, fast, ultra smart, racy looking roadster or sport car, of unmatched performance, reasonable first cost and exceptionally low operating and upkeep expense.

“ Amilcar ” began the preparation of such a car in 1921.

They wanted an engine of unequalled performance, with a new standard of gas and oil economy. Therefore they designed and built a high-speed, small-bore power plant that would be capable of driving their car at more than 90 miles an hour. They subjected their engine to every conceivable bench and factory test, then mounted it on a chassis and put it to the trial of the race track. It immediately broke the world's speed record for cars with engines under 1.100 cubic centimetres.

But that was not enough. They turned their attention to chassis refinement. Weight, length, space, strength and quality of materials, springing and many other factors were all carefully studied. A completely new chassis for a two seater body *only* was designed. To thoroughly test their new chassis they started their cars in the famous road races of Europe. Mention is made here that the 1923 racing season brought to « Amilcar » 47 firsts, 3 seconds and 6 records — the 1924 season, 102 firsts, 9 seconds and 5 more records. An achievement unequalled in the history of motor-racing.

Finally “ Amilcar ” took as a model the engine and chassis that had been tested for nearly three years in gruelling track and road races, and produced their present standard sport cars — not modified from their successful race cars, but actual reproduc-

AMILCAR

tions, identical in design, construction, fineness of material and quality of workmanship.

They studied body design to the smallest detail. They wanted a long, low, comfortable sport-type series of bodies that would be worthy of their proven and finished chassis. The best of European designers were put to work on the job and now "Amilcar" offers to the sport loving motorist a series of fast two seater cars especially designed and constructed as two seater cars only.

And when it is considered that 32 HP. cars, with a road speed of 70 to 90 miles and hour according to the body type, are sold with a guaranteed gas consumption of 40 miles to the gallon, motorists that appreciate fine qualities in a car will see how well "Amilcar" engineers have done their work, what wise foresight in design, what care in construction have gone into the making of "Amilcar".

Embodying all that is latest in automobile design and construction "Amilcar" is a car of phenomenal and unmatched performance, with upkeep reduced to a minimum. Light, easy to handle and park, a delightful car to drive, ultra-smart, exceptionally fast and comfortable. Built by French engineers, to an ideal and not to a price, with all the aristocratic lines and sleekness that characterize a European production.



AMILCAR

CONDENSED SPECIFICATIONS

ENGINE. 32 HP. Four cylinders cast in block ; three point suspension ; new type detachable head with increased water space ; side by side valves ; bore 60 mm. (2.36 in.) ; stroke 95 mm. (3.74 in.)

CRANKSHAFT. Perfectly balanced, machined drop forging.

CAMSHAFT. Drop forged with specially designed cams for high speed.

LUBRICATION. Engine — high pressure to all crankshaft, connecting rods and camshaft bearings. Chassis — by pressure gun system to every external moving part.

COOLING. Water, circulated by thermo-syphon system. Tubular radiator with heavily nickeled cowl.

CARBURETOR. Solex.

IGNITION. Magneto.

STARTING & LIGHTING. Ducellior six volt two unit system.

STEERING. Irreversible worm and sector type. All parts bushed.

GEAR BOX. Three speeds, forward and reverse type, selective sliding gears ; central control.

FRONT AXLE. Chrome molybdenum steel ; H section between springs for static load ; oval section towards the swivel jaws to withstand the torsion strain and reaction of front wheel braking.

FINAL DRIVE. Banjo back axle, spiral bevels. A torque tube takes the driving thrust at its front end, with a ball race fitted midway along its length to support the cardan shaft and to prevent whip.

CLUTCH. Three metal plates in oil.

BRAKES. Foot — "Amilcar" patent four wheel brakes. Hand — acting on all four wheels. All brake drums self cooling.

SPRINGS. Chrome vanadium steel ; front — semi-elliptic ; back — half-cantilever ; Shock absorbers fitted front and rear.

WHEELS. Rudge-Whitworth detachable wire wheels, fitted on splined hubs and locked by a ring nut.

AMILCAR

A FEW OF ITS NOTEWORTHY FEATURES

A car built for the motorist that wants a two seater car — and designed solely as a two seater; no unnecessary weight to haul.

No thrashing of the back wheels on bad roads. Good riding and perfect traction under all speeds and conditions.

Ease of driving. Long journeys and heavy traffic produce no sense of strain or fatigue.

A long, low car that hangs to the road at all speeds with no side sway or oscillation.

A car with phenomenal acceleration insuring quick get-a-way. De-celeration equally as quick; a big factor for safe driving.

A guaranteed road speed of 70 to 90 miles an hour, according to the type of body fitted.

A 32 HP. vibrationless, flexible engine; power in excess to conquer any hill.

A motor and chassis which has been thoroughly tested in track and road races. In this respect "Amilcar" triumphs are unparalleled.

Positive four wheel brakes that for simplicity of adjustment are unexcelled. Brakebands that are self-cooling; no more binding or burnt out linings.

Long, flat-leaf springs with shock absorbers fitted all round.

Engine, chassis and body handbuilt throughout.

Clean design; every part easily accessible for adjustment.

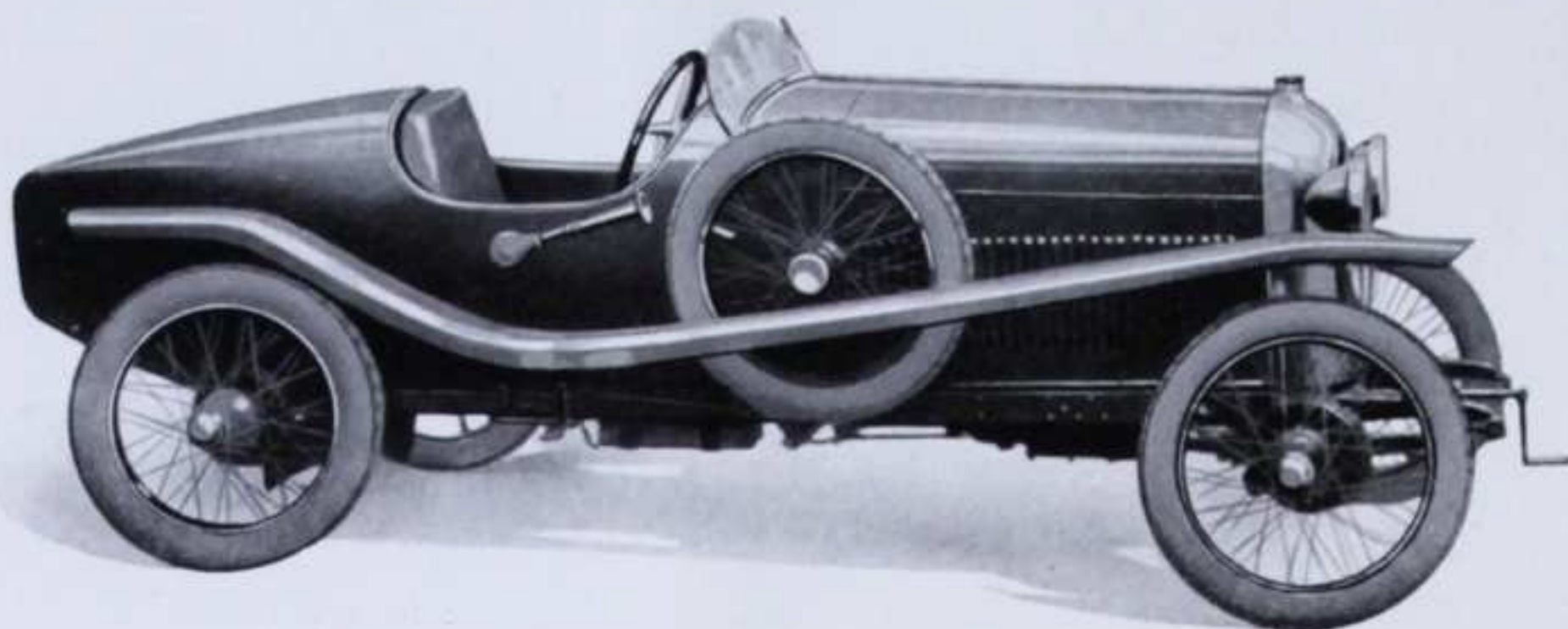
Modern equipment that includes all a driver requires.

GUARANTEED GASOLINE CONSUMPTION OF 40 MILES TO THE GALLON.

Tyre mileage and oil consumption in proportion.

EVERY "AMILCAR" IS GUARANTEED FOR SIX MONTHS against defects in material or construction.

AMILCAR



ILLUSTRATING THE OPEN SPORT CAR.



AMILCAR

OPEN SPORT CAR SERIES

OFFERED IN FOUR BODY TYPES



The four body types of the open sport car series are all similar in actual design, which follows the generally accepted race track body shape, producing a long stream line effect. Low, neat and slim, this type of body has become exceedingly popular with sport cars on the continent.

All four types are hand-made coach-built bodies, the handiwork of French craftsmen. They are upholstered in genuine leather and the fittings and equipment are of the best.

For this series a road speed of 75 miles per hour and a gas consumption of 40 miles to the gallon are guaranteed. Smaller wheels and full-size balloon tyres fitted at no extra cost, but standard-size tyres are recommended for the open car models.

Series

XCA.	Two seater painted in Royal Blue and Red.	\$ 1850
XCB.	Two seater aluminium body, natural finish.	\$ 1975
XXA.	Similar to XCA but with accomodation for three people	\$ 1925
XXB.	Similar to XCB but with accomodation for three people	\$ 2050
XXD.	Chassis only.....	\$ 1650

SPECIAL NOTE. — All prices quoted in this catalog are for cars landed on the Docks New-York, Boston, Philadelphia or New Orleans and include Ocean freight, Landing charges and U. S. Customs Duty. Freight in U. S. and Government Tax extra. These prices remain in effect until further notice.

Paris, 1st January, 1925.

AMILCAR



ILLUSTRATING THE CLOSED SPORT CAR.



AMILCAR

CLOSED SPORT CAR SERIES

FOR TWO PASSENGERS ONLY



Knowing that closed car bodies add extra weight to the chassis, "Amilcar" has avoided this by constructing all closed car bodies of aluminium instead of steel.

It is a car that attracts attention and admiration wherever it is seen — the centre of attraction at the last Paris Automobile Salon. The product of experienced coachbuilders, hand made, upholstered and fitted with the best quality of materials. Finished in any color or color combinations, it embraces all that is smart in body design on the continent.

We would like our patrons to understand that the closed car is not stocked as a standard model, each one being built to individual orders — consequently any variation of design or idea from the illustrated model may be incorporated at the wish of our clients.

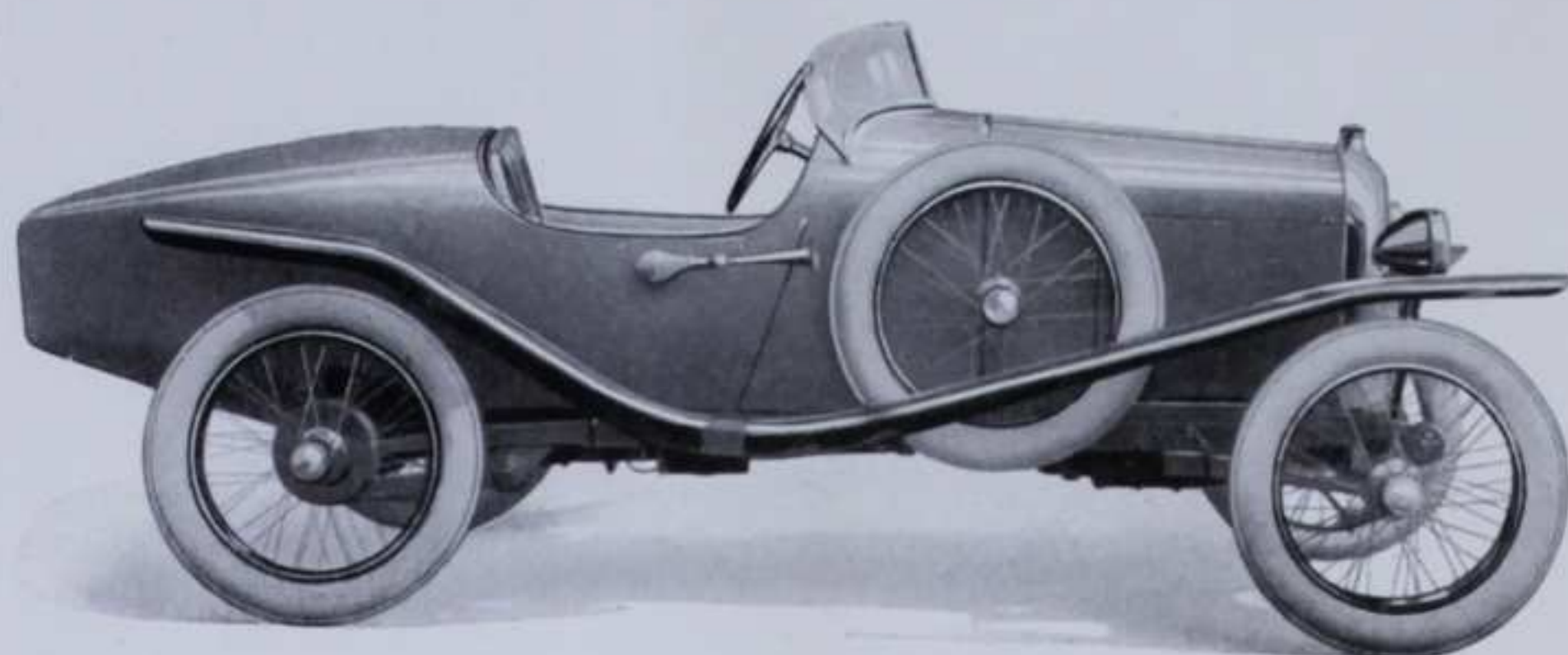
For the closed car models a road speed of 70 miles an hour and a gas consumption of 40 miles to the gallon are guaranteed. Four wheel brakes, shock absorbers, Rudge-Whitworth wire wheels and "Michelin" full size balloon tyres fitted as standard equipment.

Series

—		
XXC.	Closed sport car as illustrated	\$ 2750
XXD.	Chassis only	\$ 1650



AMILCAR



ILLUSTRATING THE OPEN SMALL SPORT CAR.



AMILCAR

OPEN SMALL SPORT CAR SERIES



OFFERED IN TWO BODY TYPES

To

enable their cars to race under the 1000 cubic centimetre or "one litre" class, „Amilcar" has built a smaller sport model chassis exactly following the lines of their larger car. The same design and construction is used with a 24 HP. in place of the standard 32 HP. engine. Front axle and springing are different as front wheel brakes are not fitted on the 24 HP. series.

The bodies are of the same design. type, material and construction as the 32 HP. series. This smaller model, although not quite so fast, is lighter and more economical than the bigger car.

With the 24 HP. series a road speed of 65 miles an hour and a gas consumption of 45 miles to the gallon are guaranteed.

Series

YCA.	Two seater, painted in light blue and black.	\$ 1500
YCB.	Two seater aluminium body, natural finish.	\$ 1625
YCD.	Chassis only	\$ 1300

SPEED MODELS

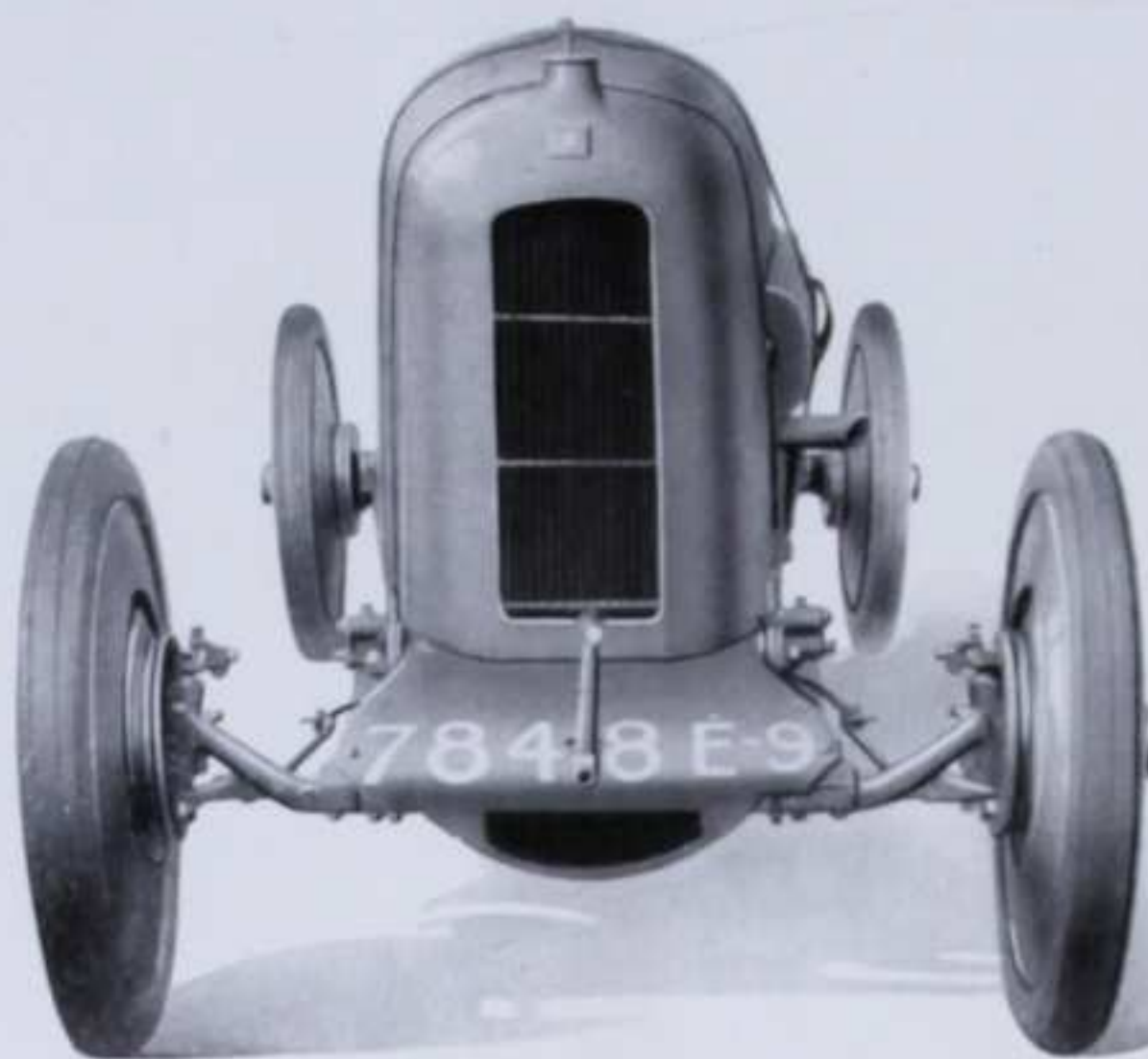


Series

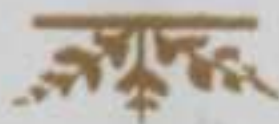
XCC.	On standard 32 HP. chassis with special race type body. Guaranteed road speed of 90 miles an hour.....
ZCD.	In process of manufacture. This series is designed for the higher speeds of track and road races for cars with engines under 1100 ccs. and will be capable of at least 120 miles an hour

PRICES OF THESE TWO SERIES ON APPLICATION

AMILCAR



A SINGLE SEATER RACING AMILCAR
ON THE STANDARD 32 H.P. CHASSIS.



AMILCAR

A FEW OF ITS NOTABLE VICTORIES



- 1st Grand Prix du Parc à Dijon ;
(Record).
- 1st Grand Prix de l'A. C. P. A. ;
(Record).
- 1st Grand Prix du Mans ;
- 2nd Grand Prix de Lyon ;
- 1st Bol d'Or Automobile ;
(Worlds Record).
- 1st }
2nd } Circuit du Loiret ;
- 1st Circuit des Routes Pavées ;
- 1st Concours d'Endurance ;
- 1st Côte de l'A. C. Bordelais ;
- 1st }
3rd } Le Grand Prix du Midi ;
- 2nd Grand Prix d'Endurance de 24 Heures ;
(Circuit du Mans).
- 1st Le Grand Prix du M. C. de Marseille ;
- 1st }
2nd } D'Inauguration de Miramas autodrome.

RESUME :

1922	1923	1924
22 firsts.	47 firsts.	102 firsts.
4 seconds.	3 seconds.	9 seconds.
3 records.	6 records.	5 records.
2 worlds records.		1 worlds record.



HALL & COLLINS

Exporters of fine automobiles

10, Avenue Victor-Emmanuel III

PARIS (VIII^e)

FRANCE



Sole Concessionnaires for Amilcar

In North America & Cuba



IMP. E. DESPOIS

PARIS

MAYBACH MOTOR COMPANY

253 WEST 57th STREET

NEW YORK

SOLE AGENTS FOR

NEW YORK STATE AND FLORIDA

