

---

**THE** *New* **LINCOLN - ZEPHYR** *Continental Club Coupe*

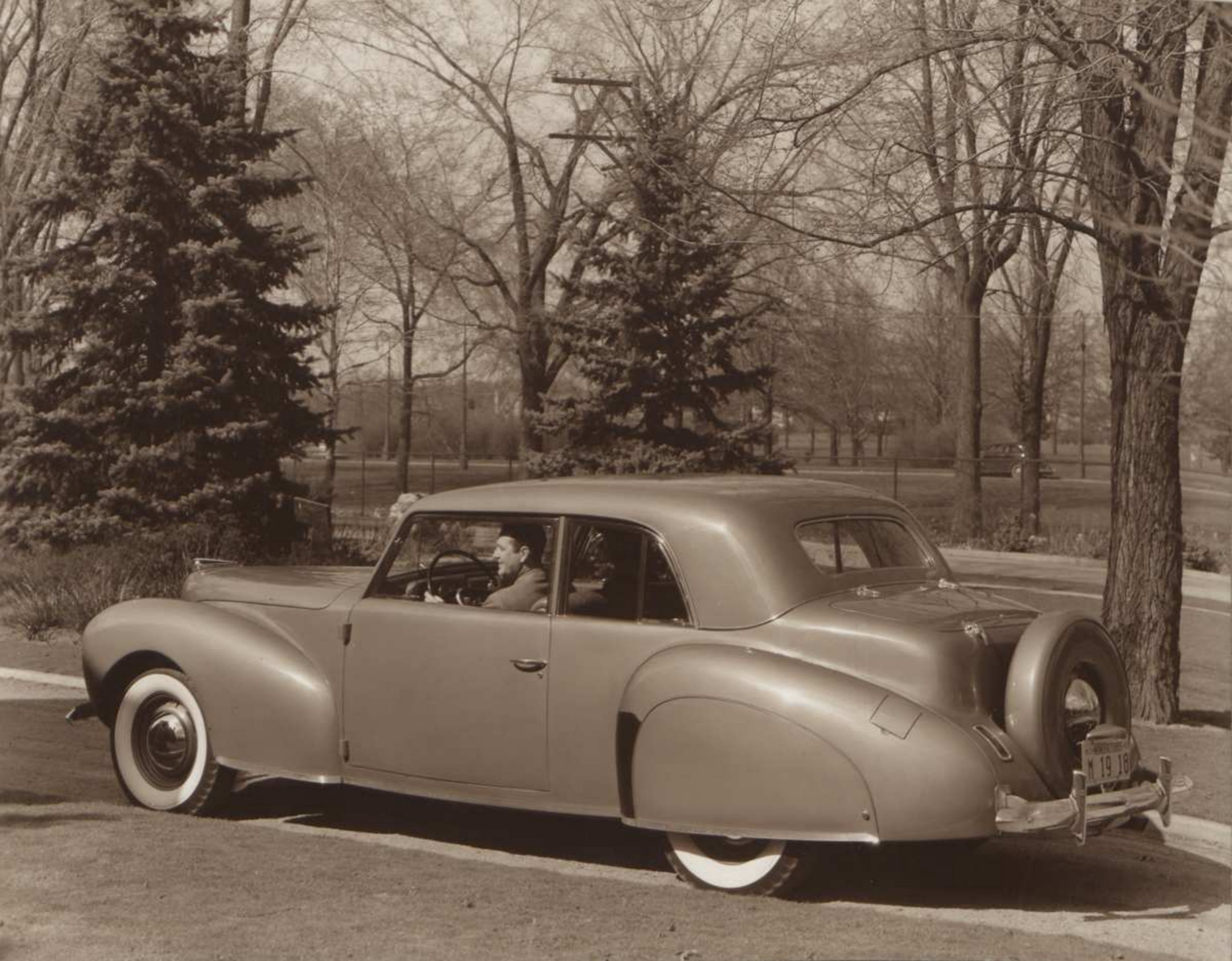
---

1940 1/2











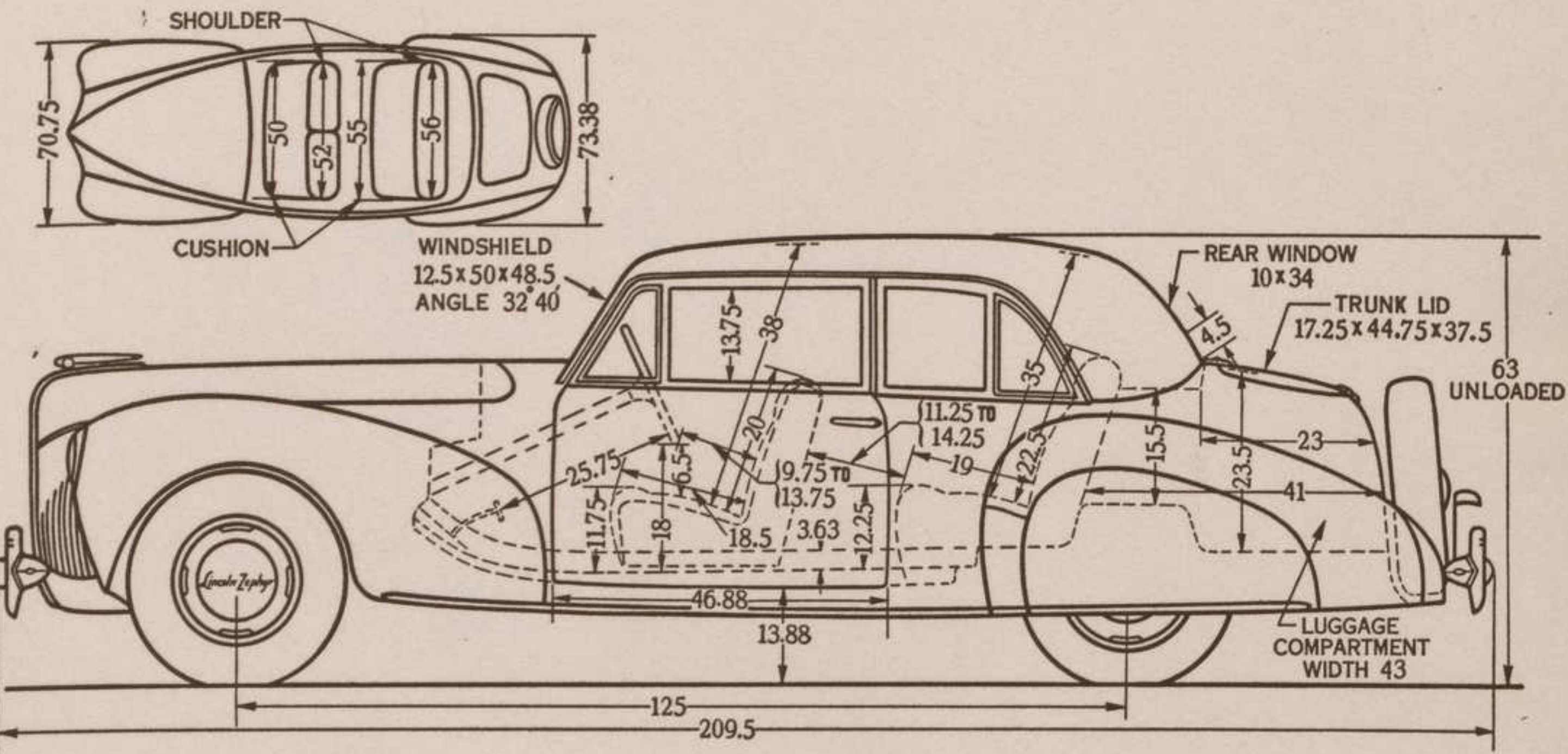








**THE LINCOLN-ZEPHYR CONTINENTAL CLUB COUPE**





## THE LINCOLN-ZEPHYR CONTINENTAL CLUB COUPE

**L**AST FALL the car which probably created the greatest interest at automobile shows was the Lincoln-Zephyr Continental Cabriolet—a long, fleet convertible that was young, gay and sophisticated. ¶ Now Lincoln-Zephyr introduces a companion closed car, the **CONTINENTAL CLUB COUPE** which is illustrated in this portfolio. Many of the interesting details of this car are noted below.

---

**HOOD** is seven inches longer and three inches lower than other Lincoln-Zephyrs.

**LUGGAGE COMPARTMENT** is exceptionally large.

**SPARE TIRE and WHEEL** are carried outside. Metal tire cover, painted to match the body, is furnished.

**INSTRUMENT PANEL.** Speedometer and other dials are especially designed for use on this body type and the Continental Cabriolet—two large dials instead of one. Panel is finished in mahogany-color metallic enamel.

**GARNISH MOLDINGS,** steering column and brake lever are finished in mahogany-color metallic enamel.

**STEERING WHEEL** and all knobs are ruby-colored plastic.

**INTERIOR FITTINGS.** Door handles, window regulators and grille for radio speaker have a gold-colored macoid finish.

**ASH TRAYS.** One on instrument panel, two in rear compartment.

**LIGHTERS.** Snap-out type lighter in the instrument panel and another in rear compartment.

**FOOT RAIL** is provided in rear compartment.

**FOLDING ARM REST** is provided in center of rear seat.

**UPHOLSTERY.** A combination of Whipcord and leather is available using Whipcord (Z-160) with a choice of four leathers in colors—Green, Tan, Red, or Black; Custom Tan Broadcloth is used for headlining. Custom Broadcloth combinations—Maroon, Blue, or Green, are also available as optional; headlining and sidewalls in light color, seat cushions and seatbacks in darker color. Custom Tan Broadcloth is also available as optional. Carpets and bindings are furnished to harmonize with all combinations.

**UPHOLSTERY DESIGN.** A special bolster and pipe design is used for all upholstery combinations in this body type. Pippings are spaced at 8 inches.

On the leather and whipcord combination, the bolster at the front of the cushion and the bolster at the top of the seat back will be leather.

**BODY COLORS** available as standard are: Tropical Sand, Burgundy Red, Arden Green, Beetle Green, Capri Blue, Zephyr Blue, Dove Grey and Black. There is an additional charge for white sidewall tires.

**ENGINE.** V-type, 12 cylinders, 120 horsepower. Cylinder heads and intake manifold are brightly polished aluminum. Polished acorn nuts are used on cylinder heads.

*Our policy is one of continuous improvement, and we reserve the right to change specifications, design or prices without incurring obligation. Cars illustrated in this folder show white sidewall tires, available at extra charge. Lincoln Motor Car Division—Ford Motor Company*