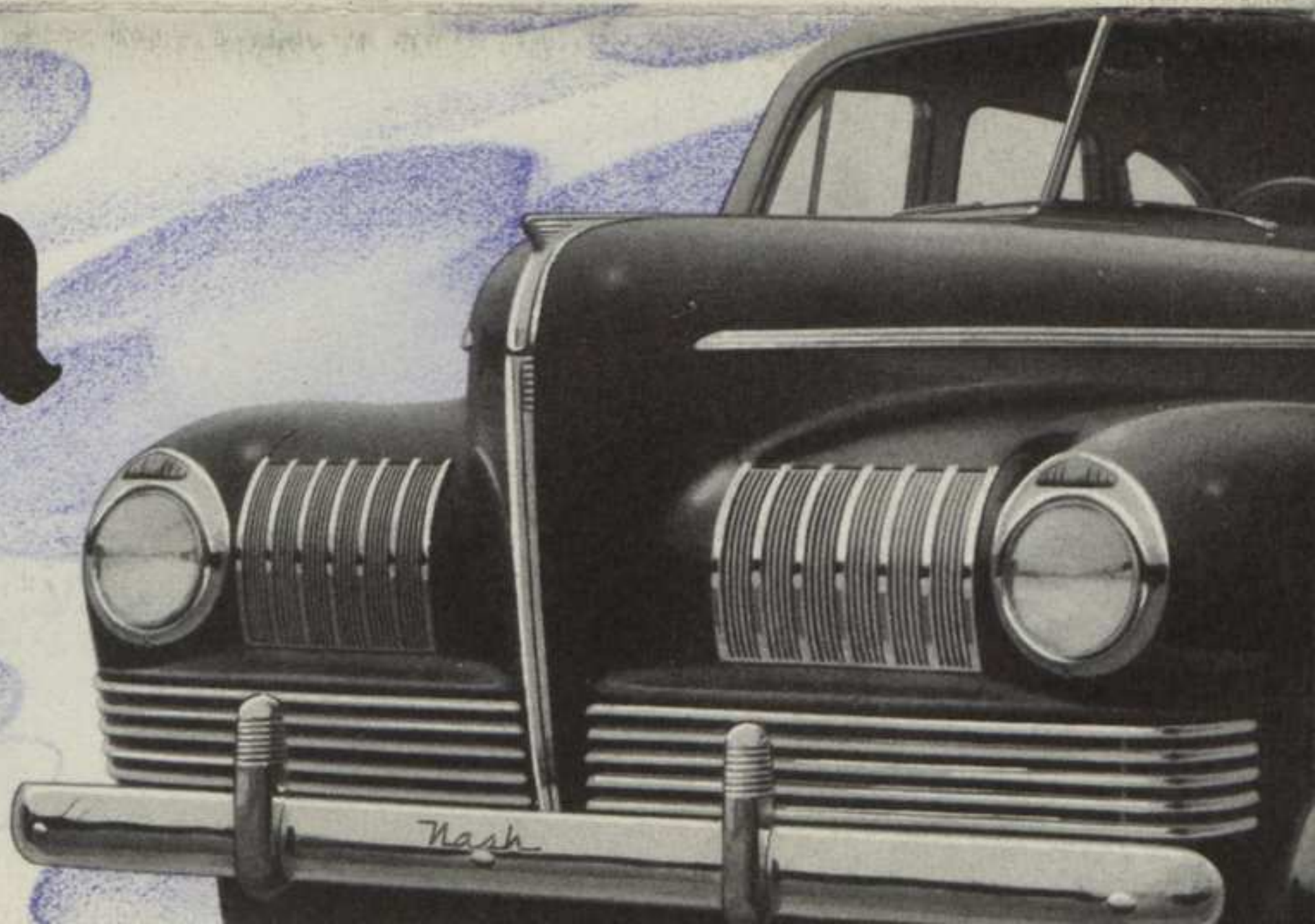


Three Revolutionary New Cars
with new Lower Prices
Starting in the Lowest Price Field

LITHO IN U.S.A. F-3550

¹²⁰⁰
Nash
for
1941



3 Series

FIVE ROOMY STYLES . . . 17 BEAUTIFUL MODELS ★

AN endless parade of new engineering marvels . . . that only a great independent like Nash would dare introduce. A new measure of value that's impossible to scale in terms of present-day standards! Revolutionary cars . . . more modern than their time!

There you have the new 1941 Nash!

Get behind the wheel and let a smooth, silent, surge of "Flying Scot" power carry you away on wheels that feather their way over the highways and byways to new adventure!

Enjoy the new kind of soft, coil spring ride, on ALL FOUR WHEELS! The new kind of comfort seating that rests your back and body! The new kind of roominess (three fit comfortably in front and three in the rear) made possible by a new type of "UNITIZED" body-frame construction that's lower yet provides ample headroom . . . stronger and safer yet eliminates hundreds of pounds of useless weight! The handy convertible bed and amazing Weather Eye!

Wake up to find that your new companion . . . so much fun to be with . . . is also more considerate of your pocketbook than any other fellow traveler in your experience!

Switch to Nash this year and add its revolutionary savings to your yearly income!



NASH—A new kind of lowest-price car that saves you money every mile!



THE COUPE BROUGHAM AND BUSINESS COUPE

Shown here . . . the new low-priced Nash Ambassador "600" Coupe Brougham. This body type also available in the Aeropowered Ambassador Twin Ignition Six and Eight. The Business Coupe . . . same exterior as above . . . is available in new Ambassador "600" (special or de luxe appointments) and Aeropowered Ambassador Six.

Sketches below show typical seating arrangements only . . . for upholstery, trim and appointment details see "Standard" Equipment" specifications at bottom.



THE SEDAN INTERIOR—Every cubic inch of space serves a functional purpose in the roomy lounge interiors of this most popular of all body styles as it is interpreted by Nash in 1941. Available in Ambassador "600," Ambassador Six and Ambassador Eight in both the Fast Back and Trunk Back models.



THE POPULAR FAST BACK SEDAN

Shown here . . . the Aeropowered Nash Ambassador 105 H. P. Twin Ignition Six Fast Back Sedan. This body type is also available in the thrilling new low-priced Ambassador "600" with either the special or de luxe appointments . . . and in the beautiful Aeropowered Ambassador Twin Ignition 115 H. P. Eight with the luxurious de luxe appointments.

THE COUPE BROUGHAM—This currently popular all-purpose body style has full width comfort seats both front and rear and an oversize luggage compartment behind. Available in all three series of the brilliant 1941 Nash . . . the new Ambassador "600," the Ambassador Six and the Ambassador Eight.



THE BUSINESS COUPE—Ample luggage space behind the seat and oceans more behind the partition separating the passenger compartment from the carry-all luggage space in the rear features this "professional man's special." Available in the Ambassador "600" series with special or de luxe appointments . . . and in the Ambassador Six with de luxe equipment.

CONVERTIBLE COUPE WITH AUTOMATIC TOP

Shown here . . . the Aeropowered Nash Ambassador Twin Ignition Six Convertible Coupe powered by America's finest 105 H. P. Valve-in-Head Engine. This body type also available in the Aeropowered Twin Ignition 115 H. P. Ambassador Eight. Although not illustrated . . . the NEW STATION WAGON will be available in the Ambassador Six and Eight.



THE TORPEDO-TYPE TRUNK BACK SEDAN

Shown here . . . the Aeropowered Nash Ambassador Twin Ignition Eight 4-Door Torpedo-Type Trunk Back Sedan . . . 115 H. P. Valve-in-Head Engine . . . the lowest-priced luxury car ever offered. This body type also available in the sensational new low-priced Ambassador "600" with de luxe appointments and distinctive 105 H. P. Twin Ignition Ambassador Six.



LOOK at all you get as STANDARD EQUIPMENT!

NASH AMBASSADOR SIX

The Ambassador Six is available in the following body styles: 4-Door Trunk Sedan; 4-Door Fast Back Sedan; Coupe Brougham; Business Coupe; Convertible Coupe; Station Wagon available later.

STANDARD EQUIPMENT

ALL AMBASSADOR SIX MODELS . . . Hi-Test Safety glass, dual windshield wipers and sun visors, dual horns, assist cords in sedans and coupe brougham, robe cord in sedans, front door arm rests, front compartment ash tray, rear seat ash tray in sedans, No-Draft ventilation, ventilating rear quarter windows in sedans and coupe brougham, cloth or Canda Cloth optional, Foam Sponge seat cushions in Torpedo sedan, dome light in sedans and coupe brougham, glove box door lock, rotary door locks, automatic choke, voltage control generator, Sealed Beam headlights, bumpers and bumper guards, spare wheel and tire.

NASH AMBASSADOR "600"

DE LUXE MODELS available in the following body styles: 4-Door Trunk Sedan; 4-Door Fast Back Sedan; Coupe Brougham; Business Coupe.

SPECIAL MODELS available in: 4-Door Fast Back Sedan; Business Coupe.

STANDARD EQUIPMENT

DELUXE 4-DOOR TRUNK SEDAN . . . Hi-Test Safety glass, dual windshield wipers and sun visors, horn, assist cords and robe cord, front door arm rests, chrome instrument panel trim and speaker grille, instrument panel ash tray, rear seat ash tray, glove box door lock, No-Draft ventilation, ventilating rear quarter windows, rotary door locks, Sealed Beam headlights, dome light, voltage control generator, bumpers and bumper guards, spare wheel and tire.

ALL OTHER DE LUXE MODELS . . . Hi-Test Safety glass, bumpers, bumper guards, windshield wiper, sun visor, horn, instrument panel ash tray; rear seat ash tray, robe cord and assist cords in sedans only; dome light in sedan and coupe brougham, No-Draft ventilation, chrome radio speaker grille, glove box door lock, rotary door locks, Sealed Beam headlights, voltage control generator, spare wheel and tire.

ALL SPECIAL MODELS . . . Hi-Test Safety glass, bumpers, wiper, visor, horn, No-Draft ventilation, rotary door locks, glove box door lock, dome light in sedan, Sealed Beam headlights, voltage control generator, spare wheel and tire.

NASH AMBASSADOR EIGHT

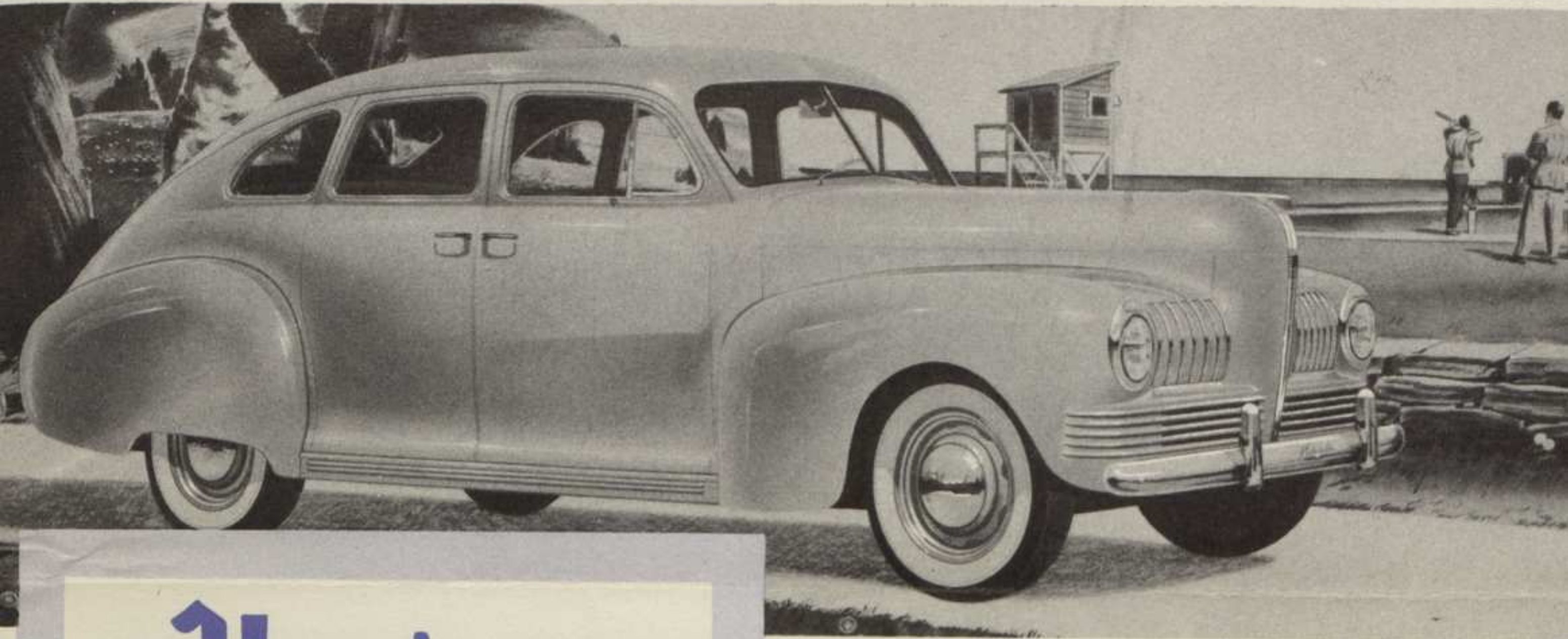
The Ambassador Eight is available in the following body styles: 4-Door Trunk Sedan; 4-Door Fast Back Sedan; Coupe Brougham; Convertible Coupe; Station Wagon available later.

STANDARD EQUIPMENT

ALL AMBASSADOR EIGHT MODELS . . . Hi-Test Safety glass, dual windshield wipers and sun visors, dual horns, spring type assist cords in sedans and coupe brougham, robe cord in sedans, front door arm rests, rear seat center arm rest in Torpedo sedan, front compartment ash tray, dual rear seat ash trays, No-Draft ventilation with safety locks, ventilating rear quarter windows in sedans and coupe brougham, Foam Sponge seat cushions, cloth or Canda Cloth optional, dome light in sedans and coupe brougham, glove box door lock, chrome along lower edge of doors, rotary door locks, automatic choke, voltage control generator, Sealed Beam headlights, bumpers, bumper guards, spare wheel and tire.

TORPEDO-Styling AT ITS Roomiest Best

OR PEOPLE WHO WANT TO GO PLACES . . . SEE THINGS . . . AND SAVE MONEY



Here's a New Kind of Car!

THINK OF IT! A BIG, FULL-SIZE CAR THAT OFFERS . . .

- 25 to 30 miles per Gallon of Gasoline . . . well over 500 miles on a single tankful.
- Flashing Pick-up of new "Flying Scot" engine
- More Room than Cars Costing up to \$200 more
- A Coil Spring Ride on ALL FOUR WHEELS
- NEW Torpedo-Type "Unitized" Steel Body
- Improved Weather Eye Conditioned Air System . . . and Convertible Bed
- Over-all Savings up to \$100 a Year

ONE look is all that's necessary to give you a "let-me-get-my-hands-on-the-wheel" feeling . . . that simply won't be denied!

One ride is all it takes to prove that here is a new kind of automobile . . . one that has and does things no other car ever did before!

And the glance at the price tag tells you it's yours . . . that something has happened in the lowest-price field . . . upsetting all standards of low-priced car values!

Big as it is . . . this long, low, sleek torpedo of a car has delivered *as high as 33 miles to a gallon of gas* using Fourth Speed Forward!

Here is economy and performance doubly welcome . . . doubly important . . . at a time when living costs and taxes are pushing steadily upward . . . and with it are a combination of features owners have never seen before . . . cannot get in any other car at any price.

Drive it . . . and compare it with any other lowest-price car on the basis of value alone! Then take into consideration the fact that at its new low price . . . the \$70 to \$100 you can save on gas, oil and touring expense in a year . . . can make it the most inexpensive car you ever owned! And you'll agree this spectacular new Nash . . . is the 1941 buy you can't deny!

Go

NASH

— and Save Money Every Mile!



GENERAL SPECIFICATIONS



NASH AMBASSADOR

Six

ENGINE—Valve-in-head; exclusive built-in inlet manifolds cast inside. Bore 3 $\frac{3}{8}$ " ; stroke 4 $\frac{3}{8}$ " ; displacement 234 cu. in.; taxable h.p. 27.3; developed h.p. 105 @ 3400 R.P.M. 4-point rubber engine mountings. Iso-thermal fuel system; down-draft carburetor; automatic choke; twin ignition; double automatic spark control; steel-strut aluminum pistons; four piston rings; full length water-jacketing. Seven bearing crankshaft with 66.34 square inches of bearing area; vibration damper; full pressure engine lubrication (rifle-bored connecting rods) of all pistons, pins and cylinders; oil filter. Oil capacity 6 quarts; fuel capacity 20 gallons.

CHASSIS—121" wheelbase; independent coil spring suspension at front; semi-elliptic prelubricated leaf springs with metal covers at rear controlled by two-way direct-acting hydraulic shock absorbers. Dual arrow-straight shockproof steering system. Rigid box girder frame with double thickness side rails. Super-hydraulic brakes; cast-iron drums. Front ride stabilizer. All-silent Synchro-Shift transmission; steering column control; automatic cruising gear (4th speed), optional extra. 16 x 6.25 silent ribbed tires. Over-all length—200 $\frac{3}{4}$ inches.

BODY—Unitized all-steel; internal bridge-truss construction and integral chassis sub-frame welded into rigid one-piece unit. Completely insulated and soundproofed with Sand-Mortex applied to body side panels; spool-type rubber body mountings. Weather-sealed doors. Body and fenders Bonderized to prevent rust. Finish—high-gloss Permalux enamel. Exclusive Nash automatic Weather Eye conditioned air system and sedan sleeping car conversion, optional extra.

NASH AMBASSADOR

"600"

ENGINE—L-head; exclusive built-in inlet manifolds cast inside. Bore 3 $\frac{3}{8}$ " ; stroke 3 $\frac{3}{4}$ " ; displacement 172.6 cu. in.; taxable h.p. 23.44; developed h.p. 75 @ 3600 R.P.M. 4-point rubber engine mountings. Iso-thermal fuel system; down-draft carburetor; double automatic spark control; steel-strut aluminum pistons; four main bearing fully-counterweighted crankshaft dynamically balanced by radio; vibration damper; full pressure engine lubrication (rifle-bored connecting rods) of all pistons, pins and cylinders; cylinders completely water-jacketed; oil capacity 5 quarts; fuel capacity 20 gallons.

CHASSIS—112" wheelbase; enclosed independent front suspension system and coil springs at all four wheels, controlled by two-way direct-acting hydraulic shock absorbers; torque tube drive with Axilizer alignment bar at rear. Full ball-bearing shockproof steering system with 33-foot turning circle. Unitized body and frame construction. Super-hydraulic brakes; cast-iron drums. Synchro-Shift transmission with steering column control. Automatic cruising gear (4th speed), optional extra. 16 x 5.50 silent ribbed tires. Over-all length 194 inches.

BODY—Unitized all-steel; internal bridge-truss construction and integral chassis frame welded into one rigid twistproof, shakeproof unit. Completely insulated and soundproofed with Sand-Mortex applied to body side panels. Weather-sealed doors. Body and fenders Bonderized to prevent rust. Finished in high-gloss Permalux enamel. Exclusive Nash automatic Weather Eye conditioned air system and sedan sleeping car conversion, optional extra.

NASH AMBASSADOR

Eight

ENGINE—Valve-in-head; built-in inlet manifolds cast inside. Bore 3 $\frac{3}{8}$ " ; stroke 4 $\frac{3}{8}$ " ; displacement 260 cu. in.; taxable h.p. 31.2; developed h.p. 115 @ 3400 R.P.M. 4-point rubber engine mountings. Iso-thermal fuel system; dual down-draft carburetor; automatic choke; twin ignition; double automatic spark control; steel-strut aluminum pistons; four piston rings; full length water-jacketing. Nine bearing crankshaft; 83.17 sq. in. of bearing area; vibration damper; full pressure engine lubrication (rifle-bored connecting rods) of all pistons, pins and cylinders; oil filter. Oil capacity 7 quarts; fuel capacity 20 gallons.

CHASSIS—121" wheelbase; independent coil spring suspension at front combined with semi-elliptic prelubricated leaf springs with metal covers at rear controlled by two-way direct-acting hydraulic shock absorbers. Dual shockproof steering system. Rigid box girder frame; double thickness side rails. Super-hydraulic brakes; cast-iron drums. Front ride stabilizer. All-silent Synchro-Shift transmission with steering column control; automatic cruising gear (4th speed), optional extra. 16 x 6.50 silent ribbed tires. Over-all length 200 $\frac{3}{4}$ inches.

BODY—Unitized all-steel; internal bridge-truss construction and integral chassis sub-frame one-piece welded unit. Body side panels completely insulated and soundproofed with Sand-Mortex; spool-type rubber body mountings. Weather-sealed doors. Body and fenders Bonderized to prevent rust. Finished in high-gloss Permalux enamel. Exclusive Nash automatic Weather Eye conditioned air system and sedan sleeping car conversion, optional extra.

Nash Motors reserves the right to change specifications, color, equipment and prices without incurring any obligation to adjust price or make changes on cars previously sold.

★ CHALLENGING PERFORMANCE ★ ★ REVOLUTIONARY SAVINGS ★ ★ AMAZING INNOVATIONS ★