

You'll be ahead with

Mark



THE *Nash* '600' FOR 1946 HAS

The most advanced engineering in the low-price field



THE 'SUPERLINER' OF THE HIGHWAYS!

The new ideas which sped streamlined air and rail travel to record safety and economy have been incorporated in the new Nash "600." Nash research . . . Nash engineering . . . Nash forward thinking . . . have produced a car which is years ahead. Hundreds of pounds of dead weight have literally been tossed out of the Nash "600" by welding its frame and body into

one great steel-girdered unit. As with all streamlined construction, the results are revolutionary. So here we have a car that's safer and stronger—with roadability that will thrill you, and economy that is sensational . . . 25 to 30 miles on one gallon of gas at moderate highway speeds . . . 500 to 600 miles on a tankful.



SUPER SCOT ENGINE

Designed and engineered for the Nash "600" construction . . . delivers sensational performance and economy.



THE UNITIZED BODY

Body and frame are one rigid welded unit of arch girders. Does away with hundreds of pounds of dead weight and practically eliminates rattles . . . adding economy, strength, safety and roominess.



EASY TO HANDLE

Fingertip-steering and leather-touch clutch action make the Nash "600" so much easier to handle, so responsive to every traffic demand, and so simple to park. Clutch-operated starter pedal for added safety.



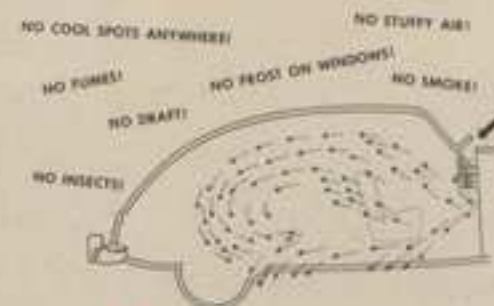
BIG AND ROOMY

Check these interior dimensions and see why you get more room and more comfort. Plenty of space for six large people with no crowding, no cramping.



COMFORT RIDE

No comfort is unquestioned because of individual coil springs on all four wheels, direct-action shock absorbers and rear ride stabilizer.



Nash WEATHER EYE CONDITIONED AIR SYSTEM

Thermostatically controlled, as in a modern home. Draws fresh air through built-in cow! ventilator, filters and warms it, then forces it throughout car when car is moving.

Look

AT ALL THE
EQUIPMENT
included in the
factory list price!

All of the following luxury features are on every model of the Super Series at no extra cost!

- Arm Rest Both Front Doors
- Ash Receiver Front and Rear
- Assist Cards
- Carpet Inserts in Front
- Cigarette Lighter
- Clock
- DeLuxe Steering Wheel
- Dual Dome Light Switch
- Dual DeLuxe Bumper Guards
- Dual Horns
- Dual Sun Visors
- Dual Tail Light
- Dual Windshield Wipers
- Glove Compartment Lock and Light
- Gravel Deflectors
- Gravel Pads on Rear Fenders
- Hi-Test Safety Glass Throughout
- Key Locks on Both Front Doors
- Luggage Compartment Light
- No-Draft Ventilation
- Plastic and Lacquered Radio Grille
- Rear Quarter Ventilating Windows
- Robe Card
- Sealed Beam Headlights
- Spare Wheel
- Stainless Steel Running Board Mouldings
- Voltage Central Generator
- Wrap-Around Bumpers

Yes

AHEAD IN THE LOW-PRICE FIELD

BEAUTY

Advanced in modern design.

ECONOMY

25 to 30 miles on a gallon of gasoline, at moderate highway speeds.

EASE OF OPERATION

Finger-tip steering - feather touch clutch operation.

RIDING COMFORT

at its peak with individual coil springing on all four wheels.

SIZE

Ample head room, leg room and elbow room for six big people.

CONDITIONED AIR

if you wish, with the famous Nash Weather Eye Conditioned Air System.

QUIETNESS

with one-piece welded body and frame, sound proofing and rubber engine mountings.



THE Nash 600

Yes

AHEAD IN THE MEDIUM-PRICE FIELD

BEAUTY

Designed in ultra-modern splendor. Long and massive body.

POWER

Valve-in-head, 112 horsepower engine gives flashing pick-up and more top speed than you'll ever need.

STEERING

Arrow-straight steering requires only finger-tip effort for positive, safe guidance and control.

COMFORT

Glides smoothly over roughest roads with its responsive rubber-cushioned springs.

CONDITIONED AIR

if you like, with the famous Nash Weather Eye Conditioned Air System.

OVER-DRIVE

with Automatic Overtake at small extra cost. Economical - quiet and convenient on the highway.



The Nash Ambassador

THE *Nash* '600' FOR 1946 HAS

The most advanced engineering in the low-price field



THE 'SUPERLINER' OF THE HIGHWAYS!

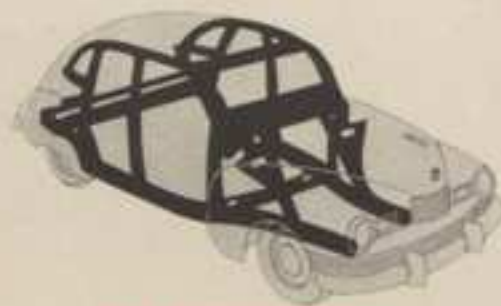
The new ideas which sped streamlined air and rail travel to record safety and economy have been incorporated in the new Nash "600." Nash research . . . Nash engineering . . . Nash forward thinking . . . have produced a car which is years ahead. Hundreds of pounds of dead weight have literally been tossed out of the Nash "600" by welding its frame and body into

one great steel-girdered unit. As with all streamlined construction, the results are revolutionary. So here we have a car that's safer and stronger—with roadability that will thrill you, and economy that is sensational . . . 25 to 30 miles on one gallon of gas at moderate highway speeds . . . 500 to 600 miles on a tankful.



SUPER SCOT ENGINE

Designed and engineered for the Nash "600" construction . . . delivers sensational performance and economy.



THE UNITIZED BODY

Body and frame are one rigid welded unit of arch girders. Does away with hundreds of pounds of dead weight and practically eliminates rattles . . . adding economy, strength, safety and roominess.



EASY TO HANDLE

Finger-tip steering and feather-touch clutch action make the Nash "600" so much easier to handle, so responsive to every traffic demand, and so simple to park. Clutch-operated starter pedal for added safety.



BIG AND ROOMY

Check these interior dimensions and see why you get more room and more comfort. Plenty of space for six large people with no crowding, no cramping.



COMFORT RIDE

No comfort is unquestioned because of individual coil springing on all four wheels, direct-action shock absorbers and rear ride stabilizer.



Nash WEATHER EYE CONDITIONED AIR SYSTEM

Thermostatically controlled, as in a modern home. Draws fresh air through built-in cowl ventilator, filters and warms it, then forces it throughout car when car is moving.

Look
AT ALL THE
EQUIPMENT
included in the
factory list price!

All of the following luxury features are on every model of the Super Series at no extra cost!

- Arm Rest Both Front Doors
- Ash Receiver Front and Rear
- Assist Cards
- Carpet Inserts in Front
- Cigarette Lighter
- Clock
- Deluxe Steering Wheel
- Dual Dome Light Switch
- Dual Deluxe Bumper Guards
- Dual Horns
- Dual Sun Visors
- Dual Tail Light
- Dual Windshield Wipers
- Glove Compartment Lock and Light
- Gravel Deflectors
- Gravel Pads on Rear Fenders
- Hi-Test Safety Glass Throughout
- Key Locks on Both Front Doors
- Luggage Compartment Light
- No-Draft Ventilation
- Plastic and Lacquered Radio Grille
- Rear Quarter Ventilating Windows
- Rebe Cord
- Sealed Beam Headlights
- Spare Wheel
- Stainless Steel Running Board Mouldings
- Voltage Control Generator
- Wrap-Around Bumpers

Nash '600' THE CAR OF TOMORROW - HERE TODAY!

HIGHLIGHTS

Your "car of tomorrow" today has all the following quality features and is still in the low-price field!

ENGINE FEATURES: Sealed-in manifold . . . an expensive process requiring skilled manufacturing. Means maximum power and less gas consumption. Automatic choke . . . for even fuel mixture the year 'round. Rifle-drilled connecting rods . . . oil is forced to piston pins giving 100% full pressure lubrication of all engine parts. Full-floating piston pin . . . gives greater bearing area for maximum wear. Cylinders completely surrounded by water . . . maintains uniformity in operating clearances between pistons and cylinders, minimizes wear. Pressure cooling . . . provides better distribution of coolant, maintaining efficient temperatures for all working parts.

CHASSIS FEATURES: Individual front wheel suspension, coil springs on all four wheels, direct-acting hydraulic shock absorbers, torque

tube drive, and stabilizer bar at rear change bumpy riding into smooth comfort. 20-gallon fuel tank . . . fewer stops for gas fill-ups. 600-16 tires . . . larger tire for better traction, longer wear. Clutch pedal starter . . . an added Nash safety feature.

BODY FEATURES: All-steel unitized body and frame . . . with 8,000 spot welds . . . greater rigidity, safety, roominess, quietness and economy. Sand-Mortex insulation . . . for quietness inside your car. Rotary non-slam door locks . . . no slamming to close doors securely.

EXTRAS: Optional equipment installed in your new Nash "600" at small extra charges . . . Weather Eye Conditioned Air System, convertible double bed in sedan models, foam rubber cushions, vacuum booster pump, oil filter, oil bath air cleaner, directional signals, long distance radio and antenna, spare tire, and seat covers.

SPECIFICATIONS

ENGINE: 6 cylinders, L-Head, 82 horsepower. Taxable H.P. 23.4. Bore 3 1/4 inches. Stroke 2 1/2 inches. Piston displacement 172.6 cubic inches. Steel camshaft. Compression ratio 7.0 to 1. Oil capacity 5 quarts. Cooling system capacity 14 quarts.

CHASSIS: 112-inch wheelbase, gear ratio 4.1 to 1, overall length 199 1/4 inches, overall width 75 1/4 inches.

BODY: Width of front seat cushion 57 1/2 inches, rear seat 30 inches; head room in front 38 inches, in rear 36 1/2 inches; leg room in front and in rear 42 inches each; trunk capacity (brougham) 27 cubic feet. Shipping weight 2780 lbs.



4-DOOR SEDAN



2-DOOR SEDAN



BROUGHAM



The Nash Ambassador

MASTER OF THE MEDIUM-PRICE FIELD

THE FIRST IN FOUR YEARS . . . AND THE FINEST EVER!



4-DOOR SEDAN



2-DOOR SEDAN

Year after year, for 30 years, the Nash Ambassador has ranked as one of America's finest automobiles. Now for 1946, the Ambassador has even more compelling beauty and a greater standard of performance. Nash engineers and designers did not overlook a single

feature to make this new Ambassador the master of the medium-price field.

A Car You'll Be Proud to Own and Drive!

Admired wherever it goes! Overall length from bumper to bumper is 208 1/4 inches, with a wheelbase of 121 inches. Time-

proven 112 horsepower, valve-in-head engine. All of which contribute to the remarkable roadability of the 1946 Nash Ambassador. Then there's the over-drive with automatic overtake, an extra which makes highway driving such a pleasure and so economical.

YOU'LL BE AHEAD WITH A 1946 Nash Ambassador

FEATURES

ENGINE: Sealed-in manifold, automatic choke, rifle-drilled connecting rods, 100% full pressure lubrication, full floating piston pin, oil filter, cylinders completely surrounded by water, and cross-flow radiator core with pressure cooling.

CHASSIS: Individual front wheel suspension, rubber-cushioned springs, direct-acting hydraulic shock absorbers, front ride stabilizer, 20-gallon fuel tank, 650-15 tires, and clutch pedal starter.

BODY: Unitized steel body with sub-frame, Sand-Mortex sound proofing, rotary non-slam door locks, chrome side window reveals.

EXTRAS: Optional equipment installed in your new Nash Ambassador at small extra charges . . . Nash Weather Eye Conditioned Air System, convertible double bed in sedan models, fourth speed forward with automatic overtake, foam rubber cushions, vacuum booster pump, oil bath air cleaner, directional signals, long distance radio and antenna, spare tire, and seat covers.

SPECIFICATIONS

ENGINE: 6 cylinders. Valve-in-head. 112 horsepower. Taxable H.P. 27.3. Bore 3 1/4 inches. Stroke 4 1/2 inches. Piston displacement 234.8 cubic inches. Steel camshaft. Compression ratio 7.0 to 1. Oil capacity 6 quarts. Cooling system capacity 17 quarts.

CHASSIS: 121-inch wheelbase. Gear ratio 4.1 to 1. Overall length 208 1/4 inches. Overall width 75 1/4 inches.

BODY: Width of front seat cushion 57 1/2 inches, rear seat 30 inches; head room in front 38 inches, in rear 36 1/2 inches; leg room in front and rear 42 inches each; trunk capacity (brougham) 27 cubic feet. Shipping weight 3360 lbs.

Nash Motors, Division of Nash-Kelvinator Corporation, reserves the right to make changes at any time, without notice, in specifications, prices and models, and also to discontinue models.

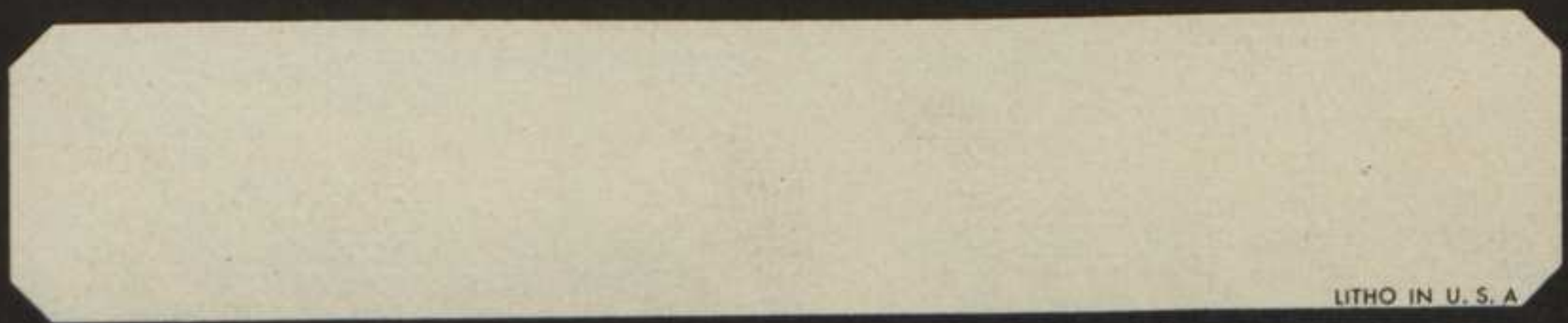
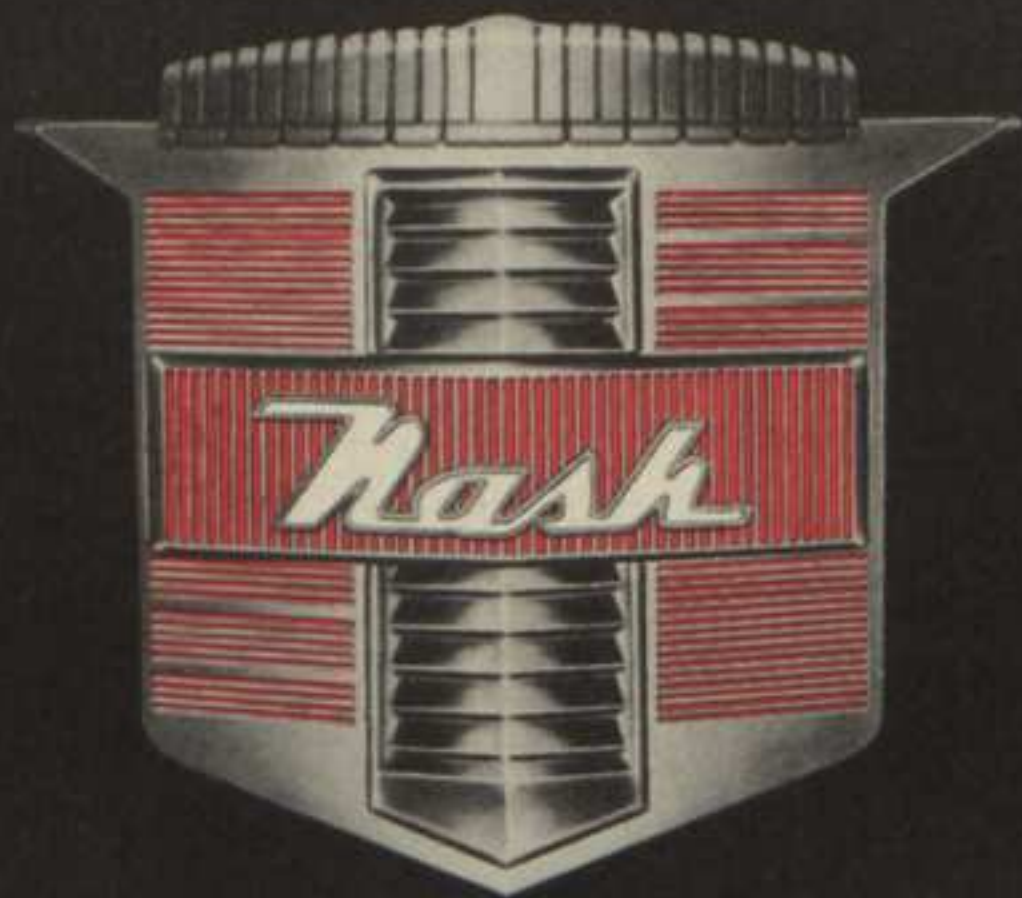


BROUGHAM



SUBURBAN

Wash **THE PATTERN OF CARS TO COME!**



LITHO IN U. S. A