

FOR

Hospitals

Institutions

Municipalities

Flying Fields

Industrial Plants

Mortuaries

Voluntary Fire Depts.

HENNEY-PACKARD AMBULANCES

PackardInfo.com

HENNEY MOTOR COMPANY INC.

FREEPORT, ILLINOIS, U.S.A.

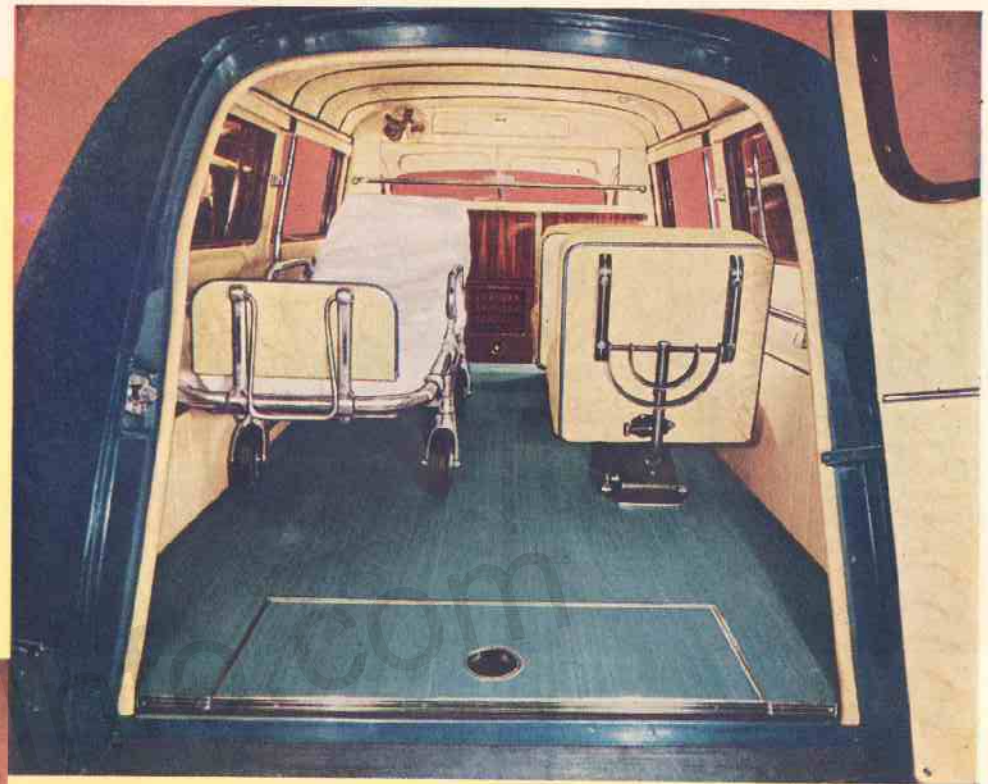
The World's Largest Builders of Fine Funeral Cars and Ambulances



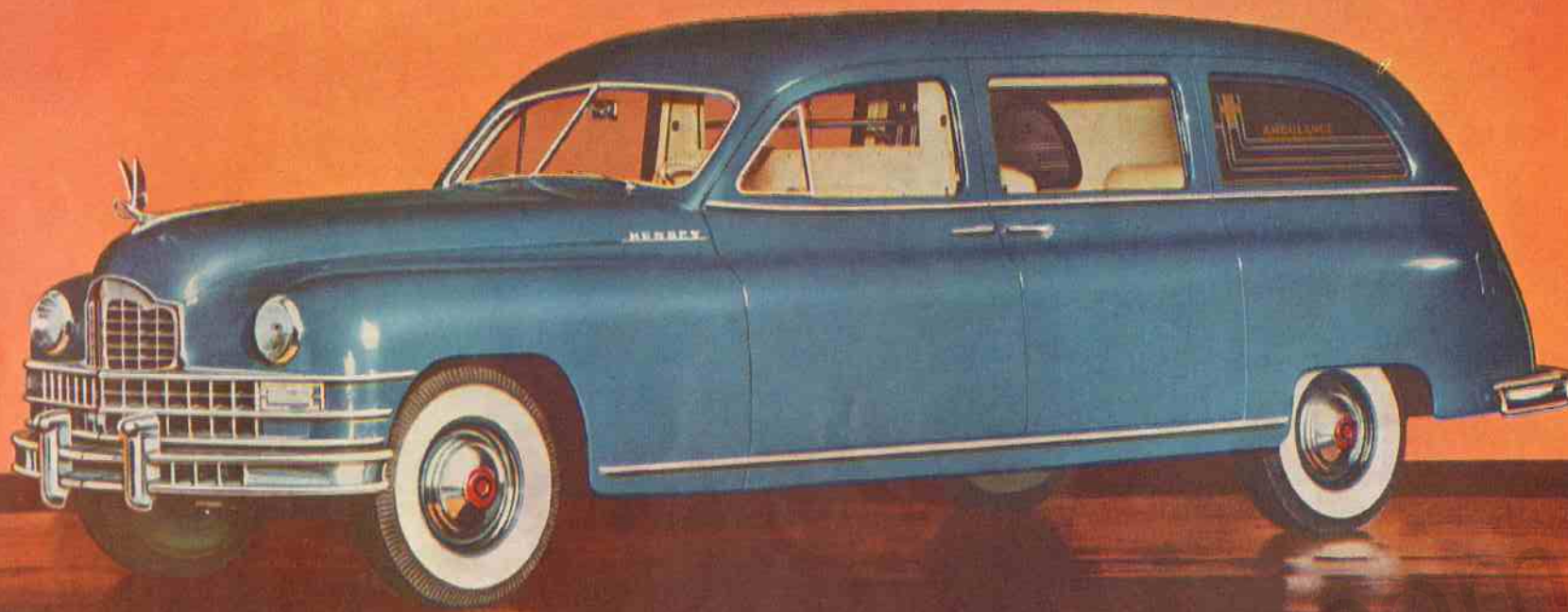
● Illustrated is a Henney-Packard Ambulance equipped with roof lights and siren. The full faced side view presents further visual proof of the Henney-Packard leadership in Modern Styling. By any standard you use to judge an Ambulance, appearance, ease of operation, performance, easy riding, speed, ease of handling, when you have driven this new Ambulance you will agree that Henney-Packard leads the field.

A very special feature of the Henney-Packard specially engineered Ambulance chassis is the 50 amp. hr. generator. This generator begins charging the 21 plate 150 amp. hr. battery at an engine speed of 625 R.P.M., a speed of approximately 10 miles per hour for the Ambulance. This assures ample current for lights, sirens and any other Ambulance equipment requiring electric current.

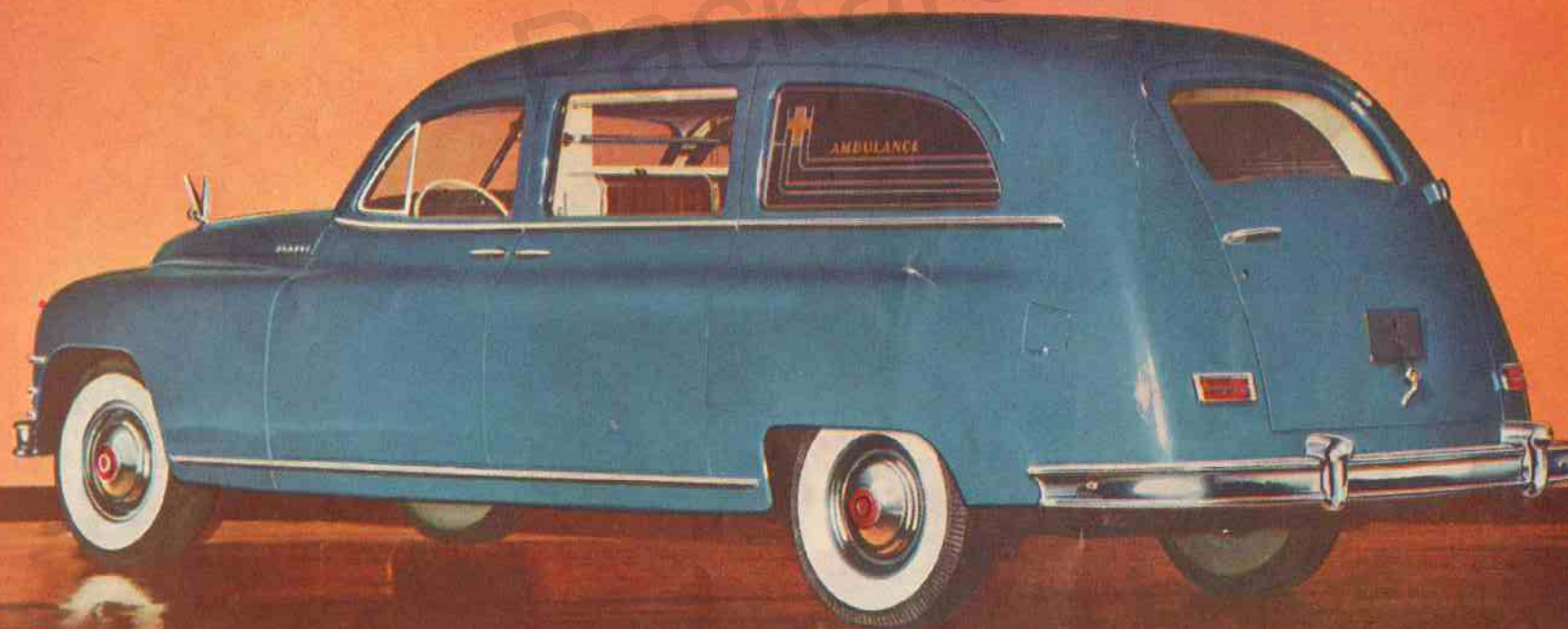
● This reproduction from natural color photograph shows the patient's compartment of a Henney-Packard Ambulance. Note the full size cot, the roomy cabinets for linens and first aid supplies, the special Henney-Pinnow type attendants' seats which may be quickly converted to an auxiliary bed (see illustration below), and the wide center aisle. All these features help you to give outstanding service to every patient.



● Henney-Pinnow type seats with backs lowered to form an auxiliary bed upon which may be placed an emergency type stretcher enabling you to care for a second patient whenever occasion demands. The Henney-Pinnow type seat allows great flexibility in patient compartment seat arrangements for the comfort of both patients and attendants. (See page 6)



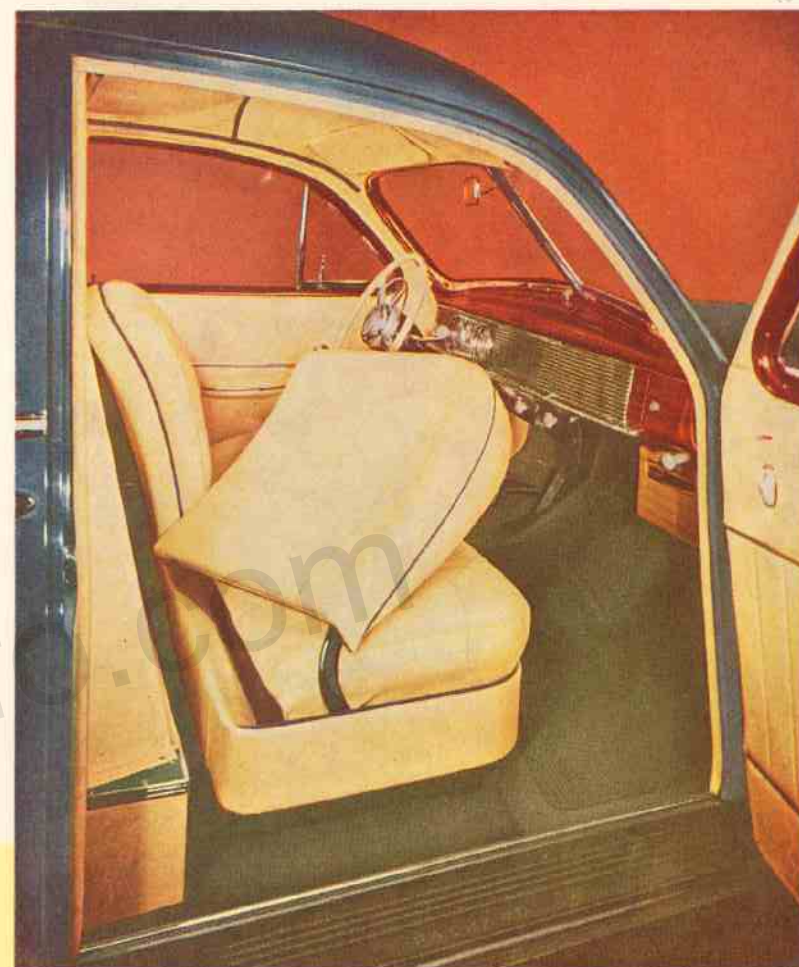
● Nothing can enhance the publicity value to you of your Ambulance Service as much as does a fine well designed Vehicle of Modern Styling. This view of the Henney-Packard Ambulance from three-quarters front,—the angle from which most people on the street view your Ambulance—serves to emphasize Henney-Packard style leadership. Reproduction from Natural Color Photograph.



● Many Motor Car body styles have one vision point from which they show to best advantage—again we call attention to Henney-Packard's advance styling to illustrate that from any vision point, this Free-Flow body design with its striking dynamic lines, from the wide shouldered front fenders, to the deep integral rear fenders, is a thing of beauty. Reproduction from Natural Color Photograph.



● The Driver's Compartment of the Henney-Packard Ambulance illustrates again the Designing and Engineering skill back of Henney Vehicles. Wide roomy arrangement of dash panel instruments, and proper arrangement of gear shift and brake levers make for comfort and convenience. The door glass in driver's compartment and in the side doors of patient's compartment are power controlled by Magic-trol which permits individual window adjustment. A series of buttons at the driver's left permits him to automatically raise or lower any one of the side door windows. There is also a button control mounted on each side door for each of the regulating windows.



● Not only has Henney provided comfortable adjustable seats in the Driver's Compartment of the Henney-Packard Ambulance but seat backs can be swung forward (as illustrated) to furnish space for robes, rain coats, special type emergency stretchers or other items that may be needed. The front seat back is divided but is so designed that three persons can ride in comfort and with ample seat space. The Prest-o-Justment (just touch a button), power operation of the front seat to adjust it for driving comfort of the shortest or tallest driver is another feature for convenience and comfort.



● The Cabinet in the Henney-Packard Ambulance has been designed and engineered to provide storage space for needed supplies such as first aid and sanitary equipment. The interior arrangement of Cabinet space is shown as provided in a Standard Ambulance. Special Cabinets can be supplied when Ambulance specifications call for Air Conditioning, hot and cold running water and inhalator.



● Illustrated is the arrangement of Henney-Pinnow type Ambulance Seats to form a lounge type seat such as is often desirable for the comfort of nurse or attendant on a long trip, or for the comfort of a convalescent patient who does not wish to lie down. Above glass in partition between driver's and patient's compartments is the door to special linen cabinet.



● Here is shown the roominess of Henney-Packard Ambulance bodies. To meet the requirements of Ambulance service Henney has specifically engineered their Ambulance bodies to provide ample room for patient, attendants and complete Ambulance equipment such as Cots, Seats and Storage for Supplies.



● This reproduction from Natural Color photograph shows a Henney-Packard Ambulance Standardly equipped. This is also a full faced side view which emphasizes graphically the perfect balance of window openings, another Henney triumph of design. Also illustrated are the mirror rear window glasses which permit clear vision from inside patient's compartment, but do not permit looking into patient's compartment.

This style-leading Henney-Packard also leads in mechanical features. Powered by the Packard Custom 160 Horse Power engine, (the most powerful automobile engine built) with a chassis designed to mount perfectly a body of ample room on a wheelbase of 156 inches, it is daily proving our claims for ease of handling and mechanical merit.



● Whether you believe the Modern Advertisements or the Old Adage, there's nothing like *experience*.

Mostly it's safe to rely on the *experience* of others, but after all it's your own *experience* that counts most.

Applying this matter of *experience* to the building of Ambulances no one would question the years of *experience* piled up by Henney. Our Organization, Manufacturing, Engineering and Distribution, abounds in individuals who have had years of *experience* building, designing and selling Henney Vehicles.

Applying this matter of *experience* to owners of Henney-Packard Ambulances, we are proud to number among our owners a very great proportion of the leading Ambulance Service Operators in the U.S.A. The same may be said as applying to Hospitals, Public Institutions, some of the largest Industrial Corporations and to many branches of our Armed Services. These owners have built up *Use-Experience* and it has been *Good*.

As we said in the beginning "after all it's your own *experience* that counts most," and we want you to have an *experience* we know you have never had up to now unless you have driven the current Model Henney-Packard Ambulance.

We believe this to be the Best Balanced, the easiest riding and the easiest handling Ambulance you have ever had *experience* with.

We want you to let us prove these statements by letting you drive the new Henney-Packard Ambulance and judge it from this personal driving *experience*.

We stress such features as Ultra-Modern Body Design, windows balanced in shape and size, roomy interiors with differing seat styles to meet varying requirements.

We continue to tell about the Packard Custom Engine of 160 Horsepower (the most powerful automobile engine built), the specially engineered Ambulance chassis with low centering of weight balance and compact construction that provides a new degree of easy-to-handle roadability and never-before-experienced riding smoothness.

We say again we want you to let us furnish the opportunity to get this first-hand *experience*. We want you to be the Judge.

Fill out the enclosed card and drop it in the mail today. Detailed specifications and a demonstration are yours for the asking.