

NOTE:—WHITE SIDEWALL TIRES—BUMPER FOG LIGHTS AND DRAPES—OPTIONAL AT EXTRA COST.

HENNEY  
PACKARD

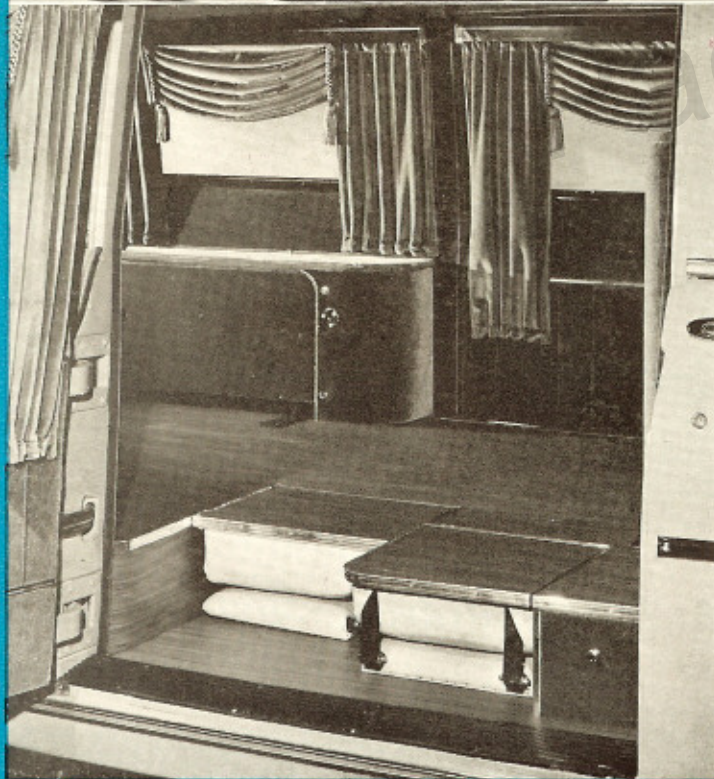
*Presents* **FOR 1950**

**MODEL 15097  
MULTIPLE PURPOSE CAR**

**NEW**

*... Appearance · Convenience · Value*



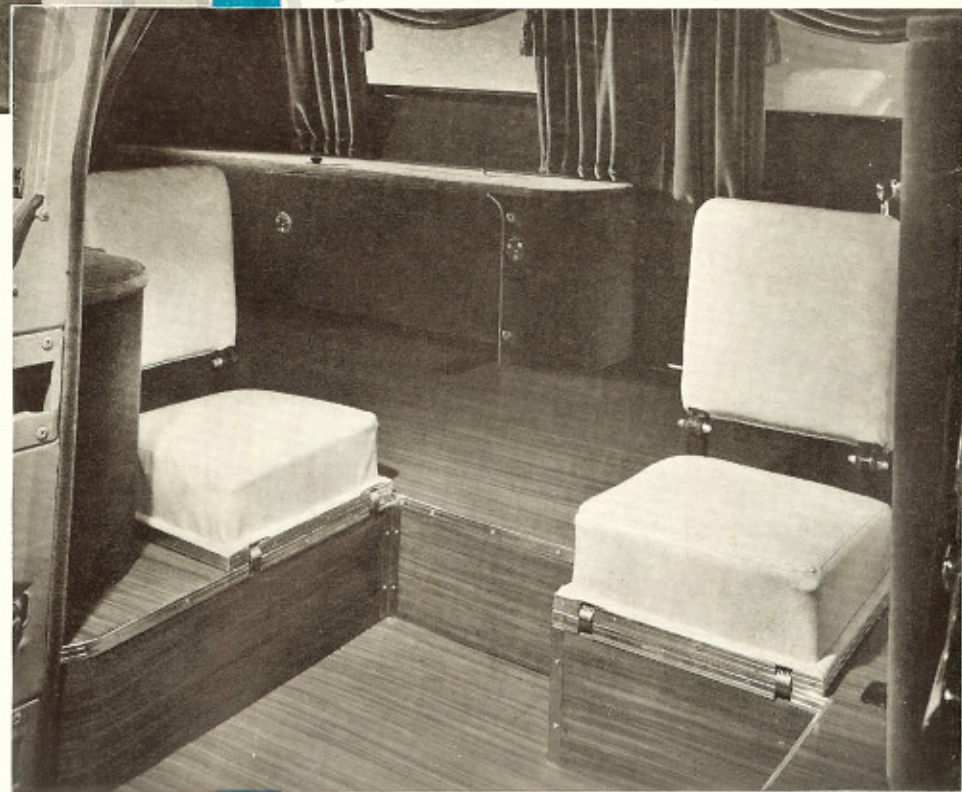


- Two full grown adults have comfortable seat space on these built-in attendant seats. Note ample shoulder, hip and foot room.

- When but one attendant seat is used, additional foot and leg room is instantly available by placing the second attendant seat in up position. On long trips this "stretch out space" is an appreciated comfort.

- When both seats are folded into floor, the main floor is perfectly level and, ready for casket roller panel to be lowered to operating position.

- This illustration shows auxiliary seats in position for occupancy by attendants. Note the location, the size and the provision for ample room for each occupant. Note the floor at these seats. It is at door sill level. No stepping up or down.



- In presenting the 1950 Henney Model 15097 Multiple Purpose Car, we call particular attention to the designing that has made the appearance of this car longer, lower and with cleaner lines.

This same attention to detail applies also to the interior with its clean-cut appearance and its features for more utility.

The long sleek exterior lines as incorporated in this model have been achieved without reducing in any particular the roomy interior.



● Its clean lines are the result of careful body designing which has produced a car easily cleaned and easily kept clean, both as to exterior and interior.

The pictures on these pages present the story of its appointments and equipment — details covering both old and new ideas combined to produce new conveniences for better service to your clients and more flexibility for you, the operator.

Whatever additional information you may wish we shall be happy to furnish. Use the prepaid reply card herewith or send your request on your own letterhead.

## Price

BASIC FACTORY LIST—STANDARD  
SPECIFICATIONS LESS THAN

**\$5000.00**

Applicable Taxes Additional

*350 fed tax*  
**\$5350-**

Where can you secure a comparable full sized car at this price, that will serve as well?



● This illustration, taken thru open rear door, shows the roomy body — full size in each dimension — and the simple but quick acting method for lowering the casket table panels when converting for hearse use.

The casket table rollers are mounted on reverse side of panels fitted into sides and driver's compartment partition and are ready to use as soon as these panels are lowered to lie flat on floor of car.



**HENNEY  
PACKARD**

# Specifications:

**ENGINE:** Packard Custom 8 L-head type. Bore  $3\frac{1}{2}$ " stroke  $4\frac{1}{2}$ " piston displacement 356 cu. in. Brake horsepower is 160 at 3600 RPM. Nine main bearings with area of 86.8 sq. in. 104 lb. crankshaft.

**WHEELBASE:** 156 inches. Special frame built for use with funeral car and ambulance bodies only. One-piece side rails.

**FRONT SUSPENSION:** Packard independent suspension of parallelogram type employing heavy coil spring to carry heavier load. Front shock absorbers are double acting, end to end discharge type.

**REAR SUSPENSION:** Rear springs semi-elliptical type slung under axle. Springs are  $54\frac{1}{2}$ " long x 2" wide. Ends mounted in live rubber. Rear shock absorbers are Monroe Direct Acting, airplane type. A fifth shock absorber, a roll control bar and lateral stabilizer are all important parts of the rear suspension.

**ELECTRICAL SYSTEM:** Heavy duty 21 plate battery, 150 amp-hr. capacity. Autolite starting motor operated by accelerator. Generator Autolite GGJ-4804A, 50 amp-hr. capacity cutting in at 625 RPM.

**TRANSMISSION:** Unimesh Selective-silent Synchronized. Overdrive and Electromatic available at extra charge.

**BODY:** Henney all-steel full sized combination funeral car and ambulance body. All body panels including doors and one-piece roof are stamped from heavy deep drawing auto body steel. Body is framed in Henney framing jig insuring proper fit of all panels. Metal panels and framework are painted on the inside surface with primer and are then covered with asphaltum body deadener to prevent rumble.

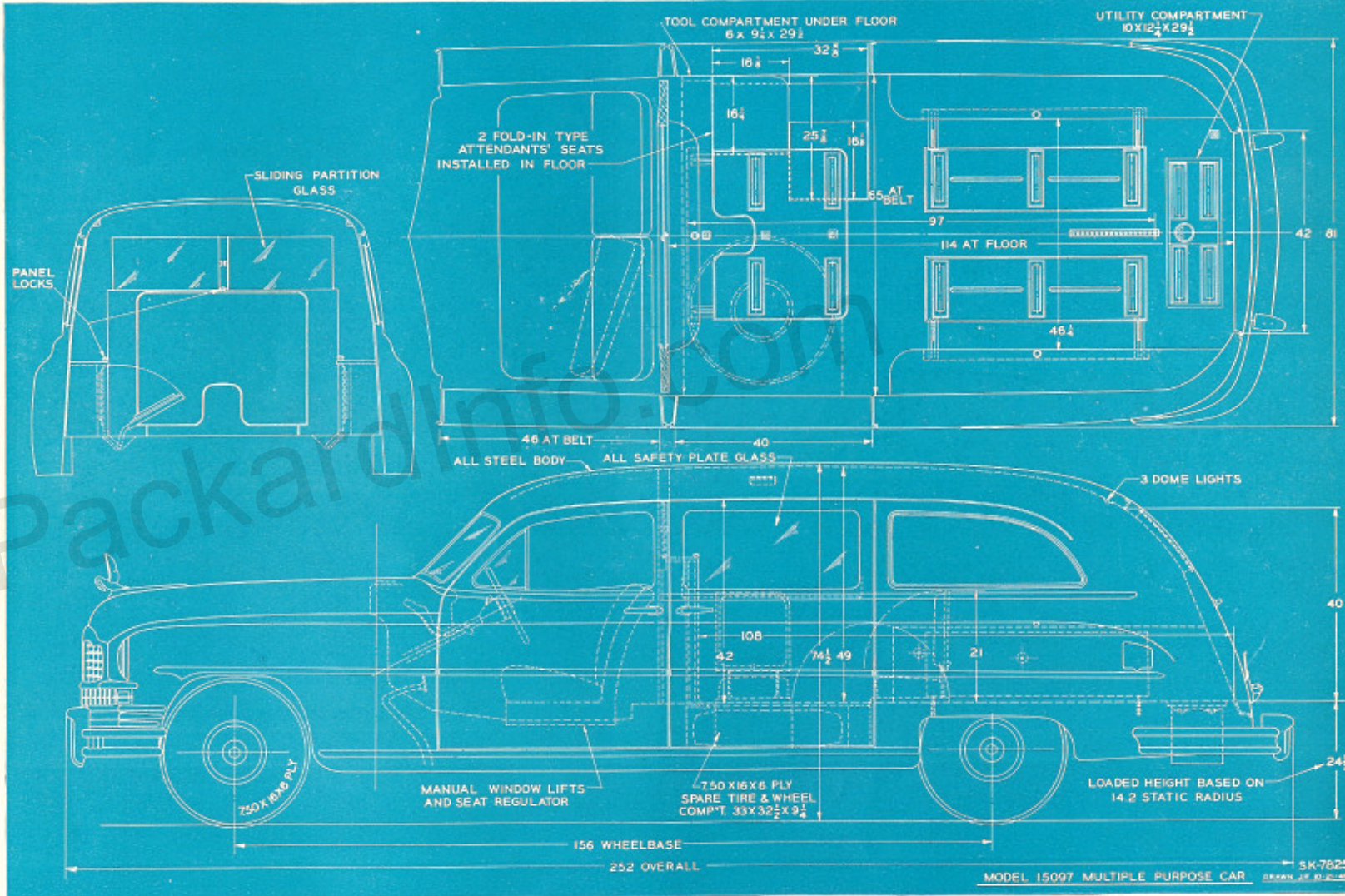
**DOORS:** All steel full sized doors individually panelled and assembled on steel jigs to insure proper door fits. Regulating glass in front doors and rear side doors are manually operated crank type. Rear quarters and rear door glasses set solid. Sliding glass in partition. All glass is Safety Plate.

**EQUIPMENT:** Henney concealed type casket rollers which fold against wheelhouse and partition. Church truck box with reversible cover with rollers on one side and regular floor covering on opposite side. Two fold-in type attendants seats built in at right rear side door. Rear seat faces forward and front seat faces right rear side door. When seats are not in use they are folded into the floor compartment and a level floor results ready for the casket rollers to be folded into operating position. Roller curtains on four rear side windows.

**UPHOLSTERY:** Nylon supported vinyl plastic on driver's seat cushion and back with balance of entire car upholstered with heavy napped-back vinyl plastic. Seven beautiful colors to choose from.

**PAINTING:** Henney special lacquer system. All colors except white, ivory, cream or other requiring special undercoats furnished without extra charge.

**MISCELLANEOUS EQUIPMENT** Black lighted instrument panel. Two sun visors in driver's compartment. Dual windshield wipers. Turn indicator with automatic return to neutral after turn is completed. 3 dome lights in rear compartment. Fresh air ventilators in driver's compartment. Tilting No-Glare rear view mirror.



**HENNEY MOTOR COMPANY, INC., FREEPORT, ILLINOIS**

November 1949

