

*The
Total Performance
1965 FAIRLANES*





Cover: Big, bold '65 Fairlane 500 Sports Coupe
Left: Beautiful new Fairlane 500's—4-Door Sedan, Station Wagon and Hardtop with vinyl-covered roof option

*These are
The Total Performance '65 Fairlanes:
Bigger. Bolder.
More Beauty. More Value*

The look is new, bigger, distinctive. Yet, drive the total performance Fairlane and you'll quickly find a *great deal more* than the styling is new.

For '65, the Fairlane formula—big-car roominess and comfort inside . . . trim size outside for easy handling, easy parking . . . plus luxury at low price—includes *more of everything* that adds up to value.

A new standard 200-cu. in. Six, 120-hp strong, has the smoothness and quality of a 7-main-bearing crankshaft and hydraulic valve lifters for quietness. Steering and braking effort are further reduced—the ride is even smoother and quieter. Trunk space has been increased 19%.

There are more powerful Challenger V-8 options (200 and 225 hp) now alongside the 271-hp High Performance V-8. Famous 3-speed Cruise-O-Matic is now available with *all* engines; sporty 4-speed and gas-saving Overdrive options are also offered.

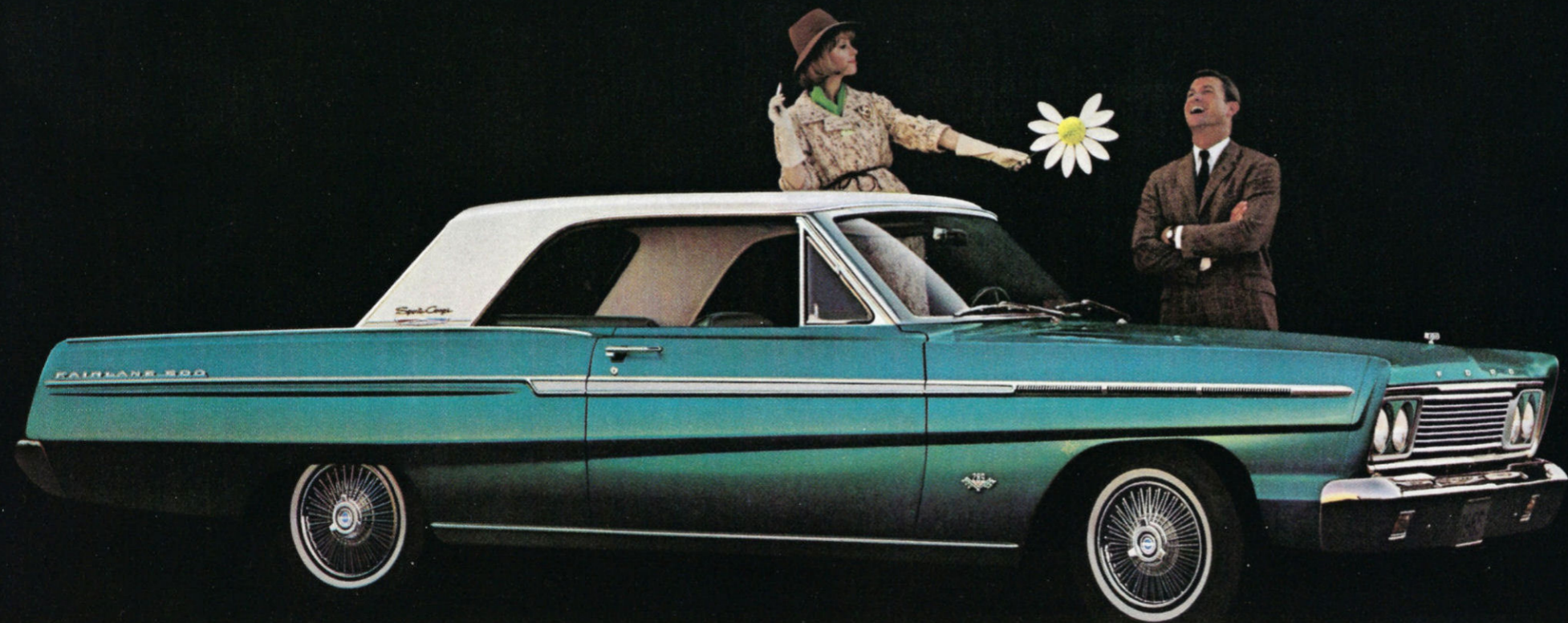
New Fairlanes are just as luxurious inside as out. From bucket-seat Sports Coupe to budget-wise Fairlane 2-Door, upholsteries are new, richer and in larger selection. And a new, smaller steering wheel lets the driver slip in and out more easily.

Standard are smooth-running low-profile tires and automatic chokes on all engines.* New "Sta-Ful" battery and alternator take their place along with famous Ford service-saving and Twice-a-Year Maintenance features (see back cover).

*Except High Performance V-8

Now's the time to see how the Fairlane formula fits you. See why Fairlane has so many happy owners (last count: over three-quarter million). Test-drive the '65 Fairlane now at your Ford Dealer's.

FAIRLANE 500: HARDTOPS • SEDANS • WAGON
FAIRLANE: SEDANS • WAGON



Right: elegant bucket-seat interior in Sports Coupe;
(far right) equally rich Hardtop interior

Fairlane 500 Hardtops

BOLDER, MORE BEAUTY: Obviously, hardtops in the medium size have never been handsomer. Or more luxurious. Nor have they come more spirited or quality-built than these total performance Fairlane 500's.

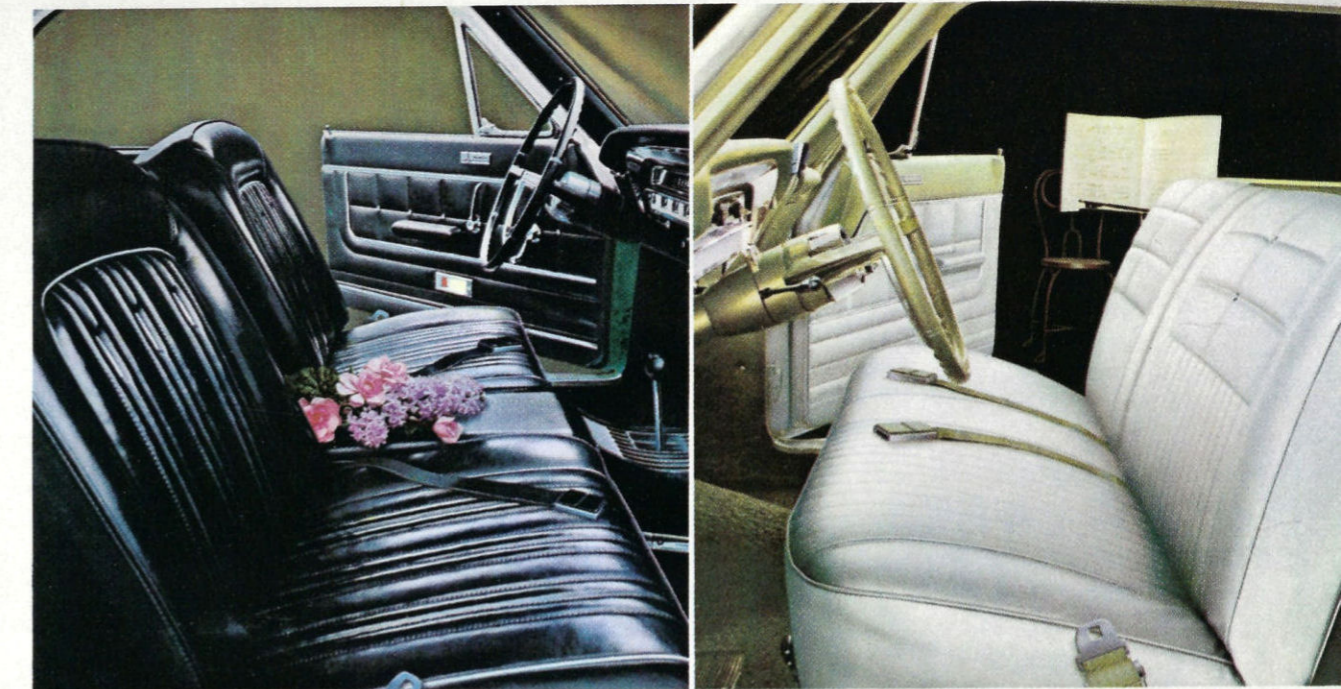
Like sports flair? The Sports Coupe is for you. Deep-foam bucket seats with console . . . rich, pleated vinyl trim all around. Want deep-cushioned, full-width seats front and rear? You want the Hardtop. Between them, you have 13 elegant standard trim choices (plus five tempting options). Performance options include three lively Challenger V-8's with up to 271 hp. Team them up with sporty 4-speed manual or cream-smooth 3-speed Cruise-O-Matic transmissions.*

Bold new styling—obviously. But the real beauty of all new Fairlanes is in their solid quality. You can see it in their fine workmanship; you can *feel* it out on the road. These are total performance Fairlanes whose quality is backed by over 12-billion owner-driven miles!

*Optional

Standard Equipment Highlights □ 120-hp Fairlane Six □ 3-Speed Manual Transmission □ Bucket Front Seats with Console, "Bucket-Styled" Rear Seat (Sports Coupe) □ Full-Width, 3-Passenger Seats (Hardtop) □ Color and Upholstery Choices: 15 Colors of Diamond Lustre Enamel; 13 Interior Trims—6 All-Vinyl and 2 Cloth-Vinyl (Sports Coupe), 5 Cloth-Vinyl (Hardtop) □ Full Carpeting □ Courtesy-Lighted Interior □ Safety-Courtesy Door Lights, Deluxe Wheel Covers (Sports Coupe) □ Heater-Defroster, Front Seat Belts† □ Ford's Twice-a-Year Maintenance Features (back cover) □ **Popular Options** (see also page 11) □ Choice of Three V-8's (200, 225 & 271 hp) □ Cruise-O-Matic □ 4-Speed Manual Transmission □ SelectAir Conditioner □ Power Steering □ Power Brakes □ 5 All-Vinyl Trims (Hardtop) □ White Sidewall Tires □ Wire-Style Wheel Covers □ **Basic Specifications** □ Length 198.8" □ Width 73.8" □ Wheelbase 116" □ Treads—front 57", rear 56" □ Weight (approx.) 3001 lb. (Sports Coupe), 2994 lb. (Hardtop) □ Trunk Luggage Volume 15 cu. ft.

†See "Prices" back cover



Fairlane 500 Sedans

BIGGER: Same generous, roomy comfort inside . . . famous easy-to-handle dimensions outside. What's bigger, then? For one, the new standard Fairlane 200-cu. in. Six—120 hp of quick, smooth going. For another, bigger and more powerful Challenger V-8's* . . . with 200 and 225 hp on the way up to the High Performance hustler with 271 hp!

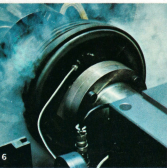
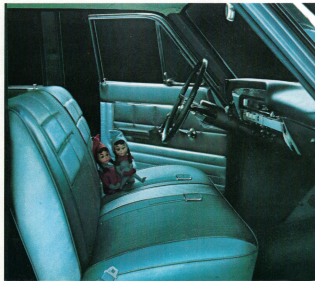
Like all Fairlanes, there's more of everything to make new Fairlane 500 2- and 4-Door Sedans finer cars. More luxury in the smoother, quieter ride. More ease in steering and braking. A new, bigger trunk (increased 19%). A bigger selection of interior trims (5 standard, 5 all-vinyl options), more color choices (15) . . . a bigger selection of luxury options (page 11) than ever.

Add in the new longer-lived "Sta-Ful" battery and new alternator, and you can top everything else with the *biggest* service savings of any car in Fairlane's class!

*Optional

Standard Equipment Highlights □ 120-hp Fairlane Six □ 3-Speed Manual Transmission □ Full-Width, 3-Passenger Seats □ Color and Upholstery Choices: 16 Colors of Diamond Lustre Enamel; 5 Cloth-Vinyl Interior Trims □ Full Carpeting □ Courtesy-Lights Interior □ Electric Windshield Wipers □ Safety-Yoke Door Latches □ Heater-Delcoaster, Front Seat Belts □ Alternator □ "Sta-Ful" Battery □ 14-Inch Low-Profile Tires □ Ford's Twice-a-Year Maintenance Features (back cover) □ Popular Options (see page 11) □ Choice of Three V-8's (200, 225 & 271 hp) □ Cruise-O-Matic □ Overdrive □ Ford Air Conditioner □ Remote-Control Outside Mirror □ Power Steering □ Power Brakes □ Radio □ Deluxe Wheel Covers □ Emergency Flasher □ Remote-Control Trunk Lid Release □ Basic Specifications □ Length 196.8" □ Width 73.8" □ Wheelbase 116" □ Treads—front 57", rear 56" □ Weight (approx.) 2917 lb. (2-Door), 2976 lb. (4-Door) □ Trunk Luggage Volume 15 cu. ft. (See "Prices" back cover)

Two kinds of proof that Fairlane is the top quality car in its class. Right: style, comfort and fine fabrics combine in new Fairlane 500 4-Door interior. In Ford engineering lab (below), brake linings undergo torture-test far more severe than any highway "panic" stop.





Left: '65 car value to best, Fairlane 2-Door Sedan (also offered in 4-Door model)

Right: roomy, fully appointed Fairlane interior

Fairlane Sedans

MORE VALUE: The Fairlane formula has always combined value with quality. Now for '65, see how much more you get of both at the low Fairlane price!

Smart new styling. Smoother, quieter ride. Easier handling and braking. New, more powerful 200-cu. in. Six. Bigger 15-cu. ft. trunk. Add standard equipment that makes Fairlane 2- and 4-Door Sedans so *fully* equipped. Examples: heater and defroster, front seat belts, arm rests and ash trays, dual visors with retention clips, courtesy-lighting.

Then add in Ford exclusives: tight-gripping Safety-Yoke door latches, the fast-multiplying savings of Twice-a-Year Maintenance . . . plus all the others. On top of all these, add Fairlane's new "Sta-Ful" battery and new alternator plus other service-savers like self-adjusting brakes, aluminum muffler and the rest.

That's *value*—that's Fairlane! And the most pleasant surprise of all is the *low* Fairlane price tag!

Standard Equipment Highlights ☐ 195-hp Fairlane Six ☐ 3-Speed Manual Transmission ☐ Full-Width, 3-Passenger Seats ☐ Color and Upholstery Choices: 12 Colors of Diamond Lustre Enamel; 3 Cloth-Vinyl Interior Trims ☐ Color-Keyed Vinyl-Rubber Floor Covering ☐ Courtesy-Lighted Interior ☐ Dual Visors with Retention Clips ☐ Arm Rests and Ash Trays, Front and Rear ☐ Cigarette Lighter ☐ Electric Windshield Wipers ☐ Safety-Yoke Door Latches ☐ Heater Defroster, Front Seat Belts ☐ Alternator ☐ "Sta-Ful" Battery ☐ 14-Inch Low-Profile Tires ☐ Ford's Twice-a-Year Maintenance (back cover) ☐ **Popular Options** (see also page 11) ☐ Choice of Three V-8's (200, 225 & 271 hp) ☐ Cruise-O-Matic ☐ Power Steering ☐ Power Brakes ☐ Padded Instrument Panel and Visors ☐ Tinted Glass ☐ White Sidewall Tires ☐ **Basic Specifications** ☐ Length: 198.5" ☐ Width: 73.8" ☐ Wheelbase: 116" ☐ Treads—front 57", rear 56" ☐ Weight (approx.) 2911 lb. (2-Door), 2971 lb. (4-Door) ☐ Trunk Luggage Volume 15 cu. ft.

See "Prices" back cover



Quality-testing the power of total performance. All engines, V-8's and Sixes, get rigorous test runs before they go into new Ford-built cars.



Left: new Fairlane 500 wagons offer choice of five handsome trims; a rear-facing third seat option makes either new Fairlane an 8-passenger wagon

Fairlane Wagons

Ford, America's station wagon specialist, had you in mind when the total performance Fairlane and Fairlane 500 wagons were designed. Get behind the wheel and see for yourself how many times Ford was right on target.

Style is all new... luxury, too. Interiors are more richly appointed, courtesy-lighted, trim selection is wider than ever!

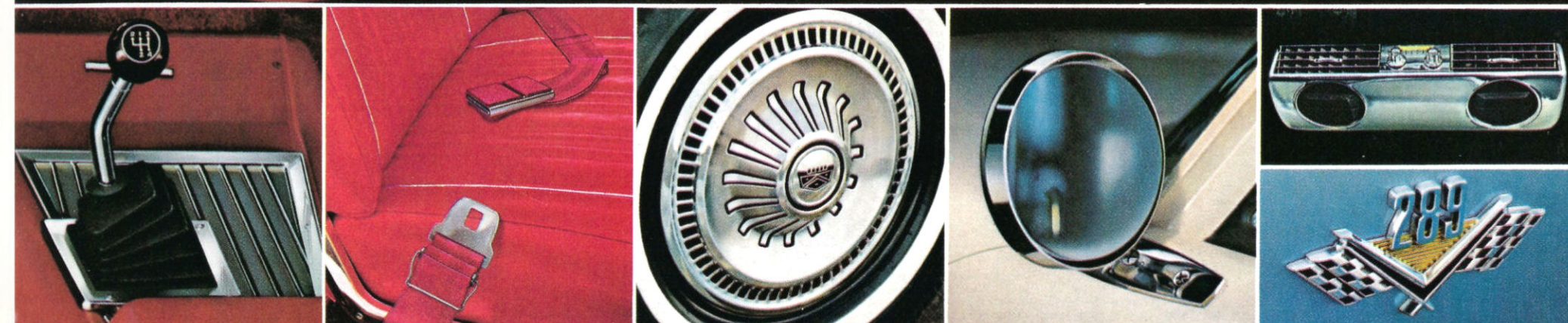
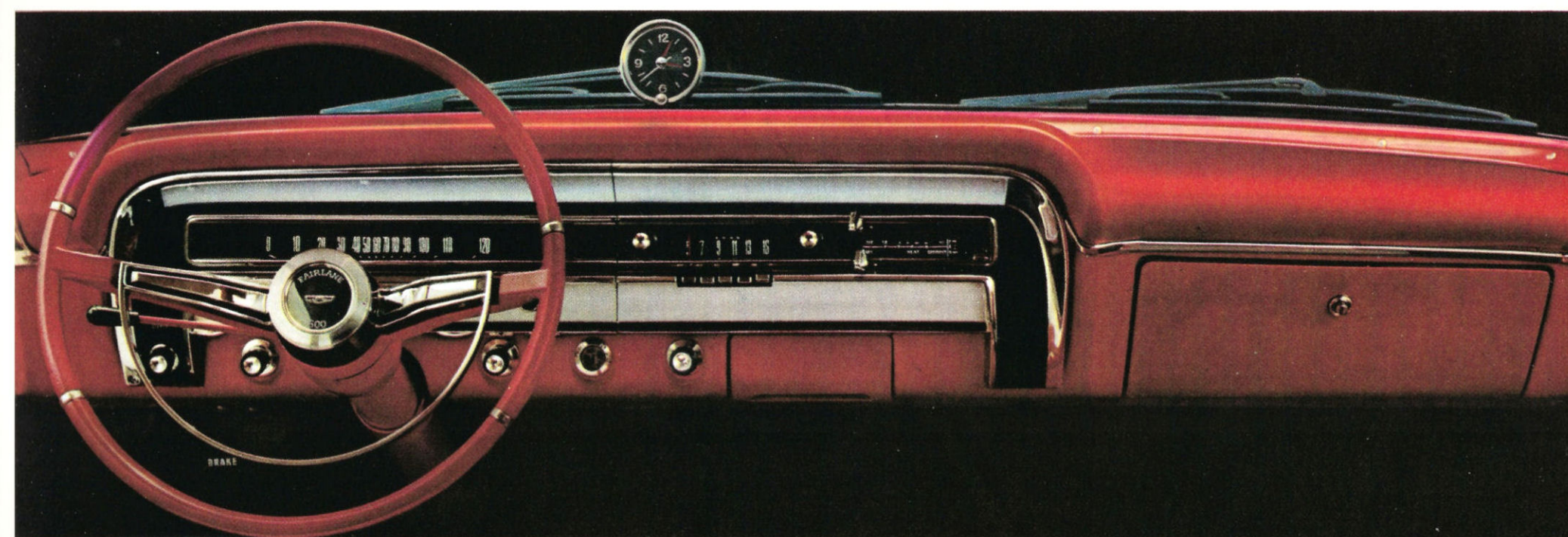
But Ford didn't forget that function comes first in a wagon. That's why you get slick, quick-converting second seats... 98.6 cu. ft. of loadspace*. ... smoother roll-down tailgate window... easier counterbalanced tailgate... handier stand-up spare tire.

'65 Fairlanes do all wagon work better with a new standard 120-hp Six... new Challenger V-8 options up to 225 hp... Cruise-O-Matic now available with all engines. There's a new "Sta-Ful" battery... new alternator... and so many more "news" that they fill a book—the "1965 Ford Wagons" catalog. Get the full story on '65 Fairlane wagons and find out how much more they can do for you. Ask your Ford Dealer for your copy *today*.

*Including 6.7 cu. ft. in below-floor storage compartment with lock



Left: new Fairlane 500, one of two Fairlane wagons for '65



Fairlane Options and Accessories

PADDED INSTRUMENT PANEL: luxurious cushioning topped with color-keyed vinyl. **PADDED SUN VISORS** (not shown): trimmed in white vinyl, these beautifully complement panel padding. **POWER STEERING:** new unit for '65 which takes less wheel turning, is faster, more precise. Cuts manual steering effort by as much as 75%. Makes child's play of parking, low-speed maneuvering. **AM RADIO:** all-transistor design for instant warm-up, greater dependability. Rich tone, five push-button station settings. **ELECTRIC CLOCK:** mounts on panel top for quick reference by driver or front seat passengers. Self-regulating, sweep second hand, softly illuminated at night.

4-SPEED MANUAL TRANSMISSION (available with

225- and 271-hp V-8's): close-ratio, fully synchronized, sports-type transmission. Floor-mounted shift lever with positive reverse gear lock-out and shift pattern etched on shift knob. **DELUXE SEAT BELTS:** automatic retractors stow belts at seat side when not in use. **DELUXE WHEEL COVERS:** all-new designs for '65; available either full disc type as shown above or in sporty wire-style design as shown on page 4. **REMOTE-CONTROL OUTSIDE MIRROR:** perfect aiming from *inside* the car with windows *closed*. Simple toggle control. (One of several mirror types.) **SELECTAIRE CONDITIONER** (V-8): finest, fastest-cooling air conditioner ever offered in a Ford. Powerful 3-speed blower, four adjustable outlets. **FORD AIR CONDITIONER** (not shown): economical, highly efficient answer to sultry summer heat. **CHALLENGER**

V-8's: 200, 225 and 271 horsepower; described fully under "Engines" in specifications on back cover. Available in all sedans and hardtops; with transmission options as noted in specifications.

PLUS: Vinyl Roof Covering in Black or White (Hardtops) ☐ All-Vinyl Upholstery (500 Sedans, Hardtop) ☐ Remote-Control Trunk Lid Release ☐ Power Brakes ☐ Parking Brake Warning Light ☐ Emergency Flasher (parking and taillights) ☐ Courtesy Light Group* ☐ Rear Seat Radio Speaker ☐ StudioSonic Sound System ☐ Front Seat Belts† ☐ Heater-Defroster† ☐ Tinted Glass ☐ Locking Differential ☐ White Sidewall Tires ☐ Windshield Washer and 2-Speed Electric Wipers ☐ Door Edge Guards ☐ Rocker Panel Moldings ☐ Rear Fender Shields ☐ Two-Tone Paint (18 combinations) ☐ and many others.

*Includes lights for instrument panel ash tray, glove box, trunk, map light, backup lights, front and rear courtesy switches. Items also available separately

†Deletion—see "Prices" on back cover

1965 Fairlane Specifications*

COLOR AND UPHOLSTERY SELECTIONS: Pick your favorite color from 15 brilliant Diamond Lustre Enamel single tones, or 18 two-tone combinations. You have a total of 28 Fairlane upholstery choices of rich cloth and vinyl or all-vinyl combinations. Covering standard trim and options, you have 15 choices in the new handknit, 27 choices in acetate and 7 choices in wagers. In some cases a trim is offered with more than one model. Your Ford Dealer will be happy to show you actual samples of new Fairlane colors and upholstery.

FAIRLANE DESIGN: The new styling, comfort and luxury of 1965 Fairlanes add much to your driving and riding enjoyment. Features include: Welded integral body and frame for high strength-to-weight ratio, resistance to squats and rattles; full body insulation and weather sealing, greater convenience with new right-hand side ignition switch and dismounted heater control; sleek dual sun visors with retention clips; Deep-Drop steering wheel; larger, newly styled arm rests front and rear; ash trays in panel and rear arm rests; front seat belt; Center-Voke door latches; simple-watch, counterbalanced hood and rear deck lid; Center-Fill fueling (15-gallon fuel tank).

ENGINE: 1965 Fairlane Six (Std. on all models)—200 cu. in. disp.; 13.68" bore x 3.13" stroke; 9.3 to 1 comp. ratio; 7 main bearings; reg. fuel; single-barrel carb.; auto. choke; oil pump; oil cap; oil, incl. filter, 4 qt.

200-HP Challenger V-8 (Std.)—289 cu. in. disp.; 4.00" bore x 2.81" stroke; 9.3 to 1 comp. ratio; reg. fuel; 2-barrel carb.; auto. choke; oil pump; oil cap; oil, incl. filter, 6 qt.

225-HP Challenger Special V-8 (Std.)—Same specifications as 200-HP Challenger V-8 except: 10.0 to 1 comp. ratio, 4-barrel carb., prem. fuel, dual exhausts.

271-HP High Performance Challenger V-8 (Std.)—Same specifications as 200-HP Challenger V-8 except: 10.5 to 1 comp. ratio, Dual Prem. fuel; manual choke; manually adj. valve; dual "multiflex" exhausts.

ENGINE FEATURES: Fairlane engine economy and durability are results of modern, efficient design, high quality materials, and painstaking manufacture. Other contributing features: 8000-mile (or 6 months) full-flow oil filter; 30,000-mile (or 3 years) fuel filter; dry element air cleaner; year-round 160° thermostat; 17-circuit electrical system; 30-amp. alternator; 34-plate battery; 45-amp-hr. weatherproof ignition with constant resistance wiring; and air-cooled breaker points; fully lubricated mufflers (all mufflers of aluminum and stainless steel).

On 271-HP V-8: 4-amp. alternator, "multiflex" exhaust system.

CLUTCH AND MANUAL TRANSMISSION: Clutch face diameter 8 1/2" with Six, 10" with V-8's. 3-Speed Manual Transmission (Std. with Six); synchronizers in 2nd and direct, and friction bearings throughout. Standard "H" shift pattern with lever on steering column. Synchro-Smooth Drive Transmission (Std. with V-8's except 271-HP model) with synchronized manual shifting in all three forward gears.

4-Speed Manual Transmission (Std. 225- and 271-HP V-8's)—Fully synchronized forward gears with floor-mounted stick shift. Overdrive (Opt. with 200-HP V-8): conventional 3-speed transmission plus automatic 4th gear which cuts in above 18 mph, cuts out below 21 mph (approx.). Downshifts to direct by flooring accelerator.

CRUISE-O-MATIC DRIVE: Opt. on all models, all engines—Simplified design, lightweight, cast-aluminum construction. Tension centered combined with planetary gear set. Console-mounted selector lever (Sports Console). Three forward speeds, one reverse. Two selective drive ranges provide a 3-speed range starting in low for all manual driving, or 3-speed range starting in intermediate for more automated driving on slippery surfaces. Effective engine braking in low range for better control on grades and hilly driving.

**For all models except wagon. Complete specifications and other special wagon information is included in the 1965 Ford Wagon Catalog. Ask your Ford Dealer for a copy.*

18 FAIRLANE POWER TEAMS

ENGINES

Fairlane Six*

Challenger V-8

Challenger Special V-8

Challenger High Performance V-8

TRANSMISSIONS

A1, C

B1, C, D

B1, C, E

C, E

*Standard Equipment Key: *Engine (all models); †Transmission (as indicated)*

A—3-Speed Manual

B—Synchro-Smooth Drive (Std. on Synchro-Smooth 3-Speed manual)

C—Cruise-O-Matic Drive **D—Overdrive** **E—4-Speed Manual**

REAR AXLE: Semi-floating type with deep throat hypoid gears. Shackle-mounted drive pinion with 3rd-lub bearings. Induction hardened, forged shafts with permanently lubricated wheel bearings.

FRONT SUSPENSION: Ball-joint type with coil springs mounted on upper arms. Anti-lift-rod for anti-dive control. 30,000-mile (or 3 years) full-flow oil filter. 30,000-mile (or 3 years) full-flow oil filter. Link-bars, rubber bushings (rubber bushings have all-weather fluid for better year-round ride control).

REAR SUSPENSION: Asymmetrical design with rear axle located forward of spring center for anti-dive and anti-squat resistance on braking and takeoff. Extra-long, leaf-type springs with wide spring bases for more shock, levelness ride. All-weather shock absorber fluid for more uniform ride control.

STEERING: Recirculating-ball type steering gear provides easy handling. Linkage system fabricated for 36,000-mile (or 3 years). Overall steering ratio 27.8 to 1. Turning diameter 40.2 feet. Improved power steering option has flexible steering shaft coupling to reduce road shock to steering wheel; ratio 20 to 1.

BRAKES: Self-adjusting, self-energizing design. Brakes adjust automatically when applied while car is moving backwards. 10-inch composite drums, grooved for extra cooling. Total lining area, 194 sq. in.

TIRES: New low-profile design, 4-tyr rotating blackwall hubless with Tires reason cost. Safety-type rims. Basic size: 8.80 x 14. Optional: 7.35 x 14. Tire sizes are determined in part by special equipment such as air conditioning. See your Ford Dealer for complete details.

DIMENSIONS AND CAPACITIES: Overall length 198.8", height 55.7" (hooded), 54.6" (hoodless); width 70.0", wheelbase 110.0", track—front 57.0", rear 57.0"; fuel 16 gal.; oil 4.5 qt. (Std.), 5 qt. (V-8); cooling system (with heater) 9.5 qt. (Std.), 15 qt. (V-8).

PRICES: Front seat belts, heater and defroster are included as standard equipment on all models. However, heater and/or seat belts may be deleted on car order if desired at an appropriate price reduction. All optional equipment and accessories, if included or referred to as options, optional, or available, are at extra cost. For the price of the Fairlane with the equipment you desire, see your Ford Dealer.

TWICE-A-YEAR MAINTENANCE: '65 Fairlanes are designed to go 8,000 miles (or 6 months) between oil changes and minor chassis lubrications; 36,000 miles (or 3 years, whichever comes first) between major chassis lube. Other '65 Fairlane service-savers include 36,000-mile (or 2-year) engine coolant-antifreeze, self-adjusting brakes, long-life Six-Ful battery, sealed alternator, rust- and corrosion-resistant aluminum muffler and galvanized major underbody parts. The '65 Fairlane needs so little service it's just good sense to see that it gets the best—at your Ford Dealer's. Its factory-trained mechanics and special tools add up to a great service combination you can get nowhere else!

NEW CAR WARRANTY: Fairlane total-car quality makes this total-car warranty possible: Ford Motor Company warrants to owners as follows: That for 24 months or for 24,000 miles (13 months or 4,000 miles on Challenger High Performance V-8 engine and related power train components), whichever comes first, free replacement, including related labor, will be made by Ford Dealers of any part with a defect in workmanship or material. Tires are not covered by the warranty; appropriate adjustments will be made by tire companies. Owners will remain responsible for normal maintenance services, routine replacement of parts, such as filters, spark plugs, ignition points, wiper blades, brake and clutch linings, and normal deterioration of soft trim and appearance items. The warranty referred to herein is applicable to products sold in the U.S.A. and in certain neighboring areas.

Comparative information in this catalog was obtained from authoritative sources, but is not guaranteed. The specifications disclosed herein were in effect at the time this catalog was approved for printing. Ford Division of Ford Motor Company reserves the right to discontinue models at any time, or change prices, specifications or designs without notice and without incurring obligation.

Best year yet to go Ford
Test Drive Total Performance '65

FORD

PRODUCTS OF



MOTOR COMPANY

MUSTANG • FAIRLANE • FORD • THUNDERBOLT