

THE NEW WORLD CAR
**FORD
ESCORT**



FORD ESCORT BUILT TO TAKE ON THE WORLD... AND DOING IT.



Above: Escort GLX
3-Door Hatchback in
Bright Red (27)

Front Cover: Escort GLX
3-Door Hatchback in
Bright Yellow (6N)

FORD ESCORT BUILT IN AMERICA TO TAKE ON THE WORLD.



From Ford, the company that put the world on wheels, comes an all-new car designed to keep the world of the 80's on wheels and moving ahead.

Ford Escort is the new World Car. Created by the vast pool of design and engineering talent in the worldwide com-

munity of Ford Motor Company.

Escort is the product of advanced engineering. With front wheel drive traction. New power-efficient 1.6 liter hemispherical head engine. Standard 4-speed manual transaxle with overdrive fourth gear, or optional automatic

with patented "split-torque" feature for fuel economy.

And Escort has a 4-wheel independent suspension that offers a smooth ride. Rack and pinion steering precision. Aerodynamically efficient exterior design. Plus interior roominess classifying Escort as a

"compact" by the EPA. The story of the new Ford Escort is told in greater detail on pages 16-17 (Design) and on pages 18-19 (Engineering). All the world class technology described is available in five model series of 3-Door Hatchback and 4-Door Liftgate body styles. Ten

choices in all.

Before you buy any new car, foreign or domestic, come drive the car that scored the biggest public reception for a new car in Ford history — Escort, the new World Car!

Below: Escort GLX 4-Door Liftgate and 3-Door Hatchback in Silver Metallic (1G)



FORD ESCORT GLX

3-DOOR HATCHBACK



Escort 3-Door Hatchback is a fine combination of convenience and versatility for your everyday driving needs.

Each bucket seat has an automatic inertia seat back release to make entering or leaving the rear compartment easy. And, with the one-hand quick-release feature, the rear seat folds down to give you 25.5 cu. ft. of very handy cargo space.

Drive a 3-Door Hatchback in first class GLX style. Standard are reclining low-back bucket seats in your choice of GLX ribbed vinyl, shown in Caramel (ET), or dual tone knit cloth with vinyl.



Color-keyed seat belts with tension relievers are included. GLX door trim features soft vinyl in a "pillowed" style plus carpeted lower panel. Passenger compartment carpeting is deluxe. Instrument panel has woodtone cluster and radio surround appliques.

And there's a long list of options to take you to the very top of Escort GLX distinction. Flip-up open air roof. Fingertip speed control. Rear window wiper/washer. Power steering.



Power front disc brakes. Air conditioner. Pivoting front vent windows. A great selection of stereo sound systems. Plus many more, all available to make Escort a World Car of your own design.

Left: Escort GLX 3-Door Hatchback in Tan (6U)

Below: Escort GLX 3-Door Hatchback in Black (1C)

See Escort Data Center (pages 20-21) for Notable Standard Features, Measurements and EPA information. Some items shown are optional; see Options Selector for a complete list (pages 22-23).



FORD ESCORT GLX

4-DOOR LIFTGATE



GLX is the new World Car at its finest. All the advanced engineering and fun-to-drive attributes of

every other Escort, plus an array of standard features that make GLX impressive by any comparison.

The 4-Door Liftgate demonstrates how convenient and spacious the new World Car is. Four doors make for easy entry and exit. And there's a substantial 28 cu. ft. of cargo space with the rear seat in place. Fold it down and you have more than twice the amount of space — 58.3 cu. ft.

Notable among many handy features is the color-keyed window shade-type cargo area cover, standard on all 4-Door Liftgate models. It rolls out to conceal valuables in the cargo area; rolls up compactly when not in use.

Among the additional features included as standard in GLX models are dual color-keyed remote-control mirrors. Electronic digital clock. Console with graphic display warning module.

Roof grab handles. All Light Group items. Interval windshield wipers. Also, deluxe sound insulation package.

Above: Escort GLX 4-Door Liftgate in Dark Brown Metallic (5Q)

See Escort Data Center (pages 20-21) for Notable Standard Features, Measurements and EPA Information.* Some items shown are optional; see Options Selector for a complete list (pages 22-23).



INSIDE THE NEW FORD ESCORT.



Escort represents a remarkable achievement in space efficiency. Escort is classified as a "compact" by the EPA because of its exceptionally roomy interior.

Displayed here is the top-line Escort GLX interior, which features fully reclining low-back bucket seats in your choice of vinyl or cloth and vinyl, unique GLX door trim and much more.

The reclining seat backs are also available with standard high-back bucket seats (see listing in Options Selector for further details).

Escort's bucket seats are a new design. Cushion height and seat back angle are specially body-contoured for comfort. And forward-backward seat adjustment on a long 7-inch track provides the measure of leg room that's right for you.

In addition, bucket seats in the 3-Door Hatchback have an automatic inertial seat back release for the convenience of rear seat passengers.

And the Escort interior features a wide, high windshield plus large side and rear windows.

At the wheel, you'll especially appreciate Escort's many standard features, as well as the options of your choice.

Here is a small sampling of what Escort models offer, as taken from the listings in the Data Center (pages 20-21) and Options Selector (pages 22-23).

From the Data Center:

■ Controls on two column-mounted levers: Front lever — turn signal, horn, headlamp dimmer, (plus flash-to-pass signal); Rear lever —

windshield washers and wipers

■ Fluidic windshield washer system — a single nozzle sprays a wide pattern of large droplets over most of the windshield area.

■ AM radio (may be deleted for credit)

■ Bronze-tone instrument cluster with "soft feel" padding, integral coin trays (except with optional stereo systems)

■ Day/night rearview mirror

■ Inside hood release

■ Front armrests with integral door pull handles

■ Anti-theft door lock buttons

■ Folding second seat with single-hand release

From the Options Selector:

■ Air conditioner. All-new system for Escort specially designed for fast-cooling operation.

■ Fingertip speed control. With controls conveniently located on steering wheel spokes.

■ Console. Featuring graphic warning display module: warning lights signal "low fuel," "low washer fluid," and indicate when headlamps, parking lamps or tail-lamps are out.

■ Instrumentation group. Tachometer, trip odometer, and temperature gauge (std. SS).

■ Electronic digital clock. With elapsed time and date readout features (std. GLX).

■ Pivoting front vent windows

■ Rear window wiper/washer

■ 4-spoke steering wheel (std. GLX, SS)

■ Deluxe color-keyed seat belts. Featuring mechanical tension reliever that allows free forward movement.



FORD ESCORT GL



Escort GL 3-Door Hatchback or 4-Door Liftgate. In either style, GL blends good looks, inside and out, with a high level of comfort and convenience.

Outside, GL features brushed aluminum "B" pillar appliques, bright window frames, body-side moldings with argent vinyl inserts, dual accent stripes, deluxe bumper rub strips and end caps, bright wheel hub and nut covers plus trim rings.

And inside, experience the firm support of body-contoured reclining high-back bucket seats, shown here in Black basket-weave vinyl (CA). GL's handsome interior also includes door trim



panels with bright accents, deluxe color-keyed belts with tension relievers, a handy console, 4-spoke soft-feel steering wheel, RH visor vanity mirror, rear seat ashtrays, and more.

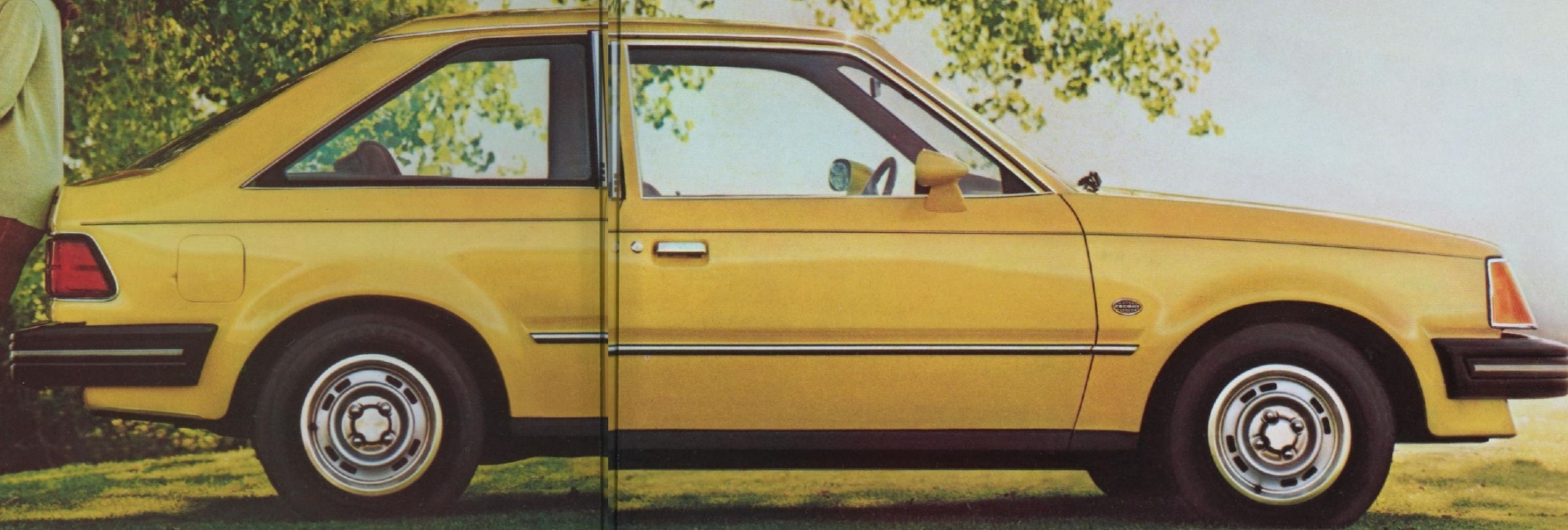
Escort GL. So stylish and affordable, you may soon see the new World Car everywhere you go.

Right: Escort GL 4-Door Liftgate in Bright Blue Metallic (3M)

Below: Escort GL 3-Door Hatchback in Bright Yellow (6N)



See Escort Data Center (pages 20-21) for Notable Standard Features, Measurements and EPA information. Some items shown are optional; see Options Selector for a complete list (pages 22-23).





FORD ESCORT L



Escort L. Practical and attractive, with all the high standards of value built into the new World Car from Ford. The new compound-valve hemispherical head (CVH) 4-cylinder engine delivers fuel economy* to keep you on top of today's high gas prices. And Escort puts you in command of the road. With sure-footed front wheel drive traction. Four wheel independent suspension system. Front stabilizer bar. Rack and pinion

steering precision. And the special traction of new all-season steel-belted radial tires. A test drive at your Ford Dealer will show you the world of difference that better ideas make in a Ford Escort. Above: Escort L 3-Door Hatchback in Tu-Tone Black (1C) over Silver Metallic (1G) Right: Standard Escort high-back bucket seats in Medium Red slot-pattern vinyl (AD)



FORD ESCORT SS

Escort SS. In looks and equipment, a special Escort. With the Handling Suspension that is an option with other Escorts. Larger P-metric steel-belted radial tires. Spirited in looks. With sporty blackout trim. SS tape stripes and decals. Dual black remote control sport mirrors. SS seat trim on fully reclining high-back buckets. Sports instrumentation. And much more, as you can see in the Data Center (pages 20-21).

Escort SS. Spirited all the way, in either 3-Door Hatchback or 4-Door Liftgate. Above: Escort SS 4-Door Liftgate in Bright Red (27) Right: Escort SS 3-Door Hatchback in Silver Metallic (1G) See Escort Data Center (pages 20-21) for Notable Standard Features, Measurements and EPA information.* Some items shown are optional; see Options Selector for a complete list (pages 22-23).



FORD ESCORT: WORLD CAR DESIGN

Escort's design began with many different points of view. What eventually emerged was the shape of a true world car.

FASHIONING A WORLD CAR DESIGN

To create a true international design for Escort, Ford technicians were given the assignment in three separate locations — Dearborn, Michigan, Merkenich, Germany and Turin, Italy. They worked separately but freely consulted each other, exchanging ideas, drawings and specifications.

Prototype cars of selected designs were built and evaluated in market research clinics in both Europe and America. Then the European Escorts came to America and the American Escorts went to Europe for further research evaluation.

In all cases, competitive cars were displayed alongside the Escorts in order to obtain the most accurate impressions of the World Car's strengths and weaknesses — in exterior size and appearance, interior space and convenience.

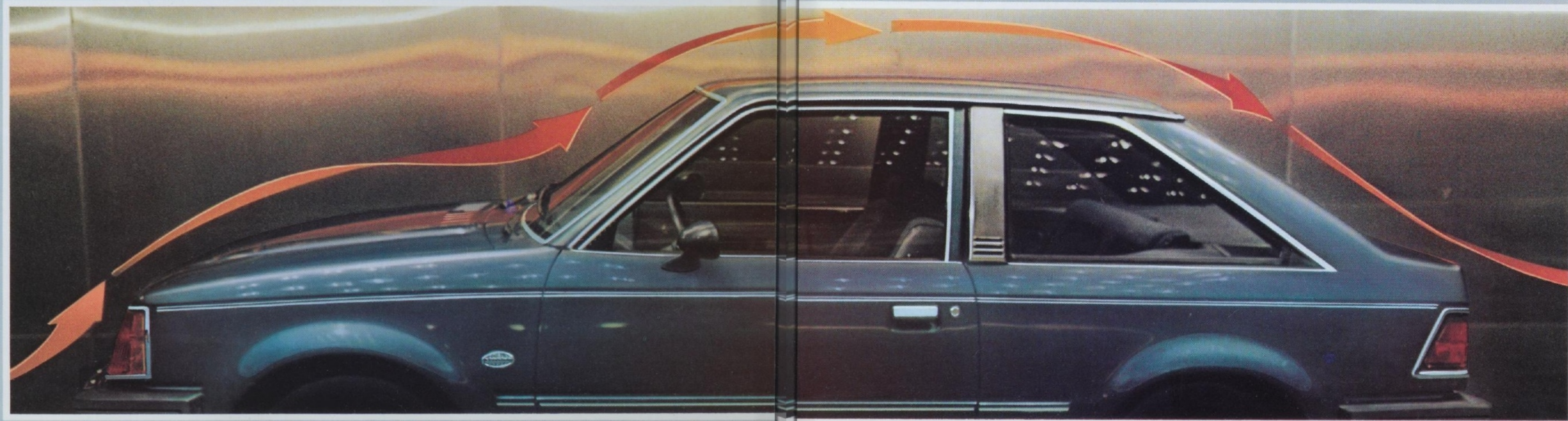
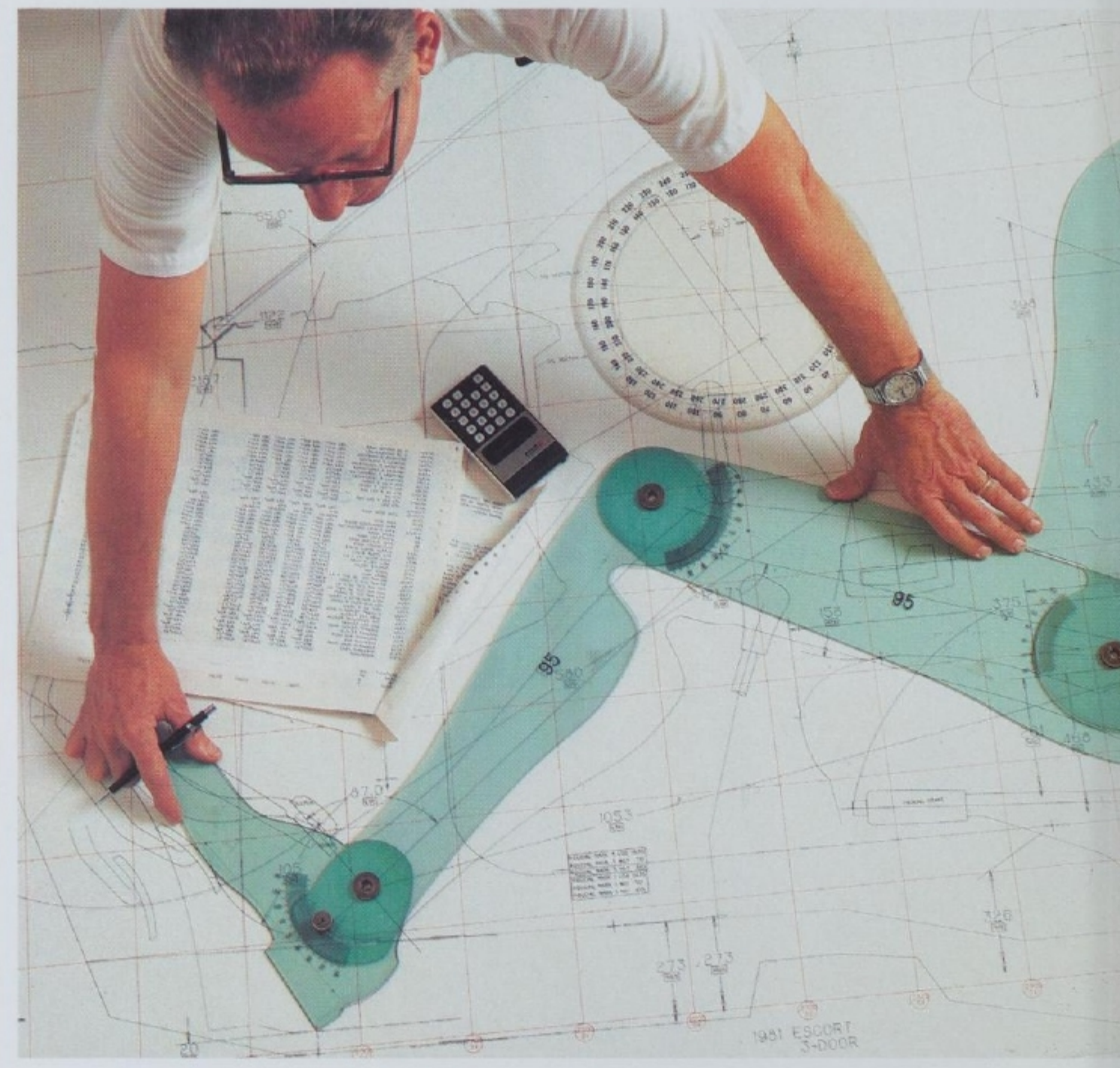
The result of this extensive research was a beautifully distinctive, highly functional design in two versions that reflect the different prefer-

ences for style and trim levels here in America and overseas.

WATCHING THE AIR FLOW

The science of aerodynamics — Airflow Management as it's called at Ford — played a key role in Escort's design.

Aerodynamics was taken so seriously from the start that Escort, in scale models and full-size prototypes, was put through more than 1,000 hours of wind tunnel testing. The result: a remarkably low .40 air drag coefficient (based on European measurement system), making Escort as aerodynamic as some leading sports cars.



Aerodynamics, of course, doesn't deal only with air drag. All aspects of air flow are studied — over, under, around and through the vehicle. And while the overall shape of the car is certainly important, the job isn't complete until refinements are made in many small areas: edge of the hood and decklid, parking lamps, valance panel, grille opening, "A" and "B" pillars.

Considering the fuel economy benefits derived from aerodynamics efficiency the time and effort invested were well worth it. Because it takes horsepower to combat air resistance. Fuel economy increases with better aerodynamics because less horsepower is needed at higher speeds.

ESCORT'S TWO SPACIOUS DIMENSIONS

Achieving a highly space-efficient interior was a principal objective in the development of the new world car.

For example, on a 94.2-inch wheelbase and just 163.9 inches long, the Escort 3-Door Hatchback interior is classified as "compact" by the EPA.

And the usual compact exterior dimensions give way to a sense of spaciousness once you're inside. That's the experience of Ford's international design know-how, with many years of packaging small cars.



Two main reasons account for Escort's ample space. One is front wheel drive, which provides a flatter floor. The other is the independent rear suspension system (IRS), which, having no rear axle, allows the rear seat to be placed farther back and the cargo load floor to be lowered. In fact, Escort 3-Door has more interior volume than many popular hatchbacks, either import or domestic.

Escort is available in two body styles. The 3-Door Hatchback with a 102-cu.-ft. EPA interior volume index, and the 4-Door Liftgate with 115 cu. ft. index. With the rear seat down, the 3-Door's cargo capacity increases from 16.2 to 25.5 cu. ft., and the 4-Door's capacity more than doubles from 28 to 58.3 cu. ft.

NOTABLE ESCORT DESIGN FEATURES

- ROOMY INTERIOR, THE ACHIEVEMENT IN PART OF FRONT WHEEL DRIVE AND THE INDEPENDENT REAR SUSPENSION SYSTEM
- AERODYNAMIC LINES FOR LOW AIR RESISTANCE
- SLANT FRONT END WITH RECESSED HEADLAMPS
- DISTINCTIVE REAR END TREATMENT WITH WRAPAROUND TAILLAMPS
- LOW BELT LINES
- LARGE GLASS AREA ALL-AROUND
- THIN REAR PILLARS

FORD ESCORT: WORLD CAR ENGINEERING

COMPOUND-VALVE HEMISPHERICAL HEAD ENGINE

The 1.6 liter compound-valve hemispherical (CVH) engine, the pulse of Escort's advanced technology, incorporates a number of outstanding design features.

- Hemispherical (half-round) heads and sculptured piston crowns produce an intended "squish" effect on the fuel and air mixture. This turbulence forces the fuel and air to the center of the chamber for more complete burning.

- Intake and exhaust valves are angled at about 45 degrees in two planes (i.e. compound-valves) to maximize their size, thus providing a free flow of air.

- A central spark plug location allows a more direct power charge

performance hemi-head concept to a small displacement engine. Their task was to determine an engine design for the 80's that would deliver good performance, high fuel economy, and low emissions.

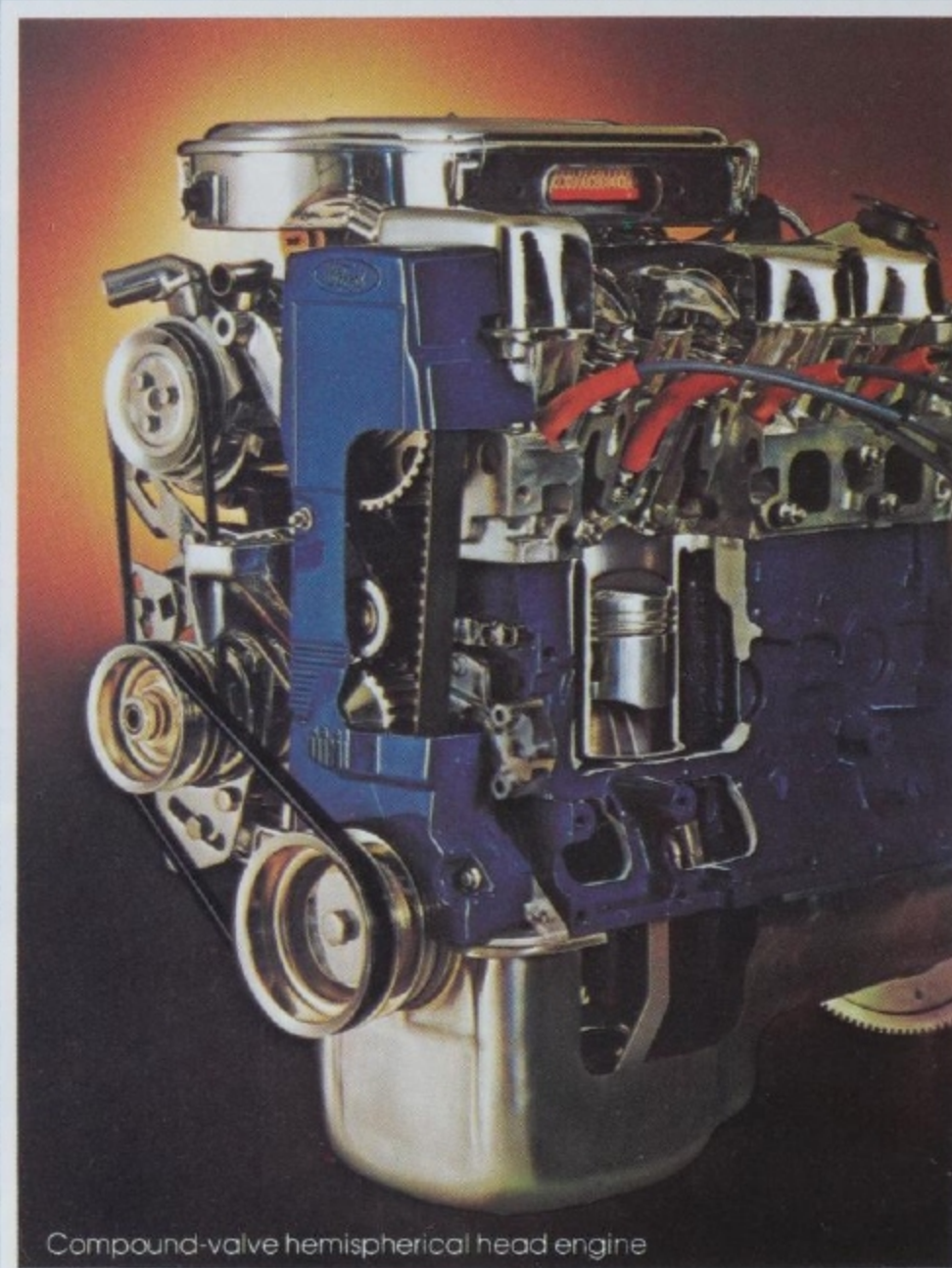
To expand the scope of this research, 25 existing American, European and Japanese engines were torn down, examined, measured, weighed and analyzed. From this study three basic designs were identified, then engineered and built: the hemi-head engine, the conventional wedge configuration, and the pre-chamber design.

"Engine mapping" — developed by Ford — was invaluable in making the final selection. This technique enabled the engineers to plot (on a 2000-point matrix) a complete computerized picture of each proto-



Hemi-head combustion chamber for efficient combustion.

type engine's total potential — speed, torque, fuel consumption, emissions control, and overall performance



Compound-valve hemispherical head engine

The results of tests conducted both in the laboratory and on the road confirmed the advantages of the hemispherical head engine. The final result: an advanced, power-efficient engine delivering the high fuel economy needed for the 80's.

Escort's mileage ratings exceed those of many less roomy subcompacts, imported or domestic.

44
EPA EST HWY*

30
EPA EST MPG*

*Applicable only to sedans without power steering or air conditioning. For comparison with other cars. Figures are for standard 1.6 liter 4-cylinder engine with 4-speed manual transmission. Your mileage may differ depending on speed, trip length and weather. Actual highway mileage will probably be lower than estimate. California EPA estimates: 42 Hwy [28] MPG.

compact component called the transaxle. It's a handy term for two sides of an equation: Transmission + Axle = Transaxle.

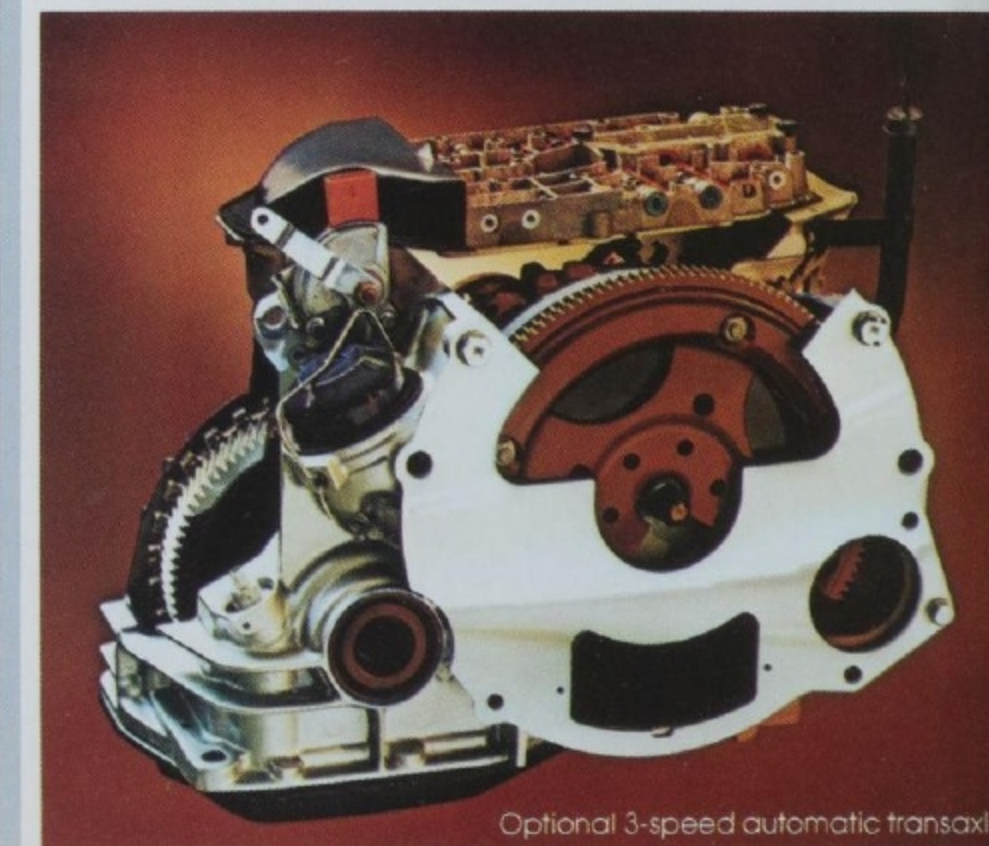
Escort's standard transaxle is a 4-speed (MTX) developed in the U.S. with engineering assistance from England, Germany and Japan. MTX incorporates a number of important features. Closed end case construction to prevent oil leaks. Single-rail shift mechanism requiring no adjustment. Wide-ratio gearing that provides low-end performance and, with the overdrive fourth gear, excellent fuel economy at cruising speeds.

The optional automatic transaxle (ATX) is innovative, like nothing else available in any car built in America.

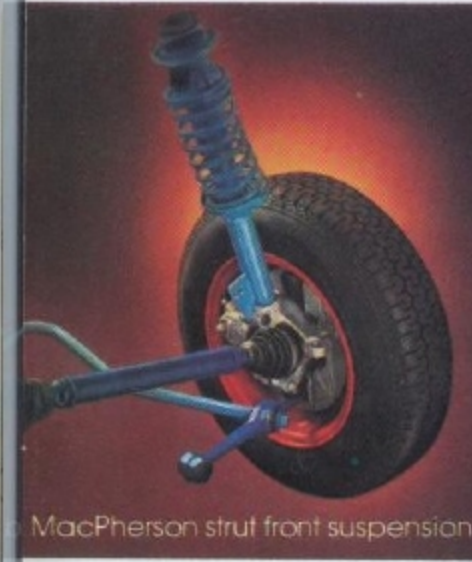
Most automatics are less efficient than manual transmissions because of power loss caused by hydraulic slippage in the torque converter. To reduce this inefficiency, Ford engineers came up

FRONT WHEEL DRIVE AND ADVANCED TRANSAXLES

The benefits of the front wheel drive car — good traction primarily — are transmitted through a



Optional 3-speed automatic transaxle



MacPherson strut front suspension



Independent rear suspension

with a patented "split-torque" concept.

In second and third gears, a splitter gear transmits most of the torque (power output) mechanically instead of hydraulically. Result: less power waste for better fuel economy.

FOUR-WHEEL INDEPENDENT SUSPENSION SYSTEM

Escort's 4-wheel independent suspension is another dramatic example of world class automotive technology. It's available on no other American-built car in Escort's class.

Front suspension is the MacPherson strut system with stabilizer bar. The MacPherson suspension includes, among several important features, a "zero scrub" geometry (upper right). This means that the turning axis of the suspension strut (blue) intersects the road at the center line of the tire (yellow).

The independent rear suspension (IRS) was chosen for Escort by Ford engineers who are well acquainted with sophisticated suspensions in small European cars and with the narrow, tightly curved roads on which they're driven.

And IRS offers a smooth ride which American drivers are accustomed to. With IRS, there's no

axle linking the rear wheels. Each wheel has its own separate suspension — transverse arm, tie rod, shock strut, plus a coil spring mounted on the transverse arm under the frame to reduce unsprung weight.

STEERING, BRAKES, TIRES

Escort's other major chassis features are designed to complement the efficiency of the all-new suspension system.

Rack and pinion steering — which provides more direct linkage between the steering wheel and front wheels — features new high-efficiency gears engineered for precise response.

Front disc brakes, tested extensively in the mountain passes of Germany and Austria, use a compact version of Ford's pin slider-type caliper mounting designed to reduce brake drag.

And standard tires are new all-season P-metric steel-belted radials with European wraparound tread design for traction on slippery surfaces. P-metric radials have high inflation pressure (up to 35 psi) and low rolling resistance tread compounds which contribute to Escort's fuel economy.



"Zero scrub" front suspension geometry



Rack and pinion steering, front disc brakes

FORD PAID REPAIR PROGRAMS AFTER THE WARRANTY PERIOD

Sometimes Ford offers adjustment programs to pay all or part of the cost of certain repairs. These programs are intended to assist owners and are in addition to the warranty or to required recalls. Ask Ford or your dealer about such programs relating to your Ford or Lincoln-Mercury vehicle.

To get copies of any adjustment program for your vehicle or the vehicle of interest to you:

Call Ford toll-free at 1-800-241-3673. Alaska and Hawaii call 1-800-243-3711 and in Georgia call 1-800-282-0959.

Or write Ford at:

Ford Customer Informa-

tion System Post Office Box 95427, Atlanta, Georgia 30347.

We'll need your name and address; year, make, and model vehicle, as well as engine size; and whether you have a manual or automatic transmission.

TECHNICAL SERVICE BULLETINS

All vehicles need repairs during their lifetime. Sometimes Ford issues Technical Service Bulletins (TSBs) and easy-to-read explanations describing unusual engine or transmission conditions which may lead to costly repairs, the recommended repairs, and new repair procedures. Often a repair now can prevent a more serious repair later. Ask Ford or your dealer for any such TSBs and explanations relating to your Ford or Lincoln-Mercury vehicle.

To get copies of these Technical Service Bulletins and explanations for your vehicle or the vehicle of interest to you:

Call Ford toll-free at 1-800-241-3673. Alaska and Hawaii call 1-800-243-3711 and in Georgia call 1-800-282-0959.

Or write Ford at:

Ford Customer Information System Post Office Box 95427, Atlanta, Georgia 30347.

We'll need your name and address; year, make, and model vehicle, as well as engine size; and whether you have a manual or automatic transmission.

NOTE: Chrome plating, wherever shown in engine and transaxle illustrations, is for display purpose only.

FORD ESCORT DATA CENTER

An inside look at Ford Escort: where better ideas mean added value as they contribute to your driving pleasure.



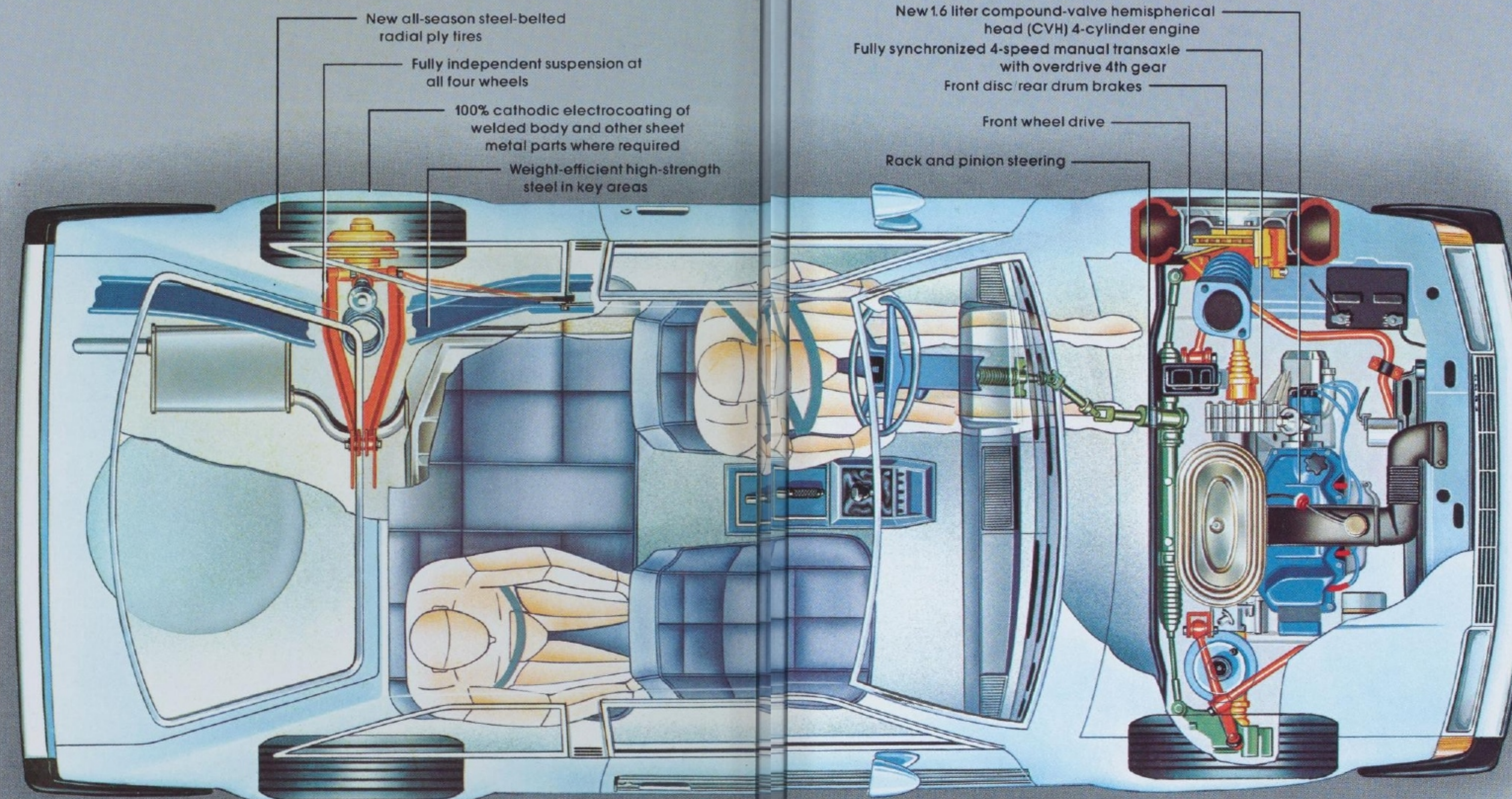
The standard equipment of any car is often a reliable yardstick of its value. Read over this list. Then compare Escort's standard features with any other car in its class.

ESCORT 3-DOOR HATCHBACK AND 4-DOOR LIFTGATE

■ Front wheel drive
■ 1.6 liter compound-valve hemispherical (CVH) 4-cylinder engine with DuraSpark Electronic Ignition ■ Electronic voltage regulator
■ Maintenance-free battery ■ 4-speed manual overdrive transmission with self-adjusting clutch linkage ■ 4-wheel independent suspension system with true MacPherson strut front system and stabilizer bar; rear coil springs ■ Front disc brakes (3-Door) power front discs (4-Door) ■ All-season P-metric 13" BSW steel-belted radial tires ■ Rack and pinion steering ■ Bright bumpers with short black end caps ■ Black LH door-mounted mirror ■ Single rectangular halogen headlamps ■ 2-speed windshield wipers with fluidic washer system ■ Escort Sound Insulation Package ■ Steering column-mounted controls — Front lever: Turn signal/horn/headlamp dimmer with flash-to-

pass feature; Rear lever: Windshield washer/wipers ■ Ram-air forced ventilation ■ 3-speed heater/defroster blower ■ Day/night inside mirror ■ Inside hood release ■ AM radio (may be deleted for credit) ■ Continuous loop belts ■ Cigarette lighter ■ Anti-theft door lock buttons ■ Courtesy light actuated by driver and passenger door switches ■ Liftgate ajar warning light (4-Door) ■ Fully trimmed cargo area ■ Color-keyed cargo area cover, window shade type (4-Door) ■ High-back vinyl bucket seats ■ Inertia seat back releases (3-Door) ■ Folding second seat (single hand release) ■ Black 2-spoke steering wheel ■ Bronze tone instrument cluster with color-keyed, "soft feel" padding, integral coin trays ■ Color-keyed soft wrapover door trim panels, black window regulator handles ■ Color-keyed sun visors and vinyl headliner ■ Coat hooks ■ Front armrests with integral door-pull handles ■ Color-keyed carpeted cargo area package tray (3-Door) ■ Grey load floor mat (3-Door), black load floor carpet (4-Door) ■ Argent grille with bright upper edge molding; argent headlamp doors ■ Bright windshield, backlight and drip moldings ■ Black windshield wiper arms and blades ■ Wraparound amber parking lamps; wraparound tri-color taillamps (all-red on 4-Door) ■ Semi-styled steel wheels (4) with bright argent hub covers ■ Ford's Limited Corrosion Perforation Warranty

ESCORT L
Most standard Escort 3-Door/4-Door features plus these additions or variations: ■ Reclining high-back bucket seats in GL level vinyl trim ■ Deluxe color-keyed belts with tension relievers ■ GL door trim panels with bright window regulator handles ■ 4-spoke "soft feel" steering wheel ■ Console with integral coin slots ■ Visor vanity



plus these additions or variations: ■ Bright grille and argent headlamp doors ■ Bright driver's side door-mounted mirror ■ Brushed aluminum "B" pillar appliques and bright belt moldings ■ Dual accent stripes on bodyside and hatchback/liftgate ■ Black rocker panel paint and black (3-Door) taillamp extensions ■ Black load floor mat

ESCORT GL
Most standard Escort L 3-Door/4-Door features plus these additions or variations: ■ Reclining high-back bucket seats in GL level vinyl trim ■ Deluxe color-keyed belts with tension relievers ■ GL door trim panels with bright window regulator handles ■ 4-spoke "soft feel" steering wheel ■ Console with integral coin slots ■ Visor vanity

mirror ■ Rear ashtrays ■ Deluxe Sound Insulation Package ■ Black load floor carpet (color-keyed in 4-Door) ■ Bright window frames ■ Body-side moldings with argent vinyl inserts ■ Deluxe bumper rub strips and deluxe bumper end caps ■ Front air dam ■ Semi-styled steel wheels (4) with bright nut covers; bright trim rings

ESCORT GLX
Most standard Escort L and GL 3-Door/4-Door features plus these additions or variations: ■ Reclining low-back bucket seats in GLX vinyl or cloth and vinyl seat trim ■ GLX door trim panels, carpeted lower panels ■ Deluxe color-keyed carpeting ■ Wood-tone instrument panel cluster and radio appliques ■ Roof grab

handles with integral coat hooks ■ Interval windshield wipers ■ Electronic digital clock ■ Locking glove box ■ Console with graphic warning display module ■ Light Group: glove box, ashtray, dome/map lights, engine compartment light, cargo area light (4-Door), third door courtesy light switch, headlamps-on warning buzzer ■ Carpet on side walls, lower back panel (3-Door) ■ Dual color-keyed remote control sport mirrors ■ Bumper guards front and rear ■ Larger size tires (P-165) ■ Styled steel wheels (4) with bright trim rings

ESCORT SS
Most standard Escort 3-Door/4-Door features plus these additions or variations: ■ Handling suspension ■ Deluxe

Sound Insulation Package ■ Reclining high-back bucket seats in SS vinyl seat trim ■ Deluxe color-keyed belts with tension relievers ■ SS door trim panels with bright window regulator handles ■ 4-spoke "soft feel" steering wheel ■ Console with graphic display warning module ■ Instrumentation Group ■ Rear seat ashtrays ■ RH visor vanity mirror ■ Black load floor carpet (color-keyed in 4-Door) ■ Special SS blackout treatment ■ Black dual remote control sport mirrors ■ Black rocker panel paint ■ SS tape stripes and decals (bodyside and rear) ■ Deluxe bumper rub strips and deluxe bumper end caps ■ Larger size tires (P-165) ■ Styled steel wheels (4) with argent hubs, bright nut covers and trim rings



MEASUREMENTS

3-DOOR	4-DOOR
Wheelbase 94.2"	94.2"
Length 163.9"	165.0"
Height 53.1"	53.1"
Width 65.9"	65.9"
Front Tread 54.7"	54.7"
Rear Tread 56.0"	56.0"
Cargo Capacity* 16.2/25.5 Cu. Ft. 28/58 3 Cu. Ft.	
Fuel Capacity 10 gal.	10 gal.
Passenger Capacity 4	4

*First figure with rear seat up; second figure with rear seat folded down.



FORD ESCORT MAINTENANCE SCHEDULE—ANOTHER BETTER IDEA

Ford wants to reduce both the frequency and cost of scheduled maintenance on its cars to an absolute minimum. And, compared to just a few years ago, we're making strides in that direction. For example, in 1973, an engine oil change was called for each 4,000 miles. In 1981, Escort oil changes are recommended at 10,000-mile intervals. Other recommended intervals are now 30,000 miles between spark plug changes; 30,000

miles between air filter replacements; 30,000 miles or 30 months between engine coolant replacements. Escort has a chassis lubed for life, self-adjusting brakes and clutch linkage, maintenance-free battery, and more. Recommended scheduled maintenance — as specified in the owner's manual — averages less than one hour for each year of driving (10,000 miles), based on Ford's current labor time standards. We think this kind of maintenance schedule rates as a Ford Better Idea — and we're working constantly to make it even better!



FORD LIMITED CORROSION PERFORATION WARRANTY

Ford Motor Company provides a 3-year, unlimited mileage corrosion perforation warranty on all new model cars sold in the 50 United States. The warranty states that any part which, in normal use, rusts through from corrosion within three years of retail delivery or first use will be repaired or replaced free of charge by the selling dealer after inspection by a Ford representative. Of course, exhaust system components or parts which develop corrosion perforation caused by accidents or other damage are not covered.



COLORS AND TRIMS

As you've probably already noted, '81 Escort car colors and interior trims are referred to by their order codes. Example: Polar White (9D). On the printed page, of course, colors are at best only representative of the original. For this reason, we've included the codes wherever possible so that you can more easily check out a particular color or trim. With the code as a guide, your Ford Dealer can show you actual samples of Escort paint colors and trim materials.



"ASK YOUR FORD DEALER"

Every effort has been made in preparing this catalog to provide you — in one convenient place — the most complete and current information on the new Ford Escort. Following publication, however, certain changes in standard equipment, options, model availability, prices and the like, may have occurred which would not be included in these pages. In such cases, it's good to remember that your best source is also closest to you. It is your local Ford Dealer, who has the most up-to-date information first and who is always ready to answer your questions about the fine Ford products he sells.

FORD ESCORT OPTIONS SELECTOR

Selecting options for your new Escort can be doubly rewarding. With your selection, you can personalize your Escort. And, by adding to the actual dollar value in the beginning, options can contribute to your trade-in value when it's time for another new Escort. The '81 Escort options list is as varied as it is long. See for yourself.

AUDIO

- AM/FM Monaural Radio
- AM/FM Stereo Radio*

(A) AM/FM Stereo Radio with Cassette Tape.* Uses space-saving 60-minute compact cassette tapes. ■ Premium Sound System. ■ Dual Rear Speakers

*Dual speakers, front and rear with fader controls, included.

APPEARANCE

- Deluxe Seat Belts (with tension reliever). Standard in GL, GLX, SS. ■ Dual Color-Keyed Remote Control Sport Mirrors. Standard on GLX and SS. Black on SS. ■ Glamour Paint, Red Glow (2H). Medium Fawn Glow (55). ■ Tu-Tone Paint/Tape Treatment. Black over



Silver (1C/1G), Dark Blue Metallic over Bright Blue Metallic (3D/3M), Dark Brown Metallic over Tan (5Q/6U).

(B) Squire Wagon Option (woodgrain vinyl side panels and rails, bright bodyside molding with brown vinyl insert, deluxe luggage rack). Available on GL and GLX 4-Door Liftgate.

COMFORT

(C) Air Conditioner. All-new fast cooling system for hot summer days. Heating in winter. Defrosting, defogging as desired. Tinted glass recommended. ■ Tinted Glass — Complete.

(D) Flip-Up Open Air Roof. Opens part way for extra ventilation; can be removed for that open-

air convertible feeling. ■ Remote Control Quarter Windows (3-Door) ■ Pivoting Front Vent Windows ■ Reclining Front Seat Backs. Adjust to 15 positions. Available with high-back bucket seats. Standard in GL, SS and GLX. ■ Reclining Low-Back Bucket Seats. Available in GL and SS. Standard in GLX.

ESCORT INTERIORS

Escort/Escort L — High-back vinyl bucket seats standard; cloth and vinyl trim optional. Reclining seat backs available.

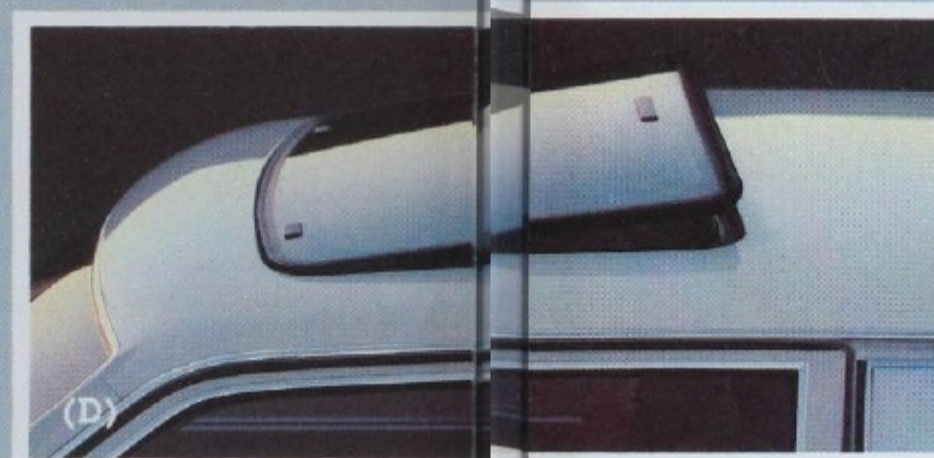
Escort GL/SS — Reclining high-back vinyl bucket seats standard; cloth and vinyl trim optional. Available reclining low-back bucket seats in standard vinyl or optional cloth and vinyl.

Escort GLX — Reclining low-back bucket seats in choice of vinyl or cloth and vinyl.

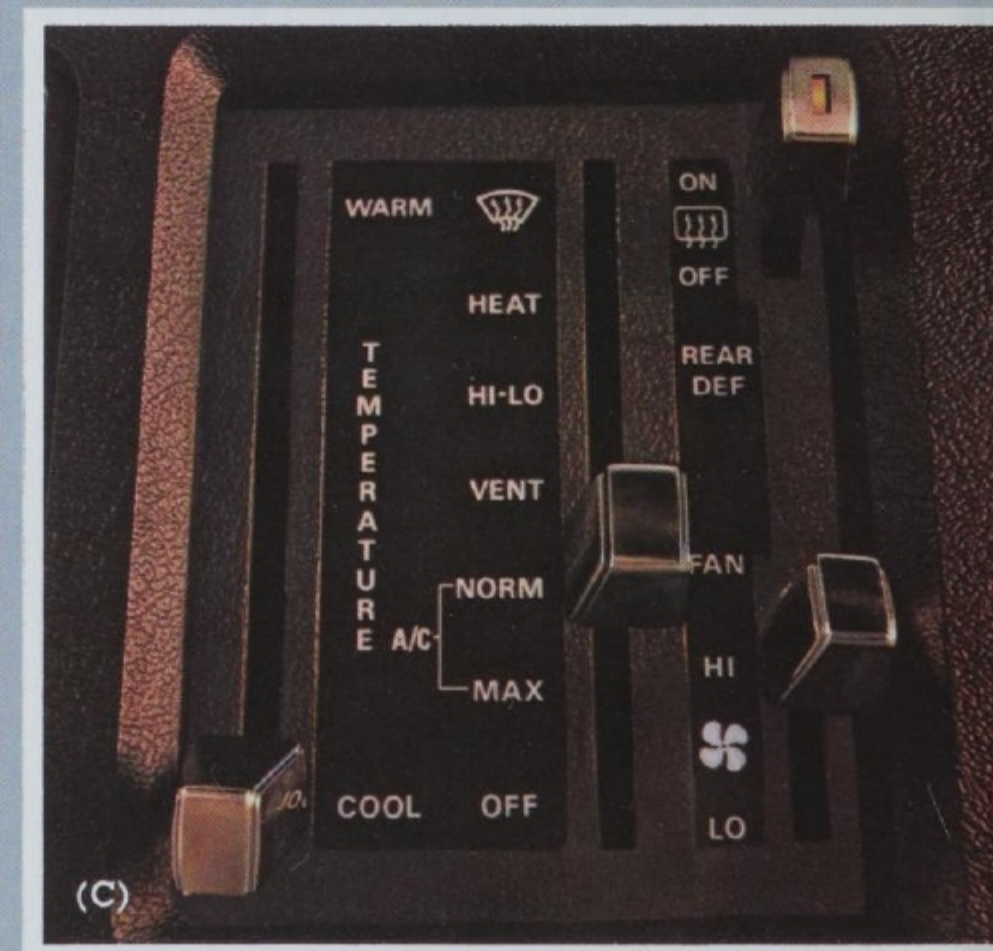
CONVENIENCE

(E) Deluxe Luggage Rack. Roof-mounted. Four Seasons bike and ski attachments available at your Ford Dealer.

(F) Fingertip Speed Control. Set any safe speed above 30 mph and speed control maintains it.



Great convenience, and holding steady speed helps save gas. Pressing brake pedal deactivates control. Touch of "resume" button reestablishes speed set prior to braking.



(G) Console. Includes graphic warning display module that signals "low fuel," "low washer fluid," and indicates when "headlamps," "parking lamps," "taillamps" are out. Standard in GLX, SS. ■ Roof Air Deflector (4-Door) ■ Electric Rear Window Defroster

clearview of traffic behind you. ■ Extended Range Fuel Tank, 11.3 gallons. (See your Ford Dealer for availability.)

PERFORMANCE

- Split-Torque Automatic Transaxle. New split-torque design with automatic gearshifting.
- Heavy-Duty Battery
- Handling Suspension (larger front stabilizer bar, heavy-duty shocks, stiffer springs front and



(H) Instrumentation Group (tachometer, trip odometer, temp. gauge). Standard in SS. ■ Electronic Digital Clock. Standard in GLX. ■ Light Group (glove box, ashtray,



rear). Includes styled steel wheels with trim rings. Standard in SS. ■ Engine Block Immersion Heater. Recommended for driving in extremely cold regions. ■ Altitude Emission Package ■ California Emissions System

POWER ASSISTS

- Power Brakes
- Power Steering

PROTECTION

- Appearance Protection Group (door edge guards, front floor mats, license plate frame, glove box lock)
- Front Bumper Guards. Standard on GLX. ■ Rear Bumper Guards. Standard on GLX. ■ Bumper Rub Strips. Standard on GL, GLX, SS. ■ Vinyl Insert Bodyside Molding. Standard on GL and GLX. ■ Lower Bodyside Protection. Vinyl coating underpaint along the lower bodysides for protection against stone pecking.



■ engine compartment, ■ cargo compartment in 4-Door, dome/map lights, third door courtesy switch, headlamps-on buzzer). Standard in GLX. ■ Interval Windshield Wipers. Standard in GLX.

(I) Rear Window Wiper/Washer. Rear window wiper and washer operate independently of those up front to give you



TIRES/WHEELS

- Tires: P155/80R13 WSW, P165/80R13 BSW, WSW.

(J) Bright Wheel Trim Rings. Standard on GL, GLX, SS.

(K) Cast Aluminum Wheels

OPTIONS AVAILABILITY

1981 Escort options are not confined to these pages but are shown throughout the catalog. Options, whether or not they are identified, are offered at extra cost. Some options are offered only in combination with other options. Availability of some models and features described here and elsewhere may be subject to delay. Again, consult your Ford Dealer for the latest information.





**EXTENDED
SERVICE
PLAN**

Ford Motor Company's optional Extended Service Plan covers certain selected components on new Ford cars and light trucks for longer than the vehicle's basic warranty. The cost is so moderate for the protection you get that it could pay for itself the first time you need it. Your Ford Dealer will be happy to give you complete details of the Plan, which is available on cars and light trucks sold and normally operated in all 50 United States and Canada.

PRODUCT CHANGES.

Ford Division reserves the right to change product specifications at any time without incurring obligations.

**BUY OR LEASE
A FORD ESCORT
FROM YOUR
FORD DEALER —
A GREAT CHOICE
EITHER WAY!**

**A World of
Better Ideas**



FORD ESCORT

FORD DIVISION

