

---

# LYNX

---



---

FOR 1981 FROM  
LINCOLN  
MERCURY

---



---

# THE WORLD BELONGS TO LYNX

---



Lynx 3-Door



Lynx Station Wagon



Lynx GL 3-Door



Lynx GL Station Wagon



Lynx GS 3-Door



Lynx GS Station Wagon



Lynx LS 3-Door



Lynx RS 3-Door



Lynx RS Station Wagon

Today, when America needs small, high-quality, fuel-efficient cars, Lincoln-Mercury is working to meet that need. Introducing Lynx. A car with the kind of four-passenger comfort, equipment, space, and contemporary styling you'd expect from Lincoln-Mercury.

Lynx is a world-class car. It was conceived, designed, and developed by Ford Motor Company engineers with years of experience worldwide—not only in America, but also in countries such as Germany, Japan, and Great Britain. However, Lynx is built in America to meet America's needs.

Lynx's sophisticated design brings you the technology of front-wheel drive, the riding comfort of four-wheel independent suspension, and the advantage of computer-designed aerodynamics. Lynx creates a special inner world that's a pleasure to be in. It could change the way you look at any automobile.

Lynx is available in three-door hatchback and four-door liftgate station wagon models. Your choices range from Lynx up to the elegant Lynx LS, depending on the level of equipment and luxury you desire.

We invite you to drive and discover: now the world belongs to an American automobile. The world belongs to Lynx.

Some of the equipment shown may be available only at extra cost, and only on specific models. Please see pages 17 to 19 for specific information regarding standard and optional equipment.





MERCURY LYNX GS VILLAGER WAGON in Dark Brown Metallic with optional cast aluminum spoke wheels.



MERCURY LYNX GS 3-door in Dark Red Metallic with full styled steel wheels.



# LYNX WORLD OF ENGINEERING

For all of its styling, comfort, and luxurious appointments, one of the most outstanding aspects of the new Lynx is its innovative technology.

**FRONT-WHEEL DRIVE...** significantly improves traction in rain, snow, and sand. Space-efficient front-wheel-drive design allows more passenger room by reducing the size of the engine compartment and eliminating the conventional driveshaft tunnel.

**1. ENGINE:** Lynx's all-new four-cylinder engine has a sophisticated compound valve hemispherical (CVH) combustion chamber design and overhead cam valve train to achieve high efficiency and optimum power for an engine of its size.

**2. TRANSAXLE:** Lynx features a completely new, fully synchronized smooth-shifting four-speed manual transaxle with an overdrive fourth gear. Its wide-ratio gearing permits fewer engine revolutions at cruising speeds than with a conventional transmission. A compact, innovative new three-speed automatic transaxle is optional. Its revolutionary "splitter" gear set helps eliminate slippage and attain significantly better fuel efficiency than in less sophisticated designs.\*

**3. SUSPENSION:** Lynx's smooth ride and handling are due in part to its

four-wheel independent suspension. This system controls the movement of each wheel independently; thus shock and vibrations are not transmitted from one wheel to another or to the body.

**4. BRAKES:** Standard front disc (shown). Rear brakes are easily checked for lining wear without removing brake drums.

**5. PUSH-IN MINI-FUSE PANEL:** Fuses are replaced easily from front of instrument panel.

**6. AERODYNAMICS:** Lynx has a remarkable .40 wind drag coefficient.\*\* Aerodynamic refinements contribute to improved fuel efficiency.\*

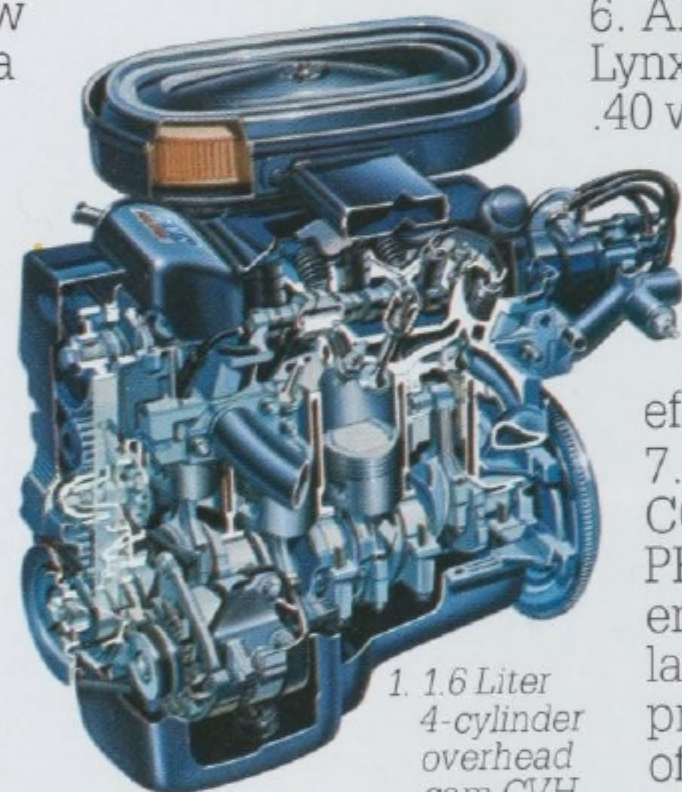
**7. BODY CORROSION PROTECTION...** engineered with the latest technology to provide many years of rust-free ownership. The three-year Corrosion

Perforation Warranty is detailed on page 20. And it's free.

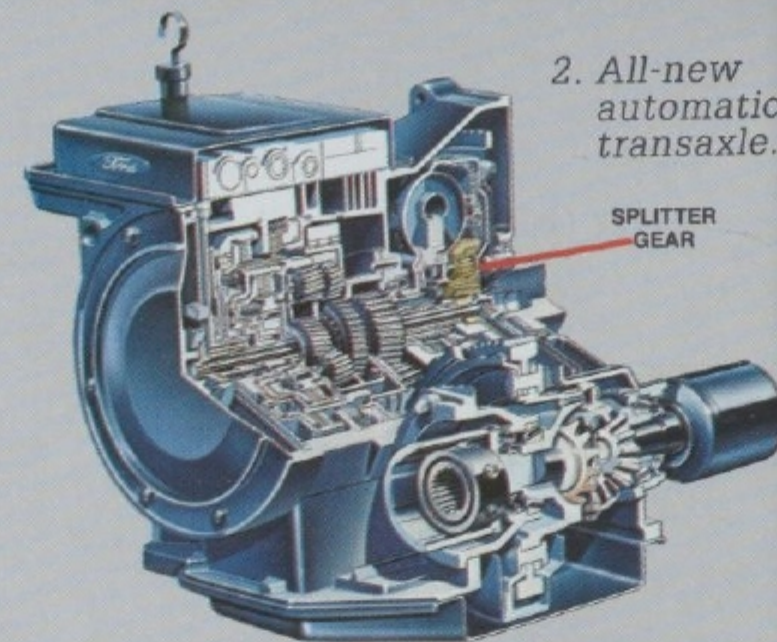
The diagram on the next page tells the inside story on Lynx. But the best way to get acquainted with Lynx's technology (and ride and handling characteristics) is to test-drive one yourself. You'll find you don't have to be an engineer to appreciate great engineering.

\*EPA ratings not available at time of printing. Data may now be available. Please see your Dealer.

\*\*C.D. European.

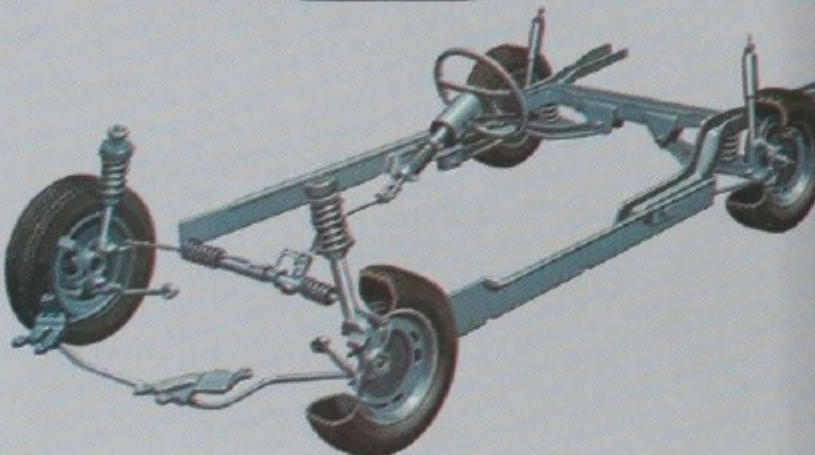


1. 1.6 Liter 4-cylinder overhead cam CVH engine.



2. All-new automatic transaxle.

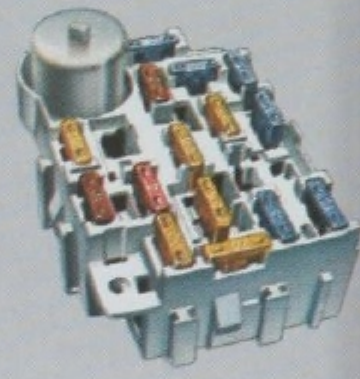
SPLITTER GEAR



3. Fully independent suspension system.



4. Disc brake.

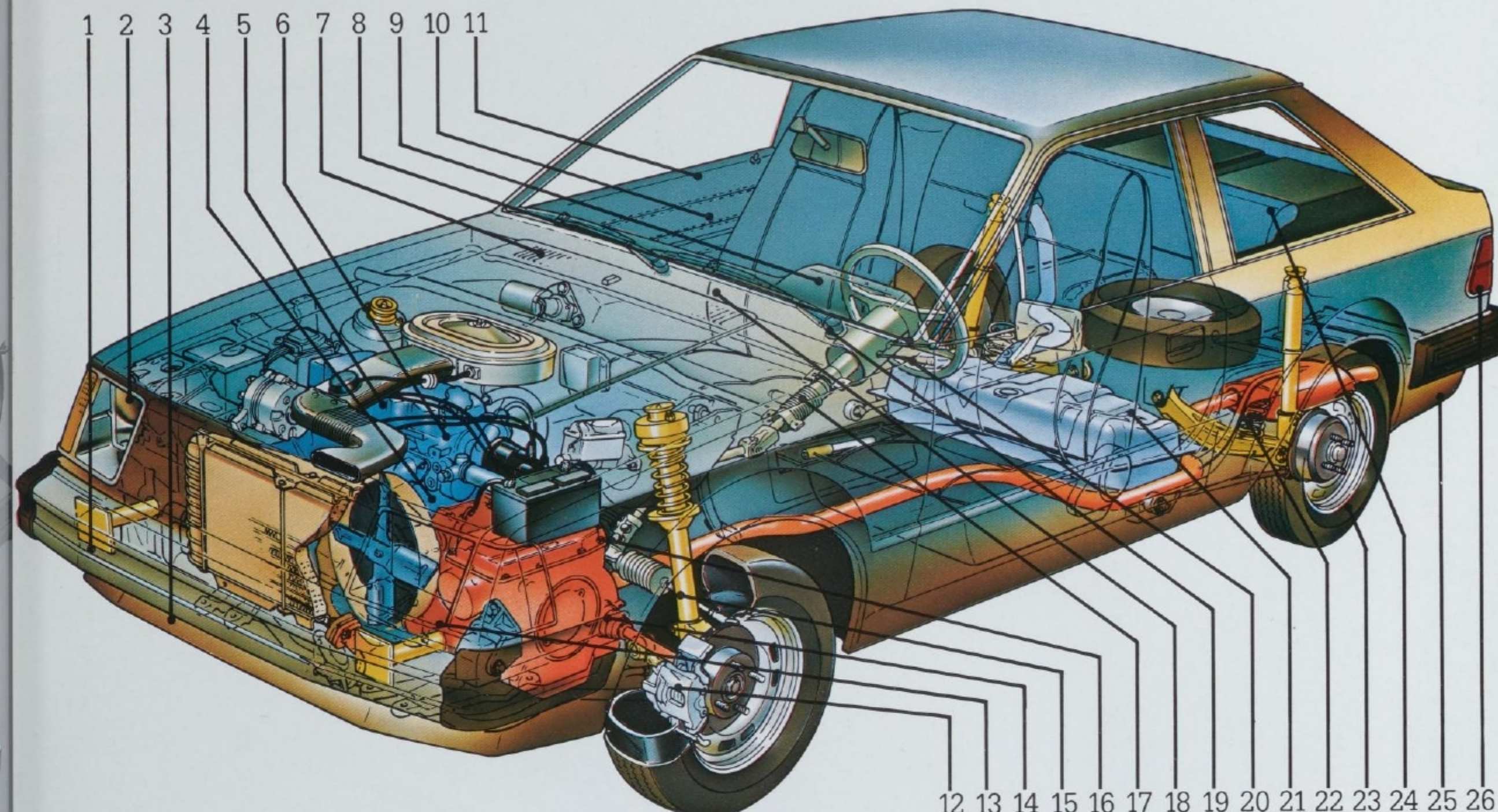
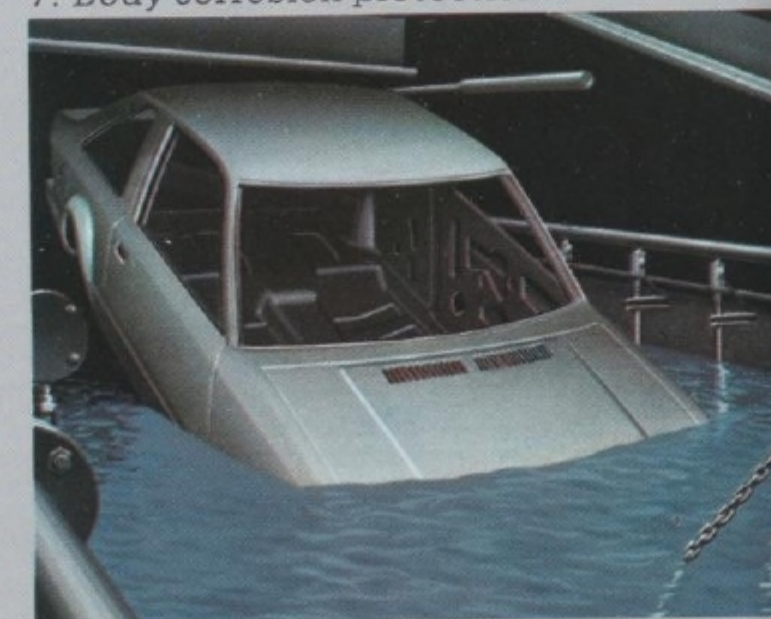


5. Mini-fuse panel.



6. Aerodynamics.

7. Body corrosion protection.



1. Chrome-plated high-strength light alloy bumpers.
2. Halogen sealed-beam headlights for bright, white light.
3. Valance panel and air dam to improve aerodynamics.
4. Axle ratio: 3.59 (MTX); 3.31 (ATX).
5. Easily accessible spark plugs.
6. All-new 4-cylinder overhead cam engine.
7. Flow-Thru ventilation with three blower speeds.
8. Inside hood release.
9. Soft instrument panel.
10. High-strength steel doorguard beams.
11. Sound insulation throughout.

12. Manual front disc brakes, rear drum. Split-diagonal braking system.
13. Front stabilizer bar.
14. Front-wheel drive. Improves traction, increases interior space.
15. Hydraulic, telescoping shock absorbers help provide a smooth ride on bumpy roads.
16. Rack-and-pinion steering for precise steering and feel-of-the-road handling.
17. Energy-absorbing steering column.
18. Solid-state ignition.
19. Fluidic windshield washer system designed for efficient cleaning action.

20. Stalk-mounted control levers for turn signals, horn, headlamp dimmer, and windshield wiper/washer.
21. Inertia seatback release (3-door) allows access to rear seat without use of a lever.
22. Helical coil springs contribute to smooth ride.
23. P155/80R13 steel-belted radial tires for traction in mud and snow.
24. Full-width-construction rear seat folds down for more cargo space.
25. Unitized body construction.
26. Full-width wraparound taillights (3-door).





MERCURY LYNX LS 3-door in Tu-Tone Silver with full styled steel wheels.

## LYNX WORLD OF COMFORT

Enter the world of Lynx. Lynx seats four adults in comfort. The top-of-the line Lynx LS comes with the elegant interior shown left. Featured are comfortable reclining bucket seats trimmed in plush luxury velour cloth, deep 18-ounce cut-pile carpeting, four-spoke soft-feel steering wheel, console with graphic warning display, and rich woodtone accents on the instrument panel and console. Other Lynx LS niceties are AM/FM stereo radio and electric rear window defroster. To make your driving even more comfortable, consider optional air conditioning, speed control, power brakes and power steering.

A world of comfort awaits you in Lynx.

Optional speed control.



Visor vanity mirror.



Optional digital clock (standard on LYNX LS and LYNX GS).



Optional AM/FM stereo radio (standard on LYNX LS).

Shown left, LYNX LS interior with reclining bucket seats in Red velour luxury cloth.





MERCURY LYNX GS Wagon in Tan with full styled steel wheels and optional removable flip-up moonroof.

## LYNX WORLD OF SPACE

Discover Lynx space: in the roomy interior that seats four with new, comfortably contoured bucket seats up front, full width rear seat in back. And in the handy 16.3 cubic feet of hidden cargo space behind the back seat, which expands to 30.6 cubic feet with the back seat folded down. For the maximum amount of Lynx space, get the Lynx Station Wagon (shown here). The rear seat folds down to give you a generous 61 cubic feet of carpeted storage area. The Villager Woodtone option, available on Lynx GL and Lynx GS Wagons, enriches the appearance of your Lynx with full-length woodtone trim along the bodyside and liftgate, accented with bright edges (shown on page 3). Also included with this option is a roof-mounted luggage rack for more carrying capacity.

A world of space surrounds you in Lynx.

LYNX GS reclining low-back bucket seats in Caramel vinyl.



Cargo area cover to keep your luggage out of view.



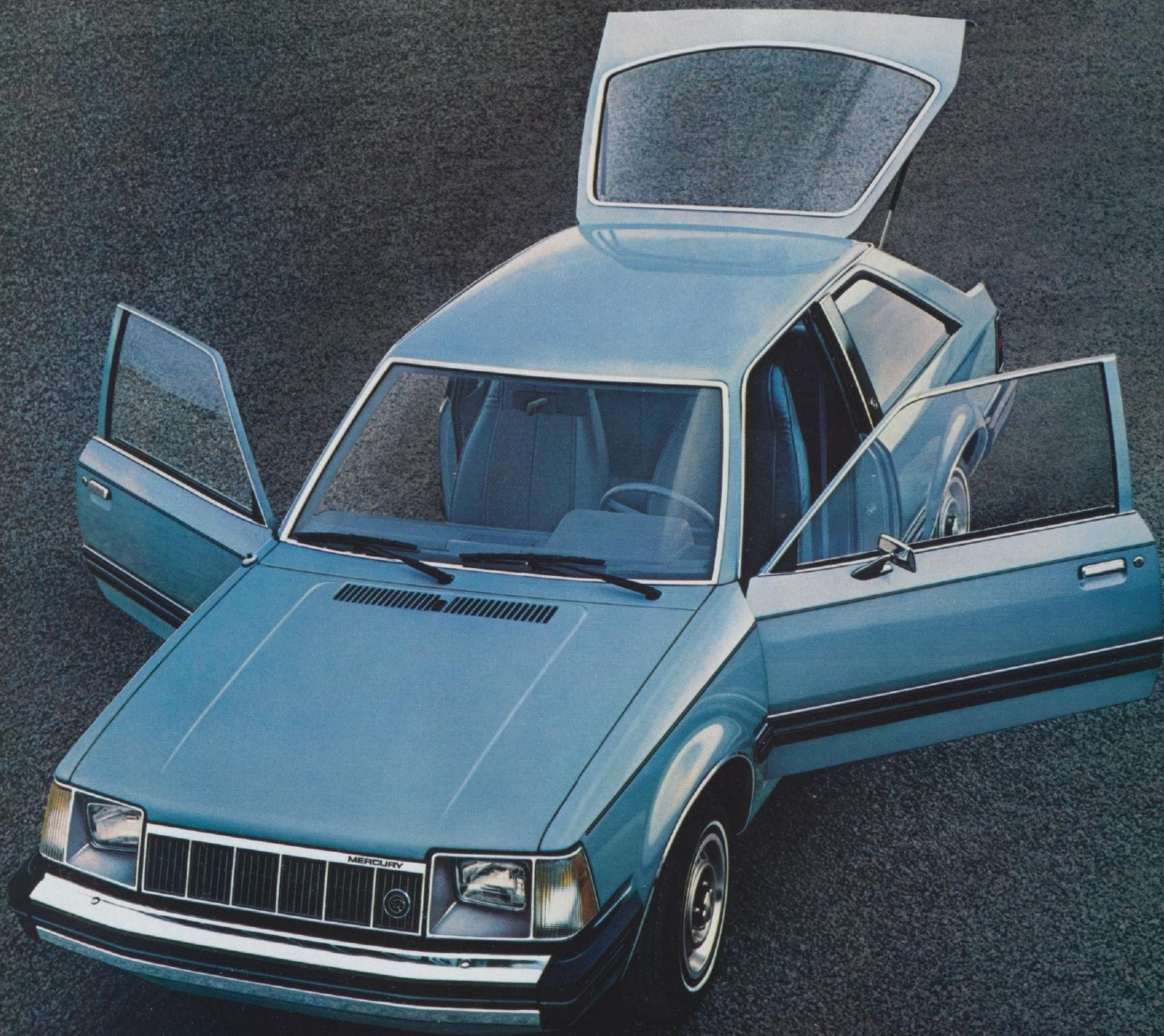
Optional rear window wiper/washer.



Standard steel-belted radial tires (WSW optional).

Shown left, MERCURY LYNX GS Wagon in Tan.





MERCURY LYNX 3-door in Dark Blue Metallic with semi-styled steel wheels.

## LYNX WORLD OF VERSATILITY

Enjoy Lynx versatility: in the third door which lifts up to allow easy access to the storage compartment. In the fold-down rear seat for more cargo carrying capacity. And in the wide range of available trim levels and options. You can make your Lynx even more versatile with the optional roof-mounted cargo carrier (lower right) which is available with an optional cover to protect your gear on long trips. High-back reclining bucket seats, shown here in optional Blue cloth, are standard on Lynx GL (left). Other Lynx GL standard features are deluxe seat belts, consolette with molded-in cup holder and coin slots, and four-spoke steering wheel.

A world of versatility is ready for you in Lynx.

LYNX GL high-back reclining bucket seats in optional Blue cloth.



Lynx generous cargo space.

Optional roof-mounted cargo carrier.

Lynx full-width-construction rear seats.

Shown left, MERCURY LYNX GL 3-door in Bright Blue Metallic.





MERCURY LYNX RS 3-door in Bright Red with full styled steel wheels.

## LYNX WORLD OF PERFORMANCE

Experience Lynx performance: with a four-speed manual transaxle and feisty 1.6 liter 2-bbl. four-cylinder CVH engine. With flat-cornering, four-wheel fully independent suspension system finely tuned to steel-belted radial tires. With an action-oriented handling package including upsized front stabilizer bar, heavy-duty shock absorbers, and stiffer front and rear springs. With a racy black four-spoke steering wheel and sophisticated instrument panel. All this and more is standard excitement on the Lynx RS. Blackout grille and moldings, special "RS" tape stripe/decal, black racing mirrors, and styled steel wheels mark the tough-looking, sporty Lynx RS.

A world of performance is rarin' to go in Lynx.

Optional reclining low-back bucket seats in Black vinyl.



Shown left, LYNX RS instrument panel with tachometer, trip odometer, and temperature gauge.

Graphic warning display in console (optional on Lynx, Lynx GL).

Black remote-control racing mirrors (standard on Lynx RS).

Tachometer (standard on Lynx RS, Lynx LS, Lynx GS).



# OPTIONS

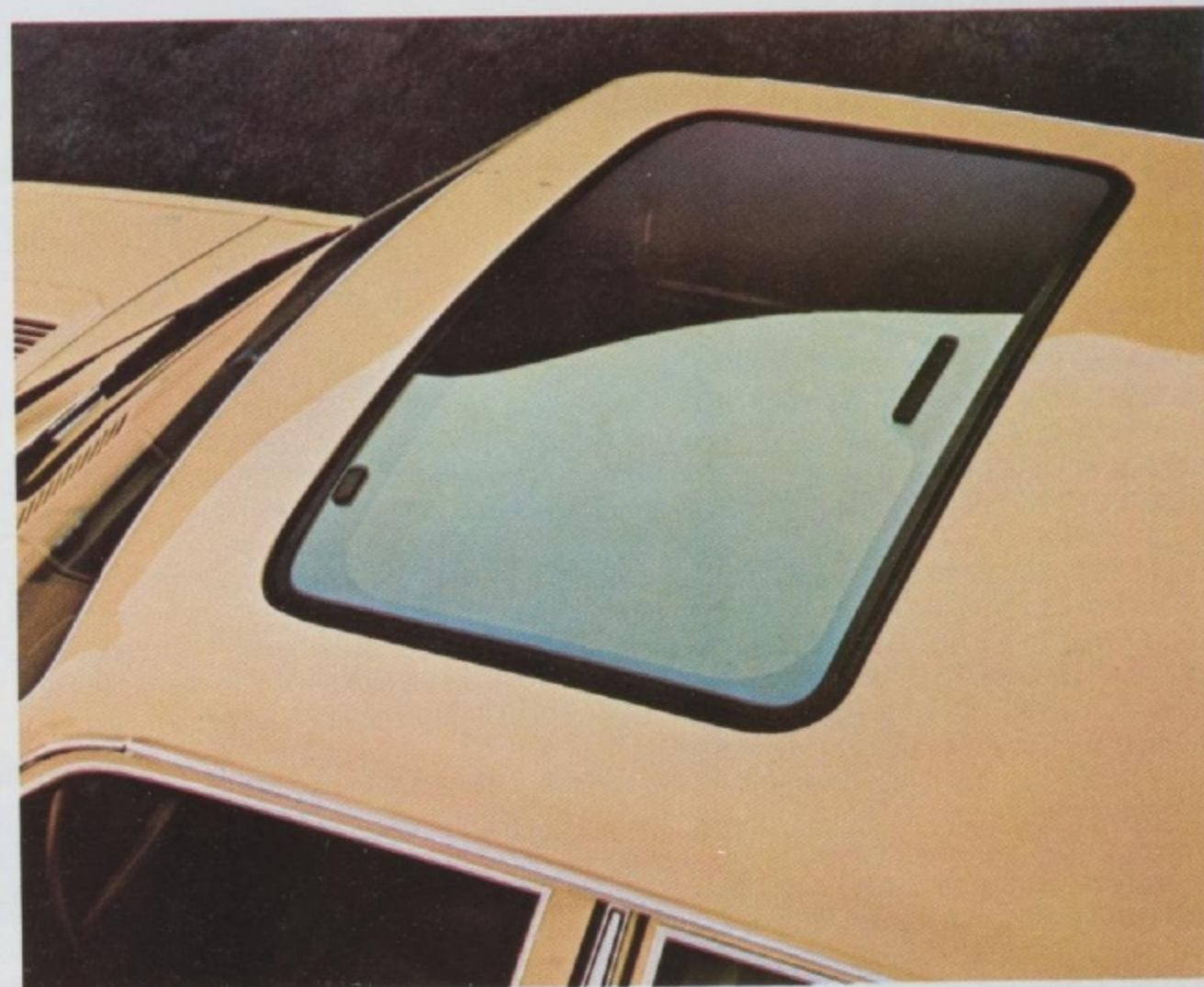
**ELECTRIC REAR WINDOW DEFROSTER.** Helps keep your rear window free of ice and snow.



**AM/FM STEREO RADIO WITH CASSETTE TAPE.** Lynx offers four radio choices (see page 18). Add optional Premium Sound System to either of the stereo radios for greatly improved sound quality. This System includes dual rear premium speakers and power amplifier.



**WHEELS.** Cast aluminum spoke wheels (optional all models); and styled steel wheels with bright trim rings, Argent hub covers, and bright wheel nuts (standard on Lynx GS, Lynx LS, and Lynx RS).



**FLIP-UP, REMOVABLE MOONROOF.** Let the sunshine, fresh air, and the moonlight in with this easy-to-handle, easy-to-like option.

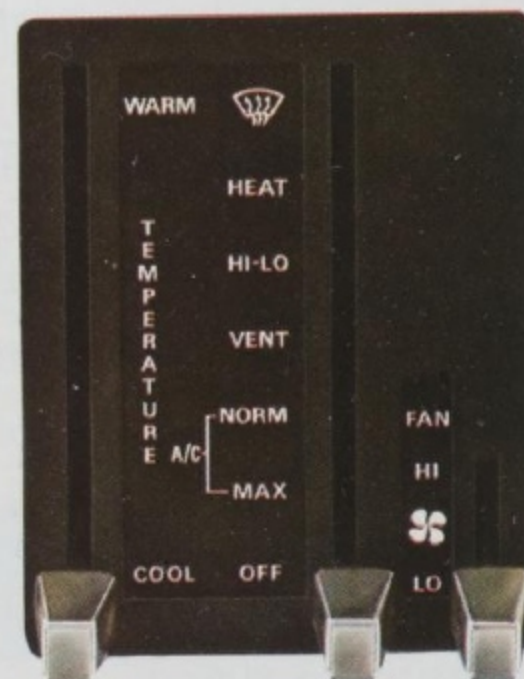


**MANUAL PIVOTING FRONT VENT WINDOWS.** This comfort feature allows you to control the direction and velocity of the air flow.

**MANUAL AIR CONDITIONING** (shown right). Adds comfort to your warm weather driving.

## POWER

- POWER BRAKES
- POWER STEERING



### ☐ LYNX 3-DOOR



### ☐ LYNX STATION WAGON



#### Standard features on all Lynxes:

##### STANDARD EXTERIOR FEATURES

- Sealed-beam halogen headlamps
- Semi-styled wheels
- Bodyside paint stripe
- Bright left-hand outside mirror
- Bright grille
- Bright moldings and wheel trim rings
- Matte black rocker panel paint
- Front and rear long bumper end caps
- Wraparound taillights

##### STANDARD INTERIOR FEATURES

- AM radio (may be deleted for credit)
- Vinyl high-back bucket seats
- Folding rear seat
- 4-passenger seating capacity
- 2-spoke steering wheel
- Stalk mounted controls
- Bronze cluster and radio trim appliques
- Day/night rearview mirror
- Color-keyed swivel sun visors
- Full door and quarter trim panels
- 10-oz. passenger compartment carpeting
- Cargo compartment mat (3-door)
- Black load floor carpeting (wagon)
- Cargo area cover
- Front door dome light switches
- "Liftgate open" warning light (wagon)
- Coat hooks

##### STANDARD FUNCTIONAL FEATURES

- Front-wheel drive
- 1.6L 2-bbl. 4-cylinder CVH engine
- Solid-state ignition
- 4-speed manual overdrive transaxle with floor shift
- Manual front disc/rear drum brakes
- Manual rack-and-pinion steering
- MacPherson-strut front suspension
- Independent rear suspension
- P155/80R13 steel-belted radial tires
- Maintenance-free 36-amp-hr. battery
- Inside hood release
- Electric windshield washer/wiper
- Inertia seatback release
- Flash-to-pass headlamp feature



### ☐ LYNX GL 3-DOOR

## ☒ MAKE YOUR OWN CHOICES

### ☐ LYNX GL STATION WAGON



Includes all Lynx standard features *plus* these additions and/or differences:

- Reclining vinyl high-back bucket seats
- Deluxe seat belts
- Deluxe seat and door trim
- Console (includes molded-in cup holders and coin slots)
- Soft 4-spoke color-keyed steering wheel
- Visor vanity mirror
- Black load floor carpeting (3-door)
- Color-keyed load floor carpeting (wagon)
- Rear ashtrays
- Wide bodyside molding w/Argent stripe
- Bumper rub strips with Argent stripe
- Deluxe sound insulation package
- Black front air dam
- GL medallion



### ☐ LYNX GS 3-DOOR



### ☐ LYNX GS STATION WAGON

Includes all Lynx GL standard features *plus* these additions and/or differences:

- Reclining cloth low-back bucket seats
- Digital clock
- Instrumentation group (special instrument cluster with large round dials for speedometer and tachometer, small dials for temperature and fuel gauges, and a trip odometer)
- Intermittent windshield wipers
- Console with graphic warning display
- Woodtone cluster and radio trim covers
- 18-ounce passenger compartment carpeting
- Ashtray, glove box, dome/map lights
- Cargo compartment/engine compartment lights
- Glove box lock
- Headlamp-on warning buzzer
- Roof assist handles
- Dual remote-control color-keyed mirrors
- Full styled steel wheels
- P165/80R13 steel-belted radial tires
- Bumper guards, front and rear
- Dual color bodyside stripe
- GS medallion

### ☐ LYNX LS 3-DOOR



Includes all Lynx GS standard features *plus* these additions and/or differences:

- AM/FM stereo radio
- Electric rear window defroster
- Reclining low-back bucket seats in luxury velour cloth
- Velour cloth appliqué on door, 18-ounce carpeting on lower door
- Tu-Tone paint (may be deleted for credit)
- Burled walnut woodtone texture on cluster, radio, and console appliques
- LS medallion



### ☐ LYNX RS 3-DOOR



### ☐ LYNX RS STATION WAGON

Includes all Lynx standard features *plus* these additions and/or differences:

- Handling Package (includes upsized front stabilizer bar, heavy-duty shock absorbers, stiffer front and rear springs)
- Reclining high-back bucket seats with deluxe vinyl seat trim
- Deluxe color-keyed seat belts
- Deluxe door trim panels w/bright accents
- Black 4-spoke soft steering wheel
- Instrumentation Group
- Console with graphic warning display
- Black load floor carpeting (3-door)
- Color-keyed load floor carpeting (wagon)
- Rear ashtrays
- Roof assist handles
- Black dual remote-control racing mirrors
- Full styled steel wheels
- Bright trim rings
- Bumper rub strip with Argent stripe
- Blackout grille treatment
- Black headlamp frames, windshield molding
- Black lower back panel surround molding (3-door)
- Blackout treatment: rear window, drip, and wheel-lip moldings; window frame moldings, license plate area, door handles, and lock cylinders
- Black front and rear bumpers
- Deluxe sound insulation package
- Special "RS" tape stripe/decals treatment
- "RS" medallion



MORE CHOICES

	Lynx	Lynx GL	Lynx GS	Lynx LS	Lynx RS
<input type="checkbox"/> Air Conditioning, Manual*	OPT	OPT	OPT	OPT	OPT
<input type="checkbox"/> Battery, Heavy-Duty 48-Amp-Hr Main.-Free	OPT	OPT	OPT	STD	STD
<input type="checkbox"/> Bumper Guards—Front —Rear	OPT	OPT	STD	STD	OPT
<input type="checkbox"/> Cargo Carrier, Roof-Mounted, Covered (Dealer-installed)	OPT	OPT	OPT	OPT	OPT
<input type="checkbox"/> Clock, Digital	OPT	OPT	STD	STD	OPT
<input type="checkbox"/> Console with Graphic Warning Display	OPT	OPT	STD	STD	STD
<input type="checkbox"/> Defroster, Electric Rear Window	OPT	OPT	OPT	STD	OPT
<input type="checkbox"/> Extended Service Plan (See Page 20)	OPT	OPT	OPT	OPT	OPT
<input type="checkbox"/> Fuel Tank, Extended Range (11.3 Gal. Cap.)**	OPT	OPT	OPT	OPT	OPT
<input type="checkbox"/> Heater, Engine Block	OPT	OPT	OPT	OPT	OPT
<input type="checkbox"/> Luggage Rack, Roof-Mounted (Std. on Villager)	OPT	OPT	OPT	OPT	OPT
<input type="checkbox"/> Mirrors, Dual Remote-Control	OPT	OPT	STD	STD	STD
<input type="checkbox"/> Molding, Vinyl Bodyside	OPT	STD	STD	STD	OPT
<input type="checkbox"/> Moonroof, Flip-Up Removable	OPT	OPT	OPT	OPT	OPT
<input type="checkbox"/> Paint, Glamour	OPT	OPT	OPT	NA	NA
<input type="checkbox"/> Paint, Tu-Tone	OPT	OPT	OPT	STD	NA
POWER					
<input type="checkbox"/> Power Brakes*	OPT	OPT	OPT	OPT	OPT
<input type="checkbox"/> Power Steering	OPT	OPT	OPT	OPT	OPT
<input type="checkbox"/> Protection, Lower Bodyside Vinyl Coating	OPT	OPT	OPT	OPT	OPT
RADIOS					
<input type="checkbox"/> AM (May Be Deleted for Credit)	STD	STD	STD	NA	STD
<input type="checkbox"/> AM/FM Monaural	OPT	OPT	OPT	NA	OPT
<input type="checkbox"/> AM/FM Stereo	OPT	OPT	OPT	STD	OPT
<input type="checkbox"/> AM/FM Stereo with Cassette	OPT	OPT	OPT	OPT	OPT
<input type="checkbox"/> Dual Rear Speakers (with AM or AM/FM Monaural Radios)	OPT	OPT	OPT	STD	OPT
<input type="checkbox"/> Premium Sound System (See Page 16)	OPT	OPT	OPT	OPT	OPT
<input type="checkbox"/> Roof Air Deflector (Wagon Only)	OPT	OPT	OPT	NA	OPT
<input type="checkbox"/> Seat Belts, Deluxe	OPT	STD	STD	STD	STD
<input type="checkbox"/> Speed Control	OPT	OPT	OPT	OPT	OPT
<input type="checkbox"/> Tinted Glass, All Windows	OPT	OPT	OPT	OPT	OPT
<input type="checkbox"/> Windows, Manual Pivoting Front Vent	OPT	OPT	OPT	OPT	OPT
<input type="checkbox"/> Windshield Wipers, Interval	OPT	OPT	STD	STD	OPT
<input type="checkbox"/> Wiper/Washer, Rear Window	OPT	OPT	OPT	OPT	OPT

STD—Standard OPT—Optional NA—Not Available

ENGINES/TRANSMISSIONS

	Lynx	Lynx GL	Lynx GS	Lynx LS	Lynx RS
<input type="checkbox"/> 1.6L 2-bbl. 4-Cyl. Engine with 4-Speed Manual Transaxle*	STD	STD	STD	STD	STD
<input type="checkbox"/> 1.6L 2-bbl. 4-Cyl. Engine with Split-Torque Automatic Transaxle*	OPT	OPT	OPT	OPT	OPT

RADIAL TIRES AND WHEELS

	Lynx	Lynx GL	Lynx GS	Lynx LS	Lynx RS
<input type="checkbox"/> P155/80R13 BSW	STD	STD	NA	NA	NA
<input type="checkbox"/> P155/80R13 WSW	OPT	OPT	NA	NA	NA
<input type="checkbox"/> P165/80R13 BSW	OPT	OPT	STD	STD	STD
<input type="checkbox"/> P165/80R13 WSW	OPT	OPT	OPT	OPT	OPT
<input type="checkbox"/> Semi-Styled Steel Wheels (Shown p. 13)	STD	STD	NA	NA	NA
<input type="checkbox"/> Full Styled Steel Wheels (Shown pp. 5, 11, 15)	NA	NA	STD	STD	STD
<input type="checkbox"/> Cast Aluminum Spoke Wheels (Shown pp. 3, 16)	OPT	OPT	OPT	OPT	OPT
BSW—Black Sidewall. WSW—White Sidewall.					

OPTIONAL PACKAGES

	Lynx	Lynx GL	Lynx GS	Lynx LS	Lynx RS
<input type="checkbox"/> APPEARANCE PROTECTION GROUP Includes door-edge guards, carpet floor mats, glove box lock (standard on Lynx GS and Lynx LS), and license plate frame(s).	OPT	OPT	OPT	OPT	OPT
<input type="checkbox"/> HANDLING PACKAGE Includes upsized front stabilizer bar, heavy-duty shock absorbers, and stiffer front and rear springs (requires aluminum spoke wheels on Lynx or Lynx GL).	OPT	OPT	OPT	OPT	STD
<input type="checkbox"/> LIGHT GROUP Includes glove box light, dome/map light, cargo compartment light, engine compartment light, ashtray light, "headlamp-on" warning buzzer, rear door and liftgate/ hatchback courtesy light switch.	OPT	OPT	STD	STD	OPT
<input type="checkbox"/> VILLAGER WOODTONE OPTION Includes woodtone trim, brown bodyside molding with black insert, woodtone rails with bright edges, and roof-mounted luggage rack. Available on Station Wagon only.	NA	OPT	OPT	NA	NA

\*This equipment is subject to additional ordering requirements or limitations. Please consult your Dealer for details.  
\*\*Late availability.

INTERIOR SEATING CHOICES



☐ High-back bucket seats. Standard on LYNX in vinyl. Cloth optional. Colors: Caramel (vinyl only); Black, Medium Red, Medium Wedgewood Blue. Reclining feature optional.



☐ Reclining high-back bucket seats. Standard on LYNX GL and LYNX RS in vinyl. Cloth optional. Colors: Caramel (vinyl only); Black, Medium Red, Medium Wedgewood Blue.



☐ Reclining low-back bucket seats. Optional on LYNX GL and LYNX RS in cloth or vinyl. Colors: Caramel (vinyl only); Black, Medium Red, Medium Wedgewood Blue.

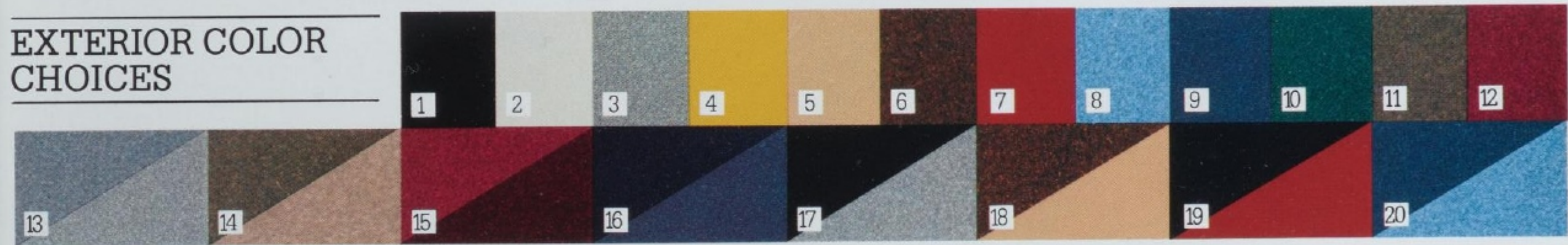


☐ Reclining low-back bucket seats. Standard on LYNX GS in cloth. Vinyl optional at no extra charge. Colors: Caramel (vinyl only); Black, Medium Red, Medium Wedgewood Blue.



☐ Reclining low-back bucket seats in luxury velour cloth. Standard on LYNX LS. Colors: Black, Medium Red, Medium Wedgewood Blue.

EXTERIOR COLOR CHOICES



STANDARD COLORS for Lynx, Lynx GL, Lynx GS, Lynx RS

- ☐ 1. Black
- ☐ 2. White
- ☐ 3. Silver Metallic
- ☐ 4. Bright Yellow
- ☐ 5. Tan
- ☐ 6. Dark Brown Metallic
- ☐ 7. Bright Red

OPTIONAL GLAMOUR COLORS

- ☐ 8. Bright Blue Metallic
- ☐ 9. Dark Blue Metallic
- ☐ 10. Medium Dark Spruce Metallic

STANDARD TU-TONES—Lynx LS only

- ☐ 13. Medium Grey Metallic\*/Silver Metallic
- ☐ 14. Medium Fawn Metallic/Light Fawn Metallic\*
- ☐ 15. Medium Red Metallic/Maroon Metallic
- ☐ 16. Midnight Blue Metallic\*/Dark Blue Metallic

OPTIONAL TU-TONES—Lynx GL and Lynx GS only

- ☐ 17. Black/Silver Metallic
- ☐ 18. Dark Brown Metallic/Tan
- ☐ 19. Black/Bright Red
- ☐ 20. Dark Blue Metallic/Bright Blue Metallic

\*Available as single color on Lynx LS only.  
NOTE: Due to occasional printing irregularities, the colors shown may vary from actual hues. Please see your Lincoln-Mercury Dealer for accurate color chips.



## LYNX SPECIFICATIONS

	Lynx 3-Door	Lynx Wagon
Wheelbase	94.2"	94.2"
Turning Diameter	35.1'	35.1'
Overall Length	163.9"	165.0"
Overall Height	53.3"	53.3"
Overall Width	65.9"	65.9"
Wheel Tread—Front	54.7"	54.7"
—Rear	56.0"	56.0"
Headroom—Front	38.0"	38.0"
—Rear	37.4"	38.2"
Legroom—Front	41.5"	41.5"
—Rear	35.6"	35.6"
Shoulder Room—Front	51.5"	51.5"
—Rear	51.5"	51.5"
Hiproom—Front	52.0"	52.0"
—Rear	44.4"	44.4"
Luggage Capacity/ Cargo Volume (Cu. Ft.)*	30.6	61.0
Fuel Capacity (Gals.)	10.0	10.0
Curb Weight, 49 States (Lbs.)	2066	2183

\* With rear seat folded down



Ford Motor Company's optional Extended Service Plan covers certain selected components on new Lincoln-Mercury cars for longer than the vehicle's basic warranty. The cost is so moderate for the protection you get that it could pay for itself the first time you need it. Your Lincoln-Mercury Dealer will be happy to give you complete details of the Plan, which is available on cars sold and normally operated in the 50 United States.

Buy or lease your Lynx from your Lincoln-Mercury Dealer.

## CORROSION PERFORATION WARRANTY

Ford Motor Company offers a limited three-year corrosion perforation warranty excluding exhaust system components on all new 1981 Lincoln-Mercury automobiles. And it's free.

The warranty states that any part which, in normal use, develops perforation from corrosion within three years of retail delivery or first use will be repaired or replaced free of charge by the selling Dealer after inspection by a Ford representative. Exhaust system components or parts which develop corrosion perforation caused by accidents or other damage are not covered.

This warranty valid only in the 50 United States.



### ...FOR SURE

Your new Mercury Lynx comes equipped with factory-engineered and approved parts including a dependable Motorcraft battery, shock absorbers, spark plugs, long life oil filters, and motor oil. For continued top performance, be sure to specify genuine Motorcraft parts whenever replacement is necessary.

Specifications and descriptions used were in effect when this publication was approved for printing. Lincoln-Mercury Division reserves the right to discontinue models or options at any time, or change specifications, equipment or designs without notice and without incurring obligation. Standard and optional equipment listed are subject to change. Some features described are optional at extra cost. Some options are required in combination with other options. Availability of some models and features may be subject to a slight delay.

## GAS MILEAGE

At the time this catalog was published, 1981 EPA estimates were not available. Lynx should, however, post good miles-per-gallon ratings. For the latest information, consult your Lincoln-Mercury Dealer or the 1981 EPA Gas Mileage Guide.

Form No. P-105

Litho in U.S.A. 8-80 (370M)

## QUALITY REPLACEMENT PARTS FROM FORD

## MERCURY LYNX

LINCOLN-MERCURY DIVISION

