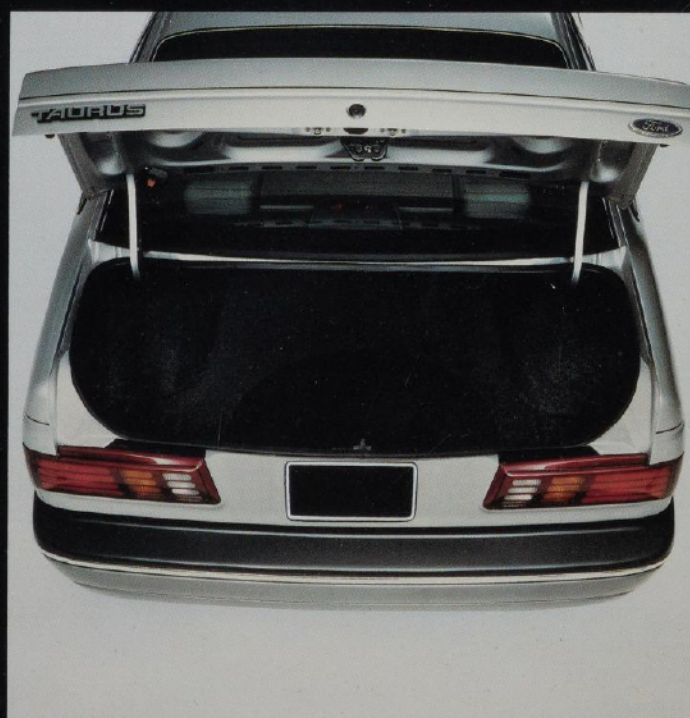
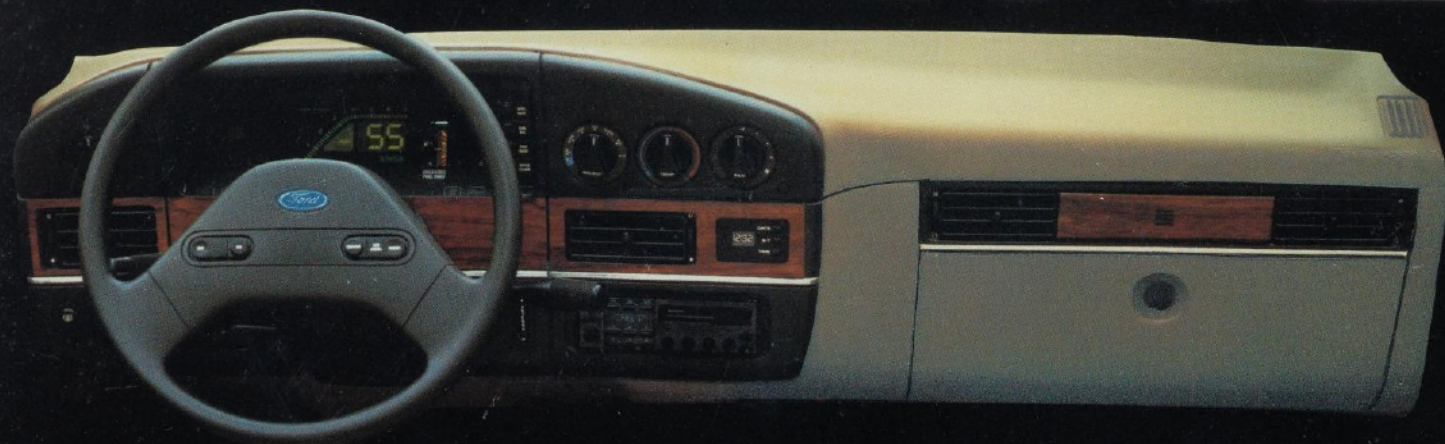


TAURUS

1986



TAURUS



1.



2.



3.



4.



5.



6.



7.

Roomy and Versatile

The 1986 Taurus was designed from the inside out. Even the cargo area of the wagon reflects careful planning for optimum versatility. From its ability to hold 4 x 8 sheets horizontally to the many functional configurations shown here:

1. With rear seats folded down Taurus Wagon offers 81.9 cubic feet of cargo area
2. The 60/40 split bench rear seat allows for cargo and extra passengers
3. With rear seats up Taurus provides six passenger comfort with 45.7 cubic feet of storage
4. The lockable underfloor storage area is standard on wagons
5. Taurus Wagon has room for up to eight passengers with the optional third passenger fold-up seat
6. The optional load floor extension/picnic table folds out of the way when not in use
7. The standard roll-up type cargo area cover affords extra security

Due to the advanced timing of the material herein, it is subject to change prior to model introduction. Ford Division reserves the right to change specifications and features without notice and without incurring obligation. Availability of models and equipment described in this book depends upon final EPA (Environmental Protection Agency) certification.



TAURUS SEDAN WITH OPTIONAL EXTERIOR DECOR GROUP

Step Into The Future

The 1986 Taurus is an all-new mid-size car that combines styling, room and performance. It's sleek, aerodynamic design tells you at first glance that here is a vehicle with quality, one to be driven with pride. Surprisingly roomy for such a sporty looking car, Taurus seats up to six passengers (eight in wagon with optional third seat).

Once behind the wheel, you will be impressed by how well-balanced the performance of Taurus is. Precise, linear steering. Flat, controlled handling. A smooth, comfortable ride. A "next generation" front wheel drive design developed just for Taurus redefines the state-of-the-art.

The Taurus station wagon is aerodynamically designed, with more carrying capacity than any other wagon in its class (cargo volume index almost 82 cubic feet). The 60/40 divided second seat folds flat to create a fully-carpeted load floor to maximize usable cargo capacity; 4 x 8 panels can be carried horizontally. With its large two-way liftgate (standard), plus a number of practical and innovative options, the Taurus wagon has the versatility to meet the demanding requirements of many wagon buyers.

The wagon and sedan models are available in three series. Standard

models incorporate high levels of equipment and a long list of thoughtful features. Taurus can be upgraded by addition of an Exterior Decor Group and/or Interior Convenience Group. The latter is included in the sporty MT5 series, along with a 5-speed manual transaxle. At the top of the line is Taurus LX with its distinctive exterior appearance, luxurious interior appointments and a number of unique functional features.

Each Taurus powertrain blends performance with economy. The 2.5L I4 engine has central electronic fuel injection. It is teamed either with a smooth 3-speed automatic transaxle featuring a centrifugally locking clutch or an economical 5-speed manual. The all-new, 60 degree 3.0L V6 engine, designed expressly for Taurus, has multi-port Electronic Fuel Injection and is matched with an equally new 4-speed automatic overdrive transaxle. Both engines are managed by Ford's exclusive EEC-IV (Electronic Engine Control) computer.

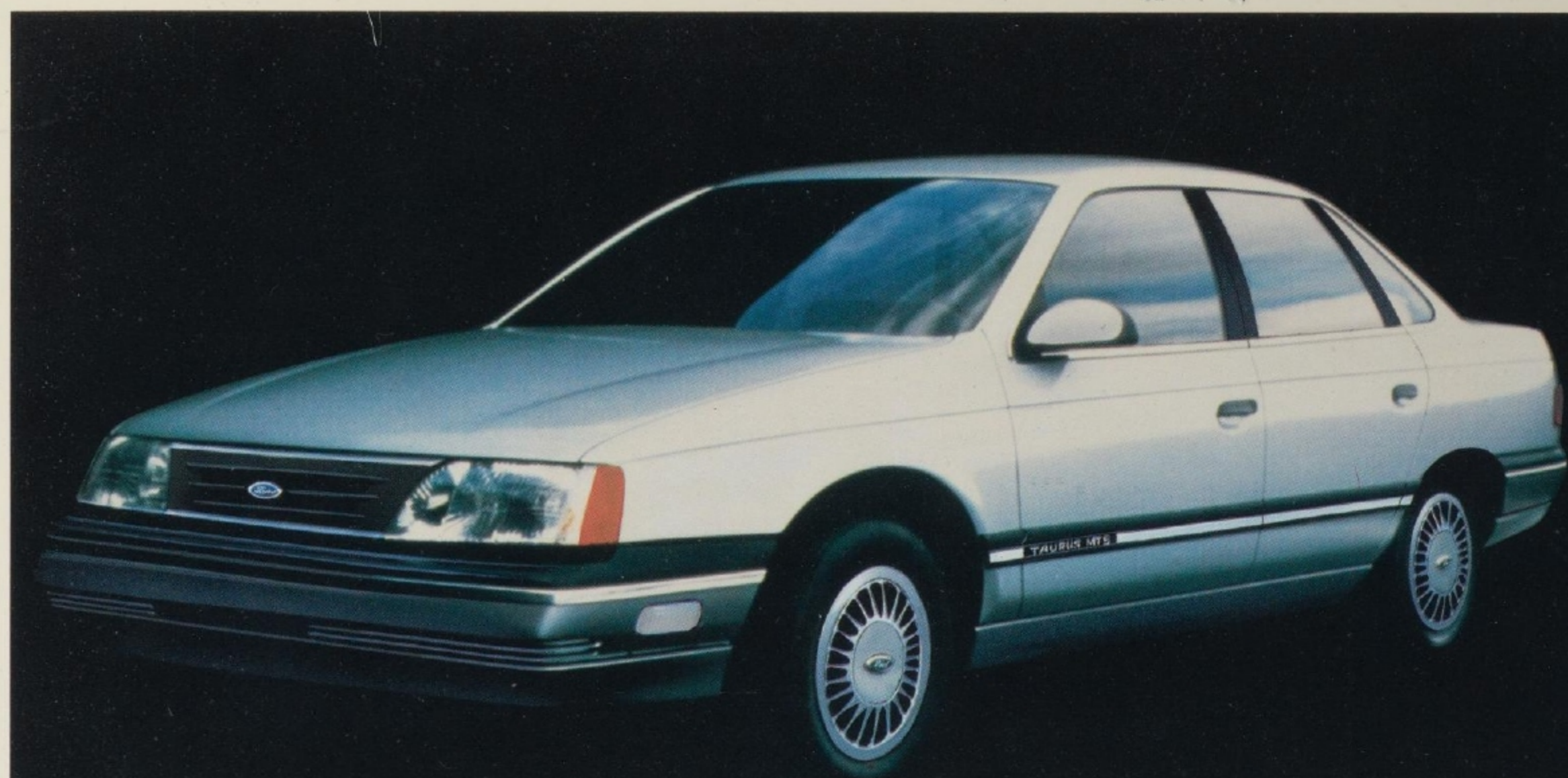
Taurus reflects an extension of Ford's commitment to quality. Rocker panels and lower doors are coated with urethane for road abrasion protection. Gas-filled shocks and struts have been designed to last 100,000 miles. Permanent set front-end requires no caster or camber realignment.

The thought that went into planning Taurus is exemplified by its bumpers. Molded of tough polycarbonate, they are shaped to help manage the flow of air around and under the car. Not only do they provide 5 MPH impact protection, twice the government standard, but the bumpers themselves are resilient, smooth with no sharp edges, and scuff-resistant.

In order to suit a variety of preferences and needs, Taurus seats will be offered in three configurations: flight bench, split bench and bucket. (Availability varies by model and series.) All three designs were orthopedically developed to provide comfort and support, especially for travelers who spend a lot of time on the road.

Extensive analysis of human factors went into the shaping and placement of controls and the positioning of instruments, even the underhood layout. To minimize diverting the driver's attention from the road, control switches can be identified by touch, with many illuminated for ease of locating at night. Many other examples of thoughtfulness and attention to detail can be found in the list of standard features.

TAURUS... proudly designed to become the new benchmark of value for the world.



TAURUS MT5 SEDAN

Standard Equipment

Functional

- 2.5L (central injection) HSC I4 engine
- Three-speed CLC (centrifugally locking clutch) automatic transaxle, with column shift
- EEC-IV electronic engine controls
- Power rack and pinion steering with 15.25:1 ratio
- Power front disc/rear drum brakes
- Front wheel drive
- Four-wheel independent suspension
- MacPherson front and rear suspensions
- Nitrogen gas-pressurized 100,000 mile struts and shocks
- Front stabilizer bar
- Double isolated tension strut/shear type bushing for road isolation
- Extra wheel travel, front and rear, for best ride at both loaded and unloaded conditions
- Permanent set front alignment (caster and camber)
- P195/70R-14 BSW all-season tires (4), with mini-spare
- Flush glass, all-around, for decreased windnoise improved aero
- Urethane coating on lower doors and rocker panels for road abrasion protection
- High-mount stop lamp on package tray
- Gas cylinder hood assist
- Maintenance-free battery
- 50,000 mile spark plugs
- Coolant recovery system; translucent radiator coolant bottle with high and low level fill markers
- Recessed windshield wipers, 20" blades
- 80 oz. translucent windshield washer fluid reservoir
- Dual fluidic washer jets
- 16 gallon fuel tank with gas cap tether
- Single key for door and ignition; unique key for decklid and glove compartment
- Spring-loaded door locks so key returns to vertical position for easy removal
- Automatic key release incorporated in shift mechanism (column-shift only)

- Remote control LH mirror (black)
- Day/night rear view mirror
- Multi-function stalk control including turn signals, wipe-wash, high beam and flash-to-pass
- Foot-operated parking brake
- Side window demisters
- Low brake fluid level warning light
- Dual latch front seat track to prevent "chucking"
- Conveniently located swing-down fuse box with extra fuses
- Dual note horn with steering wheel center hub actuation
- AM mechanical radio with dual front speakers

Interior

- Flight bench seat in cloth and vinyl with fold down center armrest and 1/2 degree driver recliner; bucket seats with driver recliner available as no charge option
- 7" seat track with full-width vertical release
- Carpeted package tray
- Cloth-covered head restraints, dual post with 2-way adjustment
- Cloth-covered headlining with molded visor pockets
- Cloth-covered sun visors with dual center clips, center coverage, 6" vanity mirror on RH visor, document strap on LH visor
- Driver-oriented instrument panel with swept-back design and woodtone applique
- Backlit instrument cluster with temperature gauge
- Illumination of all major controls
- Positive shut-off climate control registers
- Rotary headlamp and climate control knobs, thumb-wheel design interior lamp dimmer
- Large, illuminated locking glove box
- Large, illuminated front ashtray with integral cigarette lighter
- Two rear seat ashtrays

- Soft-feel, color-keyed seat belts with top release buckles designed for ease of one-hand use, comfort regulators for tension relief
- Front outboard restraints are continuous loop design with buckles anchored to seat tracks
- Door trim panels feature cloth inserts, padded armrests, reflectors, formed map pockets with flocking (front doors only), front door curb lights
- Molded vinyl door grip handles, color-coordinated
- Courtesy light switches on all four doors
- Child-proof rear door locks
- 10 oz. color-keyed carpet with integral sound absorber
- Large accelerator pedal
- Foot rests for driver's left foot, passenger's right
- Floor angled for rear passenger foot comfort
- Full outboard seat track shields, color-coordinated; front and rear inboard pedestal covers (black)
- Carpeted, deep-well luggage compartment with mini-spare tire stowage under flat floor
- Do-it-yourself underhood items highlighted in yellow for ease of locating

Exterior

- Polycarbonate bumpers with black upper shelf and bright inserts
- Wide, black bodyside moldings with molded end caps, bright mylar inserts and integral TAURUS nomenclature
- Full wheel covers
- Black windshield and backlight moldings
- Single, aerodynamic, halogen headlamps
- Turnlamps integrated into aero headlamp design
- Louvered plastic grille in body color with Ford oval in center
- Wraparound taillamps with integral backup lamps and side markers
- Bodyside groove stamped in fenders, doors and quarter panels



TAURUS LX WAGON

- Shingled, one-piece doors with concealed, flush drip moldings
- Black plastic door handles with "D" shape, black lock bezels

STATION WAGON EQUIPMENT DIFFERENTIAL VS. SEDAN

Functional

- 3.0L EFI (multi-port injection) V6 engine
- Four-speed automatic transaxle with overdrive
- Unique (short and long arm type) rear suspension to maximize usable cargo space
- Two-way liftgate (open glass alone or entire door)
- RH mirror (fixed)

Exterior

- Aerodynamic corrosion-proof luggage rack (charcoal grey) with adjustable rear cross bar, six integral tie-downs
- High-mount stop lamp at top of liftgate
- Vertical taillamps with integral back-up lamps; side markers in quarter panels
- License plate lamp shield designed for functional use as handle
- Unique shape rear bumper with step pad

Interior

- 60/40 split fold-down second seat with buttons located on top outboard sides of seat for ease of access from outside vehicle
- Grab handle on inside of liftgate
- Mini-spare in LH quarter trim panel
- Lockable, carpeted under-floor storage compartment
- Fully carpeted cargo area, including second seatback, load floor and liftgate inner panel

MT5 EQUIPMENT DIFFERENTIAL VS. BASE SERIES

Functional

- Five-speed manual transmission, floor-mounted
- Upshift indicator light
- 2.5L EFI (central injection) HSC I4 engine

- Rear stabilizer bar
- Key release button on steering column

Exterior

- TAURUS MT5 nomenclature in bodyside moldings
- Color-coordinated rocker panel moldings
- Black-out treatment on "B" (all) and "C" (sedan only) pillars

Interior

- Interior Convenience Group with bucket seats and console
- Unique instrument cluster with tachometer and trip odometer
- Unique steering wheel cover

LX EQUIPMENT DIFFERENTIAL VS. BASE SERIES

Functional

- 3.0L EFI (multi-port injection) V6 engine
- Four-speed automatic transaxle with overdrive
- Air conditioning
- Tinted glass
- Electronic search AM-FM stereo with four speakers
- Interval windshield wipers
- Power side windows
- Power lock group
- Dual electric remote control mirrors
- Light group
- Interval windshield wipers
- Electronic digital clock
- P205/70R-14 BSW tires
- Front cornering lamps (in bumper)
- Automatic parking brake release (except with floor shift)
- Power adjustable front seat lumbar supports
- Lighted door/ignition key
- Electronic warning chime
- Luxury sound package
- Rear stabilizer bar

Exterior

- Unique body color grille with "floating" Ford oval and bright lower molding

- Bodyside cladding (color-coordinated) with molded-in TAURUS LX nomenclature, integral black/bright bodyside moldings
- Color-coordinated rocker panel moldings
- Unique tri-color taillamps (sedan only)
- Bright/black windshield (all) and backlight (sedan only) moldings
- Bright/black belt moldings
- Black-out treatment on "B" (all) and "C" (sedan only) pillars
- Bright door and quarter window surround moldings (sedan only)
- Luxury wheel covers

Interior

- Luxury cloth seats with unique sew style
- Choice of split bench seats or bucket seats with console (see Interior Convenience Group for list of console features)
- Four-way adjustable front headrests
- Front seatback map pockets
- Integral rear seat headrests (sedan only)
- Unique, formed package tray with magnetic latching storage bin (sedan only)
- Rear seat fold-down armrest (sedan only)
- Full cloth door trim panels
- 16 oz. floor carpet with rear seat heat ducts
- Dual illuminated visor mirrors with dual secondary visors for front/side coverage; RH mirror is new pull-down design with additional pivot allowing it to be moved closer to passenger's face
- Additional RH woodtone appliques on instrument panel above glove box door
- Trip odometer
- Unique steering wheel cover
- Cargo bins with hinged lids in luggage compartment (sedan)
- Cargo tie-downs (sedan only — standard on base wagon)
- Cargo tie-down net
- Convenience kit with flashlight, bunge cord (sedan only)

Major Options

- 2.5L/CLC Automatic Transaxle
- 2.5L/MTX 5-Speed Manual Transaxle
- 3.0L/AXOD Automatic Overdrive Transaxle
- Air Conditioning, Electronic Climate Control
- Air Conditioning, Manual Temperature Control
- Autolamp System
- Battery, Heavy-Duty
- Bracket, Front License Plate
- Cargo Area Cover
- Clock, Electronic Digital
- Convenience Group, Interior
- Decor Group, Exterior
- Defroster, Rear Window
- Diagnostic Warning Lights
- Floor Mats, Front and Rear
- Floor Shift
- Fuel Door Release, Remote
- Fuel Tank, Extended Range
- Glass, Tinted - Complete
- Graphic Equalizer
- Illuminated Entry System
- InstaClear® Windshield
- Instrument Cluster, Electronic
- Keyless Entry System
- Light Group
- Load Floor Extension ("Picnic Table")
- Lock Group
- Mirrors, Dual Electric Remote-Control
- Mirrors, Illuminated Visor
- Moldings, Rocker Panel
- Moonroof, Power
- Paint Stripes
- Parking Brake Release, Automatic
- Power Radio Antenna
- Power Door Locks
- Power Side Windows
- Premium Sound System
- Radio, Electronic Search (AM/FM Stereo)
- Radio, Electronic Search with Cassette Player
- Radio Credit Option
- Seat, Rear Facing Third

- Seat, 6-Way Power Driver's
- Seats, 6-Way Power Driver's and Passenger's
- Spare Tire, Conventional
- Speed Control
- Steering Column, Tilt
- Steering Wheel, leather-wrapped
- Suspension, Heavy-Duty (load-carrying)
- Tonneau Cover — see Cargo Area Cover
- Vent Windows, Sliding (vertical)
- Washer/Wiper, Rear Window
- Wheel Covers, Luxury
- Wheels, Cast Aluminum
- Wheels, Styled Road
- Windshield Wipers, Interval

LPO OPTIONS

- Engine Block Immersion Heater
- Floor Mats, Front
- Luggage Rack Delete
- Tinted Windshield

Powertrains

ENGINE	TRANSAXLE	AXLE RATIOS		
		49 STATES	CALIFORNIA	HIGH ALTITUDE
2.5L	5-Speed Manual ^(a)	3.33	3.33	3.33
2.5L	Automatic with Centrifugally Locking Clutch ^(b)	3.23	3.23 ^(c)	3.23
3.0L	Automatic Overdrive ^(d)	3.37	3.37	3.37

(a) Standard and only available on MT5 (b) Fleet only on wagon, NA on LX (c) NA on wagon (d) Standard on LX and all wagons, NA on MT5

Dimensions

	SEDAN	WAGON	WAGON	
EXTERIOR				
Wheelbase	106.0"	106.0"		
Overall Length	188.4"	191.9"		
Overall Width	70.4"	70.4"		
Overall Height	54.4"	55.2"		
Tread - Front	61.5"	61.5"		
- Rear	60.5"	59.9"		
INTERIOR - Front				
Head Room	38.3"	38.6"		
Leg Room	41.6"	41.6"		
Shoulder Room	57.5"	57.5"		
Hip Room	55.1"	55.1"		
INTERIOR - Rear				
Head Room	37.6"	38.3"		
Leg Room	37.5"	36.5"		
Shoulder Room	57.5"	57.5"		
Hip Room	56.4"	56.4"		
Knee Room	3.0"	2.3"		
Couple Distance	33.2"	32.3"		
EPA Interior Volume Index	117.1 cu. ft.	145.6 cu. ft.		
EPA Pass. Vol. Index	100.1 cu. ft.	100.1 cu. ft.		
Lugg. Capacity/Cargo Vol. Index	17.0 cu. ft.	81.9 cu. ft.		
			3RD COMPARTMENT	
			Head Room	32.8"
			Leg Room	28.4"
			Shoulder Room	55.6"
			Hip Room	38.6"
			CARGO AREA	
			Rear Opening Ht.	27.7"
			Cargo Height	32.1"
			Cargo Length - Front Seat	76.7"
			Cargo Length - 2nd Seat	42.8"
			Cargo Width (Wheelhouse)	37.9"
			Opening Width	48.3"

TAURUS

1986



Ford Division
Fleet Leasing and Rental Operations