

Collect Nectar points at participating Ford Dealers now. So keep a look out for the latest Ford offers at www.ford.co.uk/nectar or call the Ford Information Service on 0845 7111 888.*

FordMondeo

Dealer

Published by Ford Motor Company Limited, Brentwood, Essex, England.
Registered in England No. 235446.
FA 1262/20.
BJN 219265. FoE H07E.
PN 474503/1104/60m/GBR en
November 2004.
© Ford Motor Company Limited.

www.ford.co.uk

The Government fuel figures do not express or imply any guarantee of the fuel consumption of any particular car. The cars themselves have not been tested and there are inevitably differences between individual cars of the same model. In addition, a car may incorporate particular modifications. Furthermore, the driver's style and road and traffic conditions, as well as the extent to which the car has been driven and the standard of maintenance, will affect its fuel consumption. **Insurance groups** are only as recommended by the Association of British Insurers. You should always consult your insurance adviser for confirmation. **Illustrations, descriptions and specifications.** This catalogue was correct at the time of going to print. However, Ford policy is one of continuous product development. The right is reserved to change specifications, colours and prices of the models and items illustrated and described in this publication at any time. For the latest details always consult your Ford Dealer. **Optional equipment.** Throughout this publication, wherever a feature is described as being an 'Option' or 'Optional Fitment/Pack', etc., you should assume that it will be at extra cost to the base vehicle, unless specifically stated to the contrary. All models and colour combinations are subject to availability. ***Ford Information Service.** Calls are charged at national rate and may be recorded for training purposes.



Designed for living. Engineered to last.



Contents

11 The Ford Mondeo.
Engaging drive

12 Bodystyles and series

13 Exterior and interior
dimensions

14 LX

16 Zetec and Zetec Nav

18 Zetec S

20 Ghia

22 Ghia X

24 ST TDCi

26 ST220

28 Driving and technology

28 Engine data

29 Fuel, performance
and emissions

30 Model availability,
weights and loads

32 Transmissions

33 Insurance groups
Mechanical features

34 Safety and security

34 Intelligent Protection
System

35 Making safety a priority
Safety and security
features

36 Finance and services

38 Features and colours

39 Standard and optional
wheels

40 Exterior features

42 Audio and communication
systems

43 Interior features

45 Option packs

46 Trim and body colours











The Ford Mondeo. Engaging drive

There's something different about the Ford Mondeo. True, the distinctive profile is familiar enough, and the confidence-inspiring Intelligent Protection System and unrivalled driving experience are as dependable as ever. But settle inside and you'll hardly recognise it.

From the stylish centre stack, fresh switches and integrated controls to the sumptuous leather and Alcantara upholstery featured on selected models, almost every detail of the interior craftsmanship has benefited from our attention.

Outside, you'll find fresh alloy wheels, front grille and bumper, and restyled fog lights, plus revised rear light clusters and subtle chrome accents that help to convey an elevated sense of style.

We have enhanced your choice of engines and transmissions with the introduction of an advanced 1.8-litre SCi direct-injection petrol engine, and included new steering wheel-mounted, push-button sequential gearshift controls with the Durashift 5-tronic automatic transmission. We have even extended the range with an exclusive new ST TDCi. Powered by a potent new 155 PS 2.2-litre TDCi engine, our flagship diesel will satisfy even the most demanding driver.

All of which means that what was a safe decision is also an exceptionally smart one.

Note Some of the vehicle images in this brochure are of a pre-production model and are computer generated, therefore, the design/features on the final version may differ in various respects. In addition, some of the features shown on the vehicle may be optional.

Choose your Ford Mondeo in the following sections

- p12 **Bodystyles and series**
- p28 **Driving and technology**
- p34 **Safety and security**
- p36 **Finance and services**
- p38 **Features and colours**

Bodystyles and series

Whatever your driving needs, you will find a Ford**Mondeo** that will suit you perfectly. Take your pick from a comprehensive range of bodystyles and series, each carefully matched to deliver the definitive Ford**Mondeo** driving experience. Three different body designs allow you to choose between a sophisticated saloon, a dynamic hatchback and a versatile estate. Add eight distinctive series and you have the ultimate expression of choice. From the stylish and affordable LX to the self-confident Zetec and new Zetec Nav; from the dynamically styled Zetec S to the powerful new 155 PS ST TDCi and the exhilarating ST220; from the luxuriously appointed Ghia to the elegant and distinctive Ghia X. No matter which model you desire, you are sure to be impressed.



Exterior dimensions

	4-door	5-door	Estate
Exterior (mm)			
Overall length	4731	4731	4804
Overall width without mirrors	1812	1812	1812
Overall width with mirrors	1958	1958	1958
Overall height without roof rails	1429	1429	1441
Overall height with roof rails			1481
Wheelbase	2754	2754	2754
Ground clearance	130	130	130

5-door



Interior dimensions

	4-door	5-door	Estate
Front (mm)			
Effective headroom	1002	1002	1000
Maximum effective leg room	1071	1071	1071
Shoulder room	1396	1396	1396
Rear (mm)			
Effective headroom	952	963	1004
Minimum effective leg room	969	983	969
Shoulder room	1393	1393	1393
Luggage area (mm)			
Maximum cargo height			851
Maximum width between wheel arches			1141
Loadspace length to back of rear seat			1140
Maximum loadspace length to rear of front seats			1982
Stowable luggage (litres)*			
5-seat mode	500*	500*	540
2-seat mode (laden to roof)		1370	1700

*Measured using the VDA method. Dimensions may vary dependent on the model and equipment fitted. *With mini steel spare (450 with full-size spare on 4-door and 460 on 5-door).

Estate



LX

- Intelligent Protection System
- Electronic anti-lock braking system with Electronic Brake Assist and electronic brake-force distribution
- Cruise control
- Power/heated door mirrors
- Remote control central/double locking
- Perimeter and volume-sensing alarm
- Electrically-operated front windows
- 'Quickclear' heated front windscreen
- Manual air conditioning
- 6000 CD/radio
- Multifunction trip computer
- Windscreen wiper 'afterwipe' function
- Driver's seat power height adjustment
- Driver's seat manual lumbar adjustment
- White side repeat lenses
- Chrome front grille surround
- Tail-light clusters with silver indicator lenses
- Chrome switches
- Soft-feel front upper door trim



Style and function New bright metal-finished switches look good and feel pleasant to the touch.

Model shown is finished in Deep Rosso Red metallic paint (optional, at extra cost).



Zetec and Zetec Nav

Additional to LX

- 16" 7-spoke alloy wheels
- EATC (Electronic Automatic Temperature Control) air conditioning
- Sports suspension (4/5 door)
- Body colour door handles
- Body colour bodyside mouldings
- High-gloss B-pillar
- Front fog lamps
- Power-operated rear windows with global closing
- Rear seat centre armrest
- Fabric trim in a choice of two colours
- Leather steering wheel
- Leather gearshift knob with black insert and satin aluminium letters
- Illuminated vanity mirrors

Zetec Nav vs. Zetec*

- Low Line CD navigation system

*Please note, leather-trimmed steering wheel, power-operated rear windows and sports suspension are not included in Zetec Nav.



Low Line CD navigation system The Zetec Nav is equipped with a Low Line CD navigation system offering radio, route guidance and MP3-capable CD-player, all in one.

Model shown is Zetec, finished in Platinum metallic paint (optional, at extra cost).



Zetec S

Additional to Zetec

- 18" 5-spoke alloy wheels
- Self-levelling rear suspension (estate)
- Electronic Stability Programme (ESP) (standard on Duratec V6, optional with all other engines)
- Bodystyling kit
- Partial leather seats (standard on Duratec V6, optional with all other engines)
- Leather-look stitched vinyl armrest
- Polished steel front scuff plates



Seat comfort Ergonomically-designed seats ensure that you arrive at your destination feeling relaxed.

Model shown is finished in Octane Blue metallic paint (optional, at extra cost).



Choose your Ford Mondeo from the series

p14 LX p16 Zetec and Zetec Nav p18 Zetec S p20 Ghia p22 Ghia X p24 ST TDCi p26 ST220

Ghia

Additional to Zetec

- 16" 6-spoke alloy wheels
- Sony 6006 CD/radio with 6-disc in-dash autochanger
- Mirror puddle lights
- Power foldable and heated door mirrors
- Rain-sensing windscreen wipers
- Auto-lighting
- Self-levelling rear suspension (estate)
- Door handles with chrome insert
- Chrome inserts on upper door line (4- and 5-door only)
- Chrome bar in lower front bumper
- Rear seat centre armrest with integral stowage compartment/cup holders
- Clock with 'crème' background
- Auto-dimming rear-view mirror
- Leather-trimmed gearshift knob
- Leather-wrapped handbrake lever with chrome release button
- Reading lights, front and rear
- Front footwell illumination and rear passenger compartment light
- Front scuff plates and floor mats



Time for detail Nothing escaped the attention of our designers. Even the clock has been styled to enhance the ambience of each individual model series.

Model shown is finished in Machine Silver metallic paint (optional, at extra cost).



Choose your Ford Mondeo from the series

p14 LX p16 Zetec and Zetec Nav p18 Zetec S p20 Ghia p22 Ghia X p24 ST TDCi p26 ST220

Ghia X

Additional to Ghia

- 17" 7-spoke alloy wheels
- Electronic Stability Programme (ESP) (standard on Duratec V6, optional with all other engines)
- Leather or Alcantara seat trim
- Eight-way power-adjustable driver's seat
- Variable climate-controlled front seats
- Leather/real wood steering wheel
- Real wood insert on Durashift 5-tronic gearshift knob



Elegant control The Ghia X's interior is rounded off by an exclusive steering wheel with an ergonomically designed wood and leather rim.

Model shown is finished in Panther Black metallic paint (optional, at extra cost).



Choose your Ford Mondeo from the series

p14 LX p16 Zetec and Zetec Nav p18 Zetec S p20 Ghia p22 Ghia X p24 ST TDCi p26 ST220

ST TDCi

Additional to Zetec

- 18" 16-spoke alloy wheels
- Sony 6006 CD/radio with 6-disc in-dash autochanger
- Sports bodystyling kit
- Rear spoiler
- Thatcham Category 1 alarm
- Partial leather seats
- Heated front seats
- 2-way power-adjustable front passenger's seat
- Electronic Stability Programme (ESP)
- Power foldable and heated door mirrors
- Rain-sensing windscreen wipers
- Auto-lighting
- Self-levelling rear suspension (estate)
- Metallic paint (Performance Blue is optional, at extra cost)
- Single chrome-plated exhaust pipe
- Chrome gearshift knob
- Headlight jetwash



Comfort and control Partial leather seats and short-throw gearshift with purposeful chrome gear knob.

Model shown is finished in Machine Silver metallic paint.



Choose your Ford Mondeo from the series

p14 LX p16 Zetec and Zetec Nav p18 Zetec S p20 Ghia p22 Ghia X p24 ST TDCi p26 ST220

ST220

Additional to Zetec S

- 18" 16-spoke alloy wheels
- Sony 6006 CD/radio with 6-disc in-dash autochanger
- Thatcham Category 1 alarm
- Twin exhaust pipes
- Electronic Stability Programme (ESP)
- Durashift 6-speed manual transmission
- Mirror puddle lights
- Rear spoiler
- Metallic paint (Performance Blue is optional, at extra cost)
- Recaro front seats with eight-way driver's and front passenger's power-operated seats
- Leather trim
- Rear seat centre armrest with integral stowage compartment/cup holders
- Rear reading light
- Front footwell illumination
- Headlight jetwash



Positive control Leather-wrapped gearshift knob with short-throw gearshift action.

Model shown is finished in Performance Blue metallic paint (optional, at extra cost).



Choose your Ford Mondeo from the series

p14 LX p16 Zetec and Zetec Nav p18 Zetec S p20 Ghia p22 Ghia X p24 ST TDCi p26 ST220



1.8 Duratec SCi (left) Featuring direct petrol injection, the 1.8-litre Duratec SCi petrol engine combines the low fuel consumption of a diesel with the responsive power of a petrol engine. (Not appropriate for occasional and low mileage urban driving.)
Duratorq TDCi (right) The 2.0-litre Duratorq TDCi premium diesel engines use cutting-edge, common-rail technology for a more powerful and refined driving experience. Complying with European Stage IV emission standards, this has a financial benefit for the company-car driver as the 3% CO₂ diesel surcharge is not applicable. Stage III diesel and petrol engines (excluding SCi) do not have engine covers.

Driving and technology

True driving pleasure is an experience to be savoured. It’s a blend of refined power and responsive performance, a quick-shifting transmission, precise steering and agile handling. So the Ford**Mondeo** is available with some of the most dependable and technologically advanced engines in the world, plus a wide choice of transmissions. Select from a growing range of engines, including the pulse-racing new 2.2-litre 155 PS TDCi Stage III diesel (the most powerful diesel yet from Ford) and the exciting new 3.0-litre Duratec V6 petrol engine. There’s a choice of 5- or 6-speed Durashift manual transmissions* and the latest Durashift 5-tronic*, with its option of sequential manual or fully automatic gearshifting, for a naturally engaging drive.

Engine data

	Engine technical features	Maximum power*	Maximum torque*
1.8 Duratec HE 1798 cc	4 cylinders in-line; DOHC; 16 valves; alloy cylinder head and block; electronic multi-point fuel injection	92 kW (125 PS) at 6000 min ⁻¹ (rpm)	170 Nm at 4500 min ⁻¹ (rpm)
1.8 Duratec SCi** 1798 cc	4 cylinders in-line; DOHC; 16 valves; alloy cylinder head and block; direct injection with high pressure; electronic multi-point fuel injection system	96 kW (130 PS) at 6000 min ⁻¹ (rpm)	175 Nm at 4250 min ⁻¹ (rpm)
2.0 Duratec HE 1999 cc	4 cylinders in-line; DOHC; 16 valves; alloy cylinder head and block; electronic multi-point fuel injection	107 kW (145 PS) at 6000 min ⁻¹ (rpm)	190 Nm at 4500 min ⁻¹ (rpm)
2.5 Duratec V6 2495 cc	6 cylinders in V; DOHC on each bank; 24 valves; alloy cylinder head and block; electronic multi-point fuel injection	125 kW (170 PS) at 6000 min ⁻¹ (rpm)	220 Nm at 4250 min ⁻¹ (rpm)
3.0 Duratec V6 2967 cc	6 cylinders in V; DOHC on each bank; 24 valves; alloy cylinder head and block; electronic multi-point fuel injection	150 kW (204 PS) at 6000 min ⁻¹ (rpm)	280 Nm at 4900 min ⁻¹ (rpm)
3.0 Duratec ST V6 2967 cc	6 cylinders in V; DOHC on each bank; 24 valves; alloy cylinder head and block; electronic multi-point fuel injection	166 kW (226 PS) at 6250 min ⁻¹ (rpm)	285 Nm at 4900 min ⁻¹ (rpm)
2.0 Duratorq TDCi Diesel 1998 cc (Stage III and IV)	4 cylinders in-line; DOHC; 16 valves; alloy cylinder head; direct injection with high-pressure, common-rail, multi-point fuel injection system; turbocharger with intercooler and transient torque overboost function; electronic throttle; dual-mass flywheel	85 kW (115 PS) at 4000 min ⁻¹ (rpm)	280 / tba* Nm at 1900 min ⁻¹ (rpm)
2.0 Duratorq TDCi Diesel 1998 cc (Stage III)	4 cylinders in-line; DOHC; 16 valves; alloy cylinder head; direct injection with high-pressure, common-rail, multi-point fuel injection system; turbocharger with intercooler and transient torque overboost function; electronic throttle; dual-mass flywheel	96 kW (130 PS) at 3800 min ⁻¹ (rpm)	330 / 350* Nm at 1800 min ⁻¹ (rpm)

Engine data

	Engine technical features	Maximum power*	Maximum torque*
2.0 Duratorq TDCi Diesel 1998 cc (Stage IV)	4 cylinders in-line; DOHC; 16 valves; alloy cylinder head; direct injection with high-pressure, common-rail, multi-point fuel injection system; turbocharger with intercooler and transient torque overboost function; electronic throttle; dual-mass flywheel	96 kW (130 PS) at 3500 min ⁻¹ (rpm)	330 / 350* Nm at 1800 min ⁻¹ (rpm)
2.2 Duratorq TDCi Diesel 2198 cc (Stage III)	4 cylinders in-line; DOHC; 16 valves; alloy cylinder head; direct injection with high-pressure, common-rail, multi-point fuel injection system; turbocharger with intercooler and transient torque overboost function; electronic throttle; dual-mass flywheel	114 kW (155 PS) at 3500 min ⁻¹ (rpm)	360 / 400* Nm at 1800 min ⁻¹ (rpm)

*Tested in accordance with ISO 1585. *With transient overboost. **Not appropriate for occasional and low mileage urban driving.

Fuel, performance and emissions

	Derivative(s)	CO ₂ emissions (g/km) ^{oo}	Fuel consumption in L/100 km (mpg) ^{oo}			Performance*		
			Urban	Extra Urban	Combined	Max. speed (mph)	0-62 mph (secs)	31-62 mph* (secs)
4-door Saloon								
1.8 Duratec HE (125 PS)	LX, Zetec	182	11.0 (25.7)	5.6 (50.5)	7.6 (37.2)	127	10.8	14.3
1.8 Duratec SCi (130 PS)	Ghia, Ghia X	173	9.9 (28.5)	5.7 (49.6)	7.2 (39.2)	129	10.5	18.7
2.0 Duratec HE (145 PS)	LX, Zetec, Zetec S, Ghia, Ghia X	187	11.2 (25.2)	5.8 (48.7)	7.8 (36.2)	134	9.8	12.6
2.0 Duratec HE (145 PS), Durashift 4-speed automatic	LX, Zetec, Ghia, Ghia X	218	12.6 (22.4)	7.2 (39.2)	9.1 (31.0)	118	11.4	n/a
2.5 Duratec V6 (170 PS), Durashift 5-tronic	Ghia X	244	15.1 (18.7)	7.4 (38.2)	10.2 (27.7)	134	10.3	n/a
3.0 Duratec V6 (204 PS), Durashift 6-speed manual	Zetec S, Ghia X	247	15.1 (18.7)	7.5 (37.7)	10.3 (27.4)	149	7.9	11.7
3.0 Duratec ST V6 (226 PS), Durashift 6-speed manual	ST220	249	14.5 (19.5)	8.0 (35.3)	10.4 (27.2)	155	7.6	11.3
2.0 Duratorq TDCi Diesel (115 PS) (EEC Stage III)	LX, Zetec, Zetec Nav, Ghia	148	7.8 (36.2)	4.4 (64.2)	5.6 (50.5)	122	10.8	10.7
2.0 Duratorq TDCi Diesel (115 PS) (EEC Stage IV)	LX, Zetec, Zetec Nav, Ghia	154	7.7 (36.7)	4.6 (61.4)	5.8 (48.7)	122	10.8	10.7
2.0 Duratorq TDCi Diesel (115 PS), Durashift 6-speed manual (EEC Stage III)	LX, Zetec, Zetec Nav, Ghia	151	7.8 (36.2)	4.7 (60.1)	5.7 (49.6)	124	10.8	16.5
2.0 Duratorq TDCi Diesel (115 PS), Durashift 6-speed manual (EEC Stage IV)	LX, Zetec, Zetec Nav, Ghia	159	8.1 (34.9)	4.8 (58.9)	6.0 (47.1)	124	10.8	16.5
2.0 Duratorq TDCi Diesel (130 PS), Durashift 6-speed manual (EEC Stage III)	LX, Zetec, Zetec Nav, Zetec S, Ghia, Ghia X	154	7.7 (36.7)	4.7 (60.1)	5.8 (48.7)	129	9.8	14.5
2.0 Duratorq TDCi Diesel (130 PS), Durashift 6-speed manual (EEC Stage IV)	LX, Zetec, Zetec Nav, Zetec S, Ghia, Ghia X	159	8.1 (34.9)	4.8 (58.9)	6.0 (47.1)	129	9.8	14.5
2.0 Duratorq TDCi Diesel (130 PS), Durashift 5-tronic (EEC Stage III)	Ghia X	196	10.2 (27.7)	5.8 (48.7)	7.4 (38.2)	124	11.3	n/a
2.2 Duratorq TDCi Diesel (155 PS), Durashift 6-speed manual (EEC Stage III)	Ghia X, ST TDCi	161	8.2 (34.5)	4.9 (57.7)	6.1 (46.3)	137	8.7	11.0
5-door Saloon								
1.8 Duratec HE (125 PS)	LX, Zetec	182	11.0 (25.7)	5.6 (50.5)	7.6 (37.2)	127	10.9	14.5
1.8 Duratec SCi (130 PS)	Ghia, Ghia X	173	9.9 (28.5)	5.7 (49.6)	7.2 (39.2)	129	10.6	18.9
2.0 Duratec HE (145 PS)	LX, Zetec, Zetec S, Ghia, Ghia X	187	11.2 (25.2)	5.8 (48.7)	7.8 (36.2)	134	9.9	12.7
2.0 Duratec HE (145 PS), Durashift 4-speed automatic	LX, Zetec, Ghia, Ghia X	218	12.6 (22.4)	7.2 (39.2)	9.1 (31.0)	118	11.5	n/a
2.5 Duratec V6 (170 PS), Durashift 5-tronic	Ghia X	244	15.1 (18.7)	7.4 (38.2)	10.2 (27.7)	134	10.4	n/a
3.0 Duratec V6 (204 PS), Durashift 6-speed manual	Zetec S, Ghia X	247	15.1 (18.7)	7.5 (37.7)	10.3 (27.4)	149	7.9	11.8
3.0 Duratec ST V6 (226 PS), Durashift 6-speed manual	ST220	249	14.5 (19.5)	8.0 (35.3)	10.4 (27.2)	155	7.6	11.4
2.0 Duratorq TDCi Diesel (115 PS) (EEC Stage III)	LX, Zetec, Zetec Nav, Ghia	148	7.8 (36.2)	4.4 (64.2)	5.6 (50.5)	122	10.8	10.7
2.0 Duratorq TDCi Diesel (115 PS) (EEC Stage IV)	LX, Zetec, Zetec Nav, Ghia	154	7.7 (36.7)	4.6 (61.4)	5.8 (48.7)	122	10.8	10.7
2.0 Duratorq TDCi Diesel (115 PS), Durashift 6-speed manual (EEC Stage III)	LX, Zetec, Zetec Nav, Ghia	151	7.8 (36.2)	4.7 (60.1)	5.7 (49.6)	124	10.8	16.5
2.0 Duratorq TDCi Diesel (115 PS), Durashift 6-speed manual (EEC Stage IV)	LX, Zetec, Zetec Nav, Ghia	159	8.1 (34.9)	4.8 (58.9)	6.0 (47.1)	124	10.8	16.5

Fuel, performance and emissions

	Derivative(s)	CO ₂ emissions (g/km) ⁹⁰	Fuel consumption in L/100 km (mpg) ⁹⁰			Performance ^a		
			Urban	Extra Urban	Combined	Max. speed (mph)	0-62 mph (secs)	31-62 mph* (secs)
2.0 Duratorq TDCi Diesel (115 PS), Durashift 5-tronic (EEC Stage III)	LX, Zetec	196	10.2 (27.7)	5.8 (48.7)	7.4 (38.2)	120	12.6	n/a
2.0 Duratorq TDCi Diesel (130 PS), Durashift 6-speed manual (EEC Stage III)	LX, Zetec, Zetec Nav, Zetec S, Ghia, Ghia X	154	7.7 (36.7)	4.7 (60.1)	5.8 (48.7)	129	9.8	14.5
2.0 Duratorq TDCi Diesel (130 PS), Durashift 6-speed manual (EEC Stage IV)	LX, Zetec, Zetec Nav, Zetec S, Ghia, Ghia X	159	8.1 (34.9)	4.8 (58.9)	6.0 (47.1)	129	9.8	14.5
2.0 Duratorq TDCi Diesel (130 PS), Durashift 5-tronic (EEC Stage III)	Zetec S, Ghia, Ghia X	196	10.2 (27.7)	5.8 (48.7)	7.4 (38.2)	124	11.3	n/a
2.2 Duratorq TDCi Diesel (155 PS), Durashift 6-speed manual (EEC Stage III)	Ghia X, ST TDCi	161	8.2 (34.5)	4.9 (57.7)	6.1 (46.3)	137	8.7	11.0
5-door Estate								
1.8 Duratec HE (125 PS)	LX, Zetec	186	11.1 (25.5)	5.8 (48.7)	7.8 (36.2)	124	11.2	15.0
1.8 Duratec SCi (130 PS)	Ghia, Ghia X	179	10.1 (28.0)	5.9 (47.9)	7.4 (38.2)	126	10.9	19.4
2.0 Duratec HE (145 PS)	LX, Zetec, Zetec S, Ghia, Ghia X	191	11.3 (25.0)	6.0 (47.1)	8.0 (35.3)	131	10.2	13.2
2.0 Duratec HE (145 PS), Durashift 4-speed automatic	LX, Zetec, Ghia, Ghia X	221	12.7 (22.2)	7.3 (38.7)	9.2 (30.7)	116	11.8	n/a
2.5 Duratec V6 (170 PS), Durashift 5-tronic	Ghia X	251	15.3 (18.5)	7.7 (36.7)	10.5 (26.9)	131	10.7	n/a
3.0 Duratec V6 (204 PS), Durashift 6-speed manual	Zetec S, Ghia X	252	15.3 (18.5)	7.7 (36.7)	10.5 (26.9)	144	8.1	12.2
3.0 Duratec ST V6 (226 PS), Durashift 6-speed manual	ST220	254	14.6 (19.4)	8.2 (34.5)	10.6 (26.7)	150	7.8	11.8
2.0 Duratorq TDCi Diesel (115 PS) (EEC Stage III)	LX, Zetec, Zetec Nav, Ghia	153	7.9 (35.8)	4.6 (61.4)	5.8 (48.7)	121	11.2	11.2
2.0 Duratorq TDCi Diesel (115 PS) (EEC Stage IV)	LX, Zetec, Zetec Nav, Ghia	157	7.8 (36.2)	4.8 (58.9)	5.9 (47.9)	121	11.2	11.2
2.0 Duratorq TDCi Diesel (115 PS), Durashift 6-speed manual (EEC Stage III)	LX, Zetec, Zetec Nav, Ghia	154	7.9 (35.8)	4.8 (58.9)	5.8 (48.7)	121	11.2	17.0
2.0 Duratorq TDCi Diesel (115 PS), Durashift 6-speed manual (EEC Stage IV)	LX, Zetec, Zetec Nav, Ghia	163	8.3 (34.0)	5.0 (56.5)	6.2 (45.6)	122	11.2	17.0
2.0 Duratorq TDCi Diesel (115 PS), Durashift 5-tronic (EEC Stage III)	LX, Zetec	198	10.2 (27.7)	5.9 (47.9)	7.5 (37.7)	118	13.0	n/a
2.0 Duratorq TDCi Diesel (130 PS), Durashift 6-speed manual (EEC Stage III)	LX, Zetec, Zetec Nav, Zetec S, Ghia, Ghia X	158	7.8 (36.2)	4.9 (57.7)	6.0 (47.1)	127	10.1	14.9
2.0 Duratorq TDCi Diesel (130 PS), Durashift 6-speed manual (EEC Stage IV)	LX, Zetec, Zetec Nav, Zetec S, Ghia, Ghia X	163	8.3 (34.0)	5.0 (56.5)	6.2 (45.6)	127	10.1	14.9
2.0 Duratorq TDCi Diesel (130 PS), Durashift 5-tronic (EEC Stage III)	Zetec S, Ghia, Ghia X	198	10.2 (27.7)	5.9 (47.9)	7.5 (37.7)	122	11.6	n/a
2.2 Duratorq TDCi Diesel (155 PS), Durashift 6-speed manual (EEC Stage III)	Ghia X, ST TDCi	166	8.4 (33.6)	5.1 (55.4)	6.3 (44.8)	134	9.0	11.5

*In 4th gear for 5-speed manual transmissions, in 5th gear for 6-speed manual transmissions. ^aFord test figures. ⁹⁰All CO₂ emissions figures in g/km and fuel consumption figures in L/100 km are from officially approved tests in accordance with EEC Directive 1999/100/EC. The CO₂ emissions and fuel consumption test figures shown in the chart do not express or imply any guarantee of the emissions or fuel consumption of a car of the class in question (see back cover). All the figures are based on tests conducted on vehicles with core equipment level and with standard wheels and tyres; optional or accessory wheels and tyres may have an effect on the emissions and fuel consumption of a vehicle. **Urban** An engine started from cold in laboratory conditions operated at varying speeds, maximum 31 mph, average 12 mph over a theoretical distance of 2.5 miles (4 km). **Extra Urban** Conducted immediately after the urban cycle, it consists of half steady speed driving and half varying speed driving, maximum 75 mph over a distance of 4.3 miles (7 km). **Combined** This is an average of the two parts of the test, weighted by the distances covered in each part. **Note** All vehicles are 5-speed manual except where auto, Durashift 5-tronic or 6-speed stated. All petrol engines are equipped with a catalytic converter.

Model availability, weights and loads

	Kerbweights (kg) [#] LX	Zetec / Zetec Nav	Zetec S	Ghia	Ghia X	ST TDCi	ST220	Gross Train Mass (vehicle and trailer weight) (kg)	Technically permissible maximum laden mass (Gross Vehicle Mass)
4-door Saloon									
1.8 Duratec HE (125 PS)	1364	1371						3115	1895
1.8 Duratec SCi (130 PS)				1405	1405			3240	1935
2.0 Duratec HE (145 PS)	1369	1372	1372	1378	1378			3460	1905
2.0 Duratec HE (145 PS), Durashift 4-speed automatic ^{##}	1391	1395		1419	1419			3460	1935
2.5 Duratec V6 (170 PS), Durashift 5-tronic					1503			3885	2010
3.0 Duratec V6 (204 PS), Durashift 6-speed manual			1487		1503			3850	1985
3.0 Duratec ST V6 (226 PS), Durashift 6-speed manual							1495	n/a	1975

Model availability, weights and loads

	Kerbweights (kg) [#] LX	Zetec / Zetec Nav	Zetec S	Ghia	Ghia X	ST TDCi	ST220	Gross Train Mass (vehicle and trailer weight) (kg)	Technically permissible maximum laden mass (Gross Vehicle Mass)
2.0 Duratorq TDCi Diesel (115 PS) (EEC Stage III and IV)	1484	1487/ n/a		1504				3750	2020
2.0 Duratorq TDCi Diesel (115 PS), Durashift 6-speed manual (EEC Stage III and IV)	1493	1496 / n/a		1505				3750	2030
2.0 Duratorq TDCi Diesel (115 PS), Durashift 5-tronic (EEC Stage III)	1523	1526						3795	2065
2.0 Duratorq TDCi Diesel (130 PS), Durashift 6-speed manual (EEC Stage III and IV)	1493	1496	1496	1505	1505			3750	2030
2.0 Duratorq TDCi Diesel (130 PS), Durashift 5-tronic (EEC Stage III)	1524	1526		1543				3795	2065
2.2 Duratorq TDCi Diesel (155 PS), Durashift 6-speed manual (EEC Stage III)					1486	1474		3750	2005
5-door Saloon									
1.8 Duratec HE (125 PS)	1375	1380						3125	1910
1.8 Duratec SCi (130 PS)				1405	1405			3240	1945
2.0 Duratec HE (145 PS)	1383	1388	1388	1386	1386			3460	1915
2.0 Duratec HE (145 PS), Durashift 4-speed automatic**	1411	1415 / n/a		1432	1432			3460	1950
2.5 Duratec V6 (170 PS), Durashift 5-tronic					1515			3885	2025
3.0 Duratec V6 (204 PS), Durashift 6-speed manual			1481		1493			3850	1995
3.0 Duratec ST V6 (226 PS), Durashift 6-speed manual							1490	n/a	1990
2.0 Duratorq TDCi Diesel (115 PS) (EEC Stage III and IV)	1496	1505		1523				3750	2025
2.0 Duratorq TDCi Diesel (115 PS), Durashift 6-speed manual (EEC Stage III and IV)	1505	1516		1531				3750	2035
2.0 Duratorq TDCi Diesel (115 PS), Durashift 5-tronic	1536	1546 / n/a						3795	2075
2.0 Duratorq TDCi Diesel (130 PS), Durashift 6-speed manual (EEC Stage III and IV)	1505	1516	1516	1531	1531			3750	2035
2.0 Duratorq TDCi Diesel (130 PS), Durashift 5-tronic (EEC Stage III)	1536	1546 / n/a	1546	1562	1562			3795	2075
2.2 Duratorq TDCi Diesel (155 PS), Durashift 6-speed manual (EEC Stage III)					1495	1484		3750	2015
5-door Estate									
1.8 Duratec HE (125 PS)	1434	1439						3105	2065
1.8 Duratec SCi (130 PS)				1490	1490			3240	2100
2.0 Duratec HE (145 PS)	1437	1440	1440	1457	1457			3495	2070
2.0 Duratec HE (145 PS), Durashift 4-speed automatic**	1470	1469		1490	1490			3495	2095
2.5 Duratec V6 (170 PS), Durashift 5-tronic					1566			3885	2175
3.0 Duratec V6 (204 PS), Durashift 6-speed manual			1559		1571			3850	2170
3.0 Duratec ST V6 (226 PS), Durashift 6-speed manual							1549	n/a	2145
2.0 Duratorq TDCi Diesel (115 PS) (EEC Stage III and IV)	1555	1560		1578				3750	2185
2.0 Duratorq TDCi Diesel (115 PS), Durashift 6-speed manual (EEC Stage III and IV)	1564	1569		1587				3750	2195
2.0 Duratorq TDCi Diesel (115 PS), Durashift 5-tronic	1595	1600						3795	2235
2.0 Duratorq TDCi Diesel (130 PS), Durashift 6-speed manual (EEC Stage III)	1564	1569	1569	1587	1587			3750	2195
2.0 Duratorq TDCi Diesel (130 PS), Durashift 6-speed manual (EEC Stage IV)	1564	1569	1569	1587	1587			3750	2195
2.0 Duratorq TDCi Diesel (130 PS), Durashift 5-tronic (EEC Stage III)	1595	1600	1600	1615	1615			3795	2235
2.2 Duratorq TDCi Diesel (155 PS), Durashift 6-speed manual (EEC Stage III)					1574	1562		3750	2190

^aRepresents the minimum kerbweight assuming full fluid levels and 90% fuel levels, including driver at 75 kg; subject to manufacturing tolerances and options, etc., fitted. ^{##} = Optional transmission. **Key** This table shows the availability of engine and gearbox combinations on Ford Mondeo models and resulting kerbweights. **Note** All vehicles are 5-speed manual except where auto, Durashift 5-tronic or 6-speed stated. All petrol engines are equipped with a catalytic converter. **Towing limits** Figures quoted represent the maximum braked trailer towing mass, with ability for the vehicle to restart on a 12% gradient, either a) max. permissible or b) at Gross Vehicle Mass. The performance and economy of all models will be reduced when used for towing. ST220 is not designed to tow. For further guidance, refer to the National Caravan Council's Towing Code. **Roof rack load (estate)** is a maximum of 100 kg.



The Durashift 5-tronic transmission offers the choice of fully automatic gear changes, or sequential manual shifting using new steering wheel-mounted controls. Available as an option on selected petrol and diesel engines, at extra cost. Also shown is the High Line DVD navigation system, which features a clear, full colour map display with touch-screen function, voice guidance system and MP3 playback capability.



Durashift 6-speed manual transmission The new Durashift 6-speed transmission combines greater in-gear flexibility and top speed potential with enhanced fuel economy and refinement.



Durashift 5-tronic Optional Durashift 5-tronic transmission now features steering wheel-mounted controls for fingertip gearshift control. In addition, all Ford Mondeos now come equipped with cruise control as standard, to help reduce stress and fatigue, particularly on long motorway journeys.

Transmission availability

To put the power onto the road, the Ford Mondeo offers a wide choice of transmission options. 1.8 and 2.0-litre Duratec petrol and 115 PS Duratorq TDCi Stage IV diesel models are equipped with a slick-shifting Durashift 5-speed manual transmission and a smooth hydraulic clutch. An exciting new Durashift 6-speed manual transmission is also available. Fitted as standard with the 1.8-litre Duratec SCi and V6 petrol engines, as well as the 130 PS and new 2.2-litre 155 PS Duratorq TDCi diesel engines, it enhances the car’s performance and helps to make it even more fuel-efficient, regardless of driving conditions.

For the ultimate in driver choice, take a look at the innovative Durashift 5-tronic transmission. It’s a smooth-shifting automatic when you’re in a relaxed mood, or a fun-to-drive 5-speed sequential manual with steering wheel-mounted controls if you want to take more control (available on selected models, at extra cost).

Should you prefer a little less involvement, the Durashift 4-speed fully automatic option could be for you. Smooth and effortless in operation, it handles the 2.0-litre Duratec petrol engine’s power with ease (optional, at extra cost).

Insurance groups

	LX	Zetec / Zetec Nav	Zetec S	Ghia	Ghia X	ST TDCi	ST220
1.8 Duratec HE (125 PS)	8E	8E					
1.8 Duratec SCi (130 PS)				9E	10E		
2.0 Duratec HE (145 PS)	9E	10E	10E	10E	11E		
2.0 Duratec HE (145 PS), Durashift 4-speed automatic	9E	10E / n/a		10E	11E		
2.5 Duratec V6 (170 PS), Durashift 5-tronic					15A		
3.0 Duratec V6 (204 PS), Durashift 6-speed manual			16A		16A		
3.0 Duratec ST V6 (226 PS), Durashift 6-speed manual							16E
2.0 Duratorq TDCi Diesel (115 PS)	9E	9E		9E			
2.0 Duratorq TDCi Diesel (115 PS), Durashift 5-tronic	9E	9E / n/a					
2.0 Duratorq TDCi Diesel (130 PS), Durashift 6-speed manual	9E	9E	10E	9E	10E		
2.0 Duratorq TDCi Diesel (130 PS), Durashift 5-tronic	9E	9E/ n/a	10E	9E	10E		
2.2 Duratorq TDCi Diesel (155 PS), Durashift 6-speed manual					13E	13E	

E = Exceeds security requirement and group rating has been reduced. A = Meets security requirement for model concerned and group rating has not been affected.

Mechanical features

	LX	Zetec / Zetec Nav	Zetec S	Ghia	Ghia X	ST TDCi	ST220
Brakes							
Dual circuit, diagonally split with front and rear discs	●	●	●	●	●	●	●
Anti-lock – Electronically-controlled with electronic brake-force distribution (EBD)	●	●	●	●	●	●	●
Emergency Brake Assist (EBA) (not in combination with IVD)	●	●	●	●	●	●	●
Interactive Vehicle Dynamics (IVD) including Electronic Stability Programme (ESP) and Electronic Brake Assist (EBA) (standard on V6)	○	○	○	○	○	●	●
Fuel tank							
58.5 litres	●	●	●	●	●	●	●
Fuel cut-off – Inertia switch (petrol only)	●	●	●	●	●	●	●
Steering							
Power-assisted rack-and-pinion	●	●	●	●	●	●	●
Suspension and body							
Front – Independent with MacPherson struts, anti-roll bar	●	●	●	●	●	●	●
Rear – Quadralink independent, anti-roll bar	●	●	●	●	●	●	●
Rear – Short and long arm (estate only), anti-roll bar	●	●	●	●	●	●	●
Rear – Self-levelling (estate only. Standard on V6 models, and if vehicle is specified with unique sports suspension)	○	○	●	●	●	●	●
Suspension – Unique sports (standard on Zetec 4-door and 5-door models, optional on Zetec estate)	○	● / n/a	●	○	○	●	●
Suspension and body							
Heavy-duty battery (petrol engines only)	○	○	○	○	○		○
Turning circle							
Kerb to kerb 11.64 m	●	●	●	●	●	●	●

● = Standard, ○ = Optional, at extra cost.

Safety and security

It's unlikely that you would ever compromise the well-being and protection of your family. Neither would we. So feel secure in the knowledge that an Intelligent Protection System is standard on every new **Ford Mondeo** to provide exceptional levels of protection for all its occupants. Linked to a network of sensors located at strategic points throughout the car, it keeps constant watch over the driver and passengers. If danger should threaten, the system will assess the severity of the incident and respond in a split second, activating the appropriate safety system to provide outstanding passenger protection. A reassuring thought, isn't it?

Intelligent Protection System

At the heart of the Ford Mondeo's Intelligent Protection System is a centralised computer module. Linked to a neural network of sensors located at strategic points around the car, it keeps constant watch over the occupants, and monitors data including the driver's seat position and whether the driver is wearing a seat belt.

In the event of an accident, the Intelligent Protection System measures the seriousness of the impact through the front, side, and rear sensors and automatically activates the most effective safety features.

Dual-stage driver's and front passenger's airbags* are fitted as standard. So too are front seat side airbags, and side curtain airbags that descend from the headlining above the doors in a side impact, helping to protect those in the front and rear of the car.



Dual-stage driver's and front passenger's airbags*

New dual-stage airbags are designed to inflate at two different rates depending on crash severity and, in the case of the driver's airbag, the position of the driver's seat.

Curtain airbags

In the event of a side impact, side curtain airbags descend from the headlining above the doors to help protect front and rear passengers.

Side airbags

Side airbags are built into both front seats to help cushion the chest and thorax in a side impact, regardless of the seat position.



Front and rear seat belts

Pyrotechnic front seat belt pre-tensioners take the slack out of the webbing in the event of an impact, while load-limiting retractors release a small amount of belt to help reduce chest loading.

Anti-whiplash front head restraints

The front head restraints are deployed both upward and forward to help reduce the risk of whiplash injuries in the event of a severe impact.



Sensor network

Strategically-positioned sensors supply vital information to the central processing unit at the centre of the Intelligent Protection System.

Belt-Minder™

Mondeo's Belt-Minder™ system gently reminds the driver to fasten their seat belt.

Anti-lock brakes

Ford Mondeo's anti-lock brakes (ABS) with electronic brake-force distribution (EBD) help to reduce speed swiftly and safely.

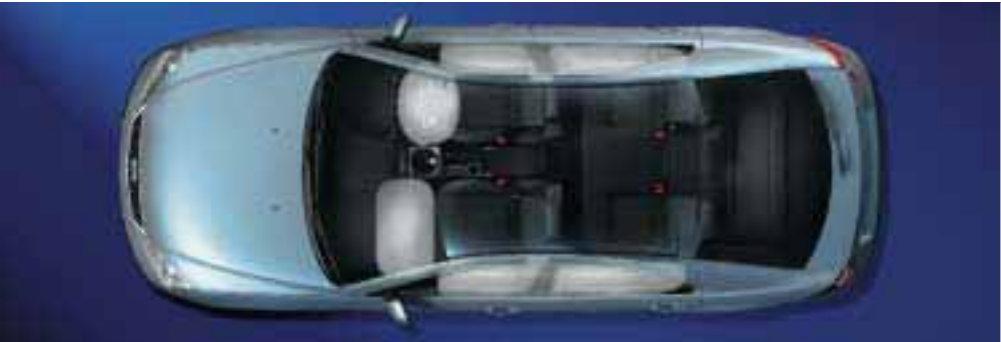


Emergency Brake Assist

Together with its sophisticated chassis, suspension and braking system, the Ford Mondeo has Emergency Brake Assist (EBA) as standard. This advanced system is designed to help reduce emergency stopping distances by reinforcing the driver's braking effort. When activated, EBA will automatically apply the brakes to their maximum pressure until the driver releases the brake pedal.

Decoupling brake pedal

To help reduce the risk of leg injury, the brake pedal is designed to collapse safely at the moment of impact.



Advanced safety Offering a total of six airbags, you can rest assured that the Ford Mondeo's advanced Intelligent Protection System is comprehensively equipped to care for your welfare.



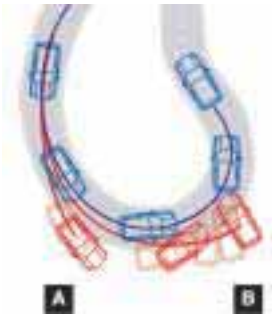
Seat engineering Mondeo's seats have comfort and safety built-in. All seats have anti-submarining bases as standard, while the front seats incorporate side thorax airbags and anti-whiplash head restraints.

Making safety a priority

The underlying strength of the Ford Mondeo's safety concept is its ultra-strong safety cell. Coupled with energy-absorbing zones front and rear, it provides a rugged survival compartment for you and your passengers. In every Ford Mondeo you will find an advanced seat belt system. Designed to work in conjunction with the airbags, the seat belts help to provide the ultimate in passenger protection.

An integrated child booster cushion is available* on selected models and is suitable for youngsters aged between three and twelve years.

To help reduce the risk of theft, we have equipped every Ford Mondeo with high-security locks, perimeter and volume sensing alarm and a smart 'Safeguard' engine immobiliser.



— Vehicle with ESP.
— Without ESP.

A Vehicle experiences understeer on approach.

B Vehicle experiences oversteer on exit to bend.

Interactive Vehicle Dynamics (IVD)

Using space-derived technology, Mondeo's Electronic Stability Programme (ESP) including traction control, standard on Duratec V6 models, employs yaw sensors and a gyroscope to help the driver maintain control of the car in critical driving situations. The sophisticated system senses when the vehicle is deviating from the driver's chosen line and automatically applies the necessary power and braking adjustments to correct its road position.

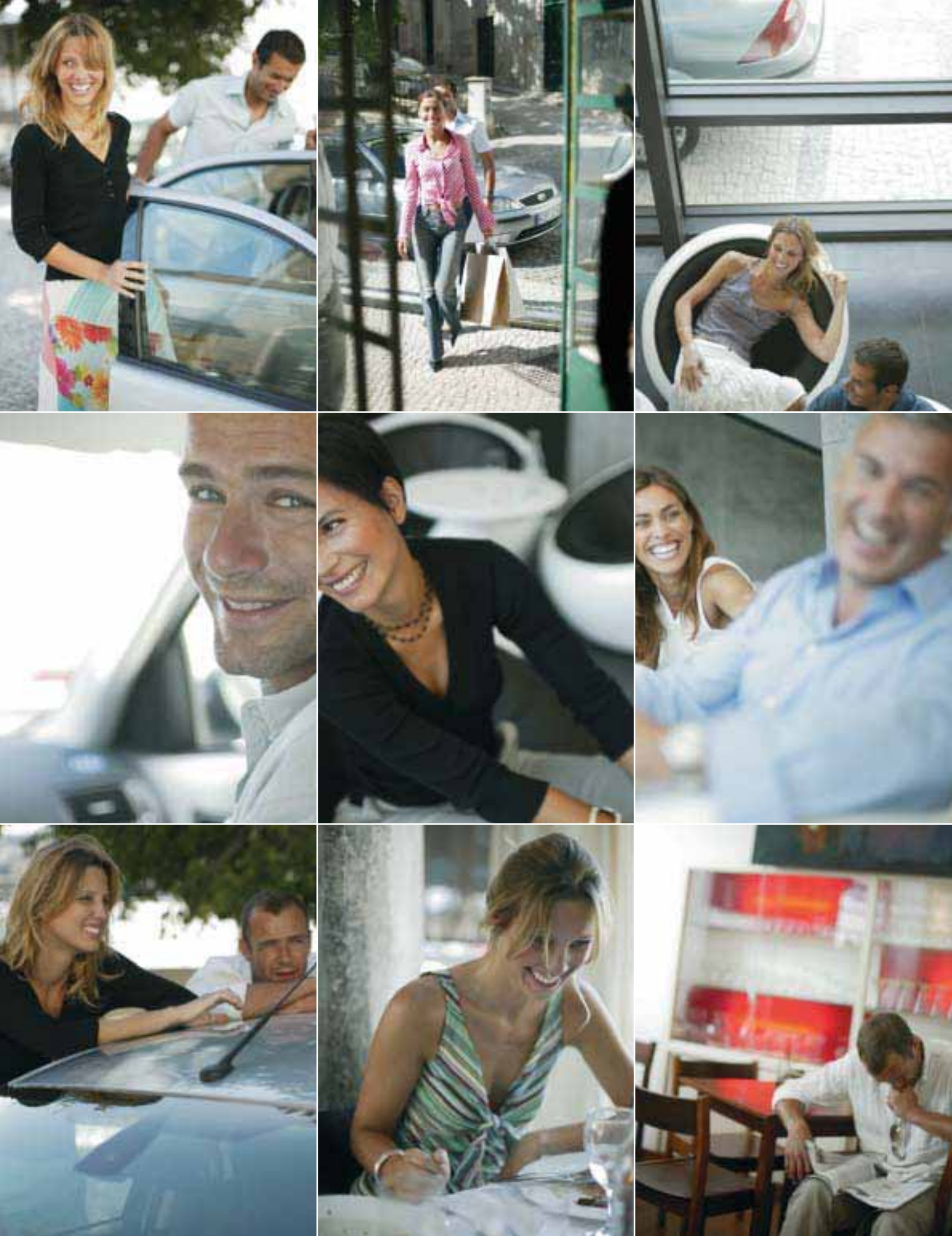
Safety and security features

	LX	Zetec / Zetec Nav	Zetec S	Ghia	Ghia X	ST TDCi	ST220
Intelligent Protection System (IPS)	●	●	●	●	●	●	●
Airbag – Dual stage driver's and front passenger's*	●	●	●	●	●	●	●
Airbags – Front side airbags	●	●	●	●	●	●	●
Airbags – Front side curtain airbags deployed from the headlining	●	●	●	●	●	●	●
Seat belt reminder system – Driver's seat	●	●	●	●	●	●	●
Side impact door beams, front and rear, steel safety cage, engine compartment cross-beam and energy-absorbing subframe	●	●	●	●	●	●	●
Steering column – Additional bracing	●	●	●	●	●	●	●
Immobiliser – Safeguard system	●	●	●	●	●	●	●
Alarm – Perimeter and volume sensing	●	●	●	●	●	●	●
Alarm – Perimeter and volume sensing (CAT 1 Thatcham approved)	●	●	●	●	●	●	●
Locks – Anti-burst, high-security, shielded with strengthened childproof mountings on rear doors	●	●	●	●	●	●	●
Locks – Remote control central/double locking with 2-stage unlocking, interior light illumination on entry and auto-relocking	●	●	●	●	●	●	●
Locks – Two remote keys, global closing	●	●	●	●	●	●	●
Remote fuel filler flap release	●	●	●	●	●	●	●
Vehicle Identification Number (VIN) – Visible	●	●	●	●	●	●	●

● = Standard.

*Not available in conjunction with partial leather trim and heated rear seats.

*Note: A child seat should never be placed in the front passenger seat when the Ford vehicle is equipped with an operational front passenger's airbag. The safest place for children is properly restrained on the rear seat.



Finance and services

Across the UK, a dedicated network of Ford Dealers is equipped and trained to meet the needs of today's drivers. Because of our coveted reputation for quality and reliability, from the moment your new vehicle leaves the showroom, you are assured of lasting, attentive service in many ways. Ford not only cares through Dealers, we also offer a variety of finance and leasing schemes to suit the needs of both the private and business customer. With our wide choice of plans and services no one is more committed to delivering complete motoring confidence and total peace of mind than Ford.

FordCredit

As part of Ford Motor Company Limited, Ford Credit offers convenient and competitive financial services to Ford customers. Choose, try, finance and insure your Ford – without having to leave the showroom.

Ford Options

Ford Options is the flexible way to finance your Ford. If you are looking to renew your vehicle more often, this is the ideal plan. At the end of the agreement, choose which option suits you best – own the vehicle, return it or choose a new one.

Ford Acquire

Ford Acquire is a simple method of vehicle finance for private customers. Convenient to arrange, and with flexible terms to suit your needs, owning your Ford has never been so easy.

Ford Business Partner

As a specialist division of Ford Credit dedicated to partnering businesses, Ford Business Partner will work with you to achieve a complete Contract Hire transport solution.

Ford Insure

Ford Insure offers a wide range of great value products for you and your Ford including Comprehensive Motor Insurance, Payment Protection Plan* and Guaranteed Asset Protection**. When you purchase a Ford from a Ford Dealer, you will receive 7 days' Driveaway cover*** free when you call Ford Insure for a no-obligation annual quotation.

What's the next step?

Your local Ford Dealer will be pleased to help if you have any further queries and advise you of current special promotions. Your Dealer can also supply a personalised quotation for the finance plan and vehicle of your choice.

To find your local Ford Dealer, please call 0845 7111 888.

You can also obtain a personalised quotation for the finance plan of your choice.

Services

Company Car Drivers

Talkback – the company car drivers' club offers members extended test drives, tax and buying advice as well as special offers and invitations to special driver events. To join, log on to www.talkbackclub.com or call 0845 605 55 66 – it's free and you don't even have to drive a Ford.

Ford Mobility

MAGIC (Mobility and General Information Centre) is a Ford-dedicated care centre created to provide free and comprehensive information on all motoring and mobility issues to anyone requiring such assistance. MAGIC has many special offers for HRDLA recipients, or Motability scheme users, call free on 0800 240 241.

Ford Protect

Every new Ford car sold is protected by 12 months' unlimited mileage manufacturer's warranty, plus the option of extending this warranty with a no-cost 3-year/60,000 miles Ford Protect Plan. Upgrades are also available, giving you the option of worry-free motoring for up to 5 years.

Ford Rapid Fit

The national fast-fit network backed by Ford, offering you the convenience of a 'no-appointment-necessary, while-you-wait' service covering tyres, exhausts, brakes, batteries and much more. There are over 300 sites nationwide.

Ford Accident Repair Centres

If your Ford is involved in an accident, your Ford Dealer is best placed to return it to its pre-accident condition. Dealerships displaying the Ford Accident Repair Centre sign all meet the rigorous customer service and repair quality standards laid down by Ford, and offer a three-year repair guarantee.

Ford Customer Relationship Centre

In the unlikely event that your Ford Dealer can't help you or you need to speak to Ford directly, the Ford Customer Relationship Centre is just a phone call away. Call local rate 0845 841 1111.

Ford Rental – local service nationwide

Providing quality car and van rental from Ford's latest model range. For further information contact your local Ford Dealer.

Finance subject to status and conditions. Guarantees/Indemnities may be required. Written quotations available on request: Freepost Ford Credit. Correct at the time of going to print. Contact your Dealer for terms and conditions. Business Partner Contract Hire is provided by Lex Vehicle Leasing. Ford Insure is underwritten by Norwich Union Insurance Limited, registered in England no. 99122. Member of the General Insurance Standards Council. Authorised and Regulated by the Financial Services Authority. Registered office at 8 Surrey Street, Norwich NR1 3NG. For our joint protection, calls may be recorded or monitored. *Please refer to Payment Protection policy booklet for full details of the benefits and exclusions. ** Ford Insure Guaranteed Asset Protection is underwritten by Mapfre Asistencia Agency Ireland, Registered address 22/26 Prospect Hill, Galway, Ireland. ***Excesses apply. Please refer to Summary of Cover for details. Maximum 5 vehicles. Not available in conjunction with any other promotion.



Features and colours

The Ford**Mondeo** is fully equipped for your driving enjoyment. Indeed, nothing demonstrates our commitment to your pleasure more than the Mondeo's premium quality craftsmanship and superbly specified features. Everything you and your passengers need falls naturally and effortlessly to hand; advanced technology blending with user-friendly ergonomics to bring you features that not only look fantastic, but are easy to operate and work beautifully too. From the latest in great-sounding audio systems to a choice of distinctive alloy wheels, each element is designed without compromise to enhance your enjoyment and provide the ultimate ownership experience.

Standard and optional wheels

LX 16" 7-spoke wheelcover	Zetec 16" 7-spoke alloy wheel	Zetec S 18" 5-spoke polished alloy wheel	Ghia 16" 6-spoke alloy wheel	Ghia X 17" 7-spoke alloy wheel with polished centre cap
ST220, ST TDCi 18" 16-spoke alloy wheel	18" 10-spoke alloy wheel (optional on Zetec S, Ghia X)	17" 5-spoke alloy wheel (optional on Zetec and Zetec Nav)		

Wheel availability

	LX	Zetec / Zetec Nav	Zetec S	Ghia	Ghia X	ST TDCi	ST220
6½x16" steel with 7-spoke wheelcovers and 205/55 Rx16 tyres	●						
6½x16" 7-spoke alloy with 205/55 Rx16 tyres		●					
6½x16" 6-spoke alloy with 205/55 Rx16 tyres				●			
6½x17" 7-spoke polished alloy with polished centre cap and 205/50 Rx17 tyres					●		
6½x17" 5-spoke alloy with 205/50 Rx17 tyres		○					
7x18" 5-spoke alloy with 225/40 Rx18 tyres and locking wheel nuts			●			○	
7x18" 10-spoke alloy with 225/40 Rx18 tyres and locking wheel nuts			○		○		
7x18" 16-spoke alloy with 225/40 Rx18 tyres and locking wheel nuts						●	●
16" steel spare (in lieu of mini-spare)	○	○	○	○	○	○	○

All vehicles come with a mini steel spare and can be upgraded to a 16" steel spare (optional at extra cost).
Note If the spare wheel rim or tyre size differs from the other wheels fitted: DO NOT drive in excess of 50 mph. DO drive the least possible distance.
● = Standard, ○ = Optional, at extra cost.



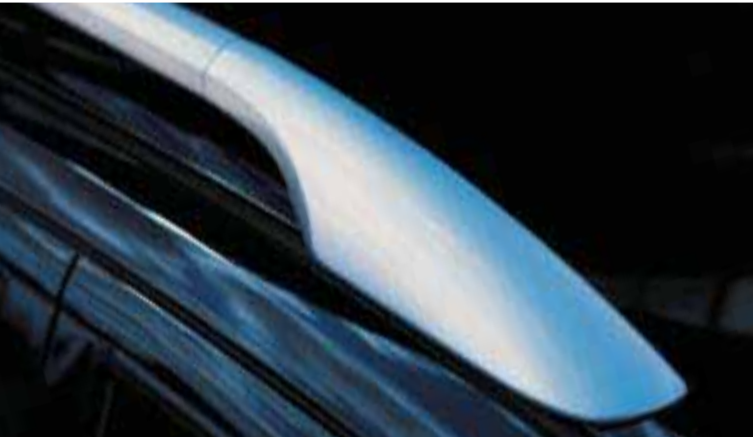
Xenon headlights Stylish and efficient xenon headlights provide outstanding illumination. Available as a single option or as part of the Technology Pack.*



Park Assist sensors located in the rear bumper help you to judge tight parking situations.*



Door mirrors Larger door mirrors on all models enhance rearward visibility, while integral puddle lights and power-fold action bring added convenience to selected models.



Roof rails Stylish and practical estate roof rails are now finished in polished aluminium (optional on ST220) or silver painted (optional on Zetec, Zetec S, Ghia and Ghia X).



Roof transportation system Lockable roof crossbars enhance the Mondeo's versatile load-carrying ability. Attachments are also offered for snow skis, snowboards, surfboards, bicycles, and ski or roof boxes.



Dog guard A robust dog guard/load compartment partition separates the luggage area from the passenger compartment.

Exterior features

	LX	Zetec / Zetec Nav	Zetec S	Ghia	Ghia X	ST TDCi	ST220
Styling							
Bodyside mouldings – Black	●						
Bodyside mouldings – Body colour		●	●	●	●		
Bumpers – Body colour	●	●	●				
Bumpers – Body colour with chrome strip				●	●		
Bumpers – Unique design, body colour						●	●
Door handles – Black	●						
Door handles – Body colour		●	●			●	●
Door handles – Body colour with chrome strip				●	●		
Exhaust – Single pipe in chrome						●	
Exhaust – Twin pipes in brushed aluminium							●
Paint – Metallic (excluding Performance Blue)	○	○	○	○	○	●	●
Radiator grille – Painted in slate metallic	●	●	●	●	●		
Radiator grille – Unique mesh upper and lower grille and body colour surround						●	●
Radiator grille – Chrome surround	●	●		●	●		
Spoiler – Rear, tailgate-mounted (not available on estate)		○	○			●	●
Tailgate/boot lift handle – Body colour	●	●				●	●
Tailgate/boot lift handle – Body colour with chrome strip			●	●	●		
Chrome finish on upper doorline (4-door and 5-door only)				●	●		
Functional							
Door mirrors – Electrically-operated and heated, black housing and body-coloured scull cap	●	●	●				
Door mirrors – Electrically-operated and heated, fold back, black housing and body-coloured scull cap			○			●	
Door mirrors – Electrically-operated and heated, fold back with puddle lights, black housing and body-coloured scull cap				●	●		●
Heated front windscreen – ‘Quickclear’	●	●	●	●	●	●	●
Heated rear window	●	●	●	●	●	●	●
Electronic tailgate release	●	●	●	●	●	●	●
Glass – Tinted	●	●	●	●	●	●	●
Glass – Privacy, light transmission 55% (all bodystyles)	○, □	○, □	○, □	○, □	○, □	○, □	○, □
Park Assist – Rear sensors	○, □	○, □	○, □	○	○	○	○
Roof rails – Integral (estate only)	●	●	●	●	●	●	●
Roof rails – Silver-painted finish (estate only)		○	○	○	○	○	
Roof rails – Aluminium finish (estate only)							○
Wipers – Front, variable interval intermittent wipe with drip wipe	●	●	●				
Wipers – Front, automatic wipe with rain sensor	□	□	□	●	●	●	●
Wipers – Tailgate wiper with electric wash and auto reverse wipe (5-door only)	●	●	●	●	●	●	●
Wipers – Tailgate wiper, intermittent with electric wash and auto reverse wipe (estate only)	●	●	●	●	●	●	●
Tow bar – Detachable (4-door and 5-door only on Zetec S)	○	○	○	○	○		
Lights							
Halogen, polycarbonate stone impact resistant headlights, side lights, rear fog lights, reversing lights, high-mounted rear brake light	●	●	●	●	●	●	●
Headlights – Automatic	□	□	□	●	●	●	●
Fog lights – Front	□	●	●	●	●	●	●
High-intensity discharge (HID) xenon headlights (includes automatic headlight levelling)	□	○, □	○, □	○, □	○, □	○, □	○, □
Puddle lights				●	●		●
White fender side repeat flasher	●	●	●	●	●	●	●

● = Standard, ○ = Optional, at extra cost, □ = Part of an option package, at extra cost.



Rear seat audio system Features independent audio controls for the rear seat passengers, plus two headphone sockets. Requires Sony audio system or DVD navigation system with touch-screen.

Multimedia system The DVD multimedia system allows rear passengers to watch movies, or, if auxiliary leads are purchased separately, to play computer games. Includes infrared remote control and two plug-in headphones sets.*



High Line DVD navigation system This sophisticated system includes a large, easy-to-read colour display with touch-screen function, Traffic Message Channel (TMC) and MP3 playback capability. Just pick your destination and go.

Low Line CD navigation system The Low Line CD navigation system features a radio, single-CD audio player and up-to-the-minute route information including Traffic Message Channel via an LCD display and voice guidance system.

High-performance Sony audio system incorporates a six-disc autochanger that can play back your own compilations on CD-R/RW discs.

Audio and communication systems

	LX	Zetec / Zetec Nav	Zetec S	Ghia	Ghia X	ST TDCi	ST220
Stereo radio/CD – 6000C RDS EON, with removable control panel, 'Keycode' anti-theft coding, 4 speakers and remote control stalk	a	a / n/a	a				
Sony stereo radio/CD MP3 capability, 'Keycode' anti-theft coding, DSP, 4 dual-cone speakers and remote control stalk	b	b / n/a	b				
Sony stereo radio 6-disc in-dash CD autochanger, DSP, 'Keycode' anti-theft coding, 4 dual-cone speakers and remote control stalk	b	b / n/a	b	a	a	a	a
Low Line CD navigation system – Bosch Blaupunkt TravelPilot EX, 4" monochrome display and Traffic Message Channel (TMC)	b	b / a	b	b	b	b	b
High Line DVD navigation system – 7" touch-screen colour display, Traffic Message Channel (TMC), MP3 capability, 4 speakers (includes Sony single slot) (includes EATC on LX)	b	b / n/a	b	b	b	b	b
Rear seat audio system – Headphone socket with independent volume and audio controls (only available with Sony audio systems or DVD navigation system)		b / n/a	b	b	b	b	b
Multimedia DVD system – Two mounted screens in head restraints, with infra red remote control and two headphone sets (requires auxiliary leads to be purchased separately to play computer games)		b / n/a	b	b	b	b	
Mobile phone hands-free pre-equipment pack	b	b	b	b	b	b	b

a = Standard, b = Optional, at extra cost.

Interior features

	LX	Zetec / Zetec Nav	Zetec S	Ghia	Ghia X	ST TDCi	ST220
Comfort and convenience							
Accessory socket	●	●	●	●	●	●	●
Air conditioning – CFC-free	●						
Air conditioning – CFC-free, with Electronic Automatic Temperature Control (EATC)		●	●	●	●	●	●
Centre console – Storage box, cup holder and armrest	●	●	●	●	●	●	●
Cigar lighter	○	○	○	○	○	○	○
Clock – Analogue	●	●	●	●	●	●	●
Clock background – Black	●	●					
Clock background – Satin aluminium			●			●	●
Clock background – Crème				●	●		
Footrest – Driver's	●	●	●	●	●	●	●
Grab handles – Four, coat hooks on rear	●	●	●	●	●	●	●
Mirror – Dipping rear-view	●	●	●				
Mirror – Auto-dimming rear-view	□	□	□	●	●	●	●
Storage – Facia, driver's lower	●	●	●	●	●	●	●
Sunroof – Electrically-operated tilt/slide screened glass and 'bounce-back' sensor	○	○	○	○	○	○	○
Sunvisors – Two with mirrors	●						
Sunvisors – Two, illuminated with mirrors		●	●	●	●	●	●
Windows – Front, electrically-operated with one-shot lowering/closing and 'bounce-back' sensor	●	●	●	●	●	●	●
Windows – Rear, electrically-operated with global closing	○	● / n/a	●	●	●	●	●
Seats and seat belts							
Front seat – Driver's electric height adjust and lumbar support	●	●	●	●		●	
Front seat – Passenger's manual lumbar support		●	●				
Front seat – Passenger's electric height adjust and manual lumbar support (standard on Zetec S V6 only)			○	●		●	
Front seat – Driver's 8-way power with electric height adjust and manual lumbar support				○			
Front seats – Driver's and passenger's 8-way power with electric height adjust and electric lumbar support					●	○	●
Front seats – Fully reclining, anti-submarining with adjustable head restraints	●	●	●	●	●	●	●
Front seats – Heated, with variable control	○	○	○	○		●	●
Front seats – Variable climate control					●		
Front seats – Recaro						○	●
Rear seat – 70:30 split back	●	●	●	●	●	●	●
Rear seats – Three head restraints, height-adjustable	●	●	●	●	●	●	●
Rear seats – Heated, with variable control (not in combination with low rear seat entertainment or child booster cushion pack)		○	○	○	○	○	○
Rear seats – Folding centre armrest		●	●				
Rear seats – Folding centre armrest with stowage compartment/cup holders				●	●	●	●
Seats – Partial leather-trimmed (standard on V6 Zetec S and ST TDCi. Only available with driver's and passenger's electric seat height adjust)			○			●	
Seats – Alcantara/leather-trimmed					●+		
Seats – Leather-trimmed (centre rear seat and armrest vinyl-trimmed)					●	○	●
Seats – Child booster cushion pack (not available with variable heated rear seats or partial leather trim)*	○	○	○	○	○	○	○
Storage pockets – Front seat backs		●	●	●	●	●	●
Seat belts – Front, inertia reel, with grabbers, pre-tensioners and height-adjustable mounts. Rear, three inertia reel, lap and diagonal (Camel colour with camel interior on Ghia and Ghia X)	●	●	●	●	●	●	●
Seat belt reminder system – Driver's seat	●	●	●	●	●	●	●
Carpet and trim							
Carpet – Cut pile	●	●	●	●	●	●	●
Carpet – Non-slip front and rear mats				●	●		●
Clock and gearshift bezel – Asphalt	●						
Clock and gearshift bezel – Medium tonal brushed		●					
Clock and gearshift bezel – Light tonal brushed			●			●	●
Clock and gearshift bezel – Mocca foil				●	●		
Front door trim spears – Light tonal brushed			●			●	●
Front door trim spears – Mocca foil				●	●		
Door pull handle, armrests and door bins	●	●	●	●	●	●	●
Silver metallic-finish instrument cluster rings	●	●	●	●	●	●	●
Gear knob – Satin aluminum insert	●						
Gear knob – Aluminium						●	
Gear knob – Leather, with black insert (manual transmissions only)		●	●	●	●		●

42 **Note** Some features are optional at extra cost. Please refer to specification tables on pages 41-45 for details of availability.
*Available only at time of new vehicle purchase.
**It is an offence for drivers to use a hand-held mobile phone or similar device whilst driving.



Accessories Make your new Ford Mondeo as individual as you choose, with genuine Ford accessories. For more details, pick up a copy of the Ford Mondeo accessory brochure from your local Ford Dealer.



Integrated child booster cushion provides safe and comfortable seating for youngsters aged between three and twelve years. (Optional, at extra cost.)*



New variable climate-controlled front seats with five levels of heating and ventilation, provide pleasant temperatures all-year round, because your comfort is our priority. (Standard on Ghia X.)



Flat load compartment New, fold-flat rear seats help to enhance the Ford Mondeo estate’s flexible load-carrying ability.



Alcantara seat trim Luxurious new Alcantara seat trim adds to the Ford Mondeo’s comfortable interior (available as a no cost option on Ghia X).



The folding rear seat centre armrest makes journeys more comfortable and incorporates a useful storage compartment.

Interior features

	LX	Zetec / Zetec Nav	Zetec S	Ghia	Ghia X	ST TDCi	ST220
Gear knob – Real wood (Durashift 5-tronic transmission only)					●		
Scuff plates – Stainless steel, front doors only				●	●	●	
Scuff plates – Unique design, front doors only						●	●
Instruments and controls							
Instruments – Speedometer, odometer, trip recorder, tachometer, fuel gauge, water temperature gauge, external temperature indicator	●	●	●	●	●	●	●
Multifunction trip computer	●	●	●	●	●	●	●
Warning indicators for low fuel, oil pressure, direction indicators, driver's BeltMinder™, glow plugs on (diesel only), high beam, ignition/alternator, brake failure, handbrake on, airbags, low washer, 'lights on' and door open audible warnings	●	●	●	●	●	●	●
Illuminated heater controls – 4-speed fan. Four MicronAir filtered vents with temperature and direction control, two dedicated side window demists	●	●	●	●	●	●	●
Master lighting control – Facia-mounted with headlight levelling control	●	●	●	●	●	●	●
Control stalks – Column-mounted for indicators, main beam, dip and flash, wash/wipe functions	●	●	●	●	●	●	●
Cruise control	●	●	●	●	●	●	●
Steering column – Reach and rake adjustable	●	●	●	●	●	●	●
Steering wheel – Leather-trimmed		● / n/a	●	●		●	●
Steering wheel – Half wood/leather steering wheel					●		
Steering wheel – Metal-finished spokes, incorporating horn function	●	●	●	●	●	●	●
Lighting							
Courtesy lights – Header-mounted, front and rear door-operated with delayed switch-off	●	●	●	●	●	●	●
Courtesy lights – Front reading and footwell lights				●	●		●
Courtesy lights – Rear				●	●		●
Light – Luggage compartment	●	●	●	●	●	●	●
Luggage compartment							
Carpet – Floor with sidewall trims	●	●	●	●	●	●	●
Load floor tie-down rings – Chrome (estate only)	●	●	●	●	●	●	●
Package tray – Tilting, removable (5-door only)	●	●	●	●	●	●	●
Tonneau cover with grab handle (estate only)	●	●	●	●	●	●	●
12V power socket (estate only)	○	○	○	○	○	○	○
Dog guard (estate only)	○	○	○	○	○	○	○

*Please check seat size against child age before use. ● = Standard, ○ = Optional, at extra cost, □ = Part of an option package, at extra cost, ●+ = No cost option.

Option packs

	LX	Zetec / Zetec Nav	Zetec S	Ghia	Ghia X	ST TDCi	ST220
Technology Pack – Xenon headlights with automatic headlight levelling and privacy glass (includes front fog lights on LX)	○	○	○	○	○	○	○
Convenience Pack – Automatic windscreen wipe with rain sensor, automatic headlights, Park Assist rear sensors and auto-dimming rear-view mirror (includes front fog lights on LX)	○	○	○				
Family Pack – Dog guard, rear seat audio system and integrated child booster cushion (not available with variable heated seats or partial leather trim)		○	○	○	○		
Zetec Luxury Pack – Partial leather sports seats, Park Assist, Sony 6006 CD/radio with 6-disc in-dash autochanger		○ / n/a					

○ = Optional, at extra cost.

Trim colours

Majestic Ebony seat facing Twill Ebony seat sides	Tria Ebony seat facing Twill Ebony seat sides	Tria Camel seat facing Twill Camel seat sides	Tria Ebony seat facing Leather Ebony seat sides
Aras Ebony seat facing Lux Ebony seat sides	Aras Camel seat facing Lux Camel seat sides	Leather Ebony seat sides and perforated seat facing	Leather Camel seat sides and perforated seat facing
Alcantara Ebony seat facing Leather Ebony seat sides	Alcantara Camel seat facing Leather Camel seat sides	Recaro Leather Ebony seat sides and perforated seat facing	Recaro Leather Light Flint seat sides and perforated seat facing
Recaro Leather Infra Red seat sides and perforated seat facing			

Body colours

Colorado Red Solid body colour	Diamond White Solid body colour	Deep Rosso Red* Metallic body colour	Honour Green* Metallic body colour	Ink Blue* Metallic body colour
Machine Silver* Metallic body colour	Magnum Grey* Metallic body colour	Octane Blue* Metallic body colour	Panther Black* Metallic body colour	Platinum* Metallic body colour
Stardust Silver* Metallic body colour	Tonic* Metallic body colour	Performance Blue* (ST 220 and ST TDCi only) Metallic body colour		

Trim and body colour availability

Model	LX	Zetec/ Zetec Nav	Zetec S		Ghia	Ghia X		ST TDCi		ST220
Trim	Majestic	Tria	Tria	Tria/Partial leather**	Aras	Leather	Alcantara Leather	Tria/Partial leather**	Leather***	Leather
Solid body colours										
Colorado Red	E	E	E	E	E/F	E	E			
Diamond White	E	E	E	E	E/F	E	E			
Metallic body colours*										
Deep Rosso Red	E	E/C	E	E	E/C	E/C	E/C			
Honour Green	E	E/C	E	E	E/C	E/C	E/C			
Ink Blue	E	E/C	E	E	E/C	E/C	E/C	E	E	E/F/I
Machine Silver	E	E/C	E	E	E/C	E/C	E/C	E	E	E/F/I
Magnum Grey	E	E/C	E	E	E/C	E/C	E/C	E	E	E/F/I
Octane Blue	E	E/C	E	E	E/C	E/C	E/C			
Panther Black	E	E/C	E	E	E/C	E/C	E/C	E	E	E/F/I
Performance Blue								E	E	E/F
Platinum	E	E/C	E	E	E/C	E/C	E/C			
Stardust Silver	E	E/C	E	E	E	E	E	E	E	E/F/I
Tonic	E	E/C	E	E	E/C	E/C	E/C			

Seat trim colour key: E – Ebony Black, I – Infra Red, C – Camel, F – Light Flint, / – Choice of colour. *Metallic paint is an option at extra cost (Panther Black, Stardust Silver, Ink Blue, Machine Silver and Magnum Grey are standard on ST TDCi and ST 220). **Partial leather trim is an option at extra cost on Zetec S (except V6 models). It is standard on ST TDCi. ***Full leather trim is an option at extra cost on ST TDCi in combination with Recaro seats.