

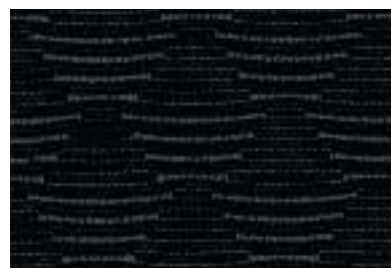
Ink Blue Tria in Ebony seat facing



Twill in Ebony seat sides



Integrate in Infinity Blue seat facing



Twill in Infinity Blue seat sides



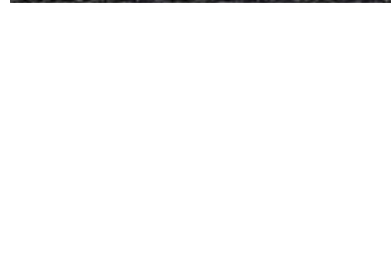
Arasia in Infinity Blue seat facing



Lux in Infinity Blue seat sides



Napoli perforated leather in Infinity Blue seat facing\*



Napoli leather in Infinity Blue seat sides



\*Leather trim is an option at extra cost

Integrate in Generic Orange seat facing

Twill in Ebony seat sides

Arasia in Ebony seat facing

Lux in Ebony seat sides

Napoli perforated leather in Charcoal seat facing\*

Napoli leather in Ebony seat sides

MY 2007.5 GBR en



**Allergy-tested interiors**

All the materials used in the manufacture of the interior of the Ford Galaxy meet the strict requirements of the TÜV TOXPROOF Criteria Catalogue for Vehicle Interiors by the TÜV Produkt und Umwelt GmbH and are designed to minimise the risk of allergic reactions.

With doors and windows closed, the interior materials selected – together with the integrated pollen filter – protect the passengers against most allergising particles from the outdoor air. At higher temperatures, the additional use of air conditioning is recommended.

**Note** The Bluetooth® word mark and logos are owned by the Bluetooth SIG, Inc. and any use of such marks by Ford Motor Company Limited and its associated companies is under licence. Other trademarks and trade names are those of their respective owners.

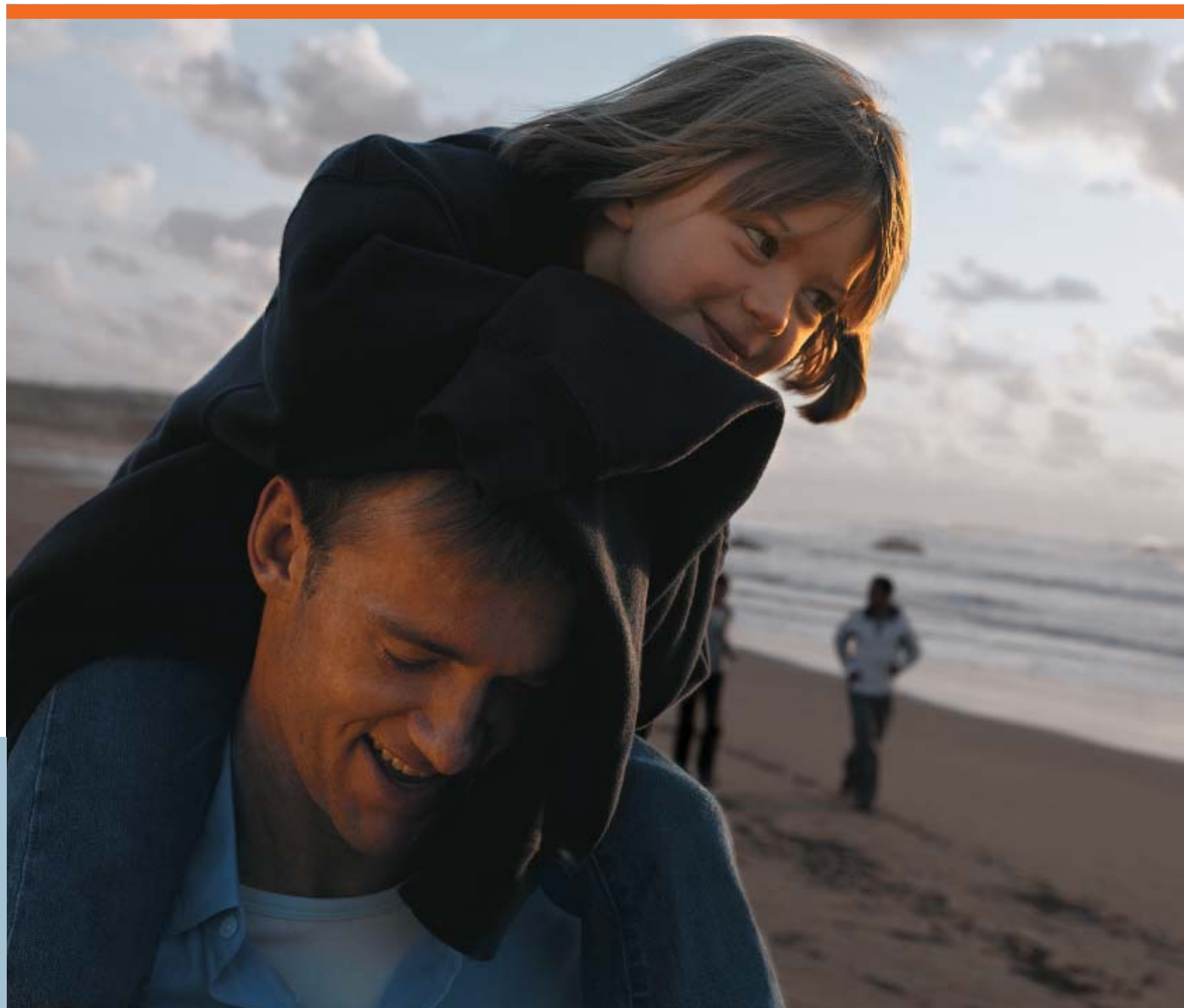
K48

**Note** Page 2, Adelphi Hotel Melbourne, © photo Herbert Yrma, from his book Hip Hotels: City, Thames & Hudson Ltd, London.



Published by Ford Motor Company Limited, Brentwood, Essex, England. Registered in England No. 235446. FA 1505/2. BJN 302310. FoE H30E. PN 778501/0307/48m/GBR en March 2007 © Ford Motor Company Limited.

[www.ford.co.uk](http://www.ford.co.uk)  
08457 111 888\*



FordGalaxy

Feel the difference



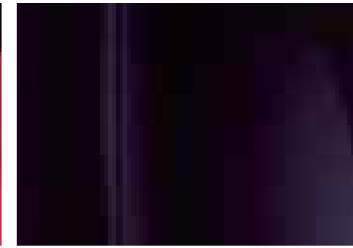




Colorado Red  
Solid body colour



Deep Navy  
Solid body colour



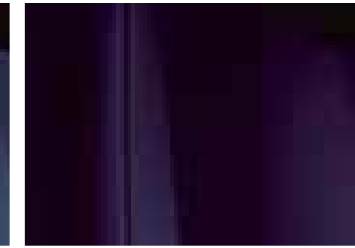
Frozen White  
Solid body colour



Blue Ambition\*  
Metallic body colour



Ink Blue\*  
Metallic body colour



Kelp\*  
Metallic body colour



Machine Silver\*  
Metallic body colour



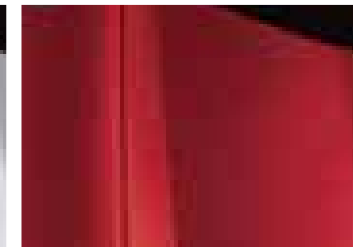
Panther Black\*  
Metallic body colour



Sea Grey\*  
Metallic body colour



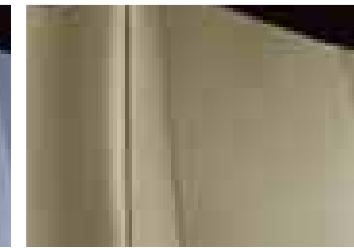
Stardust Silver\*  
Metallic body colour



Tango\*  
Metallic body colour



Tonic\*  
Metallic body colour



White Grape\*  
Metallic body colour

### Colour and trim

Model	LX	Zetec	Ghia						
<b>Seat facing trim and colour</b>	Ink Blue Tria in Ebony	Integrate in Generic Orange	Napoli perforated leather in Charcoal*	Integrate in Infinity Blue	Napoli perforated leather in Infinity Blue	Arasia in Ebony	Napoli perforated leather in Charcoal*	Arasia in Infinity Blue	Napoli perforated leather in Infinity Blue
<b>Seat bolster trim and colour</b>	Twill in Ebony	Twill in Ebony	Napoli in Ebony	Twill in Infinity Blue	Napoli in Infinity Blue	Lux in Ebony	Napoli in Ebony	Lux in Infinity Blue	Napoli in Infinity Blue
<b>Door trim insert and colour</b>	Gecko in Infinity Blue	Gecko in Anthracite	Pieno in Ebony	Gecko in Infinity Blue	Pieno in Infinity Blue	Pieno in Ebony	Pieno in Ebony	Pieno in Infinity Blue	Pieno in Infinity Blue
<b>IP colour: Upper / Lower</b>	Ebony / Ebony	Ebony / Ebony	Ebony / Ebony	Infinity Blue / Pewter	Infinity Blue / Pewter	Ebony / Ebony	Ebony / Ebony	Infinity Blue / Pewter	Infinity Blue / Pewter
<b>Solid body colours</b>									
Colorado Red	●	●	○	-	-	●	○/□	-	-
Deep Navy	●	●	○	●	○	●	○/□	●	○
Frozen White	●	●	○	●	○	●	○/□	●	○
<b>Metallic body colours*</b>									
Blue Ambition	●	●	○	●	○	●	○/□	●	○
Ink Blue	●	●	○	●	○	●	○/□	●	○
Kelp	●	●	○	●	○	●	○/□	●	○
Machine Silver	●	●	○	●	○	●	○/□	●	○
Panther Black	●	●	○	●	○	●	○/□	●	○
Sea Grey	●	●	○	●	○	●	○/□	●	○
Stardust Silver	●	●	○	●	○	●	○/□	●	○
Tango	●	●	○	-	-	●	○/□	-	-
Tonic	●	●	○	●	○	●	○/□	●	○
White Grape	●	●	○	●	○	●	○/□	●	○

● = Standard, ○ = Option, at extra cost, □ = Part of option pack, at extra cost. \*Metallic paint and full leather trim are optional, at extra cost. Please note that when Ghia X Pack is ordered the trim specified is Napoli perforated leather in Charcoal

The Ford Galaxy is covered by the Ford Perforation Warranty for 12 years from the date of first registration. Subject to terms and conditions.

\*Metallic body colours are options at extra cost.

**Note** The car images used are to illustrate body colours only and may not reflect current specification. Colours and trims reproduced within this brochure may vary from the actual colours, due to the limitations of the printing processes used.

## Space exploration

We all like our own space. But there are times when we want to share it. Or perhaps explore ways of making it more comfortable. And there are times when we simply want to make the most of it.

Take this swimming pool, for example. Once an unused rooftop of an upmarket Melbourne hotel. Now, a place to relax and unwind, away from the city below. It's all about stretching the imagination.

In the all new Ford Galaxy, we've brought all this thinking together. We've made it larger and created more luxurious interior space. We've added the very latest innovative technology, and clever design and stowage solutions. So you and your family and friends can travel first class.

**Note** Some images portrayed are of a pre-production model and/or are computer generated, therefore, the design/features on the final version of the vehicle may differ in various respects. In addition, some of the features shown on the vehicles may be optional.



# Open space

The space to live. The freedom to move. Practicality and beauty effortlessly merged. Ford Galaxy's sleek new styling is a visual expression of its car-like handling and our new design language. We call it energy in motion.





# Commanding space

Your space. Your driving experience. The new Ford Galaxy puts you in touch with the space around you, while its high driving position gives you a commanding view of what's ahead.



### Centre overhead console

With centre overhead stowage you can even make use of the space above you. (Short console on LX; medium console on Zetec and full-length console on Ghia)



### Facia-top stowage

Convenient compartment complete with lid in the centre of the instrument panel is ideal for keeping small items close at hand.



### Ford Convers+

This advanced instrumentation provides an exceptional interface between car and driver, with high-quality, easy-to-read graphics and the availability of voice control of audio, satellite navigation\*, phone and climate control (DEATC\*) functions. (Option)

\*where specified



### Underseat stowage

Valuable items can be tucked away out of sight, thanks to the innovative stowage beneath the driver's and front passenger's seat. Standard on Ghia; option on LX and Zetec. Please note that this feature is not available with CD/DVD navigation or MultiMedia DVD system.





# Innovative space

Seven full-sized seats and room left over for your luggage. Whether you have a big family, big luggage or just a big passion for space, the all new Ford Galaxy gives every trip a fresh dimension – even with the seven full-sized seats in use.



## Leather seat trim

Premium quality leather seat trim (option). Driver and front passenger's 8-way power adjustable seats are now available together as an option, or as part of the Technology Seat Pack (option) - featuring a memory function for driver's seat and door mirrors with four programmable settings and automatic dipping of the door mirrors whilst reversing.



## Ford Fold Flat System (FFS)

For the ultimate in flexible space, each individual rear seat can fold flat without the need for it to be removed – and tabs with magnetic fixings cover the gap between the second and third row of seats, making the load area even easier to use. You can choose from any of 32 different seating combinations to suit your passengers and luggage.



## Individual sliding seats

Each seat features fore and aft adjustment, plus an adjustable backrest for enhanced comfort and luxurious personal space.





# Personal space

Travel where you want and how you want.  
But never give up your home comforts.

## MultiMedia DVD system (image on right)

Ford Galaxy's in-car entertainment features a built-in DVD player with two independently-operated screens and wireless headphones. So even your more demanding passengers can enjoy their own personal space with movies and computer games. (Option)

## DVD navigation system (image on right)

This advanced system features a 7" touchscreen and colour display for ease of use – plus MP3 capability, 10 premium speakers and an external 6-disc CD autochanger for your listening pleasure. (Option)

## CD navigation system

Features 4" monochrome display, stereo radio/CD/MP3 and allows CD audio listening once your route has been calculated. (Option)

## Sony 6CD audio system

With its 6-disc in-dash CD autochanger, the Sony 6CD audio system delivers hours of unbroken, crystal-clear sound. (Option)

## Bluetooth® Hands-Free with Voice Control

Bluetooth® wireless technology enables you to make hands-free calls, while the Voice Control technology lets you control your Bluetooth® compatible mobile phone, audio, DVD navigation\* and climate control (DEATC\*) systems with the sound of your voice. (Option)

\* where specified





## Freedom of space

With ample head and leg room in all three rows of the adjustable seating, even the longest journeys will see you and your passengers arrive relaxed and refreshed.







## Dynamic space

Smooth and graceful, yet dynamic and responsive. The Ford Galaxy offers a choice of powerful engines that bring every inch of its space to life.



### **Interactive Vehicle Dynamic Control (IVDC) with continuously controlled damping**

Ford Galaxy's new Interactive Vehicle Dynamic Control (IVDC) with Continuously Controlled Damping (CCD) delivers notable improvements to handling, stability and braking performance. Each damper is adjusted five times per second to guarantee the best possible interaction between occupant comfort and road contact. You can also select the suspension setting of your choice, switching between sport, normal and comfort mode as the mood takes you. (Option)



### **6-speed Durashift automatic transmission**

This advanced automatic transmission includes a 'Sportsmode', allowing gears to be manually selected for a more involved driving experience.







# Protective space

We want you to feel secure in your space. So we've introduced the world-class Ford Intelligent Protection System (IPS) to make sure you're protected wherever you choose to venture.



### Intelligent Protection System

Should there be any unwelcome surprises, Ford Galaxy's Intelligent Protection System (IPS) is ready to respond in an instant. A comprehensive airbag system includes driver's and front passenger's airbags\*, side airbags, full length (first, second and third row) curtain airbags and an innovative driver's knee bolster airbag.

Three-point seat belt pre-tensioners work in harmony with the airbag system, while a steel safety cage, side impact door beams and collapsible steering column and pedals deliver the ultimate protection in the event of

an impact. For your little travellers, Ford Galaxy comes with ISOFIX child seat attachments. These are located on the two outer seats of the second row.

The new Ford Galaxy builds on Ford's established reputation for safety and security, recording a maximum '5-star' Adult Occupant Rating in Euro NCAP crash tests.

**\*Note:** A child seat should never be placed in the front passenger seat when the Ford vehicle is equipped with an operational front passenger's airbag. The safest place for children is properly restrained on the second row seats.

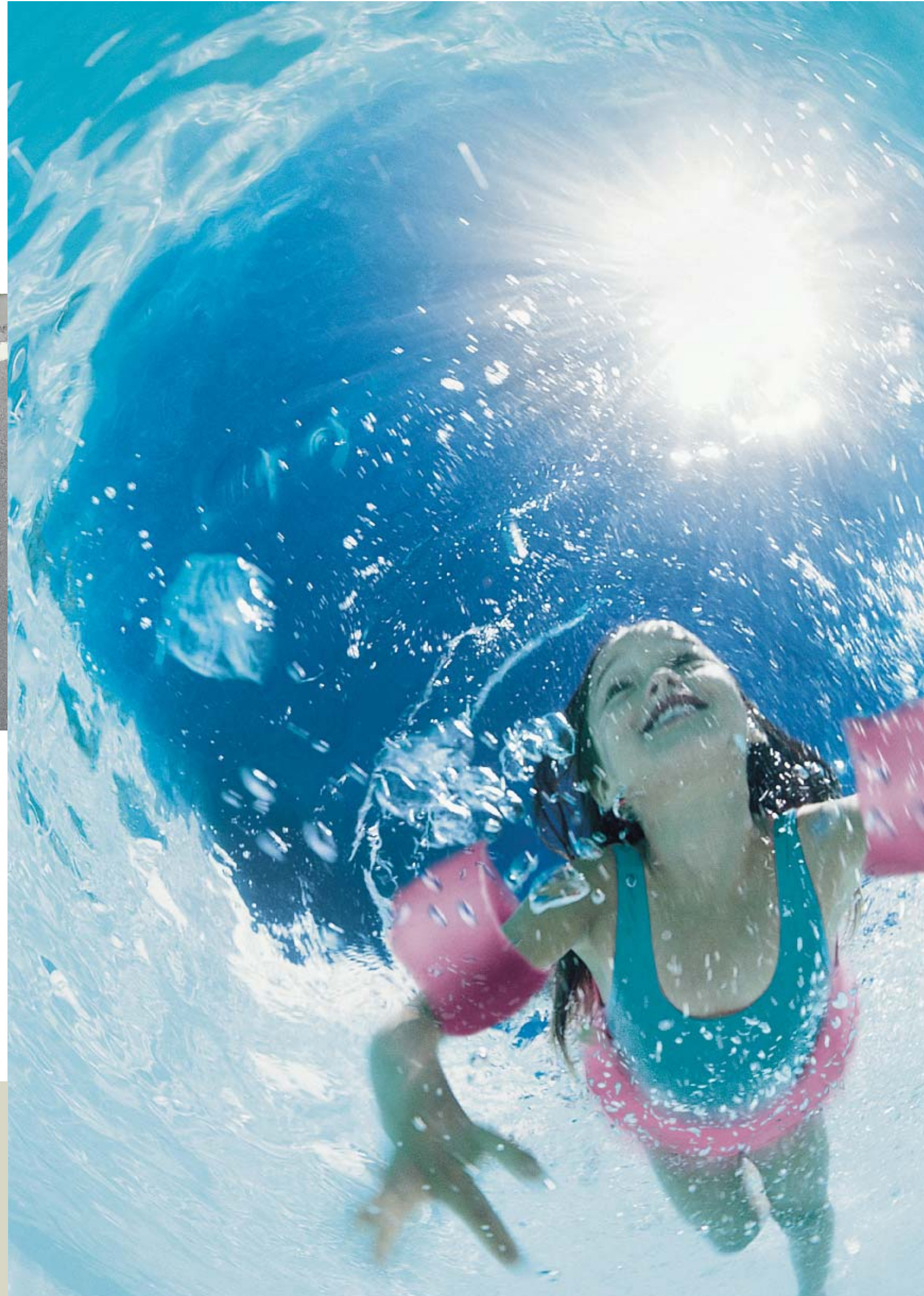
### Driver's knee airbag

The driver's knee bolster airbag helps prevent injuries through contact with the steering column.



### Adaptive Cruise Control (ACC) with Forward Alert (FA)

Adaptive Cruise Control (ACC) lets you set the pace - and automatically decelerates to keep your chosen distance if the vehicle ahead of you is travelling slower than your set speed. Forward Alert (FA) offers an audible and visual warning when there's a risk of colliding with the vehicle in front. At the same time, Emergency Brake Assist (EBA) prepares the brakes to facilitate full braking performance by increasing pressure within the brake system. (Option)





# Choose your model

It's your space, so you decide how you want things to be. Whether it's the luxurious Ghia, sporty Zetec or stylish LX, there's a Ford Galaxy to suit you and your lifestyle.



## Ghia

### Key features include:

- 16" multi-spoke alloy wheels
- Power-operated and heated door mirrors with side turn indicators and puddle lamps
- Sony CD audio system
- Automatic headlights
- Autowipers, with rain sensor
- Auto-dimming rear-view mirror
- Cruise control
- Leather-trimmed steering wheel, gear knob and handbrake grip
- Chrome-finish door handle inserts, upper doorline strip and bright-finish front scuff plates
- Front and rear carpet floor mats
- Full-length overhead console, including child observation mirror

For full details, please see specifications section at the back of the brochure.



### Climate front seats

Experience a higher level of comfort with individually-controlled climate front seats – keeping you as warm or cool as you want to be, at the touch of a button. (Option)







## Zetec

### Key features include:

- 16" alloy wheels
- Dual-zone Electronic Automatic Temperature Control (DEATC)
- Driver's power height adjustment with manual adjustable lumbar support
- Power-operated front and rear windows with global opening/closing
- 'Park Assist' - front and rear sensors
- Thatcham Category 1 Alarm
- Leather-trimmed steering wheel and gear knob
- Medium-length overhead console, including child observation mirror

For full details, please see specifications section at the back of the brochure.



## LX

### Key features include:

- 16" steel wheels with 7-spoke wheelcovers
- Air conditioning
- Power-operated and heated door mirrors
- Power-operated front windows
- Stereo CD/radio
- Steering wheel toggle controls
- Electronic Stability Programme (ESP)
- 'Quickclear' heated front windscreen
- Front fog lights
- Remote control central locking
- 7 individual seats with Ford FoldFlatSystem (FFS)
- Integrated C-channels for secure installation of roof transportation systems
- Privacy glass

For full details, please see specifications section at the back of the brochure.



### Dual-zone Electronic Automatic Temperature Control (DEATC)

Can be adjusted separately for the driver and front passenger, with up to 6°C variation from side to side. Standard on Ghia and Zetec; option on LX as part of the LX Driver's Pack.



### Underfloor storage

No stone unturned, no inch unused. Ford Galaxy's underfloor storage is perfect for keeping valuable items away from prying eyes.





## Recreational space

### Thule ski/snowboard carrier

Elegant, fully-lockable ski carrier suitable for up to six pairs of skis or four snowboards. Can be roof-mounted or used inside the vehicle in conjunction with the optional Activity Kit. (Accessory)

### Activity Kit

Using a series of aluminium bars and special attachments that can be fitted in the rear, this innovative kit allows items to be securely locked in place. From bikes and scuba gear to coolboxes and skis, the only limit is your imagination. (Option and accessory)

### Thule interior bike carrier

Up to three bike carriers can be fixed to the Activity Kit. (Accessory)

### Waeeco coolbox

High-performance 35-litre capacity box cools down to 30°C below the ambient temperature, to a minimum of 1°C. Integrated 230V AC connector. (Accessory)

**Note** The Bluetooth® word mark and logos are owned by the Bluetooth SIG, Inc. and any use of such marks by Ford Motor Company Limited and its associated companies is under licence. Other trademarks and trade names are those of their respective owners.



### Garmin Mobile Navigation

Simple and intuitive mobile GPS navigation system. A number of useful features, including MP3 compatibility and Bluetooth® hands-free function, are available. Please contact your local Dealer for more details. (Accessory)

### Thule roof box

Made by the most respected name in rooftop transportation. A range of different sized boxes designed to carry a wide variety of loads and protect them from weather and theft. (Accessory, available in various sizes)

### Ford Boutique picnic rucksack

Pack everything you need to dine al fresco. Comprising of several compartments, this durable rucksack has a lining designed to keep your food and drink cool. Comes with four hardwearing plastic glasses. (Accessory)



**The striking 17" 10-spoke alloy wheel**

Option, available from June 2007 as part of Ghia X Pack or with run-flat tyres.



18" Y-spoke alloy wheel. Available as an accessory.



17" 10-spoke alloy wheel. Option, available from June 2007 as part of Ghia X Pack or with run-flat tyres.

17" 9-spoke alloy wheel. Available as an accessory.



17" 5-spoke machined alloy wheel. Available as an option or accessory. Also available as an accessory in silver painted finish.

16" multi-spoke alloy wheel. Standard on Ghia.



16" 5-spoke alloy wheel. Standard on Zetec.

## Wheels

Each distinctive wheel enhances Ford Galaxy's sleek design.

17" 9-spoke wheelcover. Option, available with run-flat tyres.

16" 7-spoke wheelcover. Standard on LX.



**Standard** = Standard on your vehicle.

**Option** = Can be ordered only together with your new vehicle.

**Accessory** = Available from your Ford Dealer.



# Personalise

Your Ford Galaxy will soon become your individual space for family transport and leisure. Use the wide range of options and accessories to personalise your car.

## Roof rails

Stylish roof rails enhance your Ford Galaxy's appearance and versatility. (Option)

## Load protection net

This durable retention net keeps your items secure in the luggage compartment while you're on the move. Meets ECE-R17 safety requirements. (Option and accessory)

## Ford Boutique Samsonite suitcases

Set of three Samsonite suitcases for you and your family. (Accessory)



## Retractable tow bar

Ford Galaxy's sturdy tow bar is there when you need it, but can be tucked away out of sight for uncompromised styling and easier access to the loadspace.

Release it at the touch of a button, then retract it with a swift and easy action. (Option and accessory)

## Contoured mudflaps

Available as sets for front and rear, these practical, hard-wearing mudflaps protect the bodywork from stone chips, and help keep your Ford Galaxy clean by reducing road spray. (Accessory)

## Britax Römer child seat

Provides optimum all-round protection and comfort. Various child seats, also with ISOFIX, are available for all ages. Removable and washable cover. (Accessory)

## Premium velour carpet floor mats

Luxurious mats made to complement your chosen interior. Driver's mat is fixed to prevent slippage. (Accessory)

## Scuff plates with Galaxy script

Polished stainless steel scuff plates look great and protect your vehicle. (Accessory)

## Foldable storage box

Ford Galaxy is an extremely spacious vehicle - and you can increase its flexibility even further with this purpose-designed storage solution. (Accessory)







## To us, environmental care comes naturally

Care for the environment is one of Ford's oldest concerns. Long before it became fashionable or required by law, we were questioning established practices and searching for better, more efficient alternatives. Like so much of our philosophy, the concept of sustainability dates right back to our founder, Henry Ford, a man who could not abide unnecessary waste.

### Driving into the future

Lighter, quieter, and using less fuel with lower emissions, today's Ford engines create less impact on the environment than ever before. Our smooth, quiet and economical passenger car diesel engines comply with the strict Euro IV-emissions regulations while, at the same time, improve the overall performance. Indeed, our new Galaxy 2.0 Duratorq TDCi 140 PS diesel engine develops higher torque than its predecessor, while producing even less carbon dioxide (CO<sub>2</sub>) emissions.

### A natural approach to alternative fuel

Imagine a car that runs on renewable fuel derived from sugar beet, cereal or wood shavings. Impossible? Then think again. Ford has been successfully selling the Focus Flexi-Fuel in Europe since 2001. The 1.8-litre car, which can run on petrol, bioethanol, or a mixture of the two, offers a 70% reduction in carbon dioxide emissions compared to a petrol model, without any loss in performance. Because bioethanol fuel is plant-based, the CO<sub>2</sub> emitted at the tailpipe is broadly equal to the CO<sub>2</sub> absorbed while the plants were growing.

### Recycling for good

Legend has it that Henry Ford used timber from old packing cases to build floors for the Model T. Today, the average Ford vehicle includes more recycled material than ever. Across our European vehicle range, more than 300 parts are made from recycled non-metallic materials. This helps to safeguard raw materials and diverts unwanted waste from landfill sites. Combined, our use of parts manufactured from recycled and renewable materials kept almost 35,000 tonnes\* of waste out of landfills.

\*2004 figures.



www.pefc.org

### A breath of fresh air

In our bid to provide the healthiest car interiors possible, the Ford Focus and Focus C-MAX, along with the new Ford S-MAX and Galaxy, were the first cars worldwide to receive the 'Allergy-Tested Interior' seal of approval from the TÜV; the German independent testing and assessment organization. Not only that, but the certification has also been confirmed by the British Allergy Foundation. By combining materials that are free from harmful emissions, together with pollen and dust filters, the interiors provide the perfect allergy-free environment for sufferers of asthma, hay fever or contact allergies, such as eczema.

### When less means more

What impact does a new vehicle have on air quality over its lifetime? How much noise will it produce when it drives down the street? Using a new tool called the Product Sustainability Index, Ford is taking a leading role by addressing the environmental, social and economic impact of its vehicles from the early stages of their development. As one of the key issues facing society in the 21st century, sustainable development presents an enormous global challenge and reinforces our message that 'business as usual' is not an option.

## Finance and services

A dedicated network of Ford Dealers is equipped and trained to meet the needs of today's drivers. Because of our coveted reputation for quality and reliability, from the moment your new vehicle leaves the showroom, you are assured of lasting, attentive service in many ways. Ford not only cares through Dealers, we also offer a variety of finance and leasing schemes to suit the needs of both the private and business customer. With a wide choice of plans and services, Ford is committed to delivering complete motoring confidence and total peace of mind.

### FordCredit

As part of Ford Motor Company Limited, Ford Credit offers convenient and competitive financial services to Ford customers. Choose, try, finance and insure your Ford – without having to leave the showroom.

**Ford Options** Ford Options is the flexible way to finance your Ford. If you are looking to renew your vehicle more often, this is the ideal plan. At the end of the agreement, choose which option suits you best – own the vehicle, return it or choose a new one.

**Ford Acquire** Ford Acquire is a simple method of vehicle finance for private customers and business users. Convenient to arrange, and with flexible terms to suit your needs, owning your Ford has never been so easy.

**Ford Business Partner** As a specialist division of Ford Credit dedicated to partnering businesses, Ford Business Partner will work with you to achieve a complete Contract Hire transport solution.

**Ford Insure** Ford Insure offers a wide range of products for you and your Ford including Comprehensive Motor Insurance, Payment Protection Plan\* and Guaranteed Asset Protection\*\*. When you purchase a Ford from a Ford Dealer, you will receive 7 days' Driveaway cover\*\*\* free when you call Ford Insure for a no-obligation annual quotation.

**What's the next step?** Your local Ford Dealer will be pleased to help if you have any further queries and advise you of current special promotions. Your Dealer can also supply a personalised quotation for the finance plan and vehicle of your choice. To find your local Ford Dealer, please call 0845 7111 888.

### Services

**Company Car Drivers** Talback - the company car drivers' club offers members extended test drives, tax and buying advice as well as special offers and invitations to special driver events. To join, log on to [www.talbackclub.com](http://www.talbackclub.com) or call 0845 605 55 66 - it's free and you don't even have to drive a Ford.

**Ford Mobility** MAGIC (Mobility and General Information Centre) is a Ford-dedicated care centre created to provide free and comprehensive information on all motoring and mobility issues to anyone requiring such assistance. MAGIC has many special offers for HRDLA recipients, or Motability scheme users, call free on 0800 240 241.

**Ford Protect** Every new Ford car sold is protected by a 3-year/60,000 miles Ford Protect Classic Plan Warranty. In addition, it will also come with Ford Assistance for 1 year, providing roadside assistance in the UK and throughout Europe. You can also upgrade to a Ford Protect Premium Plan, giving you the option of scheduled servicing and extended Ford Assistance.

**Ford Rapid Fit** The national fast-fit network backed by Ford, offering you the convenience of a 'no-appointment-necessary, while-you-wait' service covering tyres, exhausts, brakes, batteries and much more. There are over 260 sites nationwide.

**Ford Accident Repair Centres** If your Ford is involved in an accident, your Ford Dealer is best placed to return it to its pre-accident condition. Dealerships displaying the Ford Accident Repair Centre sign all meet the rigorous customer service and repair quality standards laid down by Ford, and offer a three-year repair guarantee.

**Ford Customer Relationship Centre** In the unlikely event that your Ford Dealer can't help you or you need to speak to Ford directly, the Ford Customer Relationship Centre is just a phone call away. Call local rate 0845 841 1111.

**Ford Rental - local service nationwide** Providing quality car and van rental from Ford's latest model range. For further information contact your local Ford Dealer.

Finance subject to status and conditions. Over 18s only. Guarantees/Indemnities may be required. Written quotations on request: Freepost Ford Credit. Correct at the time of going to print. Contact your Ford Authorised Dealer for terms and conditions. Business Partner Contract Hire is provided by Lex Vehicle Leasing, Registered address: Lex Vehicle Leasing Limited, 17 Connaught Place, London W2 2EL Registered in England 2952868. Ford Insure is underwritten by Norwich Union Insurance Limited, registered in England no. 99122. A member of the Aviva group. Authorised and regulated by the Financial Services Authority. Registered office: 8 Surrey Street, Norwich NR1 3NG. For our joint protection, calls may be recorded and/or monitored. \*Please refer to Payment Protection policy booklet for full details of the benefits and exclusions. \*\*Ford Insure Guaranteed Asset Protection is underwritten by Mapfre Asistencia Compania Internacional de Seguros y Reaseguros Sociedad Anonima, Registered Address: Mapfre House 2/3 Philpot Lane, London EC3M 8AN. Company number: FC021974. Branch number: BR008042. Authorised and regulated by the Financial Services Authority. \*\*\*Excesses apply. Please refer to Summary of Cover for details. Maximum 5 vehicles. Not available in conjunction with any other promotion.



# Specification

## Exterior dimensions

	Galaxy
<b>Exterior (mm)</b>	
Overall length without towbar	4820
Overall length with towbar	4921
Overall width without mirrors	1884
Overall width with mirrors	2154
Overall height (unladen)	1764-1807
Wheelbase	2850
Front overhang	918
Rear overhang	1052
Front tread	1578
Rear tread	1600

## Interior dimensions

	Galaxy
<b>Front (mm)</b>	
Headroom	1056
Maximum effective leg room	1088
Shoulder room	1531
<b>2nd row (mm)</b>	
Headroom	1022
Minimum effective leg room	991
Shoulder room	1535
<b>3rd row (mm)</b>	
Headroom	975
Minimum effective leg room	887
Shoulder room	1359
<b>Luggage area (mm)</b>	
Maximum cargo height	964
Maximum cargo width	1215
Maximum cargo width between wheel arches	1146
Maximum cargo length to back of 3rd row seats	557
Minimum cargo length to back of 3rd row seats	397
Maximum cargo length to back of 2nd row seats	1306
Minimum cargo length to back of 2nd row seats	1156
Maximum cargo length to back of front seats	2095
<b>Stowable luggage (litres)<sup>‡</sup></b>	
7-seat mode (laden to top of seat) (min./max.)	308/435
5-seat mode (laden to roof) (min./max.)	1130/1260
2-seat mode (laden to roof)	2325

<sup>‡</sup> Measured using the VDA method. Dimensions may vary dependent on the model and equipment fitted.

## Engine data

	Engine technical features	Maximum power <sup>°</sup>	Maximum torque <sup>°</sup>
<b>2.0 Duratec</b> 1999 cc	4 cylinders in line; DOHC; 16 valves; variable intake system; alloy cylinder head and block; electronic multipoint fuel injection	107 kW (145 PS) at 6000 min <sup>-1</sup> (rpm)	190 Nm at 4500 min <sup>-1</sup> (rpm)
<b>2.3 Duratec</b> 2261 cc	4 cylinders in line; DOHC; 16 valves; intake variable cam timing; alloy cylinder head and block; electronic multipoint fuel injection; dual mass flywheel	118 kW (161PS) at 6500 min <sup>-1</sup> (rpm)	tba Nm at tba min <sup>-1</sup> (rpm)
<b>1.8 Duratorq TDCi Euro IV Diesel</b> 1753 cc	4 cylinders in line; SOHC; 8 valves; cast iron head and block; direct injection with high pressure, common-rail, multipoint fuel injection system; electrically actuated variable geometry turbocharger with intercooler and transient torque overboost function; electronic-EGR; dual-mass flywheel	74 kW (100 PS) at 3850 min <sup>-1</sup> (rpm)	280 / 300* Nm at 1750 min <sup>-1</sup> (rpm)
<b>1.8 Duratorq TDCi Euro IV Diesel</b> 1753 cc	4 cylinders in line; SOHC; 8 valves; cast iron head and block; direct injection with high pressure, common-rail, multipoint fuel injection system; electrically actuated variable geometry turbocharger with intercooler and transient torque overboost function; electronic-EGR; dual-mass flywheel	92 kW (125 PS) at 3700 min <sup>-1</sup> (rpm)	320 / 340* Nm at 1750 min <sup>-1</sup> (rpm)
<b>2.0 Duratorq TDCi Euro IV Diesel</b> 1997 cc	4 cylinders in line; DOHC; 16 valves; alloy cylinder head; direct injection with high-pressure, common-rail, multipoint fuel injection; variable geometry turbocharger with intercooler and transient torque overboost function; electronic throttle; dual-mass flywheel	96 kW (130PS) at 4000 min <sup>-1</sup> (rpm)	320 / 340* Nm at 2000 min <sup>-1</sup> (rpm)
<b>2.0 Duratorq TDCi Euro IV Diesel</b> 1997 cc	4 cylinders in line; DOHC; 16 valves; alloy cylinder head; direct injection with high-pressure, common-rail, multipoint fuel injection; variable geometry turbocharger with intercooler and transient torque overboost function; electronic throttle; dual-mass flywheel	103 kW (140 PS) at 4000 min <sup>-1</sup> (rpm)	320 / 340* Nm at 2000 min <sup>-1</sup> (rpm)

<sup>°</sup>Tested in accordance with ISO 1585. **EGR** = Exhaust Gas Recirculation. \*With transient overboost. All figures quoted above are final homologation figures only.

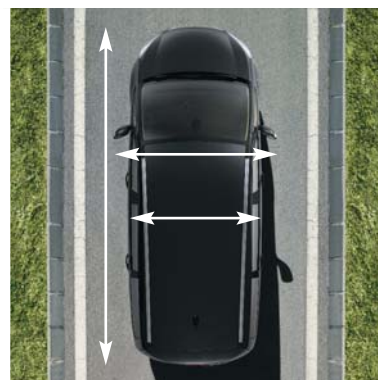
## Fuel, performance and emissions

	Stage	Derivative(s)	CO <sub>2</sub> emissions (g/km) <sup>°°</sup>	Fuel consumption in L/100 km (mpg) <sup>°°°</sup>			Performance <sup>°</sup>		
				Urban	Extra Urban	Combined	Max. speed (mph)	0-60 mph (secs)	30-60 mph* (secs)
<b>Ford Galaxy</b>									
2.0 Duratec	Stage IV	LX, Zetec, Ghia	197	11.2 (25.2)	6.5 (43.5)	8.2 (34.4)	121	10.7	15.5
2.3 Duratec, Durashift 6-speed automatic	Stage IV	LX, Zetec, Ghia	tba	tba	tba	tba	118	11.1 <sup>†</sup>	tba
1.8 Duratorq TDCi (100 PS)	Stage IV	LX	166	8.0 (35.3)	5.3 (53.3)	6.3 (44.8)	106	13.8	13.6
1.8 Duratorq TDCi (125 PS)	Stage IV	LX, Zetec	166	8.0 (35.3)	5.3 (53.3)	6.3 (44.8)	114	11.4	12.8
1.8 Duratorq TDCi (125 PS), Durashift 6-speed manual	Stage IV	LX, Zetec, Ghia	166	8.0 (35.3)	5.3 (53.3)	6.3 (44.8)	116	11.3	10.7
2.0 Duratorq TDCi (130PS), Durashift 6-speed automatic	Stage IV	LX, Zetec, Ghia	196	10.0 (28.2)	5.9 (47.9)	7.4 (38.1)	116	11.8 <sup>†</sup>	tba
2.0 Duratorq TDCi (140 PS), Durashift 6-speed manual	Stage IV	LX, Zetec, Ghia	172	8.2 (34.4)	5.5 (51.4)	6.5 (43.5)	120	9.9	9.6

\*In 4th gear. <sup>°</sup>Ford test figures. <sup>°°</sup>All CO<sub>2</sub> emissions figures in g/km and fuel consumption figures in L/100 km are from officially approved tests in accordance with 80/1268/EEC as amended. <sup>†</sup>Provisional data only. All other figures quoted above are final homologation figures. The CO<sub>2</sub> emissions and fuel consumption test figures shown in the chart do not express or imply any guarantee of the fuel consumption of a car of the class in question. All the figures are based on tests conducted on vehicles with LX equipment level and with standard wheels and tyres; optional or accessory wheels and tyres may have an effect on the emissions and fuel consumption of a vehicle. **Urban** An engine started from cold in laboratory conditions operated at varying speeds, maximum 50 km/h, average 19 km/h over a theoretical distance of 4 km. **Extra Urban** Conducted immediately after the urban cycle, it consists of half steady speed driving and half varying speed driving, maximum 120 km/h over a distance of 7 km. **Combined** This is an average of the two parts of the test, weighted by the distances covered in each part. **Note** All vehicles are 5-speed Durashift manual unless stated. All petrol engines are equipped with a catalytic converter.

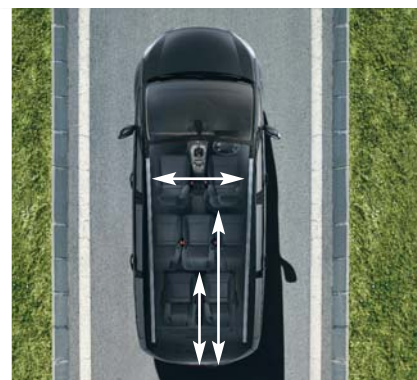
### Exterior dimensions

Ford Galaxy is accommodating when it comes to your passengers and luggage, while its lower stance gives it a more streamlined shape.



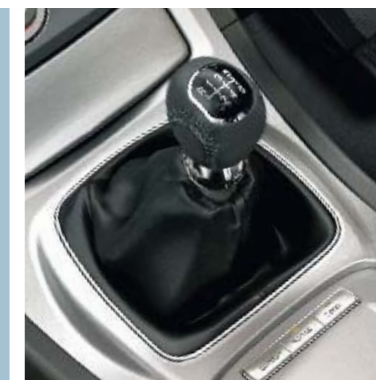
### Interior dimensions

More spacious, more flexible. Ford Galaxy's designers have put every inch of the extra space to good use - so that you can too.



### Duratorq TDCi diesel engines

The 1.8 and 2.0-litre Duratorq TDCi engines have an overboost feature for extra acceleration during overtaking - plus, for those in need of even more pulling power, the 2.0-litre units provide a remarkable 340 Nm of peak torque.



### 6-speed Durashift manual transmission

The smooth-shifting 6-speed manual transmission helps to make the most of the new Ford Galaxy's flexible performance, while enhancing fuel efficiency. Optional with the 1.8-litre (125 PS) and standard with the 2.0-litre Duratorq TDCi diesel engine.



# Specification

## Model availability, weights and loads

	Kerbweight (kg) <sup>†</sup>	Gross Vehicle Mass (kg)	Max. Towable Mass (kg)	Max. GVM (with trailer in use and speed limit of 100 km/h) (kg) <sup>*</sup>	Payload (kg) <sup>‡</sup>
<b>Ford Galaxy</b>					
2.0 Duratec	1697-1829	2415	1100	2415	586-718
2.3 Duratec, Durashift 6-speed automatic. Available from August 2007	tba	tba	tba	tba	tba
1.8 Duratorq TDCi (100 PS)	1793-1926	2505	1400	2505	579-712
1.8 Duratorq TDCi (125 PS)	1793-1926	2505	1400	2505	579-713
1.8 Duratorq TDCi (125 PS), Durashift 6-speed manual	1807-1941	2505	1400	2505	564-698
2.0 Duratorq TDCi (130 PS), Durashift 6-speed automatic	tba	tba	tba	tba	tba
2.0 Duratorq TDCi (140 PS), Durashift 6-speed manual	1799-1933	2505	1700	2505	572-706

<sup>†</sup>Represents the lightest kerbweight assuming the driver at 75 kg, full fluid levels and 90% fuel levels, subject to manufacturing tolerances and options fitted. <sup>‡</sup>Payload = Gross vehicle mass less kerbweight. <sup>\*</sup>Towing limit figures stated refer to an increased GVM, when driving with a trailer approved for 100km/h. **Note** All vehicles are 5-speed Durashift manual unless stated. All petrol engines are equipped with a catalytic converter. **Towing limits** quoted represent the maximum towing ability of the vehicle at its Gross Vehicle Mass to restart on a 12 per cent gradient at sea level. The performance and economy of all models will be reduced when used for towing. **Nose weight limit** is a maximum of 80 kg on all models. All figures quoted are final homologation figures only.

## Mechanical features

	LX	Zetec	Ghia
<b>Brakes &amp; vehicle control</b>			
Disc brakes – Front and rear (ventilated front, solid rear)	●	●	●
Anti-lock brakes (ABS) with Electronic Brake-force Distribution (EBD)	●	●	●
Electronic Stability Programme (ESP) with Traction Assist and Emergency Brake Assist (EBA)	●	●	●
Interactive Vehicle Dynamics Control (IVDC) with Continuous Controlled Damping (CCD) and Hill Launch Assist (not available with sport suspension or self-levelling rear suspension)	○	○	○
Adaptive Cruise Control (ACC) with Forward Alert (FA) and Hill Launch Assist		○	○
Electric Parking Brake (EPB)	○	○	○
Emergency (Hazard Warning) Brake Lights	●	●	●
<b>Fuel tank</b>			
70 litres (useable capacity)	●	●	●
<b>Steering</b>			
Hydraulic Power-Assisted Steering (HPAS) (except 2.0 Duratorq TDCi)	●	●	●
Electric Hydraulic Power-Assisted Steering (EHPAS) (2.0 Duratorq TDCi only)	●	●	●
<b>Suspension and body</b>			
Front – Independent with MacPherson struts, angled coil/spring damper units and lower A-arms, anti-roll bar	●	●	●
Rear – Independent Control Blade multi-link system, anti-roll bar	●	●	●
Rear – Self-levelling (not available with IVDC, sports suspension or fixed towbar)	○	○	○
Suspension – Sports (not available with IVDC or self-levelling rear suspension)	○	○	○
<b>Turning circle</b>			
Kerb to kerb – 11.9 m	●	●	●

● = Standard, ○ = Optional, at extra cost, □ = Part of option pack, at extra cost

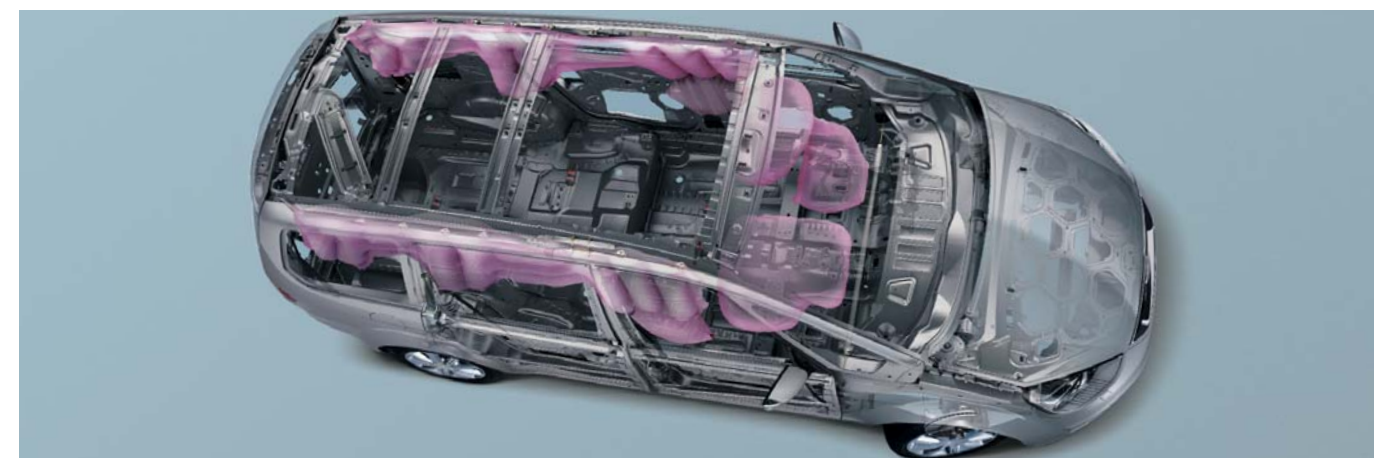
## Insurance groups

	LX	Zetec	Ghia
<b>Ford Galaxy</b>			
2.0 Duratec	11E	11E	11E
2.3 Duratec, Durashift 6-speed automatic. Available from August 2007	tba	tba	tba
1.8 Duratorq TDCi (100 PS)	10E		
1.8 Duratorq TDCi (125 PS)	10E	10E	
1.8 Duratorq TDCi (125 PS), Durashift 6-speed manual	10E	10E	10E
2.0 Duratorq TDCi (130PS), Durashift 6-speed automatic	11E	11E	11E
2.0 Duratorq TDCi (140 PS), Durashift 6-speed manual	11E	11E	11E

E = Exceeds security requirement for model concerned and group rating has been reduced.

## Safety and security

	LX	Zetec	Ghia
<b>Safety</b>			
<b>Intelligent Protection System (IPS):</b>			
Airbags – Driver's and front passenger's*	●	●	●
Airbags – Front side impact, driver's and front passenger's	●	●	●
Airbags – Front, 2nd and 3rd row, side curtain airbags deployed from the headlining	●	●	●
Airbags – Driver's knee bolster airbag	●	●	●
Seat belts – 3-point seat belts with pre-tensioners and retractors (front seats only)	●	●	●
Seat belts – Front, height adjustable mounts	●	●	●



### Intelligent Protection System

Beneath the steel safety cages lies a comprehensive airbag system, three-point seat belt pre-tensioners and collapsible steering column and pedals. All ready to spring into action in a fraction of a second.

### Driver's and front passenger's airbag\*

Instant protection in the event of a head-on collision.

### Curtain airbags

1st, 2nd and 3rd row curtain airbags for side impact protection.

### Driver's knee airbag

The driver's knee bolster airbag helps prevent injuries through contact with the steering column.

**\*Note:** A child seat should never be placed in the front passenger seat when the Ford vehicle is equipped with an operational front passenger's airbag. The safest place for children is properly restrained on the second row seats.

### Adaptive Cruise Control (ACC) with Forward Alert (FA)

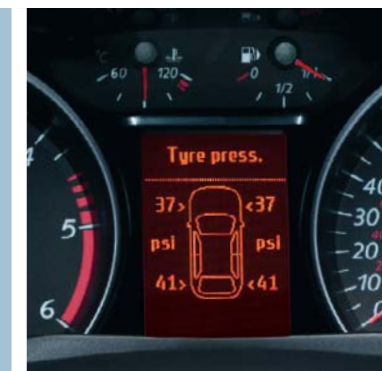
A clever combination of cruise control and distance control. Simply enter the desired speed and distance from the vehicle in front, and ACC will automatically maintain the set distance if traffic conditions do not allow travel at the desired cruising speed. (Option)

Forward Alert (FA) offers an audible and visual warning when there's a risk of colliding with the vehicle in front. At the same time, Emergency Brake Assist (EBA) prepares the brakes to facilitate full braking performance by increasing pressure within the brake system.



### Hill Launch Assist

After releasing the brake pedal when stationary, the system keeps the wheels braked, leaving you enough time to move your foot from the brake pedal to the accelerator without the car rolling backwards. Included as part of the Adaptive Cruise Control (ACC) or Interactive Vehicle Dynamics Control (IVDC) options.



### Tyre Pressure Monitoring System (TPMS)

Allows you to monitor tyre pressure while on the move. System alerts you if a tyre's pressure is too low or if the vehicle suffers a puncture. (Option; also included with run-flat tyres)



# Specification

## Safety and security

	LX	Zetec	Ghia
Collapsible steering column and pedals	●	●	●
Seats – ISOFIX attachments for child seat (outer seats on 2nd row only)	●	●	●
Passenger Airbag Deactivation Switch - Dealer fitted	○	○	○
<b>Security</b>			
Vehicle Identification Number (VIN) – Visible	●	●	●
Immobiliser – Passive Anti-Theft System (PATS)	●	●	●
Fuel flap – Central locking linked	●	●	●
Locks – High-security, anti-burst, shielded with strengthened mountings and childproof locks on rear doors	●	●	●
Locks – Remote control central double locking	●	●	●
2nd remote key		●	●
Alarm – Perimeter with volume sensing (Thatcham Category 1)	○	●	●

● = Standard, ○ = Optional at extra cost.

**\*Note: A child seat should never be placed in the front passenger seat when the Ford vehicle is equipped with an operational front passenger's airbag. The safest place for children is properly restrained on the second row seats.**

## Wheel availability

	LX	Zetec	Ghia
6½x16" steel with 7-spoke wheelcovers and 215/60 Rx16 tyres	●		
7x17" steel with 7-spoke wheelcovers, 225/50 Rx17 run-flat tyres and Tyre Pressure Monitoring System	○		
6½x16" 5-spoke alloy with 215/60 Rx16 tyres		●	
6½x16" multi-spoke alloy with 215/60 Rx16 tyres			●
7x17" 5-spoke alloy machined with 225/50 Rx17 tyres		○	○
7x17" alloy (9-spoke until June 2007; 10-spoke thereafter) with 225/50 Rx17 tyres. Included as part of Ghia X Pack			□
7x17" alloy (9-spoke until June 2007; 10-spoke thereafter) with 225/50 Rx17 run-flat tyres and Tyre Pressure Monitoring System		○	○
Locking wheel nuts (only available with alloy wheels)		●	●
Tyre Pressure Monitoring System. Included on any vehicle specified with run-flat tyres	○ / □	○ / □	○ / □

● = Standard, ○ = Optional, at extra cost, □ = Included with another feature or part of an option pack, at extra cost

## Exterior features

	LX	Zetec	Ghia
<b>Styling</b>			
Bodyside mouldings – Body colour	●	●	●
Bumper – Front, body colour, with integrated rub strips	●	●	●
Door handles – Body colour		●	
Door handles – Body colour, with chrome insert			●
Paint – Metallic	○	○	○
Panorama roof – Fixed glass with infra-red protection and manual sunblinds (includes full length overhead console, child observation mirror and illuminated sunvisor vanity mirrors). Included as part of Ghia X Pack		○	○ / □
Radiator grilles – Black mesh with chrome finish on upper grille surround and body colour lower grille surround	●	●	●
Chrome finish on upper doorline			●
<b>Functional</b>			
Door mirrors – Electrically-operated and heated, body colour housings, with side turn indicators and, on Ghia, puddle lights	●	●	●
Door mirrors – Electrically-operated and heated, body colour housings, power folding with side turn indicators and puddle lights. Included as part of Technology Seat Pack		○	○ / □
Heated rear window	●	●	●
Heated windscreen – 'Quickclear'	●	●	●
Electronic tailgate release	●	●	●
Glass – Privacy, dark tinted (rear side windows only)	●	●	●
'Park Assist' – Front and rear sensors	○	●	●
Roof carrier system (C-track) – Chrome finish with black caps	●	●	●
Sliding cross bars for roof carrier system (C-track) – Aluminium bars with black feet (supplied with the vehicle but not factory-fitted)	○	○	○
Towbar – Fixed (including 13-pin electrical kit) (not available with self-levelling rear suspension)	○	○	○
Towbar – Retractable (including 13-pin electrical kit)	○	○	○
Windscreen – Solar Reflect Windshield			○
Wipers – Front, variable intermittent with electric wash	●	●	
Wipers – Autowipers, with rain sensor			●
Wipers – Tailgate, intermittent with electric wash and auto reverse wipe	●	●	●
<b>Lights</b>			
Halogen Adaptive Front Lighting System with static cornering lamps	○	○	○
Bi-Xenon Front Lighting System with static cornering lamps, automatic headlight levelling and washer jets		○	○
Automatic headlights			●
Headlamp delay (switch-off headlights)	●	●	●
Front fog lights	●	●	●
Rear fog lights, reversing light, high-mounted rear brake light	●	●	●

● = Standard, ○ = Optional, at extra cost, □ = Included with another feature or part of an option pack, at extra cost.

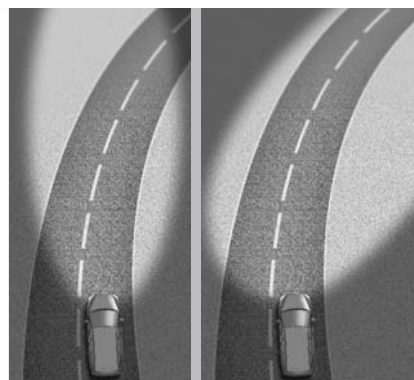
### Bi-Xenon Front Lighting System

Ford Galaxy's bi-xenon headlights shine brighter and project a wider angle of light than conventional headlights. More than twice as powerful as halogen headlights, but using only two thirds of the energy. Includes static cornering lamps. (Option)



### Adaptive Front Lighting System (AFS)

The Adaptive Front Lighting System (AFS) adjusts the headlights to aim precisely where you are heading, making for safer and more enjoyable night driving. Static cornering lamps provide extra light for sharp bends and junctions. (Option)



### Hazard warning lights

The hazard warning lights (front and rear indicators) automatically flash during heavy braking, giving following drivers advance warning of a potentially hazardous situation.



### Park Assist

With the Ford Galaxy, you won't have to pass by those more challenging parking spaces. An audible warning helps you safely judge the distance between the front and rear of your car and an obstacle, for easier parking and manoeuvring. Standard on Zetec and Ghia; option on LX.



# Specification

## Audio and communication systems

	LX	Zetec	Ghia
Stereo CD/radio – Model 6000 CD, RDS EON, 'Keycode' anti-theft coding	●	●	
Sony CD audio system – Stereo radio/CD/MP3, RDS EON, PTY, MP3 capability, 40 station settings, 'Keycode' anti-theft coding, DPS, 8 premium speakers, new 'Island Design' centre stack	○	○	●
Sony 6CD audio system – Stereo radio/6 disc in-dash CD autochanger/MP3, RDS EON, PTY, MP3 capability, 40 station settings, 'Keycode' anti-theft coding, DPS, 8 premium speakers, new 'Island Design' centre stack		○	○
Steering wheel mounted toggle controls	●	●	●
CD navigation system – Bosch Blaupunkt TravelPilot EX, MP3 capability, 4" monochrome display with external 6-disc CD autochanger (located under driver's seat), 10 speakers (not available with Ford Convers+ premium instrument cluster; requires conventional cluster)	○	○	○
DVD navigation system – 7" touchscreen, colour display, MP3 capability, 10 premium speakers with external 6-disc CD autochanger		○	○
MultiMedia DVD system – DVD player located under front passenger's seat, two LCD screens integrated in the front head restraints, with infra red remote control and two infra red headphones		○	○
Advanced Bluetooth® Hands-Free and Voice Control System (excludes cradle and tri-band antenna). Mobile phone not included. Included as part of LX Driver's Pack	○ / □	○	○
Premium Bluetooth® Hands-Free and Voice Control System (includes pre-equipment pack (with battery charging) and tri-band antenna). Phone specific cradle is extra cost and requires dealer-fitment. Please check with dealer for phone compatibility. Mobile phone not included	○	○	○
Portable music player connection socket	●	●	●

● = Standard, ○ = Optional, at extra cost, □ = Part of option pack, at extra cost.

The Bluetooth® word mark and logos are owned by the Bluetooth SIG, Inc. and any use of such marks by Ford Motor Company is under licence. Other trademarks and trade names are those of their respective owners.

## Interior features

	LX	Zetec	Ghia
<b>Comfort and convenience</b>			
Accessory socket/cigar lighter – Front	●	●	●
Air recirculation switch	●	●	●
Air conditioning – CFC-free	●		
Air conditioning – CFC-free with Dual-zone Electronic Automatic Temperature Control (DEATC). Included as part of LX Driver's Pack	□	●	●
Air conditioning – Rear compartment. Included as part of Ghia X Pack			□
Centre console – Includes stowage, two moulded cup holders, and 2nd row rear ashtray	●	●	●
Centre console – Overhead, short length, including sunglasses stowage	●		
Centre console – Overhead, medium length, including child observation mirror (not available with panorama roof)		●	
Centre console – Overhead, full length, including child observation mirror (only available on Zetec if specified with panorama roof or electrically-operated opening rear quarter vents)		□	●
Clock – Digital (within audio unit display)	●	●	●
Cup holders – Two integrated into centre console, and one located in 3rd row sidewall trim	●	●	●
Grab handles – Front, 2nd and 3rd row folding with rear coat hooks	●	●	●
Mirror – Auto-dimming rear-view			●
Mirror – Located in front overhead console to watch children		●	●
Stowage - Located in rear quarter panels and rear quarter side trim panels	●	●	●
Stowage trays – Front driver's and passenger's underseat foot area (not available with CD/DVD navigation or MultiMedia DVD system)	○	○	●
Stowage trays – Rear 2nd row underseat foot area	●	●	●

## Interior features

	LX	Zetec	Ghia
Sunblinds – Integrated pull-up on 2nd row and 3rd row windows (includes electrically-operated rear windows on LX). Included as part of Ghia X Pack	○	○	○ / □
Sunvisors – Driver's and passenger's with mirror and cover	●		
Sunvisors – Driver's and passenger's with illuminated mirror and cover		●	●
Windows – Front, electrically-operated with one-touch lowering/closing on driver's side and global opening/closing	●		
Windows – Front and rear, electrically-operated with one-touch lowering/closing, anti-trap feature and global opening/closing (only available on LX if specified with integrated sunblinds)	□	●	●
Windows – Rear quarter vents, fixed	●	●	●
Windows – Rear quarter vents, electrically-operated opening (includes full length overhead console on Zetec)		○	○
<b>Seat and seat belts</b>			
Front seat – Driver's manual height adjustment	●		
Front seat – Driver's power height adjustment with manual adjustable lumbar support		●	●
Front seat – Driver and passenger's 8-way power adjustment (includes manual adjustable lumbar support on passenger seat). Included as part of Technology Seat Pack		○	○ / □
Front seats – Anti-submarining, fully reclining with height-adjustable head restraints	●	●	
Front seats – Anti-submarining, fully reclining with fully-adjustable head restraints (only available on Zetec if specified with leather trim)		□	●
Front seats – Comfort-style with inboard armrests	●	●	●
Front seats – Heated, with variable control	○	○	○
Front seats – Variable climate control			○
2nd row seats – Three individual fold-flat seats with height-adjustable head restraints	●	●	●
2nd row seats – Easy entry tip and slide system	●	●	●
3rd row seats – Two individual fold-flat seats with height-adjustable head restraints	●	●	●
Seats – Leather trimmed with contrast stitching on Ebony leather (includes velour front and rear door trim). Included as part of Ghia X Pack		○	○ / □
Seat back trays – Folding		●	●
Stowage pockets – Front seat backs	●	●	●
Seat belts – Front, inertia reel, with grabbers, pre-tensioners and height-adjustable mounts. Rear, three inertia reel, lap and diagonal (2nd row), two inertia reel, lap and diagonal (3rd row)	●	●	●
<b>Carpet and trim</b>			
Door handles – Satin Chrome finish	●	●	●
Floor mats – Carpet slip mats, front and rear			●
Gear lever knob – Leather trimmed		●	●
Handbrake cover – Leather trimmed			●
Scuff plates – Front, bright-finish			●
<b>Instruments and controls</b>			
Headlight levelling control	●	●	●
Trip/fuel computer, incorporating exterior air temperature display and low temperature warning lights	●	●	●
Warning indicators for glow plugs on (diesel only), brake system, airbags, lights on, main beam, front and rear fog lights, handbrake, ESP, coolant temperature, driver's seat belt, ignition on, oil pressure, oil change, tyre pressure sensors (where specified), 'lights on', key in ignition, door ajar and front seat belt reminder warning alarms	●	●	●
Ford Convers+ premium instrument cluster with 256 colour display			○
Illuminated recirculation heater controls – 4-speed fan, with pollen filter, direction control, two dedicated side window demists and rear compartment ducts	●	●	●
Cruise control (includes leather-trimmed steering wheel on LX)	○	○	●
Steering column – Reach and rake adjustable	●	●	●
Steering wheel – Leather-trimmed with contrast stitching on Ebony leather (only available on LX if specified with Cruise control)	□	●	●

### Toggle controls

Steering wheel-mounted toggle controls let you operate the audio system and trip computer without taking your hands off the wheel. (For use with Ford audio systems only)



### Electric Parking Brake (EPB)

The stylish EPB delivers the ultimate in comfort and convenience. To engage and disengage the handbrake takes a simple touch of a button. It will even disengage automatically if you choose. (Option)



### Rear compartment air conditioning

Carefully positioned ducts provide optimum ventilation for all three rows of passengers – with a separate compressor delivering additional cooling capacity for rear passengers. Included as part of the optional Ghia X Pack.



### Ford Boutique stowage box

This portable stowage box is perfect for toys, shopping or anything else you need to keep from moving around the cabin whilst driving. (Accessory)



# Specification

## Interior features

	LX	Zetec	Ghia
<b>Interior lighting</b>			
Courtesy light – Front overhead with theatre-style dimming and delayed switch-off	●	●	●
Courtesy lights – Front overhead with 2nd and 3rd row courtesy lights	●		
Courtesy lights – Front overhead with 2nd and 3rd row courtesy lights and 2nd row reading lights		●	
Courtesy lights – Front overhead with 2nd and 3rd row courtesy lights, 2nd and 3rd row reading lights, and front footwell light			●
Courtesy lights – Illuminated entry system (courtesy lights and door mirror puddle lights, if fitted, illuminate when vehicle unlocked)	●	●	●
<b>Luggage compartment</b>			
Courtesy lights – Two	●	●	●
Tie-down hooks	●	●	●
Load protection net	○	○	○
Dog guard. Available in two versions for fitment behind either the first or second row seats	○	○	○
Tonneau cover	○	○	○

● = Standard, ○ = Optional, at extra cost, □ = Included with another feature or part of an option pack, at extra cost.

## Option packs

	LX	Zetec	Ghia
LX Driver's Pack – Dual-zone Electronic Automatic Temperature Control (DEATC), Advanced Bluetooth® Hands-Free and Voice Control System	○		
Ghia X Pack – Fixed panorama roof, 2nd row and 3rd row rear integrated pull-up sunblinds, leather trimmed seats (includes velour front and rear door trim), rear compartment air conditioning, 7x17" alloy wheels (9-spoke until June 2007; 10-spoke thereafter) with 225/50 Rx17 tyres. (not available with run-flat tyres)			○
Technology Seat Pack – Driver and passenger's 8-way power seat adjustment with manual adjustable lumbar support, electrically-operated/heated/folding door mirrors, memory function for driver's seat and door mirror adjustment			○

● = Standard, ○ = Optional, at extra cost.

### Dog guard system

Robust, full-height dog guard system keeps dogs or items of luggage safely away from the passengers. Two versions available (one version is fixed behind the front seats and the other version is fixed behind the second row of seats). Meets European ECE-R17 safety requirements. (Option and accessory)



### Load protection net

This durable retention net keeps your items secure in the luggage compartment while you're on the move. Meets ECE-R17 safety requirements. (Option and accessory)

