

Finance and services

Across the UK, a dedicated network of Ford Dealers is equipped and trained to meet the needs of today's drivers. Because of our coveted reputation for quality and reliability, from the moment your new vehicle leaves the showroom, you are assured of lasting, attentive service in many ways. Ford not only cares through Dealers, we also offer a variety of finance and leasing schemes to suit the needs of both the private and business customer. With our wide choice of plans and services no one is more committed to delivering complete motoring confidence and total peace of mind than Ford.

Ford Credit

As part of Ford Motor Company Limited, Ford Credit offers convenient and competitive financial services to Ford customers. Choose, try, finance and insure your Ford – without having to leave the showroom.

Ford Options

Ford Options is the flexible way to finance your Ford. If you are looking to renew your vehicle more often, this is the ideal plan. At the end of the agreement, choose which option suits you best – own the vehicle, return it or choose a new one.

Ford Acquire

Ford Acquire is a simple method of vehicle finance for private customers and business users. Convenient to arrange, and with flexible terms to suit your needs, owning your Ford has never been so easy.

Ford Business Partner

As a specialist division of Ford Credit dedicated to partnering businesses, Ford Business Partner will work with you to achieve a complete Contract Hire transport solution.

Ford Insure

Ford Insure offers a wide range of products for you and your Ford including Comprehensive Motor Insurance, Payment Protection Plan* and Guaranteed Asset Protection**. When you purchase a Ford from a Ford Dealer, you will receive 7 days' Driveaway cover*** free when you call Ford Insure for a no-obligation annual quotation.

What's the next step?

Your local Ford Dealer will be pleased to help if you have any further queries and advise you of current special promotions. Your Dealer can also supply a personalised quotation for the finance plan and vehicle of your choice.

To find your local Ford Dealer, please call 0845 7111 888.

Services

Company Car Drivers

Talkback – the company car drivers' club offers members extended test drives, tax and buying advice as well as special offers and invitations to special driver events. To join, log on to www.talkbackclub.com or call 0845 605 55 66 – it's free and you don't even have to drive a Ford.

Ford Mobility

MAGIC (Mobility and General Information Centre) is a Ford-dedicated care centre created to provide free and comprehensive information on all motoring and mobility issues to anyone requiring such assistance. MAGIC has many special offers for HRDLA recipients, or Motability scheme users, call free on 0800 240 241.

Ford Protect

Every new Ford car sold is protected by 12 months' unlimited mileage manufacturer's warranty, plus the option of extending this warranty to a 3-year/60,000 miles Ford Protect Classic Plan at no extra cost. Upgrades are also available, giving you the option of extended Ford Assistance and scheduled servicing.

Ford Rapid Fit

The national fast-fit network backed by Ford, offering you the convenience of a 'no-appointment-necessary, while-you-wait' service covering tyres, exhausts, brakes, batteries and much more. There are over 260 sites nationwide.

Ford Accident Repair Centres

If your Ford is involved in an accident, your Ford Dealer is best placed to return it to its pre-accident condition. Dealerships displaying the Ford Accident Repair Centre sign all meet the rigorous customer service and repair quality standards laid down by Ford, and offer a three-year repair guarantee.

Ford Customer Relationship Centre

In the unlikely event that your Ford Dealer can't help you or you need to speak to Ford directly, the Ford Customer Relationship Centre is just a phone call away. Call local rate 0845 841 1111.

Ford Rental – local service nationwide

Providing quality car and van rental from Ford's latest model range. For further information, contact your local Ford Dealer.

MY 2007 GBR en

The Government fuel figures do not express or imply any guarantee of the fuel consumption of any particular car. The cars themselves have not been tested and there are inevitably differences between individual cars of the same model. In addition, a car may incorporate particular modifications. Furthermore, the driver's style and road and traffic conditions, as well as the extent to which the car has been driven and the standard of maintenance, will affect its fuel consumption. Insurance groups are only as recommended by the Association of British Insurers. You should always consult your insurance adviser for confirmation. Illustrations, descriptions and specifications. This catalogue was correct at the time of going to print. However, Ford policy is one of continuous product development. The right is reserved to change specifications, colours and prices of the models and items illustrated and described in this publication at any time. For the latest details always consult your Ford Dealer. Optional equipment. Throughout this publication, wherever a feature is described as being an 'Option' or 'Optional Fitment/Pack', etc., you should assume that it will be at extra cost to the base vehicle, unless specifically stated to the contrary. All models and colour combinations are subject to availability. *Ford Information Service. Calls are charged at national rate and may be recorded for training purposes.

K160

Published by Ford Motor Company Limited, Brentwood, Essex, England. Registered in England No. 235446. FA 1269/19 BJN 302305. FoE H01E. PN 673502/0806/160m/GBR en August 2006. © Ford Motor Company Limited.

www.ford.co.uk



Bright Yellow
Solid body colour

Colorado Red
Solid body colour

Deep Navy
Solid body colour

Frozen White
Solid body colour

Ocean Blue*
Metallic body colour

Deep Rosso Red*
Metallic body colour

Apple*
Metallic body colour

Performance Blue*
Metallic body colour

Amethyst*
Metallic body colour

Verdigris*
Metallic body colour

Tango Red*
Metallic body colour

Sea Grey*
Metallic body colour

Panther Black*
Metallic body colour

Moondust Silver*
Metallic body colour

Tonic*
Metallic body colour



Take your pick

Colour and trim

Model	Bumpers	Studio	Style / Style Climate		Zetec / Zetec Climate		Luxury		Sportka SE
Environment colour		Ebony	Ebony	Sage	Ebony	Sage	Ebony	Sage	Ebony
Seat fabric		Tic Toc	Tic Toc	Tic Toc	Tic Toc	Tic Toc	Leather	Leather	Leather
Solid body colours									
Bright Yellow	TQ/BC	P	P/A	S	P/A	S			
Colorado Red	TQ/BC	P	P/A		P/A	S	E		I
Deep Navy	TQ/BC	P	P/A	S	P/A	S			R
Frozen White	TQ/BC	P	P/A	S	P/A	S			
Metallic body colours*									
Amethyst	TQ/BC	P	P/A	S	P/A	S		S	
Apple	TQ/BC	P	P/A	S	P/A	S	E	S	
Deep Rosso Red	TQ/BC	P	P/A	S	P/A	S	E	S	
Moondust Silver	TQ/BC	P	P/A	S	P/A	S	E	S	I/R
Ocean Blue	TQ/BC	P	P/A	S	P/A	S	E	S	
Panther Black	TQ/BC	P	P/A	S	P/A	S	E	S	I/R
Performance Blue	BC								I
Sea Grey	BC		P/A	S	P/A	S	E	S	I/R
Tango Red	TQ/BC	P	P/A	S	P/A	S	E	S	I/R
Tonic	TQ/BC	P	P/A	S	P/A	S	E	S	
Verdigris	TQ/BC	P	P/A	S	P/A	S	E	S	

Seat trim colour key: S – Sage, E – Ebony, P – Plum, A – Aquarius Blue, G – Generic Blue, R – Racing Blue, I – Infra Red. **TQ – Torque Grey.** *Metallic paint is optional at extra cost on Ka Studio, Style, Style Climate, Zetec, Zetec Climate, Luxury and Sportka SE

*Metallic paint is optional on all models.

Small Ka Big personality

Upside down, from the inside out. Whichever way you look at it, Ford Ka is one of a kind. With its unmistakable styling, superb driving dynamics and a catch-me-if-you-can attitude, this is a small car with big ideas. If you're looking for more power, there's Ford Sportka SE with its aggressive styling and feisty 1.6-litre engine.

Whatever you're into, Ford Ka wants to be part of the action. So go on – let your hair down and have some fun.



The Ka Series 22

Ford and the environment 32

Specifications 34

Colours 40

Services 43

Choose your perspective

Models Style in Moondust Silver (fitted with optional alloy wheels), Sportka SE in Panther Black, SportKa SE in Moondust Silver, Luxury in Apple, Style in Bright Yellow

Arrive in style



Ka | Sportka SE |

Ka series page 22

Sportka SE page 28

There's just something about it. That curvaceous body. The sculpted headlights. Those distinctive bumpers. And that unmistakable zest for life. Ford Ka was made to be noticed. So if you want to reach your destination in style, it's time we introduced you to the Ford Ka family.



Go on, be daring

With a passion for life and a mischievous nature, you'll find Ford Ka where the action is. From the stylish and affordable Ka Studio to the well-appointed Ka Style Climate and the sumptuous Ka Luxury, Ford Ka oozes attitude.

A punchy 1.3-litre engine delivers a lively driving experience while power-assisted steering means the tiniest parking spaces were created just for you. So whatever's going on around you, you won't need to think twice about joining in.





Give yourself an air of mystery with Ka's tinted Privacy Glass (optional at extra cost).

Steal the show



Squeeze into those cheeky spaces with the help of the parking distance sensor (optional at extra cost)

Model Style in Frozen White
Options (at extra cost) Alloy Wheels, Reflex Pack

When it comes to making an entrance, Ford Ka certainly isn't shy. From the Style model upwards, body colour bumpers give you the edge. For that extra touch of class, Ka Zetec also boasts a roof spoiler, leather-trimmed steering wheel and gear knob. Or, for the ultimate wow factor, choose Ka Luxury with its gleaming alloy wheels, chrome-effect grille and chrome exhaust trim.

Ford Ka is proof that good things really do come in small packages. And you don't have to break the bank to break the mould.





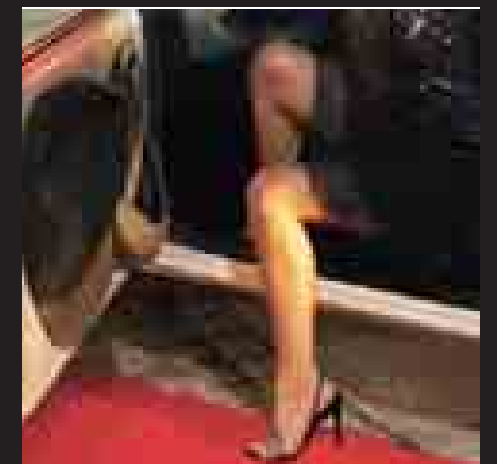
Model Style in Frozen White
Option Reflex Pack

Capture the moment

Fun-loving and spontaneous, Ford Ka lives for the moment. Because life's about seizing every opportunity – and creating some fantastic memories.

Flexible 50/50 split rear seats and a glovebox mean you can bring whatever you need for your latest adventure. And with a comfortable and stylish interior – including gorgeous leather seat trim on Ford Ka Luxury – you'll never fail to make a statement.

So if you like to be seen in all the right places, why not be remembered for all the right reasons?



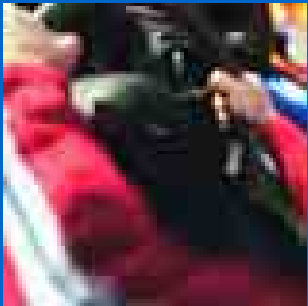
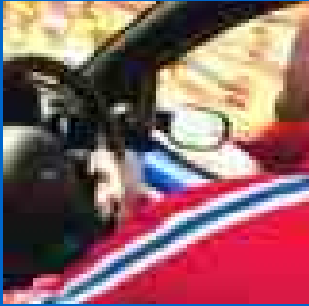
Model Sportka SE **Option** (at extra cost) Performance Blue metallic paint, Reflex Pack.

Set the pace



Every family has its bad boy. And the Ford Ka is no exception. With a feisty 1.6-litre Duratec engine, sports-tuned suspension, a wider stance and a slick, short-throw gear shift, every drive becomes invigorating. With Ford Sportka SE, there's no holding back. So if you live life at a faster pace, you've just met your equal.

Inside, you'll find striking sports-style front seats, leather-trimmed steering wheel and a cool aluminium gear knob. And with Sportka SE's built-in CD player, you can put your own soundtrack to every journey.



Sportka



Be anything but ordinary

Model Sportka SE Option (at extra cost) Performance Blue metallic paint

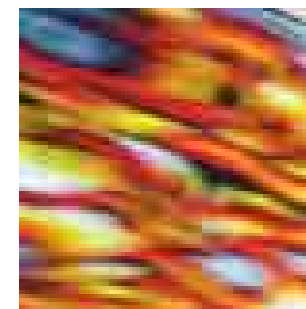
Of course, it's not just extra muscle that sets the Ford Sportka SE apart. Bold 16" alloy wheels, flared wheel arches and a slick rear spoiler give Sportka SE its distinctive, sporty look. You can also choose from a range of attention-grabbing metallic paints.

With cool leather-trimmed sports-style front seats, CFC-free air conditioning and 'Quickclear' heated windscreen, your Ford Sportka SE will always get the attention it deserves.





Ford Sportka SE was made for those days when you just can't sit still. It's always ready to join in your next adventure. So jump in, slip into gear and prepare yourself for some serious fun. If only cars could run on attitude.



Model Sportka SE **Option** (at extra cost) Performance Blue metallic paint
Accessories GT Stripes (at extra cost)

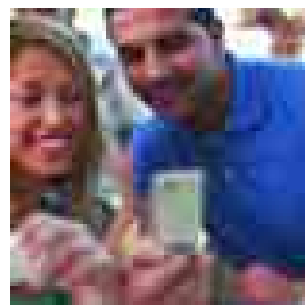
Unleash your energy





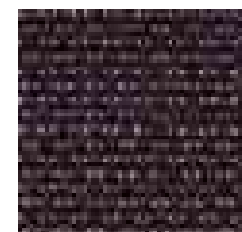
Spoilt for choice

Decisions, decisions. You've met the Ford Ka family. Now the difficult decision is which stunning model to choose...

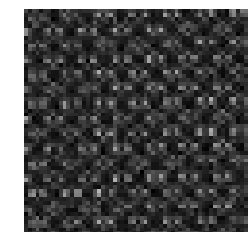


Style

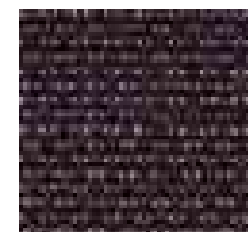
Style Climate



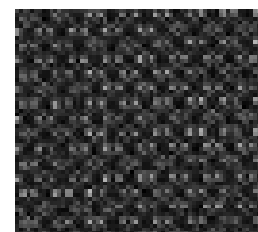
Tic Toc in Plum
Style



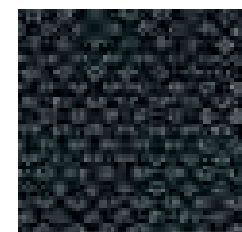
Tic Toc in Sage
Style



Tic Toc in Plum
Style Climate



Tic Toc in Sage
Style Climate



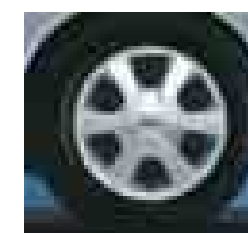
Tic Toc in Aquarius Blue
Style



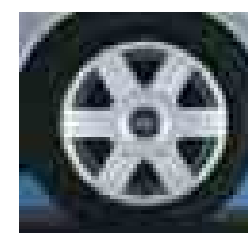
Tic Toc in Aquarius Blue
Style Climate



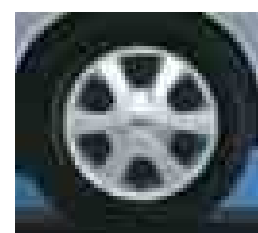
14" 6-spoke alloy*
Style



14" 6-spoke alloy*
Style (Accessory only)



14" 6-spoke alloy*
Style Climate



14" 6-spoke alloy*
Style Climate (Accessory only)

Style

- Body-coloured bumpers and door mirrors
- Anti-lock brakes (ABS)
- Power-assisted steering
- Driver's airbag
- Immobiliser – PATS (Passive Anti-Theft System)
- Stereo radio/CD, Model 6000
- Electric front windows
- Central door locking
- Remote Tailgate Release

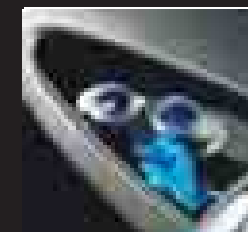
Style Climate

Additional to Style

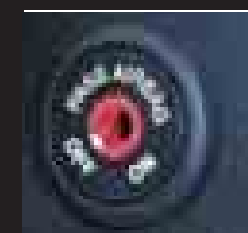
- Electrically-operated heated door mirrors
- CFC-free air conditioning
- 'Quickclear' heated front windscreen
- Remote central door locking
- Variable intermittent front wipers
- Reverse gear automatic rear-wiper
- Courtesy light delay

*Note: A child seat should never be placed on the front passenger seat when the Ford vehicle is equipped with an operational front passenger's airbag. The safest place for children is properly restrained on the rear seat.

*Optional, at extra cost.



Dashboard storage and glovebox.



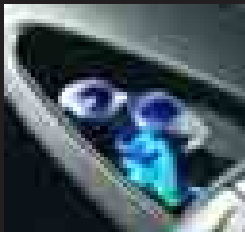
Passenger airbag deactivation switch*.

Interior shown is Style with Tic Toc in Plum and Reflex Pack (option at extra cost)

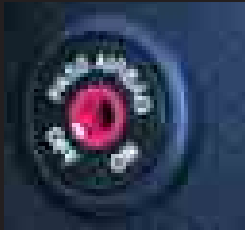


Zetec

Zetec Climate

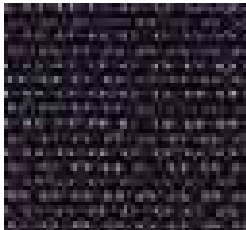


Dashboard storage and glovebox.

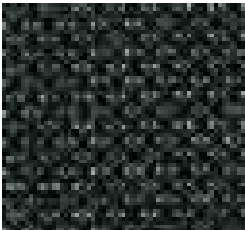


Passenger airbag deactivation switch.

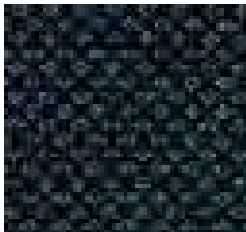
Interior shown is Zetec Climate with Tic Toc in Aquarius Blue and Reflex Pack (option at extra cost)



Tic Toc in Plum
Zetec



Tic Toc in Sage
Zetec

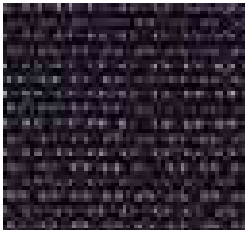


Tic Toc in Aquarius Blue
Zetec

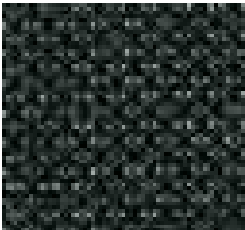


14" 8-spoke 'Minilite' alloy
Zetec

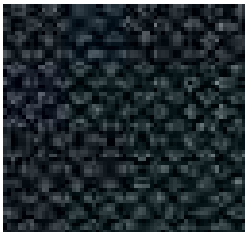
- Zetec**
Additional to Style
- 14" 8-spoke 'Minilite' alloy wheels
 - Roof spoiler
 - Tachometer
 - Leather-trimmed steering wheel
 - Leather-trimmed gear knob
 - Bright-finish scuff plates with Ka logos
 - Driver's seat with manual height adjustment
 - Rear seat head restraints
 - Front passenger seat-back storage net
 - Remote central door locking



Tic Toc in Plum
Zetec Climate



Tic Toc in Sage
Zetec Climate



Tic Toc in Aquarius Blue
Zetec Climate



14" 8-spoke 'Minilite' alloy
Zetec Climate

- Zetec Climate**
Additional to Zetec
- Electrically-operated heated door mirrors
 - CFC-free air conditioning
 - 'Quickclear' heated front windscreen

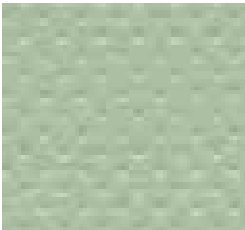
*Note: A child seat should never be placed on the front passenger seat when the Ford vehicle is equipped with an operational front passenger's airbag. The safest place for children is properly restrained on the rear seat.
*Optional, at extra cost



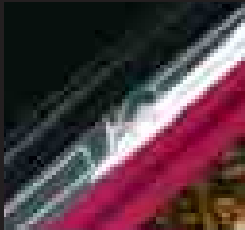
Luxury



Leather in Ebony
Luxury



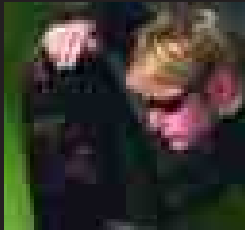
Leather in Sage
Luxury



Aluminium scuff plates



14" 5x2 spoke alloy
Luxury



Privacy glass*

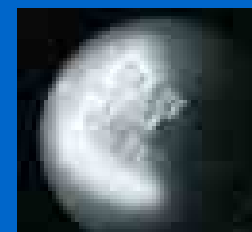
Luxury

- Leather seat trim
- 14" 5x2-spoke alloy wheels
- Remote central locking
- CFC-free air conditioning
- 'Quickclear' heated front windscreen
- Electrically-operated and heated door mirrors
- Chrome-effect radiator grille
- Chrome exhaust trim
- Headlining storage net (not available with sunroof)
- Carpet Mats
- Variable intermittent front wipers
- Reverse gear automatic rear wiper

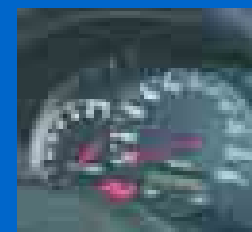
Interior shown is Luxury with leather in Sage and Reflex Pack (option at extra cost)

*Optional, at extra cost.

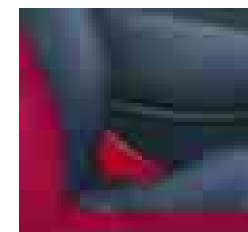
Sportka SE



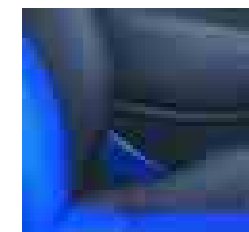
Alloy gear knob.



Sports dials.



Leather in Infra Red
Sportka SE



Leather in Racing Blue
Sportka SE



16" 6-spoke alloy
Sportka SE

Sportka SE

- 16" 6-spoke alloy wheels
- Anti-lock brakes (ABS)
- Perimeter Alarm
- (Thatcham Approved Category 1)
- Sports-style front seats (Dual colour, leather trimmed)
- CFC-free air conditioning
- Electronically-operated and heated door mirrors
- 'Quickclear' heated front windscreen
- Leather-trimmed steering wheel
- Front driver's airbag
- Machined aluminium gear knob
- Body colour door mirror housings
- Front fog lights
- Twin rear fog lights and centrally-mounted rear reversing light
- Remote central locking

Interior shown is Sportka SE with perforated leather in Racing Blue and Reflex Pack (option at extra cost)

*Note: A child seat should never be placed on the front passenger seat when the Ford vehicle is equipped with an operational front passenger's airbag. The safest place for children is properly restrained on the rear seat.

The finishing touch

Looking for that special finishing touch? You'll find all that you need – and more – in the Ford Ka range of accessories. From dynamic bodystyling features that help you stand out from the crowd, to items designed to make every drive more enjoyable. If you are interested in seeing the complete range of accessories, please speak to your local Ford Dealer.



Chrome-effect front grille
Chrome-effect front grille insert.
Gives your car a sportier look.
(Accessory)



Stainless steel exhaust trim
Stainless steel exhaust trim.
Easily fitted to the tail pipe.
(Accessory)



Gear shift knob and handbrake cover
Unique sporty gear shift knob and handbrake cover with aluminium design. (Accessory)
B-pillar decal
Black gloss B-pillar decal with distinctive 'Ka' logo. (Accessory)



Premium velour floor mats
Elegant, high-quality velour mat with 'Ka' logo. Driver's mat is fixed to prevent slippage and interference with pedals. (Option and accessory)
Eibach suspension-lowering kit
The Eibach suspension-lowering kit enhances driving performance and handling as well as giving a more sporty appearance. Lowers the car by 30 to 40 mm. (Accessory)



Vehicle shown with body colour rear spoiler, B-pillar decals, parking distance sensors, stainless steel exhaust and 14" 8-spoke 'Minilite' alloy wheels.
To see more examples of our range of stylish alloy wheels available for the Ford Ka, please turn to page 39.



To us, environmental care comes naturally



3_KA_M_LC_10187

Care for the environment is one of Ford's oldest concerns. Long before it became fashionable or required by law, we were questioning established practices and searching for better, more efficient alternatives. Like so much of our philosophy, the concept of sustainability dates right back to our founder, Henry Ford, a man who could not abide unnecessary waste.

Driving into the future

Lighter, quieter, and using less fuel with lower emissions, today's Ford engines create less impact on the environment than ever before. Our smooth, quiet and economical passenger car diesel engines comply with the strict Euro IV-emissions regulations while, at the same time, improve the overall performance. Indeed, our new Galaxy 2.0 Duratorq TDCi 140 PS diesel engine develops higher torque than its predecessor, while producing even less carbon dioxide (CO2) emissions.

A natural approach to alternative fuel

Imagine a car that runs on renewable fuel derived from sugar beet, cereal or wood shavings. Impossible? Then think again. Ford has been successfully selling the Focus Flexi-Fuel in Sweden since 2001, where sales now account for 80% of all Focus models sold. The 1.8-litre car, which can run on petrol, bioethanol, or a mixture of the two, offers a 70% reduction in carbon dioxide emissions compared to a petrol model, without any loss in performance. Because bioethanol fuel is plant-based, the CO2 emitted at the tailpipe is broadly equal to the CO2 absorbed while the plants were growing.

Recycling for good

Legend has it that Henry Ford used timber from old packing cases to build floors for the Model T. Today, the average Ford vehicle includes more recycled material than ever. Across our European vehicle range, more than 300 parts are made from recycled non-metallic materials. This helps to safeguard raw materials and diverts unwanted waste from landfill sites. Combined, our use of parts manufactured from recycled and renewable materials kept almost 35,000 tonnes* of waste out of landfills.

*2004 figures.

A breath of fresh air

In our bid to provide the healthiest car interiors possible, the Ford Focus and Focus C-MAX, along with the new Ford S-MAX and Galaxy, were the first cars worldwide to receive the 'Allergy-Tested Interior' seal of approval from the TÜV; the German independent testing and assessment organisation. Not only that, but the certification has also been confirmed by the British Allergy Foundation. By combining materials that are free from harmful emissions, together with pollen and dust filters, the interiors provide the perfect allergy-friendly environment for sufferers of asthma, hay fever or contact allergies, such as eczema.

When less means more

What impact does a new vehicle have on air quality over its lifetime? How much noise will it produce when it drives down the street? Using a new tool called the Product Sustainability Index, Ford is taking a leading role by addressing the environmental, social and economic impact of its vehicles from the early stages of their development. As one of the key issues facing society in the 21st century, sustainable development presents an enormous global challenge and reinforces our message that 'business as usual' is not an option.

Technical Data

Exterior dimensions

	Ka	Sportka SE
Overall length	3620	3650
Overall length without mirrors	1639	1656
Overall width with mirrors	1827	1827
Unladen height	1385-1413	1409-1431
Wheelbase	2448	2448
Front track	1395	1417
Rear track	1411	1393

Interior dimensions

	Ka	Sportka SE
Front (mm)		
Effective headroom	992	992
Maximum effective leg room	1036	1036
Shoulder room	1307	1307
Rear (mm)		
Effective headroom	922	922
Maximum effective leg room	839	839
Shoulder room	1279	1279
Stowable luggage (litres)*		
4-seat mode	186/210	186/210
2-seat mode (laden to roof)	724	724

* Measured using the VDA method. Dimensions may vary dependent on the model and equipment fitted.

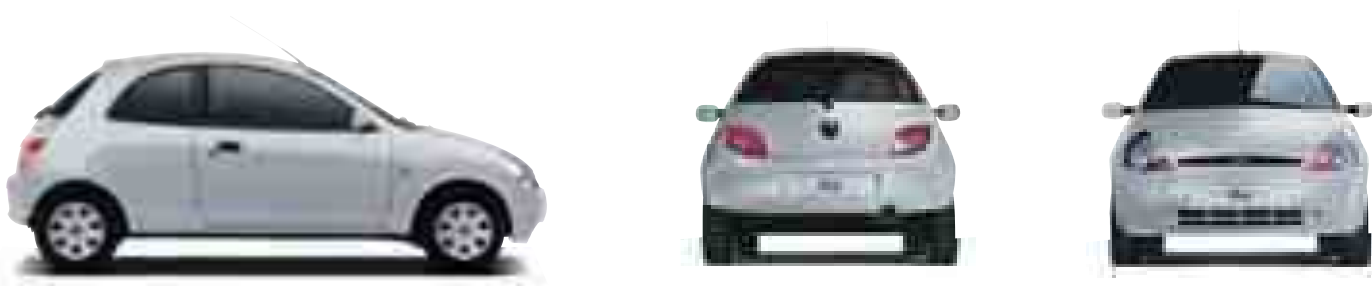
Engine data

	Engine technical features	Maximum power [°]	Maximum torque [°]
1.3 Duratec 1297 cc	4 cylinders in line; SOHC; 8 valves; electronic multipoint fuel injection	51 kW (70 PS) at 5500 min ⁻¹ (rpm)	106 Nm at 3000 min ⁻¹ (rpm)
1.6 Duratec 1597 cc	4 cylinders in line; SOHC; 8 valves; electronic multipoint fuel injection	70 kW (95 PS) at 5500 min ⁻¹ (rpm)	135 Nm at 4250 min ⁻¹ (rpm)

° Tested in accordance with ISO 1585.

Fuel, performance and emissions

	CO ₂ (g/km) ^{°°}	Fuel Consumption L/100 km (mpg) ^{°°}			Performance [°]		
		Urban	Extra Urban	Combined	Max. speed km/h (mph)	0-62 mph 0-100 km/h (secs)	31-62 mph 50-100 km/h* (secs)
Ka							
1.3 Duratec (70 PS no AC)	147	8.4 (33.6)	4.9 (57.6)	6.2 (45.6)	167 (104)	14.1	16.8
1.3 Duratec (70 PS with AC)	154	8.9 (31.7)	5.1 (55.4)	6.5 (43.5)	167 (104)	13.7	15.2



Fuel, performance and emissions

	CO ₂ (g/km) ^{°°}	Fuel Consumption L/100 km (mpg) ^{°°}			Performance [°]		
		Urban	Extra Urban	Combined	Max. speed km/h (mph)	0-62 mph 0-100 km/h (secs)	31-62 mph 50-100 km/h* (secs)
Sportka SE							
1.6 Duratec	182	10.4 (27.2)	6.0 (47.1)	7.6 (37.2)	174 (108)	9.7	10.5

* In 4th gear. °Ford test figures. °°All CO₂ emissions figures in g/km and fuel consumption figures in L/100 km (mpg) are from officially approved tests in accordance with EEC Directive 1999/100/EC. The CO₂ emissions and fuel consumption test figures shown in the chart do not express or imply any guarantee of the emissions or fuel consumption of a car of the class in question. All the figures are based on tests conducted on vehicles with standard wheels and tyres; optional or accessory wheels and tyres may have an effect on the emissions and fuel consumption of a vehicle. **Note:** All vehicles are 5-speed manual.

Model availability and weights

	Kerbweights (kg)*							
	Studio	Style	Style Climate	Zetec	Zetec Climate	Luxury	Sportka SE	Gross Vehicle Mass (kg)
1.3 Duratec	887	898	898	905	905	911		1265
1.6 Duratec							944	1300

* Represents the lightest kerbweight assuming full fluid levels and 90% fuel levels, subject to manufacturing tolerances and options, etc., fitted. **Note:** All vehicles are 5-speed manual.

Mechanical features

	Studio	Style	Style Climate	Zetec	Zetec Climate	Luxury	Sportka SE
Brakes							
Diagonally-split, with dual-line servo-assistance	●	●	●	●	●	●	●
Solid front discs, rear drums	●	●	●	●	●	●	
Ventilated front discs, rear drums							●
Anti-lock brakes	●	●	●	●	●	●	●
Fuel tank							
40.0 litres	●	●	●	●	●	●	●
Steering							
Power-assisted rack-and-pinion (variable ratio)	●	●	●	●	●	●	●
Suspension and body							
Front – Independent with MacPherson struts, and sub-frame mounted ‘A’ arm. Anti-roll bar	●	●	●	●	●	●	●
Rear – Twist-beam semi-trailing coil springs	●	●	●	●	●	●	●
Towing eye – Screw-in front	●	●	●	●	●	●	●
Turning circle							
Kerb to kerb – 9.9 m	●	●	●	●	●	●	
Kerb to kerb – 11.1m							●

● = Standard.

Safety and security

	Studio	Style	Style Climate	Zetec	Zetec Climate	Luxury	Sportka SE
Airbag – Driver’s	●	●	●	●	●	●	●
Airbag – Front passenger’s*	□	□	□	□	□	□	□
Airbag – Front passenger’s* and driver’s side airbags	□	□	□	□	□	□	□
Airbag – Front passenger’s* airbag deactivation switch	□	□	□	□	□	□	□
Fuel cut-off inertia switch	●	●	●	●	●	●	●
Side impact door beams. Steel safety cage with engine compartment cross beam. Energy absorbing crumple zones, front and rear	●	●	●	●	●	●	●
Steering column lock	●	●	●	●	●	●	●

Safety and security

	Studio	Style	Style Climate	Zetec	Zetec Climate	Luxury	Sportka SE
Immobiliser – Passive Anti-Theft System (PATS)	●	●	●	●	●	●	●
Alarm – Perimeter				○	○	○	
Alarm – Interior scan and perimeter (CAT 1 Thatcham approved)							●
Security features with 6000 or 6006 audio fitted. Removable audio control bezel panel ‘Keycode’ anti-theft coding	●	●	●	●	●	●	●
Locks – Central locking		●					
Locks – Remote control central locking			●	●	●	●	●
Locking wheel nuts				●	●	●	●
Fuel cap – Locking	●	●	●	●	●	●	●
Vehicle Identification Number (VIN) – Visible	●	●	●	●	●	●	●

● = Standard, ○ = Optional, at extra cost, □ = Part of option pack, at extra cost.
*Note: A child seat should never be placed on the front passenger seat when the Ford vehicle is equipped with an operational front passenger’s airbag. The safest place for children is properly restrained on the rear seat.

Wheel availability

	Studio	Style	Style Climate	Zetec	Zetec Climate	Luxury	Sportka SE
Low Rolling Resistance (LRR) tyres	●	●	●	●	●	●	●
13" steel with full wheelcovers and 165/65 R13 tyres	●	●	●				
14" 5x2-spoke alloy (13" steel temporary spare ^a) with 165/60 R14 tyres						●	
14" 8-spoke alloy (13" steel temporary spare [#]) with 165/60 R14 tyres				●	●		
16" 6-spoke alloy (14" steel temporary spare ^a) with 195/45 R16 tyres							●
14" 6-spoke alloy (13" steel temporary spare ^a) with 165/60 R14 tyres		○	○				

● = Standard, ○ = Optional, at extra cost.
*Note: If the spare wheel rim or tyre size differs from the other wheels fitted: **DO NOT** drive in excess of 50 mph (80 km/h). **DO** drive the least possible distance.

Exterior features

	Studio	Style	Style Climate	Zetec	Zetec Climate	Luxury	Sportka SE
Styling							
Colour toned bumpers and tailgate handle – Torque Grey	●						
Bumpers and tailgate handle – Body colour with black tailgate handle		●	●	●	●	●	●
Door handles – Black	●	●	●	●	●	●	●
Exhaust trim – Chrome						●	
Paint – Metallic	○	○	○	○	○	○	○
Radiator grille – Chrome-effect						●	
Radiator grille – Wire Mesh							●
Spoiler – Roof				●	●		●
Functional							
Aerial – Roof-mounted	●	●	●	●	●	●	●
Door mirrors – Manual internal control, black housings	●						
Door mirrors – Manual internal control, body colour housings		●		●			
Door mirrors – Electrically-operated and heated, body colour housings			●		●	●	●
Heated front windscreen – ‘Quickclear’			●		●	●	●
Heated rear window	●	●	●	●	●	●	●
Park Assist – Rear sensors		○	○	○	○	○	
Privacy glass – Dark tinted		○	○	○	○	○	○

Exterior features

	Studio	Style	Style Climate	Zetec	Zetec Climate	Luxury	Sportka SE
Wipers – Front 2-speed plus intermittent and auto wash-wipe function	●	●					
Wipers – Tailgate wiper	●	●					
Wipers – Front 2-speed plus variable intermittent, auto wash-wipe function and wipe after wash			●	●	●	●	●
Wipers – Tailgate wiper + reverse gear wipe function			●	●	●	●	●
Lights							
Halogen headlights, side lights, rear fog light, reversing light, high-mounted rear brake light	●	●	●	●	●	●	
Halogen headlights, side lights, twin rear fog lights, centrally mounted rear reversing light, high-mounted rear brake light							●
Fog lights – Front							●

● = Standard, ○ = Optional, at extra cost.

Audio and communication systems

	Studio	Style	Style Climate	Zetec	Zetec Climate	Luxury	Sportka SE
Stereo AM/FM radio/cassette – Model 2050 RDS EON, colour-coordinated with instrument panel bezel, removable control panel, ‘Keycode’ anti-theft coding, 2 speakers	●						
Stereo radio/CD – Model 6000 RDS EON, colour-coordinated with instrument panel bezel, removable control panel, ‘Keycode’ anti-theft coding, 2 speakers		●	●	●	●	●	●
Stereo radio/CD autochanger – Model 6006 RDS EON, 6-disc in-dash CD autochanger, colour-coordinated with instrument panel bezel, removable control panel, ‘Keycode’ anti-theft coding, 2 speakers				○	○	○	○

● = Standard, ○ = Optional, at extra cost.

Interior features

	Studio	Style	Style Climate	Zetec	Zetec Climate	Luxury	Sportka SE
Comfort and convenience							
Air conditioning – CFC-free			●		●	●	●
Clock – Analogue, White facia with medium grey metallic surround	●	●	●	●	●	●	
Clock – Analogue, Cosmos facia with silver surround							●
Storage – Passenger’s side glovebox	●	●	●	●	●	●	●
Storage – Passenger side upper stowage recess with non slip mat	●	●	●	●	●	●	●
Storage – Driver side stowage recess	●	●	●	●	●	●	●
Storage – Trinket recess in carpet in front of gear lever	●	●	●	●	●	●	●
Cup/can holders – Driver’s and front passenger’s door	●	●	●	●	●	●	●
Storage – Headlining storage net (not available with sunroof)	●	●	●	●	●	●	●
Cup/can holders – Two cup/can storage recesses in rear carpet	●	●	●	●	●	●	●
Storage – Deep, rear passenger bin with lid	●	●	●	●	●	●	●
Smokers Pack	○	○	○	○	○	○	○
Sunroof – Electrically operated tilting and sliding		○	○	○	○	○	○
Sunvisors – Two with mirror and ticket strap on driver’s side	●	●	●	●	●	●	●
Windows – Electrically-operated front windows		●	●	●	●	●	●
Windows – Opening rear vents	●	●	●	●	●	●	●

Interior features

	Studio	Style	Style Climate	Zetec	Zetec Climate	Luxury	Sportka SE
Seats and seat belts							
Front seats – Standard, Fully reclining, anti-submarining with height-adjustable head restraints	●	●	●	●	●	●	
Front seats – Sports-type, fully reclining, anti-submarining with height-adjustable head restraints							●
Front seat – Driver’s height adjustable seat				●	●	●	●
Rear seat – Head restraints				●	●	●	●
Rear seat – 50:50 split back	●	●	●	●	●	●	●
Seats – Leather-trimmed with colour-coordinated vinyl door trim insert						●	
Seats – Dual colour leather-trimmed seats with ebony vinyl insert with colour-coordinated stitching vinyl door trim insert							●
Storage net – Net on front passenger seatback				●	●		
Storage pockets – Map pocket on front passenger seatback and storage pouch on driver seat cushion (included on Studio, Style, Style Climate, Zetec and Zetec Climate only where Reflex Pack is fitted)	□	□	□	□	□	●	●
Seat belts – Front, inertia reel, with grabbers	●	●	●	●	●	●	●
Seat belts – Rear, two inertia reel	●	●	●	●	●	●	●
Carpet and trim							
Carpet – Black	●	●	●	●	●	●	●
Door trim – Colour-coordinated fabric insert, moulded panel with pull handle/armrest, door bins with cup/can holders and integrated speakers	●	●	●	●	●		
Door trim – Colour-coordinated vinyl insert, moulded panel with pull handle/armrest, door bins with cup/can holders and integrated speakers						●	
Door trim – Ebony vinyl insert with colour-coordinated stitching, moulded panel with pull handle/armrest, door bins with cup/can holders and integrated speakers (only available with Dual colour leather-trimmed seats)							●
Front carpet mats with Sportka logo							●
Front carpet mats – Environment colour-keyed Ka logo						●	
Gear knob – Leather-trimmed and with environment colour-keyed insert				●	●	●	
Gear knob – Machined alloy							●
Gear shift gaiter – Environment colour-keyed	●	●	●	●	●	●	●
Instrument panel bezel – Polar Grey (Ebony environment)	●	●	●	●	●	●	
Instrument panel bezel – Liquid Sage metallic (Sage environment)		●	●	●	●	●	
Instrument panel bezel – Cosmos Grey							●
Scuff plates – Bright finish with Ka logo				●	●	●	●

Interior features

	Studio	Style	Style Climate	Zetec	Zetec Climate	Luxury	Sportka SE
Instruments and controls							
Instruments – Speedometer, electronic digital odometer, fuel gauge	●	●	●				
Instruments – Speedometer, electronic digital odometer, fuel gauge, tachometer				●	●	●	●
Silver dials and black graphics	●	●	●	●	●	●	
Cosmos dials with white graphics							●
Instrument panel – Ebony (Ebony environment)	●	●	●	●	●	●	●
Instrument panel – Sage (Sage environment)		●	●	●	●	●	
Warning indicators for low fuel, oil pressure, engine temperature, direction indicators, high beam, ignition/alternator, low brake fluid/handbrake on, airbag(s), anti-lock brakes, ‘lights on’ audible warning	●	●	●	●	●	●	●
Passenger Airbag Deactivation Switch	□	□	□	□	□	□	□
Illuminated heater controls – 4-speed fan. Four vents with temperature and direction control	●	●	●	●	●	●	●
Control stalks – Column-mounted for master lights, indicators and wash/wipe functions	●	●	●	●	●	●	●
Steering wheel – Two-spoke incorporating blue Ford oval and horn function	●	●	●				
Steering wheel – Leather-trimmed incorporating blue Ford oval and horn function				●	●	●	●
Tailgate release – Interior power release		●	●	●	●	●	●
Lighting							
Courtesy light – Header-mounted, door-operated	●	●	●	●	●		
Courtesy light – Header-mounted, door-operated + theatre dimming						●	●
Light – Luggage compartment						●	●
Luggage compartment							
Carpet – Floor only	●	●	●	●	●		
Carpet – Floor with sidewall trims						●	●

● = Standard, ◯ = Optional, at extra cost, □ = Part of Option pack.

Option packs at extra cost

	Studio	Style	Style Climate	Zetec	Zetec Climate	Luxury	Sportka SE
Reflex Pack – Front passenger airbag* , driver’s and front passenger’s side airbags, passenger airbag deactivation switch	◯	◯	◯	◯	◯	◯	◯

◯ = Optional, at extra cost. ***Note: A child seat should never be placed on the front passenger seat when the Ford vehicle is equipped with an operational front passenger’s airbag. The safest place for children is properly restrained on the rear seat.**

Larger glovebox

Ford Ka’s glovebox has been redesigned to give you more space for all those little things you need to keep handy.



Aluminium gear knob

The smooth, sports-style gear knob adds a touch of chic (standard on Sportka SE).



Accessory wheel

14" 6-spoke alloy*



Accessory wheel

14" 8-spoke ‘Minilite’ alloy*



Accessory wheel

14" ‘star’ design alloy*



Accessory wheel

14" 3-spoke alloy*



A shade different

Choose from a range of vibrant
body colours to suit your personality

