

The Government fuel figures do not express or imply any guarantee of the fuel consumption of any particular car. The cars themselves have not been tested and there are inevitable differences between individual cars of the same model. In addition, a car may incorporate particular modifications. Furthermore, the driver's style and road and traffic conditions, as well as the extent to which the car has been driven and the standard of maintenance, will affect its fuel consumption. **Insurance groups** are only as recommended by the Association of British Insurers. You should always consult your insurance adviser for confirmation. **Illustrations, descriptions and specifications.** This catalogue was correct at the time of going to print. However, Ford policy is one of continuous product development. The right is reserved to change specifications, colours and prices of the models and items illustrated and described in this publication at any time. For the latest details always consult your Ford Dealer. **Optional equipment.** Throughout this publication, wherever a feature is described as being an 'Option' or 'Optional Fitment/Pack', etc., you should assume that it will be at extra cost to the base vehicle, unless specifically stated to the contrary. All models and colour combinations are subject to availability. ***Ford Information Service.** Calls are charged at national rate and may be recorded for training purposes. **Note** Some images portrayed are of a pre-production model and/or are computer generated, therefore, the design/features on the final version of the vehicle may differ in various respects. In addition, some of the features shown on the vehicles may be optional. This brochure contains both original Ford accessories as well as a range of carefully selected products from our suppliers, which are featured under their own brands. All supplier branded products are subject to warranty terms defined by the relevant suppliers and do not lie within the responsibility of Ford. **Note** The Bluetooth® word mark and logos are owned by the Bluetooth SIG, Inc. and any use of such marks by Ford Motor Company Limited and its associated companies is under licence. Other trademarks and trade names are those of their respective owners.

Collect Nectar points at participating Ford Dealers now.
So keep a look out for the latest Ford offers at
www.ford.co.uk/nectar or call the Ford Information
Service on 0845 7111 888.*

Ford recommends BP.

Allergy-tested interior All materials used in the manufacture of the interior of this vehicle meet the strict requirements of the TÜV TOXPROOF Criteria Catalogue for Vehicle Interiors by the TÜV Produkt und Umwelt GmbH and are designed to minimise the risk of allergic reactions. With doors and windows closed, the interior materials selected – together with the integrated pollen filter – protect the passengers against most allergising particles from the outdoor air. At higher temperatures, the additional use of air conditioning is recommended.

Published by Ford Motor Company Limited,
Brentwood, Essex, England.
Registered in England No. 235446.
FA 1465/7.
BJN 303964. FoE H06E.
PN 775504/0108/40m/GBR en.
January 2008.
© Ford Motor Company Limited.

www.ford.co.uk



FordC-MAX



06:00

The element of surprise

The fun is in letting them think they've won.



Keep up with your kids

There's no doubt about it. Having kids will keep you on your toes. They're so full of energy. Always on the move. Dancing, climbing, playing games. You get the idea. Of course, you'll need more than fancy footwork to keep up. That's where the agile new Ford C-MAX comes in. With its fresh styling, resourceful interior and invigorating driving experience, it has something to keep the whole family happy. Even on the most action-packed day.

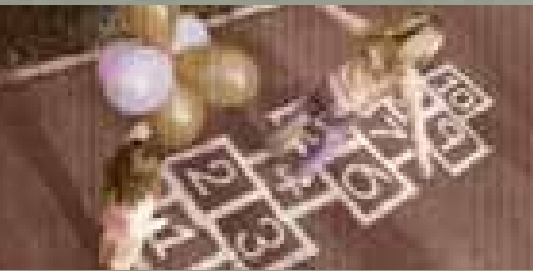


07:30

Stance

A wide track, both front and rear, makes the Ford C-MAX feel safe, stable and rewarding to drive.





Natural agility

Control Blade independent rear suspension, combined with an ultra-stiff bodyshell and wider track, provides agile handling and superb ride comfort.

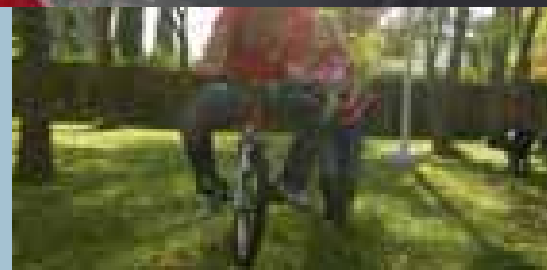
11:15



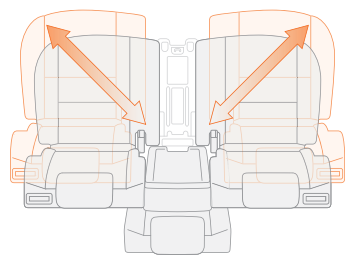
12:30

Balance

Nimble and agile with its Electric Hydraulic Power-Assisted Steering*, the Ford C-MAX responds instantly to your every command.



*All engines except 1.6 Duratec petrol.



Versatile

Wherever life takes you, there's no more enjoyable way of making the journey than in a Ford C-MAX. Great to look at, rewarding to drive and with an incredibly versatile and accommodating interior, this unique car has it all.

14:00

Simple multiplication

Two seats or three? Four? Maybe five?
Adapting the Ford C-MAX to fit your family is as simple as child's play.





Sunglasses holder

Handy driver's-side stowage for your sunglasses. (Standard on Style, Zetec and Titanium)



Facia-top stowage

Lidded compartment on the front passenger side for safe keeping of maps and papers.



Centre console stowage

Holds one 1.5-litre bottle or up to nine 33 cl cans. Sliding centre armrest adjusts for maximum comfort, regardless of the seat position. (Titanium only)



Flexible seating and underfloor stowage

Useful underfloor stowage compartments are located in front of the rear seats. Ideal for keeping personal items out of view.



Power converter

Handy 230V power converter makes your mobile phone, laptop, digital camera, PSP or PDA even more portable. (Option on Style, Zetec and Titanium. Available only with premium centre console)



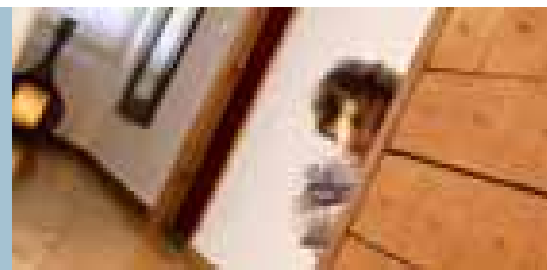
Surprise!

In designing the Ford C-MAX, we included everything that you would like to discover in your next new car. And then added things you probably hadn't even thought of.

16:00

Hide and seek

Keep your possessions out of sight with the Ford C-MAX's secret hiding places.





16:30

In safe hands

With a 4-star Euro NCAP rating for child protection*, the Ford C-MAX doesn't take safety for granted.

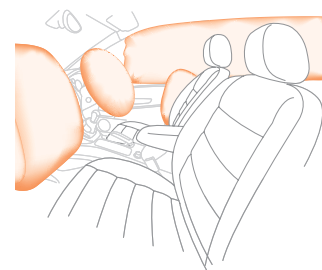
The Ford C-MAX Intelligent Protection System includes:

- Driver and front passenger's airbags*
- Driver and front passenger's side thorax airbags
- Side curtain airbags for both front and outer rear passengers

Further safety features include:

- Computer-optimised body structure with ultra-rigid safety cell and crumple zones
- Advanced lap and diagonal inertia reel seat belts with pre-tensioners and load-limiting retractors on all seats, and front seat height-adjustable mounts
- ISOFIX child seat mountings
- Anti-submarining seat bases
- Electrically-operated windows with 'bounce-back' anti-trap feature
- Allergy-tested interior, endorsed by TÜV and awarded the British Allergy Foundation's 'Seal of Approval' for its allergy-friendly properties

***Note: A child seat should never be placed in the front passenger seat when the Ford vehicle is equipped with an operational front passenger's airbag. The safest place for children is properly restrained on the rear seat.**



Instinctive

Safety is an integral part of car design, so the Ford C-MAX benefits from an ultra-stiff body structure and a reinforced passenger safety cell.

A large windscreen and elevated seating positions provide a better view of the road ahead, while accurate steering and a responsive chassis help you to avoid obstacles in the first place.

Advanced seat belts help to protect each occupant and are supplemented by front*, side and curtain airbags that activate in milliseconds for all-round passenger security.

*Tested in conjunction with a forward-facing Britax Römer Duo Plus and a rear-facing Britax Römer BabySafe Plus child seat.



18:00

Look to the stars

Early explorers steered by the stars. Thankfully, the latest satellite navigation technology means you can discover new lands any time, night or day.



Navigate

Route-planning is an important part of every journey. And even if you already know the way, traffic jams and roadworks can mean a change of route or an unwelcome delay.

Ford's latest satellite navigation systems use real-time information to help you reach your destination safely and efficiently. Easy to use and programmed with routes throughout Europe, they are as important on a short cross-city hop as on the longest road trip.

Combined with powerful audio performance, you'll be at your destination before you know it.



Out of this world

Panoramic Solar Reflect roof floods the car with light – or lets you take in the night sky – while blocking solar radiation to help keep the interior cooler. (Optional on Style, Zetec and Titanium)

Clean sweep

A rain sensor activates the windscreen wipers automatically if it starts to rain, cleverly adjusting the wiper interval to match the amount of rainfall. (Standard on Titanium)



The ultimate travelling companion

Premium Touchscreen DVD navigation system featuring a 7" full-colour touch-screen display and easy-to-follow audio-visual directions. Includes Sony CD/MP3 audio system, climate system controls, and eight premium speakers. (Optional on Zetec and Titanium. Includes DEATC air conditioning and heated front seats)



Keep on the right road

The Advanced CD-SD navigation system offers route guidance and CD/tuner in one. Features a 5" full-colour display with colour map, turn-by-turn instructions to your destination. You can even play MP3 files direct from your memory card for enhanced sound quality. Also includes SD memory card slot for data exchange or map data, remote audio controls and six speakers. (Optional on Style, Zetec and Titanium)



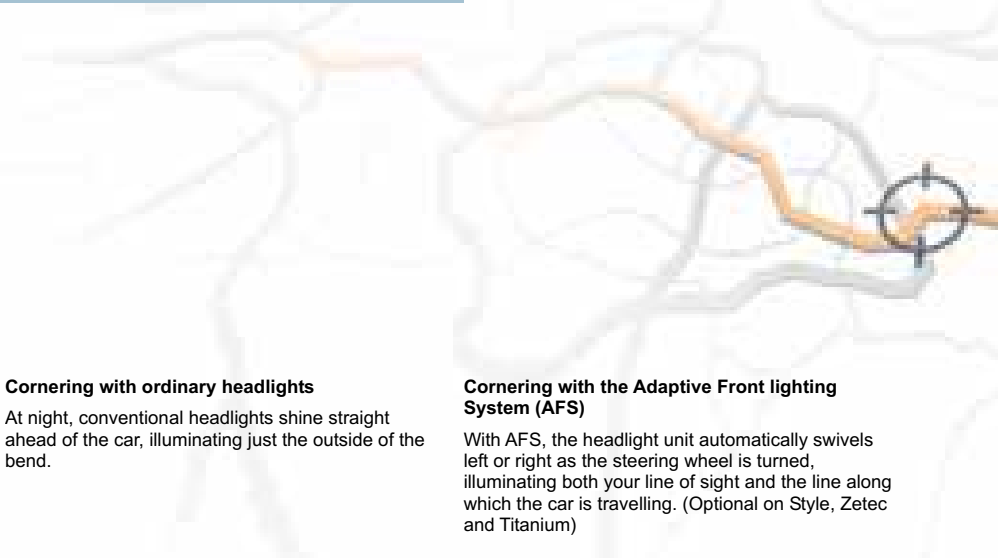
Seeing is believing

Most accidents happen at night, so the Ford C-MAX is available with a range of powerful lighting options. From high-performance halogen headlights to bi-xenon units that produce around twice as much light as conventional bulbs, and a halogen-based Adaptive Front lighting System (AFS), which swivels the headlights as the car negotiates bends, you will see and be seen whenever you drive.



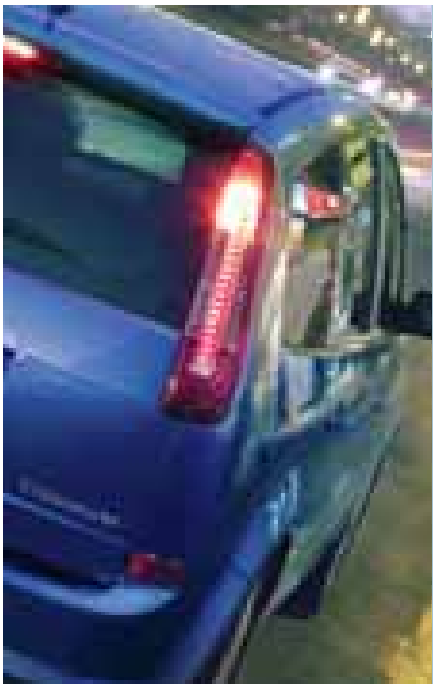
The eyes have it
Carrots may help you see in the dark, but the Ford C-MAX employs the very latest lighting technology for an even more illuminating drive.

19:00



Stand out

Stylish new LED rear lights are lighting technology at its most eye-catching.



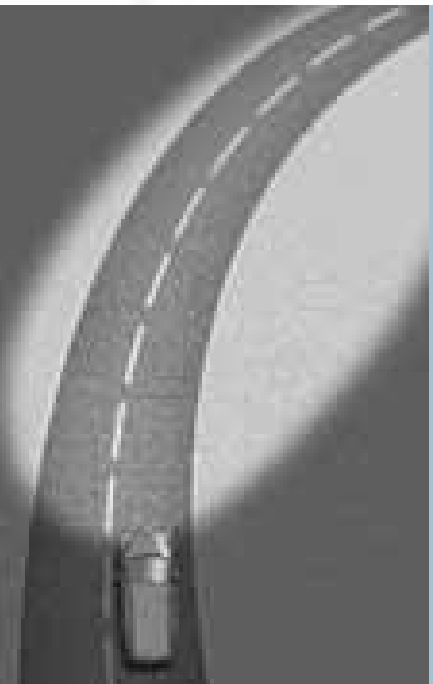
Cornering with ordinary headlights

At night, conventional headlights shine straight ahead of the car, illuminating just the outside of the bend.



Cornering with the Adaptive Front lighting System (AFS)

With AFS, the headlight unit automatically swivels left or right as the steering wheel is turned, illuminating both your line of sight and the line along which the car is travelling. (Optional on Style, Zetec and Titanium)



Energy

Like you, your car needs to be able to respond to new challenges quickly and effectively, as and when they arise. So the Ford C-MAX is offered with a choice of dynamic and efficient engines.

From the smooth and responsive 1.6 Duratec engine, to the state-of-the-art 2.0 Duratorq TDCi diesel that develops an impressive 340 Nm* of torque, and the environmentally-friendly 1.8 Duratec Flexifuel engine, which runs on E85 bio-ethanol or petrol, each engine in the range underlines our belief in combining driving quality with refinement.

Equally responsive is the new Ford PowerShift advanced dual-clutch gearbox that combines the ease of an automatic transmission with the responsiveness of a manual. What really sets it apart is its ability to shift gears almost seamlessly and without interrupting the drive of the engine. This eliminates the usual conflict between sportiness, convenience and economy, leaving you to enjoy an uncompromised driving experience. (Option with 136 PS and 110 PS 2.0 Duratorq TDCi engines)

*With transient overboost.



Driving pleasure

Diesel or petrol, sporty or relaxed, it's amazing how the Ford C-MAX can accommodate both your needs and your driving style.



09:00



Make yourself heard

Converse with friends, family and your car, all at the sound of your voice.

10:00

Sony audio

Sony 6CD RDS EON stereo radio/6-disc in-dash CD autochanger features MP3 playback capability via portable music connection socket or optional USB port located between the two front seats. Also available with DAB digital radio technology*.

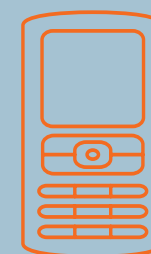
(Option)

*Available from Summer 2008.



Communicate

Distance should not be a barrier to effective communication. So the Ford C-MAX is available with Bluetooth®, ingenious technology that lets you make and receive calls, even with your phone in the boot. And Voice Control that allows you to operate the entertainment, navigation and climate systems without taking your hands off the steering wheel.



Bluetooth® technology

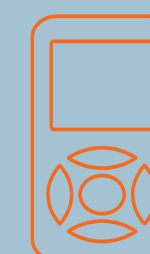
Bluetooth® wireless connectivity lets you make and receive calls using a compatible mobile phone, without a cable or headset in sight. (Option)



Voice Control

With voice-activated controls you can tell your Ford C-MAX exactly what to do. Change radio stations or CD track, make and receive calls using your Bluetooth® compatible mobile phone, control the DVD navigation system, access and control MP3 files via USB, and adjust the temperature or fan speed settings*. Speak and you will be obeyed.

(Voice control is available with optional Bluetooth. USB connectivity will be available as an option in Summer 2008)



MP3 connection

Connect your iPod or MP3 player and operate it via your Ford audio system (Standard). Connector wiring also available as an accessory.

*Requires Dual Electronic Automatic Temperature Control (DEATC) air conditioning.

Note The Bluetooth® word mark and logos are owned by the Bluetooth SIG, Inc. and any use of such marks by Ford Motor Company Limited and its associated companies is under licence. Other trademarks and trade names are those of their respective owners.

Note It is an offence for drivers to use a hand-held mobile phone or similar device while driving.



Style

With its vibrant and sporty design cues, the Ford C-MAX Style is an irresistible activity vehicle.

- Electronic Stability Programme
- Designer wheels
- Distinctive LED rear lights
- CD player
- Air conditioning
- Body colour power/heated door mirrors
- Body colour exterior door and tailgate handles
- Aluminium-finish interior design cues
- Music connection socket
- Trip computer
- Driver's seat with armrest and adjustable lumbar support
- Three individual 'Tip and Tumble' rear seats
- Folding seat back trays

Note Images may show optional equipment.





Zetec

The ultimate blend of style, sportiness and value can be discovered in the Zetec.

Additional to Style

- 16" 5-spoke 'Y-design' alloy wheels
- Front fog lights
- Privacy glass
- Quickclear heated windscreen
- 4-spoke leather-trimmed steering wheel
- Perimeter alarm

Note Images may show optional equipment.





On the prowl

Fabulous 17" multi-spoke alloy wheels are shod with wide 205/50 Rx17 tyres for tenacious grip.



Design style

Leather-trimmed gearshift knob adds a luxurious finishing touch.



Titanium

The modern interpretation of refinement and technology come together in the Ford C-MAX Titanium.

Additional to Zetec

- 17" multi-spoke 'machined' alloy wheels
- Sony single CD/MP3 player
- Blue-tinted glass ilo Privacy Glass
- Electrically-operated rear windows with anti-trap feature and global opening/closing
- Thatcham Category 1 alarm
- Autowipers, with rain sensor
- Automatic headlights
- Auto-dimming rear view mirror
- Leather-trimmed gearshift knob
- Body colour door mirrors with puddle lights and indicators
- Premium centre console with sliding armrest and 'Z' style handbrake
- Brushed chrome interior design cues

Note Images may show optional equipment.





Eibach suspension lowering kit

The Eibach suspension lowering kit gives your car a more sporty appearance, lowering the car by approximately 30 mm. (Accessory)



Gearshift knob and handbrake cover

Gearshift knob and handbrake cover with aluminium-effect inserts. (Accessory)



Scuff plates

Polished stainless steel scuff plates with recessed 'C-MAX' logo. (Accessory)



Luxury velour floor mats

Featuring an aluminium-effect 'C-MAX' logo. Made to perfectly complement your chosen interior with a touch of luxury. Driver's mat is fixed to prevent slippage. (Standard on Titanium, option on Style and Zetec, also available as accessory)



Rear Seat Stowage Box and Armrest

For vehicles with the optional Comfort Seat System this versatile stowage box and armrest fits neatly between the rear seats when in four seat mode. (Accessory)



Bodystyling kit

Why not give your C-MAX a purposeful stance with this bodystyling kit? Consisting of body-coloured front and rear bumper skirts, unique upper and lower front grille with chrome surrounds, special front fog light housings and door claddings. (Accessory.)

Rear spoiler shown is only available as an accessory.

Standard = Standard on your vehicle.
Option = Can be ordered only together with your new vehicle.
Accessory = Available from your Ford Dealer.

11:00

Look the part
 Some people just have it. Others wish they did. With the Ford C-MAX, you can convey whatever image you desire.



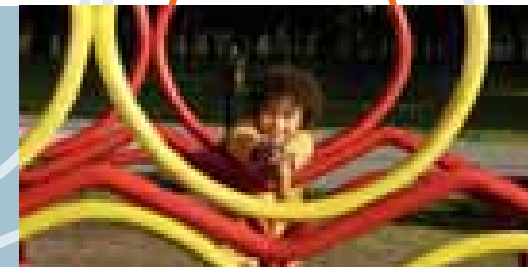
Style

Elegant or sporty, practical or luxurious? Add your own personality to the Ford C-MAX with a range of eye-catching and individual options and accessories.



Invent

Nothing finishes off a great-looking car better than a set of beautiful wheels. So the Ford C-MAX is available with a wide range of fabulous optional and accessory alloy wheels – as well as its carefully selected standard wheels – to help you create a look that is all your own.



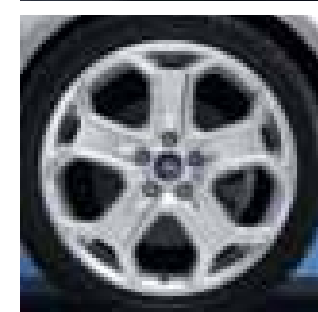
18" 10-spoke 'Y-design' alloy wheel (Accessory)



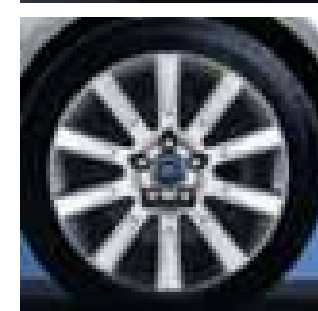
18" 7-spoke 'anthracite/machined' alloy wheel (Accessory)



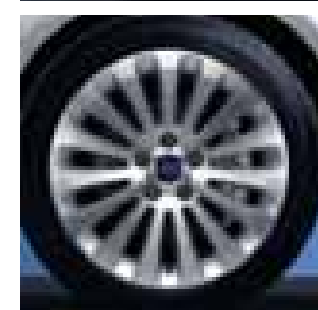
18" 5-spoke sport design alloy wheel - 6 (Option as part of Sport Pack on Titanium; also available as accessory)



17" 10-spoke 'machined' alloy wheel (Accessory)



17" multi-spoke 'machined' alloy wheel
(Standard on Titanium; also available as accessory)



16" 5-spoke 'Design' wheel
(Standard on Style)



16" 5-spoke 'Y' finish alloy wheel
(Standard on Zetec, part of Sport Pack on Style; also available as accessory)



16" 5-spoke alloy wheel
(Accessory)



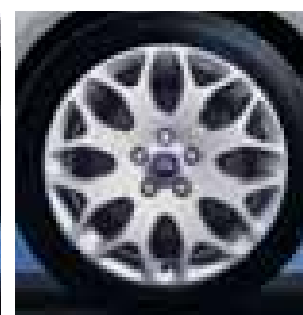
16" 5-spoke alloy wheel
(Accessory)



17" 5-spoke alloy wheel - 4
(Accessory)



17" 8-spoke alloy wheel.
(Option as part of Sport Pack on Zetec; also available as accessory)



17" 7x2-spoke alloy wheel
(Accessory)



17" 9x2-spoke 'machined' alloy wheel (Accessory)



Standard = Standard on your vehicle.

Option = Can be ordered only together with your new vehicle.

Accessory = Available from your Ford Dealer.

Mont Blanc 'Barracuda' bike carrier

Specially designed to carry modern bikes with frames up to 80 mm in diameter. Also features integral locks to keep bikes safe and secure. (Accessory)

Thule Deluxe Ski carrier

Elegant, fully-lockable ski carrier. Suitable for up to six pairs of skis or four snowboards. (Accessory)

Thule Ocean roof box

Different sized boxes protect your luggage from weather and theft. (Accessory)

Roof Base Carrier

Lockable cross bars, can be used alone, or in conjunction with any of the illustrated specialised transportation accessories. (Accessory)

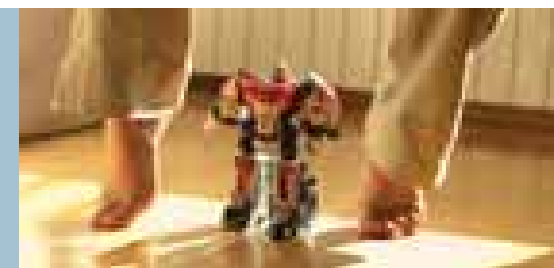
Britax Römer child seat

Various child seats available for all ages, also with ISOFIX. (Accessory)

13:00

Smart thinking

Top gear designed to make your life easier.

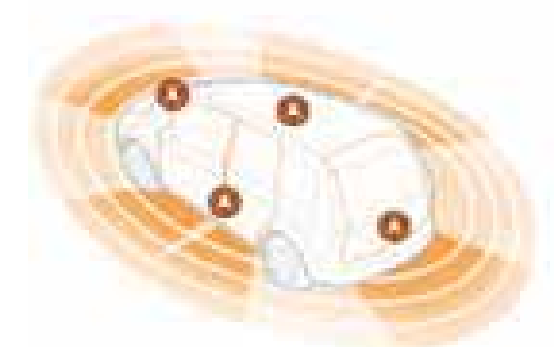


Transform

You've got your own activities. And so have your children. Now you can keep everyone happy with a choice of practical and stylish accessories, carefully designed to meet the diverse needs of your everyday life.

Ford CAT 1 alarm system upgrade

Fully-integrated security system monitors the vehicle's doors, bonnet and boot. Also features ultrasonic sensors to detect movement inside the vehicle. (Accessory)

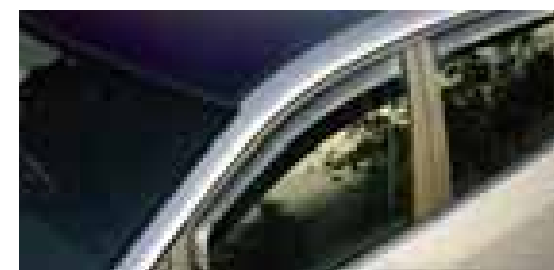


Detachable tow bar

For extra transport and stowage capability. Also available as a fixed version. (Option and accessory)

ClimAir® wind deflector

Reduces turbulence and noise, allowing you a more enjoyable drive with the front windows down, even when it's raining. (Accessory)

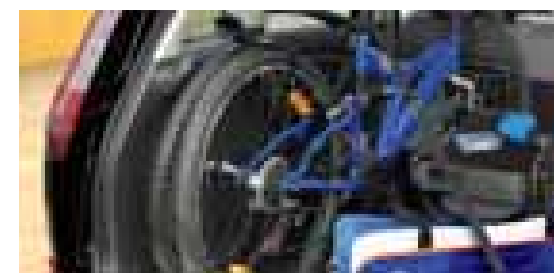


Contoured mudflaps

Available as sets for front and rear. (Accessory)

Interior bike rack

Enables you to securely transport up to two bikes inside your C-MAX. The securing strap is useful for securing luggage or other items in the luggage compartment. (Accessory)





Modular dog guard system

Half-height, full-height or full-height with luggage divider, this modular system keeps dogs or items of luggage safely in the luggage compartment. (All items available separately as accessories)

Loadspace liner

Durable liner, designed to keep the luggage compartment tidy, ideal for transporting wet or dirty items. The removable partition bars provide variable spacing for luggage. (Accessory)

Load barrier retention net

Keeps items safely in the luggage compartment, where they belong. Meets ECE-R17 safety requirements. (Accessory)



15:00

Smart stowage solutions

Leave nothing and no-one behind with the Ford C-MAX's innovative stowage solutions.



Transport

With its versatile and roomy interior, the agile Ford C-MAX will always measure up. Add a choice of specially designed interior transportation accessories and make maximum use of its adaptable space.

Luggage floor net

Elasticated net attaches securely to luggage compartment floor to restrict items of luggage from moving whilst driving. (Accessory)



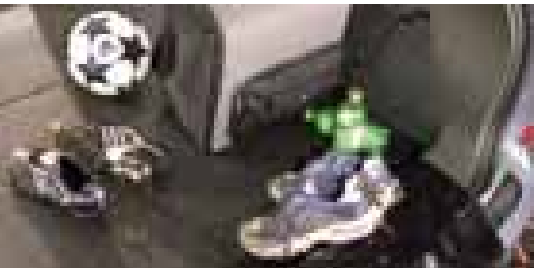
Anti-slip mat

Luggage compartment protection, moulded to fit perfectly into the vehicle. Incorporates anti-slip surface. (Accessory)



Reversible luggage compartment mat

Full-length mat provides luggage compartment protection, even with the rear seats removed. Reversible design offers choice of carpet with C-MAX logo, or durable rubber surface ideal for carrying wet or dirty items. Incorporates flap to protect rear bumper during loading. (Accessory)



Contour rubber mats

Branded with the 'C-MAX' logo. The driver's mat is fixed to prevent slippage. (Accessory)





Take your pick
Whatever you desire, you know you can't resist.

16:30

Can you keep up?

Combining maximum driving enjoyment with exceptional comfort and versatility, the agile Ford C-MAX spells the end of compromise. Beyond its dynamic new styling, and the quality and craftsmanship of its materials and finish, it positively bristles with energy. At last, a car that rewards the driver while carrying your family in comfort.

Ford Boutique mountain bike

For off-road and fun excursions, choose the Ford Boutique mountain bike, which features an 18-speed Shimano shift and a 26" frame. Order code F06-13-19.

Ford Boutique Festina watch

You'll always arrive on time with this attractive Ford Boutique Festina watch. Order code F05-11-10.

Ford Boutique polo shirt

High-quality cotton, 3-button polo shirt with discreet 'Ford' logo on the left breast. Sizes S, M, L, XL and XXL. Order code F03-4-2.





To us, environmental care comes naturally

Care for the environment is one of Ford's oldest concerns. Long before it became fashionable or required by law, we were questioning established practices and searching for better, more efficient alternatives. Like so much of our philosophy, the concept of sustainability dates right back to our founder, Henry Ford, a man who could not abide unnecessary waste.



Driving into the future

Lighter, quieter, and using less fuel with lower emissions, today's Ford engines create less impact on the environment than ever before. Our smooth, quiet and economical passenger car diesel engines comply with the strict Euro IV-emissions regulations while, at the same time, improve the overall performance. Indeed, our new Galaxy 2.0 Duratorq TDCi 140 PS diesel engine develops higher torque than its predecessor, while producing even less carbon dioxide (CO₂) emissions.

A natural approach to alternative fuel

Imagine a car that runs on renewable fuel derived from sugar beet, cereal or wood shavings. Impossible? Then think again. Ford has been successfully selling the Focus Flexi-Fuel in Sweden since 2001, where sales now account for 80% of all Focus models sold. The 1.8-litre car, which can run on petrol, bioethanol, or a mixture of the two, offers a 70% reduction in carbon dioxide emissions compared to a petrol model, without any loss in performance. Because bioethanol fuel is plant-based, the CO₂ emitted at the tailpipe is broadly equal to the CO₂ absorbed while the plants were growing.

*Dependent on feedstock used and production process (Source: EUCAR Concaawe study). Ford supports the sustainable production of biofuels.

Recycling for good

Legend has it that Henry Ford used timber from old packing cases to build floors for the Model T. Today, the average Ford vehicle includes more recycled material than ever. Across our European vehicle range, more than 300 parts are made from recycled non-metallic materials. This helps to safeguard raw materials and diverts unwanted waste from landfill sites. Combined, our use of parts manufactured from recycled and renewable materials kept almost 35,000 tonnes* of waste out of landfills.

*2004 figures.

A breath of fresh air

In our bid to provide the healthiest car interiors possible, the Ford Focus and C-MAX, along with the new Ford S-MAX and Galaxy, were the first cars worldwide to receive the 'Allergy-Tested Interior' seal of approval from the TÜV; the German independent testing and assessment organisation. Not only that, but the certification has also been confirmed by the British Allergy Foundation. By combining materials that are free from harmful emissions, together with pollen and dust filters, the interiors provide the perfect allergy-friendly environment for sufferers of asthma, hay fever or contact allergies, such as eczema.

When less means more

What impact does a new vehicle have on air quality over its lifetime? How much noise will it produce when it drives down the street? Using a new tool called the Product Sustainability Index, Ford is taking a leading role by addressing the environmental, social and economic impact of its vehicles from the early stages of their development. As one of the key issues facing society in the 21st century, sustainable development presents an enormous global challenge and reinforces our message that 'business as usual' is not an option.

Finance and services

Across the UK, a dedicated network of Ford Dealers is equipped and trained to meet the needs of today's drivers. Because of our coveted reputation for quality and reliability, from the moment your new vehicle leaves the showroom, you are assured of lasting, attentive service in many ways. Ford not only cares through Dealers, we also offer a variety of finance and leasing schemes to suit the needs of both the private and business customer. With our wide choice of plans and services no one is more committed to delivering complete motoring confidence and total peace of mind than Ford.

Ford Credit

As part of Ford Motor Company Limited, Ford Credit offers convenient and competitive financial services to Ford customers. Choose, try, finance and insure your Ford – without having to leave the showroom.

Ford Options

Ford Options is the flexible way to finance your Ford. If you are looking to renew your vehicle more often, this is the ideal plan. At the end of the agreement, choose which option suits you best – own the vehicle, return it or choose a new one

Ford Acquire

Ford Acquire is a simple method of vehicle finance for private customers and business users. Convenient to arrange, and with flexible terms to suit your needs, owning your Ford has never been so easy.

Ford Business Partner

As a specialist division of Ford Credit dedicated to partnering businesses, Ford Business Partner will work with you to achieve a complete Contract Hire transport solution.

Ford Insure

Ford Insure offers a wide range of products for you and your Ford including Comprehensive Motor Insurance, Payment Protection Plan* and Guaranteed Asset Protection**. When you purchase a Ford from a Ford Dealer, you will receive 7 days' Driveaway cover*** free when you call Ford Insure for a no-obligation annual quotation.

What's the next step?

Your local Ford Dealer will be pleased to help if you have any further queries and advise you of current special promotions. Your Dealer can also supply a personalised quotation for the finance plan and vehicle of your choice. To find your local Ford Dealer, please call 0845 7111 888.

Services

Ford Protect

Every new Ford car sold is protected by a 3-year/60,000 miles Ford Protect Classic Plan Warranty. In addition it will also come with Ford Assistance for 1 year, providing roadside assistance in the UK and throughout Europe. You can also upgrade to a Ford Protect Premium Plan, giving you the option of scheduled servicing and extended Ford Assistance.

Ford Rapid Fit

The national fast-fit network backed by Ford, offering you the convenience of a 'no-appointment-necessary, while-you-wait' service covering tyres, exhausts, brakes, batteries and much more. There are over 240 sites nationwide.

Ford Accident Repair Centres

Should your Ford require accident repair, an approved Ford Accident Repair Centre is the best place to return your vehicle to its pre-accident condition. Repairers displaying the Ford Accident Repair Centre sign meet the rigorous customer service, technical and quality standards demanded by Ford. Ford trained technicians, the latest repair equipment and the use of original parts mean that the future safety and value of your vehicle are assured.

Finance subject to status. Guarantees/Indemnities may be required. Freeport Ford Credit. Correct at the time of going to print. Contact your Ford Authorised Dealer for terms and conditions. Business Partner Contract Hire is provided by Lex Vehicle Leasing. Registered address: Lex Vehicle Leasing Limited, Charterhall House, Charterhall Drive, Chester, CH88 3AN Registered in England 2952868. Part of the HBoS Group. Ford Insure is underwritten by Norwich Union Insurance Limited, registered in England no. 99122. Registered Office: 8 Surrey Street, Norwich NR1 NG and Norwich Union Life & Pensions Limited. Registered in England No: 3253947. Registered Office: 2 Rougier Street, York YO90 1UU. Both are members of the Aviva group. Both are authorised and regulated by the Financial Services Authority. For our joint protection, calls may be recorded and/or monitored. *Please refer to Payment Protection policy booklet for full details of the benefits and exclusions. **Ford Insure Guaranteed Asset Protection is underwritten by Mapfre Asistencia Compania Internacional de Seguros y Reaseguros Sociedad Anonima, Registered Address: Mapfre House 2/3 Philpot Lane, London EC3M 8AN. Company number: FC021974. Branch number: BR008042. Authorised and regulated by the Financial Services Authority. ***Excesses apply. Please refer to Summary of Cover for details. Maximum 5 vehicles. Not available in conjunction with any other promotion.

Specification

Exterior dimensions

Exterior (mm)	
Overall length	4372
Overall width without mirrors	1825
Overall width with mirrors	2022*
Overall height (unladen)	1588
Maximum Height (unladen)	1596
Liftover height (to bootlip) (unladen)	586
Liftover height (to bootlip) (laden)	542
Front overhang	906
Rear overhang	826
Wheelbase	2640

* 2023 mm on models with door mirror indicator

Interior dimensions

Front (mm)	
Effective headroom (without sunroof)	1021
Maximum effective legroom	1077
Shoulder room	1422
Rear (mm)	
Effective headroom (without sunroof)	960
Minimum effective legroom	951
Shoulder room	1402
Luggage area (mm)	
Maximum cargo height	921
Maximum width between wheel arches	1050
Loadspace length to back of rear seats	855
Loadspace length to back of front seats	1734
Stowable luggage (litres) [†]	
5-seat mode (laden to roof)	563*
2-seat mode (laden to roof)	1633*

[†]Measured using the VDA method. Dimensions may vary dependent on the model and equipment fitted. *With Tyre Puncture Repair Kit

Engine data

	Engine technical features	Maximum power ^o	Maximum torque ^o
1.6 Duratec 1596 cc	4 cylinders in line; DOHC; 16 valves; alloy cylinder head and block; electronic multipoint fuel injection; electronic throttle	74 kW (100 PS) at 6000 min ⁻¹ (rpm)	150 Nm at 4000 min ⁻¹ (rpm)
1.8 Duratec 1798 cc	4 cylinders in line; DOHC; 16 valves; variable intake system; alloy cylinder head and block; electronic multipoint fuel injection	92 kW (125 PS) at 6000 min ⁻¹ (rpm)	165 Nm at 4000 min ⁻¹ (rpm)
2.0 Duratec 1999 cc	4 cylinders in line; DOHC; 16 valves; variable intake system; alloy cylinder head and block; electronic multipoint fuel injection	107 kW (145 PS) at 6000 min ⁻¹ (rpm)	185 Nm at 4500 min ⁻¹ (rpm)
1.6 Duratorq TDCi Diesel 1560 cc	4 cylinders in line; DOHC; 16 valves; alloy cylinder head and block; direct injection with high-pressure, common-rail, multipoint fuel injection system; fixed geometry turbocharger with intercooler and transient torque overboost function; electronic throttle; dual-mass flywheel	66 kW (90 PS) at 4000 min ⁻¹ (rpm)	215 Nm at 1750 min ⁻¹ (rpm)
1.8 Duratorq TDCi Diesel 1753 cc	4 cylinders in-line; SOHC; 8 valves; cast iron head and block; direct injection with high-pressure, common-rail, multipoint fuel injection system; electrically actuated variable geometry turbocharger with intercooler and transient torque overboost function; electronic EGR; dual-mass flywheel	85 kW (115 PS) at 3700 min ⁻¹ (rpm)	280 / 300* Nm at 1900 min ⁻¹ (rpm)
2.0 Duratorq TDCi Diesel 1997 cc	4 cylinders in line; DOHC; 16 valves; alloy cylinder head and block; direct injection with high-pressure, common-rail, multipoint fuel injection system; variable geometry turbocharger with intercooler and transient torque overboost function; electronic throttle; dual-mass flywheel	100 kW (136 PS) at 4000 min ⁻¹ (rpm)	320 / 340* Nm at 2000 min ⁻¹ (rpm)
DPF and FFV Engine Data			
1.8 Duratec Flexifuel 1798 cc	4 cylinders in line; DOHC; 16 valves; alloy cylinder head and block, electronic multipoint fuel injection; electronic gas injection; fuel vapouriser/pressure regulator; dedicated Engine Control Unit	92KW (125 PS) at 6000 min ⁻¹ (rpm)	165 Nm at 4000 min ⁻¹ (rpm)

Engine data

	Engine technical features	Maximum power ^o	Maximum torque ^o
1.6 Duratorq TDCi Diesel DPF 1560 cc	4 cylinders in line; DOHC; 16 valves; alloy cylinder head and block; direct injection with high-pressure, common-rail, multipoint fuel injection system; variable geometry turbocharger with intercooler and transient torque overboost function; diesel particulate filter; electronic throttle; dual-mass flywheel	80 kW (109 PS) at 4000 min ⁻¹ (rpm)	240 / 260*Nm at 1750 min ⁻¹ (rpm)
2.0 Duratorq TDCi Diesel DPF 1997 cc	4 cylinders in line; DOHC; 16 valves; alloy cylinder head; direct injection with high-pressure, common-rail, multipoint fuel injection; variable geometry turbocharger with intercooler and transient torque overboost function; diesel particulate filter; electronic throttle; dual-mass flywheel	81 kW (110 PS) at tba min ⁻¹ (rpm)	275 Nm at 2000 min ⁻¹ (rpm)
2.0 Duratorq TDCi Diesel DPF 1997 cc	4 cylinders in line; DOHC; 16 valves; alloy cylinder head; direct injection with high-pressure, common-rail, multipoint fuel injection; variable geometry turbocharger with intercooler and transient torque overboost function; diesel particulate filter; electronic throttle; dual-mass flywheel	100 kW (136 PS) at 4000 min ⁻¹ (rpm)	320 / 340*Nm at 2000 min ⁻¹ (rpm)

^oTested in accordance with ISO 1585. *With transient overboost.

Fuel, performance and emissions

	Stage	Derivative	CO ₂ emissions (g/km) ^{oo}	Fuel consumption (L/100 km) (mpg) ^{oo}			Performance ^o		
				Urban	Extra Urban	Combined	Max.speed (mph)	0-62 mph (secs)	31-62 mph* (secs)
1.6 Duratec (100 PS)	Stage IV	Studio, Style, Zetec	164	8.9 (31.7)	5.7 (49.6)	6.9 (40.9)	109	12.9	14.6
1.8 Duratec (125 PS)	Stage IV	Style, Zetec, Titanium	169	9.6 (29.4)	5.6 (50.4)	7.1 (39.8)	121	10.8	12.9
1.8 Duratec Flexifuel [†] (125 PS) [†]	Stage IV	Style, Zetec, Titanium	169	9.6 (29.4)	5.6 (50.4)	7.1 (39.8)	121	10.8	12.9
2.0 Duratec (145 PS)	Stage IV	Zetec, Titanium	171	9.9 (28.5)	5.5 (51.3)	7.2 (39.2)	126	9.8	12.3
2.0 Duratec (145 PS) Durashift 4-speed auto	Stage IV	Zetec, Titanium	189	11.2 (25.2)	6.2 (45.6)	8.0 (35.3)	119	11.2	n/a
1.6 Duratorq TDCi (90 PS)	Stage IV	Style, Zetec	124	5.9 (47.9)	4.0 (70.6)	4.7 (60.1)	108	13.1	13.3
1.6 Duratorq TDCi (109 PS)	Stage IV + DPF	Style, Zetec, Titanium	126	6.1 (46.3)	4.0 (70.6)	4.8 (58.8)	115	11.3	12.1
1.8 Duratorq TDCi (115 PS)	Stage IV	Style, Zetec, Titanium	143	6.9 (40.9)	4.5 (62.8)	5.4 (52.3)	117	11.2	10.4
2.0 Duratorq TDCi (110 PS) 'Ford PowerShift' 6-speed auto	Stage IV (+ DPF)	Zetec, Titanium	159	8.0 (35.3)	4.8 (58.8)	5.9 (47.9)	111	11.9	n/a
2.0 Duratorq TDCi (136 PS) Durashift 6-speed manual	Stage IV / Stage IV + DPF	Zetec, Titanium	149	7.3 (38.7)	4.7 (60.1)	5.7 (49.5)	124	9.6	8.3
2.0 Duratorq TDCi (136 PS) 'Ford PowerShift' 6-speed auto	Stage IV (+ DPF)	Zetec, Titanium	159	8.0 (35.3)	4.8 (58.8)	5.9 (47.9)	122	10.1	n/a

^{*}In 4th gear. ^{oo}All CO₂ emissions figures in g/km and fuel consumption figures in L/100 km (mpg) are tested in accordance with 80/1268/EEC as amended. The CO₂ emissions and fuel consumption test figures shown in the chart do not express or imply any guarantee of the emissions or fuel consumption of a car of the class in question. ^oFord test figures. **Note** All vehicles are 5-speed manual unless 6-speed manual or auto stated. **DPF** = Diesel Particulate Filter. **'Flexifuel'** engine can run on both bio-ethanol (E85) as well as petrol and in any combination. The fuel economy data published above relate to use of petrol 95 RON; use of alcohol fuel or a mixture of petrol and alcohol will lead to other fuel economy data. All the figures are based on tests conducted on vehicles with core equipment level and with standard wheels and tyres; optional or accessory wheels and tyres may have an effect on the emissions and fuel consumption. **Urban** An engine started from cold in laboratory conditions operated at varying speeds, maximum 31 mph, average 12 mph over a theoretical distance of 2.5 miles (4 km). **Extra Urban** Conducted immediately after the urban cycle, it consists of half steady speed driving and half varying speed driving, maximum 75 mph over a distance of 4.3 miles (7 km). **Combined** This is an average of the two parts of the test, weighted by the distances covered in each part.



With its new wider track, the Ford C-MAX presents a solid stance on the road. This translates into sure-footed handling and confident lane-changes, whether driving on your own or with all the family on board.



Control Blade independent rear suspension

Allows each rear wheel to react independently to bumps in the road for a smoother ride. Also enhances cornering stability, thanks to built-in passive rear-wheel steering effect. Control Blade rear suspension is more effective at cushioning impacts than widely-used torsion beam suspension.



Brake technology

Powerful four-wheel disc brakes with an Anti-lock Braking System (ABS) and Electronic Brake-force Distribution (EBD) help to prevent the wheels locking up, for outstanding stopping capability.

Specification

Model availability, weights and loads

	Stage	Kerbweights [®] Studio	Style, Zetec	Titanium	Gross Vehicle Mass (kg)	Max. Towable Mass (kg)
1.6 Duratec (100 PS)	Stage IV	1334	1372		1855	1200
1.8 Duratec (125 PS)	Stage IV		1409	1450	1910	1200
1.8 Duratec Flexifuel (125 PS) [†]	Stage IV		1409	1450	1910	1200
2.0 Duratec (145 PS)	Stage IV		1420	1461	1925	1400
2.0 Duratec (145 PS), Durashift 4-speed auto	Stage IV		1435	1455	1930	1300
1.6 Duratorq TDCi (90 PS)	Stage IV		1419		1920	1300
1.6 Duratorq TDCi (109 PS)	Stage IV + DPF		1426	1446	1920	1300
1.8 Duratorq TDCi (115 PS)	Stage IV		1491	1512	1995	1500
2.0 Duratorq TDCi (110 PS) 'Ford PowerShift' 6-speed auto	Stage IV + DPF		1532	1561	2025	1500
2.0 Duratorq TDCi (136 PS)Durashift 6-speed manual	Stage IV + DPF		1527	1563	1990	1500
2.0 Duratorq TDCi (136 PS)	Stage IV		1506	1543	1990	1500
2.0 Duratorq TDCi (136 PS) 'Ford PowerShift' 6-speed auto	Stage IV + DPF		1532	1561	2025	1500

[®]Represents the lightest kerbweight assuming driver at 75 kg, full fluid levels and 90% fuel levels, subject to manufacturing tolerances and options, etc., fitted. **Note** All petrol engines are equipped with a catalytic converter. All vehicles are 5-speed manual unless 6-speed manual or auto stated. **DPF** = Diesel Particulate Filter. [†] Flexi-fuel engine can run on both bio-ethanol (E85) as well as petrol and in any combination. **Towing limits** The performance and economy of all models will be reduced when used for towing. **Nose weight** limit is a maximum of 75 kg on all models. For further guidance, refer to the National Caravan Council’s Towing Guide.

Mechanical features

	Studio	Style	Zetec	Titanium
Brakes				
Disc brakes – Front and rear	●	●	●	●
Anti-lock brakes (ABS) with electronic brake-force distribution (EBD)	●	●	●	●
Emergency Brake Assist (EBA)	●	●	●	●
Electronic Stability Programme (ESP) with Traction Assist	●	●	●	●
Fuel tank				
55 litres (usable capacity) (53 litres on diesels)	●	●	●	●
Steering				
Power-assisted, rack-and-pinion	●	●	●	●
Hydraulic Power-Assisted Steering (HPAS) (only available with 1.6 Duratec petrol engines)	●	●	●	●
Electric Hydraulic Power-Assisted Steering (EHPAS) (not available with 1.6 Duratec petrol engines)		●	●	●
Suspension and body				
Front – Independent with MacPherson struts, rebound springs (not available with 1.6 Duratec (100 PS) petrol engine)	●	●	●	●
Rear – Independent Short-Long Arm (SLA) Control Blade multi-link system mounted on subframe, anti-roll bar and gas-filled dampers	●	●	●	●
Sports suspension		□	□	□
Turning circle				
Kerb to kerb 10.6 m (11.7 m with 18" wheels)	●	●	●	●

● = Standard, ◯ = Option at extra cost, □ = Option as part of Sports pack.

Insurance groups

	Studio	Style	Zetec	Titanium
1.6 Duratec (100 PS) (Stage IV)	5E	6E	6E	
1.8 Duratec (125 PS) (Stage IV)		7E	7E	8E
1.8 Flexifuel (Stage IV)		7E	7E	8E
2.0 Duratec (145 PS) (Stage IV)			11E	12E
2.0 Duratec (145 PS), Durashift 4-speed auto (Stage IV)			11E	12E
1.6 Duratorq TDCi (90 PS) (Stage IV)		7E	7E	
1.6 Duratorq TDCi (109 PS) (Stage IV (+ DPF))		7E	7E	8E
1.8 Duratorq TDCi (115 PS) (Stage IV)		7E	7E	8E
2.0 Duratorq TDCi (136 PS) (Stage IV (+ DPF))			9E	10E
2.0 Duratorq TDCi (136 PS) (Stage IV)			9E	10E

E = Exceeds security requirement for model concerned and group rating has been reduced.

Safety and security features

Safety	Studio	Style	Zetec	Titanium
Intelligent Protection System (IPS):				
Airbags – Driver’s and front passenger’s [•]	●	●	●	●
Airbags – Driver’s and front passenger’s front side impact airbags	●	●	●	●
Airbags – Front and rear, side curtain airbags deployed from the headlining	●	●	●	●
Airbags – Passenger’s airbag deactivation switch (Dealer-fitted option, not available with Park Assist – ‘Front and rear’ option)	◯	◯	◯	◯
Hazard Warning Light - Automatic activation of all turn indicators when emergency braking is applied	●	●	●	●
Steel safety cage with engine compartment cross beam and side impact door beams	●	●	●	●
Seat belts – 3-point seat belts with pre-tensioners and load limiters (all seats)	●	●	●	●
Seat belts – Front, height adjustable mounts	●	●	●	●
Seats – ISOFIX mounting provision for child seats (outer seats only)	●	●	●	●
Seats – ISOFIX mounting brackets for child seats (Dealer fit option)	N/C	N/C	N/C	N/C
Security				
Alarm – Perimeter [•]		◯	●	
Alarm – Perimeter with volume sensing (CAT 1 Thatcham approved)			◯	●
Fuel flap – Central locking linked	●	●	●	●
Immobiliser – Passive Anti-Theft System (PATS)	●	●	●	●
Ford KeyFree System – Includes keyless entry and Ford Power Button			◯	◯
Locking bonnet – Key-operated	●	●	●	●
Locks – Remote control central/double locking	●	●	●	●
Vehicle Identification Number (VIN) – Visible	●	●	●	●

● = Standard, ◯ = Option at extra cost. N/C = No cost option - must be specified at time of order. ***Note: A child seat should never be placed in the front passenger seat when the Ford vehicle is equipped with an operational front passenger’s airbag. The safest place for children is properly restrained on the rear seat.** [•]Standard on Style for 1.8 Duratec Petrol and 1.8 Duratorq TDCi (115 PS) diesel engine.

***Note: A child seat should never be placed in the front passenger seat when the Ford vehicle is equipped with an operational front passenger’s airbag. The safest place for children is properly restrained on the rear seat.**



Emergency Brake Assist (EBA)

EBA senses an attempted emergency stop by monitoring the pressure being applied to the brake pedal. The system then applies full braking pressure which, in conjunction with ABS, results in faster, safer braking.



Passenger cell

At the heart of the Ford C-MAX safety system is its rigid passenger cell. Optimised to retain its shape during a variety of potential impact situations, the body structure helps to deflect crash energy safely away from the car’s occupants.



Safety technology

The Ford C-MAX's Intelligent Protection System features a range of passive safety technologies, including full-sized driver and passenger airbags*, side thorax airbags and inflatable side curtain airbags.

Specification

Exterior features

	Studio	Style	Zetec	Titanium
Styling				
Bodyside mouldings – Black	●	●	●	
Bodyside mouldings – Body colour				●
Full bodystyling kit – Body colour front, rear and side skirts, self-colour black lower grille, unique front grille with body colour surround, unique front fog light bezels and self-colour lower door claddings, and 17" or 18" alloy wheels (not available with tow bars)			○	○
Bonnet applique – Chrome finish	●	●	●	●
Bumpers – Body colour	●	●	●	●
Bumpers – Rear bumper scratch pad moulding		●	●	●
Door and tailgate handles – Body colour		●	●	●
Paint – Metallic	○	○	○	○
Panoramic roof – Fixed (not available with sunroof)		○	○	○
Radiator grille – Chrome finish surround				●
Spoiler – Roof-mounted	●	●	●	●
Spoiler – Roof-mounted, body colour		□	□	□
Functional				
Door mirrors – Electrically-operated	●			
Door mirrors – Electrically-operated and heated, body colour housings		●	●	●
Door mirrors – Integrated side turn indicators and puddle lights				●
Heated rear window	●	●	●	●
Quickclear Heated windscreen – with heated washer jets	○	○	●	●
Park Assist – Front and rear sensors (passenger's airbag deactivation switch not available with 'Park Assist – Front and rear' option)		○	○	○
Park Assist – Rear sensors	○	○	○	○
Glass – Privacy, Dark tinted (rear windows only)		○	●	○
Glass – Blue tinted				●
Tow bar – Fixed or detachable (including 13-pin electrical kit)	○	○	○	○
Windscreen – Solar Reflect				○
Wipers – Front, variable intermittent with electric wash	●	●	●	●
Wiper – Tailgate, intermittent with electric wash and auto-reverse wipe	●	●	●	●
Wipers – Rain-sensing windscreen wipers				●
Lights				
Adaptive Front Lighting System (not available with Bi-Xenon headlights)		○	○	○
Automatic headlights				●
Front fog lights			●	●
LED rear lights, rear fog lights, reversing lights, high mounted rear brake light	●	●	●	●
Bi-Xenon headlights with halogen light strip, automatic headlight levelling and washer jets			○	○

● = Standard ○ = Option at extra cost □ = Part of Sport Pack at extra cost.

Audio and communication systems

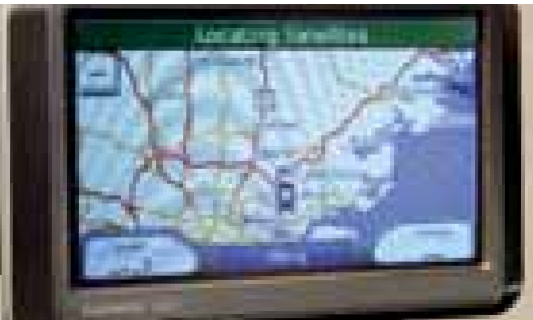
	Studio	Style	Zetec	Titanium
Remote audio controls (column-mounted)		●	●	●
Stereo radio/CD – 'Keycode' anti-theft coding and 6 speakers (4 front, 2 rear)	●	●	●	
Sony CD Audio System – RDS EON, MP3 capability, 'Keycode' anti-theft coding, 8 premium speakers		○	○	●
Sony 6CD Audio System – RDS EON, MP3 capability, 'Keycode' anti-theft coding, 8 premium speakers			○	○
Sony CD Audio System with DAB – DAB Digital Radio, RDS EON, MP3 capability, 'Keycode' anti-theft coding, 8 premium speakers (Only available from Summer 2008)		○	○	○
Sony 6CD Audio System with DAB – DAB Digital Radio, RDS EON, MP3 capability, 'Keycode' anti-theft coding, 8 premium speakers (Only available from Summer 2008)			○	○
Music connection socket located in centre console	●	●	●	●
Advanced navigation system – 5" colour display, stereo radio/CD/MP3, SD Memory Card slot, 4 front speakers and 2 rear speakers and external 6xCD underseat autochanger		○	○	○
Premium navigation system – 7" touch-screen, colour display, stereo radio/single CD RDS EON, MP3 capability, 8 premium speakers (includes DEATC air conditioning and heated front seats)			○	○
Premium navigation system – 7" touch-screen, colour display, stereo radio/CD RDS EON, MP3 capability plus 6xCD underseat autochanger, 8 premium speakers (includes DEATC air conditioning and heated front seats)			○	○
Bluetooth® Hands-Free and Voice Control System** with remote phonebook access. Does not include mobile phone*		○	○	○
Bluetooth® Hands-Free and Voice Control System with USB/MP3 connectivity module** with remote phonebook access. Does not include mobile phone* (Note: Only available from Summer 2008 with Sony Audio or navigation systems:)		○	○	○

● = Standard ○ = Option at extra cost. *It is an offence for drivers to use a hand-held mobile phone or similar device while driving. The Bluetooth® word mark and logos are owned by the Bluetooth SIG, Inc. and any use of such marks by Ford Motor Company is under licence. Other trademarks and trade names are those of their respective owners. **Voice Control System functionality linked to compatible options at extra cost.

Wheel availability

	Studio	Style	Zetec	Titanium
6x15" steel with 9-spoke wheelcovers and 195/65 R15 tyres	●			
6½x16" 5 spoke Design Wheels with 205/55 R16 tyres		●		
6x16" 5-spoke 'Y' finish alloy with 205/55 R16 tyres		□	●	
7x17" 8 spoke alloy with 205/50 R17 tyres			□	
7x17" multi-spoke alloy with 205/50 R17 tyres				●
7½x18" 5-spoke alloy with 225/40 R18 tyres				□
Tyre Puncture Repair Kit	●	●	●	●
Mini steel spare	N/C	N/C	N/C	N/C
Locking wheel nuts (only available with alloy wheels)		□	●	●

● = Standard, N/C = No cost option, □ = Optional as part of Sport Pack.



Garmin Portable Navigation

A range of portable satellite navigation devices is available to suit all needs including full European road mapping, MP3 playback facility and Bluetooth® for handsfree connectivity. (Accessory).



Becker navigation system 'Indianapolis Pro'

Single DIN-sized navigation system, known for its brilliant sound and superior navigation abilities within most European countries. TMC traffic announcements and speed signal feature provide dependable navigation, even in areas with poor GPS signal reception. Also plays MP3. DIN adaptor with optional CD box is available separately, as well as an additional 6-CD changer. (Accessory)



Cruise control

Simply select your desired speed and the system will maintain it for as long as you wish. The selected speed can be manually increased or decreased, with the car automatically resuming the last set speed if desired. (Optional on Zetec and Titanium)

Specification

Interior features

	Studio	Style	Zetec	Titanium
Comfort and convenience				
Accessory socket/stowage tray	●	●	●	●
Adjustable pedals				○
Air recirculation	●	●	●	●
Air conditioning		●	●	●
Air conditioning – Dual Electronic Automatic Temperature Control (DEATC)			○	○
Centre console – Base, with two open stowage bins, two cup holders, stowage tray and accessory socket	●	●	●	
Centre console – Premium, with sliding centre armrest large stowage bin, cup holder,trinket tray underneath plus two stowage bins at rear, stowage tray, accessory socket and rear power point.				●
Glovebox – Single, illuminated	●	●	●	●
Grab handles – Three, with rear coat hooks (front on passenger’s side only)	●			
Grab handles – Four, with rear coat hooks (driver’s includes sunglasses holder)		●	●	●
Mirror – Auto-dimming rear-view				●
Mirror – Located in front overhead console for child observation (not available with sunroof)		●	●	●
Power converter – 230v to 150w, located in centre console		○	○	○
Power point – Located in centre console (additional rear power point included with premium centre console, if fitted)	●	●	●	●
Stowage – Front doors, front and rear of centre console	●	●	●	●
Stowage boxes – Two, underneath rear passenger’s foot area	●	●	●	●
Stowage unit – Located in upper instrument panel (with lid on Titanium)	●	●	●	●
Stowage box – Rear seat centre console and stowage box (only available with comfort seat system)		○	○	○
Sunblinds – Integrated in rear doors		●	●	●
Sunglasses holder		●	●	●
Sunroof – Electrically-operated, tilt/slide (not available with panoramic roof)	○	○	○	○
Windows – Front, electrically-operated with one-touch lowering on driver’s side	●	●	●	
Windows – Front and rear, electrically operated with one-touch lowering/closing on drivers side, anti-trap feature and global opening/closing (includes Headlamp Delay)				●
Seat and seat belts				
Front seat – Driver’s 6-way manual adjustment	●	●	●	●
Front seat – Driver’s adjustable lumbar support		●	●	●
Front seat – Driver’s 6-way power adjustment with adjustable lumbar support (only available with leather trim)			○	○ / □
Front seat – Passengers 6-way manual adjustment with adjustable lumbar support				●
Front seat – Driver’s armrest, driver seat-mounted (integrated in premium centre console on Titanium)		●	●	●
Front seats – Fully reclining with fully adjustable head restraints	●	●	●	●
Front seats – Heated cushion and seat back		○	○	○
Front seats – Sports		□	□	□
Rear seats – Three individual seats, ‘Tip and tumble’ with 40/20/40 split-fold (all seats are foldable and removable)	●	●	●	●
Rear seats – Three individual seats, Comfort Seat System, with 40/20/40 split-fold (outer seats slide diagonally, backward and inward) (all seats are foldable and removable)		○	○	○
Rear seats – Three height-adjustable head restraints	●	●	●	●
Seats – Anti-submarining	●	●	●	●
Seats – Partial leather-trimmed (only available with Sport Pack 3)				□
Seats – Leather-trimmed (includes heated front seats and driver’s 6-way power adjustment)			○	○ / □

Interior features

	Studio	Style	Zetec	Titanium
Seat back trays – Folding		●	●	●
Stowage pockets – Front seat backs	●	●	●	●
Seat belts – Lap and diagonal inertia reel on all seats	●	●	●	●
Seat belts – Front height-adjustable mounts	●	●	●	●
Carpet and trim				
Carpet – Non-woven	●			
Carpet – Luxury		●	●	●
Carpet – Premium velour slip mats, front and rear, with aluminium finish nameplate on front mats		○	○	●
Door handles – Aluminium finish		●	●	●
Instruments and controls				
Instruments – Speedometer, tachometer, electric odometer and trip recorder, fuel gauge and water temperature gauge	●	●	●	●
Trip/fuel computer, incorporating exterior air temperature		●	●	●
Warning indicators for: Airbag/seat belt pre-tensioner, gear selector lever lock, charge control, engine temperature, brake pad wear, low fuel, oil pressure, doors open, ABS system, handbrake on/low brake fluid, ignition/alternator system, ‘lights on’, key-in-ignition, door ajar, driver’s side seat belt reminder and revers gear audible warnings	●	●	●	●
Variable dimming of instrument cluster and radio screen display				●
Keyfree System – Includes keyless entry and Ford Power button (only available with premium centre console)		○	○	○
Illuminated recirculation heater controls – 4-speed fan with pollen filter, active carbon filter, direction control, two dedicated side window demists and rear compartment ducts		●	●	●
Cruise control			○	○
Steering column – Reach and rake adjustable	●	●	●	●
Steering wheel – 4 spoke (with silver accents on Style)	●	●		
Steering wheel – Leather trimmed with ‘silver-finish’ spokes			●	●
Interior lighting				
Courtesy light – Front overhead with theatre-style dimming and delayed switch-off	●	●	●	●
Courtesy lights – Front overhead with two map lights		●	●	
Courtesy lights – Front overhead with two map lights, red night ambient light and front footwell light				●
Courtesy lights – Rear overhead dome courtesy light (includes reading lights on Style, Zetec and Titanium)	●	●	●	●
Load compartment light	●	●	●	●
Luggage compartment				
Auxiliary power socket		●	●	●
Load barrier retention net	□	□	□	□
Tonneau cover		●	●	●
Stowage – Cargo net	□	□	□	□

● = Standard, ○ = Option at extra cost, □ = Part of Pack at extra cost.



Dual-zone Electronic Automatic Temperature Control (DEATC) air conditioning
Can be adjusted separately for the driver and front passenger, with up to 6°C variation from side to side. (Option on Zetec and Titanium)



Ford Key-Free System
Lock and unlock the doors and boot, and start the engine, without removing the keys from your pocket or bag. Comes with power-foldable and heated door mirrors and new ‘**Ford Power**’ starter button which brings an extra thrill to the start of every drive. (Option on Zetec and Titanium)



Child observation mirror
Keep an eye on tiny passengers with the convenient child observation mirror. (Standard on Style, Zetec and Titanium)

Specification

Feature packs

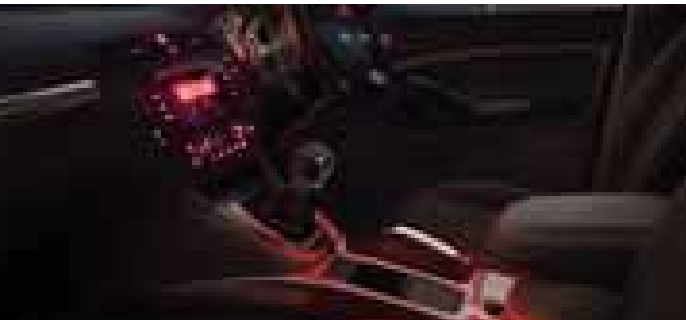
	Studio	Style	Zetec	Titanium
Traveller Pack – Load barrier retention net, floor net and reversible luggage compartment carpet floor mat	○	○	○	○
Smokers' Pack – Ashtray and cigar lighter replace stowage tray and power point	○	○	○	○
Sport Pack 1 – 16" 5 spoke 'Y' finish alloys, Sport Suspension, Sport Front Seats, body colour rear spoiler and 4 spoke leather trimmed steering wheel		○		
Sport Pack 2 – 17" 8 spoke alloys, Sport Suspension, Sport Front Seats and body colour rear spoiler			○	
Sport Pack 3 – 18" 5 spoke alloys, Partial Leather trim, Sport Suspension, Sport Front Seats and body colour rear spoiler				○
Titanium X Pack – Leather trim seats, driver seat 6-way/passenger 4-way manual adjustments with adjustable lumbar support, heated front seats, privacy glass, front and rear parking sensors and Sony 6CD				○
Titanium Sport X Pack – 18" 5 spoke 'IOSIS' alloys, Leather trim seats, driver seat 6-way/passenger 4-way manual adjustments with adjustable lumbar support, heated front seats, privacy glass, front and rear parking sensors, Sony 6CD, Sports Suspension and body colour rear spoiler				○
Communications Pack – Includes Advanced Satellite Navigation System with 5" colour display, Bluetooth Voice Control and USB slot (Available Summer 2008)		○	○	○

● = Standard, ○ = Option at extra cost.

Trim and body colour availability

Model	Studio	Style/Zetec			Zetec	Titanium		
Feature colour	Ebony	Ebony	Ebony	Ebony	Ebony	Ebony	Ebony	Ebony
Environment colour	Dark Flint	Dark Flint	Pewter	Dark Flint	Dark Flint	Dark Flint	Dark Flint Waffle/ partial leather	Dark Flint
Seat trim	Debuffet	Regiment	Regiment	Rack†	Napoli leather*	Span	Partial Leather†	Napoli leather*
Solid body colours								
Blazer Blue (1)	BL	R	P	E	–	–	MB	E
Colorado Red (2)	BL	R	P	E	–	–	–	–
Frozen White (3)	BL	R	P	E	–	–	MB	E
Metallic body colours*								
Avalon (4)	BL	R	P	E	E	E	MB	E
Chill (5) **	BL	R	P	–	E	E	MB	E
Moondust Silver (6)	BL	R	P	E	E	E	MB	E
Morello (7)	BL	R	–	E	E	E	MB	E
Ocean Blue (8)	BL	–	P	E	E	E	MB	E
Panther Black (9)	BL	R	P	E	E	E	MB	E
Sea Grey (10)	BL	R	P	E	E	E	MB	E
Tango Red (11)	BL	R	–	–	–	E	MB	–
Vision (12)	BL	–	P	E	E	E	MB	E

Seat trim colour key: BL = Blue, BI = Biscuit, E = Ebony, MB = Midnight Black, P = Pewter, R = Red. *Metallic paint, partial leather trim and leather trim are options at extra cost. Leather trim includes heated front seats. ** Only available from Summer 2008 onwards † Available with Sport Pack only.



Ambient lighting

Ambient lighting bathes the gearshift and centre console in a subtle red glow. (Standard on Titanium)



*Metallic paint, partial leather trim and leather trim are optional, at extra cost.
**Only available with optional 'Sports' front seats.
†Available from Summer 2008.

Note The car images used are to illustrate body colours only and may not reflect current specification or product availability in certain markets. Colours and trims reproduced within this brochure may vary from the actual colours, due to the limitations of printing processes used.



Regiment in Pewter seat facing, Mondus in Pewter seat sides (Style and Zetec)



Regiment in Red seat facing, Mondus in Dark Flint seat sides (Style and Zetec)



Span in Ebony seat facing, Lux in Ebony seat sides (Titanium)



Rack in Ebony seat facing, Mondus in Ebony seat sides (Optional on Style and Zetec as part of Sports Pack)**



Napoli leather in Ebony seat facing, Napoli leather in Ebony seat sides (Optional on Titanium as part of Titanium X Pack)*



Waffle in Midnight Black seat facing, Napoli leather in Ebony seat sides (Optional on Titanium as part of Sport Pack)* **