

Illustrations, descriptions and specifications. This brochure was correct at the time of going to print. However, Ford policy is one of continuous product development. The right is reserved to change specifications, colours and prices of the models and items illustrated and described in this publication at any time. For the latest details always consult your Ford Dealer. **Optional equipment.** Throughout this publication, wherever a feature is described as being an 'Option' or 'Optional Fitment/Pack', etc., you should assume that it will be at extra cost to the base vehicle, unless specifically stated to the contrary. All models and colour combinations are subject to availability. **Note.** Some images portrayed are of a pre-production model and/or are computer generated, therefore, the design/features on the final version of the vehicle may differ in various respects. In addition, some of the features shown on the vehicles may be optional. **Note.** This brochure contains both original Ford accessories as well as a range of carefully selected products from our suppliers, which are featured under their own brands. All supplier branded products are subject to warranty terms defined by the relevant suppliers and do not lie within the responsibility of Ford. **Note.** The Bluetooth® word mark and logos are owned by the Bluetooth SIG, Inc. and any use of such marks by Ford Motor Company is under licence. Other trademarks and trade names are those of their respective owners.

The Government fuel figures do not express or imply any guarantee of the fuel consumption of any particular car. The cars themselves have not been tested and there are inevitably differences between individual cars of the same model. In addition, a car may incorporate particular modifications. Furthermore, the driver's style and road and traffic conditions, as well as the extent to which the car has been driven and the standard of maintenance, will affect its fuel consumption. **Insurance groups** are only as recommended by the Association of British Insurers. You should always consult your insurance adviser for confirmation.

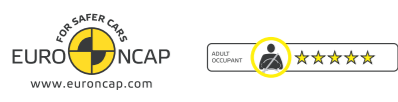
Fuel, performance and emissions

	Trans	CO ₂ emissions (g/km)**	Fuel consumption in L/100km/(mpg)**			Performance*		
			Urban	Extra Urban	Combined	Max. speed (mph)	0-62 mph (secs)	31-62 mph* (secs)
3-door Focus								
1.6 Duratorq TDCi (90 PS)	M5	114	5.5 (51.3)	3.6 (78.4)	4.3 (65.7)	111	12.6	12.5
1.6 Duratorq TDCi DPF (109 PS)	M5	115	5.6 (50.4)	3.6 (78.4)	4.3 (65.7)	118	10.9	10.7
5-door Focus								
1.6 Duratorq TDCi (90 PS)	M5	114	5.5 (51.3)	3.6 (78.4)	4.3 (65.7)	111	12.6	12.5
1.6 Duratorq TDCi DPF (109 PS)	M5	115	5.6 (50.4)	3.6 (78.4)	4.3 (65.7)	118	10.9	10.7
5-door Focus Wagon								
1.6 Duratorq TDCi (90 PS)	M5	114	5.5 (51.3)	3.6 (78.4)	4.3 (65.7)	111	12.9	12.5
1.6 Duratorq TDCi DPF (109 PS)	M5	115	5.6 (50.4)	3.6 (78.4)	4.3 (65.7)	118	11.1	10.9

*In 4th gear. **Ford test figures. **All CO₂ emissions figures in g/km and fuel consumption figures in L/100 km are tested in accordance with 80/1268/EEC as amended. The CO₂ emissions and fuel consumption test figures shown in the chart do not express or imply any guarantee of the fuel consumption of a car of the class in question. All the figures are based on tests conducted on vehicles with Core equipment level and with standard wheels and tyres; optional or accessory wheels and tyres may have an effect on the emissions and fuel consumption of a vehicle. **Note** All vehicles are 5-speed manual. All engines are Emissions Stage IV.

FordFocus ECOnetic

Feel the difference



Allergy-tested interior. All materials used in the manufacture of the interior of this vehicle meet the strict requirements of the TÜV TOXPROOF Criteria Catalogue for Vehicle Interiors by the TÜV Produkt und Umwelt GmbH and are designed to minimise the risk of allergic reactions. With doors and windows closed, the interior materials selected – together with the integrated pollen filter – protect the passengers against most allergising particles from the outdoor air. At higher temperatures, the additional use of air conditioning is recommended.

Collect Nectar points at participating Ford Dealers now. So keep a look out for the latest Ford offers at www.ford.co.uk/nectar or call the Ford Information Service on 0845 7111 888.*



Ford recommends BP.



Published by Ford Motor Company Limited, Brentwood, Essex, England. Registered in England No. 235446. BJN 304863. PN 872503/0608/20m/GBR en June 2008. © Ford Motor Company Limited.

www.ford.co.uk



Better for the environment

Like you, everyone at Ford is concerned about the potential impact of climate change. So we're developing new ideas to make our cars more environmentally sustainable, without compromising on style or performance. Some of these ideas will take time to bear fruit. Others can have an impact now. Ford ECONetic is the result of this philosophy: low-emission diesel cars that are affordable, stylish and rewarding to drive.

Better for you

With such low emissions, Vehicle Excise Duty for the Ford Focus ECONetic costs just £35 per year.

ECONetic



Ford Focus ECONetic

Ford Focus ECONetic's generous standard specification proves that caring for the environment doesn't have to compromise your driving pleasure.

ECONetic emissions-reducing features:

Low rolling resistance tyres

Reduce frictional drag so less energy is required to maintain progress along the road

Lowered sports suspension

Lowers the height of the car to improve aerodynamic efficiency

Special engine calibration

The 1.6-litre Duratorq TDCi 90 PS and 109 PS engines have been modified for optimum fuel economy without compromising the renowned driveability of Ford Focus

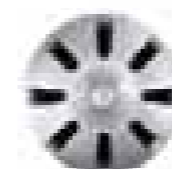
Colour-coordinated aerodynamic front bumper skirt and rocker panel skirts

Channels airflow over the car more efficiently to reduce drag

Key standard features:

- 15" Steel Wheels with 195/65R15 low resistance tyres
- Air conditioning
- CD Player
- Ford Easy Fuel capless refuelling system
- Electronic Stability Programme (ESP)
- Tyre puncture repair kit in lieu of mini spare wheel

Other than the unique features mentioned in this catalogue, Ford Focus ECONetic shares the same standard specification, option availability and colour and trim choices as the Ford Focus Style series. Please refer to the main Ford Focus brochure for details. However, please note that 17" and 18" alloy wheels are not available for Ford Focus ECONetic.



15" 8-spoke wheel cover design. (Standard)



16" 5-spoke alloy wheel. (Option)

