



- Solid body colours**

 - 1 Blazer Blue
 - 2 Colorado Red
 - 3 Frozen White
- Metallic body colours***

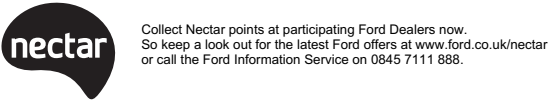
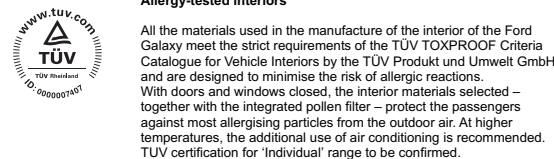
 - 4 Chill
 - 5 Hypnotic Silver
 - 6 Ink Blue
 - 7 Kelp
 - 8 Morello
 - 9 Panther Black
 - 10 Sea Grey
 - 11 Stardust Silver
 - 12 Tango

The Ford Galaxy is covered by the Ford Perforation Warranty for 12 years from the date of first registration. Subject to terms and conditions.
*Metallic body colours are options at extra cost.
Note The car images used are to illustrate body colours only and may not reflect current specification. Colours and trims reproduced within this brochure may vary from the actual colours, due to the limitations of the printing processes used.

MY 2008.5 GBR en

The Government fuel figures do not express or imply any guarantee of the fuel consumption of any particular car. The cars themselves have not been tested and there are inevitably differences between individual cars of the same model. In addition, a car may incorporate particular modifications. Furthermore, the driver's style and road and traffic conditions, as well as the extent to which the car has been driven and the standard of maintenance, will affect its fuel consumption. Insurance groups are only as recommended by the Association of British Insurers. You should always consult your insurance adviser for confirmation. Illustrations, descriptions and specifications. This catalogue was correct at the time of going to print. However, Ford policy is one of continuous product development. The right is reserved to change specifications, colours and prices of the models and items illustrated and described in this publication at any time. For the latest details always consult your Ford Dealer. Optional equipment. Throughout this publication, wherever a feature is described as being an 'Option' or 'Optional Fitment/Track', etc., you should assume that it will be at extra cost to the base vehicle, unless specifically stated to the contrary. All models and colour combinations are subject to availability. *Ford Information Service. Calls are charged at national rate and may be recorded for training purposes. Note The Bluetooth® word mark and logos are owned by the Bluetooth SIG, Inc. and any use of such marks by Ford Motor Company Limited and its associated companies is under licence. Other trademarks and trade names are those of their respective owners.

Note Page 2, Adelphi Hotel Melbourne, © photo Herbert Ypma, from his book Hip Hotels: City, Thames & Hudson Ltd, London.



Published by Ford Motor Company Limited,
Brentwood, Essex, England.
Registered in England No. 235446.
FA 1505/3.
BJN 304869. FoE H30E.
PN 878501/0508/37.3m/GBR en
May 2008
© Ford Motor Company Limited.

www.ford.co.uk
08457 111 888*



FordGalaxy

Feel the difference





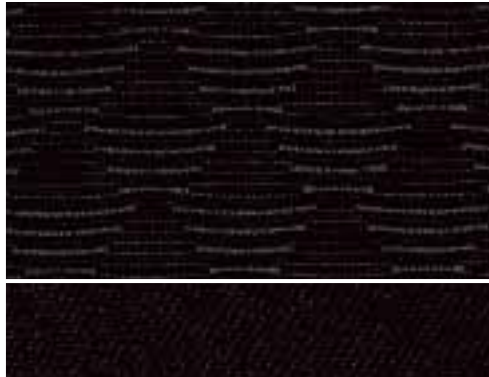
Ink Blue Tria in Ebony seat facing
Twill in Ebony seat sides



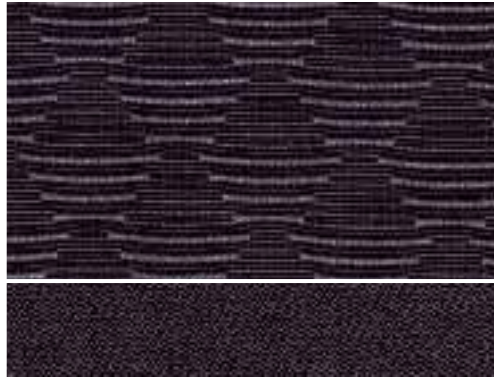
Integrate in Generic Orange seat facing
Twill in Ebony seat sides



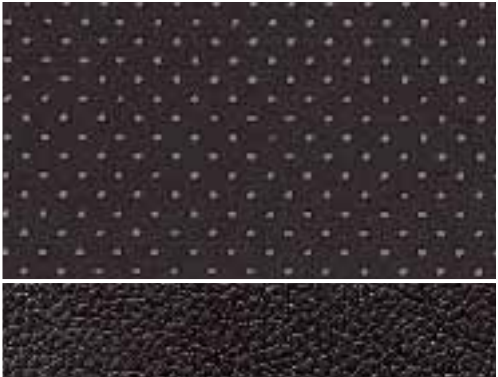
Integrate in Infinity Blue seat facing
Twill in Infinity Blue seat sides



Arasia in Ebony seat facing
Lux in Ebony seat sides



Arasia in Infinity Blue seat facing
Lux in Infinity Blue seat sides



Napoli perforated leather in Charcoal
seat facing**
Napoli leather in Ebony seat sides**

Colour and trim

Model	Edge	Zetec	Ghia						
Seat facing trim and colour	Ink Blue Tria in Ebony	Integrate in Generic Orange	Napoli perforated leather in Charcoal*	Integrate in Infinity Blue	Napoli perforated leather in Infinity Blue*	Arasia in Ebony	Napoli perforated leather in Charcoal*	Arasia in Infinity Blue	Napoli perforated leather in Infinity Blue*
Seat bolster trim and colour	Twill in Ebony	Twill in Ebony	Napoli in Ebony	Twill in Infinity Blue	Napoli in Infinity Blue	Lux in Ebony	Napoli in Ebony	Lux in Infinity Blue	Napoli in Infinity Blue
Door trim insert and colour	Gecko in Infinity Blue	Gecko in Anthracite	Pieno in Ebony	Gecko in Infinity Blue	Pieno in Infinity Blue	Pieno in Ebony	Pieno in Ebony	Pieno in Infinity Blue	Pieno in Infinity Blue
I/P colour: Upper / Lower	Ebony / Ebony	Ebony / Ebony	Ebony / Ebony	Infinity Blue / Pewter	Infinity Blue / Pewter	Ebony / Ebony	Ebony / Ebony	Infinity Blue / Pewter	Infinity Blue / Pewter
Solid body colours									
Colorado Red	●	●	○	-	-	●	○/□	-	-
Blazer Blue	●	●	○	●	○	●	○/□	●	○
Frozen White	●	●	○	●	○	●	○/□	●	○
Metallic body colours*									
Morello	●	●	○	-	-	●	○/□	-	-
Ink Blue	●	●	○	●	○	●	○/□	●	○
Kelp	●	●	○	●	○	●	○/□	●	○
Hypnotic Silver	●	●	○	●	○	●	○/□	●	○
Panther Black	●	●	○	●	○	●	○/□	●	○
Sea Grey	●	●	○	●	○	●	○/□	●	○
Stardust Silver	●	●	○	●	○	●	○/□	●	○
Tango	●	●	○	-	-	●	○/□	-	-
Chill	●	●	○	●	○	●	○/□	●	○

● = Standard, ○ = Option, at extra cost, □ = Part of option pack, at extra cost. *Metallic paint and full leather trim are optional, at extra cost. Please note that when Ghia X Pack or Ghia X Plus Pack are ordered the trim specified is Napoli perforated leather in Charcoal

Napoli perforated leather in Infinity Blue seat facing**
Napoli leather in Infinity Blue seat sides**



Ford Individual two-tone leather in Tan (only available as an option pack, at extra cost) ^{1) 2)}



Ford Individual two-tone leather in Light Beige (only available as an option pack, at extra cost) ²⁾



**Leather trim is an option, at extra cost.

¹⁾ Not available with Colorado Red or Tango.

²⁾ Only available on Ghia as part of Ford Individual Interior Pack and with Ebony instrument panel option, at extra cost

Space exploration

We all like our own space. But there are times when we want to share it. Or perhaps explore ways of making it more comfortable. And there are times when we simply want to make the most of it.

Take this swimming pool, for example. Once an unused rooftop of an upmarket Melbourne hotel. Now, a place to relax and unwind, away from the city below. It's all about stretching the imagination.

In the all new Ford Galaxy, we've brought all this thinking together. We've made it larger and created more luxurious interior space. We've added the very latest innovative technology, and clever design and stowage solutions. So you and your family and friends can travel first class.

Open space

The space to live. The freedom to move. Practicality and beauty effortlessly merged. Ford Galaxy's sleek new styling is a visual expression of its car-like handling and our new design language. We call it energy in motion.



Commanding space

Your space. Your driving experience. The new Ford Galaxy puts you in touch with the space around you, while its high driving position gives you a commanding view of what's ahead.



Centre overhead console

With centre overhead stowage you can even make use of the space above you. (Short console on Edge and Zetec and full-length console on Ghia)



Facia-top stowage

Convenient compartment complete with lid in the centre of the instrument panel is ideal for keeping small items close at hand.



Ford Convers+

This advanced instrumentation provides an exceptional interface between car and driver, with high-quality, easy-to-read graphics on a 5" colour TFT screen. It allows you to control the in-car radio, CD player, and your Bluetooth® enabled mobile phone (mobile phone not included). (Option)



Underseat stowage

Valuable items can be tucked away out of sight, thanks to the innovative stowage beneath the driver's and front passenger's seat. Standard on Ghia; option on Zetec as part of the Traveller Pack. Please note that this feature is not available with navigation systems with external 6CD or MultiMedia DVD system.



Innovative space

Seven full-sized seats and room left over for your luggage. Whether you have a big family, big luggage or just a big passion for space, the all new Ford Galaxy gives every trip a fresh dimension – even with the seven full-sized seats in use.

Leather trim

Enhance the ambience of your Ford Galaxy by choosing this premium quality leather seat trim. (Option)



Memory function

Premium quality leather seat trim (option). Driver and front passenger's 8-way power adjustable seats are now available together as part of the Seat Pack (option) - featuring a memory function for driver's seat with four programmable settings



Ford Fold Flat System (FFS)

For the ultimate in flexible space, each individual rear seat can fold flat without the need for it to be removed – and tabs with magnetic fixings cover the gap between the second and third row of seats, making the load area even easier to use. You can choose from any of 32 different seating combinations to suit your passengers and luggage.



Individual sliding seats

Each seat features fore and aft adjustment, plus an adjustable backrest for enhanced comfort and luxurious personal space.



Personal space

Travel where you want and how you want.
But never give up your home comforts.

MultiMedia DVD system (image on right)

Ford Galaxy's in-car entertainment features a built-in DVD player with two independently-operated 7" screens and two wireless headphones. So even your more demanding passengers can enjoy their own personal space with movies and computer games. (Option)

CD navigation system

The CD-SD navigation system features a 5" full-colour display with colour map and turn-by-turn instructions to your destination. Includes SD memory card slot for data exchange or map data. (Option)

Sony 6CD audio system

With its 6-disc in-dash CD autochanger, the Sony 6CD audio system delivers hours of unbroken, crystal-clear sound. (Option)

Bluetooth® Hands-Free with Voice Control

Bluetooth® wireless technology enables you to make hands-free calls, while the Voice Control technology lets you control your Bluetooth® compatible mobile phone (mobile phone not included), audio, DVD navigation* and climate control (DEATC*) systems with the sound of your voice.

* where specified

DVD navigation system (also image on right)

This advanced system features a 7" touchscreen and colour display for ease of use – plus MP3 capability, and 10 premium speakers (Option)



Freedom of space

With ample head and leg room in all three rows of the adjustable seating, even the longest journeys will see you and your passengers arrive relaxed and refreshed.





Dynamic space

Smooth and graceful, yet dynamic and responsive. The Ford Galaxy offers refined and efficient engines that bring every inch of its space to life. Topping the range is the new 175 PS 2.2 Duratorq TDCi diesel that develops an impressive 400 Nm of torque for powerful acceleration and confident cruising.



Interactive Vehicle Dynamic Control (IVDC) with continuously controlled damping

Ford Galaxy's new Interactive Vehicle Dynamic Control (IVDC) with Continuously Controlled Damping (CCD) delivers notable improvements to handling, stability and braking performance. Each damper is adjusted five times per second to guarantee the best possible interaction between occupant comfort and road contact. You can also select the suspension setting of your choice, switching between sport, normal and comfort mode as the mood takes you. (Option)



6-speed Durashift automatic transmission

This advanced automatic transmission includes a 'Sportsmode', allowing gears to be manually selected for a more involved driving experience. (Option)





Protective space

We want you to feel secure in your space. So we've introduced the world-class Ford Intelligent Protection System (IPS) to make sure you're protected wherever you choose to venture.



Intelligent Protection System

Should there be any unwelcome surprises, Ford Galaxy's Intelligent Protection System (IPS) is ready to respond in an instant. A comprehensive airbag system includes driver's and front passenger's airbags*, side airbags, full length (first, second and third row) curtain airbags and an innovative driver's knee bolster airbag.

Three-point seat belt pre-tensioners work in harmony with the airbag system, while a steel safety cage, side impact door beams and collapsible steering column and pedals deliver the ultimate protection in the event of

an impact. For your little travellers, Ford Galaxy comes with ISOFIX child seat attachments. These are located on the two outer seats of the second row.

The new Ford Galaxy builds on Ford's established reputation for safety and security, recording a maximum '5-star' Adult Occupant Rating in Euro NCAP crash tests.

***Note:** A child seat should never be placed in the front passenger seat when the Ford vehicle is equipped with an operational front passenger's airbag. The safest place for children is properly restrained on the second row seats.

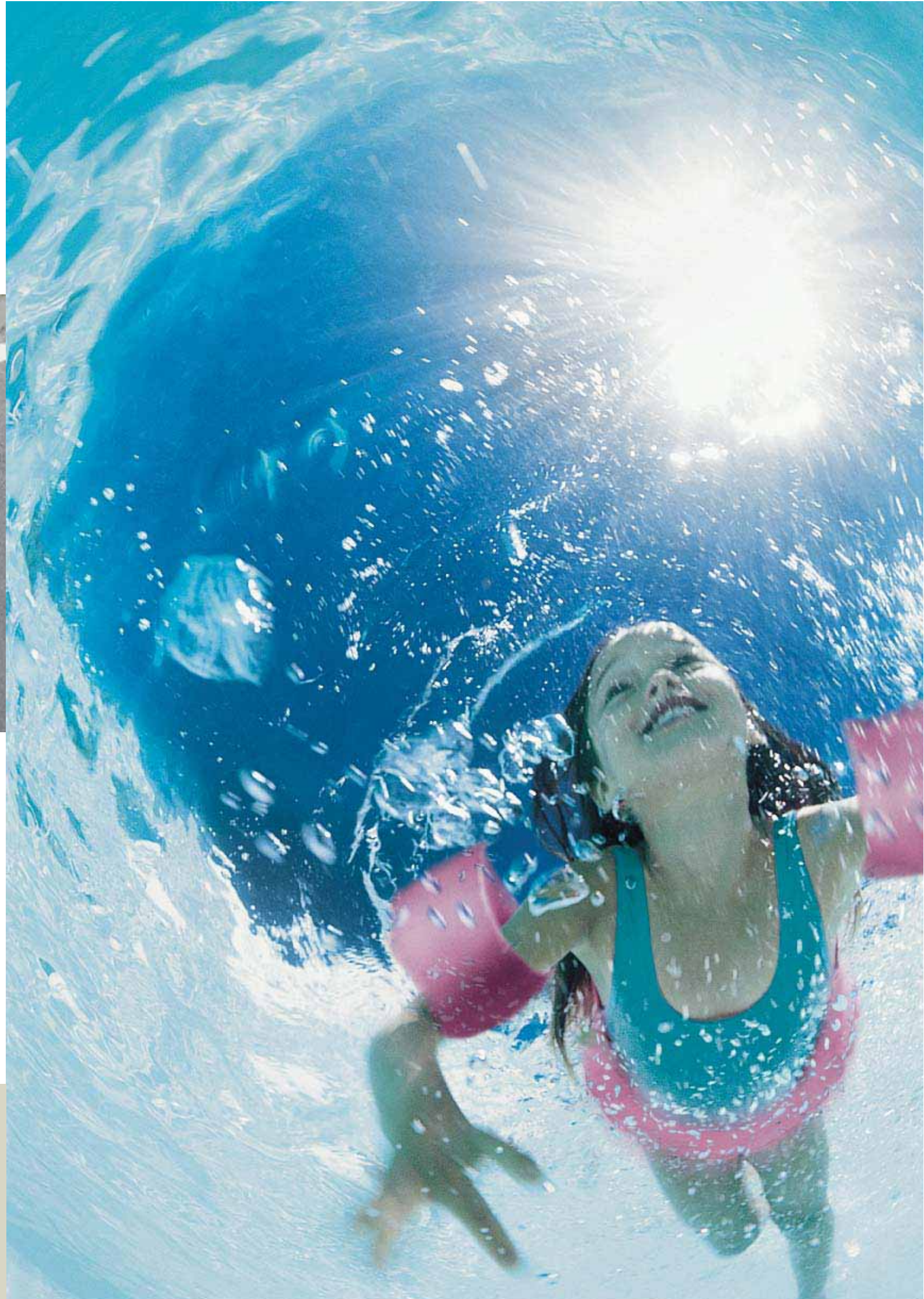
Driver's knee airbag

The driver's knee bolster airbag helps prevent injuries through contact with the steering column.



Adaptive Cruise Control (ACC) with Forward Alert (FA)

Adaptive Cruise Control (ACC) lets you set the pace – and automatically decelerates to keep your chosen distance if the vehicle ahead of you is travelling slower than your set speed. Forward Alert (FA) offers an audible and visual warning when there's a risk of colliding with the vehicle in front. At the same time, Emergency Brake Assist (EBA) prepares the brakes to facilitate full braking performance by increasing pressure within the brake system. (Option)



Choose your model



Edge

- Key features include:**
- 16" steel wheels with wheelcovers
 - Advanced Bluetooth® Hands-Free and Voice Control System
 - Air conditioning
 - Power-operated and heated door mirrors
 - Power-operated front windows
 - Stereo CD/radio
 - Steering wheel toggle controls
 - Electronic Stability Programme (ESP)
 - 'Quickclear' heated front windscreen
 - Front fog lights
 - Remote control central locking
 - 7 individual seats with Ford FoldFlatSystem (FFS)
 - Integrated C-channels for secure installation of roof transportation systems
 - Privacy glass

For full details, please see specifications section at the back of the brochure.



Zetec

- Key features include:**
- 16" alloy wheels
 - Dual-zone Electronic Automatic Temperature Control (DEATC)
 - Driver's seat power height adjustment with manual adjustable lumbar support
 - Power-operated front and rear windows with global opening/closing
 - 'Park Assist' - front and rear sensors
 - Thatcham Category 1 Alarm
 - Leather-trimmed steering wheel and gear knob

For full details, please see specifications section at the back of the brochure.



Human Machine Interface (HMI) with standard cluster display

The right-hand steering wheel-mounted toggle switch lets you move easily through the menus that are shown on the cluster display, providing simple, logical control of the vehicle settings and trip computer.



Dual-zone Electronic Automatic Temperature Control (DEATC)

Can be adjusted separately for the driver and front passenger, with up to 6°C variation from side to side. Standard on Ghia and Zetec; option on Edge as a single option or as part of optional DVD Navigation



Ghia

Key features include:

- 17" 10-spoke alloy wheels
- Leather-trimmed steering wheel, gear knob and handbrake grip
- Chrome-finish door handle inserts, upper doorline strip and front scuff plates
- Automatic headlights
- Autowipers, with rain sensor
- 'Quickclear' heated windscreen
- Auto-dimming rear-view mirror
- Cruise control
- Rear compartment air conditioning
- Full-length overhead console, including child observation mirror
- Power-operated and heated door mirrors with side turn indicators and puddle lights

For full details, please see specifications section at the back of the brochure.



Climate front seats

Experience a higher level of comfort with individually-controlled climate front seats – keeping you as warm or cool as you want to be, at the touch of a button. (Option)

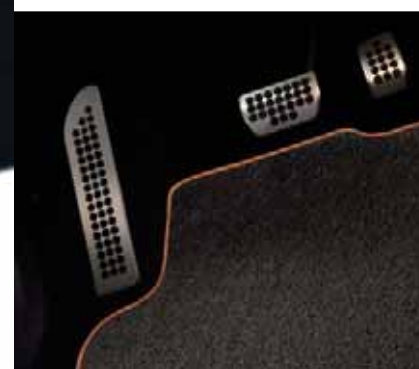




Ford Galaxy Individual

You are looking for something a little different. A place of tranquility and comfort. And the opportunity to stand out of the crowd. That's why our designers have created Ford Galaxy Individual, a unique, premium-quality styling package that lets you create a space you can truly call your own. Available in two attractive and distinctive colour schemes that create an interior that is as rewarding to the touch, as it is to the eye.

Craftsmanship and attention to detail is clearly evident in the luxurious leather seats with Ford Individual script. Additional options include sporty alloy pedals, unique stainless steel scuff plates with an etched Ford Individual script and deep, thick luxury floor mats that feature a colour-coordinated surround.



Leather trim

Unique premium leather seats with two-tone Nappa leather and a mix of different leather textures are available in either Tan or Light Beige.

Please see the Ford Galaxy Individual brochure for further details.

Ford Individual Interior Pack

(Available for Ford Galaxy Ghia only*)

- Unique premium Nappa leather seats with Ford Individual script (first and second rows). Offered in two versions, Tan or Light

- Beige, with coordinating leather door panel inserts, armrest and gearshift gaiter
- Unique luxury velour floor mats with colour-coordinated surround
- Unique stainless steel scuff plates with Ford Individual script
- Alloy pedal cover set

- Heated front seats
- 8-way power-operated driver's and front passenger's seats
- Memory function for driver's seat and door mirrors

*Not available with climate seats, Ghia X Pack, or Ghia X Plus Pack.

The striking 17" 10-spoke alloy wheel
Standard on Ghia or optional with run-flat tyres on Zetec and Edge



Wheels

Each distinctive wheel enhances Ford Galaxy's sleek design.

16" 7x2-spoke wheel cover
(Standard on Edge)



16" 5-spoke alloy wheel.
Standard on Zetec.

16" multi-spoke alloy wheel
(accessory)



17" 5-spoke machined
finish alloy wheel. Available
as an option or accessory.
Also available as an
accessory in silver painted
finish.

17" 9-spoke alloy wheel.
(accessory)



18" Y-spoke alloy wheel.
Available as part of the
optional Ghia X Plus Pack
and as an accessory.

Ford Individual 17" 5-spoke
Mystique Silver painted
alloy wheel (accessory)



Ford Individual 18" 5-spoke
Mystique Silver painted
alloy wheel (accessory)

Standard = Standard on your vehicle.
Option = Can be ordered only together
with your new vehicle.
Accessory = Available from your Ford
Dealer.



Personalise

Your Ford Galaxy will soon become your individual space for family transport and leisure. Use the wide range of accessories to personalise your car.



Thule roof box

Different sized boxes protect your luggage from weather and theft (Accessory). Shown in conjunction with sliding **crossbars**. (Option and accessory)



ClimAir® wind deflector

Reduces turbulence and noise, allowing you a more enjoyable drive with the front windows down, even when it's raining. (Accessory)



Dog guard system

Robust, full-height dog guard system keeps dogs or items of luggage safely away from the passengers. Two versions available (one version is fixed behind the front seats and the other version is fixed behind the second row of seats). Meets European ECE-R17 safety requirements. (Option and accessory)



Puddle lights

Illuminate the ground when the front doors are opened or unlocked. (Standard on Ghia and an option on Zetec)

Thule ski/snowboard carrier

Innovative, fully-lockable ski carrier suitable for up to six pairs of skis. Comfortable slide-out function for easy access to your ski equipment. (Accessory)



Activity Kit

Using a series of aluminium bars and special attachments that can be fitted in the rear, this innovative kit allows items to be securely locked in place. From bikes and scuba gear to coolboxes and skis, the only limit is your imagination. (Option and accessory)

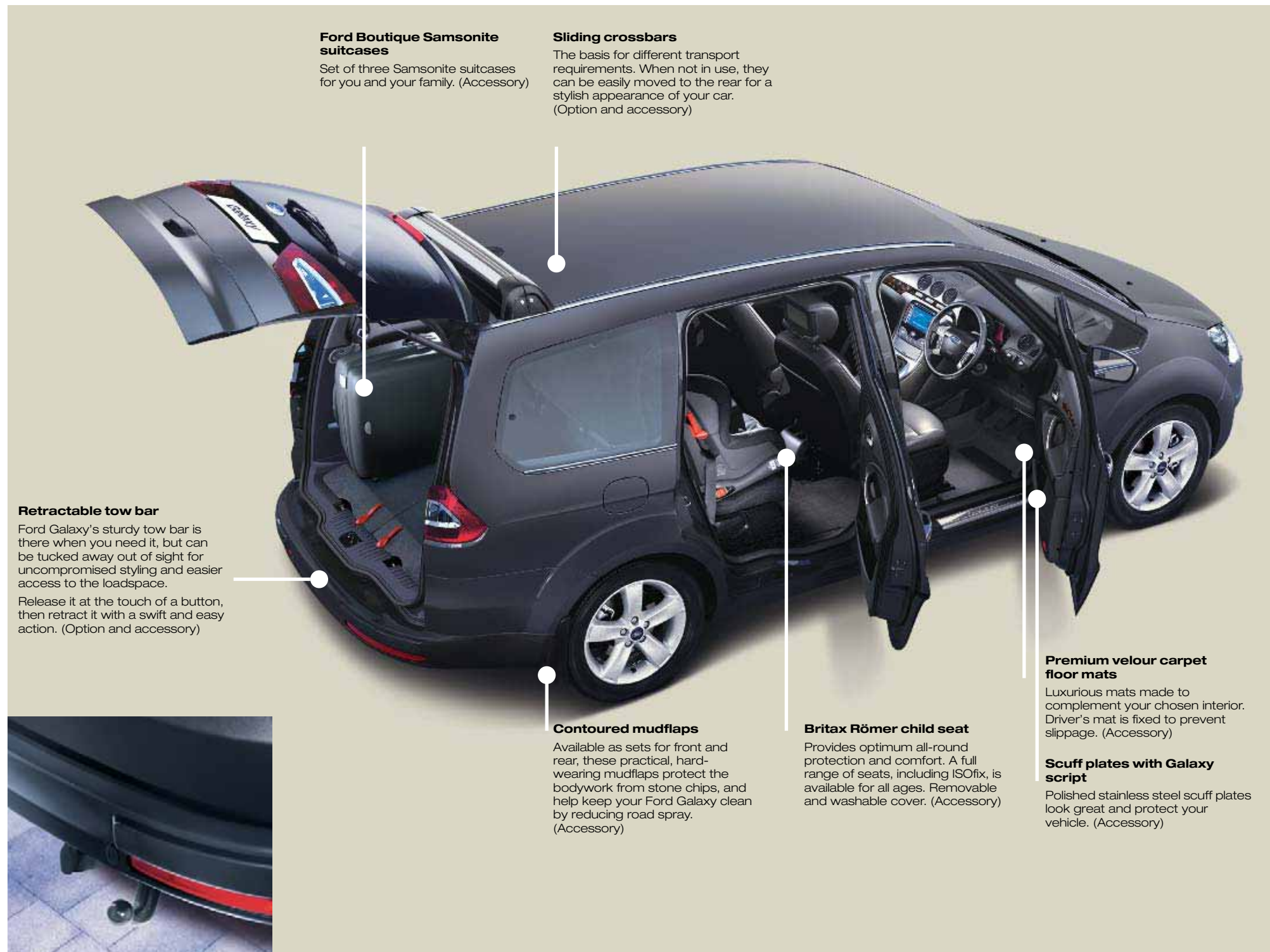


Ford Boutique Samsonite suitcases

Set of three Samsonite suitcases for you and your family. (Accessory)

Sliding crossbars

The basis for different transport requirements. When not in use, they can be easily moved to the rear for a stylish appearance of your car. (Option and accessory)



Retractable tow bar

Ford Galaxy's sturdy tow bar is there when you need it, but can be tucked away out of sight for uncompromised styling and easier access to the loadspace.

Release it at the touch of a button, then retract it with a swift and easy action. (Option and accessory)



Contoured mudflaps

Available as sets for front and rear, these practical, hard-wearing mudflaps protect the bodywork from stone chips, and help keep your Ford Galaxy clean by reducing road spray. (Accessory)

Britax Römer child seat

Provides optimum all-round protection and comfort. A full range of seats, including ISOfix, is available for all ages. Removable and washable cover. (Accessory)

Premium velour carpet floor mats

Luxurious mats made to complement your chosen interior. Driver's mat is fixed to prevent slippage. (Accessory)

Scuff plates with Galaxy script

Polished stainless steel scuff plates look great and protect your vehicle. (Accessory)

We are all beginning to understand the impacts that mobility is having on climate change. While we can't change things overnight, we are working very hard to find solutions.

Our range of finance, insurance, service and assistance options is designed with just one thing in mind – making life easy for you.

Making a difference

On Ford Focus, Ford C-MAX, Ford Mondeo, Ford S-MAX and Ford Galaxy, our optional Flexifuel engine, fuelled by E85, is achieving emission reductions of around 30% to 80%** compared to conventional petrol engines. E85 is a mixture of 85% plant-derived ethanol and 15% petrol, but these models can run on any mixture of the two – even 100% petrol.

On Ford Focus and Ford Mondeo, new low emission diesel ECONetic derivatives are now available. Ford Focus ECONetic delivers more than 65 mpg, emitting just 115 g/km of CO₂ and Ford Mondeo ECONetic delivers more than 53 mpg on 5-door, emitting 139 g/km of CO₂.

Protecting the future

Using our Product Sustainability Index, a design for sustainability management tool, we are addressing the environmental, social and economic impacts of our vehicles from the earliest stages of their development*.

We are working on a wide range of vehicle technologies from biofuels to hybrids and clean diesels, and in the long term to hydrogen fuel-cell technology with the potential for near zero CO₂ emissions.

Improving our manufacturing facilities

Elsewhere, we are working to minimise the impact of our facilities on the environment, for example by pioneering on-site generation of electricity from sun and wind.

Breathe easier

The allergy-tested interiors of Ford Ka, Ford Focus, Ford C-MAX, Ford Mondeo, Ford S-MAX and Ford Galaxy models were the first worldwide to receive the approval of the independent German TÜV organisation, and are endorsed by the British Allergy Foundation.

Recycling for good

In the interests of sustainability, many of our components contain recycled and renewable content. All Ford vehicles are at least 85% recyclable and 95% recoverable in accordance with ISO 22628. We offer free take-back for qualifying vehicles at the end of their lives. All our take-back points are fully licensed and must also meet additional Ford quality standards for the professional receipt, treatment and recovery of end-of-life vehicles.

This brochure has been produced on paper based on fibres from sustainable forestry, using a 100% chlorine-free (TCF) bleaching process.

*For more about this topic, see www.ford.com
**Dependent on feedstock used and production process. (Source: EUCAR CONCAWE study.) Ford supports the sustainable production of biofuels.

Ford Credit

Your local Ford Dealer can offer simple, plain language advice on the various ways of financing your purchase. They can help you complete an application and get a decision, usually within 15 minutes. For further details, visit www.ford.co.uk or contact your Ford Dealer.

Ford Options is the flexible plan if you want to change your car more often.

Ford Acquire is a straightforward plan for private customers and business users who want to own their cars outright.

Ford Business Partner provides dedicated advice for businesses that need a complete Contract Hire solution.

Ford Insure is a wide range of vehicle insurance products. When you purchase a Ford from a Ford Dealer, call us for a no-obligation quotation and we'll give you 7 days' free Driveaway cover*.

*Ford Insure may decline to quote in some circumstances, meaning that the 7 days' Driveaway cannot be given. Ford Insure is underwritten and administered by Norwich Union Insurance Limited. Registered in England No. 99122. Registered Office: 8 Surrey Street, Norwich NR1 3NG. Authorised and regulated by the Financial Services Authority. Quotations are valid for 60 days. Offer can be withdrawn at any time.

Services

Ford Protect

Your new Ford is protected by a 3-year/60,000-mile Ford Protect Classic Plan Warranty, and comes with Ford Assistance roadside cover throughout the UK and Europe for 1 year. You can also upgrade to a Ford Protect Premium Plan, giving you the option of scheduled servicing and extended Ford Assistance.

Ford Service

Like any vehicle, your new Ford needs servicing regularly to keep it in the best condition and to maintain its value. The Ford authorised repairer network is independently quality checked to ensure the highest standards of workmanship are maintained. Ford has the largest repairer network in the UK, and uses Ford-trained technicians, Ford-specific tools and the latest computerised diagnostic equipment specifically for your Ford.

Ford Accident Repair Centres

Should your Ford require accident repair, an approved Ford Accident Repair Centre is the best place to return your vehicle to its pre-accident condition. Repairers displaying the Ford Accident Repair Centre sign meet the rigorous customer service, technical and quality standards demanded by Ford. Ford trained technicians, the latest repair equipment and the use of original parts mean that the future safety and value of your vehicle are assured.

Contacts

Ford Customer Relationship Centre

In the unlikely event that your Ford Dealer can't help you or if you need to speak to us directly, call 0845 841 1111 at local rates.

Ford Rental – local service nationwide

Car and van rental from our latest model range. Contact your local Ford Dealer for more information.

Talkback – the company car drivers' club

This is your club for extended test drives, special events, and advice on tax and buying issues. Join free, even if you don't drive a Ford, on www.talkbackclub.com or call 0845 605 55 66.

Ford Mobility

Our MAGIC care centre provides free information on all motoring and mobility issues, including special offers for HRDLA and Motability recipients. Call free on 0800 240 241.

Specification

Exterior dimensions

	Galaxy
Exterior (mm)	
Overall length without towbar	4820
Overall length with towbar	4921
Overall width without mirrors	1884
Overall width with mirrors	2154
Overall height (unladen)	1764-1807
Wheelbase	2850
Front overhang	918
Rear overhang	1052
Front tread	1578
Rear tread	1600

Interior dimensions

	Galaxy
Front (mm)	
Headroom	1056
Maximum effective leg room	1088
Shoulder room	1531
2nd row (mm)	
Headroom	1022
Minimum effective leg room	991
Shoulder room	1535
3rd row (mm)	
Headroom	975
Minimum effective leg room	887
Shoulder room	1359
Luggage area (mm)	
Maximum cargo height	964
Maximum cargo width	1215
Maximum cargo width between wheel arches	1146
Maximum cargo length to back of 3rd row seats	557
Minimum cargo length to back of 3rd row seats	397
Maximum cargo length to back of 2nd row seats	1306
Minimum cargo length to back of 2nd row seats	1156
Maximum cargo length to back of front seats	2095
Stowable luggage (litres)†	
7-seat mode (laden to top of seat) (min./max.)	308/435
5-seat mode (laden to roof) (min./max.)	1130/1260
2-seat mode (laden to roof)	2325

† Measured using the VDA method. Dimensions may vary dependent on the model and equipment fitted.

Engine data

	Engine technical features	Maximum power [®]	Maximum torque [®]
2.0 Duratec 1999 cc	4 cylinders in line; DOHC; 16 valves; variable intake system; alloy cylinder head and block; electronic multipoint fuel injection	107 kW (145 PS) at 6000 min ⁻¹ (rpm)	190 Nm at 4500 min ⁻¹ (rpm)
2.0 Duratec Flexifuel (FFV) 1999 cc	4 cylinders in line; DOHC; 16 valves; variable intake system; alloy cylinder head and block; electronic multipoint fuel injection	107 kW (145 PS) at 6000 min ⁻¹ (rpm)	190 Nm at 4500 min ⁻¹ (rpm)
2.3 Duratec 2261 cc	4 cylinders in line; DOHC; 16 valves; intake variable cam timing; alloy cylinder head and block; electronic multipoint fuel injection; dual mass flywheel	118 kW (161 PS) at 6500 min ⁻¹ (rpm)	208 Nm at 4000 min ⁻¹ (rpm)
1.8 Duratorq TDCi Euro IV Diesel 1753 cc	4 cylinders in line; SOHC; 8 valves; cast iron head and block; direct injection with high pressure, common-rail, multipoint fuel injection system; electrically actuated variable geometry turbocharger with intercooler and transient torque overboost function; electronic-EGR; dual-mass flywheel	74 kW (100 PS) at 3850 min ⁻¹ (rpm)	280 / 300* Nm at 1750 min ⁻¹ (rpm)
1.8 Duratorq TDCi Euro IV Diesel 1753 cc	4 cylinders in line; SOHC; 8 valves; cast iron head and block; direct injection with high pressure, common-rail, multipoint fuel injection system; electrically actuated variable geometry turbocharger with intercooler and transient torque overboost function; electronic-EGR; dual-mass flywheel	92 kW (125 PS) at 3700 min ⁻¹ (rpm)	320 / 340* Nm at 1750 min ⁻¹ (rpm)
2.0 Duratorq TDCi Euro IV Diesel 1997 cc	4 cylinders in line; DOHC; 16 valves; alloy cylinder head; direct injection with high-pressure, common-rail, multipoint fuel injection; variable geometry turbocharger with intercooler and transient torque overboost function; electronic throttle; dual-mass flywheel	103 kW (140 PS) at 4000 min ⁻¹ (rpm)	320 / 340* Nm at 2000 min ⁻¹ (rpm)
2.0 Duratorq TDCi Euro IV Diesel 1997 cc	4 cylinders in line; DOHC; 16 valves; alloy cylinder head; direct injection with high-pressure, common-rail, multipoint fuel injection; variable geometry turbocharger with intercooler and transient torque overboost function; diesel particulate filter (automatic transmission only); electronic throttle; dual-mass flywheel	103 kW (140 PS) at 4000 min ⁻¹ (rpm)	320 / 340* Nm at 2000 min ⁻¹ (rpm)
2.2 Duratorq TDCi Euro IV Diesel 2179 cc	4 cylinders in line; DOHC; 16 valves; alloy cylinder head; direct injection with high-pressure, common-rail, multipoint fuel injection; variable geometry turbocharger with intercooler and transient torque overboost function; diesel particulate filter; electronic throttle; dual-mass flywheel	129 kW (175 PS) at 3500 min ⁻¹ (rpm)	400 Nm at 1750 - 2750 min ⁻¹ (rpm)

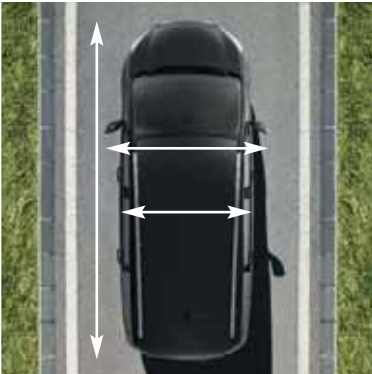
[®]Tested in accordance with ISO 1585. **EGR** = Exhaust Gas Recirculation. *With transient overboost. All figures quoted above are final homologation figures only.

Fuel, performance and emissions

	Stage	Derivative(s)	CO ₂ emissions (g/km) [®]	Fuel consumption in L/100 km (mpg) [®]			Performance [®]		
				Urban	Extra Urban	Combined	Max. speed (mph)	0-60 mph (secs)	30-60 mph* (secs)
Ford Galaxy									
2.0 Duratec (145 PS)	Stage IV	Edge, Zetec, Ghia	197	11.2 (25.2)	6.5 (43.5)	8.2 (34.4)	121	10.7	15.5
2.0 Duratec FFV ¹⁾ (145 PS)	Stage IV	Edge, Zetec, Ghia	197	11.2 (25.2)	6.5 (43.5)	8.2 (34.4)	121	10.7	15.5
2.3 Duratec (161 PS), Durashift 6-speed automatic	Stage IV	Edge, Zetec, Ghia	235	13.8 (20.5)	7.5 (37.7)	9.8 (28.8)	118	11.1	n/a
1.8 Duratorq TDCi (100 PS)	Stage IV	Edge	165	8.0 (35.3)	5.3 (53.3)	6.3 (44.8)	106	13.8	13.6
1.8 Duratorq TDCi (125 PS)	Stage IV	Edge, Zetec	165	8.0 (35.3)	5.2 (54.3)	6.2 (45.6)	114	11.4	12.8
1.8 Duratorq TDCi (125 PS), Durashift 6-speed manual	Stage IV	Edge, Zetec, Ghia	166	8.0 (35.3)	5.3 (53.3)	6.3 (44.8)	116	11.3	10.7
2.0 Duratorq TDCi (140 PS), Durashift 6-speed automatic	Stage IV	Edge, Zetec, Ghia	196	10.0 (28.2)	5.9 (47.9)	7.4 (38.1)	118	11.4	n/a

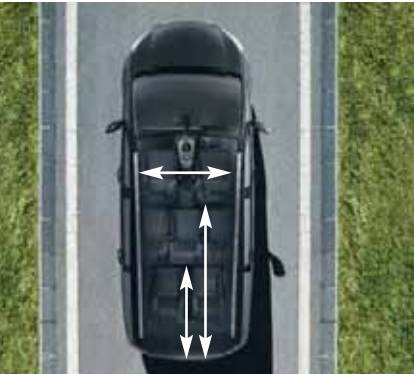
Exterior dimensions

Ford Galaxy is accommodating when it comes to your passengers and luggage, while its lower stance gives it a more streamlined shape.



Interior dimensions

More spacious, more flexible. Ford Galaxy's designers have put every inch of the extra space to good use – so that you can too.



Duratorq TDCi diesel engine

The 1.8, 2.0 and new 2.2-litre Duratorq TDCi engines have an overboost feature for extra acceleration during overtaking – plus, for those in need of even more pulling power, the 2.2-litre unit provides up to 400 Nm of peak torque.



Coated Diesel Particulate Filter (C-DPF)

The 2.0-litre Duratorq TDCi diesel engine with 6 speed automatic is available with a new maintenance-free coated diesel particulate filter. The internal surface of the filter is coated with a catalyst to oxidise exhaust particulates, eliminating the need for a liquid additive.

Specification

Fuel, performance and emissions

	Stage	Derivative(s)	CO ₂ emissions (g/km) ⁸⁰	Fuel consumption in L/100 km (mpg) ⁸⁰			Performance ⁹		
				Urban	Extra Urban	Combined	Max. speed (mph)	0-60 mph (secs)	30-60 mph* (secs)
2.0 Duratorq TDCi (140 PS), Durashift 6-speed manual	Stage IV	Edge, Zetec, Ghia	165	8.0 (35.3)	5.2 (54.3)	6.2 (45.6)	120	10.0	9.6
2.2 Duratorq TDCi (175 PS), Durashift 6-speed manual	Stage IV	Ghia	179	9.1 (31.0)	5.3 (53.3)	6.7 (42.2)	129	9.1	7.6

*In 4th gear. ⁹Ford test figures. ⁸⁰All CO₂ emissions figures in g/km and fuel consumption figures in L/100 km are from officially approved tests in accordance with 80/1268/EEC as amended. The CO₂ emissions and fuel consumption test figures shown in the chart do not express or imply any guarantee of the fuel consumption of a car of the class in question (see back cover). All the figures are based on tests conducted on vehicles with Edge equipment level and with standard wheels and tyres; optional or accessory wheels and tyres may have an effect on the emissions and fuel consumption of a vehicle. **Urban** An engine started from cold in laboratory conditions operated at varying speeds, maximum 50 km/h, average 19 km/h over a theoretical distance of 4 km. **Extra Urban** Conducted immediately after the urban cycle, it consists of half steady speed driving and half varying speed driving, maximum 120 km/h over a distance of 7 km. **Combined** This is an average of the two parts of the test, weighted by the distances covered in each part. **Note** All vehicles are 5-speed Durashift manual unless stated. All petrol engines are equipped with a catalytic converter. ¹⁾ The fuel economy data published above relate to use of petrol 95 RON; use of alcohol fuel or a mixture of petrol and alcohol will lead to other fuel economy data.

Model availability, weights and loads

	Kerbweight (kg) ⁸	Gross Vehicle Mass (kg)	Max. Towable Mass (kg)	Payload (kg) ⁸⁰
Ford Galaxy				
2.0 Duratec	1697	2415	1100	718
2.0 Duratec FFV	1697	2415	1100	718
2.3 Duratec, Durashift 6-speed automatic	1734	2465	1250	731
1.8 Duratorq TDCi (100 PS)	1793	2505	1400	712
1.8 Duratorq TDCi (125 PS)	1793	2505	1400	712
1.8 Duratorq TDCi (125 PS), Durashift 6-speed manual	1807	2505	1400	698
2.0 Duratorq TDCi (140 PS), Durashift 6-speed automatic	1835	2505	1750	670
2.0 Duratorq TDCi (140 PS), Durashift 6-speed manual	1806	2505	1750	699
2.2 Duratorq TDCi (175 PS), Durashift 6-speed manual	1840	2505	1800	665

⁸Represents the lightest kerbweight assuming the driver at 75 kg, full fluid levels and 90% fuel levels, subject to manufacturing tolerances and options fitted. ⁸⁰Payload = Gross vehicle mass less kerbweight. **Note** All vehicles are 5-speed Durashift manual unless stated. All petrol engines are equipped with a catalytic converter. **Towing limits** quoted represent the maximum towing ability of the vehicle at its Gross Vehicle Mass to restart on a 12 per cent gradient at sea level. The performance and economy of all models will be reduced when used for towing. **Nose weight limit** is a maximum of 90 kg on all models. All figures quoted are final homologation figures only.

Mechanical features

	Edge	Zetec	Ghia
Brakes & vehicle control			
Disc brakes – Front and rear (ventilated front, solid rear)	●	●	●
Anti-lock brakes (ABS) with Electronic Brake-force Distribution (EBD)	●	●	●
Electronic Stability Programme (ESP) with Traction Assist and Emergency Brake Assist (EBA)	●	●	●
Interactive Vehicle Dynamics Control (IVDC) with Continuous Controlled Damping (CCD) and Hill Launch Assist (not available with sport suspension or self-levelling rear suspension)	○	○	○
Adaptive Cruise Control (ACC) with Forward Alert (FA) and Hill Launch Assist		○	○
Electric Parking Brake (EPB)	○	○	○
Emergency (Hazard Warning) Brake Lights	●	●	●

Mechanical features

	Edge	Zetec	Ghia
Fuel tank			
70 litres (useable capacity)	●	●	●
Steering			
Hydraulic Power-Assisted Steering (HPAS) (except 2.0 Duratorq TDCi)	●	●	●
Electric Hydraulic Power-Assisted Steering (EHPAS) (2.0 Duratorq TDCi only)	●	●	●
Suspension and body			
Front – Independent with MacPherson struts, angled coil/spring damper units and lower A-arms, anti-roll bar	●	●	●
Rear – Independent Control Blade multi-link system, anti-roll bar	●	●	●
Rear – Self-levelling (not available with IVDC, sports suspension or fixed towbar)	○	○	○
Suspension – Sports (not available with IVDC or self-levelling rear suspension)	○	○	○
Turning circle			
Kerb to kerb – 11.9 m	●	●	●

● = Standard, ○ = Optional, at extra cost, □ = Part of option pack, at extra cost

Insurance groups

	Edge	Zetec	Ghia
Ford Galaxy			
2.0 Duratec (145 PS)	11E	11E	11E
2.0 Duratec FFV (145 PS)	11E	11E	11E
2.3 Duratec (161 PS), Durashift 6-speed automatic	11E	11E	11E
1.8 Duratorq TDCi (100 PS)	10E		
1.8 Duratorq TDCi (125 PS)	10E	10E	
1.8 Duratorq TDCi (125 PS), Durashift 6-speed manual	10E	10E	10E
2.0 Duratorq TDCi (140PS), Durashift 6-speed automatic	11E	11E	11E
2.0 Duratorq TDCi (140 PS), Durashift 6-speed manual	11E	11E	11E
2.2 Duratorq TDCi (175 PS), Durashift 6-speed manual			12E

E = Exceeds security requirement for model concerned and group rating has been reduced.

Safety and security

	Edge	Zetec	Ghia
Safety			
Intelligent Protection System (IPS):			
Airbags – Driver's and front passenger's*	●	●	●
Airbags – Front side impact, driver's and front passenger's	●	●	●
Airbags – Front, 2nd and 3rd row, side curtain airbags deployed from the headlining	●	●	●
Airbags – Driver's knee bolster airbag	●	●	●
Seat belts – 3-point seat belts with pre-tensioners and retractors (front seats only)	●	●	●
Seat belts – Front, height adjustable mounts	●	●	●

Adaptive Cruise Control (ACC) with Forward Alert (FA)

A clever combination of cruise control and distance control. Simply enter the desired speed and distance from the vehicle in front, and ACC will automatically maintain the set distance if traffic conditions do not allow travel at the desired cruising speed. Forward Alert (FA) offers an audible and visual warning when there's a risk of colliding with the vehicle in front. At the same time, Emergency Brake Assist (EBA) prepares the brakes to facilitate full braking performance by increasing pressure within the brake system. (Option)



Hill Launch Assist

After releasing the brake pedal when stationary, the system keeps the wheels braked, leaving you enough time to move your foot from the brake pedal to the accelerator without the car rolling backwards. Included as part of the Adaptive Cruise Control (ACC) or Interactive Vehicle Dynamics Control (IVDC) options.



Tyre Pressure Monitoring System (TPMS)

Allows you to monitor tyre pressure while on the move. System alerts you if a tyre's pressure is too low or if the vehicle suffers a puncture. (Option; also included with optional run-flat tyres)

Specification

Safety and security

	Edge	Zetec	Ghia
Collapsible steering column and pedals	●	●	●
Seats – ISOFIX attachments for child seat (outer seats on 2nd row only)	●	●	●
Passenger Airbag Deactivation Switch - Dealer fitted	○	○	○
Security			
Vehicle Identification Number (VIN) – Visible	●	●	●
Immobiliser – Passive Anti-Theft System (PATS)	●	●	●
Fuel flap – Central locking linked	●	●	●
Locks – High-security, anti-burst, shielded with strengthened mountings and childproof locks on rear doors	●	●	●
Locks – Remote control central double locking	●	●	●
2nd remote key		●	●
Alarm – Perimeter with volume sensing (Thatcham Category 1)	○	●	●

***Note: A child seat should never be placed in the front passenger seat when the Ford vehicle is equipped with an operational front passenger's airbag. The safest place for children is properly restrained on the second row seats.**

Wheel availability

	Edge	Zetec	Ghia
6½x16" steel with 7-spoke wheelcovers and 215/60 Rx16 tyres	●		
6½x16" 5-spoke alloy with 215/60 Rx16 tyres		●	
7x17" alloy; 10-spoke with 225/50 Rx17 tyres			●
7x17" 5-spoke alloy machined with 225/50 Rx17 tyres		○	
8x18" 5-spoke alloy with 235/45 Rx18 tyres. Included as part of Ghia X Plus Pack			□
7x17" alloy; 10-spoke with 225/50 Rx17 run-flat tyres and Tyre Pressure Monitoring System	○	○	○
Locking wheel nuts (only available with alloy wheels)		●	●
Tyre Pressure Monitoring System. Included on any vehicle specified with run-flat tyres	○ / □	○ / □	○ / □

● = Standard, ○ = Optional, at extra cost, □ = Included with another feature or part of an option pack, at extra cost

Exterior features

	Edge	Zetec	Ghia
Styling			
Bodyside mouldings – Body colour	●	●	●
Bumper – Front, body colour, with integrated rub strips	●	●	●
Door handles – Body colour		●	
Door handles – Body colour, with chrome insert			●
Paint – Metallic	○	○	○
Panorama roof – Fixed glass with infra-red protection and manual sunblinds (includes full length overhead console, child observation mirror and illuminated sunvisor vanity mirrors). Included as part of Ghia X Pack and Ghia X Plus Pack	○	○	○ / □
Radiator grilles – Black mesh with chrome finish on upper grille surround and body colour lower grille surround	●	●	●
Chrome finish on upper doorline			●

Exterior features

	Edge	Zetec	Ghia
Functional			
Door mirrors – Electrically-operated and heated, body colour housings, with side turn indicators and, on Ghia, puddle lights	●	●	●
Door mirrors – Electrically-operated and heated, body colour housings, power folding with side turn indicators and puddle lights		○ / □	○ / □
Heated rear window	●	●	●
Heated windscreen – ‘Quickclear’	●	●	●
Electronic tailgate release	●	●	●
Glass – Privacy, dark tinted (rear side windows only)	●	●	●
'Park Assist' – Front and rear sensors	○	●	●
Roof carrier system (C-track) – Chrome finish with black caps	●	●	●
Sliding cross bars for roof carrier system (C-track) – Aluminium bars with black feet (supplied with the vehicle but not factory-fitted)	○	○	○
Towbar – Fixed (including 13-pin electrical kit) (not available with self-levelling rear suspension)	○	○	○
Towbar – Retractable (including 13-pin electrical kit)	○	○	○
Windscreen – Solar Reflect Windshield			●
Wipers – Front, variable intermittent with electric wash	●	●	
Wipers – Autowipers, with rain sensor			●
Wipers – Tailgate, intermittent with electric wash and auto reverse wipe	●	●	●

Lights			
Halogen Adaptive Front Lighting System with static cornering lamps	○	○	○
Bi-Xenon Front Lighting System with static cornering lamps, automatic headlight levelling and washer jets. Included as part of Ghia X Plus Pack		○	○ / □
Automatic headlights			●
'Home-safe' headlights	●	●	●
Front fog lights	●	●	●
Rear fog lights, reversing light, high-mounted rear brake light	●	●	●

● = Standard, ○ = Optional, at extra cost, □ = Included with another feature or part of an option pack, at extra cost.

Audio and communication systems

	Edge	Zetec	Ghia
Stereo CD/radio – Model 6000 CD, RDS EON, ‘Keycode’ anti-theft coding	●	●	
Sony CD audio system – Stereo radio/CD/MP3, RDS EON, PTY, MP3 capability, 40 station settings, ‘Keycode’ anti-theft coding, DPS, 8 premium speakers, new 'Island Design' centre stack	○	○	●
Sony 6CD audio system – Stereo radio/6 disc in-dash CD autochanger/MP3, RDS EON, PTY, MP3 capability, 40 station settings, ‘Keycode’ anti-theft coding, DPS, 8 premium speakers, new 'Island Design' centre stack		○	○
Steering wheel mounted toggle controls	●	●	●
CD-SD navigation system – Bosch Blaupunkt TravelPilot EX, MP3 capability, 5" colour display, 10 speakers	○	○	○
CD-SD navigation system – Bosch Blaupunkt TravelPilot EX, MP3 capability, 5" colour display with external 6-disc CD autochanger (located under driver's seat), 10 speakers	○	○	○
DVD navigation system – 7" touchscreen, colour display, MP3 capability, 10 speakers	○	○	○
DVD navigation system – 7" touchscreen, colour display, MP3 capability, 10 speakers with external 6-disc CD autochanger (located under driver's seat)	○	○	○

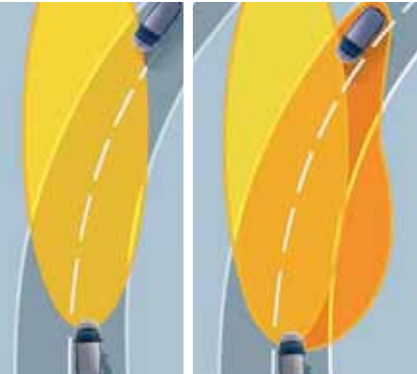
Bi-Xenon Front Lighting System

Ford Galaxy's bi-xenon headlights shine brighter and project a wider angle of light than conventional headlights. More than twice as powerful as halogen headlights, but using only two thirds of the energy. Includes static cornering lamps. (Option)



Adaptive Front Lighting System (AFS)

The Adaptive Front Lighting System (AFS) adjusts the headlights to aim precisely where you are heading, making for safer and more enjoyable night driving. Static cornering lamps provide extra light for sharp bends and junctions. (Option)



Hazard Warning Lights

The turn indicators automatically flash under heavy braking as a warning to following drivers.



Park Assist

With the Ford Galaxy, you won't have to pass by those more challenging parking spaces. An audible warning helps you safely judge the distance between the front and rear of your car and an obstacle, for easier parking and manoeuvring. Standard on Zetec and Ghia; option on Edge.

Specification

Audio and communication systems

	Edge	Zetec	Ghia
MultiMedia DVD system – DVD player located under front passenger’s seat, two LCD screens integrated in the front head restraints, with infra red remote control and two infra red headphones		○	○
Advanced Bluetooth® Hands-Free and Voice Control System (excludes cradle and tri-band antenna). Mobile phone not included.	●	●	●
Portable music player connection socket	●	●	●

● = Standard, ○ = Optional, at extra cost, □ = Part of option pack, at extra cost.
The Bluetooth® word mark and logos are owned by the Bluetooth SIG, Inc. and any use of such marks by Ford Motor Company is under licence. Other trademarks and trade names are those of their respective owners.

Interior features

	Edge	Zetec	Ghia
Comfort and convenience			
Accessory socket/cigar lighter – Front	●	●	●
Air recirculation switch	●	●	●
Air conditioning – CFC-free	●		
Air conditioning – CFC-free with Dual-zone Electronic Automatic Temperature Control (DEATC). Included as part of DVD Navigation on Edge	□	●	●
Air conditioning – Rear compartment			●
Centre console – Includes stowage, two moulded cup holders, and 2nd row rear ashtray	●	●	●
Centre console – Overhead, short length, including sunglasses stowage	●	●	
Centre console – Overhead, full length, including child observation mirror (also available with panorama roof or electrically-operated opening rear quarter vents)		○ / □	●
Clock – Digital (within audio unit display)	●	●	●
Cup holders – Two integrated into centre console, and one located in 3rd row sidewall trim	●	●	●
Grab handles – Front, 2nd and 3rd row folding with rear coat hooks	●	●	●
Mirror – Auto-dimming rear-view			●
Mirror – Located in front overhead centre console to watch children (also included when panorama roof or full-length overhead console ordered)	□	□	●
Stowage - Located in rear quarter panels and rear quarter side trim panels	●	●	●
Stowage trays – Front driver’s and passenger’s underseat foot area (not available with navigation systems with external 6CD or MultiMedia DVD system). Included as part of Traveller Pack		□	●
Stowage trays – Rear 2nd row underseat foot area	●	●	●
Sunblinds – Integrated pull-up on 2nd row and 3rd row windows (includes electrically-operated rear windows on Edge)	○	○	○
Sunvisors – Driver’s and passenger’s with mirror and cover	●		
Sunvisors – Driver’s and passenger’s with illuminated mirror and cover		●	●
Windows – Front, electrically-operated with one-touch lowering/closing on driver’s side and global opening/closing	●		
Windows – Front and rear, electrically-operated with one-touch lowering/closing, anti-trap feature and global opening/closing (only available on Edge if specified with integrated sunblinds)	□	●	●
Windows – Rear quarter vents, fixed	●	●	●
Windows – Rear quarter vents, electrically-operated opening (includes full length overhead console on Zetec)		○	○

Interior features

	Edge	Zetec	Ghia
Seat and seat belts			
Front seat – Driver’s manual height adjustment	●		
Front seat – Driver’s power height adjustment with manual adjustable lumbar support		●	●
Seat Pack - Driver and passenger’s 8-way power seat adjustment with manual lumbar support, electrically-operated/heated/folding door mirrors, memory function for driver’s seat. Included as part of Ford Individual Interior Pack.		○	○/□
Front seats – Anti-submarining, fully reclining with height-adjustable head restraints	●	●	
Front seats – Anti-submarining, fully reclining with fully-adjustable head restraints (only available on Zetec if specified with leather trim)		□	●
Front seats – Comfort-style with inboard armrests	●	●	●
Front seats – Heated, with variable control	○	○	○
Front seats – Variable climate control			○
2nd row seats – Three individual fold-flat seats with height-adjustable head restraints	●	●	●
2nd row seats – Easy entry tip and slide system	●	●	●
3rd row seats – Two individual fold-flat seats with height-adjustable head restraints	●	●	●
Seats – Leather trimmed with contrast stitching on Ebony leather (includes velour front and rear door trim). Included as part of Ghia X Pack and Ghia X Plus Pack		○	○ / □
Seats - Leather trimmed in beige or tan. Included as part of Ford Individual Interior Pack			□
Seat back trays – Folding		●	●
Stowage pockets – Front seat backs	●	●	●
Seat belts – Front, inertia reel, with grabbers, pre-tensioners and height-adjustable mounts. Rear, three inertia reel, lap and diagonal (2nd row), two inertia reel, lap and diagonal (3rd row)	●	●	●
Carpet and trim			
Door handles – Satin Chrome finish	●	●	●
Floor mats – Carpet slip mats, front and rear			●
Gear lever knob – Leather trimmed		●	●
Handbrake cover – Leather trimmed			●
Scuff plates – Front, bright-finish			●
Instruments and controls			
Headlight levelling control	●	●	●
Trip/fuel computer, incorporating exterior air temperature display and low temperature warning lights	●	●	●
Warning indicators for glow plugs on (diesel only), brake system, airbags, lights on, main beam, front and rear fog lights, handbrake, ESP, coolant temperature, driver’s seat belt, ignition on, oil pressure, oil change, tyre pressure sensors (where specified), ‘lights on’, key in ignition, door ajar and front seat belt reminder warning alarms	●	●	●
Ford Convers+ premium instrument cluster with 256 colour display			○
Illuminated recirculation heater controls – 4-speed fan, with pollen filter, direction control, two dedicated side window demists and rear compartment ducts	●	●	●
Cruise control (includes leather-trimmed steering wheel on Edge)	○	○	●
Steering column – Reach and rake adjustable	●	●	●
Steering wheel – Leather-trimmed with contrast stitching on Ebony leather (only available on Edge if specified with Cruise control)	□	●	●

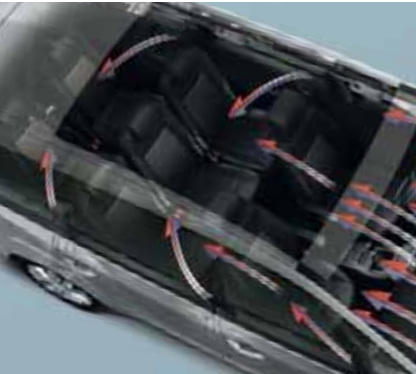
Toggle controls

Steering wheel-mounted toggle controls let you operate the audio system and trip computer without taking your hands off the wheel. (For use with Ford audio systems only)



Electric Parking Brake (EPB)

The stylish EPB delivers the ultimate in comfort and convenience. To engage and disengage the handbrake takes a simple touch of a button. It will even disengage automatically if you choose. (Option)



Rear compartment air conditioning

Carefully positioned ducts provide optimum ventilation for all three rows of passengers – with a separate compressor delivering additional cooling capacity for rear passengers. Standard on Ghia.



Puddle lights

Illuminate the ground when the front doors are opened or unlocked. (Standard on Ghia and an option on Zetec)

Specification

Interior features

	Edge	Zetec	Ghia
Interior lighting			
Courtesy light – Front overhead with theatre-style dimming and delayed switch-off	●	●	●
Courtesy lights – Front overhead with 2nd and 3rd row courtesy lights	●		
Courtesy lights – Front overhead with 2nd and 3rd row courtesy lights and 2nd row reading lights		●	
Courtesy lights – Front overhead with 2nd and 3rd row courtesy lights, 2nd and 3rd row reading lights, and front footwell light			●
Courtesy lights – Illuminated entry system (courtesy lights and door mirror puddle lights, if fitted, illuminate when vehicle unlocked)	●	●	●
Luggage compartment			
Courtesy lights – Two	●	●	●
Tie-down hooks	●	●	●
Load protection net	○	○	○
Dog guard. Available in two versions for fitment behind either the first or second row seats	○	○	○
Tonneau cover	○	○	○

● = Standard, ○ = Optional, at extra cost, □ = Included with another feature or part of an option pack, at extra cost.

Option packs

	Edge	Zetec	Ghia
Traveller Pack – Tonneau cover, sliding cross bars (supplied with the vehicle but not factory-fitted), load protection net, and front driver's and passenger's underseat stowage trays (under seat stowage trays not available with navigation systems with external 6 CD or Multimedia DVD - rear seat entertainment system)		○	○
Ghia X Pack – Fixed panorama roof, leather trimmed seats (includes velour front and rear door trim), and electrically-operated opening rear quarter vents			○
Ghia X Plus Pack – Fixed panorama roof, leather trimmed seats (includes velour front and rear door trim), 8x18" 5-spoke alloy wheels with 235/45 Rx18 tyres (not available with run-flat tyres), bi-xenons, and electrically-operated opening rear quarter vents			○
Ford Individual Interior Pack – Leather 'Individual' seat and door trim (Beige or Tan), Front Seats - Variable Heating, Seat Pack (Driver and passenger's 8-way power seat adjustment with manual support, electrically-operated/heated/folding door mirrors, memory function for driver's seat), front door scuff plates, front and rear mats and alloy pedals. Not available to order with climate seats, Ghia X Pack, or Ghia X Plus Pack			○

● = Standard, ○ = Optional, at extra cost.

Foldable stowage box

Ford Galaxy is an extremely spacious vehicle – and you can increase its flexibility even further with this purpose-designed stowage solution. (Accessory)



Ford Boutique stowage box

This portable stowage box is perfect for toys, shopping or anything else you need to keep from moving around the cabin whilst driving. Order code F06-12-31.

