

FordFocus

Feel the difference





0.965237 of a millimetre

That's the thickness of a clay shaving. And to our designers it can make all the difference, as they hone and refine their clay prototype until they find the perfect expression of energy in motion.

The result is what we call Ford kinetic Design and we're passionate about it.

Bold, beautiful lines that you can't help falling in love with.



Actual size.

The allure of the car. The anticipation of the journey. The thrill of the drive. Life feels good in the new Ford Focus.



In touch with your surroundings

Everything you see and touch puts you comfortably in control. Inspiration and intuition in equal measure.



Just knowing that you can is enough.



It looks as good standing still, as it feels when you're driving.



The stylish, intelligent choice.





Sony 6CD DAB stereo radio with RDS/6-disc in-dash CD autochanger

Sony 6CD DAB stereo radio with RDS/6-disc in-dash CD autochanger features MP3 playback capability via an external AUX jack or optional USB port located between the two front seats. (See specification pages for availability)



The Ford Focus is certainly full of compelling style, but that's not the end of the story. Closer inspection reveals plenty of clever features, designed with careful attention, for you and your passengers alike.

That's clever

'Ford Power'

The new 'Ford Power' button brings an extra thrill to the start of every drive. (Standard on ST)



Voice Control

Tell your Ford Focus exactly what to do. Change radio stations or CD track, make and receive calls using your Bluetooth® compatible mobile phone, control the DVD navigation system, access and control MP3 files via USB, and adjust the temperature or fan settings*. Speak and you will be obeyed. (Option with Bluetooth)



Ford Easy Fuel

Ingenious capless refuelling system can tell the difference between petrol and diesel fuel pump nozzles, only accepting the correct type of nozzle for your car.



Power-fold door mirrors

Door mirrors can be retracted out of harm's way when parked. Equally useful when squeezing through tight spaces. (Part of optional Titanium X Pack)

*Requires Dual Electronic Automatic Temperature Control (DEATC)
Note It is an offence for drivers to use a hand-held mobile phone or similar device while driving.



Ford PowerShift transmission

New Ford PowerShift advanced dual-clutch gearbox combines the ease of an automatic transmission with the responsiveness of a manual. What really sets it apart is its ability to shift gears almost seamlessly and without interrupting the drive of the engine. This eliminates the usual conflict between sportiness, convenience and economy, leaving you to enjoy an uncompromised driving experience. (Option with 2.0 Duratorq TDCi engines)

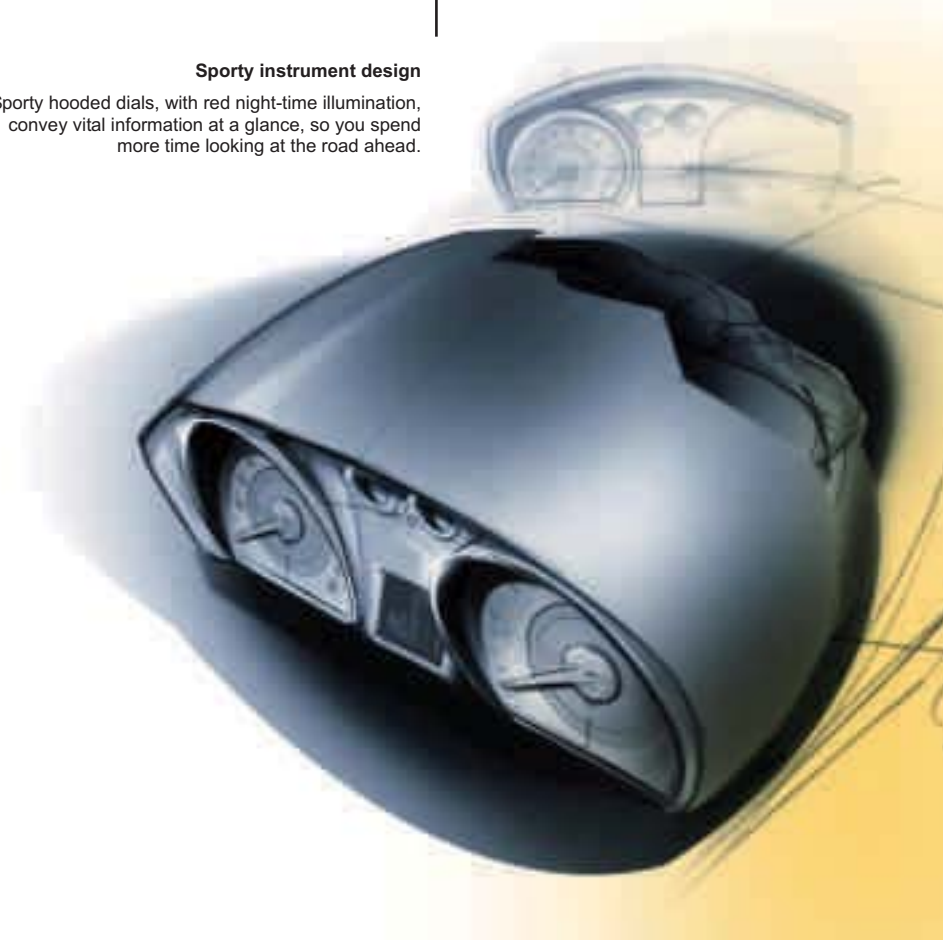


Make the most of life's twists and turns with the engaging Ford Focus. With its balanced handling, instant responses and superb ergonomics, you'll not want the journey to end.

That Ford feeling

Sporty instrument design

Sporty hooded dials, with red night-time illumination, convey vital information at a glance, so you spend more time looking at the road ahead.



Designed with you in mind

Only when you feel comfortable do you feel fully in control. So every element of the Ford Focus, from the height-adjustable driver's seat to the fully-adjustable steering column, has been designed with your comfort in mind.



Independent thinking

Control Blade rear suspension allows each rear wheel to react independently to bumps and undulations, increasing stability and enhancing ride quality.



Electric Hydraulic Power Assisted Steering (EHPAS)

Provides greater steering assistance at lower speeds for easier parking, while reducing the level of power assist at higher speeds for more precise steering. Switchable between Standard, Comfort and Sport modes. (Standard with 1.6, 1.8 and 2.0 Duratorq TDCi; 1.8, 2.0 and 2.5 Duratec petrol engines)



Designed to last

Only the great designs truly stand the test of time.

The attention to detail that has been lavished on Ford Focus is immediately evident, from the exterior finish to the quality of the interior. Ford has engineered every single component for dependability, safety and strength, with one objective clearly in mind: quality that's built to last.

Precision-built with the future in mind



Strength in numbers

Six airbags. Five star Euro NCAP adult occupant protection rating. One Intelligent Protection System.

The Ford Focus IPS includes:

1. Driver and front passenger's airbags*
2. Driver and front passenger's side thorax airbags
3. Side curtain airbags for both front and outer rear passengers
4. Robust computer-optimised body structure with ultra-rigid safety cell and crumple zones
5. Advanced lap and diagonal inertia reel seat belts on all seats. Pre-tensioners, load-limiting retractors and height-adjustable mounts on front seats
6. ISOfix child seat mountings on outer rear seats
7. Anti-submarining seat bases
8. Anti-lock brakes (ABS) with Electronic Brake-force Distribution (EBD)
9. Electronic Stability Programme (ESP) and Traction Control System (TCS)
10. Emergency Brake Assist (EBA) (included with ESP)
11. Electrically-operated windows with 'bounce-back' anti-trap feature
12. Allergy-tested interior, endorsed by TÜV and awarded the British Allergy Foundation's 'Seal of Approval' for its allergy-friendly properties
13. Hazard Warning Lights: the turn indicators automatically flash under heavy braking as a warning to following drivers

Adaptive Front lighting System (AFS)

Halogen-based AFS automatically adjusts the headlights to aim where you are going, making for safer and more enjoyable night driving. Comes with LED rear light technology. (Option)

Deflation Detection System (DDS)

Alerts you if tyre pressure drops to an unsafe level. (Option)

Allergy-tested interior

Breathe easy with Ford Focus's allergy-tested interior, endorsed by TÜV and awarded the British Allergy Foundation's 'Seal of Approval' for its allergy-friendly properties.

*Note: A child seat should never be placed in the front passenger seat when the Ford vehicle is equipped with an operational front passenger's airbag. The safest place for children is properly restrained on the rear seat.



With stylish Studio trim, the Ford Focus is ready for anything you have in mind.

Studio



Irresistible looks, imaginative features and attention down to the last detail, such as the new instrument panel design with its sports car-inspired hooded dials. That's Studio – the start of your journey of choice.

Features

- Electronic Stability Programme (ESP)
- Ford Easy Fuel capless refuelling system
- Electrically-operated door mirrors with integral indicators
- Electrically-operated driver and front passenger windows
- CD player with six speakers (four front, two rear)
- Remote control central locking
- Ford Intelligent Protection System (IPS)*, including driver and front passenger's airbags* and side airbags
- Hazard Warning Lights
- Anti-lock braking system (ABS) with electronic brake-force distribution (EBD)
- Independent Control Blade multi-link rear suspension
- Music connection socket
- Rack and reach adjustable steering column
- Driver seat height adjust

*Note: A child seat should never be placed on the front passenger seat when the Ford vehicle is equipped with an operational front passenger's airbag. The safest place for children is properly restrained on the rear seat.
Model shown above is finished in Panther Black metallic paint. (Option)

Door mirror indicators

Reflect an elevated sense of style and sophistication.

AUX jack

Located in the glovebox. Lets you connect your MP3 player to the car's audio system.

ESP

Electronic Stability Programme (ESP) helps to keep your car safely on track.

Generous loadspace

Ford Focus 5-door delivers an impressive 385 litres of luggage capacity in 5-seat mode*.

*With mini-spare.

Ford Easy Fuel

Ingenious capless refuelling system can tell the difference between petrol and diesel fuel pump nozzles, only accepting the correct type of nozzle for your car.

Chrome bonnet trim



Refreshing air conditioning, eye-catching steering wheel and a sporty instrument cluster – just some of the cool interior highlights to be found on Style.

Style



Move on up with the Ford Focus Style. With its athletic stance and dynamic performance, this is a car that can't help attracting attention.

Additional to Studio

- 16" 5-spoke 'Design' Wheels
- Electrically-operated and heated door mirrors with integral indicators and body colour housings
- Front fog lights
- Air conditioning
- Leather steering wheel with silver-effect accents
- Trip/fuel computer
- Remote audio controls
- Front seat back stowage pockets
- Sporty instrument cluster design with satin aluminium-finish trim rings
- Aluminium-finish interior door handles

Model shown above is finished in Avalon metallic paint. (Option)

Instrument cluster
New design is both sporty and easy to read.

Front fog lights
Enhance visibility in poor driving conditions.

Design wheels
Stylish 16" 5-spoke 'Design' wheels.

Body colour door mirror housings

Aluminium-finish interior door handles

Body colour door handles



Ford Focus ECONetic's generous standard specification proves that caring for the environment doesn't mean you have to compromise on style.

ECONetic



ECONetic's specially-tuned diesel engines, improved aerodynamics and low rolling resistance tyres bring substantial improvements to emissions and fuel economy without diminishing Ford Focus' dynamic ability.

Additional to Style

ECONetic emissions-reducing features:

- Specially-tuned 1.6-litre Duratorq TDCi engines for optimum fuel economy
- 15" steel wheels in lieu of 16" 'Design' wheels
- 195/65R15 low rolling resistance tyres
- Lowered sports suspension
- Tyre repair kit in lieu of mini spare wheel

Model shown above is finished in Vision metallic paint. (Option)

Body colour door mirror housings

Low rolling resistance tyres

Reduce frictional drag so less energy is required to maintain progress along the road.

16" 5-spoke alloy wheels
(Option)

Body colour door handles

Rear spoiler

Special ECONetic tailgate badge
Display your 'green' credentials



The exciting Ford Focus Zetec scores top marks for performance and style.

Zetec



Expect more from every drive with the sporty Ford Focus Zetec. With its superb handling, 16" alloy wheels and sports seats, the anticipation is as exhilarating as the drive itself.

Additional to Style

- 16" 5-spoke alloy wheels
- Body colour rear spoiler (3-/5-door models)
- Black headlight surrounds
- Sports-style front seats
- Driver's seat with manual lumbar adjustment
- Premium centre console with integrated stowage box and armrest
- Quickclear heated windscreen
- Sports-tuned suspension
- Perimeter Alarm
- Headlight courtesy delay

Model shown above is finished in Ocean Blue metallic paint. (Option)

Alloy wheels
Fabulous 16" 5-spoke alloy wheels

Body colour rear spoiler
Aerodynamically-styled for a competitive edge.

Headlight surrounds
Sporty black headlight surrounds.

Quickclear heated front windscreen
Saves you having to scrape ice from the windscreen – or wait for the interior ventilation to demist the windscreen on hot days.

Premium centre console
Console comes with integrated stowage box.

Sport-style front seats
Put you comfortably in control.



Always a stunning sight for other drivers, Ford Focus Zetec S is equally appealing on the inside.

Zetec S



If you like the Ford Focus Zetec, you'll love this! With its bold new style and stunning 17" alloy wheels, there's no doubt that the 'S' in Ford Focus Zetec S stands for 'Sport'.

Additional to Zetec

- 17" alloy wheels
- Aerodynamic body colour sports front spoiler and side skirts
- Aluminium foot pedals (not with PowerShift transmission)
- Aluminium-finish handbrake cover
- Available with the 1.6 Ti-VCT engine with variable valve timing

Model shown above is finished in Vision metallic paint. (Option)

Body colour side skirts
Combine with the sports front and rear spoilers to improve aerodynamics.

Body colour rear spoiler

Body colour sports front spoiler

Distinctive Zetec 'S' badge

Premium centre console
Console comes with integrated stowage box.

Sport-style front seats
Put you comfortably in control.



With its effortless blend of contemporary style and innovative technology, the irresistible Ford Focus Titanium will awaken the driver in you.

Titanium



Titanium adds a little extra exclusivity with seductive 17" multi-spoke alloy wheels, plus a range of attractive features, such as automatic headlights and rain-sensing windscreen wipers.

Additional to Zetec

- 17" multi-spoke alloy wheels
 - Sony DAB audio system with CD player
 - Cruise Control
 - Electrically-operated front and rear windows with global opening and closing
 - Automatic headlight control, rain-sensing autowipers and auto-dimming rear-view mirror
 - Thatcham category 1 alarm
 - Lower chrome grille surround
 - Leather gear knob
- Front floor mats
 - Aluminium scuff plates
 - Rear centre armrest
- Note:Deletes Sports Suspension**

Model shown above is finished in Chill metallic paint. (Option)

Privacy glass
Sophisticated style and appearance for your rear-side windows and tailgate window. (Optional)

Front autowipers
Switch on automatically if it starts to rain. Can also be adjusted for sensitivity.

Automatic headlights
Switch on and off automatically in response to changes in ambient light levels.

Grille surround
Titanium is distinguished by a chrome lower grille surround.

Premium scuff plates
Combined with high-quality floor mats.

Auto-dimming rear-view mirror
Helps take the glare away from reflected lights.



Awesome looks. Awesome performance. And an interior that leaves no doubt as to this car's serious sporting credentials.

ST



If racing improves the breed, the sensational Ford Focus ST is indeed a true thoroughbred. With 225 PS of turbocharged power at your command and muscular looks to match, this is one hot, yet remarkably civilised, car.

Focus ST

- 18" 5-spoke alloy wheels with 225/40 WR18 performance tyres
- 2.5 Duratec ST turbocharged engine
- Exclusive ST sports bodystyling
- Unique sports interior styling, including Recaro front sports seats with driver's 8-way adjustment and manual lumbar support
- Unique ST-design leather-wrapped sports steering wheel
- 'Ford Power' engine start/stop button
- Performance suspension

- High-performance front and rear disc brakes

Focus ST-2 adds:

- Sony DAB audio system with CD player
- Bi-xenon headlights with rear LED lights
- Quickclear heated windscreen

Focus ST-3 adds:

- Full leather Recaro Seats
- Sony DAB Audio system with in-dash 6CD autochanger

Model shown above is finished in Electric Orange metallic paint. (Option)

Alloy wheels

18" 5-spoke alloy wheels are shod with 225/40 WR18 tyres for exhilarating grip.

Rear spoiler

Shaped for both aerodynamic and visual effect.

Twin sport exhausts

Help the turbocharged Duratec ST engine breathe more freely.

Recaro sports seats

Distinctive, body-hugging front seats make a statement of intent.

'Ford Power'

The engine power button is a potent reminder of Ford's racing heritage.

Fog light housings

Finished in body colour to make an immediate visual impact.



Pick your Ford Focus – from the expressive Studio to the powerful ST, petrol to diesel, three-door to estate, and all points in between – before indulging in a collection of racy alloys, fabulous audio systems and specially-designed interior and exterior options to make your car exactly that. Your car.

Vehicle shown below is the new Ford Focus RS. Please contact your Ford Dealer for details and availability.

The range



Studio

Key features

- Electronic Stability Programme (ESP)
- Ford Easy Fuel capless refuelling system
- Door mirror integral indicators
- Electrically-operated front windows
- Portable music player connection socket

Bodystyles

- 3-door, 5-door, Estate

Engines (petrol)

- 1.4 Duratec • 1.6 Duratec

Engines (diesel)

- 1.6 Duratorq TDCi (90 PS)

Style

Additional to Studio

- 16" 5-spoke 'Design' wheels
- Front fog lights
- Air conditioning
- Heated door mirrors with bodycolour housings
- Leather steering wheel with silver effect accents
- Trip/fuel computer

Bodystyles

- 5-door, Estate

Engines (petrol)

- 1.6 Duratec • 1.8 Duratec

Engines (diesel)

- 1.6 Duratorq TDCi (90 PS) • 1.6 Duratorq TDCi (109 PS) • 1.8 Duratorq TDCi

ECONetic

Additional to Style

ECONetic emissions-reducing features:

- Specially-tuned 1.6-litre Duratorq TDCi engines for optimum fuel economy
- 15" steel wheels in lieu of 16" 'Design' wheels
- 195/65R15 low rolling resistance tyres
- Lowered sports suspension
- Tyre puncture repair kit

Bodystyles

- 3-door, 5-door, Estate

Engines (diesel)

- 1.6 Duratorq TDCi (90 PS) • 1.6 Duratorq TDCi (109 PS)

Zetec

Additional to Style

- 16" 5-spoke alloy wheels
- Body colour rear spoiler (3-/5-door models)
- Sports-tuned suspension
- Quickclear heated windscreen

Bodystyles

- 3-door, 5-door, Estate

Engines (petrol)

- 1.6 Duratec • 1.8 Duratec

Engines (diesel)

- 1.6 Duratorq TDCi (109 PS) • 1.8 Duratorq TDCi • 2.0 Duratorq TDCi (136 PS)

Zetec S

Additional to Zetec

- 17" alloy wheels
- Aerodynamic body colour sports front spoiler and side skirts
- Aluminium foot pedals (not with PowerShift transmission)
- Aluminium-finish handbrake cover
- Available with 1.6 Ti-VCT engine

Bodystyles

- 3-door, 5-door

Engines (petrol)

- 1.6 Duratec Ti-VCT • 1.8 Duratec • 2.0 Duratec

Engines (diesel)

- 1.8 Duratorq TDCi (115 PS) • 2.0 Duratorq TDCi (136 PS)

Titanium

Additional to Zetec

- 17" multi-spoke alloy wheels
- Sony DAB audio system with CD player
- Cruise control
- Thatcham cat 1 alarm
- Automatic headlights
- Rain sensing wipers
- Auto-dimming rear-view mirror

Bodystyles

- 5-door, Estate

Engines (petrol)

- 1.6 Duratec • 1.8 Duratec • 2.0 Duratec

Engines (diesel)

- 1.6 Duratorq TDCi (109 PS) • 1.8 Duratorq TDCi • 2.0 Duratorq TDCi (136 PS)

ST

Key features

- 18" 5-spoke alloy wheels
- 2.5 Duratec ST turbocharged engine
- Exclusive ST sports bodystyling
- Unique sports interior styling, including Recaro front sports seats with driver's 8-way adjustment and manual lumbar support
- Sports-tuned suspension and brakes

Bodystyles

- 3-door, 5-door

Engine (petrol)

- 2.5 Duratec ST



18" 5-spoke alloy wheel
(Part of Titanium Sport Pack)



A powerful grip and distinctive looks go hand in hand with our range of stylish alloy wheels, each designed to perfectly complement the dynamic lines of your new Ford Focus.

Feel in control

15" 8-spoke wheel cover design
(Standard on Studio and ECONetic)



16" 5-spoke 'Design' wheel
(Standard on Style)



16" 5-spoke alloy wheel (Standard on Zetec)



16" 5-spoke 'Y' finish alloy wheel
(Option on Style as part of Sport Pack)



16" multi-spoke alloy wheel (Accessory)



17" 8-spoke alloy wheel
(Option on Zetec as part of Sport Pack)



17" 5x2-spoke alloy wheel
(Standard on Zetec S)



17" multi-spoke 'machined' finish alloy wheel
(Standard on Titanium)



18" 5-spoke alloy wheel
(Standard on ST)



18" 5-spoke alloy wheel
(Option on Zetec S and Titanium as part of the Sport Pack)



18" 7-spoke 'anthracite' alloy wheel with 'machined' rim
(Accessory)



18" 10-spoke alloy wheel
(Accessory)





Sony DAB audio

Sony DAB audio systems provide improved reception and sound quality, simple easy-to-use tuning and access to an extensive range of radio stations. The display also shows useful information about the programme you are listening to. Sony audio systems also offer MP3 playback capability, optional in-dash CD autochanger and an optional USB port. (Option)

Voice Control

Make and receive calls using your Bluetooth® compatible phone, wherever it is in the car, and operate the audio, navigation and climate systems without taking your hands off the steering wheel. (Option)



Pioneer premium loudspeakers

As the essential link in any audio system, Pioneer's latest speakers offer unrivalled sound quality, good looks and value for money. (Accessory)



USB connection

Connect your iPod® or MP3 player and operate it via the Sony audio or Ford Navigation systems (Option). Connector wiring available as an accessory.



Staying in touch is easy with the very latest communication, entertainment and information options. From great-sounding Sony DAB audio units to intelligent navigation systems, Bluetooth® and Voice Control, your journeys can be made easier, quicker and more enjoyable.

Feel connected

The ultimate travelling companion

DVD Touchscreen navigation system featuring a 7" full-colour touch-screen display and easy-to-follow audio-visual directions. Includes CD/MP3 audio system, climate system controls, eight premium speakers and Bluetooth® with USB. (Option. Includes DEATC air conditioning)



Keep on the right road

The Advanced navigation system (part of the Communications Pack) offers route guidance and CD/tuner in one. It features a 5" full-colour display with colour map and turn-by-turn instructions to your destination. The maps are stored on a 2GB SD card, covering UK/Ireland and major European roads. When not using the navigation feature, you can play MP3 files direct from an SD memory card. (Option)



Becker navigation system 'Indianapolis Pro'

Single DIN-sized navigation system, known for its brilliant sound and superior navigation abilities within most European countries. TMC traffic announcements and speed signal feature provide dependable navigation, even in areas with poor GPS signal reception. Also plays MP3. DIN adaptor with optional CD box is available separately. (Accessory)



Garmin Mobile navigation

Leave your maps behind with a simple and intuitive mobile GPS navigation system. Please contact your Ford Dealer for details. (Accessory)



Standard = Standard on your vehicle.
Option = Can be ordered only together with your new vehicle.
Accessory = Available from your Ford Dealer.



Interior Styling Pack

Featuring luxury velour carpet mats, stainless steel scuff plates with Focus logo, styled gear knob and handbrake cover with crafted aluminium-effect inserts. (Option. All parts are also available individually as Accessories)

Unique aluminium pedals

Including a matching footrest, add a further sporty dimension. (Accessory)

Note: This image illustrates some of the options listed above, and shows some features not currently available in the UK.

Cruise control

Simply select your desired speed and the system will maintain it for as long as you wish. The selected speed can be manually increased or decreased, with the car automatically resuming the last set speed if desired. (Standard on Titanium)



Give your Ford Focus a personality of its own. Whether you're looking to accentuate style, enhance comfort or increase practicality, there's plenty of scope to make your mark.

Feel unique



Dual-zone Electronic Automatic Temperature Control (DEATC) air conditioning

Easy-to-use system can be adjusted separately for the driver and front passenger, with up to 4°C variation from side to side. (Option)

Leather interior

Indulge yourself with high-quality leather seats and coordinating leather door panels. (Leather interior included as part of the Optional Titanium X Pack).



Premium velour carpet floor mats

Includes the 'Focus' nameplate. Made to perfectly complement your chosen interior with a touch of luxury. Driver's mat is fixed to prevent slippage and interference with pedals. (Accessory)



Rear parking sensors

An audible warning helps you safely judge the distance between the rear of your car and an obstacle for easier parking and manoeuvring. (Option and accessory)



Chrome mirror caps

Add a touch of class with stylish chrome-effect mirror caps. (Accessory)



ClimAir® wind deflector

Reduces turbulence and noise, allowing you a more enjoyable drive with the front windows down, even when it's raining. (Accessory)



Ford alarm system

Fully-integrated security system monitors the vehicle's doors, bonnet and boot. Also features ultrasonic sensors to detect movement inside the vehicle. (Accessory)





Eibach suspension-lowering kit
Enhances driving performance and handling as well as giving a more sporty appearance.
Lowers the car by approximately 30 mm. (Accessory)



The Ford Focus is a dynamic looking car, even in its standard form. But add from a choice of eye-catching spoilers, stripes and styling elements, and you'll draw admiring glances wherever you drive.

Feel inspired



Full bodystyling kit
Enhance the appearance of your Ford Focus with this full bodystyling kit including: front and rear bumper skirts, unique upper/lower grilles, side skirts, large spoiler and exhaust end pipe. The full bodystyling kit is available in combination with 17" or 18" alloy wheels (Accessory).
Partial bodystyling kit also offered including: large spoiler, unique upper/lower grilles and 17" 8-spoke alloy wheels. (Accessory)

ST stripes
Show your rebellious streak with these purposeful body stripes. Available as side and overhead stripes. (Available for ST series only, option and accessory in white, silver or blue)



Large rear spoiler (3-/5-door)
Large, body-coloured spoiler gives your Ford Focus a sporty look. (Accessory)



Large rear spoiler (Estate)
Aerodynamically-styled to significantly increase downforce at speed. (Accessory)



Small rear spoiler
Stylish body-coloured spoiler adds to the Ford Focus estate's dynamic appearance. (Accessory)



Front fog light kit
Cut through the gloom with these powerful and stylish fog lights with unique housings. (Also available as accessory)



Roof rails

Enhance the estate's load-carrying versatility. Shown in conjunction with lockable crossbars (accessory) and Thule windsurf carrier. (accessory)

Tow bars
For extra transport and stowage capability. Available as fixed and detachable versions. (Option/accessory)



Make the most of the great outdoors with a wide range of travel accessories. As well as being stylishly functional, each item is carefully thought out to maximise the wide-ranging versatility of your Ford Focus.

Feel free

Britax Duo Plus ISOfix child safety seat

A wide range of Britax child safety seats available for all ages, also with ISOfix. (Accessory)



Loadspace liner

Durable liner, designed to keep the luggage compartment tidy, ideal for transporting wet or dirty items. (Accessory)



Thule roof box

A range of various sized boxes protect your luggage from weather and theft. (Accessory)



Base roof carrier

Available to suit all bodystyles, this carrier forms the base for all roof transportation attachments. (Accessory) **Thule ProRide bike carrier** specially designed to carry modern bikes with frames up to 80 mm in diameter. Also features integral locks to keep bikes safe and secure. (Accessory)



Anti-slip mat

Luggage compartment protection, moulded to fit perfectly into the vehicle. Incorporates anti-slip surface. (Accessory)



Reversible and foldable luggage compartment mat

Provides luggage compartment protection, even with the rear seats folded down. Reversible design offers choice of carpet, or durable rubber surface ideal for carrying wet or dirty items. Incorporates flap to protect rear bumper during loading. (Accessory)



Load barrier retention net

Keeps items in the luggage compartment, where they belong. Meets ECE-R17 safety requirements. (Accessory)



Modular dog guard system

Half-height, full-height or full-height with luggage divider, this modular system keeps dogs or items of luggage safely in the luggage compartment. (Accessory)



We are all beginning to understand the impact that mobility is having on climate change. While we can't change things overnight, we are working very hard to find solutions.

Making a difference

On Ford Focus, Ford C-MAX, Ford Mondeo, Ford S-MAX and Ford Galaxy, our optional Flexifuel engine, fuelled by E85, is achieving emission reductions of around 30% to 80%** compared to conventional petrol engines. E85 is a mixture of 85% plant-derived ethanol and 15% petrol, but these models can run on any mixture of the two – even 100% petrol.

New low emission diesel ECONetic derivatives are now available. Ford Fiesta ECONetic delivers more than 76.3 mpg, emitting just 98 g/km of CO₂. Ford Focus ECONetic delivers more than 65mpg, emitting just 114 g/km of CO₂ and Ford Mondeo ECONetic delivers more than 54 mpg, emitting 139 g/km of CO₂.

Protecting the future

Using our Product Sustainability Index, a design for sustainability management tool, we are addressing the environmental, social and economic impacts of our vehicles from the earliest stages of their development*.

We are working on a wide range of vehicle technologies from biofuels to hybrids and clean diesels, and in the long term to hydrogen fuel-cell technology with the potential for near zero CO₂ emissions.

Improving our manufacturing facilities

Elsewhere, we are working to minimise the impact of our facilities on the environment, for example by pioneering on-site generation of electricity from sun and wind.

Breathe easier

The allergy-tested interiors of Ford Focus, Ford C-MAX, Ford Kuga, Ford Mondeo, Ford S-MAX and Ford Galaxy models were the first worldwide to receive the approval of the independent German TÜV organisation.

Recycling for good

In the interests of sustainability, many of our components contain recycled and renewable content. All Ford vehicles are at least 85% recyclable and 95% recoverable in accordance with ISO 22628. We offer free take-back for qualifying vehicles at the end of their lives. All our take-back points are fully licensed and must also meet additional Ford quality standards for the professional receipt, treatment and recovery of end-of-life vehicles.

This brochure has been produced on paper based on fibres from sustainable forestry, using a 100% chlorine-free (TCF) bleaching process.

*For more about this topic, see www.ford.com/go/sustainability
**Dependent on feedstock used and production process. (Source: EUCAR CONCAWE study.)
Ford supports the sustainable production of biofuels.

Our range of finance, insurance, service and assistance options is designed with just one thing in mind – making life easy for you.

Ford Credit

When it comes to financing your vehicle, your Ford Dealer can remove the need for lengthy phone calls, endless online surfing and form-filling. They can help you complete an application and will get a decision, usually within 15 minutes.

So what can your Ford Dealer provide? **Ford Options** offers increased flexibility if you want to change your car more often; **Ford Acquire** is ideal for private and business users who want a more straightforward financing plan; **Ford Business Partner** Contract Hire* provides an affordable, convenient and flexible way to finance your business vehicle; and **Ford Insure**** is our comprehensive motor insurance product, designed specifically for Ford drivers.

Finance subject to status. Guarantees/indemnities may be required. Freepost Ford Credit.
*Business Partner Contract Hire is provided by Lex Vehicle Leasing Limited, trading as Ford Business Partner, Heathside Park, Heathside Park Road, Stockport SK3 0RB.
**Ford Insure is underwritten and administered by Royal & Sun Alliance Insurance plc (No. 93792). Registered in England and Wales at St Mark's Court, Chart Way, Horsham, West Sussex, RH12 1XL. Authorised and regulated by the Financial Services Authority. For your protection, telephone calls will be recorded and may be monitored.

Services

Ford Protect

Your new Ford is protected by a 3-year/60,000-mile Ford Protect Classic Plan Warranty, and comes with Ford Assistance roadside cover throughout the UK and Europe for 1 year. You can also upgrade to a Ford Protect Premium Plan, giving you the option of scheduled servicing and extended Ford Assistance.

Ford Service

Like any vehicle, your new Ford needs servicing regularly to keep it in the best condition and to maintain its value. The Ford authorised repairer network is independently quality checked to ensure the highest standards of workmanship are maintained. Ford has the largest repairer network in the UK, and uses Ford-trained technicians, Ford-specific tools and the latest computerised diagnostic equipment specifically for your Ford.

Ford Accident Repair Centres

Should your Ford require accident repair, an approved Ford Accident Repair Centre is the best place to return your vehicle to its pre-accident condition. Repairers displaying the Ford Accident Repair Centre sign meet the rigorous customer service, technical and quality standards demanded by Ford. Ford trained technicians, the latest repair equipment and the use of original parts mean that the future safety and value of your vehicle are assured.

Contacts

Ford Customer Relationship Centre

In the unlikely event that your Ford Dealer can't help you or if you need to speak to us directly, call 0845 841 1111 at local rates.

Ford Rental – local service nationwide

Car and van rental from our latest model range. Contact your local Ford Dealer for more information.

Talkback – the company car drivers' club

This is your club for extended test drives, special events, and advice on tax and buying issues. Join free, even if you don't drive a Ford, on www.talkbackclub.com or call 0845 605 55 66.

Ford Mobility

Our MAGIC care centre provides free information on all motoring and mobility issues, including special offers for HRDLA and Motability recipients. Call free on 0800 240 241.

Exterior equipment

	Studio	Style	ECOnetic	Zetec	Zetec S	Titanium	ST
Design features							
Door mirrors – Black housing, electric operation, integrated side indicator	●	–	–	–	–	–	–
Door mirrors – Body colour housing, heated, electric operation, integrated side indicator	–	●	●	●	●	●	●
Front lower grille – Chrome surround	–	–	–	–	–	●	–
Front fog lights	–	●	●	●	●	●	●
Rear privacy glass	–	□	–	○ / □	○/□	○	○
Rear spoiler – Black, for 3- and 5-door	●	●	●	–	–	–	–
Rear spoiler – Body colour (small), for 3- and 5-door	–	□	–	●	–	●	●
Rear spoiler – Body colour (large), for ST and Zetec S	–	–	–	–	●	–	●
ST stripes – Overhead	–	–	–	–	–	–	○
ST stripes – Side	–	–	–	–	–	–	○
Estate roof rails – Black finish	○	○	○	–	–	–	–
Estate roof rails – Silver finish	–	–	–	○	–	○	–
Detachable towbar	–	○	–	○	–	○	–
Wheels							
Steel – 15"x6", 8-spoke wheel covers, 195/65 tyres	●	–	–	–	–	–	–
Steel – 15"x6", 8-spoke wheel covers, 195/65 low resistance tyres	–	–	●	–	–	–	–
Design Steel – 16"x6½", 5-spoke wheel covers, 205/55 tyres	–	●	–	–	–	–	–
Alloy – 16"x7", 5-spoke 'Y' finish, 205/55 tyres	–	□	○	–	–	–	–
Alloy – 16"x7", 5-spoke, 205/55 tyres	–	–	–	●	–	–	–
Alloy – 16"x7", Multi-spoke, 205/55 tyres	–	–	–	–	–	–	–
Alloy – 17"x7", 5x2-spoke, 205/50 tyres	–	–	–	–	●	–	–
Alloy – 17"x7", 'Y' 8-spoke, 205/50 tyres	–	–	–	□	–	–	–
Alloy – 17"x7", Multi-spoke, 205/50 tyres	–	–	–	–	–	●	–
Alloy – 18"x7½", 5-spoke, 225/40 tyres (not with 1.6 petrol or 1.6 TDCi diesel engines)	–	–	–	–	□	□	–
Alloy – 18"x8", ST 5-spoke, 225/40 tyres	–	–	–	–	–	–	●
Tyre repair kit	–	–	–	–	–	–	●
Spare – Mini steel	●	●	–	●	●	●	○
Spare – Full-size steel	○	○	–	○	○	–	–
Locking wheel nuts (only where alloy wheels are fitted)	–	●	●	●	●	●	●
Convenience features							
Ford Easy Fuel capless refuelling system	●	●	●	●	●	●	●
Headlights – Automatic on/off	–	–	–	–	–	●	□
Headlights – Adaptive Front lighting System (AFS) including rear lights with LED technology	–	–	–	–	○	○	–
Parking Distance Sensor – Rear	–	○	○	○	○	○	○
Tailgate wash/wipe	●	●	●	●	●	●	●
Wipers – Standard with 6-speed interval settings	●	●	●	●	●	–	●
Wipers – Automatic with rain sensor	–	–	–	–	–	●	□
Quickclear Heated Windshield with heated washer jets	–	○	○	●	●	●	○/●*
Option packs							
Style Sport Pack – 16" alloy wheels, privacy glass and body colour rear spoiler (does not include spoiler on Estate models)	–	○	–	–	–	–	–
Zetec Sport Pack – 17" alloy wheels and privacy glass	–	–	–	○	–	–	–
Zetec S Sport Pack – 18" alloy wheels and privacy glass ¹⁾	–	–	–	–	○	–	–
Titanium Sport Pack – 18" alloy wheels and sports Suspension ¹⁾	–	–	–	–	–	○	–
Titanium X Pack – Full leather trim with heated front seats, Bi-Xenon headlights, power fold mirrors, solar reflect windscreen and 6-way power adjustable driver seat ²⁾	–	–	–	–	–	○	–
ST Visibility Pack - Solar reflect windscreen, automatic headlights, rain sensing wipers and auto-dimming rear view mirror (ST-2 & ST-3 only)	–	–	–	–	–	–	○
Interior Styling Pack - Velour mats, stainless steel scuff plates with FOCUS logo, premium gear shift knob and handbrake handle	–	–	–	–	–	○	–

● = Standard, ○ = Optional, at extra cost, □ Part of an option pack, at extra cost. ¹⁾Not available with 1.6 Petrol or 1.6 Diesel Engines. ²⁾Includes 4-way manual front passenger seat adjust and driver/front passenger lumbar ajust. * Optional on ST-1, Standard on ST-2 and ST-3.

Specification

Interior equipment

	Studio	Style	ECOnetic	Zetec	Zetec S	Titanium	ST
Design features							
Door lever – Aluminium finish	–	●	●	●	●	●	●
Floor mats – Front, carpet	–	–	–	–	–	●	–
Floor mats – Front and rear, velour with accent edging	–	–	–	–	–	–	●
Floor mats – Front and rear, velour with aluminium finish 'FOCUS' badge	–	–	–	–	–	□	–
Gear knob – Leather with silver insert and aluminium finish ring	–	–	–	–	–	●	●
Scuff plates – Front, aluminium with 'Ford' logo	–	–	–	–	–	●	–
Steering wheel – 4-spoke (includes silver accents on Style & ECOnetic)	●	●	●	–	–	–	–
Steering wheel – 3-spoke, leather-trimmed with silver accents (4-spoke when cruise control fitted)	–	–	–	●	●	–	–
Steering wheel – 4-spoke, leather-trimmed with silver accents	–	–	–	–	–	●	–
Steering wheel – 3-spoke, leather-trimmed with sliver accents and 'ST' logo	–	–	–	–	–	–	●
Steering column – Reach and rake adjustable	●	●	●	●	●	●	●
Audio and communication systems							
Ford 6000 Radio/CD – 6 speakers	●	●	●	●	●	–	●+
Remote audio controls	–	●	●	●	●	●	●
Portable Music Connection Socket	●	●	●	●	●	●	●
Sony CD Audio System with DAB – 8 premium speakers, MP3 compatible	–	–	–	–	–	●	●++
Sony 6CD Audio System with DAB – 8 premium speakers, MP3 compatible	–	–	–	–	–	–	●+++
Sony CD Audio System with DAB, Bluetooth® Hands Free, Voice Control System and USB music connectivity port	–	–	–	○	○	–	○+
Sony 6CD Audio System with DAB, Bluetooth® Hands Free, Voice Control System and USB music connectivity port	–	–	–	–	–	○	○++
Communications Pack – Advanced Navigation System with Radio/CD (5" colour display, 6 speakers, navigation data on SD memory card) Bluetooth® Hands Free, Voice Control System and USB music connectivity port	–	○	○	○	○	○	○
DVD Touchscreen Navigation System with Radio/CD (7" colour touch screen, 8 premium speakers, MP3 compatible, navigation data on DVD) includes dual zone electronic air conditioning, rear view camera, Bluetooth® Hands Free, Voice Control System and USB music connectivity port‡	–	–	–	–	–	○	○
CD Autochanger for navigation systems – Located under front passenger's seat	–	–	–	○	–	○	–
Bluetooth® Hands Free Phone and Voice Control System (with USB music connectivity port on Titanium, ST2 & ST3)	–	○	○	○	○	○	○
Mobile Navigation with Bluetooth® Hands Free Phone, Voice Control System and USB music connectivity port (ST2 & ST3 only)	–	–	–	–	–	○	○
Climate control							
Air conditioning – Manual control	○	●	●	●	●	●	●
Air conditioning – Dual zone electronic automatic temperature control (DEATC)	–	–	–	–	–	○	○♦
Convenience features							
'Ford Power' engine start/stop push button	–	–	–	–	–	–	●
Cruise control (includes 4-spoke leather steering wheel)	–	–	–	○	○	●	–
Accessory power socket (12V)	●	●	●	●	●	●	–
Smoker's Pack (Cigar lighter in lieu of 12V power socket)	○	○	○	○	○	○	●
Centre console – Regular, with open stowage bins	●	●	●	–	–	–	–
Centre console – Premium, with sliding armrest, additional 12V power socket and large stowage bin	–	–	–	●	●	●	●
Power converter – 230V pulse charge type, limited to 150W	–	–	–	○	○	○	○
Courtesy light – For front passengers, overhead with theatre-style dimming; for rear passengers and in load compartment	●	●	●	●	●	●	●
Courtesy light – Footwell area, front and rear reading lights	–	–	–	–	–	●	–
Rear-view mirror – Auto-dimming	–	–	–	–	–	●	□
Stowage pockets – Front seat backs	–	●	●	●	●	●	●
Sunroof – Electric tilt/slide (not with overhead console)	–	–	–	–	–	○	○♦
Variable dimming of instrument cluster and radio screen display	–	–	–	–	–	●	●

Interior equipment

	Studio	Style	ECOnetic	Zetec	Zetec S	Titanium	ST
Windows – Electrically operated front with one-touch lowering on driver's side	●	●	●	●	●	–	●
Windows – Electrically operated front and rear with one-touch lowering/closing on driver's side, and global closing (not 3-door)	–	–	–	–	–	●	○
Seats							
Front seats – Comfort-style	●	●	●	–	–	–	–
Front seats – Sports-style (with driver's manual lumbar support adjustment)	–	–	–	●	●	●	–
Front seat – Driver's manual height and fore/aft adjustment	●	●	●	●	●	●	●
Front seat – Passenger's manual fore/aft adjustment	●	●	●	●	●	●	●
Front seats – Heated cushion and seatback, with 5 variable positions	–	–	–	–	–	□	●+++
Recaro Seats (ST-1 and ST-2 only) – ST Recaro-branded fabric seats, including driver's 8-way manual seat adjustment (manual height, fore/aft, backrest angle and tilt adjustment) with adjustable lumbar support, and passenger's 2-way manual seat adjustment (manual fore/aft adjustment), and 60/40 split back and cushion	–	–	–	–	–	–	●
Premium Recaro Seat (ST-3 only) – Leather trim, driver's and passenger's 10-way manual seat adjustment (manual height, fore/aft, backrest angle, tilt, and cushion length adjustment) with adjustable lumbar support, and Recaro-style 60/40 'sculpted' split back and cushion with two height-adjustable head restraints	–	–	–	–	–	–	●
Seats – Leather-trimmed (includes heated front seats and 6-way Driver's Power adjustment)	–	–	–	–	–	□	–
Rear seat – 60/40 split back and cushion	●	●		●	●	●	●
Rear seat – Folding centre armrest, with two integrated cup holders, and, on Estates only, flip-up stowage	–	–	–	–	–	●	–
Loadspace							
Auxiliary power socket (Estate only)	●	●	●	●	–	●	–
Tie-down hooks	●	●	●	●	●	●	●
Tonneau cover (Estate only)	●	●	●	●	–	●	–

● = Standard, ○ = Optional, at extra cost, □ = Part of an option pack, at extra cost.
The Bluetooth® word mark and logos are owned by the Bluetooth SIG, Inc. and any use of such marks by Ford Motor Company is under licence. Other trademarks and trade names are those of their respective owners. + ST-1 only ++ ST-2 only +++ ST-3 only *not available on ST-1

Safety and security

	Studio	Style	ECOnetic	Zetec	Zetec S	Titanium	ST
Safety							
Intelligent Protection System (IPS)	●	●	●	●	●	●	●
Anti-lock brakes with Electronic Brake-force Distribution (EBD)	●	●	●	●	●	●	●
Electronic Stability Programme (ESP) with Traction Assist and Emergency Brake Assist (EBA)	●	●	●	●	●	●	●
Hazard Warning Lights – Automatic activation of all turn indicators when emergency braking is applied	●	●	●	●	●	●	●
Airbags – Driver and front passenger*	●	●	●	●	●	●	●
Airbags – Front side impact	●	●	●	●	●	●	●
Airbags – Front and rear curtain	–	●	●	●	●	●	●
Seats - ISOFIX mounting brackets for child seat (free bracket when factory ordered. To be fitted by dealer, which may incur extra charge)	○	○	○	○	○	○	○
Deflation Detection System (DDS)	○	○	○	○	○	○	○
Security							
Remote central locking	●	–	–	–	–	–	–
Remote central double locking	–	●	●	●	●	●	●
Perimeter alarm (includes courtesy delay headlights and 2nd remote key)*	○	○	○	●	●	–	–
Thatcham CAT 1 approved perimeter and volume sensing alarm (includes courtesy delay headlights and 2nd remote key)	–	–	–	○	○	●	●
Ford Key-Free System (for ST-2 and ST-3)	–	–	–	–	–	–	○

● = Standard, ○ = Optional, at extra cost. N/C = No cost option, must be specified at time of order. * Perimeter alarm is standard Style 1.8 Petrol and Diesel derivatives.
*Note: A child seat should never be placed in the front passenger seat when the Ford vehicle is equipped with an operational front passenger's airbag. The safest place for children is properly restrained on the rear seat

Mechanical features

	Studio	Style	ECOnetic	Zetec	Zetec S	Titanium	ST
Suspension and brakes							
Front – Independent with MacPherson struts and anti-roll bar	●	●	●	●	●	●	●
Rear – Independent Control Blade multi-link system and anti-roll bar	●	●	●	●	●	●	●
Suspension – Sports	–	–	●	●	●	□	–
Suspension – Performance	–	–	–	–	–	–	●
Front brakes - Ventilated discs	●	●	●	●	●	●	●
Rear brakes - Drums	●	●	●	●	●	●	–
Rear brakes - Discs (2.0 and 2.5 petrol, 1.8 and 2.0 TDCi engines only, standard on estates)	–	●	●	●	●	●	●

● = Standard, ○ = Optional, at extra cost, □ = Part of an option pack, at extra cost.

Fuel and performance

Key data	Trans	Maximum power PS (kW)	Torque Nm (Nm with overboost)	CO ₂ emissions (g/km) ⁹⁰	Fuel consumption in L/100 km			Performance ⁹		
					Urban	Extra Urban	Combined	Max. speed (mph)	0-62 mph (secs)	31-62 mph* (secs)
3-door Focus										
1.4 Duratec	M5	80 (59)	124	155	8.7 (32.5)	5.4 (52.3)	6.6 (42.8)	102	14.1	16.3
1.6 Duratec	M5	100 (74)	150	159	8.7 (32.5)	5.5 (51.4)	6.7 (42.2)	112	11.9	13.3
1.6 Duratec	A4	100 (74)	150	179	10.3 (27.4)	5.8 (48.6)	7.5 (37.6)	107	13.6	n/a
1.6 Duratec	M5	115 (85)	155	157	8.7 (32.5)	5.4 (52.3)	6.6 (42.8)	118	10.8	13.3
1.8 Duratec	M5	125 (92)	165	167	9.5 (29.7)	5.6 (50.4)	7.0 (40.3)	123	10.3	12.1
2.0 Duratec	M5	145 (107)	185	169	9.8 (28.8)	5.4 (52.3)	7.1 (39.8)	128	9.2	11.9
2.5 Duratec ST	M6	225 (166)	320	224	13.8 (20.5)	6.8 (41.5)	9.3 (30.4)	150	6.8	6.1
1.6 Duratorq TDCi (ECOnetic)	M5	90 (66)	215	114	5.5 (51.4)	3.6 (78.5)	4.3 (65.7)	112	12.6	12.5
1.6 Duratorq TDCi (Stage V)	M5	90 (66)	215	119	5.8 (48.7)	3.8 (74.3)	4.5 (62.8)	177	12.6	12.7
1.6 Duratorq TDCi (Stage V)	M5	109 (80)	240 (260)	119	5.8 (48.7)	3.8 (74.3)	4.5 (62.8)	188	10.9	10.9
1.8 Duratorq TDCi	M5	115 (85)	280 (300)	137	6.7 (42.1)	4.3 (65.6)	5.2 (54.2)	118	10.8	9.5
2.0 Duratorq TDCi	M6	136 (100)	320 (340)	144	7.0 (40.3)	4.5 (62.7)	5.5 (51.3)	126	9.3	7.8
2.0 Duratorq TDCi	A6	136 (100)	320 (340)	154	7.8 (36.2)	4.7 (60.0)	5.8 (48.6)	124	9.6	n/a

Fuel and performance

Key data	Trans	Maximum power PS (kW)	Torque Nm (Nm with overboost)	CO ₂ emissions (g/km) ⁹⁰	Fuel consumption in L/100 km			Performance ^a		
					Urban	Extra Urban	Combined	Max. speed (mph)	0-62 mph (secs)	31-62 mph* (secs)
5-door Focus										
1.4 Duratec	M5	80 (59)	124	155	8.7 (32.5)	5.4 (52.3)	6.6 (42.8)	102	14.1	16.3
1.6 Duratec	M5	100 (74)	150	159	8.7 (32.5)	5.5 (51.4)	6.7 (42.2)	112	11.9	13.3
1.6 Duratec	A4	100 (74)	150	184	10.6 (26.7)	6.0 (47.1)	7.7 (36.7)	107	13.6	n/a
1.6 Duratec	M5	115 (85)	155	157	8.7 (32.5)	5.4 (52.3)	6.6 (42.8)	118	10.8	13.3
1.8 Duratec	M5	125 (92)	165	167	9.5 (29.7)	5.6 (50.4)	7.0 (40.3)	123	10.3	12.1
2.0 Duratec	M5	145 (107)	185	169	9.8 (28.8)	5.4 (52.3)	7.1 (39.8)	128	9.2	11.9
2.0 Duratec	A4	145 (107)	185	189	11.2 (25.1)	6.1 (46.2)	8.0 (35.3)	121	10.7	n/a
2.5 Duratec ST	M6	225 (166)	320	224	13.8 (20.5)	6.8 (41.5)	9.3 (30.4)	150	6.8	6.1
1.6 Duratorq TDCi (ECONetic)	M5	90 (66)	215	114	5.5 (51.4)	3.6(78.5)	4.3 (65.7)	112	12.6	12.5
1.6 Duratorq TDCi (Stage V)	M5	90 (66)	215	119	5.8 (48.7)	3.8 (74.3)	4.5 (62.8)	177	12.6	12.7
1.6 Duratorq TDCi (ECONetic)	M5	109 (80)	240 (260)	115	5.6 (50.4)	3.6 (78.5)	4.3 (65.7)	117	10.9	10.7
1.6 Duratorq TDCi (Stage V)	M5	109 (80)	240 (260)	119	5.8 (48.7)	3.8 (74.3)	4.5 (62.8)	188	10.9	10.9
1.8 Duratorq TDCi	M5	115 (85)	280 (300)	137	6.7 (42.1)	4.3 (65.6)	5.2 (54.2)	118	10.8	9.5
2.0 Duratorq TDCi	M6	136 (100)	320 (340)	144	7.0 (40.3)	4.5 (62.7)	5.5 (51.3)	126	9.3	7.8
2.0 Duratorq TDCi	A6	136 (100)	320 (340)	154	7.8 (36.2)	4.7 (60.0)	5.8 (48.6)	124	9.6	n/a
Focus Estate										
1.6 Duratec	M5	100 (74)	150	159	8.7 (32.5)	5.5 (51.4)	6.7 (42.2)	112	12.2	13.6
1.6 Duratec	A4	100 (74)	150	184	10.6 (26.7)	6.0 (47.1)	7.7 (36.7)	107	13.9	n/a
1.8 Duratec	M5	125 (92)	165	167	9.5 (29.7)	5.6 (50.4)	7.0 (40.3)	123	10.5	12.4
2.0 Duratec	M5	145 (107)	185	169	9.8 (28.8)	5.4 (52.3)	7.1 (39.8)	128	9.4	12.1
2.0 Duratec	A4	145 (107)	185	189	11.2 (25.1)	6.1 (46.2)	8.0 (35.3)	120	10.9	n/a
1.6 Duratorq TDCi (Stage V)	M5	90 (66)	215	119	5.8 (48.7)	3.8 (74.3)	4.5 (62.8)	177	12.9	12.9
1.6 Duratorq TDCi (ECONetic)	M5	109 (80)	240 (260)	119	5.5 (51.4)	3.6 (75.5)	4.3 (65.7)	119	11.1	10.9
1.6 Duratorq TDCi (Stage V)	M5	109 (80)	240 (260)	119	5.8 (48.8)	3.8 (74.3)	4.5 (62.8)	188	11.1	11.1
1.8 Duratorq TDCi	M5	115 (85)	280 (300)	139	6.8 (41.5)	4.4 (64.1)	5.3 (53.2)	118	10.9	9.7
2.0 Duratorq TDCi	M6	136 (100)	320 (340)	147	7.2 (39.2)	4.6 (61.3)	5.6 (50.4)	126	9.5	7.9
2.0 Duratorq TDCi	A6	136 (100)	320 (340)	154	7.8 (36.2)	4.7 (60.0)	5.8 (48.6)	124	9.9	n/a

*In 4th gear. ^aFord test figures. ^{**}All CO₂ emissions figures in g/km and fuel consumption figures in L/100 km are tested in accordance with 80/1268/EEC as amended. The CO₂ emissions and fuel consumption test figures shown in the chart do not express or imply any guarantee of the fuel consumption of a car of the class in question. All the figures are based on tests conducted on vehicles with Core equipment level and with standard wheels and tyres; optional or accessory wheels and tyres may have an effect on the emissions and fuel consumption of a vehicle. **Note** All vehicles are 5-speed manual unless stated. **DPF** = Diesel Particulate Filter. All petrol engines are equipped with a catalytic converter. Except where otherwise stated, all engines are Emissions Stage IV. **Towing limits** quoted represent the maximum towing ability of the vehicle at its Gross Vehicle Mass to restart on a 12 per cent gradient at sea level. The performance and economy of all models will be reduced when used for towing. **M5** = 5-speed manual, **M6** = 6-speed manual, **A4** = 4-speed auto, **A6** = Powershift Auto

Insurance groups

	Studio	Style	ECONetic	Zetec	Zetec S	Titanium	ST
3-door Focus							
1.4 Duratec Petrol (80 PS) (Stage IV)	4E						
1.6 Duratec Petrol (100 PS) (Stage IV)				7E			
1.6 Duratec Petrol (100 PS), Durashift 4-speed auto (Stage IV)				7E			
1.6 Duratec Petrol (115 PS) Ti-VCT (Stage IV)					7E		
1.8 Duratec Petrol (125 PS) (Stage IV)				7E	7E		
2.0 Duratec Petrol (145 PS) (Stage IV)					10E		
2.5 Duratec ST (225 PS) (Stage IV)							17E
1.6 Duratorq TDCi Diesel (90 PS) (Stage IV + DPF)			7E				
1.6 Duratorq TDCi Diesel (109 PS) (Stage V + DPF)				7E			
1.8 Duratorq TDCi Diesel (115 PS) (Stage IV)				7E	7E		
2.0 Duratorq TDCi Diesel (136 PS) (Stage IV)					10E		
2.0 Duratorq TDCi Diesel (136 PS), PowerShift 6-speed (Stage IV)					10E		
5-door Focus							
1.4 Duratec Petrol (80 PS) (Stage IV)	4E						
1.6 Duratec Petrol (100 PS) (Stage IV)		6E		7E		7E	
1.6 Duratec Petrol (100 PS), Durashift 4-speed auto (Stage IV)		6E		7E		7E	
1.6 Duratec Petrol (115 PS) Ti-VCT (Stage IV)					7E		
1.8 Duratec Petrol (125 PS) (Stage IV)		7E		7E	7E	7E	
2.0 Duratec Petrol (145 PS) (Stage IV)					10E	10E	
2.0 Duratec Petrol (145 PS), Durashift 4-speed auto* (Stage IV)						10E	
2.5 Duratec Petrol (225 PS), (Stage IV)							17E
1.6 Duratorq TDCi Diesel (90 PS) (Stage IV)			7E				
1.6 Duratorq TDCi Diesel (90 PS) (Stage V + DPF)	5E	6E					
1.6 Duratorq TDCi Diesel (109 PS) (Stage IV + DPF)			7E				
1.6 Duratorq TDCi Diesel (109 PS) (Stage V + DPF)		6E		7E		7E	
1.8 Duratorq TDCi Diesel (115 PS) (Stage IV)		6E		7E	7E	7E	
2.0 Duratorq TDCi Diesel (136 PS), Durashift 6-speed manual (Stage IV)				10E	10E	10E	
2.0 Duratorq TDCi Diesel (136 PS), PowerShift 6-speed (Stage IV)				10E	10E	10E	
5-door Focus Estate							
1.6 Duratec Petrol (100 PS) (Stage IV)	5E	6E		7E			
1.6 Duratec Petrol (100 PS), Durashift 4-speed auto* (Stage IV)		6E		7E			
1.8 Duratec Petrol (125 PS) (Stage IV)		7E		7E		7E	
2.0 Duratec Petrol (145 PS) (Stage IV)						10E	
2.0 Duratec Petrol (145 PS), Durashift 4-speed auto (Stage IV)						10E	
1.6 Duratorq TDCi Diesel (90 PS) (Stage V + DPF)	5E	6E					
1.6 Duratorq TDCi Diesel (109 PS) (Stage IV + DPF)			7E				
1.6 Duratorq TDCi Diesel (109 PS) (Stage V + DPF)		6E		7E		7E	
1.8 Duratorq TDCi Diesel (115 PS) (Stage IV)		6E		7E		7E	
2.0 Duratorq TDCi Diesel (136 PS), Durashift 6-speed manual (Stage IV)				10E		10E	
2.0 Duratorq TDCi Diesel (136 PS), PowerShift 6-speed (Stage IV)				10E		10E	

E = Exceeds security requirement for model concerned and group rating has been reduced. n/a = Not available.

Weights and loads

	Kerbweight (kg) [†]	Gross Vehicle Mass (kg)	Max. Towable Mass (kg)
Ford Focus			
1.4 Duratec Petrol (80PS) (Stage IV)	1229	1750	700
1.6 Duratec Petrol (100PS) (Stage IV)	1227	1820	1200
1.6 Duratec Petrol (100PS), Durashift 4-speed auto (Stage IV)	1255	1835	800
1.6 Duratec Petrol (115PS) Ti-VCT (Stage IV)	1239	1825	1200
1.8 Duratec Petrol (125PS) (Stage IV)	1288	1895	1200
2.0 Duratec Petrol (145PS) (Stage IV)	1307	1895	1400
2.0 Duratec Petrol (145PS) (Stage IV) Automatic	1320	1905	1300
2.5 Duratec ST (225PS) (Stage IV)	1392	1890	n/a
1.6 Duratorq TDCi Diesel (90PS) (Stage IV + DPF) EOnetic only	1338	1875	n/a
1.6 Duratorq TDCi Diesel (90PS) (Stage V + DPF)	1338	1880	1200
1.8 Duratorq TDCi Diesel (115PS) (Stage IV)	1374	1950	1500
2.0 Duratorq TDCi Diesel (136PS) (Stage IV)	1369	1950	1500
2.0 Duratorq TDCi Diesel (136PS), Powershift 6-speed (Stage IV)	1418	1950	1500

[†]Represents the lightest kerbweight assuming driver at 75kg, full fluid levels, subject to manufacturing tolerances and options, etc, fitted. **Note** all petrol engines are equipped with a catalytic converter. All vehicles are manual unless stated. **DPF** = Diesel particulate filter. **Towing limits** The performance and economy of all models will be reduced when used for towing. **Nose weight** limit is a maximum 75kg on all models. For further guidance, refer to the National Caravan Councils Towing Guide.



Dimensions

	3 & 5-door	Estate	ST
Overall length (mm)	4337	4468	4357
Overall width with / without mirrors (mm)	2020 / 1839	2020 / 1839	2020 / 1839
Overall height without / with roof carrier system (unladen) (mm)	1497/ –	1503 / 1537	1497 / –
Turning circle – kerb to kerb (m)	10.40	10.40	11.68
Luggage capacity (litres) [‡]			
5-seat mode (with tyre repair kit)	396	503	385
5-seat mode (with mini spare)	385	482	385
5-seat mode (with full-size spare)	282	482	282
2-seat mode (with tyre repair kit)	1258	1546	1247
2-seat mode (with mini spare)	1247	1525	1144
2-seat mode (with full-size spare)	1144	1525	n/a
Fuel tank capacity (litres)			
Petrol	55	55	55
Diesel	53	53	n/a

[‡]Measured in accordance with ISO 3832. Dimensions may vary dependent on the model and equipment fitted.



Focus Estate shown with an Accessory Rear Spoiler (Dealer fit at extra cost)

Colour and trim



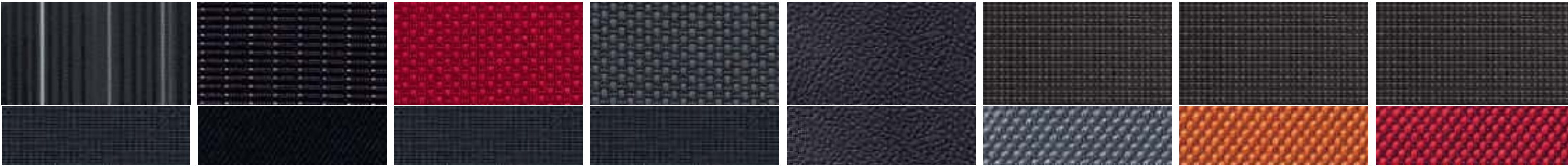
Choosing the colour for your Ford Focus is a lovely dilemma. So explore the palette of bold solid colours and great metallics and discover what is right for you.

- Solid body colours**
1 Colorado Red
2 Frozen White
- Metallic body colours***
3 Avalon
4 Chill
5 Moondust Silver
6 Ocean
7 Panther Black
8 Sea Grey
9 Tango
10 Vision



- ST metallic body colours***
11 Electric Orange
Tri-coat metallic body colour (ST only)
12 Electric White
Tri-coat metallic body colour (ST only)
13 Performance Blue
Metallic body colour (ST only)

*Metallic body colours are options at extra cost.



Ecrin in Generic Silver seat facing
Mondus in Ebony seat sides

New York in Ebony seat facing
Lux in Ebony seat sides

Tic Toc in Generic Red seat facing
Mondus in Ebony seat sides

Tic Toc in Generic Silver seat facing
Mondus in Ebony seat sides

Napoli leather in Ebony seat facing
and seat sides*

Recaro Mondus in Dark Flint seat facing
Volume in Anthracite seat sides

Recaro Mondus in Dark Flint seat facing
Volume in Generic Orange seat sides

Recaro Mondus in Dark Flint seat facing
Volume in Generic Red seat sides

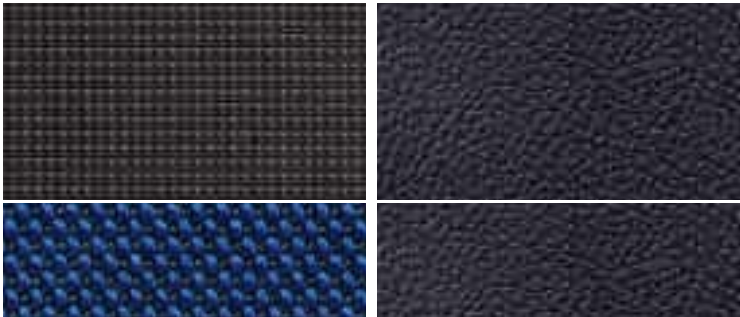
Colour and trim

Model	Studio	Style / ECONetic	Zetec / Zetec S	Titanium		ST	
Seat facing trim	Ecrin	Ecrin	Tic Toc	New York	Napoli leather*	Recaro Mondus	Recaro Napoli leather
Solid body colours							
Colorado Red			S	E	E	DR	E
Frozen White	S	S	S	E	E	DB	E
Metallic body colours*							
Chill				E	E		
Avalon		S	S	E	E		
Moondust Silver	S	S	S	E	E	DA	E
Ocean Blue	S	S	S	E	E		
Panther Black	S	S	S	E	E	DR	E
Sea Grey		S	S	E	E	DA	E
Tango		S	S	E	E		
Vision		S	S	E	E		
ST body colours							
Electric Orange						DO	E
Electric White						DB	E
Performance Blue						DB	E

S – Generic Silver, E – Ebony, DA – Dark Flint (with Anthracite bolster), DB – Dark Flint (with Performance Blue bolster), DO – Dark Flint (with Generic Orange bolster), DR – Dark Flint (with Generic Red bolster). *Metallic paint and leather trim are optional at extra cost. Napoli Leather is only available with optional Titanium X Pack. Recaro Leather is only available as standard on ST-3.

Recaro Mondus in Dark Flint
seat facing
Volume in Performance Blue
seat sides

Recaro Lucas leather in Ebony seat
facing and seat sides²⁾



The Ford Focus is covered by the Ford Perforation Warranty for 12 years from the date of first registration. Subject to terms and conditions.
Note The car images used are to illustrate body colours only and may not reflect current specification. Colours and trims reproduced within this brochure may vary from the actual colours, due to the limitations of the printing processes used.



Illustrations, descriptions and specifications. This brochure was correct at the time of going to print. However, Ford policy is one of continuous product development. The right is reserved to change specifications, colours and prices of the models and items illustrated and described in this publication at any time. For the latest details always consult your Ford Dealer. **Optional equipment.** Throughout this publication, wherever a feature is described as being an 'Option' or 'Optional Fitment/Pack', etc., you should assume that it will be at extra cost to the base vehicle, unless specifically stated to the contrary. All models and colour combinations are subject to availability. **Note.** Some images portrayed are of a pre-production model and/or are computer generated, therefore, the design/features on the final version of the vehicle may differ in various respects. In addition, some of the features shown on the vehicles may be optional. **Note.** This brochure contains both original Ford accessories as well as a range of carefully selected products from our suppliers, which are featured under their own brands. All supplier branded products are subject to warranty terms defined by the relevant suppliers and do not lie within the responsibility of Ford. **Note.** The Bluetooth® word mark and logos are owned by the Bluetooth SIG, Inc. and any use of such marks by Ford Motor Company is under licence. Other trademarks and trade names are those of their respective owners.

The Government fuel figures do not express or imply any guarantee of the fuel consumption of any particular car. The cars themselves have not been tested and there are inevitably differences between individual cars of the same model. In addition, a car may incorporate particular modifications. Furthermore, the driver's style and road and traffic conditions, as well as the extent to which the car has been driven and the standard of maintenance, will affect its fuel consumption. **Insurance groups** are only as recommended by the Association of British Insurers. You should always consult your insurance adviser for confirmation.



Allergy-tested interior All materials used in the manufacture of the interior of this vehicle meet the strict requirements of the TÜV TOXPROOF Criteria Catalogue for Vehicle Interiors by the TÜV Produkt und Umwelt GmbH and are designed to minimise the risk of allergic reactions. With doors and windows closed, the interior materials selected – together with the integrated pollen filter – protect the passengers against most allergising particles from the outdoor air. At higher temperatures, the additional use of air conditioning is recommended.



Collect Nectar points at participating Ford Dealers now. So keep a look out for the latest Ford offers at www.ford.co.uk/nectar or call the Ford Information Service on 0845 7111 888. Calls are charged at national rate and may be recorded for training purposes.



Ford recommends BP.



Published by Ford Motor Company Limited,
Brentwood, Essex, England.
Registered in England No. 235446.
FA 1491/7
BJN 305109. FoE H22E.
PN 872504/0609/110m/GBR en
June 2009.
© Ford Motor Company Limited.

www.ford.co.uk

