



CITROËN BERLINGO MULTISPACE





CITROËN  
RANGE  
TEST DRIVE



## YOUR INVITATION TO TEST DRIVE THE CITROËN OF YOUR CHOICE TODAY



**WHATEVER YOU'RE LOOKING FOR, WE'VE GOT THE MODEL.**

WHETHER IT'S A SUPERMINI, HATCHBACK, ESTATE, COUPÉ OR MPV, THERE'S A CITROËN DESIGNED FOR YOU. SO WHY NOT ACCEPT OUR NO-OBLIGATION TEST DRIVE INVITATION IN THE CITROËN OF YOUR CHOICE?

**WHAT'S MORE, IF YOU TAKE A TEST DRIVE WE'LL GIVE YOU £10 WORTH OF M&S VOUCHERS WITH OUR COMPLIMENTS.**

To arrange your test drive, click on the link below and enter your details. Your local dealer will contact you to arrange a convenient date and time for you to take your test drive. You will receive a coupon in the post that your dealer will validate following your test drive.

**> CLICK TO BOOK A CITROËN TEST DRIVE**



## THE CITROËN BERLINGO MULTISPACE. FREEDOM WITHOUT COMPROMISE.

LOOK AT THE CITROËN BERLINGO MULTISPACE AND YOU'LL KNOW. THIS IS A CAR FOR ENJOYING LIFE; FOR DOING RATHER THAN THINKING ABOUT IT. THOROUGHLY MODERN AND DYNAMIC, FROM ITS BOLD CHEVRON GRILLE AND FLOWING PROFILE, TO ITS BROAD WINDSCREEN AND OPTIONAL MODUTOP®, CITROËN BERLINGO MULTISPACE IS A MODEL OF FLEXIBLE, AIRY AND SPACIOUS PRACTICALITY.

Look inside and you will discover a place with cutting edge ergonomics, ingenious modular storage options and sheer high quality comfort for everyone. This is freedom without compromise defined.

➤ **CONTENTS:** 2 FREEDOM WITHOUT COMPROMISE 4 EXTERIOR VERSATILITY 6 INTERIOR VERSATILITY 8 SEATING  
10 ENVIRONMENTAL 11 SAFETY 12 RANGE OVERVIEW 16 OPTIONS 18 COLOUR, TRIM & WHEEL OPTIONS  
20 EQUIPMENT SPECIFICATION 22 TECHNICAL SPECIFICATION 23 ACCESSORIES 24 ENVIRONMENTAL COMMITMENT  
25 FINANCE, CARE & INSURANCE 26 GLOSSARY 27 DIMENSIONS



CITROËN  
BERLINGO  
MULTISPACE  
FREEDOM WITHOUT  
COMPROMISE



# CITROËN BERLINGO MULTISPACE

EXTERIOR  
VERSATILITY

**AT HOME, EVERYWHERE.** COMFORTABLE, BRIGHT AND BEAUTIFULLY DESIGNED, THE CITROËN BERLINGO MULTISPACE IS A LIVING SPACE FOR THOSE WHO LIKE TO REALLY LIVE.

WITH A HUGE WINDSCREEN, OPTIONAL MODUTOP® AND DEEP SIDE WINDOWS, THIS INTERIOR MAXIMISES LIGHT AND SPACE. IN OTHER WORDS, IT'S A GREAT PLACE TO BE FOR PEOPLE OF ALL AGES: YOUR HOME FROM HOME.



#### › SAFE HOUSE

Thanks to its secure tilt opening rear windows, children can enjoy plenty of fresh air in safety.

CREATED FOR LIFE AND WHERE IT TAKES YOU, THE CITROËN BERLINGO MULTISPACE THINKS OF EVERYTHING. THERE ARE USEFUL, EASY ACCESS STORAGE SPACES EVERYWHERE, SO NOTHING USEFUL GETS LEFT OUT AND YOU CAN RELAX – WE'VE DONE THE HARD WORK FOR YOU!

› EASY LOADING

The roof bars that come with the optional Modutop® are really easy to use and can quickly be changed from transversal to longitudinal. Carry what you want without hassle.

› SPACE INNOVATION

Pure original thinking: the optional split opening tailgate window gives you access to the Modutop®. You can also get at this easily from the second row seats.

› INSIDE STORY

Clever interior roof bars on XTR models are perfect for carrying light but long loads. Safe and practical, the rack also improves fuel efficiency, because there's nothing on the roof. A securing strap is also provided.

› SLIDING DOORS

Two sliding doors make getting into the Citroën Berlingo Multispace a breeze.

# Berlingo



# CITROËN BERLINGO MULTISPACE

INTERIOR  
VERSATILITY

## GENEROUS DIMENSIONS PACKED WITH TECHNOLOGY AND CLEVER FEATURES. STEP INTO THE CITROËN BERLINGO MULTISPACE AND YOU'LL FIND ALL KINDS OF USEFUL TECHNOLOGY...

NOT FOR ITS OWN SAKE BUT FOR YOURS. EVERY FEATURE IS EASY TO USE AND PART OF THE CITROËN BERLINGO MULTISPACE'S ETHOS – FREEDOM WITHOUT COMPROMISE.

A multi-function on-board trip computer, an MP3 compatible CD player and an optional speed limiter function are all designed to make life enjoyable and safe for everyone on board.



Please note: Trim shown is not available in the UK.

### › A GENEROUS BOOT

A low threshold means loading the cavernous boot is effortless. Everything is then safely concealed under the rigid parcel shelf.

### › ALL HOBBIES WELCOME

If your leisure pursuits involve awkward or bulky gear, relax. By using one of the Citroën Berlingo Multispace's seat folding combinations, you can free up the right space for your free time. A rechargeable boot torch, available as part of the Modularity Pack on XTR, sheds light on your loadspace after dark.

### › SET SPEED

An effective safety feature, the optional speed limiter keeps the Citroën Berlingo Multispace at a set speed. Press the accelerator down to return to normal driving.



### › HAVE A GOOD TRIP

The multi-function on-board trip computer feeds you vital information such as distance travelled and average fuel consumption. Scrolling through the computer menu is really easy, thanks to the control beneath the steering wheel.

### › MYWAY

Optional on VTR and XTR models, the MyWay colour satellite navigation system includes Bluetooth® and live traffic information for maximum convenience. It also features a 7" 16/9 screen, and its SD card integrated European mapping brings you voice guidance and graphics in 2D or aerial perspective.



### › CONNECTING BOX

Combining two outstanding features in one clever option on VTR and XTR models, the USB socket allows you to connect an MP3 player to play and browse its content using steering-mounted and dashboard radio controls. At the same time, the Bluetooth® system allows you to make safe hands-free calls, and browse through your phone's Contacts or Call Log.



## ONE OF THE FAMILY. INSIDE THE CITROËN BERLINGO MULTISPACE, EVERYONE CAN CLAIM THEIR OWN SPACE.

All those easily accessible storage places such as the overhead storage shelf on VTR and XTR models, pockets, the Modutop® and even under-floor stowage spaces will soon be home to the things that other cars simply leave behind.

### › DRIVER'S GLOVE BOX

Who decided that one glove box was enough for everyone? The Citroën Berlingo Multispace gives the driver a roomy one too, located cleverly behind the steering wheel.



### › UNDERFLOOR STORES

The Citroën Berlingo Multispace is packed with essential space – even under the floor by the second row seats you'll find two generous compartments.



### › STORE AND SEE

On VTR and XTR models the full-length overhead storage shelf at the front is roomy and accessible. Also, on XTR models, there's a handy mirror that lets you keep an eye on back seat 'drivers' while you're stowing things...

### › PERSONAL AIRSPACE

Air conditioning standard on XTR models and optional on VT and VTR models, enables the whole family to stay chilled.



### › FRESH THINKING

An air freshener is built into the Modutop® and works with the vents to spread a subtly scented atmosphere.

### › OVERHEAD INSPIRATION

The optional Modutop® on VTR and XTR models is a perfect example of how the Citroën Berlingo Multispace is special. Clever, useful and easy to use, it's also elegantly designed, with flowing lines that complement the whole cabin. It lets in more light but brings more intelligent storage options too. As well as the overhead storage shelf and central compartments, it now has 60 litres of rear compartment that you can access from the second row seats and the boot.





## PRACTICAL IS COMFORTABLE IS FLEXIBLE. THERE'S NO 'EITHER OR' WITH THE CITROËN BERLINGO MULTISPACE. THERE'S REAL SPACE FOR REAL PEOPLE AND THEIR BELONGINGS.

COMFORTABLE, HIGH QUALITY SEATS, WITH FRONT ARMRESTS ON VTR AND XTR MODELS, A REMOVABLE STORAGE BOX BETWEEN THE FRONT SEATS, ENDLESS FOLDING COMBINATIONS... IT ALL ADDS UP TO A NO-COMPROMISE CAR THAT HAPPILY ACCOMMODATES FAMILY, FRIENDS OR SERIOUS LOADS. IT'S UP TO YOU.

The choices on offer make everything possible. Modular seating means the back bench can be completely folded, two thirds folded or one third folded, or become three independently folded seats on XTR models. The backs also recline. The Citroën Berlingo Multispace has an interior that shifts as your priorities shift. It's endlessly adaptable. Naturally this comfort zone is also highly practical. From the glove box to an under seat drawer, you'll find there's a place for everything.



### › IN-FLIGHT

For long trips or short concentration spans, the front seat backs on XTR models are equipped with aircraft style tables and cup holders.



### › MAKE ROOM FOR SPACE

The individual, folding back seats on XTR models can be removed one by one to reveal up to 3m³ of useful load space.

### › MORE THAN JUST SEATS

The three independent foldable, tiltable and removable rear seats on XTR models offer so many configurations. For example, the backrest can be tilted and the centre backrest folds forward to form a table with two cup holders.

### › MORE SEATS

With the optional Family Pack on the 1.6HDi 90hp VTR model you get two additional foldable and removable rear seats allowing you to carry an additional two passengers. The Family Pack also brings three separate foldable and removable seats in row 2 allowing easy access to the seats in row 3.



Please note: Trim shown is not available in the UK.





## THE ENGINE ROOM. THE CITROËN BERLINGO MULTISPACE HAS A FITTINGLY WIDE CHOICE OF THOROUGHLY MODERN ENGINES.

THERE IS ONE PETROL OPTION, THE 1.6i 90HP WHICH COMPLEMENTS THREE DIESELS OF 75HP, 90HP AND 110HP. THE LATTER ENGINE IS EQUIPPED WITH A DIESEL PARTICULATE FILTER SYSTEM (DPFS) FOR REDUCED ENVIRONMENTAL IMPACT. WHICHEVER YOU CHOOSE, YOU CAN EXPECT BENCHMARK RELIABILITY.

### › ROLL WITH IT

No detail has been overlooked with the Citroën Berlingo Multispace. Even the tyres fitted as standard are the latest Energy Saver® designs from Michelin. By having incredibly low rolling resistance as you drive, the fuel consumption is reduced by up to 4%.



# SAFETY WITHOUT COMPROMISE. VERSATILE, COMFORTABLE AND DISTINCTIVE IT MAY BE, BUT FIRST AND FOREMOST, THE CITROËN BERLINGO MULTISPACE IS A MODEL OF ADVANCED SAFETY.

IT STARTS WITH THE TECHNOLOGY THAT GIVES YOU SECURE HANDLING AND ROADHOLDING. ANTI-LOCK BRAKING SYSTEM (ABS), EMERGENCY BRAKING ASSISTANCE (EBA), ELECTRONIC BRAKEFORCE DISTRIBUTION (EBD) AND UP TO SIX AIRBAGS ARE ALL DESIGNED TO KEEP YOU AND YOUR PRECIOUS CARGO SAFE AT EVERY TURN. IT'S THE KIND OF ENGINEERING THAT INSPIRES CONFIDENCE AND HELPS YOU ENJOY THE RIDE.



## › NO MORE HILL STARTS!

Now you needn't use the handbrake to restart on hills. The Hill Start Assist function and Electronic Stability Programme (ESP), part of the optional Safety Pack on VTR and XTR models, maintains drive to the wheels just long enough for the driver to move his or her foot from the brake to the accelerator. It's another innovation that simply makes life easier.



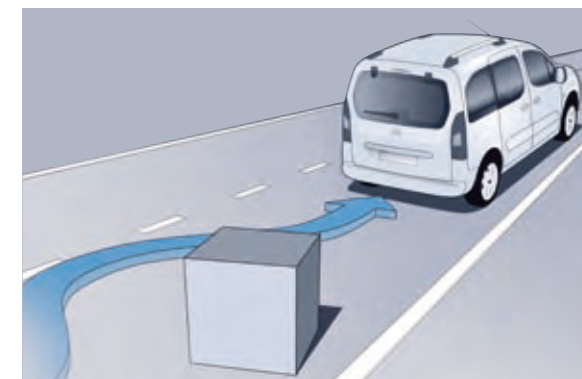
## › GRIP CONTROL ELECTRONIC STABILITY PROGRAMME (ESP)

Grip Control Electronic Stability Programme (ESP) is a traction control system which improves vehicle traction in specific driving conditions such as snow, mud and sand, via a dashboard-mounted dial with 5 different modes: standard ESP, Snow, All Road, Sand and ESP Off.



## › UP TO SIX AIRBAGS

With two for driver and front passenger standard on all models, 2 front lateral airbags standard on XTR models and the optional Safety and Safety Plus Packs adding 2 lateral airbags on VTR models and 2 curtain airbags on VTR and XTR models, Citroën Berlingo Multispace's occupants are thoroughly protected from every angle.



## › ANTI-LOCK BRAKING SYSTEM (ABS)

With car-like roadholding and Anti-lock Braking System (ABS) as standard, the Citroën Berlingo Multispace is designed to keep you out of danger in all conditions.





# CITROËN BERLINGO MULTISPACE

RANGE  
OVERVIEW



**WHICH CITROËN BERLINGO MULTISPACE?**  
THERE ARE THREE MODELS TO CHOOSE  
BETWEEN. FROM VT TO VTR TO XTR YOU WILL  
FIND SUPERB LEVELS OF EQUIPMENT AND  
DESIGN DETAIL.

IN KEEPING WITH THE SPIRIT OF A SPACIOUS, FLEXIBLE CAR, NOTHING USEFUL OR ENJOYABLE HAS BEEN  
LEFT OUT.

# CITROËN BERLINGO MULTISPACE VT

## VT: RAISING THE STANDARD.

WITH SUCH A GENEROUS SPECIFICATION, YOU COULD SAY THAT THERE'S NO SUCH THING AS 'STANDARD' WITH THE CITROËN BERLINGO MULTISPACE.

### > CITROËN BERLINGO MULTISPACE VT SPECIFICATION INCLUDES:

- ABS with Electronic Brakeforce Distribution (EBD)
- Emergency Braking Assistance (EBA)
- Variable power assisted steering
- Driver's and passenger's airbag
- RDS stereo radio/MP3 compatible CD player with steering mounted controls
- Twin sliding side doors with tilt opening windows
- Height and reach adjustable steering wheel
- Tailgate
- Row 2 split/folding 1/3-2/3, tiltable and removable bench seat
- 15" 'Moyo' wheel covers (set of four)
- PVC floor covering in boot
- Multi-function on-board trip computer
- Retractable and removable luggage cover
- **Standard Equipment Pack** – central locking and front electric windows



		CO <sub>2</sub> EMISSIONS (G/KM)
PETROL ENGINE AVAILABILITY		
	1.6i 90hp	195
DIESEL ENGINE AVAILABILITY		
	1.6HDi 75hp	149
	1.6HDi 90hp	149



# CITROËN BERLINGO MULTISPACE

VTR

## VTR: ADDING VALUE.

CHOOSE VTR AND THE SPECIFICATION GROWS... STYLE, SECURITY AND COMFORT ARE ALL ENHANCED, FROM FRONT FOG LIGHTS TO REMOTE CONTROL CENTRAL LOCKING.

➤ CITROËN BERLINGO MULTISPACE **VTR** SPECIFICATION IN ADDITION TO VT INCLUDES:

- **Look Pack** – body colour painted side rubbing strips, front and rear bumpers, door handles and door mirrors
- **Super Plus Pack** – high-frequency multi-function flip remote control central locking with deadlocks, electric child locks, front electric windows with 'one-touch' operation and electrically adjustable and heated door mirrors
- **Comfort Pack** – height-adjustable driver's seat, front armrests and storage drawer under driver's seat
- Carpet floor covering in boot
- 15" 'Feroe' wheel covers (set of four)
- Front fog lights
- Overhead storage shelf



	CO <sub>2</sub> EMISSIONS (G/KM)
PETROL ENGINE AVAILABILITY	
1.6i 90hp	195
DIESEL ENGINE AVAILABILITY	
1.6HDi 75hp	149
1.6HDi 90hp	149

# CITROËN BERLINGO MULTISPACE XTR

## XTR: PURE STYLE PLUS.

XTR IS THE MOST COMPREHENSIVE CITROËN BERLINGO MULTISPACE SPECIFICATION. FROM THE HIGHLY DISTINCTIVE GRILLE DESIGN AND SILVER REAR BUMPER INSERT, TO THE LONG LIST OF PRACTICAL, SAFETY AND STYLISH EQUIPMENT, THIS IS THE ULTIMATE EXPRESSION OF A CAR THAT BRINGS YOU MORE OF WHAT MATTERS.

### › CITROËN BERLINGO MULTISPACE XTR SPECIFICATION IN ADDITION TO VTR INCLUDES:

- Air conditioning
- Longitudinal roof bars
- **All Road Pack** – underbody engine protection, raised suspension and 16" 'Rangiroa' wheel covers (set of four)
- **XTR Look Pack** – larger black side rubbing strips, front fog lights, silver effect 'u-shape' insert in front bumper, silver effect lower bumper insert and silver effect fog lights surround
- **Modularity Pack** – front lateral airbags, three separate foldable, tiltable and removable seats in row 2, aircraft style tables on rear of front seats with cup holders, load retention net, interior mounted roof bars, 12 volt socket and removable and rechargeable torch in boot. **Child Pack** – child surveillance mirror, auxiliary socket in glove box, side window blinds and storage nets in row 2 and central storage console



DIESEL ENGINE AVAILABILITY		CO <sub>2</sub> EMISSIONS (G/KM)
1.6HDi 90hp		149
1.6HDi 110hp DPFS <sup>1</sup>		140

<sup>1</sup> Diesel Particulate Filter System



# CITROËN BERLINGO MULTISPACE

## OPTIONS

**CREATE YOUR CAR.** STORAGE OPTIONS THAT MEET YOUR NEEDS TO THE MILLIMETRE. MORE SAFETY AND SECURITY. ADDED COMFORT...

THE CITROËN BERLINGO MULTISPACE OFFERS A WEALTH OF CHOICES. YOU CAN DECIDE WHAT GOES INTO YOURS.

### › SPLIT OPENING TAILGATE

A genuine innovation on the Citroën Berlingo Multispace, the optional split opening tailgate allows access to its cabin roofbox. It also offers access to the boot above and below the parcel shelf and allows for easy access even when space is at a premium.



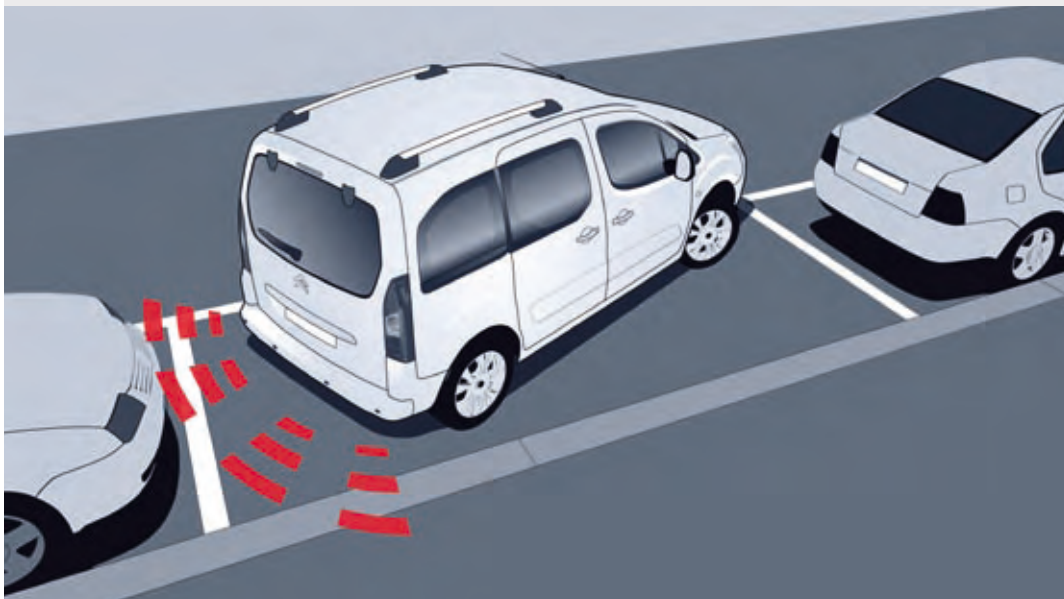
### › MODUTOP®

The optional Modutop® not only adds longitudinal or transversal roof bars, a scented air freshener, 12 volt socket and rechargeable torch to your Citroën Berlingo Multispace but incorporates numerous, intelligent storage options and allows in more natural light thanks to the glass roof sections.



## > REAR PARKING SENSORS

Parking your Citroën Berlingo Multispace shouldn't add to the burden of a busy day. Optional rear parking sensors as part of Detection Pack let you manoeuvre safely and quickly into the tightest spots, fully aware of hidden obstacles.



## > VISIBILITY PACK

Safe progress is enhanced by optional automatic rain-sensitive windscreen wipers and automatic illumination of headlamps. As weather conditions change, the Citroën Berlingo Multispace looks after you.

	VT	VTR	XTR
<b>OPTION SUMMARY</b>			
<b>Family Pack</b> – five separate foldable, tiltable and removable rear seats (3 seats in row 2, 2 seats in row 3), lateral airbags, aircraft style tables on rear of seats, luggage cover (excluding boot liner) and 12 volt socket		○ <sup>1/2</sup>	
<b>Safety Pack</b> – front lateral and curtain airbags, Electronic Stability Programme (ESP) with traction control and Hill Start Assist function		○	
<b>Safety Plus Pack</b> – curtain airbags, Grip Control Electronic Stability Programme (ESP) with traction control and Hill Start Assist function Anti-theft alarm		○	○ <sup>3/4</sup>
<b>Detection Pack</b> – electrically folding door mirrors, rear parking sensors and cruise control with speed limiter		○	○
<b>Visibility Pack</b> – automatic rain-sensitive windscreen wipers and automatic illumination of headlamps			○
<b>Connecting Box</b> – Bluetooth® system with USB socket Air conditioning	○ <sup>7</sup>	○ <sup>5</sup> ○	○ <sup>5/6</sup> ●
<b>Chill Pack</b> – air conditioning, Modutop®, longitudinal or transversal roof bars, scented air freshener, 12 volt socket and removable and rechargeable torch in boot		○ <sup>2</sup>	
<b>MyWay</b> – colour satellite navigation, auxiliary socket, live traffic information, European mapping and Bluetooth® system		○ <sup>5</sup>	○ <sup>5</sup>
Modutop®, longitudinal or transversal roof bars, scented air freshener, 12 volt socket and removable and rechargeable torch in boot		○ <sup>2</sup>	○ <sup>8</sup>
Split opening tailgate with dark tinted rear side and tailgate windows		○	○
16" 'Tikehau' alloy wheels (set of four)			○ <sup>4</sup>
Metallic/Pearlescent paint	○	○	○
Black paint	○	○	○

- Standard equipment
- Optional factory fitted equipment

- Available on 1.6HDI 90hp model only.
- Family Pack not compatible with Modutop® or Chill Pack.
- When ordered, 16" 'Rangiroa' are replaced by 15" 'Feroe' wheel covers.
- Safety Plus Pack and 16" 'Tikehau' alloy wheels are not compatible.
- Mobile phone compatibility can vary by phone manufacturer. Please contact your Dealer for further compatibility information. Connecting Box and MyWay are not compatible.
- When ordered, standard auxiliary socket is not present.
- Also includes remote control central locking, electric windows with 'onetouch operation' (driver's side) and electrically adjustable and heated door mirrors.
- When ordered, standard interior mounted roof bars are not present.

**COLOURS AND TRIMS.** THE CITROËN BERLINGO MULTISPACE  
IS AN INDIVIDUAL CHOICE. SO IS THE PERFECT COLOUR...



Passion Red



Black



Polar White



Iron Grey (pearlescent)



Wicked Red (pearlescent)



Sahara Gold (metallic)



Kyanos Blue (metallic)



Arctic Steel (metallic)



Tivoli Blue (metallic)



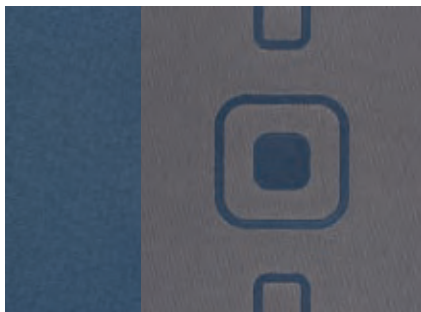
Persamos Grey (metallic)





Standard on VT models

Grey 'Mobilis' cloth



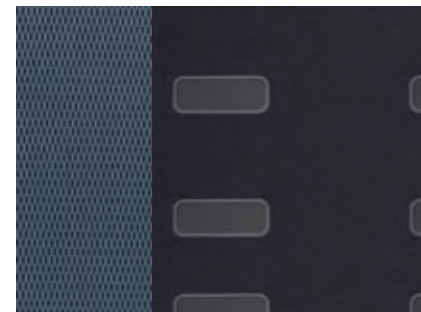
Standard on VTR models

Blue 'Sokoban' cloth<sup>1</sup>



Standard on VTR models

Red 'Sokoban' cloth<sup>2</sup>



Standard on XTR models

Blue 'Tektonik' cloth

15" 'MOYO' WHEEL COVERS Set of four Tyres: 205/65 R15		
VT	VTR	XTR
•		



15" 'FEROE' WHEEL COVERS Set of four Tyres: 205/65 R15		
VT	VTR	XTR
	•	



16" 'RANGIROA' WHEEL COVERS Set of four Tyres: 215/55 R16		
VT	VTR	XTR
		•



16" 'TIKEHAU' ALLOY WHEELS Set of four Tyres: 215/55 R16		
VT	VTR	XTR
		◦



	VT	VTR	XTR
COLOURS			
Polar White	•	•	•
Arctic Steel	•	•	•
Iron Grey	•	•	•
Passion Red	•	•	•
Black	•	•	•
Tivoli Blue		•	•
Sahara Gold		•	•
Persamos Grey		•	•
Wicked Red		•	•
Kyanos Blue		•	•
TRIMS			
Grey 'Mobilis' cloth	•		
Blue 'Sokoban' cloth		• <sup>1</sup>	
Red 'Sokoban' cloth		• <sup>2</sup>	
Blue 'Tektonik' cloth			•

- Standard equipment
- Optional factory fitted equipment

<sup>1</sup> Blue 'Sokoban' cloth comes with the following body colours: Polar White, Iron Grey, Kyanos Blue, Tivoli Blue and Arctic Steel.

<sup>2</sup> Red 'Sokoban' cloth comes with the following body colours: Passion Red, Black, Sahara Gold, Wicked Red and Persamos Grey.

# CITROËN BERLINGO MULTISPACE

## EQUIPMENT SPECIFICATION

- Standard equipment
- Optional factory fitted equipment

- <sup>1</sup> Available as part of XTR Look Pack.
- <sup>2</sup> Available as part of Look Pack.
- <sup>3</sup> 1.6Hdi 110hp model only.
- <sup>4</sup> Available as part of Modularity Pack.
- <sup>5</sup> Interior roof mounted bars not present if optional Modutop® is ordered.
- <sup>6</sup> Available as part of Standard Equipment Pack.
- <sup>7</sup> Available as part of Super Plus Pack.
- <sup>8</sup> Auxiliary socket not present if optional Connecting Box or MyWay is ordered.
- <sup>9</sup> Available only as part of optional Family Pack.
- <sup>10</sup> Available only as part of optional MyWay.

	VT	VTR	XTR
<b>SAFETY &amp; SECURITY</b>			
ABS with Electronic Brakeforce Distribution (EBD)	●	●	●
Emergency Braking Assistance (EBA)	●	●	●
Driver's airbag	●	●	●
Passenger's airbag with cut-off device	●	●	●
Laminated windscreen	●	●	●
High level third brake light	●	●	●
Rear fog light with twin reversing lights	●	●	●
Automatic activation of hazard warning lights (in case of rapid deceleration or impact)	●	●	●
Fuel cut-off device	●	●	●
Height-adjustable front seat belts with pre-tensioners	●	●	●
Two outer rear seats Isofix child seat anchorage points	●	●	●
Height-adjustable front head restraints	●	●	●
Transponder immobiliser	●	●	●
Retractable and removable luggage cover	●	●	●
<b>Standard Equipment Pack</b> – central locking and front electric windows	●		
<b>Super Plus Pack</b> – high-frequency multi-function plip remote control central locking with deadlocks, electric child locks, front electric windows with 'one-touch' operation and electrically adjustable and heated door mirrors		●	●
<b>All Road Pack</b> – underbody engine protection, raised suspension and 16" 'Rangiroa' wheel covers			●

	VT	VTR	XTR
<b>DRIVER INFORMATION</b>			
Multi-function on-board trip computer	●	●	●
Steel spare wheel	●	●	●
Audible driver's seatbelt 'unfastened' warning	●	●	●
Lockable fuel cap	●	●	●
Rev counter	●	●	●
Digital clock	●	●	●
Audible lights-on and key-in-ignition warning	●	●	●
Maintenance indicator	●	●	●
Coolant indicator	●	●	●
Fuel gauge	●	●	●
Handbrake warning light	●	●	●
Indicator warning light	●	●	●
Side headlamps and main beam warning lights	●	●	●

	VT	VTR	XTR
<b>STYLE</b>			
<b>EXTERIOR</b>			
Twin sliding side doors	●	●	●
Tailgate	●	●	●
Black door mirrors	●		
Black front and rear bumpers	●		
Black side rubbing strips	●		● <sup>1</sup>
Black door handles	●		●
<b>Look Pack</b> – front fog lights, body colour painted side rubbing strips, front and rear bumpers, door handles and door mirrors		●	
Body colour painted door mirrors		● <sup>2</sup>	●
<b>XTR Look Pack</b> – larger black side rubbing strips, front fog lights, silver effect 'u-shape' insert in front bumper, silver effect lower bumper insert and silver effect fog lights surround			●
15" 'Moyo' wheel covers (set of four)	●		
15" 'Feroe' wheel covers (set of four)		●	
16" 'Rangiroa' wheel covers (set of four)			●
Air deflector			● <sup>3</sup>
<b>INTERIOR</b>			
PVC floor covering in boot	●		
Carpet floor covering in boot		●	●
Interior mounted roof bars			● <sup>4/5</sup>

	VT	VTR	XTR
<b>COMFORT &amp; CONVENIENCE</b>			
Variable power assisted steering	●	●	●
Height and reach adjustable steering wheel	●	●	●
Cigarette lighter	●	●	●
Driver's and passenger's sunvisor	●	●	●
Front electric windows	● <sup>6</sup>		
Front electric windows with 'one-touch' operation		● <sup>7</sup>	● <sup>7</sup>
Air conditioning	○	○	●
<b>Modularity Pack</b> – front lateral airbags, three separate foldable, tiltable and removable seats in row 2, aircraft style tables on rear of front seats with cup holders, load retention net, interior mounted roof bars, 12 volt socket and removable and rechargeable torch in boot. <b>Child Pack</b> – child surveillance mirror, auxiliary socket in glove box, side window blinds and storage nets in row 2 and central storage console			● <sup>5/8</sup>

	VT	VTR	XTR
<b>LIGHTING &amp; VISIBILITY</b>			
Tilt opening windows in row 2 and fixed windows in row 3	•	•	•
Two-speed intermittent front windscreen wipers	•	•	•
Automatic illumination of cabin lighting via a ceiling mounted button	•	•	•
Height-adjustable headlamps	•	•	•
Electrically adjustable and heated door mirrors		•	•
Front fog lights		• <sup>2</sup>	• <sup>1</sup>
<b>SEATING</b>			
Head restraints	•	•	•
Row 2 split/folding 1/3-2/3, tiltable and removable bench seat	•	•	
<b>Comfort Pack</b> – height-adjustable driver's seat, front armrests and storage drawer under driver's seat		•	•
Row 2 three individual split/folding, tiltable and removable seats		○ <sup>9</sup>	• <sup>4</sup>
<b>STORAGE</b>			
Lidded glove box	•	•	•
Underfloor compartments in row 2	•	•	•
Overhead storage shelf		•	
Overhead storage shelf with interior mounted roof bars			• <sup>4/5</sup>
Front seat back pockets		•	•
Longitudinal roof bars			•
<b>IN-CAR ENTERTAINMENT</b>			
RDS stereo radio/MP3 compatible CD player and steering mounted controls	•	•	•
Auxiliary socket in glove box		○ <sup>10</sup>	• <sup>4/8</sup>





# CITROËN BERLINGO MULTISPACE

## TECHNICAL SPECIFICATION



53.3mpg  
on 1.6HDi  
110hp DPFS



140g/km CO<sub>2</sub>  
on 1.6HDi  
110hp DPFS

† Diesel Particulate Filter System

\* XTR models

	PETROL MODEL	DIESEL MODELS			
	1.6i 90hp	1.6HDi 75hp	1.6HDi 90hp	1.6HDi 90hp with Family Pack (7 seater)	1.6HDi 110hp DPFS†
ENGINE					
Capacity (cc)	1587	1560	1560	1560	1560
Cylinders	4 in line	4 in line	4 in line	4 in line	4 in line
Bore and stroke (mm)	78.5x82.0	75.0x88.3	75.0x88.3	75.0x88.3	75.0x88.3
Max power CEE (kW/rpm)	66/5800	55.2/4000	66.2/4000	66.2/4000	80/4000
Max torque CEE (Nm/rpm)	132/2500	185/1750	215/1750	215/1750	240/1750
Fuel system	Multi-point electronic fuel injectionHigh pressure direct diesel injection				
TRANSMISSION					
	Five speed manual	Five speed manual			
(All figures driver alone) PERFORMANCE					
Max speed (mph)	99	94	100	99	107
0-62mph (secs)	15.3	17.1	14.3	15.3	12.5
Standing 1000m (secs)	36.7	38.0	36.0	36.7	34
(Official Government test fuel consumption figures) ECONOMY Litres/100km (mpg)					
Urban cycle	10.8 (26.2)	7.0 (40.4)	7.0 (40.4)	7.2 (39.2)	6.4 (44.1)
Extra urban	6.8 (41.5)	5.0 (56.5)	5.0 (56.5)	5.2 (54.3)	4.8 (58.9)
Combined	8.2 (34.4)	5.7 (49.6)	5.7 (49.6)	5.9 (47.9)	5.3 (53.3)
CO <sub>2</sub> EMISSIONS (g/km)					
	195	149	149	154	140
Please note: the maximum plated weights must not be exceeded WEIGHTS (kg)					
Kerb weight	1397	1407	1407	1524	1429
Max laden weight	2025	2040	2040	2170	2065
Max towing weight braked/unbraked	1200/735	1200/740	1300/740	1170/750	1300/750
Max tow hitch download	50	50	55	70	55
Max roof rack load	100	100	100	100	100
BRAKES					
	Ventilated discs/Solid discs	Ventilated discs/Solid discs			
STEERING					
	Variable power assisted steering	Variable power assisted steering			
Number of turns lock to lock	2.89	2.89			
Turning circle between kerbs (m)	11.0	11.0			
SUSPENSION					
Front suspension	Independent MacPherson strut wheels with lower wishbone suspension arms; coil springs; integral, telescopic, hydraulic dampers and anti-roll bar				
Rear suspension	Independent trailing arm suspension with semi-deformable transverse beam; coil springs; inclined shock absorbers on hydraulic mounts and anti-roll bar				
FUEL TANK CAPACITY Litres (gallons)					
	60 (13.2)	60 (13.2)			
EXTERIOR DIMENSIONS (mm)					
Length/Width/Height	4380/1810/1852	4380/1810/1852/1862*			
Wheelbase	2728	2728			
BOOT VOLUMES & DIMENSIONS					
Seats up - below parcel shelf (litres)	675	675	675	650	675
Seats down - up to roof (litres)	3000	3000	3000		3000
Depth under parcel shelf (mm)	599	599	599		599
Third row seats up (litres)				100	
Third row seats down (litres)				470	

FREEDOM OF CHOICE. THE CITROËN BERLINGO MULTISPACE'S ACCESSORIES SET YOU FREE TO ENHANCE THE CORE QUALITIES OF AN EXTRAORDINARY CAR. FROM TOMTOM TO TOWBALLS, FROM LUXURY TOUCHES TO PRACTICAL EQUIPMENT, YOU'LL FIND THE SOLUTIONS YOU'RE LOOKING FOR.

Visit [www.accessories.citroen.co.uk](http://www.accessories.citroen.co.uk) to view the full range of Citroën Berlingo Multispace accessories.

A



B



#### > ROOF BOXES & MP3 ADAPTOR

Add up to 430 litres of extra storage to your new Citroën Berlingo Multispace with a specially designed roof box (A). Enjoy music from your own MP3 player and control your song selection through the dashboard stereo thanks to this clever little MP3 adaptor (B).

MP3 player not included.



#### > 1. REVERSE PARKING SENSOR KIT

Parking becomes stress-free with Citroën's reverse parking sensor kit, which is subtly integrated into your Citroën Berlingo Multispace's rear bumper.

#### > 2. TOMTOM SATELLITE NAVIGATION

TomTom satellite navigation devices to suit any budget and ensure you and your new Citroën Berlingo Multispace stay on the right road.

2



3



4



#### > 3. FIXED SWAN NECK TOWBALL

Designed to deliver the highest standards of safety and strength, this towing system expands your Citroën Berlingo Multispace's legendary versatility.

#### > 4. FRONT MUDFLAPS

Made to measure mudflaps protect bodywork and enhance safety in poor weather.

## CITROËN BERLINGO MULTISPACE ACCESSORIES

## GREEN EFFICIENCY. CITROËN HAS BEEN PIONEERING CLEANER, MORE FUEL-EFFICIENT MOTORING, SUCH AS THE COMMON RAIL HDi ENGINES NOW FITTED IN ALL NEW CITROËN DIESELS, LONG BEFORE ALL THE HYPE...

CITROËN HAS ALWAYS BEEN AT THE FOREFRONT OF GREENER TECHNOLOGY AND THE CITROËN BERLINGO MULTISPACE IS NO EXCEPTION. TODAY, WE HAVE ONE OF THE UK'S WIDEST RANGES OF LOW EMISSION VEHICLES – THREE OF WHICH ARE IN THE TOP FOUR FOR LOW CO<sub>2</sub> AND FUEL-EFFICIENCY. WE ALSO PRODUCE ONE OF THE UK'S MOST ECONOMICAL LIGHT COMMERCIAL VEHICLES, THE CITROËN NEMO VAN.



### › INTRODUCING A MORE ECOLOGICAL CAR

The Citroën C-Cactus concept, a car designed on ecological principles. It includes a significant proportion of recycled or recyclable materials and, like the plant it is named after, it is low on liquid consumption. At the same time, Citroën C-Cactus is designed to be no more expensive than a mid-range family car. This can be attributed to the use of new materials and to a rational design process using a smaller number of parts. Citroën C-Cactus is an essential vehicle reflecting a new vision of the car, many of its thoughts and themes will appear in modern Citroën vehicles to come.

### › AIRDREAM – A BENCHMARK

When it comes to the environment we wanted to show our genuine commitment as well as our profound expertise, so we have devised a benchmarking scheme with the signature 'Airdream' reserved exclusively for the cleanest vehicles in our range. To qualify for the Airdream signature, vehicles must meet three standards:

1. a) CO<sub>2</sub> emissions of 120g/km or less
- b) fitted with DPFS with CO<sub>2</sub> below 158g/km.
2. Manufacturing quality of ISO14001.
3. 95% of recoverable materials.



# DRIVE YOUR WAY.

GET BEHIND THE WHEEL OF YOUR NEW CITROËN BERLINGO MULTISPACE, WITH CITROËN'S RANGE OF FINANCE AND INSURANCE PRODUCTS.

## CITROËN FINANCIAL SERVICES PURCHASE PLAN

Own your vehicle with this flexible package designed to fit your budget.

## CITROËN FINANCIAL SERVICES ELECT 3

A new Citroën car every two or three years with monthly payments structured to suit your budget.

## CITROËN FINANCIAL SERVICES ELECT 4

Enjoy the convenience of a new car without the stress and hassle of ownership.

➤ TO FIND OUT MORE ABOUT CITROËN PRODUCTS AND SERVICES, GO TO [WWW.CITROEN.CO.UK](http://WWW.CITROEN.CO.UK) OR CONTACT YOUR CITROËN DEALER.

## FOR BUSINESS USERS

### CITROËN CONTRACT MOTORING HIRE PURCHASE

A tried and tested finance package that allows you to own your vehicle.

### CITROËN CONTRACT MOTORING BUSINESS LEASE

An alternative to vehicle ownership that allows you to control your business cash flow and gain tax efficiencies.

### CITROËN CONTRACT MOTORING LEASE PURCHASE

Own a vehicle with a finance solution that offers ultimate flexibility to complement your business cash flow.

### CITROËN CONTRACT MOTORING CONTRACT HIRE

A non-ownership finance solution that keeps costs fixed and risks low.

➤ FOR MORE INFORMATION ON CITROËN FLEET AND BUSINESS SALES, PLEASE CALL CITROËN FLEET CONNECT ON 08457 940 940 OR LOOK US UP AT [WWW.CITROEN.CO.UK/FLEET](http://WWW.CITROEN.CO.UK/FLEET)

## ➤ ESSENTIAL CARE.

CITROËNS ARE RENOWNED FOR THEIR RELIABILITY – AND THE CITROËN BERLINGO MULTISPACE IS NO EXCEPTION. WITH THE ADDED REASSURANCE OF A WARRANTY, ROUTINE SERVICING AND MAINTENANCE, AS WELL AS 24-HOUR ROADSIDE ASSISTANCE, YOU ARE PROTECTED.

### CITROËN WARRANTY

Every new Citroën car has the benefit of a 3 year\* warranty package, plus a 12 year anti-perforation\*\* warranty and a 3 year paint warranty.

\* 2 years' unlimited warranty. No-fee customer option of 1 year's Dealer provided extended warranty, only on cars sourced from Citroën UK Limited. Note: Dealer provided warranty is limited to 60,000 miles for cars.

\*\* Against all internal to external perforation to bodywork or underbody.

### CITROËN ASSISTANCE

For all models except Citroën C6: In response to a free telephone call in the UK, Citroën Assistance brings rapid expert roadside assistance to you in an emergency. It comes free of charge for a full year and operates 24 hours a day in all parts of the UK and Europe. Services include nationwide recovery for both car and passengers, a home call service, replacement vehicle, hotel accommodation and vehicle storage if required. Please note, Citroën Assistance only applies to incidents covered by the new vehicle warranty, and excludes non-vehicle faults, such as running out of fuel, misfuelling, loss of keys, lock-ins, road traffic accidents and punctures/wheel changes. Citroën C6: Citroën Assistance covers all incidents and for a period of 3 years. Full details are available on request from Citroën UK via [cuk\\_contactcentre@citroen.com](mailto:cuk_contactcentre@citroen.com)

### CITROËN MAINTENANCE

From roadside assistance to replacing wear and tear parts or regular servicing, with Citroën Maintenance you have total peace of mind. For a one-off fee or low monthly payment, our experienced engineers will take care of your Citroën, whatever happens. To find out more, contact your Citroën Dealer or Citroën Authorised Repairer.

### CITROËN SERVICING

Available up to 1 year from your vehicle's registration date, but before its first chargeable service, a Citroën Servicing Package enables you to pay in advance for your vehicle's servicing needs for 3 years/35,000 miles. For further information, please ask a member of staff or pick up a leaflet today.

### CITROËN EXTENDED WARRANTY

With a Citroën Extended Warranty, we offer you the opportunity to continue your care-free motoring for a further 1 or 2 years beyond the 3 year warranty and up to 120,000 miles.

To find out more, contact your Citroën Dealer or call the Customer Contact Centre on 0844 463 3500.

Extended Warranty insurance is underwritten by Pinnacle Insurance Plc which is authorised and regulated by the Financial Services Authority.

# CITROËN BERLINGO MULTISPACE FINANCE, CARE & INSURANCE

## CITROËN INSURANCE

### CITROËN INSURANCE INSTANT COVER

To help you drive away your new car without delay, we offer Instant Cover insurance, providing you with 7 days comprehensive car insurance, for free!

### CITROËN INSURANCE MOTOR INSURANCE

Citroën Insurance has been designed specifically for our vehicles. You don't just get repairs you get Citroën expertise, service, quality and parts. So, when the time comes to renew your insurance cover, call Citroën Insurance on 0870 024 2725.

Lines open 8am - 8pm weekdays, 9am - 5pm Saturdays. Max call charge from a BT landline is 8p per minute. Calls from other networks may vary. Alternatively, visit [www.citroen.co.uk](http://www.citroen.co.uk) for more information or to apply online.

### CITROËN INSURANCE FOR BUSINESS

If you are a business user (Self employed, sole trader, partnership, Limited company) you may want to consider a Citroën Insurance for Business policy. Simply call 0845 301 5975.

Lines open 9am - 5pm weekdays only.

Citroën Insurance is underwritten by UK Insurance Ltd. UK Insurance Limited is authorised and regulated by the Financial Services Authority. Citroën Insurance is a trading style of Banque PSA Finance UK which is authorised by the "Organisme pour le Registre des Intermédiaires en Assurance" (ORIAIS) in France under number 07 008 501 and regulated by the French regulatory authority, the "Autorité de Contrôle des Assurances et des Mutuelles" (ACAM) and subject to limited regulation by the Financial Services Authority in respect of some aspects of the conduct of UK Insurance mediation business. Details on the extent of our regulation by the Financial Services Authority are available from Banque PSA Finance UK on request.

# CITROËN BERLINGO MULTISPACE

## GLOSSARY

### › HIGH-PRESSURE DIRECT INJECTION DIESEL ENGINE

Our HDi diesel engines operate with the fuel under extremely high pressure, enabling microscopically precise injection control. With this level of management it's possible to inject at different times during the same engine stroke allowing total control over the combustion process. This has allowed our engineers to reduce carbon monoxide emissions by 40%, unburned hydrocarbons by 50% and engine particulates by 60%. Fuel consumption is 20% lower than a prechamber diesel engine, resulting in an equivalent reduction in CO<sub>2</sub> emissions and thanks to the torque available at low engine speed it could be argued that driveability is now better than in petrol engined cars.

### › DIESEL PARTICULATE FILTER SYSTEM (DPFS)

Our unique DPFS collects exhaust particulates (soot) that would have been bound for the air around us and burns them off at 550 degrees C. This means that 'black smoke' is eliminated completely. And because the filter is constantly burning the particulates it is self-cleaning and requires no maintenance.

### › ANTI-LOCK BRAKING SYSTEM (ABS)

Computer-controlled braking assistance designed to prevent the wheels from locking under extreme braking. This enables the vehicle to continue being steered and therefore controlled during this braking incident.

### › ELECTRONIC BRAKEFORCE DISTRIBUTION (EBD)

A conventional ABS system cannot account for any of the four wheels wanting to lock more quickly than the others (for example, two of the wheels may be on snow and two on tarmac). EBD reads the deceleration rate of each wheel individually and applies the ABS principles accordingly.

### › EMERGENCY BRAKING ASSISTANCE (EBA)

As drivers we find it difficult to instinctively brake very hard, but this is often what is needed in those rare emergency situations. The EBA system recognises our 'attempt' to brake hard and in combination with the ABS and EBD systems instantly applies the maximum stopping power possible.

### › ISOFIX

A standardised and more simple method for installing child seats, each seat is 'clicked' into place via a three point system. On the Citroën Berlingo Multispace, Isofix is installed on the two outer rear seats.

### › ELECTRONIC STABILITY PROGRAMME (ESP)

This is computer-controlled traction assistance and is provided primarily through the braking systems. The ESP's control unit constantly compares where the driver intends going (through the position of the steering wheel) with where the vehicle is actually going and, if necessary, makes speed corrections to each wheel individually through braking or engine torque to keep the vehicle 'in line'.

### › ON-BOARD TRIP COMPUTER

Citroën Berlingo Multispace's multi-function on-board trip computer provides you with information at your fingertips. At the touch of a button you can view a range of data like fuel consumption, average speed and mileage possible at your current fuel level.

### › CONNECTING BOX

Integrated Bluetooth® hands-free phone function with dashboard-integrated USB socket and jack to plug in a portable MP3 player. Menu navigation and music selection via steering-mounted and dashboard radio controls, with song titles displayed on the radio screen.

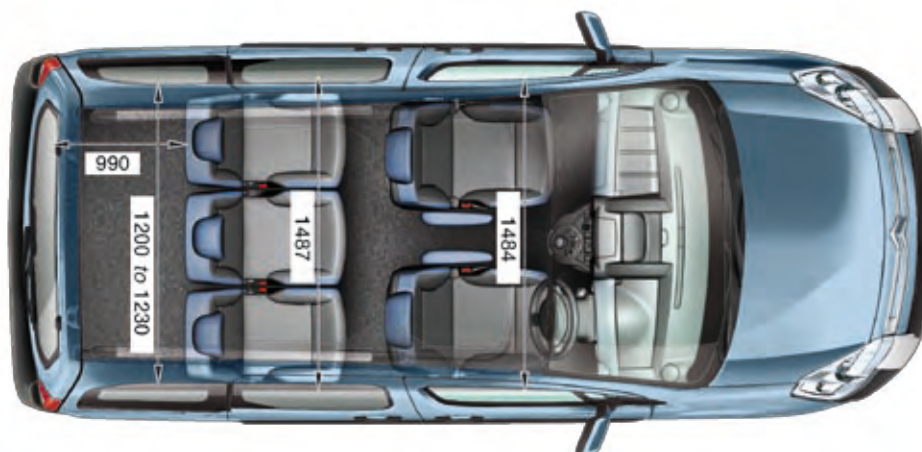
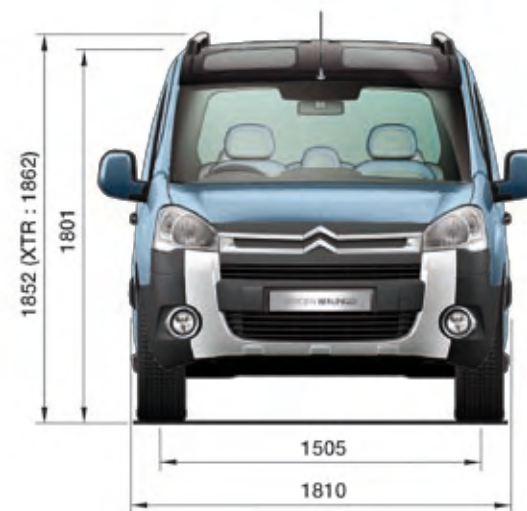
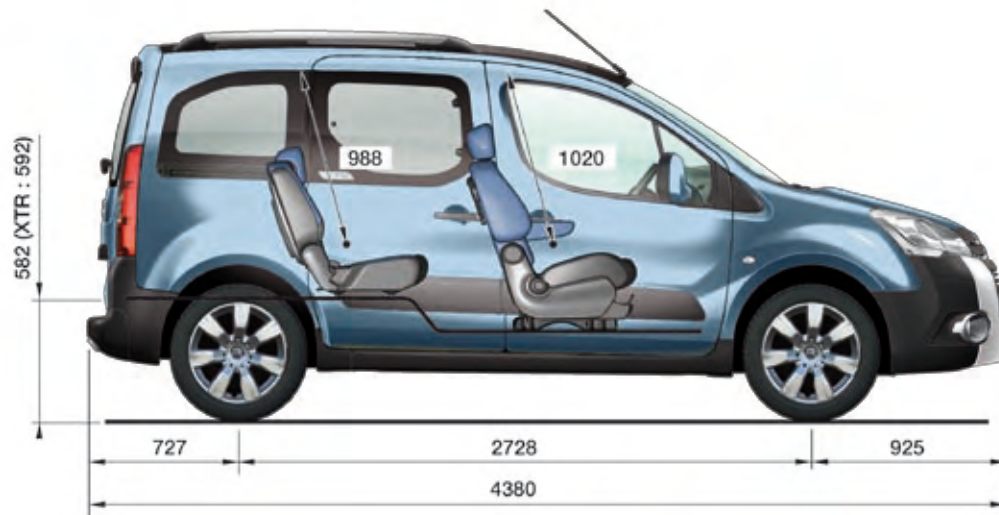
### › MYWAY COLOUR SATELLITE NAVIGATION

MyWay is completely integrated into the vehicle which avoids the risk of theft. The design has been created for ease of use and with steering wheel controls, navigating from your phone to the satellite navigation couldn't be any easier. MyWay allows you to define routes, stops and places of interest with the added benefit of vocal instruction. MyWay also provides live traffic updates of any congestion spots or delays. A GPS integrated aerial is built into the vehicle, to maximise the reception of satellite information; therefore permitting an accurate location of the car.

### › GRIP CONTROL ELECTRONIC STABILITY PROGRAMME (ESP)

Grip Control Electronic Stability Programme (ESP) is a traction control system which improves vehicle traction in specific driving conditions such as snow, mud and sand, via a dashboard-mounted dial with 5 different modes: standard ESP, Snow, All Road, Sand and ESP Off. The system adapts its functionality according to the mode selected by the driver. The Grip Control Electronic Stability Programme (ESP) with traction control and Hill Start Assist function includes Michelin Latitude Tour HP 'Mud and Snow' tyres (205/65 R15), whose suitability for all-terrain use optimises traction on a multitude of surfaces.

# CITROËN BERLINGO MULTISPACE DIMENSIONS



All measurements are in millimetres.





This brochure is made from paper from a well-managed forest. Citroën support responsible use of forest resources.

Please don't throw me away, give me to a friend or recycle me.

NOTE: Every endeavour has been made to ensure that the information and details contained in this brochure were accurate at the time of going to press March 2010. However the company reserves the right, whilst preserving the essential characteristics of the models described, to introduce at any time modifications, changes of details, equipment or accessories. Every effort will be made to bring this brochure up to date, but in order to avoid any misunderstandings please consult your Dealer. For full details of Citroën Care for Car and Driver, please see the full manufacturer's price list. The Citroën Website contains full information on all Citroën products and offers available in the UK, together with details of our environmental and recycling policies. The site address is: [www.citroen.co.uk](http://www.citroen.co.uk) or you can contact Citroën directly via [cuk\\_contactcentre@citroen.com](mailto:cuk_contactcentre@citroen.com)

**CITROËN prefers TOTAL**

CITROËN UK Ltd. 221 Bath Road, Slough SL1 4BA.  
[www.citroen.co.uk](http://www.citroen.co.uk)

CRÉATIVE TECHNOLOGIE

