

Ford Transit Connect Van

Feel the difference



If the tiling on the opposite page makes you feel a little uneasy, then we speak the same language.

Just like us, you believe in doing a professional job. Just like us, it's a matter of pride.

That's why all our commercial vehicles – and the service that stands behind them – are designed to help make your business run like clockwork.

It's simply a matter of one professional dealing with another. You wouldn't expect anything less from us.

Model: Transit Connect SWB Trend Van



Professional workmate

Tough design and a no-nonsense attitude. A civilised cabin environment with a host of car-like features. The choice of short or long wheelbase options. And an appetite for hard work. That's the unbeatable Ford Transit Connect Van.



Model: Transit Connect LWB Trend Van
Options: Alloy wheels

Built to work

The award-winning Ford Transit Connect Van is designed, engineered and constructed to the same uncompromising standards as the larger Ford Transit range. The result is standards of durability, functionality and strength that are unparalleled in Europe's small-van sector. However, never content to sit still, we have refreshed the interior and exterior, and the Euro Stage IV emissions compliant Duratorq TDCi diesel engines provide a refined and dependable ride.





1.8 Duratorq TDCi
Powerful diesel engine delivers up to 110 PS and 280 Nm of torque.



Short and Long Wheelbase

With short and long wheelbase options, a large functional load box, and up to 4.3 cubic metres of versatile loadspace with the passenger seat folded, the Ford Transit Connect Van will keep your business on the move.

The Ford Transit Connect Van sets the standards in its class, engineered to provide a level of rugged durability never before seen in the compact commercial vehicle market.

Powerful partner

SWB Van

- 2467 mm maximum load length
- 843 kg gross payload (T220), 648 kg (T200)
- 3.40 cu.m loadspace (passenger seat folded)
- Space for two Europallets*
- Room to stow a 2.4 m pipe with the passenger seat folded
- Turning circle 11.0 m (kerb to kerb)

LWB Van

- 2714 mm maximum load length
- 902 kg gross payload (T230)
- 4.3 cu.m loadspace (passenger seat folded)
- Space for 2.4 m x 1.2 m building boards when loaded diagonally
- Room to stow a 3 m pipe diagonally with the passenger seat folded
- Turning circle 11.9 m (kerb to kerb)

SWB Crew Van

- 733 kg gross payload
- Second row folding seats
- 1.4 cu.m loadspace (second row seats upright)
- 909 mm load length (second row seat to rear)

LWB Crew Van

- 772kg gross payload
- Second row folding seats
- 2.1 cu.m loadspace (second row seats upright)
- 1172 mm load length (second row seat to rear)



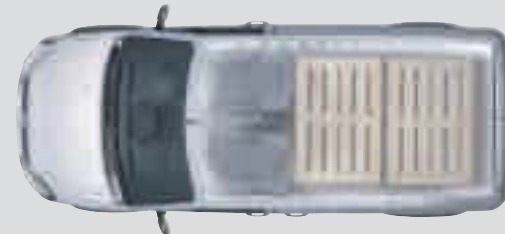
*Without bulkhead fitted.



SWB Trend van.



LWB Trend van.



SWB Trend crew van.



LWB Trend crew van.

Built and tested to Medium Commercial Vehicle standards, the Ford Transit Connect Van delivers outstanding strength and durability. The extensive use of thick, high-strength steel, a reinforced body shell with partial double-skin sides and twin side cross-members, plus a tough boron steel front cross-member all contribute to its outstanding low cost of ownership and useful vehicle life.

Handling

The independent MacPherson strut front suspension combines with multi-leaf rear springs (single leaf springs on SWB 648 kg models) to endow the Ford Transit Connect Van with superior handling and roadholding, even when fully loaded. Accurate and responsive rack and pinion, power-assisted steering is fitted as standard and gives the SWB model a turning circle of just 11.0 metres kerb to kerb.

Engines

The Ford Transit Connect Van is powered by a range of refined and dependable 1.8-litre Duratorq TDCi common rail diesel engines. Designed and engineered to deliver the optimum blend of efficient power and economy. All engines comply with Euro Stage IV emissions legislation and a maintenance-free coated diesel particulate filter (cDPF) is available as an option on the 90PS and 110PS engines.



Diesel (FWD)

1.8 Duratorq TDCi available in three power and torque configurations:

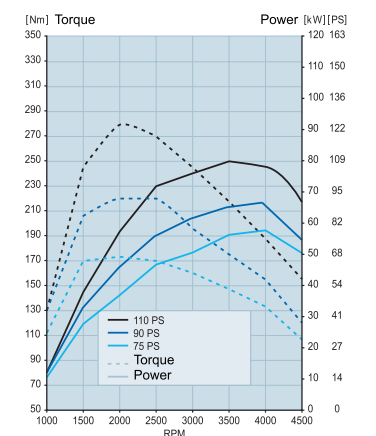
- 75 PS/175 Nm
- 90 PS/220 Nm
- 110 PS/280 Nm

Transmission

- 5-speed manual transmission

Brakes and wheels

All models are fitted with 15-inch, five-stud wheels (with reinforced tyres on selected versions) for greater load-carrying capacity. Large front and rear disc brakes, combined with standard ABS, help to extend service life and deliver outstanding stopping performance. New to the Ford Transit Connect is an Electronic Stability Program (ESP), which is standard on all vans.



Built-in fixings

Allow the installation of racking systems without further drilling.



Every day the Ford Transit Connect Van proves it has what it takes to get the job done. With a generous load box and outstanding access, thanks to its wide-opening rear doors and available twin sliding side load doors, the Ford Transit Connect Van will handle almost any task you throw its way.

Functional space

Whether you are carrying goods, work materials or tools, the Ford Transit Connect Van provides all the loadspace you will need.

Upright body sides help to make the most efficient use of the loadspace, particularly when racking is used.

Minimal rear wheel arch intrusion translates into a huge 1226 mm of clear load-floor width – enough to carry two Europallets in the short wheelbase version, or a stack of 2.4 m x 1.2 m building boards* in the LWB version.

*When stored diagonally

Standard features include:

- 1226 mm minimum width between rear wheel arches
- Flat side panels, ideal for signwriting
- Pre-threaded reinforced fixing points allow easy installation of universal racking systems or shelving without the need to drill holes into the vehicle
- Six DIN compliant floor tie-down eyes allow loads to be securely fixed
- Fold-flat front passenger seat provides a level cargo area for longer items, and doubles up as a handy work surface or table
- Full height folding mesh bulkhead
- Load floor liner

Optional features include:

- Range of bulkhead options
- Purpose-designed roof rack
- Roof rack crossbars
- Ladder holder and rollers
- 250° rear cargo doors for wide-open access
- Rear tailgate (SWB only)
- Attitude/ride height pack (high payload vans, not T200 models)

Half-height, full-width steel bulkhead
(Option).



Folding DIN compliant mesh bulkhead
Allows longer items to be carried and protects the driver against shifting loads (Standard).



Sliding side load doors
None, one or two side load doors available. Unglazed, glazed or with privacy glass (Option).



DIN compliant tie-down eyes
(Standard).



Underseat stowage tray
Keeps items out of sight beneath the front passenger's seat (Option, not available with standard fold flat passenger's seat).



Tailgate
Unglazed or glazed. Privacy glass, heated window and wash/wipe also available (Option).





Door mirrors
Large door mirrors, with blind-spot eliminators, fold flat to avoid accidental damage when parked.

The Ford Transit Connect Van is engineered to the highest possible levels of strength and durability for your peace of mind.

Safety and security

The Ford Transit Connect Van has been designed to offer outstanding vehicle and occupant safety. Advanced computer modelling led to the development of a body structure that combines energy-absorbing crumple zones with a rigid shell for maximum occupant protection.

High-strength steel beams inside the front doors help to prevent intrusion in a side impact, while behind the front bumper is a boron steel cross-member that is designed to absorb and safely channel crash energy away from the occupants.

Security is paramount in a commercial vehicle. So the Ford Transit Connect Van incorporates a combination of state-of-the-art features to make it highly secure.

Standard safety features include:

- Driver's airbag
- Height-adjustable inertia reel seat belts with grabbers and driver's seat belt pre-tensioner
- Anti-submarining ramps in front seat bases
- Anti-lock brakes with electronic brake-force distribution
- Electronic Stability Programme (ESP)
- Hazard Warning Lights: the turn indicators flash under heavy braking as a warning to following drivers
- Height-adjustable head restraints

Optional safety features:

- Passenger's airbag* (includes passenger airbag deactivation switch)
- Side airbags* (not available with fold-flat passenger's seat)

Standard security features:

- Ford's Safeguard Passive Anti-Theft System (PATS) engine immobiliser
- High-security shielded locks with strengthened mountings
- Unique lock-in-latch door lock system eliminates cables and rods between the lock and the latch
- Central/double locking
- Remote keyless entry with rolling codes
- Key-operated bonnet release
- Locking fuel cap
- Visible Vehicle Identification Number (VIN)

Optional security features:

- Perimeter alarm with volume sensing
- Choice of bulkheads

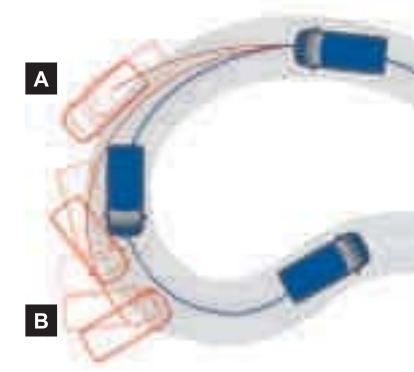
*Note: A rear-facing child seat should never be placed in the front passenger seat when the Ford vehicle is equipped with an operational front passenger's airbag.

Occupant safety

Single-stage driver's airbag is fitted as standard.



The Ford Transit Connect Van now comes with standard Electronic Stability Programme (ESP).



- Vehicle with ESP.
- Vehicle without ESP.
- A** Vehicle experiences understeer on approach.
- B** Vehicle experiences oversteer on exit of bend.

Lockable bonnet

Lockable bonnet can only be released using the vehicle key. The mechanism is fully shrouded to resist tampering (Standard).



Full-height steel bulkhead

Full-height steel bulkhead provides added security. Also offered with glazed top panel, as shown (Option).



Hazard Warning Lights

Turn indicators automatically flash under heavy braking as a warning to following drivers (Standard).



Transit Connect Van

Model shown is finished in Frozen White and features the optional visibility pack

Built on a dedicated commercial vehicle platform, the hard-working and established Ford Transit Connect Van brings you all that is great about the range: robust construction; flexible loadspace; and a comfortable, car-like driving environment.



Exterior features include:

- 6x15" steel wheels with hub covers
- Torque Grey bumpers
- Tinted glass
- Manually-operated mirrors
- Electrically-operated windows
- Remote central locking
- Passenger-side sliding side load door
- Electronic Stability Programme (ESP)
- Hill Launch Assist (HLA)
- Hinged, unglazed rear cargo doors
- Home Safe headlights

Interior features include:

- New facia design
- Model 6000 RDS EON AM/FM stereo radio/CD with steering column-mounted remote audio controls, AUX-in and 'Keycode' anti-theft coding
- Steering column adjustable for rake/reach
- Fold-flat passenger seat
- Folding mesh bulkhead
- Front seat-back storage pockets
- Trip computer
- Centre storage
- 12-volt front power socket
- 6 DIN-compliant floor tie-down eyes



Remote audio controls

Fingertip control of main audio functions (Standard).



Load floor mat

Protects both your van and its load (standard).



Remote central/double locking

Convenient and secure (Standard).



Home Safe headlights

Remain illuminated for a short while once you're parked to guide you to your door (Standard).



Unglazed cargo doors

For added security (Standard).



Electrically-operated windows

(Standard).



Transit Connect Trend Van

Model shown is finished in Avalon metallic paint (Option), glazed full height steel bulkhead (Option).

Note The Bluetooth® word mark and logos are owned by the Bluetooth SIG, Inc. and any use of such marks by Ford Motor Company Limited and its associated companies is under licence. Other trademarks and trade names are those of their respective owners.

Note It is an offence for drivers to use a hand-held mobile phone or similar device while driving.

The Ford Transit Connect Trend Van might be a new driving experience, but as soon as you get in, everything feels familiar. The well-equipped cabin acquires itself impeccably, because the more comfortable you are, the more productive you will be.

Exterior features additional to Transit Connect Van

- Body colour bumpers
- Front fog lights
- 6x15" steel wheels with full Trend wheel covers
- Premium Visibility Pack, including Quickclear heated windscreen, rain sensing wipers, auto headlights, heated washer jets and electrically-operated and heated door mirrors

Interior features additional to Transit Connect Van

- Brilliant Blue seat trim and instrument panel available as an option
- Bluetooth® with Voice Control System with second 12-volt power socket
- 6-way driver's seat with armrest and lumbar support
- Silver finish gearshift knob and radio/CD facia
- Aluminium steering wheel spoke shells
- Overhead full width stowage shelf
- Map reading light



Bluetooth® wireless technology

Wireless mobile phone connection with voice recognition control for audio, phone and climate control (Standard).



Interior design

Trend Van features aluminium trim accents (Standard).



6-way adjustable driver's seat with armrest and lumbar support

(Standard).



Trip computer

Displays information including fuel economy, distance travelled, ambient temperature as well as controlling parts of the van's functionality (Standard).



Front fog lights

Enhanced visibility in poor driving conditions (Standard).



Heated door mirrors

Part of Premium Visibility Pack (Standard).



Transit Connect Limited Van

Model shown is finished in Avalon metallic paint (Option) and glazed full height steel bulkhead (Option)

*Note: A rear-facing child seat should never be placed in the front passenger seat when the Ford vehicle is equipped with an operational front passenger's airbag.

With outstanding levels of comfort, convenience and functionality, the Ford Transit Connect Limited Van has it all. Great to drive, great to spend time in, it's not only a determined work partner but, with its roomy air conditioned cab, it serves as the ideal mobile office too.



Exterior features additional to Trend Van

- 7 spoke 15" alloy wheels
- 1.8 Duratorq TDCi (110 PS) diesel engine
- Silver front grille
- Body colour door handles
- Rear parking sensors

Interior features additional to Trend Van

- Auto-dimming rear-view mirror (only with glazed rear doors)
- Reading light
- Air conditioning
- Silver gear shift surround
- Leather steering wheel



Alloy wheels

Fabulous 15" 7-spoke alloy wheels with 195/65 tyres (Standard).



Air conditioning

With air recirculation feature. (Standard)



Side airbags*

Enhanced protection in a side impact (Option: Not available with fold-flat seat).



Silver front grille

(Standard).



Rear parking sensors

Makes parking easier. Switches on automatically when reverse gear is selected (Standard).



Rain-sensing wipers and automatic headlights

Part of the Premium Visibility Pack (Standard).





When your vehicle is an integral part of your business, it's important you have the freedom to tailor its specification exactly to your needs. So, every item within our extensive range of options and accessories has been specially developed to help enhance your efficiency and image.

Accessories

Thule load stop and lockable ladder holder

Flexible load securing systems for the safe transportation of ladders, timber and pipes etc.

Steel cage roof carrier

Sturdy steel cage roof carrier adds a new dimension to transporting materials and equipment (Accessory).

Base roof carrier

Roof carrier is the base for all roof transportation attachments (Accessory – not illustrated).

Rear window protection grille

Steel grilles offer added security for vans with glazed rear cargo doors (Accessory).



Note The Bluetooth® word mark and logos are owned by the Bluetooth SIG, Inc. and any use of such marks by Ford Motor Company Limited and its associated companies is under licence. Other trademarks and trade names are those of their respective owners.

17" alloy wheels

17" 9x2-spoke classic design alloy wheels and 205/50 R17 tyres (Accessory).



Edström racking system

Tailor-made racking solution with various drawers and boxes included. Mounted to wall and floor without using original lashing hooks. (Accessory)



Dometic cooling fridge

Efficient, tailor-made cooling box uses 12-volt onboard system with integrated gel battery or, when parked, 230-volt mains supply. Maintains constant temperature of around 2°C at ambient temperature of 30°C. Total gross volume approximately 900 litres. Certified by ATP for food transport within Europe (Accessory – requires optional Dual Side Load Doors).

A range of exterior styling accessories

Front and rear bumper styling parts*

In contrasting silver. (Accessory)

Bonnet and bumper GT stripes*

Accessory.

Mirror caps

In contrasting silver. (Accessory)

18" alloy wheels

5-spoke design alloy wheels and 225/40 R18 tyres (Accessory).



Side skirts*

Accessory.

Body colour rear roof spoiler*

Accessory.

Exhaust trim*

Twin square exhaust tailpipes with bright finish (Accessory).

*Supplied by MS Design. Please note that all supplier-branded accessories are provided with a supplier's warranty and are subject to the supplier's warranty terms. Such accessories are, therefore, excluded from the Ford warranty.



Waeco rear-view camera

5" LCD colour screen provides clear visibility during the day and night. Automatically activates when reverse gear is selected and can be manually switched off (Accessory).



Mobile navigation

Leave your maps behind with a simple and intuitive mobile GPS navigation system. Please contact your Ford Dealer for details (Accessory).



Parrot car kits

Your Ford Dealer can supply and install various Parrot car kits. These Bluetooth® hands-free kits are connected to the original audio system. Example shown is a Parrot CK3200 LS-Colour with TFT screen. It displays your mobile phone information and the callers' photos. Built-in voice recognition and automatic phonebook synchronisation. (Accessory)



We are all beginning to understand the impact that mobility is having on climate change. While we can't change things overnight, we are working very hard to find solutions.

Making a difference now

Our latest range of engines complies with Euro Stage IV regulations. Duratorq TDCi diesel engines now develop more torque whilst delivering lower emissions. On Transit models, our Duratec 2.3L engine can be converted to run on liquefied petroleum gas (LPG) or compressed natural gas (CNG).

In the Ford car range, our optional Flexifuel engine is achieving emission reductions of around 30% to 80%** compared to conventional petrol engines.

Protecting the future

Using our Product Sustainability Index, a design for sustainability management tool, we are addressing the environmental, social and economic impacts of our vehicles from the earliest stages of their development*.

We are working on a wide range of vehicle technologies from biofuels to hybrids and clean diesels, and in the long term to hydrogen fuel-cell technology with the potential for near zero CO₂ emissions.

Improving our manufacturing facilities

We are constantly working to minimise the impact of our facilities on the environment. This includes pioneering on-site generation of electricity from sun and wind, implementing leading-edge manufacturing processes and full certification to the international standard for Environmental Management Systems; ISO 14001. This has led to improved environmental performance through savings in energy, water, material and waste-handling requirements.

Recycling for good

In the interests of sustainability, many of our components contain recycled and renewable content. All Ford vehicles are at least 85% recyclable and 95% recoverable in accordance with ISO 22628. We offer free take-back for qualifying vehicles at the end of their lives. All our take-back points are fully licensed and must also meet additional Ford quality standards for the professional receipt, treatment and recovery of end-of-life vehicles.

This brochure has been produced on paper based on fibres from sustainable forestry, using a 100% chlorine-free (TCF) bleaching process.

*For more about this topic, see <http://www.ford.com/en/company/about/sustainability/2006-07/downloads.htm>

**Dependent on feedstock used and production process. (Source: EUCAR CONCAWE study.) Ford supports the sustainable production of biofuels.

Our range of finance, insurance, service and assistance options is designed with just one thing in mind – making life easy for you.

Ford Credit

Your Ford Transit Specialist Dealer can offer simple, plain language advice on the various ways of financing your purchase. They can help you complete an application and get a decision, usually within 15 minutes. For further details, visit www.ford.co.uk or contact your Ford Transit Specialist Dealer.

Ford Acquire is a straightforward way to own your vehicle. Simply put down a deposit, pay the remainder, plus interest, over an agreed period and the vehicle becomes yours.

Ford Business Partner Contract Hire* provides an affordable, convenient and flexible way to finance your business vehicle.

Ford Insure* is our comprehensive motor insurance product, designed specifically for Ford drivers.

Finance subject to status. **Business Users only.** Guarantees/Indemnities may be required. Freepost Ford Credit.

*Business Partner Contract Hire is provided by Lex Vehicle Leasing Limited, trading as Ford Business Partner, Heathside Park, Heathside Park Road, Stockport SK3 0RB.

*Ford Insure is underwritten and administered by Royal & Sun Alliance Insurance plc (No. 93792), Registered in England and Wales at St. Mark's Court, Chart Way, Horsham, West Sussex, RH12 1XL. Authorised and regulated by the Financial Services Authority. For your protection, telephone calls may be recorded and monitored.

Services

There are 222 Sales and 245 Aftersales Ford Transit Specialist Dealers across the UK, equipped and trained to meet Commercial Vehicle customer requirements. From these, 113 Sales and 95 Aftersales Dealers have achieved the 'Backbone standard' as recognition of their total commitment to delivering dedicated and professional sales and service support.

To find the location of your nearest Ford Transit Specialist Dealer, simply call the Ford Information Service on **0845 7111 888**, or visit the Ford Dealer locator at **www.fordvans.co.uk**

Ford Protect Every new Ford Fiesta Van is protected by a 3-year/60,000-mile Ford Protect Classic Warranty Plan, and also comes with a 1-year Ford Assistance package.

Ford Ranger is protected by a 3-year/60,000 mile Ford Protect Classic Warranty Plan

Ford Transit and Transit Connects are protected by a 3-year/100,000-mile bumper-to-bumper warranty.

Ford Transit Chassis Cab One-Stop bodywork is covered by a 3-year/100,000-mile warranty and a 3-year Perforation Warranty provided by the bodywork supplier.

Ford Perforation Warranty Every new Ford Fiesta Van, Transit and Transit Connect is covered by the Ford Perforation Warranty for 8 years* from the date of first registration. Ranger is covered for 6 years from the date of first registration.

Ford Assistance Ford Transits, Transit Connects and Rangers are supplied with a minimum of a 1-year Ford Assistance roadside package. Further details are available either on www.ford.co.uk or from your local Ford Dealer.

Ford Rapid Fit Our 'no appointments necessary, while-you-wait' fast-fit service for exhausts, brakes, batteries and more, at over 240 sites nationally.

Ford Accident Repair Centres Approved Ford Accident Repair Centres meet rigorous Ford standards and are the best place to return your vehicle to its pre-accident condition.

Contacts

Ford Customer Relationship Centre In the unlikely event that your Ford Dealer can't help you or if you need to speak to us directly, call 0845 841 1111 at local rates.

Ford Rental - local service nationwide Car and van rental from our latest model range. Contact your local Ford Dealer for more information.

Talkback - the company car drivers' club This is your club for extended test drives, special events, and advice on tax and buying issues. Join free, even if you don't drive a Ford, on www.talkbackclub.com or call 0845 605 55 66.

Ford Mobility Our MAGIC care centre provides free information on all motoring and mobility issues, including special offers for HRDLA and Motability recipients. Call free on 0800 240 241.

*Subject to terms and conditions.

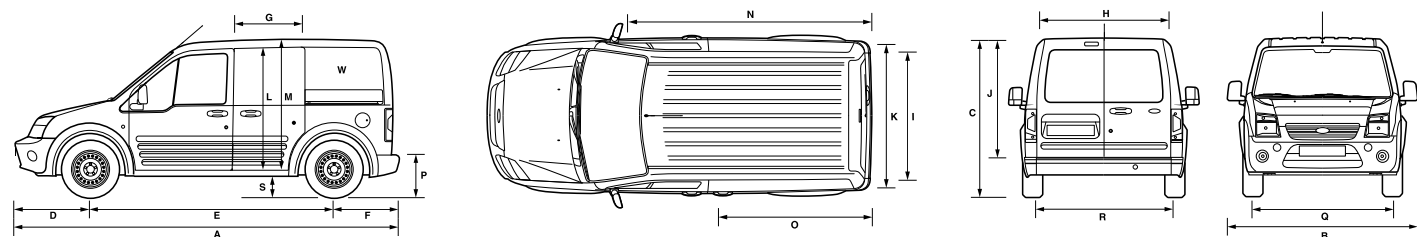


Programme for the Endorsement of Forest Certification schemes

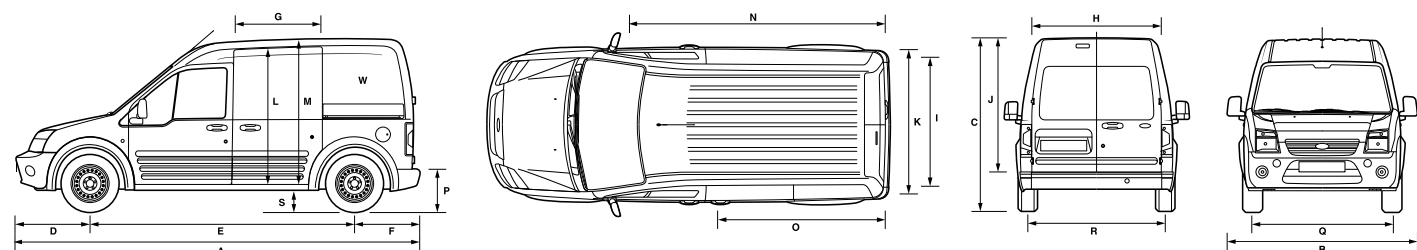
This brochure is printed on PEFC certified paper promoting sustainable forest management.

PRINTERS CODE 5pt

Ford Transit Connect Van SWB Low Roof



Ford Transit Connect Van LWB High Roof



Dimensions (mm)

	Transit Connect SWB		Transit Connect LWB	
	Low Roof Van	Low Roof SWB Crew Van	High Roof Van	High Roof LWB Crew Van
A Overall length	4275	4275	4525	4525
B Overall width without mirrors	1795	1795	1795	1795
B Overall width with mirrors	2044	2044	2044	2044
C Overall height (laden/unladen)	1739/1815	1739/1815	1906/1980	1906/1980
D Front overhang	861	861	861	861
E Wheelbase	2664	2664	2912	2912
F Rear overhang	749	749	749	749
G Side door entry width	606	606	809	809
H Rear door opening width below belt	1293	1293	1293	1293
I Load width between wheel arches	1226	1226	1226	1226
J Rear door opening height	1145	1145	1316	1313
K Load width	1490	1490	1490	1490
L Side door opening height	1040	1040	1181	1181
M Load floor to roof	1193	1193	1364	1364
N Load length (max) (passenger's seat folded)	2467	–	2714	–
O1 Load length (laden to belt line)	1583	–	1830	–
O2 Load length (back of front seat)	1739	–	1986	–
O3 Load length (passenger's fold flat seat up)	1760	–	2007	–
O4 Load length (2nd row seat to rear)	–	909	–	1172
O4 Load length (2nd row seat folded)	–	1266	–	1529
P Loading height (laden/unladen)	496/598	496/598	496/601	496/601
Q Front track	1505	1505	1505	1505
R Rear track	1552	1552	1552	1552
S Ground clearance	166	166	166	166
W1 Cargo volume	2.8 (cu.m)	–	3.7 (cu.m)	–
W2 Cargo volume (front passenger seat folded)	3.4 (cu.m)	–	4.3 (cu.m)	–
W3 Cargo volume (2nd row seat up)	–	1.4 (cu.m)	–	2.1 (cu.m)
W4 Cargo volume (2nd row seat folded)	–	2.6 (cu.m)	–	3.4 (cu.m)
Additional information				
Interior – Front				
Effective headroom	1147	1147	1304	1304
Maximum effective legroom	1008	1008	1008	1008
Shoulder room	1382	1382	1382	1382
Hip room	1284	1284	1284	1284
Interior – Rear (Crew Van only)				
Effective headroom	–	1099	–	1099
Maximum effective legroom	–	979	–	979
Shoulder room	–	1536	–	1536
Hip room	–	1553	–	1553
Load length (2nd row seat to rear)	–	909	–	1172

Key: All dimensions (shown in mm) are subject to manufacturing tolerances and refer to minimum specification models and do not include additional equipment. These illustrations are for guidance only. Dimensions may vary dependent on the model and equipment fitted.

Weights and loads

	Gross payload ^o	Gross vehicle mass (kg)	Kerb mass (kg)*	Front axle kerb mass (kg)	Rear axle kerb mass (kg)	Axle ratio	Max. GTM (kg) with quoted axle ratio
T200 SWB Low Roof Van (inc Trend and Limited)							
1.8 Duratorq TDCi Diesel 75 PS	648	2040	1392	832	560	4.06	2840
1.8 Duratorq TDCi Diesel 90 PS**	641	2040	1399	839	560	4.06	2840
1.8 Duratorq TDCi Diesel 110 PS**	638	2040	1402	845	557	3.80	2840
T220 SWB Low Roof Van (inc Trend)							
1.8 Duratorq TDCi Diesel 75 PS	843	2240	1397	833	564	4.06	3040
1.8 Duratorq TDCi Diesel 90 PS**	836	2240	1404	840	564	4.06	3040
1.8 Duratorq TDCi Diesel 110 PS**	833	2240	1407	846	561	3.80	3040
T220 SWB Low Roof Crew Van (inc Trend)							
1.8 Duratorq TDCi Diesel 75 PS	733	2240	1507	885	622	4.06	3040
1.8 Duratorq TDCi Diesel 90 PS**	727	2240	1513	892	621	4.06	3040
1.8 Duratorq TDCi Diesel 110 PS**	723	2240	1517	898	619	3.80	3040
T230 LWB High Roof Van (inc Trend and Limited)							
1.8 Duratorq TDCi Diesel 90 PS**	902	2340	1438	854	584	4.06	3140
1.8 Duratorq TDCi Diesel 110PS**	898	2340	1442	860	582	3.80	3140
T230 LWB High Roof Crew Van (inc Trend)							
1.8 Duratorq TDCi Diesel 90 PS**	772	2340	1568	896	672	4.06	3140
1.8 Duratorq TDCi Diesel 110 PS**	767	2340	1573	903	670	3.80	3140

Maximum gradeability – 12% at full GTM; 20% at full GVM. ^oGross payload = Gross vehicle mass, less kerb mass. Represents the lightest kerbweight assuming full fluid levels and 90% fuel levels, subject to manufacturing tolerances and options, etc., fitted. All kerb masses quoted in this brochure are subject to manufacturing tolerances and are for Base models with minimum equipment. Trend, Limited and Sport models will have greater kerb masses and, therefore, lower payloads due to the increased amount of standard equipment. Any additional options specified on the vehicle will reduce the payload accordingly. **The 90 PS and 110 PS engines are also available with an optional cDPF (coated Diesel Particulate Filter).

Model availability

	SWB Van			LWB Van		
	Trend	Limited	Trend	Limited	Trend	Limited
Transit Connect						
1.8 Duratorq TDCi Diesel 75 PS	●					
1.8 Duratorq TDCi Diesel 90 PS**	●	●		●	●	
1.8 Duratorq TDCi Diesel 110 PS**	●	●	●	●	●	●
Transit Connect Crew Van						
1.8 Duratorq TDCi Diesel 75 PS	●					
1.8 Duratorq TDCi Diesel 90 PS**	●	●		●	●	
1.8 Duratorq TDCi Diesel 110 PS**	●	●		●	●	

● = Standard. **Note:** All Transit Connect engines are Stage IV emissions level. **The 90 PS and 110 PS engines are also available with an optional cDPF (coated Diesel Particulate Filter).

Engine data

	Engine technical features	Maximum power ^o	Maximum torque ^o	cDPF Option
1.8 Duratorq TDCi Diesel 55 kW (75 PS) 1753 cc	4 cylinders in line; SOHC; 8 valves; direct injection with high-pressure, common-rail, multipoint fuel injection system; fixed geometry turbocharger with intercooler; electronic throttle	55 kW (75 PS) at 4000 min ⁻¹ (rpm)	175 Nm at 1800 min ⁻¹ (rpm)	No
1.8 Duratorq TDCi Diesel 66 kW (90 PS) 1753 cc	4 cylinders in line; SOHC; 8 valves; direct injection with high-pressure, common-rail, multipoint fuel injection system; fixed geometry turbocharger with intercooler and transient torque overboost function; electronic throttle	66 kW (90 PS) at 4000 min ⁻¹ (rpm)	220/240* Nm at 1750 min ⁻¹ (rpm)	Yes
1.8 Duratorq TDCi Diesel 81 kW (110 PS) 1753 cc	4 cylinders in line; SOHC; 8 valves; direct injection with high-pressure, common-rail, multipoint fuel injection system; variable nozzle turbocharger with intercooler and transient torque overboost function; electronic throttle	81 kW (110 PS) at 3500 min ⁻¹ (rpm)	250/280* Nm at 150h 3200 min ⁻¹ (rpm)	Yes

^oTested in accordance with ISO 1585. *With transient overboost.

Mechanical features

	SWB Van			LWB Van		
	Trend	Limited	Trend	Limited	Trend	Limited
Brakes						
Diagonally-split, with dual-line servo-assistance. Front discs, rear discs	●	●	●	●	●	●
Engine						
cDPF (coated Diesel Particulate Filter) (90 PS and 110 PS engines only)	○	○	○	○	○	○
Fuel tank						
Capacity – 60 litres	●	●	●	●	●	●
Steering						
Power-assisted	●	●	●	●	●	●
Suspension and body						
Front – Independent with MacPherson struts, variable rate coil springs, gas-pressurised shock absorbers, and anti-roll bar	●	●	●	●	●	●
Rear – Single leaf springs and gas pressurised shock absorbers (T200 models only, not available on Crew Van)	●	●	●			
Rear – Single leaf springs, gas-pressurised shock absorbers, and anti-roll bar	●	●	●	●	●	●
Towing eyes – Front and rear	●	●	●	●	●	●
Turning circle						
Kerb to kerb 11.0 m	●	●	●			
Kerb to kerb 11.9 m				●	●	●

● = Standard, ○ = Option, at extra cost.

Safety and security features

	SWB Van			LWB Van		
	Trend	Limited	Trend	Limited	Trend	Limited
Safety						
Anti-lock brakes (includes electronic brake-force distribution (EBD)) with rear disc brakes	●	●	●	●	●	●
Electronic Stability Programme (ESP)	●	●	●	●	●	●
Side impact door beams, front. Collapsible steering column. Energy absorbing crumple zones, front and rear	●	●	●	●	●	●
Airbag – Driver's	●	●	●	●	●	●
Airbag – Front passenger's* with de-activation switch	○	○	○	○	○	○
Airbags – Front side impact (not available with fold-flat passenger's seat, only available with passenger airbag)	○	○	○	○	○	○
Security						
Alarm – Perimeter with additional volume sensing	○	○	○	○	○	○
Fuel cap – Locking body colour flap	●	●	●	●	●	●
Immobiliser – Passive Anti-Theft System (PATS)	●	●	●	●	●	●
Locks – High security, lock-in-latch system, shielded with strengthened mountings	●	●	●	●	●	●
Locks – Remote keyless entry	●	●	●	●	●	●
Locks – Central, double locking	●	●	●	●	●	●
Locks – Key operated bonnet release	●	●	●	●	●	●
Vehicle Identification Number (VIN) – Visible	●	●	●	●	●	●

● = Standard, ○ = Option, at extra cost. ***Note: A rear-facing child seat should never be placed in the front passenger's seat when the Ford vehicle is equipped with a front passenger airbag.**

Wheel availability

	SWB			LWB		
	Van	Trend	Limited	Van	Trend	Limited
Wheels – 6x15" steel (full-size spare) and 195/65 R15 tyres	●			●		
Wheels – 6x15" steel with full Trend wheelcover (full-size spare) and 195/65 R15 tyres		●			●	
Wheels – 15" 7-spoke alloy wheels (full-size steel spare) and 195/65 R15 tyres	○	○	●	○	○	●

● = Standard, ○ = Option, at extra cost.

Exterior features

	SWB			LWB		
	Van	Trend	Limited	Van	Trend	Limited
Exterior appearance and styling						
Bodyside mouldings – One-piece, Torque Grey	●	●	●	●	●	●
Bumpers – Torque Grey	●			●		
Bumpers – Body colour, front and rear (Torque Grey when SVO paint is ordered)		●	●		●	●
Door handles – Body colour			●			●
Front Grille – Silver			●			●
Paint – Metallic	○	●	●	○	●	●
Wheel lip mouldings – Torque Grey	●	●	●	●	●	●
Exterior functional						
Door mirrors – Manual, flat folding, black housings	●			●		
Door mirrors – Enhanced rear vision	●	●	●	●	●	●
Door mirrors – Electrically-operated and heated, black housings	○	●	●	○	●	●
Doors – Tailgate, glazed	○	○	○			
Doors – Hinged rear doors, unglazed (option on Crew Van)	●	●	●	●	●	●
Doors – Hinged rear doors, glazed and heated (standard on Crew Van)	○	○	○	○	○	○
Doors – Passenger side sliding load door, unglazed	●	●	●	●	●	●
Doors – Passenger side sliding load door, glazed	○	○	○	○	○	○
Doors – No side sliding load door	○	○	○	○	○	○
Doors – Driver and passenger side sliding load doors, unglazed (standard on Crew Van)	○	○	○	○	○	○
Doors – Driver and passenger side sliding load doors, glazed	○	○	○	○	○	○
Parking distance sensor – Rear	○	○	●	○	○	●
Tinted glass – Front door windows and windscreen only	●	●	●	●	●	●
Tinted glass – Heavy tint privacy, all rear windows		○	○		○	○
Wheels – 6x15 Steel (full-size spare) and 195/65 R15 tyres	●			●		
Wheels – 6x15 Steel with full Trend wheel cover (full-size spare) and 195/65 R15 tyres		●			●	
Wheels – 15" 7-spoke alloy wheels (full-size steel spare) and 195/65 R15 tyres	○	○	●	○	○	●
Windscreen – Laminated	●	●	●	●	●	●
Windscreen – Quickclear heated (includes heated washer jets)	○	●	●	○	●	●
Visibility Pack – Quickclear heated windscreen and electrically-operated and heated door mirrors	○			○		
Premium Visibility Pack – Quickclear heated windscreen; electrically-operated and heated door mirrors; automatic headlights; automatic front wipers with rain sensor; instrument panel dimmer; front fog lights		●	●		●	●
Wipers – Front, 2-speed, with intermittent wipe and electric wash	●	●	●	●	●	●
Wipers – Rear, with fixed intermittent wipe and electric wash	○	○	○	○	○	○
Exterior lighting						
Halogen headlights, side lights, rear fog light, reversing light	●	●	●	●	●	●
Headlights – Home Safe	●	●	●	●	●	●
Clear side indicators	●	●	●	●	●	●
High-mounted rear brake light	●	●	●	●	●	●
Fog lights – Front		●	●		●	●

● = Standard, ○ = Option, at extra cost.

Interior features

	SWB			LWB		
	Van	Trend	Limited	Van	Trend	Limited
Audio						
New Island design stereo AM/FM radio/CD – Model 6000 RDS with 24 station pre-sets, 4x17 watts power output, enhanced 'Keycode' anti-theft coding, 2 speakers, AUX connection for external music devices and remote audio controls (silver finish on Trend and Limited)	●	●	●	●	●	●
Bluetooth® Hands-Free Phone and Voice Control System	○	●	●	○	●	●
CD/SD Navigation System with Radio/CD – 5" colour display, 2 speakers, remote audio controls, AUX connection for external music devices, SD memory card slot for data (e.g. music) exchange; Western Europe Navigation map data on SD card	○	○	○	○	○	○
Carpet and trim						
Cab floor covering – Rubber	●	●	●	●	●	●
Door trim – Moulded panel with pull handles and, on front doors only, door bins	●	●	●	●	●	●
Gear lever gaiter – Black	●	●	●	●	●	●
Gear shift – Chrome surround			●			●
Gear knob – Black with black insert	●			●		
Gear knob – Black with silver insert		●	●		●	●
Interior lighting						
Courtesy light – Header-mounted, front door-operated	●			●		
Map reading light in lieu of courtesy light		●	●		●	●
Load compartment light – One, roof mounted	●	●	●	●	●	●
Instruments and controls						
Control stalks – Column-mounted for master lights, indicators and wash/wipe functions	●	●	●	●	●	●
Illuminated heater controls – 4-speed fan. Five vents with temperature and direction control	●	●	●	●	●	●
Instruments – Speedometer, engine temperature, fuel level gauges, tachometer and trip recorder	●	●	●	●	●	●
Warning indicators for oil pressure, direction indicators, glow plugs, main beam, ignition/alternator, brake failure, handbrake on, airbag(s), low fuel level, 'lights on' audible warning, ABS, check engine	●	●	●	●	●	●
Trip computer	●	●	●	●	●	●
Steering wheel – Black	●			●		
Steering wheel – Black with aluminium spoke shells		●			●	
Steering wheel – Leather			●			●
Steering column – Rake/reach-adjustable	●	●	●	●	●	●
Seats and seat belts						
Front seat – Driver's 4-way manual adjustment	●			●		
Front seat – Driver's 6-way manual adjustment	○	●	●	○	●	●
Front seat – Driver's armrest and adjustable lumbar support	○	●	●	○	●	●
Front seat – Passenger's 4-way manual adjustment (includes underseat storage) (standard on Crew Van)	○	○	○	○	○	○
Front seat – Passenger's fold-flat seat for loadbox extension (not available on Crew Van)	●	●	●	●	●	●
Front seats – Anti-submarining, fully reclining with height-adjustable head restraints	●	●	●	●	●	●
Rear seats – Folding back (Crew Van only)	●	●		●	●	
Seat trim – Fabric	●	●	●	●	●	●
Seat trim – Prima grain vinyl (not available on Crew Van)	○			○		
Seat belts – Front, inertia reel, with grabbers, static buckle and roto-pretensioner (driver's seat only) and height-adjustable mounts	●	●	●	●	●	●
Seat belts – Rear, inertia reel lap and diagonal (Crew Van only)	●	●		●	●	
Comfort and convenience						
Accessory socket	●	●	●	●	●	●
Air conditioning – CFC-free with air recirculation	○	○	●	○	○	●
Centre console – Includes coin tray, pen holder and two cup holders	●	●	●	●	●	●
Clock – Digital	●	●	●	●	●	●
Glove box	●	●	●	●	●	●
Heater – Recirculation	●	●	●	●	●	●

Colour and trim

Interior features

	SWB Van			LWB Van		
	Trend	Limited		Trend	Limited	
Mirror – Dipping rear-view (not available with unglazed rear doors or full-height bulkhead)	●			●		
Mirror – Auto dimming rear-view (not available with unglazed rear doors or full-height bulkhead)		●	●		●	●
Storage – Centre fascia-mounted clipboard holder	●	●	●	●	●	●
Storage – Overhead full-width shelf	○	●	●	○	●	●
Storage – Under passenger's seat (standard with optional 4-way adjustable seat, not available with fold-flat seat)	○	○	○	○	○	○
Sunvisor – Driver's with ticket strap	●	●	●	●	●	●
Sunvisor – Passenger's	●	●	●	●	●	●
Windows – Front, electrically-operated with 'one touch' lowering on driver's side	●	●	●	●	●	●
Load compartment						
Bulkhead – Full width, full height mesh with folding facility (only available with fold flat passenger seat)	●	●	●	●	●	●
Bulkhead – Vertical 2-bar, steel	○	○	○	○	○	○
Bulkhead – Full width steel, half-height	○	○	○	○	○	○
Bulkhead – Full width steel, full-height	○	○	○	○	○	○
Bulkhead – Full width steel, full-height with window	○	○	○	○	○	○
Bulkhead – Moveable full width, full-height mesh (Crew Van only) (FCSD option)	○	○	○	○	○	○
Load liner – Floor	●	●	●	●	●	●
Storage – Rear door stowage bin and net (not available with tailgate)	●	●	●	●	●	●
Tie-down 'D' rings – Six, complying with DIN 75410 specification	●	●	●	●	●	●
Auxiliary power socket – Load compartment (not available with Crew Van)	○	○	○	○	○	○

● = Standard, ○ = Option, at extra cost, □ = Part of an option pack, at extra cost. The Bluetooth® word mark and logos are owned by the Bluetooth SIG, Inc. and any use of such marks by Ford Motor Company is under license. Other trademarks and trade names are those of their respective owners.

Special Vehicle Options

	SWB Van			LWB Van		
	Trend	Limited		Trend	Limited	
Positive Tyre Selection – Goodyear, Pirelli or Bridgestone	○	○	○	○	○	○
Mud and snow tyres	○	○	○	○	○	○
Attitude/Ride Height Pack (high-payload vans) (not available on T200 models or Crew Van)	○	○	○	○	○	○
250° Rear cargo doors (not available with Crew Van)	○	○	○	○	○	○
Slam locking (Not available on Crew Van)	○	○	○	○	○	○
Unglazed tailgate	○	○	○	○	○	○
SVO paint package	○	○	○	○	○	○

○ = Option, at extra cost.

Trim and body colour availability

Model	Seat insert/bolster trim and colour	IP/Environment colour	Solid body colours			Metallic body colours*								
			Frozen White	Colorado Red	Blazer Blue	Moondust Silver	Tango ¹	Chill	Sea Grey	Ocean Blue [†]	Avalon	Panther Black	Ink Blue ^{††}	Vision ^{††}
Connect	Lattice/Twill fabric in Dark Pewter	Dark Pewter/ Dark Pewter	●	●	●	○	○	○	○	○	○	○	○	○
	Prima grain vinyl in Dark Pewter	Dark Pewter/ Dark Pewter	○	○	○	○	○	○	○	○	○	○	○	○
Trend	Lattice/Twill fabric in Dark Pewter	Dark Pewter/ Dark Pewter	●	●	●	●	●	●	●	●	●	●	●	●
	Lattice/Twill fabric in Brilliant Blue	Brilliant Blue/ Dark Pewter	●	●	●	●	●	●	●	●	●	●	●	●
Limited	Lattice/Twill fabric in Dark Pewter	Dark Pewter/ Dark Pewter	●	●	●	●	●	●	●	●	●	●	●	●

● = Standard, ○ = Option, at extra cost. *Metallic paint is an option at extra cost but is free of charge on Trend and Limited models. ¹Available until Spring 2010 ^{††}Available from Spring 2010

Classic colours



1



3

Contemporary colours



6

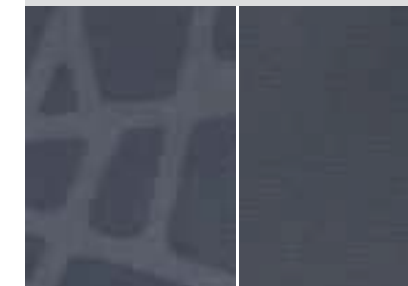


9



12

Ford Transit Connect Van, Trend Van and Limited Van
Lattice/Twill cloth seat trim in Dark Pewter



2



4



7

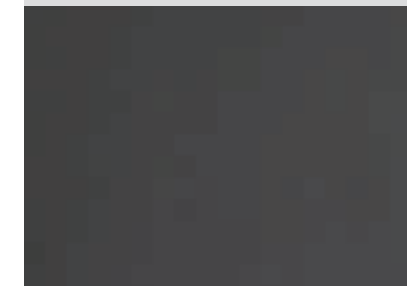


10



11

Ford Transit Connect Van
Prima Grain vinyl in Dark Pewter (Option)



Contemporary colours

- 6 Tango* (available until spring 2010)
- 7 Sea Grey*
- 8 Chill*
- 9 Ocean Blue* (available until spring 2010)
- 10 Avalon*
- 11 Ink Blue* (available from spring 2010)
- 12 Vision* (available from spring 2010)

Note The images used are to illustrate body colours only and may not reflect the vehicle described. Colours and trims reproduced within this brochure may vary from the actual colours, due to the limitations of the printing processes used.



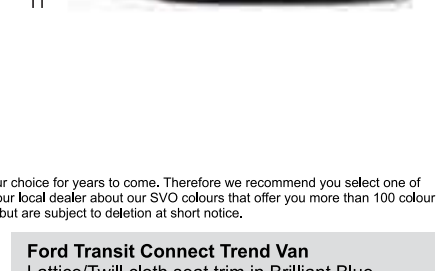
5



8



11



Ford Transit Connect Trend Van
Lattice/Twill cloth seat trim in Brilliant Blue (Option)



Illustrations, descriptions and specifications. This brochure was correct at the time of going to print. However, Ford policy is one of continuous product development. The right is reserved to change specifications, colours and prices of the models and items illustrated and described in this publication at any time. For the latest details always consult your Ford Dealer. **Optional equipment.** Throughout this publication, wherever a feature is described as being an 'Option' or 'Optional Fitment/Pack', etc., you should assume that it will be at extra cost to the base vehicle, unless specifically stated to the contrary. All models and colour combinations are subject to availability. **Note.** Some images portrayed are of a pre-production model and/or are computer generated, therefore, the design/features on the final version of the vehicle may differ in various respects. In addition, some of the features shown on the vehicles may be optional. **Note.** This brochure contains both original Ford accessories as well as a range of carefully selected products from our suppliers, which are featured under their own brands. All supplier branded products are subject to warranty terms defined by the relevant suppliers and do not lie within the responsibility of Ford. **Note.** The Bluetooth® word mark and logos are owned by the Bluetooth SIG, Inc. and any use of such marks by Ford Motor Company is under licence. Other trademarks and trade names are those of their respective owners.

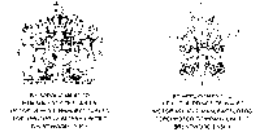
The Government fuel figures do not express or imply any guarantee of the fuel consumption of any particular car. The cars themselves have not been tested and there are inevitably differences between individual cars of the same model. In addition, a car may incorporate particular modifications. Furthermore, the driver's style and road and traffic conditions, as well as the extent to which the car has been driven and the standard of maintenance, will affect its fuel consumption. **Insurance groups** are only as recommended by the Association of British Insurers. You should always consult your insurance adviser for confirmation.



Collect Nectar points at participating Ford Dealers now. So keep a look out for the latest Ford offers at www.ford.co.uk/nectar or call the Ford Information Service on 0845 7111 888. Calls are charged at national rate and may be recorded for training purposes.



Ford recommends BP.



Published by Ford Motor Company Limited,
Brentwood, Essex, England.
Registered in England No. 235446.
FA 1554/2.
BJN 306306. FoE H51E.
PN 977513/1009/12.1m/GBR en.
October 2009.
© Ford Motor Company Limited.

www.ford.co.uk

Transit Connect Van
driver installed these lights