

FordFiestaVan

Feel the difference



Obsession is a good thing

Do you mind that your new Ford commercial vehicle is a result of minuscule design improvements to make it more efficient?

Do you mind that we carried out extreme tests of reliability?
(Such as 250,000 door slams on the same door.)

Do you mind that we dedicated hundreds of thousands of hours working out how to reduce your cost of ownership?

Do you mind that 300 specialist engineers tested every single component in your vehicle?

We think obsession is a good thing when you build commercial vehicles. If you drive one, you probably agree with us.



Model: Fiesta Van Trend, **Options:** Metallic paint.

Streets ahead

Make a great first impression. The stylish new Ford Fiesta Van speaks volumes about your business.



Fiesta Van ECOnetic

Fiesta Van ECOnetic and Fiesta Van models shown are finished in Midnight Sky (left) and Moondust Silver (right) metallic paint at extra cost. (Option)



Care for your customers and the environment with the Fiesta Van ECOnetic. Its specially-tuned diesel engine, improved aerodynamics and low rolling resistance tyres offer class-leading CO₂ emissions with reduced fuel economy to help keep business costs down without compromising on style or performance.

ECOnetic features

- 1.6-litre Duratorq TDCi 95 PS engine with an amazing fuel consumption of just 76.3 mpg (combined cycle)
- Body colour front and rear bumpers, door handles, tailgate handle and rear spoiler
- Lowered suspension
- 14" wheels with 6-spoke covers and 175/65 low rolling resistance tyres
- Ford Easy Fuel capless refuelling system
- CD/radio with MP3 compatibility, remote toggle controls and AUX socket

Gross payload 493 kg

Loadspace features

- 1.0 cu.m loadspace*
- 1296 mm load length
- Half-height horizontal bulkhead
- Full-height DIN-compliant bulkhead (option)
- 4 DIN-compliant cargo tie-down rings
- Full load floor rubber mat

Full-height bulkhead – lower composite, upper steel mesh (option)
Cargo tie-down rings are also shown. (Standard)



Fiesta Van



Concealed beneath its striking 'Ford Kinetic Design' lines, the new Ford Fiesta Van offers a spacious, high-quality interior and a versatile 1.0 cu.m loadspace. Upgrade to the Trend and you will enjoy an even more appealing package.

Van features

- 2 engine options: 1.25 Duratec petrol or 1.4 Duratorq TDCi; optimised for low cost of ownership
- Body colour rear roof spoiler
- Electrically-operated door mirrors with integral indicators
- Stereo radio/CD, MP3 compatible, AUX connector, 4 front speakers and steering wheel-mounted remote controls
- Steering column adjustable for reach and rake
- Electric Power-Assisted Steering (EPAS)
- Ford Intelligent Protection System (IPS), including driver's and front passenger's airbags*
- Side Airbags – head and thorax, includes active head restraint and driver's knee airbag (option)
- Anti-lock braking system (ABS) with electronic brake-force distribution (EBD)
- Electronic Stability Programme (ESP) with Traction Assist (TA) and Emergency Brake Assist (EBA) (option)

Gross payload 507-513 kg (depending on engine)



Ford Easy Fuel

Keeps hands clean at the pump and prevents accidental filling with the wrong fuel (standard).



*Note: A child seat should never be placed on the front passenger seat when the Ford vehicle is equipped with an operational front passenger's airbag.

*Measured using the VDA method in cubic metres.
Any additional options specified on the vehicle will reduce the payload accordingly. Kerb masses are subject to manufacturing tolerances and are for Base models with minimum equipment.

Fiesta Van Trend

Fiesta Van Trend and Fiesta Van Sport models are finished in Moondust Silver (left) and Panther Black (right) metallic paint at extra cost. (Option)



Upgrade to the Trend and enjoy an even more appealing package.

Trend Additional to Van

- Front fog lights
- Body coloured power folding, heated door mirrors
- Automatic windshield wiper and headlamps
- Auto dimming rear view mirror
- Trip computer
- Driver's seat with lumbar support
- Heated front windscreen

Gross payload 507-513 kg (depending on engine)

Trend styling

Front fog lights and body colour mirrors help to distinguish Trend models.



Any additional options specified on the vehicle will reduce the payload accordingly. Kerb masses are subject to manufacturing tolerances and are for Base models with minimum equipment.

Fiesta Sport Van



With its sporty hot-hatch looks and sparkling performance, the new Ford Fiesta Sport Van conveys a powerful image for you and your business.

Sport Van Additional to Trend

- 1.6 Duratorq TDCi diesel engine with optional Diesel Particulate Filter (DPF)
- 16" 5-spoke alloy wheels
- Sports-style bumpers with 'Sport' front grille
- Sports-style body colour rear roof spoiler
- Bluetooth® Hands-Free Phone and Voice Control System
- Multi Function Display (MFD)
- Front carpet mats
- Sports-style seats
- Scuff plates
- Leather-trimmed steering wheel
- Sports-tuned suspension with lowered ride height
- Electronic Stability Programme (ESP) with Traction Assist (TA) and Emergency Brake Assist (EBA)
- Perimeter Alarm
- Head and thorax airbags including active head restraints and driver's knee airbag

Gross payload 495 kg for 1.6 Duratorq TDCi diesel engine

Gross payload 492 kg for 1.6 Duratorq TDCi with DPF



Body colour rear roof spoiler
Standard.



*Measured using the VDA method in cubic metres.
Any additional options specified on the vehicle will reduce the payload accordingly. Kerb masses are subject to manufacturing tolerances and are for Base models with minimum equipment.
Note: The Bluetooth® word mark and logos are owned by the Bluetooth SIG, Inc. and any use of such marks by Ford Motor Company Limited and its associated companies is under licence. Other trademarks and trade names are those of their respective owners.
Note: It is an offence for drivers to use a hand-held mobile phone or similar device while driving.

We are all beginning to understand the impact that mobility is having on climate change. While we can't change things overnight, we are working very hard to find solutions.

Our range of finance, insurance, service and assistance options is designed with just one thing in mind – making life easy for you.

Making a difference now

Our latest range of engines complies with Euro Stage IV regulations. Duratorq TDCi diesel engines now develop more torque whilst delivering lower emissions. On Transit models, our Duratec 2.3L engine can be converted to run on liquefied petroleum gas (LPG) or compressed natural gas (CNG).

In the Ford car range, our optional Flexifuel engine is achieving emission reductions of around 30% to 80%** compared to conventional petrol engines.

Protecting the future

Using our Product Sustainability Index, a design for sustainability management tool, we are addressing the environmental, social and economic impacts of our vehicles from the earliest stages of their development*.

We are working on a wide range of vehicle technologies from biofuels to hybrids and clean diesels, and in the long term to hydrogen fuel-cell technology with the potential for near zero CO₂ emissions.

Improving our manufacturing facilities

We are constantly working to minimise the impact of our facilities on the environment. This includes pioneering on-site generation of electricity from sun and wind, implementing leading-edge manufacturing processes and full certification to the international standard for Environmental Management Systems; ISO 14001. This has led to improved environmental performance through savings in energy, water, material and waste-handling requirements.

Recycling for good

In the interests of sustainability, many of our components contain recycled and renewable content. All Ford vehicles are at least 85% recyclable and 95% recoverable in accordance with ISO 22628. We offer free take-back for qualifying vehicles at the end of their lives. All our take-back points are fully licensed and must also meet additional Ford quality standards for the professional receipt, treatment and recovery of end-of-life vehicles.

This brochure has been produced on paper based on fibres from sustainable forestry, using a 100% chlorine-free (TCF) bleaching process.
*For more about this topic, see <http://www.ford.com/en/company/about/sustainability/2006-07/downloads.htm>
**Dependent on feedstock used and production process. (Source: EUCAR CONCAWE study.) Ford supports the sustainable production of biofuels.

Ford Credit

Your Ford Transit Specialist Dealer can offer simple, plain language advice on the various ways of financing your purchase. They can help you complete an application and get a decision, usually within 15 minutes. For further details, visit www.ford.co.uk or contact your Ford Transit Specialist Dealer.

Ford Acquire is a straightforward way to own your vehicle. Simply put down a deposit, pay the remainder, plus interest, over an agreed period and the vehicle becomes yours.

Ford Business Partner Contract Hire* provides an affordable, convenient and flexible way to finance your business vehicle.

Ford Insure* is our comprehensive motor insurance product, designed specifically for Ford drivers.

Finance subject to status. **Business Users only.** Guarantees/Indemnities may be required. Freepost Ford Credit.
*Business Partner Contract Hire is provided by Lex Vehicle Leasing Limited, trading as Ford Business Partner, Heathside Park, Heathside Park Road, Stockport SK3 0RB.
*Ford Insure is underwritten and administered by Royal & Sun Alliance Insurance plc (No. 93792), Registered in England and Wales at St. Mark's Court, Chart Way, Horsham, West Sussex, RH12 1XL. Authorised and regulated by the Financial Services Authority. For your protection, telephone calls may be recorded and monitored.

Services

There are 222 Sales and 245 Aftersales Ford Transit Specialist Dealers across the UK, equipped and trained to meet Commercial Vehicle customer requirements. From these, 113 Sales and 95 Aftersales Dealers have achieved the 'Backbone standard' as recognition of their total commitment to delivering dedicated and professional sales and service support.

To find the location of your nearest Ford Transit Specialist Dealer, simply call the Ford Information Service on **0845 7111 888**, or visit the Ford Dealer locator at **www.fordvans.co.uk**

Ford Protect Every new Ford Fiesta Van is protected by a 3-year/60,000-mile Ford Protect Classic Warranty Plan, and also comes with a 1-year Ford Assistance package.

Ford Ranger is protected by a 3-year/60,000 mile Ford Protect Classic Warranty Plan

Ford Transit and Transit Connects are protected by a 3-year/100,000-mile bumper-to-bumper warranty.

Ford Transit Chassis Cab One-Stop bodywork is covered by a 3-year/100,000-mile warranty and a 3-year Perforation Warranty provided by the bodywork supplier.

Ford Perforation Warranty Every new Ford Fiesta Van, Transit and Transit Connect is covered by the Ford Perforation Warranty for 8 years* from the date of first registration. Ranger is covered for 6 years from the date of first registration.

Ford Assistance Ford Transits, Transit Connects and Rangers are supplied with a minimum of a 1-year Ford Assistance roadside package. Further details are available either on www.ford.co.uk or from your local Ford Dealer.

Ford Rapid Fit Our 'no appointments necessary, while-you-wait' fast-fit service for exhausts, brakes, batteries and more, at over 240 sites nationally.

Ford Accident Repair Centres Approved Ford Accident Repair Centres meet rigorous Ford standards and are the best place to return your vehicle to its pre-accident condition.

Contacts

Ford Customer Relationship Centre In the unlikely event that your Ford Dealer can't help you or if you need to speak to us directly, call 0845 841 1111 at local rates.

Ford Rental - local service nationwide Car and van rental from our latest model range. Contact your local Ford Dealer for more information.

Talkback - the company car drivers' club This is your club for extended test drives, special events, and advice on tax and buying issues. Join free, even if you don't drive a Ford, on www.talkbackclub.com or call 0845 605 55 66.

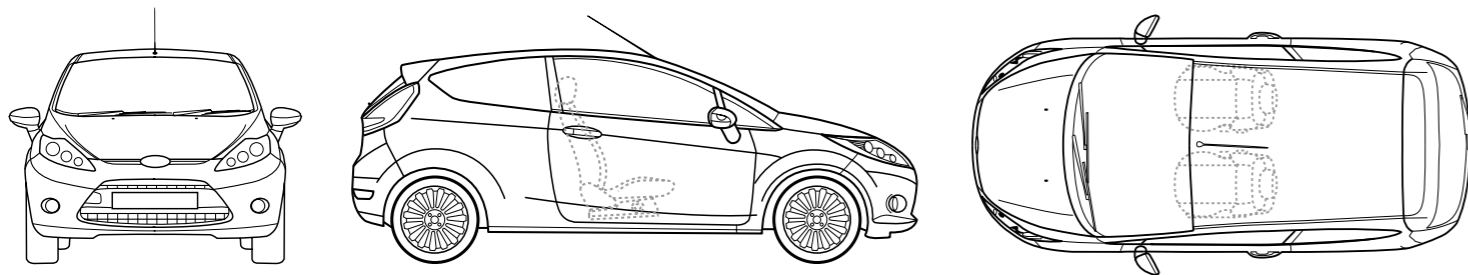
Ford Mobility Our MAGIC care centre provides free information on all motoring and mobility issues, including special offers for HRDLA and Motability recipients. Call free on 0800 240 241.

*Subject to terms and conditions.



Programme for the Endorsement of Forest Certification schemes

This brochure is printed on PEFC certified paper promoting sustainable forest management.



Dimensions

	Van
Overall length (mm)	3950
Overall length (mm) Sport version	3953
Overall length (mm) Bumper Styling Kit	3958
Overall width with mirrors (mm)	1973
Overall width without mirrors (mm)	1722
Overall width folded mirrors (mm)	1787
Overall height (mm) min	1433
Overall height (mm) max	1481
Turning circle – kerb to kerb (m)	10.2
Load Area[†]	
Load width between w/houses (mm)	1000
Load height (mm)	806
Load length (mm)	1296
Volume	1m ³
Fuel tank capacity (litres)	
Petrol	45
Diesel	45

[†]Measured in accordance with ISO 3832. Dimensions may vary dependent on the model and equipment fitted.

Weights and loads

	Kerbweight (kg) ^a	Gross Vehicle Mass (kg)	Gross Payload (kg)	Gross Train Mass (kg)	Max. Towable Mass (braked) (kg)	Max. Towable Mass (unbraked) (kg)
3-door Econetic Van						
1.6 TDCi with DPF, 5-speed manual (stage V)	1112	1530	493	n/a [*]	n/a [*]	n/a [*]
3-door Van and Trend Van						
1.25 petrol, 5-speed manual (stage V)	1058	1490	507	2090	600	525
1.4 TDCi, 5-speed manual (stage IV) [*]						
1.4 TDCi with DPF, 5-speed manual (stage V) [*]	1097	1535	513	2285	750	545
3-door Sport Van						
1.6 TDCi, 5-speed manual (stage IV) [*]	1130	1550	495	n/a [*]	n/a [*]	n/a [*]
1.6 TDCi with DPF, 5-speed manual (stage IV / V) [*]	1133	1550	492	n/a [*]	n/a [*]	n/a [*]

^aRepresents the lightest kerbweight assuming driver at 75 kg, full fluid levels and 90% fuel levels, subject to manufacturing tolerances and options, etc., fitted. Towing limits quoted represent the maximum towing ability of the vehicle at its Gross Vehicle Mass to restart on a 12 per cent gradient at sea level. The performance and economy of all models will be reduced when used for towing. Nose weight limit is a maximum of 75 kg on all models. Gross Train Mass includes trailer weight. **Note:** All vehicles are Durashift 5-speed manual unless otherwise stated. ^{*}Stage V with coated Diesel Particulate Filter will become standard from Autumn 2010, stage IV variants will no longer be available. ^{*}Towing with these vehicles is not permitted.

Fuel, performance and emissions

	Euro Stage	Maximum Power PS (kW)	Torque Nm (Nm with overboost)	CO ₂ emissions (g/km) ⁹⁰	Fuel consumption (mpg (L/100km) ⁹⁰)			Performance ⁹	
					Urban	Extra Urban	Combined	Max. speed (mph)	0-60 (secs)
3-door Econetic Van									
1.6 TDCi with DPF, 5-speed manual	Euro Stage V	95 (70)	212	98	61.4 (4.6)	88.3 (3.2)	76.3 (3.7)	110	11.8
3-door Van and Trend Van									
1.25 petrol, 5-speed manual	Euro Stage V	82 (60)	114	129	38.2 (7.4)	62.8 (4.5)	50.4 (5.6)	105	13.3
1.4 TDCi, 5-speed manual	Euro Stage IV [*]	68 (50)	160	110	53.3 (5.3)	80.7 (3.5)	67.3 (4.2)	101	14.9
1.4 TDCi with DPF, 5-speed manual	Euro Stage V [*]	69 (51)	160	107	61.4 (4.6)	76.3 (3.7)	68.9 (4.1)	101	14.8
3-door Sport Van									
1.6 TDCi, 5-speed manual	Euro Stage IV [*]	90 (66)	200	110	54.3 (5.2)	78.5 (3.6)	67.3 (4.2)	109	11.9
1.6 TDCi with DPF, 5-speed manual	Euro Stage IV [*]	90 (66)	200	110	54.3 (5.2)	78.5 (3.6)	67.3 (4.2)	109	11.9
1.6 TDCi with DPF, 5-speed manual	Euro Stage V [*]	95 (70)	205	107	57.7 (4.9)	78.5 (3.6)	68.9 (4.1)	109	11.8

⁹Ford test figures. ⁹⁰All CO₂ emissions figures in g/km and fuel consumption figures are from officially approved tests in accordance with EEC Directive 1999/100/EC. The CO₂ emissions and fuel consumption test figures shown in the chart do not express or imply any guarantee of the emissions or fuel consumption of a car of the class in question. All the figures are based on tests conducted on vehicles with standard wheels and tyres; optional or accessory wheels and tyres may have an effect on the emissions and fuel consumption of a vehicle. BP Ultimate, a range of advanced performance fuels, the perfect partner to meet the most demanding needs of Ford's class-leading technology. BP Ultimate can boost power and acceleration, lower exhaust emissions and improve fuel economy, compared with ordinary fuels. ^{*}Stage V with coated Diesel Particulate Filter will become standard from Autumn 2010, stage IV variants will no longer be available.

Mechanical features

	EONetic Van	Van	Trend Van	Sport Van
Engine				
Speed limiter – 62 mph (100 km/h) [*]	○	○		
Speed limiter – 70 mph (112 km/h) [*]	○	○		
Steering				
Electric Power Assisted Steering (EPAS)	●	●	●	●
Suspension				
Suspension – Standard tune		●	●	
Suspension – Lowered ride height	●			
Suspension – Sport tuned with lowered ride height				●
Suspension – Front stabiliser bar	●	●	●	●

● = Standard, ○ = Option, at extra cost. ^{*}Available from autumn 2010.

Safety and security

	EONetic Van	Van	Trend Van	Sport Van
Safety				
Anti-lock brakes with electronic brake-force distribution (EBD)	●	●	●	●
Electronic Stability Programme (ESP) with Traction Assist (includes Emergency Brake Assist (EBA) (only available with side airbags)	○	○	○	●
Hazard Warning Light – Automatic activation of all turn indicators when emergency braking is applied	●	●	●	●
Airbags – Driver's and front passenger's [*]	●	●	●	●
Airbag – Front passenger's airbag de-activation switch [*] (dealer-fitted option only)	○	○	○	○
Airbags – Driver and Passenger's Side Airbag Pack (Head and thorax, includes active head restraints and driver's knee airbag)	○	○	○	●
Security				
Central locking	●	●	●	●
Double dead locking	●	●	●	●
Remote control locking with 1 flip key and one plain key	●	●		
Remote control locking with 2 flip keys			●	
Remote control locking with 2 flip keys, perimeter alarm	○	○		●

***Note: A child seat should never be placed in the front passenger seat, when the Ford vehicle is equipped with an operational front passenger's airbag.**

Exterior equipment

	ECOnetic Van	Van	Trend Van	Sport Van
Design features				
Door mirrors – Black housing, electric operation, integrated side indicator	●	●		
Door mirrors – Body colour housing, heated, electric operation, integrated side indicator			●	●
Door mirrors – Electrically foldable			●	●
Bumpers – Front and rear, body colour with grey self-colour grille insert	●	●	●	
Bumpers – Sports styled body colour with skirts and grey colour sport grille insert				●
Front fog lights – Black bezel rings			●	●
Door handles – Black	●	●	●	
Door handles – Body colour				●
Tailgate handle – Body colour	●	●	●	●
Rear spoiler – Body colour	●	●	●	
Rear Sport spoiler – Body colour				●
Rear windows – Body colour composite panels		●	●	●
Wheels				
Steel – 14"x5.5", 6-spoke wheel covers, 175/65 tyres	●			
Steel – 15"x6", 6-spoke wheel covers, 195/50 tyres		●	●	
Alloy – 16"x6.5", 5-spoke, 195/45 tyres				●
Tyre inflator kit	●	●	●	●
Spare wheel – steel – 14"x 5.5", 175/65 tyre	○			
Locking wheel nuts (only with alloy wheels)				●
Detachable towbar and electrical kit		○	○	
Convenience features				
Ford Easy Fuel capless refuelling system with mis-fuel inhibit	●	●	●	●
Headlights – Twin chamber halogen reflector with black bezel	●	●	●	
Headlights – Halogen projector with chrome bezel				●
Headlights – 'Home Safe' feature	●	●	●	●
Rear parking aid	○	○	○	○
Tailgate wash/wipe (includes reverse gear wipe)	○	●	●	●
Wipers – Front, variable intermittent and anti-drip feature	●	●	●	●
Wipers – Automatic with rain sensor (includes automatic headlights)			●	●
Windscreen – Quickclear heated	○	○	●	●
Centre high-mounted rear brake light	●	●	●	●

● = Standard, ○ = Option, at extra cost.

Interior equipment

	ECOnetic Van	Van	Trend Van	Sport Van
Design features				
Floor mats – Front, velour				●
Gear knob soft feel (black insert surround and gaiter ring)	●	●	●	●
Handbrake release knob – Chrome	●	●	●	●
Steering wheel – 3-spoke, PU black	●	●	●	
Steering wheel – 3-spoke, leather-trimmed				●
Steering wheel column – Rake and reach adjustable	●	●	●	●
Front scuff plates	○	○	○	●
Front scuff plates – Illuminated				○
Unique foot pedals – Metallic				○
Audio and communication systems				
Radio/CD, MP3 compatible, 2-line display and 4 front speakers, remote audio controls on steering wheel and 3.5mm AUX connection for external music devices	●	●	●	
Radio/CD, MP3 compatible, multi-function display and 4 front speakers, remote audio controls on steering wheel and 3.5mm AUX connection for external music devices, Bluetooth® Hands-Free Telephone and Voice Control System	○	○	○	●
Climate control				
Manual heater	●	●	●	●
Heater – PTC (diesel engines only)	●	●	●	●
Air conditioning – Manual control	○	○	○	●
Comfort and convenience				
Trip computer – includes distance to empty/avg. fuel economy/avg. speed/outside temperature (standard on Diesel engines only)	○/●	○/●	●	●
Accessory power socket (12V)	●	●	●	●
Cigar lighter (in lieu of 12V power socket)	○	○	○	○
Centre console – with trinket tray, 2 cup holders and a large stowage bin	●	●	●	●
Courtesy light – For front passengers, overhead with theatre-style dimming; for rear passengers and in load compartment	●	●	●	●
Stowage pockets – Front passenger seat back				●
Windows – Electric front with one-touch lowering/closing on driver's side	●	●	●	●
Seats				
Front seats – Sports-style				●
Front seats – 2-way adjust head restraints	●	●	●	●
Front seat – Driver's lumbar support adjustment			●	●
Front seat – Driver's manual height and fore/aft adjustment	●	●	●	●
Front seat – Passenger's manual fore/aft adjustment	●	●	●	●
Loadspace				
Bulkhead – Half horizontal (composite)	●	●	●	●
Bulkhead – Full height (lower composite, upper steel mesh)	○	○	○	○
Four DIN compliant cargo tie down hooks	●	●	●	●
Load floor rubber mat	●	●	●	●
Load compartment side trim	●	●	●	●

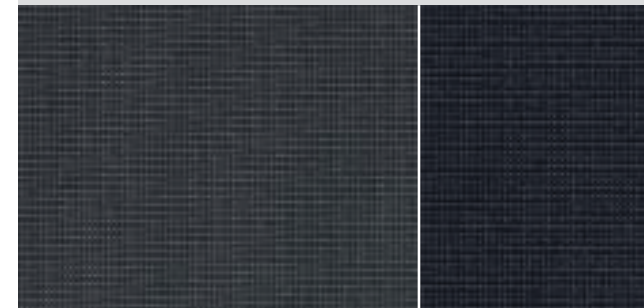
● = Standard, ○ = Option, at extra cost. The Bluetooth® word mark and logos are owned by the Bluetooth SIG, Inc. and any use of such marks by Ford Motor Company is under license. Other trademarks and trade names are those of their respective owners.

Trim and body colour availability

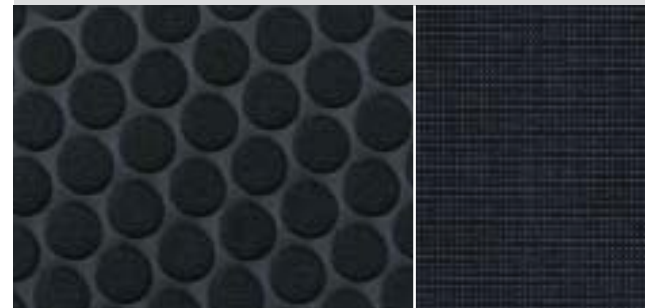
Model	ECOnetic Van and Fiesta Van	Trend Van	Sport Van
Seat trim and colour	Mondus Max in Fairland	Mondus Max in Fairland	Dotts in Syracuse
Seat bolster trim and colour	Mondus Max in Syracuse	Mondus Max in Syracuse	Mondus Max in Syracuse
Door trim and colour	Mondus Max in Fairland	Mondus Max in Fairland	Mondus Max in Fairland
Centre stack bezels/Door handle deco strips	Syracuse Metallic	Syracuse Metallic	Ingot
Upper instrument panel/Environment colour	Fairland/Syracuse	Fairland/Syracuse	Fairland/Syracuse
Solid body colours			
Blazer Blue	●	●	●
Colorado Red	●	●	●
Frozen White	●	●	●
Metallic body colours*			
Panther Black	○	○	○
Moondust Silver	○	○	○
Vision	○	○	○
Midnight Sky	○	○	○
Dark Micastone	○	○	○
Ink Blue	○	○	○

● = Standard, ○ = Option, *Metallic paint is an option at extra cost.

Mondus Max in Fairland seat facing, Mondus Max in Syracuse seat sides (Base and Trend)



Dotts in Syracuse seat facing, Mondus Max in Syracuse seat sides (Sport Van)



Colour and trim

Classic colours



1



2



3



4

Contemporary colours*



6



7



9

Classic colours

1. Colorado Red
2. Blazer Blue
3. Frozen White
4. Panther Black*
5. Moondust Silver*

Contemporary colours*

6. Ink Blue*
7. Vision*
8. Dark Micastone*
9. Midnight Sky*



5



8

Ford understands the colour you select may represent your corporate colour choice for years to come. Therefore we recommend you select one of our classic colours or, if you need a unique colour for your fleet, speak to your local dealer about our SVO colours that offer you more than 100 colour options. Contemporary colours reflect the latest trends in vehicle colouring but are subject to deletion at short notice.

*Metallic body colours are options, at extra cost.

Note The images used are to illustrate body colours only and may not reflect current specification or product availability in certain markets. Colours and trims reproduced within this brochure may vary from the actual colours, due to the limitations of printing processes used.

Illustrations, descriptions and specifications. This brochure was correct at the time of going to print. However, Ford policy is one of continuous product development. The right is reserved to change specifications, colours and prices of the models and items illustrated and described in this publication at any time. For the latest details always consult your Ford Dealer. **Optional equipment.** Throughout this publication, wherever a feature is described as being an 'Option' or 'Optional Fitment/Pack', etc., you should assume that it will be at extra cost to the base vehicle, unless specifically stated to the contrary. All models and colour combinations are subject to availability. **Note.** Some images portrayed are of a pre-production model and/or are computer generated, therefore, the design/features on the final version of the vehicle may differ in various respects. In addition, some of the features shown on the vehicles may be optional. **Note.** This brochure contains both original Ford accessories as well as a range of carefully selected products from our suppliers, which are featured under their own brands. All supplier branded products are subject to warranty terms defined by the relevant suppliers and do not lie within the responsibility of Ford. **Note.** The Bluetooth® word mark and logos are owned by the Bluetooth SIG, Inc. and any use of such marks by Ford Motor Company is under licence. Other trademarks and trade names are those of their respective owners.

The Government fuel figures do not express or imply any guarantee of the fuel consumption of any particular car. The cars themselves have not been tested and there are inevitably differences between individual cars of the same model. In addition, a car may incorporate particular modifications. Furthermore, the driver's style and road and traffic conditions, as well as the extent to which the car has been driven and the standard of maintenance, will affect its fuel consumption. **Insurance groups** are only as recommended by the Association of British Insurers. You should always consult your insurance adviser for confirmation.



Allergy-tested interior All materials used in the manufacture of the interior of this vehicle meet the strict requirements of the TÜV TOXPROOF Criteria Catalogue for Vehicle Interiors by the TÜV Produkt und Umwelt GmbH and are designed to minimise the risk of allergic reactions. With doors and windows closed, the interior materials selected – together with the integrated pollen filter – protect the passengers against most allergising particles from the outdoor air. At higher temperatures, the additional use of air conditioning is recommended.



Collect Nectar points at participating Ford Dealers and Authorised Repairers now. So take a look at the latest Ford Service Promotions by visiting the Owner Services section within www.ford.co.uk.



Ford and BP – working together to reduce fuel consumption and emissions.



When you have finished with this brochure please recycle it.



BY APPOINTMENT TO
HER MAJESTY THE QUEEN
MOTOR VEHICLE MANUFACTURERS
FORD MOTOR COMPANY LIMITED
BRENTWOOD ESSEX



BY APPOINTMENT TO
HIS ROYAL HIGHNESS THE DUKE OF
MOTOR VEHICLE MANUFACTURERS
FORD MOTOR COMPANY LIMITED
BRENTWOOD ESSEX

Published by Commercial Vehicle Marketing,
Ford Motor Company Limited,
Brentwood, Essex, England.
Registered in England No. 235446.
FA 1550/3
BJN 307000. FoE H46E.
PN 077503/0410/8.1m/GBR en
April 2010.

© Ford Motor Company Limited.

www.fordvans.co.uk

