

FordKa

Feel the difference





0.965237 of a millimetre

That's the thickness of a clay shaving. And to our designers it can make all the difference, as they hone and refine their clay prototype until they find the perfect expression of energy in motion.

The result is what we call Ford kinetic Design and we're passionate about it.

Bold, beautiful lines that you can't help falling in love with.



Listen up!

Rue de Orelles
Par un artiste inconnu

Great design speaks for itself. Ford Ka's cheeky shape says everything about its personality.

Model shown is a Ford Ka Titanium in Sunrise with 16" 5 Y-spoke alloy wheels (standard) and body colour rear spoiler (option).



In the air tonight

Leichtmetallräder Straße
Der unbekante Künstler

Make contact with state of the art sound and communication.

Model shown is a Ford Ka Titanium in Sunrise with Coral/Syracuse interior, Bluetooth® and USB (option) and ESP (option).



Magic roundabout

Via Volante

Da un artista sconosciuto

Very few cars have it. The ability to turn a short spin into a wide open grin.

Model shown is a Ford Ka Titanium with Scuba metallic paint (option), 16" 5 Y-spoke alloy wheels (standard) and body colour rear spoiler (option).



Flotation Tank

Airbag Fountain
An unknown artist

So many reasons to love it. The way it looks.
The way it drives. And the way it protects.

Model shown is a Ford Ka Titanium with Piste pearlescent paint (option) and 16" 5 Y-spoke alloy wheels (standard).





Premium trip computer
Average speed and fuel consumption, trip time and distance, range and outside temperature. (Standard on Zetec/Titanium)



Connected to your friends. Connected to your music. And, with a console that looks this amazing, connected to your car.

Tune in.
Chill out

Bluetooth® and USB

It's the coolest way to stay in tune and in touch, wherever your Ford Ka takes you. This optional feature includes:

Built-in USB Port

Lets you listen to, and operate, your MP3 player via the car's audio system, and also view MP3 track and phone info on the Premium trip computer (option).

Bluetooth® Voice Control System

You can control your Bluetooth® compatible mobile phone and audio system with the sound of your voice (option).

Remote audio controls

Convenient toggle switches on the steering wheel let you control the system's key functions with ease.



The Bluetooth® word mark and logos are owned by the Bluetooth SIG, Inc. and any use of such marks by Ford Motor Company Limited and its associated companies is under licence. Other trademarks and trade names are those of their respective owners.

Pearlescent console shown with silver gear knob insert and air vent rings and EATC is standard on Ford Ka Titanium. Optional feature ESP is shown.

*To check Bluetooth®-enabled phone compatibility, please contact your Ford Dealer or visit www.ford-mobile-connectivity.com/home



The next generation of power steering
Ford Ka's sophisticated new Electric Power-Assisted Steering (EPAS) delivers full power when you park for feather-light manoeuvring. When you're on the move, it steadily weights up to just the right amount for optimum feel and control.



Glued to the road and looking great. Surrounded by clever features and securely seated even in the tightest bend. You'll never want to get out.

Get out more.
Stay in



Image opposite: Model shown is a Ford Ka Titanium with Sunrise paint and 16" 5 Y-spoke alloy wheels (standard).

*Standard on all Stage V engines.

Ford Auto-Start-Stop system

When idling, the engine automatically shuts down to save fuel. When you want to drive off, the engine immediately restarts*.

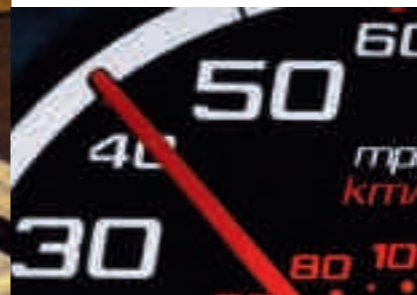
Ford-tuned suspension

Only Ford's famous development team can make a car react so instantly and accurately to your command, making it feel like an extension of you.



Maximum speed alert

You set the speed, and a flashing light and audible alarm protect you and your licence. (Standard).





Leather seats
Beautifully stitched in your choice of two seat colours. Shown here in Syracuse. (Option on Titanium)



Look beneath the Ford Ka's stunning exterior. You'll find a different kind of beauty composed of strength, obsessive attention to detail and quality that's built to last.

Hidden strength.
Visible beauty

A monument to quality

Ford Ka went on a fantastic 1.5 million kilometre European vacation – from baking 40°C heat to lung-straining 1,522-metre altitudes – to prove its durability. Cádiz to Madonna Di Campiglio anyone..

Intelligent Protection System

Beneath the steel safety cage lies a comprehensive airbag system, three-point seat belt pre-tensioners and collapsible steering column and pedals. All ready to spring into action in a fraction of a second.

Airbags

Driver's and front passenger's airbags are standard. Curtain airbags (including side) are optional.

ISOFIX

Anchorage for quick and safe fitting of child seats in the rear.

Emergency Brake Assist (EBA)

Automatically senses when you brake hard and provides additional braking force.

Hazard warning lights

Front and rear indicators automatically flash during heavy braking, giving other drivers advance hazard warning.

Rear parking sensor

An audible warning helps you to safely judge parking distances. (Option)

Tyre mobility kit

The easy way to reach your destination after a puncture. No more changing wheels. Simply plug it in and your tyre inflates. (Standard)



*Note: A child seat should never be placed in the front passenger seat when the Ford vehicle is equipped with an operational front passenger's airbag. The safest place for children is properly restrained on the rear seat.

Quality that's clear to see
Every Ford Ka features a high-quality paint finish but Piste pearlescent body colour comes with a special 3-coat paint process for an even more premium appearance. (Option on Zetec and Titanium)



Pearl White instrument panel
Shown here with Electronic Automatic Temperature Control (EATC, standard on Titanium).





Image above: Model shown is a Ford Ka Studio with Sunrise paint.

Image opposite: Model shown is a Ford Ka Studio with Fairland / Syracuse interior environment.

Great to look at. Great to drive. And bursting with character, Studio is the perfect intro to new Ford Ka.

Features:

- Stereo radio/CD player with MP3, AUX jack and 6 speakers
- Body colour bumpers
- Headlight courtesy delay
- Tinted glass
- Electric Power-Assisted Steering (EPAS)
- Intelligent Protection System (IPS) with driver's and front passenger's airbags♦
- Anti-lock braking system (ABS) with electronic brake-force distribution (EBD)
- Accessory power socket (12V)
- Tilt-adjustable steering column
- Tyre mobility kit
- Manual front windows
- ISOFIX
- Smokers pack
- Rear seat head restraints

*Note: A child seat should never be placed in the front passenger seat when the Ford vehicle is equipped with an operational front passenger's airbag. The safest place for children is properly restrained on the rear seat.

Body colour bumpers
(Standard)

Headlight courtesy delay
The headlights stay on for a few seconds to illuminate the way to your front door. (Standard)

Trip computer
Tells you your range, distance covered, average speed and fuel consumption, plus the time you've been on the road. (Standard)

Floor console with cup holder
(Standard)

Auto Hazard Warning Lights
The hazard warning lights (front and rear indicators) are automatically activated during heavy braking, giving following drivers advance warning of a potentially hazardous situation. (Standard)





Image above: Model shown is a Ford Ka Edge with Strobe metallic paint (option).

Image opposite: Model shown is a Ford Ka Edge with Syracuse / Fairland interior environment.

Want more? Have it. Edge gives you remote control, power operation and extra clever features. Go on, spoil yourself.

Additional to Studio:

- Body colour door mirror housings with power-operated and heated mirrors
- Body colour door handles and tailgate handle
- Air conditioning
- Electrically-operated front windows, one-shot-down driver's window
- Remote central locking with retractable key
- Easy entry tipping driver's seat with manual height adjustment
- Driver's manual 4-way seat adjustment
- Front passenger's underseat stowage with flip-up cushion
- Driver and front passenger seatback map pockets
- 50:50 split / folding rear seat backs

Body colour door handles
(Standard)

Body colour door mirror housings
With power-operated and heated mirrors.
(Standard)

Body colour tailgate handle
(Standard)

Remote central locking with retractable key
(Standard)

China white door inserts
(Standard)

Seat Upgrade Pack
Superior comfort and convenience, including tipping and memory function, driver's height adjustment, extra storage and more.
(Standard on Edge)





Image above: Model shown is a Ford Ka Zetec with Scuba metallic paint (option).

Image opposite: Model shown is a Ford Ka Zetec with Turquoise / Florida interior environment, and Bluetooth® and USB (option).

If you're looking for the ultimate new Ford Ka, look no further.

Additional to Edge :

- 15" multispoke alloy wheels
- Front fog lights
- Privacy glass
- Pearl White inserts on steering wheel spokes
- Silver insert on gear knob
- Quickclear heated windscreen
- Premium trip computer
- Courtesy light delay
- Front and rear premium velour mats
- Headliner stowage net
- Flexible accessory holder
- Leather steering wheel

Flexible accessory holder
Fits around the centre console – with a net on either side. (Standard)

Front fog lights
(Standard)

Premium velour mats
(Standard)

Premium steering wheel with Pearl White insert
(Standard)
Image shown with optional Bluetooth and USB

Premium trip computer
Adds outside temperature readings and data from your MP3 player and phone (when optional Bluetooth and USB is fitted). (Standard)

Pearl White centre console
(Standard)





Image above: Model shown is a Ford Ka Titanium with Piste special paint (option).

Image opposite: Model shown is a Ford Ka Titanium with Turquoise / Florida interior environment.

With Titanium, you're getting into premium equipment levels that would embarrass many much larger cars.

Additional to Zetec :

- 16" 5 Y-spoke alloy wheels
- Advanced Music Pack (stereo radio / CD player with MP3, AUX jack, subwoofer, amplifier and six premium speakers) - deletes underseat stowage
- Electronic Automatic Temperature Control (EATC)
- Scuff plates with 'Ka' graphic
- Chrome door handles and tailgate handle
- Chrome exhaust pipe finisher
- Silver gear knob insert, air vent rings and door release handles

16" 5 Y-spoke alloy wheels
(Standard)

Premium leather steering wheel with Pearl White insert
(Standard)

Chrome door handles
(Standard)

Chrome tailgate handle
(Standard)

Chrome exhaust pipe finisher
(Standard)

Scuff plates with 'Ka' graphic
(Standard)





Individual is the smartest way to personalise your Ford Ka. Choose from three themes starting with Grand Prix as shown here. And how about your lucky number, from 0 to 9, on the doors? (accessory)



Ford Individual: Grand Prix

Features (as Zetec plus):

- 16" 5 Y-spoke alloy wheels
- Stripe on bonnet, roof and tailgate
- Rear Spoiler
- Chrome exhaust pipe finisher
- Bodyside stripes
- Contrast coloured grille and mirror caps
- Door-mounted number and circle decals available as an accessory
- Unique seat fabric design
- Red door trim inserts
- Red/Syracuse leather steering wheel with pearlescent insert
- Red leather handbrake handle with Syracuse gaiter
- Pearl white gear knob with Red leather insert, Syracuse gaiter and Red stitching
- Pearl White detail on door handles, air vents and centre console
- Premium velour mats with contrasting Red stitching and embroidered Red Ford Individual logo

*Available in White for Sunrise, and in Sunrise for Crystal and Piste.



Unique Red and White seat fabric design



Image left: Model shown is a Grand Prix Ka, Bluetooth and USB (option).

Image right: Model shown is a Grand Prix Ka with door number decals (accessory).

Red Leather Handbrake handle
(Standard)

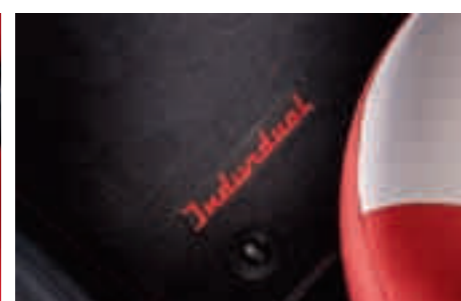
Premium velour mats
With contrasting red stitching and embroidered Ford 'Individual' logo. (Standard)

Contrasting door mirror caps
Shown in Sunrise on Crystal

Contrasting front grille and bonnet stripe
Shown with grille in Sunrise and bonnet stripe in Red on Crystal.

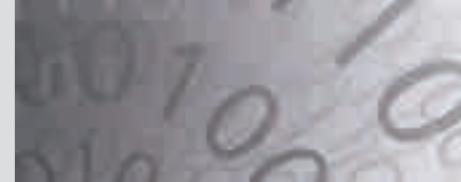
Body colour rear spoiler
(Standard)

16" 5 Y-spoke alloy wheel
(Standard)





Join the digital revolution with this dazzling look.



**Ford Individual:
Digital**

- Features** (as Zetec plus):
- 16" 5 Y-spoke alloy wheels
 - Chrome exhaust pipe finisher
 - Stripe on bonnet, roof and tailgate with Digital design
 - Bodyside stripes with Digital design
 - Grille and mirror caps in Jump
 - Unique Digital seat fabric design
 - Lime door trim inserts
 - Lime/Syracuse leather steering wheel with insert in Jump
 - Jump leather handbrake handle with Syracuse gaiter
 - Aluminium-look gear knob with Lime leather insert, Syracuse gear lever gaiter and Lime contrasting stitching
 - Details in Jump on door handles, air vents and centre console
 - Premium velour mats with contrasting stitching and embroidered Ford Individual logo



Unique Digital seat fabric design
In Syracuse / Lime fabric.



Image right: Model shown is a Digital-themed Ford Ka with Midnight metallic paint (option).

Image opposite : Model shown is a Digital-themed Ford Ka with Bluetooth® and USB (option)

Aluminium-look gear knob with Lime leather insert, Syracuse gear lever gaiter and Lime contrast stitching
(Standard)

Lime leather handbrake handle with Syracuse gaiter
(Standard)

Jump-coloured door grab handle inserts
(Standard)

Premium velour mats with Lime contrast stitching
(Standard)

Contrasting door mirror caps and grille
(Standard)

16" 5 Y-spoke alloy wheel
(Standard)



Everyone will want to look at your tattoo.



Features (as Zetec, plus):

- 16" 5 Y-spoke alloy wheels
- Chrome door handles and tailgate handle
- Chrome exhaust pipe finisher
- Tattoo emblem decals on roof and front wings in Anthracite and Silver
- Syracuse / Silver-Grey seat fabric with embossed Tattoo emblem
- Syracuse leather trimmed seat with embossed Tattoo emblem (standard on Tattoo Premium)
- Door inserts in Silver-Grey fabric with fabric seats and Syracuse leather with leather trimmed seats
- Syracuse leather steering wheel with Pearl White insert
- Syracuse leather handbrake handle with Syracuse gaiter
- Pearl White gear knob with Syracuse Leather insert
- Pearl White detail on door handles, air vents, flexible accessory holder and centre console
- Premium velour mats with contrasting stitching and embroidered Tattoo emblem
- Scuff plates with 'Ka'graphic

Ford Individual: Tattoo



Unique seat fabric design
Seat shown in Syracuse / Silver-Grey fabric.



Unique leather seat design
Shown in Syracuse leather.



Image right: Model shown is a Tattoo Ka with Blush special paint finish (option).

Image opposite: Model shown is a Tattoo Premium Ka with Bluetooth and USB (option).

Premium velour mats and scuff plates
Floor mats with contrasting stitching and embroidered Tattoo emblem, and scuff plates with 'Ka graphic'. (Standard)



Leather handbrake handle
(Standard)



Tattoo side decals
(Standard)





Studio

■ Features:

- Body colour bumpers
- Headlight courtesy delay
- Tinted glass
- Electric Power-Assisted Steering (EPAS)
- Intelligent Protection System (IPS) with driver's and front passenger's airbags*
- Anti-lock braking system (ABS) with electronic brake-force distribution (EBD)
- Accessory power socket (12V)
- Height-adjustable steering column
- Tyre mobility kit
- Tipping front passenger's seat for easy entry to rear compartment
- Rear seat head restraints
- Integrated ISOFIX child seat mounts in rear seats
- Smokers pack

■ Engines

- Petrol
- 1.2 Duratec (Stage IV) *
- 1.2 Duratec (with Ford Auto-Start-Stop system) (Stage V) **

*Note: A child seat should never be placed in the front passenger seat when the Ford vehicle is equipped with an operational front passenger's airbag. The safest place for children is properly restrained on the rear seat.

Edge

Additional to Studio:

- Air conditioning
- Body colour door mirror housings with power-operated and heated mirrors
- Body colour door handles and tailgate handle
- Electrically-operated front windows, one-shot-down driver's window
- Remote central locking with retractable key
- Easy entry tipping driver's seat with manual height adjustment
- Driver's manual 4-way seat adjustment
- Front passenger's underseat stowage with flip-up cushion
- Driver and front passenger seatback map pockets
- 50:50 split / folding rear seat backs

■ Engines

- Petrol
- 1.2 Duratec (Stage IV) *
- 1.2 Duratec (with Ford Auto-Start-Stop system) (Stage V) **

Zetec

■ Additional to Edge :

- 15" multispoke alloy wheels
- Front fog lights
- Quickclear heated windscreen
- Privacy glass
- Leather steering wheel with pearl white inserts
- Pearl White flexible accessory holder
- Silver insert on gear knob
- Premium trip computer
- Theatre-style courtesy light dimming
- Front and rear premium velour mats
- Headliner stowage net

■ Engines

- Petrol
- 1.2 Duratec (Stage IV) *
- 1.2 Duratec (with Ford Auto-Start-Stop system) (Stage V) **
- Diesel
- 1.3 Duratorq (with DPF and Ford-Auto-Start-Stop system) (Stage V) **

Titanium

■ Additional to Zetec :

- 16" 5 Y-spoke alloy wheels
- Advanced Music Pack (stereo radio / CD player with MP3, AUX jack, subwoofer, amplifier and six premium speakers)
- Elelectronic Automatic Temperature Control (EATC)
- Scuff plates with 'Ka' graphic
- Chrome door handles and tailgate handle
- Chrome exhaust pipe finisher
- Silver gear knob insert, air vent rings and door release handles

■ Engines

- Petrol
- 1.2 Duratec (Stage IV) *
- 1.2 Duratec (with Ford Auto-Start-Stop system) (Stage V) **
- Diesel
- 1.3 Duratorq (with DPF and Ford-Auto-Start-Stop system) (Stage V) **

Grand Prix

■ Additional to Zetec :

- 16" 5 Y-spoke alloy wheels
- Rear spoiler
- Grand Prix exterior and interior styling
- Chrome exhaust pipe finisher

■ Engines

- Petrol
- 1.2 Duratec (Stage IV) *
- 1.2 Duratec (with Ford Auto-Start-Stop system) (Stage V) **

Digital

■ Additional to Zetec :

- 16" 5 Y-spoke alloy wheels
- Digital exterior and interior styling
- Chrome exhaust pipe finisher

■ Engines

- Petrol
- 1.2 Duratec (Stage IV) *
- 1.2 Duratec (with Ford Auto-Start-Stop system) (Stage V) **

Tattoo

■ Additional to Zetec :

- 16" 5 Y-spoke alloy wheels
- Tattoo exterior and interior styling
- Chrome door handles, tailgate handle and exhaust pipe finisher
- Scuff plates with 'Ka' graphic

■ Engines

- Petrol
- 1.2 Duratec (Stage IV) *
- 1.2 Duratec (with Ford Auto-Start-Stop system) (Stage V) **

Tattoo Premium

■ Additional to Tattoo:

- Tattoo interior styling with premium leather trimmed heated seats

■ Engines

- Petrol
- 1.2 Duratec (Stage IV) *
- 1.2 Duratec (with Ford Auto-Start-Stop system) (Stage V) **



16" 5 Y-spoke alloy wheel
(See specification pages for availability)

Eibach suspension-lowering kit
Enhances driving performance and handling as well as giving a more sporty appearance. Lowers the car by approximately 30 mm. (Accessory)



Make a bold statement with your choice of stunning alloy wheels. You can also have fun combining them with the many options available for the Ford Ka.

Alloy wheels:
Mix and match



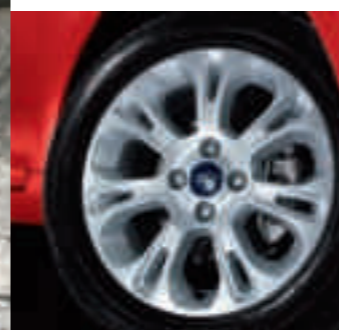
14" steel wheel with 6-spoke wheel cover
(Standard on Studio and Edge)



14" 4x2-spoke alloy wheel
(Option on Edge, or as an accessory on all other models)



15" multispoke alloy wheel
(Standard on Zetec, or as an accessory on all other models)



15" 7x2-spoke Silver alloy wheel
Available as an accessory on all models. Also available in white as an accessory.



16" 5 Y-spoke alloy wheel
Option on Zetec, standard on Titanium, Digital, Grand Prix and Tattoo.



16" 5 Y-spoke alloy wheel in Piste*
(option on Grand Prix, or as an accessory on all other models)

Note The 16" wheels available on Ford Ka are designed to deliver more sporting driving characteristics and a firmer ride quality compared to standard 14" and 15" wheels.

* Only available with Midnight, Moonlight, Piste, Strobe and Sunrise.



Advanced Music Pack
Includes premium speakers, amp and subwoofer. Your very own gig on wheels. (Standard on Titanium)

Audio
Stereo radio-CD player with MP3 capability, 6 speakers and an AUX jack. (Standard)



New Ford Ka is designed to keep you connected and tuned in when you're out and about

Audio and connectivity:
Stay in touch



Pioneer premium loudspeakers
Pioneer's latest speakers offer unrivalled sound quality, good looks and value for money. (Accessory)

Remote audio controls
Convenient toggle switches on the steering wheel let you control the system's key functions with ease. (Part of Bluetooth® and USB Option).



Bluetooth® Voice Control System
Lets you control your Bluetooth® compatible mobile phone and audio system with the sound of your voice. (Part of Bluetooth® and USB Option).



Portable navigation
Leave your maps behind with a simple and intuitive portable GPS navigation system. Please contact your Ford Dealer for details(accessory).



Note The Bluetooth® word mark and logos are owned by the Bluetooth SIG, Inc. and any use of such marks by Ford Motor Company Limited and its associated companies is under licence. Other trademarks and trade names are those of their respective owners.

*To check Bluetooth®-enabled phone compatibility, please contact your Ford Dealer or visit www.ford-mobile-connectivity.com/home



Make an impression
Model shown is a Ford Ka Tattoo with Dive metallic body colour (option).

Body colour rear spoiler
Available as an option or accessory. Shown in Strobe metallic body colour (option).



We're all different. So why not show it? Express yourself with our exterior styling accessories. And boost your new Ford Ka's versatility with our range of carrier systems.

Exterior style:
Express yourself

Britax Römer child seat*
Various seats available for all ages, also with ISOFIX.

*Note: A child seat should never be placed in the front passenger seat when the Ford vehicle is equipped with an operational front passenger's airbag. The safest place for children is properly restrained on the rear seat.



Thule bicycle carrier attachment
(Accessory)



Thule ski / snowboard carrier
(Accessory)



Base roof carrier
Carrier is the base platform for all roof transportation accessories. (Accessory)





Leather Pack

Consists of leather trimmed seats (choice of either Florida or Syracuse), leather door inserts, heated seats, Pearl White gear knob with leather insert, and leather handbrake handle (option on Titanium).

Aluminium pedal set
(accessory)



The range of custom-designed options and accessories for new Ford Ka's interior is the perfect opportunity to indulge your love of style.

Interior style:
Express yourself



Heated front seats

Perfect for your bottom on cold mornings. (Included with optional leather pack)

Anti-slip mat

Luggage compartment protection, moulded to fit perfectly into the Ford Ka. Incorporates anti-slip surface. (Accessory)



Scuff plates with 'Ka' graphics

(Standard on Titanium and Tattoo, and available as an accessory on all other models)



Leather seat trim

Shown in Syracuse (left) and Florida (right). Also includes leather door inserts and heated front seats. (Option – available on Titanium models only)

Image opposite: Model shown is a Ka Titanium with optional Leather Pack, Bluetooth, USB and ESP

Premium velour floor mats

Premium velour floor mats in Syracuse. (Standard on Zetec and Titanium models. Accessory on all other models)



Flexible accessory holder

Fits around the centre console – with a net on either side. (Standard on Zetec and Titanium, and available as an accessory on all other models)



We are all beginning to understand the impact that mobility is having on climate change. While we can't change things overnight, we are working very hard to find solutions.

Our range of finance, insurance, service and assistance options is designed with just one thing in mind – making life easy for you.

Ford ECOnetic Technologies

Ford has developed a range of sustainable technologies, which vary by model, in order to improve fuel economy, reduce CO₂ and lower cost of ownership. These include Ford EcoBoost advanced, fuel-efficient petrol engines, Ford PowerShift transmission and Ford Auto-Start-Stop.

A low emission diesel ECOnetic derivative is now available. The Ford Fiesta ECOnetic delivers more than 76.3 mpg, emitting just 98 g/km of CO₂.

Longer term Ford ECOnetic Technologies will expand to include electric and hybrid-electric vehicles, biofuel-capable vehicles, plug-in hybrids and hydrogen fuel cell-powered vehicles

Protecting the future

Using our Product Sustainability Index, a design for sustainability management tool, we are addressing the environmental, social and economic impacts of our vehicles from the earliest stages of their development*.

We are working on a wide range of vehicle technologies from biofuels to hybrids and clean diesels, and in the long term to hydrogen fuel-cell technology with the potential for near zero CO₂ emissions.

Improving our manufacturing facilities

Elsewhere, we are working to minimise the impact of our facilities on the environment, for example by pioneering on-site generation of electricity from sun and wind.

Breathe easier

The allergy-tested interiors of Ford Fusion, Ford Focus, Ford Kuga, Ford Mondeo, Ford S-MAX and Ford Galaxy models were the first worldwide to receive the approval of the independent German TÜV organisation.

Recycling for good

In the interests of sustainability, many of our components contain recycled and renewable content. All Ford vehicles are at least 85% recyclable and 95% recoverable in accordance with ISO 22628. We offer free take-back for qualifying vehicles at the end of their lives. All our take-back points are fully licensed and must also meet additional Ford quality standards for the professional receipt, treatment and recovery of end-of-life vehicles.

This brochure has been produced on paper based on fibres from sustainable forestry, using a 100% chlorine-free (TCF) bleaching process.

*For more about this topic, see www.ford.com/go/sustainability

**Dependent on feedstock used and production process. (Source: EUCAR CONCAWE study). Ford supports the sustainable production of biofuels.

Ford Credit

When it comes to financing your vehicle, your Ford Dealer can remove the need for lengthy phone calls, endless online surfing and form-filling. They can help you complete an application and will get a decision, usually within 15 minutes.

So what can your Ford Dealer provide? **Ford Options** offers increased flexibility if you want to change your car more often; **Ford Acquire** is ideal for private and business users who want a more straightforward financing plan; **Ford Business Partner Contract Hire*** provides an affordable, convenient and flexible way to finance your business vehicle; and **Ford Insure**** is our comprehensive motor insurance product, designed specifically for Ford drivers.

Finance subject to status. Guarantees/indemnities may be required. Freeport Ford Credit.

*Business Partner Contract Hire is provided by Lex Vehicle Leasing Limited, trading as Ford Business Partner, Heathside Park, Heathside Park Road, Stockport SK3 0RB.

**Ford Insure is underwritten and administered by Royal & Sun Alliance Insurance plc, which is authorised and regulated by the Financial Services Authority. FCE Bank plc is authorised and regulated by the Financial Services Authority and acts as an insurance intermediary in relation to Ford Insure. In relation to this same product, Ford Motor Company Limited is an appointed representative of FCE Bank plc. Ford Motor Company Limited acts as an insurance intermediary. Calls may be recorded and monitored.

Services

Ford Protect

Your new Ford is protected by a 3-year/60,000-mile Ford Protect Classic Plan Warranty, and comes with Ford Assistance roadside cover throughout the UK and Europe for 1 year. You can also upgrade to a Ford Protect Premium Plan, giving you the option of scheduled servicing and extended Ford Assistance.

Ford Service

Like any vehicle, your new Ford needs servicing regularly to keep it in the best condition and to maintain its value. The Ford authorised repairer network is independently quality checked to ensure the highest standards of workmanship are maintained. Ford has the largest repairer network in the UK, and uses Ford-trained technicians, Ford-specific tools and the latest computerised diagnostic equipment specifically for your Ford.

Ford Accident Repair Centres

Should your Ford require accident repair, an approved Ford Accident Repair Centre is the best place to return your vehicle to its pre-accident condition. Repairers displaying the Ford Accident Repair Centre sign meet the rigorous customer service, technical and quality standards demanded by Ford. Ford trained technicians, the latest repair equipment and the use of original parts mean that the future safety and value of your vehicle are assured.

Contacts

Ford Customer Relationship Centre

In the unlikely event that your Ford Dealer can't help you or if you need to speak to us directly, call 0845 841 1111 at local rates.

Ford Rental - local service nationwide

Car and van rental from our latest model range. Contact your local Ford Dealer for more information.

Ford Mobility

Our MAGIC care centre provides free information on all motoring and mobility issues, including special offers for HRDLA and Motability recipients. Call free on 0800 240 241.

Exterior equipment

| | Studio | Edge | Zetec | Titanium | Grand Prix | Digital | Tattoo | Tattoo Premium |
|------------------------------------------------------------------------------|--------|------|-------|----------|------------|---------|--------|----------------|
| Design features | | | | | | | | |
| Door mirrors – Black housing, manually adjusted | ● | - | - | - | - | - | - | - |
| Door mirrors – Body colour housing, heated and power-operated | - | ● | ● | ● | - | - | ● | ● |
| Door mirrors – Contrasting accent colour housings, heated and power-operated | - | - | - | - | ● | ● | - | - |
| Bumpers – Body colour front | ● | ● | ● | ● | ● | ● | ● | ● |
| Bumpers – Body colour rear | ● | ● | ● | ● | ● | ● | ● | ● |
| Door handles – Self colour | ● | - | - | - | - | - | - | - |
| Door handles – Body colour | - | ● | ● | - | ● | ● | - | - |
| Door handles – Chrome | - | - | - | ● | - | - | ● | ● |
| Exhaust finisher – Chrome | - | - | - | ● | ● | ● | ● | ● |
| Paint – Solid | ● | ● | ● | ● | ● | ● | ● | ● |
| Paint – Metallic | ○ | ○ | ○ | ○ | ○ | ○ | ○ | ○ |
| Paint – Special | - | - | ○ | ○ | ○ | ○ | ○ | ○ |
| Front fog lights | - | - | ● | ● | ● | ● | ● | ● |
| Tinted Glass | ● | ● | - | - | - | - | - | - |
| Privacy glass (rear window only) | - | - | ● | ● | ● | ● | ● | ● |
| Rear spoiler (Body colour) | - | - | ○ | ○ | ● | ○ | ○ | ○ |
| Tailgate handle – Self colour | ● | - | - | - | - | - | - | - |
| Tailgate handle – Body colour | - | ● | ● | - | ● | ● | - | - |
| Tailgate handle – Chrome | - | - | - | ● | - | - | ● | ● |
| Wheels | | | | | | | | |
| Steel – 14"x5½", 6-spoke wheel cover, 175/65 tyres | ● | ● | - | - | - | - | - | - |
| Alloy – 14"x5½", 5x2-spoke, 175/65 tyres | - | ○ | - | - | - | - | - | - |
| Alloy – 15"x6", 13-spoke, 195/50 tyres | - | - | ● | - | - | - | - | - |
| Alloy – 16"x6½", 5x2-spoke, 195/45 tyres | - | - | ○ | ● | ● | ● | ● | ● |
| Alloy – 16"x6½", 5x2-spoke 'Piste', 195/45 tyres | - | - | - | - | ○ | - | - | - |
| Locking wheel bolts (with Alloy wheels) | - | □ | ● | ● | ● | ● | ● | ● |
| Non-locking wheel bolts | ● | ● | - | - | - | - | - | - |
| Tyre Mobility Kit | ● | ● | ● | ● | ● | ● | ● | ● |
| Mini Spare Wheel | ○ | ○ | ○ | ○ | ○ | ○ | ○ | ○ |

Exterior equipment

| | Studio | Edge | Zetec | Titanium | Grand Prix | Digital | Tattoo | Tattoo Premium |
|---------------------------------------------------------------------------------------------------------------------------------------------------------------------------------------------------------------------------------------------------|--------|------|-------|----------|------------|---------|--------|----------------|
| Exterior Bodystyling features | | | | | | | | |
| Individual 'Grand Prix' - 16" alloy wheels, rear spoiler, exterior adhesive foils in red or white, unique front bumper grille and coloured surround in Piste or Sunrise, unique mirror cappings in Piste or Sunrise, chrome exhaust pipe finisher | - | - | - | - | ● | - | - | - |
| Individual 'Digital' - 16" alloy wheels, exterior adhesive foils in Digital design, unique front bumper grille and coloured surround in Jump, mirror capings in Jump, chrome exhaust pipe finisher | - | - | - | - | - | ● | - | - |
| Individual 'Tattoo' - 16" alloy wheels chrome exhaust pipe finisher, chrome door and tailgate handles, Tattoo exterior adhesive foils | - | - | - | - | - | - | ● | ● |
| Convenience features | | | | | | | | |
| Parking Distance Sensor – Rear | ○ | ○ | ○ | ○ | ○ | ○ | ○ | ○ |
| Wipers – Front aero blades, with speed dependent variable intermittent and anti-drip function | ● | ● | ● | ● | ● | ● | ● | ● |
| Wipers – Rear, wash/wipe includes reverse gear wipe | ● | ● | ● | ● | ● | ● | ● | ● |
| Windscreen – Heated, with heated washer jets | - | - | ● | ● | ● | ● | ● | ● |
| Front towing hook | ● | ● | ● | ● | ● | ● | ● | ● |
| Lights | | | | | | | | |
| Centre high-mounted stop light | ● | ● | ● | ● | ● | ● | ● | ● |
| Headlight – Single chamber halogen headlight | ● | ● | ● | ● | ● | ● | ● | ● |
| Headlight – Courtesy delay feature | ● | ● | ● | ● | ● | ● | ● | ● |
| Headlight – Manual headlight control | ● | ● | ● | ● | ● | ● | ● | ● |
| Headlight – Levelling | ● | ● | ● | ● | ● | ● | ● | ● |

● = Standard ○ = Option at extra cost, □ = Part of an option pack, at extra cost.

Interior equipment

| | Studio | Edge | Zetec | Titanium | Grand Prix | Digital | Tattoo | Tattoo Premium |
|----------------------------------------------------------------------------------------------------------------------------------------------|--------|------|-------|----------|------------|---------|--------|----------------|
| Front seat map pockets – Driver and passenger | – | ● | ● | ● | ● | ● | ● | ● |
| Passenger seat – Manual 2-way adjust | ● | ● | ● | ● | ● | ● | ● | ● |
| Passenger seat – Tipping seat with easy entry | ● | ● | ● | ● | ● | ● | ● | ● |
| Heated front seats (standard with leather seats) | – | – | – | □ | – | – | – | ● |
| Rear seat – One-piece foldable bench seat | ● | – | – | – | – | – | – | – |
| Rear seat – 50:50 split rear seat | – | ● | ● | ● | ● | ● | ● | ● |
| Rear seat – Head restraints | ● | ● | ● | ● | ● | ● | ● | ● |
| Rear seat – ISOFIX mounts | ● | ● | ● | ● | ● | ● | ● | ● |
| Leather Pack - Choice of either Florida or Syracuse Leather trim, heated front seats, Pearl White gearshift knob, and unique handbrake cover | – | – | – | ○ | – | – | – | – |

Loadspace

| | | | | | | | | |
|------------------------|---|---|---|---|---|---|---|---|
| Removable parcel shelf | ● | ● | ● | ● | ● | ● | ● | ● |
| Load floor carpet | ● | ● | ● | ● | ● | ● | ● | ● |

● = Standard, ○ = Optional, at extra cost, □ = Part of an option pack, at extra cost. The Bluetooth® word mark and logos are owned by the Bluetooth SIG, Inc. and any use of such marks by Ford Motor Company is under licence. Other trademarks and trade names are those of their respective owners.

Safety and security

| | Studio | Edge | Zetec | Titanium | Grand Prix | Digital | Tattoo | Tattoo Premium |
|---------------------------------------------------------------------------------------------------------|--------|------|-------|----------|------------|---------|--------|----------------|
| Safety | | | | | | | | |
| Anti-lock brakes (ABS) with electronic brake-force distribution (EBD) and mechanical brake assist (MBA) | ● | ● | ● | ● | ● | ● | ● | ● |
| Electronic Stability Programme (ESP), includes Hydraulic Brake Assist (HBA) and Hill Start Assist | ○ | ○ | ○ | ○ | ○ | ○ | ○ | ○ |
| Hazard Warning Lights – Automatic activation of all turn indicators when emergency braking is applied | ● | ● | ● | ● | ● | ● | ● | ● |
| Airbags – Driver's and front passenger's single stage* | ● | ● | ● | ● | ● | ● | ● | ● |
| Airbags – Curtain airbag (includes side airbag pack Pelvis and Thorax) | ○ | ○ | ○ | ○ | ○ | ○ | ○ | ○ |
| Airbag – Front passenger's airbag de-activation switch (requires Dealer activation)* | ● | ● | ● | ● | ● | ● | ● | ● |
| Front seat belt double pre-tensioners | ● | ● | ● | ● | ● | ● | ● | ● |
| Rear 3-point seat belt in all positions | ● | ● | ● | ● | ● | ● | ● | ● |
| Maximum speed pre-selection function | ● | ● | ● | ● | ● | ● | ● | ● |
| Security | | | | | | | | |
| Manual locking | ● | – | – | – | – | – | – | – |
| Remote control central single locking with key fob (retractable) and tailgate button | – | ● | ● | ● | ● | ● | ● | ● |
| Engine immobiliser | ● | ● | ● | ● | ● | ● | ● | ● |

● = Standard, ○ = Optional, at extra cost. *Note: A child seat should never be placed in the front passenger seat, when the Ford vehicle is equipped with an operational front passenger's airbag. The safest place for children is properly restrained on the rear seat.

Mechanical features

| | Studio | Edge | Zetec | Titanium | Grand Prix | Digital | Tattoo | Tattoo Premium |
|-----------------------------------------------------------------------------------------|--------|------|-------|----------|------------|---------|--------|----------------|
| Steering | | | | | | | | |
| Electric power-assisted steering (EPAS) | ● | ● | ● | ● | ● | ● | ● | ● |
| Suspension | | | | | | | | |
| Front – Independent with MacPherson struts, and subframe-mounted 'L' arm. Anti-roll bar | ● | ● | ● | ● | ● | ● | ● | ● |
| Rear – Twist-beam with coil springs plus additional anti-roll bar | ● | ● | ● | ● | ● | ● | ● | ● |
| Technology | | | | | | | | |
| Ford Auto-Start-Stop* | ● | ● | ● | ● | ● | ● | ● | ● |

● = Standard * = Available with Stage V engines only

Fuel, performance and emissions

| | Transmission | Max. Power PS (kW) | Torque Nm (Nm with Overboost) | CO ₂ Emissions (g/km) ⁹⁰ | Fuel Consumption L/100 km (mpg) ⁹⁰ | | | Performance ⁹⁰ | | | Gross Vehicle Mass (kg) |
|---------------|--------------|--------------------|-------------------------------|------------------------------------------------|-----------------------------------------------|-------------|------------|---------------------------|-----------------|-------------------|-------------------------|
| | | | | | Urban | Extra Urban | Combined | Max. speed mph | 0-62 mph (secs) | 31-62 mph* (secs) | |
| 3-door | | | | | | | | | | | |
| 1.2 Duratec | M5 | 69 | 102 | 115 | 5.8 (48.7) | 4.4 (64.2) | 4.9 (57.7) | 99 | 12.7 | 15.6 | 1320 |
| 1.3 Duratorq | M5 | 75 | 145 | 109 | 4.9 (57.7) | 3.7 (76.4) | 4.1 (68.9) | 100 | 12.7 | 12.7 | 1415 |

*In 4th gear. ⁹⁰Ford test figures. ⁹⁰All CO₂ emissions figures in g/km and fuel consumption figures in L/100 km are from officially approved tests in accordance with EEC Directive 1999/100/EC. The CO₂ emissions and fuel consumption test figures shown in the chart do not express or imply any guarantee of the emissions or fuel consumption of a car of the class in question. All the figures are based on tests conducted on vehicles with standard wheels and tyres; optional or accessory wheels and tyres may have an effect on the emissions and fuel consumption of a vehicle. **Note:** All vehicles are Durashift 5-speed manual. ¹The fuel economy data published above relate to use of petrol 95 RON; use of alcohol fuel or a mixture of petrol and alcohol will lead to other fuel economy data. BP Ultimate, a range of advanced performance fuels, the perfect partner to meet the most demanding needs of Ford's class-leading technology. BP Ultimate can boost power and acceleration, lower exhaust emissions and improve fuel economy, compared with ordinary fuels.

Dimensions

| | |
|---------------------------------------------|-----------|
| Overall length (mm) | 3620 |
| Overall width with/without mirrors (mm) | 1894/1658 |
| Overall width with folded back mirrors (mm) | 1702.7 |
| Overall height (unladen) (mm) | 1505 |
| Turning circle – Kerb to kerb (m) | 9.8 |
| Luggage capacity (litres)* | |
| 4-seat mode | 224 |
| 2-seat mode (laden to roof) | 747 |
| Fuel tank capacity (litres) | |
| Petrol | 35 |
| Diesel | 35 |

*Measured in accordance with ISO 3832. Dimensions may vary dependent on the model and equipment fitted.

Exterior colours

Solid colours



Crystal



Sunrise

Metallic colours*



Scuba



Moonlight



Strobe



Dive



Midnight

Special metallic colours*



Piste



Blush

*Optional at extra cost.

The Ford Ka is covered by the Ford Perforation Warranty for 8 years from the date of first registration. Subject to terms and conditions.

Note The car images used are to illustrate body colours only and may not reflect current specification. Colours and trims reproduced within this brochure may vary from the actual colours, due to the limitations of the printing processes used.

Colour and trim



Fabric in Fairland / Syracuse (Studio and Edge)

Fabric in Turquoise / Florida (Edge)

Fabric in Fairland / Syracuse (Zetec and Titanium)

Fabric in Coral / Syracuse (Zetec and Titanium)

Fabric in Turquoise / Florida (Zetec and Titanium)

Leather in Syracuse** (Titanium)

Leather in Florida** (Titanium)

Fabric in White / Red** (Grand Prix Individual Interior)

Fabric in Digital / Fairland** (Digital Individual Interior)

Fabric in Argent / Syracuse** (Tattoo)

Leather in Perlato / Syracuse** (Tattoo Premium Interior)

Colour and trim

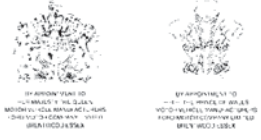
| Model | Studio | | Edge | | Zetec | | | Titanium | | | Grand Prix | Digital | Tattoo | Tattoo Premium | | |
|----------------------------------------------------|----------------------|---------------------|----------------------|------------------------|---------------------|---------------------|------------------------|---------------------|---------------------|------------------------|----------------------------|---------------------------|---------------|----------------------|----------------------------|---------------------------|
| | Abstract in Fairland | China White | Abstract in Fairland | Abstract in Coral | Track in Fairland | Track in Coral | Track in Turquoise | Track in Fairland | Track in Coral | Track in Turquoise | | | | | Leather in Syracuse Pearl* | Leather in Florida Pearl* |
| Seat insert pattern and colour | Abstract in Fairland | China White | Abstract in Fairland | Abstract in Coral | Track in Fairland | Track in Coral | Track in Turquoise | Track in Fairland | Track in Coral | Track in Turquoise | Leather in Syracuse Pearl* | Leather in Florida Pearl* | Lily in White | Abstract in Digital* | Lily in Argent | Leather in Perlato |
| Centre stack bezels / Door pull grab handle | China White | China White | China White | China White | Pearl White | Pearl White | Peal White | Pearl White | Pearl White | Pearl White | Pearl White | Pearl White | Pearl White | Jump | Pearl White | Pearl White |
| Feature colour / Environment colour | Syracuse / Fairland | Syracuse / Fairland | Syracuse / Fairland | Dark Florida / Florida | Syracuse / Fairland | Syracuse / Fairland | Dark Florida / Florida | Syracuse / Fairland | Syracuse / Fairland | Dark Florida / Florida | Syracuse / Fairland | Dark Florida / Florida | Grand Prix | Digital | Tattoo | Tattoo Leather |
| Solid body colours | | | | | | | | | | | | | | | | |
| Crystal | ● | ● | - | - | ● | - | - | ● | - | - | ○ | - | ● | ● | ● | ● |
| Sunrise | ● | - | ● | - | - | ● | - | - | ● | - | ○ | - | ● | - | ● | ● |
| Metallic body colours | | | | | | | | | | | | | | | | |
| Dive | ○ | ○ | - | ○ | ○ | - | ○ | ○ | - | ○ | ○ | ○ | - | - | ○ | ○ |
| Moonlight | ○ | ○ | - | - | ○ | ○ | - | ○ | ○ | - | ○ | - | - | ○ | ○ | ○ |
| Midnight | ○ | ○ | ○ | - | ○ | ○ | - | ○ | ○ | - | ○ | - | - | ○ | ○ | ○ |
| Scuba | ○ | ○ | - | ○ | ○ | - | ○ | ○ | - | ○ | ○ | ○ | - | - | ○ | ○ |
| Strobe | ○ | ○ | - | - | ○ | - | - | ○ | - | - | ○ | - | - | ○ | ○ | ○ |
| Special metallic colours | | | | | | | | | | | | | | | | |
| Piste | - | - | - | - | ○ | ○ | - | ○ | ○ | - | ○ | - | ○ | ○ | ○ | ○ |
| Blush | - | - | - | - | ○ | - | - | ○ | - | - | ○ | ○ | - | - | ○ | ○ |

● = Available, ○ = Option at extra cost, - = Not available.



Illustrations, descriptions and specifications. This brochure was correct at the time of going to print. However, Ford policy is one of continuous product development. The right is reserved to change specifications, colours and prices of the models and items illustrated and described in this publication at any time. For the latest details always consult your Ford Dealer. **Optional equipment.** Throughout this publication, wherever a feature is described as being an 'Option' or 'Optional Fitment/Pack', etc., you should assume that it will be at extra cost to the base vehicle, unless specifically stated to the contrary. All models and colour combinations are subject to availability. **Note.** Some images portrayed are of a pre-production model and/or are computer generated, therefore, the design/features on the final version of the vehicle may differ in various respects. In addition, some of the features shown on the vehicles may be optional. **Note.** This brochure contains both original Ford accessories as well as a range of carefully selected products from our suppliers, which are featured under their own brands. All supplier branded products are subject to warranty terms defined by the relevant suppliers and do not lie within the responsibility of Ford. **Note.** The Bluetooth® word mark and logos are owned by the Bluetooth SIG, Inc. and any use of such marks by Ford Motor Company is under licence. Other trademarks and trade names are those of their respective owners.

The Government fuel figures do not express or imply any guarantee of the fuel consumption of any particular car. The cars themselves have not been tested and there are inevitably differences between individual cars of the same model. In addition, a car may incorporate particular modifications. Furthermore, the driver's style and road and traffic conditions, as well as the extent to which the car has been driven and the standard of maintenance, will affect its fuel consumption. **Insurance groups** are only as recommended by the Association of British Insurers. You should always consult your insurance adviser for confirmation.



Collect Nectar points at participating Ford Dealers and Authorised Repairers now. So take a look at the latest Ford Service Promotions by visiting the Owner Services section within www.ford.co.uk.



Ford and BP – working together to reduce fuel consumption and emissions.

Published by Ford Motor Company Limited, Brentwood, Essex, England. Registered in England No. 235446. **FA 1537/4**

BJN 306955. FoE H43E. PN 073502/0710/52m/GBR en July 2010.

© Ford Motor Company Limited.

www.ford.co.uk

