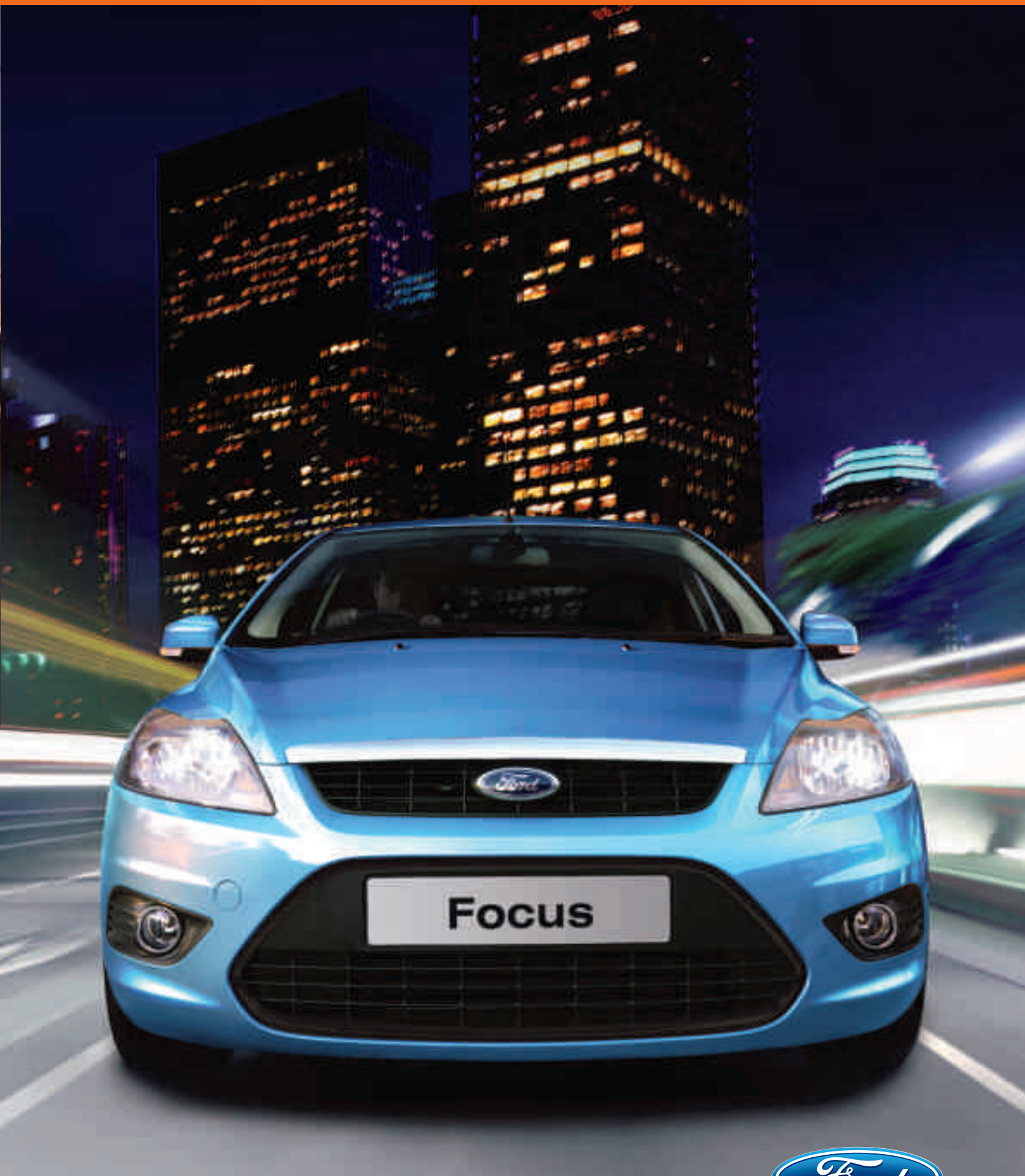


FORD FOCUS



Feel the difference

Refreshing air conditioning, eye-catching steering wheel and a sporty instrument cluster – just some of the cool interior highlights to be found on Style.

Style



Move on up with the Ford Focus Style. With its athletic stance and dynamic performance, this is a car that can't help attracting attention.

Features

- 16" 5-spoke 'Design' wheels
- Electrically-operated and heated door mirrors with side indicators and body colour housings
- Electrically-operated driver and front passenger windows
- Stereo radio/CD
- Remote control central locking
- Ford Intelligent Protection System (IPS)*, including driver and front passenger's airbags*, side airbags and side curtain airbags
- Electronic Stability Programme (ESP)
- Anti-lock braking system (ABS) with electronic brake-force distribution (EBD)
- Independent Control Blade multi-link rear suspension
- Ford Easy Fuel capless refuelling system
- Air conditioning
- Silver-effect steering wheel accents
- Trip/fuel computer
- Sporty instrument cluster design with satin aluminium-finish trim rings
- Aluminium-finish interior door handles and handbrake release button
- Perimeter Alarm

*Note: A child seat should never be placed on the front passenger seat when the Ford vehicle is equipped with an operational front passenger's airbag. The safest place for children is properly restrained on the rear seat.

Model shown above is finished in Ink Blue metallic paint. (Option)

Instrument cluster

New design is both sporty and easy to read.

Design wheels

Stylish 16" 5-spoke 'Design' wheels.

Ford Easy-Fuel

Ingenious capless refuelling system can tell the difference between petrol and diesel fuel pump nozzles, only accepting the correct type of nozzle for your car.

Electrically-operated and heated door mirrors with body colour housings

Aluminium-finish interior door handles

Body colour door handles



Sport

Ford Focus Sport's automatic headlights, auto-dimming rear-view mirror and autowipers with rain sensor help you enjoy your driving without distractions from the road ahead.



Ford Focus Sport doesn't just look amazing. It's also packed with high-tech convenience features – from satnav to voice control – to make your journey even quicker and safer.

Additional to Style

- Advanced SD navigation system with full European mapping
- Body colour rear spoiler
- Front fog lights
- Driver's seat lumbar adjust
- Rear parking distance sensors
- 16" 5-spoke "Y" design alloy wheels
- Bluetooth® USB port and Voice Control System
- Quickclear heated windscreen
- Automatic headlights
- Auto-dimming rear-view mirror
- Rain sensing wipers

Model shown above is finished in Panther Black metallic paint. (Option)

Note The Bluetooth® word mark and logos are owned by the Bluetooth SIG, Inc. and any use of such marks by Ford Motor Company Limited and its associated companies is under licence. Other trademarks and trade names are those of their respective owners.

Alloy wheels

Stunning 16" 5-spoke "Y" finish alloy wheels. (Standard)

Rear parking distance sensors

Helps you safely judge the distance between the rear of your car and an obstacle. (Standard)

Advanced SD navigation system

Features a 5" colour map display, turn-by-turn directions and 7-digit postcode entry. With full European mapping. (Standard)

USB port

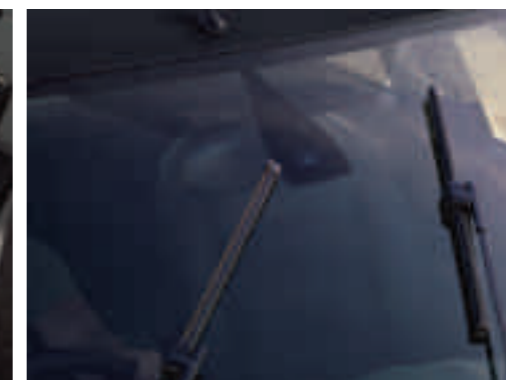
Connect your iPod® or MP3 player and operate it via the advanced SD navigation system. (Standard)

Autowipers with rain sensor

Switch on automatically if it starts to rain. Can also be adjusted for sensitivity. (Standard)

Auto-dimming rear-view mirror

Helps take the glare away from reflected lights. (Standard)



Exterior equipment

| | Style | Sport |
|---|-------|-------|
| Design features | | |
| Door mirrors – Body colour housing, heated, electric operation, integrated side indicator | ● | ● |
| Halogen headlights with silver effect surrounds | ● | ● |
| Front fog lights | - | ● |
| Rear spoiler – Black (5-door only) | ● | - |
| Rear spoiler – Body colour (small) | - | ● |
| Detachable towbar | ○ | - |
| Wheels | | |
| Design Steel – 16"x6½", 5-spoke wheel covers, 205/55 tyres | ● | - |
| Alloy – 16" 5-spoke "Y" Design Alloy Wheel, 205/55 tyres | - | ● |
| Spare – Mini steel | ● | ● |
| Spare – Full-size steel | ○ | ○ |
| Locking wheel nuts (only where alloy wheels are fitted) | ● | ● |
| Convenience features | | |
| Ford Easy Fuel capless refuelling system | ● | ● |
| Headlights – Automatic on/off | - | ● |
| Parking distance sensors – Rear | ○ | ● |
| Tailgate wash/wipe | ● | ● |
| Wipers – Standard with 6-speed interval settings | ● | - |
| Wipers – Automatic with rain sensor | - | ● |
| Quickclear Heated Windshield with heated washer jets | ○ | ● |

● = Standard, ○ = Optional, at extra cost.

Interior equipment

| | Style | Sport |
|--|-------|-------|
| Design features | | |
| Door lever – Aluminium finish | ● | ● |
| Steering wheel – 4-spoke with silver accents | ● | - |
| Steering wheel – 3-spoke, leather-trimmed with silver accents | - | ● |
| Steering column – Reach and rake adjustable | ● | ● |
| Audio and communication systems | | |
| Ford 6000 Radio/CD – Six speakers | ● | - |
| Remote audio controls | ● | ● |
| Portable Music Connection Socket | ● | ● |
| Bluetooth® Hands Free Phone and Voice Control System (Ford 6000 Radio/CD) | ○ | - |
| Communications Pack – Advanced SD navigation system with radio/CD -5" colour display, six speakers, navigation data on SD memory card) | ○ | ● |
| Bluetooth® Hands Free, Voice Control System and USB music connectivity port | | |
| Climate control | | |
| Air conditioning – Manual control | ● | ● |
| Convenience features | | |
| Accessory power socket (12V) | ● | ● |
| Smoker's Pack (Cigar lighter with 12V power socket and ashtray) | ○ | - |
| Centre console – Regular, with open stowage bins | ● | - |
| Centre console – Premium, with sliding armrest, 12V power socket and large stowage bin | - | ●+ |
| Courtesy light – For front passengers, overhead with theatre-style dimming, and in load compartment | ● | ● |
| Rear-view mirror – Auto-dimming | - | ● |
| Stowage pockets – Front seat backs | ● | ● |
| Windows – Electrically operated front with one-touch lowering on driver's side | ● | ● |
| Seats and seat belts | | |
| Front seats – Comfort-style | ● | - |
| Front seats – Sports-style (with driver's manual lumbar support adjustment) | - | ● |
| Front seat – Driver's manual height and fore/aft adjustment | ● | ● |
| Front seat – Passenger's manual fore/aft adjustment | ● | ● |
| Rear seat – 60/40 split back and cushion | ● | ● |
| Seat Belts – Front, inertia reel with height adjustable mounts. Rear – three inertia reel lap and diagonal | ● | ● |
| Loadspace | | |
| Tie-down hooks | ● | ● |

● = Standard, ○ = Optional, at extra cost, □ = Part of an option pack, at extra cost, ●+ = Introduced as a running change during November, earlier models fitted with regular centre console

The Bluetooth® word mark and logos are owned by the Bluetooth SIG, Inc. and any use of such marks by Ford Motor Company is under licence. Other trademarks and trade names are those of their respective owners.

Safety and security

| | Style | Sport |
|---|-------|-------|
| Safety | | |
| Intelligent Protection System (IPS) | ● | ● |
| Anti-lock Braking System (ABS) with electronic brake-force distribution (EBD) | ● | ● |
| Electronic Stability Programme (ESP) with Traction Assist and Emergency Brake Assist (EBA) | ● | ● |
| Auto Hazard Warning Lights – Automatic activation of all turn indicators when emergency braking is applied | ● | ● |
| Airbags – Driver and front passenger* | ● | ● |
| Airbags – Front side impact | ● | ● |
| Airbags – Front and rear curtain | ● | ● |
| Seats – ISOFIX mounting brackets for child seat (free bracket when factory ordered. To be fitted by dealer, which may incur extra charge) | ○ | ○ |
| Seat Belts – Seat buckle pre-tensioners on front seat belts | ● | ● |
| Deflation Detection System (DDS) | ○ | - |
| Security | | |
| Remote central double locking | ● | ● |
| Perimeter alarm (includes courtesy delay headlights and 2nd remote key) | ● | ● |

● = Standard, ○ = Optional, must be specified at time of order.

***Note: A child seat should never be placed in the front passenger seat when the Ford vehicle is equipped with an operational front passenger's airbag. The safest place for children is properly restrained on the rear seat**

Mechanical features

| | Style | Sport |
|--|-------|-------|
| Suspension and brakes | | |
| Front – Independent with MacPherson struts and anti-roll bar | ● | ● |
| Rear – Independent Control Blade multi-link system and anti-roll bar | ● | ● |
| Front brakes – Ventilated discs | ● | ● |
| Rear brakes – Drums | ● | ● |

● = Standard, ○ = Optional, at extra cost, □ = Part of an option pack, at extra cost.

Fuel and performance

| Key data | Trans | Maximum power PS (kW) | Torque Nm (Nm with overboost) | CO ₂ emissions (g/km)** | Fuel consumption in L/100 km (mpg)** | | | Performance* | | |
|-----------------------|-------|-----------------------|-------------------------------|------------------------------------|--------------------------------------|-------------|------------|------------------|-----------------|-------------------|
| | | | | | Urban | Extra Urban | Combined | Max. speed (mph) | 0-62 mph (secs) | 31-62 mph* (secs) |
| 5-door Focus | | | | | | | | | | |
| 1.6 Duratec | M5 | 100 (74) | 150 | 159 | 8.7 (32.5) | 5.5 (51.4) | 6.7 (42.2) | 112 | 11.9 | 13.3 |
| 1.6 Duratec | A4 | 100 (74) | 150 | 184 | 10.6 (26.7) | 6.0 (47.1) | 7.7 (36.7) | 107 | 13.6 | n/a |
| 1.6 Duratorq TDCi DPF | M5 | 90 (66) | 215 | 115 | 5.6 (50.4) | 3.7 (76.4) | 4.4 (64.2) | 110 | 12.6 | 12.7 |
| 1.6 Duratorq TDCi DPF | M5 | 109 (80) | 240 (260) | 115 | 5.6 (50.4) | 3.7 (76.4) | 4.4 (64.2) | 117 | 10.9 | 10.9 |

*In 4th gear. **Ford test figures. **All CO₂ emissions figures in g/km and fuel consumption figures in L/100 km are tested in accordance with 80/1268/EEC as amended. The CO₂ emissions and fuel consumption test figures shown in the chart do not express or imply any guarantee of the fuel consumption of a car of the class in question. All the figures are based on tests conducted on vehicles with Core equipment level and with standard wheels and tyres; optional or accessory wheels and tyres may have an effect on the emissions and fuel consumption of a vehicle. **Note** All vehicles are 5-speed manual unless stated. **DPF** = Diesel Particulate Filter. All petrol engines are equipped with a catalytic converter. Except where otherwise stated, all engines are Emissions Stage V. Towing limits quoted represent the maximum towing ability of the vehicle at its Gross Vehicle Mass to restart on a 12 per cent gradient at sea level. The performance and economy of all models will be reduced when used for towing. M5 = 5-speed manual, A4 = 4-speed auto.

Insurance groups

| | Style | Sport |
|---|-------|-------|
| 5-door Focus | | |
| 1.6 Duratec Petrol (100 PS) | 10E | 10E |
| 1.6 Duratec Petrol (100 PS), Durashift 4-speed auto | 10E | 10E |
| 1.6 Duratorq TDCi Diesel (90 PS) (DPF) | 14E | |
| 1.6 Duratorq TDCi Diesel (109 PS) (DPF) | 14E | 15E |

E = Exceeds security requirement for model concerned and group rating has been reduced.

Weights and loads

| | Minimum Kerbweight (kg)* 5dr | Gross Vehicle Mass (kg) 5dr | Gross Train Mass (kg) 5dr | Max. Towable Mass (braked) (kg) | Max. Towable Mass (unbraked) (kg) 5dr |
|-------------------------------------|------------------------------|-----------------------------|---------------------------|---------------------------------|---------------------------------------|
| 1.6 Duratec | 1249 | 1820 | 2930 | 1200 | 620 |
| 1.6 Duratec, Durashift 4-speed auto | 1286 | 1835 | 2555 | 800 | 640 |
| 1.6 Duratorq TDCi (90 PS) | 1357 | 1880 | 2990 | 1200 | 675 |
| 1.6 Duratorq TDCi (109 PS) | 1357 | 1880 | 3095 | 1300 | 675 |

*Represents the lightest kerbweight assuming driver at 75 kg, full fluid levels and 90% fuel levels, subject to manufacturing tolerances and options fitted. **Towing limits** quoted represent the maximum towing ability of the vehicle at its Gross Vehicle Mass to restart on a 12 per cent gradient at sea level. The performance and economy of all models will be reduced when used for towing. **Nose weight limit** is a maximum of 75 kg on all models. **Gross Train Mass** includes trailer weight. **Note** All vehicles are 5-speed manual, unless otherwise stated. For further guidance, refer to the National Caravan Council's Towing Guide.

Dimensions

| | 5-door |
|--|-----------|
| Overall length (mm) | 4337 |
| Overall width with/without mirrors (mm) | 2020/1839 |
| Overall width with folded back mirrors (mm) | 1879 |
| Overall height without/with roof carrier system (unladen) (mm) | 1497/– |
| Turning circle – kerb to kerb (m) | 10.40 |
| Luggage capacity (litres)* | |
| 5-seat mode (with tyre repair kit) | 396 |
| 5-seat mode (with mini spare) | 385 |
| 5-seat mode (with full-size spare) | 282 |
| 2-seat mode (with tyre repair kit) | 1258 |
| 2-seat mode (with mini spare) | 1247 |
| 2-seat mode (with full-size spare) | 1144 |
| Fuel tank capacity (litres) | |
| Petrol | 55 |
| Diesel | 53 |

*Measured in accordance with ISO 3832. Dimensions may vary dependent on the model and equipment fitted.

Colour and trim



Choosing the colour for your Ford Focus is a lovely dilemma. So explore the palette of bold solid colours and great metallics and discover what is right for you.



Frozen White
Solid



Colorado Red
Solid



Sea Grey
Metallic*



Panther Black
Metallic*



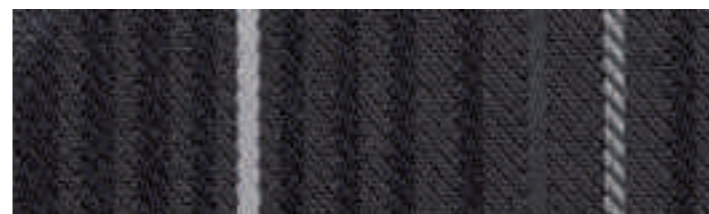
Moondust Silver
Metallic*



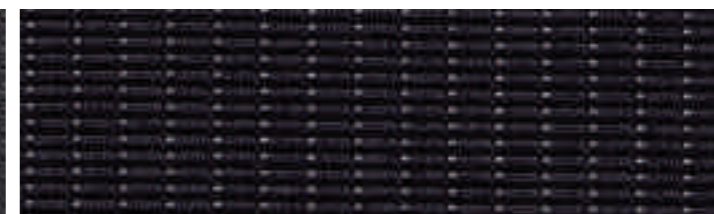
Ink Blue
Metallic*



Vision
Metallic*



Ecrin in Generic Silver seat facing
Mondus in Ebony seat sides



New York in Ebony seat facing
Lux in Ebony seat sides

*Metallic body colours are options at extra cost. The Ford Focus is covered by the Ford Perforation Warranty for 12 years from the date of first registration. Subject to terms and conditions.
Note The car images used are to illustrate body colours only and may not reflect current specification. Colours and trims reproduced within this brochure may vary from the actual colours, due to the limitations of the printing processes used.



MY 2011.5 GBR en

Illustrations, descriptions and specifications. This brochure was correct at the time of going to print. However, Ford policy is one of continuous product development. The right is reserved to change specifications, colours and prices of the models and items illustrated and described in this publication at any time. For the latest details always consult your Ford Dealer. **Optional equipment.** Throughout this publication, wherever a feature is described as being an 'Option' or 'Optional Fitment/Pack', etc., you should assume that it will be at extra cost to the base vehicle, unless specifically stated to the contrary. All models and colour combinations are subject to availability. **Note.** Some images portrayed are of a pre-production model and/or are computer generated, therefore, the design/features on the final version of the vehicle may differ in various respects. In addition, some of the features shown on the vehicles may be optional. **Note.** This brochure contains both original Ford accessories as well as a range of carefully selected products from our suppliers, which are featured under their own brands. All supplier branded products are subject to warranty terms defined by the relevant suppliers and do not lie within the responsibility of Ford. **Note.** The Bluetooth® word mark and logos are owned by the Bluetooth SIG, Inc. and any use of such marks by Ford Motor Company is under licence. Other trademarks and trade names are those of their respective owners.

The Government fuel figures do not express or imply any guarantee of the fuel consumption of any particular car. The cars themselves have not been tested and there are inevitably differences between individual cars of the same model. In addition, a car may incorporate particular modifications. Furthermore, the driver's style and road and traffic conditions, as well as the extent to which the car has been driven and the standard of maintenance, will affect its fuel consumption. **Insurance groups** are only as recommended by the Association of British Insurers. You should always consult your insurance adviser for confirmation.



Ford and BP – working together to reduce fuel consumption and emissions.



Collect Nectar points at participating Ford Dealers and Authorised Repairers now. So take a look at the latest Ford Service Promotions by visiting the Owner Services section within www.ford.co.uk.



When you have finished with this brochure please recycle it.



Published by Ford Motor Company Limited, Brentwood, Essex, England. Registered in England No. 235446. FA 1567. BJN 307800. FoE HK08. PN 072505/0411/30m/GBR en. April 2011. © Ford Motor Company Limited.

www.ford.co.uk