



MY 2012 GBR en

Illustrations, descriptions and specifications. This brochure was correct at the time of going to print. However, Ford policy is one of continuous product development. The right is reserved to change specifications, colours and prices of the models and items illustrated and described in this publication at any time. For the latest details always consult your Ford Dealer. **Optional equipment.** Throughout this publication, wherever a feature is described as being an 'Option' or 'Optional Fitment/Pack', etc., you should assume that it will be at extra cost to the base vehicle, unless specifically stated to the contrary. All models and colour combinations are subject to availability. **Note.** Some images portrayed are of a pre-production model and/or are computer generated, therefore, the design/features on the final version of the vehicle may differ in various respects. In addition, some of the features shown on the vehicles may be optional. **Note.** This brochure contains both original Ford accessories as well as a range of carefully selected products from our suppliers, which are featured under their own brands. All supplier branded products are subject to warranty terms defined by the relevant suppliers and do not lie within the responsibility of Ford. **Note.** The Bluetooth® word mark and logos are owned by the Bluetooth SIG, Inc. and any use of such marks by Ford Motor Company is under licence. Other trademarks and trade names are those of their respective owners.

The Government fuel figures do not express or imply any guarantee of the fuel consumption of any particular car. The cars themselves have not been tested and there are inevitably differences between individual cars of the same model. In addition, a car may incorporate particular modifications. Furthermore, the driver's style and road and traffic conditions, as well as the extent to which the car has been driven and the standard of maintenance, will affect its fuel consumption. **Insurance groups** are only as recommended by the Association of British Insurers. You should always consult your insurance adviser for confirmation.



Allergy-tested interior All materials used in the manufacture of the interior of this vehicle meet the strict requirements of the TÜV TOXPROOF Criteria Catalogue for Vehicle Interiors by the TÜV Produkt und Umwelt GmbH and are designed to minimise the risk of allergic reactions. With doors and windows closed, the interior materials selected – together with the integrated pollen filter – protect the passengers against most allergising particles from the outdoor air. At higher temperatures, the additional use of air conditioning is recommended.



Ford and BP – working together to reduce fuel consumption and emissions.



Collect Nectar points at participating Ford Dealers and Authorised Repairers now. So take a look at the latest Ford Service Promotions by visiting the Owner Services section within www.ford.co.uk.



BE SUPPLYMENT TO
FOR MOTOR COMPANY LIMITED
BREWWOOD ESSEX



BE SUPPLEMENT TO
H.R. THE PRINCE OF WALES
BREWWOOD ESSEX

Published by Ford Motor Company Limited,
Brentwood, Essex, England.
Registered in England No. 235446.
FA 1550/5
BJN 307961. FoE H46E.
PN 177513/0711/12m/GBR en
August 2011.
© Ford Motor Company Limited.

www.ford.co.uk



Feel the difference



Fiesta Van finished in Mars Red metallic paint. (Option)

Streets ahead

The stylish Ford Fiesta Van now comes with Euro Stage V emissions-compliant engines. Offering class-leading CO₂ emissions, improved fuel economy and the lowest possible running costs, it's the smartest choice for businesses on the move.



Fiesta Van ECOnetic

Fiesta Van ECOnetic and Fiesta Van models shown are finished in Midnight Sky metallic paint (left) and Moondust Silver (right) metallic paint. (Option)



Full-height bulkhead – lower composite, upper steel mesh (option)
Cargo tie-down rings are also shown. (Standard)



Care for your customers and the environment with the Fiesta Van ECOnetic. Its specially-tuned 95PS Euro Stage V diesel engine, improved aerodynamics and low rolling resistance tyres offer class-leading CO₂ emissions with reduced fuel economy to help keep business costs down without compromising on style or performance.

ECOnetic features

- 1.6-litre Duratorq TDCi 95 PS Euro Stage V engine now delivers more power, and an amazing fuel consumption of just 78.5 mpg combined cycle and CO₂ emissions of 95g/km
- Body colour front and rear bumpers, door handles, tailgate handle and rear spoiler
- Lowered suspension
- 14" wheels with 6-spoke covers and 175/65 low rolling resistance tyres
- Ford Easy Fuel capless refuelling system
- CD/radio with MP3 compatibility, remote toggle controls and AUX socket

Gross payload 493 kg

Loadspace features

- 1.0 cu.m loadspace*
- 1296 mm load length
- Half-height horizontal bulkhead
- Full-height DIN-compliant bulkhead (option)
- 4 DIN-compliant cargo tie-down rings
- Full load floor rubber mat

Fiesta Van



Concealed beneath its striking 'Ford Kinetic Design' lines, the Ford Fiesta Van offers a spacious, high-quality interior and a versatile 1.0 cu.m loadspace, plus the outstanding driving experience you would expect from Ford.

Van features

- 2 engine options with Euro Stage V emission compliance: 1.25 Duratec 82 PS petrol or 1.4 Duratorq TDCi 70 PS (diesel engines now have a maintenance-free coated Diesel Particulate Filter (cDPF)), optimised for low cost of ownership
- Body colour rear roof spoiler
- Electrically-operated door mirrors with integral indicators
- Stereo radio/CD, MP3 compatible, AUX connector, 4 front speakers and steering wheel-mounted remote controls
- Steering column adjustable for reach and rake
- Electric Power-Assisted Steering (EPAS)
- Ford Intelligent Protection System (IPS), including driver's and front passenger's airbags*
- Side Airbags – head and thorax, includes active head restraint and driver's knee airbag (option)
- Anti-lock braking system (ABS) with electronic brake-force distribution (EBD)
- Electronic Stability Programme (ESP) with Traction Assist (TA) and Emergency Brake Assist (EBA) (option)

Gross payload 507-513 kg (depending on engine)



Ford Easy Fuel
Keeps hands clean at the pump and prevents accidental filling with the wrong fuel (standard).



*Note: A child seat should never be placed on the front passenger seat when the Ford vehicle is equipped with an operational front passenger's airbag.

*Measured using the VDA method and measured in cubic metres. Any additional options specified on the vehicle will reduce the payload accordingly. Kerb masses are subject to manufacturing tolerances and are for Base models with minimum equipment.

Fiesta Van Trend

Fiesta Van Trend and Fiesta Van Sport models are finished in Moondust Silver (left) and Panther Black (right) metallic paint at extra cost. (Option)



Upgrade to the Trend and enjoy an even more appealing package.

Trend Additional to Van

- Front fog lights
- Body coloured power folding, heated door mirrors
- Automatic windshield wiper and headlamps
- Auto dimming rear view mirror
- Trip computer
- Driver's seat with lumbar support
- Heated front windscreen

Gross payload 507-513 kg (depending on engine)

Trend styling

Front fog lights and body colour mirrors help to distinguish Trend.



Fiesta Sport Van



With its sporty hot-hatch looks, increased power and sparkling performance, the Ford Fiesta Sport Van conveys a powerful image for you and your business.

Sport Van Additional to Trend

- 1.6 Duratorq TDCi 95 PS diesel engine with a maintenance-free coated Diesel Particulate Filter (cDPF) for Euro Stage V emissions compliance
- 16" 5-spoke alloy wheels
- Sports-style bumpers with 'Sport' front grille
- Sports-style body colour rear roof spoiler
- Bluetooth® Hands-Free Phone and Voice Control System
- Multi Function Display (MFD)
- Front carpet mats
- Sports-style seats with manual lumbar support
- Scuff plates
- Leather-trimmed steering wheel
- Sports-tuned suspension with lowered ride height
- Electronic Stability Programme (ESP) with Traction Assist (TA) and Emergency Brake Assist (EBA)
- Perimeter Alarm
- Head and thorax airbags including active head restraints and driver's knee airbag

Gross payload 492 kg



Body colour rear roof spoiler (Standard)



*Measured in accordance with ISO 3832 and measured in cubic metres.
Any additional options specified on the vehicle will reduce the payload accordingly. Kerb masses are subject to manufacturing tolerances and are for Base models with minimum equipment.
Note: The Bluetooth® word mark and logos are owned by the Bluetooth SIG, Inc. and any use of such marks by Ford Motor Company Limited and its associated companies is under licence. Other trademarks and trade names are those of their respective owners.
Note: It is an offence for drivers to use a hand-held mobile phone or similar device while driving.

Making life easy

Our range of finance, insurance, service and assistance options is designed with just one thing in mind – making life easy for you.

Ford Credit

When it comes to financing your Ford Vehicle, our size and expertise means we're well placed to provide you with a range of finance plans. An application for finance is straightforward and you'll usually get a decision within 15 minutes.

So what can your Ford Dealer provide?

Ford Acquire is ideal if you're a private or business user who wants a traditional and convenient financing plan to own your vehicle. Simply put down a deposit, pay the remainder, plus interest, over an agreed period and the vehicle becomes yours.

Ford Lease* provides simple, tailored funding solutions for your business, whatever the size. Business users only.

Ford Insure** is our comprehensive motor insurance product, designed specifically for Ford drivers.

For more information on our finance products please visit **ford.co.uk**.

Finance subject to status. Guarantees/Indemnities may be required. Freepost Ford Credit.

*Ford Lease is provided by ALD Automotive Ltd, trading as Ford Lease, Oakwood Park, Lodge Causeway, Fishponds, Bristol, BS16 3JA. ALD Automotive is registered in England No. 987418. For the purposes of the Data Protection Act 1998 the data controllers in relation to any information you supply are Ford Motor Company Limited, FCE Bank Plc and ALD Automotive. Finance subject to status. Guarantees and indemnities may be required. ALD Automotive is authorised and regulated by the Financial Services Authority.

**Ford Insure is underwritten and administered by Royal & Sun Alliance Insurance plc, which is authorised and regulated by the Financial Services Authority. FCE Bank plc is authorised and regulated by the Financial Services Authority and acts as an insurance intermediary in relation to Ford Insure. In relation to this same product, Ford Motor Company Limited is an appointed representative of FCE Bank plc. Ford Motor Company Limited acts as an insurance intermediary. Calls may be recorded and monitored.

Services

There are 222 Sales and 245 Aftersales Ford Transit Specialist Dealers across the UK, equipped and trained to meet Commercial Vehicle customer requirements. From these, 113 Sales and 95 Aftersales Dealers have achieved the 'Backbone standard' as recognition of their total commitment to delivering dedicated and professional sales and service support.

To find the location of your nearest Ford Transit Specialist Dealer, simply call the Ford Information Service on 0845 7111 888, or visit the Ford Dealer locator at **www.fordvans.co.uk**

Ford Protect Every new Ford Fiesta Van is protected by a 3-year/60,000-mile Ford Protect Classic Warranty Plan, and also comes with a 1-year Ford Assistance package.

Ford Ranger is protected by a 3-year/60,000 mile Ford Protect Classic Warranty Plan.

Ford Transit and Transit Connects are protected by a 3-year/100,000-mile bumper-to-bumper warranty.

Ford Transit Chassis Cab One-Stop bodywork is covered by a 3-year/100,000-mile warranty and a 3-year Perforation Warranty provided by the bodywork supplier.

Ford Perforation Warranty All New Ranger and Fiesta Van are covered by the Ford Perforation Warranty for 12 years from the date of first registration. Ford Transit, Ford Transit Connect and Tourneo Connect are covered for 8 years from the date of first registration. Subject to terms and conditions. Please see your Ford Transit Specialist Dealer for details.

Ford Assistance Ford Transits, Transit Connects and Rangers are supplied with a minimum of a 1-year Ford Assistance roadside package. Further details are available either on **www.ford.co.uk** or from your local Ford Dealer.

Ford Rapid Fit Our 'no appointments necessary, while-you-wait' fast-fit service for exhausts, brakes, batteries and more, at over 240 sites nationally.

Ford Accident Repair Centres Approved Ford Accident Repair Centres meet rigorous Ford standards and are the best place to return your vehicle to its pre-accident condition.

Contacts

Ford Customer Relationship Centre In the unlikely event that your Ford Dealer can't help you or if you need to speak to us directly, call 0845 841 1111 at local rates.

Ford Rental – local service nationwide Car and van rental from our latest model range. Contact your local Ford Dealer for more information.

Talkback – the company car drivers' club This is your club for extended test drives, special events, and advice on tax and buying issues. Join free, even if you don't drive a Ford, on **www.talkbackclub.com** or call 0845 605 55 66.

Ford Mobility Our MAGIC care centre provides free information on all motoring and mobility issues, including special offers for HRDLA and Motability recipients. Call free on 0800 240 241.

*Subject to terms and conditions.



Ford ECOnetic Technology

The Ford ECOnetic Technology initiative is designed to reduce the cost of running your vehicle through improved fuel economy and lower CO₂ emissions without compromising on style, performance or driving quality.

Affordable and available now

Significant advances in the efficiency of our engines and other innovations such as those shown below combine to help improve performance and fuel economy, and help you to adjust your driving style to achieve further savings*. Many of these technologies have been combined in the Ford Transit ECOnetic model, which achieves an impressive 173 g/km CO₂ with no loss of capacity or performance. The scope of the Ford ECOnetic Technology initiative has recently been expanded to include electric, hybrid-electric and plug-in hybrid-electric vehicles, as well as company-wide sustainability programmes.

Creating a cleaner tomorrow

At Ford, we've been quietly getting on with the job of reducing our impact on the environment. For example, solar/photovoltaic panels on the roof of our Bridgend engine plant in Wales generate enough power to light an area of around 10,000 square metres, and to reduce landfill, almost 300 parts used in Ford vehicles manufactured in Europe are made from recycled non-metallic materials – potentially avoiding 17,000 tonnes of waste every year.

If you would like to know more, logon to: **www.ford.co.uk/FordECOneticTechnology**

*The availability of Ford ECOnetic Technology varies by model in the Ford commercial vehicle range. Please ask your Ford Dealer for details

Smart Regenerative Charging

Helps keep the battery charged in the most efficient way – reducing the amount of fuel used.

Ford Auto-Start-Stop

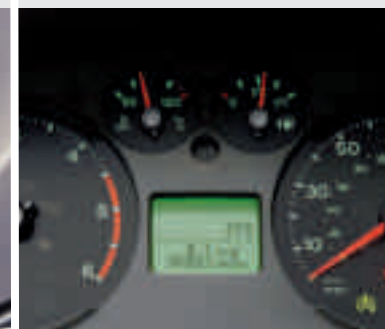
Automatically switches off the engine when you come to a halt and restarts smoothly when you want to move off, reducing fuel consumption and CO₂ emissions by up to ten per cent.

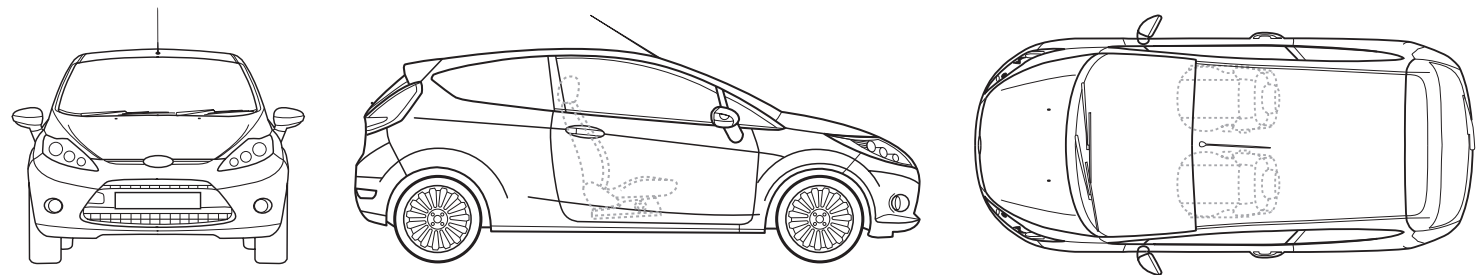
New Duratorq TDCi Stage V engines

Engineered to meet stringent EU Stage V emissions standards, these highly fuel-efficient engines are offered with an impressive choice of power and torque outputs.

Shift Indicator

A light in the instrument cluster tells you when to shift gears, helping you to use less fuel while also encouraging a smoother driving style (available on all diesel models).





Dimensions

	Van
Overall length (mm)	3950
Overall length (mm) Sport version	3953
Overall length (mm) Bumper Styling Kit	3958
Overall width with mirrors (mm)	1973
Overall width without mirrors (mm)	1722
Overall width folded mirrors (mm)	1787
Overall height (mm) min	1433
Overall height (mm) max	1481
Turning circle – kerb to kerb (m)	10.2
Load Area[†]	
Load width between w/houses (mm)	1000
Load height (mm)	806
Load length (mm)	1296
Volume	1m ³
Fuel tank capacity (litres)	
Petrol	45
Diesel	45

[†]Measured in accordance with ISO 3832. Dimensions may vary dependent on the model and equipment fitted.

Weights and loads

	Kerbweight (kg) [‡]	Gross Vehicle Mass (kg)	Gross Payload (kg)	Gross Train Mass (kg)	Max. Towable Mass (braked) (kg)	Max. Towable Mass (unbraked) (kg)
3-door Econetic Van						
1.6 TDCi with DPF, 5-speed manual	1112	1530	493	n/a [*]	n/a [*]	n/a [*]
3-door Van and Trend Van						
1.25 petrol, 5-speed manual	1058	1490	507	2090	600	525
1.4 TDCi with DPF, 5-speed manual	1097	1535	513	2285	750	545
3-door Sport Van						
1.6 TDCi with DPF, 5-speed manual	1133	1550	492	n/a [*]	n/a [*]	n/a [*]

[‡]Represents the lightest kerbweight assuming driver at 75 kg, full fluid levels and 90% fuel levels, subject to manufacturing tolerances and options, etc., fitted. Towing limits quoted represent the maximum towing ability of the vehicle at its Gross Vehicle Mass to restart on a 12 per cent gradient at sea level. The performance and economy of all models will be reduced when used for towing. Nose weight limit is a maximum of 75 kg on all models. Gross Train Mass includes trailer weight. **Note:** All vehicles are Durashift 5-speed manual unless otherwise stated. ^{*}Towing with these vehicles is not permitted.

Fuel, performance and emissions

	Euro Stage	Maximum Power PS (kW)	Torque Nm (Nm with overboost)	CO ₂ emissions (g/km) ^{§§}	Fuel consumption (mpg (L/100km)) ^{§§}			Performance [§]	
					Urban	Extra Urban	Combined	Max. speed (mph)	0-60 mph (secs)
3-door ECONetic Van									
1.6 TDCi with DPF, 5-speed manual	Euro Stage V	95 (70)	205	95	64.2 (4.4)	88.3 (3.2)	78.5 (3.6)	110	12.2
3-door Van and Trend Van									
1.25 petrol, 5-speed manual	Euro Stage V	82 (60)	114	129	38.2 (7.4)	62.8 (4.5)	50.4 (5.6)	105	13.3
1.4 TDCi with DPF, 5-speed manual	Euro Stage V	70 (51)	160	107	61.4 (4.6)	76.3 (3.7)	68.9 (4.1)	101	14.8
3-door Sport Van									
1.6 TDCi with DPF, 5-speed manual	Euro Stage V	95 (70)	205	107	57.7 (4.9)	78.5 (3.6)	68.9 (4.1)	109	11.8

[§]Ford test figures. ^{§§}The declared fuel consumptions and CO₂ emissions are measured according to the technical requirements and specifications of European Directive 80/1268/EEC or the European Regulation (EC) 715/2007 amended by (EC) 692/2008. Fuel consumption and CO₂ emissions are specified for a vehicle type and not for a single car. The applied standard test procedure enables to compare between different vehicle types and different manufacturers. This information is not part of any product offer made. Real world fuel consumption can vary as the fuel efficiency of a vehicle is influenced by (individual) car configurations, driving behaviour, use of technical equipment such as A/C, as well as other non–technical factors. BP Ultimate, a range of advanced performance fuels, the perfect partner to meet the most demanding needs of Ford’s class-leading technology. BP Ultimate can boost power and acceleration, lower exhaust emissions and improve fuel economy, compared with ordinary fuels.

Mechanical features

	ECONetic Van	Van	Trend Van	Sport Van
Engine				
Speed limiter – 62 mph (100 km/h)*	○	○		
Speed limiter – 70 mph (112 km/h)*	○	○		
Steering				
Electric Power Assisted Steering (EPAS)	●	●	●	●
Suspension				
Suspension – Standard tune		●	●	
Suspension – Lowered ride height	●			
Suspension – Sport tuned with lowered ride height				●
Suspension – Front stabiliser bar	●	●	●	●
Technology				
Ford ECO Mode** (driver information system)	●	●	●	●

● = Standard, ○ = Option, at extra cost. *Available as a Dealer fit option only. **Available from December 2011 in combination with audio system and manual transmission.

Safety and security

	ECONetic Van	Van	Trend Van	Sport Van
Safety				
Anti-lock brakes with electronic brake-force distribution (EBD)	●	●	●	●
Electronic Stability Programme (ESP) with Traction Assist (includes Emergency Brake Assist (EBA) (only available with side airbags)	○	○	○	●
Hazard Warning Light – Automatic activation of all turn indicators when emergency braking is applied	●	●	●	●
Airbags – Driver’s and front passenger’s*	●	●	●	●
Airbag – Front passenger’s airbag de-activation switch* (dealer-fitted option only)	○	○	○	○
Airbags – Driver and Passenger’s Side Airbag Pack (Head and thorax, includes active head restraints and driver’s knee airbag)	○	○	○	●
Security				
Central locking	●	●	●	●
Double dead locking	●	●	●	●
Remote control locking with 1 flip key and one plain key	●	●		
Remote control locking with 2 flip keys			●	
Remote control locking with 2 flip keys, perimeter alarm	○	○		●

***Note: A child seat should never be placed in the front passenger seat, when the Ford vehicle is equipped with an operational front passenger’s airbag.**

Exterior equipment

	ECOnetic Van	Van	Trend Van	Sport Van
Design features				
Door mirrors – Black housing, electric operation, integrated side indicator	●	●		
Door mirrors – Body colour housing, heated, electric operation, integrated side indicator			●	●
Door mirrors – Electrically foldable			●	●
Bumpers – Front and rear, body colour with grey self-colour grille insert	●	●	●	
Bumpers – Sports styled body colour with skirts and grey colour sport grille insert				●
Front fog lights – Black bezel rings			●	●
Door handles – Black	●	●	●	
Door handles – Body colour				●
Tailgate handle – Body colour	●	●	●	●
Rear spoiler – Body colour	●	●	●	
Rear Sport spoiler – Body colour				●
Rear windows – Body colour composite panels		●	●	●
Wheels				
Steel – 14"x5.5", 6-spoke wheel covers, 175/65 tyres	●			
Steel – 15"x6", 6-spoke wheel covers, 195/50 tyres		●	●	
Alloy – 16"x6.5", 5-spoke, 195/45 tyres				●
Tyre inflator kit	●	●	●	●
Spare wheel – steel – 14"x5.5", 175/65 tyre	○			
Locking wheel nuts (only with alloy wheels)				●
Detachable towbar and electrical kit		○	○	
Convenience features				
Ford Easy Fuel capless refuelling system with mis-fuel inhibitor	●	●	●	●
Headlights – Twin chamber halogen reflector with black bezel	●	●	●	
Headlights – Halogen projector with chrome bezel				●
Headlights – 'Home Safe' feature – courtesy delay	●	●	●	●
Rear parking aid	○	○	○	○
Tailgate wash/wipe (includes reverse gear wipe)	●	●	●	●
Wipers – Front, variable intermittent and anti-drip feature	●	●	●	●
Wipers – Automatic with rain sensor (includes automatic headlights)			●	●
Windscreen – heated	○	○	●	●
Centre high-mounted rear brake light	●	●	●	●

● = Standard, ○ = Option, at extra cost.

Interior equipment

	ECOnetic Van	Van	Trend Van	Sport Van
Design features				
Floor mats – Front, velour				●
Gear knob – Soft feel	●	●	●	●
Handbrake release knob – Chrome	●	●	●	●
Steering wheel – 3-spoke, PU black	●	●	●	
Steering wheel – 3-spoke, leather-trimmed				●
Steering wheel column – Rake and reach adjustable	●	●	●	●
Audio and communication systems				
Radio/CD, MP3 compatible, 2-line display and 4 front speakers, remote audio controls on steering wheel and 3.5mm AUX connection for external music devices	●	●	●	
Radio/CD, MP3 compatible, multi-function display and 4 front speakers, remote audio controls on steering wheel and 3.5mm AUX connection for external music devices, Bluetooth® Hands-Free Telephone and Voice Control System	○	○	○	●

Interior equipment

	ECOnetic Van	Van	Trend Van	Sport Van
Climate control				
Manual heater	●	●	●	●
Heater – PTC*	●	●	●	●
Air conditioning – Manual control	○	○	○	●
Comfort and convenience				
Trip computer – includes distance to empty/avg. fuel economy/avg. speed/outside temperature*	●	●	●	●
Accessory power socket (12V)	●	●	●	●
Cigar lighter (in lieu of 12V power socket)	○	○	○	○
Centre console – with trinket tray, 2 cup holders and a large stowage bin	●	●	●	●
Courtesy light – For front passengers, overhead with theatre-style dimming; for rear passengers and in load compartment	●	●	●	●
Stowage pockets – Front passenger seat back				●
Windows – Electric front with one-touch lowering/closing on driver's side	●	●	●	●
Seats				
Front seats – Sports-style				●
Front seats – 2-way adjust head restraints	●	●	●	●
Front seat – Driver's lumbar support adjustment			●	●
Front seat – Driver's manual height and fore/aft adjustment	●	●	●	●
Front seat – Passenger's manual fore/aft adjustment	●	●	●	●
Loadspace				
Bulkhead – Half horizontal (composite)	●	●	●	●
Bulkhead – Full height (lower composite, upper steel mesh)	○	○	○	○
Four DIN compliant cargo tie down hooks	●	●	●	●
Load floor rubber mat	●	●	●	●
Load compartment side trim	●	●	●	●

● = Standard, ○ = Option, at extra cost. The Bluetooth® word mark and logos are owned by the Bluetooth SIG, Inc. and any use of such marks by Ford Motor Company is under license. Other trademarks and trade names are those of their respective owners. *Diesel engines only.

Trim and body colour availability

Model	ECOnetic Van and Fiesta Van	Trend Van	Sport Van
Seat trim and colour	Mondus Max in Fairland	Mondus Max in Fairland	Dotts in Syracuse
Seat bolster trim and colour	Mondus Max in Syracuse	Mondus Max in Syracuse	Mondus Max in Syracuse
Door trim and colour	Mondus Max in Syracuse	Mondus Max in Syracuse	Mondus Max in Syracuse
Centre stack bezels/Door handle deco strips	Syracuse Metallic	Syracuse Metallic	Sterling
Upper intrument panel/Environment colour	Syracuse/Syracuse	Syracuse/Syracuse	Syracuse/Syracuse
Solid body colours			
Blazer Blue	●	●	●
Colorado Red	●	●	●
Frozen White	●	●	●
Metallic body colours*			
Panther Black	○	○	○
Moondust Silver	○	○	○
Vision	○	○	○
Midnight Sky	○	○	○
Dark Micastone	○	○	○
Ink Blue	○	○	○
Mars Red	○	○	○

● = Standard, ○ = Option, *Metallic paint is an option at extra cost.



1



2



5



6



9



10



3



4



7



8

Colour and trim

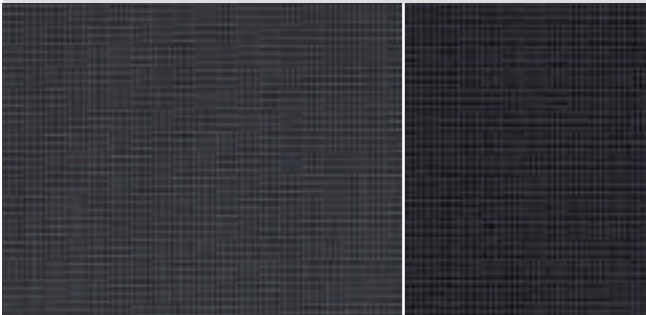
Classic colours

- 1. Colorado Red
- 2. Blazer Blue
- 3. Frozen White
- 4. Panther Black*
- 5. Moondust Silver*

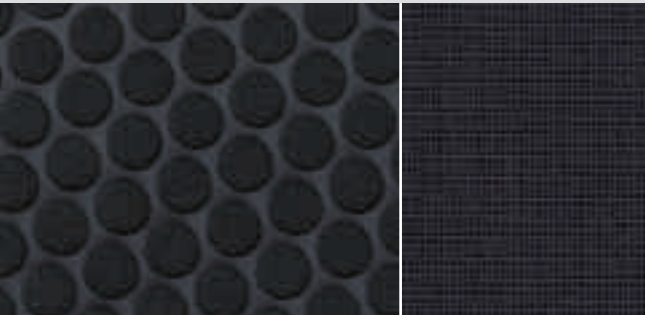
Contemporary colours

- 6. Ink Blue*
- 7. Vision*
- 8. Micastone*
- 9. Midnight Sky*
- 10. Mars Red*

Mondus Max in Fairland seat facing, Mondus Max in Syracuse seat sides (Fiesta Van and Fiesta Van Trend)



Dotts in Syracuse seat facing, Mondus Max in Syracuse seat sides (Fiesta Van Sport)



*Metallic body colours are options, at extra cost.
Note The images used are to illustrate body colours only and may not reflect current specification or product availability in certain markets. Colours and trims reproduced within this brochure may vary from the actual colours, due to the limitations of printing processes used.

Ford understands the colour you select may represent your corporate colour choice for years to come. Therefore we recommend you select one of our classic colours or, if you need a unique colour for your fleet, speak to your local dealer about our SVO colours that offer you more than 100 colour options. Contemporary colours reflect the latest trends in vehicle colouring but are subject to deletion at short notice.