

FORD **RANGER**



Go Further



You demand a lot from yourself. And you're equally demanding of your pick-up – when working and in your time off. This is why you challenged us to make the best Ford Ranger ever.

We heard you loud and clear.

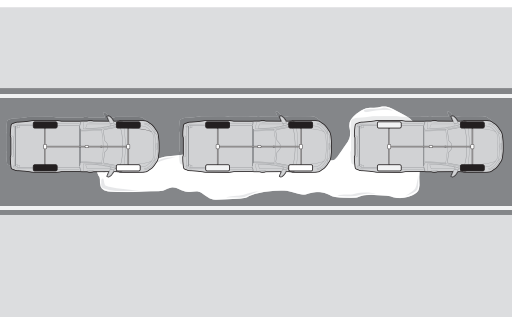
And we love pick-ups. So we immediately set to work. We were relentless, leaving no stone unturned in our determination to set new standards in pick-up design. This is the result. The Ford Ranger: engineered to excel in every area so that it can make your work life easier and your leisure time more fun.



"The Ford Ranger is a great all-rounder, combining the perfect blend of on-road comfort and stability with off-road capability".
Jarlath Sweeney, judge on the panel of CV journalists, International Pick-Up of the Year Awards

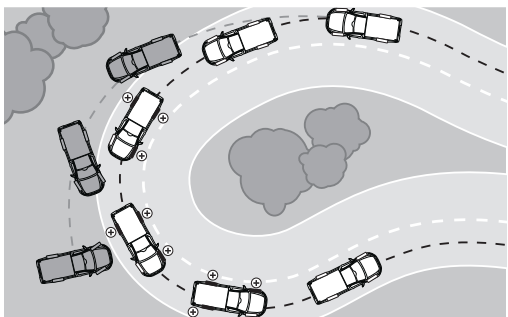
Driven by your work

When you need to get to a remote location in a hurry, you need power, torque and an abundance of traction. Introducing Ford Ranger’s all-new four-wheel drive system.



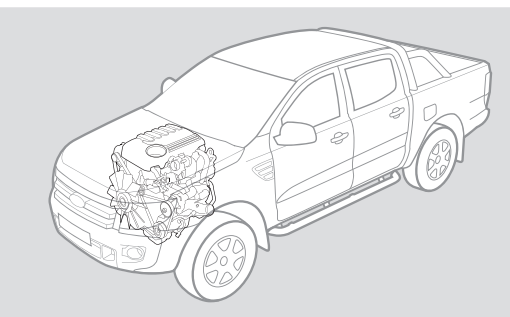
All-new four-wheel drive system

The grip provided by Ford Ranger’s new four-wheel drive system is optimised by a comprehensive ESP system. Part of the system is Traction Control – which has three driver-switchable settings – resulting in excellent off-road driving capabilities.



Electronic Stability Programme (ESP)^(a)

ESP is designed to help you maintain control in extreme driving conditions. It senses when you are deviating from your chosen line and aims to keep you on track by automatically regulating braking and engine output. ESP is standard on all Ford Ranger models.



All-new range of engines

An all-new pick-up deserves all-new engines – and Ford Ranger does not disappoint. Powerful new leading-edge technology 2.2 and 3.2-litre Duratorq TDCi diesel engines provide all the power and torque you need for real pulling power when you need it.

“My job takes me to some remote locations – and I rely on my pick-up to get me there.”

Main image shows a Ford Ranger Double Cab Limited 4x4 with Performance Blue metallic paint (option).

^(a)Uses sensors
^(b)Safety feature

If a job's worth doing, it's worth doing once

Ford Ranger has a huge payload capacity and impressive load box volume. This means fewer trips to do the job. Fewer trips means less time, and as we all know, time is money.



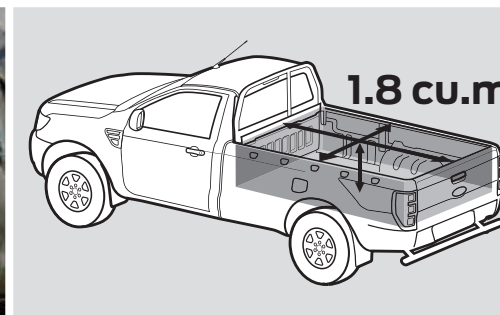
“I need a truck that can handle bigger, heavier loads.”

Main image shows a Ford Ranger Regular Cab XL 4x4 with Thunder metallic paint (option).



Huge payload capacity

With a choice of powerful new diesel engines, Ford Ranger comes with an impressive payload capacity (1340 kg for the XL Regular Cab).



Impressive load box volume

Ford Ranger has been designed to work harder to earn its keep, so it offers a huge load box volume (1.8 cu.m to the top of the load box for the Regular Cab).

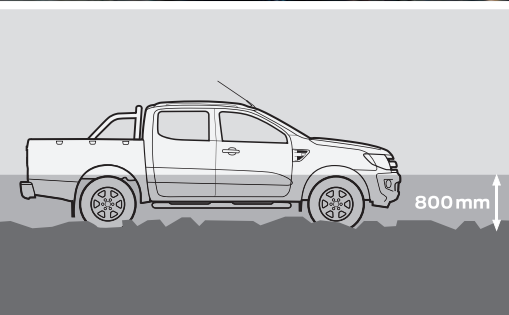


DIN-compliant tie-downs

Ford Ranger's internal and external tie-downs are DIN-compliant, and can handle up to 4000 newtons of lashing force. Limited and Wildtrak come with an innovative, adjustable C-channel tie-down system for the load box as standard.

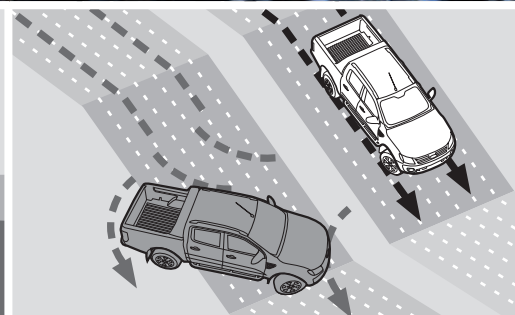
Just the job for when your work is done

‘Go anywhere. Do anything’ sums up the design brief when it comes to defining Ford Ranger’s high-tech ground-covering capability.



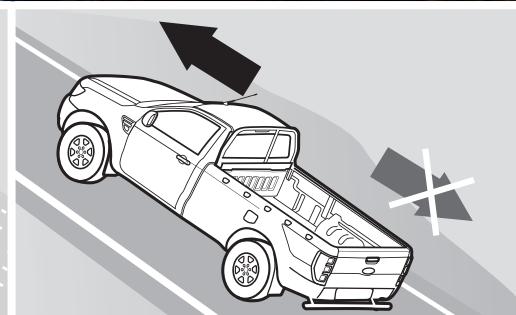
Excellent wading depth

Ford Ranger is designed to drive through water up to 800 mm deep – which can be the difference between getting there or not.



Hill Descent Control

Hill Descent Control is designed to regulate your downhill speed in off-road conditions without you even having to touch the brake or the accelerator pedals – and it operates in forward and reverse gears.



Hill Start Assist

Hill Start Assist is designed to prevent you from rolling down a slope when you move your foot from the brake pedal to the accelerator pedal. It works in forward and reverse gears, so is ideal for towing and pulling heavy loads.

“I take my pick-up to places I wouldn’t even take my bike.”

Main image shows a Ford Ranger Super Cab XLT 4x4 in Moondust Silver (option).

We take the same pride in our work as you do in yours

Every single component in the Ford Ranger has been engineered for dependability and strength with one objective clearly in mind; quality that's built to last.



“I expect the best from myself, so I demand the best from my pick-up.”

Main image shows a Ford Ranger Double Cab Limited 4x4 with Copper Red metallic paint (option).



6-speed automatic transmission

The smooth 6-speed automatic transmission – with manual sequential-shift capability – available in the Ford Ranger is typical of the quality engineered into every aspect of its design. (Limited availability during 2013)



84,000 door shuts

Rigorous testing of the entire vehicle – from the drivetrains to the number of door-shuts in testing – gives Ford Ranger excellent durability.



Tested to extremes

From frost-covered prototypes started up in minus 40°C temperatures at oxygen-starved 4500-metre altitudes, to sun-baked vehicles towing fully-laden trailers up long inclines in blistering 50°C heat, Ford Ranger has been pushed to extremes.



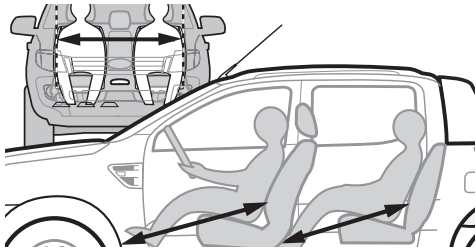
Some cargo wants to know if you’re there yet

Ford Ranger is designed to offer a car-like driving experience for the driver and passengers; a comforting thought when you’re transporting your most precious cargo.



“It’s great to feel as comfortable and protected in a pick-up as I would in a car.”

Main image shows a Ford Ranger Double Cab Limited 4x4 with Moondust Silver metallic paint (option).



Generous leg and shoulder room

Ample space for the driver and four adult passengers to stretch out in comfort is proof of Ford Ranger’s work- and family-friendly interior.

Side curtain airbags¹⁾

Deploy at head level, and are designed to help protect the driver and passengers from injury caused by the side windows.

Driver’s knee airbag¹⁾

Designed to help prevent injuries through contact with the steering column.

Collapsible steering column and pedals

Designed to collapse in a frontal impact to help reduce possible injuries to the driver.

Anti-lock braking system (ABS)¹⁾

Designed to prevent the wheels from locking up under heavy braking, helping to maintain steering control in an emergency.

Safety without compromise

Ford Ranger’s holistic approach to safety is reflected in a 5-star overall safety rating, the maximum awarded by Euro NCAP.



Intelligent Protection System (IPS)¹⁾

Beneath Ford Ranger’s steel safety cage¹⁾ lies a fully comprehensive multi-airbag system¹⁾, three-point seat belt pre-tensioners¹⁾ and collapsible steering column and pedals. All designed to spring into action in a fraction of a second.

The Ford Ranger IPS¹⁾ includes:

- 1. Driver’s and front passenger’s airbags¹⁾
- 2. Driver’s and front passenger’s side impact airbags¹⁾
- 3. Side curtain airbags for first- and second-row seats¹⁾
- 4. Driver’s knee airbag¹⁾
- 5. Pre-tensioners¹⁾, load-limiting retractors and height-adjustable mounts on front seat belts
- 6. Collapsible steering column and pedals for optimised protection of driver’s legs and feet.
- 7. Robust computer-optimised body structure with ultra-rigid safety cell¹⁾ and crumple zones
- 8. Driver’s and front passenger’s belt minder¹⁾
- 9. Anti-submarining seat bases
- 10. Anti-lock braking system (ABS)¹⁾ with electronic brake-force distribution (EBD)¹⁾, Emergency Brake Assist (EBA)¹⁾ and Load Adaptive Control (LAC)¹⁾

*Note A child seat should never be placed in the front passenger seat when the Ford vehicle is equipped with an operational front passenger’s airbag. The safest place for children is properly restrained on the second-row seats.

¹⁾Safety features.



Helping to stay on the straight and narrow

Trailer sway can be dangerous. That’s why Ford Ranger comes with a sophisticated Electronic Stability Programme (ESP)¹⁾ – with innovative Trailer Sway Control¹⁾ technology as standard.

A full line-up of passive and active safety features make use of the latest technology to protect driver, passengers and cargo.

- **Electronic Stability Programme (ESP)¹⁾**
Designed to constantly monitor the vehicle’s behaviour and help you maintain control in difficult and dangerous driving conditions.
- **Traction Control¹⁾**
Designed to help maintain drive in difficult conditions with three selectable control settings that can vary engine and braking interventions to maximise traction on any surface.
- **Hill Start Assist²⁾**
Helps to prevent the vehicle from rolling back when starting on an uphill slope by keeping the brakes applied until the vehicle starts to move.
- **Hill Descent Control²⁾**
Regulates downhill speed in off-road conditions.
- **Load Adaptive Control (LAC)¹⁾**
When unladen, partially- or fully-laden, senses the centre of gravity of the vehicle and adjusts the responses of the ESP system to compensate.
- **Emergency Brake Assist (EBA)¹⁾**
Ensures full braking effect by increasing pressure within the brake system during an emergency stop.
- **Emergency Brake Warning²⁾**
The hazard/indicator lights automatically flash during emergency braking.
- **Roll-over mitigation¹⁾**
Designed to identify a potentially dangerous driving situation, and activate the ESP to restore stability.
- **Trailer Sway Control¹⁾**
When trailer sway is detected the system reduces engine torque and applies the brakes to the appropriate wheel(s) to help restore control (see below). Part of Electronic Stability Programme (ESP).

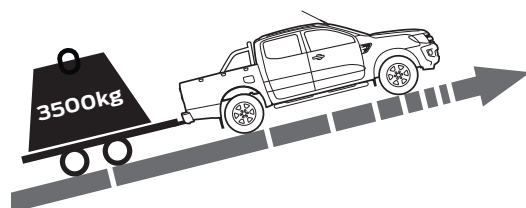
“My Ranger is so powerful and stable, I have to keep reminding myself that I’m pulling a trailer.”

Main image shows a Ford Ranger Double Cab Wildtrak 4x4 with roller shutter and Wildtrak Orange metallic paint (options).

¹⁾Uses sensors

¹⁾Safety feature.

²⁾Driver assistance feature.



Superb towing ability

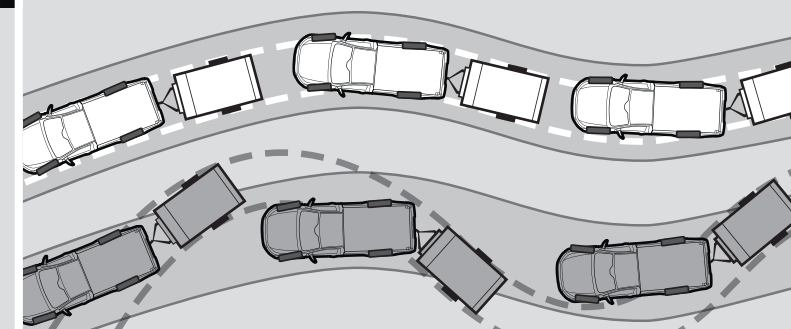
With up to 3500 kg maximum towing capacity (150PS/200PS 4x4s with a braked trailer), Ford Ranger offers some serious pulling power. All 4x4 Rangers are fitted with a tachograph sensor port. (Commercial users may require a digital tachograph. A fitting kit is available from your Ford Dealer).

Electronic shift-on-the-fly

Change from two-wheel drive to four-wheel drive high ratio – and back again – at the flick of a switch when you’re on the move.

Rear-view camera²⁾

Select reverse and the image from the rear-view camera comes on automatically in the rear-view mirror. Marker lines overlaid on the camera image indicate where the vehicle is heading. (Standard on Wildtrak only)



Communication: the key to every successful relationship

You've got to stay in touch if you're going to stay ahead in business. That's why we've made some of the latest communications and Sat Nav technology available on Ford Ranger.



Voice Control System

This technology lets you control your Bluetooth®-compatible mobile phone, audio, SD navigation and dual-zone air conditioning systems, where fitted, using voice commands. (Standard on XLT, Limited and Wildtrak)



“I need to be in touch 24/7, and know exactly where I’m going.”



Main image shows a Ford Ranger Double Cab Wildtrak with Wildtrak Orange metallic paint (option).

Note The Bluetooth® word mark and logos are owned by the Bluetooth SIG, Inc. and any use of such marks by Ford Motor Company Limited and its associated companies is under licence. Other trademarks and trade names are those of their respective owners.

Note It is an offence for drivers to use a hand-held mobile phone or similar device while driving.

Bluetooth®-enabled audio streaming

Lets you stream music from your Bluetooth®-enabled mobile phone and play it through your audio system, as well as control your mobile device. You can also access the phone book and recent calls. (Standard on XLT, Limited and Wildtrak)

USB port

Built-in USB-connectivity lets you listen to, and operate, your memory stick or USB-enabled digital music player via your Ford Ranger's audio system (standard on XLT, Limited and Wildtrak). A dedicated iPod® connector cable is available (accessory).

Radio CD/SD navigation system with 5" multi-functional display

Features include message centre with map view, acoustic and visual route guidance, RDS-TMC functionality supporting dynamic navigation (TMC constantly broadcasts road traffic information to the navigation unit), SD-card with a full western European map including comprehensive points-of-interest, CD player, and 5" colour multi-functional display. (Standard on Wildtrak)



Ford Easy-Fuel capless refuelling system
Prevents filling with the wrong fuel. (Standard)

6-speed manual transmission
Improved fuel economy and faster acceleration from rest when fully laden. (Standard)

Electronic Stability Programme (ESP)
Includes Traction Control and Emergency Brake Assist (EBA). (Standard)

Seven airbags
(Standard)

Lockable tailgate
(Standard)

Drive-away door locking
(Standard)



XL

Ford Ranger XL is a high-tech, hard-working asset to any business, designed to take even the toughest of challenges in its stride.



*Note: A rear-facing child seat should never be placed in the front passenger seat when the Ford vehicle is equipped with an operational front passenger's airbag. The safest place for children is properly restrained on the second row seats.

Model shown is a Ford Ranger Double Cab XL 4x4 with Sea Grey metallic paint (option).

XL standard features

- 16" steel wheels
- Silver-painted front grille
- Rear mudflaps
- Manual tailgate lock
- Inner DIN-compliant tie-downs
- Ford Easy-Fuel capless refuelling system
- 6-speed manual transmission
- Electronic Stability Programme (ESP) with Traction Control and Emergency Brake Assist (EBA)
- Electronic shift-on-the-fly
- Electronic high and low range selection
- Electrically-operated and heated door mirrors
- Electrically-operated front windows with one-shot driver's window
- Theatre-style dimming courtesy lights and illuminated entry
- AUX audio input 3.5 mm jack
- Radio/CD/MP3-compatible with multi-functional display
- Second power point in instrument panel
- Driver's and front passenger's airbags*, side airbags, side air curtains and driver's knee airbag
- ISOFIX child safety seat attachments (Double Cab only)
- Drive-away door locking (driver configurable)
- Thatcham Cat 1 alarm
- Passive Anti-Theft System (PATS)
- Digital Tachograph KITAS prep pack

Key options

- Air conditioning
- Tow bar with 13 pin Euro Connector with 12V auxiliary supply
- Digital tachograph, fascia mounted (4x4 only)
- Fleet large nozzle fuel filler (replaces Ford Easy-Fuel, available on XL only)

Ranger Base series also available. For further information please refer to the range page (p24) and specification tables (p30 onwards).



Cruise control
(Standard)

Automatic headlights
(Standard)

Power-operated, foldable and heated mirrors, chrome finish
(Standard)

Heated windscreen
(Standard)

Auto-wipers with rain sensor
(Standard)

Multi-functional display
(Standard)



XLT

Ford Ranger XLT builds upon XL's strong foundations with a wealth of extra comfort and convenience features.



Model shown is a Ford Ranger Double Cab XLT 4x4 with Colorado Red solid paint.

In addition to XL

- 16" alloy wheels
- Chrome finish front grille
- Automatic headlights and auto-wipers with rain sensor
- Front fog light
- Power-foldable door mirrors
- Chrome finish door mirror caps and door handles
- Polished stainless steel side steps
- Bed liner with protective side wall
- Heated windscreen
- Air conditioning
- Auto-dimming rear-view mirror
- Overhead console with map lights and sunglasses holder
- Radio/CD/MP3-compatible with large-style dot matrix multi-function display
- Cruise control
- Bluetooth® hands-free phone with Voice Control System and USB interface
- USB and Bluetooth® audio streaming
- Leather-trimmed steering wheel with remote audio controls
- Floor mats
- Polished stainless steel scuff plates

Key options

- Tow bar with 13 pin Euro Connector with 12V auxiliary supply
- Chrome tubular sports bar
- Digital tachograph, fascia mounted

Note The Bluetooth® word mark and logos are owned by the Bluetooth SIG, Inc. and any use of such marks by Ford Motor Company Limited and its associated companies is under licence. Other trademarks and trade names are those of their respective owners.

Note It is an offence for drivers to use a hand-held mobile phone or similar device while driving.

Interior trim colouration may vary on production vehicles and can differ from that shown.



Dual-zone Electronic Automatic Temperature Control (DEATC) air conditioning
(Standard)

Parking distance sensors
(Standard)

8-way electrically-adjustable, heated driver's seat with lumbar support¹
(Standard on Double Cab)

C-channel tie-down system
(Standard)

Step bumper
(Standard)

Radio/CD with 4.2" colour matrix multi-function display
(Standard)



Limited

Ford Ranger Limited comes with a comprehensive equipment specification that is the equal of many prestige passenger cars.



Model shown is a Ford Ranger Double Cab Limited 4x4 with Ocean Blue metallic paint (option).

In addition to XLT

- 17" alloy wheels
- Chrome surround wing grille
- Chrome finish steel rear step bumper
- C-channel tie-down system
- Privacy glass on rear windows
- Door mirrors with puddle lights and integrated turn indicator
- Coolbox in centre console
- Dual-zone Electronic Automatic Temperature Control (DEATC) air conditioning
- Chrome tubular sports bar
- Front mudflaps
- Radio/CD/MP3-compatible with 4.2" colour matrix multi-function display
- Premium carpet floor mats
- 8-way electrically-adjustable heated driver's seat with lumbar support¹
- Leather seat trim
- Rear parking distance sensors
- Ambient Lighting

Key options

- Tow bar with 13 pin Euro Connector with 12V auxiliary supply
- Satellite Navigation inc. rear view camera and 5" full colour screen
- Digital tachograph, fascia mounted

¹Standard on Double Cab models, manually adjustable heated seat standard on Super Cab models
Interior trim colouration may vary on production vehicles and can differ from that shown.



Radio/CD/SD-navigation system with 5" colour matrix display
(Standard)

Rear-view camera
(Standard)

18" machined alloy wheels
(Standard)

Wildtrak

Ford Ranger Wildtrak is a monument to bold styling and leading-edge driving technology.



Model shown is a Ford Ranger Double Cab Wildtrak 4x4 with Wildtrak Orange metallic paint (option).

In addition to Limited

- 18" machined alloy wheels
- Titanium effect front grille
- Titanium-painted mirror housings
- Body colour front bumper with sports highlighting
- Titanium-painted steel rear step bumper
- Silver steel side bars
- Black door and tailgate handles
- Aluminium finish roof rails
- Aerodynamic sports bar
- Wing grille with 'Wildtrak' logo
- Radio/CD/SD-navigation system with 5" colour matrix display
- Rear-view camera
- 'Ice Blue' ambient interior lighting with dimming control
- Leather-trimmed steering wheel with 'Wildtrak' stitching
- 'Wildtrak' floor mats
- 'Wildtrak' seat trim

Key options

- Lockable roll cover*
- Tow bar with 13 pin Euro Connector with 12V auxiliary supply
- Digital tachograph, fascia mounted

*Manufactured by Edstrom. Please note that supplier-branded accessories are supplied with a supplier's warranty and are subject to the supplier's warranty terms. Such accessories are, therefore, excluded from the Ford warranty.

Interior trim colouration may vary on production vehicles and can differ from that shown.

'Ice Blue' ambient interior lighting with dimming control
(Standard)

'Wildtrak' logo
(Standard)

Integrated roll and lock load box cover*
(Option)



The range

With a superb choice of bodystyles, series and engines – plus two-wheel drive and four-wheel drive – there’s a Ford Ranger to meet every need.

Ranger

- Features include**
- 6-speed manual transmission
 - Electronic shift-on-the-fly
 - Electronic Stability Programme (ESP)
 - Ford Easy-Fuel capless refuelling system
 - Electrically-operated door mirrors
 - 4-way adjustable driver's seat
 - AUX audio input 3.5 mm jack

- Bodystyles**
- Regular Cab 4x4
 - Double Cab 4x4

- Diesel engine**
- 2.2 Duratorq TDCi 92 kW (125 PS), 6-speed manual

XL

- In addition to Ranger**
- Drivers seat with height adjust and lumbar support
 - Electrically-operated and heated door mirrors
 - Tailgate locking
 - Tailgate badging

- Bodystyles**
- Regular Cab 4x2 and 4x4
 - Regular Chassis Cab 4x4
 - Super Cab 4x2 and 4x4
 - Double Cab 4x4

- Diesel engines**
- 2.2 Duratorq TDCi 125 PS, 6-speed manual
 - 2.2 Duratorq TDCi 150 PS, 6-speed manual

XLT

- In addition to XL**
- 16" alloy wheels
 - Heated windscreen
 - Power-operated and heated mirrors
 - Chrome finish door mirror caps and door handles
 - Bluetooth® hands-free phone with Voice Control System and USB interface
 - Steering wheel-mounted audio controls
 - Cruise control

- Bodystyles**
- Super Cab 4x4
 - Double Cab 4x4

- Diesel engine**
- 2.2 Duratorq TDCi 150 PS, 6-speed manual

Limited

- In addition to XLT**
- 17" alloy wheels
 - 8-way electrically-adjustable heated driver's seat with lumbar support¹
 - Power-foldable door mirrors with puddle lights
 - Dual-zone Electronic Automatic Temperature Control (DEATC) air conditioning
 - Radio/CD with 4.2" colour matrix multi-function display
 - Rear parking distance sensors

- Bodystyles**
- Super Cab 4x4
 - Double Cab 4x4

- Diesel engines**
- 2.2 Duratorq TDCi 150 PS, 6-speed manual and optional 6-speed automatic
 - 3.2 Duratorq TDCi 200 PS 6-speed manual

Wildtrak

- In addition to Limited**
- 18" machined alloy wheels
 - Radio/CD/SD-navigation system with 5"colour matrix display
 - Rear-view camera
 - 'Ice Blue' ambient interior lighting with dimming control

- Bodystyle**
- Double Cab 4x4

- Diesel engine**
- 3.2 Duratorq TDCi 200 PS, 6-speed manual and optional 6-speed automatic

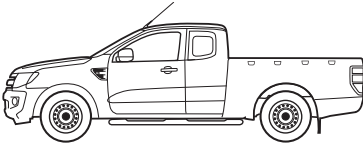
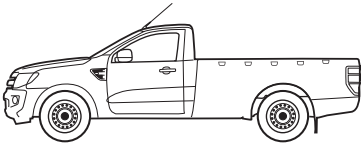


Note The Bluetooth® word mark and logos are owned by the Bluetooth SIG, Inc. and any use of such marks by Ford Motor Company Limited and its associated companies is under licence. Other trademarks and trade names are those of their respective owners.

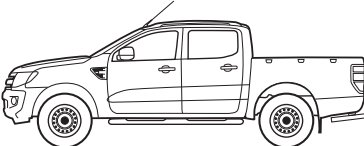
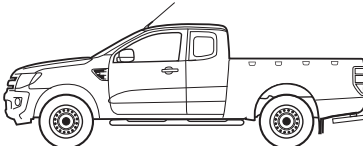
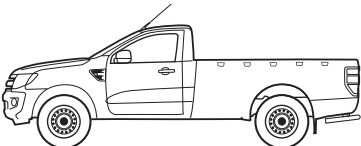
Note It is an offence for drivers to use a hand-held mobile phone or similar device while driving.

Models shown are (left) Ford Ranger Regular Cab XL 4x4 in Moondust Silver (option), (centre) Ford Ranger Super Cab 4x4 XLT in Thunder (option) and (right) Ford Ranger Double Cab Limited 4x4 in Panther Black (option). Engine and bodystyle combinations vary throughout the range. For complete availability and production timings refer to the spec tables. ¹Double Cab only, manually adjustable heated seat standard on Super Cab models

4x2



4x4



Duratorq TDCi Stage V engines

These highly fuel-efficient engines use advanced technology – including a coated diesel particulate filter (cDPF), a new Exhaust Gas Recirculation (EGR) valve, low voltage metallic glow plugs and Variable Flow Oil Pump (VFOP) – to meet stringent EU Stage V emissions standards. The 2.2-litre Duratorq TDCi diesel engine uses variable geometry turbochargers for increased power of 125/150 PS (92/110 kW) and torque (320/375 Nm), with combined fuel economy of 38.7 mpg on 4x2 models and up to 37.2 mpg on 4x4 models. The new 5-cylinder 3.2-litre Duratorq TDCi diesel provides 200 PS (147 kW) and maximum torque of 470 Nm, with 90 per cent of this impressive pulling power available from 1,500 to 2,750 rpm.

Enhanced versatility

When it comes to fitting out your Ford Ranger, we've got everything you'll ever need. Wherever you're heading.

Fuel-fired heater²⁾

Pre-warms the engine for easier starting in cold conditions and heats the cabin area. (Dealer fit accessory)



ClimAir® wind deflector^{*}

Reduces turbulence and noise for a more enjoyable drive with the windows down, even during light rain. (Accessory)

18" 6x2-spoke alloy wheels¹⁾

With 265/60R18 tyres. (Dealer fit accessory)

Locking wheel nuts

Precision forged key with hardened pins for easy installation and removal. (Fitted as standard on XLT, Limited and Wildtrak alloy wheels)

Aluminium tonneau cover¹⁾

A hard tonneau cover that looks as good as it is practical and tough. (Option and dealer fit accessory)

Tow bar

Ford tow bars are designed and developed as an integral part of your vehicles structure. As well as offering up to 3350Kg* braked towing capability, every electrical kit is specifically designed to integrate perfectly into the vehicles electrical system to support the Ranger Trailer Sway Control feature. (Option and dealer fit accessory)



Mobile navigation

Leave your maps behind with a simple and intuitive mobile GPS navigation system. Please contact your Ford Dealer for details. (Accessory)



Parrot® car kits^{*}

These Bluetooth® hands-free kits connect via the factory-fitted audio system. Shown is the Parrot® MKi9200 with 2.4" colour TFT screen, with built-in voice recognition and automatic phone-book synchronisation^{*}. (Accessory)

Note The Bluetooth® word mark and logos are owned by the Bluetooth SIG, Inc. and any use of such marks by Ford Motor Company Limited and its associated companies is under licence. Other trademarks and trade names are those of their respective owners.

Note It is an offence for drivers to use a hand-held mobile phone or similar device while driving.



Hardtop with windows. (Option and dealer fit accessory)



Hardtop without windows. (Dealer fit accessory)

Hardtops¹⁾

Available for Double Cab and Super Cab models, these hardtops in Moondust Silver not only look good but also offer durable protection against the elements and come with or without full-length side windows. (Colour-coded options available)



Overrail bedliner¹⁾

Heavy-duty skid-resistant surface protects the vehicle's bedrails and provides drainage to reduce mould, mildew and corrosion. The bedliner also protects the upper edges of the load box. (Option and dealer fit accessory)



For more information

More accessories are available. If you want to know more about personalising your new Ford Ranger, contact your local Ford Dealer.

Hard tonneau cover¹⁾

For Double Cab models only, this tough and lockable cover is painted in original silver body colour. (Option and dealer fit accessory)

An ingenious hinged design allows easy access to the load box.

It can be locked in a raised position to transport bulky items. Also available on Double Cab models fitted with optional integrated stainless steel sports bars.

Soft tonneau cover³⁾

Helps protect equipment and valuables from rain and dust. Easy opening and closing with a steel tonneau bow to assist water run-off. (Available as an option or a dealer fit accessory)

Roller shutter³⁾

Ultra-strong aluminium and a high-quality dual action locking mechanism offer outstanding protection and complete security for your cargo. (Option and dealer fit accessory)

Digital tachograph

Sets new standards for performance, technology, design and tamper-proofing. Smoothly integrated into vehicle interior. (Option and accessory)



Making life easy

Our range of finance, insurance, service and assistance options is designed with just one thing in mind – making life easy for you.

Commercial Vehicle Finance

At Ford, we can help you find the right vehicle to suit your needs, whether its for business or pleasure. Our wide range of competitive finance products can help you get on the road – quickly and easily.

Ford Credit: Provides a range of traditional finance products for customers who are interested in Commercial Vehicle ownership.

Ford Lease: Specialises in contract hire and leasing and provides an alternative range of finance products aimed at business customers (business users only).

Both are part of one of the world’s biggest names in automotive finance, and can offer you affordable, flexible and innovative products.

Important Information:
Ford Credit: Finance subject to status. Guarantees may be required. Freepost Ford Credit.
Ford Lease: Ford Lease is provided by ALD Automotive Ltd, trading as Ford Lease, Oakwood Park, Lodge Causeway, Fishponds, Bristol, BS16 3JA. ALD Automotive is registered in England No. 987418. For the purposes of the Data Protection Act 1998 the data controllers in relation to any information you supply are Ford Motor Company Limited, FCE Bank Plc and ALD Automotive. Finance subject to status. Guarantees and indemnities may be required. ALD Automotive is authorised and regulated by the Financial Services Authority.

Services

There are 164 Sales and 219 Aftersales Ford Transit Specialist Dealers across the UK, equipped and trained to meet Commercial Vehicle customer requirements. From these, 101 Sales and 92 Aftersales Dealers have achieved the ‘premium standard’ as recognition of their total commitment to delivering dedicated and professional sales and service support.

To find the location of your nearest Ford Transit Specialist Dealer, simply call the Ford Information Service on 0845 7111 888, or visit the Ford Dealer locator at www.fordvans.co.uk

Ford Protect Every new Ford Fiesta Van is protected by a 3-year/ 60,000-mile Ford Protect Classic Warranty Plan, and also comes with a 1-year Ford Assistance package.

Ford Ranger is protected by a 3-year/60,000 mile Ford Protect Classic Warranty Plan.

Ford Transit, Transit Custom and Transit Connects are protected by a 3-year/100,000-mile bumper-to-bumper warranty.

Ford Transit Chassis Cab One-Stop bodywork is covered by a 3-year/ 100,000-mile warranty and a 3-year Perforation Warranty provided by the bodywork supplier.

Ford Perforation Warranty All New Ranger, Transit Custom and Fiesta Van are covered by the Ford Perforation Warranty for 12 years from the date of first registration. Ford Transits, produced from the 1st March 2012, are covered by 12 years from the date of first registration. Ford Transit Connect and Tourneo Connect are covered for 10 years from the date of first registration. Subject to terms and conditions. Please see your Ford Transit Specialist Dealers for details.

Ford Assistance Ford Transit, Transit Custom, Transit Connect and Rangers are supplied with a minimum of a 1-year Ford Assistance roadside package. Further details are available either on www.ford.co.uk or from your local Ford Dealer.

Ford Rapid Fit Our ‘no appointments necessary, while-you-wait’ fast-fit service for exhausts, brakes, batteries and more, at over 240 sites nationally.

Ford Accident Repair Centres Approved Ford Accident Repair Centres meet rigorous Ford standards and are the best place to return your vehicle to its pre-accident condition.

Contacts

Ford Customer Relationship Centre In the unlikely event that your Ford Dealer can’t help you or if you need to speak to us directly, call 0845 841 1111 at local rates.

Ford Rental – local service nationwide Car and van rental from our latest model range. Contact your local Ford Dealer for more information.

Talkback – the company car drivers’ club This is your club for extended test drives, special events, and advice on tax and buying issues. Join free, even if you don’t drive a Ford, on www.talkbackclub.com or call 0845 605 55 66.

Ford Mobility Our MAGIC care centre provides free information on all motoring and mobility issues, including special offers for HRDLA and Motability recipients. Call free on 0800 240 241.

*Subject to terms and conditions.

Ford EConetic Technology

The Ford EConetic Technology initiative is designed to reduce the cost of running your vehicle through improved fuel economy and lower CO₂ emissions without compromising on style, performance or driving quality.

Affordable and available now

Significant advances in the efficiency of our engines and other innovations such as those shown below combine to help improve performance and fuel economy, and help you to adjust your driving style to achieve further savings*. Many of these technologies have been combined in the Ford Transit Custom EConetic model, which achieves an impressive 162 g/km CO₂ with no loss of capacity or performance. The scope of the Ford EConetic Technology initiative has recently been expanded to include electric, hybrid-electric and plug-in hybrid-electric vehicles, as well as company-wide sustainability programmes.

Creating a cleaner tomorrow

At Ford, we’ve been quietly getting on with the job of reducing our impact on the environment. For example, solar/photovoltaic panels on the roof of our Bridgend engine plant in Wales generate enough power to light an area of around 10,000 square metres, and to reduce landfill, almost 300 parts used in Ford vehicles manufactured in Europe are made from recycled non-metallic materials – potentially avoiding 17,000 tonnes of waste every year.

If you would like to know more, logon to: www.ford.co.uk/FordEConeticTechnology

*The availability of Ford EConetic Technology varies by model in the Ford commercial vehicle range. Please ask your Ford Dealer for details

Smart Regenerative Charging

Saves fuel by charging the battery only when you are not pressing the accelerator where possible.



Ford Auto-Start-Stop

When your vehicle is idling at a standstill, the engine automatically shuts down to save fuel. When you want to drive off, the engine immediately restarts.



New Duratorq TDCi Stage V engines

Engineered to meet stringent EU Stage V emissions standards, these highly fuel-efficient engines are offered with an impressive choice of power and torque outputs.



Shift Indicator

Advises you when to change gear, for maximum fuel efficiency and to encourage a smoother driving style.



Specifications



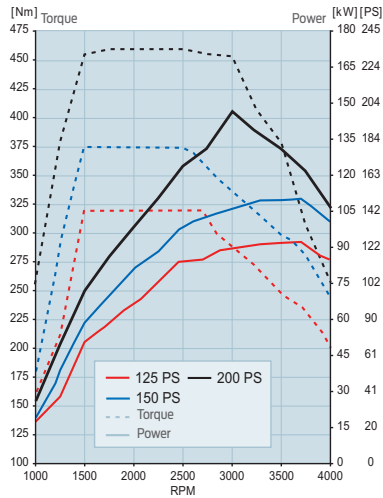
Manoeuvrability

		Regular Cab 4x2	Regular Cab 4x4	Super Cab 4x2	Super Cab 4x4	Double Cab 4x4
A	Ground clearance (unladen) – mm	229	229	229	229	229
B	Angle of approach (unladen)	–	28°	–	28°	28°
C	Angle of departure (unladen)	–	28°	–	28°	28°
D	Tilt angle (unladen)	35°	35°	35°	35°	35°
E	Wading depth – mm	600	800	600	800	800
F	Ramp breakover angle (4x4 only)	–	25°	–	25°	25°
Turning circle – m (kerb to kerb)		11.8	12.4	11.8	12.4	12.4

Dimensions

	Regular Cab 4x2	Regular Cab 4x4	Super Cab 4x2	Super Cab 4x4	Double Cab 4x4
Exterior mm					
Overall length	5274	5274	5359	5359	5359
Overall width	1850	1850	1850	1850	1850
Overall height (unladen)	1703	1800-1806	1706	1804-1840	1815-1848
Track front	1590	1560	1590	1560	1560
Track rear	1590	1560	1590	1560	1560
Wheelbase	3220	3220	3220	3220	3220
Load box length (at floor without bedliner)	2317	2317	1847	1847	1549
Load box width (at floor without bedliner)	1560	1560	1560	1560	1560
Load box depth (without bedliner)	511	511	511	511	511
Loadspace between wheel arches (without bedliner)	1139	1139	1139	1139	1139
Loading height (unladen)	724	835	724	835	835
Interior mm					
Front					
Effective headroom	1024	1024	1024	1024	1022
Maximum effective leg room	1058	1058	1058	1058	1058
Rear					
Effective headroom			938	938	975
Maximum effective leg room			796	796	902

All dimensions are subject to manufacturing tolerances and refer to minimum specification models and do not include additional optional equipment.



Diesel (FWD)

A choice of 2.2 or 3.2 Duratorq TDCi engines, available in the following power and torque configurations:

- 125 PS/320 Nm (2.2 only)
- 150 PS/375 Nm (2.2 only)
- 200 PS/470 Nm (3.2 only)

Transmission

6-speed automatic transmission

Engine data

Drive	Euro Stage	Maximum power ^o	Maximum torque ^o	Regular Cab 4x4	Regular Cab XL 4x2 and 4x4	Super Cab XL 4x2 and 4x4	Super Cab XLT 4x4	Super Cab Limited 4x4	Double Cab 4x4	Double Cab XL 4x4	Double Cab XLT 4x4	Double Cab Limited 4x4	Double Cab Wildtrak 4x4
2.2 Duratorq TDCi 2198 cc	Stage V	92 kW (125 PS) at 3700 min ⁻¹ (rpm)	320 Nm at 1500-2500 min ⁻¹ (rpm)	Dura-shift 6-speed manual	Dura-shift 6-speed manual				Dura-shift 6-speed manual				
2.2 Duratorq TDCi 2198 cc	Stage V	110 kW (150 PS) at 3700 min ⁻¹ (rpm)	375 Nm at 1500-2500 min ⁻¹ (rpm)		Dura-shift 6-speed manual ¹⁾	Dura-shift 6-speed manual	Dura-shift 6-speed manual	Dura-shift 6-speed manual		Dura-shift 6-speed manual	Dura-shift 6-speed manual	Durashift 6-speed manual, optional Durashift 6-speed auto	
3.2 Duratorq TDCi 3196 cc	Stage V	147 kW (200 PS) at 3000 min ⁻¹ (rpm)	470 Nm at 1500-2750 min ⁻¹ (rpm)									Durashift 6-speed manual	Durashift 6-speed manual, optional Durashift 6-speed auto

^oTested in accordance with SAE J1349. ¹⁾Only available on 4x4.

Fuel, performance and emissions

	CO ₂ emissions (g/km) ^{oo}	Fuel consumption mpg (L/100 km) ^{oo}			Performance ^o	
Regular Cab		Urban	Extra Urban	Combined	Max. speed (mph)	0-62 mph (secs)
2.2 Duratorq TDCi (125 PS (92 kW)) 4x2	192	33.2 (8.5)	42.2 (6.7)	38.7 (7.3)	106	13.1
2.2 Duratorq TDCi (125 PS (92 kW)) 4x4	199	34.0 (8.3)	39.2 (7.2)	37.2 (7.6)	109	13.9
2.2 Duratorq TDCi (150 PS (110 kW)) 4x4	206	30.7 (9.2)	40.4 (7.0)	36.2 (7.8)	109	11.6
Super Cab (inc. XLT and Limited)						
2.2 Duratorq TDCi (150 PS (110 kW)) 4x2	209	29.4 (9.6)	39.8 (7.1)	35.3 (8.0)	106	11.2
2.2 Duratorq TDCi (150 PS (110 kW)) 4x4	206	30.7 (9.2)	40.4 (7.0)	36.2 (7.8)	109	11.8
Double Cab (inc. XLT, Limited and Wildtrak)						
2.2 Duratorq TDCi (125 PS (92 kW)) 4x4	199	34.0 (8.3)	39.2 (7.2)	37.2 (7.6)	109	14.9
2.2 Duratorq TDCi (150 PS (110 kW)) 4x4	206	30.7 (9.2)	40.4 (7.0)	36.2 (7.8)	109	12.3
2.2 Duratorq TDCi (150 PS (110 kW)) 4x4 automatic	248	23.7 (11.9)	35.3 (8.0)	30.1 (9.4)	109	12.6
3.2 Duratorq TDCi (200 PS (147 kW)) 4x4	256	23.5 (12.0)	33.6 (8.4)	29.1 (9.7)	109	10.3
3.2 Duratorq TDCi (200 PS (147 kW)) 4x4 automatic	265	22.7 (12.4)	32.8 (8.6)	28.2 (10.0)	109	10.4

^{oo}All CO₂ emissions figures in g/km and fuel consumption figures in mpg (L/100km) are from officially approved tests in accordance with EEC Directive 1999/100/EC. The CO₂ emissions and fuel consumption test figures shown in the chart do not express or imply any guarantee of the emissions or fuel consumption of a vehicle of the class in question. All the figures are based on tests conducted on vehicles with standard wheels and tyres; optional or accessory wheels and tyres may have an effect on the emissions and fuel consumption of a vehicle. **Note:** All vehicles are 6-speed manual unless otherwise stated.

Specifications

Model availability, weights and loads

	Payload Net ^a	Payload Gross ^{aa}	Front Axle plated mass	Rear Axle plated mass	Gross Vehicle Mass (kg)	Kerb weight (kg)*	Rear axle ratio	Max. Trailer Weight Braked (Unbraked)	Max. GTM (kg)
Regular Cab									
2.2 Duratorq TDCi (125 PS (92 kW)) 4x2	1107	1182	1325	1755	2925	1743	3.31	2200 (750)	5125
2.2 Duratorq TDCi (125 PS (92 kW)) 4x4	1265	1340	1480	1850	3200	1860	3.31	1600 (750)	4800
2.2 Duratorq TDCi (150 PS (110 kW)) 4x4	1234	1309	1480	1850	3200	1891	3.55	3500* (750)	5950
Super Cab (inc XLT and Limited)									
2.2 Duratorq TDCi (150 PS (110 kW)) 4x2	1015	1090	1325	1755	2925	1835	3.31	2500 (750)	5425
2.2 Duratorq TDCi (150 PS (110 kW)) 4x4	1179	1254	1480	1850	3200	1946	3.55	3500* (750)	5950
Double Cab (inc XLT, Limited and Wildtrak)									
2.2 Duratorq TDCi (125 PS (92 kW)) 4x4	1104	1179	1480	1850	3200	2021	3.31	1600 (750)	4800
2.2 Duratorq TDCi (150 PS (110 kW)) 4x4	1077	1152	1480	1850	3200	2048	3.55	3500* (750)	5950
2.2 Duratorq TDCi (150 PS (110 kW)) 4x4 automatic	1062	1137	1480	1850	3200	2063	3.73	3500* (750)	5950
3.2 Duratorq TDCi (200 PS (147 kW)) 4x4	1052	1127	1480	1850	3200	2073	3.55	3500* (750)	5950
3.2 Duratorq TDCi (200 PS (147 kW)) 4x4 automatic	1042	1117	1480	1850	3200	2083	3.73	3500* (750)	5950

^a**Payload Net** = Gross vehicle mass, less kerbweight, less allowance of 75 kg for driver. ^{aa}**Payload Gross** = Gross vehicle mass, less kerbweight. **GVM** = Gross vehicle mass. The total permissible all-up weight of a rigid vehicle – i.e. with body, payload, ancillaries, fuel, oil, water, driver and crew. ***Kerbweight** = The weight of the complete vehicle and all equipment including fuel and water, but without the payload, driver or any crew. All kerb masses quoted in this brochure are subject to manufacturing tolerances and are for Base models with minimum equipment. XLT, Limited and Wildtrak models will have greater kerb masses and, therefore, lower payloads due to the increased amount of standard equipment. Any additional options specified on the vehicle will reduce the payload accordingly. **GTM** = Gross train mass. The total permissible all-up weight of a rigid vehicle (see GVM) together with its trailer and load. Trailers of the above capacities should only be used within the plated GTM limits. Dependent on the driveline combination and payload carried by the prime mover, it may not be possible to tow trailers of the maximum capabilities mentioned. A tachograph may be required for towing. An operator's licence may be required if using a vehicle for hire or reward where the kerb weight is in excess of 2040kg. *Max trailer weight applicable from 18/03/2013 production. Prior to this date max trailer weight of 3350kg applies.

Mechanical features

	Regular Cab	Regular Cab XL	Super Cab XL	Super Cab XLT	Super Cab Limited	Double Cab	Double Cab XL	Double Cab XLT	Double Cab Limited	Double Cab Wildtrak
Brakes										
Hydraulic, with vacuum servo-assistance and load apportioning valve	●	●	●	●	●	●	●	●	●	●
Ventilated front discs. Rear drums	●	●	●	●	●	●	●	●	●	●
4-wheel anti-lock brakes and ESP (Electronic Stability Program)	●	●	●	●	●	●	●	●	●	●
Fuel tank										
80 litres	●	●	●	●	●	●	●	●	●	●
Steering										
Power-assisted steering	●	●	●	●	●	●	●	●	●	●
Steering column – Rake adjustable	●	●	●	●	●	●	●	●	●	●
Suspension										
Front – Independent double wishbone coil-over-strut system, with tubular double-acting shock absorbers and anti-roll bar	●	●	●	●	●	●	●	●	●	●
Rear – “Berlin eye” with leaf springs, double-acting shock absorbers	●	●	●	●	●	●	●	●	●	●
Electronic Shift-On-the-Fly (4x4 only)	●	●	●	●	●	●	●	●	●	●

● = Standard, ○ = Option, at extra cost.

Safety, security and driver assistance

	Regular Cab	Regular Cab XL	Super Cab XL	Super Cab XLT	Super Cab Limited	Double Cab	Double Cab XL	Double Cab XLT	Double Cab Limited	Double Cab Wildtrak
Safety and Driver Assistance										
Anti-lock brakes – Electronic, 4-wheel ¹⁾	●	●	●	●	●	●	●	●	●	●
Electronic Stability Programme (ESP) ¹⁾ with Emergency Brake Warning ²⁾ , Emergency Brake Assist ¹⁾ , Load Adaptive Control ¹⁾ , Hill Descent Control (4x4 only), Hill Start Assist ²⁾ , Trailer Sway Control ¹⁾ and Roll Over Mitigation ¹⁾	●	●	●	●	●	●	●	●	●	●
Switchable three stage Traction Control including engine and brake interaction overrides ¹⁾	●	●	●	●	●	●	●	●	●	●
Airbags – Driver’s and front passenger’s ^{♦1)}	●	●	●	●	●	●	●	●	●	●
Airbags – Side airbags ¹⁾	●	●	●	●	●	●	●	●	●	●
Airbags – Thorax airbags ¹⁾	●	●	●	●	●	●	●	●	●	●
Airbags – Driver’s knee bolster airbag ¹⁾	●	●	●	●	●	●	●	●	●	●
Airbag – Front passenger’s airbag de-activation switch ¹⁾	●	●	●	●	●	●	●	●	●	●
Beltminder – Driver’s and front passenger’s ¹⁾	●	●	●	●	●	●	●	●	●	●
Side impact door beams, steel safety cage ¹⁾	●	●	●	●	●	●	●	●	●	●
High Mounted Stop Light	●	●	●	●	●	●	●	●	●	
Locks – Child-proof rear ¹⁾						●	●	●	●	●
Steering column – Collapsible on frontal impact ¹⁾	●	●	●	●	●	●	●	●	●	●
Security										
PATS immobiliser	●	●	●	●	●	●	●	●	●	●
Alarm – Thatcham Cat 1 perimeter and volume sensing	●	●	●	●	●	●	●	●	●	●
Locks – Remote locking	●	●	●	●	●	●	●	●	●	●
Locks – 1 flip key and 1 standard key	●	●	●	●		●	●	●		
Locks – 2 flip keys					●				●	●
Locks – High security, shielded, strengthened mountings; steering column lock	●	●	●	●	●	●	●	●	●	●
Locks – Auto locking on drive-away, doors automatically lock above a set speed (approx. 5mph; customer configurable)	●	●	●	●	●	●	●	●	●	●
Locks – Tailgate lock		●	●	●	●		●	●	●	●
Vehicle component markings – DPF/Catalyst/Glass	●	●	●	●	●	●	●	●	●	●
Vehicle Identification Number (VIN) – visible and hidden	●	●	●	●	●	●	●	●	●	●

● = Standard, ○ = Option, at extra cost. ¹⁾Safety feature. ²⁾Driver assistance feature. ***Note: A rear-facing child seat should never be placed in the front passenger seat when the Ford vehicle is equipped with an operational front passenger's airbag.**

Specifications

Exterior features

	Regular Cab	Regular Cab XL	Super Cab XL	Super Cab XLT	Super Cab Limited	Double Cab	Double Cab XL	Double Cab XLT	Double Cab Limited	Double Cab Wildtrak
Design features										
Door mirrors – Electrically-operated, black housings	●					●				
Door mirrors – Electrically-operated and heated, black housings		●	●				●			
Door mirrors – Electrically-operated and heated, chrome finish housings				●				●		
Door mirrors – Electrically-operated and heated, chrome finish housings and side indicators					●				●	
Door mirrors – Electrically-operated and heated, titanium painted housings and side indicators										●
Door mirrors – Power-foldable				●				●		
Door mirrors – Power-foldable with puddle lights					●				●	●
Door and tailgate handles – Self colour black	●	●	●			●	●			
Door and tailgate handles – Chrome finish				●	●			●	●	
Door and tailgate handles – Black										●
Doors – Two cabin side rear doors, outward opening with no B pillar			●	●	●					
Roof rails – Aluminium finish										●
Front bumper – Black	●	●	●			●	●			
Front bumper – Body colour				●	●			●	●	●
Front bumper – Sports highlighting										●
Rear bumper – Under-bar, black (4x4 only)	●	●	●			●	●			
Rear bumper – Under-bar, chrome finish				●				●		
Rear bumper – Stepped steel bumper, chrome finish					●				●	
Rear bumper – Stepped steel bumper, titanium finish										●
Front grille – Silver painted	●	●	●			●	●			
Front grille – Chrome finish				●	●			●	●	
Front grille – Wildtrak accent										●
Heated rear window	●	●	●	●	●	●	●	●	●	●
Mudflaps – Front					●				●	●
Mudflaps – Rear (not available on Chassis Cab)	●	●	●	●	●	●	●	●	●	●
Tinted glass (71% luminous transmittance)	●	●	●	●	●	●	●	●	●	●
Privacy glass – Rear (52% luminous transmittance)					●				●	●
Bright finish on upper door surround					●				●	
Metallic paint	○	○	○	○	○	○	○	○	○	○
Side bar – Polished chrome finish, full length				●				●		
Side steps – Polished chrome finish, full length					●				●	
Side steps – Wildtrak accent, full length										●
Sports bar – Chrome, tubular				○	●			○	●	
Delete Sports bar – Chrome, tubular					○				○	
Sports bar – Composite aerodynamic										●
Fender grille with side indicators	●	●	●	●		●	●	●		
Fender grille – Chrome finish surround with logo					●				●	
Fender grille with logo										●
XL badge – Tailgate-mounted		●	●				●			
XLT badge – Tailgate-mounted				●				●		
Limited badge – Side and tailgate-mounted					●				●	
Wildtrak badge – Side and tailgate-mounted										●

Exterior features

	Regular Cab	Regular Cab XL	Super Cab XL	Super Cab XLT	Super Cab Limited	Double Cab	Double Cab XL	Double Cab XLT	Double Cab Limited	Double Cab Wildtrak
Wheels										
Steel – 16"x6.5" wheels with 215/70 R16C All Terrain tyres (4x2 only)		●	●							
Steel – 16"x7" wheels with 255/70 R16 All Terrain tyres (4x4 only)	●	●	●			●	●			
Alloy – 16"x7" wheels with 255/70 R16 All Terrain tyres				●				●		
Alloy – 17"x8" wheels with 265/65 R17 All Terrain tyres					●				●	
Alloy – 18"x8" wheels with 265/60 R18 All Terrain tyres										●
Locking wheel nuts				●	●			●	●	●
Steel spare wheel with tool kit	●	●	●	●	●	●	●	●	●	
Alloy spare wheel with tool kit and lock										●
Convenience features										
Ford Easy-Fuel capless refuelling system with misfuel inhibitor	●	●	●	●	●	●	●	●	●	●
Halogen headlights, side lights, reversing light	●	●	●	●	●	●	●	●	●	●
Headlights – Halogen with black bezels	●	●	●			●	●			●
Headlights – Halogen with bright chrome bezels				●	●			●	●	
Headlights – Day running	●	●	●	●	●	●	●	●	●	●
Front fog lights				●	●			●	●	●
Rear fog light	●	●	●	●	●	●	●	●	●	●
Parking distance sensors – Rear					●				●	●
Rear-view camera (displayed on rear-view mirror)										●
Wipers – Front, speed-sensing intermittent	●	●	●			●	●			
Wipers – Automatic with rain sensor (including automatic headlights)				●	●			●	●	●
Windscreen – Heated, with heated washer jets				●	●			●	●	●
Digital tachograph sensor port (4x4 only)	●	●	●	●	●	●	●	●	●	●
Digital tachograph fascia mounted	-	○	○	○	○	-	○	○	○	○
Pick-up box										
Pick-up box – Steel, double-skinned, with drop-down tailgate	●	●	●	●	●	●	●	●	●	●
Tailgate locking		●	●	●	●		●	●	●	●
Pick-up box – Load rest with folding end stops	●	●	●	●	●	●	●	●	●	
Pick-up box – DIN compliant outer tie down hooks♦	●	●	●	●		●	●	●		
Pick-up box – DIN compliant inner tie down hooks♦	●	●	●	●	●	●	●	●	●	●
Pick-up box – C-channel cargo management tie down system					●				●	●
Pick-up box – Accessory power socket (12V)					●				●	●
High performance bedliner with protective side walls				●	●			●	●	●
Roll Top lockable cover 'Wildtrak'										○
Hardtop with side windows							○	○	○	
Hard tonneau cover – 1 piece design (GRP)							○	○	○	
Aluminium tonneau cover – 3-piece design, foldable (alloy)							○	○	○	
Soft tonneau cover			○	○	○		○	○	○	
Tow bar (4x2)		○	○							
Tow bar (4x4)		○	○	○			○	○		
Tow bar with integrated stepped steel bumper					○				○	○

● = Standard, ○ = Option, at extra cost. ♦Tie-down loops comply with DIN 75410.

Specifications

Interior features

	Regular Cab	Regular Cab XL	Super Cab XL	Super Cab XLT	Super Cab Limited	Double Cab	Double Cab XL	Double Cab XLT	Double Cab Limited	Double Cab Wildtrak
Design features										
Centre audio stack bezel – Silver Graphite finish				●	●			●	●	
Centre audio stack bezel – Tinted Charcoal finish										●
Door trim – Cloth insert	●	●	●			●	●			
Door trim – Premium fabric insert				●				●		
Door trim – Leather inserts					●				●	
Door trim – Leather inserts with orange stitching										●
Door trim – Chrome-finish window switches and inner door handles				●	●			●	●	●
Floor covering – Vinyl ¹⁾	●	●	●			●	●			
Floor covering – Carpeted				●	●			●	●	●
Floor mat – carpet (driver only)				●				●		
Floor mats – Premium carpet with 'RANGER' logo					●				●	
Floor mats – Premium carpet with 'Wildtrak' logo										●
Gearshift knob – Leather-wrapped with satin chrome insert				●	●			●	●	●
Scuff plates – Polished steel				●				●		
Scuff plates – Chrome-effect, Ranger logo					●				●	
Scuff plates – Chrome-effect, Wildtrak logo										●
Steering wheel – 4-spoke, incorporating horn function	●	●	●			●	●			
Steering wheel – Leather-trimmed with steel graphite inserts with remote audio and cruise controls				●	●			●	●	
Steering wheel – Leather-trimmed with Wildtrak orange stitching and tinted charcoal inserts with remote audio and cruise controls										●

Interior features

	Regular Cab	Regular Cab XL	Super Cab XL	Super Cab XLT	Super Cab Limited	Double Cab	Double Cab XL	Double Cab XLT	Double Cab Limited	Double Cab Wildtrak
Audio and communication systems										
Radio/CD with multi-functional display, MP3-compatible CD, 2-line display, two speakers and AUX connection for external music devices	●	●	●							
Radio/CD with multi-functional display, MP3-compatible CD, 2-line display, four speakers and AUX connection for external music devices						●	●			
Radio/CD with multi-functional display, MP3-compatible, matrix display, six speakers, remote audio controls, AUX and USB connection for external music devices, Bluetooth® Hands-Free Telephone, Bluetooth® audio streaming and Voice Control System				●					●	
Radio/CD with colour multi-functional display, MP3-compatible, 4.2" colour matrix display, six speakers, remote audio controls, AUX and USB connection for external music devices, Bluetooth® Hands-Free Telephone, Bluetooth® audio streaming and Voice Control System					●				●	
Radio/CD/SD-navigation system with colour multi-functional display, MP3-compatible, 5" colour matrix display, six speakers, remote audio controls, AUX and USB connection for external music devices, Bluetooth® Hands-Free Telephone, Bluetooth® audio streaming and Voice Control System					○				○	●
Climate control										
Air conditioning – Manual control, CFC-free (4x4 only)		○	○	●			○	●		
Air conditioning – Dual-zone Electronic Automatic Temperature Control (DEATC)					●				●	●

Specifications

Interior features

	Regular Cab	Regular Cab XL	Super Cab XL	Super Cab XLT	Super Cab Limited	Double Cab	Double Cab XL	Double Cab XLT	Double Cab Limited	Double Cab Wildtrak
Comfort and convenience										
Instruments – Speedometer, fuel gauge, water temperature gauge and tachometer	●	●	●	●	●	●	●	●	●	●
Instruments – Trip computer (includes distance to empty – average fuel economy – instant fuel economy – average speed – outside temperature and two trip meters)	●	●	●	●	●	●	●	●	●	●
Warning indicators for oil pressure, direction indicators, water in fuel, high beam, ignition/alternator, brake failure, airbags, glow plugs, free-wheel hubs (4x4 only), rear fog light and 'lights on' audible warning	●	●	●	●	●	●		●	●	●
Cruise control				●	●			●	●	●
Headlight levelling control	●	●	●	●	●	●	●	●	●	●
Control stalks – Column-mounted for master lights, indicators and wash/wipe functions	●	●	●	●	●	●	●	●	●	●
Accessory power socket (12V) – Front, two	●	●	●	●	●	●	●	●	●	●
Accessory power socket (12V) – Rear, one					●				●	●
Armrest – Centre console-mounted, with storage box	●	●	●	●	●	●	●	●	●	●
Centre console – Front, double lidded with coin storage box and dual cup holders	●	●	●	●	●	●	●	●	●	●
Centre console – Front cool box with premium lid cover					●				●	●
Cupholders – Rear							●	●	●	●
Courtesy light – For front passengers, overhead with theatre-style dimming	●	●	●	●	●	●	●	●	●	●
Overhead console, with map reading lights and sunglasses holder				●	●			●	●	●
Overhead console, mood lighting					●				●	●
Ambient lighting with iluminated stowage bin					●				●	●
Courtesy light – 'Ice Blue' ambient interior lighting with dimming control					●				●	●
Rear-view mirror – Auto-dimming, automatic (electrochromic)				●	●			●	●	●
Glovebox – Illuminated	●	●	●	●	●	●	●	●	●	●
Grab handle – Front, passenger's side (4x4 only)	●	●	●	●	●	●	●	●	●	●
Storage – Front door pockets	●	●	●	●	●	●	●	●	●	●
Storage – Rear quarter panel pockets			●	●	●					
Storage pocket – Front passenger's seat back	●	●	●			●	●			
Storage pocket – Driver's and front passenger's seat back				●	●			●	●	●
Storage bin – Illuminated				●	●			●	●	●
Sunvisors – Two with ticket holders on driver's side	●	●	●	●	●	●	●	●	●	●
Sunvisors – Vanity mirror on passenger's side				●	●			●	●	●
Windows – Electrically-operated, with one-touch lowering/closing and anti-trap feature on driver's door	●	●	●	●	●	●	●	●	●	●
Windows – Rear, electrically-operated with driver's disable switch							●	●	●	●

Interior features

	Regular Cab	Regular Cab XL	Super Cab XL	Super Cab XLT	Super Cab Limited	Double Cab	Double Cab XL	Double Cab XLT	Double Cab Limited	Double Cab Wildtrak
Seats and seat belts										
Front seats – Driver's tilt adjustment and height-adjustable head restraints	●					●				
Front seats – Driver's manual height and tilt adjustment, with lumbar support adjustment and with height-adjustable head restraints		●	●	●	●		●	●		
Front seats – Driver's power height, fore/aft, backrest angle and tilt adjustment (includes lumbar support adjustment)									●	●
Front seat – Heated driver and passenger					●				●	●
Rear seats – Jump			●	●	●					
Rear seats – Three across seating with height-adjustable head restraints and centre armrest							●	●	●	●
Seats – Cloth trim	●	●	●	●		●	●	●		
Seats – Leather trim					●				●	●
Seat belts – Front, 3-point with pre-tensioners and load-limiters	●	●	●	●	●	●	●	●	●	●
Seat belts – Front, driver and passenger's D-ring shoulder height adjustable						●	●	●	●	●
Seat belts – Rear, two 3-point diagonal inertia reel with grabbers			●	●	●					
Seat belts – Rear, three 3-point diagonal inertia reel with grabbers						●	●	●	●	●
Rear seat – ISOFIX						●	●	●	●	●

● = Standard, ◯ = Option, at extra cost. P36: ¹A limited number of vehicles will be fitted with carpet interiors, please check with your dealer for specific vehicle specification.

Colour and trim

Choosing the colour and trim for your Ford Ranger is an opportunity to make it just exactly that – yours!



Frozen White
Solid body colour



Moondust Silver
Metallic body colour*



Ocean¹⁾
Metallic body colour*



Panther Black
Metallic body colour*



Colorado Red¹⁾
Solid body colour



Thunder¹⁾
Metallic body colour*



Performance Blue¹⁾
Metallic body colour*



Wildtrak Orange²⁾
Metallic body colour*



Copper Red¹⁾
Metallic body colour*



Sea Grey
Metallic body colour*



Ranger/XL

Limewire fabric in River Rock (seat insert)
Pulse fabric in River Rock (seat bolster)

XLT

Catalyst fabric in River Rock (seat insert)
Catalyst fabric in River Rock (seat bolster)

Limited

Soho Grain leather in River Rock (seat insert)
Ford Mini perforated over Soho in River Rock (seat bolster)

Wildtrak

Journey Grain leather in Ebony (seat insert)
Endurance fabric in Ebony

*Metallic body colours are options at extra cost.

¹⁾Not offered on Wildtrak.

²⁾Wildtrak only.

The Ford Ranger is covered by the Ford Perforation Warranty for 12 years from the date of first registration. Subject to terms and conditions.

Note The vehicle images used are to illustrate body colours only and may not reflect current specification. Colours and trims reproduced within this brochure may vary from the actual colours, due to the limitations of the printing processes used.



MY 2013.5 GBR en

Illustrations, descriptions and specifications. This catalogue was correct at the time of going to print. However, Ford policy is one of continuous product development. The right is reserved to change specifications, colours and prices of the models and items illustrated and described in this publication at any time. For the latest details always consult your Ford Dealer. **Optional equipment.** Throughout this publication, wherever a feature is described as being an 'Option' or 'Option Fitment/Pack' etc, you should assume that it will be at extra cost to the base vehicle, unless specifically stated to the contrary. All models and colour combinations are subject to availability. **Note.** Some images portrayed are of a pre-production model and/or are computer generated, therefore, the design/features on the final version of the vehicle may differ in various respects. In addition, some of the features shown on the vehicles may be optional. **Note.** This brochure contains both original Ford accessories as well as a range of products from our suppliers. **★**The identified accessories are carefully selected third party supplier branded accessories which do not come with a Ford warranty but are instead covered by the third party supplier's own warranty, the details of which can be obtained from your Ford Dealer. **Note.** The Bluetooth® word mark and logos are owned by the Bluetooth SIG, Inc. and any use of such marks by Ford Motor Company is under licence. The iPod word mark and logos are the property of Apple Inc. Other trademarks and trade names are those of their respective owners. **Note.** Some driver assistance features and safety features described in this brochure are designed to function using sensors, whose performance may be affected under certain weather or environmental conditions.

The Government fuel figures do not express or imply any guarantee of the fuel consumption of any particular vehicle. The vehicles themselves have not been tested and there are inevitably differences between individual vehicles of the same model. In addition, a vehicle may incorporate particular modifications. Furthermore, the driver's style and road and traffic conditions, as well as the extent to which the vehicle has been driven and the standard of maintenance, will affect its fuel consumption. **Insurance groups** are only as recommended by the Association of British Insurers. You should always consult your insurance adviser for confirmation.

Note Some driver assistance features and safety features described in this brochure are designed to function using sensors, whose performance may be affected under certain weather or environmental conditions.



Ford and BP – working together to reduce fuel consumption and emissions.



Collect Nectar points at participating Ford Dealers and Authorised Repairers now. So take a look at the latest Ford Service Promotions by visiting the Owner Services section within www.ford.co.uk.



Finance and Insurance

Ford Credit Customer Services 0845 712 5490
Ford Lease Customer Services 0844 600 1405
Ford Insure 0800 048 0957

Published by Ford Motor Company Limited, Brentwood, Essex, England.
Registered in England No. 235446.

FA 1545/7

BJN 202401. FoE H44E.
PN 277520/0213/8m/GBR en
January 2013.

© Ford Motor Company Limited.

www.ford.co.uk