

FORD KA



Go Further

## Go Further

These two words capture the spirit of Ford and our commitment to you. We go further so that you can, too.

**2-9**

### Ford kinetic Design

Ford kinetic Design is the reason why our vehicles look more exciting than ever before. Bold, dynamic lines that create energy in motion.

**10-13**  
**Quality**

We design and build your Ford to feel as good after many years of service as it did the day you picked it up. And to drive just as beautifully, too.



**14-15**  
**Green**

Using advanced Ford ECONetic Technology, we're committed to creating vehicles with improved fuel economy, reduced CO<sub>2</sub> emissions and a lower overall cost of ownership.



**11**  
**Safe**

Ford's Intelligent Protection System uses sophisticated technology designed to help prevent an accident and, if one should happen, to protect you.



**16-17**  
**Smart**

Cars that park themselves, windscreen wipers that know when it's raining – just some of the many clever solutions from Ford that make life a little easier.



**18-29**  
**Choose your Ford Ka**

- Studio/Studio Connect
- Edge
- Zetec
- Titanium
- Grand Prix III
- Metal-Ka

**30-31**  
**The range**

**32-39**  
**Add those extra touches**

- Wheels
- Audio and connectivity
- Exterior style
- Interior style

**40-47**  
**Specifying your Ford Ka**

**48-50**  
**Colour and trim**

**51**  
**Ownership**





**Listen up!**

Rue de Oreilles  
Par un artiste inconnu

Great design speaks for itself. Ford Ka's cheeky shape says everything about its personality.

Model shown is a Ford Ka Titanium in Flame with body colour rear spoiler (option).





## In the air tonight

Leichtmetallräder Straße

Der unbekannte Künstler

Make contact with state of the art sound and communication.

Model shown is a Ford Ka Titanium in Flame with Coral/Syracuse interior, Bluetooth® and USB (option) and ESP (option).





## Magic roundabout

Via Volante

Da un artista sconosciuto

Very few cars have it. The ability to turn a short spin into a wide open grin.

Model shown is a Ford Ka Titanium with Scuba metallic paint (option) and body colour rear spoiler (option).





## Flotation Tank

Airbag Fountain  
An unknown artist

So many reasons to love it. The way it looks. The way it drives. And the way it protects.

Model shown is a Ford Ka Titanium with Piste special metallic paint (option) and panorama roof (option)







**Leather seats**  
Beautifully stitched in your choice of two seat colours. Shown here in Syracuse. (Option on Titanium)

Look beneath the Ford Ka's stunning exterior. You'll find a different kind of beauty composed of strength, obsessive attention to detail and quality that's built to last.

**Hidden strength.  
Visible beauty**



#### **A monument to quality**

Ford Ka went on a fantastic 1.5 million kilometre European vacation – from baking 40°C heat to lung-straining 1,522-metre altitudes – to prove its durability. Cádiz to Madonna Di Campiglio anyone..

#### **Intelligent Protection System**

Beneath the steel safety cage lies a comprehensive airbag system, three-point seat belt pre-tensioners and collapsible steering column and pedals. All designed to spring into action in a fraction of a second.

#### **Airbags**

Driver's and front passenger's airbags are standard. Curtain airbags (including side) are optional.

#### **ISOFIX**

Anchorage for quick and safe fitting of child seats in the rear.

#### **Emergency Brake Assist (EBA)**

Designed to automatically sense when you brake hard and to provide additional braking force.

#### **Emergency Brake Warning**

Front and rear indicators automatically flash during heavy braking, giving other drivers advance hazard warning.

#### **Rear parking sensor**

An audible warning helps you to safely judge parking distances. (Option)

#### **Tyre mobility kit**

The easy way to reach your destination after a puncture. No more changing wheels. Simply plug it in and your tyre inflates. (Standard)



\*Note: A child seat should never be placed in the front passenger seat when the Ford vehicle is equipped with an operational front passenger's airbag. The safest place for a child is when appropriately restrained on the rear seat.

#### **Quality that's clear to see**

Every Ford Ka features a high-quality paint finish but Piste body colour comes with a special metallic 3-coat paint process for an even more premium appearance. (Option on Zetec, Titanium and Metal)



#### **Pearl White instrument panel**

Shown here with Electronic Automatic Temperature Control (EATC, standard on Titanium).







**The next generation of power steering**  
Ford Ka's sophisticated new Electric Power-Assisted Steering (EPAS) delivers full power when you park for feather-light manoeuvring. When you're on the move, the EPAS system automatically adjusts to provide optimum feel and control.



Glued to the road and looking great. Surrounded by clever features and securely seated even in the tightest bend. You'll never want to get out.

Get out more.  
Stay in



**Gear Shift Indicator Light**  
Advises you when to change gear for maximum fuel efficiency.



**Ford Auto-Start-Stop system**  
When idling, the engine automatically shuts down to save fuel. When you want to drive off, the engine immediately restarts. (Standard)

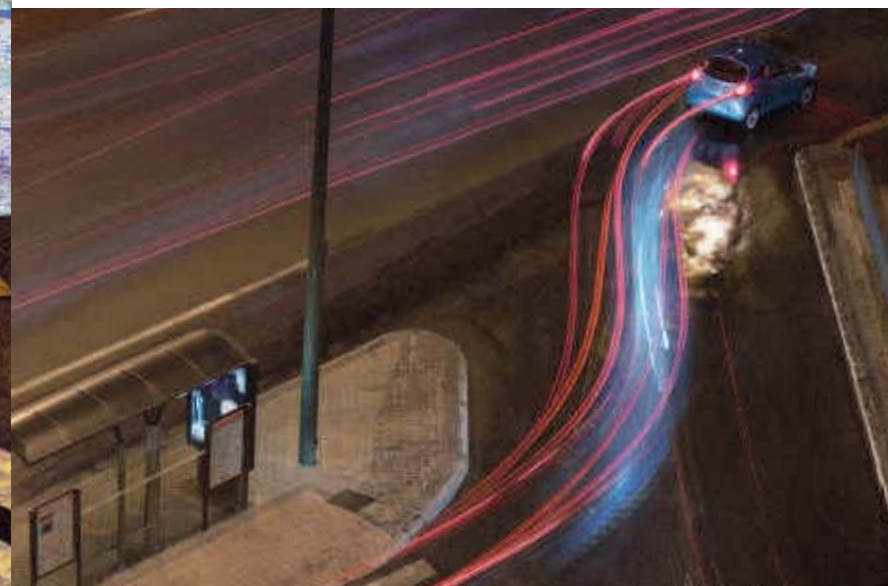


**Ford-tuned suspension**  
Only Ford's famous development team can make a car react so instantly and accurately to your command, making it feel like an extension of you.

**Maximum speed alert**  
You set the speed, and a flashing light and audible alarm are designed to warn you if you exceed this speed. (Standard on Studio Connect, Zetec and all series above).



**Hill Start Assist**  
Designed to keep the car still so you can hill start without using the handbrake. (Option, as part of Electronic Stability Control)





Ford ECONetic Technology is designed to reduce your cost of ownership through improved fuel economy and lower CO<sub>2</sub> emissions, without any compromise on style or driving quality. Much of this technology is brought together in our ECONetic models, which deliver some of the lowest fuel consumption and CO<sub>2</sub> emissions in the Ford range. In the near future our ECONetic Technology will expand to include electric and hybrid-electric vehicles, biofuel-capable vehicles, plug-in hybrids and hydrogen fuel cell-powered vehicles.

## What can Ford ECONetic Technology do for you?



### Ford ECONetic Technology

- Ford EcoBoost fuel-efficient petrol engines (see right)
- Ford Duratorq TDCi advanced diesel engines – provide exceptional fuel economy and low CO<sub>2</sub> emissions
- Ford PowerShift dual clutch automatic transmission – combines the efficiency of manual transmission with the convenience of a conventional automatic
- Ford Auto-Start-Stop (see right)
- Ford Smart Regenerative Charging – Saves fuel by charging the battery only when you are not pressing the accelerator
- Ford Electric Power-Assisted Steering – a more efficient system that uses less engine power
- Active Grille Shutter – improves aerodynamics and lowers fuel consumption
- Ford Eco Mode driver information system – shows you when you're achieving optimum fuel efficiency
- Shift indicator – advises you when to change gear for maximum fuel efficiency

### Ford EcoBoost

With direct petrol injection, turbocharging and variable valve timing, Ford EcoBoost engines deliver power and torque consistent with larger displacement engines. For example, the 1.6 150 PS EcoBoost engine in the C-MAX and Grand C-MAX has more power than the 2.0 Duratec petrol engine it replaces, and yet it achieves around 9% better fuel economy and lower CO<sub>2</sub> emissions.

### Ford Auto-Start-Stop

When your vehicle is idling at a standstill, the engine automatically shuts down to save fuel consumption. When you want to drive off, the engine immediately restarts.

### Electric and Hybrid vehicles

Our electrically-powered vehicles will produce zero emissions. Rechargeable through wall outlets and targeted to get up to 100 miles per charge, they'll be ideal for a daily commute and trips around town. In addition, two next-generation hybrid models are under development



## Working for a cleaner tomorrow

At Ford, we've been quietly and consistently reducing our impact on the environment. Here are just a few headlines:

- Since 2000, we've reduced manufacturing plant energy consumption by over 27% and CO<sub>2</sub> emissions by 31% worldwide
- Between 2003 and 2008, Ford reduced water consumption in its plants across Europe by 40%
- Solar/photovoltaic panels on the roof of our Bridgend engine plant in the UK generate enough power to light an area of around 10,000 square metres
- Almost 300 parts used in European Ford vehicles are made from recycled non-metallic materials – potentially avoiding 17,000 tonnes of waste going to landfill sites every year

All electricity needed to power Ford's Dagenham Diesel Centre is provided by three wind turbines, each over 85m high. With a combined maximum output of 5.9MW, they generate over 11.4million KWh of electricity every year, enough to power around 3400 homes.

Our Cologne plant utilises hydro-electric power from Norway and Sweden. This reduces CO<sub>2</sub> emissions by 190,000 tonnes a year. shipping their finished vehicles on Rhine river barges means fewer truck journeys and less fuel consumed to further reduce CO<sub>2</sub> emissions.



If you wish to know more, logon to:  
[ford.com/go/sustainability](http://ford.com/go/sustainability)





**Premium trip computer**  
Average speed and fuel consumption, trip time and distance, range and outside temperature. (Standard on Studio Connect, Zetec and all above series).



Connected to your friends, connected to your music and with a console that looks this amazing, connected to your car.

Tune in.  
Chill out



#### Bluetooth® and USB

It's the coolest way to stay in tune and in touch, wherever your Ford Ka takes you. This optional feature which is part of the connectivity pack includes:

- Built-in USB port (deletes aux jack)
- Bluetooth® wireless technology
- Voice Control System\*
- MP3 and MP4 file compatibility
- iPod® and iPhone® compatibility
- SMS voice message reader\*



#### Remote audio controls

Convenient toggle switches on the steering wheel let you control the system's key functions with ease. (Available as part of connectivity pack)



The Bluetooth® word mark and logos are owned by the Bluetooth SIG, Inc. and any use of such marks by Ford Motor Company Limited and its associated companies is under licence. Other trademarks and trade names are those of their respective owners.

Pearlescent console shown with silver gear knob insert and air vent rings and EATC is standard on Ford Ka Titanium. Optional feature ESP is shown.

\*To check Bluetooth®-enabled phone compatibility, please contact your Ford Dealer or visit [www.ford.co.uk](http://www.ford.co.uk)





# Studio/Studio Connect



Image above: Model shown is a Ford Ka Studio Connect with Flame paint.

Image opposite: Model shown is a Ford Ka Studio with Fairland/Syracuse interior environment.

Great to look at. Great to drive. And bursting with character, Studio and Studio Connect are the perfect intro to new Ford Ka.

## Studio Features:

- Stereo radio/CD player with MP3, AUX in connection and 4 speakers
- Body colour bumpers
- Headlight courtesy delay
- Tinted glass
- Electric Power-Assisted Steering (EPAS)
- Intelligent Protection System (IPS) with driver's and front passenger's airbags\*
- Anti-lock braking system (ABS) with electronic brake-force distribution (EBD)
- Accessory power socket (12V)
- Tilt-adjustable steering column
- Tyre mobility kit
- ISOFIX
- Rear seat head restraints

\*Note: A child seat should never be placed in the front passenger seat when the Ford vehicle is equipped with an operational front passenger's airbag. The safest place for children is properly restrained on the rear seat.

## Studio Connect Features:

Additional to Studio

- 14" 4x2-spoke alloy wheel
- Connectivity Pack Includes: Bluetooth, steering wheel audio controls, & USB connectivity (Less AUX connectivity)
- Premium Trip Computer

**Body colour bumpers**  
(Standard)

**Headlight courtesy delay**  
The headlights stay on for a few seconds to illuminate the way to your front door. (Standard)

**Trip computer**  
Tells you your range, distance covered, average speed and fuel consumption, plus the time you've been on the road. (Standard)

**Floor console with cup holder**  
(Standard)

**AUX in connection**  
Lets you connect your MP3 player to the car's audio system. (Standard on Studio). (USB replaces AUX in on Studio Connect)

**Remote audio controls**  
(Standard on Studio Connect)







Image above: Model shown is a Ford Ka Edge with Strobe metallic paint (option).

Image opposite: Model shown is a Ford Ka Edge with Syracuse/Fairland interior environment.

## Edge



Want more? Have it. Edge gives you remote control, power operation and extra clever features. Go on, spoil yourself.

### Additional to Studio:

- Body colour door mirror housings
- Body colour door handles and tailgate handle
- Air conditioning
- Electrically-operated front windows, one-shot-down driver's window
- Remote central locking with retractable key
- Driver's seat with manual height adjustment
- Driver and passenger seatback map pockets

Body colour door handles  
(Standard)



Body colour door mirror housings  
(Standard)



Body colour tailgate handle  
(Standard)



Remote central locking with  
retractable key  
(Standard)



China white door inserts  
(Standard)



Electrically-operated front windows  
(Standard)







Image above: Model shown is a Ford Ka Zetec with Midnight metallic paint (option).

Image opposite: Model shown is a Ford Ka Zetec with Coral/Syracuse interior environment, and optional Connectivity Pack.

## Zetec



If you're looking for the ultimate new Ford Ka, look no further.

### Additional to Edge:

- 15" multispoke alloy wheels
- Body colour door mirror housings with power-operated and heated mirrors
- Front fog lights
- Privacy glass
- Pearl White inserts on steering wheel spokes
- Silver insert on gearshift knob
- Quickclear heated windscreen
- Premium trip computer
- Theatre style courtesy light dimming
- Front and rear premium velour mats
- Headliner stowage net
- Flexible accessory holder
- Leather-trimmed steering wheel
- 50:50 split/folding rear seatbacks

**Flexible accessory holder**  
Fits around the centre console – with a net on either side. (Standard)

**Front fog lights**  
(Standard)

**Premium velour mats**  
(Standard)

**Premium leather-trimmed steering wheel with Pearl White insert**  
(Standard)  
Image shown with optional Connectivity Pack

**Premium trip computer**  
Average speed and fuel consumption, trip time and distance, range and outside temperature. (Standard)

**Pearl White centre console**  
(Standard)







Image above right: Model shown is a Ford Ka Titanium with Piste special metallic paint (option).

Image opposite: Model shown is a Ford Ka Titanium with Fairland/Syracuse interior environment and optional Connectivity Pack

## Titanium



With Titanium, you're getting into premium equipment levels that would embarrass many much larger cars.

### Additional to Zetec:

- 16" 5 Y-spoke alloy wheels
- Advanced Music Pack – including stereo radio/CD player with MP3, AUX jack, subwoofer, amplifier and six premium speakers (deletes underseat stowage)
- Electronic Automatic Temperature Control (EATC)
- Chrome finish door handles and tailgate handle
- Chrome finish exhaust pipe
- White painted gearknob with leather and chrome inserts.

**16" 5 Y-spoke alloy wheels**  
(Standard)



**Premium leather steering wheel with Pearl White insert**  
(Standard)  
(Image shown includes optional Connectivity Pack)



**Chrome finish door handles**  
(Standard)



**Chrome tailgate handle**  
(Standard)



**Chrome finish exhaust pipe**  
(Standard)



**Gearshift knob in Pearl White with leather insert**  
(Standard)







You have the chance to personalise your Ford Ka and stand out from the crowd. Choose from two distinctive themes starting with the sports-inspired Grand Prix III



## Ford Individual: Grand Prix III

**Features** (as Zetec plus):

- 16" 5 Y-spoke Black alloy wheels
- Body colour rear spoiler
- Chrome finish exhaust pipe
- High gloss black front bumper grille surround and door mirror caps
- Unique black fabric seats with red vinyl inserts
- Red/Black head restraints
- Piano Black centre stack bezel
- Syracuse leather steering wheel with red stitching and piano black bezel
- Silver gearshift knob with Syracuse leather, red stitching and chrome finish inserts
- Black leather handbrake handle with Red stitching and chrome finish rings
- Black velour floor mats with red double stitching

\*Grand Prix III is available in Flame & Midnight.



Unique seat design



Image left: Model shown is a Grand Prix Ka III with Bluetooth® and USB (option as part of Connectivity Pack) Image right: Model shown is a Grand Prix Ka III with Flame body paint.

**Black Leather Handbrake handle**  
Red stitching and chrome finish rings.  
(Also available as an accessory)

**Premium velour mats**  
Black velour floor mats with red double stitching. (Standard)

**Contrasting door mirror caps**  
Black painted

**Chrome finish exhaust pipe**

**Body colour rear spoiler**  
(Standard)

**16" 5 Y-spoke alloy wheel in black**  
(Standard)







Strong, cool and sophisticated. Metal Ka is always in style.



Ford Individual:  
Metal Ka

- Features** (as Zetec, plus):
- 16" 5 Y-spoke alloy wheels
  - B-pillar decal in black with chrome finish Ka logo
  - Chrome finish door handles and tailgate handle
  - Chrome finish exhaust pipe
  - Unique seat design in Black/Raptor fabric with chrome-look rings in black inserts
  - Black Fabric head restraints and door inserts
  - Piano Black instrument cluster housing, centre stack bezel, gearshift bezel, door pulls and flexible accessory holder
  - Chrome finish air vent rings
  - Syracuse leather-trimmed steering wheel with Silver stitching and Piano Black bezel
  - Syracuse leather-trimmed handbrake handle with black stitching and chrome finish rings
  - Piano Black gearshift knob Syracuse leather, chrome finish inserts and Syracuse gaiter
  - Black velour floor mats with aluminium 'Ka' logo
  - Door release lever in chrome finish



**Unique seat fabric design**  
In Black/Raptor fabric with chrome-look rings, and black head restraints.



Image right: Model shown is a Metal Ka in Midnight metallic paint finish (option) with 16" metallic black alloy wheels (option and accessory).

Image opposite: Model shown is a Metal Ka with Connectivity Pack and ESP (all available as options).

**Syracuse leather handbrake handle**  
With Black stitching and chrome finish rings.  
(Standard)

**Black velour floor mats**  
With aluminium 'Ka' logo. (Standard)

**Chrome finish air vent rings**

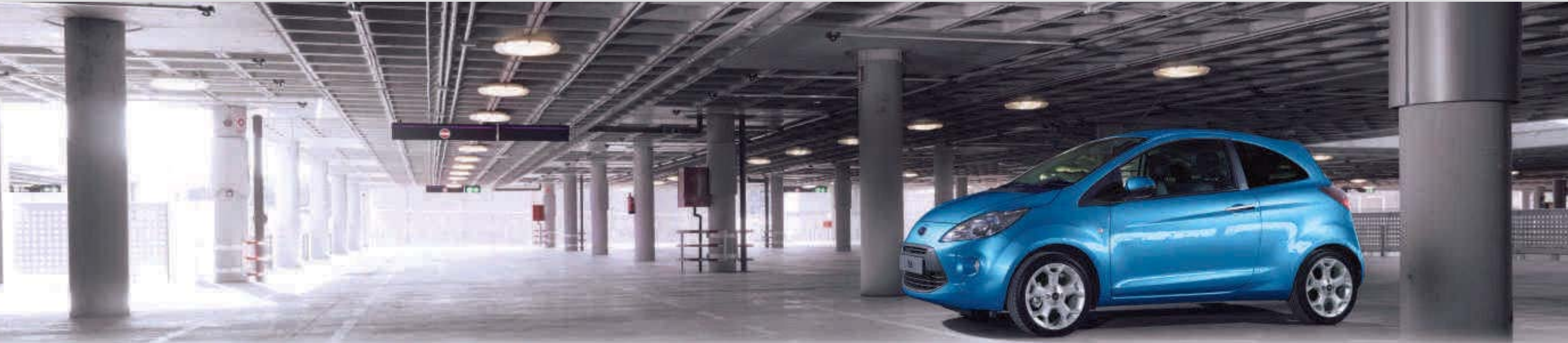
**B-pillar decal**  
In black with chrome finish Ka logo.

**Chrome finish details**  
On exhaust pipe and tailgate handle.

**16" 5 Y-spoke alloy wheels**  
(Standard)







Studio

Features:

- 14" 6-spoke wheel covers
- Body colour bumpers
- Stereo radio/CD player with MP3, AUX jack and 4 speakers
- Headlight courtesy delay
- Tinted glass
- Electric Power-Assisted Steering (EPAS)
- Intelligent Protection System (IPS) with driver's and front passenger's airbags\*
- Anti-lock braking system (ABS) with electronic brake-force distribution (EBD)
- Accessory power socket (12V)
- Height-adjustable steering column
- Tyre mobility kit
- Rear seat head restraints
- Integrated ISOFIX child seat mounts in rear seats

Studio Connect

Additional to Studio

- 14" 4x2-spoke alloy wheels
- Connectivity Pack Includes: Bluetooth, steering wheel audio controls & USB connectivity
- Premium Trip Computer

Edge

Additional to Studio:

- Air conditioning
- Body colour door mirror housings
- Body colour door handles and tailgate handle
- Electrically-operated front windows, one-shot-down driver's window
- Remote central locking with retractable key
- Driver's seat with manual height adjustment
- Driver and front passenger seatback map pockets

Zetec

Additional to Edge:

- 15" multispoke alloy wheels
- Body colour door mirror housings with power-operated and heated mirrors
- Front fog lights
- Quickclear heated windscreen
- Privacy glass
- Leather-trimmed steering wheel
- Pearl White flexible accessory holder
- Silver insert on gear knob
- Premium trip computer
- Theatre-style courtesy light dimming
- Front and rear premium velour mats
- Headliner stowage net

Titanium

Additional to Zetec:

- 16" 5 Y-spoke alloy wheels
- Advanced Music Pack (stereo radio/CD player with MP3, AUX jack, subwoofer, amplifier and six premium speakers)
- Eleactronic Automatic Temperature Control (EATC)
- Chrome finish door handles and tailgate handle
- Chromefinish exhaust pipe
- White painted gearknob with leather and chrome inserts

Metal Ka

Additional to Zetec:

- 16" 5 Y-spoke alloy wheels
- Metal exterior and interior styling
- Chrome finish door handles, tailgate handle and exhaust pipe

Grand Prix III

Additional to Zetec:

- 16" 5 Y-spoke Black alloy wheels
- Rear spoiler
- Grand Prix exterior and interior styling
- Chrome finish exhaust pipe

Engines

- Petrol
- 1.2 Duratec (with Ford Auto-Start-Stop system)

Engines

- Petrol
- 1.2 Duratec (with Ford Auto-Start-Stop system)

Engines

- Petrol
- 1.2 Duratec (with Ford Auto-Start-Stop system)

Engines

- Petrol
- 1.2 Duratec (with Ford Auto-Start-Stop system)

Engines

- Petrol
- 1.2 Duratec (with Ford Auto-Start-Stop system)

Engines

- Petrol
- 1.2 Duratec (with Ford Auto-Start-Stop system)

\*Note: A child seat should never be placed in the front passenger seat when the Ford vehicle is equipped with an operational front passenger's airbag. The safest place for children is properly restrained on the rear seat.



**16" 5 Y-spoke alloy wheel**  
Shown with Momax wheel inserts\*  
(accessory)

**Eibach® suspension-lowering kit \***  
Enhances driving performance and handling as well as giving a more sporty appearance. Lowers the car by approximately 25 mm. (Accessory)



Make a bold statement with your choice of stunning alloy wheels. You can also have fun combining them with the many options available for the Ford Ka.

**Alloy wheels:**  
Mix and match

**Note** The 16" wheels available on Ford Ka are designed to deliver more sporting driving characteristics and a firmer ride quality compared to standard 14" and 15" wheels.  
\*Shown with wheel inserts (accessory).  
+Please see back cover for warranty information.

**Momax coloured wheel inserts\***  
Add a stylish, personalised finish to the wheels of your vehicle. Easy to install on 16" Y-spoke alloy wheels and available in three colours. (Accessory).



**14" steel wheel with 6-spoke wheel cover**  
(Standard on Studio and Edge)



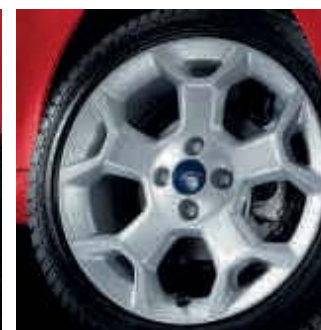
**14" 4x2-spoke alloy wheel**  
(Standard on Studio Connect, Option on Edge, or as an accessory on all other models)



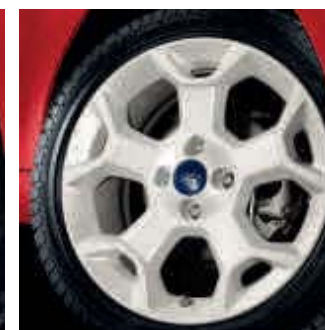
**15" multispoke alloy wheel**  
(Standard on Zetec, or as an accessory on all other models)



**15" 7x2-spoke Silver alloy wheel**  
Available as an accessory on all models.



**16" 5 Y-spoke alloy wheel**  
(Standard on Titanium and Metal Ka. Option on Zetec. Available as an accessory on all other models)



**16" 5 Y-spoke alloy wheel in Piste\***  
(Available as an accessory)



**16" 5 Y-spoke alloy wheel in metallic black**  
(Standard on Grand Prix III, Option on Metal, available as an accessory on all other models)



**Advanced Music Pack**  
Includes premium speakers, amp and subwoofer. Your very own gig on wheels. (Standard on Titanium)

**Audio**  
Stereo radio-CD player with MP3 capability, 4 speakers and an AUX jack. (Standard)



Ford Ka is designed to keep you connected and tuned in when you're out and about

**Audio and connectivity:**  
Stay in touch

**Pioneer premium loudspeakers**

Pioneer's latest speakers offer unrivalled sound quality, good looks and value for money. (Accessory)



**Built in USB Port**

Built-in USB port. Lets you listen to and operate your MP3 and MP4 player via the car's audio system. (Part of Connectivity Pack Option)



**Bluetooth® Voice Control System**

Lets you control your Bluetooth® compatible mobile phone\* and audio system with the sound of your voice. (Part of Connectivity Pack Option).



**Bluetooth® connection**

Bluetooth® wireless technology enables wireless connection between your mobile phone and the hands-free kit installed in your car. (Part of Connectivity Pack option)



**SMS reader**

SMS messages can be read via your car's audio system when received on a mobile phone that is Bluetooth®-enabled\*. The SMS reader informs you of a new message on your mobile phone and the sender. You can also re-read previously saved messages, make a voice call to the sender or delete messages. (Available as part of Connectivity Pack Option)



**Portable navigation**

Leave your maps behind with a simple and intuitive portable GPS navigation system. Please contact your Ford Dealer for details (accessory).



**Note** The Bluetooth® word mark and logos are owned by the Bluetooth SIG, Inc. and any use of such marks by Ford Motor Company Limited and its associated companies is under licence. Other trademarks and trade names are those of their respective owners.

\*To check Bluetooth®-enabled phone compatibility, please contact your Ford Dealer or visit [www.ford.co.uk](http://www.ford.co.uk)



**Make an impression**

Model shown is a Ka Titanium in Crystal (option) with 16" 5 Y-spoke alloy wheels, body colour rear spoiler (option), red mirror caps, wheel inserts, grille surround and side strip (available in black, red and white, all available as accessories).

**Body colour rear spoiler**

Available as an option or accessory. Shown in Strobe metallic body colour (option).



We're all different. So why not show it? Express yourself with our exterior styling accessories and boost your Ford Ka's versatility with our range of carrier systems.

## Exterior style: Express yourself

**Britax Römer® child seat\*\***

Various seats available for all ages, also with ISOFIX.

**\*Note:** A child seat should never be placed in the front passenger seat when the Ford vehicle is equipped with an operational front passenger's airbag. The safest place for children is properly restrained on the rear seat.

+Please see back cover for warranty information.

**Sunblind for panorama roof**

Foldable sunblind shields occupants from direct sunlight and reduces solar radiation. Attaches to the vehicle panorama roof from the inside and can be easily removed when not in use. (Accessory)

**Front and rear mudflaps**  
(Accessory)**ClimAir® wind deflector\***

Reduces wind turbulence and noise, allowing you a more enjoyable drive with the windows down, even during light rain. (Accessory, front and rear available)

WWW





**Leather Pack**

Consists of leather trimmed seats (choice of either Florida or Syracuse), leather door inserts, heated seats and leather handbrake handle (option on Titanium).

**Aluminium pedal set**

(Accessory)



The range of custom-designed options and accessories for new Ford Ka's interior is the perfect opportunity to indulge your love of style.

**Interior style:**  
Express yourself

**Heated front seats**

Perfect for your bottom on cold mornings. (Included with optional leather pack)

**Anti-slip mat**

Luggage compartment protection, moulded to fit perfectly into the Ford Ka. Incorporates anti-slip surface. (Accessory)

**Scuff plates with 'Ka' graphics**

(Accessory)

**Leather seat trim**

Shown in Syracuse (left) and Florida (right). Also includes leather door inserts and heated front seats. (Option – available on Titanium models only)

Image opposite: Model shown is a Ka Titanium with optional Leather Pack, Bluetooth®, USB and ESP.

**Premium velour floor mats**

Premium velour floor mats in Syracuse. (Standard on Zetec and Titanium and available as an accessory)

**Flexible accessory holder**

Fits around the centre console – with a net on either side. (Standard on Zetec and Titanium, and available as an accessory)





Exterior equipment

	Studio	Studio Connect	Edge	Zetec	Titanium	Grand Prix III	Metal Ka
Design features							
Door mirrors – Black housing, manually adjusted	●	●	–	–	–	–	–
Door Mirrors – Body colour housing, manually adjusted	–	–	●				
Door mirrors – Body colour housing, heated and power-operated	–	–	–	●	●	–	●
Door Mirrors – Black-painted housing, heated and power-operated	–	–	–	–	–	●	–
Bumpers – Body colour front	●	●	●	●	●	●	●
Bumpers – Body colour rear	●	●	●	●	●	●	●
Grille Surround – Painted in Midnight Black	–	–	–	–	–	●	●
Door handles – Self colour	●	●	–	–	–	–	–
Door handles – Body colour	–	–	●	●	–	●	–
Door handles – Chrome finish	–	–	–	–	●	–	●
Exhaust finisher – Chrome finish	–	–	–	–	●	●	●
Paint – Solid	●	●	●	●	●	●	●
Paint – Metallic	○	○	○	○	○	○	○
Paint – Special	–	–	–	○	○	–	○
Front fog lights	–	–	–	●	●	●	●
Tinted glass	●	●	●	–	–	–	–
Privacy glass (rear window only)	–	–	–	●	●	●	●
Panorama Roof (Includes Curtain and side airbags)	–	–	–	○	○	○	○
Rear spoiler – Body colour	–	–	–	○	○	●	○
Tailgate handle – Self colour	●	●	–	–	–	–	–
Tailgate handle – Body colour	–	–	●	●	–	●	–
Tailgate handle – Chrome	–	–	–	–	●	–	●
Wheels							
Steel – 14"x5½", 6-spoke wheel cover, 175/65 tyres	●	–	●	–	–	–	–
Alloy – 14"x5½", 5x2-spoke, 175/65 tyres	–	●	○	–	–	–	–
Alloy – 15"x6", 13-spoke, 195/50 tyres	–	–	–	●	–	–	–
Alloy – 16"x6½", 5x2-spoke 'Silver' 195/45 tyres	–	–	–	○	●	–	●
Alloy – 16"x6½", 5x2-spoke 'Black', 195/45 tyres	–	–	–	–	–	●	○
Locking wheel bolts (with alloy wheels)	–	●	○	●	●	●	●
Tyre Mobility Kit	●	●	●	●	●	●	●
Mini Spare Wheel	○	○	○	○	○	○	○

Equipment

Exterior equipment

	Studio	Studio Connect	Edge	Zetec	Titanium	Grand Prix III	Metal Ka
Convenience features							
Parking Distance Sensor – Rear	○	○	○	○	○	○	○
Wipers – Front aero blades, with speed dependent variable intermittent and anti-drip function	●	●	●	●	●	●	●
Wipers – Rear, wash/wipe includes reverse gear wipe	●	●	●	●	●	●	●
Windscreen – Heated, with heated washer jets	–	–	–	●	●	●	●
Front towing hook	●	●	●	●	●	●	●
Lights							
Centre high-mounted stop light	●	●	●	●	●	●	●
Headlight – Single chamber halogen headlight	●	●	●	●	●	●	●
Headlight – Courtesy delay feature	●	●	●	●	●	●	●
Headlight – Manual headlight control	●	●	●	●	●	●	●
Headlight – Levelling	●	●	●	●	●	●	●

● = Standard, ○ = Option at extra cost, □ = Part of an option pack, at extra cost.



Interior equipment

	Studio	Studio Connect	Edge	Zetec	Titanium	Grand Prix III	Metal Ka
Design features							
Floor mats – Front and rear, velour	–	–	–	●	●	●	●
Floor carpet	●	●	●	●	●	●	●
Centre stack bezel – China White	●	●	●	–	–	–	–
Centre stack bezel – Pearl White	–	–	–	●	●	–	–
Centre stack bezel – Piano black	–	–	–	–	–	●	●
Gearshift knob – Studio, Studio Connect, Edge	●	●	●	–	–	–	–
Gearshift knob – Zetec	–	–	–	●	–	–	–
Gearshift knob – Pearl White	–	–	–	–	●	–	–
Gearshift knob (unique design on Grand Prix III, Metal Ka and Titanium as part of Leather Pack)	–	–	–	–	□	●	●
Leather handbrake cover (unique design on Grand Prix III, Metal Ka and Titanium as part of Leather Pack)	–	–	–	–	□	●	●
Steering wheel – 3-spoke	●	●	●	–	–	–	–
Steering wheel – Leather (Grand Prix III, Metal Ka includes silver stitching and piano black bezel)	–	–	–	●	●	●	●
Steering column – Rake adjustable	●	●	●	●	●	●	●
Individual 'Grand Prix III' – Black fabric seats with red vinyl inserts, Red/Black vinyl head restraints, Black fabric door inserts, Piano Black painted centre stack bezel, Piano Black-painted gearshift bezel, Piano Black door pulls, Piano Black-painted instrument cluster housing, Satin aluminium air vent rings, and Syracuse leather steering wheel with Silver stitching and bezel in Piano Black, Silver painted gearshift knob with Syracuse leather and shiny chrome finish inserts, Syracuse vinyl gearshift gaiter with Red stitching, Black leather handbrake handle with Red stitching and chrome finish rings, Black Syracuse Vinyl handbrake gaiter with red stitching, Black velour floor mats with carbon fibre-look piping and Red double stitching	–	–	–	–	–	●	–
Individual 'Metal Ka' – Black/Raptor fabric seats with black inserts with chrome finish rings, head restraints in black fabric, black fabric door inserts, Piano Black painted centre stack bezel, Piano Black gearshift bezel, Piano Black door pulls, Piano Black painted instrument cluster housing, chrome finish air vent rings, Syracuse leather steering wheel with Silver stitching and bezel in Piano Black, Piano Black painted gearshift knob with Syracuse leather and chrome finish inserts, Syracuse vinyl gearshift gaiter with Black stitching, Syracuse leather handbrake handle with black stitching and chrome finish rings, Syracuse vinyl handbrake gaiter with black stitching, Piano Black painted instrument panel stowage net, black velour floor mats with aluminium Ka logo, chrome finish door release lever	–	–	–	–	–	–	●
Audio and communication systems							
CD radio with MP3 and AUX-in connector, four radio speakers	●	●	●	●	–	●	●
Advanced Music Pack – CD radio with MP3 with AUX-in connector, subwoofer and amplifier, six high series radio speakers	–	–	–	–	●	–	–
Connectivity Pack – Bluetooth® Hands Free Phone and Voice Control System with USB connectivity port, remote audio controls and high series cluster	○	●	○	○	○	○	○

Interior equipment

	Studio	Studio Connect	Edge	Zetec	Titanium	Grand Prix III	Metal Ka
Climate control							
Air conditioning – Manual control, includes pollen filter	–	–	●	●	–	●	●
Air conditioning – Electronic Automatic Temperature Control (EATC), includes pollen filter	–	–	–	–	●	–	–
Comfort and convenience							
Accessory power socket (12V)	●	●	●	●	●	●	●
Floor mounted centre console – With single cup holder	●	●	●	●	●	●	●
Flexible accessory holder – Pearl White	–	–	–	●	●	–	–
Flexible accessory holder – Ebony Black	–	–	–	–	–	●	●
Headliner Stowage Net	–	–	–	●	●	●	●
Front dome light	●	●	●	●	●	●	●
Theatre-style dimming	–	–	–	●	●	●	●
Loadspace compartment light	–	–	●	●	●	●	●
Driver sunvisor with flip-up vanity mirror and stowage loop	●	●	●	●	●	●	●
Passenger sunvisor	●	●	●	–	–	–	–
Passenger sunvisor with vanity mirror	–	–	–	●	●	●	●
Windows – Front manual	●	●	–	–	–	–	–
Windows – Front electrically-operated with driver's one shot up/down and passenger's one shot down	–	–	●	●	●	●	●
Low series analogue cluster	●	–	●	–	–	–	–
High series analogue cluster (includes trip computer)	□	●	□	●	●	●	●
Seats							
Front seat – Driver's seat manual 2-way adjust (fore/aft)	●	●	–	–	–	–	–
Front seat – Driver's seat manual 4-way adjust (fore/aft, up/down)	–	–	●	●	●	●	●
Front seat – Driver's tipping seat	●	●	●	●	●	●	●
Front seat – Driver's seat BeltMinder™	●	●	●	●	●	●	●
Front seat map pockets – Driver and passenger	–	–	●	●	●	●	●
Passenger seat – Manual 2-way adjust	●	●	●	●	●	●	●
Passenger seat – Tipping seat with easy entry	●	●	●	●	●	●	●
Heated front seats (standard with leather seats)	–	–	–	–	□	–	–
Rear seat – One-piece foldable bench seat	●	●	●	–	–	–	–
Rear seat – 50:50 split rear seat	–	–	–	●	●	●	●
Rear seat – Head restraints	●	●	●	●	●	●	●
Rear seat – ISOFIX mounts	●	●	●	●	●	●	●
Leather Pack – Choice of either Florida or Syracuse Leather trim, heated front seats, Pearl White gearshift knob, and unique handbrake cover	–	–	–	–	○	–	–
Loadspace							
Removable package tray	●	●	●	●	●	●	●
Loadspace floor carpet	●	●	●	●	●	●	●

● = Standard, ○ = Optional, at extra cost, □ = Part of an option pack, at extra cost. The Bluetooth® word mark and logos are owned by the Bluetooth SIG, Inc. and any use of such marks by Ford Motor Company is under licence. Other trademarks and trade names are those of their respective owners.



Safety and security

	Studio	Studio Connect	Edge	Zetec	Titanium	Grand Prix III	Metal Ka
Safety							
Anti-lock braking system (ABS) with electronic brake-force distribution (EBD)	●	●	●	●	●	●	●
Emergency Brake Assist (EBA)	●	●	●	●	●	●	●
Electronic Stability Programme (ESP), includes Hydraulic Brake Assist (HBA) and Hill Start Assist	○	○	○	○	○	○	○
Emergency Brake Warning – Automatic activation of hazard warning lights under heavy braking	●	●	●	●	●	●	●
Airbags – Driver’s and front passenger’s single stage*	●	●	●	●	●	●	●
Airbags – Side airbags (Pelvis and Thorax)	○	○	○	○	○	○	○
Airbag – Front passenger’s airbag de-activation switch (requires Dealer activation)*	●	●	●	●	●	●	●
Front seat belt double pre-tensioners	●	●	●	●	●	●	●
Rear 3-point seat belt in all positions	●	●	●	●	●	●	●
Maximum speed pre-selection function	●	●	●	●	●	●	●
Security							
Manual locking	●	●	–	–	–	–	–
Remote control central single locking with key fob (retractable) and tailgate button	–	–	●	●	●	●	●
Engine immobiliser – Passive Anti-Theft System (PATS)	●	●	●	●	●	●	●
● = Standard, ○ = Optional, at extra cost, □ = Part of an option pack, at extra cost *Note: A child seat should never be placed in the front passenger seat, when the Ford vehicle is equipped with an operational front passenger’s airbag. The safest place for children is properly restrained on the rear seat.							

Mechanical features

	Studio	Studio Connect	Edge	Zetec	Titanium	Grand Prix III	Metal Ka
Steering							
Electric power-assisted steering (EPAS)	●	●	●	●	●	●	●
Suspension							
Front – Independent with MacPherson struts, and subframe-mounted ‘L’ arm	●	●	●	●	●	●	●
Rear – Twist-beam with coil springs plus additionalanti-roll bar	●	●	●	●	●	●	●
Technology							
Ford Auto-Start-Stop	●	●	●	●	●	●	●
Shift Indicator	●	●	●	●	●	●	●
● = Standard.							

Fuel, performance and emissions

	Transmission	Max. Power PS (kW)	Torque Nm (Nm with Overboost)	CO <sub>2</sub> Emissions (g/km) <sup>90</sup>	Fuel Consumption L/100 km (mpg) <sup>90</sup>			Performance <sup>9</sup>			Gross Vehicle Mass (kg)
					Urban	Extra Urban	Combined	Max. speed mph	0-62 mph (secs)	31-62 mph* (secs)	

3-door											
1.2 Duratec	M5	69 (51)	102	115	5.8 (48.7)	4.4 (64.2)	4.9 (57.7)	99	13.4	13.3	1350

<sup>\*In 4th gear. <sup>9</sup>Ford test figures. <sup>90</sup>The declared fuel consumptions and CO2 emissions are measured according to the technical requirements and specifications of European Directive 80/1268/EEC or the European Regulation (EC) 715/2007 amended by (EC) 692/2008 as last amended. Fuel consumption and CO<sub>2</sub> emissions are specified for a vehicle type and not for a single car. The applied standard test procedure enables comparisons between different vehicle types and different manufacturers. In addition to the fuel efficiency of a car, driving behaviour as well as other non-technical factors are very important in determining a car's fuel consumption and CO<sub>2</sub> emissions. CO<sub>2</sub> is the main greenhouse gas responsible for global warming. A guide on fuel economy and CO<sub>2</sub> emissions which contain data for all new passenger car models is available at any point of sale free of charge or can be downloaded from <http://carfueldata.dft.gov.uk/>. Note all vehicles are Durashift 5-speed manual unless otherwise stated.</sup>

Dimensions

Overall length (mm)	3620
Overall width with/without mirrors (mm)	1894/1658
Overall width with folded back mirrors (mm)	1702.7
Overall height (unladen) (mm)	1505
Minimum distance between wheel arches (in luggage compartment) (mm)	1018
Turning circle – Kerb to kerb (m)	9.8
Luggage capacity (litres)*	
4-seat mode	224
2-seat mode (laden to roof)	747
Fuel tank capacity (litres)	
Petrol	35

<sup>\*Measured in accordance with ISO 3832. Dimensions may vary dependent on the model and equipment fitted.</sup>

Ford Warranty and Servicing Plans

	All Ka Models
3-year/60,000 mile* Ford Protect Classic Plan Warranty	●
1-year/unlimited mileage* Ford Assistance Roadside Cover (UK and Europe)	●
2-year/2 services or 3 years/3 services* Ford Protect Premium Plan, including scheduled servicing and extended Ford Assistance	○
1-year/unlimited mileage* Paint Warranty	●
8-year/unlimited mileage* Perforation Warranty	●

● = Standard, ○ = Optional, at extra cost.  
<sup>\*From the date of first registration. Subject to terms and conditions.</sup>



Colour and trim

Model	Studio	Studio Connect	Edge	Zetec	
Seat insert pattern and colour	Abstract in Fairland	Abstract in Fairland	Abstract in Fairland	Abstract in Coral	Track in Fairland
Centre stack bezels/Door pull grab handle	China White	China White	China White	China White	Pearl White
Feature colour/Environment colour	Syracuse/ Fairland	Syracuse/ Fairland	Syracuse/ Fairland	Syracuse/ Fairland	Syracuse/ Fairland
Solid body colours					
Crystal	○	○	○	–	○
Flame	●	●	–	●	–
Metallic body colours					
Dive	○	○	○	–	○
Hot Mustard	○	○	○	–	○
Moonlight	○	○	○	–	○
Midnight	○	○	○	○	○
Scuba	○	○	○	–	○
Strobe	○	○	○	–	○
Special metallic colours					
Piste	–	–	–	–	○
Blush	–	–	–	–	○

● = Available, ○ = Option at extra cost, – = Not available.

Titanium					Grand Prix III	Metal Ka
Track in Coral	Track in Fairland	Track in Coral	Leather in Syracuse Pearl	Leather in Florida Pearl	Black and Red Vinyl	Lily in Black with Embossed rings
Pearl White	Pearl White	Pearl White	Pearl White	Pearl White	Black	Black
Syracuse/ Fairland	Syracuse/ Fairland	Syracuse/ Fairland	Syracuse/ Fairland	Dark Florida/ Florida	Syracuse/Fairland	Metal
–	○	–	○	–	–	○
●	–	●	○	○	●	●
–	○	–	○	○	–	–
–	○	–	○	–	–	–
○	○	○	○	–	–	○
○	○	○	○	–	○	○
–	○	–	○	○	–	–
–	○	–	○	–	–	○
○	○	○	○	–	–	○
–	○	–	○	○	–	–



Fabric in Fairland/Syracuse  
(Studio, Studio Connect and  
Edge)



Fabric in Coral/Syracuse  
(Edge)



Fabric in Fairland/Syracuse  
(Zetec and Titanium)



Fabric in Coral/Syracuse  
(Zetec and Titanium)



Leather in Syracuse\*  
(Titanium)



Leather in Florida\*  
(Titanium)



Black fabric with Red vinyl  
inserts  
(Grand Prix III)



Black/Raptor fabric with  
chrome-look rings/Syracuse  
(Metal)



Crystal  
Solid body colour\*



Hot Mustard  
Metallic body colour\*



Flame  
Solid body colour



Moonlight  
Metallic body colour\*



Scuba  
Metallic body colour\*



Midnight  
Metallic body colour\*



Piste  
Special metallic body colour\*



Strobe  
Metallic body colour\*



Dive  
Metallic body colour\*



Blush  
Special metallic body colour\*

\*Optional at extra cost.

The Ford Ka is covered by the Ford Perforation Warranty for 8 years from the date of first registration. Subject to terms and conditions.

**Note** The car images used are to illustrate body colours only and may not reflect current specification. Colours and trims reproduced within this brochure may vary from the actual colours, due to the limitations of the printing processes used.



# Your new Ford Ka

We have developed a simple three-step plan to help you choose, finance and drive your new Ford Ka.

## Choose

Use the form opposite to specify your new car right down to the wheels, audio, options and accessories, then take it to your Ford Dealer.

You can also specify your new car online using the Ford Configurator. It lets you instantly see what your car will look like – inside and out – from multiple angles. And a tally of your choices and their prices helps you keep to your budget.

Visit

[www.ford.co.uk/SBE/ConfigureYourVehicle](http://www.ford.co.uk/SBE/ConfigureYourVehicle)

## Finance

When it comes to financing your car, our size and expertise means we're well placed to provide you with a wide range of finance products.

Ford Credit\*\* provides straightforward finance products for your car whether you are a private or business user.

Ford Lease\* provides simple tailored funding solutions for your business. Business users only

For more information about our finance products visit [ford.co.uk](http://ford.co.uk)

## Drive

When you drive away in your new car, we're with you all the way. Ford has the largest authorised service network in the UK to help you keep your car in the best condition.

And should your new Ford ever require accident repair, a Ford Accident Repair Centre is the best place to get your car back to its pre-accident condition and on the road as quickly as possible.

## Contact

Ford Credit Customer Services 0845 712 5490

Ford Lease Customer Services 0844 600 1405

Bodystyle:	Series:
Engine:	
Transmission:	
Colour:	
Trim:	
Wheels:	
Audio:	
Options:	
Option Packs:	
Accessories:	
Finance:	

\*\* Finance subject to status. Guarantee/indemnities may be required. Freeport Ford Credit.

\*Ford Lease is provided by ALD Automotive Ltd, trading as Ford Lease, Oakwood Park, Lodge Causeway, Fishponds, Bristol, BS16 3JA. ALD Automotive is registered in England No. 987418. For the purposes of the Data Protection Act 1998 the data controllers in relation to any information you supply are Ford Motor Company Limited, FCE Bank plc and ALD Automotive. Finance subject to status. Guarantees and indemnities may be required. ALD Automotive is authorised and regulated by the Financial Conduct Authority in respect of general insurance products.

To configure your Ford online visit  
[www.ford.co.uk/SBE/ConfigureYourVehicle](http://www.ford.co.uk/SBE/ConfigureYourVehicle)  
 To look at finance for your Ford visit  
[www.fordcredit.co.uk/BuyingAndProtectingYourFord](http://www.fordcredit.co.uk/BuyingAndProtectingYourFord)  
 Business users visit [www.ford.co.uk/FordForBusiness](http://www.ford.co.uk/FordForBusiness)







**Illustrations, descriptions and specifications.** This catalogue was correct at the time of going to print. However, Ford policy is one of continuous product development. The right is reserved to change specifications, colours and prices of the models and items illustrated and described in this publication at any time. For the latest details always consult your Ford Dealer. **Optional equipment.** Throughout this publication, wherever a feature is described as being an 'Option' or 'Option Fitment/Pack' etc, you should assume that it will be at extra cost to the base vehicle, unless specifically stated to the contrary. All models and colour combinations are subject to availability. **Note.** Some images portrayed are of a pre-production model and/or are computer generated, therefore, the design/features on the final version of the vehicle may differ in various respects. In addition, some of the features shown on the vehicles may be optional. **Note.** This brochure contains both original Ford accessories as well as a range of products from our suppliers. ♦ The identified accessories are carefully selected third party supplier branded accessories which do not come with a Ford warranty but are instead covered by the third party supplier's own warranty, the details of which can be obtained from your Ford Dealer. **Note.** The Bluetooth® word mark and logos are owned by the Bluetooth SIG, Inc. and any use of such marks by Ford Motor Company is under licence. The iPod word mark and logos are the property of Apple Inc. Other trademarks and trade names are those of their respective owners. **Note.** Some driver assistance features and safety features described in this brochure are designed to function using sensors, whose performance may be affected under certain weather or environmental conditions.

**The Government fuel figures** do not express or imply any guarantee of the fuel consumption of any particular vehicle. The vehicles themselves have not been tested and there are inevitably differences between individual vehicles of the same model. In addition, a vehicle may incorporate particular modifications. Furthermore, the driver's style and road and traffic conditions, as well as the extent to which the vehicle has been driven and the standard of maintenance, will affect its fuel consumption. **Insurance groups** are only as recommended by the Association of British Insurers. You should always consult your insurance adviser for confirmation.



BY APPOINTMENT TO  
HER MAJESTY THE QUEEN  
MOTOR VEHICLE MANUFACTURERS  
FORD MOTOR COMPANY LIMITED  
BRENTWOOD ESSEX



BY APPOINTMENT TO  
HIS MAJESTY THE PRINCE OF WALES  
MOTOR VEHICLE MANUFACTURERS  
FORD MOTOR COMPANY LIMITED  
BRENTWOOD ESSEX



Ford and BP – working together to reduce fuel consumption and emissions.



Collect Nectar points at participating Ford Dealers and Authorised Repairers now. So take a look at the latest Ford Service Promotions by visiting the Owner Services section within [www.ford.co.uk](http://www.ford.co.uk).



#### Ford One Call

In the unlikely event that your Ford Dealer can't help you or if you need to speak to us directly, call 0203 564 4444

#### Ford Rental - local service nationwide

Car and Van rental from our latest model range. Contact your local Ford Dealer for more information

#### Ford Motability

Our dedicated care centre provides free information on all motoring and mobility issues, including special offers for HRDLA and Motability recipients. Call free on 0845 6040019

#### Finance

Ford Credit Customer Services 0845 712 5490  
Ford Lease Customer Services 0844 600 1405

Published by Ford Motor Company Limited, Brentwood, Essex, England.  
Registered in England No. 235446.

FA 1537/9

BJN 202884. FoE H43E.

PN 373501/1113/30m/GBR en

November 2013

© Ford Motor Company Limited.

[www.ford.co.uk](http://www.ford.co.uk)