

FORD TRANSIT COURIER



Go Further



Visionary. Ingenious. Remarkable.
Every vehicle bears his signature.

Henry Ford



Give your business the efficiency it deserves.

Introducing the sensational all-new Ford Transit Courier. Efficient, nippy and easy to drive, it combines outstanding CO₂ emissions and fuel economy with low running costs. Offering a choice between the award-winning EcoBoost petrol engine and the refined Duratorq TDCi diesels, Transit Courier is an attractive proposition for your business.

And it's not just on the operating costs where Transit Courier excels. Its compact dimensions let you negotiate city streets with ease, but gives you an exceptional loadspace of up to 2.4 cu.m* and a 660 kg maximum payload gives you the confidence to handle larger jobs too.

1.6 Duratorq TDCi 95 PS diesel engine

97 g/km** CO₂

76.3 mpg**



*Measured in cubic metres in accordance with ISO 3832 and VDA methodology with folding mesh bulkhead. **Ford test figures (combined cycle) with Auto-Start-Stop system and 62 mph Speed Limiter. See page 25 for fuel economy figures





Everything you need to make your job easier.

Transit Courier is hugely accommodating – and not just for your cargo. In the cab you'll find comfortable seats, a fully-adjustable steering column and electrically-operated front windows². Plus a host of thoughtful features to help make your working day easier.

Features include

- Device Dock¹, designed to store, mount and charge mobile devices, including smartphones and satnavs⁴
- DAB Radio¹ allows you to stream your music through the car's speakers via Bluetooth® or using a USB cable
- Deep centre console, capable of storing A4 documents and small laptops
- Overhead stowage shelf²
- Reverse gear-activated rear-view camera³
- Stowage drawer under the driver's seat²

¹Standard on Base series.

²Standard on Trend series.

³Option on Trend series.

⁴Device dimension limits apply

Note The Bluetooth® trademark and logos are owned by the Bluetooth SIG, Inc. and any use of such marks by Ford Motor Company Limited and its associated companies is under licence. Other trademarks and trade names are those of their respective owners.

Loaded with smart ideas.

Transit Courier's 1620 mm load floor length offers plenty of room for cargo, toolboxes or equipment, while a folding mesh bulkhead with fold-and-dive passenger seat (option) lets you carry pipes, tubes or similar items up to 2.6 metres** in length. Sidewall-mounted tie-downs (standard) keep the load floor free from obstructions, and an LED load compartment light (option on Van, not available on Kombi) helps loading and unloading after dark.



Transit Courier Kombi

Transit Courier Kombi's spacious interior means plenty of room for up to five occupants, as well as bags and equipment. When the split-fold rear seats are folded and tumbled forward, you have a huge 1.7 cu.m* of hardworking space at your disposal.

**Extended length available for Vans, not Kombi.

*Measured in cubic metres in accordance with ISO 3832 and VDA methodology.

Generous space, easy access.

With up to 2.4 cu.m* of transport capacity and a payload of between 560 and 660 kg, Transit Courier makes light work of almost any job. With the standard bulkhead fitted in the vehicle, the sliding side door opens to reveal an outstanding 453 mm aperture, allowing loads to be put in with ease.



Clever thinking.

To make the most of its generous space, twin asymmetric rear cargo doors with an opening angle of up to 158 degrees are standard and allow unrestricted access to the load compartment. Side-mounted tie-downs help to keep the floor clear and make it easy to clean after the work is done.



Transit Courier Kombi. More than just a people carrier.

Need to carry people as well as cargo? Then look no further than the versatile Transit Courier Kombi. With comfortable seating for up to five, it's easy to transport a crew and their tools or equipment. Once on site, fold the rear seats flat and you have a spacious and capable van, ready for even the toughest day's work.





A van that's built to last.

Designed and tested to Ford's stringent vehicle testing and durability standards, Transit Courier delivers reliable van toughness in a compact package.

Features include

- Rigorous Ford testing programme, designed to simulate years of extreme use
- Tough, high-strength steel bodyshell
- Safety features including driver's airbag, passenger's airbag (option), Electronic Stability Control (ESC), Hill Start Assist, Traction Control System, Roll-Over Mitigation, Electronic Brake Assist, Emergency Brake Warning and Trailer Sway Control
- Extended 20,000 miles/1-year service intervals for lower maintenance costs
- Multi-piece rear bumper assembly helps to keep repair costs low
- 12-year perforation warranty

Note Front seat side airbags are available as options. Kombi models come with standard side, front, curtain and thorax airbags. A knee protector airbag is also available as an option on Kombi models and is part of the lower fascia panel.

Transit Courier series.



Base

Key exterior features

- 15" steel wheels with centre caps
- Day running lights
- Ford Easy-Fuel capless refuelling system
- Remote controlled central locking
- Asymmetric rear doors
- Full sized spare wheel
- Immobiliser
- Electronic Stability Control (ESC)

Key interior features

- Rake and Reach adjustable steering column
- 4-way adjustable driver's seat
- Device Dock
- DAB Radio with Bluetooth and USB connectivity
- Fixed moulded bulkhead
- Deep centre console with two cup holders and A4 document stowage
- Driver's airbag
- Manual front windows
- Lidded glove box
- Load compartment lighting

Note: A rear-facing child seat should never be placed in the front passenger seat when the Ford vehicle is equipped with an operational front passenger's airbag.

Trend

Exterior features in addition to Base

- 15" steel wheels with full wheel covers
- Front fog lights
- Body colour door mirror housings and door handles
- Single side load door
- Rain-sensing front wipers
- Automatic headlights
- Electrically-operated and heated door mirrors

Interior features in addition to Base

- Driver's side underseat stowage drawer
- Driver's 8-way seat with adjustable lumbar support and armrest
- Overhead stowage shelf
- CD/Radio with Ford SYNC and 3.5" dot-matrix display
- Electrically-operated front windows
- Leather-trimmed steering wheel and gearshift knob
- Fuel computer
- Bright-finish door release handles
- Glovebox illumination
- Courtesy lights with front map-reading lights
- 12v auxiliary socket in load box



Deep centre console.

Inside, Transit Courier boasts plenty of handy stowage, including the Deep centre console, which can hold A4-sized documents and smaller laptops.



Cruise control with Adjustable Speed Limiter.

Cruise control lets you set the pace, while the Adjustable Speed Limiter allows you to set a maximum speed to avoid inadvertently exceeding the speed limit (Option)



Ford SYNC with Applink.

Welcome to the next generation of in-car connectivity. Voice-activated Ford SYNC with Emergency Assistance* offers connectivity so advanced it lets you control entertainment, navigation and more. And can even read your text messages aloud**. (Standard on Trend)



*No subscription required.
**Text messaging feature available in selected countries. See your local Ford website for latest information.



Ford Easy-Fuel capless refuelling system.

A unique safeguard to ensure nobody can accidentally fill up with the wrong fuel. Plus, no dirty fuel caps to touch. (Standard)

Device Dock.

Located just above the instrument panel, Device Dock is designed to hold your smartphone, MP3 player or navigation device within easy reach. Stream your music through the car's speakers via Bluetooth® or using a USB cable connected to the DAB Radio. The lidded compartment provides covered storage for your device and contains a charge-only USB socket. (Standard on Base)

Note The Bluetooth® trademark and logos are owned by the Bluetooth SIG, Inc. and any use of such marks by Ford Motor Company Limited and its associated companies is under licence. Other trademarks and trade names are those of their respective owners.



Underseat stowage drawer.

A handy under passenger seat stowage drawer option on Base series,Trend series standard, is large enough to hold an A4 clipboard, tablet or a laptop computer.



Safe and secure

Across the Ford Transit Courier range, a full line-up of passive and active safety features makes use of the latest technology to protect you, your passengers and your cargo.

- 1. Driver's (standard) and front passenger's airbags* (standard on Kombi)
- 2. Driver's and front passenger's side impact airbags* (option on Van, standard on Kombi)
- 3. Side curtain airbags (option on Van, standard on Kombi)
- 4. Knee protector airbag (option on Kombi)
- 5. Rear seat belt minders (standard on Kombi)
- 6. Speed Limiter (option)
- 7. Electronic Stability Control and associated features (standard on all models)
- 8. Remote central locking (standard on all models)
- 9. Engine immobiliser (standard on all models)
- 10. Perimeter or Thatcham Cat 1 alarms (options)

*Note: A rear-facing child seat should never be placed in the front passenger seat when the Ford vehicle is equipped with an operational front passenger's airbag. The safest place for children is properly restrained on a rear seat.

Electronic Stability Control (ESC)

Hill Start Assist

Designed to temporarily prevent you from rolling down a slope when you move your foot from the brake pedal to the accelerator pedal. It works in forward and reverse gears, so is ideal for towing and pulling heavy loads. (Standard)

Emergency Brake Assist

Designed to recognise an emergency braking situation and increase the pressure within the braking system to ensure maximum stopping power is used. (Standard)

Emergency Brake Warning

Front and rear indicators automatically flash during heavy braking, giving other drivers advance hazard warning. (Standard)

Traction Control

If wheel slip is detected at low speed, this system can distribute more torque to the wheel with most traction. (Standard)

Roll-Over Mitigation

Designed to identify a potentially dangerous driving situation and activate the ESC to restore stability. (Standard)

Trailer Sway Control†

When the system recognises that a towed trailer is starting to sway, it reduces engine torque and applies the brakes to lower the speed and help regain stability.

†Compatible with a Ford factory-fit tow bar.

Ford SYNC with AppLink*

The next generation of in-car connectivity. **Ford SYNC** with **AppLink*** lets you operate most popular MP3 players, Bluetooth®-enabled phones, USB drives and even control apps on your smartphone with remarkably simple voice commands. Plus the Ford Emergency Assistance feature is designed to assist occupants to place an emergency call in the event of an accident – wherever you are in Europe. (Standard on Trend)

*Compatible mobile phone required. (Ford SYNC with AppLink is available from summer 2014.) You can browse a list of AppLink-compatible apps from [Ford.co.uk](#), or via the App Catalog available in iOS and Android stores. Ford SYNC with AppLink and Emergency Assistance are not supported by all European languages.
Note The Bluetooth® trademark and logos are owned by the Bluetooth SIG, Inc. and any use of such marks by Ford Motor Company Limited and its associated companies is under licence. Other trademarks and trade names are those of their respective owners.



Tyre Pressure Monitoring

Allows you to monitor tyre pressure while on the move. System alerts you if it detects that a tyre's pressure is too low, such as in the case of a puncture. (Standard on Kombi, option on Van)



	Base	Trend	Kombi
Safety and driver assistance			
Anti-lock brakes – Electronic, 4-wheel ¹⁾	●	●	●
Electronic Stability Control (ESC) ¹⁾	●	●	●
Hill Start Assist (HSA) ²⁾	●	●	●
Roll-Over Mitigation (ROM) ¹⁾	●	●	●
Emergency Brake Assistance ¹⁾	●	●	●
Emergency Brake Warning ²⁾	●	●	●
Trailer Sway Control ¹⁾ (with Ford towbar)	●	●	●
Driver front airbag – single stage ¹⁾	●	●	●
Passenger front airbag – single stage ¹⁾ (with passenger deactivation button)*	○	○	●
Driver and passenger side airbag ¹⁾	○	○	●
Driver knee airbag ¹⁾	–	–	○
Beltminder – Driver seat	●	●	●
Beltminder – Passenger seat	□	□	●
Tyre pressure monitoring ¹⁾	○	○	●
Security			
Central double deadlocking	●	●	●
Side-load door child locks	●	●	●
Remote central locking – 1 Lollipop Key & 1 Plain Key	●	–	●
Remote central locking – 1 Flip Key & 1 Lollipop Key	○	●	○
Perimeter alarm	○	○	○
Thatcham category 1 alarm (Not available with rear glazing on Van)	○	○	○
Engine immobiliser	●	●	●

● = Standard, ○ = Option, at extra cost, □ = Part of an option pack, at extra cost. ¹⁾Safety feature ²⁾Driver assistance feature
*Note: A rear-facing child seat should never be placed in the front passenger's seat when the Ford vehicle is equipped with a front passenger or side airbags.

Option packs

	Base	Trend	Kombi
Option packs			
Comfort Pack – Manual air conditioning including cooled bottle stowage, leather-trimmed steering wheel, cruise control, and rear parking distance sensors (pack 6)	–	○	–
Cold Climate – Heated windscreen, front fog lights, PTC heater, self colour power adjust heated exterior mirror, power front window (Pack 11)	○	–	–
Sport Pack – 15" alloy wheels, rear parking sensors, and roof rails (pack 2)	–	○	–

● = Standard, ○ = Option, at extra cost, □ = Part of an option pack, at extra cost.

Exterior features

	Base	Trend	Kombi
Exterior appearance and styling			
Front bumper – Self colour	●	●	●
Rear bumper – Self colour	●	●	●
Bodyside moulding – Self colour	●	●	●
Door handles – Self colour	●	–	●
Door handles – Body colour	–	●	–
Grille – Self colour	●	●	●
Mudflaps – Front and rear	○	○	○
Headlight bezel – Black	●	–	●
Headlight bezel – Bright	–	●	–
Roof rails – Bright Finish	○	○	○
Exterior functional			
Doors – Single side load	○	●	–
Doors – Dual side load	○	○	●
Doors - 2nd row flip out windows	–	–	●
Doors – Rear liftgate (glazed)	○	○	○
Doors – Rear cargo	●	●	●
Rear glazing, heated with wash/wipe	○	○	●
Mirrors – Self colour housing, manually controlled	●	–	●
Mirrors – Self colour housing, electrically operated and heated	○	–	○
Mirrors – Body colour housing, electrically operated and heated	–	●	–
Wipers – Automatic with rain sensor	□	●	□
Wipers – Standard 2 speed, variable intermittent, flick/dry wipe	●	–	●
Windscreen – Heated, includes heated washer jets	○	○	○
Heated rear screen	□	□	●
Parking sensors – Rear	–	○	–
Glass – Tinted	●	●	●
Detachable towbar (13 pin connector; not available at launch)	○	○	○
Roof crossbars (not available at launch)	○	○	○
Rear window protection grille (cargo doors only; not available at launch)	○	○	○
Steel – 15"x6" wheel (fitted with 195/60/ tyres)	●	●	●
Full wheel cover	–	●	–
Alloy – 15"x6" 5-spoke (fitted with 195/60 tyres) with locking wheel nuts	–	○	–
Tyre inflator kit (instead of spare wheel)	○	○	○
Spare – Full size wheel	●	●	●
Exterior lighting			
Headlights – Day running lights	●	●	●
Headlights – Twin chamber halogen headlights	●	●	●
Headlights – Automatic on/off	□	●	□
Headlights – Courtesy delay	●	●	●
Fog lights – Front	□	●	□
Centre mounted stop light	●	●	●
● = Standard, ○ = Option, at extra cost, □ = Part of an option pack, at extra cost.			

Chassis features

	Base	Trend	Kombi
Brakes			
Brakes – Front disc, rear drum	●	●	●
Steering			
Electric Power Assisted Steering (EPAS)	●	●	●
Technology			
Auto Start-Stop	○	○	○
Brake system – Smart regenerative charging	●	●	●
Ford Eco Mode (driver information system; Part of Ford SYNC)	□	●	□
Engine Governors			
Speed Limiter – 56 mph	○	○	○
Speed Limiter – 62 mph	○	○	○
Speed Limiter – 70 mph	○	○	○
● = Standard ○ = Option, □ = Option as part of Pack.			

Interior features

	Base	Trend	Kombi
Audio and communication systems			
Audio – pre-equipment pack	○	–	○
Radio with DAB, USB, Bluetooth® with Voice Control System (2 speakers) ICE pack 15	●	–	●
Radio with SYNC/DAB/CD with 3.5" dot matrix display, USB connectivity and iPod® functionality, Ford SYNC - includes Emergency Assistance**, Bluetooth® with Voice Control System, Ecomode, automatic rain sensor and 4 speakers (4 front). ICE pack 13	○	●	○
Radio with Sat Nav, SYNC/DAB/CD with 5" TFT screen, USB connectivity and iPod® functionality, 4 speakers (front) Ford SYNC- includes Emergency Assistance**, Bluetooth® with Voice Control System, Ecomode, Manual A/C and automatic rain sensor ICE Pack 37	○	○	–
Radio with Sat Nav, SYNC/DAB/CD with 5" TFT screen, USB connectivity and iPod® functionality, 4 speakers (front) Ford SYNC- includes Emergency Assistance**, Bluetooth® with Voice Control System, Ecomode, Rear View Camera, Manual A/C and automatic rain sensor ICE Pack 59	–	○	–
Radio with Sat Nav, SYNC/DAB/CD with 5" TFT screen, USB connectivity and iPod® functionality, 4 speakers (front) Ford SYNC- includes Emergency Assistance**, Bluetooth® with Voice Control System, Ecomode, Rear View Camera, EATC with electronic recirculation facility and automatic rain sensor ICE Pack 66	–	○	–
Device Dock with USB connection.	●	–	●
Carpet and Trim			
Carpet – Front, with driver's side heel protection	–	–	●
Rubber Lining – Front	●	●	–
Rubber Lining – Rear cargo area	○	○	●
Interior lighting			
Glovebox illumination	●	●	●
Lights – Load compartment	●	●	●
Lights – Load compartment with LED	○	○	–
Lights – Battery saver (30 mins duration)	●	●	●
Courtesy lights – Front	●	–	●
Courtesy lights – Front with map reading lights	–	●	–
Instruments and controls			
Steering wheel – 3 spoke PU	●	–	●
Steering wheel – 3 spoke Leather with radio controls	□	●	□
Fuel computer	□	●	□
Adjustable steering column - (rake and reach)	●	●	●
Screen mounted rear-view mirror (not available with solid bulkhead)	● / –	● / –	●
Auto dimming rear view mirror (not available with solid bulkhead)	□ / –	● / –	□
Comfort and convenience			
Door lever – Black	●	–	●
Door lever – Bright finish	–	●	–
Front passenger folding grab handle (optional on Base Van as part of overhead storage)	□	●	●
Gearshift knob – Soft feel with black insert	●	–	●
Gearshift knob - Leather	□	●	□
Locking glovebox	–	●	–
Centre console with 2 cupholders and A4 size stowage	●	●	●
Overhead stowage	○ / □	●	○ / □
Cruise control – switches on steering wheel (3 spoke leather steering wheel included on Base)	○	○	○
Heater – Electrical Supplementary (PTC)	○ / □	○ / □	●
Air conditioning – Manual control	○ / □	○ / □	○
Air conditioning – Electronic Automatic Temperature Control (EATC)	–	□	–
Recirculation heater	●	●	●
Pollen filter	●	●	●
Windows – Manual adjust	●	–	–
Windows – Electrically-operated with one-touch lowering on driver's side	○	●	●
Smoker's Pack (contains ashtray and cigarette lighter)	○	○	○
Loadspace compartment			
No bulkhead	–	–	●
Bulkhead - Moulded Unglazed (where no side load door is fitted)	●	–	–
Bulkhead – Steel Unglazed (where a side load door is fitted on Base series)	●	●	–
Bulkhead – Steel Glazed	○	○	–
Folding Mesh Bulkhead (only available with seat packs including fold-dive passenger seat)	□	□	–
12V power point in loadspace	–	●	–
Cargo tie-downs (6 x DIN 75410 compliant)	●	●	–
Cargo tie-downs (4 x DIN 75410 compliant)	–	–	●
Loadspace liner (not available at launch)	○	○	–
● = Standard, ○ = Option, at extra cost, □ = Part of an option pack, at extra cost. The Bluetooth® trademark and logos are owned by the Bluetooth SIG, Inc. and any use of such marks by Ford Motor Company Limited is under licence. Other trademarks and trade names are those of their respective owners. **Ford Emergency Assistance operates in over 30 European countries. This feature works when paired with a compatible connected mobile phone that is with you when an airbag is deployed or the fuel pump shut off switch is activated. See your local Ford website for latest information.			

Seats

	Base	Trend	Kombi
Seats and seat belts			
Driver's seat – fore/aft adjustable	●	-	●
Driver's seat – fore/aft and height adjustable, with lumbar control and armrest	○	●	○
Driver's seat – Armrest	○	●	-
Passenger seat – fore/aft adjustable	●	●	●
Beltminder – Driver seat	●	●	●
Beltminder – Passenger seat	□	□	●
Fold/dive passenger seat	□	□	-
Underseat stowage (Passenger seat with standard bulkhead, drives seat with mesh bulkhead)	□	●	-
Rear seat – fold and tumble 60/40split (fixed)	-	-	●
Rear seat – Adjustable headrests on outboard seats	-	-	●
● = Standard, ○ = Option, at extra cost, □ = Part of an option pack, at extra cost. The Bluetooth® trademark and logos are owned by the Bluetooth SIG, Inc. and any use of such marks by Ford Motor Company Limited is under licence. Other trademarks and trade names are those of their respective owners. **Ford Emergency Assistance operates in over 30 European countries. This feature works when paired with a compatible connected mobile phone that is with you when an airbag is deployed or the fuel pump shut off switch is activated. See your local Ford website for latest information.			

Model availability

	Base	Trend	Kombi
Ford Transit Courier			
1.0 EcoBoost (100 PS (75 kW))	○	○	-
1.5 Duratorq TDCi (75 PS (56 kW))	○	○	○
1.6 Duratorq TDCi (95 PS (71 kW))	-	○	-
● = Standard, ○ = Option, at extra cost. Note all diesel engines are fitted with a standard vDPF (vaporiser Diesel Particulate Filter).			

Weights and loads

	Gross payload [®]	Gross vehicle mass (kg)	Kerb mass (kg) [•]	Front axle kerb mass (kg)	Rear axle kerb mass (kg)	Axle ratio	Max. GTM (kg) with quoted axle ratio	CO ₂ emissions (g/km) ^{®®}	Fuel consumption in mpg (L/100 km) [®]		
									Urban	Extra Urban	Combined
Transit Courier											
1.0 EcoBoost (100 PS (75 kW))	650	1765	1115	690	425	3.37	2675	124	41.5 (6.8)	60.1 (4.7)	52.3 (5.4)
1.0 EcoBoost (100 PS (75 kW)) with optional Start-Stop	645	1765	1120	695	425	3.37	2675	119	45.6 (6.2)	60.1 (4.7)	54.3 (5.2)
1.5 Duratorq TDCi (75 PS (56 kW))	660	1795	1135	705	430	3.37	2295	108	60.1 (4.7)	76.3 (3.7)	68.9 (4.1)
1.5 Duratorq TDCi (75 PS (56 kW)) with optional Start-Stop	655	1795	1140	710	430	3.37	2295	103	64.2 (4.4)	78.5 (3.6)	72.4 (3.9)
1.6 Duratorq TDCi (95 PS (71 kW))	660	1795	1135	705	430	3.37	2295	105	60.1 (4.7)	78.5 (3.6)	70.6 (4.0)
1.6 Duratorq TDCi (95 PS (71 kW)) with optional Start-Stop	655	1795	1140	710	430	3.37	2295	100	64.2 (4.4)	80.7 (3.5)	74.3 (3.8)
1.6 Duratorq TDCi (95 PS (71 kW)) with optional Start-Stop and 62 mph fixed speed limiter	655	1795	1140	710	430	3.37	2295	97	64.2 (4.4)	83.1 (3.4)	76.3 (3.7)
[®] Payload = Gross vehicle mass, less kerb mass. All kerb masses quoted in this brochure are subject to manufacturing tolerances and are for Base models with minimum equipment. Trend models will have greater kerb masses and, therefore, lower payloads due to the increased amount of standard equipment. Any additional options specified on the vehicle will reduce the payload accordingly. The declared fuel consumption and CO2 emissions for Stage V engines are measured according to the technical requirements and specifications of European Regulation (EC) 715/2007 and latest amendment. Fuel consumption and CO2 emissions are specified for a vehicle type and not for a single vehicle. The applied standard test procedure enables a comparison between different vehicle types; the specification and options selected may have an effect i.e. on vehicle weight and therefore on the emissions and fuel economy of the vehicle and also may influence the figures that appear in the individual vehicle documentation. This information is not part of any product offer made. Real world fuel consumption can vary as the fuel efficiency of a vehicle is influenced by (individual) vehicle configurations, driving behaviour, use of technical equipment such as air conditioning, as well as other non-technical factors. [•] Represents the lightest kerbweight assuming full fluid levels and 90% fuel levels, subject to manufacturing tolerances and options, etc, fitted. Note all engines are fitted with a standard vDPF (vaporiser Diesel Particulate Filter).											

Weights and loads

Weights and loads									Fuel consumption in mpg (L/100 km) [®]		
	Gross payload [®]	Gross vehicle mass (kg)	Kerb mass (kg) [•]	Front axle kerb mass (kg)	Rear axle kerb mass (kg)	Axle ratio	Max GTM (kg) with quoted axle ratio	CO ₂ emissions (g/km) ^{®®}	Urban	Extra Urban	Combined
Transit Courier Kombi											
1.5 Duratorq TDCi (75 PS (56 kW))	565	1795	1230	725	505	3.37	2295	108	60.1 (4.7)	76.3 (3.7)	68.9 (4.1)
1.5 Duratorq TDCi (75 PS (56 kW)) with optional Start-Stop	560	1795	1235	730	505	3.37	2295	103	64.2 (4.4)	78.5 (3.6)	72.4 (3.9)
[®] Payload = Gross vehicle mass, less kerb mass. All kerb masses quoted in this brochure are subject to manufacturing tolerances and are for Base models with minimum equipment. Trend models will have greater kerb masses and, therefore, lower payloads due to the increased amount of standard equipment. Any additional options specified on the vehicle will reduce the payload accordingly. The declared fuel consumption and CO2 emissions for Stage V engines are measured according to the technical requirements and specifications of European Regulation (EC) 715/2007 and latest amendment. Fuel consumption and CO2 emissions are specified for a vehicle type and not for a single vehicle. The applied standard test procedure enables a comparison between different vehicle types; the specification and options selected may have an effect i.e. on vehicle weight and therefore on the emissions and fuel economy of the vehicle and also may influence the figures that appear in the individual vehicle documentation. This information is not part of any product offer made. Real world fuel consumption can vary as the fuel efficiency of a vehicle is influenced by (individual) vehicle configurations, driving behaviour, use of technical equipment such as air conditioning, as well as other non-technical factors. [•] Represents the lightest kerbweight assuming full fluid levels and 90% fuel levels, subject to manufacturing tolerances and options, etc, fitted. Note all engines are fitted with a standard vDPF (vaporiser Diesel Particulate Filter).											

Engine Data

	Engine technical features	Maximum power ^a	Maximum torque ^a
1.0 EcoBoost (100 PS (75 kW))	3 cylinders in line, DOHC, 12 valves, alloy cylinder head, direct injection with high-pressure, common rail multipoint fuel injection system, turbocharger with intercooler	100 PS	170 Nm
1.5 Duratorq TDCi (75 PS (56 kW))	4 cylinders in line, SOHC, 8 valves, aluminum cylinder block with open deck, direct injection via solenoid injectors, common rail 3rd generation fuel injection system, fixed geometry turbocharger, electronic EGR	75 PS	190 Nm
1.6 Duratorq TDCi (95 PS (71 kW))	4 cylinders in line, SOHC, 8 valves, alloy cylinder head, direct injection with high-pressure, common rail multipoint fuel injection system, turbocharger with intercooler, electronic EGR	95 PS	215 Nm
^a Tested in accordance with ISO 1585. Note all diesel engines are fitted with a standard vDPF (vaporiser Diesel Particulate Filter).			

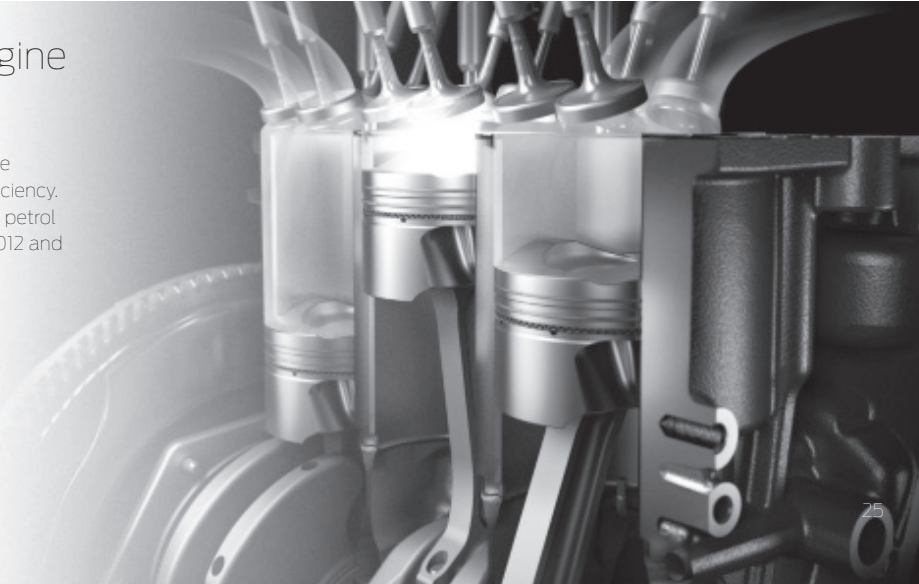


Overhead stowage system

Transit Courier is equipped with plenty of useful in-cab storage areas, including a full-width overhead stowage shelf. (Standard on Trend, option on Base)

Ford EcoBoost. International Engine of the Year 2013

The diamond-like coating on the piston rings reduces friction; the turbocharger, direct injection and variable valve timing boost efficiency. The result is remarkable performance from such an economical petrol engine. Winner of the International Engine of the Year Awards 2012 and 2013, the 1.0-litre EcoBoost develops 100 PS of power.



Making life easy

Our range of finance, service and assistance options is designed with just one thing in mind – making life easy for you.

Commercial Vehicle Finance

At Ford, we can help you find the right vehicle to suit your needs, whether its for business or pleasure. Our wide range of competitive finance products can help you get on the road – quickly and easily.

Ford Credit: Provides a range of traditional finance products for customers who are interested in Commercial Vehicle ownership.

Ford Lease: Specialises in contract hire and leasing and provides an alternative range of finance products aimed at business customers (business users only).

Both are part of one of the world’s biggest names in automotive finance, and can offer you affordable, flexible and innovative products.

Important Information:
Ford Credit: Finance subject to status. Guarantees may be required. Freepost Ford Credit.
Ford Lease: Ford Lease is provided by ALD Automotive Ltd, trading as Ford Lease, Oakwood Park, Lodge Causeway, Fishponds, Bristol, BS16 3JA. ALD Automotive is registered in England No. 987418. For the purposes of the Data Protection Act 1998 the data controllers in relation to any information you supply are Ford Motor Company Limited, FCE Bank Plc and ALD Automotive. Finance subject to status. Guarantees and indemnities may be required. ALD Automotive is authorised and regulated by the Financial Conduct Authority in respect of general insurance products. Ford Lease is a registered trademark of Ford Motor Company Limited.

Services

There are 147 Sales and 210 Aftersales Ford Transit Specialist Dealers across the UK, equipped and trained to meet Commercial Vehicle customer requirements. From these, 100 Sales dealers have achieved the ‘premium standard’ as recognition of their total commitment to delivering dedicated and professional sales and service support.

To find the location of your nearest Ford Transit Specialist Dealer, simply call the Ford Information Service on 0203 564 4444, or visit the Ford Dealer locator at www.fordvans.co.uk

Ford Protect Every new Ford Fiesta Van is protected by a 3-year/ 60,000-mile Ford Protect Classic Warranty Plan, and also comes with a 1-year Ford Assistance package.

Ford Ranger is protected by a 3-year/60,000 mile Ford Protect Classic Warranty Plan.

Ford Transit, Transit/Tourneo Custom, Transit/Tourneo Connect and Transit Couriers are protected by a 3-year/100,000-mile bumper-to-bumper warranty.

Ford Transit Chassis Cab One-Stop bodywork is covered by a 3-year/ 100,000-mile warranty and a 3-year Perforation Warranty provided by the bodywork supplier.

Ford Perforation Warranty Ford Ranger, Transit, Transit/Tourneo Custom, Transit/Tourneo Connect, Transit Courier and Fiesta Van are covered by the Ford Perforation Warranty for 12 years from the date of first registration. Subject to terms and conditions. Please see your Ford Transit Specialist Dealers for details.

Ford Assistance Ford Transit, Transit Custom, Transit Connect and Rangers are suppliedwith a minimum of a 1-year Ford Assistance roadside package. Further details are available either on www.ford.co.uk or from your local Ford Dealer.

Ford Rapid Fit Our ‘no appointments necessary, while-you-wait’ fast-fit service for exhausts, brakes, batteries and more, at over 240 sites nationally.

Ford Accident Repair Centres Approved Ford Accident Repair Centres meet rigorous Ford standards and are the best place to return your vehicle to its pre-accident condition.

Contacts

Ford Customer Relationship Centre In the unlikely event that your Ford Dealer can’t help you or if you need to speak to us directly, call 0203 564 4444 at local rates.

Ford Rental – local service nationwide Car and van rental from our latest model range. Contact your local Ford Dealer for more information.

Talkback – the company car drivers’ club This is your club for extended test drives, special events, and advice on tax and buying issues. Join free, even if you don’t drive a Ford, on www.talkbackclub.com or call 0845 605 55 66.

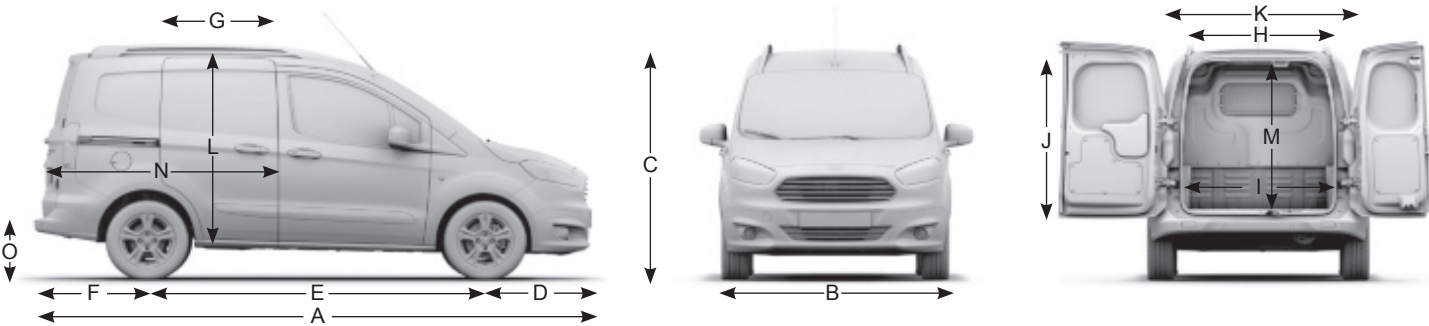
Ford Mobility Our MAGIC care centre provides free information on all motoring and mobility issues, including special offers for HRDLA and Motability recipients. Call free on 0800 240 241.

*Subject to terms and conditions.

Dimensions

A	Overall length	4157
B	Overall width without mirrors	1764
B	Overall width with mirrors	2060
C	Overall height (unladen)	1747
D	Front overhang	819
E	Wheelbase	2489
F	Rear overhang	849
G	Side door entry width, with bulkhead	453
H	Rear door opening width at floor level	1103
I	Loadspace width between wheel arches	1012
J	Rear door opening height	1100
K	Loadspace width	1488
L	Side door opening height	1044
M	Loadspace floor to roof	1244
N	Loadspace length (max; to bulkhead)	1620
N	Loadspace length (laden to belt line)	1357
N	Loadspace length (back of front seat, Kombi)	1401
N	Loadspace length (passenger’s fold-flat seat down)	2591
O	Loading height (unladen)	547
	Front track	1494
	Rear track	1479
	Ground clearance	145
	Cargo volume Van (cu. m) VDA/SAE	1.9/2.3
	Cargo volume Van (cu.m) VDA/SAE with flexible bulkhead	2.4/2.6
	Cargo volume Kombi (2nd row seat up) VDA/SAE	0.7/1.0
	Cargo volume Kombi (2nd row seat folded) VDA/SAE	1.7/1.9
Additional information		
Interior – Front		
	Effective headroom	1152
	Maximum effective leg room	1066
	Shoulder room	1384
	Hip room	1321
Turning circle (m)		
	Kerb to kerb	10.5
	Wall to wall	10.9

All dimensions (shown in mm) are subject to manufacturing tolerances and refer to minimum specification models and do not include additional equipment. These illustrations are for guidance only. Dimensions may vary dependent on the model and equipment fitted.

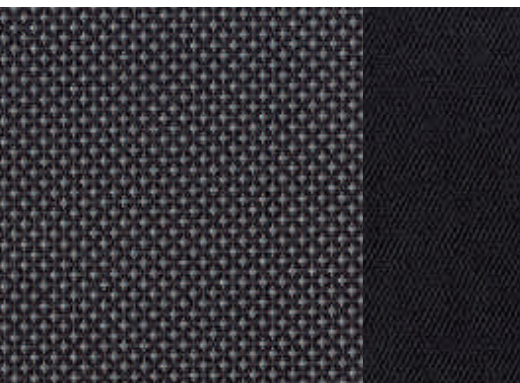


Allergy-friendly interior

Transit Courier's interior uses materials that minimise the risk of an allergic reaction. A high-performance pollen filter helps prevent dust and pollen entering the passenger compartment. (Standard)

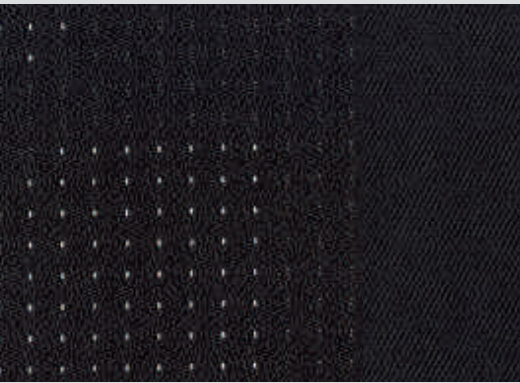
Colour and trim

Choose the colour and trim that you think best reflects your business brand.



1. Base

Seat insert: Netdot in Soft Charcoal.
Seat bolster: Max in Charcoal Black.



2. Trend

Seat insert: Babylon in Charcoal Black.
Seat bolster: Light Commercial Twill in Charcoal Black.



Blazer Blue
Solid body colour



Moondust Silver
Metallic body colour*



Tectonic Silver
Metallic body colour*



Frozen White
Solid body colour



Panther Black
Metallic body colour*



Magnetic
Metallic body colour*
(Available from August 2014)



Race Red
Solid body colour



Deep Impact Blue
Metallic body colour*



Iceberg
Metallic body colour*
(available on Trend series only)

*Metallic body colours are options at extra cost.
Note The images used are to illustrate body colours only and may not reflect current specification. Colours and trims reproduced within this brochure may vary from the actual colours, due to the limitations of the printing processes used.

12-year perforation warranty

The new Transit Courier owes its durable exterior to a thorough multi-stage painting process. From the wax-injected steel body sections to the hard-wearing top coat, new materials and application processes will ensure it retains its good looks for many years to come.

Zinc coating

Phosphate coat

Electrocoat

Top coat

Clearcoat





MY 2014.5 GBR en

Illustrations, descriptions and specifications. This catalogue was correct at the time of going to print. However, Ford policy is one of continuous product development. The right is reserved to change specifications, colours and prices of the models and items illustrated and described in this publication at any time. For the latest details always consult your Ford Dealer. **Optional equipment.** Throughout this publication, wherever a feature is described as being an 'Option' or 'Option Fitment/Pack' etc, you should assume that it will be at extra cost to the base vehicle, unless specifically stated to the contrary. All models and colour combinations are subject to availability. **Note.** Some images portrayed are of a pre-production model and/or are computer generated, therefore, the design/features on the final version of the vehicle may differ in various respects. In addition, some of the features shown on the vehicles may be optional. **Note.** This brochure contains both original Ford accessories as well as a range of products from our suppliers. **†**The identified accessories are carefully selected third party supplier branded accessories which do not come with a Ford warranty but are instead covered by the third party supplier's own warranty, the details of which can be obtained from your Ford Dealer. **Note.** The Bluetooth® word mark and logos are owned by the Bluetooth SIG, Inc. and any use of such marks by Ford Motor Company is under licence. The iPod word mark and logos are the property of Apple Inc. Other trademarks and trade names are those of their respective owners. **Note.** Some driver assistance features and safety features described in this brochure are designed to function using sensors, whose performance may be affected under certain weather or environmental conditions.

The Government fuel figures do not express or imply any guarantee of the fuel consumption of any particular vehicle. The vehicles themselves have not been tested and there are inevitably differences between individual vehicles of the same model. In addition, a vehicle may incorporate particular modifications. Furthermore, the driver's style and road and traffic conditions, as well as the extent to which the vehicle has been driven and the standard of maintenance, will affect its fuel consumption. **Insurance groups** are only as recommended by the Association of British Insurers. You should always consult your insurance adviser for confirmation.



BY APPOINTMENT TO
HER MAJESTY THE QUEEN
MOTOR VEHICLE MANUFACTURERS
FORD MOTOR COMPANY LIMITED
BRENTWOOD ESSEX



BY APPOINTMENT TO
HIS MAJESTY THE PRINCE OF WALES
MOTOR VEHICLE MANUFACTURERS
FORD MOTOR COMPANY LIMITED
BRENTWOOD ESSEX



Ford and BP – working together to reduce fuel consumption and emissions.



When you have finished with this brochure please recycle it.

Ford One Call

In the unlikely event that your Ford Dealer can't help you or if you need to speak to us directly, call 0203 564 4444

Ford Rental - local service nationwide

Car and Van rental from our latest model range. Contact your local Ford Dealer for more information



International Engine of the Year
Ford 1.0 litre EcoBoost

Ford Motability

Our dedicated care centre provides free information on all motoring and mobility issues, including special offers for HRDLA and Motability recipients. Call free on 0845 6040019

Finance

Ford Credit Customer Services 0845 712 5490
Ford Lease Customer Services 0844 600 1405



Collect Nectar points at participating Ford Dealers and Authorised Repairers now. So take a look at the latest Ford Service Promotions by visiting the Owner Services section within www.ford.co.uk.

Published by Ford Motor Company Limited, Brentwood, Essex, England.
Registered in England No. 235446.

FA 1587

BJN 202944. FoE H59E.

PN 377508/0314/GBR en

January 2014.

© Ford Motor Company Limited.

www.ford.co.uk