

ALL-NEW FORD **GALAXY**



Go Further



Visionary. Ingenious. Remarkable.
Every car bears his signature.

Henry Ford



Unlock extra content online. Use an appropriate app on your smartphone or tablet to scan the QR codes in this brochure.



Titanium X with optional 18" alloy wheels and Magnetic Grey metallic body colour.





Titanium X with optional 18" alloy wheels and Magnetic Grey metallic body colour.



Travel in first class.

A new dimension in space and comfort.





All the space you need, to do whatever you want.

With the luxury of seven full-size seats, space reigns supreme in the all-new Ford Galaxy. The innovative **EasyFold** system lets you fold each second row seat flat at the touch of a button. While for the ultimate in convenience, the new **Easyfold with Power Raise*** feature helps to speed up the loading of large items by lowering and raising the third-row seating at the touch of a button.

*Available as part of the optional Titanium Family Pack



Experience life in high definition.

Enjoy the beauty of the outdoors from the comfort of your Ford Galaxy. A full-length glass panorama roof (standard on Titanium X) lets the sun shine in and offers plenty of fresh air too, thanks to its electrically-operated sliding action. A Solar Reflect coating and powered sunblind provide shade and privacy when required.



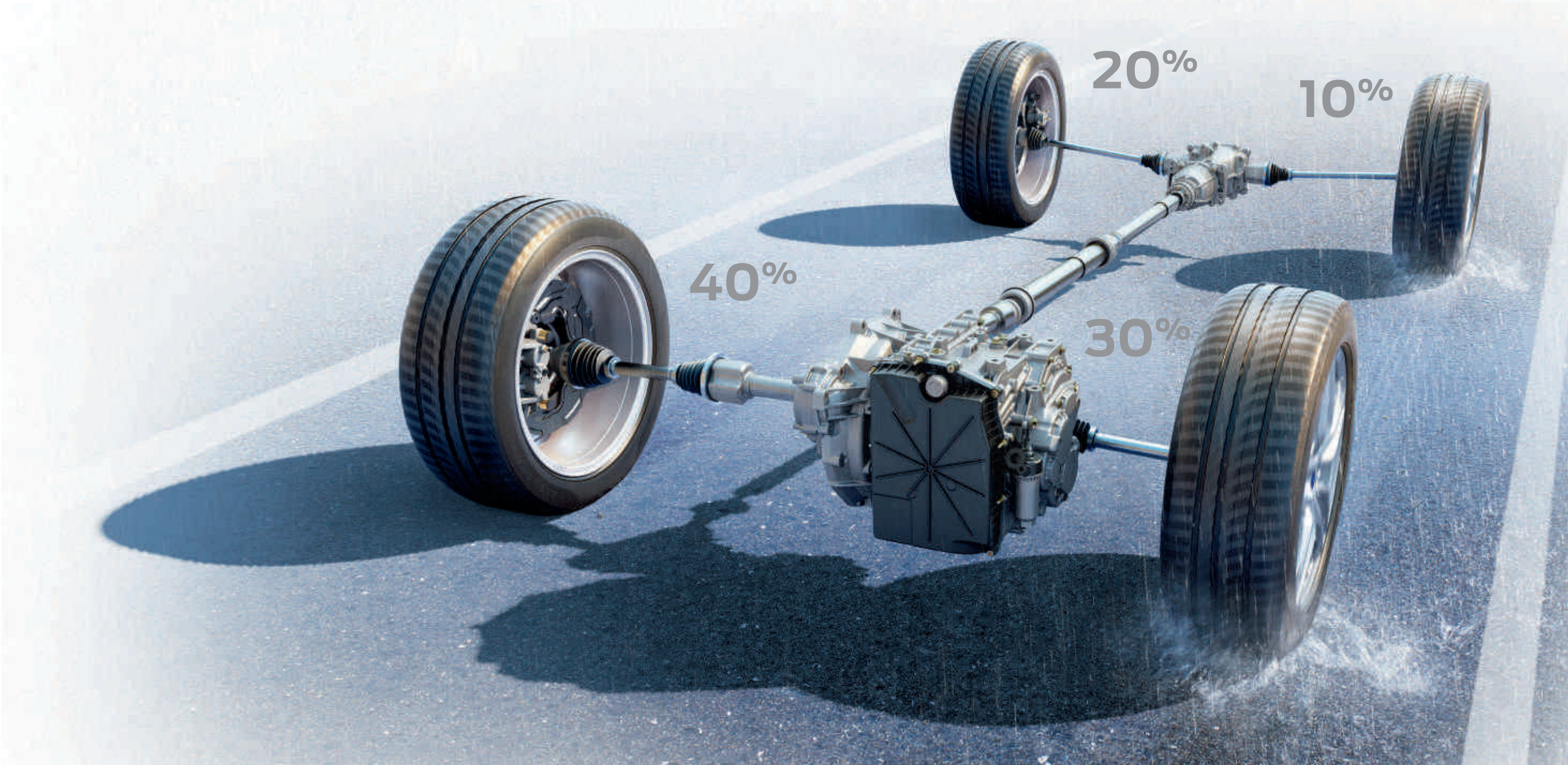


Intelligent All-Wheel Drive.

Ford Galaxy's **Intelligent All-Wheel Drive (iAWD)** system continually monitors where power is needed, and automatically applies the required torque to each individual wheel for added confidence, whatever the road conditions.



A special display on the cluster panel shows the power distribution between all four wheels. (Standard on iAWD models)





The luxury of power with economy.

High power bi-turbo diesel engine

All Ford Galaxy diesel models impress with their refined power, responsiveness and fuel economy. Now the acclaimed range is joined by a new high-power 210 PS (154 kW) 2.0 Duratorq TDCi unit that employs our latest **bi-turbo technology** for even more spirited performance.



Reacts before you know it.

Using radar and a camera, **Pre-Collision Assist** keeps a watchful eye on the road ahead for cars and pedestrians. The system is designed to read the road conditions and can alert you to a potential collision. If you don't respond to the system's warning signals, the car will automatically apply the brakes to help avoid or reduce the effect of any impact.



No ordinary headlight.

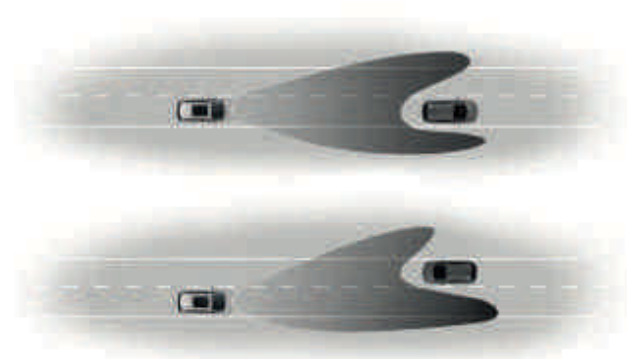
Ford Galaxy is available with our latest **Adaptive Lighting with Ford Dynamic LED headlights** (available as an option on Titanium and Titanium X). The intelligent headlight system detects different road conditions and selects the appropriate beam pattern for enhanced illumination. While the **dynamic curve light** throws the beam inside the curve to let you see further and sooner.

The headlights also incorporate new **daytime running lights**. These distinctive lights have three LED strips that also function as turn indicators, flashing sequentially towards the direction of turn.



Drive on high beam without the dazzle.

Glare-free high beam lets you drive on high beam without dazzling other road users. Sensors identify traffic ahead of your car and adjust the high beam pattern to protect other road users from glare, while illuminating the remainder of the road for greater visibility.



1. Preceding traffic

The front camera detects the light source from vehicles travelling ahead and automatically fades out individual portions of the high beam light to avoid dazzling other drivers.

2. Oncoming traffic

High beam remains active in all areas of the road around the identified vehicle, helping to illuminate objects such as parked cars or pedestrians that may normally be hidden.





Galaxy Zetec

Exterior features

- 17" 20-spoke alloy wheels
- Front fog lights
- Upper front grille with chrome surround
- Headlight courtesy delay
- Daytime running lights
- Electrically-operated and heated auto-fold door mirrors with body colour housings, side indicators and puddle lights
- Remote control central locking
- Thatcham Category 1 alarm with volume-sensing perimeter alarm
- Black-finish roof rails
- Front and rear parking distance sensors
- Locking wheel nuts

Interior features

- Ford DAB Audio System, Radio/CD with single CD, AM/FM tuner with DAB, Ford SYNC 2, 8" TFT LCD touchscreen, media hub with AUX jack, 2 USBs and SD card slot, and 8 speakers
- Ford Power Starter Button
- Dual-zone Electronic Automatic Temperature Control air conditioning, plus rear compartment air conditioning
- Power-operated front and rear windows with global opening/closing and one-shot up/down
- Gearshift Indicator light
- Overhead console with sunglasses stowage and child watch mirror
- Front seat back tray tables
- Front door scuff plates
- Carpet floor mats, front
- Second-row reading lights

- Driver's and front passenger's♦ front and side airbags
- Driver's knee bolster airbag, First-, second- and third-row side curtain airbags
- Tonneau cover
- Third-row rear seats with manual fold flat, slide and recline, and manual easy entry to the third row

Galaxy Zetec engine choices

Petrol:

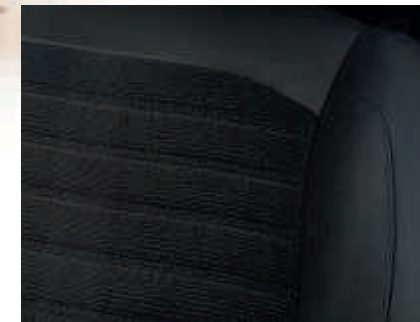
1.5 EcoBoost 160 PS (117 kW)

Diesel:

2.0 Duratorq TDCi 120 PS (88 kW)

2.0 Duratorq TDCi 150 PS (110 kW)

♦Note: A rear-facing child seat should never be placed in the front passenger seat when the Ford vehicle is equipped with an operational front passenger's airbag. The safest place for children is properly restrained on the second-row seats.



Unique seat trim
(Standard)



Power-foldable door mirrors with puddle lights
(Standard)



Galaxy Titanium

Exterior features additional to Zetec

- 17" 5x2-spoke alloy wheels
- LED daytime running lights
- Lower front grille with chrome surround
- Rear privacy glass
- Chrome side window surround
- Chrome-finish roof rails
- Automatic headlights including autowipers and Auto High Beam
- Automatic windscreen wash-wipe with variable adjustment

Interior features additional to Zetec

- Ford DAB Navigation system, Radio/CD with single CD, AM/FM tuner, DAB Radio and TMC (Traffic Message Channel), Ford SYNC 2, 8" TFT LCD touchscreen, media hub with AUX jack, 2 USBs and SD card slot, and 8 speakers
- 10.1" colour TFT cluster display
- Electronic Automatic Temperature Control Air Conditioning
- Keyless Entry system
- Interior ambient lighting
- Velour floor mats, front and rear
- Lane Keeping Assist (including Lane Keeping Aid, Auto High Beam, Driver Alert and Traffic Sign Recognition)
- Cruise control (includes Speed Limiter and intelligent speed assistance)

Galaxy Titanium engine choices

Petrol:
1.5 EcoBoost 160 PS (117 kW)
Diesel:
2.0 Duratorq TDCi 150 PS (110 kW)
2.0 Duratorq TDCi 180 PS (132 kW)



10.1" colour TFT cluster display
(Standard)



Mesh lower front grille with chrome surround
(Standard)



Galaxy Titanium X

Exterior features additional to Titanium

- Electrically-operated opening panorama roof with power sunblind
- 17" 10-spoke alloy wheels
- Power tailgate (button operated)
- Rear-view camera

Interior features additional to Titanium

- Salerno Full leather seat trim with 10-way driver seat (with memory) and 8-way passenger seat adjustment
- Variable heated driver and front passenger seats
- Active Park Assist with Parallel (includes Park Out Assist) and Perpendicular parking

Galaxy Titanium X engine choices

- Petrol:
- 2.0 EcoBoost 240 PS (176 kW)
- Diesel:
- 2.0 Duratorq TDCi 150 PS (110 kW)
 - 2.0 Duratorq TDCi 180 PS (132 kW)
 - 2.0 Duratorq TDCi 210 PS (154 kW)



Electrically-operated opening panorama roof with power sunblind
(Standard)



Active Park Assist
(Standard)

More of what you deserve.



Active Park Assist

Simply push the **Active Park Assist** button and the sensors of this innovative system locate a suitable space as you drive past. Then it automatically steers you in, while all you do is operate the accelerator, gears and brake (following on-screen instructions and audible signals). Option, standard on Titanium X.



Hands-free Power Tailgate

Opening or closing Galaxy's tailgate is easy, even when your hands are full. With the keys in your pocket or bag, simply use a gentle kicking motion under the centre of the rear bumper and the tailgate will open and close without you having to touch a thing. Available as an option.



Ford SYNC 2 with Voice Control and Touchscreen

Phone, entertainment, navigation, climate. Control it all via the 8" full-colour touchscreen or by using easy voice commands. Standard on Zetec, Titanium & Titanium X.



Adaptive Steering

Designed to adjust the steering ratio to match the car's speed. At lower speeds, a small turn of the steering wheel translates into a big turn of the front wheels, making parallel parking a breeze. At higher speeds, the steering wheel must be turned further for the same effect, enhancing directional stability and ride comfort.

Available as an option, from the end of 2015.



Blazer Blue
Solid body colour



Shadow Black
Mica body colour*



Frozen White
Solid body colour*



Ruby Red
Special metallic body colour*



Moondust Silver
Metallic body colour*



Deep Impact Blue
Metallic body colour*



Guard
Metallic body colour*

We chose Magnetic. What will you choose?

New Ford Galaxy owes its beautiful and durable exterior to a special multi-stage painting process. From the wax-injected steel body sections to the water-based paint, new materials and application processes ensure it's not only virtually solvent-free, but will retain its good looks for many years to come.



Magnetic
Metallic body colour*

*Frozen White, Mica, Metallic & Special Metallic body colours are available at extra cost.

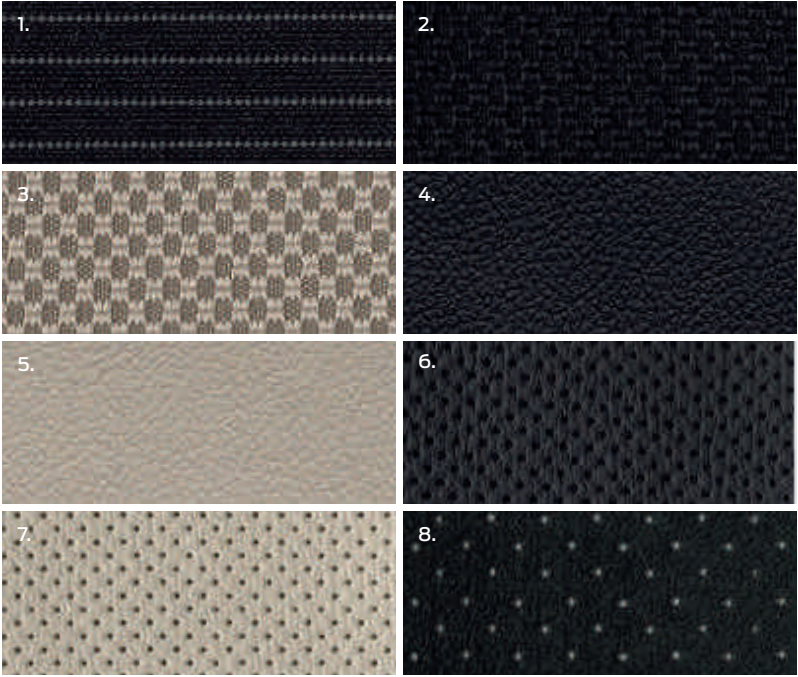
The Ford Galaxy is covered by the Ford Perforation Warranty for 12 years from the date of first registration. Subject to terms and conditions.

Note: The car images used are to illustrate body colours only and may not reflect current specification or product availability in certain markets. Colours and trims reproduced within this brochure may vary from the actual colours, due to the limitations of printing processes used.



Made to measure.

Inside the new Ford Galaxy sound absorption materials create a place of harmony and control.



1. Solitude in Ebony for Zetec
2. Axis in Ebony for Titanium
3. Axis in Medium Soft Ceramic for Titanium (Not available in UK)
4. Salerno leather in Ebony for Titanium X (Not available in UK)
5. Salerno leather in Medium Soft Ceramic (Not available in UK)
6. Salerno Micro Perf leather in Ebony for Titanium X
7. Salerno Micro Perf leather in Medium Soft Ceramic for Titanium X
8. Salerno leather with Miko Suede 712 Perf in Ebony (Not available in UK)



Model shown is a Titanium X

Power drivers seat with memory
Getting in and out of the new Galaxy Titanium X is made easier by the **10-way power-operated driver's seat with memory function**, it always returns to your ideal driving position.





Wheels



17" 5x2-spoke alloy wheels
Standard on Titanium



17" 20-spoke alloy wheels
Standard on Zetec



18" 5-spoke alloy wheels
Option on Zetec & Titanium



19" 20-spoke alloy wheels
Available as an accessory



	Zetec	Titanium	Titanium X
Wheels			
Alloy – 17" 20-spoke (Fitted with 235/55 tyres)*	●	-	-
Alloy – 17" 5x2-spoke (Fitted with 235/55 tyres)*	-	●	-
Alloy – 17" 10-spoke (Fitted with 235/55 tyres)*	-	-	●
Alloy – 17" 5-spoke (Fitted with 235/55 tyres)*	○	-	-
Alloy – 18" 5-spoke alloy wheel (Fitted with 235/50 tyres)* (not available with iAWD)	○	○	-
Alloy – 18" 5x2-spoke (Fitted with 235/50 tyres)* (not available with iAWD)	-	-	○
Steel-Mini spare wheel – 17"	●	●	●
Locking wheel nuts	●	●	●

● = Standard, ○ = Optional, at extra cost, □ = Part of option pack, at extra cost.

Main image 19" 20-spoke alloy wheel in Luster Nickel-finish.
Note The 19" wheels available on Ford Galaxy are designed to deliver even more sporting driving characteristics and a firmer ride quality compared to the other alloy wheels.



LED front indicators
Ford Galaxy's LED daytime running lights integrated into the headlights, also function as turn indicators, flashing sequentially towards the direction of turn.

Adaptive Lighting with Ford Dynamic LED headlights
The optional Adaptive Lighting system with variable light distribution provides enhanced illumination in a range of driving situations, based on speed, steering wheel angle or camera information.

City light

Country road light

Motorway light

Anti-glare poor weather light

Residential area light

Dynamic curve light

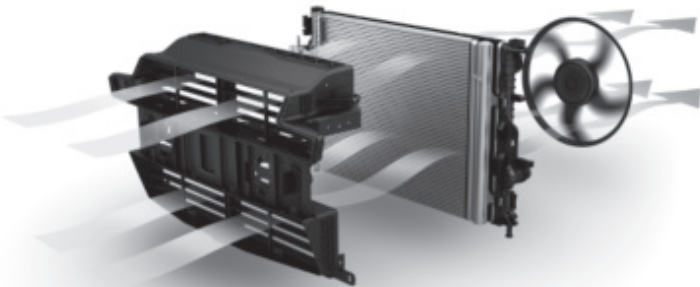
Manoeuvring light

Glare-free high beam

Exterior features

	Zetec	Titanium	Titanium X
Exterior convenience features			
Active Park Assist (enhanced) – Including parallel (with park-out assist) and perpendicular park assist	○	○	●
Headlights – Courtesy delay	●	●	●
Headlights – Halogen projector	●	●	●
Headlights – Adaptive Glare-Free highbeam LED (includes dynamic auto levelling)	–	○	○
Headlights – Halogen Daytime running lights	●	–	–
Headlights – LED Daytime running lights	–	●	●
Headlights – Manual levelling control	●	●	●
Headlights – Dynamic auto levelling	–	□	□
Headlights – Auto-lighting includes autowipers and Auto High Beam	–	●	●
Power tailgate (button operated)	–	–	●
Rear lights with LED technology	●	●	●
Rear-view camera	–	–	●
Front camera with split view and Rear view camera	–	○	○
Parking distance sensors – Front and rear	●	●	●
Wipers – Windscreen wash and wipe with variable sensitivity adjustment	●	–	–
Wipers – Automatic windscreen wash wipe with variable sensitivity adjustment	–	●	●
Windscreen – Acoustic driver and passenger side windows (standard only with AWD PowerShift models)	–	–	●
Quickclear heated windscreen, with heated windscreen washer jets	●	●	●

● = Standard, ○ = Optional, at extra cost, □ = Part of option pack, at extra cost.



Less drag, less fuel

Active Grille Shutter
To reduce wind resistance, the Active Grille Shutter automatically opens and closes to control the amount of cooling air entering the engine compartment. The result? Faster engine warm-up times and a reduction in aerodynamic drag for better fuel economy.

Exterior features

	Zetec	Titanium	Titanium X
Exterior design features			
Black finish on upper doorline	●	-	-
Chrome finish on doorline	-	●	●
Door mirrors – Power-operated, heated and power-foldable with body colour housings, side indicators and puddle lights	●	●	●
Door handles – Body colour	●	●	●
Exhaust – Dual	●	●	●
Front and rear bumper – Self colour lower/body colour upper	●	●	●
Front fog lights	●	●	●
Fog light bezel – Self colour	●	●	●
Front lower grille – Self colour	●	-	-
Front lower grille – Self colour with chrome surround	-	●	●
Front upper grille – Chrome horizontal bars with chrome finish surround	●	●	●
Panorama roof – Electric opening (includes electrically-operated sunblind)	○	○	●
Roof rails – Black finish	●	-	-
Roof rails – Chrome finish	-	●	●
Rocker panel mouldings – Self colour	●	●	●
Rear privacy glass – Dark glass on rear windows	○	●	●
Tinted glass – Light glass on rear windows	●	-	-
Detachable tow bar (with connector kit)	○	○	○

● = Standard, ○ = Optional, at extra cost, □ = Part of option pack, at extra cost.

Thule®+ roof box

Designed to carry a wide variety of loads and protect them from weather and theft. Most models come with dual-opening for easy access. (Accessory, available in various sizes)



Crossbars

Designed to perfectly fit your Ford Galaxy, crossbars are the ideal platform for a wide range of roof transportation accessories. Lockable for protection against theft. (Accessory)

Retractable Tow bar

Ford's power-operated retractable tow bar automatically stows itself out of sight below the rear bumper when not in use, retaining the car's sleek looks. (Option and accessory)

ClimAir®+ wind deflectors

Reduce wind turbulence and noise, allowing you a more enjoyable drive with the windows down, even during light rain. (Accessory)

Load retention guard

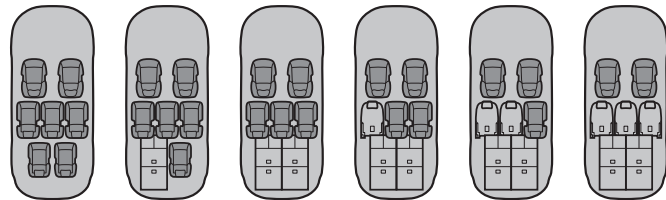
Robust retention system keeps dogs or items of luggage safely in the load compartment (removable when not in use). There is a full-height guard for fitment behind the first row (option and accessory) and a half-height guard for fitment behind the second row (accessory only, not in conjunction with Tri-zone Electronic Automatic Temperature Control)*.

*Meets European ECE-R17.07/DIN 75410-2 safety requirements.
+Item covered by third party supplier's warranty, please see back cover for details.



WWW

For more accessories for your Galaxy visit www.ford-accessories.co.uk
For a range of Ford branded items – from clothing to lifestyle products and model cars – visit www.fordlifestylecollection.com



Versatility with style

The all-new Ford Galaxy offers generous space for every occupant. With flexibility, comfort and convenience to spare, its versatile seven-seat interior can adapt with ease to accommodate your lifestyle.

Interior features

	Zetec	Titanium	Titanium X
Seats			
Front seat – Driver's manual lumbar support adjustment	●	●	–
Front seat – 4-way manual driver seat (fore/aft/up/down)	●	●	–
Front seat – 10 way power driver seat with mirror and seat memory function	–	–	●
Front seat – Passenger's manual lumbar support adjustment	●	●	–
Front seat – 4-way manual passenger seat (fore/aft/up/down/recline)	●	●	–
Front seat – 8 way power passenger seat	–	–	●
Front seats – 4-way manual height adjust passive head restraints	●	●	●
Front seats – Variable heated driver and passenger seat	–	–	●
Front seats – Driver and passenger underseat stowage	●	●	●
Front seats – Seat back tray tables	●	●	●
Rear seats – Second row seats with manual easy entry (includes fold flat, slide and recline)	●	●	●
Rear seats – Third row seats with manual fold flat, slide and recline and manual easy entry to the third row	●	●	●
● = Standard, ○ = Optional, at extra cost, □ = Part of an option pack, at extra cost. The Bluetooth® word mark and logos are owned by the Bluetooth SIG, Inc. and any use of such marks by Ford Motor Company Limited and its associated companies is under licence. Other trademarks and trade names are those of their respective owners.			

Flexibility at the touch of a button

EasyFold with Power Raise third-row seating

Galaxy's 50:50 split third-row seat comfortably accommodates two passengers. At the touch of a button, you can fold either one or both seats to the floor in a single motion to increase loadspace. A further touch will raise them back up again, effortlessly. (Available as part of the optional Titanium Family Pack on Titanium and Titanium X)



Interior features

	Zetec	Titanium	Titanium X
Climate control			
Air conditioning – Dual–Zone Electronic Automatic Temperature Control	●	–	–
Air conditioning – Tri-Zone Electronic Automatic Temperature Control	–	●	●
Rear compartment air-conditioning	●	●	●
Interior convenience features			
Ford Power Starter Button	●	●	●
Ford KeyFree System	–	○	●
Ford KeyFree System with hands free power tailgate	–	○	○
Centre console – With fixed armrest and stowage	●	●	●
Centre console – With cup holders	●	●	●
Courtesy lights – LED 2nd and 3rd row reading lights	●	●	●
Courtesy lights – Ambient lighting (front door release handles, console cup holders, console main stowage bin, media hub, console pass through and front and rear footwells)	–	●	●
Cruise control – Includes Speed Limiter and intelligent speed assistance	○	●	●
Adaptive Cruise Control (includes Pre-Collision Assist)	–	○	○
Mirror – Auto-dimming rear-view	–	●	●
MyKey®	●	●	●
Overhead console – with sunglasses stowage and child observation mirror	●	●	●
Sunblinds – Rear doors, manual	□	□	□
Windows – Fixed rear quarter glass	●	●	●
Windows – Acoustic driver and passenger side windows (standard with AWD PowerShift models only)	–	●	●
Windows – Power-operated front and rear with one touch lowering / closing	●	●	●
Windows – Global lowering/closing	●	●	●

● = Standard, ○ = Optional, at extra cost, □ = Part of an option pack, at extra cost.
The Bluetooth® word mark and logos are owned by the Bluetooth SIG, Inc. and any use of such marks by Ford Motor Company Limited and its associated companies is under licence. Other trademarks and trade names are those of their respective owners.

Heated steering wheel

Warms up at the touch of a button to add another layer of comfort between you and the cold outside. Available as an option.

Arrive refreshed and invigorated

Multi-contour front seats

Built into the front seats are 11 pneumatic cushions, arranged to provide extra support, comfort and, when required, give you a massage. Operated via the 8" colour touchscreen, they can massage your upper back, lower back, bottom and thighs to help prevent muscle fatigue on long journeys. Both front seats are covered in perforated leather and include a cooling and heating function and 8-way power adjustment (Not available in the UK).



Connects with your voice,
responds to your touch



Ford SYNC 2 with Voice Control and Touchscreen lets you select music, control navigation, find a fuel station* or a place to eat*, adjust interior temperature, make and receive hands-free calls and choose contacts from your phone list with remarkably simple voice commands, or via the 8" colour touchscreen. It will even read out your incoming text messages.

*Only available on Zetec with optional Ford DAB Navigation system



Remote audio controls

Keep your hands on the wheel and your MP3 player on the right track. (Remote audio controls and USB connection are standard)

Digital-analogue instrument cluster

A brightly-lit instrument panel delivers clear readouts of your vehicle's performance. Further displays include in-car entertainment details and driver assistance feature information.

Ford SYNC 2 with Voice Control and Touchscreen

Control your phone, navigation, music and media inputs, and climate control using simple voice commands or via the 8" colour touchscreen.

For the ultimate audio experience, the optional premium Sony DAB Navigation system combines smart design with exceptional sound reproduction. Features include a large rotary control, plus twelve high-quality Sony speakers for outstanding performance.



Interior features

	Zetec	Titanium	Titanium X
Audio and communication systems			
Ford DAB Radio/CD, single CD, AM/FM dual tuner radio with 5th channel phased diversity and DAB, DM8-8" TFT LCD Touchscreen, 8 speaker primary audio, Ford SYNC 2, compass display, media hub with AUX jack, 2 USB and SD card slot, and GPSPM	●	–	–
Ford DAB Navigation system, Radio/CD/SD-navigation, single CD, AM/FM dual tuner radio with 5th channel phased diversity, DAB and TMC (Traffic Message Channel), DM8-8" TFT LCD Touchscreen, 8 speaker primary audio, Ford SYNC 2, compass display, media hub with AUX jack, 2 USB and SD card slot, and GPSPM	○	●	●
Sony DAB Navigation system, Radio/CD/SD-navigation, single CD, AM/FM dual tuner radio with 5th channel and phased diversity, DAB and TMC (Traffic Message Channel), cluster level 3, DM8-8" TFT LCD Touchscreen, 12 speaker Sony audio, Ford SYNC 2, compass display, media hub with AUX jack, 2 USB, SD card slot and GPSPM	–	○	○
Instrument cluster – 2.3" with monochrome display	●	–	–
Instrument cluster – 10.1" with colour TFT display	–	●	●
Loadspace			
Load compartment 4 tie down rings	●	●	●
Load floor storage compartment with latch and pull cup handle	●	●	●
Tonneau cover	●	●	●

Interior features

	Zetec	Titanium	Titanium X
Interior design features			
A-Pillar – Fabric	●	●	●
B-Pillar – Fabric	–	●	●
Floor mats – Carpet, front	●	–	–
Floor mats – Carpet, front and rear deluxe (includes 3rd row floor mats)	–	●	●
Gearshift knob – Leather-trimmed	●	●	●
Scuff plates – Bright finish front door	●	●	●
Steering wheel – Leather wrapped	●	●	●
Steering wheel – Heated (only available with heated front seats)	–	–	○

● = Standard, ○ = Optional, at extra cost, □ = Part of an option pack, at extra cost.
The Bluetooth® word mark and logos are owned by the Bluetooth SIG, Inc. and any use of such marks by Ford Motor Company Limited and its associated companies is under licence. Other trademarks and trade names are those of their respective owners.

Smart technology

The all-new Ford Galaxy comes with an impressive list of technologies designed to make life easier for you and those around you.

1. Front Split-view camera

Provides a 180-degree view from the very front of your car to the left- and right-hand sides. Particularly useful at junctions and when driving forwards out of parking spaces where your lateral view is impaired.

2. Traffic Sign Recognition®

Designed to automatically read standard format road-speed signs and display the posted speed limit in the instrument cluster.

3. Blind Spot Information System with Cross Traffic Alert®†

As another vehicle – a car, van or lorry – enters your blind spot, the system is designed to alert you with a warning light built into the driver's and passenger's door mirrors.

4. Active Park Assist®

Ultrasonic sensors confirm whether the gap is large enough to park in and the steering is then automatically controlled while you operate the pedals.

5. Pre-Collision Assist®

Uses the forward-facing camera and radar to identify potential frontal collisions. Provides an audible and visual warning, pre-charges the braking system and can automatically apply the brakes if you fail to react.

6. Lane Keeping Alert and Lane Keeping Aid®††

Designed to recognise when you approach lane markings without using the indicator, and alerts you with vibrations through the steering wheel. If the system detects that an unintentional lane change is likely to occur, it is designed to apply a steering torque back towards the lane you were in.

7. Intelligent Speed Assist®

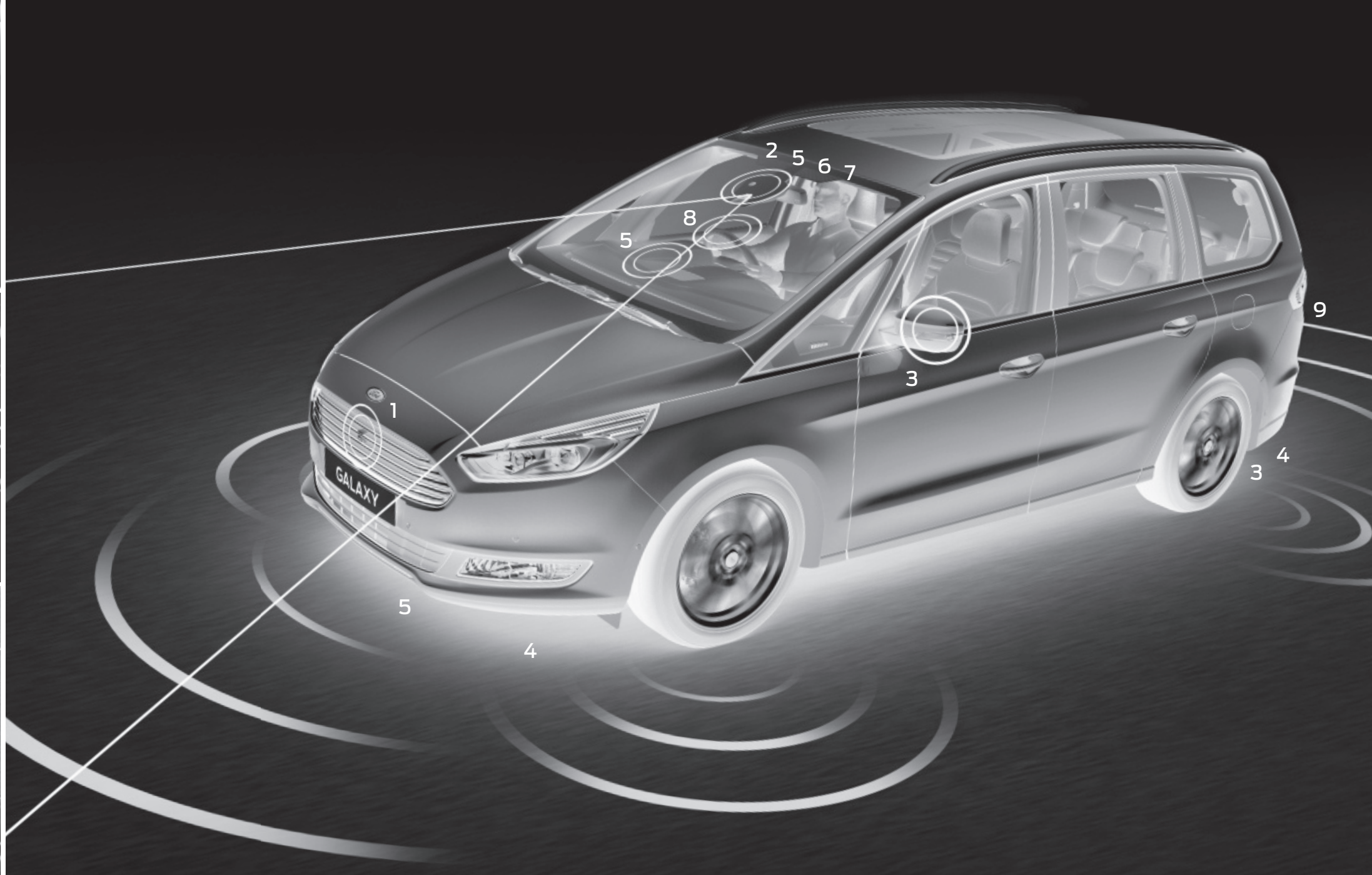
Combines the Active Speed Limiter Device with Traffic Sign Recognition. When activated, the system identifies and sets the vehicle's speed to the prevailing speed limit. The car drives normally, but cannot exceed the speed limit unless the system is overridden by the driver.

8. Ford MyKey®

This innovative feature lets you tailor and limit car settings – like top speed and audio volume – to suit individual users. This can help prevent the car being used in a manner that could detract from good and safe driving.

9. Rear-view Camera

Select reverse gear and the rear-view camera comes on automatically in the centre stack display, allowing you to see objects behind your car. Special guidance graphics indicate the width and centre line of the car to help you manoeuvre more easily and safely.



®Uses sensors.
®Designed to operate at speeds below 19mph. †Designed to operate at speeds above 6mph.
††Operates at speeds over 40mph on multi-lane roads with clearly visible lane markings.

Safety and security

	Zetec	Titanium	Titanium X
Safety and driver assistance			
Ford Intelligent Protection System (IPS) ¹⁾	●	●	●
Anti-lock braking system (ABS) with Electronic Brake-Force Distribution (EBD) ¹⁾	●	●	●
Curve Control ¹⁾	●	●	●
Roll Stability Control ¹⁾	●	●	●
Blind Spot Information System with Cross Traffic Alert ¹⁾	○	○	○
Lane Keeping Aid ²⁾ (including Lane Keeping Aid ²⁾ , Auto High Beam ¹⁾ , Driver Alert ²⁾)	○	●	●
Traffic Sign Recognition ²⁾	□	●	●
Airbags – Driver and front passenger's* ¹⁾	●	●	●
Airbags – Front side impact ¹⁾	●	●	●
Airbags – Driver's knee bolster ¹⁾	●	●	●
Airbags – Driver and passenger's first, second and third row side curtain ¹⁾	●	●	●
Airbags – Passenger airbag deactivation switch ¹⁾	●	●	●
Security			
Childproof door and window locks on rear doors	●	●	●
Remote, power central single locking	●	●	●
Thatcham Category 1 alarm (includes remote central/double locking)	●	●	●

● = Standard, ○ = Optional, at extra cost, □ = Part of option pack, at extra cost. ¹⁾Safety feature, ²⁾Driver assistance feature.
***Note: A rear-facing child seat should never be placed in the front passenger seat when the Ford vehicle is equipped with an operational front passenger's airbag. The safest place for children is properly restrained on the second-row seats.**

Intelligent Protection System(IPS)¹⁾

Ford Galaxy's advanced Intelligent Protection System (IPS)¹⁾ uses a range of sophisticated technologies that are designed to help keep you protected, including an ultra-high strength steel safety cage¹⁾, Electronic Stability Control (ESC) and front and curtain airbags¹⁾.

The Ford Galaxy's IPS¹⁾ includes:

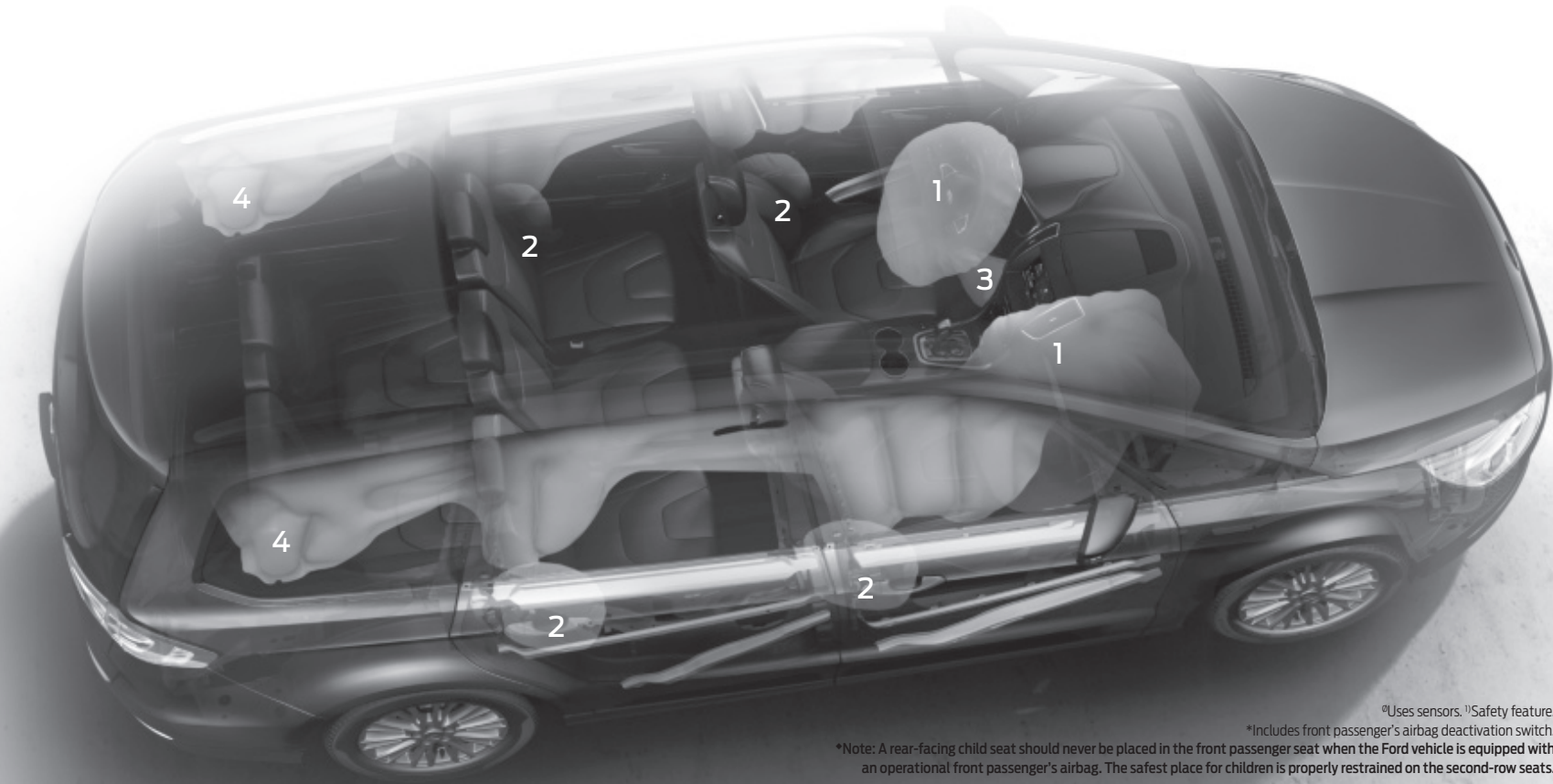
1. Driver's and front passenger's airbags^{♦*1)}

2. Driver's, front passenger's and second row (option) side impact airbags¹⁾

3. Driver's inflatable knee airbag¹⁾

4. Side curtain airbags for front and rear seats¹⁾
5. Seat belt pre-tensioners and load-limiters on all second-row seats

6. Seat belt minders on all seats



¹⁾Uses sensors. ¹⁾Safety feature.
*Includes front passenger's airbag deactivation switch.
***Note: A rear-facing child seat should never be placed in the front passenger seat when the Ford vehicle is equipped with an operational front passenger's airbag. The safest place for children is properly restrained on the second-row seats.**

Mechanical features

	Zetec	Titanium	Titanium X
Steering			
Electric power-assisted steering (EPAS)	●	●	●
Adaptive Front Steering (available from late 2015)	○	○	○
Gear Shift indicator light (Enabled)	●	●	●
Steering column – Rake- and reach-adjustable	●	●	●
Suspension			
Suspension – Self-levelling (not available with iAWD)	○	○	○
Technology			
Auto-Stop-Start system	●	●	●

● = Standard, ○ = Optional, at extra cost. □ = Part of an option pack, at extra cost.

Option Packs

	Zetec	Titanium	Titanium X
Option packs			
Zetec Family Pack – Manual rear door sunblinds, 230V Power Outlet, and Reversible/Foldable Load Mat	○	–	–
Titanium Family Pack – Manual rear door sunblinds (2nd row), Cargo Floor Net, 230V Power Outlet, Power/Easy Fold Flat 3rd Row Seats, and Reversible/Foldable Load Mat	–	○	○
Variable heated front seats	○	○	●
Heated steering wheel and Variable heated front seats	○	○	○

● = Standard, ○ = Optional, at extra cost, □ = Part of option pack, at extra cost.

Helps you find a space.
And get in. And get out again



Active Park Assist

Can help you either parallel park or park perpendicular to the road. Once activated, the enhanced system can help locate a suitable space as you drive past. It automatically steers you in, while you operate the pedals (following on-screen and audible signals).

Park-Out Assist

Designed to help you get out of a parallel parking space in the same way.



Improved response

High Power bi-turbo diesel engine

Efficient, refined and powerful, the new high-power 210 PS (154 kW) Duratorq TDCi diesel engine delivers significantly higher outputs and lower fuel consumption than a conventional diesel. The electronically-controlled sequential bi-turbo design helps ensure optimum efficiency, with both smooth and strong acceleration across the speed range, and excellent performance feel.

All our engines – petrol and diesel – are equipped with Auto-Start-Stop that automatically cuts off the engine when the car comes to a stop, further reducing exhaust emissions and fuel consumption.

Fuel and performance

The fuel economy figures quoted in the table below are achieved by following strict EU governed test procedures and are specifically designed to enable customers to compare vehicles from all manufacturers on a like-for-like basis. Fuel consumption is directly affected by the length of the journey; number of passengers and amount of luggage carried; individual driving style; road and traffic conditions; weather conditions; vehicle age, mileage, condition and standard of maintenance; use of vehicle features such as air conditioning; and any modifications to the vehicle such as the addition of a roof rack. Your fuel economy will vary based on these and other factors and, for these reasons, many drivers may not achieve the EU fuel economy figures (below) in day-to-day driving, although the vehicle is technically capable of doing so.

	Euro Stage	Transmission	Maximum Power PS (kW)	Torque Nm	CO ₂ emissions (g/km) ⁹⁰	Fuel consumption in MPG (L/100 km) ⁹⁰			Performance ^a		
						Urban	Extra Urban	Combined	Max speed (Mph)	0-62 mph (secs)	31-62 mph* (secs)
1.5 EcoBoost (160 PS (117 kW)) (with Auto-Start-Stop)	Stage VI	M6	160 PS (117 kW)	240	149	35.3 (8.0)	50.4 (5.6)	43.5 (6.5)	124	10	10.5
2.0 EcoBoost (240 PS (176 kW)) (with Auto-Start-Stop)	Stage VI	A6 (Auto)	240 PS (176 kW)	345	180	27.4 (10.3)	43.5 (6.5)	35.8 (7.9)	140	8.6	n/a
2.0 Duratorq TDCi (120 PS (88 kW)) (with Auto-Start-Stop)	Stage VI + DPF	M6	120 PS (88 kW)	310	129	50.4 (5.6)	61.4 (4.6)	56.5 (5.0)	114	13.6	13.1
2.0 Duratorq TDCi (150 PS (110 kW)) (with Auto-Start-Stop)	Stage VI + DPF	M6	150 PS (110 kW)	350	129	50.4 (5.6)	61.4 (4.6)	56.5 (5.0)	123	10.9	10.9
2.0 Duratorq TDCi (150 PS (110 kW)) (with Auto-Start-Stop)	Stage VI + DPF	M6 iAWD	150 PS (110 kW)	350	139	46.3 (6.1)	57.7 (4.9)	52.3 (5.4)	122	12.2	11.7
2.0 Duratorq TDCi (150 PS (110 kW)) (with Auto-Start-Stop)	Stage VI + DPF	MPS6 (PowerShift)	150 PS (110 kW)	350	139	46.3 (6.1)	57.7 (4.9)	52.3 (5.4)	122	10.9	n/a
2.0 Duratorq TDCi (180 PS (132 kW)) (with Auto-Start-Stop)	Stage VI + DPF	M6	180 PS (132 kW)	400	129	50.4 (5.6)	61.4 (4.6)	56.5 (5.0)	131	9.8	9.7
2.0 Duratorq TDCi (180 PS (132 kW)) (with Auto-Start-Stop)	Stage VI + DPF	MPS6 (PowerShift)	180 PS (132 kW)	400	139	46.3 (6.1)	57.7 (4.9)	52.3 (5.4)	129	9.6	n/a
2.0 Duratorq TDCi (180 PS (132 kW)) (with Auto-Start-Stop)	Stage VI + DPF	MPS6 (PowerShift) iAWD	180 PS (132 kW)	400	149	44.1 (6.4)	52.3 (5.4)	48.7 (5.8)	128	10.6	n/a
2.0 Duratorq TDCi (210 PS (154 kW)) (with Auto-Start-Stop)	Stage VI + DPF	MPS6 (PowerShift)	210 PS (154 kW)	450	144	44.8 (6.3)	55.4 (5.1)	51.4 (5.5)	135	8.9	n/a

M6 = 6-speed manual, M6 iAWD = 6-speed manual with Intelligent All Wheel Drive, MPS6 = PowerShift 6-speed automatic, MPS6 iAWD = PowerShift 6-speed automatic with Intelligent All Wheel Drive, A6 = Automatic. ^aIn 4th gear. ⁹⁰Ford test figures. ⁹⁰The declared Fuel/Energy Consumptions, CO₂ emissions and electric range are measured according to the technical requirements and specifications of the European Regulations (EC) 715/2007 and (EC) 692/2008 as last amended. Fuel consumption and CO₂ emissions are specified for a vehicle variant and not for a single car. The applied standard test procedure enables comparison between different vehicle types and different manufacturers. In addition to the fuel efficiency of a car, driving behaviour as well as other non-technical factors play a role in determining a car's fuel/energy consumption, CO₂ emissions and electric range. CO₂ is the main greenhouse gas responsible for global warming. A guide on fuel economy and CO₂ emissions which contains data for all new passenger car models is available at any point of sale free of charge or can be downloaded from <http://carfueldata.dft.gov.uk/>

Ford EcoBoost engines

Ford's award-winning EcoBoost petrol engines deliver the same performance as larger engines, but with superior fuel economy and lower emissions. For example, the new 1.5 EcoBoost engine develops 160 PS (117 kW), yet achieves a combined fuel consumption of 43.5 mpg*, with CO₂ emissions of only 149 g/km*.

While the 2.0 EcoBoost produces 240 PS (176 kW) and returns up to 35.8 mpg*.

Ford EcoBoost. More power, less fuel

*Ford test figures (manual transmission).

Weights and loads

	Euro Stage	Kerbweight (kg)*	Gross Vehicle Mass (kg)	Gross Train Mass (kg)	Max. Towable Mass (braked) (12%*) (kg)	Max. Towable Mass (braked) (8%*) (kg)	Max. Towable Mass (unbraked) (kg)
1.5 EcoBoost (160 PS (117 kW)) (with Auto-Start-Stop) 6-speed manual 4x2	Stage VI	1708	2510	4110	1600	1800	750
2.0 EcoBoost (240 PS (176 kW)) (with Auto-Start-Stop) 6-speed auto 4x2	Stage VI	1733	2585	4385	1800	1800	750
2.0 Duratorq TDCi (120 PS (88 kW)) (with Auto-Start-Stop) 6-speed manual 4x2	Stage VI + DPF	1755	2570	4070	1500	2000	750
2.0 Duratorq TDCi (150 PS (110 kW)) (with Auto-Start-Stop) 6-speed manual 4x2	Stage VI + DPF	1755	2600	4600	2000	2000	750
2.0 Duratorq TDCi (150 PS (110 kW)) (with Auto-Start-Stop) 6-speed manual 4x4	Stage VI + DPF	1813	2655	4655	2000	2000	750
2.0 Duratorq TDCi (150 PS (110 kW)) (with Auto-Start-Stop) PowerShift 6-speed auto 4x2	Stage VI + DPF	1760	2600	4600	2000	2000	750
2.0 Duratorq TDCi (180 PS (132 kW)) (with Auto-Start-Stop) 6-speed manual 4x2	Stage VI + DPF	1757	2600	4600	2000	2000	750
2.0 Duratorq TDCi (180 PS (132 kW)) (with Auto-Start-Stop) PowerShift 6-speed auto 4x2	Stage VI + DPF	1760	2600	4600	2000	2000	750
2.0 Duratorq TDCi (180 PS (132 kW)) (with Auto-Start-Stop) PowerShift 6-speed auto 4x4	Stage VI + DPF	1841	2685	4685	2000	2000	750
2.0 Duratorq TDCi (210 PS (154 kW)) (with Auto-Start-Stop) Powershift 6-speed auto 4x2	Stage VI + DPF	1779	2620	4620	2000	2000	750

*Represents the lightest kerbweight assuming driver at 75 kg, full fluid levels and 90% fuel levels, subject to manufacturing tolerances and options, etc., fitted. **Towing limits** quoted represent the maximum towing ability of the vehicle at its Gross Vehicle Mass to restart on a 12 per cent gradient at sea level. The performance and economy of all models will be reduced when used for towing. **Nose weight limit** is a maximum of 90 kg on all models. **Gross Train Mass** includes trailer weight. *Gradient at sea level.

Dimensions

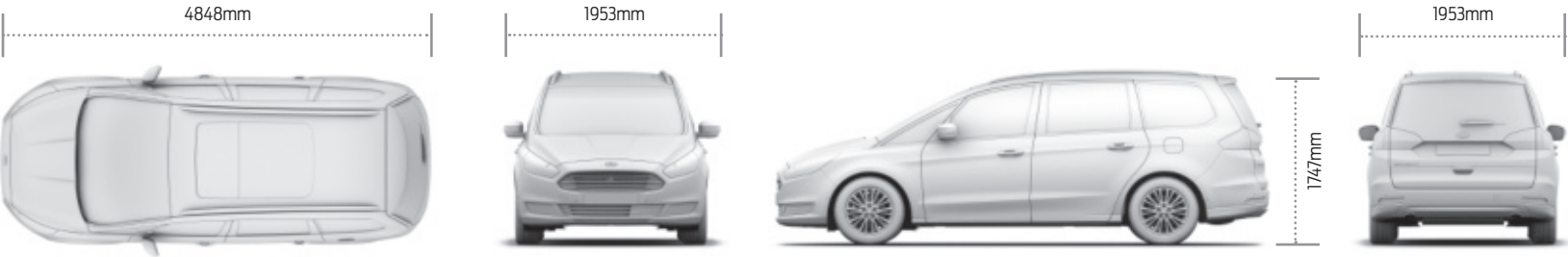
Exterior (mm)	
Overall length without towbar	4848
Overall width with/without mirrors	2137/1916
Overall height (unladen)	1747
Turning circle – kerb-to-kerb (m)	11.6*
Luggage capacity (litres)†	
7-seat mode (laden to top of seat) (min./max.)	300
5-seat mode (laden to roof) (nominal/max.)	1206/1301
2-seat mode (laden to roof)	2339
Fuel tank capacity (litres)	
Petrol	66.2
Diesel	68.1**

†Measured in accordance with ISO 3832. Dimensions may vary dependent on the model and equipment fitted. *12.3m with 19" Alloy wheels. **64.4 on iAWD variants.

Colour and trim

Model	Zetec	Titanium	Titanium X	
Seat facing trim and colour	Solitude in Ebony	Axis in Ebony	Salerno Leather in Ebony	Salerno Leather in Medium Soft Ceramic
Seat bolster trim and colour	Omni in Ebony	Omni in Ebony	Salerno Leather in Ebony	Salerno Leather in Medium Soft Ceramic
Door trim insert and colour	Omni cloth in Ebony	Omni cloth in Ebony	Vinyl in Ebony	Vinyl in Medium Soft Ceramic
Instrument panel strip finish	Painted Ano Grey	Aluminium	Aluminium	Aluminium
Centre stack bezel finish	Charcoal Metallic	Sony Silky Black	Sony Silky Black	Sony Silky Black
Instrument panel colour: Upper/Lower	Ebony/Ebony	Ebony/Ebony	Ebony/Ebony	Ebony/Ebony
Solid body colours				
Blazer Blue	●	●	●	●
Frozen White*	○	○	○	○
Metallic body colours*				
Deep Impact Blue	○	○	○	○
Guard	○	○	○	○
Magnetic	○	○	○	○
Moondust silver	○	○	○	○
Panther Black	○	○	○	○
Ruby Red**	○	○	○	○

● = Standard, ○ = Option, at extra cost.
*Metallic, Frozen White and **Special Metallic paint are optional, available at extra cost.



[illegible]

Choose

Use the form opposite to specify your new car right down to the wheels, audio, options and accessories, then take it to your Ford Dealer.

You can also specify your new car online using the Ford Configurator. It lets you instantly see what your car will look like – inside and out – from multiple angles. And a tally of your choices and their prices helps you keep to your budget. Visit www.ford.co.uk/ConfigureyourCar

Finance

When it comes to financing your car, our size and expertise means we're well placed to provide you with a wide range of finance products.

Ford Credit* provides a range of finance products for your car whether you are a private or business user.

Ford Lease[^] specialises in contract hire and leasing and provides an alternative range of finance plans which can be tailored to suit your business. Business users only.

For more information about our finance products visit www.ford.co.uk

Drive

When you drive away in your new car, we're with you all the way. Ford has the largest authorised service network in the UK to help you keep your car in the best condition.

And should your new Ford ever require accident repair, a Ford Accident Repair Centre is the best place to get your car back to its pre-accident condition and on the road as quickly as possible.

Contact

Ford Credit Customer Services 0845 712 5490
Ford Lease Customer Services 0844 600 1405

To configure your Ford online visit
www.ford.co.uk/ConfigureyourCar
To look at finance for your Ford visit www.fordcredit.co.uk/BuyingAndProtectingYourFord
Business users visit www.ford.co.uk/FordFleet



Insurance Groups

Insurance Groups	Euro Stage	Zetec	Titanium	Titanium X
1.5 EcoBoost (160 PS (117 kW)) (with Auto-Start-Stop) 6-speed manual 4x2	Stage VI	19E	20E	21E
2.0 EcoBoost (240 PS (176 kW)) (with Auto-Start-Stop) 6-speed auto 4x2	Stage VI	–	26E	26E
2.0 Duratorq TDCi (120 PS (88 kW)) (with Auto-Start-Stop) 6-speed manual 4x2	Stage VI + DPF	17E	–	–
2.0 Duratorq TDCi (150 PS (110 kW)) (with Auto-Start-Stop) 6-speed manual 4x2	Stage VI + DPF	20E	21E	21E
2.0 Duratorq TDCi (150 PS (110 kW)) (with Auto-Start-Stop) 6-speed manual 4x4	Stage VI + DPF	–	21E	–
2.0 Duratorq TDCi (150 PS (110 kW)) (with Auto-Start-Stop) PowerShift 6-speed auto 4x2	Stage VI + DPF	20E	21E	21E
2.0 Duratorq TDCi (180 PS (132 kW)) (with Auto-Start-Stop) 6-speed manual 4x2	Stage VI + DPF	–	24E	24E
2.0 Duratorq TDCi (180 PS (132 kW)) (with Auto-Start-Stop) PowerShift 6-speed auto 4x2	Stage VI + DPF	–	24E	24E
2.0 Duratorq TDCi (180 PS (132 kW)) (with Auto-Start-Stop) PowerShift 6-speed auto 4x4	Stage VI + DPF	–	24E	24E
2.0 Duratorq TDCi (210 PS (154 kW)) (with Auto-Start-Stop) Powershift 6-speed auto 4x2	Stage VI + DPF	–	–	28E

E = Exceeds security requirement. Insurance ratings are issued by the Association of British Insurers and are shown above on the 1-50 rating scales.

Illustrations, descriptions and specifications. This catalogue was correct at the time of going to print. However, Ford policy is one of continuous product development. The right is reserved to change specifications, colours and prices of the models and items illustrated and described in this publication at any time. For the latest details always consult your Ford Dealer. **Optional equipment.** Throughout this publication, wherever a feature is described as being an 'Option' or 'Option Fitment/Pack' etc, you should assume that it will be at extra cost to the base vehicle, unless specifically stated to the contrary. All models and colour combinations are subject to availability. **Note.** Some images portrayed are of a pre-production model and/or are computer generated, therefore, the design/features on the final version of the vehicle may differ in various respects. In addition, some of the features shown on the vehicles may be optional. **Note.** This brochure contains both original Ford accessories as well as a range of products from our suppliers. **+**The identified accessories are carefully selected third party supplier branded accessories which do not come with a Ford warranty but are covered by the third party supplier's own warranty, the details of which can be obtained from your Ford Dealer. **Note.** The Bluetooth® word mark and logos are owned by the Bluetooth SIG, Inc. and any use of such marks by Ford Motor Company is under licence. The iPod word mark and logos are the property of Apple Inc. Other trademarks and trade names are those of their respective owners. **Note.** Some driver assistance features and safety features described in this brochure are designed to function using sensors, whose performance may be affected under certain weather or environmental conditions.

The Government fuel figures do not express or imply any guarantee of the fuel consumption of any particular vehicle. The vehicles themselves have not been tested and there are inevitably differences between individual vehicles of the same model. In addition, a vehicle may incorporate particular modifications. Furthermore, the driver's style and road and traffic conditions, as well as the extent to which the vehicle has been driven and the standard of maintenance, will affect its fuel consumption. **Insurance groups** are only as recommended by the Association of British Insurers. You should always consult your insurance adviser for confirmation.



Ford and BP – working together to reduce fuelconsumption and emissions.

Ford One Call

In the unlikely event that your Ford Dealer can't help you or if you need to speak to us directly, call 0203 564 4444

Ford Rental - local service nationwide

Car and Van rental from our latest model range.
Contact your local Ford Dealer for more information

Ford Motability

Call our Ford Motability team on 0345 6040019

Finance

Ford Credit Customer Services 0845 712 5490
Ford Lease Customer Services 0844 600 1405

Ford Warranty and Servicing Plans

Ford Warranty and Servicing Plans		All Galaxy models
3-year/60,000 miles* Ford Warranty	●	
1-year/unlimited miles* Ford Assistance Roadside Cover (UK & Europe)	●	
2-year/2 services or 3 years/3 services* Ford Protect Premium Plan, including scheduled servicing and extended Ford Assistance	○	
1-year/unlimited miles* Paint Warranty	●	
12-year/unlimited miles* Perforation Warranty	●	

● = Standard, ○ = Optional, at extra cost.
*From the date of first registration. Subject to terms and conditions.

Ford Credit is a trading style of FCE Bank plc. which is authorised by the Prudential Regulation Authority and regulated by the Financial Conduct Authority and the Prudential Regulation Authority under firm reference number 204469.

* Ford Lease is provided by ALD Automotive Ltd, trading as Ford Lease, Oakwood Park, Lodge Causeway, Fishponds, Bristol, BS16 3JA. ALD Automotive is registered in England No. 987418. For the purposes of the Data Protection Act 1998 the data controllers in relation to any information you supply are Ford Motor Company Limited, FCE Bank plc and ALD Automotive. Finance subject to status. Guarantees and indemnities may be required. ALD Automotive is authorised and regulated by the Financial Conduct Authority in respect of general insurance products.





www.ford.co.uk



Go Further