

# Ford

## COMMERCIAL VEHICLE RANGE



Go Further



Visionary. Ingenious. Remarkable.  
Every vehicle bears his signature.

*Henry Ford*

## Ford Commercial Vehicles

### Built to get the job done.

Welcome to the Ford Commercial Vehicle Range.

The Ford Transit is one of the most iconic vehicles on the road today. Renowned since its introduction in 1965 for its capability, dependability, efficiency and car-like drive and comfort, Ford Transit's brand values and name are now shared across a full range of award-winning dedicated Commercial Vehicles; Transit Courier, Transit Connect, Transit Custom and Transit itself. Completing the most comprehensive line-up of Commercial Vehicles we've ever offered is the tough and smart Ford Ranger.

The following pages will give you an overview of each of these models.

A full brochure for each model can be requested from [www.ford.co.uk](http://www.ford.co.uk)

If you require further information or would like to arrange a test drive, our Ford Transit Centres have specialist sales staff who can provide expert advice on the right model for your business and help find financial solutions that are tailored to your needs. With repairs, maintenance and support all under one roof, plus extended opening hours for greater flexibility, Transit Centres are designed to maximise the productivity and efficiency of your Ford Commercial Vehicles... and your business. Find your local Transit Centre at [www.ford.co.uk](http://www.ford.co.uk)



# Ford Transit Courier



FWD



## Cubic capacity (cu.m)

2.3 cu.m\*

\*With flexible bulkhead. Measured in cubic metres in accordance with SAE J1100: Motor Vehicle Dimensions.

## Bodystyle and dimensions

1,770 mm\*



4,157 mm

\*Unladen, without roof rails



Transit Courier Van



Transit Courier Kombi



### Key features

- Choice of 1.0L Ford EcoBoost petrol or 1.5L Ford Duratorq TDCi diesel engines
- Van and Kombi bodystyles, with seating for up to 5 occupants
- Up to 2.59 m load length with optional folding mesh bulkhead and fold-and-dive passenger seat
- Twin asymmetric rear cargo doors (standard) and kerbside sliding side door (standard on Trend and Sport, option on Base)
- Ford SYNC with Voice Control, AppLink\*\* and Emergency Assistance (option)

\*\*Compatible mobile phone required. You can browse a list of AppLink-compatible apps from your regional Ford website, or via the Ford App Catalog available in iOS and Android stores.



### Generous space, easy access

With the standard fixed bulkhead fitted, the sliding side door (standard on Trend) opens to reveal an outstanding 0.45 m aperture, allowing loads to be accommodated with ease.



### Bulkhead options

A range of full-height, full-width DIN- and ISO-compliant bulkheads (glazed or unglazed) are available, depending on bodystyle and series. An optional folding mesh bulkhead with fold-and-dive passenger seat is also offered for extra versatility.



### Underseat stowage drawer

A handy stowage drawer beneath the driver or passenger seat is large enough to hold an A4 clipboard, tablet or a laptop computer. (Option as part of a pack)



### Device Dock

Designed to hold your smartphone or navigation device. Stream your music through the car's speakers via Bluetooth® or using a USB cable connected to the My Connection Radio.

Engine*	Power PS (kW)	Torque Nm
1.0 Ford EcoBoost	100 (75)	170
1.5 Duratorq TDCi	75 (56)	190
1.5 Duratorq TDCi	95 (71)	215

Combined fuel consumption, from (mpg)	53.3-76.3
Emissions CO <sub>2</sub> from (g/km)	96-120
Payload (kg)	577-663
GVM (kg)	1765-1795
Max load length (mm) with folding mesh bulkhead (passenger seat folded)	2593
Max load length (mm) (laden to belt line)	1358
Max load width (mm)	1488
Max load volume (m <sup>3</sup> ) <sup>o</sup>	2.6**

\*Some engines are only available on certain models. Please refer to the Transit Courier brochure or contact your Dealer for more information on fuel, performance and payload. \*\*With folding mesh bulkhead. <sup>o</sup>Measured using SAE J1100 method. All diesel engines include Diesel Particulate Filter (cDPF) and all engines are available with optional Auto-Start-Stop. All dimensions are subject to manufacturing tolerances and refer to minimum specification models and do not include additional equipment. Dimensions may vary dependent on the model and equipment fitted.

Note The Bluetooth® word mark and logos are owned by the Bluetooth SIG, Inc. and any use of such marks by Ford Motor Company Limited and its associated companies is under licence. Other trademarks and trade names are those of their respective owners.

# Ford Transit Connect



FWD



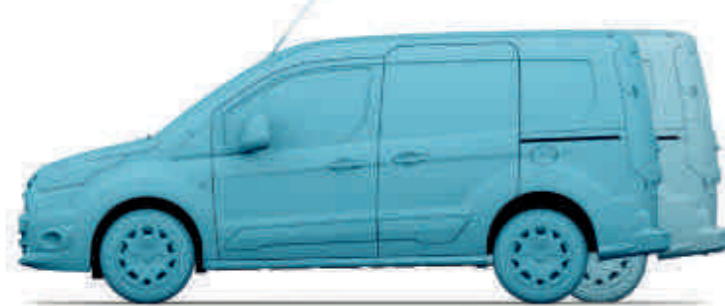
Cubic capacity range (cu.m)

2.9-3.6 cu.m\*

\*Cargo volume behind bulkhead measured in cubic metres in accordance with SAE J1100: Motor Vehicle Dimensions.

## Bodystyles and dimensions

1,861 mm\*



L1 4,418 mm

L2 4,818 mm

\*Maximum unladen height.



Transit Connect Double Cab-in-Van



Transit Connect Van



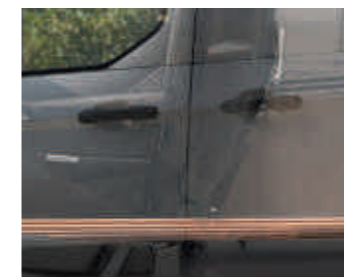
Transit Connect Kombi (M1)



### Key features

- Choice of 1.0L Ford EcoBoost petrol (100 PS) or 1.5L Duratorq TDCi diesel (75 PS/100 PS/120 PS) engines
- Van, Double Cab-in-Van and Kombi bodystyles, with seating for up to 7 occupants
- Choice of two body lengths
- Auto-Start-Stop feature to reduce fuel consumption and CO<sub>2</sub> emissions (standard on selected models, option on others)
- Up to 3.4 m load length with load-through bulkhead (L2 models)
- L2 model can carry up to four 8'x4' sheets of material when equipped with full steel bulkhead
- Dual passenger seat allows three to travel in Van variants (standard on Trend and Limited)
- Lane-Keeping Aid (option on Trend and Limited)
- Traffic Sign Recognition, Driver Alert System and Auto High Beam (option)

- Active City Stop (option)
- Movable bulkhead separating passengers from loadspace (DCiV models only)
- Ford Easy-Fuel capless refuelling system
- Rear parking distance sensors (option, standard on Limited)
- Cruise control with Adjustable Speed Limiter (option, standard on Limited)



### Load-through bulkhead

Allows the L1 Van to carry 3-metre long items, while the L2 can take 3.4-metre lengths. (Standard on Trend, Sport and Limited, option on Base)



### Automatic transmission

The 100 PS and 120 PS Duratorq TDCi diesel engines are available with a 6-speed automatic transmission, making Transit Connect easier and more relaxing to drive. (Option)



### Ford SYNC 3 with Voice Control and 6" Touchscreen

Lets you control the audio system, satellite navigation and your connected phone using simple voice commands. Integrate smartphone applications using AppLink, Apple CarPlay and Android Auto. (Option)



### Flexible dual passenger seat

The outer seat folds backwards (cinema style) to allow tall loads and boxes to be carried in the front passenger space. (Standard on Trend and Limited, not available on DCiV)

Engine*	Power PS (kW)	Torque Nm
1.0 Ford EcoBoost	100 (74)	170
1.5 Duratorq TDCi	75 (55)	190
1.5 Duratorq TDCi (manual transmission)	100 (74)	250
1.5 Duratorq TDCi (automatic transmission)	100 (74)	270
1.5 Duratorq TDCi (manual transmission)	120 (88)	270
1.5 Duratorq TDCi (automatic transmission)	120 (88)	300

Combined fuel consumption, from (mpg)	50.4-72.4
Emissions CO <sub>2</sub> from (g/km)	103-133
Payload (kg)	588-967
GVM (kg)	1960-2405
Max Load length (mm) (Van L1/L2)	1753/2153
Max Load through length (mm) (Van L1/L2)	3000/3400
Max Load width (mm) between wheel arches (Van)	1226
Max Load volume (m <sup>3</sup> ) (Van L1/L2)	2.9-3.6

Some engines are only available on certain models. Please refer to the Transit Connect brochure or contact your Dealer for more information on fuel, performance and payload. All diesel engines include Diesel Particulate Filter (cDPF) and all engines are available with optional Auto-Start-Stop. All dimensions are subject to manufacturing tolerances and refer to minimum specification models and do not include additional equipment. Dimensions may vary dependent on the model and equipment fitted.

# Ford Transit Custom



FWD

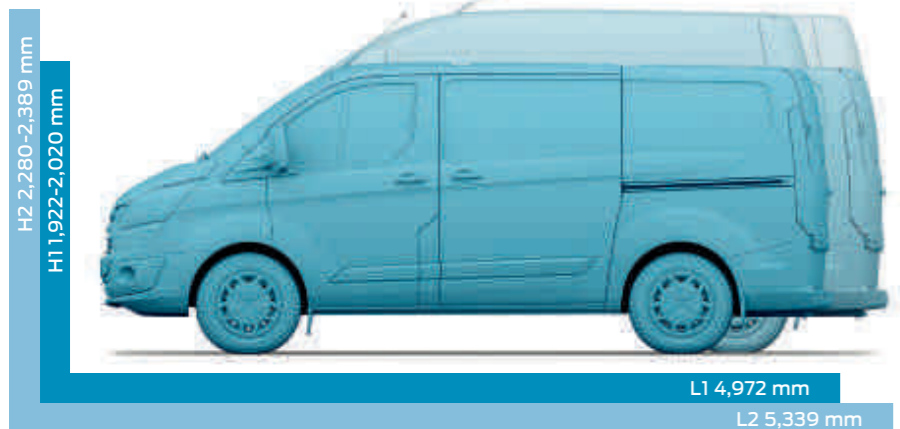


Van cubic capacity range (cu.m)

6.0-8.3 cu.m\*

\*Maximum method measures the volume of a fine-grained material in cubic metres.

## Bodystyles and dimensions



L1 4,972 mm

L2 5,339 mm

Note Height dimensions show the range from minimum to maximum of a fully laden, lowest payload vehicle to unladen highest payload vehicle.



2-9



Transit Custom Kombi



2-3



Transit Custom Van



5-6



Transit Custom Double Cab-in-Van



### Key features

- Choice of all-new Ford EcoBlue 2.0L diesel engines (105 PS/130 PS/170 PS)
- Van, Double Cab-in-Van and Kombi bodystyles, with seating for up to 9 occupants
- Choice of two body lengths and two roof heights
- Up to 3.4 m load length with load-through bulkhead (L2 models)
- 3 Europallet capability
- Selectshift 6-speed automatic transmission (option)
- Ford SYNC radio/CD system with Bluetooth®, USB connectivity, Voice Control, AppLink\*\* and Emergency Assistance (option)
- Lane-Keeping Alert with Driver Alert System and Auto High Beam (option)
- Adaptive Cruise Control with Pre-Collision Assist and Traffic Sign Recognition (option)

\*\*Compatible mobile phone required. You can browse a list of AppLink-compatible apps from your regional Ford website, or via the Ford App Catalog available in iOS and Android stores.



**All-new Ford EcoBlue diesel engine**  
Cleaner and quieter, but with more power and torque than previous models, Transit Custom's all-new Ford EcoBlue 2.0L TDCi diesel engine comes with a choice of three power and torque outputs.



**Pre-Collision Assist<sup>o</sup>**  
Using radar and a camera, **Pre-Collision Assist<sup>o</sup>** keeps a watchful eye on the road ahead. The system is designed to detect other vehicles and can alert you to a potential collision (option).



**Load-through bulkhead**  
A flip-up panel in the bulkhead allows the L1 Van to carry items of up to 3 metres in length, while the L2 Van can transport items of up to 3.4 metres. (Standard with dual passenger seat)



**Integrated roof rack**  
Capable of carrying loads of up to 130 kg (80 kg on Sport). Folds away flat when not in use to help improve fuel economy and reduce wind noise. (Option on H1)

Engine*	Power PS (kW)	Torque Nm
2.0 FordEcoBlue (Stage 6)**	105 (77)	360
2.0 FordEcoBlue (Stage 6)**	130 (96)	385
2.0 FordEcoBlue (Stage 6)**	170 (125)	405

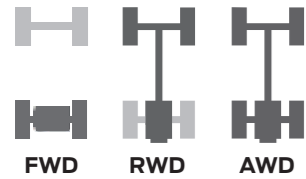
\*Some engines are only available on certain models, please contact your dealer for more information.\*\*With AdBlue<sup>o</sup>

Combined fuel consumption, from (mpg)**	43.5-46.3
CO <sub>2</sub> emissions, from (g/km)**	157-172
Payload (kg)	674-1392
GVM (kg)	2540-3365
Maximum loadspace length (up to bulkhead) (mm)	2555-2922
Maximum loadspace length (includes underseat storage) (mm)	3085-3452
Maximum loadspace width (mm)	1775
Maximum loadspace volume (with bulkhead) (cu.m) <sup>o</sup>	6.0-8.3

Some engines are only available on certain models. Please refer to the Transit Custom brochure or contact your Dealer for more information on fuel, performance and payload. All diesel engines include Diesel Particulate Filter (cDPF) and all engines are available with optional Auto-Start-Stop. \*\*Values shown with Manual Transmission and Auto-Start-Stop. All dimensions are subject to manufacturing tolerances and refer to minimum specification models and do not include additional equipment. Dimensions may vary dependent on the model and equipment fitted<sup>o</sup>Measured using Maximum Load Volume.

<sup>o</sup>Uses sensors.

# Ford Transit



Cubic capacity range (cu.m)

9.5–15.1 cu.m\*

\*Maximum method measures the volume of a fine-grained material in cubic metres.

## Bodystyles and dimensions



Note Height dimensions show the range from minimum to maximum of a fully laden, lowest payload vehicle to unladen highest payload vehicle.



Transit Van



Transit Double Cab-in-Van



### Key features

- Choice of all-new Ford EcoBlue 2.0L TDCi diesel engines (105 PS/130 PS/170 PS)
- Van and Double Cab-in-Van bodystyles, with seating for up to 7 occupants
- Three body lengths with up to 4.2 m load length and 15.1 cu.m of loadspace (L4 H3 models)
- Two roof heights providing up to 2.1 m of load height (FWD H3 models)
- Front-wheel drive (FWD), rear-wheel drive (RWD) or all-wheel drive (AWD) powertrain options available
- SelectShift 6-speed automatic transmission available on selected FWD models (option)
- Lane-Keeping Alert with Driver Alert and Auto High Beam (option)
- Adaptive Cruise Control with Pre-Collision Assist and Traffic Sign Recognition (option)



### All-new Ford EcoBlue diesel engine

Cleaner and quieter, but with more power and torque than previous models, Transit's all-new Ford EcoBlue 2.0L TDCi diesel engine comes with a choice of three power and torque outputs.



### SelectShift automatic transmission

Delivers a smooth, relaxing driving experience, especially in busy traffic. Provides the ability to lockout gears in more challenging driving conditions, e.g. on slippery surfaces or steep gradients. (Option on FWD models)



### Ford SYNC 3 with Voice Control and 6" Touchscreen

Lets you control the audio system, satellite navigation and your connected phone using simple voice commands. Integrate smartphone applications using AppLink, Apple CarPlay and Android Auto. (Option)



### Adaptive Cruise Control<sup>(2)</sup>

Set your desired speed and Adaptive Cruise Control maintains a pre-set distance from the vehicle in front. If the sensors detect traffic slowing ahead, your vehicle is designed to automatically slow down. When traffic has cleared, your vehicle accelerates back to the pre-selected speed. (Option)

Engine*	Power PS (kW)	Torque Nm
2.0 TDCi FordEcoBlue (Stage 6)**	105 (77)	360
2.0 TDCi FordEcoBlue (Stage 6)**	130 (96)	385
2.0 TDCi FordEcoBlue (Stage 6)**	170 (125)	405

\*Some engines are only available on certain models, please contact your dealer for more information.\*\*With AdBlue<sup>®</sup>

Combined fuel consumption, from (mpg)**	34.5-42.2
Emissions CO <sub>2</sub> , from (g/km)**	174-212
Payload (kg)	872-2169
GVM (kg)	2940-4700
Maximum loadspace length (at floor with bulkhead) (mm)	3044-4217
Maximum loadspace width (mm)	1784
Maximum load volume (with bulkhead) (cu.m) <sup>®</sup>	9.5-15.1

\*Some engines are only available on certain models. Please refer to the Transit Van brochure or contact your Dealer for more information on fuel, performance and payload. All diesel engines include Diesel Particulate Filter (cDPF) and all engines are available with optional Auto-Start-Stop (except AWD models). All dimensions are subject to manufacturing tolerances and refer to minimum specification models and do not include additional equipment. Dimensions may vary dependent on the model and equipment fitted. <sup>®</sup>Measured using Maximum Load Volume method.

<sup>®</sup>Uses sensors.  
<sup>2)</sup>Driver assistance feature.

# Ford Transit Minibus



### Key features

- Choice of 2.2L Duratorq TDCi diesel engines (125 PS/155 PS)
- Spacious interior with seating for up to 17 occupants
- Versions with extra luggage space available
- Reclining rear seats with adjustable head restraints and armrests (standard on Trend)
- Ford SYNC radio/CD system with Bluetooth®, USB connectivity, Voice Control, AppLink\*\* and Emergency Assistance
- Lane-Keeping Alert with Driver Alert
- Cruise Control with Adjustable Speed Limiter
- Adaptive Cruise Control (option)

\*\*Compatible mobile phone required. You can browse a list of AppLink-compatible apps from your regional Ford website, or via the Ford App Catalog available in iOS and Android stores.

## Bodystyles and dimensions

H3 2,502-2,756 mm  
H2 2,410-2,517 mm



L2 5,531 mm

L3 5,981 mm

L4 6,704 mm

Note Height dimensions show the range from minimum to maximum of a fully laden, lowest payload vehicle to unladen highest payload vehicle.



Transit Minibus



### Quickclear heated windscreen

Clears ice or demists the windscreen quickly, even on frosty mornings for year-round comfort and visibility. (Standard)



### Overhead storage shelves

New overhead storage shelves offer convenient stowage for your passengers' belongings. (Standard on H3 models)



### Power-operated side step

A power-operated side step extends automatically when the sliding door opens for easy passenger access. When the door is closed, the step automatically retracts. (Standard)



### Rear air conditioning

For a more comfortable travel experience, a separate air conditioning system is available for the rear passenger compartment, featuring its own rotary controls. (Standard on Trend, option on Base) Individual vents with LED lights are standard with overhead shelves.

Engine*	Maximum power PS (kW)	Maximum torque (Nm)
2.2 Duratorq TDCi (HDT6)*	125 (92)	350
2.2 Duratorq TDCi (HDT6)*	155 (114)	385

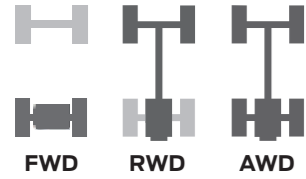
\*With AdBlue®.

\*Some engines are only available on certain models, please refer to the Transit Passenger Carriers brochure or contact your Dealer for more information on Fuel, Performance and Payload. Auto-Start-Stop is standard. All diesel engines include Diesel Particulate Filter (cDPF).

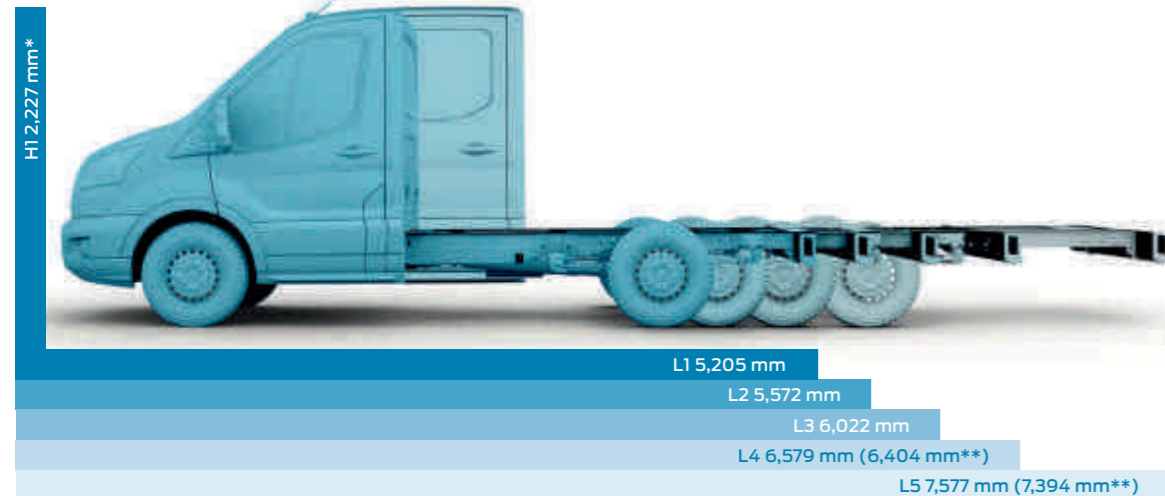
Combined fuel consumption, from (mpg)	38.2
Emissions CO <sub>2</sub> , from (g/km)	196
GVM (kg)	3500-4600
Side door entry width (mm)	1200
Maximum internal walk-through height – H2/H3 (mm)	1718-1955
Luggage space length at floor (effected models) (mm)	1095-1156
Luggage space width at floor (effected models) (mm)	1749

All dimensions are subject to manufacturing tolerances and refer to minimum specification models and do not include additional equipment.

# Ford Transit Chassis Cab/Double Cab



## Bodystyles and dimensions



\*Maximum unladen height. \*\*Chassis Double Cab.



Transit Chassis Cab



Transit Chassis Double Cab



### Key features

- Choice of all-new Ford EcoBlue 2.0L TDCi diesel engines (105 PS/130 PS/170 PS)
- Single and Double Cab bodystyles with seating for up to 7 occupants
- Five frame lengths and up to 4,700 kg GVM
- Front-wheel drive (FWD), rear-wheel drive (RWD) or all-wheel drive (AWD) powertrain options available
- SelectShift 6-speed automatic transmission available on selected FWD models (option)



### Special Vehicle Options (SVO)

The Ford SVO programme offers a comprehensive range of special options, including features to aid conversion, from heavy-duty batteries to a choice of over 100 colours to match your company's livery. For more information, please speak to your local Ford Transit Centre.



### Ford Easy-Fuel capless refuelling system

A unique safeguard ensures that nobody can accidentally fill up with the wrong fuel. Plus, no dirty fuel caps to touch. (Standard)



### Underseat stowage

Passenger seats have lift-up base cushions and underseat stowage compartments, enabling tools and equipment to be carried out of sight. (Chassis Double Cab shown)



### Towing ability

Rear Wheel Drive 350HD and 470 versions with 170PS engine, high-rated suspension and 7,000 kg gross train mass (GTM) can pull up to 3,500 kg of braked trailer load, when properly equipped. Max trailer weight will need to be reduced if maximum payload is achieved so as not to exceed maximum GTM.

Engine*	Power PS (kW)	Torque Nm
2.0 TDCi FordEcoBlue (Stage 6)**	105 (77)	360
2.0 TDCi FordEcoBlue (Stage 6)**	130 (96)	385
2.0 TDCi FordEcoBlue (Stage 6)**	170 (125)	405

\*Some engines are only available on certain models, please contact your dealer for more information. \*\*With AdBlue®

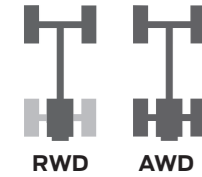
Combined fuel consumption, from (mpg)*	34.5-39.8
CO <sub>2</sub> emissions (g/km)*	184-224
Payload (kg)**	1268-2727
GVM (kg)	3140-4700
Internal float loadspace width (mm)	2038-2138
Internal float loadspace length (mm)	2795-5235

\*Some engines are only available on certain models. Please refer to the Transit Chassis Cab brochure or contact your Dealer for more information on fuel, performance and payload. All diesel engines include Diesel Particulate Filter (cDPF) and all engines are available with optional Auto-Start-Stop (except AWD models). \*\* Values are for bare chassis. All dimensions are subject to manufacturing tolerances and refer to minimum specification models and do not include additional equipment.

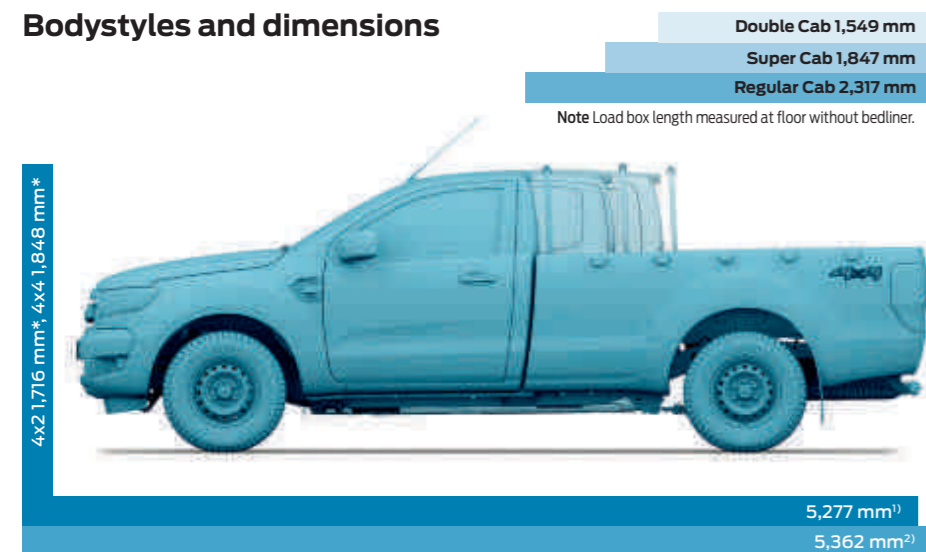
Body conversions shown are for illustrative purposes only.



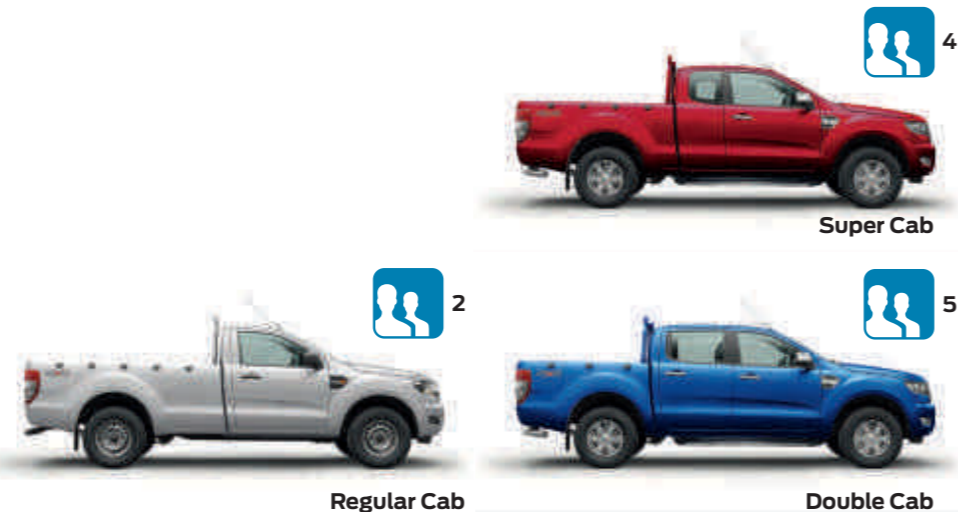
# Ford Ranger



## Bodystyles and dimensions



<sup>1)</sup>Regular Cab. <sup>2)</sup>Super Cab, Double Cab.



### Key features

- Choice of 2.2L 130 PS/160 PS and 3.2L 200 PS Duratorq TDCI diesel engines\*
- 2-door Regular Cab, 4-door Super Cab with reverse-hinged rear doors and 4-door Double Cab bodystyles
- 4x4 and 4x2 models with 6-speed manual and automatic transmissions
- Electronic Stability Control (ESC) with Traction Control
- Hill Descent Control
- Electronic shift-on-the-fly (4x4 models)
- Awarded Euro NCAP 5 star rating
- Driver and front passenger\* airbags, side impact airbags\*\*, side air curtains and driver's knee airbag
- Lane-Keeping System and Adaptive Cruise Control with Forward Alert (option on Limited and Wildtrak as a part of a pack)

\*Engine availability varies according to series.  
\*\*Not available with bench seats.



### Superb towing ability

With up to 3,500 kg maximum towing capacity (160 PS/200 PS 4x4s with a braked trailer), Ford Ranger offers some serious pulling power. Max trailer weight will need to be reduced if maximum payload is achieved so as not to exceed maximum GTM.



### Excellent wading depth

Ford Ranger is designed to drive through water up to 800 mm deep – which can be the difference between getting there or not.



### SYNC 3 with Voice Control and 8" Touchscreen

Lets you control the audio system, satellite navigation, interior climate and your connected phone using simple voice commands. Integrate smartphone applications using Applink, Apple CarPlay and Android Auto.



### Traffic Sign Recognition

Designed to automatically read standard format road-speed signs and display the last posted speed limit in the driver's instrument cluster. (Option on Limited and Wildtrak, as part of Adaptive Cruise Control).

Engine	Power kW (PS)	Torque Nm
2.2 Duratorq TDCI (Stage 6)*	96 (130)	330
2.2 Duratorq TDCI (Stage 6)*	118 (160)	385
3.2 Duratorq TDCI (Stage 6)*	147 (200)	470

\*With AdBlue®

### Dimensions (mm)

Overall length	5277-5362
Overall width without/with folded/with mirrors	1860/1977/2163
Overall height (unladen)	1706-1848
Load box length (at floor without bedliner)	1549-2317
Load box width (at floor without bedliner)	1560
Load box depth (without bedliner)	511

Manoeuvrability	4x2	4x4
<b>A</b> Ground clearance (unladen) – (mm)	229	229
<b>B</b> Angle of approach (unladen)	–	28°
<b>C</b> Angle of departure (unladen)	–	28°
<b>D</b> Tilt angle (unladen)	35°	35°
<b>E</b> Wading depth – (mm)	600	800

Dimension and Manoeuvrability figures are based on XL Single cab models. Other models may vary. Some engines are only available on certain models, please refer to the Ranger brochure or contact your Dealer for more information on fuel, performance and payload. All engines include Diesel Particulate Filter (cDPF). Auto-Start-Stop is standard for all 2.2 L 160 PS manual 4x2 models. All dimensions are subject to manufacturing tolerances and refer to minimum specification models and do not include additional optional equipment.

\*Note: A rear-facing child seat should never be placed in the front passenger seat when the Ford vehicle is equipped with an operational front passenger's airbag. The safest place for children is properly restrained on the second-row seats.

# Ford Commercial Vehicle Range

## Transit Courier



Van



Kombi

## Transit Connect



L1



L2



Double Cab-in-Van L1



Double Cab-in-Van L2



Commercial Kombi L2

## Transit Custom



Van L1 H1



Van L1 H2



Van L2 H1



Van L2 H2



Double Cab-in-Van L1 H1



Double Cab-in-Van L2 H1



Kombi L1 H1



Kombi L1 H2



Kombi L2 H1



Kombi L2 H2

## Transit



Van L2 H2



Van L2 H3



Van L3 H2



Van L3 H3



Van L4 H3



Double Cab-in-Van L2 H2



Double Cab-in-Van L2 H3



Double Cab-in-Van L3 H2



Double Cab-in-Van L3 H3



Double Cab-in-Van L4 H3

## Transit Minibus



L2 H2 11/12 seats



L3 H2 14/15 seats



L3 H3 14/15 seats



L4 H3 17/18 seats

## Transit Chassis Cab



L1



L2



L3



L4



L5



Double Cab L3



Double Cab L4



Double Cab L5

## Ranger



Regular Cab



Super Cab



Double Cab



## Our business is to keep your business moving.

At a Ford Transit Centre, you'll discover the valuable benefits of Ford Transit24. Designed to keep running costs down and you on the road, Ford Transit24 is a business to business care package of smart, affordable products and services, delivered by the experts and available exclusively through our Transit Centre commercial vehicle specialist dealer network.

- While-you-wait servicing
- Late night servicing
- Service Priority booking
- Collection and delivery\*
- Government testing and MOTs
- Like-for-like vehicle replacement\*\*
- Genuine Ford parts quality
- Speedy and accurate Ford diagnostics
- Ford trained technicians
- Interim Checks for optimum vehicle performance
- Unscheduled repairs
- Priority treatment for urgent repairs
- Free European Roadside Assistance
- Ford Protect packages to suit you
- One Call to access all the Ford services you need – 0203 3564 4444

### Efficiency, accuracy and convenience are at the heart of the Ford Transit24 commercial vehicle service promise. So, whether it's servicing, maintenance or repair you need, be sure to come and see us.

For more information and to find your nearest participating Ford commercial vehicle dealer, visit the aftersales support section at [www.ford.co.uk/fordfleet](http://www.ford.co.uk/fordfleet)

\*Collection and delivery takes place on appointment and within a reasonable travelling time (for an additional cost). We even wash your vehicle so that it looks its best. \*\*Like-for-like vehicle replacement excludes specialised or converted vehicles.

### Commercial Vehicle Finance

When it comes to financing your Ford Commercial Vehicle, our size and expertise means we're well placed to provide you with a wide range of finance products.

Ford Credit<sup>®</sup>: Provides a range of finance plans for Commercial Vehicle customers interested in owning their vehicle.

Ford Lease<sup>®</sup>: Specialises in contract hire and leasing and provides an alternative range of finance plans which can be tailored to suit your business. Business users only.

<sup>®</sup>Ford Credit: Finance subject to status. Guarantees may be required. Freepost Ford Credit.

Ford Credit is a trading style of FCE Bank plc. which is authorised by the Prudential Regulation Authority and regulated by the Financial Conduct Authority and Prudential Regulation Authority under firm reference number 204469.

<sup>®</sup>Ford Lease: Ford Lease is provided by ALD Automotive Ltd, trading as Ford Lease, Oakwood Park, Lodge Causeway, Fishponds, Bristol, BS16 3JA. ALD Automotive is registered in England No. 987418. For the purposes of the Data Protection Act 1998 the data controllers in relation to any information you supply are Ford Motor Company Limited, FCE Bank Plc and ALD Automotive. Finance subject to status. Guarantees and indemnities may be required. ALD Automotive is authorised and regulated by the Financial Conduct Authority.

**Illustrations, descriptions and specifications.** This catalogue was correct at the time of going to print. However, Ford policy is one of continuous product development. The right is reserved to change specifications, colours and prices of the models and items illustrated and described in this publication at any time. For the latest details always consult your Ford Dealer. **Optional equipment.** Throughout this publication, wherever a feature is described as being an 'Option' or 'Option Fitment/Pack' etc, you should assume that it will be at extra cost to the base vehicle, unless specifically stated to the contrary. All models and colour combinations are subject to availability. **Note.** Some images portrayed are of a pre-production model and/or are computer generated, therefore, the design/features on the final version of the vehicle may differ in various respects. In addition, some of the features shown on the vehicles may be optional. **Note.** This brochure contains both original Ford accessories as well as a range of products from our suppliers. †The identified accessories are carefully selected third party supplier branded accessories which do not come with a Ford warranty but are covered by the third party supplier's own warranty, the details of which can be obtained from your Ford Dealer. **Note.** The Bluetooth<sup>®</sup> word mark and logos are owned by the Bluetooth SIG, Inc. and any use of such marks by Ford Motor Company is under licence. The iPod word mark and logos are the property of Apple Inc. Other trademarks and trade names are those of their respective owners. **Note.** Some driver assistance features and safety features described in this brochure are designed to function using sensors, whose performance may be affected under certain weather or environmental conditions.

**The Government fuel figures** do not express or imply any guarantee of the fuel consumption of any particular vehicle. The vehicles themselves have not been tested and there are inevitably differences between individual vehicles of the same model. In addition, a vehicle may incorporate particular modifications. Furthermore, the driver's style and road and traffic conditions, as well as the extent to which the vehicle has been driven and the standard of maintenance, will affect its fuel consumption. **Insurance groups** are only as recommended by the Association of British Insurers. You should always consult your insurance adviser for confirmation.



Ford and BP – working together to reduce fuel consumption and emissions.

#### Ford One Call

In the unlikely event that your Ford Dealer can't help you or if you need to speak to us directly, call 0203 564 4444

#### Ford Rental - local service nationwide

Car and Van rental from our latest model range. Contact your local Ford Dealer for more information

#### Ford Motability

Call our Ford Motability team on 0345 6040019

#### Finance

Ford Credit Customer Services 0345 712 5490  
Ford Lease Customer Services 0344 600 1405  
Calls to 0344 and 0345 numbers are charged at the same rate as a standard 01 or 02 geographic number, even when calling from a mobile.

Published by Ford Motor Company Limited,  
Brentwood, Essex, England.  
Registered in England No. 235446.

FA 1604  
PN 204888, FoE H67E.  
PN 677514/0117/16m/GBR en  
January 2017.

© Ford Motor Company Limited.

[www.ford.co.uk](http://www.ford.co.uk)