



IONIQ

Hybrid · Plug-in Hybrid · Electric





# NEW THINKING. NEW POSSIBILITIES.

---

Our philosophy is to do things differently and embrace every challenge. Right now, one of the biggest responsibilities facing every manufacturer is to move away from fossil fuels towards a more sustainable way of driving. Our vision for e-mobility is pointing us towards increasingly pioneering designs and materials, while our focus on innovation underpins our entire purpose. It's inspired us to produce low-emission vehicles such as ix35 Fuel Cell, featuring ambitious technologies that are becoming more widely used every day. It's also led us to our latest achievement — becoming the first manufacturer to produce a car that features three different electrified powertrains under the same design. This feat is only the start of our vision for the future.





The Hyundai IONIQ:  
the world's first car  
with three different  
electrified powertrains.  
The Hybrid, Plug-in  
Hybrid and Electric,  
all designed with your  
lifestyle in mind.

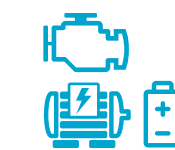






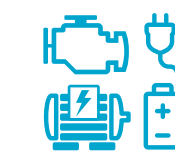
# The first car in the world to feature three electrified powertrains.

The unique choice of three electrified powertrains in one model gives the Hyundai IONIQ a very special status. As a ground-breaking achievement, the focus is on combining efficiency, low emissions and outstanding performance. From start/stop city driving to long-distance trips, the IONIQ provides the perfect option for a variety of lifestyles.



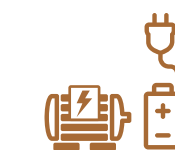
## IONIQ Hybrid

The IONIQ Hybrid's electric motor works together with the petrol engine when you pull away or come to a standstill. It smoothly improves fuel consumption and lowers emissions in start/stop city driving, while providing an extra kick of power and torque if required.



## IONIQ Plug-in Hybrid

The IONIQ Plug-in Hybrid can travel up to 39 miles on electric power, which covers most day-to-day trips. On longer trips, the electric motor works intelligently with the petrol engine to improve fuel economy and reduce CO<sub>2</sub> emissions, or offer more performance.



## IONIQ Electric

For pure, zero-emission driving, the fully electric powertrain is this model's trump card. Delivering a significant 120PS, its battery gives you over 130 miles of real-world range. Just as impressively, you can charge it to 80% in just 30 minutes.



# A pioneering design concept that combines form with function.



reddot award  
design concept

The IONIQ's streamlined exterior creates far more than a striking, coupé-style silhouette. It creates an aerodynamic form that improves every aspect of efficiency.



Sleek and attractive, the IONIQ makes a powerful first impression. However, it's the detail that's gone into its exterior that makes it a real game-changer. Whatever your perspective, the elegant lights draw the eye with their curved outline, seamlessly integrated into the car's profile. The side sill mouldings keep air close to its body, while the front wheel air curtains redirect turbulent air. The beautiful

sloping fast-back style roofline enhances the airflow even further, adding to a clean, stylish design that's built around aerodynamic performance. It's the reason that the IONIQ won the coveted 2016 Red Dot Award for outstanding design in the 'Vehicle' category. Judged by industry experts from around the world, Red Dot rewards ground-breaking innovations across a huge range of sectors.



Car shown IONIQ Electric Premium SE in Polar White solid paint.





# The IONIQ Hybrid: a driving experience with no compromises.

The IONIQ Hybrid combines technology with power to deliver a smooth driving experience. The electric motor and engine work seamlessly together to deliver plenty of torque when you need it most and maximum efficiency when cruising or at low speed.

The impressive Dual Clutch Transmission (DCT) places the IONIQ Hybrid truly at the forefront of innovation, delivering a smooth ride for a truly enjoyable driving experience. It works with one clutch operating odd-numbered gears and the other operating even-numbered gears, giving you faster responsiveness and a more dynamic overall experience. There are two driving modes to suit your style, including SPORT mode, which combines electric and

engine power resulting in more weight to the steering for a reactive and thrilling drive. ECO mode optimises fuel economy and efficiency for a different style of driving. When you're decelerating, the engine is turned off and the kinetic energy from the brakes is converted into electrical energy that's stored in the battery. Whichever option you select, you'll enjoy an experience that rivals any car in its class, not just Hybrids.



6-speed Dual Clutch Transmission



# The IONIQ Plug-in Hybrid: ultra-low emissions at your command.

The Hyundai Plug-in Hybrid combines the qualities of a conventional hybrid electric vehicle and an all-electric vehicle. Cover your daily drive with up to 39 miles of electric range and head further afield while enjoying the efficient benefits of the 1.6 GDi engine. A car to truly fit your lifestyle.

When used as a conventional hybrid electric vehicle, the HEV computer selectively operates between the engine and the electric motor – or even both at the same time – depending on the level of power required to travel. When it's operating in electric mode, the vehicle is driven only using the electric motor until the charge from the high voltage battery becomes too low, at which point it reverts to the hybrid mode automatically. Pure electric mode gives you up to 39 miles of zero tailpipe emissions, depending on your driving style and road conditions. To help maximise driving efficiency, IONIQ Plug-in Hybrid is fitted with ECO-DAS

(Eco Driving Assist System). ECO-DAS includes a unique Coasting Guide feature that analyses route information from the navigation system and gives advance notification on when to slow down – helping to minimise braking and reduce fuel consumption. The efficiency of IONIQ Plug-in Hybrid is greatly enhanced if the car is mainly driven in electric mode, this is why we strongly recommend that you install a wallbox on your driveway or garage. The high voltage battery can be fully charged by connecting the plug to an external electric power source. It takes about 2 hours 15 minutes to fully recharge the 8.56 kWh battery.



Car shown IONIQ Plug-in Hybrid Premium SE in Polar White solid paint.

Our vehicles are homologated according to the current European legislation on the basis of the New European Driving Cycle (NEDC). The results of the tests are published for comparison purposes. Real fuel consumptions, emissions and electric range will be different and will vary according to driving conditions, driving styles, types of routes and the standard of maintenance of the vehicle.





# The IONIQ Electric: zero tailpipe emissions, maximum enjoyment.

With impressive customisation on offer, the electric experience will surpass your expectations. Take it for a spin and admire its performance attributes on the open road.

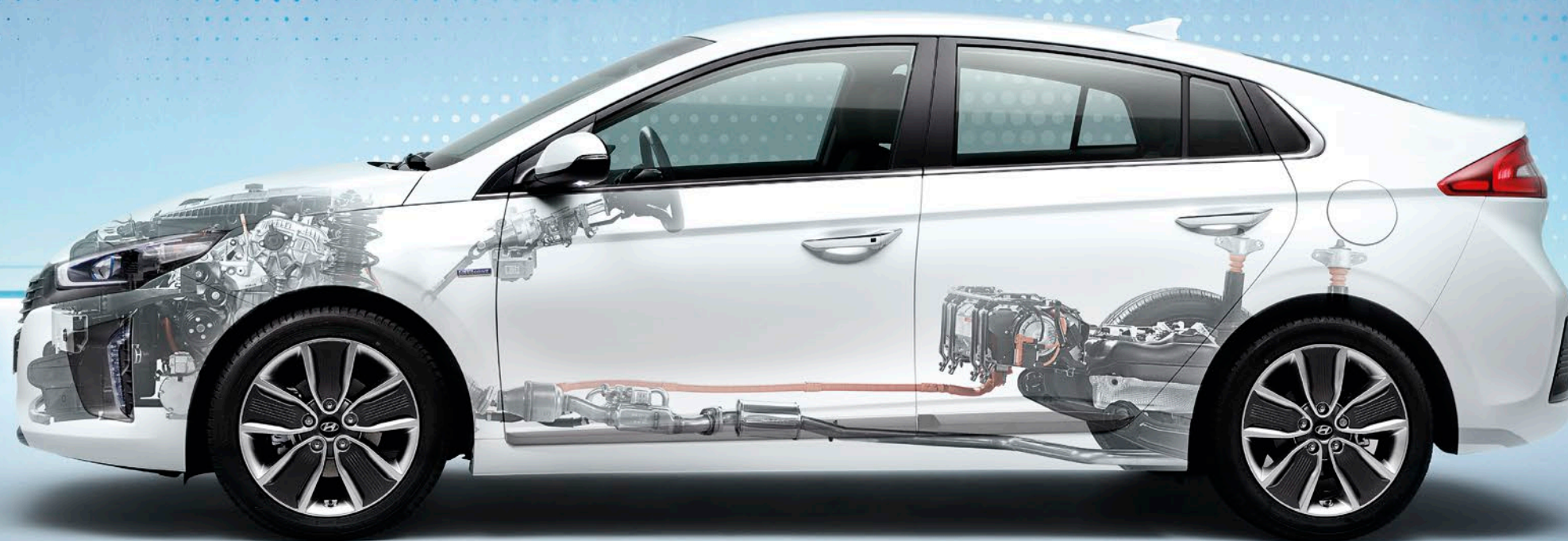
Packed with leading-edge features and options, the innovative IONIQ Electric arrives with flexible selections to suit your style. SPORT mode provides you with a significant boost by increasing your torque from 265Nm to 295Nm, delivering an extra burst of acceleration. The IONIQ Electric also utilises regenerative braking to great effect, charging your battery while you're on the move. Steering-mounted paddles allow you to adjust the regenerative braking strength. By clicking the left

hand paddle, you'll increase the regenerative braking effect to put more power in the battery while maximising efficiency. Click the right-hand paddle to decrease the regenerative braking effect for a more refined experience. Customisation of drive modes is made easy through the 8" touchscreen allowing you to adjust the maximum speed, climate control and the level of regenerative braking. With 120PS available and a real world range of more than 130 miles\*, the IONIQ Electric rises to every challenge.



# Efficient and energetic, IONIQ Hybrid arrives with power in all the right places.

Cutting-edge technology powers the IONIQ, maximising all available energy to deliver the optimum drive. Its outstanding performance is down to the ambition and ingenuity of our engineers, who have pushed the boundaries in delivering a car that excels on every level.



The epitome of forward-thinking motoring, the 1.6-litre GDI direct-injection petrol engine in the IONIQ Hybrid and Plug-in Hybrid is intelligently designed to work with the electric motor to deliver maximum power and economy. As the latest evolution of our 16-valve Kappa design, it works by keeping the intake valves open for longer than a traditional combustion engine, reducing the compression ratio in the process. This makes it more fuel efficient and works perfectly on the hybrid, where engine torque can be boosted instantly by the electric motor. We've utilised friction-reducing roller bearings, low-viscosity

oil and a cooled Exhaust Gas Recirculation (EGR) system to optimise heat recovery and produce a design that boosts thermal efficiency by 40%. By using innovative technology, such as rectangular section copper wire and internal core components that are up to 10% thinner than normal, it delivers in excess of 95% efficiency. In simple terms, it means that the energy is used almost solely to power the vehicle, rather than being lost on the way. The result is instantly available torque that creates smooth acceleration and a truly agile driving experience that surpasses other cars in its class.

Car shown IONIQ Hybrid Premium SE in Polar White solid paint.



## Start / Low Speed Electric Motor (EV mode)

IONIQ runs solely using its electric motor (zero fuel consumption).

## Acceleration / Uphill Engine + Electric Motor

The Kappa 1.6 GDI engine starts automatically to work with the electric motor providing a fuel-efficient operation.

## Driving Engine

IONIQ operates using only its engine when travelling steadily at mid-to-high speeds.

## Deceleration / Downhill Recharging

Engine is turned off and kinetic energy is captured by the brakes and converted into electrical energy, which is used to recharge the battery.

## Stop Engine Hold

When the vehicle is not in motion, both the engine and motor are stopped.

Images shown reference examples of various driving scenarios. The performance of the Hybrid System is influenced by the driving style, the state of charge of the high voltage battery, the route, the weather condition, the weight of the cargo and other external factors.





# Lightweight, aerodynamic and electrified. It's efficient in every way.

With the clever integration of an electric motor, it should be obvious that the IONIQ is built with economy in mind. However, there is so much more that adds to its efficiency, from its aerodynamic form to the lightweight materials we used. It really is all in the detail.

A sleek, smooth silhouette is more than just a design style; it's a scientifically developed form that creates an incredible drag co-efficient (Cd) of just 0.24. With cleaner airflow on every aspect, including the wheels and side sill mouldings, less power is required to propel the car forward, resulting in fewer emissions. Crucial to efficiency is the car's weight — or rather lack of it. Selected body panels, such as the bonnet

and tailgate, are made of aluminium to decrease both their own weight, and the IONIQ's overall kerb weight. The bonnet is 6.5kg (46%) lighter than its steel equivalent, while the tailgate is 6.1kg (45%) lighter. This 12.6kg saving comes with no compromise on noise or vibration. It's these small gains that contribute to the bigger picture: an extremely lightweight, efficient model in every way.



# The IONIQ's interior is designed around the philosophy of clean simplicity.

With elements that cleverly lift and highlight key features, the interior represents continuous evolution with the latest designs, showcasing an ergonomic, simple layout.

As forward-thinking as the rest of the car, its fine touches bring all the key elements to life in a fluid and elegant manner. At the heart of it all sits a D-cut steering wheel with chrome spokes that bring an air of sportiness to the design. Continuing the theme are the chrome-accented gear knob and footrests which add to its modernist luxury feel. On the IONIQ Hybrid and Plug-in Hybrid, thin blue lines feature on

the dashboard and instrument cluster, while copper-coloured accents in the IONIQ Electric bring that live-wire feel to the inside. Memory function driver's seat and heated front and rear seats arrive on top-spec models, while soft-touch materials add to the feel of premium quality that runs throughout the DNA of the interior design. It even features thicker glass to keep noise pollution down to a minimum.







8" touchscreen infotainment unit (fitted as standard on Premium and Premium SE trims). Hybrid model shown, screen layout dependent on model variant.



Infinity high-definition sound system (fitted as standard on Premium and Premium SE trims).



Wireless charging (compatible smartphone required) (fitted as standard on Premium and Premium SE trims).



USB charging port and tablet storage (fitted as standard on all trims).

# In a connected world, everything's at your fingertips.

As a contemporary car in every way, the IONIQ places connectivity right at its heart. With LIVE Services, interconnected music and a surround-sound speaker system, its abundance of technological capabilities will elevate your journey to the next level.



Designed with your lifestyle in mind, the IONIQ ensures that you can take a trip and always stay connected. When it comes to accessing your music safely and easily, you'll have an impressive level of choice on the Premium and Premium SE, thanks to Bluetooth®, Apple CarPlay™ and Android™ Auto. You can create a perfect synergy between your life on and off the road by utilising the selected apps on compatible Apple and Android phones. Bluetooth connectivity helps you stay connected with friends and family, and you don't need to worry about your battery running out on a call thanks to the wireless smartphone charging facility which is both simple to use

and extremely useful. The IONIQ's satellite-navigation system will make it hard to take a wrong turn. It comes with a 7-year free subscription to LIVE Services for up-to-the-minute weather, traffic and speed camera updates, and even specific searches to help you locate local points of interest. High-definition Clari-Fi technology restores digitally repressed sound, while there's an Infinity premium surround-sound system with eight speakers, subwoofer and external amplifier from the Premium Trim. Finally, important driving information such as charge level is displayed on a 7" TFT instrument cluster and 8" touchscreen with a pin-sharp pixel resolution.



# Its extra-sensory technologies help keep you safe.

The IONIQ's safety features befit such an advanced model. A combination of advanced technologies and preventative innovations help keep you on track.



The IONIQ arrives with 7 airbags along with a significant line-up of driver assist technologies. The Lane Departure Warning System with Lane Keep Assist will warn you if you veer out of your lane and apply corrective steering if necessary. The Autonomous Emergency Braking function helps prevent collisions with pedestrians or vehicles by emitting a visual and audible warning,

before intervening with partial or complete brake application. Rear radar sensors provide Blind Spot Detection to help you change lanes or safely reverse, while Smart Adaptive Cruise Control maintains a safe distance between you and the preceding vehicle. This cutting-edge combination of built-in radar, cameras and sensors will look out for you every step of the way.



Lane Departure Warning System with Lane Keep Assist (LKAS)\*



Autonomous Emergency Braking (AEB)\*



Smart Adaptive Cruise Control (SCC)\*



Blind Spot Detection System (BSD)\*

Cars shown IONIQ Hybrid Premium SE in Polar White solid paint and IONIQ Hybrid Premium SE in Marina Blue metallic paint.

HYUNDAI IONIQ





# Recharge at home or on the move.

With all the economic benefits that come with electric power, possibly one of the most important efficiencies is the speed and ease at which the battery charges. You'll benefit from charge scheduling, where you can choose to charge immediately or set a departure time so the IONIQ can prepare the car with maximum efficiency.



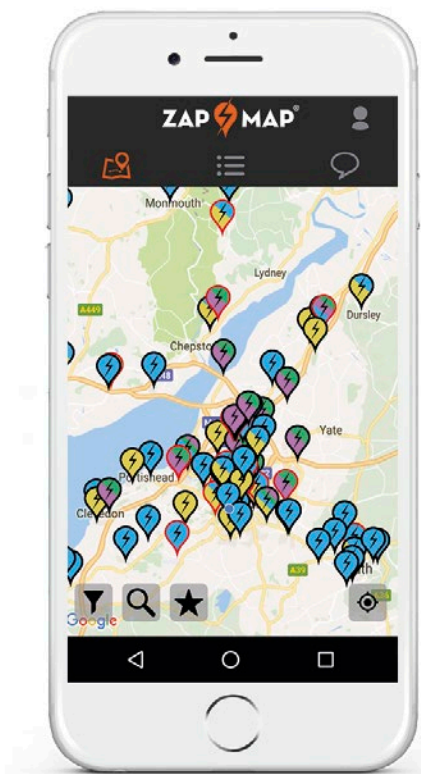
Both the IONIQ Plug-in Hybrid and IONIQ Electric are designed to impress when it comes to battery life. The Plug-in Hybrid has an on-board charger of 3.3kW and takes just 2 hours and 15 minutes to go from empty to full. The IONIQ Electric boasts a 6.6kW on-board charger that takes just 4 hours 25 minutes from empty to 100% charge using a 7kW wallbox. On the move, DC rapid chargers – available on the

Electric – will allow you to charge up to 80% in as little as 30 minutes. The inbuilt heating system improves the process, saving the high voltage charge for driving, especially in cold conditions. On both the Plug-in Hybrid and the Electric, you'll look out for three LEDs on the top of the dashboard. They gradually light up when it's successfully plugged in so you can check its charging status from outside.



# Charging to fit your lifestyle.

Make the most of your IONIQ Electric or your Plug-in Hybrid by installing a homecharger, since at least 80% of your charging will be done at home – allowing you the flexibility to go out and explore whenever you like. Not only is it safe and efficient, it's also extremely simple since we've appointed POD Point as our preferred supplier. You'll benefit from their high level of service at all times. You'll quickly find that charging your IONIQ Plug-in Hybrid or Electric will become a part of your routine, whether that's at home or out and about. When you're on the road, you'll have a huge variety of charging points at your disposal. Whether you're at the train station or taking a trip to the shops, you'll be able to recharge your car in keeping with your lifestyle. Just visit the zap-map website for a detailed look at all the charging points closest to you.



Shops



Work



Home

Learn more at:



[www.pod-point.com](http://www.pod-point.com)



[www.zap-map.com/live](http://www.zap-map.com/live)



## Charging on-the-move



### CCS Combo

(IONIQ Electric only)

**Charging speed:** Rapid  
**Connection to car:** CCS Combo  
**Output connection:** CCS Combo  
**Estimated charge times:**  
50 kW: approx. 30 minutes  
(to 80% of the charge)  
**Rating:** Varies from manufacturer to manufacturer. Not supplied by HMUK.



### 7-Pin Type 2

(IONIQ Electric and Plug-in Hybrid )

**Charging speed:** Normal  
**Connection to car:** Type 2  
**Output connection:** Type 2  
**Estimated charge times:**  
Approx. 4 hours 25 minutes  
(to fully charge, 100%)  
**Rating:** 240V/32A/7kW



### 7-Pin Type 2

(IONIQ Electric and Plug-in Hybrid )

**Charging speed:** Normal  
**Connection to car:** Type 2  
**Output connection:** Type 2  
**Estimated charge times:**  
Approx. 4 hours 25 minutes  
(to fully charge, 100%)  
**Rating:** 240V/32A/7kW



### In-Car Control Box (ICCB)

(IONIQ Electric and Plug-in Hybrid )

**Charging speed:** Trickle / Slow  
**Connection to car:** Type 2  
**Output connection:** 3 Pin Plug  
**Estimated charge times:**  
Approx. 12 hours  
(to fully charge, 100%)  
**Rating:** 230V/10A/2.3kW

Please note that the IONIQ Electric 6.6 kW on Board charger (OBC) will impose the following maximum rating: 230V/28A/6.6kW and the IONIQ Plug-in Hybrid OBC will impose the following maximum rating: 230V/14A/3.3kW





Hybrid SE OFFERS THE FOLLOWING FEATURES AS STANDARD:

- 15" Alloy Wheels with Aerodynamic Wheel Trims
- Air Conditioning – Dual Zone Climate Control
- Automatic Headlights with Dusk Sensor
- Autonomous Emergency Braking (AEB)
- Bluetooth® Connectivity
- Cruise Control – Smart Adaptive Speed Control
- Driver's Seat – Lumbar Support (Electric)
- Driver's Supervision Instrument Cluster with TFT Display (4.2")
- Hill-start Assist Control (HAC)
- Lane Departure Warning System with Lane Keep Assist (LKAS)
- Leather Wrapped Steering Wheel
- Parking Sensors – Rear
- Parking System – Rear Camera and Guidance System
- Radio, RDS, DAB
- Seat Trim – Cloth
- Spare Wheel – Emergency Space Saver (steel)
- Speakers – 2 Tweeters, 2 Front, 2 Rear
- Touchscreen Media Centre (5")
- Tyre Pressure Monitoring System (TPMS) with Individual Tyre Pressure Display
- USB and Aux Connections – Front

Hybrid Premium OFFERS THE FOLLOWING FEATURES OVER HYBRID SE:

- Automatic Dimming Rear View Mirror
- Door Mirror Puddle Lights
- Door Mirrors – Power Folding
- Driver's Seat – Heated
- Driver's Supervision Instrument Cluster with TFT Display (7")
- Front Passenger's Seat – Heated
- Headlights – Bi-Xenon
- Phone Connection – Android™ Auto
- Phone Connection – Apple CarPlay™
- Smart Key – Keyless Entry with Engine Start/Stop Button
- Speakers – Upgraded Infinity Sound System: 1 Centre, 2 Tweeters, 2 Front, 2 Rear, 1 Subwoofer and 1 Ext Amp
- Steering Wheel – Heated
- Touchscreen Satellite Navigation (8") including Traffic Messaging Channel, MapCare and LIVE Services
- USB – Driver's Arm Rest (charging only)
- Wireless Phone Charging Pad





17" alloy wheels optional

Hybrid Premium SE OFFERS THE FOLLOWING FEATURES OVER HYBRID PREMIUM:

- Alloy Pedals
- Automatic De-fog System for Front Windscreen
- Automatic Windscreen Wipers with Rain Sensor
- Blind Spot Detection System (BSD)
- Driver's Seat - Electric Adjustments
- Driver's Seat - Memory Function
- Driver's Seat - Ventilated
- Front Passenger's Seat - Ventilated
- Parking Sensors - Front and Rear
- Rear Cross Traffic Alert (RCTA)
- Rear Seats (Outer) - Heated
- Seat Trim - Leather (Seat Facings only)





Plug-in Hybrid Premium OFFERS THE FOLLOWING FEATURES AS STANDARD:

- 16" Alloy Wheels\*
- Air Conditioning - Dual Zone Climate Control
- Automatic Headlights with Dusk Sensor
- Autonomous Emergency Braking (AEB)
- Bluetooth® Connectivity
- Charging Cable - Emergency 3 Pin Connector (ICCB)
- Charging Cable - 7 Pin Type 2
- Cruise Control - Smart Adaptive Speed Control
- Driver's Seat - Heated
- Driver's Seat - Lumbar Support (Electric)
- Driver's Supervision Instrument Cluster with TFT Display (7")
- Front Passenger's Seat - Heated
- Headlights - LED
- Hill-start Assist Control (HAC)
- Lane Departure Warning System with Lane Keep Assist (LKAS)
- Leather Wrapped Steering Wheel
- Parking Sensors - Rear
- Parking System - Rear Camera and Guidance System
- Phone Connection - Android™ Auto
- Phone Connection - Apple CarPlay™
- Radio, RDS, DAB
- Paddle Shift Gear Change
- Seat Trim - Cloth
- Smart Key - Keyless Entry with Engine Start/Stop Button
- Speakers - Upgraded Infinity Sound System: 1 Centre, 2 Tweeters, 2 Front, 2 Rear, 1 Subwoofer and 1 Ext Amp
- Steering Wheel - Heated
- Touchscreen Satellite Navigation (8") including Traffic Messaging Channel, MapCare and LIVE Services
- Tyre Pressure Monitoring System (TPMS) with Individual Tyre Pressure Display
- USB and Aux Connections - Front
- Wireless Phone Charging Pad

Plug-in Hybrid Premium SE OFFERS THE FOLLOWING FEATURES OVER PLUG-IN HYBRID PREMIUM:

- Alloy Pedals
- Automatic De-fog System for Front Windscreen
- Automatic Windscreen Wipers with Rain Sensor
- Blind Spot Detection System (BSD)
- Driver's Seat - Electric Adjustments
- Driver's Seat - Memory Function
- Driver's Seat - Ventilated
- Front Passenger's Seat - Ventilated
- Parking Sensors - Front and Rear
- Rear Cross Traffic Alert (RCTA)
- Rear Seats (Outer) - Heated
- Seat Trim - Leather (Seat Facings only)





Electric Premium OFFERS THE FOLLOWING FEATURES AS STANDARD:

- 16" Alloy Wheels\*
- Air Conditioning - Single Zone Climate Control
- Automatic Headlights with Dusk Sensor
- Automatic Windscreen Wipers with Rain Sensor
- Autonomous Emergency Braking (AEB)
- Bluetooth® Connectivity
- CCS Combo Rapid Charge Port (50kW)
- Charging Cable – 7 Pin Type 2
- Charging Cable – Emergency 3 Pin Connector (ICCB)
- Cruise Control – Smart Adaptive Speed Control with Stop and Go Function
- Driver's Seat – Heated
- Driver's Seat – Lumbar Support (Electric)
- Driver's Supervision Instrument Cluster with TFT Display (7")
- Front Passenger's Seat – Heated
- Headlights – LED
- Hill-start Assist Control (HAC)
- Lane Departure Warning System with Lane Keep Assist (LKAS)
- Leather Wrapped Steering Wheel
- Parking Sensors – Rear
- Parking System – Rear Camera and Guidance System
- Phone Connection – Android™ Auto
- Phone Connection – Apple CarPlay™
- Radio, RDS, DAB
- Regenerative Brake Shift Paddles
- Seat Trim – Cloth
- Smart Key – Keyless Entry with Engine Start/Stop Button
- Speakers – Upgraded Infinity Sound System: 1 Centre, 2 Tweeters, 2 Front, 2 Rear, 1 Subwoofer and 1 Ext Amp
- Steering Wheel – Heated
- Touchscreen Satellite Navigation (8") including Traffic Messaging Channel, MapCare and LIVE Services
- Tyre Pressure Monitoring System (TPMS) with Individual Tyre Pressure Display
- USB and Aux Connections – Front
- Wireless Phone Charging Pad

Electric Premium SE OFFERS THE FOLLOWING FEATURES OVER ELECTRIC PREMIUM:

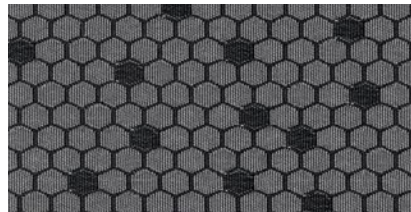
- Alloy Pedals
- Blind Spot Detection System (BSD)
- Driver's Seat – Electric Adjustments
- Driver's Seat – Memory Function
- Driver's Seat – Ventilated
- Front Passenger's Seat – Ventilated
- Parking Sensors – Front and Rear
- Rear Cross Traffic Alert (RCTA)
- Rear Seats (Outer) – Heated
- Seat Trim – Leather (Seat Facings only)



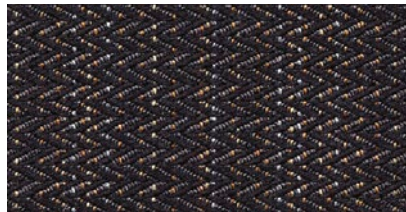
Blue trim  
IONIQ Hybrid and Plug-in Hybrid



Leather trim with Blue stitching features on Premium SE



Plug-in Hybrid Cloth trim on Premium

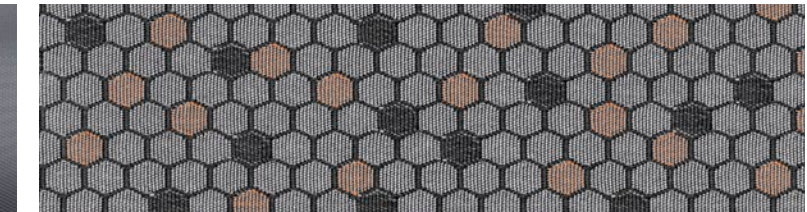


Hybrid Cloth trim on SE and Premium

Copper trim  
IONIQ Electric



Electric Leather trim with Copper stitching on Premium SE



Electric Cloth trim on Premium





Polar White - Solid\*



Platinum Silver - Metallic



Phoenix Orange - Metallic



Blazing Yellow - Metallic (available on Electric only)



Iron Grey - Metallic (available on Hybrid and Plug-in Hybrid only)



Phantom Black - Pearl



Marina Blue - Metallic



Demitasse Brown - Metallic (available on Hybrid and Plug-in Hybrid only)

\* All IONIQ Plug-In Hybrid and Electric models are supplied with the above featured 16" grey alloy wheels with the exception of vehicles selected in Polar White which feature 16" white alloy wheels. Design is subject to powertrain.



	Hybrid			Plug- in Hybrid		Electric	
	SE	Premium	Premium SE	Premium	Premium SE	Premium	Premium SE
ENGINE & TRANSMISSION							
Hybrid 1.6 GDi engine + 32kW Electric Motor - 6 Speed Dual Clutch Transmission (141PS)	●	●	●	-	-	-	-
Hybrid 1.6 GDi engine + 44.5kW Electric Motor - 6 Speed Dual Clutch Transmission (141PS)	-	-	-	●	●	-	-
Electric 28kWh Battery + 88kW Electric Motor - Single Speed Reduction Gear (120PS)	-	-	-	-	-	●	●
EXTERIOR							
15" Alloy Wheels with Aerodynamic Wheel Trims	●	●	●	-	-	-	-
16" Alloy Wheels	-	-	-	●	●	●	●
17" Alloy Wheels	-	-	○	-	-	-	-
Bumper Accents*	●	●	●	●	●	●	●
Door Mirrors - Body Coloured	●	●	●	●	●	●	●
Exterior Door Handles - Body Coloured	●	-	-	-	-	-	-
Exterior Door Handles - Body Coloured with Chrome Insert	-	●	●	●	●	●	●
Radiator Grille - Active Air Flap	●	●	●	●	●	-	-
Radiator Grille - Gloss Black with Chrome Inserts*	●	●	●	●	●	-	-
Radiator Grille - True Grey Dedicated Grille*	-	-	-	-	-	●	●
Rear Bumper - Two-Tone*	●	●	●	●	●	●	●
Rear Spoiler with Integrated LED Brake Light	●	●	●	●	●	●	●
Side Body Moulding	●	●	●	●	●	●	●
Window Surround - Black	●	-	-	-	-	-	-
Window Surround - Chrome Finish	-	●	●	●	●	●	●
INTERIOR							
Alloy Pedals	-	-	●	-	●	-	●
Door Scuff - Standard Plate	●	-	-	-	-	-	-
Door Scuff - Chrome with IONIQ logo	-	●	●	●	●	●	●
Interior Colour-coded Seat and Trim Accents*	●	●	●	●	●	●	●

	Hybrid			Plug- in Hybrid		Electric	
	SE	Premium	Premium SE	Premium	Premium SE	Premium	Premium SE
Interior Door Handles - Black	●	-	-	-	-	-	-
Interior Door Handles - Chrome Effect	-	●	●	●	●	●	●
Leather Wrapped Steering Wheel	●	●	●	●	●	●	●
SEATING							
Driver's Seat - Heated	-	●	●	●	●	●	●
Driver's Seat - Ventilated	-	-	●	-	●	-	●
Driver's Seat - Electric Adjustments	-	-	●	-	●	-	●
Driver's Seat - Height Adjustment (Manual)	●	●	-	●	-	●	-
Driver's Seat - Lumbar Support (Electric)	●	●	●	●	●	●	●
Driver's Seat - Memory Function	-	-	●	-	●	-	●
Front Passenger's Seat - Heated	-	●	●	●	●	●	●
Front Passenger's Seat - Ventilated	-	-	●	-	●	-	●
Front Passenger's Seat Height Adjustment (Manual)	●	●	●	●	●	●	●
Head Restraints - Vertical and Horizontal Adjustment (Front)	●	●	●	●	●	●	●
Head Restraints - Vertical Adjustment (Rear)	●	●	●	●	●	●	●
Rear Seats - Split Folding 60/40	●	●	●	●	●	●	●
Rear Seats (Outer) - Heated	-	-	●	-	●	-	●
Seat Trim - Cloth	●	●	-	●	-	●	-
Seat Trim - Leather - Seat Facings Only	-	-	●	-	●	-	●
VENTILATION & VISIBILITY							
Air Conditioning - Driver-only Mode	●	●	●	●	●	●	●
Air Conditioning - Dual Zone Climate Control	●	●	●	●	●	-	-
Air Conditioning - Single Zone Climate Control	-	-	-	-	-	●	●
Automatic De-Fog System for Front Windscreen	-	-	●	-	●	●	●
Automatic-Dimming Rear View Mirror	-	●	●	●	●	●	●

	Hybrid			Plug- in Hybrid		Electric	
	SE	Premium	Premium SE	Premium	Premium SE	Premium	Premium SE
Automatic Headlights with Dusk Sensor	●	●	●	●	●	●	●
Automatic Windscreen Wipers with Rain Sensor	-	-	●	-	●	●	●
Daytime Running Lights - LED	●	●	●	●	●	●	●
Door Mirrors Puddle Lights	-	●	●	●	●	●	●
Fog Lights - LED Rear	●	●	●	●	●	●	●
Headlights - Bi-Xenon	-	●	●	-	-	-	-
Headlights - Halogen	●	-	-	-	-	-	-
Headlights - LED	-	-	-	●	●	●	●
Indicator Lights - Door Mirror (LED)	●	●	●	●	●	●	●
Interior Light - Centre	●	●	●	●	●	●	●
Interior Light - Luggage Compartment	●	●	●	●	●	●	●
Interior Light - Map-Reading Light	●	●	●	●	●	●	●
Positioning Lights - LED	-	●	●	●	●	●	●
Rear Air Vents - Centre Console	-	●	●	●	●	●	●
Rear Light - LED	-	●	●	●	●	●	●
Rear Windscreen - Heated	●	●	●	●	●	●	●
Solar Glass with Windscreen Shade Band	●	●	●	●	●	●	●
CHARGING							
CCS Combo Rapid Charge Port (50kW)	-	-	-	-	-	●	●
Charging Cable - Emergency 3 Pin Connector (ICCB)	-	-	-	●	●	●	●
Charging Cable - 7 Pin Type 2	-	-	-	●	●	●	●
POD Point 7kW Home Charger	-	-	-	○	○	○	○
CONVENIENCE							
12V Power Outlet	●	●	●	●	●	●	●
Arm Rest - Front with Storage	●	●	●	●	●	●	●

	Hybrid			Plug- in Hybrid		Electric	
	SE	Premium	Premium SE	Premium	Premium SE	Premium	Premium SE
Centre Console - Tablet Storage	●	●	●	●	●	●	●
Cruise Control - Smart Adaptive Speed Control	●	●	●	●	●	-	-
Cruise Control - Smart Adaptive Speed Control with Stop and Go Function	-	-	-	-	-	●	●
Cup Holders - Front	●	●	●	●	●	●	●
Door Mirrors - Electric Adjustment and Heated	●	●	●	●	●	●	●
Door Mirrors - Power Folding	-	●	●	●	●	●	●
Drive Mode Selector - Button	-	-	-	-	-	●	●
Drive Mode Selector - Gear Lever	●	●	●	●	●	-	-
Electric Power Steering with Variable Drive Modes	●	●	●	●	●	●	●
Electric Windows - Front and Rear	●	●	●	●	●	●	●
Electric Windows - Front with Anti-trap and One-touch Controls	●	●	●	●	●	●	●
Front Seat Back Pockets - Driver's Seat	●	●	●	●	●	●	●
Front Seat Back Pockets - Passenger's Seat	●	●	●	●	●	●	●
Luggage Net	●	●	●	●	●	●	●
Paddle Shift Gear Change	-	-	-	●	●	-	-
Parking Brake - Electric with Auto Hold Function (Electric Only)	-	-	-	-	-	●	●
Parking Brake - Foot Brake	●	●	●	●	●	-	-
Parking Sensors - Front and Rear	-	-	●	-	●	-	●
Parking Sensors - Rear	●	●	-	●	-	●	-
Parking System - Rear Camera and Guidance System	●	●	●	●	●	●	●
Regenerative Brake Shift Paddles	-	-	-	-	-	●	●
Smart Key - Keyless Entry with Engine Start/ Stop Button	-	●	●	●	●	●	●
Spare Wheel - Emergency Space Saver (Steel)	●	●	●	-	-	-	-
Steering Wheel - Heated	-	●	●	●	●	●	●
Sun Visors - with Driver and Passenger Illuminated Vanity Mirrors	●	●	●	●	●	●	●



	Hybrid			Plug- in Hybrid		Electric	
	SE	Premium	Premium SE	Premium	Premium SE	Premium	Premium SE
Sunglasses Holder	•	•	•	•	•	•	•
Tyre Repair Kit	-	-	-	•	•	•	•
Windscreen Washer Fluid Sensor and Warning Indicator	•	•	•	•	•	•	•
TECHNOLOGY & ENTERTAINMENT							
Bluetooth® Connectivity†	•	•	•	•	•	•	•
Driver's Supervision Instrument Cluster with TFT Display (4.2")	•	-	-	-	-	-	-
Driver's Supervision Instrument Cluster with TFT Display (7")	-	•	•	•	•	•	•
Eco Driving Assistant System (ECO DAS)	-	-	-	•	•	-	-
Phone Connection - Android™ Auto	-	•	•	•	•	•	•
Phone Connection - Apple CarPlay™	-	•	•	•	•	•	•
Radio, RDS, DAB	•	•	•	•	•	•	•
Speakers - 2 Tweeters, 2 Front, 2 Rear	•	-	-	-	-	-	-
Speakers - Upgraded Infinity Sound System - 1 Centre, 2 Tweeters, 2 Front, 2 Rear, 1 Subwoofer and 1 Ext. Amp	-	•	•	•	•	•	•
Steering Wheel Audio, Phone and Cruise Controls	•	•	•	•	•	•	•
Touchscreen Media Centre (5")	•	-	-	-	-	-	-
Touchscreen Satellite Navigation (8") including Traffic Messaging Channel, MapCare and LIVE Services‡	-	•	•	•	•	•	•
USB - Driver's Arm Rest (Charging Only)	-	•	•	•	•	•	•
USB and Aux Connections - Front	•	•	•	•	•	•	•
Wireless Phone Charging Pad	-	•	•	•	•	•	•
SAFETY & SECURITY							
Airbag - Front Passenger De-activation Switch	•	•	•	•	•	•	•
Airbags - Front, Front Side, Curtain and Driver's Knee	•	•	•	•	•	•	•
Anti-Lock Brake System (ABS)	•	•	•	•	•	•	•
Autonomous Emergency Braking (AEB)	•	•	•	•	•	•	•
Blind Spot Detection System (BSD)	-	-	•	-	•	-	•
Central Locking - Remote Control	•	•	•	•	•	•	•
Deadlocking	•	•	•	•	•	•	•
Electronic Stability Control (ESC)	•	•	•	•	•	•	•
Hill-start Assist Control (HAC)	•	•	•	•	•	•	•

	Hybrid			Plug- in Hybrid		Electric	
	SE	Premium	Premium SE	Premium	Premium SE	Premium	Premium SE
Lane Departure Warning System with Lane Keep Assist (LKAS)	•	•	•	•	•	•	•
Rear Cross Traffic Alert (RCTA)	-	-	•	-	•	-	•
Tyre Pressure Monitoring System (TPMS) with Individual Tyre Pressure Display	•	•	•	•	•	•	•
CUSTOMER OPTIONS							
17" Alloy Wheels	-	-	◊	-	-	-	-
Hyundai Sense Service Plans**	◊	◊	◊	◊	◊	◊	◊
Metallic/Pearl Paint	◊	◊	◊	◊	◊	◊	◊
POD Point 7kW Home Charger	-	-	-	◊	◊	◊	◊
WARRANTY††							
100% MapCare Programme - 10 years of Map Updates	-	•	•	•	•	•	•
12 Years' Anti-Perforation Warranty	•	•	•	•	•	•	•
Five Year Annual Vehicle Health Checks Five Year Roadside Assistance Five Year Unlimited Mileage Warranty	•	•	•	•	•	•	•
IONIQ High Voltage Battery Warranty – 8 years, 125,000 miles	•	•	•	•	•	•	•

- Standard

◊ Optional at extra cost
- Specification colour dependent on powertrain/exterior colour combination, please contact your local dealer for more information.
- † Please contact your dealer for the latest list of compatible phones.
- ‡ LIVE Services includes a 7 year subscription. A compatible smartphone with data plan required to activate services. Please contact your dealer for full details.
- \*\* Hyundai Sense Service Plan full terms and conditions apply. Please see [www.hyundai.co.uk/hyundai-sense](http://www.hyundai.co.uk/hyundai-sense) or ask your local dealer for full terms and conditions.
- †† 5 Year Unlimited Mileage Warranty terms and exclusions apply. Please see [www.hyundai.co.uk](http://www.hyundai.co.uk) or ask your local dealer for full terms and exclusions.
- Apple CarPlay™ is a trademark of Apple, Inc. Android™ is a trademark of Google, Inc. Infinity® is a registered trademark of Harman International Industries, Inc. The Bluetooth® word mark and logos are registered trademarks owned by the Bluetooth SIG, Inc. and any use of such marks by Hyundai Motor UK Ltd is under license. Other trademarks and trade names are those of their respective owners.

	Hybrid (SE, Premium & Premium SE - 15" Wheels)	Hybrid (Premium SE with Optional 17" Wheels)	Plug-in Hybrid (Premium & Premium SE 16" Wheels)	Electric (Premium & Premium SE 16" Wheels)
	1.6 Petrol 141PS 6 Steed DCT	1.6 Petrol 141PS 6 Speed DCT	1.6 Petrol 141PS 6 Speed DCT	Electric Motor Single Speed Reduction Gear
HYBRID SYSTEM				
Max Hybrid System Output (PS/kW)	141 / 104 @ 5,700	141 / 104 @ 5,700	141 / 104 @ 5,700	-
Max Hybrid System Output (Nm/lbs ft)	265 / 195 @ 4,000	265 / 195 @ 4,000	265 / 185 @ 4,000	-
0-62mph (seconds)	10.8	11.1	10.6	-
Top speed (mph)	115	115	110	-
ENGINE				
Euro Status	EURO VI	EURO VI	EURO VI	-
Type	4 Cylinder DOHC - 16 valve	4 Cylinder DOHC - 16 valve	4 Cylinder DOHC - 16 valve	-
Displacement (cc)	1,580	1,580	1,580	-
Bore & stroke (mm)	72 x 97	72 x 97	72 x 97	-
Compression ratio	13:1	13:1	13:1	-
Max power (kW/PS)	105/77.2kW @ 5,700	105/77.2kW @ 5,700	105/77.2kW @ 5,700	-
Torque (Nm/lbs ft)	147/108 @ 4,000rpm	147/108 @ 4,000rpm	147/108 @ 4,000rpm	-
ELECTRIC MOTOR				
Electric Motor Type	Permanent Magnet Synchronous Motor (PMSM)	Permanent Magnet Synchronous Motor (PMSM)	Permanent Magnet Synchronous Motor (PMSM)	Permanent Magnet Synchronous Motor (PMSM)
Electric Motor Max power (kW/PS)	43.5 / 32	43.5 / 32	60.5 / 44.5	120 / 88
Electric Motor Torque (Nm/lbs ft)	170 / 125	170 / 125	170 / 125	295 / 218
0-62mph (seconds)	-	-	-	9.9 (Sport mode) / 10.2 (Normal mode)
Top speed (mph)	-	-	-	103
HIGH VOLTAGE BATTERY				
Battery Type	Lithium-ion Polymer	Lithium-ion Polymer	Lithium-ion Polymer	Lithium-ion Polymer
Battery Power (kW)	42	42	59	98
Battery Capacity (kWh/Ah)	1.56 / 6.5	1.56 / 6.5	8.9 / 25	28 / 78
Voltage	240	240	360	360
CHARGING				
Charging Port	-	-	Type 2	CCS Combo / Type 2
Estimated Charging Emergency 3 Pin Connector (ICCB) (95%)*	-	-	5 to 6 hours	12 hours
Estimated Charging POD Point Wallbox 7kW (100%)*	-	-	2 hours 15 minutes	4 Hours 25 minutes
Estimated Public 50kW CCS (80%)*	-	-	N/A	23 - 30 minutes



	Hybrid (SE, Premium & Premium SE - 15" Wheels)	Hybrid (Premium SE with Optional 17" Wheels)	Plug-in Hybrid (Premium & Premium SE 16" Wheels)	Electric (Premium & Premium SE 16" Wheels)
	1.6 Petrol 141PS 6 Speed DCT	1.6 Petrol 141PS 6 Speed DCT	1.6 Petrol 141PS 6 Speed DCT	Electric Motor Single Speed Reduction Gear
On Board Charger	-	-	3.3 kW	6.6 kW
SUSPENSION				
Front / Rear	MacPherson Strut / Multi-link	MacPherson Strut / Multi-link	MacPherson Strut / Multi-link	MacPherson Strut / Torsion Beam Type
STEERING				
System	Rack and Pinion Motor Driven Power Steering (C-MDPS)	Rack and Pinion Motor Driven Power Steering (C-MDPS)	Rack and Pinion Motor Driven Power Steering (C-MDPS)	Rack and Pinion Motor Driven Power Steering (C-MDPS)
Steering wheel lock to lock turns	2.66	2.66	2.66	2.66
Turning circle (metres)	10.6	10.6	10.6	10.6
BRAKES				
System	ABS System with Regenerative Brakes	ABS System with Regenerative Brakes	ABS System with Regenerative Brakes	ABS System with Regenerative Brakes
Front / Rear	15" Disc / 14" Disc	15" Disc / 14" Disc	15" Disc / 15" Disc	15" Disc / 15" Disc
TYRES				
SE	195 / 65 R15	-	-	-
Premium and Premium SE	195 / 65 R15	-	205 / 55 R16	205 / 55 R16
Premium SE (with Optional 17" wheels)	-	225 / 45 R17	-	-
WHEELS				
SE	6.0J X15 (alloy)	-	-	-
Premium	6.0J X15 (alloy)	-	6.0J X16 (alloy)	6.5J X16 (alloy)
Premium SE	6.0J X15 (alloy)	-	6.0J X16 (alloy)	6.5J X16 (alloy)
Premium SE (with Optional 17" wheels)	-	7.0J X17 (alloy)	-	-
DIMENSIONS				
Overall length (mm)	4,470	4,470	4,470	4,470
Overall width (mm) (Excluding Door Mirrors)	1,820	1,820	1,820	1,820
Overall height (mm)	1,450	1,450	1,450	1,450
Wheelbase (mm)	2,700	2,700	2,700	2,700
Track - front / Track - rear (mm)	1,563 / 1,577	1,549 / 1,563	1,555 / 1,569	1,555 / 1,564
WEIGHTS & CAPACITIES				
Luggage capacity VDA (litres) - seats up (Up to Load Cover)	443	443	341	350
Luggage capacity VDA (litres) - seats up (Up to Roof)	550	550	446	455
Luggage capacity VDA (litres) - seats down	1,505	1,505	1,401	1,410
Kerb Weight Lightest (kg) <sup>†</sup>	1,370	1,370	1,495	1,420

	Hybrid (SE, Premium & Premium SE - 15" Wheels)	Hybrid (Premium SE with Optional 17" Wheels)	Plug-in Hybrid (Premium & Premium SE 16" Wheels)	Electric (Premium & Premium SE 16" Wheels)
	1.6 Petrol 141PS 6 Speed DCT	1.6 Petrol 141PS 6 Speed DCT	1.6 Petrol 141PS 6 Speed DCT	Electric Motor Single Speed Reduction Gear
Kerb Weight Heaviest (kg) <sup>†</sup>	1,477	1,477	1,550	1,475
Payload (kg) <sup>‡</sup>	393 - 500	393 - 500	420 - 475	405 - 460
Gross vehicle weight (kg) <sup>***</sup>	1,870	1,870	1,970	1,880
Max tow weight (kg) Braked / Unbraked	Not Homologated	Not Homologated	Not Homologated	Not Homologated
Gross train weight (kg) <sup>††</sup>	Not Homologated	Not Homologated	Not Homologated	Not Homologated
Max roof weight (kg)	Not Homologated	Not Homologated	Not Homologated	Not Homologated
Fuel tank capacity (litres)	45	45	43	N/A
FUEL CONSUMPTION & EMISSIONS				
Urban mpg (l/100km) <sup>‡‡</sup>	83.1 (3.4)	72.7 (3.88)	0.0	N/A
Extra urban mpg (l/100km) <sup>‡‡</sup>	78.5 (3.6)	71.9 (3.92)	70.6 (4.00)	N/A
Combined mpg (l/100km) <sup>‡‡</sup>	83.1 (3.4)	70.6 (4.0)	256.80 (1.1)	N/A
Max. range based on fuel (Miles/km)	N/A	N/A	663 (1.067)	N/A
CO <sub>2</sub> Emissions (g/km) <sup>***</sup>	79	92	26	0
RANGE & EMISSIONS				
Maximum Potential EV Driving Range (Miles/Km) <sup>†††</sup>	-	-	39 / 63	174 / 280
Estimated Real EV Driving Range (Miles/Km) <sup>†††</sup>	-	-	30	130 / 209
Electric Driving Efficiency (kWh per 100km) <sup>†††</sup>	-	-	9.4	11.5

\* Charging times for the high voltage battery may vary as it is dependent on the condition of the high voltage battery, charger specifications and ambient temperature.

† Kerb Weight defined as the total weight of a vehicle with standard equipment (the minimum figure and factory fitted optional equipment (the maximum figure) and all necessary operating consumables such as oils, coolant, air conditioning refrigerant and a full tank of fuel, while not loaded with either driver, passengers or cargo.

‡ Payload is the difference between the Gross Vehicle Weight and the Kerb Weight.

\*\* Gross Vehicle Weight is the maximum allowable weight of the vehicle, fully loaded with passengers and cargo (The Payload) and includes the weight of the vehicle.

†† The Gross Train Weight is the weight of the fully loaded vehicle plus a fully loaded trailer and must not be exceeded.

‡‡ Our vehicles are homologated according to the current European legislation on the basis of the New European Driving Cycle (NEDC). The results of the tests are published for comparison purposes. Real fuel consumptions, emissions and electric range will be different and will vary according to driving conditions, driving styles, types of routes and the standard of maintenance of the vehicle.

\*\*\* g/km = grams of emitted substance per kilometre travelled. CO<sub>2</sub> = Carbon Dioxide.

††† Range is dependent on ambient temperate, battery state of charge and condition, driving style, vehicle payload, vehicle electronics and heating and climate settings. IONIQ Plug-in Hybrid CO<sub>2</sub> emissions and electric driving efficiency are combined weighted figures.

IONIQ DIMENSIONS







# Hyundai Finance

Hyundai Finance provides a range of products to make the purchase of your Hyundai even more accessible. To meet your requirements, our plans are simple but offer you the same quality and flexibility as your new Hyundai. Applying for a finance plan through your local Hyundai dealer is easy and they will support you in choosing the right plan for your needs.

As a customer your satisfaction is at the heart of our business, and whilst you are able to manage your account online, we are only a phone call away should you require any help or assistance. We offer two main products to assist your car purchase:

### CONDITIONAL SALE

Conditional Sale is a simple and traditional way to finance your car over a fixed period. You decide to fund the entire purchase price or put down a deposit and as your interest rate is fixed you'll pay the same amount each month. After all repayments have been made you'll own the car.

### PERSONAL CONTRACT PURCHASE (PCP)

Personal Contract Purchase could make it easier for you to get behind the wheel of your Hyundai, it may also help you to change your car on a more regular basis.

The way it works is simple, you decide what level of deposit to pay. From nil, up to a maximum of 50%. You also decide your repayment period (typically 25, 37 or 49 months) and set your anticipated annual mileage. This will determine your optional final payment.

You will then make fixed monthly repayments based on the outstanding balance and interest, less your optional final payment, and at the end of your monthly repayment period you will have three choices: return, retain or renew.

**RETURN:** you can hand the car back to us, with nothing further to pay (subject to fair wear and tear, and/or excess mileage charges may apply).

**RETAIN:** you can pay the optional final payment and the car is yours.

**RENEW:** you can part exchange the car, using any equity over and above the optional final payment as deposit on your next car (equity is anticipated, but this cannot be guaranteed).

T&Cs apply. Subject to status. Applicants must be 18 or over. Guarantee/Indemnity may be required.  
Hyundai Finance, RH1 1SR



# 5 Year Unlimited Mileage Warranty

The passion and belief we have in the quality of our products mean we can offer an aftercare package to match. Visit your local Hyundai Authorised Repairer and we'll attend to you straight away, giving you a fully-inclusive quote for the work you've requested.

Only Hyundai Trained Technicians will carry out this work, and we'll also check for any software updates to keep your car running smoothly. You can also be sure that we'll only use Hyundai Genuine Parts which have been thoroughly tested and approved. On collection, we'll explain your invoice and call you within 3 days of your appointment to check you're completely satisfied.

As the people who know your car best, the quality of our service is second to none.

### 5 YEAR UNLIMITED MILEAGE WARRANTY

A manufacturer backed, unlimited mileage, 5 Year Warranty\* protects your Hyundai against manufacturing defects\*\* and is fully transferable to the next owner.

### 5 YEAR ROADSIDE ASSISTANCE

24 hour roadside assistance should you ever need it, anywhere in the UK or Channel Islands.

### 5 YEAR ANNUAL VEHICLE HEALTH CHECKS

A free, expert visual inspection by your Hyundai dealer on key areas of your car, to help sort any problems and ensure trouble-free motoring.

### ADDITIONAL AFTERCARE

A 12 year Anti-perforation warranty against perforation of the bodywork, from the inside of the panel outwards.

### 8 YEAR BATTERY WARRANTY

The high voltage battery on the IONIQ carries an 8 year 125,000 mile warranty from date of registration.

The warranty covers any manufacturing defects on the battery, including degradation of the battery's state of health of 70% and below. It'll give you peace of mind long into the future.

\* Hyundai 5 Year Warranty subject to Terms and Conditions see website Hyundai.co.uk.

\*\* Vehicles used for taxi or private hire are covered by a 5 year, 100,000 mile warranty. Cover excludes fair wear and tear.





## Ownership

We're always thinking about how to make owning a Hyundai an enjoyable experience and that's exactly what you get with a Hyundai Fixed Price Service Plan. As a valued customer, we'll take care of all your Hyundai's scheduled servicing for up to 5 years or 50,000 miles.

Being covered by a Hyundai Fixed Price Service Plan means:

- Your Hyundai's servicing is covered in a single payment that can be included in your finance agreement
- You have a choice to cover your servicing for 3 or 5 years\*
- Only trained Technicians will expertly assess and service your Hyundai
- Should any parts need replacing during your servicing, your Hyundai will be fitted with Hyundai Genuine Parts

For more information, simply contact your local Hyundai dealer or our Customer Services team, who will be happy to help.

\* Price varies according to model, fuel type and mileage. Only available on vehicles registered on or after 1<sup>st</sup> March 2013. Price includes VAT where applicable. Time and mileage restrictions apply. Excludes seasonal checks. Terms and conditions apply.



## Hyundai Click To Buy™

Hyundai Click To Buy™ is the smarter, easier way to purchase a new car. Innovation has always been part of our DNA, and now we've streamlined the buying process itself. With a few simple clicks you can trade-in your old car, configure your new Hyundai, arrange finance and pay a deposit — all from your computer, tablet or smartphone device.

For added flexibility you can pay in cash, and the delivery arrangements couldn't be simpler. You can choose to get it delivered at your home at a cost, or collect it in the evening or weekend from your local dealer.

You'll be admiring your Hyundai in double-quick time thanks to the latest example of our new thinking philosophy.



## MyHyundai

MyHyundai is a complimentary and exclusive owners' club with a variety of unique benefits that'll make your ownership experience even more enjoyable.

As well as amazing offers that range from incredible getaways to indulgent gifts, you'll also be able to set your own alerts and preferences, while storing all your car's details in one, easily-accessible place.



## Staying In Touch

We're committed to offering you the very best. That means, as well as delivering impressive cars, we'll also deliver helpful advice and service, every step of the way. Simply contact us on **0800 981 981** or visit our website at [www.hyundai.co.uk](http://www.hyundai.co.uk)



Keep up to date with our news on our Facebook page at [www.facebook.com/hyundaiuk](http://www.facebook.com/hyundaiuk)



See all our latest tweets at [www.twitter.com/hyundai\\_uk](http://www.twitter.com/hyundai_uk)



View our latest videos at [www.youtube.com/user/hyundaimotoruk](http://www.youtube.com/user/hyundaimotoruk)

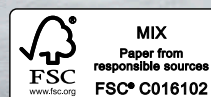
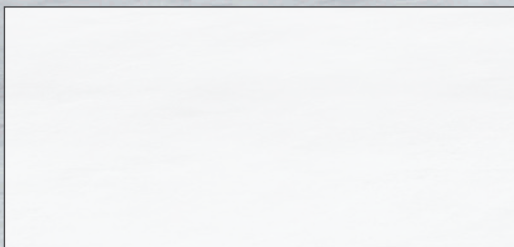


Specifications shown in this brochure are based upon the latest available information at the time of printing. The colours and finishes reproduced in this brochure are subject to the limitations of the printing process and may vary from the actual colour and paint finish.

In line with our policy of continual product improvement Hyundai Motor UK Ltd reserves the right to make changes at any time, without notice, to prices, colours, material, design, shape, specifications and models, and to discontinue items. For the latest details, please consult your Hyundai dealer.



Your local Hyundai dealer:



This brochure is printed on FSC® (Forestry Stewardship Council) certified paper which has been produced at a mill and printed by a printer that has been certified to the ISO 14001 environmental standard using vegetable oil based inks and aqueous based coatings. It can be disposed of by recycling, incineration for recovery or is biodegradable.

Customer enquiries: 0800 981 981

Model on front cover: IONIQ Hybrid Premium SE with optional 17" alloy wheels in Polar White solid paint. HB2479 07/17



Hyundai Motor UK Ltd  
728 London Road, High Wycombe, Bucks HP11 1HE  
T: 01494 428600 F: 01494 428699 [www.hyundai.co.uk](http://www.hyundai.co.uk)



	FUEL TYPE	CO <sub>2</sub> EMISSIONS G/KM	INSURANCE GROUP (1-50)	VED FIRST YEAR COST (£)	BASIC RETAIL PRICE (£)	VAT (£)	RETAIL PRICE (£)	RECOMMENDED ON THE ROAD PRICE (£)	RECOMMENDED ON THE ROAD PRICE (PLUG IN CAR GRANT)	P11D VALUE <sup>1</sup> (£)	BIK TAX % 2017-2018
IONIQ Hybrid											
SE 1.6 GDi 141PS 2WD DCT	P	79	10E	90.00	16,796.67	3,359.33	20,156.00	20,885.00	N/A	20,740.00	17
Premium 1.6 GDi 141PS 2WD DCT	P	79	10E	90.00	18,296.67	3,659.33	21,956.00	22,685.00	N/A	22,540.00	17
Premium SE 1.6 GDi 141PS 2WD DCT	P	79	11E	90.00	19,796.67	3,959.33	23,756.00	24,485.00	N/A	24,340.00	17
Premium SE 1.6 GDi 141PS 2WD DCT (17")	P	92	11E	110.00	20,113.33	4,022.67	24,136.00	24,885.00	N/A	24,720.00	17
IONIQ Plug-in Hybrid											
Premium 1.6 GDi	P	26	11E	0.00	22,380.00	4,476.00	26,856.00	27,495.00	24,995.00	27,440.00	9
Premium SE 1.6 GDi	P	26	12E	0.00	23,880.00	4,776.00	28,656.00	29,295.00	26,795.00	29,240.00	9
IONIQ Electric											
Electric Premium 28 kWh	N/A	0	16E	0.00	24,046.67	4,809.33	28,856.00	29,495.00	24,995.00	29,440.00	9
Electric Premium SE 28 kWh	N/A	0	17E	0.00	25,546.67	5,109.33	30,656.00	31,295.00	26,795.00	31,240.00	9

## Optional Extras

Metallic / Pearl Paint	470.83	94.17	565.00
17" Alloy Wheels*	333.33	66.67	400.00

## Accessories

POD Point 7 kW Home Charger**	250.00	50.00	300.00
-------------------------------	--------	-------	--------

## Hyundai Service Plans

Affordable Hyundai service plans are available across the range. Please ask your local dealer for details\*\*

\* Including Plug in Car Grant ( £4500 for IONIQ Electric, £2500 for IONIQ Plug-in Hybrid).

‡ 17" alloy wheels will increase the CO<sub>2</sub> emissions to 92g/km and will affect the mpg figures. Please check website for technical details.

\*\* POD Point Home Charger price includes installation and £500 (including VAT) of OLEV support. Additional installation costs may apply for non standard installations.

†† With the exceptions of the iLoad and i800, any current Hyundai vehicle registered in the UK is eligible provided that it is less than 13 months old and has yet to undergo its first service.