



i20







# We have a passion for progress.

The “can-do” spirit is at the heart of Hyundai’s heritage. It’s the attitude of progressing, no matter what. From humble beginnings, this vision has driven us to seek new challenges, encapsulated since our founding in the name ‘Hyundai’ – meaning ‘modern times’.

It’s the persistent curiosity for what lies ahead. Of always chasing the next. What was once a man’s desire for better is today the ethos of an entire company. As our founder said: “How does one know it’s impossible if one hasn’t tried it?”

Progress doesn’t happen by chance. We’re always pushing the borders of the possible, building tomorrow’s technology today, and powering the future with an ever-evolving range of zero-emission engines, seamless in-car connectivity and more.

We’ve come a long way. And we won’t stop here.

Car shown i20 Premium in Aurora Grey Pearl.





# The i20. With Attraction Control.

Building on a heritage of technology with eye-catching design and controlled power.



Car shown i20 Premium in Aurora Grey Pearl.

The i20 has been designed to offer great performance, dynamic styling, seamless connectivity and advanced safety technology throughout. Our 48 Volt Hybrid engine comes as standard, whilst the i20 N Line offers enhanced sportiness.



# Designed to deliver, styled to stand out.

Combining form and function to stand out in style.



The i20 is designed to deliver: Safe and exhilarating, poised and powerful, connected and clean. Styling features are led by the dynamic front grille and rear light cluster with enhanced LED lighting. Inside, premium audio and touch controls provide a feast for the senses.



Car shown i20 Premium in Aurora Grey Pearl.





# For the love of the road.

Dynamic, emission friendly driving from advanced technology and transformational design.



10.25" Touchscreen Navigation makes multi-media access easy.



# Clearly Connected.

The i20 comes with advanced infotainment from integrated mobile and vehicle technology.



Blueink® Connected Car Services. Standard on Premium and Ultimate.



10.25" Digital Cluster. Standard across all models.



In case of emergency, eCall directs first responders to you – fast. Standard across all models.



Mobile wireless charging brings convenience to the cabin. Standard on Ultimate.

We've boosted connectivity with improved technology and a seamless interface for your phone. Apple CarPlay™ and Android Auto™ mean you can take your apps on the road, and additional integrated mobile Blueink® Connected Car Services put you in close control even when you're away from the car. With the eCall button providing emergency safety as standard, the i20 puts you in touch with the world.



Car shown i20 Premium. Car shown not to UK Specification.





# The seat of power.

A spacious and elegant interior designed with the driver in mind.



The i20 has a spacious 5-seat interior layout.



Smooth manual gear change with the advanced E-clutch.



Dual Clutch Transmission (DCT) available across the i20 range.

The i20 sports a longer wheelbase and wider chassis for poise, better handling and a more spacious interior. From the driver's seat, refinement comes with a 10.25" Digital Cluster and easy-reach instrument controls, standard on every model. Standard on Ultimate, the BOSE Premium Sound System powers your drive.



# Safety never stops.

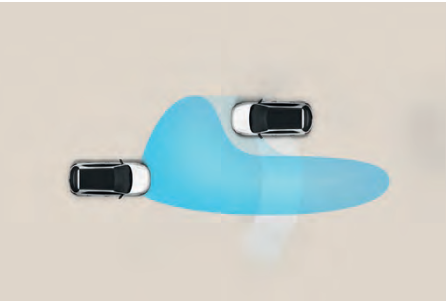
Advanced technology for always-on awareness.



**Driver Attention Warning (DAW):** When a pattern of fatigue or distraction is identified, the system gets your attention with an alert and pop-up message suggesting a break.



**Front Collision Avoidance (FCA):** The front view camera and radar sensors warn drivers of imminent collisions with cars, pedestrians and cyclists, applying the brakes when necessary to avoid collisions.



**High Beam Assist (HBA):** Less stress and maximum visibility. HBA not only detects oncoming vehicles but also vehicles in the same lane ahead and switches to low-beam as appropriate.



**Lane Follow Assist (LFA):** Smart sensors and the forward-facing camera detect when the car drifts from the centre of the lane, applying steering torque to maintain road positioning for safety. The car also estimates the trajectory of the vehicle ahead and adjusts its position accordingly. Standard on Ultimate trim only.



**Lane Keeping Assist (LKA):** Front multi-function camera is used to monitor the lines of the road. In case of an unintended lane departure, it warns you and can apply counter steering torque to guide the car back to the lane.



**Blind Spot Collision Warning (BCW):** Radars detect traffic in the vehicle blind spot, warning drivers with an audible alarm when the indicator is used so you can be aware of the traffic around you even when you can't see it. Standard on Ultimate trim only.

An emergency eCall button, rear parking sensors and rear-view camera feature on every model. Lane Keep Assist and Forward Collision Avoidance driver assist technologies are supplied as standard. An additional SmartSense Safety Package is standard on Ultimate, including Lane Follow Assist and Blind Spot Warning systems.



Car shown i20 Premium in Aurora Grey Pearl.









Car shown i20 N Line in Atlas White Solid with optional Phantom Black Pearl Two Tone Roof and matching door mirrors.



# Sports personality.

Powerful and energetic, i20 N Line makes a bold statement inside and out.



N Line body kit and chrome twin exhaust.



Unique 17 inch alloy wheels.



Alloy pedals and leather-wrapped gear stick.



Leather-wrapped steering wheel.



Black with red stitching throughout.

The i20 N Line features sporty design elements inspired by Hyundai's high-performance N range, combined with the efficiency of 48 Volt Mild Hybrid technology. You'll notice it immediately in the unique front grille, front and rear bumpers, 17 inch alloy wheels and chrome twin exhaust muffler. Also available are the two tone roof and matching wing mirrors in Phantom Black Pearl.

Signature N Line branding, red stitching and accents throughout the interior acknowledge motorsport heritage. The alloy pedals, leather-wrapped steering wheel and gear stick all add to the N Line's appeal.

But it's not just about looking the part. The more powerful 120 PS 1.0 litre T-GDi 48V Mild Hybrid engine – exclusive to N Line and available with either a manual or DCT transmission – ensures you'll feel the part too, every time you get behind the wheel.

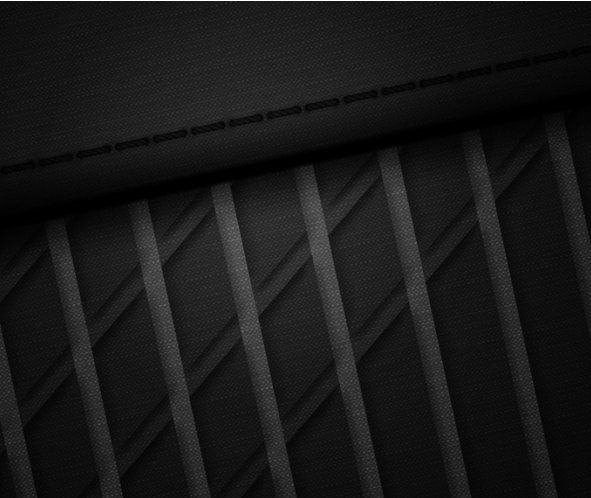


# Easy on the eye.

The stylish interior highlights the instrument cluster and vehicle controls.



Black Cloth seat standard on SE Connect, Premium and Ultimate.



Black Cloth seat standard on SE Connect, Premium and Ultimate.



Black and Red N-branded seat exclusive to N Line.



Black Mono standard on SE Connect and Premium.



Black and Grey standard on Ultimate.



Black and Red exclusive to N Line.



Car shown: i20 Premium.



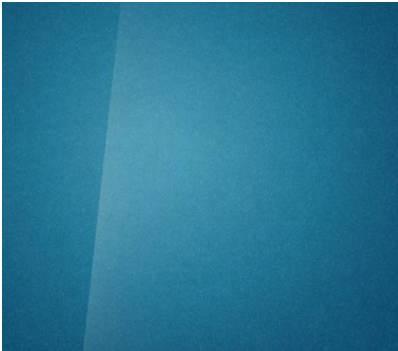
Single colours (not available on Ultimate):



Elemental Brass Metallic (No-cost option)



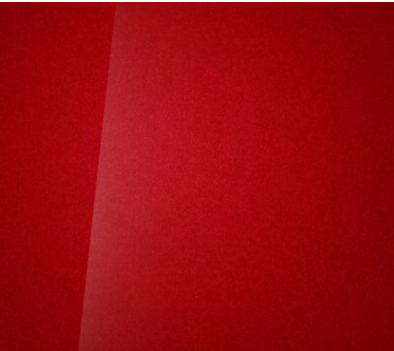
Sleek Silver Metallic\*



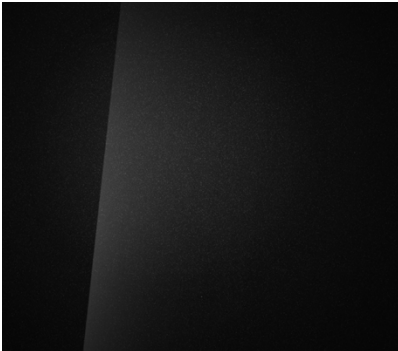
Aqua Turquoise Metallic\*



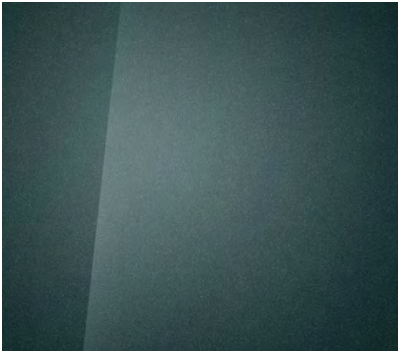
Atlas White Solid\*



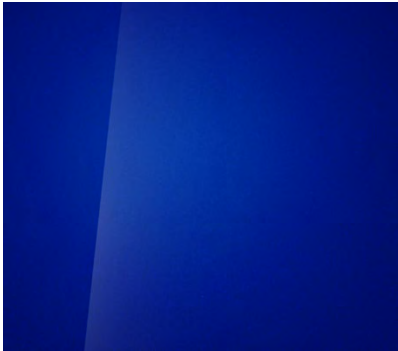
Dragon Red Pearl\*



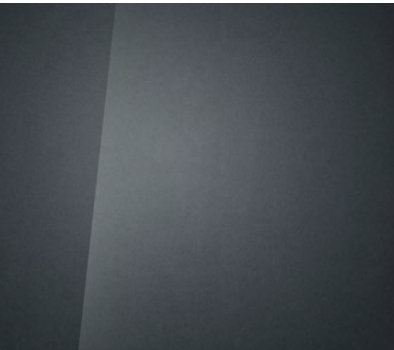
Phantom Black Pearl\*



Mangrove Green Pearl\*



Intense Blue Pearl\*

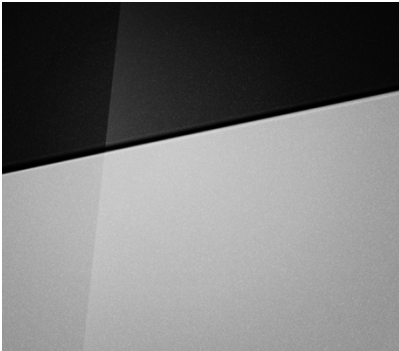


Aurora Grey Pearl\*

Colours available with Two Tone Roof (N Line and Ultimate only)\*\*



Elemental Brass Metallic/Phantom Black Pearl\*



Sleek Silver Metallic/Phantom Black Pearl\*



Aqua Turquoise Metallic/Phantom Black Pearl\*



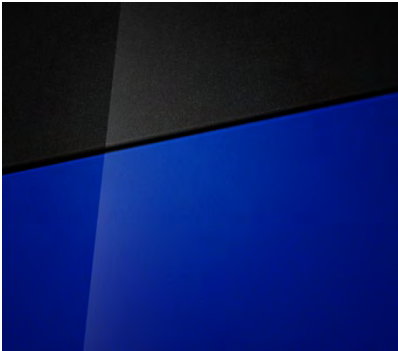
Atlas White Solid/Phantom Black Pearl\*



Dragon Red Pearl/Phantom Black Pearl\*



Mangrove Green Pearl/Phantom Black Pearl\*



Intense Blue Pearl/Phantom Black Pearl\*

\*Additional Cost Option  
\*\*Two Tone Roof is optional on N Line and standard on Ultimate.





SE Connect offers the following features as standard:

- 8" Touchscreen Display Audio
- 10.25" Digital Cluster
- 16" Alloy Wheels
- 48 Volt Hybrid Technology
- Apple CarPlay™ / Android Auto™
- Driver Attention Warning (DAW)
- DRL Inserts in Bumper
- eCall button
- Front Collision Avoidance (FCA)
- High Beam Assist (HBA)
- Intelligent Speed Limit Warning (ISLW)
- Lane Keeping Assist (LKA)
- Rear Parking Sensors
- Rear View Camera

Car shown i20 SE Connect in Aurora Grey Pearl.



N Line offers the following features over SE Connect:

- 10.25" Touchscreen Navigation with Bluelink®
- 17" Exclusive N Line Alloy Wheels
- Auto Dimming Rear View Mirror
- Auto Wipers
- Climate Control
- Dual Exhaust Muffler
- Electric Folding Mirrors
- Front Armrest
- Front Fog Lights
- Interior Mood Lighting
- LED Tail Lamps
- N Line Badging, Body Kit and Radiator Grille
- N Line Interior Branding, Accents and Seat Trim
- Rear Privacy Glass
- Rear USB Port
- Signature DRL Integrated into LED Headlamp
- Smart Key / Keyless Entry
- Phantom Black Pearl Two Tone Roof and matching door mirrors (Optional)

Car shown i20 N Line in Atlas White Solid with optional Phantom Black Pearl Two Tone Roof and matching door mirrors.





Premium offers the following features over SE Connect:

- 10.25" Touchscreen Navigation with Bluelink®
- 17" Alloy Wheels
- Auto Dimming Rear View Mirror
- Auto Wipers
- Chrome Window Surround
- Climate Control
- Electric Folding Mirrors
- Front Armrest
- Front Fog Lights
- Heated Front Seats & Steering Wheel
- Interior Mood Lighting
- LED Tail Lamps
- Rear Privacy Glass
- Rear USB Port
- Signature DRL Integrated into LED Headlamp

Car shown i20 Premium in Dragon Red Pearl.



Ultimate offers the following features over Premium:

- Blind Spot Collision Warning (BCW)
- BOSE Premium Sound System
- Forward Collision Assist (Junction Turning)
- Grey Dashboard Detail / Interior
- Lane Follow Assist (LFA)
- Smart Key / Keyless Entry
- Phantom Black Pearl Two Tone Roof and matching door mirrors (Standard)
- Wireless Charging Pad

Car shown i20 Ultimate in Intense Blue Pearl with Phantom Black Pearl Two Tone Roof and matching door mirrors.



# To fit your needs.

Choose from a range of selected style accessories to make your i20 all yours.



Carpet mats.



Boot mat.



All-weather mats with grey accent.



Boot liner.



Entry guards.



Speed stripe decals – available in black or white.



Racing stripe decals – available in black or white.



Rear bumper trim - Phantom Black Pearl.



Front lamp trim - Phantom Black Pearl.

Choose from a range of accessories to customise your i20 to meet the demands of your lifestyle. Interior protection options include boot liners, all-weather mats and carpet mats.



Specifications shown in this brochure are based upon the latest available information at the time of publication.

In line with our policy of continual product improvement, Hyundai Motor UK Ltd reserves the right to make changes at any time, without notice, to prices, colours, materials, designs, shapes, specifications and models, and to discontinue items. For the latest details, please consult your Hyundai dealer.



Hyundai Motor UK Ltd,  
Ground Floor, Birchwood Building,  
The Office Park, Springfield Drive,  
Leatherhead, KT22 7LP  
T: 0800 981 981 [www.hyundai.co.uk](http://www.hyundai.co.uk)

Cars shown on front and rear covers i20 Premium in Aurora Grey Pearl.