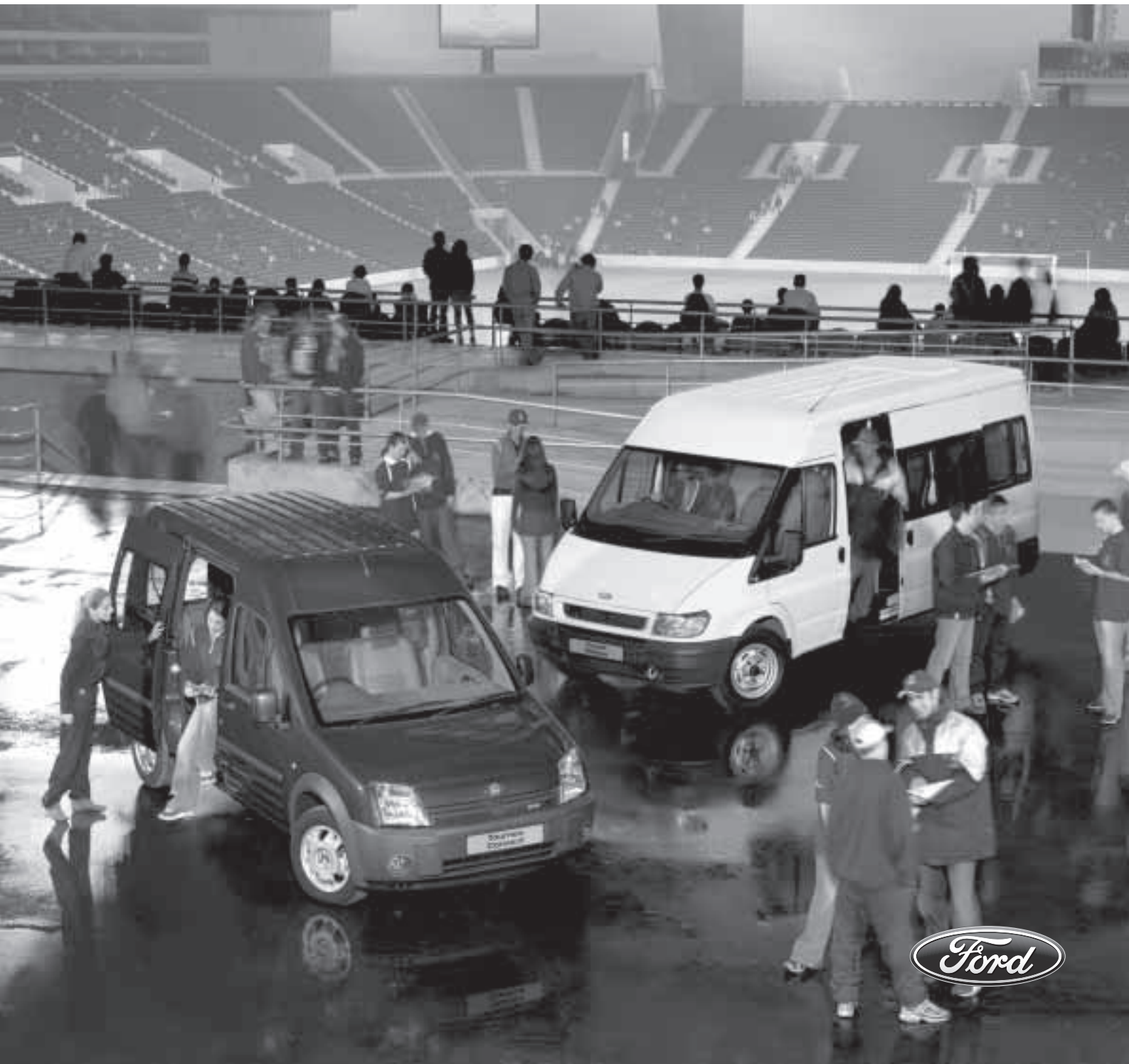


# Ford People Movers

Job done

## Specification

March 2004





# Ford**TourneoConnect**

## Highlights

- Flexible 5-seat accommodation
- Driver's and front passenger's airbags\* standard on LX (passenger's airbag\* optional, at extra cost on Tourneo Connect)
- Electronic anti-lock brakes (ABS) with electronic brake-force distribution\*
- 1.8-litre TDCi Common-Rail 90 PS / 220 Nm diesel engine
- Maximum cargo volume of 4.2 cu.m
- Removable 60:40 split back rear seats
- Central / double locking

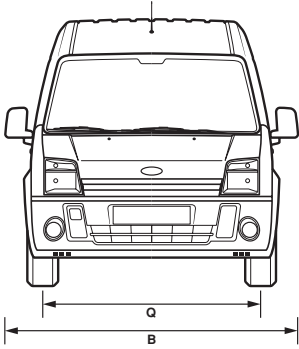
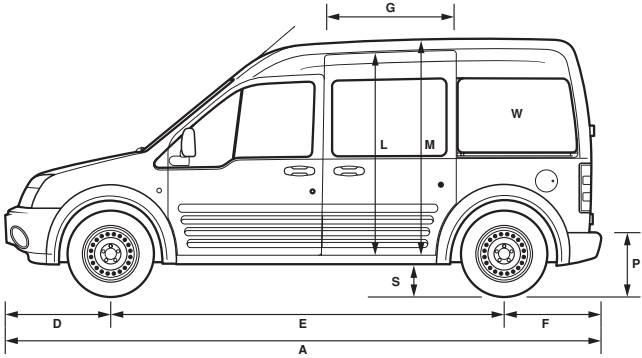
When your vehicle has to work for a living and handle your leisure time too, making the right choice is doubly important.

Business demands are different from those of a family. But the Ford Tourneo Connect can comfortably satisfy both. Developed to change the way you work and play, it brings traditional Ford Transit toughness and durability to the dual-use market for the very first time.

**\*Note: A rear-facing child seat should never be placed in the front passenger seat when the Ford vehicle is equipped with an operational front passenger's airbag. The safest place for children is properly restrained on the rear seat.**

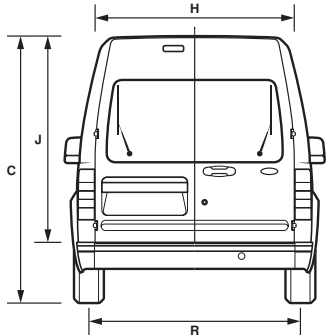
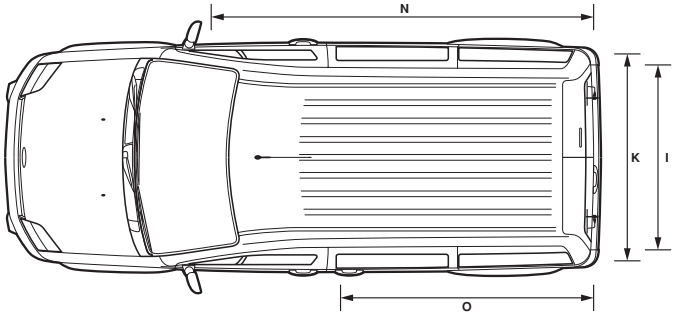
Long wheelbase

- Dimensions (mm)
- A 4525
  - B 2044
  - B 1795
  - C 1906/1981
  - D 864
  - E 2912
  - F 749
  - G 809
  - H 1293
  - I 1219
  - J 1313
  - K 1492
  - L 1184
  - M 1320
  - N 2714
  - O 1830
  - O 1986
  - O 2007
  - P 496/601
  - Q 1505
  - R 1552
  - S 166
  - W 3.5 (cu.m)<sup>†</sup>
  - W 1.83 (cu.m)<sup>†</sup>
  - W 3.07 (cu.m)<sup>†</sup>
  - W 4.2 (cu.m)<sup>†</sup>



Additional information

Interior – Front	(mm)
Effective headroom	1304
Maximum effective leg room	1008
Shoulder room	1382
Hip room	1284
Interior – Rear	
Effective headroom	1270
Maximum effective leg room	915
Shoulder room	1564
Hip room	1550
Load Length	1172
(2nd row seat to rear)	
Load Length	1529
(2nd row seat folded)	



Tourneo Connect

- A Overall length
- B Overall width with mirrors
- B Overall width without mirrors
- C Overall height (laden/unladen)
- D Front overhang
- E Wheelbase
- F Rear overhang
- G Side door entry width
- H Rear door opening width below belt

- I Load width between wheel arches
- J Rear door opening height
- K Load width
- L Side door opening height
- M Load floor to roof
- N Load length (max) (passenger's seat folded)
- O Load length (laden to belt line)
- O Load length (back of front seat)

- O Load length (passenger's fold-flat seat up)
- P Loading height (laden/unladen)
- Q Front track
- R Rear track
- S Ground clearance
- W Loadspace
- W Loadspace (2nd row seat up)
- W Loadspace (2nd row seat folded)
- W Loadspace (passenger seat folded)

<sup>†</sup>Measured using the VDA method. Dimensions may vary dependent on the model and equipment fitted.

Model availability

	Tourneo Connect	LX
Ford Tourneo Connect		
1.8 Duratorq TDCi (90 PS) diesel	●	●

## Weights and loads

	Payload (Gross) (kg) <sup>†</sup>	Gross vehicle mass (kg)	Kerb mass <sup>#</sup> (kg)	Rear axle ratio	Max GTM (kg)* with quoted axle ratio
<b>Ford Tourneo Connect</b>					
1.8 Duratorq TDCi (90 PS) diesel	800	2340	1540	4.06	3140

\*Maximum 12% gradability. <sup>†</sup>**Payload** = Gross vehicle mass, less kerb mass. <sup>#</sup>Represents the lightest kerbweight assuming full fluid levels and 90% fuel levels, subject to manufacturing tolerances and options, etc., fitted. **GVM** = Gross vehicle mass. The total permissible all-up weight of a rigid vehicle – i.e. with body, payload, ancillaries, fuel, oil, water, driver and crew. **Kerb mass** = The weight of the complete vehicle and all equipment including fuel and water, but without payload, driver or any crew. All kerb masses quoted in this brochure are subject to manufacturing tolerances and are for vehicles with minimum equipment. **GTM** = Gross train mass. The total permissible all-up weight of a rigid vehicle (see GVM) together with its trailer and load.

## Engine data

	Engine technical features	Maximum power <sup>°</sup>	Maximum torque <sup>°</sup>
<b>1.8L Duratorq TDCi 8V</b> 1753 cc	Cylinders – 4 in-line / Turbo common-rail fuel injection with electronic engine management system / Exhaust Gas Recirculation	66 kW (90 PS) at 4000 min <sup>-1</sup> (rpm)	220 Nm at 1750 min <sup>-1</sup> (rpm)

<sup>°</sup>Tested in accordance with ISO 1585.

## Mechanical features

	Tourneo Connect	LX
<b>Brakes</b>		
Diagonally-split, with dual-line servo-assistance. Front discs, rear drums	●	●
Anti-lock brakes (includes electronic brake-force distribution)*	●	●
<b>Fuel tank</b>		
Capacity – 60 litres	●	●
<b>Steering</b>		
Power-assisted	●	●
Steering column – Rake/reach-adjustable	●	●
<b>Suspension and body</b>		
Front – Independent with MacPherson struts, variable-rate coil springs, gas-pressurised shock absorbers, and anti-roll bar	●	●
Rear – Multi-leaf springs, gas-pressurised shock absorbers, and anti-roll bar	●	●
Side-impact door beams, front. Collapsible steering column. Energy absorbing crumple zones, front and rear	●	●
Towing eyes – Front and rear	●	●
<b>Turning circle</b>		
Kerb to kerb – 11.9 m	●	●

● = Standard.

## Fuel, performance and emissions

	CO <sub>2</sub> emissions (g/km) <sup>°°</sup>	Fuel consumption L/100 km (mpg) <sup>°°</sup>			Performance <sup>°</sup> Max. speed (mph)	0-62 mph (secs)	30-50 mph* (secs)
<b>Ford Tourneo Connect</b>							
1.8 Duratorq TDCi (90 PS) diesel	172	7.9 (35.8)	5.8 (48.7)	6.5 (43.5)	96	16.3	14.9

\*In 4th gear. <sup>°</sup>Ford test figures. <sup>°°</sup>All CO<sub>2</sub> emissions figures in g/km and fuel consumption figures in L/100 km (mpg) are from officially approved tests in accordance with EEC Directive 1999/100/EC. The CO<sub>2</sub> emissions and fuel consumption test figures shown in the chart do not express or imply any guarantee of the emissions or fuel consumption of a vehicle of the class in question. All the figures are based on tests conducted on vehicles with standard wheels and tyres; optional or accessory wheels and tyres may have an effect on the emissions and fuel consumption of a vehicle. **Urban** An engine started from cold in laboratory conditions operated at varying speeds, maximum 31 mph, average 12 mph over a theoretical distance of 2.5 miles (4 km). **Extra Urban** Conducted immediately after the urban cycle, it consists of half steady speed driving and half varying speed driving, maximum 75 mph over a distance of 4.3 miles (7 km). **Combined** This is an average of the two parts of the test, weighted by the distances covered in each part. **Note** All vehicles are 5-speed manual.



## Safety and security

	Tourneo Connect	LX
Airbag – Driver's	●	●
– Front passenger's*	○	●
Airbags – Front side impact (not available with fold-flat passenger's seat)*	○	●
Alarm – Perimeter	○	○
Immobiliser – Passive Anti-Theft System (PATS)	●	●
Locks – High-security, lock-in-latch system, shielded with strengthened mountings	●	●
– Remote keyless entry	●	●
– Central/double locking	●	●
– Key-operated bonnet release	●	●
Fuel cap – Locking with body colour flap	●	●
Vehicle Identification Number (VIN) – Visible	●	●

\*Note: A rear-facing child seat should never be placed in the front passenger's seat when the Ford vehicle is equipped with a front passenger's or side airbags.

## Exterior features

	Tourneo Connect	LX
<b>Exterior appearance and styling</b>		
Bodyside mouldings – One-piece, self colour	●	●
Bumpers – Self colour	●	●
Paint – Metallic	○	●+
Wheel-lip mouldings – Self colour	●	●
<b>Exterior functional</b>		
Door mirrors – Manual internal control, flat folding, black housings	●	
– Enhanced rear vision	●	●
– Electrically-operated and heated, black housings	□	●
Doors – Hinged rear doors, glazed	●	●
– Driver and passenger side sliding load doors, glazed	●	●
Heated rear window(s)	□	●
Winter Pack – Electrically-operated and heated door mirrors, 'Quickclear' heated front windscreen (includes heated washer jets)	○	
Rear Vision Pack – Rear wiper with fixed intermittent wipe and electric wash, heated rear window(s)	○	●
Parking distance sensor – Rear	○	○
Tinted glass – Front door windows and windscreen only	●	●
– Heavy tint privacy, all rear windows	□	□
Towing eyes – Front and rear	●	●
Windscreen – Laminated	●	●
– 'Quickclear' heated front (includes heated washer jets)	□	●
Wipers – Front, 2-speed, with intermittent wipe and electric wash	●	●
– Rear, with fixed intermittent wipe and electric wash	□	●
Halogen headlights, side lights, rear fog lights, reversing lights	●	●
High-mounted rear brake light	●	●
Fog lights – Front	○	●

● = Standard, ○ = Option, at extra cost, □ = Part of an option pack, at extra cost, ●+ = Option, at no extra cost.

## Interior features

	Tourneo Connect	LX
<b>Audio</b>		
Option Pack 14 – Stereo AM/FM radio/CD, Model 6006E RDS EON with 6-disc in-dash CD autochanger, 'Keycode' anti-theft coding, steering column-mounted remote audio controls	○	
Option Pack 13 – Stereo AM/FM radio/CD, Model 6000N RDS EON, 'Keycode' anti-theft coding, steering column-mounted remote audio controls	○	●
Stereo AM/FM radio/cassette – Model 4000 RDS, 'Keycode' anti-theft coding, 2 speakers	●	
Stereo AM/FM radio/CD – Model 6000N RDS EON, 'Keycode' anti-theft coding, 2 speakers	□	●
– Model 6006E RDS EON, with 6-disc in-dash CD autochanger, 'Keycode' anti-theft coding, 2 speakers	□	○
Speaker upgrade – 4 speakers in lieu of 2 (not available with 4000 RDS)	○	○
Steering column-mounted remote audio controls (not available with 4000 RDS)	□	●
<b>Carpet and trim</b>		
Carpet – Non-woven velour	●	●
Door trim – Moulded panel with pull handles and, on front doors only, door bins	●	●
Gear lever gaiter – Black	●	●
Gear knob – Black with acrylic insert	●	●
<b>Interior lighting</b>		
Courtesy light – Header-mounted, front door-operated	●	●
Load compartment lights – Two, roof-mounted	●	●
<b>Instruments and controls</b>		
Control stalks – Column-mounted for master lights, indicators and wash/wipe functions	●	●
Illuminated heater controls – 4-speed fan. Four vents with temperature and direction control	●	●
Instruments – Speedometer, engine temperature, fuel level gauges, tachometer and trip recorder	●	●
Warning indicators for oil pressure, direction indicators, glow plugs, main beam, ignition/alternator, brake failure, handbrake on, airbag(s), low fuel level, 'lights on' audible warning, ABS, traction control, check engine	●	●
Steering wheel – Black	●	●
<b>Seats and seat belts</b>		
Front seat – Driver's 6-way manual adjustment	●	●
– Passenger's 4-way manual adjustment (includes under seat storage)	●	●
– Driver's armrest and adjustable lumbar support	○	○
– Passenger's fold-flat seat for loadbox extension	○	○
Front seats – Anti-submarining, fully reclining with height-adjustable head restraints	●	●
Storage pockets – Driver's and front passenger's seat back (not available on fold-flat seat)	●	●
Rear seat – Folding back, removable	●	●
– 60:40 split back	●	●
Rear seats – Head restraints on all seats	●	●
Seat trim – Fabric	●	●
– Prima grain vinyl	○	
Seat belts – Front, inertia reel, with grabbers, static buckle and roto pre-tensioner (driver's seat only) and height-adjustable mounts	●	●
– Rear, inertia reel lap and diagonal	●	●
<b>Comfort and convenience</b>		
Accessory socket	●	●
Air conditioning – CFC-free with air recirculation	○	●
Centre console – Includes coin tray, pen holder and 2 cup holders	●	●
Clock – Digital	●	●
Coat hooks – 4	●	●
Glovebox	●	●
Grab handle – Passenger's front	●	●
Heater – Recirculation	●	●
– Supplementary heater (fuel-fired)	●	●
Mirror – Dipping rear-view	●	●
Option Pack 25 – Cargo tonneau cover and heavy tint privacy glass on all rear windows	○	○
Smokers' Pack – Cigar lighter and ashtray	○	○
Storage – Centre facia-mounted clipboard holder	●	●
– Under passenger's seat, lockable (included with 4-way manual adjustment passenger seat)	●	●

● = Standard, ○ = Option, at extra cost, □ = Part of an option pack, at extra cost.

## Interior features

	Tourneo Connect	LX
<b>Comfort and convenience (continued)</b>		
Sunvisor – Driver's with ticket strap	●	●
– Passenger's with covered mirror	●	●
Windows – Front, electrically-operated with 'one touch' lowering on driver's side	○	●
<b>Luggage compartment</b>		
Load liner – Floor	●	●
– Half-height sidewall liner and wheel arch liner	●	●
Storage – Door stowage bin and net	●	●
Tie-down hooks – 4	●	●
Cargo tonneau cover	□	□

● = Standard, ○ = Option, at extra cost, □ = Part of an option pack, at extra cost.

## Special vehicle options

	Tourneo Connect	LX
250° Rear doors	○	○
SVO Paint package	○	○

## Wheel availability

	Tourneo Connect	LX
Wheels – 6x15" steel with full wheelcover (full-size spare) and 195/65 R15 tyres	●	●
– 15" 5-spoke alloy wheels with locking wheel nuts (full-size steel spare) and 195/65 R15 tyres	○	○

● = Standard, ○ = Option, at extra cost.

## Notes







# Ford**Tourneo**

## Highlights

- Available in 8- and 9-seat models
- Driver's and outer front passenger's airbags\*
- Electronic anti-lock brakes (ABS) with electronic brake-force distribution and Traction Assist
- 2.0-litre TDCi Common-Rail 125 PS / 285 Nm diesel engine
- Short wheelbase, front-wheel drive configuration
- Front air conditioning
- Tinted windows
- Central / double locking with remote keyless entry

Don't split-up the board of directors, take the Ford Tourneo instead. With up to nine seats, including the driver, there's bags of room for everyone and their luggage too. From an airport shuttle to an executive taxi, the Ford Tourneo is the perfect way to conduct your business affairs.

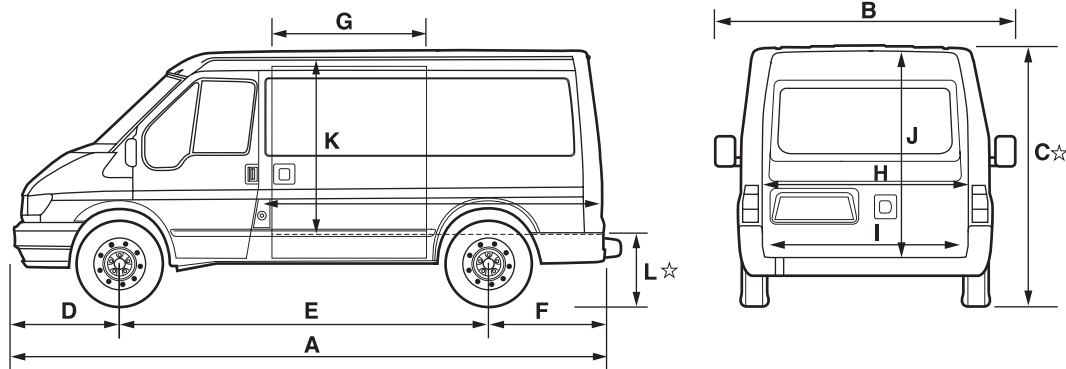
**\*Note: A rear-facing child seat should never be placed in the front passenger seat when the Ford vehicle is equipped with an operational front passenger's airbag. The safest place for children is properly restrained on the rear seat.**

## 8/9-seat Tourneo

### Front-Wheel Drive

Dimensions (mm)

A	4834
B	2360/1974
C	1970/1974
D	904
E	2933
F	997
G	1030
H	1540
I	1390
J	1370
K	1352
L	518 (unladen)
L	440 (laden)



### Tourneo

**A** Overall length (excluding rear step)  
**B** Overall width (with/without mirrors)  
**C** Unladen height<sup>☆</sup>  
**D** Front of vehicle to front wheel centre

**E** Wheelbase  
**F** Rear of vehicle to rear wheel centre  
**G** Side door entry width  
**H** Rear door entry width

**I** Floorspace between wheel arches  
**J** Rear door/tailgate entry height  
**K** Side door entry height  
**L** Loading height<sup>☆</sup>

**Key:** All dimensions (shown in mm) are subject to manufacturing tolerances and refer to minimum specification models and do not include additional equipment. <sup>☆</sup> Height dimensions show the range from minimum to maximum of a fully laden, lowest payload vehicle to unladen highest payload vehicle. These illustrations are for guidance only.

## Model availability

	Driveline	8-seat GLX	9-seat
<b>Tourneo</b>			
2.0 Turbo Diesel (TDCi) Intercooled 92 kW (125 PS)	FWD	●	●

## Weights and loads

	Payload (gross) (kg)	Gross vehicle mass (kg)	Kerb mass (kg)	Front axle plated mass (kg)	Front axle kerb mass (kg)	Rear axle plated mass (kg)	Rear axle kerb mass (kg)	Axle ratio	Max. GTM (kg) with quoted axle ratio
<b>8-seat GLX (280 SWB)</b>									
2.0 TD 125 PS	840	2800	1960	1400	1086	1550	874	4.23	4000
2.0 TD 125 PS	840	2800	1960	1400	1086	1550	874	4.54	4500
<b>9-seat (280 SWB)</b>									
2.0 TD 125 PS	840	2800	1960	1400	1094	1550	866	4.23	4000
2.0 TD 125 PS	840	2800	1960	1400	1094	1550	866	4.54	4500

**Key: Payload** = Gross vehicle mass, less kerb mass. **GVM** = Gross vehicle mass. The total permissible all-up weight of a rigid vehicle – i.e. with body, payload, ancillaries, fuel, oil, water, driver and crew. **Kerb mass** = The weight of the complete vehicle and all equipment including fuel and water, but without payload, driver or any crew. All kerb masses quoted in this brochure are subject to manufacturing tolerances and are for vehicles with minimum equipment. **Plated mass** = The maximum weight allowed to be imposed on the axle (GVM must not be exceeded). **GTM** = Gross train mass. The total permissible all-up weight of a rigid vehicle (see GVM) together with its trailer and load.

## Engine data

	Engine technical features	Maximum power <sup>o</sup>	Maximum torque <sup>o</sup>
<b>2.0 Di Common-Rail Turbo Diesel Intercooled (EGR) 92 kW (125 PS) 1998 cc</b>	Cylinders – 4 in-line / 16 valves, 4 per cylinder / Turbocharged diesel with computer-controlled fuel injection / Intercooler / Compression ignition / Catalytic converter	92 kW (125 PS) at 3800 min <sup>-1</sup> (rpm)	285 Nm at 1500-2200 min <sup>-1</sup> (rpm)

All models are 5-speed manual transmission. <sup>o</sup>Tested in accordance with ISO 1585. **EGR (Exhaust Gas Recirculation)** – A process whereby diesel engine exhaust is partially pumped back into the combustion cycle to reduce emissions.

## Fuel, performance and emissions

	Axle ratio	CO <sub>2</sub> emissions (g/km) <sup>o</sup>	Fuel consumption in L/100 km (mpg) <sup>o</sup>		
			Urban	Extra Urban	Combined
<b>Tourneo and Tourneo GLX</b>					
2.0 TD 92 kW (125 PS)	4.23	208	9.3 (30.4)	6.6 (42.8)	7.6 (37.2)
	4.54	208	9.4 (30.1)	6.7 (42.2)	7.7 (36.7)

<sup>o</sup>All CO<sub>2</sub> emissions figures in g/km (based on 'Combined' cycle figures) and fuel consumption figures in L/100 km (mpg) are from officially approved tests in accordance with EEC Directive 1999/100/EC. The CO<sub>2</sub> emissions and fuel consumption test figures shown in the chart do not express or imply any guarantee of the emissions or fuel consumption of a vehicle of the class in question. All the figures are based on tests conducted on vehicles with standard wheels and tyres; optional or accessory wheels and tyres may have an effect on the emissions and fuel consumption of a vehicle. **Note:** All vehicles are 5-speed manual. **Urban** An engine started from cold in laboratory conditions operated at varying speeds, maximum 30 mph (50 km/h), average 12 mph (19 km/h) over a theoretical distance of 2.5 miles (4 km). **Extra Urban** Conducted immediately after the urban cycle, it consists of half steady speed driving and half varying speed driving, maximum 75 mph (120 km/h) over a distance of 4.3 miles (7 km). **Combined** This is an average of the two parts of the test, weighted by the distances covered in each part.

## Mechanical features

	8-seat GLX	9-seat
<b>Engine</b>		
Road speed limiter (max. 70 mph) (diesel engines only)	○	○
<b>Brakes</b>		
Dual-circuit, with self-adjusting servo-assistance. Front discs and rear drums	●	●
Electronic anti-lock brakes (with electronic brake-force distribution)	●	●
Traction Assist	●	●
Front brakes – Brake pad wear indicator	●	●
<b>Fuel tank</b>		
80 litres	●	●
<b>Steering</b>		
Power-assisted steering	●	●
<b>Suspension</b>		
Front, independent MacPherson struts, variable rate coil springs and gas-pressurised shock absorbers. Rear, leaf springs and gas-pressurised shock absorbers	●	●
Front – Anti-roll bar	●	●
<b>Axle ratios</b>		
Final drive ratio – 4.23 (Front-Wheel Drive vehicles only)	●	●
– 4.54 (Front-Wheel Drive vehicles only)	●	●
<b>Turning circle</b>		
Kerb to kerb – 10.8 m, wall to wall 11.4 m	●	●

● = Standard, ○ = Option, at extra cost.



## Safety and security

	8-seat GLX	9-seat
<b>Safety</b>		
Anti-lock brakes – Electronic (with electronic brake-force distribution)	●	●
Traction Assist (includes anti-lock brakes)	●	●
Airbag – Driver	●	●
– Outer front passenger*	●	●
Exterior mirrors – Enhanced rear vision	●	●
Seat belts – 3-point lap and diagonal inertia reel with grabbers (all front seats)	●	●
– 3-point lap and diagonal inertia reel with grabbers (all rear seats)	●	●
– Height-adjustable seat belt mount (driver only)	●	●
– Height-adjustable seat belt mount (outer front passenger)	●	●
<b>Security</b>		
Audio – ‘Keycode’ anti-theft coding	●	●
– Removable control panel	●	●
Alarm – Perimeter (Standard on Tourneo GLX)	●	○
Fuel cap – Locking	●	●
Immobiliser – ‘Safeguard’ Passive Anti-Theft System – (certified to Thatcham Category 2)	●	●
Locks – High security, lock-in-latch system, shielded with strengthened mountings	●	●
– Remote keyless entry central, double locking	●	●
– Key-operated bonnet release	●	●
– 2nd remote control key fob	○	○
Steering wheel – Torque slip, anti-theft	●	●
Vehicle Identification Number – Visible	●	●

\*Note: A child seat should never be placed in the front passenger seat when the Ford vehicle is equipped with an operational front passenger’s airbag.

## Exterior features

	8-seat GLX	9-seat
<b>Exterior appearance and styling</b>		
Body – Low roof	●	●
Bodyside mouldings	●	○
Bumpers – Full width, front and rear	●	●
Paint – Metallic	○	○
Tyres – Dunlop	○	○
– Goodyear (Mud and snow)	○	○
– Michelin (All-weather)	○	○
Wheels – 5½x15" steel wheels with centre hub covers and 195/70R 15C tyres		●
– 5½x16" alloy wheels (steel spare) and 205/65R 16C tyres	●	○
– Partial wheelcovers		●
<b>Exterior functional</b>		
Doors – With drop window and winder handle		●
– With power window and control	●	
– Left-hand sliding side door (low/narrow)	●	●
– Right-hand sliding side door (low/narrow)	●	●
– Glazed rear doors (includes rear-view mirror) 180° opening, positive stop at 90°. On Tourneo models this option includes: heated rear windows, twin rear wipers and high-mounted rear brake light	○	○
– Rear tailgate (includes heated rear window)	●	●
Exterior mirrors – Power-operated and heated	●	○
Mudflaps – Front and rear	○	○
Towing eyes – Front and rear	●	●
Tow bar (not available with optional integrated bumper step, rear centre step or rear parking distance sensor) with 13-pin electrics (tachograph may be required, dependent on model)*	○	○
Windows – Front, power-operated	●	○
– Heated rear	●	●
– 2nd row, right-hand side, fixed	●	
– 2nd row, right-hand side, sliding		●
– 2nd row, left-hand side, fixed	●	



## Exterior features

	8-seat GLX	9-seat
<b>Exterior functional (continued)</b>		
– 2nd row, left-hand side, sliding		●
– 3rd row, left-hand and right-hand side, rear quarter, fixed	●	●
Glass – Light tint windscreen/dark tint passenger glass	●	●
Windscreen – Laminated	●	●
– ‘Quickclear’ heated	○	○
Wipers – Front, two-speed with electric wash	●	●
– Tailgate, with electric wash (includes high-mounted rear brake light)	●	●
<b>Exterior lighting</b>		
Halogen headlights, side lights, rear fog lights, reversing lights	●	●
Front fog lights	○	○
Headlight levelling	●	●
High-mounted rear brake light	●	●

\***Tachograph** When a vehicle is fitted with a trailer towing attachment, it is recommended that a tachograph is fitted, since the ability to tow a trailer giving a GTM of over 3500 kg without a tachograph could be considered to be contrary to EU and UK road traffic law.

## Interior features

	8-seat GLX	9-seat
<b>Audio</b>		
Stereo radio/cassette – Model 4000 RDS, ‘Keycode’ anti-theft coding, removable control panel, 4 speakers	○	●
Stereo radio/CD – Model 6000 RDS, ‘Keycode’ anti-theft coding, removable control panel, 4 speakers	●	○
<b>Carpet and trim</b>		
Cab headlining – Moulded	●	●
Door trim – Front, moulded with pull handles and storage pockets	●	●
Carpet – Full length	●	●
Headlining – Moulded full length	●	●
<b>Interior lighting</b>		
Courtesy lights – Header-mounted, front door-operated with delayed switch-off	●	●
Passenger area light(s)	●	●
<b>Instruments and controls</b>		
Cold start (Thermostart for –20°C starting)	●	●
Control stalks – Column-mounted for indicators and wash/wipe functions	●	●
Illuminated heater controls – 3-speed fan. Four vents with temperature and direction control, two dedicated side window demisters	●	●
Instruments – Speedometer, tachometer, odometer, fuel gauge, water temperature gauge, trip recorder	●	●
Tachograph – Electronic, 24-hour*	○	○
Warning lights for oil pressure, direction indicator, main beam, lights on, ignition/alternator, brake failure, ABS, airbag(s), glow plugs, oil change, low fuel, traction control	●	●
<b>Seats</b>		
Seat trim – Fabric	●	●
Seats – Premium fabric trim; driver’s 8-way manual adjustment with armrests; dual fixed passengers’ seat; height-adjustable head restraints	○	●
– Premium fabric trim; driver’s heated, 8-way manual adjustment with armrests; single passenger’s heated, 8-way manual adjustment with armrests; height-adjustable head restraints	●	○
Second row – Triple narrow seat with split back on outer seat (left-hand side) includes armrests on Tourneo GLX	●	●
Third row – Triple/fold and roll seat includes armrests on Tourneo GLX	●	●
Seat belts – Height-adjustable mount, driver’s side	●	●
– Height-adjustable mount, outer front passenger	●	●
<b>Comfort and convenience</b>		
Accessory socket 12V	○	○
Air conditioning – Front, CFC-free	●	●
– Rear, CFC-free (only available with front air conditioning)	●	○
Rear compartment heating (not available with rear air conditioning)		○
Clock – Digital	●	●
Cup holder – Twin, fascia-mounted, drop-down	●	●
Glovebox – With lid	●	●

## Interior features

	8-seat GLX	9-seat
<b>Comfort and convenience</b> (continued)		
Smokers' Pack – Cigar lighter and ashtray	○	○
Storage – Front door pocket	●	●
– Facia-mounted on passenger's side, with cup holder	●	●
– Centre facia-mounted document holder, with integral cover	●	●
– Facia-mounted stowage slot	●	●
Steering wheel – Leather-covered	●	●
Sunvisors – Two, swivelling (passenger visor includes mirror)	●	●

● = Standard, ○ = Option, at extra cost.

\***Tachograph** When a vehicle is fitted with a trailer towing attachment, it is recommended that a tachograph is fitted, since the ability to tow a trailer giving a GTM of over 3500 kg without a tachograph could be considered to be contrary to EU and UK road traffic law.

## Notes









## Ford**Transit** Minibus

### Highlights

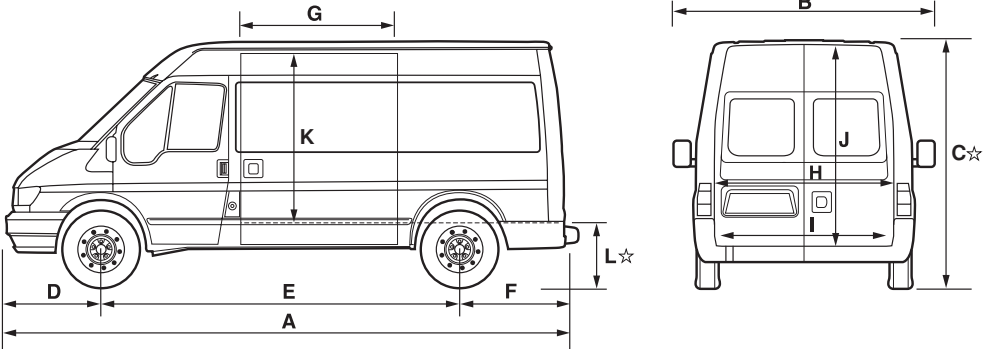
- Available in 12-, 15- and 17-seat models
- Driver's and outer front passenger's airbags\*
- All seats and fixings tested to meet strict safety standards
- Three-point lap-and-diagonal inertia reel seat belts
- Seat belts tested to perform under a mean deceleration of 20 G – twice the normal M2 (commercial) test
- Electronic anti-lock brakes (ABS) with electronic brake-force distribution
- 'Schedule 6' pack
- New optional 2.4-litre TDCi Common-Rail 137 PS / 375 Nm diesel engine with six-speed manual transmission

The award-winning Ford Transit Minibus range offers generous accommodation for up to 17 people. So taking the football team to an away game is never a problem. A light and airy interior with comfortable seating makes every journey a pleasure, while industry-leading levels of safety and security allow you further opportunities to relax.

**\*Note: A rear-facing child seat should never be placed in the front passenger seat when the Ford vehicle is equipped with an operational front passenger's airbag. The safest place for children is properly restrained on the rear seat.**

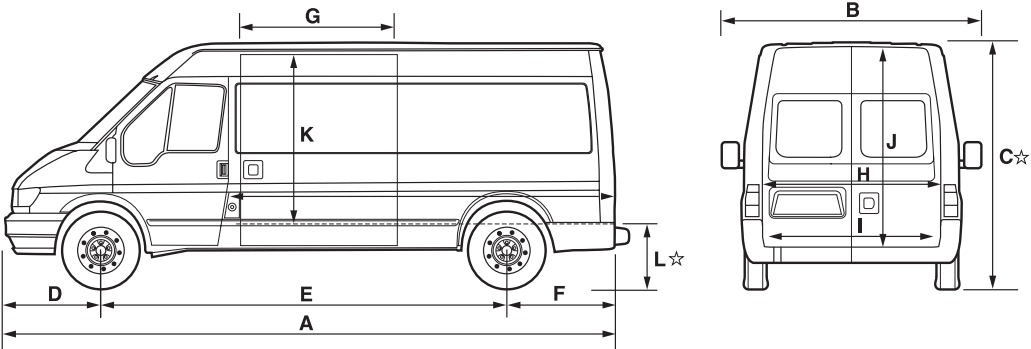
12-Seat Bus

Front-Wheel Drive  
Dimensions (mm)  
A 5201  
B 2360/1974  
C 2309  
D 904  
E 3300  
F 997  
G 1250  
H 1540  
I 1390  
J 1666  
K 1565  
L 532 (unladen)  
L 440 (laden)



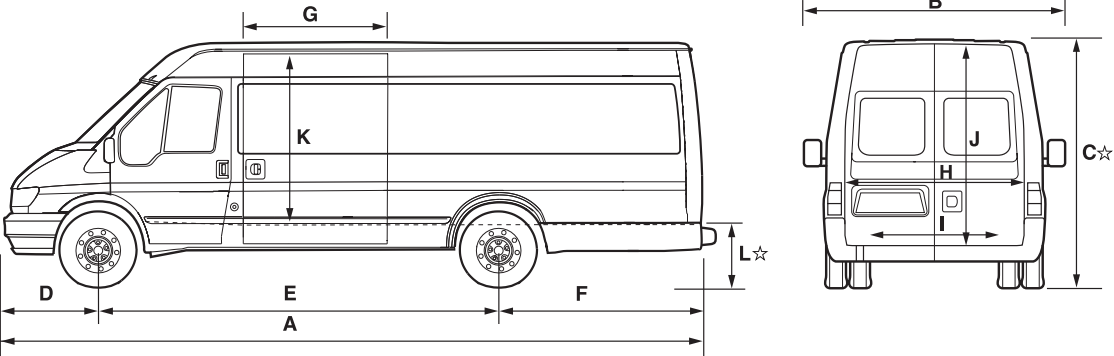
15-Seat Bus

Rear-Wheel Drive  
Dimensions (mm)  
A 5651  
B 2360/1974  
C 2315-2354  
D 904  
E 3750  
F 997  
G 690  
H 1540  
I 1390  
J 1566  
K 1465  
L 668 (unladen)  
L 576 (laden)



17-Seat Bus

Rear-Wheel Drive  
Dimensions (mm)  
A 6374  
B 2360/2084  
C 2340  
D 904  
E 3750  
F 1702  
G 690  
H 1540  
I 1153  
J 1566  
K 1465  
L 691 (unladen)  
L 615 (laden)



- All Minibuses**

**A** Overall length (excluding rear step)

**B** Overall width (with/without mirrors)

**C** Unladen height<sup>☆</sup>

**D** Front of vehicle to front wheel centre
- E** Wheelbase

**F** Rear of vehicle to rear wheel centre

**G** Side door entry width

**H** Rear door entry width
- I** Floorspace between wheel arches

**J** Rear door entry height

**K** Side door entry height

**L** Loading height<sup>☆</sup>

**Key:** All dimensions (shown in mm) are subject to manufacturing tolerances and refer to minimum specification models and do not include additional equipment. ☆ Height dimensions show the range from minimum to maximum of a fully laden, lowest payload vehicle to unladen highest payload vehicle. These illustrations are for guidance only.

Model availability

	Driveline	12-seat	15-seat	17-seat
<b>Ford Transit Minibus</b>				
2.0 Turbo Diesel Intercooled 74 kW (100 PS)	FWD	●		
2.4 Turbo Diesel Intercooled 66 kW (90 PS)	RWD		●	●
2.4 Turbo Diesel Intercooled 85 kW (115 PS)	RWD		●	● <sup>#</sup>
2.4 Turbo Diesel Intercooled 92 kW (125 PS) / Durashift EST automated shift manual transmission	RWD		●	
2.4 Turbo Diesel TDCi Intercooled 101 kW (137 PS)	RWD		●	● <sup>#</sup>
2.3 DOHC EFi 107 kW (145 PS)	RWD		●	

● = Standard. FWD = Front-Wheel Drive. RWD = Rear-Wheel Drive. <sup>#</sup>115 PS and 137 PS engines available from June 2004 production.



## Weights and loads

	Payload (gross) (kg)	Gross vehicle mass (kg)	Kerb mass (kg)	Front axle plated mass (kg)	Front axle kerb mass (kg)	Rear axle plated mass (kg)	Rear axle kerb mass (kg)	Axle ratio	Max. GTM (kg) with quoted axle ratio
<b>12-seat Minibus (300 MWB)</b>									
2.0 TD 100 PS	1070	3150	2080	1500	1165	1700	915	4.23	4000
2.0 TD 100 PS	1070	3150	2080	1500	1165	1700	915	4.54	4500
<b>15-seat Minibus (350 LWB)</b>									
2.4 TD 90 PS/115 PS	1190	3500	2310	1650	1236	2100	1074	4.63	4500/4750 <sup>††</sup>
2.4 TD 90 PS/115 PS	1190	3500	2310	1650	1236	2100	1074	5.13	5750 <sup>††</sup>
2.4 TD 125 PS Durashift EST auto	1181	3500	2319	1650	1242	2100	1077	4.63	4750 <sup>††</sup>
2.4 TD 125 PS Durashift EST auto	1181	3500	2319	1650	1242	2100	1077	5.13	5250 <sup>††</sup>
2.4 TD 137 PS	1175	3500	2325	1650	1246	2100	1079	3.77	5750 <sup>††</sup>
2.4 TD 137 PS	1175	3500	2325	1650	1246	2100	1079	4.27	6000 <sup>††</sup>
2.3 Petrol 145 PS	1190	3500	2310	1650	1236	2100	1074	5.13	5500
<b>17-seat Minibus (350 LWB EL)</b>									
2.4 TD 115 PS <sup>#</sup>	1510	4100	2590	1650	1215	2950	1375	4.63	4750
2.4 TD 90 PS/115 PS <sup>#</sup>	1510	4100	2590	1650	1215	2950	1375	5.13	5750
2.4 TD 137 PS <sup>#</sup>	1495	4100	2605	1650	1225	2950	1380	3.77	5750
2.4 TD 137 PS <sup>#</sup>	1495	4100	2605	1650	1225	2950	1380	4.27	6000

<sup>††</sup>GTM on 115 PS, 125 PS and 137 PS engines reduced to 4000 kg with optional rear air conditioning. <sup>#</sup>115 PS and 137 PS engines available from June 2004 production. **SWB** = Short wheelbase. **MWB** = Medium wheelbase. **LWB** = Long wheelbase. **Key: Payload** = Gross vehicle mass, less kerb mass. **GVM** = Gross vehicle mass. The total permissible all-up weight of a rigid vehicle – i.e. with body, payload, ancillaries, fuel, oil, water, driver and crew. **Kerb mass** = The weight of the complete vehicle and all equipment including fuel and water, but without payload, driver or any crew. All kerb masses quoted in this brochure are subject to manufacturing tolerances and are for vehicles with minimum equipment. **Plated mass** = The maximum weight allowed to be imposed on the axle (GVM must not be exceeded). **GTM** = Gross train mass. The total permissible all-up weight of a rigid vehicle (see GVM) together with its trailer and load.

## Engine data

	Engine technical features	Maximum power <sup>o</sup>	Maximum torque <sup>o</sup>
<b>2.0 Di Turbo Diesel Intercooled (EGR) 74 kW (100 PS)</b> 1998 cc	Cylinders – 4 in-line / 16 valves, 4 per cylinder / Turbocharged diesel with computer-controlled fuel injection / Intercooler / Compression ignition / Catalytic converter	74 kW (100 PS) at 4000 min <sup>-1</sup> (rpm)	250 Nm at 2000 min <sup>-1</sup> (rpm)
<b>2.4 Di Turbo Diesel Intercooled (EGR) 66 kW (90 PS)</b> 2402 cc	Cylinders – 4 in-line / 16 valves, 4 per cylinder / Turbocharged diesel with computer-controlled fuel injection / Intercooler / Compression ignition / Catalytic converter	66 kW (90 PS) at 4000 min <sup>-1</sup> (rpm)	220 Nm at 1800 min <sup>-1</sup> (rpm)
<b>2.4 Di Turbo Diesel Intercooled (EGR) 85 kW (115 PS)</b> 2402 cc	Cylinders – 4 in-line / 16 valves, 4 per cylinder / Turbocharged diesel with computer-controlled fuel injection / Intercooler / Compression ignition / Catalytic converter	85 kW (115 PS) at 3800 min <sup>-1</sup> (rpm)	285 Nm at 2300 min <sup>-1</sup> (rpm)
<b>2.4 Di Turbo Diesel Intercooled (EGR) 92 kW (125 PS)</b> 2402 cc	Cylinders – 4 in-line / 16 valves, 4 per cylinder / Turbocharged diesel with computer-controlled fuel injection / Intercooler / Compression ignition / Catalytic converter	92 kW (125 PS) at 3800 min <sup>-1</sup> (rpm)	285 Nm at 2300 min <sup>-1</sup> (rpm)
<b>2.4 Di Common-Rail Turbo Diesel Intercooled (EGR) 101 kW (137 PS)</b> 2402 cc	Cylinders – 4 in-line / 16 valves, 4 per cylinder / Turbocharged diesel with computer-controlled fuel injection / Intercooler / Compression ignition	101 kW (137 PS) at 3500 min <sup>-1</sup> (rpm)	375 Nm at 1900 min <sup>-1</sup> (rpm)
<b>2.3 DOHC EFi Petrol (EGR) 107 kW (145 PS)</b> 2295 cc	Cylinders – 4 in-line / 16 valves, 4 per cylinder / Electronic fuel injection with EEC V management system / Catalytic converter / Electronic breakerless ignition	107 kW (145 PS) at 5500 min <sup>-1</sup> (rpm)	200 Nm at 2500 min <sup>-1</sup> (rpm)

All models are 5-speed manual transmission except for 137 PS diesel which is 6-speed manual and the 125 PS diesel which is fitted with Durashift automated shift manual transmission. <sup>o</sup>Tested in accordance with ISO 1585. **EGR (Exhaust Gas Recirculation)** – A process whereby diesel engine exhaust is partially pumped back into the combustion cycle to reduce emissions.

## Mechanical features

	12-seat	15-seat	17-seat
<b>Engine</b>			
Road speed limiter (max. 70 mph) (diesel engines only) (not available on Durashift models)	○	○	○
<b>Brakes</b>			
Dual-circuit, with self-adjusting servo-assistance. Front discs and rear drums	●	●	●
Electronic anti-lock brakes (with electronic brake-force distribution)	●	●	●
Front brakes – Brake pad wear indicator	●	●	●
<b>Fuel tank</b>			
80 litres	●	●	●
<b>Steering</b>			
Power-assisted steering	●	●	●
<b>Suspension</b>			
Front, independent MacPherson struts, variable rate coil springs and gas-pressurised shock absorbers. Rear, leaf springs and gas-pressurised shock absorbers	●	●	●
Front – Anti-roll bar	●	●	●
<b>Transmission</b>			
Durashift EST automated shift manual transmission (only with 2.4 TDI 66 kW (90 PS) or 2.4 TDI 92 kW (125 PS) engines) – Gross Train Mass [GTM] is restricted with certain rear axle configurations – please consult your Ford Transit Specialist Dealer for details) (includes fitment of 6500 CD/radio with 'Keycode' anti-theft coding)		○	
<b>Axle ratios</b>			
Final drive ratio – 3.77 (Rear-Wheel Drive models with 137 PS engine only)		●	●
– 4.23 (Front-Wheel Drive vehicles only)	●		
– 4.27 (Rear-Wheel Drive models with 137 PS engine only)		●	●
– 4.54 (Front-Wheel Drive vehicles only)	●		
– 4.63 (Rear-Wheel Drive vehicles only)		●	●
– 5.13 (Rear-Wheel Drive vehicles only)		●	●
<b>Turning circle</b>			
Kerb to kerb – 11.9 m, wall to wall 12.5 m	●		
– 13.3 m, wall to wall 14.3 m (wall to wall figure excludes 17-seat Minibus)		●	●

## Safety and security

	12-seat	15-seat	17-seat
<b>Safety</b>			
Anti-lock brakes – Electronic (with electronic brake-force distribution) (mandates Traction Assist when specified with Durashift)	●	●	●
Traction Assist (includes anti-lock brakes) (Traction Assist is standard on 2.4 TDi 115 PS, 125 PS Durashift and 2.4 TDCi 137 PS powertrains). Traction Assist remains an option on 100 PS 12-seat bus	○	○	○
Airbag – Driver	●	●	●
– Outer front passenger*	●	●	●
Exterior mirrors – Enhanced rear vision	●	●	●
Seat belts – 3-point lap and diagonal inertia reel with grabbers (all front seats)	●	●	●
– 3-point lap and diagonal inertia reel with grabbers (all rear seats)	●	●	●
– Height-adjustable seat belt mount (driver only)	●	●	●
– Height-adjustable seat belt mount (outer front passenger)	●	●	●
<b>Security</b>			
Audio – 'Keycode' anti-theft coding	●	●	●
– Removable control panel	●	●	●
Alarm – Perimeter		○	○
Fuel cap – Locking	●	●	●
Immobiliser – 'Safeguard' Passive Anti-Theft System – (certified to Thatcham Category 2)	●	●	●
Locks – High security, lock-in-latch system, shielded with strengthened mountings	●	●	●
– Remote keyless entry central locking		●	●
– Manual locks	●		
– Key-operated bonnet release	●	●	●
Steering wheel – Torque slip, anti-theft	●	●	●
Vehicle Identification Number – Visible	●	●	●

\*Note: A child seat should never be placed in the front passenger seat when the Ford vehicle is equipped with an operational front passenger's airbag.

## Exterior features

	12-seat	15-seat	17-seat
<b>Exterior appearance and styling</b>			
Body – Medium roof	●	●	●
Bodyside mouldings	○	○	○
Bumpers – Full width, front and rear	●	●	●
Paint – Metallic	○	○	○
Tyres – Dunlop	○	○	○
– Goodyear (Mud and snow)	○	○	○
– Michelin (All-weather)	○	○	○
Wheels – 5½x15" steel wheels with centre hub covers and 195/70R 15C tyres (front-wheel drive vehicles only)	●		
– 5½x16" alloy wheels (steel spare) and 205/65R 16C tyres	○		
– 5½x16" steel wheels with centre hub covers and 215/75R 16C tyres (rear-wheel drive only)		●	
– 5x16" steel wheels, dual rear with centre hub covers and 185/75R 16C tyres (rear-wheel drive only)			●
– Partial wheelcovers	○	○	
<b>Exterior functional</b>			
Doors – Left-hand sliding side door (high/wide) (a step is only fitted to 15- and 17-seat Minibus)	●	●	●
– Right-hand sliding side door (high/wide)	●		
– Glazed rear doors (includes rear-view mirror) 180° opening, positive stop at 90°	●	●	●
Exterior mirrors – Power-operated and heated	●	●	●
Mudflaps – Front and rear	○	○	○
Rear step		●	●
Rear step – Integrated in bumper	○		
Rear parking distance sensor (includes integrated bumper step and power heated mirrors) (not available with optional tow bar or rear centre step)	○		
Towing eyes – Front and rear	●	●	●
Windows – Front, power-operated	●	●	●
– Heated rear	●	●	●
– 2nd row, right-hand side, fixed		○	○
– 2nd row, right-hand side, sliding	●	●	●
– 2nd row, left-hand side, fixed		○	○
– 2nd row, left-hand side, sliding	●	●	●
– 3rd row, left-hand and right-hand side, rear quarter, opening (fixed – 12-seat Minibus, hinged – 15- and 17-seat Minibus)	●	●	●
Glass – Clear windscreen/light tint passenger glass	●	●	
– Light tint windscreen/dark tint passenger glass	○	○	●
Windscreen – Laminated	●	●	●
– ‘Quickclear’ heated	○	○	○
Wipers – Front, two-speed with electric wash	●	●	●
– Twin rear, with electric wash (includes heated rear windows)	●	●	●
<b>Exterior lighting</b>			
Halogen headlights, side lights, rear fog lights, reversing lights	●	●	●
Front fog lights (includes 120 amp heavy-duty alternator on Rear-Wheel Drive diesel models)		○	○
Headlight levelling	●	●	●
High-mounted rear brake light	●	●	●

● = Standard, ○ = Option, at extra cost.

## Interior features

	12-seat	15-seat	17-seat
<b>Audio</b>			
Stereo radio/cassette – Model 4000 RDS, 'Keycode' anti-theft coding, removable control panel, 4 speakers	●	●	●
Stereo radio/CD – Model 6000 RDS, 'Keycode' anti-theft coding, removable control panel, 4 speakers	○	○	○
<b>Carpet and trim</b>			
Cab floor mat, rubber	●	●	●
Cab headlining – Moulded	●	●	●
Door trim – Front, moulded with pull handles and storage pockets	●	●	●
Rubber floor mat – Full length	●	●	●
Headlining – Moulded full length	●	●	●
<b>Interior lighting</b>			
Courtesy lights – Header-mounted, front door-operated with delayed switch-off	●	●	●
Passenger area light(s)	●	●	●
<b>Instruments and controls</b>			
Alternator (120 amp) (RWD diesel models only) (120 amp alternator is standard when optional front fog lights or air conditioning is ordered)		○	○
Battery – Twin	●	●	●
Cold start (Thermostart for –20°C starting)	●	●	●
Control stalks – Column-mounted for indicators and wash/wipe functions	●	●	●
Illuminated heater controls – 3-speed fan. Four vents with temperature and direction control, two dedicated side window demisters	●	●	●
Instruments – Speedometer, tachometer, odometer, fuel gauge, water temperature gauge, trip recorder	●	●	●
Tachograph – Electronic, 24-hour	○	○	○
Warning lights for oil pressure, direction indicator, main beam, lights on, ignition/alternator, brake failure, ABS, airbag(s), glow plugs, oil change, low fuel, traction control (where fitted)	●	●	●
<b>Seats</b>			
Seat trim – Fabric	●	●	●
Seats – Fabric trim; driver's 6-way manual adjustment with armrests; dual fixed passengers' seat; height-adjustable head restraints	●	●	●
– Fabric trim; driver's 6-way manual adjustment with armrests; single passenger's 4-way manual adjust seat with armrests; height-adjustable head restraints	○		
– Fabric trim; driver's heated, 8-way manual adjustment with armrests; dual fixed passengers' seat; height-adjustable head restraints	○	○	○
Second row – Dual narrow seat			●
– Triple narrow seat	●	●	
Third row – Single/double seat	●	●	●
Fourth row – Single/double seat		●	●
– Triple narrow seat	●		
Fifth row – Single/double seat		●	●
Sixth row – Single/double seat			●
Seat belts – Height-adjustable mount, driver's side	●	●	●
– Height-adjustable mount, outer front passenger	●	●	●
<b>Comfort and convenience</b>			
Accessory socket 12V	○	○	○
Air conditioning – Front, CFC-free (includes tinted glass) (on RWD diesel models includes heavy-duty 120 amp alternator)	○	○	○
– Rear, CFC-free (includes tinted glass) (only available with front air conditioning)	○	○	
Rear compartment heating (not available with rear air conditioning) (includes 120 amp heavy-duty alternator on 15-seat Minibus – diesel only)	○	○	
Clock – Digital	●	●	●
Cup holder – Twin, facia-mounted, drop-down	●	●	●
Glovebox – With lid	●	●	●
Heater – Recirculation	●	●	●
Smokers' Pack – Cigar lighter and ashtray	○	○	○

## Interior features

	12-seat	15-seat	17-seat
<b>Comfort and convenience (continued)</b>			
Storage – Front door pockets	●	●	●
– Facia-mounted on passenger's side, with cup holder	●	●	●
– Centre facia-mounted document holder, with integral cover	●	●	●
– Facia-mounted stowage slot	●	●	●
Sunvisors – Two, swivelling	●	●	●

● = Standard, ○ = Option, at extra cost.

**1986 Construction and Use Regulations (Schedule 6 and 7)** Transit bus models, over 9-seats, are equipped to meet 1986 Construction and Use Regulations (Schedule 6 and 7) and are certified for PSV application in England, Scotland and Wales. Additional equipment includes: 'A' pillar passenger grab handle; Front passenger doorstep illumination; Side load door with passenger assist grab handle; Side and rear doorstep illumination; Seating capacity decals; Fire extinguisher; First Aid Kit plus location decals; Emergency exit and door operation decals, and passenger carrying capacity decals.

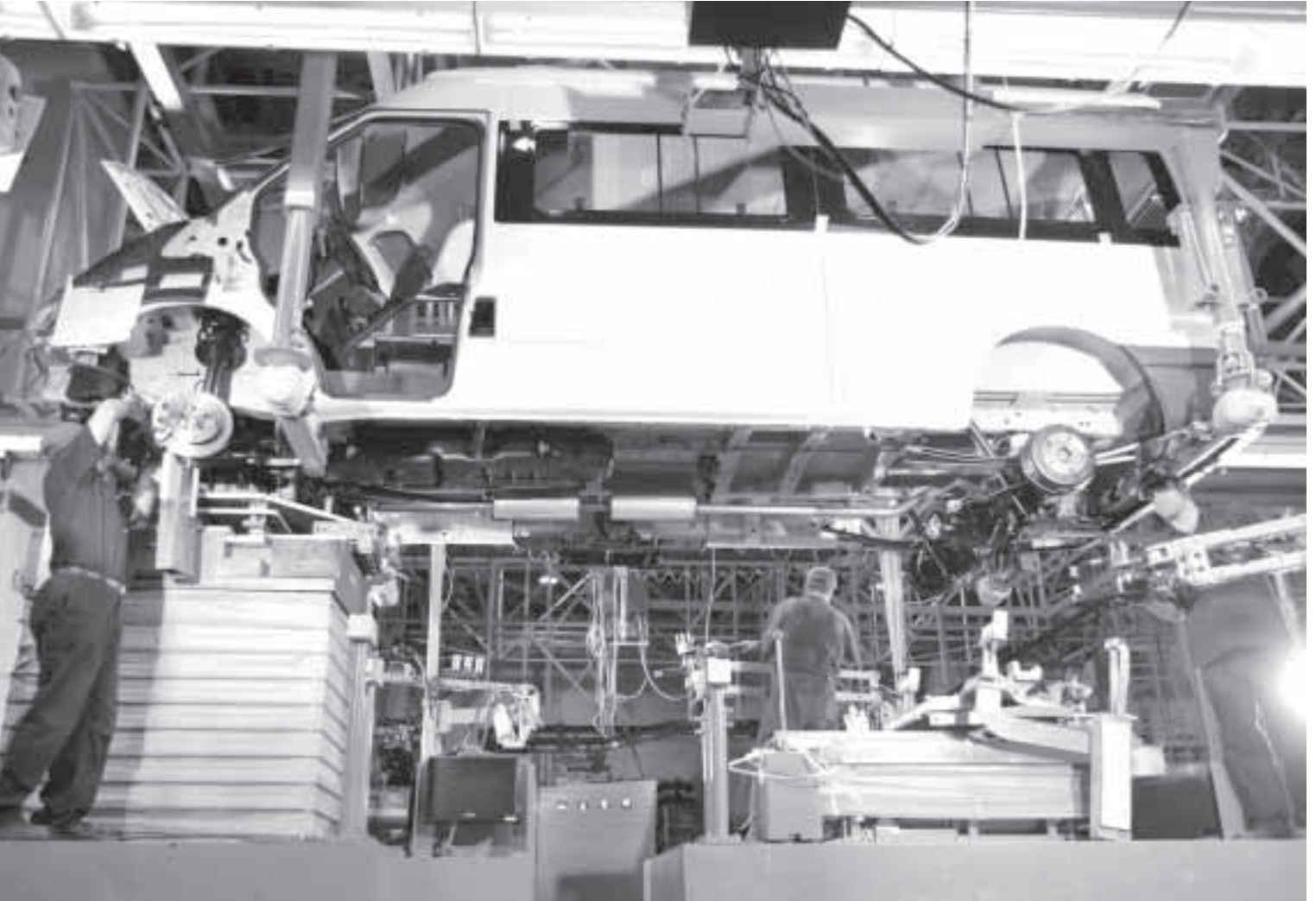
## Notes





## The most important vehicle is the one we build for you

When you are looking for a modern, value-for-money people mover, trust Ford to deliver the right vehicle for you.



As a group transport operator, you want a vehicle that is tough enough to take every challenge that comes its way. That's why we engineered the Ford People Movers range. Drawing on over three decades of invaluable Transit development experience, every model delivers the durability and reliability you demand. Plus passenger-carrying comfort and outstanding equipment levels.

Ford People Movers set the benchmark for toughness. Built from the ground up to meet your needs, they are assembled in some of the most modern manufacturing facilities in Europe. At every plant, two important factors combine to create your vehicle: the commitment and skill of each member of the production team, and the latest in precision engineering and fail-safe quality control. Together, they reflect our pride in the Ford People Movers range.



## Ford Cares

Ford not only cares through Dealers, we also offer a variety of finance and leasing schemes to suit the purchasing needs of both the private and business buyer. With our wide choice of plans and services no one is more committed to delivering complete motoring confidence and total peace of mind than Ford.

### FordCredit

#### Ford Business Partner

Ford Business Partner is a specialist division of Ford Credit dedicated to partnering businesses. We work with you to achieve a complete transport solution across the whole Ford range.

#### Contract hire

Contract hire is the sure way of keeping a full quota of vehicles on the road every day, while keeping budget payments 100% predictable. With a fixed monthly rental, you have total budgetary control.

#### Purchase Plan

You put down a deposit. You then pay the remainder, plus interest, over an agreed period – at the end of this period, provided there are no outstanding payments, you own the vehicle.

#### Lease Plan

Your payments cover the use of the vehicle. Once all the payments have been received, you can sell the vehicle as our agent and we will return the sale proceeds (less any monies owed to us) as a rebate of rentals.

#### Personal Contract Purchase

Personal Contract Purchase is the flexible way to finance your Ford. If you are looking to renew your vehicle more often, this is the ideal plan. At the end of the agreement choose which option suits you best – own the vehicle, return it or choose a new one.

#### Ford Insure

Ford Insure offers a wide range of great value products for you and your Ford including Comprehensive Motor Insurance, Payment Protection Plan\* and Guaranteed Asset Protection\*. When you purchase a Ford from a Ford dealer, you will receive 7 days Driveaway cover\*\* free when you call Ford Insure for a no-obligation annual quotation.

### Services

#### Ford Protect

Every new Ford Tourneo, Ford Transit Minibus and Ford Tourneo Connect is protected by a 3-year/100,000-mile bumper-to-bumper warranty.

Upgrades are also available, giving you the option of worry-free motoring for up to 5 years.

#### Ford Perforation Warranty

All new Ford People Movers are covered by the Ford Perforation Warranty for 6 years\*\*\* from the date of first registration.

#### RAC cover

All Ford People Movers are supplied with a comprehensive 3 years' RAC package, including Roadside Assistance.

Additionally for Ford Tourneo and Ford Transit Minibus, if the fault cannot be rectified:

- **Commercial vehicle replacement** – A replacement vehicle will be provided for 24 hours (subject to status), although an exact replacement may not be available
- **Load continuation** – This service provides an additional destination. Your vehicle will be taken to one destination (UK mainland) probably to unload, then to another to be repaired
- **Link and chase** – If your Ford Tourneo or Ford Transit Minibus cannot be fixed at the roadside, a Personal Incident Manager will communicate between the driver and load destination to ensure that the needs are fulfilled

#### Ford Accident Repair Centres

If your Ford is involved in an accident, your Ford Dealer is best placed to return it to its pre-accident condition. Dealerships displaying the Ford Accident Repair Centre sign all meet the rigorous customer service and repair quality standards laid down by Ford, and offer a 3-year workmanship guarantee.

#### For more information

To find the location of your nearest Ford Transit Specialist Dealer, simply call the Ford Information Service on **0845 7111 888**, or visit the Ford Dealer locator at **www.fordvans.co.uk**

\*\*\*Subject to terms and conditions.

**For further details on Ford Credit Services, please contact your local Ford Dealer or [www.ford.co.uk](http://www.ford.co.uk)**

Business Users only. Finance subject to status and conditions, to over 18s only. Guarantees/Indemnities may be required. Written quotations available on request: Freepost Ford Credit. Correct at time of going to print. Contact your Dealer for terms and conditions. Ford Insure is underwritten by Norwich Union Insurance Limited, registered in England No. 99122. Member of the General Insurance Standards Council. Registered office at 8 Surrey Street, Norwich NR1 3NG. \*Guaranteed Asset Protection policy is underwritten by AXA Insurance UK plc, registered in England No. 78950. AXA Insurance UK plc is a member of the AXA Group of Companies and a member of the General Insurance Standards Council. Registered office 107 Cheapside, London EC2V 6DU. Please refer to Payment Protection policy booklet for full details of benefits and exclusions. \*\*Excesses apply. Please refer to Summary of Cover for details. Maximum 5 vehicles. Not available in conjunction with any other promotion.



[www.fordvans.co.uk/people movers](http://www.fordvans.co.uk/people movers)

Dealer

Published by Commercial Vehicle Marketing,  
Ford Motor Company Limited,  
Brentwood, Essex, England.  
Registered in England No. 235446.  
**FA 1478.**  
BJN 19341.  
PN 477503/0403/24m/GB.  
March 2004.  
© Ford Motor Company Limited.

**Illustrations, descriptions and specifications.** This catalogue was correct at the time of going to print. However, Ford policy is one of continuous product development. The right is reserved to change specifications, colours and prices of the models and items illustrated and described in this publication at any time. For the latest details always consult your Ford Transit Specialist Dealer. **Optional equipment.** Throughout this publication, wherever a feature is described as being an 'Option' or 'Optional Fitment/Pack', etc., you should assume that it will be at extra cost to the base vehicle, unless specifically stated to the contrary. All models and colour combinations are subject to availability.

