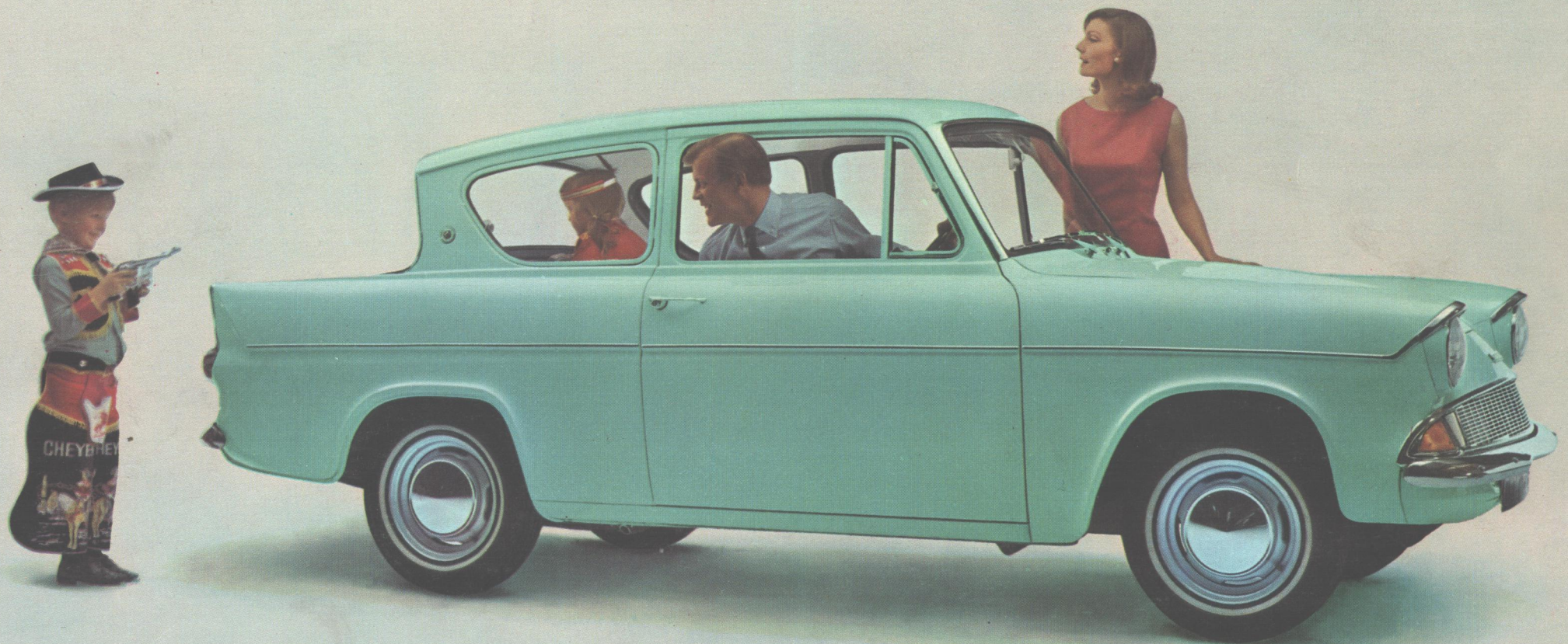


Anglia
a real car for
your money



Here's real car popularity-there are now 1,000,000 Anglia owners!

This is why

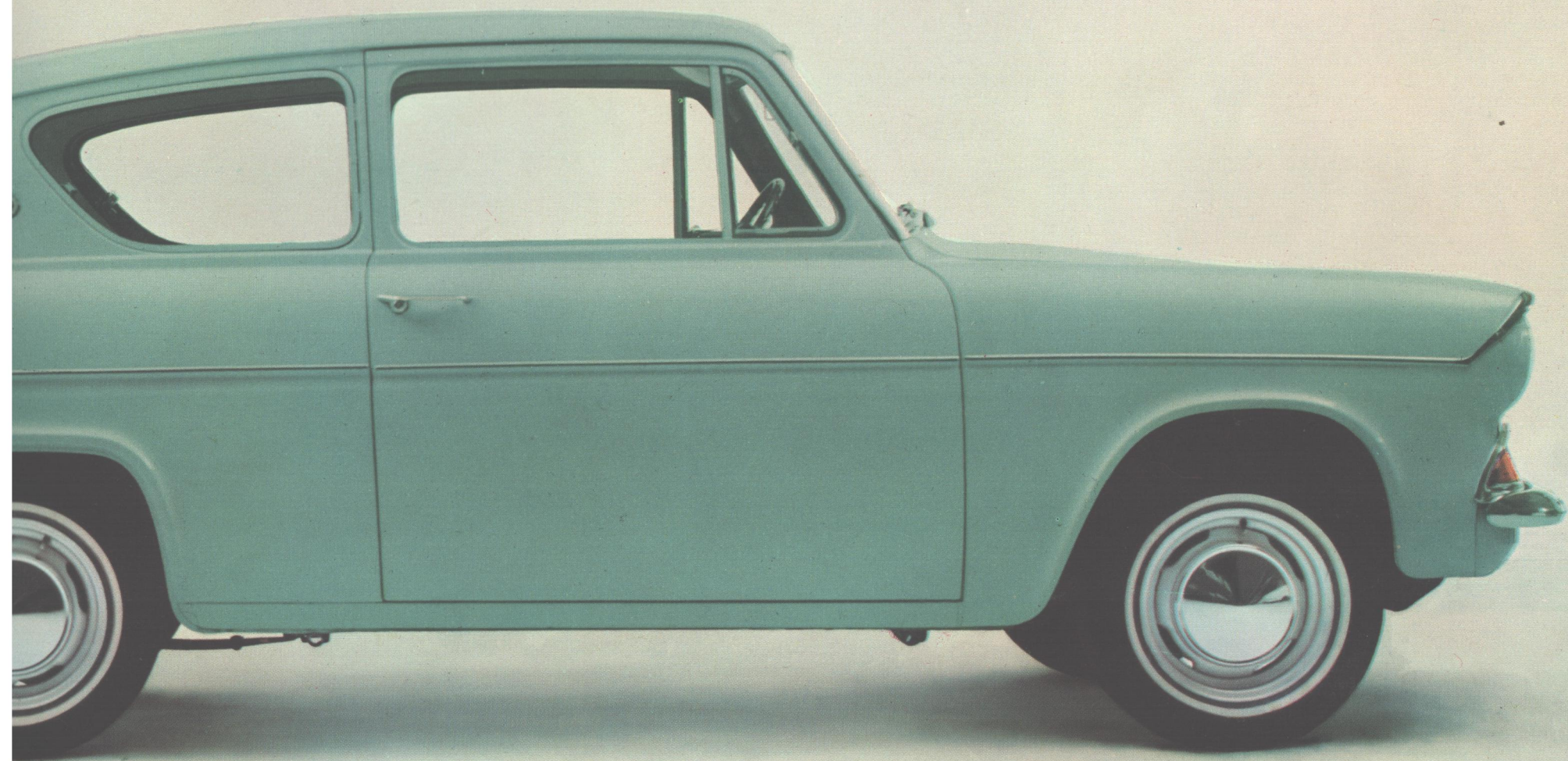
For them the performance of a reliable engine, race and rally proved over many thousands of miles.

For them the security of a car that handles well in all conditions, that has quick acceleration and powerful brakes. They feel at home in their Anglia's well appointed interior. The well padded seats give both driver and passengers a high degree of comfort.

A full four seater, the Anglia provides ample leg and head room for four adults. They have plenty of room to stretch! They know that when it comes to carrying luggage, the Anglia's spacious boot can accommodate enough for the whole family.

Every one of a million Anglia owners knows that his car gives him full value for money: running costs are low, 2,500 miles between services. When *you* consider the Anglia and what it offers for *your* money, then you know why one million car owners continue to drive the best car in its class – the Anglia.







Load up! The Versatile Anglia Estate gives real carrying capacity

A total load space of 39·0 cubic feet

This handsome Estate car is built to take *really* bulky loads. With the rear seat folded down, the load space is 39·0 cubic feet. And even with four people sitting at ease, you still have a luggage capacity of 18·2 cubic feet.

More
Total
(Com
wheel
runnin
goods



nd figures :
 space length is 4 feet 6 inches.
 flat uninterrupted floor – the spare
 neatly away *below* floor.) Metal
 s and tough floor covering protect
 make loading simple.





Anglia super — a real driver's car from bumper to bumper

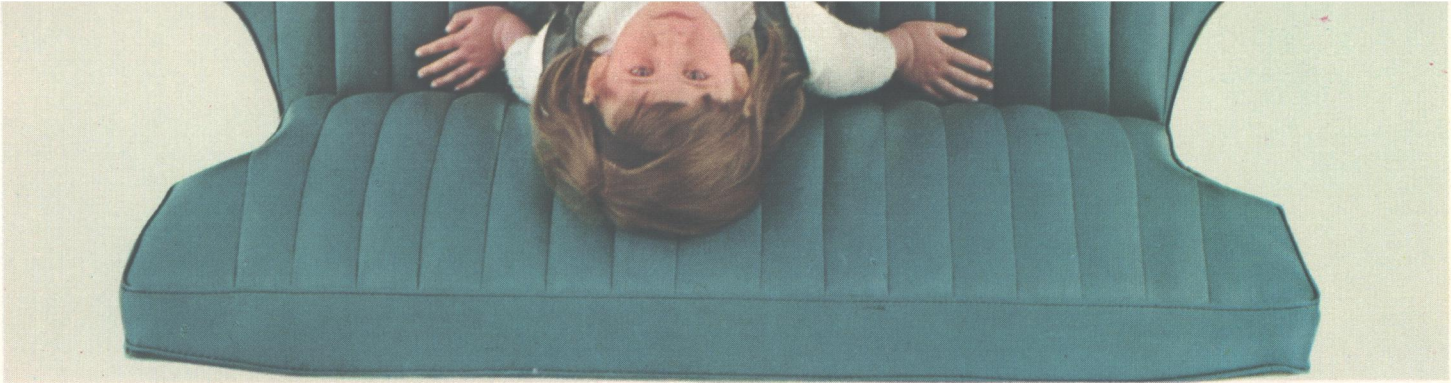
If you take pleasure in your driving, it won't take you long to appreciate the extra liveliness and sporting 'feel' of the Anglia Super. The 1,200 cc 54 b.h.p. engine sweeps you up to 50 m.p.h. in 13.7 seconds; to 60 m.p.h. in 20.8 seconds. The all synchromesh gearbox allows you to tackle heavy town traffic without worry.

You can identify the Anglia Super by the matching roof and side flash in a contrasting

second colour and by the trim. *Inside* you get a lot of comfort and finish. High back seats, more deeply upholstered facia, rear armrests, assisted door, and snug fitting curled-up Heater, cigar lighter and washers are fitted as standard.



Anglia gives you real car comfort



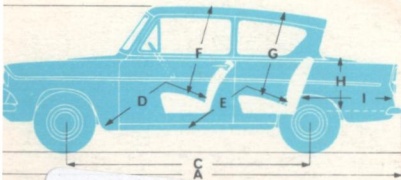
It is a genuinely roomy car. Even the most long-legged passenger can stretch out in both front and rear seats. The wide opening door, seating for four and generous headroom make it easy to get in and out without resorting to acrobatics.

This is what 11 ½ cubic feet of luggage space looks like! More expensive cars than the Anglia are far less lavish with room for the family's luggage. What will the Anglia boot hold? All the luggage you see here – and room for a few small parcels besides!

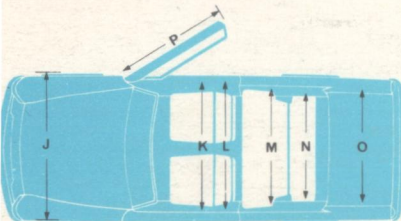


nt metal wheel
is standard of
include even
seats, padded
s, coat hooks
rpet throughout.
screen
equipment.

ANGLIA SALOON



0081



A	Length	12' 9 1/2"
B	Height (unladen)	4' 8 1/2"
C	Wheelbase	7' 6 1/2"
D	Leg room front	3' 1 1/2"
E	Leg room rear	2' 10 1/2"
F	Head room front	3' 1 1/2"
G	Head room rear	3' 1"
H	Boot height	1' 6 3/4"
J	Boot length	2' 6 1/2"
K	Width	4' 9"
L	Hip room front	4' 2 1/2"
M	Shoulder room front	3' 8 3/4"
N	Hip room rear	3' 7"
O	Shoulder room rear	3' 7 1/4"
D	Boot width	4' 6"
P	Door width	3' 5 1/2"

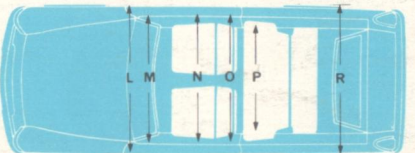
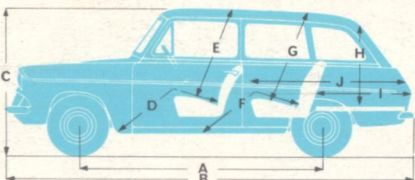
Engine: Bore 3.187" (80.96 mm). Stroke 1.906" (48.4 mm). Capacity 60.84 cu in (997 cc). Compression ratio 8.9:1. B.H.P. 41 at 5000 rpm (gross). Torque 55.5 lb ft at 2700 rpm (gross). 4-cyl.
Lubrication: full-flow filter. Capacity of system, 5 1/2 pints.
Fuel System: Mechanical diaphragm pump. Downdraught carburettor with accelerator pump. 7 gallon tank.
Transmission 4-speed, with synchromesh on 2nd, 3rd and top. Overall ratios: 1st, 18.300:1, 2nd, 10.648:1, 3rd, 6.275:1, Top, 4.444:1, Reverse, 24.015:1.

Rear Axle: Semi-floating. Hypoid final drive. Standard ratio 4.444:1. Optional ratio 4.125:1.
Suspension: Front: Independent strut type, with anti-roll bar embodied. Rear: Asymmetrical semi-elliptic springs.
Brakes: Drum type. 8" diameter. Total lining area, 76.8 sq in.
Steering: Recirculatory ball. Ratio 14:1. Turning circle, 32 ft.
Wheels and Tyres: Pressed steel with wide base rims. Tyres, 5.20-13, 4 ply rating tubeless.
Battery: 12 v 32 amp hr at 20 hr rate. Compensated voltage control.
Body: All steel welded integral. Zone-toughened windscreen. Safety glass all round. Hinged front 1/4 vents. Wind down door windows. Exterior lock on boot lid and driver's door. Separate front seats. PVC upholstery and headlining. Glove box. Full width parcel tray. Boot capacity 11.5 cu ft. Spare wheel located vertically at rear of boot.
General Equipment: Electric wipers. Self-cancelling flashers. Sun visor. Interior rear view mirror. Facia ashtray. Full-width bumpers.
Extra for de Luxe: Additional ornamentation. Full-width radiator grill. Opening rear 1/4 windows. Passenger sun visor. Combined courtesy and interior light. 2 rear ashtrays. Coloured floor covering. Glove compartment lid. Temperature gauge. Oil-pressure and main beam warning light. Screen washer. Heater and demister.
Instruments: Grouped in panel in front of driver. Speedometer, odometer, fuel gauge, ignition warning light. Direction indicator lights.
Controls: Choke, wiper, key starter/ignition, instruments/side/headlamps. Hand operated dipper and direction indicator.
Optional Extras: White side-wall tyres on de Luxe.

ANGLIA SUPER

Engine: 4-cyl. Bore 3.1872" (80.96 mm). Stroke 2.29" (58.17 mm). Capacity 73.11 cu in (1198 cc). Compression ratio 9.1:1. B.H.P. 54 at 4900 rpm (gross). Torque 69 lb ft at 2700 rpm (gross).
Lubrication: Full flow filter. Capacity of system, 5 1/2 pints.
Fuel System: Mechanical diaphragm pump. Downdraught carburettor with accelerator pump. 7 gallon tank.
Transmission: 4-speed, all synchromesh. Floor shift. Overall ratios: 1st, 14.615:1, 2nd, 9.884:1, 3rd, 5.825:1, Top, 4.125:1, Reverse, 16.347:1.
Rear Axle: Semi-floating, hypoid final drive. Standard ratio 4.125:1. Optional ratio, 4.44:1.
Suspension: Front: Independent strut type, with anti-roll bar embodied. Rear: Asymmetrical semi-elliptic springs.
Brakes: Drum type. 8" diameter. Total lining area 81.68 sq in.
Steering: Recirculatory ball. Ratio 14:1. Turning circle 32 ft.
Wheels and Tyres: Pressed steel with wide base rims. Tyres, 5.20-13, 4 ply tubeless.
Battery: 12 v 32 amp hr at 20 hr rate. Compensated voltage control.
Body: All steel welded integral. Press button door handles. Exterior lock on driver's door and boot lid. Specially shaped bucket front seats. Fitted carpet. Boot capacity 11 1/2 cu ft. Spare wheel mounted vertically at rear of boot. Boot mat.
General Equipment: Electric wipers. Twin sun visors. Vanity mirror. One front, two rear ashtrays. Cigar lighter. Glove compartment lid. Full width parcel tray. Padded facia. Padded armrests. Combined assist straps and coathooks. Fresh air heater and demister. Screen washer.
Instruments: Grouped in panel in front of driver. Speedometer. Odometer. Fuel gauge. Warning lights. Temperature gauge.
Controls: Choke. Wiper/washer. Key ignition/starter switch. Hand dipper. Self-cancelling flasher. Light switch.
Optional Extra: White side-wall tyres.

ANGLIA ESTATE CAR



A	Wheelbase	7' 6 1/2"
B	Length	12' 10 1/4"
C	Height	4' 9 1/2"
D	Leg room front	3' 1 1/2"
E	Head room front	3' 2"
F	Leg room rear	2' 11"
G	Head room rear	3' 1 1/2"
H	Vertical door opening	2' 6 1/2"
I	Load length as four seater	2' 10 1/4"
J	Load length as two seater	4' 6"
L	Width	4' 9 1/4"
M	Hip room front	4' 2"
N	Shoulder room front	3' 8 3/4"
O	Hip room rear	4' 0"
P	Shoulder room rear	3' 8"
R	Floor width	3' 11 1/2"

Engine: Bore 3.187" (80.96 mm). Stroke 1.906" (48.4 mm). Capacity 60.84 cu in (997 cc). Compression ratio 8.9:1. B.H.P. 41 at 5000 rpm (gross). Torque 55.5 lb ft at 2700 rpm (gross). 4-cyl.
1198 cc engine de Luxe optional extra.
4-cyl. Bore 3.187" (80.96 mm). Stroke 2.29" (58.17 mm). Capacity 73.11 cu in (1198 cc). Compression ratio 9.1:1. B.H.P. 54 at 4900 rpm (gross). Torque 69 lb ft at 2700 rpm (gross).

Gearbox: 4-speed, with synchro. on 3 forward gears with 997 cc engine, 4 with 1198 cc engine. Overall ratios with 997 cc engine: 1st, 18.3:1, 2nd, 10.64:1, 3rd, 6.27:1, Top, 4.44:1, Reverse, 24.0:1. Floor gear change. Single dry plate clutch.
Rear Axle: Semi-floating. Hypoid final drive. Ratio 4.44:1.
Suspension: Front: Independent strut type, with anti-roll bar embodied. Rear: Asymmetrical semi-elliptic springs.
Brakes: Drum type. 8" diameter. Total lining area 76.8 sq in (997 cc engine).
Steering: Recirculatory ball. Ratio 14:1. Turning circle 32 ft.
Wheels and Tyres: Pressed steel with wide base rims. Tyres, 5.60-13, 6 ply tubeless.
Battery: 12 v 32 amp hr at 20 hr rate. Compensated voltage control.
Body: All steel welded integral. Safety glass all round. Zone-toughened windscreen. Hinged front 1/4 vents. Wind down door windows. Exterior lock on tail gate and driver's door. Separate front seats. PVC upholstery and headlining. Glove box, full width parcel tray. Luggage capacity 39.0 cu ft with rear seat folded, 18.2 cu ft with rear seat up. Spare wheel beneath trap door in floor.
General Equipment: Electric wipers. Self-cancelling flashers. Sun visor. Interior and exterior rear view mirrors. Facia ashtray.
Extra for de Luxe: Additional ornamentation. Opening rear 1/4 windows. Passenger sun visor. Combined courtesy and interior light. Linoleum rear floor. Glove compartment lid. Temperature gauge. Oil-pressure and main beam warning light. Screen washer. Heater and demister.
Instruments: Grouped in panel in front of driver. Speedometer, odometer, fuel gauge, ignition warning light. Direction indicator light.
Controls: Choke, wiper, key starter/ignition, instruments/side/headlamps. Hand operated dipper.
Optional Extras: White side-wall tyres on de Luxe. 2-tone paint. 1198 cc engine with all synchromesh gearbox and larger brakes.

