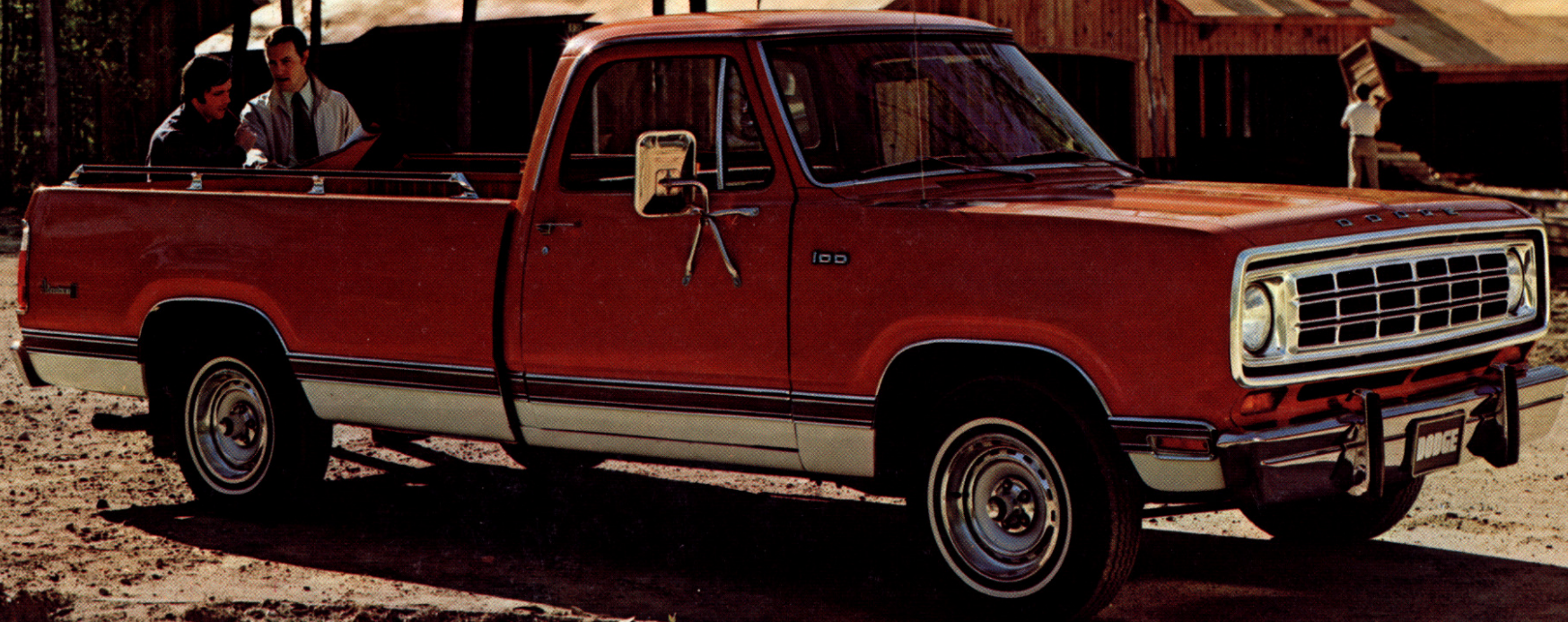


1975 DODGE PICKUP MODELS

INCLUDING FOUR-WHEEL DRIVE



DODGE OFFERS ALL THREE...CONVENTIONAL CAB, CLUB CAB, AND CREW CAB.

Dodge pickup trucks have always had a reputation for dependability and longevity. And today, these characteristics have become more and more important to the discriminating truck buyer. He's going to give long and careful consideration to what each make and model has to offer, and Dodge welcomes this because Dodge has what he's looking for.

As the innovator in offering three types of cabs—a Conventional Cab, Club Cab, and Crew Cab—Dodge has a truck to suit every need. Each and every one is built to keep operating costs to a minimum. Dodge pickups have many things that make them the best pickup truck buys. ELECTRONIC TESTING of engines and engine parts to be sure they function properly before the truck leaves the plant. The ELECTRONIC IGNITION SYSTEM, standard on all Dodge pickup trucks, has no points or condenser. This means service on these components is eliminated. A solid-state VOLTAGE REGULATOR has no moving parts to go out of adjustment. Dependability is also found in the Dodge Truck transmission. The LoadFlite AUTOMATIC TRANSMISSION has been constantly refined and improved to the point where we feel it is one of the best on the road today. These are the things that help make a Dodge truck dependable and long lasting.



DODGE CLUB CAB.

This popular model offers 34 cubic feet of space behind the front seat that can be used for cargo or passengers. Two optional jump seats can be folded down to increase the seating capacity of your Club Cab to five. This versatility makes it attractive to owners who want to use their pickups for work and also as a recreational vehicle. Shown above is a D100 Club Cab with the Adventurer SE package. Colors are light gold and medium gold metallic. Optional equipment is radio, wheel covers, white sidewall tires, rear bumper, front bumper guards, and sliding rear window.

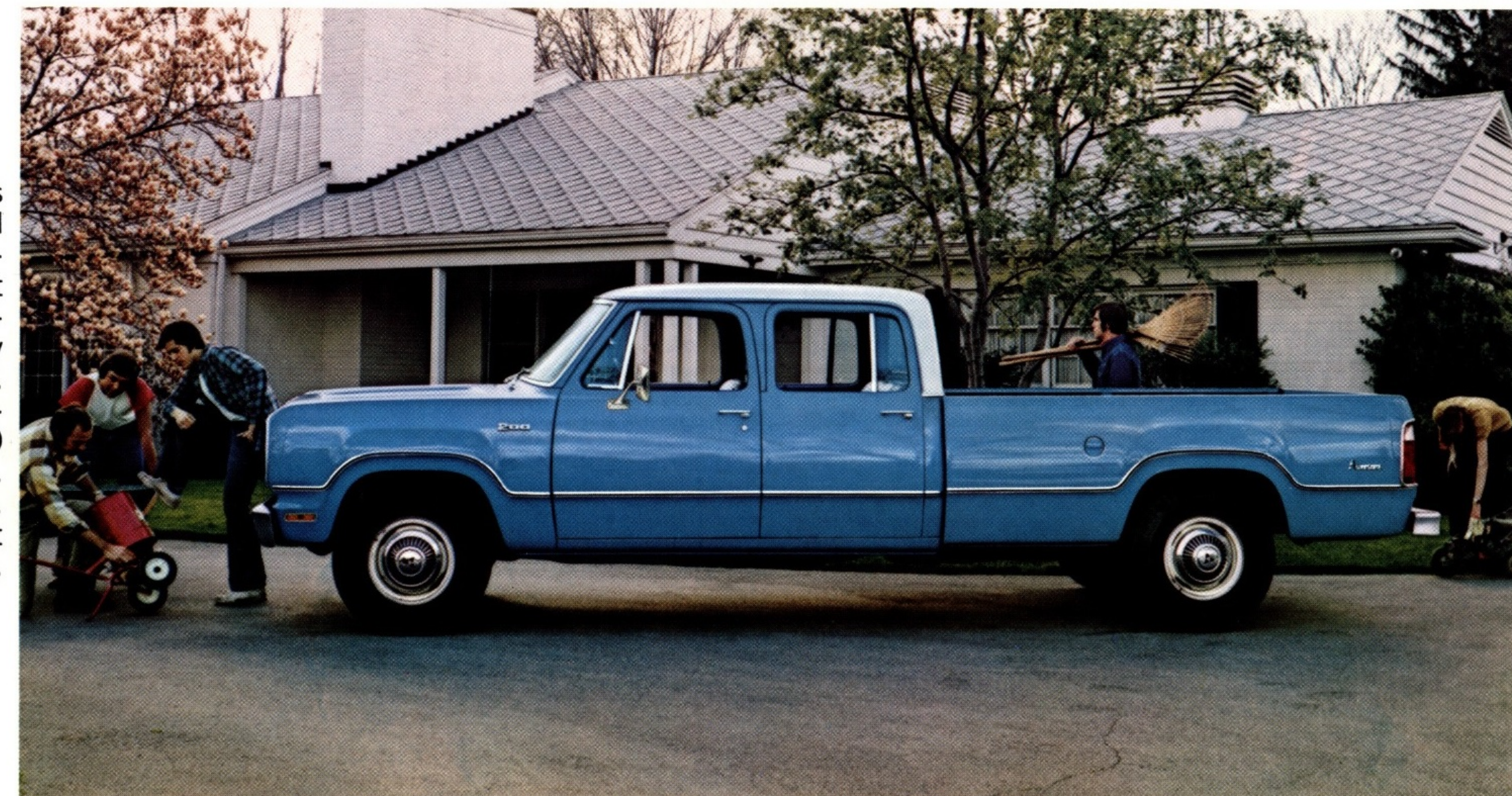
DODGE CONVENTIONAL CAB.

For the man who uses a pickup in his daily work, the Dodge Conventional Cab will get the job done. Along with its neat, smooth styling, it is engineered for dependability and minimum maintenance requirements. This is a D100 Conventional Cab with the Adventurer Sport package. Colors are dark green metallic and white. Optional equipment shown is radio, wheel covers, white sidewall tires, and rear bumper. You're invited to look over the following pages for additional information.



DODGE CREW CAB.

Like the Dodge Club Cab, the Crew Cab is chosen for its extra seating capacity as well as its durability and dependability. It features four doors and a full-width rear seat that enables you to carry six people in comfort. This pickup is widely used by utility companies to carry work crews to the job site. Large families choose it and use it for week-end camping and travel. This is a D200 Crew Cab with the Adventurer package. Colors are medium blue metallic and white. Optional equipment shown is radio, bright hubcaps, rear bumper, and in-cab fuel tank.



COMFORT AND CONVENIENCE FEATURES—ALL STANDARD

DODGE CONVENTIONAL CAB.

This is the most popular pickup Dodge builds, and it offers a wide selection of equipment packages to let you dress up your truck to suit your personal needs. Shown here is the D100 model with the Adventurer SE package. Other packages available on the Dodge Conventional pickup are the Adventurer Sport, Adventurer, and Custom. The D100 offers a six-and-one-half-foot box on a 115-inch wheelbase with an overall length of 190.2 inches. It is also available with an eight-foot box on a 131-inch wheelbase and an overall length of 210.2 inches. The D200 comes on a 131-inch wheelbase with an eight-foot box and an overall length of 210.2 inches. 1975 Dodge pickup trucks are available with four-wheel drive. Four-wheel drive should be considered if your job or camping trips take you off the highway and into rugged terrain. The exterior and interior selections for the Conventional Cab can be found on pages 10 and 11 farther back in this catalog. Optional equipment shown is radio, full-disc wheel covers, bright-finish rear bumper, and white sidewall tires. Colors are bronze metallic and white.

TWO-TONE PAINT OPTIONS
There are three two-tone paint options on Dodge pickups for 1975. (1) On all models, you can get the main color from the cab window sill down, a secondary color from this line up. (2) On Sweptline models only, you can get the main color on top, the secondary color on the bottom. (3) On Sweptline models only, you can get the main color in the middle with the secondary color on top and bottom.

EASY ENGINE ACCESSIBILITY
The large hood opening enables you to make adjustments and minor repairs yourself, quickly and simply. All parts most frequently worked on are located within easy reach.

DISC BRAKES
Powerful, fade-resistant front disc brakes are standard equipment. Rear brakes are drum-type.

TWO-STAGE FRONT DOOR CHECK
This feature keeps door from closing on you as you leave and enter front compartment.

DOUBLE-WALL CONSTRUCTION
From front to rear, top to bottom, the Dodge pickup has double-wall construction to give added strength to cab and box.

EFFORTLESS FUSE CHANGE
In the event that it is necessary to change a fuse, a turn-signal flasher unit, or an emergency flasher unit, all you do is open the glove box, and there it is—right in plain sight and easy to reach. No standing on your head to get at fuses under the dash.

SWEPTLINE BOX CONSTRUCTION
Box inner panels are ribbed for greater rigidity, and all bed bolts of the heavy steel bed are out of sight for easier loading and unloading. No long coach joints that tend to rust are used.

FLAT-TOP REAR WHEELHOUSINGS
The wheel housings of the Dodge Sweptline pickup box have flat tops and straight sides to make it easier to put flat objects alongside.

GAS TANK LOCATED OUTSIDE THE CAB
The 22-gallon-capacity gas tank is located outside of the cab on pickup models (except the W100 model on a 115-inch wheelbase). Two fuel fillers are on models equipped with main and auxiliary fuel tanks.

ONE-HAND TAILGATE OPERATION
The tailgate release is located high on the tailgate to make it easy and simple to release the latch and lower the tailgate with one hand. A real convenience when you are carrying a package or object you don't want to set down in order to open the tailgate.

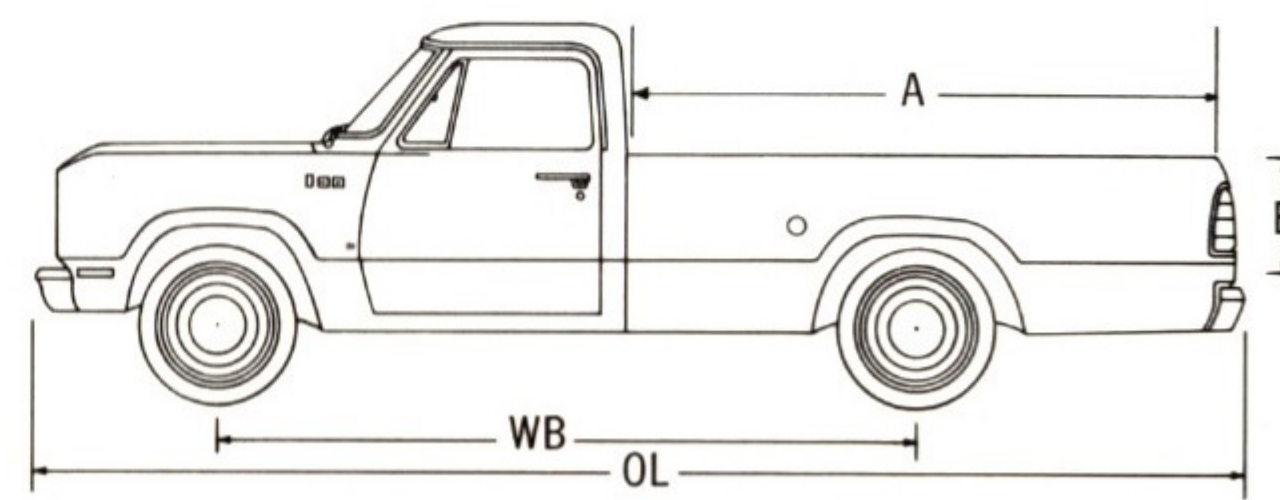
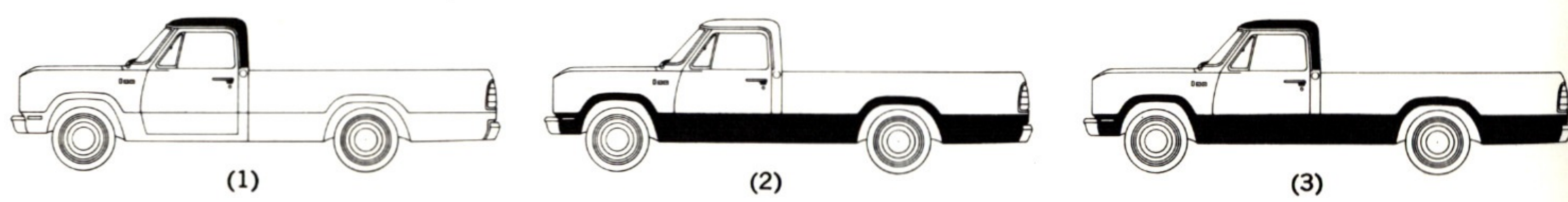
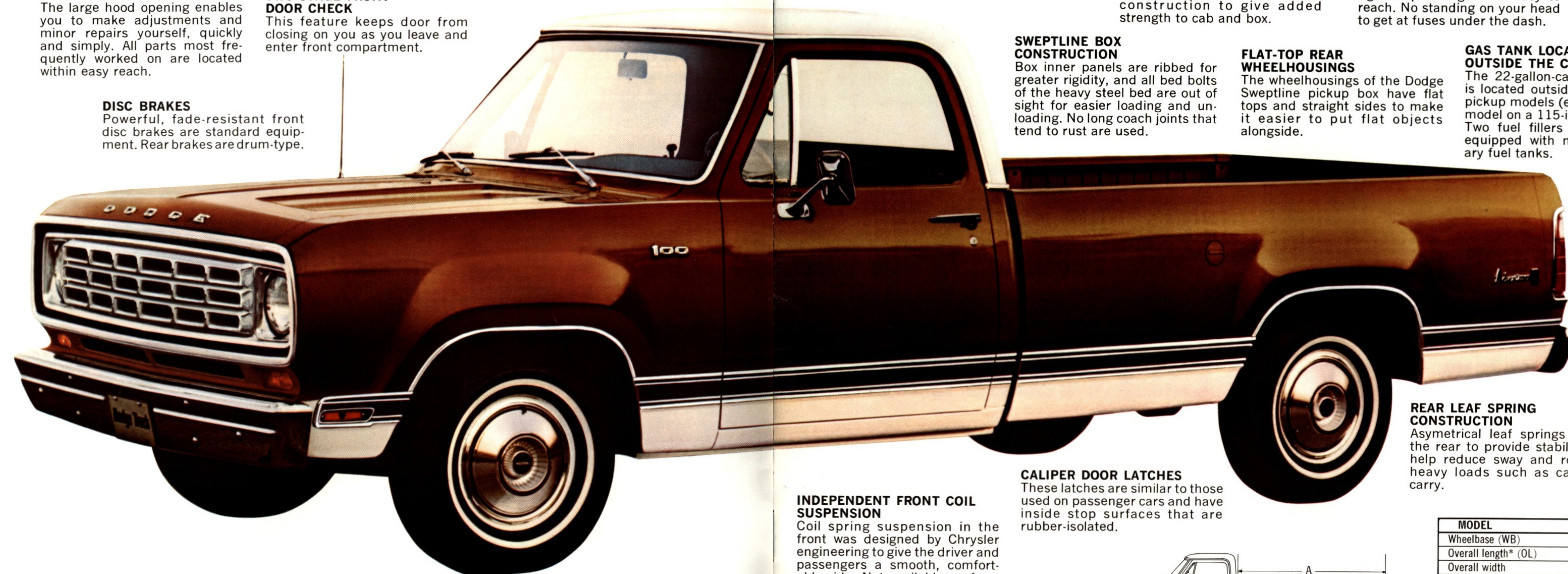
NO HOLES IN FLOOR PAN
Road noise is reduced in the cab area because there are no holes in the floor pan to let noise in. There is also a layer of jute insulation between the floor mat and the floor pan.

REAR LEAF SPRING CONSTRUCTION
Asymmetrical leaf springs are in the rear to provide stability and help reduce sway and roll with heavy loads such as campers carry.

WRAPAROUND TAILLIGHTS
Recessed to protect them from breakage, these modern-looking taillights can be seen from both the side and the rear at night.

INDEPENDENT FRONT COIL SUSPENSION
Coil spring suspension in the front was designed by Chrysler engineering to give the driver and passengers a smooth, comfortable ride. Not available on four-wheel-drive models.

CALIPER DOOR LATCHES
These latches are similar to those used on passenger cars and have inside stop surfaces that are rubber-isolated.



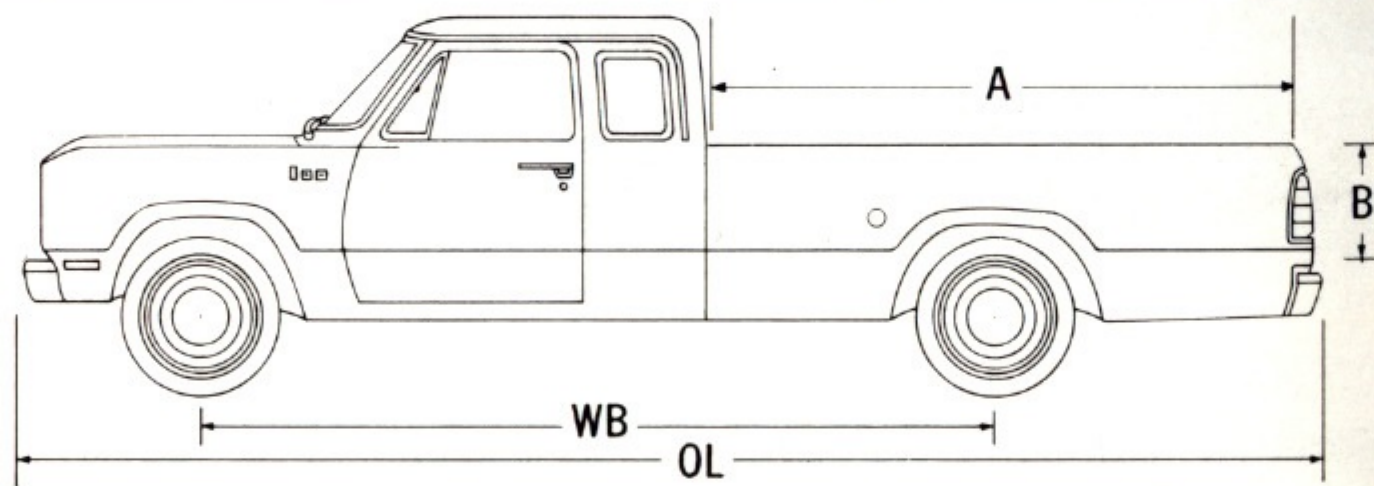
CONVENTIONAL CAB				
MODEL	D100/W100	D100/W100	D200/W200	D300
Wheelbase (WB)	115"	131"	131"	131"
Overall length* (OL)	193.6"	213.6"	213.6"	213.6"
Overall width	79.5"	79.5"	79.5"	94.2"
Nominal inside length	6½'	8'	8'	8'
Inside length (A)	78"	98"	98"	98"
Inside width (max.)	70"	70"	70"	70"
Width between wheelhousings	51"	51"	51"	51"
Height—top of sides and tailgate (B)	19½"	19½"	19½"	19½"
Capacity (water level) cu. ft.	61.1	76.6	76.6	76.6

*Including optional rear bumper.



DODGE CLUB CAB

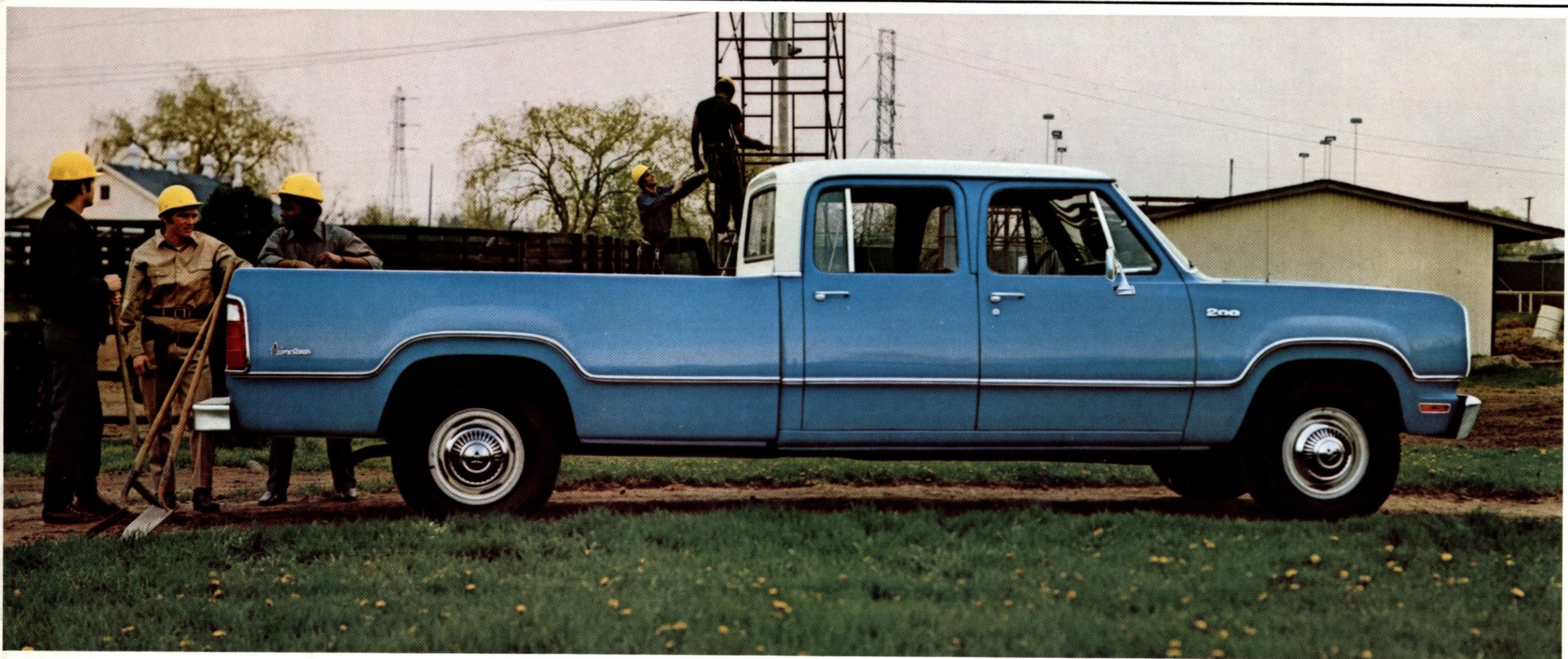
The Club Cab pickup truck was a Dodge "first." It is available on the D100, D200, and D300 models. The D100 offers a six-and-one-half-foot box size on a 133-inch wheelbase with an overall length of 208.2 inches. The D200 comes on a 149-inch wheelbase with an eight-foot bed and an overall length of 228.3 inches. The Club Cab is also available on a D300 chassis-cab and Sweptline pickup with a 149-inch wheelbase. The LoadFlite automatic transmission is an option that you might want to have if the ultimate driver is unfamiliar with or doesn't like a stick shift. Shown above is the Dodge Club Cab equipped with the Adventurer package. It can also be equipped with the Adventurer SE, Adventurer Sport, or Custom package and is available in the four-wheel-drive W100 and W200 models. For more information on exterior and interior trims, see pages 10 and 11 farther back in this catalog.



CLUB CAB				
MODEL	D100/W100	D100/W100	D200/W200	D300
Wheelbase (WB)	133"	149"	149"	149"
Overall length* (OL)	211.6"	231.6"	231.6"	231.6"
Overall width	79.5"	79.5"	79.5"	94.2"
Nominal inside length	6½'	8'	8'	8'
Inside length (A)	78"	98"	98"	98"
Inside width (max.)	70"	70"	70"	70"
Width between wheelhousings	51"	51"	51"	51"
Height—top of sides and tailgate (B)	19½"	19½"	19½"	19½"
Capacity (water level cu. ft.)	61.1	76.6	76.6	76.6

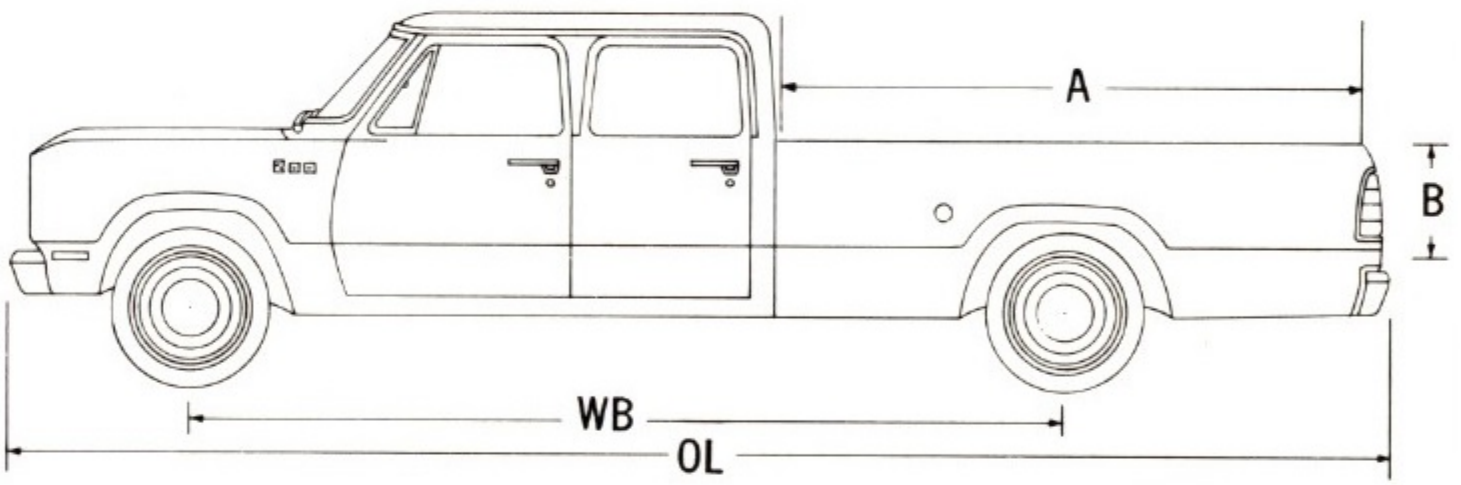
*Including optional rear bumper.

Colors are light blue and medium blue metallic. Optional equipment shown is radio, full-disc wheel covers, white sidewall tires, storage box under cargo bed and rear bumper.



DODGE CREW CAB

This is the model to choose when you need seating room for up to six people. The Dodge Crew Cab (shown above) is available in the D200 model and W200 on a 149-inch wheelbase. A cab and chassis (not shown) is available in the D300 model. Whichever model you choose, you are assured of ample legroom, headroom, and shoulder room—very important considerations if you intend to use your Crew Cab pickup to carry big, burly workmen. The D200 is available with a six-and-one-half-foot box on a 149-inch wheelbase with an overall length of 224.2 inches or an eight-foot box on a 165-inch wheelbase with an overall length of 244.2 inches. The D300 in the chassis-cab model has a wheelbase of 165 inches and an overall length of 240.7 inches. Shown above is the Crew Cab with the Adventurer package. It is also available with the Custom package. Four-wheel drive is available on the W200 model and should be considered if you intend to use your Crew Cab off the highway on rugged terrain. For information on the exterior and interior trims, see pages 10 and 11 farther back in this catalog.



CREW CAB		
MODEL	D200/W200	D200
Wheelbase (WB)	149"	165"
Overall length* (OL)	227.6"	247.6"
Overall width	79.5"	79.5"
Nominal inside length	6½'	8'
Inside length (A)	78.0"	98.0"
Inside width (max.)	70.0"	70.0"
Width between wheelhousings	51.0"	51.0"
Height—top of sides and tailgate (B)	19.12"	19.12"
Capacity (water level) cu. ft.	61.1	76.6

*Including optional rear bumper.

Shown above is a D200 Crew Cab with the Adventurer package. Colors are medium blue metallic and white. Optional equipment shown is radio, bright hubcaps, and rear bumper.



UTILINE PICKUP

Here is a solid, well-built pickup that was designed for hard work. It's the Dodge pickup that has a loyal following of owners who prefer to skip the frills and fancy looks for a truck that is capable of doing the job without fanfare. It even has running boards to assist in loading and unloading the box. It is available in D100, D200, and W100 and W200 4 x 4 models with either the Adventurer or Custom package. The Conventional Cab offers a 115-inch wheelbase with a six-and-one-half-foot box on the D100 and a 131-inch wheelbase with an eight-foot box on the D100 and D200. The D200 Crew Cab has a choice of either a 149-inch wheelbase with a six-and-one-half-foot box or a 165-inch wheelbase with an eight-foot box. The W200 offers a 149-inch wheelbase with a six-and-one-half-foot box. Like the other Dodge pickups, the Utiline offers full-time four-wheel drive. This makes it well-suited for farm or ranch where most of the driving is done on back roads and in bush country. For information on the exterior and interior trims, see pages 10 and 11 farther back in this catalog.

Shown above is the D200 Utiline. Color is white.



LIGHT-DUTY STAKE

If your hauling needs require a truck that can handle a wide variety of cargo in different sizes and shapes, here's the truck for you. Its removable stake sections allow you to handle odd-shaped cargo. If you intend to carry heavy loads, you can equip your stake with options such as dual rear wheels. Dodge stakes are available on the D200, D300, W200, and W300 models with the Adventurer SE,* Adventurer Sport, Adventurer, or Custom package.

DODGE DYNA-TRAC DUAL-REAR-WHEEL MODELS.

For 1975, Dodge is offering dual rear wheels on the D300 Conventional Cab with a 131-inch wheelbase and the D300 Club Cab with a 149-inch wheelbase. These models fill the need for those who use their pickups to carry extra-heavy loads. Available with Sweptline models only.

*Not available on W200 and W300.

Shown above is the D300 stake model with the Custom package. Color is medium blue metallic. Optional equipment is dual rear wheels.



DODGE POWER WAGON

Here is a pickup truck that is backed by over 30 years of serving military and civilian needs for four-wheel-drive vehicles. It is designed and built to be used as an off-the-highway vehicle for hunting and camping as well as on the job sites where the terrain calls for four-wheel power. For 1975, the Dodge power wagons offer full-time four-wheel drive and front wheel disc brakes as standard. The four-wheel-drive system consists of five settings—high lock, high, neutral, low, and low lock. One of the benefits of four-wheel drive is that if the wheels on one axle start to slip on ice or mud, the wheels on the other axle automatically take over. With constant four-wheel drive,

you also get excellent traction when driving on wet or slippery roads. There are three light-duty power wagon models: Dodge W100, W200, and W300 available in Club Cab, (shown above) Conventional Cab and Crew Cab. Choice of Adventurer Sport, Adventurer, or Custom package. See pages 10 and 11 for details on what each offers in equipment and features. See page 14 for specifications. If you need more power or size, there's also the W600, a medium-duty model. All models can be equipped with towing or snowplowing rigs.

Shown above is the W100 with the Adventurer package. Optional equipment shown is radio, bright low-mount mirrors, full-disc wheel covers and bumper guards.



ADVENTURER SE INTERIOR (top left)

This interior features a bench seat with thick, full-depth foam cushion and seat back. The upholstery is pleated cloth-and-vinyl, color-keyed to whatever interior color is selected. Color choices are gold, blue, green, or black. The Club Cab seat has a spring and foam-pad topper with moulded full-foam in back.

ADVENTURER SPORT (top right)

The upholstery on this bench seat is long-wearing pleated vinyl which covers the full-depth foam cushion and seat back. Color choices available are parchment, blue, green, and black. The Club Cab seat has a spring and foam-pad topper with moulded full-foam in back.

ADVENTURER INTERIOR (bottom left)

This handsome interior has a full-width seat covered with pleated vinyl that has excellent wear qualities. Beneath the upholstery is a full-foam seat cushion and seat back. Color selection includes parchment, blue, green, and black. The Club Cab seat has a spring and foam-pad topper with moulded full-foam in back.

CUSTOM INTERIOR (bottom right)

The Custom interior combines good looks with durability and comfort. The full-depth foam cushion and seat back are covered with tough vinyl. The color selection offers blue, green, parchment, and black. Club Cab seat has a spring and foam-pad topper with moulded full-foam in back.

BUCKET SEAT INTERIOR PACKAGE (at right)

Handsome, all-vinyl upholstery in a choice of parchment or black. Also included are a center console, carpeting, and insulation. Available in all D100, D200, and D300 models and W100 and W200 Club Cab models with all trim packages.



ADVENTURER SE EXTERIOR TRIM



ADVENTURER SPORT EXTERIOR TRIM



ADVENTURER EXTERIOR TRIM



CUSTOM EXTERIOR TRIM

Models shown above have the following optional equipment: bright wheel covers, white sidewall tires, and rear bumper.

ADVENTURER SPECIAL EDITION EXCLUSIVES

Along with the Custom model features, the following items are included when you order the Adventurer SE package:

- Exterior body side mouldings with wood-grained vinyl inserts along fender, door, and body
- Side nameplate "Adventurer SE"
- Tailgate mouldings with wood-grained vinyl insert and nameplate (Sweptline pickup models only)
- Bright and simulated wood-grained instrument panel trim moulding
- Pleated cloth-and-vinyl full-foam seats and back, color-keyed
- Inner door trim panels—plastic with padded panel and integral armrests, nameplate, and vinyl lower door storage pockets
- Bright tread plates
- Bright trim around accelerator, brake, and clutch pedals
- Carpeting, color-keyed
- Convenience package
- Formed plastic rear side and back inner panels on Club Cab.

PLUS:

- Bright grille
- Bright front bumper
- Bright vent wing division bar
- Bright drip rails, rear window mouldings, side quarter window mouldings (Club Cab), and windshield mouldings
- Bright tail lamp bezels (Sweptline pickup models)
- Bright and simulated wood-grained instrument face plate
- Parchment-colored foam core headliner
- Cigarette lighter
- Horn bar
- Bright hubcaps (not available with dual rear wheels)
- Color-keyed instrument panel with SE nameplate
- Bright front wheel-lip mouldings (all models) and bright rear wheel-lip mouldings on Sweptline models.

ADVENTURER SPORT EXCLUSIVES

Along with the standard Custom model features, the following items are included when you order the Adventurer Sport package:

- Exterior paint-filled wide body side mouldings
- Side nameplate "Adventurer Sport"
- Bright paint-filled tailgate mouldings (Sweptline pickups only)
- Bright and simulated wood-grained instrument panel trim moulding
- Bright and simulated wood-grained instrument cluster face plate
- Pleated vinyl seats with buttons and full-foam cushion and seat back, color-keyed
- Inner door trim panels with integral armrests and simulated wood-grained applique
- Bright front wheel-lip mouldings (all models) and bright rear wheel-lip mouldings on Sweptline models.

PLUS:

- Bright grille
- Bright front bumper
- Bright vent wing division bar
- Bright drip rails and bright windshield and rear window mouldings
- Bright tail lamp bezels (Sweptline pickup models)
- Bright side window mouldings (Club Cab only)
- Parchment-colored foam core headliner
- Cigarette lighter
- Horn bar
- Bright hubcaps (except with dual rear wheels)
- Adventurer nameplate on instrument panel
- Deluxe front floor mat, color-keyed on Conventional Cab, black only on Club Cab
- Formed plastic rear side and back inner trim panels—color-keyed (Club Cab only).

ADVENTURER EXCLUSIVES

Along with the standard Custom model features, the following items are included when you order the Adventurer package:

- Exterior body side mouldings along fender, door, and Sweptline box
- Side nameplate "Adventurer"
- Tailgate mouldings, upper and lower (Sweptline only)
- Pleated vinyl seats with buttons and pad, color-keyed on Conventional Cab, parchment or black on Club Cab
- Inner door trim panels—fiber-glass with integral armrests, color-keyed with bright moulding and "Adventurer" nameplate.

PLUS:

- Bright grille
- Bright front bumper
- Bright vent window division bar
- Bright windshield moulding
- Bright tail lamp bezels (Sweptline pickup only)
- Cigarette lighter
- Horn bar
- Deluxe front floor mat, color-keyed on Conventional Cab, black only on Club Cab
- Formed plastic rear side and back inner trim panels on Club Cab.

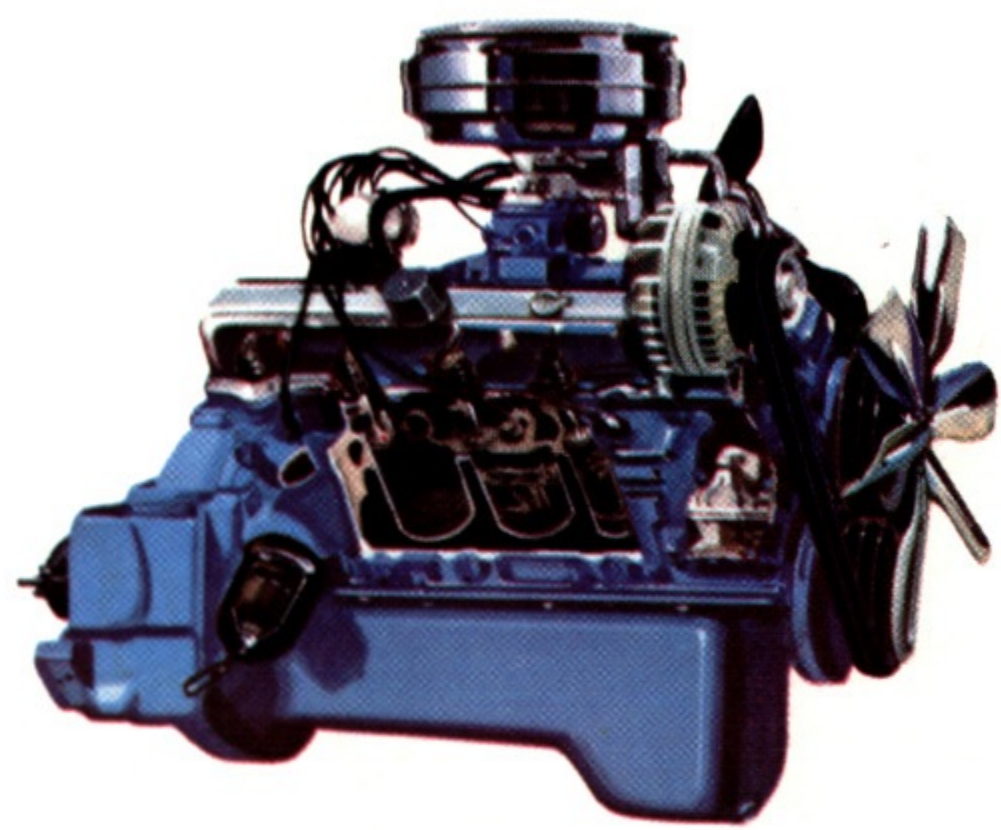
CUSTOM FEATURES

The following items are included when you order the Custom model:

- Side nameplate "Custom" on Sweptline box
- Vinyl seats with full-depth foam cushion
- D100, D200, D300, W100, or W200 nameplate on front fender
- Color-keyed padded instrument panel.
- Color-keyed seat trim
- Color-keyed armrests.

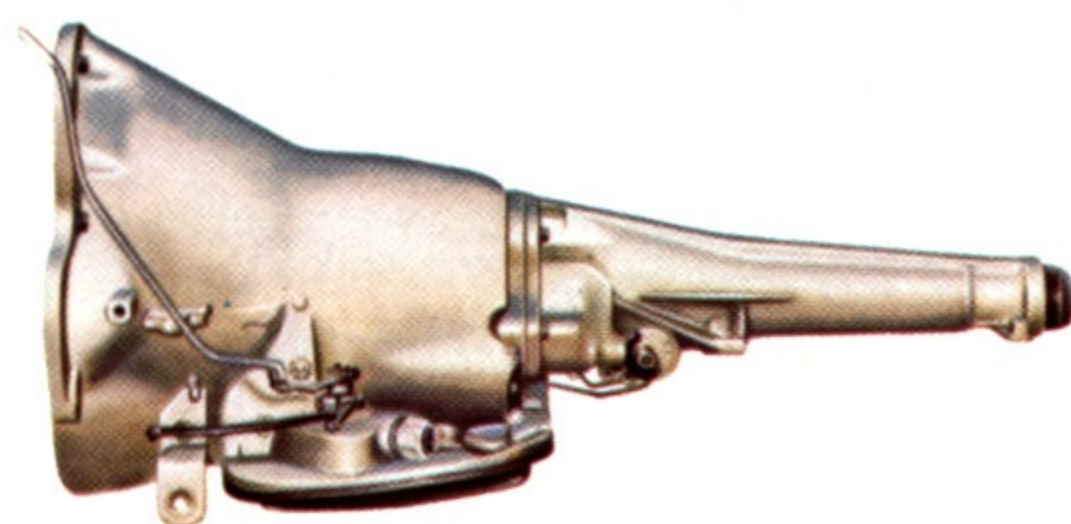
- Bright grille
- Bright front bumper
- Painted hubcaps
- Horn button
- Black rubber floor mat
- 10-inch inside day/night rearview mirror
- Padded sun visors
- Bright mirrors.

ENGINES, TRANSMISSIONS, AND ELECTRONIC IGNITION SYSTEM



ENGINE AVAILABILITY

The standard engine for the D100, D200, D300, W100, W200, and W300 pickup models is the 225-cubic-inch Slant Six or the 318-cubic-inch V8. If you intend to use your pickup for heavy-duty purposes such as carrying a slide-on camper, it is recommended that you order one of the bigger V8s that are optional at extra cost. These include a 360-cubic-inch and a 440-cubic-inch V8.



STANDARD TRANSMISSION

The standard transmission for the D100, D200, W100, and W200 pickup models is the three-speed manual. If you intend to use your pickup for more rugged duty such as carrying a slide-on camper, we suggest you order the optional four-speed manual or the optional LoadFlite three-speed automatic transmission. On the D300 and W300, the four-speed manual transmission is standard. All are Chrysler-engineered to give you the power you need to suit the job.



ELECTRONIC IGNITION SYSTEM

This system is available as standard equipment on all North American-built Dodge trucks with gasoline engines. It eliminates points and condenser, common causes of engine trouble. It also extends the life of your spark plugs and lowers maintenance costs.

SELECTED STANDARD EQUIPMENT

FUSES AND FLASHER UNITS ARE CONVENIENTLY LOCATED IN GLOVE BOX.



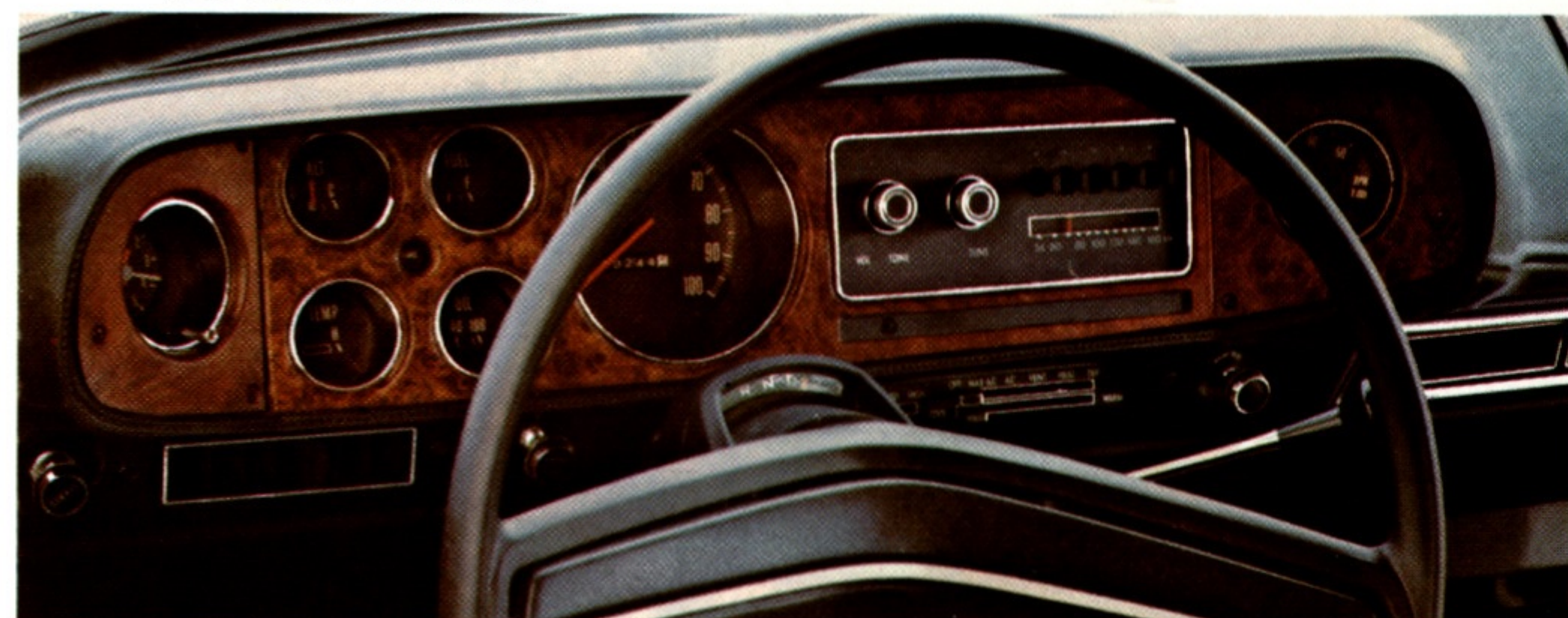
SIDE MARKER LIGHTS CAN BE EASILY SEEN AT NIGHT.



DOUBLE-WALL CONSTRUCTION FOR EXTRA STRENGTH.



WRAPAROUND TAILLIGHTS FOR ADDED SAFETY AT NIGHT.



NEW INSTRUMENT PANEL OFFERS EASY-TO-READ DIALS AND GAUGES AND NEW PANEL PAD. FOR 1975, BOTH TACHOMETER AND CLOCK ARE AVAILABLE AS OPTIONS.

PACKAGE IDENTIFICATION NAMEPLATE ON SIDE OF BOX.



POPULAR OPTIONAL EQUIPMENT

POWER BRAKES MAKE BRAKING SMOOTH AND ALMOST EFFORTLESS.



ANTISPIN DIFFERENTIAL HELPS YOU GO IN MUD AND SNOW.



BOX SIDE RAILS DRESS UP THE APPEARANCE OF THE CARGO BOX.



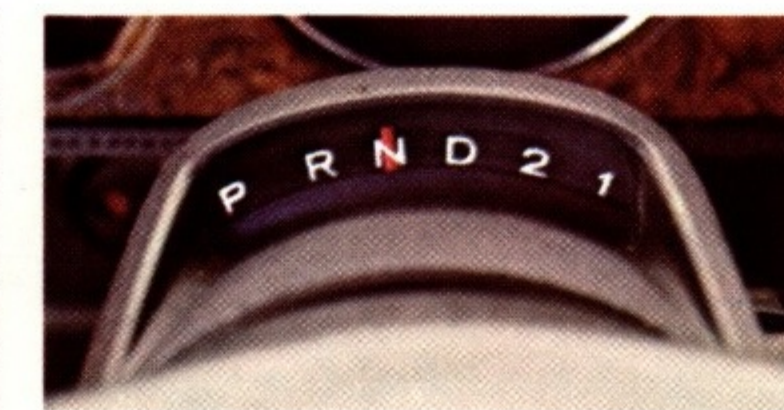
CARGO LIGHT LETS YOU SEE TO LOAD AND UNLOAD AT NIGHT.



BRIGHT-FINISH, SPORTY-LOOKING ROAD WHEELS.



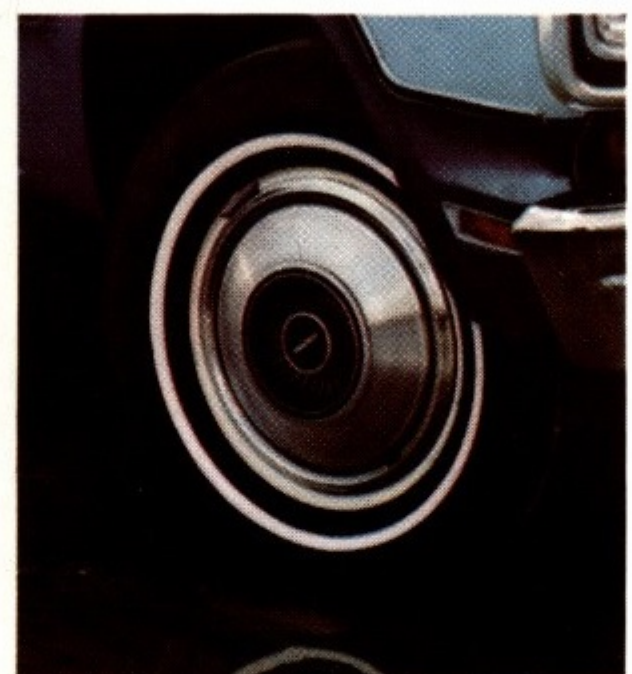
PREMIUM WHEEL COVERS FOR A TOUCH OF CLASS.



LOADFLITE AUTOMATIC TRANSMISSION FOR ADDED DRIVING CONVENIENCE.



REAR SLIDING WINDOW FOR ADDED VENTILATION AND ACCESS TO REAR.



BRIGHT-FINISH WHEEL COVERS FOR ADDED SPARKLE.



TOOL BOX UNDER CARGO BED KEEPS EQUIPMENT UNDER LOCK AND KEY.



AUTOMATIC SPEED CONTROL. SET IT AND IT HOLDS SPEED AUTOMATICALLY.



CONVENIENT STORAGE POCKET ON INSIDE OF DRIVER'S DOOR. AVAILABLE WITH SE PACKAGE ONLY.



BUMPER GUARDS OFFER PROTECTION FOR FRONT BUMPER.

AUXILIARY JUMP SEATS IN CLUB CAB OFFER SEATING CAPACITY FOR TWO MORE PASSENGERS. WHEN STORAGE SPACE IS REQUIRED, SEATS FOLD UP AND OUT OF THE WAY.

POPULAR OPTIONS

- Dual electric horns
- Low mount side mirrors
- Identification and clearance lights
- 2 shoulder belts
- Oil pressure gauge
- Box-mounted spare tire carrier (except D100 115-inch wheelbase)
- 360-cu.-in. and 440-cu.-in. V8 engines
- 4-speed transmission (standard on D300 and W300)

STANDARD EQUIPMENT

- 225-cu.-in. Dodge Slant Six engine
- 318-cu.-in. Dodge V8 engine
- 3-speed synchro-shift transmission
- Disc brakes (front), drum brakes (rear)
- Cleaner Air system
- Bright-finish front bumper
- Paint-finish hubcaps (optional on D300)
- Full-width rear window
- Spare wheel (D100 models)
- Mechanical axle jack and wheel wrench
- Color-keyed interiors



DODGE TRAILER-TOWING AND RV PACKAGES

Dodge light-duty pickups make excellent trailer-towing and slide-on-camper-carrying vehicles. All have coil spring front suspension and durable leaf springs for passenger-car driving comfort. Your Dodge Dealer will be happy to give you a Dodge Trailer-Towing and Recreational Vehicle catalog and assist you in selecting the right pickup and equipment to do the job.

FOUR-WHEEL DRIVE SPECIFICATIONS

SPECIFICATIONS	W100	W200	W300	W600
ENGINES—6-CYL. —V8	225-1 318-1, 360, 440			318 PREMIUM
CLUTCH—DIAMETER —AREA —DIAMETER	11" 123.7 SQ. IN.			13" 178 SQ. IN.
TRANSMISSION	3-SPD. SYN. 4-SPD. SYN. (NP435) (b) 4-SPD. SYN. (NP445) (c) 3-SPD. AUTOMATIC (A727)			4-SPD. SYN. (NP435) 5-SPD. SYN. (NP540G)
TRANSFER CASE	FULL-TIME FOUR-WHEEL DRIVE, SINGLE-LEVER			2-SPEED, 2 LEVER
AXLE, FRONT—CAPACITY	3,500 LBS. 4,000 LBS.	3,500 LBS. 4,000 LBS., 4,500 LBS.	4,500 LBS.	6,000 LBS., 7,500 LBS.
AXLE, REAR—CAPACITY RATIOS (TO 1)	3,600 LBS. 3.2, 3.9, 3.55 (225, 318, 360) 3.2, 3.55 (440)	5,500 LBS. 4.10	7,500 LBS. 4.88	15,000 LBS., 17,000 LBS. 6.2, 6.8 6.8
SPRINGS, FRONT CAPACITY (AT GROUND)	1,640 LBS.	1,640 LBS., 131" WB 1,800 LBS., 149" WB	1,940 LBS. 2,250 LBS.	3,000 LBS. 3,750 LBS.
SPRINGS, REAR CAPACITY (GROUND)	1,570 LBS., 115", 131" WB, V8 1,970 LBS., ALL WB 6-CYL.	1,970 LBS. 2,450 LBS.	3,600 LBS.	7,500 LBS., 8,500 LBS. 9,250 LBS.
—15,000-LBS. R/A				8,500 LBS., 9,250 LBS. 10,400 LBS.
—17,000-LBS. R/A				2,300 LBS.
AUXILIARY REAR SPRING			585 LBS.	
TIRES—FRONT & SINGLE REAR —FRONT & DUAL REAR	G78-15-B (4PR.)	8.00-16.5-D (8PR.)	8.75-16.5-E (10PR.)	8.25-20-E (10PR.)
MAX. AVAIL.—FRONT & SINGLE REAR FRONT & DUAL REAR	7.00-15-D (8PR.)	9.50-16.5-E (10PR.)	9.50-16.5-E (10PR.) 7.50-16-D (8PR.)	9.00-20-F (12PR.)
BRAKES, SERVICE	HYDRAULIC DUAL BRAKING SYSTEM WITH WARNING LIGHT			SINGLE HYDRAULIC SPLIT-BRAKING SYSTEM
FRONT BRAKE SIZE (IN.)	11.75" X 1.25" DISC	12.82" X 1.19" DISC	12.88" X 1.19" DISC	14 X 2.25—122.4
REAR BRAKE SIZE (IN.)—AREA (SQ. IN.)	11" X 2.5"—106.4	12 X 2.5—122.8	12 X 3.0—147.4	15 X 5—316.0, 15 X 6—379.3
BRAKES, VACUUM POWER	9.0" DIAMETER	9.0" DIAMETER	9.0" DIAMETER	11.5" DIAMETER, TWO 12.8"
OTHER COMPONENTS				
AIR CLEANER	1-QT. OIL BATH			
ALTERNATOR	12-VOLT, 48-AMP, 55-AMP, OR 72-AMP			
BATTERY	12-VOLT, 48-AMP-HR 59-AMP-HR, 70-AMP-HR			12-VOLT, 59-AMP-HR 70-AMP-HR OR 90-AMP-HR
BRAKES, PARKING	FOOT PEDAL TYPE 11" X 2.5"			HAND LEVER 10" X 1.5"
FRAME—SECTION MODULUS MATERIAL P.S.I.—AVERAGE	3.43—115" WB, 3.88—131" WB 36,000	3.88—131" WB, 5.02—149" WB (a) 5.47—149" WB (d) 36,000	5.02 36,000	14.5 (e) 50,000

(a) Crew Cab.
(b) Wide-spaced ratio.
(c) Close-spaced ratio.
(d) Club Cab.
(e) With reinforcement.

EQUIPMENT IN RED—OPTIONAL AT EXTRA COST.
All models include Electronic Ignition and Exhaust Emission Control Systems.
NOTE: Optional Emission Reduction Control System is required on all models registered in the state of California.

LIGHT-DUTY PICKUP SPECIFICATIONS

SPECIFICATIONS	D100	D200	D300
ENGINES—6-CYL. —V8	225-1 318, 360, 440		
CLUTCH—DIAMETER —AREA —DIAMETER —AREA	10" (6-CYL.) 100.6 SQ. IN.	11" (6-CYL.) 123.7 SQ. IN.	11" (6-CYL.) 123.7 SQ. IN.
TRANSMISSION	3-SPD. SYN. 4-SPD. SYN. (NP435) 4-SPD. SYN. (NP445) 3-SPD. AUTOMATIC (A727)	3-SPD. SYN. 131", 149" WB 4-SPD. SYN. (NP435), 165" WB 4-SPD. SYN. (NP435) 4-SPD. SYN. (NP445) 3-SPD. AUTOMATIC (A727)	4-SPD. SYN. (NP435) 4-SPD. SYN. (NP445) 3-SPD. AUTOMATIC (A727)
AXLE, FRONT—CAPACITY	3,000 LBS.	3,300 LBS., 131", 149" WB 3,800 LBS., 165" WB	3,800 LBS.
AXLE, REAR—CAPACITY	3,300 LBS.	5,500 LBS., 131", 149" WB; 6,200 LBS., 165" WB	7,500 LBS., 135" 159" 165" WB 6,900 LBS., 131" 149" WB
RATIO (TO 1)	3.2(a), 3.55(a), 3.9—6-CYL.; 2.71, 3.2(a), 3.55(a), 3.9—V8	3.54, 4.1	4.1
SPRINGS—FRONT CAPACITY (AT GROUND)	1,340 LBS., 6-CYL., 115" WB 1,440 LBS., 6-CYL. 131", 133"(b), & 149"(b) WB 1,440 LBS., 6-CYL. 115" WB 1,540 LBS., 6-CYL. 131", 133"(b), & 149"(b) WB 1,440 LBS., V8, 115" WB 1,540 LBS., V8 131", 133"(b), & 149"(b) WB 1,540 LBS., V8, 115" WB 1,615 LBS., V8, ALL WB(d)	1,465 LBS., 6-CYL., 131", 149"(b) WB 1,645 LBS., 6-CYL., 149" WB(c) 1,915 LBS., 6-CYL., 165" WB 1,565 LBS., V8, 131", 149"(b) WB 1,645 LBS., V8, 149" WB(c) 1,915 LBS., V8, 165" WB 1,565 LBS., 6-CYL., 131", 149"(b) WB 1,645 LBS., 6-CYL. & V8, 131", 149"(b) WB (d)	1,540 LBS., 6-CYL., 135" WB 1,690 LBS., 6-CYL., 131", 149", 159", 165" WB 1,540 LBS., V8, 135" WB 1,690 LBS., V8, 131", 149", 159", 165" WB 1,690 LBS., 6-CYL. & V8, 135" WB
MAXIMUM AVAILABLE		1,915 LBS., ALL WB	1,915 LBS., 131", 135", 149", 159", 165" WB
SPRINGS—REAR CAPACITY (AT GROUND)	1,520 LBS., ALL WB	2,175 LBS., 131" & 149" WB 2,820 LBS., 165" WB	2,820 LBS., 135" & 159" WB WITH SRW 3,650 LBS., 131", 135", 149" & 159" WB WITH DRW
MAXIMUM AVAILABLE	1,820 LBS., ALL WB	2,725 LBS., 131", 149" WB 2,820 LBS., 165" WB	3,650 LBS., 135" & 159" WB WITH SRW 3,650 LBS., 165" WB
TIRES—FRONT AND SINGLE REAR —FRONT AND DUAL REAR	G78-15-B (4PR.)	8.00-16.5-D (8PR.)	8.00-16.5-D (8PR.) 135" & 159" WB 8.00-16.5-C (6PR.) FRT. 131" & 149" WB 8.00-16.5-D (8PR.) REAR 131" & 149" WB SWEETLINE PICKUP ONLY. 8.00-16.5-E (10PR.) REAR 149" WB CLUB CAB ONLY. 8.00-16.5-C (6PR.) 165" WB 9.50-16.5-E (10PR.) 8.00-16.5-E (10PR.)
MAX. AVAIL.—FRONT AND SINGLE REAR —FRONT AND DUAL REAR	LR78-15-B (4PR.)(e)	9.50-16.5-E (10PR.)	
BRAKES, SERVICE	HYDRAULIC DUAL BRAKING SYSTEM WITH WARNING LIGHT		
FRONT—FRONT AXLE CAPACITY DISC BRAKE SIZE (IN.)—AREA (SQ. IN.) (PAIR) REAR—REAR AXLE CAPACITY DRUM BRAKE SIZE (IN.)—AREA (SQ. IN.) (EACH)	3,000 LBS. 11.75 X 1.25—218.5 3,300 LBS. 10 X 2.5—97.6	3,300 LBS. 12.82 X 1.19—249.4 5,500 LBS. 12.12 X 2—104.7 12 X 2.5—122.8	3,800 LBS. 12.82 X 1.19—249.4 6,200 LBS. 12 X 3—147.4 6,900 LBS.
BRAKES, VACUUM POWER	11" DIAMETER	9" DIAMETER	
AIR CLEANER	DRY-TYPE (6-CYL. AND V8) 1-QT. OIL BATH (6-CYL. AND V8)(f)		1-QT. OIL BATH (6-CYL.) (V8)(f) DRY-TYPE (V8)
ALTERNATOR	12-VOLT, 48-AMP, 55-AMP OR 72-AMP		
BATTERY	12-VOLT, 48-AMP-HR, 59-AMP-HR(g), 70-AMP-HR(h)		
BRAKES, PARKING	FOOT PEDAL TYPE		
SIZE	10" X 2.5"	12.12" X 2"	12" X 2.5" 12" X 3"
SHOCK ABSORBERS	FRONT AND REAR, HEAVY-DUTY	FRONT AND REAR, HEAVY-DUTY	FRONT, FRONT AND REAR, HEAVY-DUTY
STEERING	RECIRCULATING BALL MANUAL, POWER STEERING		

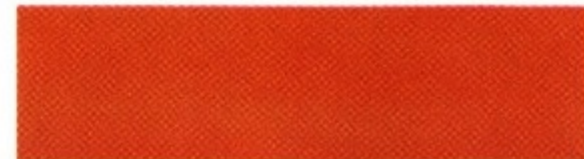
(a) Antispin differential available with 3.2 and 3.55 rear axle ratios.
(b) Club Cab.
(c) Crew Cab.
(d) Minimum springs with A/C.
(e) WSW steel-belted radial.
(f) 318 V8.
(g) Included with 360 V8 engine.
(h) Included with 440 V8 engine.

NOTE: Optional Emission Reduction Control System is required on all models registered in the state of California.

N.A.D. (Non-Aqueous Dispersion) Acrylic Enamel is the finish for Dodge pickup models. It was selected because of its durability and resistance to fading, nicks, and abrasion.

NOTE:
Due to occasional printing irregularities, the colors shown may vary slightly from actual hues. See your Dodge Dealer for accurate color chips.

EXTERIOR COLORS



SUNSTONE*



MEDIUM GOLD METALLIC



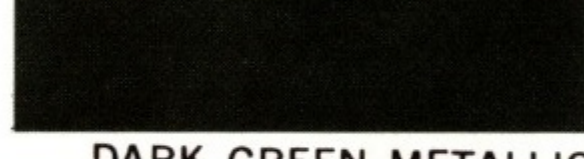
LIGHT GREEN



AVOCADO METALLIC



LIGHT GOLD



DARK GREEN METALLIC



BRIGHT RED



WHITE



LIGHT BLUE



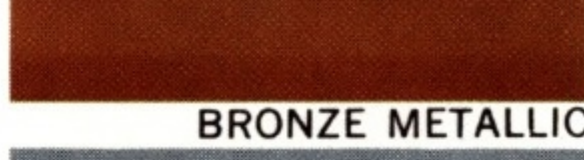
MEDIUM BLUE METALLIC



YELLOW



MEDIUM GOLD

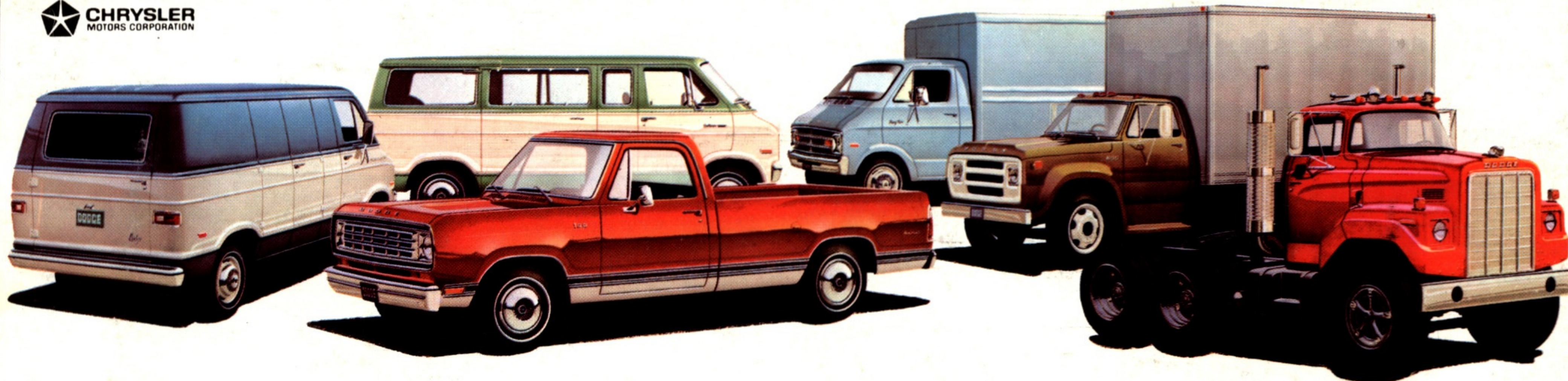


BRONZE METALLIC



SILVER CLOUD METALLIC

*extra cost



DODGE BUILDS A FULL LINE OF TRUCKS.



Dodge

Dodge Trucks



**YOUR SIGNS FOR
MOTORING SATISFACTION**



All product illustrations and specifications are based on authorized information. Although all descriptions are believed correct at publication approval, accuracy cannot be guaranteed. Some of the equipment shown on product illustrations is optional at extra cost. Dodge Division reserves the right to make changes from time to time, without notice or obligation, in prices, specifications, colors and materials and to change or discontinue models.