

# LINCOLN-MERCURY '82





## ENTER THE WORLD OF LYNX.

Lincoln-Mercury introduced Lynx to meet America's need for a small, well-equipped, fuel-efficient car.\* With its advanced technology and contemporary design, Lynx has become a solid success during

its first year. Building on this success, Lynx for '82 introduces a brand-new five-door hatchback. Now you can choose between the three-door or five-door or the stylish station wagon. Lynx also offers several

equipment and luxury levels, from the standard Lynx up to the luxurious Lynx LS.

A big part of Lynx's success story is its advanced technology: front-wheel drive; aerodynamic shape; fully independent

suspension on all four wheels. Inside, Lynx offers a high level of luxury, roominess and comfort, as evidenced in its interior, shown left, below.

Lynx is a car with world-class

technology, designed and developed by Ford Motor Company engineers from all over the world. But it's built in America to meet America's needs, as last year's success clearly shows.



Mercury Lynx LS five-door.

Lynx offers you a high level of equipment, as in the sheer comfort of deeply padded, contoured bucket seats; a soft-feel

instrument panel with "soft-glow" lights for easy reading; over 53 square feet of plush carpeting; thoughtful touches like coin

trays on the instrument panel; and a remarkable amount of headroom, legroom, and hiproom.



Lynx LS interior.



Mercury Lynx GL three-door.

Lynx wagons posted the best gas mileage ratings of any wagon built in America last year: 27\* EPA EST. MPG, 42 EST. HWY. And we expect to post equally impressive ratings this year. In addition, Lynx wagons

offer such standard features as a tailgate ajar warning light, power brakes, carpeting on the load floor, and a remarkable 58.3\*\* cubic feet of cargo-carrying capacity.

Lynx. A lot of car to like.

\*EPA estimates were not available at the time this catalog was published. Lynx, however, should post in the new EPA Gas Mileage Guide excellent miles-per-gallon ratings. See your Lincoln-Mercury dealer for details. Compare to estimated MPG of other cars. Your mileage may differ, depending on speed, weather conditions, and trip length. Actual highway mileage lower.

\*\*Based on MVMA Specifications.



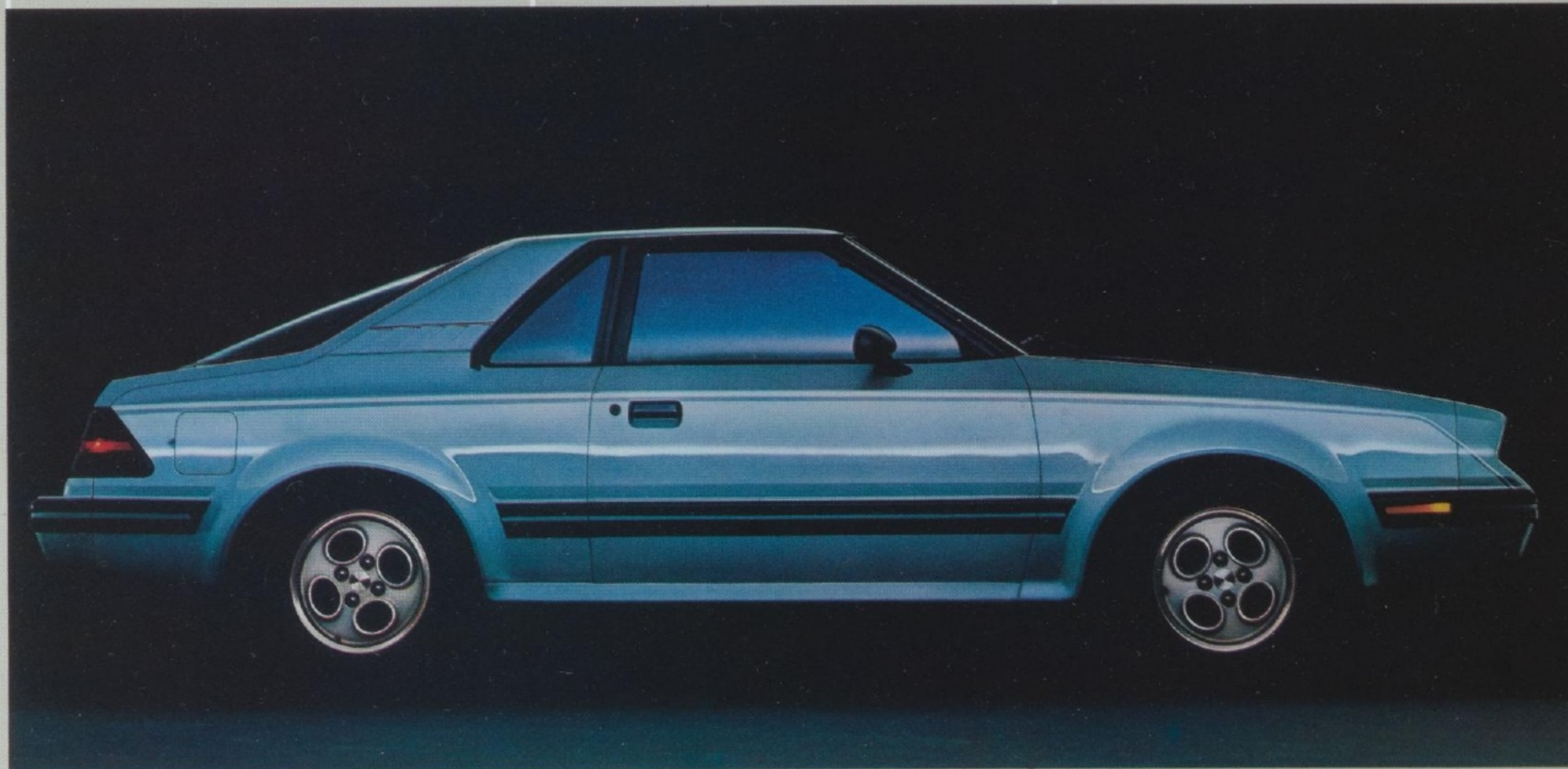
Mercury Lynx GS Wagon, with Villager option, foreground, and Mercury Lynx GL Wagon.



LN7. STARTING TODAY,  
THERE IS SOMETHING  
BEYOND THE FUEL-  
EFFICIENT AUTOMOBILE.

Come drive a road you've never traveled before. The new two-seater Mercury LN7 will change forever your ideas about what "economy" means. It has 29\* EPA

estimated MPG, 46 estimated highway... along with stunning good looks and the best aerodynamic ratings of any standard-equipped American-built car.\*\*



Mercury LN7.

CAPRI. SHEER MAGIC.

Elusive. Exciting. Wild. Seductive. Sexy. Sleek. Sophisticated. Mercury Capri is the sporty, specialty car that puts you under its spell. Its European-inspired sports styling

offers more than great looks. There's Capri's flat cornering, firm-riding suspension system and precision rack-and-pinion steering. Plus the practicality of



Mercury Capri RS.

Engineered with some of the most advanced technology of our times... including front-wheel drive and a four-wheel fully independent suspension

specially tuned for sport handling. And that translates into something that's been on the endangered species list until now, the fun of driving. LN7: high style and high

mileage...in a real driver's car.

\*Compare to estimated MPG of other cars. Your mileage may differ, depending on speed, weather conditions, and trip length. Actual highway mileage lower.  
\*\*Based on Ford Motor Company testing against competitive models.



LN7 interior with reclining bucket seats.

a liftgate third door and folding rear seat for lots of cargo space. Express your individuality with a range of options: 5-speed overdrive stick-shift transmission

(standard in Washington, Oregon, Alaska, Hawaii and California). Ultra-sophisticated TR Performance Package. T-roof, or flip-up/open air roof, for the open-air

feeling of a convertible. Capri magic. Adventure awaits you.



Optional Recaro bucket seats.



**ZEPHYR. JUST BIG ENOUGH,  
JUST SMALL ENOUGH, TO  
BE JUST RIGHT.**

Just right. That sums up the new Zephyr. Outside, a sleek, trim contemporary size. Inside, Zephyr four-door sedan seats five people—or six, depending on the seating

you choose. Then there's the sporty, personal-size Zephyr Z-7...to put a little more Z-est in your life. Zephyr's roominess extends into its trunk, with 16.7 cubic feet

(Z-7, 16.5 cu. ft.). For driveability, Zephyr gives you a just-right balance between power and weight. Standard is the smooth-running four-cylinder engine. For more

power, step up to Zephyr's optional six-cylinder engine. Both engines have a 16-gallon fuel tank. Now, Zephyr also offers a new extended-range optional

20-gallon fuel tank. Mercury Zephyr. It's a lot of value for the money.



*Mercury Zephyr GS four-door sedan.*



*Mercury Zephyr Z-7 GS.*

**XR-7 FOR '82.  
EXHILARATING!**

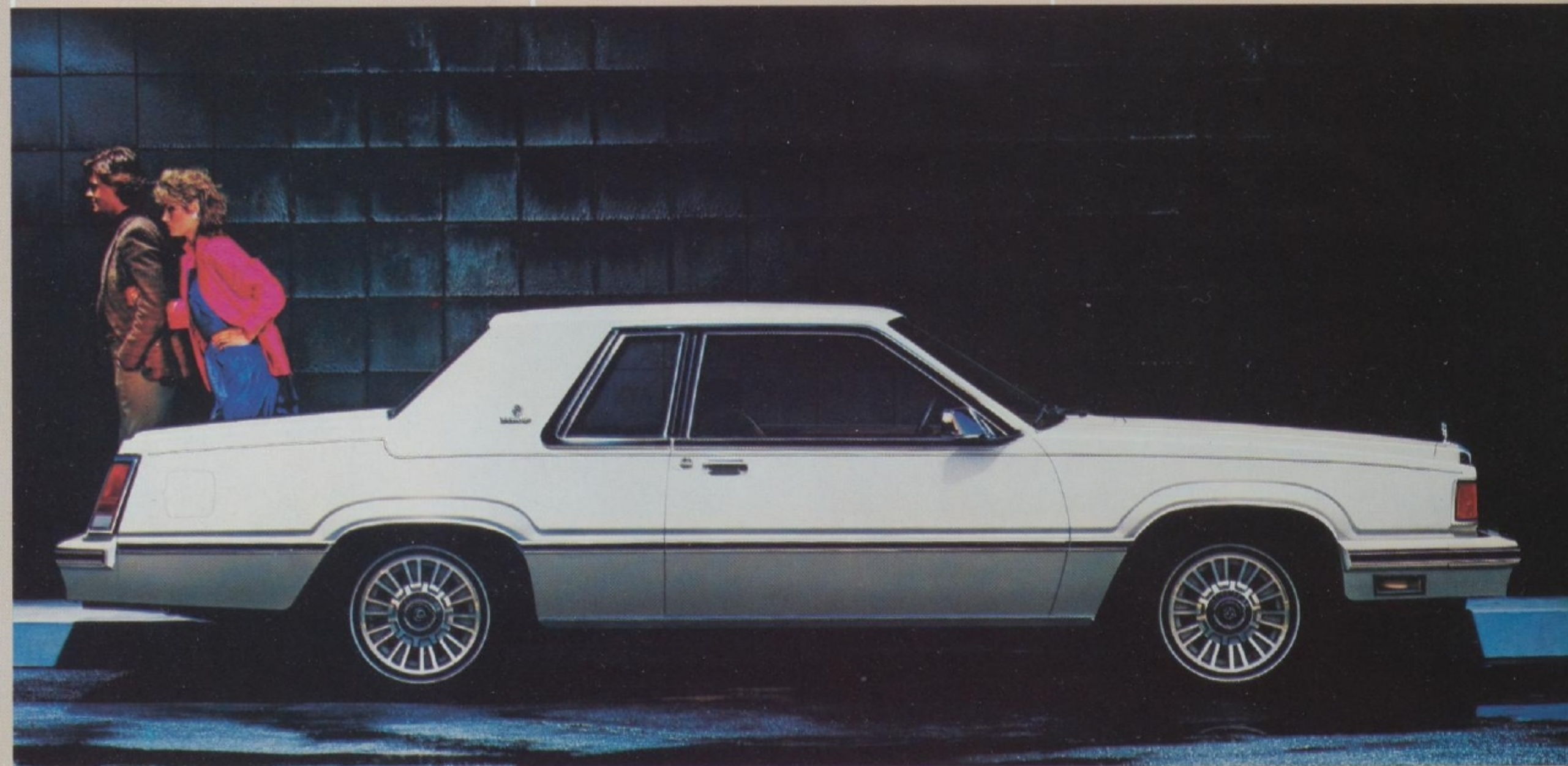
If this is your first encounter with the Cougar XR-7, be prepared. You're dealing with a car of extraordinary style. A truly

personal, highly expressive automobile. Sleek. Strong. Enthusiastically aggressive. Styled for your special style. Inside, a

stunning new XR-7 environment awaits you. XR-7's Twin Comfort Lounge seats with manual driver and passenger

recliners are upholstered in rich cloth. The same velour-like fabric used in the Lincoln Signature Series. The XR-7 for '82. From

the ground up, a car of impeccable design. And pure, exhilarating energy.



*Mercury Cougar XR-7 LS.*



*XR-7 LS interior with Twin Comfort Lounge seats.*



PRESENTING THE  
TRIMMEST CONTINENTAL  
EVER FASHIONED. YET  
ONE OF THE FINEST  
RIDING CONTINENTALS  
EVER BUILT.

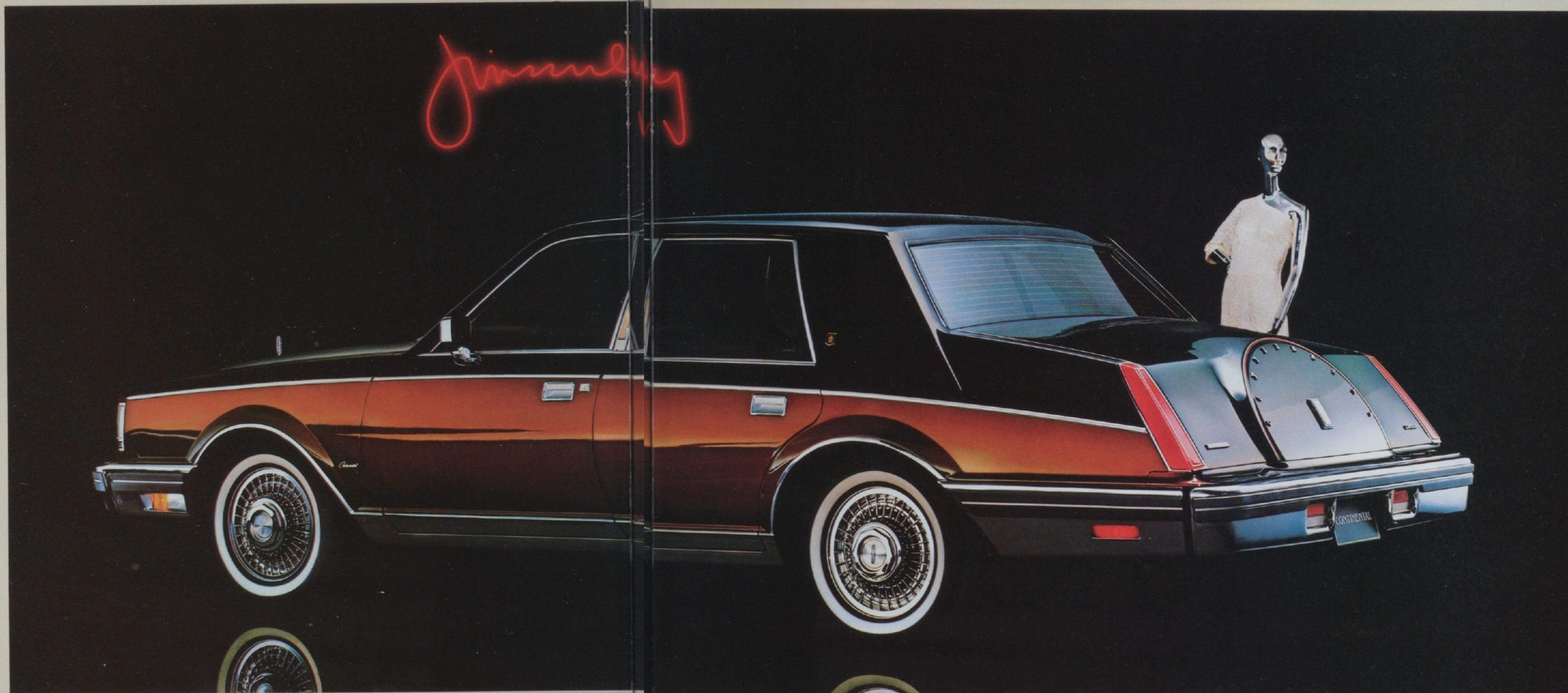
Out of its great heritage comes the new Continental for 1982. New in size, new in style, new in spirit, new in splendor. The most elegant Continental ever fashioned.

But for all its contemporary character, Continental draws upon the rich traditions of the past, as in its formal rear-deck treatment. At the same time, advanced technology has been utilized to fashion Continental's sleek, sophisticated shape. In Continental, the classic and the contemporary are harmonized in one superbly styled automobile.

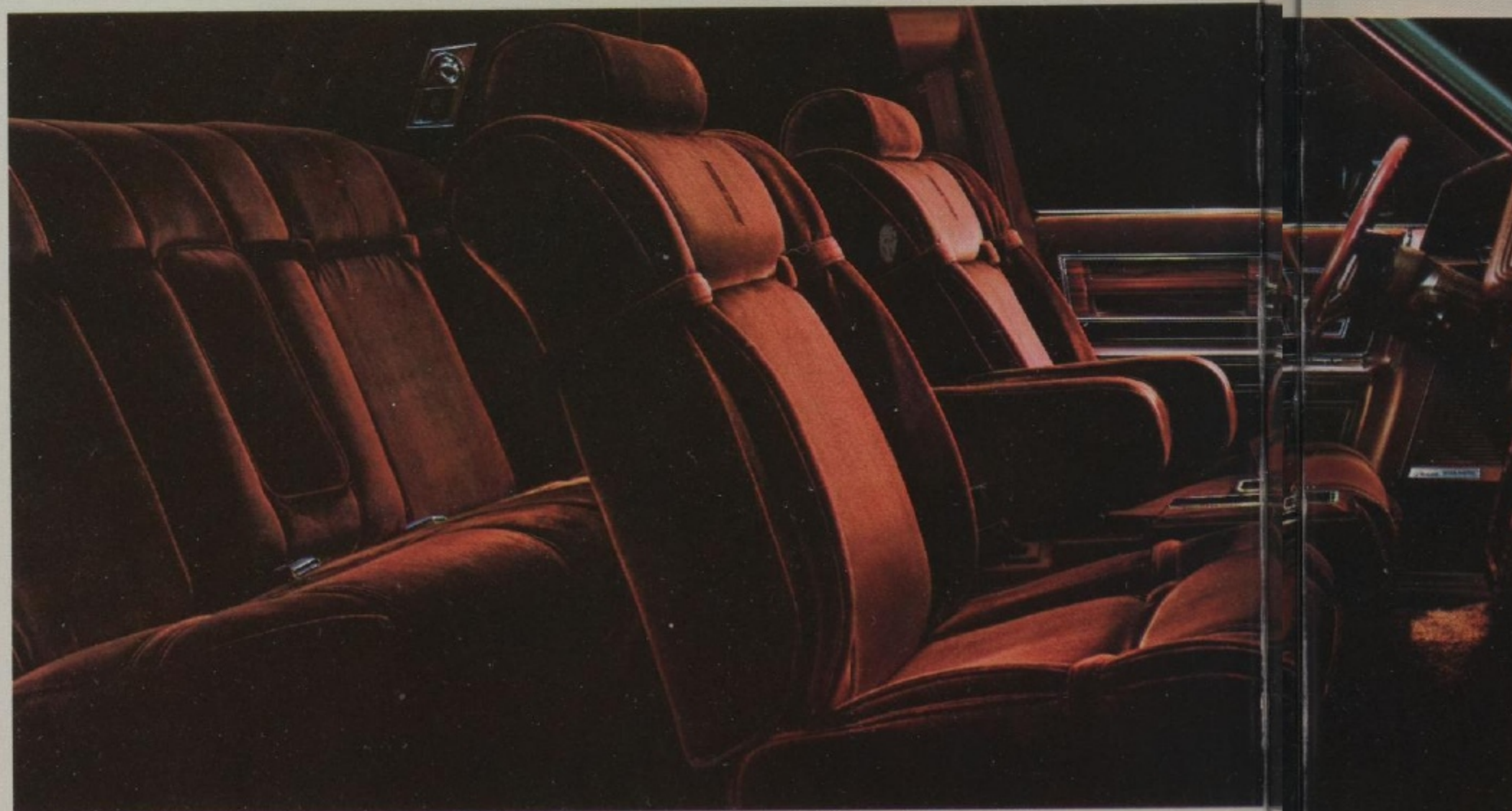
Inside, discover exquisitely fashioned interiors. Shown below left, the Givenchy interior, featuring Twin Comfort Lounge seats trimmed in lush Mulberry-colored Radcliffe cloth. Shown below right, Continental's Twin Comfort Lounge seats with optional Medium Fawn leather seating surfaces.

On the road, experience Continental's impressively quiet, smooth ride, together with driving ease and precise steering.

The new Continental for 1982. An automobile of rare breeding and beauty.



The 1982 Continental Givenchy Designer Series.



The Givenchy interior.



The 1982 Continental.



PRESENTING THE  
UNMISTAKABLE MARK VI  
FOR 1982.

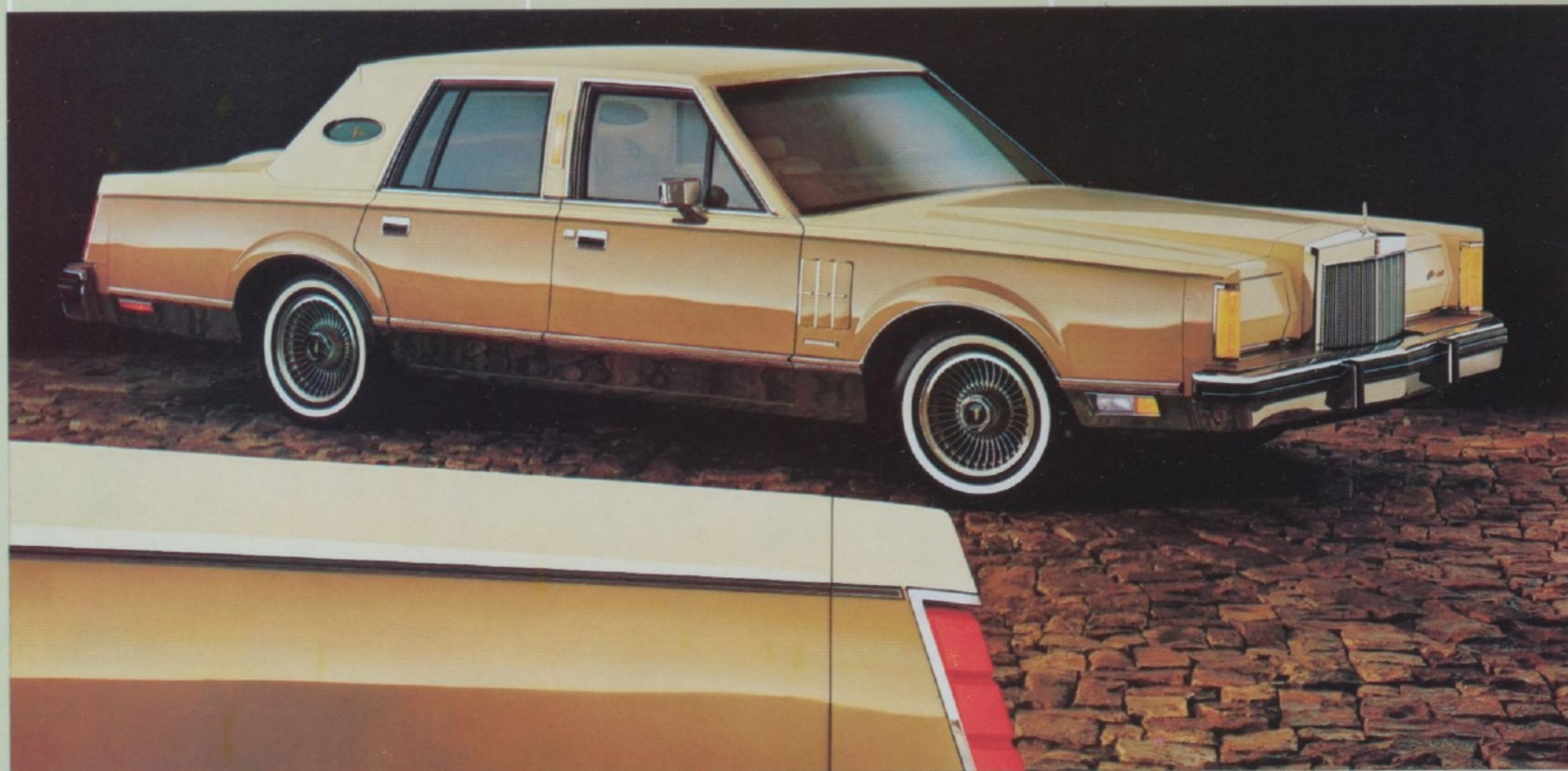
Here is a beautiful merging of superb styling and sophisticated electronic technology. Open the door to Mark's spacious, richly appointed interior. Shown

right, the Pucci interior, featuring Twin Comfort Lounge seats with soft, supple French Vanilla-colored leather seating surfaces. Discover Mark's sophisticated

electronic technology: the Electronic Instrument Panel with Message Center, that provides valuable driving information; Mark's 5.0 Liter V-8 engine with Electronic

Fuel Injection and Electronic Engine Controls; an innovative Automatic Overdrive Transmission; and a computerized Self-Diagnostic System to

make servicing faster and more efficient than before. Mark VI for 1982. Beautiful in looks, brilliant in electronic technology.



*The 1982 Mark VI Pucci Designer Series.*



PRESENTING THE  
LUXURIOUS LINCOLN  
FOR 1982.

The Lincoln legend. Sixty-one years of elegance and luxury. And a commitment to quality. With Lincoln for 1982, the legend lives on. From its bold grille to its

handsome roof line, Lincoln makes a statement of elegance that carries through to its gracious interior. Shown right, the Cartier interior, featuring Twin Comfort

Lounge seats with Opal leather seating surfaces, inset with Light Pewter Laurent cloth. Take the wheel and experience the smooth, luxurious ride. But for all its proud

heritage, Lincoln responds to the demands of its times. Offering high levels of contemporary electronic technology. Evident in the optional Electronic

Instrument Panel with Message Center. Lincoln for 1982. Proud of its past. Responsive to the present.



*The 1982 Lincoln Cartier Designer Series.*





## LYNX

- LYNX 3-DOOR
- LYNX L 3-DOOR\*
- LYNX L 5-DOOR\*
- LYNX GL 3-DOOR
- LYNX GL 5-DOOR
- LYNX GS 3-DOOR
- LYNX GS 5-DOOR
- LYNX LS 3-DOOR
- LYNX LS 5-DOOR
- LYNX RS 3-DOOR
- LYNX L STATION WAGON\*
- LYNX GL STATION WAGON
- LYNX GS STATION WAGON
- LYNX LS STATION WAGON



\*Not available in California, Oregon, Washington, Alaska, and Hawaii.

## LN7

- LN7



## CAPRI

- CAPRI
- CAPRI L
- CAPRI GS
- CAPRI RS
- CAPRI BLACK MAGIC



## ZEPHYR

- ZEPHYR 4-DOOR SEDAN
- ZEPHYR GS 4-DOOR SEDAN
- ZEPHYR Z-7 SPORT COUPE
- ZEPHYR Z-7 GS SPORT COUPE



## COUGAR

- COUGAR GS 2-DOOR SEDAN
- COUGAR GS 4-DOOR SEDAN
- COUGAR LS 2-DOOR SEDAN
- COUGAR LS 4-DOOR SEDAN
- COUGAR GS STATION WAGON
- COUGAR GS VILLAGER WAGON



## MARQUIS

- MARQUIS 4-DOOR SEDAN
- MARQUIS BROUGHAM 2-DOOR SEDAN
- MARQUIS BROUGHAM 4-DOOR SEDAN
- GRAND MARQUIS 2-DOOR SEDAN
- GRAND MARQUIS 4-DOOR SEDAN
- MARQUIS STATION WAGON
- MARQUIS COLONY PARK WAGON



## XR-7

- XR-7 GS
- XR-7 LS



## CONTINENTAL

- CONTINENTAL 4-DOOR SEDAN
- CONTINENTAL SIGNATURE SERIES 4-DOOR SEDAN
- CONTINENTAL GIVENCHY DESIGNER SERIES 4-DOOR SEDAN



## MARK VI

- MARK VI 2-DOOR COUPE
- MARK VI 4-DOOR SEDAN
- MARK VI SIGNATURE SERIES 2-DOOR COUPE
- MARK VI SIGNATURE SERIES 4-DOOR SEDAN
- MARK VI BILL BLASS DESIGNER SERIES 2-DOOR COUPE
- MARK VI GIVENCHY DESIGNER SERIES 2-DOOR COUPE
- MARK VI PUCCI DESIGNER SERIES 4-DOOR SEDAN




## LINCOLN

- LINCOLN TOWN CAR 4-DOOR SEDAN
- LINCOLN SIGNATURE SERIES 4-DOOR SEDAN
- LINCOLN CARTIER DESIGNER SERIES 4-DOOR SEDAN





**Motorcraft** 



...**FOR SURE**

### **QUALITY REPLACEMENT PARTS FROM FORD**

Your new Lincoln or Mercury comes equipped with factory-engineered and approved parts including a dependable Motorcraft battery, shock absorbers, spark plugs, long life oil filters, and motor oil. For continued top performance, be sure to specify genuine Motorcraft parts whenever replacement is necessary.



### **EXTENDED SERVICE PLAN**

Ford Motor Company's optional Extended Service Plan covers certain major components on new Mercury cars for longer than the vehicle's basic warranty. The cost is so moderate for the protection you get that it could pay for itself the first time you need it. Your Lincoln-Mercury Dealer will be happy to give you complete details of the Plan, which is available on cars sold and normally operated in the 50 United States and Canada.

### **THE LINCOLN COMMITMENT**

The Lincoln-Mercury Division announces extended service coverage on the 1982 Continental, Mark VI, and Lincoln as part of a comprehensive, new program committed to making your ownership of one of these luxury cars a totally satisfying experience.

Now your Continental, Mark VI, and Lincoln come with the regular limited warranty of 12 months/12,000 miles, plus extended service coverage on major power train and other components for 24 months/24,000 miles.

This supplemental limited warranty includes specified repairs on engine, transmission, drive shaft and axles, steering, front suspension, brakes, air-conditioning and electrical components, including the Electronic Instrument Cluster and the Keyless Entry System.\*

During the period from 12 months/12,000 miles to 36 months/36,000 miles, you pay just \$50 per repair visit at your selling dealership. Coverage also includes reimbursements for towing and a rental vehicle when your automobile must be kept overnight.

\*Warranty does not cover recommended maintenance services on normal wear parts.

### **CORROSION PERFORATION WARRANTY**

Ford Motor Company offers a limited three-year corrosion perforation warranty, excluding exhaust system components on all new 1982 Lincoln-Mercury automobiles. And at no cost to you.

The warranty states that any part which, in normal use, develops perforation from corrosion within three years of retail delivery or first use will be repaired or replaced free of charge by the selling Dealer after inspection by a Ford representative. Exhaust system components or parts which develop corrosion perforation caused by accidents or other damage are not covered.

This warranty valid only in the 50 United States.

### **FORD-PAID REPAIR PROGRAMS AFTER THE WARRANTY PERIOD.**

Sometimes Ford Motor Company offers adjustment programs to pay all or part of the cost of certain repairs. These programs are intended to assist owners and are in addition to the warranty or to required recalls. Ask Ford Motor Company or your Lincoln-Mercury Dealer about such programs relating to your Ford or Lincoln-Mercury vehicle.

To get copies of any adjustment program for your vehicle or the vehicle of interest to you:

Call Ford toll-free at  
1-800-241-3673.

Alaska and Hawaii, call  
1-800-243-3711.

In Georgia, call 1-800-282-0959

or write Ford at

Ford Customer Information System  
Post Office Box 95427  
Atlanta, GA 30347

We'll need your name and address; year, make, model, and vehicle identification number, as well as engine size; and whether you have a manual or automatic transmission.

### **TECHNICAL SERVICE BULLETINS**

All vehicles need repairs during their lifetime. Sometimes Ford issues Technical Service Bulletins (TSBs) and easy-to-read explanations describing unusual engine or transmission conditions which may lead to costly repairs, the recommended repairs, and new repair procedures. Often a repair now can prevent a more serious repair later. Ask Ford Motor Company or your Lincoln-Mercury Dealer for any such TSBs and explanations relating to your Ford or Lincoln-Mercury vehicle.

To get copies of these Technical Service Bulletins and explanations for your

vehicle or the vehicle of interest to you:

Call Ford toll-free at  
1-800-241-3673.

Alaska and Hawaii, call  
1-800-243-3711.

In Georgia, call 1-800-282-0959

or write Ford at

Ford Customer Information System  
Post Office Box 95427  
Atlanta, GA 30347

We'll need your name and address; year, make, model, and vehicle identification number, as well as engine size; and whether you have a manual or automatic transmission.

### **GAS MILEAGE**

EPA estimates were not available at the time this catalog was published. Your Lincoln or Mercury, however, should post in the new EPA Gas Mileage Guide excellent miles-per-gallon ratings. See your Lincoln-Mercury Dealer for the latest information.

Specifications and descriptions used were in effect when this publication was approved for printing. Lincoln-Mercury Division reserves the right to discontinue options at any time, or change specifications, equipment, or designs without notice and without incurring obligation. Standard and optional equipment listed are subject to change. Some features described are optional at extra cost. Some options are required in combination with other options. Availability of some features may be subject to a slight delay.

Buy or lease your Lincoln or Mercury from your Lincoln-Mercury Dealer.

Litho in U.S.A. (500M) 8/8 Form No. P8118

LINCOLN-MERCURY DIVISION

