

1984 FORD RV BUYER'S GUIDE

FEATURING
TRAILER TOWING
SPECIFICATIONS



1984 RV BUYER'S GUIDE

Select the Ford Recreational Vehicle to suit Your Outdoor Interests

You've made up your mind to join the swelling ranks of those who enjoy getting out and going in the great outdoors. Now, you've got some important decisions to make: What can your budget handle for an RV outfit? How many family members and friends do you have to accommodate? How far do you plan to travel and over what kind of terrain? Will you have towing requirements? These kinds of questions should be carefully considered... and only you can make the final choices. But, along the way, Ford and your Ford dealer can help in the decision process by offering you sound advice and a wide selection of recreational and tow vehicles to fit your specific requirements.

Here are some basic rec vehicle categories to consider:

Pickup Slide-in Campers. Family favorites that are versatile and economical. You'll find a variety of Ford tough pickups available in a range of wheelbases and powertrain choices, including diesels.

Van Camper and Custom Van Conversions. In general, these rec vehicles offer twice the room of ordinary station wagons for passengers and gear. Ford's number one selling vans are ideal for custom and camper conversions, and handle trailer towing with ease.

Class C Motorhomes. Look for Class C motorhomes that give you the advantages of automotive-style travel, rugged frame construction, special RV chassis, long wheelbases and ample powertrain selections. As the number one selling Class C RV chassis cutaway cab, only Ford provides all these features.

Heavy Duty Trailering. With Ford, fifth-wheel and other heavy towing applications are accommodated up to an 18,500 lb. Gross Combined Weight —

1,000 lbs more than competition.

Once you select the RV category that fits your needs, look to Ford's leadership in the field to provide the right vehicle with the quality features and tough construction you demand.

Power/Payloads

Ford offers a wide range of powerteams to meet your payload requirements. In engines, there are powerful gas-powered V8's and a 6.9L diesel, the biggest and most powerful diesel offered currently in a light truck. Matching transmissions are available in 4- and 5-speed manual, automatic SelectShift and over-drive versions. The convenient "Power/Payload" chart shown below will help you make the proper powerteam choice for your payload and trailer towing needs.

Comfort/Convenience

Choose your level of RV comfort and convenience and Ford meets it. Roominess and driving ease are standard in a great variety of vehicles and models. A long list of options for added RV enjoyment include: trailer towing packages, AM/FM audio systems, air conditioning, tinted windshield and glass, swingaway mirrors, auxiliary fuel tank, speed control, power door locks, power windows, and more.

Quality/Value

You can be confident that any Ford product you choose will measure up to your long-range RV requirements. At Ford, quality rates number one. Ford's stringent vehicle testing procedures ensure that the product is right before it reaches the road. For you as the recreational vehicle user, this adds up to an RV purchase that assures lasting value and dependability.

Variety/Selection

Just choose your style of outdoor fun and let your Ford dealer help you select the right vehicle to match it. Your choices range from Escort, America's best selling car, to the luxurious LTD Crown Victoria; from the economical Ranger to the F-Series 4x4 diesel pickup. They're all loaded with the features and reliability to answer your recreational needs.

Trailer Towing

Having decided to tow a trailer, take your basic needs to your Ford dealer. He'll give you the information necessary to help you choose the proper vehicle for the rig you intend to tow. Ford trailer towing packages are available for light-, medium- or heavy-duty towing with a broad range of options and capabilities.

For technical details and specifications see the **RV Particulars** fold-out section in the back of this catalog.

Ford Dealer RV Expertise

You'll find Ford dealers have the expertise to translate your recreational desires into the reality of a new world of outdoor RV pleasure. For years, Ford has been working in conjunction with a number of top body building companies in the industry to develop unique new rec vehicle combinations. The results of these efforts can be seen at your Ford dealer's showroom.

The Chart below is based on a Gross Combination Weight Rating (GCWR). To determine this rating establish the total weight of your loaded trailer. Add this figure to the estimated combined weight of the tow vehicle, additional equipment, and passengers. The result is the GCWR.

POWER/PAYLOAD

See accompanying model charts for maximum trailer weight for each powertrain offering

GROSS COMBINED WEIGHT RATING (GCWR)*	4500	5500	6000	6450	7500	7800	7900	8000	8150	9200	10000	10500	11000	11500	12000	12500	14000	15000	15500	16000	17000	17250	18500
ENGINE/AXLE RATIO																							
†2.0L I-4 MAN	(*)																						
†2.2L I-4(0) MAN	(*)																						
†2.3L I-4 MAN	(S)																						
AUTO		(4)	(8)																				
†2.8L V-6 MAN	(S)																						
AUTO			(3)		(4)			(8)															
4.9L I-6 MAN				(3)		(5)	(5)	(9)			(9)	(8)	(9)										
AUTO									(1)		(5)	(8)	(9)										
5.0L V-8 MAN				(3)		(7)																	
AUTO											(5)	(8)											
5.8L V-8 MAN					(5)								(9)										
AUTO												(5)	(6)	(8)	(9)								
7.5L V-8 MAN										(2)			(6)						(9)				
AUTO														(2)		(6)			(8)	(9)			
6.9L V-8(D) MAN										(2)						(6)			(9)				
AUTO															(2)		(6)		(9)				

- (1) 3.00 (7) 3.55
- (2) 3.07 (8) 3.73
- (3) 3.08 (9) 4.10
- (4) 3.45 (S) Standard
- (5) 3.50
- (6) 3.54

- Bronco F-Series
- F-Series
- Econoline

*GCWR not to exceed GVWR on Ranger or F-Series with manual brakes or Ranger with 2.0L I-4 or 2.2L I-4(D) engines.

†Assumes maximum trailer frontal area of 25 square feet.

NOTE: Consult your Ford dealer regarding powertrain availability in California

FORD PICKUPS... A FIRM RV FOUNDATION

Once you've chosen your favorite slide-in camper unit, your pick for a pickup should be Ford. The choosing's wide and really satisfying when you see how Ford meets your RV needs for camping and trailering enjoyment with a selection of 2-wheel and 4-wheel drive vehicles.



Entire F-Series Lineup offers Camper Certified Pickups

With the F-150 pickup now available in a camper certified GVW, there's a Ford F-Series model sized to meet your camper needs. Equipped with big gas and diesel V8's, F-Series pickups handle even those large slide-in campers with ease. You get a wide selection, too, in cabs with seating capacity and spaciousness to fit your outdoor lifestyle.

Regular Cab pickups seat three grownups in living-room comfort and feature a folding bench seat back for access to a convenient storage area behind the seat.

Ford SuperCab pickup is the only full-size, extended cab model you can buy. It's available with both 2- and 4-wheel drive, with an engine line-up that includes the 6.9L diesel and 7.5L V8 engines. This SuperCab is roomy, with 37.4 cu. ft. of loadspace for baggage and camping gear. For family room, add the optional full-width bench seat in back and there's space for six.

Ford Crew Cab pickups are just plain comfortable and convenient, and will easily seat six adults. There are two full-width bench seats and four big doors for easy entry and exit. Crew Cab is now available with the 7.5L V8 engine as well.

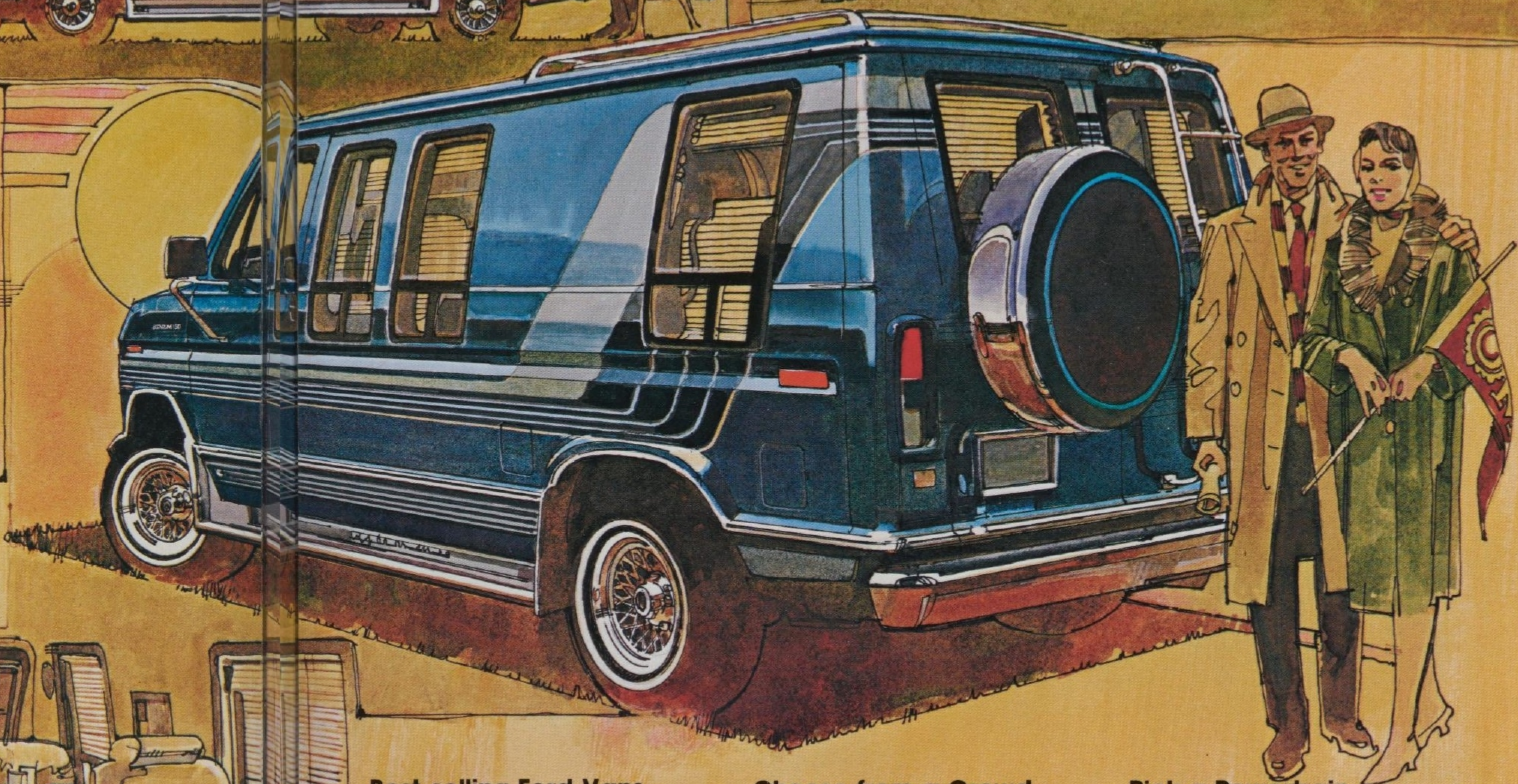
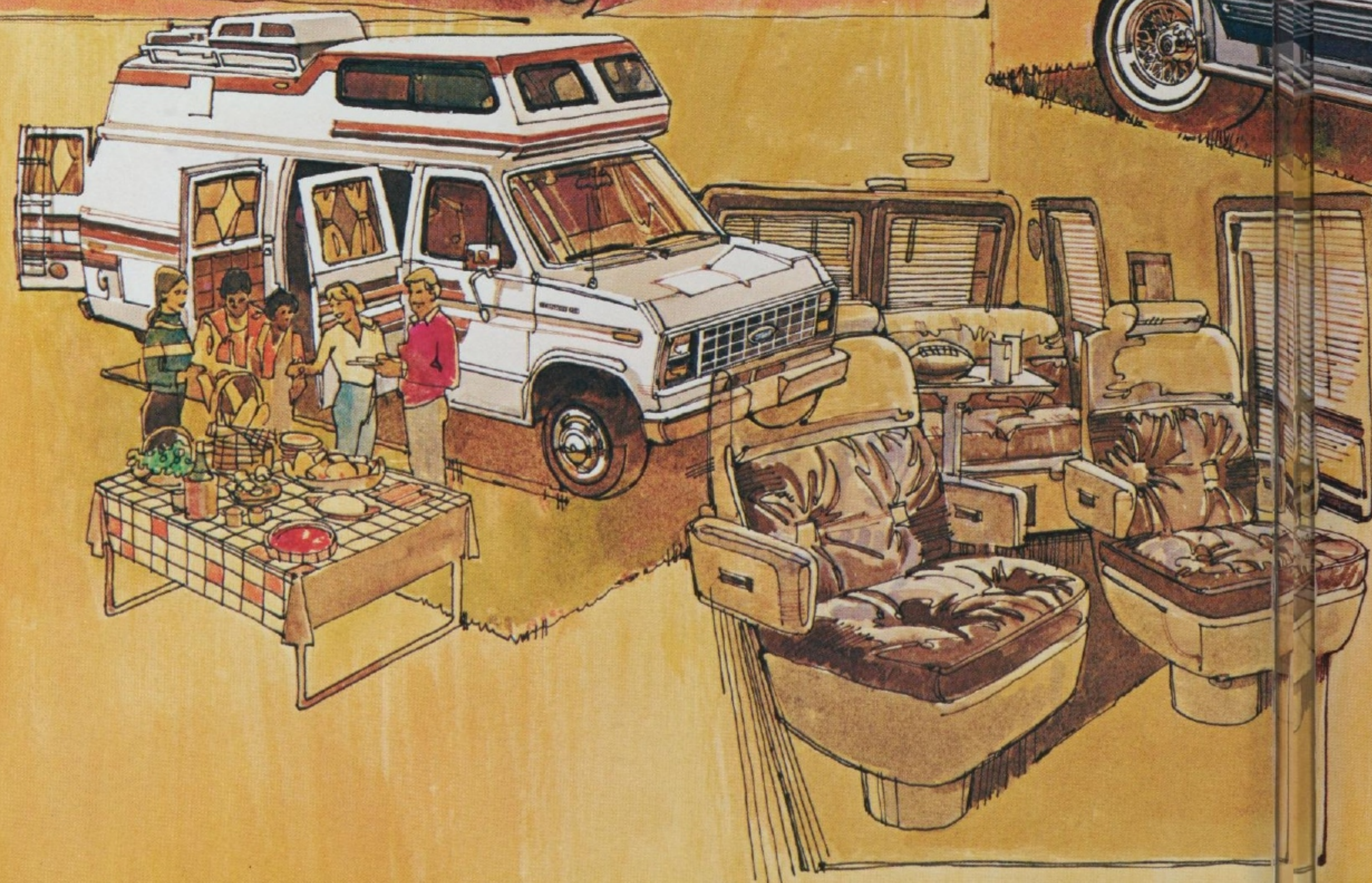
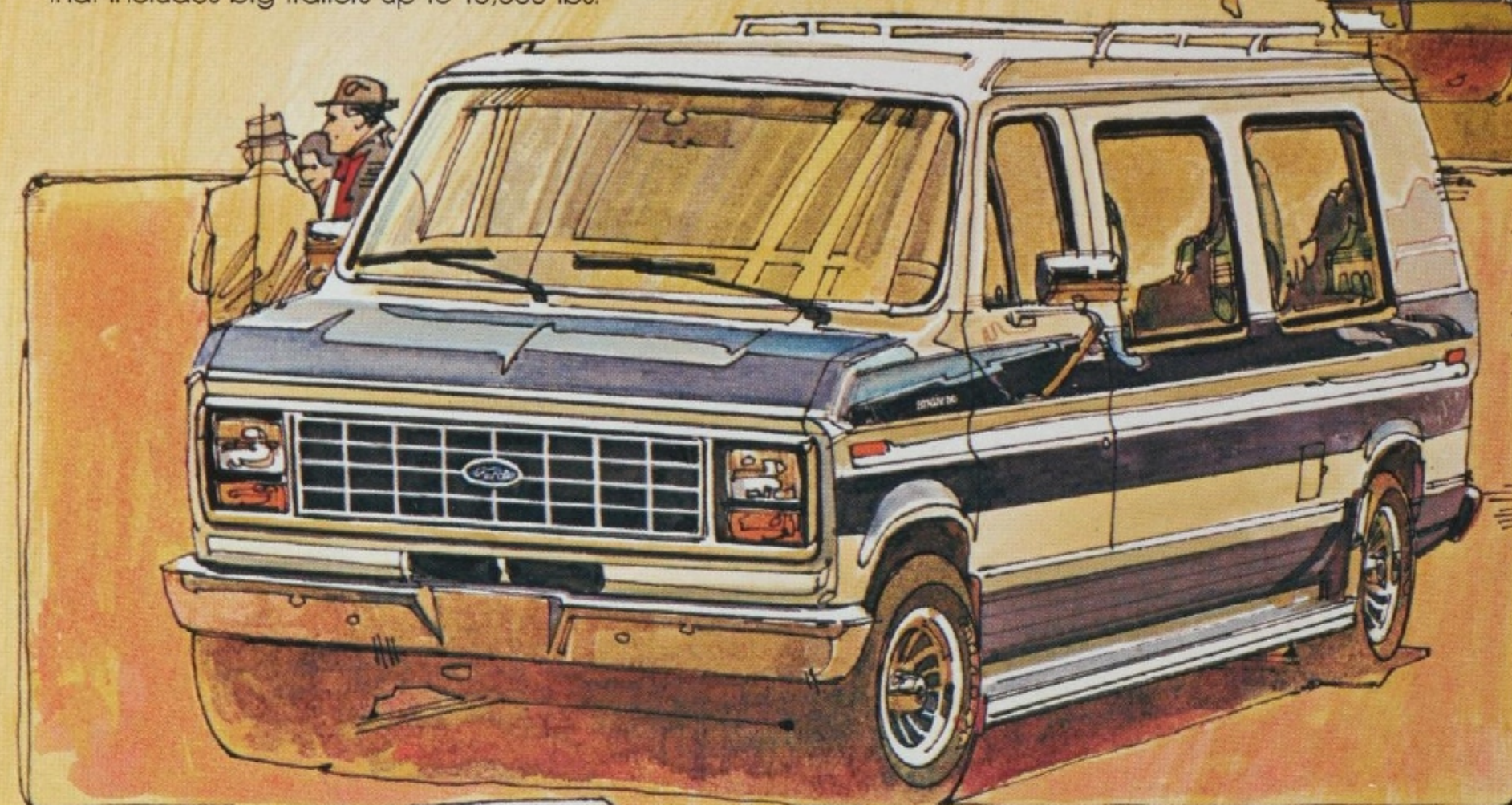
Try Ranger fun in 4x2 and 4x4 versions

You've got a firm foundation for camper caps, slide-ins and/or serious trailer towing with Ranger's sturdy ladder-type frame, plus Ford's tough double-wall construction in the roof, hood, doors, box-sides and tailgate. Like the F-Series, Ranger's convenient tailgate removes in seconds so you can just slide the camper securely in place. Equip Ranger with the optional Camper Package and it handles a variety of camper bodies, subject to topside limits regarding size, weight and center of gravity location.

For technical details and specifications see the **RV Particulars** fold-out section in the back of this catalog.

FORD ECONOLINE VANS AND CLUB WAGONS... FOR THE FAN OF THE ROOMIER VAN

Ford Econoline Vans and Club Wagons are not only perfect for camper and custom conversions, but they are also designed and built with all the Ford features to make them ideal for trailer towing. And, that includes big trailers up to 10,000 lbs.



Best-selling Ford Vans and Wagons are built Ford Tough

As the only manufacturer of body-on-frame vans, Ford's construction gives you a tough, rigid chassis with ladder-type truck frame that provides a solid foundation for camper and custom conversions. Adding to riding comfort are rubber body mounts that isolate the body (and passengers) from the frame. Twin I-Beam independent front suspension is designed for ruggedness, while imparting a comfortable, smooth ride.

Out-front hood design permits easier entries and exits, gives you ample space to move around in the front passenger compartment, plus the convenience of under-the-hood servicing of 28 key maintenance items.

Choose from a Crowd-Pleasing Selection of Comfortable, Convenient, Roomy Models.

For sheer size, Ford Vans and Club Wagons give you virtually twice the room of regular station wagons with spacious seating for up to 15 passengers. The seating is luxurious, too, with Dual and Quad Captain's chairs that swivel and recline. Your choice of 124-in. and 138-in. wheelbase models allow for a variety of conversion floor plans. From van campers to luxurious customized van conversions, Ford dealers work with a large pool of body customizing firms to meet your special requirements. Plus you can order a number of Ford options to add to your RV enjoyment: Regular and high-capacity air conditioners, power doorlocks, AM/FM stereo with cassette tape player, speed control, privacy glass, and auxiliary fuel tank to name just a few.

Pick a Powertrain with more Horsepower

When it comes to engines, gas-powered or diesel, Ford has got you covered. The 6.9L diesel is the biggest and most powerful in the field. The standard 4.9L I-6 provides high-torque performance and fuel efficiency. For V8 power there are three choices — 5.0L, 5.8L, and the hefty 7.5L with a Gross Combined Weight rating of 17,250, for heavy trailer towing. For outstanding performance, the new 5.8L HO engine with 4-barrel carburetor currently develops 27% more horsepower than its closest competitor for models under 8,500 lbs. GVWR (available late 1983).

Transmission choices include the gas-saving automatic overdrive option, (with 4.9L and 5.0L engines), optional Select-Shift automatic and the 4-speed manual overdrive, (E-150 models with 4.9L engine, standard in Club Wagon).

For technical details and specifications see the **RV Particulars** fold-out section in the back of this catalog.

MOVE TO THE HEAD OF THE CLASS C MOTORHOME CLASS... WITH FORD

Current sales indicate that the versatile Class C motorhome is regaining its RV popularity. And Ford, maker of the number one Class C motorhome chassis cutaway cab in the industry, offers product advantages that serve to make this rec vehicle category even more attractive to outdoor enthusiasts.



Enjoy the Familiarity of an Automotive Transportation Setting

Slide into the driver's seat of a Ford RV chassis cutaway cab and right away, you feel at home. The doors have roomy openings and provide ease of entry with their low step-height. The surroundings are friendly, convenient to use and spacious. You're seated at the controls in a customary driving position with a familiar automotive-style instrument panel before you. In short, Ford gives you the proper setting for driver and passengers to enjoy the comfort, ride, and conveniences of operating a spacious, luxurious motorhome.

Selection of RV Chassis Cutaway Cab and Wheelbase

Rugged body-on-frame construction, a Ford exclusive, and long wheelbase availability make the Ford RV chassis cutaway cab the ideal choice for most popular motorhome floorplans. Full-length siderails and seven crossmembers form the tough frame construction. Ford's unique rubber body mounts and frame spacers positioned at key points along the siderails help eliminate road vibrations and harshness. The special RV chassis, with the rear of the driver's compartment cut away, easily accommodates modern motorhomes of up to 30 feet in length. Long wheelbases of 138, 158, and 176 inches handle RV motorhome bodies offering spacious living area and GVW ratings up to a strapping 11,000 pounds, another Ford exclusive.

Ford Features Give You More in Motorhome Advantages

When you specify Ford for your motorhome, you're getting the class of Class C. Ford gives you the power you need with a 6.9L diesel, the biggest and most powerful in the field. For gas power, there's a big 7.5L V8 with ample horsepower for the most demanding motorhome applications. Ford's out-front design provides extra driver room, passenger room, and walk-through convenience. Another out-front advantage: The hood opening allows service checks of 28 items, all handled quickly and simply from the front of the vehicle. Remember, Ford vans are the number one seller! And, their RV chassis cutaway cabs form the Class C motorhome foundation. So take advantage of the quality and dependability you get from Ford.

For technical details and specifications see the **RV Particulars** fold-out section in the back of this catalog.

GET WITH THE TOUGH FORD TRAILERING TEAM

Whatever your trailering taste, you'll find a Ford vehicle that's satisfying. Your range of choices includes everything from an outdoorsman's Bronco to a luxurious LTD Crown Victoria to the number one selling Ford Escort. Any Ford you choose will provide the quality and features you expect to meet your trailering needs. Here are just a few examples.



Ford Bronco and Bronco II

These popular 4-wheelers are the ideal off-roaders for hunting, fishing, and just for fun. And when it comes to trailer towing chores Bronco can handle up to 6,400 lbs., Bronco II up to 4,500 lbs., with optional equipment added. They're typically Ford Tough.

Ford LTD Crown Victoria

LTD Crown Victoria is synonymous with quiet luxury. This elegant full-size Ford carries six passengers in a luxurious interior while providing superior towing capabilities. LTD Crown Victoria and its station wagon counterpart, Country Squire, handle towing up to 5,000 lbs. with optional Heavy-Duty Towing package.

Ford Escort

Rated for trailers up to 1,000 lbs., the world's best-selling Ford Escort gives you front-wheel drive traction and surprisingly comfortable seating for four. Best of all, with its gas-slingy engine Escort lives up to its reputation as a fuel economy leader.

Ford Tempo

In Tempo, Ford's newest edition, performance and economy are not at odds. Tempo's aerodynamic shape helps enhance ride and handling stability, even when pulling trailers up to 1,000 lbs.

Thunderbird

Personal luxury with aerodynamic styling mark that new Thunderbird. It's the driver's car that's also engineered for trailering. The standard 3.8L V-6 with its advanced combustion chamber design and valve porting is teamed with fuel efficiency. Thunderbird's suspension and steering systems were chosen to provide a smooth ride and good road manners.

For technical details and specifications see the **RV Particulars** fold-out section in the back of this catalog.



THINKING BIG? THINK FORD FOR HEAVY-DUTY TRAILER TOWING

No matter what kind of recreational vehicle you prefer, Ford provides the power you need to move it. And that includes light- and medium-duty trailering as well as fifth wheel applications and big-trailer towing.



Opt for Diesel Performance and Economy

Ford's heavy-duty 6.9L V-8 diesel engine offers true truck hauling capability with the advantage of diesel fuel economy. In fact, the 6.9L is simply the biggest and most powerful light-truck diesel engine available in the trailer towing field. It provides a great combination of high cubic-inch performance and traditional diesel fuel operating savings. Its low weight-to-horsepower ratio of only 4.70 lbs. per horsepower is ideal for fifth wheel rigs and heavy towing where engine efficiency is crucial. Trailer

towing capacity goes up to 15,500 lb. Gross Combined Weight rating.

You can team this powerful diesel with a 4-speed manual transmission that's synchronized in all forward gears for easier shifting. Or choose the SelectShift transmission for the ease of automatic shifting.

Go with Ford's Highest Performance Gas V-8 Power

The 7.5L is the largest Ford gas V-8 you

can buy for heavy-duty trailer-towing applications. Teamed with the standard 4-speed manual gearbox, or optional automatic, it's an ideal performer for hauling big campers and trailers.

The new 5.8L HO V-8, with 4-barrel carburetion offers a new level of performance in under 8500 lbs. GVWR applications, towing up to 8700 lbs. maximum trailer weight.

The 5.0L V-8 is a proven workhorse for medium and light-duty RV use.

For technical details and specifications see the **RV Particulars** fold-out section in the back of this catalog.

RV PARTICULARS

Just like driving a car, hauling a slide-in camper or towing a trailer can be an enjoyable experience as long as your vehicle is equipped to handle the job, and is used and maintained properly. By reviewing the charts that follow and talking to your Ford dealer you'll be better able to choose the proper vehicle for the job.

It all begins with the basic question, "What are you going to tow?" Consider what your camper or trailer towing plans

will be, both now and in the foreseeable future, with the key element being the gross weight of the rig to be towed.

Using this gross weight information, you can match the tow vehicle, rig and auxiliary equipment to form a combination that will help ensure that your vehicle will perform to your expectations.

When hauling trailers over 2,000 lbs., a load-equalizing hitch should be used. The equalizing hitch is designed to distribute the weight of the trailer and tow-

that are qualified for slide-in camper bodies will have maximum camper/cargo weight and center-of-gravity location information included on the Truck Consumer Information Sheet placed in the glove box of each pickup vehicle. In addition, Ford specifies certain Required Minimum Equipment and Recommended Equipment to assure that your vehicle includes the components needed to meet your camper or trailering needs.

SLIDE-IN CAMPER DATA RANGER & F-SERIES PICKUPS

Minimum Equipment Required/Recommended

DRIVE		4x2								4x4								
SERIES		RANGER	F150	F250			F350		RANGER	F150	F250			F350				
GVWR* (Required Minimum)		4380	4420	6100	6300	8500	8800	8700	8700	10000	4420	4480	6250	6600	8600	8600	9000	9300
PAYLOAD PACKAGE (Required Minimum)	#1				●			●	●	D				●				●
	#1X					●	●								●	●		
	#2										●	●	●					
	#3	●	●	●														
WHEELBASE/ CAB TYPE	107.9"/Regular	●									●							
	113.9"/Regular		●									●						
	133"/Regular			●	●	●		●		●			●	●	●		●	
	155"/Super						●									●		
	168"/Crew							●										●
TIRES (Required Minimum)	P195/75R15SL										●	●						
	P205/75R14XL	●	●											●				
	P235/75R15XL			●				●	●	●								
	STANDARD					●	●	●	●	●					●	●	●	●
ENGINE	2.3L I-4	●	●								●	●						
	2.8L V-6	●	●								●	●						
	All V-8's			●	●	●	●	●	●	●			●	●	●	●	●	●
AXLE RATIO	3.45	2	2								2	2						
	3.54				2	2	2							5	1	1		
	3.55			4									4					
	3.73								3									
	4.10							3		3							3	3
TRANSMISSION		Ranger is available with all transmissions. F-Series requires 4-Speed manual (except overdrive) or automatic.																

*The combined weight of any camper body, occupants and equipment when added to the vehicle weight must not exceed the vehicle GVW rating.

NOTE: On Ranger, the combined frontal area of the vehicle and camper must not exceed 45 square feet.

- 1 4.10 Ratio w/5.8L V-8 engine
- 2 3.73 Ratio w/2.3L I-4 and 5.8L V-8 engines
- 3 3.54 Ratio w/7.5L V-8 engine
- 4 3.50 Ratio w/5.8L V-8 engine

- 5 4.10 Ratio w/5.8L 2V V-8 engine
3.54 Ratio w/5.8L 4V V-8 engine
- D Dual Rear Wheels

REQUIRED EQUIPMENT:

Ranger

- Camper Package which includes:
 - Payload Package, tires, axle ratio as shown in chart
 - H.D. F/R shock absorbers
 - H.D. F/R springs
 - F/R stabilizer bars

F-Series

- F/R stabilizer bars

RECOMMENDED EQUIPMENT:

Ranger

- 2.8L V-6 Engine w/4 x 4's
- Automatic Transmission (includes Aux. Oil Cooler)
- 63 Amp Battery
- Super Cooling
- Gauge Package
- Low-Mount Mirrors

F-Series

- Camper Package which includes:
 - 60 Amp Alternator†
 - 63 Amp-Hr Battery†
 - Gauge Package
 - Low-Mount Mirrors
 - Extra Engine Cooling††
 - Handling Package
 - Wiring Harness for trailer towing
 - Engine Oil Cooler (7.5L V-8)
 - Aux. Auto. Trans. Cooler
 - H.D. Turn Signal Flasher

† Except 6.9L V-8(D) engine

††Except 6.9L V-8(D) and 7.5L V-8 engines

TRAILER TOWING DATA

The charts that follow, along with the Power/Payload chart showing Gross Combined Weight Rating (GCWR) for each Ford powertrain, will assist you in selecting the Ford vehicle that is best suited for the trailer towing job you have to do.

The charts are based on model and maximum trailer weight for your convenience. It should be noted that the trailer weights shown assume a driver (150 lbs), no passengers and no weight in the pickup box. The weight of additional passengers, options, or cargo decrease maximum trailer weight accordingly.

Of equal importance are the listings of Required and Recommended Equipment. Required Equipment (minimum) is deemed essential to assure that your vehicle includes the necessary powertrain and suspension components to meet the additional ride, handling and performance requirements of hauling your camper or trailer. Recommended Equipment is deemed necessary to assure that your vehicle includes the proper combination of comfort, convenience and performance features to fully meet your camper or trailer towing needs.

Finally, on the subject of trailer towing, several things must be kept in mind:

- **Trailer Hitches** — When hauling trailers over 2,000 lbs., a load equalizing hitch should be used. The equalizing hitch is designed to distribute the weight of the trailer and towing vehicle equally between the axles of both the vehicle and the trailer. For trailers under 2,000 lbs., a simple, non-equalizing hitch is usually sufficient.
- **Trailer Brakes** — Separate trailer brakes are recommended and required on most trailers weighing over 1,500 lbs. Check state requirements and trailer manufacturers' recommendations for brake system installation and adjustment. Ford Motor Company does not recommend trailer braking systems that have a direct hydraulic brake fluid connection with the towing vehicle's braking system. Any trailer brake control system utilizing a connection to the towing vehicle's hydraulic fluid system may increase the towing vehicle's stopping distance.
- **Safety Chains** — Always use safety chains between your vehicle and trailer. This will avoid danger to road users if the hitch fails. Cross chains and allow enough slack for turning corners. Connect safety chains to the vehicle frame or hook retainers. Never attach safety chains to the bumper. For rental trailers, follow rental agency instructions for proper hookup of safety chains.
- **High Altitude Performance** — In a high altitude operating environment, gasoline and diesel engines lose power at the rate of 3% to 4% per 1,000 ft. elevation. For these high altitude operating conditions, a reduction in gross vehicle weights and gross combination weights is recommended (1% to 2% per 1,000 ft. elevation) and will result in improved vehicle performance.

F-150/F-250 (under 8500 lbs. GVWR) 2- AND 4-WHEEL DRIVE

TRAILER WEIGHT (MAX.)(G)		2100	2350	2400	2650	2700	3000	3400	3500	3600	3700	3800	3900	4000	4200	5200	5500	5700	5900	6200	6300	6400	6800	7100	7700	8100	8200	8700	
MODEL	F-150 4x2		●		●	●				●	●			●	●				●	●	●		●						
	4x4	●		●			●	●	●	●	●	●				●						●	●						
	F-250 4x2																●		●						●		●	●	
	4x4									●								●						●		●	●	●	
CAB TYPE	REGULAR			●		●			●	●	●	●	●	●	●	●				●	●	●			●	●	●	●	
	SUPER	●	●				●	●	●		●				●		●		●	●			●			●	●	●	
ENGINE/ TRANSMISSION	4.9L I-6 MAN 3										●			●															
	MAN 4						●			●		●																	
	MAN 4 OD	●		●	●										●														
	AUTO														●	●	●	●	●	●	●								
	5.0L V-8 MAN 3			●		●															●								
	MAN 4							●	●		●		●									●							
	MAN 4 OD		●						●			●			●														
	AUTO																●	●	●										
	AUTO OD																	●	●	●	●	●							
	5.8L V-8 MAN 4					●			●	●			●									●							
	MAN 4 OD							●			●																		
	AUTO																												
AXLE RATIO	Standard except where noted						7				7	7		6	7	6			7	7							9	8	9

6 3.54 7 3.55 8 3.73 9 4.10 (a) GCWR not to exceed GVWR on vehicles with manual brakes

F-250HD (over 8500 lbs. GVWR) 2-AND 4-WHEEL DRIVE

TRAILER WEIGHT (MAX.)		4000	4400	4800	5200	5600	6000	6400	6800	7200	7600	8000	8400	8800	9200	9600	10000
MODEL	F250 4x2 4x4	●	●	●	●	●	●	●	●	●	●	●	●	●	●	●	●
CAB TYPE	REGULAR		●	●			●	●	●	●	●	●	●	●	●	●	●
	SUPER	●	●		●	●	●		●	●	●		●		●	●	●
ENGINE/TRANSMISSION	4.9L I-6 MAN			●			●										
	AUTO				●												
	5.8L V-8 MAN					●		●	●								
	AUTO							●									
	7.5L V-8 MAN	●		●					●								
	AUTO																
	6.9L V-8[D] MAN	●		●													
	AUTO								●								
AXLE RATIO	Standard except where noted				8 9			9 9	8 6		9 9	6		9 9 9		9 6 6	9 6 6 9 9

6 3.54 8 3.73 9 4.10

F-350 2-AND 4-WHEEL DRIVE

TRAILER WEIGHT (MAX.)		4100	4300	4700	5200	5800	5900	6100	6200	6300	6400	6500	6600	6700	6800	7000	7100	7200	7400	7600	7700	7800	7900	8000	8200	8700	8800	9000	9500	9700	9800	9900	10000				
MODEL F350	4x2	●	●	●	●	●			●	●		●	●	●	●	●	●	●	●	●	●	●	●	●	●	●	●	●	●	●	●	●	●	●			
	4x4	●					●				●		●		●	●	●			●	●	●		●	●	●	●	●	●				●	●			
CAB TYPE	REGULAR		●	●							●	●	●	●	●	●	●			●	●	●	●	●	●	●	●	●	●	●	●	●	●	●			
	CREW	●			●	●	●	●	●	●	●							●	●		●							●		●				●	●		
ENGINE/ TRANSMISSION	4.9L I-6 MAN				●																																
	AUTO					●			●																												
	5.8L V-8 MAN					●	●		●		●			●																							
	AUTO							●	●		●																										
	7.5L V-8 MAN	●		●				●			●			●	●	●	●	●	●																		
	AUTO																	●	●	●	●	●	●	●													
	6.9L V-8[D] MAN		●																	●																	
	AUTO																	●										●	●								
AXLE RATIO	Standard except where noted				8			9	9		6	9			9	6				9			9	9			6					9	6	6	9	9	9

D Dual Rear Wheels **6** 3.54 **8** 3.73 **9** 4.10

ECONOLINE VAN

TRAILER WEIGHT (MAX.)		3200	3500	3700	3800	4100	4700	4800	5300	5500	5700	5800	6200	6300	6500	6600	6700	6900	7000	7100	7200	7400	7600	7700	8400	8600	9900	10000	
MODEL	E150																												
	E250	●	●		●	●		●		●	●	●		●	●	●		●				●							
	E350					●			●	●			●	●			●	●	●	●		●			●	●	●	●	
VAN TYPE	REGULAR	●		●	●	●	●					●	●	●		●	●	●	●			●			●	●	●	●	
	SUPER	●	●				●	●			●	●		●		●	●	●	●	●	●	●			●	●	●	●	
ENGINE/ TRANSMISSION	4.9L I-6 MAN 3	●	●	●	●	●																							
	MAN 4 OD		●	●	●																								
	AUTO						●	●	●	●	●	●	●																
	AUTO OD							●	●	●	●	●																	
	5.0L V-8/AUTO OD							●	●	●	●	●		●	●							●	●	●	●	●	●	●	
	5.8L V-8/AUTO							●	●	●	●	●				●	●	●	●	●	●	●	●	●		●	●	●	
	7.5L V-8/AUTO																	●	●										
6.9L V-8(D)/AUTO																		●	●					●	●	●	●		
AXLE RATIO	Standard except where noted		5	5						5	5		9	9						8	8	9	9			6	9	6	9

5 3.50 6 3.54 8 3.73 9 4.10

FIFTH WHEEL TRAILER TOWING F-SERIES 4-WHEEL DRIVE

TRAILER WEIGHT (MAX.)		5700	5900	6100	6300	6500	6700	6800	7000	7100	7400	7600	7900	8000	8100	8400	8700	9400	9700	9800	9900	10200		10300	10600	10800	11100	11200	12300	
MODEL	F150		●					●																						
	F250 F250 HD	●			H		H	H		H							H	H	H								H		H	
	F350			●								H			H		H	H		●	●								H	●
CAB TYPE	REGULAR	●	●			●		●		●				●			●		●		●				●				●	●
	SUPER		●		●			●		●				●			●												●	●
	CREW			●							●							●				●					●			●
ENGINE/ TRANSMISSION	4.9L I-6 AUTO	●	●																											
	5.0L V-8 AUTO	●	●																											
	5.8L V-8 AUTO						●		●		●		●		●															
	7.5L V-8 MAN			●	●	●		●																			●	●	●	
	AUTO																				●									●
	6.9L(D) V-8 MAN																●	●												●
	AUTO																		●	●										●
AXLE RATIO	Standard except where noted										9		9	9							9		9	9	9	9	9	9	9	9

H Heavy Duty; increase trailer weight by 350 lbs. for Regular Cab Chassis Cab models **9** 4.10

FIFTH WHEEL TRAILER TOWING F-SERIES 2-WHEEL DRIVE

TRAILER WEIGHT (MAX.)		5900	6200	6300	6400	6500	6700	6800	7000	7100	7200	7500	7700	7800	7900	8000	8300	8400	8700	8800	9100	9200	9800	10000	10100	10200	10300	10600	10700	10900	11200	11500	11600	12300
MODEL	F150 F250 F350	●	●	●	H	H	●	●	●	●	H	●	●	●	H	H	●	H	●	H	●	H	H	●	●	H	H	H	●	H	H	●	H	H
CAB TYPE	REGULAR SUPER CREW	●	●	●	●	●	●	●	●	●	●	●	●	●	●	●	●	●	●	●	●	●	●	●	●	●	●	●	●	●	●	●	●	●
ENGINE/ TRANSMISSION	4.9L I-6 AUTO 5.0L V-8 AUTO 5.8L V-8 AUTO 7.5L V-8 MAN AUTO 6.9L V-8(D) MAN AUTO	● ● ● ● ● ●	● ● ● ● ● ●	● ● ● ● ● ●	● ● ● ● ● ●	● ● ● ● ● ●	● ● ● ● ● ●	● ● ● ● ● ●	● ● ● ● ● ●	● ● ● ● ● ●	● ● ● ● ● ●	● ● ● ● ● ●	● ● ● ● ● ●	● ● ● ● ● ●	● ● ● ● ● ●	● ● ● ● ● ●	● ● ● ● ● ●	● ● ● ● ● ●	● ● ● ● ● ●	● ● ● ● ● ●	● ● ● ● ● ●	● ● ● ● ● ●	● ● ● ● ● ●	● ● ● ● ● ●	● ● ● ● ● ●	● ● ● ● ● ●	● ● ● ● ● ●	● ● ● ● ● ●	● ● ● ● ● ●	● ● ● ● ● ●	● ● ● ● ● ●	● ● ● ● ● ●	● ● ● ● ● ●	● ● ● ● ● ●
AXLE RATIO	Standard except where noted	7	7 9		9 6 6			9 6		6			9			9 9	9 9	9 9	9 6	6 6	6 6	6 6	6 6	6 6	6 6	6 6	6 9	6 9	6 9	9 9	9 9	9 9	9 9	9 9

6 3.54 **7** 3.55 **9** 4.10 **H** Heavy Duty: increase trailer weight by 350 lbs. for Regular Cab Chassis Cab models. ***** Increase trailer weight by 350 lbs. for Chassis Cab models.

CLUB WAGON

TRAILER WEIGHT (MAX.)		3500	4700	4900	5500	5600	5700	5900	6100	6300	6400	6500	6600	7000	7100	7300	8900	9200	9300	9400	9600	9700	10000		
MODEL	E150	●	●		●		●				●										●	●	●		
	E250		●	●			●	●	●		●	●	●							●	●	●	●		
	E350				●	●				●			●	●	●	●			●	●				●	
WAGON TYPE	REGULAR	●	●	●	●	●	●	●	●	●	●	●	●	●	●	●		●			●	●	●	●	
	SUPER		●		●		●		●	●		●	●	●	●		●		●	●	●		●	●	
ENGINE/ TRANSMISSION	4.9L I-6 MAN. 4 OD	●																							
	AUTO		●	●	●		●	●	●																
	AUTO OD				●		●																		
	5.0L V-8 AUTO OD				●																				
	5.8L V-8 AUTO							●	●		●	●		●	●	●							●	●	
	7.5L V-8 AUTO									●	●		●		●	●							●	●	
6.9L V-8(D) AUTO																●	●	●			●		●		
AXLE RATIO	Standard except where noted	5				5	9	9						9	9	9			6	6	9	9	6	9	9

5 3.50 6 3.54 9 4.10

Illustrations and information presented herein were correct when approved for printing. Ford Division reserves the right to discontinue or change at any time specifications or designs without incurring obligations. Some features shown or described are optional at extra cost. Most options offered on all models. Some options are required in combination with other options. Always consult your Ford Dealer for the latest most complete information on models, features, price and availability.

Camper units and other vehicle modifications shown within are performed through establishments not connected with Ford Motor Company. Availability, price, quality, safety and durability of these modifications rest solely with the respective manufacturers and Ford assumes no responsibility for their use.

While EPA mileage estimates were not available at the time this brochure was approved for printing, Ford Cars and Trucks are expected to post as good or better mileage ratings than they did last year. As soon as EPA figures are released, your Ford Dealer will be among the first to have this information and will be happy to pass it along to you.

NOTE: Consult your Ford dealer regarding powertrain availability in California.

TRAILER TOWING DATA

FORD CARS

TRAILER WEIGHT (MAX.)		1000	2000	3500*	5000*
MODEL	EXPESCORT	●			
	MUSTANG	●	●		
	TEMPO	●	●		
	LTD		●	●	
	THUNDERBIRD		●	●	
LTD CROWN VIC./COUNTRY SQUIRE				●	●
ENGINE/TRANSMISSION (MIN)	1.6/MAN	●			
	2.3/STD	●	●		
	3.8/AUTO	●	●	●	
	5.0/AUTO		●	●	●

*Require Trailer Towing Package and Load Equalizing Hitch

BRONCO 4-WHEEL DRIVE

TRAILER WEIGHT (MAX.)		3100	3200	3300	5500	6400
ENGINE/TRANSMISSION	4.9L I-6 MAN 4		●			
	MAN 4 OD		●			
	AUTO				●	
	5.0L V-8 MAN 4	●				
	MAN 4 OD			●		
	AUTO				●	
5.8L V-8 MAN 4	MAN 4 OD	●				
	AUTO		●			●
AXLE RATIO		Standard except where noted				
			7			

7 3.55

TRAILER TOWING PACKAGE* CONTENTS

MODEL:		BRONCO II	RANGER	BRONCO	F-SERIES	E-SERIES
COOLING:	SUPER/EXTRA	S	S	S	E	E
	AUX. AUTO. TRANS. OIL	●	●	●	●	●
	7.5L V-8 ENGINE OIL				●	●
ELECTRICAL:	H.D. BATTERY			●	●	●
	60 AMP ALTERNATOR			●	●	●
	WIRING HARNESS	●	●	●	●	●
	H.D. TURN SIGNAL FLASHER	●	●	●	●	●
SUSPENSION:	OPTIONAL PAYLOAD PKG.	●	1			
	HANDLING PKG.			●	●	
	SHOCK ABSORBERS, H.D. F/R					●
OTHER:	LOW MOUNT MIRRORS				●	●
	GAUGE PACKAGE				●	●
	DUAL ELECT. HORNS				●	●

1 Payload Package #3 on 4x2, #2 on 4x4

*Packages on Ford LTD, Thunderbird, Crown Victoria, and Country Squire vary in content with certain powertrains. See individual car catalogs for contents.

RANGER/BRONCO II 2- AND 4-WHEEL DRIVE

TRAILER WEIGHT (MAX.) (a)		1000	1100	1400	1600	1700	2700	3100	3200	4000	4400	4500	4600	4900	5100 (b)
MODEL	RANGER 4x2	●			●	●	●	●	●						
	RANGER 4x4			●										●	
	BRONCO II 4x4		●							●		●			
ENGINE/TRANSMISSION	2.0L I-4 MAN	●													
	2.2L I-4(D) MAN	●													
	2.3L I-4 MAN 4			●		●									
	MAN 5 OD			●	●										
	AUTO					●		●							
	2.8L V-6 MAN		●	●	●					●	●	●	●	●	●
	AUTO							●		●	●	●	●	●	●
	AXLE RATIO	Standard except where noted													
									8			8	4	8	8

4 3.45 8 3.73

(a) Assumes maximum trailer frontal area of 25 sq. feet. GCWR not to exceed the GVWR on vehicles with manual brakes on 2.0L I-4 or 2.2L I-4(D) engines.

(b) 5000 lb. maximum trailer weight with 113.9" wheelbase.

REQUIRED EQUIPMENT:

TRAILER TOWING PACKAGE

- Bronco II (w/trailer over 800 lbs.)
- Ranger (w/trailer over 1,000 lbs.)
- LTD, Thunderbird, LTD Crown Victoria (w/trailer over 2,000 lbs.)

EXTRA COOLING (MINIMUM)

- F-Series, Econoline, Club Wagon (w/trailer over 2,000 lbs.)

SUPER COOLING

- F-Series fifth wheel applications w/7.5L V-8 engine
- Bronco (w/trailer over 2,000 lbs.)

FRONT AND REAR STABILIZER BARS

- F-Series single rear wheel models with weight distributing hitch and GCWR over 17,400 lbs.

2.3L I-4 OR

2.8L V-6 ENGINE

- Ranger 4x2 (w/trailer over 1,000 lbs.)

H.D. FRONT AND REAR SHOCK ABSORBERS

- Fifth wheel applications on 136.8" and 160.8" wheelbase Chassis Cab

REQUIRED TONGUE LOAD:

10-15% OF TRAILER WEIGHT

- Bronco II, Ranger

10-15% OF TRAILER WEIGHT

(200 LBS. MAX. FOR TRAILERS UP TO 2,000 LBS.)

- Bronco, F-Series, Econoline, Club Wagon

25% OF TRAILER WEIGHT

- F-Series fifth wheel applications

RECOMMENDED EQUIPMENT:

WEIGHT CARRYING HITCH OR REAR STEP BUMPER

- All models (w/trailers under 2,000 lbs.)

WEIGHT DISTRIBUTING HITCH

- All models (w/trailer over 2,000 lbs.)

LOAD EQUALIZING BARS

- Bronco II, Ranger
- Bronco, F-Series models w/weight distributing hitch

EXTRA COOLING

- Econoline, Club Wagon, F-Series (w/trailers under 2,000 lbs.)

SUPER COOLING

- Bronco (w/trailers under 2,000 lbs.)
- Econoline, Club Wagon, F-Series and fifth wheel applications (w/trailers over 2,000 lbs.)

H.D. BATTERY/GAUGE PACKAGE

- Bronco II, Ranger

AUX. FUEL TANK/DUAL ELECT. HORNS

- F-Series and fifth wheel applications

IN BOX SPARE TIRE CARRIER

- F-Series, except fifth wheel applications

TRAILER TOWING PACKAGE

- Econoline, Club Wagon, Bronco, F-Series and fifth wheel applications



Get it together. Buckle up.