

sable



mercury
2000



balance

All 2000 Sable models can be optionally equipped with a four-wheel Anti-lock Brake System (ABS). Under many different adverse driving conditions, ABS is designed to automate the process of brake pumping, minimizing the chances for wheels to lock up and cause a loss of control. Response time for ABS is less than one-tenth of a second and requires no driver input other than normal, steady brake application.

Sable's available anti-lock brakes are augmented by Electronic Brake Force Distribution (EBD). When equipped with ABS and EBD, braking effort is automatically and constantly optimized between front and rear. The system's functionality is maintained regardless of brake pad friction levels or other mechanical variances.

finesse

Style meets technology. And, as in any good partnership, harmony and balance is evident at every turn. The 2000 Sable blends applied science with shapes, colors and textures to create a most appealing and comfortable environment. Sable's civilized exterior belies its remarkable technological advances — all of which are invoked to make the driving experience what it should be: stimulating, satisfying and secure. Mercury's concerns for performance, safety and security are melded into a stylish and functional integration of engineering and design. All this has resulted in Sable earning a five-star frontal crash test rating, the government's highest possible rating.

agility

All-Speed Traction Control, optional for both LS Wagon and Sedan, makes use of the ABS sensors to detect and control wheel spin. In less than one-tenth of a second, the system responds by reducing fuel flow, limiting ignition spark and invoking controlled braking. Another example of Mercury's technology applied to enhance security and driving confidence.



style

Sable's handsome, linear front end is punctuated by new complex-reflector headlamps, housed in a wraparound assembly. Both high- and low-beam bulbs are rated for longer life — up to twice as long — and provide significantly greater output with more precise cutoff patterns. Dusk and night road illumination is greatly improved, contributing to enhanced safety and security.





muscle

Sable's powertrains are anchored either by the racing-inspired, 200hp all-aluminum Duratec V6 engine or by the standard Vulcan V6, upgraded to yield more horsepower, increased torque and improved acceleration. Both engines benefit from new automatic transmission technology that actually *learns* driving habits, adapts to them and self-adjusts to mechanical wear in order to maintain original design parameters. Shift protocol is better matched to engine output and driving conditions, and shift duration has been shortened for a more precise feel as well as greater durability.



sophistication

Sable's dozens of new details for 2000 are presented in a refined, elegantly crafted body. The front end and the rear deck lines are simplified, resulting in a crisper, more linear appearance; the grill is enlarged for more attitude as well as better airflow. Sable's precisely sculpted steel skin is the perfect veneer for a mature and substantial styling package. Its trim, tailored and cultivated profile rests confidently on sixteen-inch wheels. All this resulting in a most appealing and attractive makeover.



Harvest Gold
Clearcoat Metallic

Chestnut
Clearcoat Metallic

Toreador Red
Clearcoat Metallic

Graphite Blue
Clearcoat Metallic

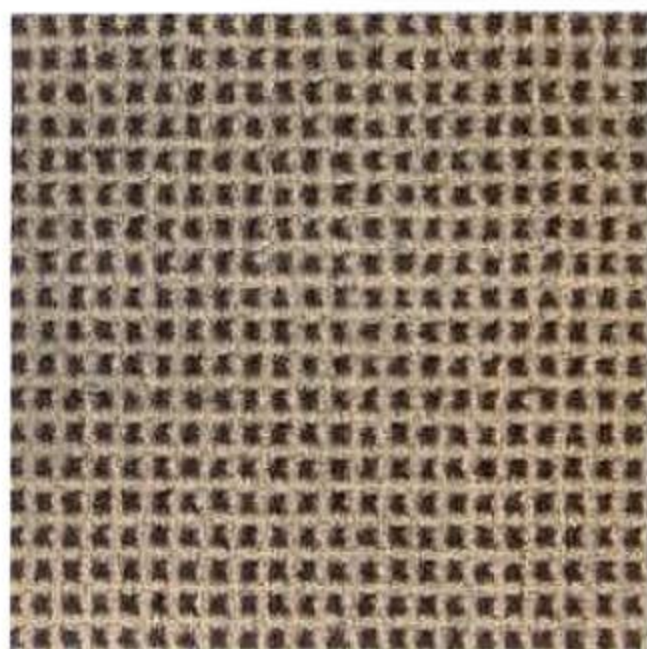
Medium Royal Blue
Clearcoat Metallic

Silver Frost
Clearcoat Metallic

Vibrant White
Clearcoat

Tropic Green
Clearcoat Metallic

Black
Clearcoat



GS CLOTH Parchment
also available in Medium Graphite



LS CLOTH/LEATHER Dark Charcoal
also available in Medium Graphite
and Parchment



LEATHER Medium Graphite
also available in Dark Charcoal
and Parchment





Sable LS Premium Sedan with Light Parchment interior. Shown with optional equipment.



integration

The new instrument control panel is a perfect example of logical engineering and intelligent use of space. The layout of controls and selectors is user-friendly and sensible, making excellent use of valuable real estate. The control panel's auto power feature allows tapping the AM, FM, CD or tape button to activate the selected function, even when the radio is not ON.

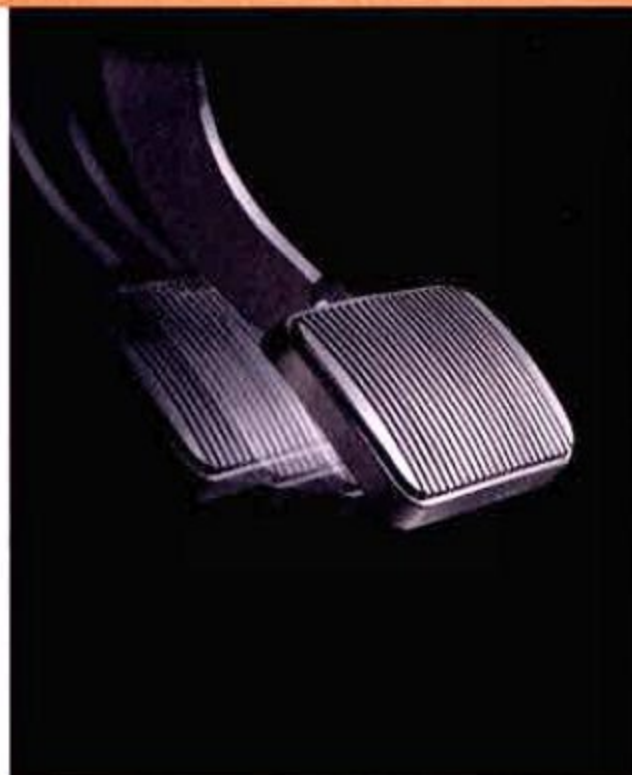


Sable Sedans and Wagons, whether equipped for five- or six-passenger seating, feature amenities such as front and rear cup holders as well as an auxiliary 12-volt power point.

technology

Sable has been engineered to provide its driver and passengers with an uncommon level of convenience and comfort. Many of the refinements for 2000 are tucked away *under the hood* and contribute to Sable's excellent performance characteristics. Others, such as seat position and impact sensors, safety belt improvements and dual stage airbag inflators, are designed to instill a sense of well-being and security. Ride quality is made more luxurious by revised suspension component mounts, softer shock absorbers and strut tuning and lower spring rates. All that and more is what elevates Sable beyond mere transportation to a first-class ride.

Power-adjustable pedals make driving more comfortable for drivers of different stature. Standard on LS models, this unique feature allows brake and accelerator pedals to travel up to three inches to optimize the driver's position relative to the steering wheel.



Safety and security have always played an important role in Sable's development. Sable sedans now include an emergency inside trunk lock release. A very simple hand action will prevent a child from remaining accidentally locked in the trunk.



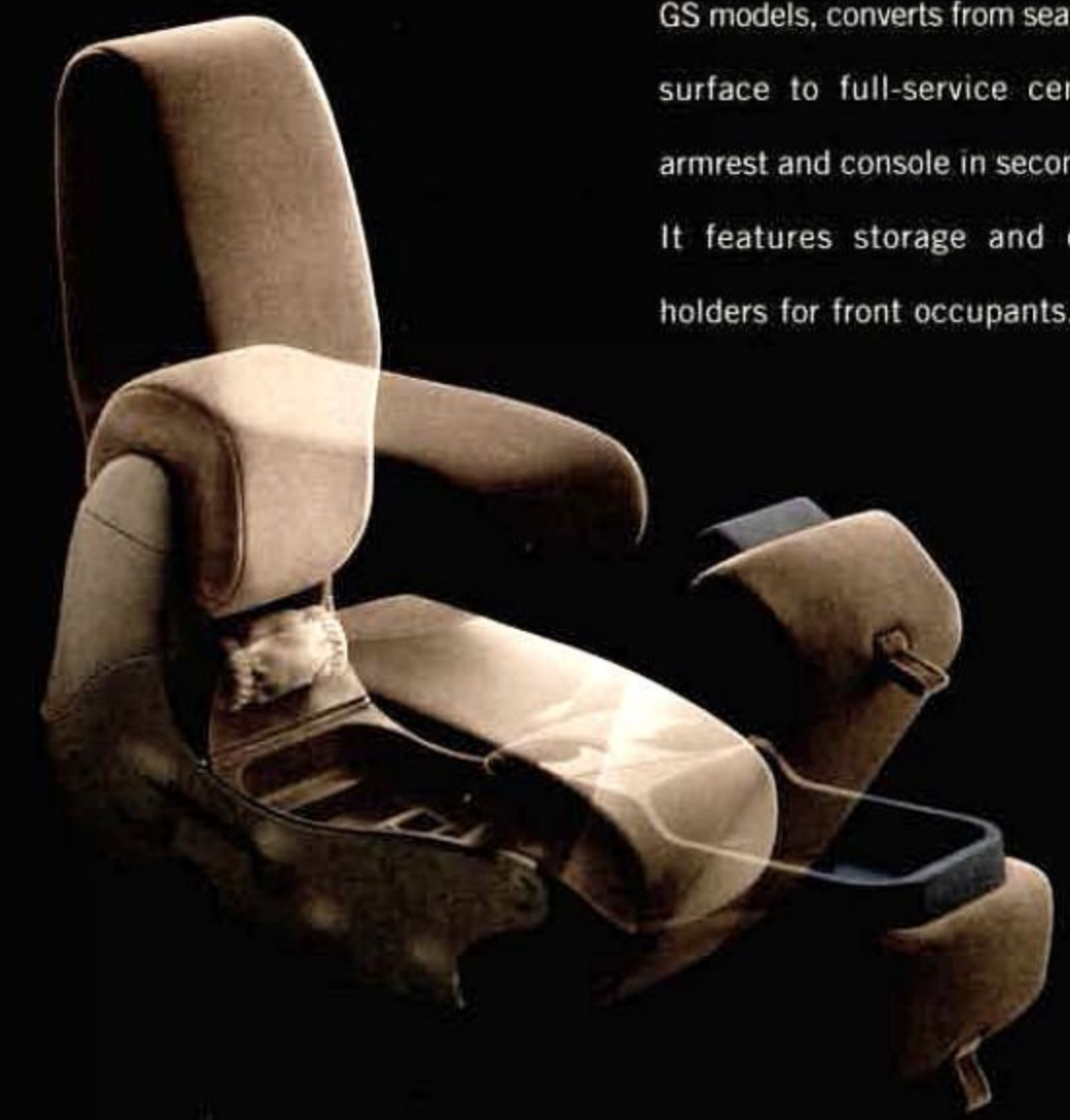
safety

Standard safety initiatives for 2000 Sable include sensing devices to monitor driver's seat position. Safety-cell passenger compartment construction, crumple zones, side-impact door beams, use of energy-absorbing materials throughout the cabin and available side-impact head/chest airbags* all illustrate Mercury's continuing commitment to occupant safety. The Personal Safety System™ for Sable includes front-impact and driver seat position sensors, designed to provide a modulated and appropriate rate of front airbag deployment. The resulting dual-stage airbags are standard in all 2000 Sable models. As a result of Mercury's commitment to safety, Sable earned the five-star frontal crash test rating, the government's highest possible rating as recognized by the National Highway Traffic Safety Administration.

*Always wear your safety belt and secure children in the rear seat.



The flip-fold console, standard with six-passenger seating in GS models, converts from seating surface to full-service center armrest and console in seconds. It features storage and cup holders for front occupants.



All Sables are supplied with two key fobs that will lock and unlock the driver's door or all doors — as well as the trunk — from about thirty feet away. The panic button, when pressed, attracts attention by activating the horn and flasher lights.



Sable LS Premium includes a five-button, user-coded keypad in the driver's door. The keypad can be used to unlock all doors and the trunk. It also helps to prevent unauthorized entry and arms the vehicle's perimeter anti-theft system.

specifications

ENGINES		V6 OHV VULCAN 12-VALVE		V6 DOHC DURATEC 24-VALVE	
		SEDAN	WAGON	SEDAN	WAGON
ENGINES	Displacement	3.0 liter	3.0 liter	3.0 liter	3.0 liter
	Horsepower (SAE net)	155 @ 4900 rpm	155 @ 4900 rpm	200 @ 5650 rpm	200 @ 5650 rpm
	Torque (SAE net)	185 lb-ft @ 3950 rpm	185 lb-ft @ 3950 rpm	200 lb-ft @ 4400 rpm	200 lb-ft @ 4400 rpm
	Fuel delivery	Returnless with high-pressure fuel pump	Returnless with high-pressure fuel pump	Returnless with high-pressure fuel pump	Returnless with high-pressure fuel pump
	Fuel injection	Sequential multi-port electronic	Sequential multi-port electronic	Sequential multi-port electronic	Sequential multi-port electronic
	Compression ratio	9.28:1	9.28:1	10.0:1	10.0:1
ENGINES	Engine control	EEC-V Electronic Engine Control	EEC-V Electronic Engine Control	EEC-V Electronic Engine Control	EEC-V Electronic Engine Control
	Scheduled tune-up interval	100,000 miles ¹	100,000 miles ¹	100,000 miles ¹	100,000 miles ¹
TRANSAXLE		Electronic 4-speed automatic with overdrive and adaptive shift control			
BRAKES	Front	10.9-inch vented disc	10.9-inch vented disc	10.9-inch vented disc	10.9-inch vented disc
	Rear	8.9-inch drum	8.9-inch drum	10.1-inch disc	10.1-inch disc
STEERING		Power rack-and-pinion			
SUSPENSION	Front	Fully independent, MacPherson with gas-pressurized hydraulic struts and stabilizer bar			
	Rear	Fully independent Quadralink system with gas-pressurized hydraulic struts and stabilizer bar			
CAPACITIES	Fuel tank	18.0 gal	18.0 gal	18.0 gal	18.0 gal
	Cargo capacity	16.0 cu ft	16.0 cu ft	38.8 cu ft/81.3 cu ft (rear seat up/down)	38.8 cu ft/81.3 cu ft (rear seat up/down)
	Curb weight	3379 lb Vulcan/3387 lb Duratec	3379 lb Vulcan/3387 lb Duratec	3544 lb Vulcan/3473 lb Duratec	3544 lb Vulcan/3473 lb Duratec
DIMENSIONS (INCHES)	Headroom (without moonroof)	Front: 39.8	Rear: 36.7	Front: 39.3	Rear: 38.7
	Legroom	Front: 42.2	Rear: 38.9	Front: 42.2	Rear: 38.5
	Shoulder room	Front: 57.4	Rear: 56.7	Front: 57.4	Rear: 56.7
	Hiproom	Front: 54.6	Rear: 55.2	Front: 54.6	Rear: 55.2
	Length	199.8	199.8	197.8	197.8
	Track	Front: 61.6	Rear: 62.1	Front: 61.6	Rear: 61.8
	Width	73.0 (overall excluding mirrors)	73.0 (overall excluding mirrors)	73.0 (overall excluding mirrors)	73.0 (overall excluding mirrors)
	Height	57.6	57.6	59.8	59.8
	Wheelbase	108.5	108.5	108.5	108.5

equipment

PERSONAL SAFETY SYSTEM

- Dual-stage front airbags²
- Front-impact severity sensors
- Front safety belt usage detectors
- Driver's seat position sensor
- Front safety-belt pretensioners
- Energy-management belt retractors
- Energy-absorbing trim material

PREMIUM FEATURES

- The following items are included for LS Premium Sedan and Wagon models:
- Fog lamps
 - 200hp DOHC Duratec engine
 - Power adjustable pedals
 - Automatic-on/delay-off headlamps
 - Keyless Entry keypad (driver's door)
 - Electronic Automatic Temperature Control
 - Perimeter Anti-Theft System
 - 16-inch machined aluminum wheels
 - Leather seating surfaces (no charge option)

features

FUNCTIONAL FEATURES

	6S SEDAN	LS SEDAN	LS PREMIUM SEDAN	6S WAGON	LS PREMIUM WAGON
Personal Safety System	std	std	std	std	std
SecuriLock™ passive anti-theft system	std	std	std	std	std
Dual-stage driver and front passenger airbags ²	std	std	std	std	std
Emergency inside trunk release	std	std	std	—	—
Rear-door child-safety locks	std	std	std	std	std
Height-adjustable 3-point safety belts for outboard front occupants	std	std	std	std	std
3-point safety belt for rear outboard seat occupants	std	std	std	std	std
Integrated rear child-safety seat tether anchors	std	std	std	std	std
Side-impact head/chest airbags ²	opt	opt	opt	opt	opt
Locking head restraints (front seats)	std	std	std	std	std
High-strength side-impact door beams	std	std	std	std	std
3.0L 24-valve Duratec V6 engine with coil-on-plug ignition	—	opt	std	—	std
3.0L 12-valve Vulcan V6 engine	std	std	—	std	—
4-speed electronic automatic transaxle with overdrive	std	std	std	std	std
4-wheel Anti-lock Brake System (ABS) with Electronic Brake Force Distribution (EBD)	opt	opt	opt	opt	opt
All-Speed Traction Control (requires ABS)	—	opt	opt	—	opt
Power-adjustable brake/accelerator pedals	opt	std	std	opt	std
100,000-mile scheduled tune-up intervals ¹	std	std	std	std	std

EXTERIOR FEATURES

Dual power exterior mirrors	std	—	—	std	—
Heated, dual power exterior mirrors	—	std	std	—	std
Complex-reflector clear-lens headlamps with integrated outboard turn signals	std	std	std	std	std
Fog lamps	—	—	std	—	std
Automatic-on/delay-off headlamps	—	—	std	—	std
Remote Keyless Entry system with two key fobs	std	std	std	std	std
Driver's side door programmable keypad	—	—	std	—	std
WHEELS AND TIRES					
P215/60R16 black sidewall all-season tires	std	std	std	std	std
16-inch five-bolt deluxe bolt-on wheel cover	std	—	—	—	—
16-inch seven-spoke machined aluminum wheel	opt	std	std	std	std
16-inch five-spoke Chrometec wheel	—	opt	opt	—	opt

std = Standard Feature opt = Optional Feature — = Not Available nco = No Charge Option

¹Under normal driving conditions with routine fluid and filter changes. ²Always wear your safety belt and secure children in the rear seat. ³Requires head/chest side airbags and leather seating surfaces.

Following publication of this brochure, certain changes in standard equipment, options, prices and the like, or product delays may have occurred which would not be included in these pages. Your Mercury dealer is your best source for up-to-date information. Lincoln Mercury reserves the right to change product specifications at any time without incurring obligations.

FORD CREDIT



Ford Credit provides the convenience of one-stop shopping with a variety of simple-to-understand purchase or Red Carpet Lease programs available right at the dealership. For more information, ask your dealer for details, or visit us on the web at www.fordcredit.com

INTERIOR COMFORT AND CONVENIENCE FEATURES

	6S SEDAN	LS SEDAN	LS PREMIUM SEDAN	6S WAGON	LS PREMIUM WAGON
CFC-free air conditioning	std	std	std	std	std
Electronic Automatic Temperature Control	—	—	std	—	std
60/40 split-fold rear seatback	—	std	std	std	std
Integrated control panel with climate, audio, rear window defroster, digital clock controls and auto power feature	std	std	std	std	std
Illuminated power controls: door locks, windows with express-down and accessory delay	std	std	std	std	std
Power moonroof with one-touch-open feature	—	opt	opt	—	opt
Dual illuminated visor mirrors	—	—	std	—	std
Bucket seats, cloth	std	—	—	std	std
Bucket seats, cloth with leather	—	std	std	—	—
Bucket seats, leather seating surfaces	—	—	nco	—	nco
6-way power driver's seat with manual lumbar adjustment	opt	std	std	opt	std
6-way power passenger seat ³	—	—	opt	—	opt
5-passenger seating with dual recliners, rear-seat air conditioning ducts, front armrest, and floor console and shifter	opt	std	std	—	std
6-passenger seating with dual recliners, flip-fold front center console, 2-way head restraints	std	—	opt	std	opt
Dual front and rear cup holders	std	std	std	std	std
Leather-wrapped steering wheel	—	std	std	—	std
Courtesy lights, dual-beam lamp and dome lamp with delay off	std	std	std	std	std
Auxiliary 12-volt power point	std	std	std	std	std

INSTRUMENTATION

Analog instrument cluster with speedometer, tachometer, trip odometer, coolant temperature and fuel gauges

AUDIO

AM/FM stereo/cassette with four speakers	std	std	std	std	std
Fixed antenna, driver-side rear-mounted	std	std	std	—	—
Power antenna, driver-side rear-mounted	—	—	—	std	std
Audio Group: MACH® Audio System with AM/FM stereo/cassette and 6 speakers with radio-controlled 6-disc CD changer	—	opt	opt	—	opt



Driver and passenger front crash test. Class is mid-sized vehicles under \$22,000.



50% TOTAL RECOVERED FIBER/20% POST CONSUMER FIBER

2000 EPA mileage estimates were unavailable when this brochure was printed. Options shown or described in this brochure are available at extra cost and may be offered only in combination with other options or subject to additional ordering requirements or limitations.



THE MERCURY CYCLING TEAM is hitting the streets and will be participating in races from coast to coast. Look for this pro cycling team in your area. For more information on Mercury vehicles visit us on the web at www.mercuryvehicles.com

- A 16-inch deluxe bolt-on wheel cover
- B 16-inch seven-spoke machined aluminum
- C 16-inch Chrometec wheel



Shown on the Wagon's standard luggage rack, an accessory bike carrier adapter is one of many dealer-supplied accessories available for the 2000 Sable.



Mystique



Cougar



Sable



Grand Marquis



Villager



Mountaineer

Mercury Test-Drive

888.566.8888

Customer Assistance

800.392.3673

Roadside Assistance

800.241.3673

www.mercuryvehicles.com

Mercury



Live life in your own lane

MERCURY COMMITMENTSM

It is the extra comforts of ownership, exemplified in a comprehensive benefits package. It is the assurance that meeting your driving needs will always be our ultimate objective. Ask your dealer for complete details and a copy of the limited warranty.