



villager



m e r c u r y

2 0 0 0

smooth

Up front, Villager has MacPherson struts and a stabilizer bar to improve control when cornering. In back, its single-leaf rear suspension is designed to support heavy cargo and passenger loads while maintaining a smooth, car-like ride.



specifications

ENGINE	Type	SOHC V6		
	Displacement	3.3 liter		
	Horsepower (SAE net)	170 @ 4800 rpm		
	Torque (SAE net)	200 lb-ft @ 2800 rpm		
	Fuel delivery	Sequential multi-port electronic fuel injection		
CAPACITIES	Fuel tank	20.0 gal		
	Seating capacity	7 passengers		
	Curb weight	3847 lb Villager; 3962 lb Sport/Estate		
	Maximum towing capacity	3500 lb when properly equipped		
TRANSAXLE	Electronic 4-speed automatic overdrive with overdrive lockout			
BRAKES	Power front disc/rear drum			
STEERING	Power-assisted rack-and-pinion			
	Curb-to-curb turning diameter	39.9 ft		
SUSPENSION	Front	MacPherson gas-pressurized struts with front stabilizer bar		
	Rear	Single-leaf suspension with gas-pressurized hydraulic shock absorbers		
	Sport/Estate	Handling suspension includes rear stabilizer bar, rear shock absorbers, modified front spring rates and front struts		
DIMENSIONS (INCHES)	Headroom	Front: 39.7	Middle: 39.9	Rear: 38.0
	Legroom	Front: 39.9	Middle: 36.4	Rear: 36.3
	Shoulder room	Front: 62.3	Middle: 64.6	Rear: 62.4
	Hiproom	Front: 56.5	Middle: 64.9	Rear: 49.0
	Length	194.7		
	Width	74.9		
	Height	70.1		
	Wheelbase	112.2		
	Track	Front: 63.4		Rear: 63.4
	Cargo volume	Behind 3rd seat: 32.2 cu ft ¹		Maximum: 127.6 cu ft



agile

Agility isn't a word you readily associate with minivans. Meet Villager. With a turning diameter of less than forty feet, power-assisted rack-and-pinion steering, independent front suspension and superb driver visibility, Villager makes getting in and out of tight spots e-a-s-y.

optional equipment/groups

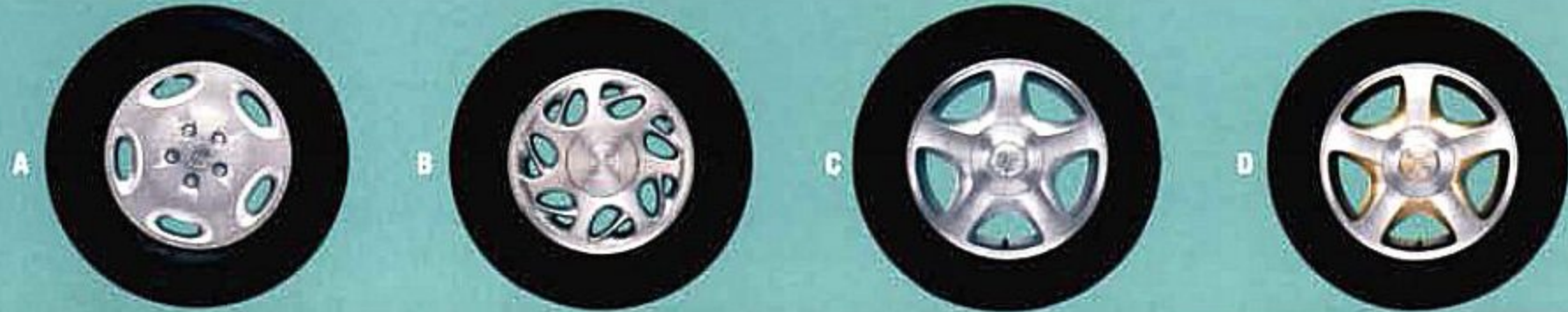
OPTIONAL EQUIPMENT	■ 4-wheel Anti-lock Brake System (ABS)	■ Rear Seat Entertainment System ²
	■ Power moonroof	■ Trailer Tow Prep Package
	■ 6-disc CD changer	
CONVENIENCE GROUP ³	■ 6-way power driver's seat with manual lumbar adjustment	■ Flip-open liftgate window
	■ Privacy Glass™	■ Overhead console with conversation mirror
	■ Light Group	■ Power flip-out 3rd-row windows

abs

An advanced four-wheel Anti-lock Brake System (ABS), available on all Villager models, is designed to maintain steering control in most hard-braking situations, including emergency stops and on rain-soaked roads. ABS is a clever bit of engineering that helps to prevent wheels from locking and sliding. Electronic sensors signal the system to actually "pump" your brakes as needed — at each individual wheel.



- A 15-inch steel with full wheel cover
- B 15-inch deluxe aluminum
- C 16-inch machined aluminum
- D 16-inch machined aluminum with gold pockets



smart

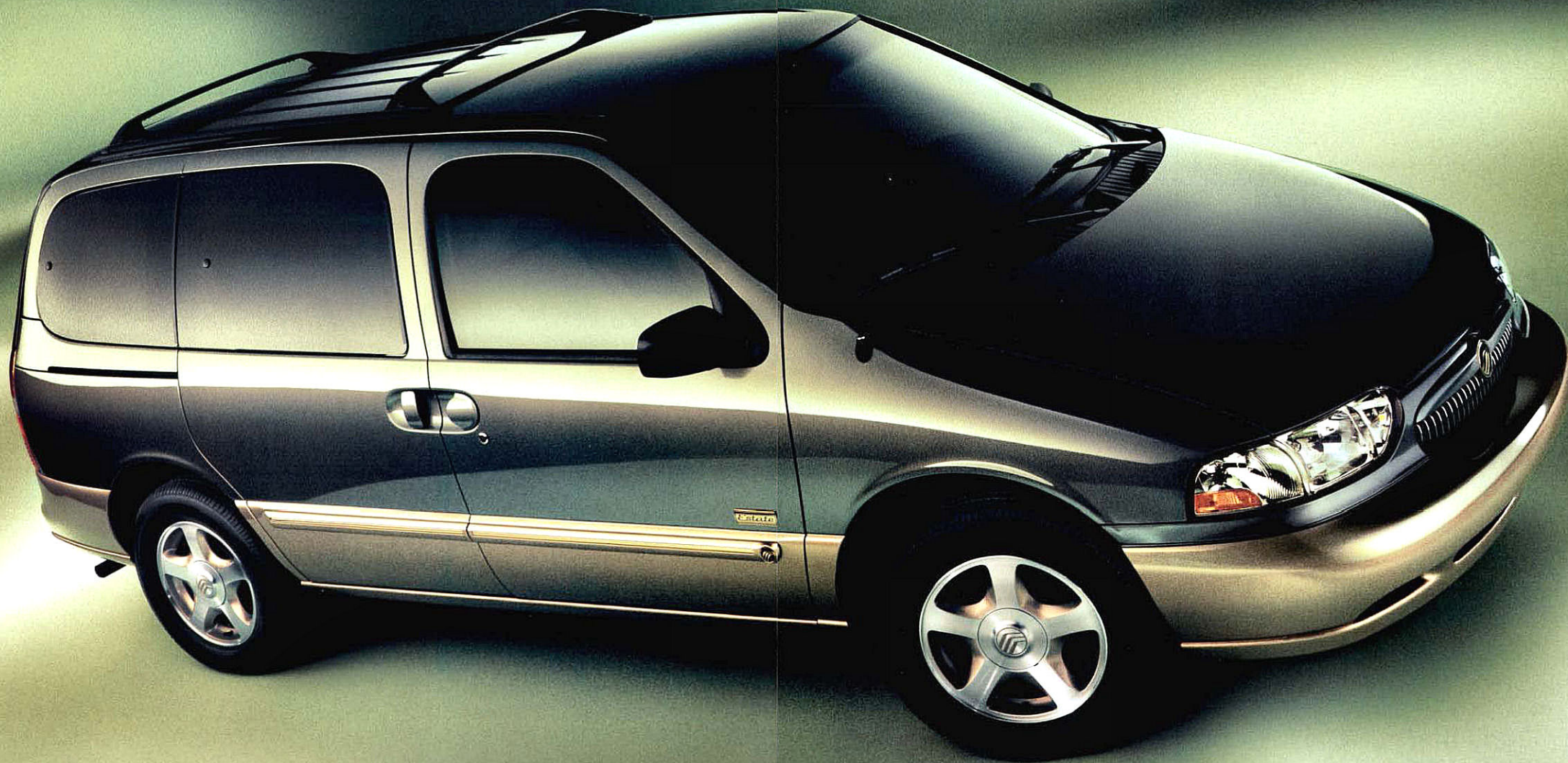
Technology ought to bring peace of mind, comfort and a bit of convenience. The 2000 Villager was engineered with that in mind. That's why so many of the **BRILLIANT** little touches in Villager are such a pleasant surprise. They actually add to the enjoyment of owning it, driving it and riding in it. What used to be empty space has turned into storage. Moving (or removing) seats from a minivan used to be a team sport; Villager has made it **EASY**. Getting in and out used to mean crawling over people and stuff; sliding doors on both sides have made it easy. And options such as rear audio controls, heated mirrors, TravelNote® with HomeLink® Universal Transmitter, memory driver's seat...they all help make life easier.



ready

Question: What do people want in a minivan? Answer: Storage. Easy access. Room to move. The 2000 Villager is a case study in intelligent use of space. There are many storage areas waiting to be filled. Villager's seating options, beginning with the maximum seven-person configuration, can be adjusted to accommodate virtually any need. In virtually no time. By virtually anybody. Villager was designed with sufficient body integrity to allow both sides of the vehicle to be equipped with sliding mid-body doors. That makes getting in from either side easy. And getting out easy. Even moving inside is easy. Pretty much everything about this van is easy. And that includes driving it, parking it and maintaining it.





able



The sensible combination of front-wheel drive, an electronically controlled four-speed automatic overdrive transaxle and power-assisted rack-and-pinion steering contribute to Villager's car-like **HANDLING**.



Villager's 3.3L V6 produces plenty of horsepower and torque. Overhead cams, aluminum cylinder heads and smart electronic engine control all combine to give you the power to merge, climb and pull — or just cruise in comfort. Villager is designed to go 100,000 miles between scheduled tune-ups, under normal driving conditions and with routine fluid and filter changes. That's due in part to platinum-tipped spark plugs and an integrated ignition system.



Dual illuminated visor vanity mirrors are a thoughtful touch. And an available conversation mirror lets you keep an eye on rear seat passengers and cargo.



Located on the driver's visor, TravelNote® records, stores and plays back three minutes worth of messages. The cluster includes a HomeLink® Universal Transmitter to control up to three separate home devices. Both items are standard on Villager Estate.



Available for all models, the new Rear Seat Entertainment System* incorporates a video-cassette player, video game capability and more in a multi-purpose center console. When the kids are late for dinner, you might want to check the garage...

*Late availability



Definitely one of Villager's better ideas: a versatile 30-lb capacity, three-position parcel shelf with its cargo net can help organize loose gear and **PROTECT** personal items. It can also be arranged to keep valuables safely out of sight and shaded from excessive sun.

Villager offers front, middle and rear seat cup holders to safely and conveniently hold beverages for the driver and all passengers.



Attractive entertainment options include the Villager Super Sound System with AM/FM stereo/cassette/single CD player with 6-disc CD changer. The Personal Audio System allows rear passengers to listen to their own music (through headphones) without disturbing front occupants. Family road trips just got a lot more **HARMONIOUS**.



Another one of those great little Villager touches: a sliding drawer underneath the front-passenger seat turns otherwise empty space into one of many convenient storage areas.





Want to toss something in the rear cargo area without disturbing passengers? The flip-open liftgate window* is designed to let you do just that.

*Standard on Sport and Estate models.



fresh

Four flip-out bodyside windows (in the sliding doors and rear quarters) offer 2nd- and 3rd-row passengers easy access to fresh air and ventilation.



Choose the optional Electronic Automatic Temperature Control and keep the interior at the desired temperature without continual adjustments. Rear passengers can exercise their freedom of choice with their own available A/C controls.*

*Standard on Sport and Estate models.

flexible

Whether you're transporting the swim team, taking your graduate to college or bringing home a load of flea market finds, Villager's clever In-Track™ rear sliding seat system couldn't be more **ACCOMMODATING**. Recessed tracks — over five feet long — not only make moving the 3rd-row seat quick and easy, they also stay clear of cargo and feet. With over sixty different seat configurations* available in Villager, chances are you may never have to decide what or whom to leave behind.

*With 2nd-row bucket chair seating.



peace of mind

Safety and security are big issues with Mercury. Villager's body structure, for instance, incorporates front and rear crumple zones to help absorb and dissipate energy in case of impact. All side doors are **REINFORCED** with side anti-intrusion beams. Every outboard seat is equipped with a three-point safety belt; driver and front passenger airbags are standard; the sliding side doors are fitted with child-safety locks. Villager Estate is equipped with headlamps that will automatically go on at dusk, avoiding the risk of maneuvering through traffic without being seen. Standard features, like Remote Keyless Entry and an Anti-Theft Alarm, help **PROTECT** your Villager and its contents.

villager



Toreador Red Clearcoat Metallic



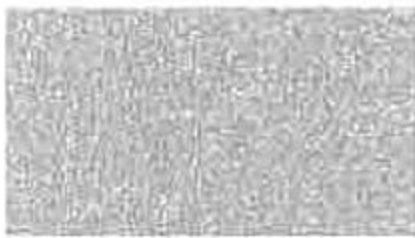
Graphite Blue Clearcoat Metallic



Deep Jewel Green Clearcoat Metallic



Oxford White Clearcoat



Silver Clearcoat Metallic



Deep Jewel Green Clearcoat Metallic/Silver Clearcoat Metallic*



Toreador Red Clearcoat Metallic/Silver Clearcoat Metallic*



Graphite Blue Clearcoat Metallic/Silver Clearcoat Metallic*



Oxford White Clearcoat/Silver Clearcoat Metallic*

*Extra cost two-tone paint.

villager sport



Deep Jewel Green Clearcoat Metallic/Silver Clearcoat Metallic



Deep Wedgewood Blue Clearcoat Metallic/Silver Clearcoat Metallic



Toreador Red Clearcoat Metallic/Silver Clearcoat Metallic



Black Clearcoat/Silver Clearcoat Metallic



Oxford White Clearcoat/Silver Clearcoat Metallic

villager estate



Deep Jewel Green Clearcoat Metallic/Harvest Gold Clearcoat Metallic



Chestnut Clearcoat Metallic/Harvest Gold Clearcoat Metallic



Spruce Green Clearcoat Metallic/Harvest Gold Clearcoat Metallic



Deep Wedgewood Blue Clearcoat Metallic/Harvest Gold Clearcoat Metallic



Black Clearcoat/Harvest Gold Clearcoat Metallic



Oxford White Clearcoat/Harvest Gold Clearcoat Metallic



VILLAGER Cloth Golden Mink
also available in Portland Grey



VILLAGER SPORT Cloth Portland Grey
also available in two-tone Portland Grey Leather



VILLAGER ESTATE Leather Golden Mink



features

FUNCTIONAL FEATURES

	VILLAGER	SPORT	ESTATE
Dual front airbags ¹	std	std	std
100,000-mile scheduled tune-up intervals ²	std	std	std
Battery saver	std	std	std
Flip-out 2nd-row windows	std	std	std
Power flip-out 3rd-row windows	grp	std	std
Interval windshield wipers, fixed interval rear wiper/washer	std	std	std
Height-adjustable front 3-point lap/shoulder safety belts	std	std	std
Rear 3-point lap/shoulder safety belts for outboard passengers (outboard with child seat safety locking feature)	std	std	std
Electric rear window defroster	std	std	std
Fingertip speed control with tap-up/tap-down feature	std	std	std
4-wheel Anti-lock Brake System (ABS)	opt	opt	opt
Trailer Tow Prep Package (includes P215/70R15 spare tire)	opt	opt	opt

EXTERIOR FEATURES

Halogen complex reflector headlamps with front cornering and integral turning lamps	std	std	std
5-mph impact bumpers front/rear	std	std	std
Side anti-intrusion door beams	std	std	std
Solar-tinted glass	std	std	std
Two-tone paint with color-keyed bodyside moldings	opt	std	std
Luggage rack	std	std	std
Dual power exterior mirrors	std	std	std
Heated exterior mirrors	-	-	std
Power moonroof	-	opt	opt
Privacy Glass™	grp	std	std
Flip-open liftgate window	grp	std	std
Remote Keyless Entry system with two key fobs	std	std	std

WHEELS AND TIRES

P215/70R15 black sidewall all-season tires	std	-	-
P225/60R16 black sidewall all-season tires	-	std	std
Temporary mini spare tire under floor	std	std	std
16-inch machined aluminum wheels	-	std	std
15-inch deluxe aluminum wheels	opt	-	-

INTERIOR COMFORT AND CONVENIENCE FEATURES

Front and rear floor mats with reversible cargo mat	std	std	std
Glove box with lamp	std	std	std
Entry assist handles	std	std	std
Storage pull-out drawer in center stack	std	std	std
Third-row storage bin	std	std	std
3-position parcel shelf with cargo net	-	std	std
Front and rear cargo nets ³	std	std	std
Dual illuminated visor mirrors	std	std	std

std = Standard Feature opt = Optional Feature grp = Included in Optional Group - = Not Available

¹With seat moved forward two seat positions. ²Late availability. ³Optional equipment for Villager; standard on Villager Sport and Villager Estate. ⁴Always wear your safety belt and secure children in the rear seat. ⁵Under normal driving conditions with routine fluid and filter changes. ⁶Cargo net n/a with Rear Seat Entertainment System.

VILLAGER SPORT ESTATE

INTERIOR COMFORT AND CONVENIENCE FEATURES (CONTINUED)

Sliding doors with time delay step lamp	std	std	std
Tilt steering column	std	std	std
Front and rear 12-volt power points	std	std	std
Automatic on/delay off headlamps	-	-	std
Leather-wrapped steering wheel with audio controls	-	std	std
Power front windows with illuminated controls and accessory delay	std	std	std
Power door locks with illuminated controls and central locking	std	std	std
CFC-free air conditioner	std	std	std
Anti-Theft Alarm system	std	std	std
Light Group: front overhead dual map lights, front door step lamps, under-dash lamps with time delay and 2nd- and 3rd-row driver's side map lights	grp	std	std
Auxiliary air conditioning with rear audio/fan controls and Odor/Particulate Air Filtration System	opt	std	std
TravelNote® with HomeLink® Universal Transmitter	-	-	std
Electronic Automatic Temperature Control	-	opt	opt
Overhead console with conversation mirror	grp	std	std

SEATING

Reclining front bucket chairs with adjustable head restraints	std	std	std
6-way power driver's seat with manual lumbar adjustment	grp	std	std
4-way power passenger seat	-	-	std
Front passenger under-seat storage drawer	std	std	std
7-passenger seating: 2nd-row quick-release bench seat with seatback tray table and 3-passenger rear bench seat with In-Track™ system and two outboard head restraints	std	opt	-
7-passenger seating: two 2nd-row quick-release quad bucket chairs with rear seatback tray tables, and 3-passenger rear bench seat with In-Track™ system and two outboard head restraints	-	std	std
Leather seating surfaces	-	opt	std
Child seat tether anchors	std	std	std

INSTRUMENTATION

Analog instrument cluster with speedometer, tachometer, trip odometer, temperature and fuel gauges	std	std	std
White-faced analog instrument gauges	-	std	-
Electronic Instrument Cluster with digital speedometer, odometer, dual trip odometers, trip computer and outside temperature reading	-	-	opt

AUDIO

AM/FM stereo/cassette with four speakers	std	std	-
Premium AM/FM stereo/cassette with Personal Audio System	opt	opt	std
Super Sound System AM/FM stereo/cassette/single CD player and 6-disc CD changer with Personal Audio System	-	opt	opt
6-disc CD changer (compatible with all audio systems)	opt	opt	opt

50% TOTAL RECOVERED FIBER/20% POST CONSUMER FIBER

Following publication of this brochure, certain changes in standard equipment, options, prices and the like, or product delays may have occurred which would not be included in these pages. Your Mercury dealer is your best source for up-to-date information. Lincoln Mercury reserves the right to change product specifications at any time without incurring obligations.

2000 EPA mileage estimates were unavailable when this brochure was printed. Options shown or described in this brochure are available at extra cost and may be offered only in combination with other options or subject to additional ordering requirements or limitations.



Ford Credit provides the convenience of one-stop shopping with a variety of simple-to-understand purchase or Red Carpet Lease programs available right at the dealership. For more information, ask your dealer for details, or visit us on the web at www.fordcredit.com



THE MERCURY CYCLING TEAM is hitting the streets and will be participating in races from coast to coast. Look for this pro cycling team in your area. For more information on Mercury vehicles visit us on the web at www.mercuryvehicles.com



A thoughtful addition to Villager is the dealer-installed side entry assist step. It's sturdy and stylish — and kids love it.



Mystique



Cougar



Sable



Grand Marquis



Villager



Mountaineer

Mercury Test-Drive

888.566.8888

Customer Assistance

800.392.3673

Roadside Assistance

800.241.3673

www.mercuryvehicles.com

Mercury



Live life in your own lane

MERCURY COMMITMENTSM

It is the extra comforts of ownership, exemplified in a comprehensive benefits package. It is the assurance that meeting your driving needs will always be our ultimate objective. Ask your dealer for complete details and a copy of the limited warranty.