

CONTENTS

- 02. TERRANO GRADES
- 04. COLOURS
- 06. DIMENSIONS
- 07. UPHOLSTERY
- 08. TECHNICAL SPECIFICATIONS
- 10. NISSAN COMMITMENT



CONTENTS

- TERRANO GRADES .02
- COLOURS .04
- DIMENSIONS .06
- UPHOLSTERY .07
- TECHNICAL SPECIFICATIONS .08
- NISSAN COMMITMENT .10

TERRANO GRADES

The wide choices available with the Terrano certainly broaden your horizons. As well as 5-door or 3-door body styles, there are two grades, two different engines, the option of automatic transmission (on 3.0 litre only) and 9 exterior colours. Which all makes the Terrano the ideal vehicle to express your distinct personality.



SE

3, 5 door

SAFETY

- Driver and passenger airbags
- Front seat mounted side airbags
- Active front seat headrests
- ABS
- Electronic Brake force Distribution (EBD)
- Front seatbelt pretensioners with load limiters
- 3 x 3-point A/ELR rear seatbelts
- 2 x 3-point A/ELR 3rd row seatbelts (5 door only)

TECHNOLOGY

- Selectable 4WD with dual ratio gearbox
- Limited Slip Differential

COMFORT AND CONVENIENCE

- Power assisted tilt adjustable steering
- Front power windows with one touch control (driver's only)
- Rear power windows (5 door only)
- Heated, electrically adjustable door mirrors
- Three 12 volt power socket, front and rear
- Door ajar warning lamp
- Headlamp on warning buzzer

HEATING, VENTILATION AND VISIBILITY

- Air conditioning
- Heated rear windscreen
- 2 speed + variable intermittent front wipers
- Intermittent rear wiper

SEATING, TRIM AND STORAGE

- Cascade seat fabric
- Titanium finish centre console
- Chrome inside door handles
- Chrome plated handbrake knob
- Perforated leather steering wheel and gearknobs
- Driver's seat height and lumbar adjustment
- 50:50 split folding 2nd row seat
- 3rd row removable, folding bench (5 door only)
- Centre console storage box with lid
- 2 in-dash cupholders
- Lockable glove box
- Floor luggage retention net
- Rear door storage nets

SECURITY

- Remote keyless entry with anti-hijack feature
- NATS software lock immobiliser
- Ultrasonic and perimetric alarm
- Flexible luggage area tonneau cover

STYLING

- Dual optic headlamps with integrated fog lamps
- Front and rear mudguards
- 17" alloy wheels with 235/65R17 tyres (x5)
- Chrome grille and headlamp surround
- Body coloured door mirrors
- Aluminium side steps
- Body coloured bumpers, side mouldings and wheel arch extensions
- Standard metallic paint
- Rear side privacy glass

IN-CAR ENTERTAINMENT

- 4 speakers and 2 tweeters
- In dash single CD radio
- Steering wheel audio controls

SVE

3, 5 door (as SE plus)

COMFORT AND CONVENIENCE

- Electric tilt and slide sunroof

HEATING, VENTILATION AND VISIBILITY

- Heated front seats
- Headlamp washers

SEATING, TRIM AND STORAGE

- Black leather seat trim

STYLING

- Roof rails
- Optional two tone paint - Full coloured bumpers, side mouldings and wheel arch extensions (Techno grey)

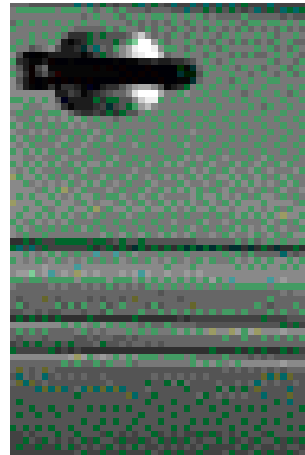
IN-CAR ENTERTAINMENT

- RDS stereo radio cassette
- 6 disc CD autochanger

COLOURS

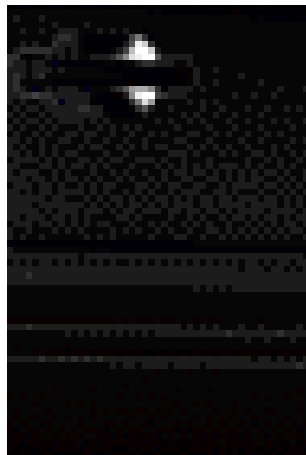


Techno Grey KY5 M

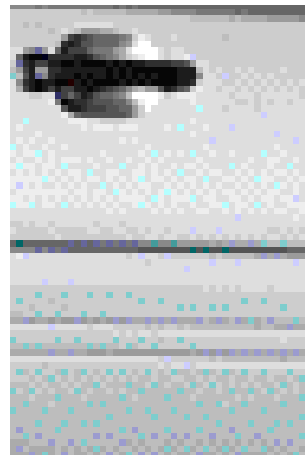


Catalpa Green D14 M

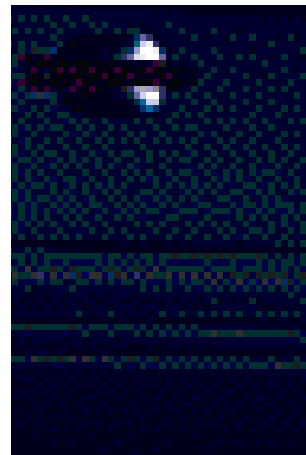
M Metallic
P Pearlescent



Metallic Black GNO M

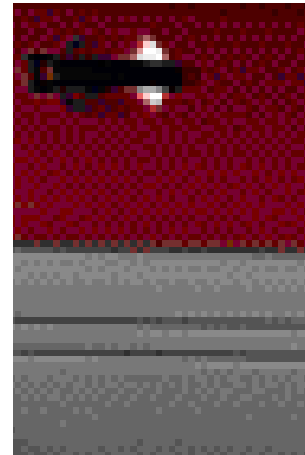


Starburst Silver KLO M

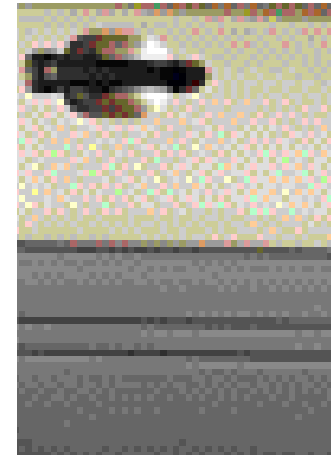


Cayman Blue BW9 M

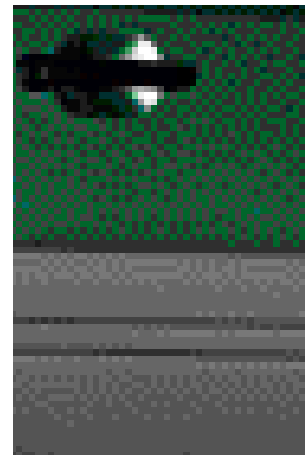
TWO-TONE



Claret A31 / Techno Grey KY5 P
M



Silica EY2 / Techno Grey KY5 P
M

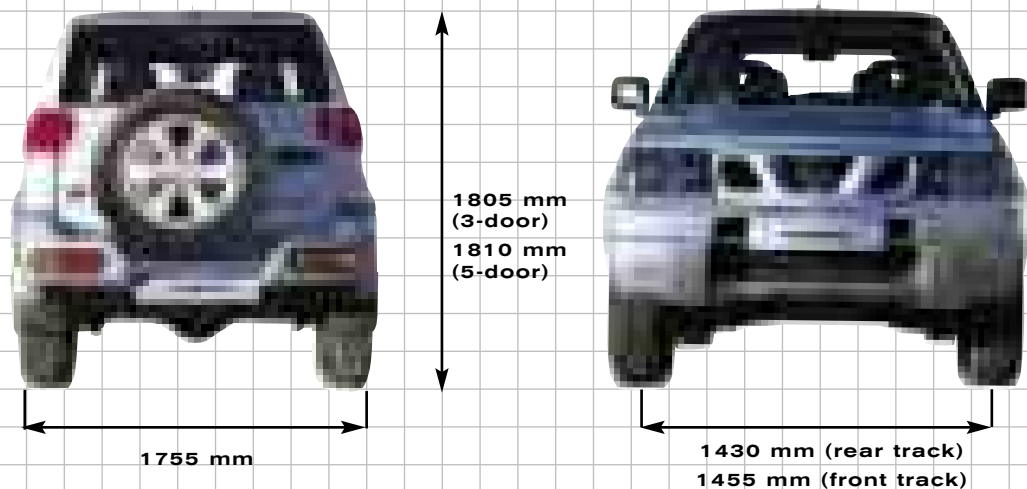
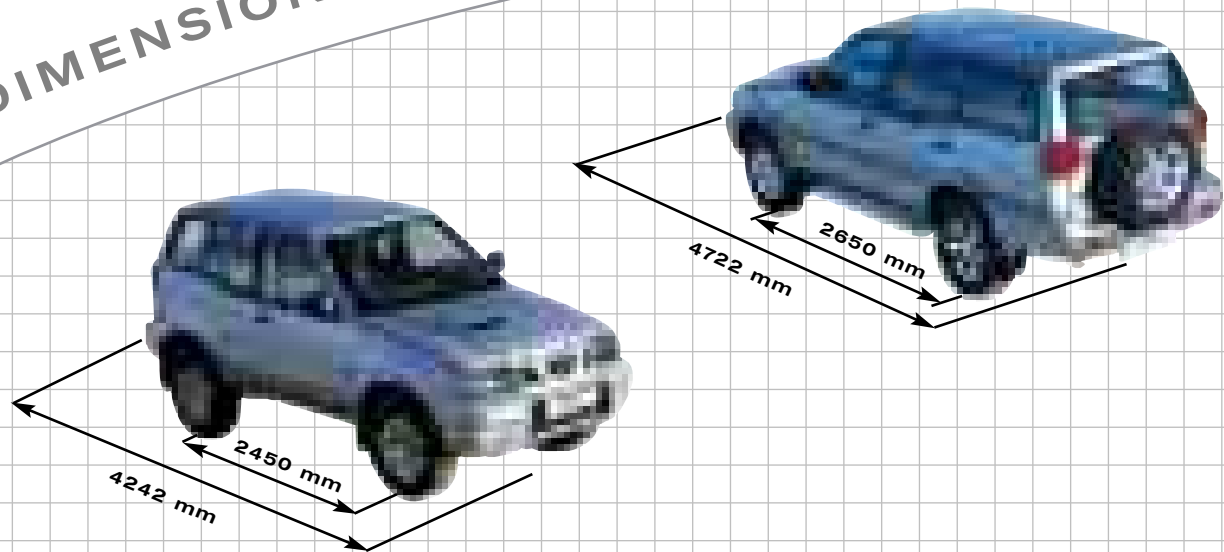


Amazon Green DW0 / Techno Grey KY5 M
M



Starburst Silver KLO / Techno Grey KY5 M
M

DIMENSIONS



SE - Cascade



SVE - Black Leather



Body Colour		SE	SVE
Techno Grey KY5	<input type="checkbox"/> M	•	•
Catalpa Green D14	<input type="checkbox"/> M	•	•
Metallic Black GNO	<input type="checkbox"/> P	•	•
Starburst Silver KLO	<input type="checkbox"/> M	•	•
Cayman Blue BW9	<input type="checkbox"/> M	•	•
Two-tone Claret A31 / Techno Grey KY5	<input type="checkbox"/> P <input type="checkbox"/> M		○
Two-tone Silica EY2 / Techno Grey KY5	<input type="checkbox"/> P <input type="checkbox"/> M		○
Two-tone Amazon Green DW0 / Techno Grey KY5	<input type="checkbox"/> M		○
Two-tone Starburst Silver KLO / Techno Grey KY5	<input type="checkbox"/> M		○

- M Metallic
- P Pearlescent
- Standard
- Optional

UPHOLSTERY

TECHNICAL SPECIFICATIONS

Model		2.7 litre turbo diesel engine		3.0 litre turbo diesel engine	
		3-door	5-door	3-door	5-door
Available grades		SE		SVE	
Seating capacity	persons	5	7	5	7
Engine		TD27Ti		ZD30Ti	
Engine code		4, in line		4, in line	
No. of cylinders, configuration		2		4	
Valves per cylinder		Turbo charged, intercooler		Turbo charged, intercooler	
Air intake system		2664		2953	
Engine capacity	cm ³	96.0x92.0		96.0x102.0	
Bore x Stroke	mm	92[125] / 3600		113 [154] / 3600	
Max. engine power ¹⁾	kW[hp]/min-1	278/2000		304 / 1600 (343 / 2000)	
Max. torque ¹⁾	Nm/min-1	21.9 ± 0.2		17.9 ± 0.8	
Compression ratio		Diesel		Diesel	
Fuel type		Indirect injection		Direct injection	
Fuel supply		EGR		Oxidation Catalyst, EGR	
Emission control system					
Drive Train					
Clutch type		Dry plate, mechanical		Dry plate, mechanical (Torque converter)	
Transmission		5-speed manual		5-speed manual (4-speed automatic)	
Gear ratio	1st	3.580		3.580 (2.785)	
	2nd	2.077		2.077 (1.545)	
	3rd	1.360		1.360 (1.000)	
	4th	1.000		1.000 (0.694)	
	5th	0.811		0.811 (-)	
	Reverse	3.636		3.636 (2.272)	
Transfer ratio high / low		1.000 / 2.020			
Final drive ratio and type		4.375 - Limited Slip Differential		3.900 (4.083) - Limited Slip Differential	
Driven wheels		4WD [part time]		4WD [part time]	
Chassis					
Suspension front / rear		Independent, double wishbone with torsion and anti-roll bar / Live axle located by 5 links with coil springs and anti-roll bar		Recirculating ball, power assisted	
Steering		Ventilated disc		front, drum rear, front / rear split circuit, power assisted with EBD (Electronic 3 channel / 5 sensor ABS)	
Braking system		7JJ x 17		235/65 R17	
Wheel size					
Tyre					
Weights & Dimensions					
Kerb weight min./max. ²⁾	kg	1724 / 1798	1840 / 1918	1758 / 1815	1878 / 1935 (1908 / 1965)
Gross Vehicle Weight	kg	2510	2580	2510	2580
Max. payload ²⁾	kg	786	740	752	702 (672)
Max. axle weight front / rear	kg	1160 / 1460		1200 / 1460	
Max. trailer weight braked / unbraked	kg	2800 / 750		3000 (2000) / 750	
Max. vert. load on coupling point	kg	120		120	
Max. roof load	kg			100	
Overall length / width / height*	mm	4242 / 1755 / 1805	4722 / 1755 / 1810	4242 / 1755 / 1805	4722 / 1755 / 1810
Wheelbase	mm	2450	2650	2450	2650
Track front / rear	mm	1455 / 1430			
Luggage space	- min. length	1200		1200	
	- min. width**	1050		1050	
	- min. height	898		898	
Luggage capacity (VDA) rear seats unfolded/folded	l [cu-ft]	335 / 1650 [11.8 / 58.2]	115 / 1900 [4.1 / 67.1]	335 / 1650 [11.8 / 58.2]	115 / 1900 [4.1 / 67.1]
Fuel tank capacity	l	72	80	72	80
Performance					
Fuel consumption ³⁾	Urban cycle	l/100 km [mpg]	11.8 [23.9]	11.9 [23.7]	11.3 [25.0]
	Extra-urban	l/100 km [mpg]	8.6 [32.8]	8.7 [32.5]	7.4 [38.2]
	Combined	l/100 km [mpg]	9.8 [28.8]	9.9 [28.5]	8.8 [32.1]
CO ₂ mass emission	g/km	260	263	232	240 (262)
Max. speed	mph [km/h]	96 [155]	96 [155]	105 [170]	105 [170] (103 [166])
Acceleration 0 - 100 km/h	sec	15.7	16.5	13.3	13.5 (14.0)
Min. turning circle (kerb to kerb)	metres	10.8	11.4	10.8	11.4

Data for automatic transmission in (brackets)

* Excluding roofrails

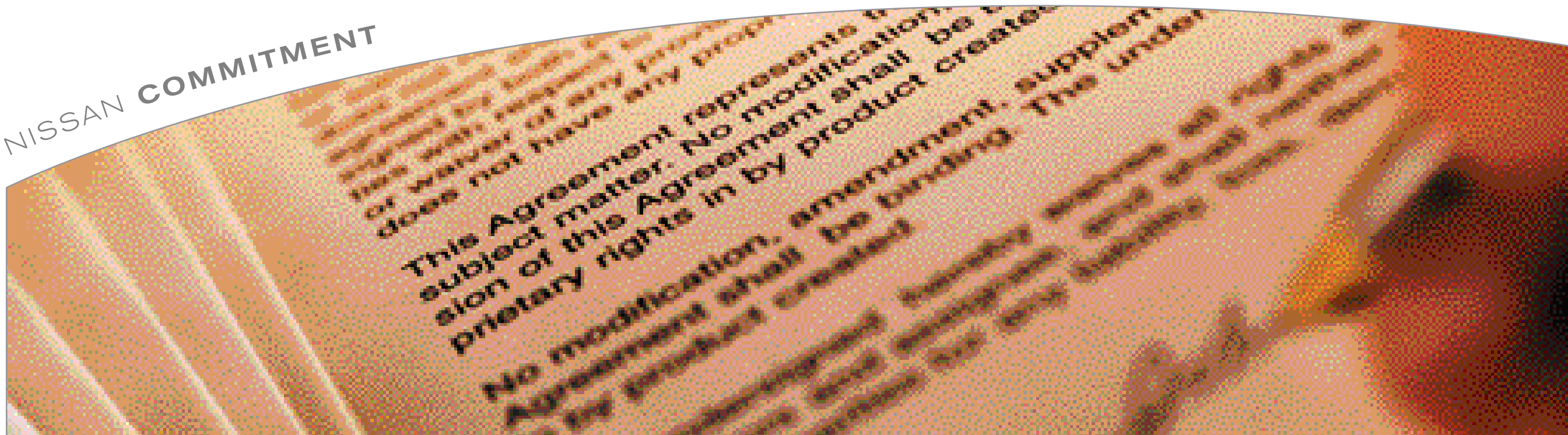
** Between wheel arches

1) In accordance with 89/491/EEC or 97/21/EC.

2) Figures in accordance with EC directive. Kerb weight condition is without driver and including coolant, oils, fuel, spare wheel and tools. Payload will be reduced depending on the options and/or accessories installed.

3) In accordance with 93/116/EC. (Optional equipment, maintenance, driving technique, road and weather conditions may affect the official results).

NISSAN COMMITMENT



Ownership

The Nissan philosophy of continuous improvement means we have a different approach to building cars. To make sure that every Nissan meets the real-life needs of its owner, we ask current Nissan drivers what they think of their cars before we start designing. Then there's our tough testing programme. To maintain our excellent reputation for reliability, dependability and safety, we test every single component to destruction. Finally, as the car is assembled, every worker checks his own job as well as that of the person before, ensuring our renowned standards of build quality and attention to detail.

KEEPING THINGS LOCAL

Nissan is committed to keeping its European operations on a local basis. There's a design centre in Great Britain. Technology Centres in Great Britain, Spain and Belgium. Manufacturing plants in Great Britain and Spain. Parts and vehicle distribution in the Netherlands. And our European headquarters in France. Because only through this structure can we continue to produce vehicles to suit the requirements of the people who'll actually drive them. And guarantee that somewhere, within our wide range of models available in Europe, there is one perfect for you.

AFTER-SALES SUPPORT

Our rigorous testing programme gives us the confidence to offer a comprehensive range of after-sales guarantees. The Terrano is covered by a 3-year or 60,000 miles warranty (whichever comes first), 3-year paint warranty and 6-year anti-corrosion warranty. For extra peace of mind, we also offer a 12-month RAC roadside assistance package. And Nissan insurance can provide you with comprehensive car insurance. Just call 0870 125 6622 for a quote.