



2023
SILVERADO HD

THE STRONGEST, MOST CAPABLE SILVERADO HD EVER.

With its legendary combination of heavy-duty strength and real-world capability, Silverado HD is only happy when the day is long and the work is hard.

That can-do attitude starts with tested powertrain options ready to take on the biggest jobs. In fact, every Silverado HD Dually paired with the available Duramax® 6.6L V8 can pull over 30,000 lbs.¹ (18,500 lbs. as shown). You can also count on standard and available trailering features designed to make a long day of towing easy. The highly functional Durabed shares the same dedication, as does the available Multi-Flex Tailgate with six different functions designed to help you load, unload and access the cargo bed more easily.

Silverado HD stands ready to take on any task from start to finish.



2500 HD Crew Cab Standard Bed High Country 4x4 in Greenstone Metallic with available Duramax 6.6L Turbo-Diesel V8 engine and additional available features.

¹ Maximum trailering ratings are intended for comparison purposes only. Before you buy a vehicle or use it for trailering, carefully review the Trailering section of the Owner's Manual. The trailering capacity of your specific vehicle may vary. The weight of passengers, cargo and options or accessories may reduce the amount you can trailer.

AT A GLANCE.

- Five models: WT, Custom, LT, LTZ and High Country
- 2WD or 4x4 available on all models
- 6.6L V8 gas engine and 6-speed transmission:
401 horsepower and 464 lb.-ft. of torque
- Available Duramax 6.6L Turbo-Diesel V8 engine and Allison® 10-speed transmission:
445 horsepower and 910 lb.-ft. of torque
- 7,442 lbs. of maximum payload¹
- 36,000 lbs. maximum trailerling weight^{2,3} with available diesel engine
- Every Silverado HD Dually paired with the available Duramax 6.6L V8 can pull over 30,000 lbs.³
- 17,370 lbs. maximum trailerling weight^{3,4} with gas engine
- Available Advanced Trailerling System with an In-Vehicle App⁵ and myChevrolet Mobile App⁶
- 8 available cameras provide up to 15 unique views⁷
- Durabed with 12 standard tie-downs
- Cargo volume:⁸
 - Standard Bed: 69.6 cu. ft.
 - Long Bed: 83.5 cu. ft.
- Multi-Flex Tailgate with 6 different functions available on all models
- Available segment-exclusive power-up/-down tailgate



Available Multi-Flex Tailgate.



2500 HD Crew Cab High Country interior in Jet Black with Umber accents and available features.

¹ Requires Silverado 3500 HD Regular Cab Long Bed 2WD DRW. These maximum payload ratings are intended for comparison purposes only. Before you buy a vehicle or use it to haul people or cargo, carefully review the Vehicle Loading section of the Owner's Manual and check the carrying capacity of your specific vehicle on the label on the inside of the driver door jamb. ² Requires Silverado 3500 HD Regular Cab WT 2WD DRW with available Duramax 6.6L Turbo-Diesel V8 engine, Max Trailerling Package and gooseneck hitch. ³ Maximum trailerling ratings are intended for comparison purposes only. Before you buy a vehicle or use it for trailerling, carefully review the Trailerling section of the Owner's Manual. The trailerling capacity of your specific vehicle may vary. The weight of passengers, cargo and options or accessories may reduce the amount you can trailer. ⁴ Requires Silverado 2500 HD Regular Cab Long Bed with 17" wheels and available fifth-wheel/gooseneck hitch. ⁵ App functionality and features vary with vehicle equipment and trim level. Data connection may be required. Some features require active service plan and working electrical system. User terms and limitations apply. ⁶ Device data connection required. Available on select Apple and Android devices. Some features require active service plan and working electrical system. Service availability, features and functionality vary by vehicle. Terms and limitations apply. Visit onstar.com for details and limitations. ⁷ Safety or driver assistance features are no substitute for the driver's responsibility to operate the vehicle in a safe manner. Read the vehicle Owner's Manual for important feature limitations and information. Some camera views require available accessory camera and installation. Not compatible with all trailers. See your dealer for details. ⁸ Cargo and load capacity limited by weight and distribution.

FIVE MODELS TO CHOOSE FROM.



WT

Pick a job. Any job.

- Heavy-duty air filter with air filtration monitoring
- External engine and transmission oil coolers
- [Trailer Package](#)
- Automatic locking rear differential
- Fully boxed high-strength steel frame
- Durabed with 12 standard tie-downs
- Integrated BedSteps and CornerStep rear bumper
- Cargo area lighting
- Vertical trailer mirrors
- Available Multi-Flex Tailgate
- Durable vinyl or available cloth seats and a rubberized-vinyl floor for easy cleanup
- Rear Vision Camera¹
- Available Bed View Camera¹
- Available [WT Safety Package](#)
- Available [WT Convenience Package](#)



CUSTOM (2500 HD ONLY)

Hardworking. Good-looking.

- Available on Double Cab and Crew Cab models
- 20-inch machined-aluminum wheels with all-terrain tires
- Power-adjustable vertical trailer mirrors with heated upper glass and integrated turn signal indicators
- Available Multi-Flex Tailgate
- Cloth seating surfaces
- Power windows and door locks
- Remote Keyless Entry
- Available remote vehicle starter system
- Available Bed View Camera¹
- Available [Custom Value Package](#)
- Available [Safety Confidence Package](#)



LT

Classic appeal. Complete capability.

- Power lock and release EZ Lift tailgate
- Cloth seating surfaces or available leather-appointed seating surfaces
- 8-inch diagonal color touch-screen display
- Available Multi-Flex Tailgate
- Available 20-inch aluminum wheels
- Available 120-volt bed-mounted outlet
- Available roof marker lamps
- Available fog lamps
- Available [Convenience Package](#)
- Available [Safety Package](#)
- Available [All Star Edition](#)
- Available [Z71 Off-Road and Protection Package](#)
- Available [Duramax and Appearance Package](#)

Available Special Editions
[Midnight Edition](#)
[Z71 Sport Edition](#)
[Z71 Chrome Sport Edition](#)

¹ Safety or driver assistance features are no substitute for the driver's responsibility to operate the vehicle in a safe manner. Read the vehicle Owner's Manual for important feature limitations and information.

FIVE MODELS TO CHOOSE FROM.



LTZ

Premium style. Hardworking substance.

- [Advanced Trailering System](#)
- Hitch Guidance with Hitch View¹
- LED headlamps, taillamps, daytime running lamps and fog lamps
- Available power-up/-down tailgate or Multi-Flex Tailgate
- Available Bed View Camera¹
- Keyless Open and Start
- 10-way power adjusters for driver and front outboard passenger seats
- Perforated leather-appointed front seats
- Memory for power driver seat and exterior mirror settings
- Available [Safety Package](#)
- Available [Technology Package](#)

Available Special Editions
[Midnight Edition](#)
[Z71 Sport Edition](#)
[Z71 Chrome Sport Edition](#)
[Carhartt® Edition²](#)



HIGH COUNTRY

The perfect combination of luxury and capability.

- [Advanced Trailering System](#)
- Hitch Guidance with Hitch View¹
- Chrome and bronze grille
- 20-inch polished-aluminum wheels
- 6-inch chrome assist steps or available power-retractable assist steps
- Power-up/-down tailgate or available Multi-Flex Tailgate
- Bed View Camera¹
- LED cargo area lighting
- Keyless Open and Start
- Perforated leather seating surfaces
- Unique Jet Black/Umber or Jet Black interior
- HD Surround Vision¹
- Bose premium 7-speaker sound system
- SiriusXM® with 360L³ – 3-month trial subscription to SXM Platinum Plan
- Rear Cross Traffic Alert¹ and Lane Change Alert with Side Blind Zone Alert¹
- Available [Safety Package II](#)
- Available [High Country Deluxe](#)

¹ Safety or driver assistance features are no substitute for the driver's responsibility to operate the vehicle in a safe manner. Read the vehicle Owner's Manual for important feature limitations and information. ² 2500 HD Crew Cab only. ³ If you decide to continue service after your trial, your selected subscription plan will automatically renew thereafter. You will be charged at then-current rates. Fees and taxes apply. To cancel you must call SiriusXM at 1-866-635-2349. See SiriusXM Customer Agreement for complete terms at siriusxm.com. All fees and programming subject to change. Certain features require a SiriusXM subscription and the Chevrolet Connected Access plan. See siriusxm.com and onstar.com for details and limitations.

MAKE BIG HAULS WITH LITTLE EFFORT.

Silverado HD offers advanced towing tech to help give you peace of mind when you're pulling a heavy load.

- Standard Trailering Package includes a trailer hitch with a 2.5-inch receiver and a 2-inch insert, a 7-pin wiring connector and Hitch Guidance¹
- Vertical trailering mirrors are standard on all trims
- Additional standard features include StabiliTrak[®] with Electronic Trailer Sway Control and Hill Start Assist, Tow/Haul mode and Auto Grade Braking
- Optimized cargo bed rail height allows clearance for fifth-wheel and gooseneck trailers
- Integrated BedSteps enable easy access to the front of the bed, even with a fifth-wheel or gooseneck trailer hitched
- Trailering Information Label located on the driver-side door jamb provides vehicle-specific information along with vital towing capabilities
- The available Advanced Trailering System with an In-Vehicle App² offers customized trailer profiles, pre-departure checklists, trailer lighting diagnostics, a Trailer Tire Pressure Monitoring System³ module, and the ability to create and sync trailer profiles with the myChevrolet Mobile App⁴
- Additional available features include Trailer Theft Alert, Electric Parking Brake hookup assist and Brake Gain Memory on the integrated trailer brake controller



3500 HD Crew Cab Long Bed LT 2WD DRW in Black with available features.



Available Advanced Trailering System.

Trailering Guide >

¹ Safety or driver assistance features are no substitute for the driver's responsibility to operate the vehicle in a safe manner. Read the vehicle Owner's Manual for important feature limitations and information. ² App functionality and features vary with vehicle equipment and trim level. Data connection may be required. Some features require active service plan and working electrical system. User terms and limitations apply. ³ Requires available Trailer Tire Pressure Monitor Sensors. ⁴ Device data connection required. Available on select Apple and Android devices. Some features require active service plan and working electrical system. Service availability, features and functionality vary by vehicle. Terms and limitations apply. Visit onstar.com for details and limitations.

CAMERA VIEWS TO HELP YOU TOW WITH CONFIDENCE.

Silverado HD offers advanced camera technologies, with 8 available cameras that give you up to 15 unique views!¹ From hitching to driving to parking, these features are designed to help make your towing job easier from start to finish.

Safety or driver assistance features are no substitute for the driver's responsibility to operate the vehicle in a safe manner. The driver should remain attentive to traffic, surroundings and road conditions at all times. Visibility, weather and road conditions may affect feature performance. Read the vehicle Owner's Manual for more important feature limitations and information.

¹ Some camera views require available accessory camera and installation. Not compatible with all trailers. See your dealer for details. ² Requires available Chevrolet Accessory Camera and installation. Not compatible with all trailers. Customers can see their dealer for full details.

- Four available hitch views
 - Hitch View
 - Surround View
 - Rear Top-Down View
 - Bed View
- Six available driving views
 - Transparent Trailer View²
 - Front Camera View
 - Pic-In-Pic Side View²
 - Rear Camera Mirror
 - Rear Trailer View²
 - Inside Trailer View²
- Five available parking views
 - Rear Camera View
 - Rear Side View/Rear Side View
(Turn Signal Activated)
 - Bowl View
 - Front Side View
 - Front Top-Down View



Transparent Trailer View²



Rear Trailer View²

Camera Technologies >

MODEL AVAILABILITY

REGULAR CAB – LONG BED



● AVAILABLE – NOT AVAILABLE

| TRIM | 2500 HD | 3500 HD SRW | 3500 HD DRW | STANDARD ENGINE | AVAILABLE ENGINE | 2WD | 4x4 |
|------|---------|-------------|-------------|-----------------|------------------|-----|-----|
| WT | ● | ● | ● | 6.6L V8 gas | Duramax 6.6L V8 | ● | ● |
| LT | ● | ● | ● | 6.6L V8 gas | Duramax 6.6L V8 | ● | ● |

DOUBLE CAB – STANDARD BED



| TRIM | 2500 HD | 3500 HD SRW | 3500 HD DRW | STANDARD ENGINE | AVAILABLE ENGINE | 2WD | 4x4 |
|--------|---------|-------------|-------------|-----------------|------------------|-----|-----|
| WT | ● | – | – | 6.6L V8 gas | Duramax 6.6L V8 | ● | ● |
| Custom | ● | – | – | 6.6L V8 gas | Duramax 6.6L V8 | ● | ● |
| LT | ● | – | – | 6.6L V8 gas | Duramax 6.6L V8 | ● | ● |
| LTZ | ● | – | – | 6.6L V8 gas | Duramax 6.6L V8 | ● | ● |

DOUBLE CAB – LONG BED



| TRIM | 2500 HD | 3500 HD SRW | 3500 HD DRW | STANDARD ENGINE | AVAILABLE ENGINE | 2WD | 4x4 |
|--------|---------|-------------|-------------|-----------------|------------------|-----|-----|
| WT | ● | ● | ● | 6.6L V8 gas | Duramax 6.6L V8 | ● | ● |
| Custom | ● | – | – | 6.6L V8 gas | Duramax 6.6L V8 | ● | ● |
| LT | ● | ● | ● | 6.6L V8 gas | Duramax 6.6L V8 | ● | ● |
| LTZ | ● | – | – | 6.6L V8 gas | Duramax 6.6L V8 | ● | ● |

CREW CAB – STANDARD BED



| TRIM | 2500 HD | 3500 HD SRW | 3500 HD DRW | STANDARD ENGINE | AVAILABLE ENGINE | 2WD | 4x4 |
|--------------|---------|-------------|-------------|-----------------|------------------|-----|-----|
| WT | ● | ● | – | 6.6L V8 gas | Duramax 6.6L V8 | ● | ● |
| Custom | ● | – | – | 6.6L V8 gas | Duramax 6.6L V8 | ● | ● |
| LT | ● | ● | – | 6.6L V8 gas | Duramax 6.6L V8 | ● | ● |
| LTZ | ● | ● | – | 6.6L V8 gas | Duramax 6.6L V8 | ● | ● |
| High Country | ● | ● | – | 6.6L V8 gas | Duramax 6.6L V8 | – | ● |

CREW CAB – LONG BED



| TRIM | 2500 HD | 3500 HD SRW | 3500 HD DRW | STANDARD ENGINE | AVAILABLE ENGINE | 2WD | 4x4 |
|--------------|---------|-------------|-------------|-----------------|------------------|-----|-----|
| WT | ● | ● | ● | 6.6L V8 gas | Duramax 6.6L V8 | ● | ● |
| Custom | ● | – | – | 6.6L V8 gas | Duramax 6.6L V8 | ● | ● |
| LT | ● | ● | ● | 6.6L V8 gas | Duramax 6.6L V8 | ● | ● |
| LTZ | ● | ● | ● | 6.6L V8 gas | Duramax 6.6L V8 | ● | ● |
| High Country | ● | ● | ● | 6.6L V8 gas | Duramax 6.6L V8 | – | ● |

PAYLOAD & TRAILERING WEIGHT RATINGS – 2500 HD

| MODEL | ENGINE | WHEEL SIZE | GVWR (LBS.) ¹ | MAX PAYLOAD (LBS.) ² | MAX CONVENTIONAL TRAILERING (LBS.) ³ | MAX GOOSENECK/ 5TH-WHEEL TRAILERING (LBS.) ³ |
|---------------------|-----------------|------------|--------------------------|---------------------------------|---|---|
| 2500 HD REGULAR CAB | | | | | | |
| Long Bed 2WD | 6.6L V8 gas | 17" | 9,900 | 3,757 | 14,500 | 17,370 |
| | 6.6L V8 gas | 17" | 10,000 | 3,857 | 14,500 | 17,370 |
| | 6.6L V8 gas | 18"/20" | 10,150 | 3,979 | 14,500 | 17,340 |
| | Duramax 6.6L V8 | 17" | 10,550 | 3,544 | 14,500 | 18,510 |
| | Duramax 6.6L V8 | 18"/20" | 10,750 | 3,715 | 14,500 | 18,480 |
| Long Bed 4x4 | 6.6L V8 gas | 17"/18" | 10,000 | 3,544 | 14,500 | 17,060 |
| | 6.6L V8 gas | 17" | 10,250 | 3,794 | 14,500 | 17,060 |
| | 6.6L V8 gas | 18"/20" | 10,450 | 3,965 | 14,500 ⁴ | 17,030 |
| | Duramax 6.6L V8 | 17" | 10,900 | 3,581 | 14,500 | 18,190 |
| | Duramax 6.6L V8 | 18"/20" | 11,025 | 3,715 | 14,500 ⁴ | 18,160 |

| MODEL | ENGINE | WHEEL SIZE | GVWR (LBS.) ¹ | MAX PAYLOAD (LBS.) ² | MAX CONVENTIONAL TRAILERING (LBS.) ³ | MAX GOOSENECK/ 5TH-WHEEL TRAILERING (LBS.) ³ |
|--------------------|-----------------|------------|--------------------------|---------------------------------|---|---|
| 2500 HD DOUBLE CAB | | | | | | |
| Standard Bed 2WD | 6.6L V8 gas | 17"/18" | 10,000 | 3,541 | 14,500 | 17,050 |
| | 6.6L V8 gas | 17" | 10,050 | 3,591 | 14,500 | 17,050 |
| | 6.6L V8 gas | 18"/20" | 10,250 | 3,762 | 14,500 | 17,000 |
| | Duramax 6.6L V8 | 17" | 10,700 | 3,390 | 14,500 | 18,200 |
| | Duramax 6.6L V8 | 18"/20" | 10,900 | 3,561 | 14,500 | 18,170 |
| Standard Bed 4x4 | 6.6L V8 gas | 17"/18" | 10,000 | 3,226 | 14,500 | 16,740 |
| | 6.6L V8 gas | 17" | 10,350 | 3,576 | 14,500 | 16,740 |
| | 6.6L V8 gas | 18"/20" | 10,550 | 3,747 | 14,500 ⁴ | 16,710 |
| | Duramax 6.6L V8 | 17"/18" | 10,000 | 2,375 | 14,500 | 12,610 |
| | Duramax 6.6L V8 | 17" | 11,000 | 3,375 | 14,500 | 17,890 |
| | Duramax 6.6L V8 | 18"/20" | 11,200 | 3,546 | 14,500 ⁴ | 17,860 |
| Long Bed 2WD | 6.6L V8 gas | 17"/18" | 10,000 | 3,420 | 14,500 | 16,930 |
| | 6.6L V8 gas | 17" | 10,200 | 3,620 | 14,500 | 16,930 |
| | 6.6L V8 gas | 18"/20" | 10,400 | 3,792 | 14,500 | 16,900 |
| | Duramax 6.6L V8 | 17" | 10,900 | 3,424 | 14,500 | 18,040 |
| | Duramax 6.6L V8 | 18"/20" | 11,100 | 3,595 | 14,500 | 18,010 |
| Long Bed 4x4 | 6.6L V8 gas | 17"/18" | 10,000 | 3,133 | 14,500 | 16,650 |
| | 6.6L V8 gas | 17" | 10,500 | 3,633 | 14,500 | 16,650 |
| | 6.6L V8 gas | 18"/20" | 10,750 | 3,854 | 14,500 ⁴ | 16,620 |
| | Duramax 6.6L V8 | 17"/18" | 10,000 | 2,236 | 14,500 | 11,690 |
| | Duramax 6.6L V8 | 17" | 11,200 | 3,436 | 14,500 | 17,750 |
| | Duramax 6.6L V8 | 18"/20" | 11,450 | 3,657 | 14,500 ⁴ | 17,720 |

Trailer

¹ Maximum Gross Vehicle Weight Rating (GVWR). When properly equipped; includes weight of vehicle, passengers, cargo and equipment. ² These maximum payload ratings are intended for comparison purposes only. Before you buy a vehicle or use it to haul people or cargo, carefully review the Vehicle Loading section of the Owner's Manual and check the carrying capacity of your specific vehicle on the label on the inside of the driver door jamb. ³ Maximum trailering ratings are intended for comparison purposes only. Before you buy a vehicle or use it for trailering, carefully review the Trailering section of the Owner's Manual. The trailering capacity of your specific vehicle may vary. The weight of passengers, cargo and options or accessories may reduce the amount you can trailer. ⁴ With available 18" mud-terrain tires (QG3), maximum conventional towing is 12,000 lbs.

PAYLOAD & TRAILERING WEIGHT RATINGS – 2500 HD

| MODEL | ENGINE | WHEEL SIZE | GVWR (LBS.) ¹ | MAX PAYLOAD (LBS.) ² | MAX CONVENTIONAL TRAILERING (LBS.) ³ | MAX GOOSENECK/ 5TH-WHEEL TRAILERING (LBS.) ³ |
|-------------------------------|-----------------|------------|--------------------------|---------------------------------|---|---|
| 2500 HD CREW CAB | | | | | | |
| Standard Bed 2WD | 6.6L V8 gas | 17"/18" | 10,000 | 3,429 | 14,500 | 16,940 |
| | 6.6L V8 gas | 17" | 10,150 | 3,579 | 14,500 | 16,940 |
| | 6.6L V8 gas | 18"/20" | 10,350 | 3,751 | 14,500 | 16,900 |
| | Duramax 6.6L V8 | 17" | 10,000 | 2,532 | 14,500 | 13,660 |
| | Duramax 6.6L V8 | 18"/20" | 10,000 | 2,561 | 18,140 | 13,470 |
| | Duramax 6.6L V8 | 17" | 10,800 | 3,332 | 14,500 | 18,050 |
| | Duramax 6.6L V8 | 18"/20" | 11,050 | 3,553 | 18,500 | 18,500 |
| Standard Bed 4x4 | 6.6L V8 gas | 17"/18" | 10,000 | 3,139 | 14,500 | 16,650 |
| | 6.6L V8 gas | 17" | 10,450 | 3,589 | 14,500 | 16,650 |
| | 6.6L V8 gas | 18"/20" | 10,650 | 3,760 | 14,500 ⁴ | 16,620 |
| | Duramax 6.6L V8 | 17" | 10,000 | 2,241 | 14,500 | 11,720 |
| | Duramax 6.6L V8 | 18"/20" | 10,000 | 2,213 | 17,850 | 11,530 |
| | Duramax 6.6L V8 | 17" | 11,150 | 3,391 | 14,500 | 17,750 |
| | Duramax 6.6L V8 | 18"/20" | 11,350 | 3,563 | 18,500 ⁴ | 18,500 |
| Standard Bed High Country 4x4 | 6.6L V8 gas | 20" | 10,650 | 3,413 | 14,500 | 16,280 |
| | Duramax 6.6L V8 | 20" | 11,350 | 3,229 | 18,500 | 18,310 |

| MODEL | ENGINE | WHEEL SIZE | GVWR (LBS.) ¹ | MAX PAYLOAD (LBS.) ² | MAX CONVENTIONAL TRAILERING (LBS.) ³ | MAX GOOSENECK/ 5TH-WHEEL TRAILERING (LBS.) ³ |
|------------------------------|-----------------|------------|--------------------------|---------------------------------|---|---|
| 2500 HD CREW CAB (CONTINUED) | | | | | | |
| Long Bed 2WD | 6.6L V8 gas | 17"/18" | 10,000 | 3,329 | 14,500 | 16,840 |
| | 6.6L V8 gas | 17" | 10,300 | 3,629 | 14,500 | 16,840 |
| | 6.6L V8 gas | 18"/20" | 10,500 | 3,800 | 14,500 | 16,810 |
| | Duramax 6.6L V8 | 17" | 10,000 | 2,365 | 14,500 | 12,550 |
| | Duramax 6.6L V8 | 18"/20" | 10,000 | 2,336 | 17,970 | 12,350 |
| | Duramax 6.6L V8 | 17" | 11,000 | 3,365 | 14,500 | 17,880 |
| | Duramax 6.6L V8 | 18"/20" | 11,200 | 3,536 | 18,500 | 18,500 |
| Long Bed 4x4 | 6.6L V8 gas | 17"/18" | 10,000 | 3,040 | 14,500 | 16,550 |
| | 6.6L V8 gas | 17" | 10,650 | 3,690 | 14,500 | 16,550 |
| | 6.6L V8 gas | 18"/20" | 10,850 | 3,862 | 14,500 ⁴ | 16,520 |
| | Duramax 6.6L V8 | 17" | 10,000 | 2,076 | 14,500 | 10,620 |
| | Duramax 6.6L V8 | 18"/20" | 10,000 | 2,047 | 16,560 | 10,240 |
| | Duramax 6.6L V8 | 17" | 11,350 | 3,426 | 14,500 | 17,590 |
| | Duramax 6.6L V8 | 18"/20" | 11,550 | 3,597 | 18,500 ⁴ | 18,500 |
| Long Bed High Country 4x4 | 6.6L V8 gas | 20" | 10,850 | 3,506 | 14,500 | 16,170 |
| | Duramax 6.6L V8 | 20" | 11,550 | 3,337 | 18,500 | 18,500 |

Trailer Guide >

¹ Maximum Gross Vehicle Weight Rating (GVWR). When properly equipped; includes weight of vehicle, passengers, cargo and equipment. ² These maximum payload ratings are intended for comparison purposes only. Before you buy a vehicle or use it to haul people or cargo, carefully review the Vehicle Loading section of the Owner's Manual and check the carrying capacity of your specific vehicle on the label on the inside of the driver door jamb. ³ Maximum trailering ratings are intended for comparison purposes only. Before you buy a vehicle or use it for trailering, carefully review the Trailering section of the Owner's Manual. The trailering capacity of your specific vehicle may vary. The weight of passengers, cargo and options or accessories may reduce the amount you can trailer. ⁴ With available 18" mud-terrain tires (QG3), maximum conventional towing is 12,000 lbs.

PAYLOAD & TRAILERING WEIGHT RATINGS – 3500 HD

| MODEL | ENGINE | WHEEL SIZE | GVWR (LBS.) ¹ | MAX PAYLOAD (LBS.) ² | MAX CONVENTIONAL TRAILERING (LBS.) ³ | MAX GOOSENECK/ 5TH-WHEEL TRAILERING (LBS.) ³ |
|---------------------|-----------------|-----------------|--------------------------|---------------------------------|---|--|
| 3500 HD REGULAR CAB | | | | | | |
| Long Bed 2WD SRW | 6.6L V8 gas | 18"/20" | 10,750 | 4,481 | 14,500 | 17,200 |
| | Duramax 6.6L V8 | 18"/20" | 11,500 | 4,215 | 14,500 | 21,500 |
| Long Bed 4x4 SRW | 6.6L V8 gas | 18"/20" | 11,100 | 4,534 | 14,500 | 16,950 |
| | Duramax 6.6L V8 | 18"/20" | 11,800 | 4,217 | 14,500 | 21,500 |
| Long Bed 2WD DRW | 6.6L V8 gas | 17" | 14,000 | 7,442 | 16,800 | 16,800 |
| | Duramax 6.6L V8 | 17" (5th-Wheel) | 14,000 | 6,523 | 20,000 | 32,000 |
| | Duramax 6.6L V8 | 17" (Gooseneck) | 14,000 | 6,465 | 20,000 | 36,000 ⁴ |
| Long Bed 4x4 DRW | 6.6L V8 gas | 17" | 14,000 | 7,145 | 16,800 | 16,710 |
| | Duramax 6.6L V8 | 17" | 14,000 | 6,196 | 20,000 | 31,760 |
| 3500 HD DOUBLE CAB | | | | | | |
| Long Bed 2WD SRW | 6.6L V8 gas | 18"/20" | 11,100 | 4,373 | 14,500 | 16,700 |
| | Duramax 6.6L V8 | 18"/20" | 11,850 | 4,130 | 14,500 | 21,490 |
| Long Bed 4x4 SRW | 6.6L V8 gas | 18"/20" | 11,400 | 4,391 | 14,500 | 16,500 |
| | Duramax 6.6L V8 | 18"/20" | 12,150 | 4,148 | 14,500 | 21,210 |
| Long Bed 2WD DRW | 6.6L V8 gas | 17" | 14,000 | 6,985 | 16,400 | 16,400 |
| | Duramax 6.6L V8 | 17" | 14,000 | 6,059 | 20,000 | 31,500 |
| Long Bed 4x4 DRW | 6.6L V8 gas | 17" | 14,000 | 6,703 | 16,390 | 16,270 |
| | Duramax 6.6L V8 | 17" | 14,000 | 5,777 | 20,000 | 31,340 |

| MODEL | ENGINE | WHEEL SIZE | GVWR (LBS.) ¹ | MAX PAYLOAD (LBS.) ² | MAX CONVENTIONAL TRAILERING (LBS.) ³ | MAX GOOSENECK/ 5TH-WHEEL TRAILERING (LBS.) ³ |
|---|-----------------|------------|--------------------------|---------------------------------|---|--|
| 3500 HD CREW CAB | | | | | | |
| Standard Bed 2WD SRW | 6.6L V8 gas | 18"/20" | 11,000 | 4,316 | 14,500 | 16,700 |
| | Duramax 6.6L V8 | 18"/20" | 11,750 | 4,135 | 20,000 | 21,500 |
| Standard Bed 4x4 SRW | 6.6L V8 gas | 18"/20" | 11,350 | 4,365 | 14,500 | 16,530 |
| | Duramax 6.6L V8 | 18"/20" | 12,100 | 4,185 | 20,000 | 21,300 |
| Standard Bed High Country 4x4 SRW | 6.6L V8 gas | 20" | 11,350 | 4,068 | 14,500 | 16,230 |
| | Duramax 6.6L V8 | 20" | 12,100 | 3,915 | 20,000 | 21,030 |
| Long Bed 2WD SRW | 6.6L V8 gas | 18"/20" | 11,150 | 4,333 | 14,500 | 16,700 |
| | Duramax 6.6L V8 | 18"/20" | 11,900 | 4,013 | 20,000 | 21,330 |
| Long Bed 4x4 SRW | 6.6L V8 gas | 18"/20" | 11,500 | 4,398 | 14,500 | 16,410 |
| | Duramax 6.6L V8 | 18"/20" | 12,250 | 4,078 | 20,000 | 21,040 |
| Long Bed High Country 4x4 SRW | 6.6L V8 gas | 20" | 11,500 | 4,093 | 14,500 | 16,110 |
| | Duramax 6.6L V8 | 20" | 12,250 | 3,947 | 20,000 | 20,910 |
| Long Bed 2WD DRW | 6.6L V8 gas | 17" | 14,000 | 6,894 | 16,300 | 16,200 |
| | Duramax 6.6L V8 | 17" | 14,000 | 5,892 | 20,000 | 31,400 |
| Long Bed 4x4 DRW | 6.6L V8 gas | 17" | 14,000 | 6,610 | 16,240 | 16,120 |
| | Duramax 6.6L V8 | 17" | 14,000 | 5,662 | 20,000 | 31,180 |
| Long Bed High Country 4x4 DRW | 6.6L V8 gas | 17" | 14,000 | 6,390 | 16,020 | 15,900 |
| | Duramax 6.6L V8 | 17" | 14,000 | 5,488 | 20,000 | 31,000 |

TraileringsGuide >

¹ Maximum Gross Vehicle Weight Rating (GVWR). When properly equipped; includes weight of vehicle, passengers, cargo and equipment. ² These maximum payload ratings are intended for comparison purposes only. Before you buy a vehicle or use it to haul people or cargo, carefully review the Vehicle Loading section of the Owner's Manual and check the carrying capacity of your specific vehicle on the label on the inside of the driver door jamb. ³ Maximum trailering ratings are intended for comparison purposes only. Before you buy a vehicle or use it for trailering, carefully review the Trailering section of the Owner's Manual. The trailering capacity of your specific vehicle may vary. The weight of passengers, cargo and options or accessories may reduce the amount you can trailer. ⁴ Requires WT with available Max Trailering Package.

WORK TRUCK (WT)



Summit White



Silver Ice Metallic



Red Hot



Greenstone Metallic



Northsky Blue Metallic



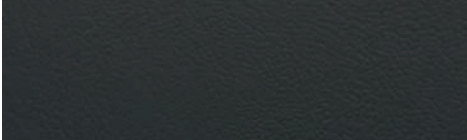
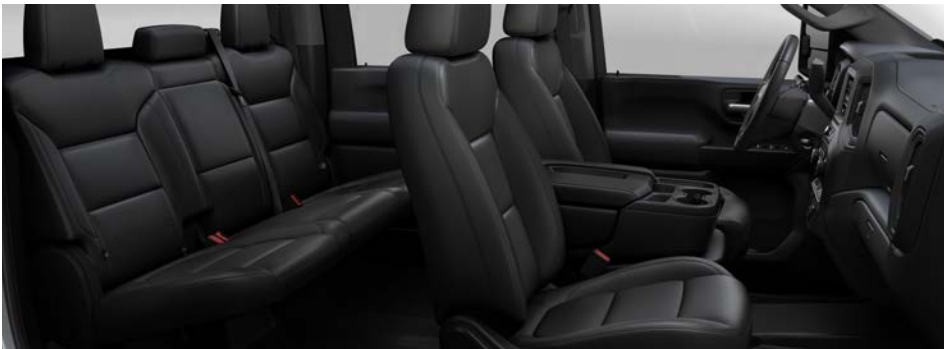
Black

WORK TRUCK (WT)



Available on 2500 HD and 3500 HD Regular Cab, Double Cab and Crew Cab.
In addition to [standard equipment](#), select WT features include:

| MECHANICAL |
|---|
| Hitch Guidance ¹ |
| Transfer case – 2-speed electronic (4x4 models) |
| EXTERIOR |
| Glass – solar-absorbing tinted |
| Headlamps – halogen reflector headlamps and daytime running lamps |
| Mirrors – vertical trailering, manual-adjustable, manual-folding and manual-extending with lower convex mirrors |
| Recovery hooks ² – Black |
| Tailgate – manual lift |
| INTERIOR |
| Air conditioning – single-zone |
| Audio – 2-speaker system (Regular Cab); 6-speaker system (Double Cab and Crew Cab) |
| Driver Information Center – 3.5-inch diagonal monochromatic display |
| Entertainment – Chevrolet Infotainment 3 system ³ with 7-inch diagonal color touch-screen |
| Floor covering – rubberized-vinyl |
| Rear Vision Camera ¹ |
| Seat – front 40/20/40 split-bench with covered armrest storage and 4-way manual driver and front passenger seat adjusters – rear 60/40 folding bench (Double Cab and Crew Cab) |
| Steering column – tilt-wheel manual steering column |
| Windows – manual (Regular Cab); power with driver express-up/-down, all others express-down (Double Cab and Crew Cab) |



Jet Black Vinyl (shown)



Jet Black Cloth

¹ Safety or driver assistance features are no substitute for the driver’s responsibility to operate the vehicle in a safe manner. Read the vehicle Owner’s Manual for important feature limitations and information. ² To avoid the risk of injury, never use recovery hooks to tow a vehicle. For more information, see the Recovery Hooks section of your Owner’s Manual. ³ Chevrolet Infotainment System functionality varies by model. Full functionality requires compatible Bluetooth and smartphone, and USB connectivity for some devices.

WORK TRUCK (WT)



17" Painted-Steel Wheels (PYN)
Standard on 2500 HD WT



17" Painted-Steel Wheels (PYW)
Standard on 3500 HD WT DRW



17" Painted-Steel Wheels with Chrome
Trim and Caps (PYW with P06)
Available on 3500 HD WT DRW



17" Forged Polished-Aluminum Wheels (RS7)
Available on 3500 HD WT DRW
with Max Trailerling Package



17" Machined-Aluminum Wheels (PYQ)
Available on 2500 HD WT



18" Painted-Steel Wheels (PYT)
Standard on 3500 HD WT SRW;
available on 2500 HD WT



18" Machined-Aluminum Wheels
with Silver-Painted Accents (PYV)
Available on 3500 HD WT SRW



18" High-Gloss Black Aluminum Wheels (PTW)
Included on 2500 HD WT and 3500 HD WT SRW
with Alaskan Snow Plow Special Edition

CUSTOM



Summit White



Silver Ice Metallic



Red Hot



Greenstone Metallic



Northsky Blue Metallic

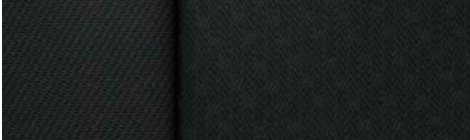
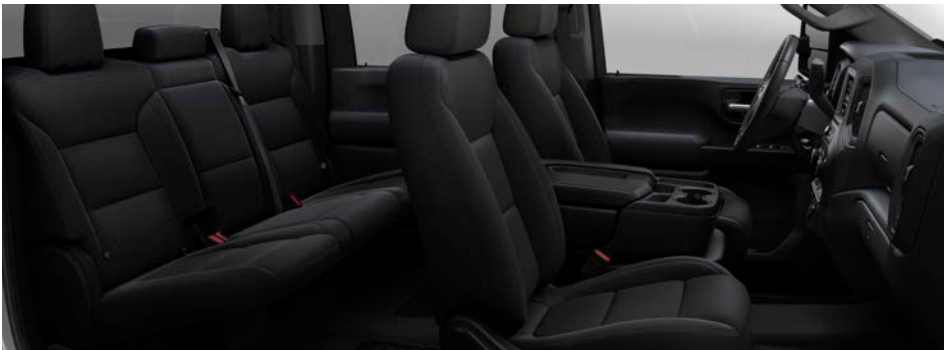


Mosaic Black Metallic



Black

CUSTOM



Jet Black Cloth (shown)



Jet Black Cloth³

Available on 2500 HD Double Cab and Crew Cab. In addition to [standard equipment](#), select Custom features include:

| MECHANICAL |
|--|
| Hitch Guidance ¹ |
| Transfer case – 2-speed electronic (4x4 models) |
| EXTERIOR |
| Glass – deep-tinted behind front doors |
| Mirrors – vertical trailering, heated upper glass, power-adjustable, manual-folding and manual-extending with lower convex mirrors and integrated turn signal indicators |
| Tailgate – manual lift |
| INTERIOR |
| Air conditioning – single-zone |
| Audio – 6-speaker system |
| Cruise control – electronic with Set and Resume Speed, steering wheel-mounted controls |
| Driver Information Center – 3.5-inch diagonal monochromatic display |
| Entertainment – Chevrolet Infotainment 3 system ² with 7-inch diagonal color touch-screen |
| Floor covering – color-keyed carpeting |
| Floor mats – vinyl, front and rear |
| Rear Vision Camera ¹ |
| Remote Keyless Entry |
| Seat – front 40/20/40 split-bench with covered armrest storage and 4-way manual driver and front passenger seat adjusters – rear 60/40 folding bench |
| Steering column – tilt-wheel manual steering column |
| Windows – power with driver express-up/-down, all others express-down |



20" 10-Spoke Machined-Aluminum Wheels with Grazen Metallic-Painted Accents (Q86)
Standard on 2500 HD Custom

¹ Safety or driver assistance features are no substitute for the driver's responsibility to operate the vehicle in a safe manner. Read the vehicle Owner's Manual for important feature limitations and information. ² Chevrolet Infotainment System functionality varies by model. Full functionality requires compatible Bluetooth and smartphone, and USB connectivity for some devices. ³ Requires available Custom Convenience Package, 10-way power driver seat adjuster and 120-volt power outlet.

LT



Summit White



Iridescent Pearl Tricoat¹



Silver Ice Metallic



Red Hot



Cherry Red Tintcoat¹



Greenstone Metallic



Northsky Blue Metallic



Mosaic Black Metallic



Black

¹Extra-cost color.

LT



Available on 2500 HD and 3500 HD Regular Cab, Double Cab and Crew Cab.
In addition to [standard equipment](#), select LT features include:

MECHANICAL

Hitch Guidance¹

Trailer brake controller – integrated

Transfer case – 2-speed electronic (4x4 models)

EXTERIOR

Glass – deep-tinted behind front doors

Mirrors – vertical trailering, heated upper glass, power-adjustable, manual-folding and manual-extending with lower convex mirrors and integrated turn signal indicators

Tailgate – EZ Lift, includes power lock and release

INTERIOR

Air conditioning – single-zone

Cruise control – electronic with Set and Resume Speed

Driver Information Center – 4.2-inch diagonal color display and driver personalization

Entertainment – Chevrolet Infotainment 3 system² with 8-inch diagonal color touch-screen

Floor covering – color-keyed carpeting

Floor mats – vinyl, front and rear

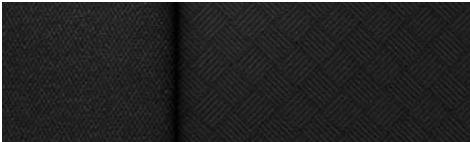
Rear Vision Camera¹

Remote Keyless Entry

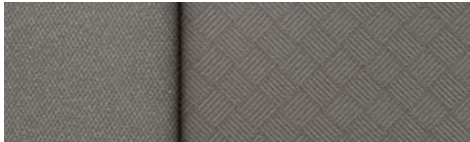
SiriusXM^{®3} – 3-month trial subscription to SXM Platinum Plan

Steering wheel – mounted audio, cruise and phone controls

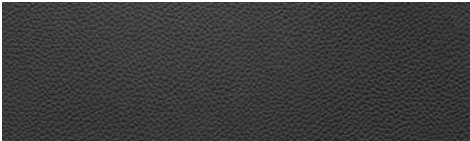
Windows – power with driver express-up/-down, passenger express-down



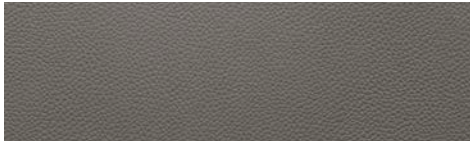
Jet Black Cloth



Gideon Cloth



Jet Black Leather-Appointed Front Seating



Gideon Leather-Appointed Front Seating (shown)

¹ Safety or driver assistance features are no substitute for the driver’s responsibility to operate the vehicle in a safe manner. Read the vehicle Owner’s Manual for important feature limitations and information. ² Chevrolet Infotainment System functionality varies by model. Full functionality requires compatible Bluetooth and smartphone, and USB connectivity for some devices. ³ If you decide to continue service after your trial, your selected subscription plan will automatically renew thereafter. You will be charged at then-current rates. Fees and taxes apply. To cancel you must call SiriusXM at 1-866-635-2349. See SiriusXM Customer Agreement for complete terms at [siriusxm.com](#). All fees and programming subject to change.

LT

17" Machined-Aluminum Wheels (PYQ)
Standard on 2500 HD LT



17" Painted-Steel Wheels
with Chrome Trim and Caps (PYW with P06)
Standard on 3500 HD LT DRW



18" Painted-Steel Wheels (PYT)
Available on 2500 HD LT and 3500 HD LT SRW



18" Machined-Aluminum Wheels
with Silver-Painted Accents (PYV)
Standard on 3500 HD LT SRW; available on 2500 HD LT



18" High-Gloss Black Aluminum Wheels (PTW)
Included on 2500 HD LT and 3500 HD LT SRW
with Alaskan Snow Plow Special Edition,
Midnight Edition or Z71 Sport Edition



20" 10-Spoke Machined-Aluminum Wheels
with Grazen Metallic-Painted Accents (Q86)
Available on 2500 HD LT and 3500 HD LT SRW;
included on 2500 HD LT and 3500 HD LT SRW with
Z71 Chrome Sport Edition



20" High-Gloss Black Aluminum Wheels
with Black Center Caps (NZD)
Available on 2500 HD LT and 3500 HD LT SRW
with Midnight Edition or Z71 Sport Edition

LTZ



Summit White



Iridescent Pearl Tricoat¹



Silver Ice Metallic



Red Hot



Cherry Red Tintcoat¹



Greenstone Metallic



Northsky Blue Metallic



Mosaic Black Metallic



Black

¹Extra-cost color.

LTZ



Available on 2500 HD and 3500 HD Double Cab and Crew Cab. In addition to [standard equipment](#), select LTZ features include:

MECHANICAL

Advanced Trailing System – includes trailing checklist, trailer maintenance reminders, trailer security alerts, trailer mileage, Tow/Haul mode reminder and trailer electrical diagnostics

Hitch Guidance with Hitch View¹

Transfer case – Autotrac[®] 2-speed active electronic (4x4 models)

EXTERIOR

Fog lamps – LED

Headlamps – high-intensity LED reflector headlamps with LED signature curtain daytime running lamps

Mirrors – vertical trailing, heated and auto-dimming upper glass (driver and passenger), power-adjustable, power-folding and power-extending with lower convex mirrors, integrated turn signal indicators, puddle lamps, perimeter lighting and auxiliary lighting with chrome mirror caps

Power outlet – 120-volt (up to 400 watts, shared with instrument panel 120-volt outlet), bed-mounted

Tailgate – EZ Lift, includes power lock and release

INTERIOR

Air conditioning – automatic, dual-zone with individual climate settings for driver and front passenger

Entertainment – Chevrolet Infotainment 3 Plus system² with 8-inch diagonal HD color touch-screen

Keyless Open and Start

Remote vehicle starter system

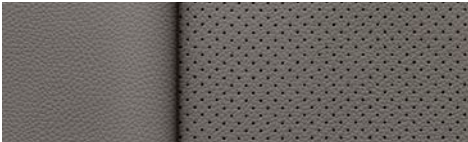
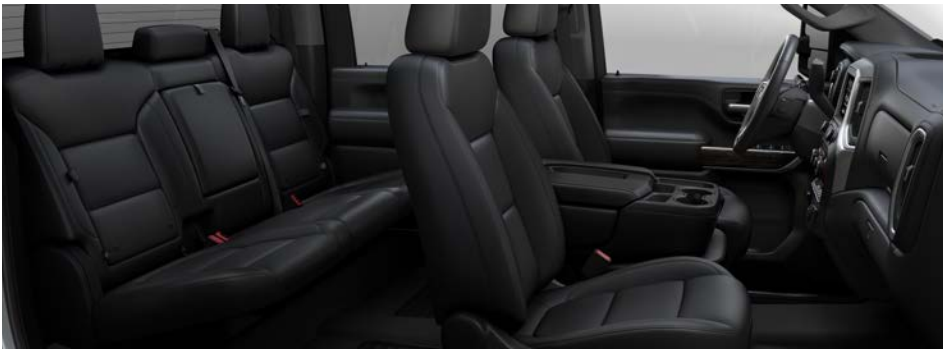
Seat – rear 60/40 folding bench with underseat storage and center foldout armrest with two cup holders (seatback storage included on Crew Cab)

Seats – 10-way power driver and front outboard passenger seat adjusters with power lumbar control

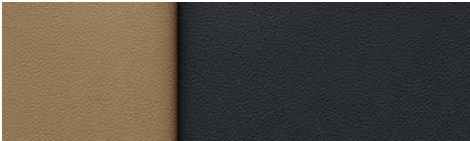
SiriusXM[®] with 360L³ – 3-month trial subscription to SXM Platinum Plan

Steering column – manual tilt/telescoping

Steering wheel – heated, wrapped, with mounted audio, cruise and phone controls



Jet Black Perforated Leather-Appointed Front Seating (shown) Gideon Perforated Leather-Appointed Front Seating



Carhartt[®] Brown Perforated Leather Seating Surfaces⁴

¹ Safety or driver assistance features are no substitute for the driver’s responsibility to operate the vehicle in a safe manner. Read the vehicle Owner’s Manual for important feature limitations and information. ² Chevrolet Infotainment System functionality varies by model. Full functionality requires compatible Bluetooth and smartphone, and USB connectivity for some devices. ³ If you decide to continue service after your trial, your selected subscription plan will automatically renew thereafter. You will be charged at then-current rates. Fees and taxes apply. To cancel you must call SiriusXM at 1-866-635-2349. See SiriusXM Customer Agreement for complete terms at siriusxm.com. All fees and programming subject to change. ⁴ Available only on 2500 HD Crew Cab 4x4. Requires available Carhartt Edition.

LTZ



17" Painted-Steel Wheels
with Chrome Trim and Caps (PYW with P06)
Standard on 3500 HD LTZ DRW



17" Forged Polished-Aluminum Wheels (RS7)
Available on 3500 HD LTZ DRW



18" Machined-Aluminum Wheels
with Silver-Painted Accents (PYV)
Standard on 2500 HD LTZ and 3500 HD LTZ SRW



18" High-Gloss Black Aluminum Wheels (PTW)
Included on 2500 HD LTZ and 3500 HD LTZ SRW
with Midnight Edition or Z71 Sport Edition



20" 10-Spoke Machined-Aluminum Wheels
with Grazen Metallic-Painted Accents (Q86)
Included on 2500 HD LTZ with Carhartt® Edition



20" High-Gloss Black Aluminum Wheels
with Black Center Caps (NZD)
Available on 2500 HD LTZ and 3500 HD LTZ SRW
with Midnight Edition or Z71 Sport Edition



20" 6-Spoke Polished-Aluminum Wheels (RTH)
Available on 2500 HD LTZ and 3500 HD LTZ SRW;
included on 2500 HD LTZ and 3500 HD LTZ SRW with
Z71 Chrome Sport Edition

HIGH COUNTRY



Summit White



Iridescent Pearl Tricoat¹



Silver Ice Metallic



Cherry Red Tintcoat¹



Greenstone Metallic



Northsky Blue Metallic



Mosaic Black Metallic



Black

¹Extra-cost color.

HIGH COUNTRY



Available on 2500 HD and 3500 HD Crew Cab 4x4. In addition to [standard equipment](#), select High Country features include:

MECHANICAL

Advanced Trailering System – includes trailering checklist, trailer maintenance reminders, trailer security alerts, trailer mileage, Tow/Haul mode reminder and trailer electrical diagnostics

Hitch Guidance with Hitch View¹

Transfer case – Autotrac 2-speed active electronic

EXTERIOR

Assist steps – chrome, 6-inch rectangular

Bedliner – Black Chevytec spray-on bedliner with High Country logo

Tailgate – power-up/-down with power lock and release

INTERIOR

Air conditioning – automatic, dual-zone with individual climate settings for driver and front passenger

Audio system – Bose premium 7-speaker sound system with Richbass subwoofer

Bed View Camera¹

Driver Information Center – enhanced 8-inch diagonal multi-color configurable display

Entertainment – Chevrolet Infotainment 3 Premium system² with Navigation³ and 8-inch diagonal HD color touch-screen

HD Surround Vision¹ – with two trailer camera provisions

Lane Change Alert with Side Blind Zone Alert¹

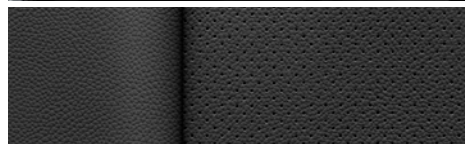
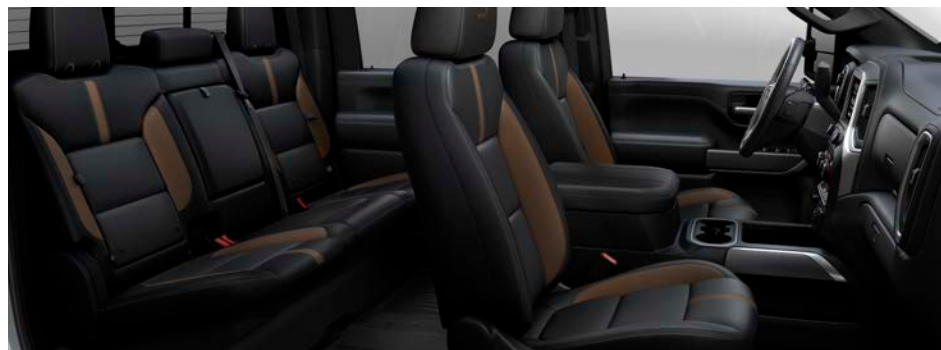
Rear Cross Traffic Alert¹

Seat – rear 60/40 folding bench with underseat storage and center foldout armrest with two cup holders

Seats – front bucket seats with center floor console

– heated and ventilated driver and front passenger; heated rear outboard seating positions

SiriusXM[®] with 360L⁴ – 3-month trial subscription to SXM Platinum Plan



Jet Black Perforated Leather Seating Surfaces



Jet Black/Umber Perforated Leather Seating Surfaces (shown)



17" Forged Polished-Aluminum Wheels (RS7)
Available on 3500 HD High Country DRW



20" 16-Spoke Polished-Aluminum Wheels (PYS)
Standard on 2500 HD High Country
and 3500 HD High Country SRW

¹ Safety or driver assistance features are no substitute for the driver's responsibility to operate the vehicle in a safe manner. Read the vehicle Owner's Manual for important feature limitations and information. ² Chevrolet Infotainment System functionality varies by model. Full functionality requires compatible Bluetooth and smartphone, and USB connectivity for some devices. ³ Map coverage available in the United States, Puerto Rico and Canada. ⁴ If you decide to continue service after your trial, your selected subscription plan will automatically renew thereafter. You will be charged at then-current rates. Fees and taxes apply. To cancel you must call SiriusXM at 1-866-635-2349. See SiriusXM Customer Agreement for complete terms at siriusxm.com. All fees and programming subject to change.

STANDARD EQUIPMENT

Standard on every Silverado HD:

| MECHANICAL |
|--|
| Air filter – heavy-duty with air filtration monitoring |
| Battery – heavy-duty |
| Brakes – 4-wheel antilock disc with Duralife® brake rotors and brake lining wear indicator |
| Cooling – external engine and transmission oil coolers |
| Differential – automatic locking rear |
| Engine – 6.6L V8 gas with Variable Valve Timing (VVT) and Direct Injection |
| Frame – fully boxed frame with hydroformed front section |
| StabiliTrak – Electronic Stability Control System and Traction Control; includes Electronic Trailer Sway Control and Hill Start Assist |
| Trailerling Information Label – provides maximum trailer ratings for tongue weight and conventional, gooseneck and 5th-wheel trailerling |
| Trailerling Package – trailer hitch with 2.5-inch receiver and 2-inch insert, 7-pin wiring connector and Hitch Guidance ¹ |
| Transmission – heavy-duty 6-speed automatic |
| EXTERIOR |
| BedSteps – integrated on forward portion of bed on driver and passenger side |
| Bumper – rear CornerSteps |
| Cargo area lighting – integrated with center high-mounted stop lamp |
| Daytime running lamps – automatic on/off with automatic delay |
| Fuel filler – capless fueling (gas engine only) |
| Pickup bed – Durabed |
| Tailgate and bed rail – protection cap |
| Tie-downs – 12 fixed cargo tie-downs, rated at 500 lbs ² per corner |
| Tire – carrier lock |
| Tire – full-size spare |

| INTERIOR |
|---|
| Air conditioning |
| Air vents – rear, heating/cooling (Double Cab and Crew Cab) |
| Airbags ³ – dual-stage frontal airbags for driver and front outboard passenger; seat-mounted side-impact airbags for driver and front outboard passenger; head-curtain airbags for front and rear outboard seating positions; includes front outboard Passenger Sensing System for frontal outboard passenger airbag |
| Assist handles – driver and front passenger, A-pillar; rear passenger, B-pillar |
| Connectivity – Bluetooth® phone connectivity and wireless audio streaming ⁴ |
| Display – outside temperature, located in infotainment display |
| Door locks – manual (Regular Cab); power programmable with lockout protection and manual rear door child security (Double Cab and Crew Cab) |
| Instrument cluster – 6-gauge with speedometer, fuel level, engine temperature, tachometer, voltage and oil pressure |
| Media – two USB ports ⁵ on instrument panel |
| Power outlet – 12-volt auxiliary, front |
| Rear Seat Reminder ⁶ (Double Cab and Crew Cab) |
| Teen Driver technology ¹ |
| Tire Pressure Monitoring System – with Tire Fill Alert (does not apply to spare tire) |

¹ Safety or driver assistance features are no substitute for the driver's responsibility to operate the vehicle in a safe manner. Read the vehicle Owner's Manual for important feature limitations and information. ² These maximum payload ratings are intended for comparison purposes only. Before you buy a vehicle or use it to haul people or cargo, carefully review the Vehicle Loading section of the Owner's Manual and check the carrying capacity of your specific vehicle on the label on the inside of the driver door jamb. ³ A NOTE ON CHILD SAFETY: Always use seat belts and the correct child restraint for your child's age and size, even with airbags. Even in vehicles equipped with the Passenger Sensing System, children are safer when properly secured in a rear seat in the appropriate infant, child or booster seat. Never place a rear-facing infant restraint in the front seat of any vehicle equipped with an active frontal airbag. See your vehicle Owner's Manual and the child safety seat instructions for more safety information. ⁴ Go to my.chevrolet.com/learnAbout/bluetooth to find out which phones are compatible with the vehicle. Full Bluetooth feature functionality varies by device, model and software version. ⁵ Not compatible with all devices. ⁶ Does not detect people or items. Always check rear seat before exiting.

● STANDARD ○ AVAILABLE – NOT AVAILABLE

| | WT | CUSTOM | LT | LTZ | HIGH COUNTRY |
|---|----|--------|----|-----|--------------|
| SAFETY AND DRIVER ASSISTANCE | | | | | |
| Airbags ¹ – dual-stage frontal airbags for driver and front outboard passenger; seat-mounted side-impact airbags for driver and front outboard passenger; head-curtain airbags for front and rear outboard seating positions; includes front outboard Passenger Sensing System for frontal outboard passenger airbag | ● | ● | ● | ● | ● |
| Automatic Emergency Braking ² (WT and Custom require available Safety Confidence Package; LTZ and High Country require available Safety Package II) | ○ | ○ | – | ○ | ○ |
| Following Distance Indicator ² (requires available Safety Package II) | – | – | – | ○ | ○ |
| Forward Collision Alert ² (WT and Custom require available Safety Confidence Package; LTZ and High Country require available Safety Package II) | ○ | ○ | – | ○ | ○ |
| Front and Rear Park Assist ² – ultrasonic (WT requires available WT Safety Package; LT and LTZ require available Safety Package) | ○ | – | ○ | ○ | ● |
| Lane Change Alert with Side Blind Zone Alert ² (WT requires available WT Safety Package; LT and LTZ require available Safety Package) | ○ | – | ○ | ○ | ● |
| Lane Departure Warning ² (requires available Safety Package II) | – | – | – | ○ | ○ |
| Rear Cross Traffic Alert ² (WT requires available WT Safety Package; LT and LTZ require available Safety Package) | ○ | – | ○ | ○ | ● |
| Rear Vision Camera ² | ● | ● | ● | – | – |
| HD Rear Vision Camera ² (LT requires available Convenience Package II or Advanced Trailing Package) | – | – | ○ | ● | ● |
| HD Surround Vision ² – with two trailer camera provisions, includes HD Rear Vision Camera ² (LTZ requires available LTZ Convenience Package II) | – | – | – | ○ | ● |
| Safety Alert Seat ² (LTZ requires available Safety Package II or Carhartt® Edition; High Country requires available Safety Package II) | – | – | – | ○ | ○ |
| Teen Driver technology ² | ● | ● | ● | ● | ● |
| Theft-deterrent system – unauthorized entry (LT requires available Convenience Package) | – | – | ○ | ● | ● |
| Tire Pressure Monitoring System – with Tire Fill Alert (does not monitor spare tire) | ● | ● | ● | ● | ● |
| Up to 3 months of OnStar® Safety & Security coverage ³ (WT requires available SiriusXM® ⁴ ; Custom requires available Infotainment Package) | ○ | ○ | ● | ● | ● |

| | WT | CUSTOM | LT | LTZ | HIGH COUNTRY |
|---|----|--------|----|-----|--------------|
| MECHANICAL | | | | | |
| Advanced Trailing System – includes trailering checklist, trailer maintenance reminders, trailer security alerts, trailer mileage, Tow/Haul mode reminder and trailer electrical diagnostics (LT requires available Convenience Package II or Advanced Trailering Package) | – | – | ○ | ● | ● |
| Air filter – heavy-duty with air filtration monitoring | ● | ● | ● | ● | ● |
| Alternator – 170 amps, included with 6.6L V8 gas engine | ● | ● | ● | ● | ● |
| – 220 amps, included with available Duramax 6.6L Turbo-Diesel V8 engine; available with 6.6L V8 gas engine | ○ | ○ | ○ | ○ | ○ |
| – dual, 220-amp primary and 170-amp auxiliary (requires available auxiliary battery with 6.6L V8 gas engine) | ○ | ○ | ○ | ○ | ○ |
| Battery – heavy-duty (requires 6.6L V8 gas engine) | ● | ● | ● | ● | ● |
| – dual, heavy-duty (requires available Duramax 6.6L Turbo-Diesel V8 engine) | ○ | ○ | ○ | ○ | ○ |
| – auxiliary (requires 6.6L V8 gas engine with available 220-amp alternator or dual alternators) | ○ | ○ | ○ | ○ | ○ |
| Brakes – 4-wheel antilock disc with Duralife brake rotors and brake lining wear indicator | ● | ● | ● | ● | ● |
| Cooling – external engine and transmission oil coolers | ● | ● | ● | ● | ● |
| Differential – automatic locking rear | ● | ● | ● | ● | ● |
| Engine – 6.6L V8 gas with Variable Valve Timing (VVT) and Direct Injection; 401 hp @ 5200 rpm, 464 lb.-ft. of torque @ 4000 rpm | ● | ● | ● | ● | ● |
| – Duramax 6.6L Turbo-Diesel V8 (B20 biodiesel-compatible); 445 hp @ 2800 rpm, 910 lb.-ft. of torque @ 1600 rpm; includes exhaust brake, engine block heater, winter grille cover and capped fuel filler (WT requires available integrated trailer brake controller; Regular Cab WT requires available WT Convenience Package; Custom requires available Custom Value Package) | ○ | ○ | ○ | ○ | ○ |
| Exhaust – polished tip (6.6L V8 gas engine) | – | – | – | – | ● |
| Frame – fully boxed frame with hydroformed front section | ● | ● | ● | ● | ● |
| High idle switch (not available with Power Take-Off; WT requires available cruise control) | ○ | ○ | ○ | ○ | ○ |
| Hill Descent Control (requires available Z71 Off-Road Package) | ○ | – | ○ | ○ | ○ |
| Hitch Guidance ² | ● | ● | ● | ● | ● |
| Hitch View ² (LT requires available Advanced Trailering Package or Convenience Package II) | – | – | ○ | ● | ● |

Return To Models

1 A NOTE ON CHILD SAFETY: Always use seat belts and the correct child restraint for your child's age and size, even with airbags. Even in vehicles equipped with the Passenger Sensing System, children are safer when properly secured in a rear seat in the appropriate infant, child or booster seat. Never place a rear-facing infant restraint in the front seat of any vehicle equipped with an active frontal airbag. See your vehicle Owner's Manual and the child safety seat instructions for more safety information.

2 Safety or driver assistance features are no substitute for the driver's responsibility to operate the vehicle in a safe manner. Read the vehicle Owner's Manual for important feature limitations and information. **3** When you select a monthly plan within 15 days of activating your 1-month trial, you'll receive the next 2 months of the plan you select at no additional charge when you associate an approved payment method on file to your account and authorize recurring payments for your service plan. The amount and frequency of each recurring payment is based upon the service(s) and payment interval(s) you select from the options provided. After the trial expires, OnStar will automatically bill your payment method monthly at then-current standard monthly rates. Plans containing 4G LTE data will be billed every 30 days by AT&T. You may cancel at any time by pushing your blue OnStar button or calling 1-888-466-7827. May not be combined with other offers or retroactively applied. Offer subject to change. **4** If you decide to continue service after your trial, your selected subscription plan will automatically renew thereafter. You will be charged at then-current rates. Fees and taxes apply. To cancel you must call SiriusXM at 1-866-635-2349. See SiriusXM Customer Agreement for complete terms at siriusxm.com. All fees and programming subject to change.

● STANDARD ○ AVAILABLE – NOT AVAILABLE

| | WT | CUSTOM | LT | LTZ | HIGH COUNTRY |
|--|--------|--------|--------|--------|--------------|
| MECHANICAL (CONTINUED) | | | | | |
| Power Take-Off (WT requires available cruise control and Duramax 6.6L Turbo-Diesel V8 engine; Custom and LT require available Duramax 6.6L Turbo-Diesel V8 engine) | ○ | ○ | ○ | – | – |
| Skid plates – oil pan, front axle and transfer case (2500 HD and 3500 HD High Country SRW require available Z71 Off-Road Package or Snow Plow Prep/Camper Package) | ○ | ○ | ○ | ○ | ○ |
| StabiliTrak – Electronic Stability Control System and Traction Control; includes Electronic Trailer Sway Control and Hill Start Assist | ● | ● | ● | ● | ● |
| Steering – recirculating ball with smart flow power steering system – Digital Variable Steering Assist | ● – | ● – | ● – | – ● | – ● |
| Trailer brake controller – integrated (Regular Cab WT requires available WT Convenience Package; Custom requires available Custom Convenience Package, Custom Value Package or Gooseneck/5th Wheel Package) | ○ | ○ | ● | ● | ● |
| Trailer Tire Pressure Monitor Sensors – set of four (LT requires available Convenience Package II or Advanced Trailering Package) | – | – | ○ | ○ | ○ |
| Trailer wiring provisions – for trailering with gooseneck or 5th-wheel trailer, includes additional 7-way wiring harness at the rear of the pickup bed | ○ | ○ | ○ | ○ | ○ |
| Trailering Information Label – provides maximum trailer ratings for tongue weight and conventional, gooseneck and 5th-wheel trailering | ● | ● | ● | ● | ● |
| Trailering Package – trailer hitch with 2.5-inch receiver and 2-inch insert, 7-pin wiring connector and Hitch Guidance ¹ | ● | ● | ● | ● | ● |
| Transfer case – 2-speed, electronic with push-button controls (4x4 models) – 2-speed, electronic active Autotrac with push-button controls (4x4 models) | ● – | ● – | ● ○ | – ● | – ● |
| Transmission – heavy-duty 6-speed automatic – Allison® 10-speed automatic (requires available Duramax 6.6L Turbo-Diesel V8 engine) | ● ○ | ● ○ | ● ○ | ● ○ | ● ○ |

| | WT | CUSTOM | LT | LTZ | HIGH COUNTRY |
|--|--------|--------|--------|--------|--------------|
| EXTERIOR | | | | | |
| Assist steps – chrome, 6-inch rectangular (Crew Cab) | – | – | ○ | ○ | ● |
| – Black, power-retractable with foot-activated rearward articulation to provide bed access (requires available Z71 Sport Edition, Midnight Edition or Carhartt® Edition) | – | – | – | ○ | – |
| – bright trim, power-retractable with foot-activated rearward articulation to provide bed access (LTZ requires available Z71 Chrome Sport Edition) | – | – | – | ○ | ○ |
| Bedliner – Chevytec spray-on; includes Chevrolet bowtie logo on LT and LTZ; includes High Country logo on High Country (bed only; tailgate has composite inner panel) | ○ | ○ | ○ | ○ | ● |
| BedSteps – integrated on forward portion of bed on driver and passenger side | ● | ● | ● | ● | ● |
| Bumper – rear CornerSteps | ● | ● | ● | ● | ● |
| Bumpers – Black, front and rear – high-gloss Black, front and rear (LT and LTZ require available Midnight Edition) | ● – | – ● | – ○ | – ○ | – – |
| – chrome, front and rear | ○ | – | ● | ● | – |
| – body-color, front and rear (LT requires available Z71 Chrome Sport Edition or Z71 Sport Edition; LTZ requires available Carhartt Edition, Z71 Chrome Sport Edition or Z71 Sport Edition) | – | – | ○ | ○ | ● |
| Cargo area lighting – integrated with center high-mounted stop lamp – LED pickup bed, activated with switch on instrument panel center switch bank or key fob | ● ○ | ● ○ | ● ○ | ● ○ | ● ● |
| Daytime running lamps – automatic on/off with automatic delay | ● | ● | ● | ● | ● |
| Door handles – Black, grained – high-gloss Black (requires available Midnight Edition or Z71 Sport Edition) | ● – | ● – | – – | – ○ | – – |
| – body-color (LTZ requires available Carhartt Edition) | – | – | ● | ○ | – |
| – chrome (LT requires available Z71 Chrome Sport Edition) | – | – | ○ | ● | ● |
| Fog lamps – LED (LT requires available Convenience Package) | – | – | ○ | ● | ● |
| Fuel filler – capless fueling (6.6L V8 gas engine) | ● | ● | ● | ● | ● |
| Glass – solar-absorbing tinted – deep-tinted behind front doors (Double Cab and Crew Cab) | ● ○ | – ● | – ● | – ● | – ● |

Return To Models

¹ Safety or driver assistance features are no substitute for the driver's responsibility to operate the vehicle in a safe manner. Read the vehicle Owner's Manual for important feature limitations and information.

● STANDARD ○ AVAILABLE – NOT AVAILABLE

| | WT | CUSTOM | LT | LTZ | HIGH COUNTRY |
|--|----|--------|----|-----|--------------|
| EXTERIOR (CONTINUED) | | | | | |
| Grille – Chevrolet lettered grille, Black front grille bar and Black mesh grille inserts with small Gold bowtie emblem | ● | – | – | – | – |
| – Chevrolet lettered grille, body-color front grille bar, body-color grille surround and Black mesh grille inserts with small Gold bowtie emblem | – | ● | – | – | – |
| – Chevrolet lettered grille, chrome front grille bar and Black mesh grille inserts with small Gold bowtie emblem | – | – | ● | – | – |
| – Chevrolet lettered grille, chrome front grille bar and chrome grille inserts with small Gold bowtie emblem | – | – | – | ● | – |
| – chrome front grille bar with Gold bowtie emblem and chrome grille inserts with Bronze accents | – | – | – | – | ● |
| Headlamps – halogen reflector | ● | ● | ● | – | – |
| – high-intensity LED reflector with LED signature curtain daytime running lamps (LT requires available Midnight Edition, Z71 Chrome Sport Edition or Z71 Sport Edition) | – | – | ○ | ● | ● |
| IntelliBeam® – automatic high beam on/off (requires available Safety Package II) | – | – | – | ○ | ○ |
| Mirror caps – Black | ● | ● | ● | – | – |
| – high-gloss Black (requires available Midnight Edition or Z71 Sport Edition) | – | – | ○ | ○ | – |
| – chrome (LT requires available Z71 Chrome Sport Edition) | – | – | ○ | ● | ● |
| – body-color (requires available Carhartt® Edition) | – | – | – | ○ | – |
| Mirrors – vertical trailering, manual-adjustable, manual-folding and manual-extending with lower convex mirrors | ● | – | – | – | – |
| – vertical trailering, heated upper glass, power-adjustable, manual-folding and manual-extending with lower convex mirrors and integrated turn signal indicators (WT requires available WT Convenience Package) | ○ | ● | ● | – | – |
| – vertical trailering, heated upper glass, auto-dimming upper glass, power-adjustable, manual-folding and manual-extending with lower convex mirrors and integrated turn signal indicators, puddle lamps, perimeter lighting and auxiliary lighting; includes interior auto-dimming rearview mirror (WT requires available WT Convenience Package; Custom requires available Custom Convenience Package; LT requires available Convenience Package or Advanced Trailering Package) | ○ | ○ | ○ | – | – |
| – vertical trailering, heated and auto-dimming upper glass (driver and passenger), power-adjustable, power-folding and power-extending with lower convex mirrors, integrated turn signal indicators, puddle lamps, perimeter lighting and auxiliary lighting | – | – | – | ● | ● |
| – heated, power-adjustable, manual-folding, non-extending; passenger mirror has flat glass (WT requires available WT Convenience Package; 3500 HD LT requires SRW) | ○ | – | ○ | – | – |
| Moldings – Black window beltline (LTZ requires available Midnight Edition, Z71 Sport Edition or Carhartt Edition) | ● | ● | ● | ○ | – |
| – stainless steel window beltline (LT requires available Z71 Chrome Sport Edition) | – | – | ○ | ● | ● |

| | WT | CUSTOM | LT | LTZ | HIGH COUNTRY |
|--|----|--------|----|-----|--------------|
| EXTERIOR (CONTINUED) | | | | | |
| Pickup bed – Durabed | ● | ● | ● | ● | ● |
| Power outlets – 120-volt (400 watts shared), bed-mounted and instrument panel-mounted (WT requires available WT Convenience Package; Custom requires available Custom Convenience Package; LT requires available Convenience Package II) | ○ | ○ | ○ | ● | ● |
| Recovery hooks¹ – Black | ● | ● | ● | ● | – |
| – chrome | – | ○ | ○ | ○ | ● |
| Roof marker lamps – LED amber (standard on 3500 HD DRW models; 2500 HD WT not available with 2WD; Custom not available on Extended Cab)² | ○ | ○ | ○ | ○ | ○ |
| Tailgate – manual lift | ● | ● | – | – | – |
| – EZ Lift, power lock and release (WT requires available WT Convenience Package; Custom requires available Custom Convenience Package; High Country requires available Multi-Flex Tailgate) | ○ | ○ | ● | ● | ○ |
| – power-up/-down with power lock and release (LT requires available Convenience Package II; LTZ requires available LTZ Convenience Package) | – | – | ○ | ○ | ● |
| – Multi-Flex, with six functional load/access features (WT requires available WT Convenience Package; Custom requires available Custom Convenience Package; LT requires available Convenience Package II; LTZ requires available LTZ Convenience Package and EZ Lift power lock and release tailgate; High Country requires available EZ Lift power lock and release tailgate) | ○ | ○ | ○ | ○ | ○ |
| Tailgate and bed rail – protection cap | ● | ● | ● | ● | ● |
| Taillamps – incandescent | ● | ● | ● | – | – |
| – LED | – | – | – | ● | ● |
| Tie-downs – 12 fixed cargo tie-downs, rated at 500 lbs³ per corner | ● | ● | ● | ● | ● |
| Tire – carrier lock | ● | ● | ● | ● | ● |
| – full-size spare | ● | ● | ● | ● | ● |
| Tires – LT245/75R17E all-season (2500 HD) | ● | – | ● | – | – |
| – LT265/70R17E all-terrain (2500 HD) | ○ | – | ○ | – | – |
| – LT275/70R18E all-terrain (2500 HD) | ○ | – | ○ | ● | – |
| – LT275/70R18 mud-terrain (2500 HD 4x4 models) (WT requires available Alaskan Snow Plow Special Edition; LT requires available Alaskan Snow Plow Special Edition, Midnight Edition or Z71 Sport Edition; LTZ requires available Midnight Edition or Z71 Sport Edition) | ○ | – | ○ | ○ | – |
| – LT275/65R20 all-terrain (2500 HD and 3500 HD High Country SRW; LT and LTZ require available 20" wheels) | – | ● | ○ | ○ | ● |
| – LT235/80R17E all-season highway (3500 HD DRW) | ● | – | ● | ● | ● |
| – LT235/80R17E all-terrain (3500 HD DRW) | ○ | – | ○ | ○ | ○ |
| – LT275/70R18E all-terrain (3500 HD SRW) | ● | – | ● | ● | – |
| Wheelhouse liners – rear (LT requires available Convenience Package) | – | – | ○ | ● | ● |

1 To avoid the risk of injury, never use recovery hooks to tow a vehicle. For more information, see the Recovery Hooks section of your Owner's Manual. 2 Restriction applies in California on 2500 HD and 3500 HD SRW models. See dealer for more information.

3 These maximum payload ratings are intended for comparison purposes only. Before you buy a vehicle or use it to haul people or cargo, carefully review the Vehicle Loading section of the Owner's Manual and check the carrying capacity of your specific vehicle on the label on the inside of the driver door jamb.

● STANDARD ○ AVAILABLE – NOT AVAILABLE

| | WT | CUSTOM | LT | LTZ | HIGH COUNTRY |
|---|----|--------|----|-----|--------------|
| INTERIOR | | | | | |
| Air conditioning – single-zone | ● | ● | ● | – | – |
| – automatic, dual-zone (LT requires available Convenience Package) | – | – | ○ | ● | ● |
| Air vents – rear, heating/cooling (Double Cab and Crew Cab) | ● | ● | ● | ● | ● |
| Assist handles – driver and front passenger, A-pillar; rear passenger, B-pillar | ● | ● | ● | ● | ● |
| Bed View Camera ¹ – integrated with center high-mounted stop lamp; display located in auto-dimming rearview mirror (WT and Custom not available with Rear Camera Mirror; ¹ LT not available with Advanced Trailering Package, Bed View Camera ¹ with two trailer camera provisions, Convenience Package II or Rear Camera Mirror; ¹ LT requires standard Chevrolet Infotainment System ²) (Double Cab and Crew Cab) | ○ | ○ | ○ | – | – |
| – Bed View Camera ² includes two trailer camera provisions; display located in Chevrolet Infotainment System ² screen (LT requires available Convenience Package II or Advanced Trailering Package; LTZ requires available LTZ Convenience Package II or Gooseneck/5th Wheel Package) (Double Cab and Crew Cab) | – | – | ○ | ○ | ● |
| Center console – floor-mounted, with cup holders, cell phone storage, power cord management and hanging file holder capability (LT requires available front bucket seats; LTZ requires available LTZ Convenience Package) | – | – | ○ | ○ | ● |
| Compass – display in instrument cluster (WT and Custom require available OnStar ^{®3}) | ○ | ○ | ● | ● | ● |
| Cruise control – electronic with Set and Resume Speed, steering wheel-mounted | ○ | ● | ● | ● | ● |
| Defogger – rear-window (Custom requires available Custom Convenience Package) | ○ | ○ | ○ | ● | ● |
| Door locks – manual (Regular Cab) | ● | – | – | – | – |
| – power programmable with lockout protection and manual rear door child security (standard on Double Cab and Crew Cab WT; Regular Cab WT requires available WT Convenience Package) | ○ | ● | ● | ● | ● |
| Driver Information Center – 3.5-inch diagonal monochromatic display | ● | ● | – | – | – |
| – 4.2-inch diagonal color display and driver personalization (WT and Custom require available Safety Confidence Package) | ○ | ○ | ● | ● | – |
| – enhanced 8-inch diagonal multi-color configurable display, includes analog speedometer and tachometer (LTZ requires available Technology Package) | – | – | – | ○ | ● |

| | WT | CUSTOM | LT | LTZ | HIGH COUNTRY |
|--|----|--------|----|-----|--------------|
| INTERIOR (CONTINUED) | | | | | |
| Floor covering – rubberized-vinyl | ● | – | ○ | – | – |
| – color-keyed carpeting | ○ | ● | ● | ● | ● |
| Floor liners – front and rear, with removable carpet inserts (not available on Regular Cab; requires available Chevytec spray-on bedliner with Chevrolet bowtie logo on LT and LTZ) | – | – | ○ | ○ | ○ |
| Floor mats – front and rear, vinyl (WT requires available color-keyed carpeting) | ○ | ● | ● | ● | – |
| – front and rear, carpeted | – | – | – | – | ● |
| Head-Up Display – 15-inch diagonal multi-color (requires available Technology Package) | – | – | – | ○ | ○ |
| Instrument cluster – 6-gauge with speedometer, fuel level, engine temperature, tachometer, voltage and oil pressure | ● | ● | ● | ● | ● |
| Keyless Open and Start (LT requires available Convenience Package) | – | – | ○ | ● | ● |
| Memory settings – recalls two presets for power driver seat and exterior mirrors | – | – | – | ● | ● |
| Mirror – rearview, manual day/night | ● | ● | ● | – | – |
| – rearview, auto-dimming (WT, Custom and LT require available outside power-adjustable, manual-folding and manual-extending vertical trailering mirrors with heated upper glass, auto-dimming upper glass, lower convex mirrors, integrated turn signal indicators, puddle lamps, perimeter lighting and auxiliary lighting) | ○ | ○ | ○ | ● | ● |
| – rearview, auto-dimming with partial video display of cargo bed (requires available Bed View Camera ¹) (Double Cab and Crew Cab) | ○ | ○ | ○ | – | – |
| – Rear Camera Mirror ¹ (WT requires available WT Convenience Package; Custom requires available Custom Convenience Package; LT requires available Convenience Package or Advanced Trailering Package; LTZ and High Country require available Technology Package) | ○ | ○ | ○ | ○ | ○ |
| Power outlets – front auxiliary, 12-volt | ● | ● | ● | ● | ● |
| – rear auxiliary, 12-volt (LT requires available Convenience Package) | – | – | ○ | ● | ● |
| – 120-volt (400 watts shared), instrument panel- and bed-mounted (WT requires available WT Convenience Package; Custom requires available Custom Convenience Package; LT requires available Convenience Package II) | ○ | ○ | ○ | ● | ● |
| Rear Seat Reminder ⁴ (Double Cab and Crew Cab) | ● | ● | ● | ● | ● |
| Remote Keyless Entry (WT requires available WT Convenience Package) | ○ | ● | ● | – | – |

¹ Safety or driver assistance features are no substitute for the driver's responsibility to operate the vehicle in a safe manner. Read the vehicle Owner's Manual for important feature limitations and information. ² Chevrolet Infotainment System functionality varies by model. Full functionality requires compatible Bluetooth and smartphone, and USB connectivity for some devices. ³ When you select a monthly plan within 15 days of activating your 1-month trial, you'll receive the next 2 months of the plan you select at no additional charge when you associate an approved payment method on file to your account and authorize recurring payments for your service plan. The amount and frequency of each recurring payment is based upon the service(s) and payment interval(s) you select from the options provided. After the trial expires, OnStar will automatically bill your payment method monthly at then-current standard monthly rates. Plans containing 4G LTE data will be billed every 30 days by AT&T. You may cancel at any time by pushing your blue OnStar button or calling 1-888-466-7827. May not be combined with other offers or retroactively applied. Offer subject to change. ⁴ Does not detect people or items. Always check rear seat before exiting.

● STANDARD
 ○ AVAILABLE
 – NOT AVAILABLE

| | WT | CUSTOM | LT | LTZ | HIGH COUNTRY |
|--|----|--------|----|-----|--------------|
| INTERIOR (CONTINUED) | | | | | |
| Remote vehicle starter system (Custom requires available Custom Convenience Package; LT requires available Convenience Package or Remote Start Package) | – | ○ | ○ | ● | ● |
| Steering column – manual tilt-wheel | ● | ● | ● | – | – |
| – manual tilt/telescoping (LT requires available Convenience Package) | – | – | ○ | ● | ● |
| Steering wheel – mounted cruise control | ○ | ● | ● | ● | ● |
| – mounted audio and phone controls (WT and Custom require available Safety Confidence Package) | ○ | ○ | ● | ● | ● |
| – wrapped (LT requires available Convenience Package) | – | – | ● | ● | ● |
| – heated (LT requires available Convenience Package) | – | – | ○ | ○ | ● |
| Sunroof – power (Crew Cab) (LT requires available Convenience Package II; LTZ requires available LTZ Convenience Package) | – | – | ○ | ○ | ○ |
| Temperature display – outside | ● | ● | ● | ● | ● |
| Universal Home Remote – programmable, includes garage door opener (LT requires available Convenience Package II; LTZ requires available LTZ Convenience Package) | – | – | ○ | ○ | ● |
| Upfitter switches – five 30-amp circuits for installation of aftermarket accessories ¹ | ○ | ○ | ○ | ○ | ○ |
| Window – power-sliding rear with defogger (LT requires available Convenience Package II; LTZ requires available LTZ Convenience Package) | – | – | ○ | ○ | ● |
| Windows – manual (Regular Cab) | ● | – | – | – | – |
| – power with driver express-up/-down, all others express-down (standard on Double Cab and Crew Cab; Regular Cab WT requires available WT Convenience Package) | ○ | ● | ● | – | – |
| – power with driver and front passenger express-up/-down, rear express-down | – | – | – | ● | ● |

| | WT | CUSTOM | LT | LTZ | HIGH COUNTRY |
|---|----|--------|----|-----|--------------|
| SEATING | | | | | |
| Seats – front 40/20/40 split-bench, includes covered storage armrest | ● | ● | ● | – | – |
| – front 40/20/40 split-bench, includes covered storage armrest and lockable underseat storage (standard on Regular Cab LT; Double Cab and Crew Cab LT require available Convenience Package) | – | – | ○ | ● | – |
| – front bucket seats with center floor console (Double Cab and Crew Cab) (LT requires available Convenience Package; LTZ requires available LTZ Convenience Package, LTZ Plus Package, LTZ Premium Package, LTZ Texas Edition or LTZ Premium Texas Edition) | – | – | ○ | ○ | ● |
| – rear 60/40 folding bench (Double Cab and Crew Cab on WT, Custom and LT; Double Cab on LTZ) | ● | ● | ● | ● | – |
| – rear 60/40 folding bench with seatback storage on left and right side and center foldout armrest with two cup holders (Crew Cab) | – | ○ | ○ | – | – |
| – rear 60/40 folding bench with seatback storage on left and right side and center foldout armrest with two cup holders and full cab width underseat storage (LT requires available Leather Package) (Crew Cab) | – | – | ○ | ● | ● |
| Seat – driver and front passenger 4-way manual adjusters | ● | ● | ● | – | – |
| – driver 10-way power adjuster with power lumbar control (Custom requires available Custom Convenience Package and instrument panel- and bed-mounted 120-volt outlets; LT requires available Convenience Package) | – | ○ | ○ | ● | ● |
| – front passenger 10-way power adjuster with power lumbar control | – | – | – | ● | ● |
| Heated driver and front outboard passenger seats (LT requires available Convenience Package) | – | – | ○ | ○ | ● |
| Heated rear outboard passenger seats (Crew Cab) (LTZ requires available LTZ Convenience Package) | – | – | – | ○ | ● |
| Ventilated driver and front passenger seats (LTZ requires available LTZ Convenience Package) | – | – | – | ○ | ● |

¹ Equipment from independent suppliers is not covered by the GM New Vehicle Limited Warranty. GM is not responsible for the safety or quality of independent supplier alterations.

● STANDARD
 ○ AVAILABLE
 – NOT AVAILABLE

| | WT | CUSTOM | LT | LTZ | HIGH COUNTRY |
|--|----|--------|----|-----|--------------|
| ENTERTAINMENT | | | | | |
| Audio – 2-speaker system (Regular Cab) | ● | – | ● | – | – |
| – 6-speaker system (Double Cab and Crew Cab) | ● | ● | ● | ● | – |
| – 7-speaker Bose premium audio system with Richbass subwoofer (LTZ requires available LTZ Convenience Package II) | – | – | – | ○ | ● |
| Chevrolet Infotainment 3 system ¹ with 7-inch diagonal color touch-screen, AM/FM stereo, Bluetooth® audio streaming ² for two active devices, voice command pass-through to compatible phone, and Apple CarPlay ^{®3} and Android Auto ^{™4} compatibility | ● | ● | – | – | – |
| Chevrolet Infotainment 3 system ¹ with 8-inch diagonal color touch-screen, AM/FM stereo, Bluetooth audio streaming ² for two active devices, voice command pass-through to compatible phone, and Apple CarPlay ³ and Android Auto ⁴ compatibility | – | – | ● | – | – |
| Chevrolet Infotainment 3 Plus system ¹ with 8-inch diagonal HD color touch-screen, AM/FM stereo, Bluetooth audio streaming ² for two active devices, voice command pass-through to compatible phone, wireless Apple CarPlay ³ and wireless Android Auto ⁴ compatibility, available Alexa Built-in ⁵ ; voice recognition, available In-Vehicle Apps ⁶ and Chevrolet Maps+ ⁷ (LT requires available Convenience Package II or Advanced Trailerling Package) | – | – | ○ | ● | – |
| Chevrolet Infotainment 3 Premium system ¹ with Navigation ⁸ and 8-inch diagonal HD color touch-screen, AM/FM stereo, Bluetooth audio streaming ² for two active devices, voice command pass-through to compatible phone, wireless Apple CarPlay ³ and wireless Android Auto ⁴ compatibility, available Alexa Built-in ⁵ ; Enhanced voice recognition, additional memory for available In-Vehicle Apps ⁶ ; available Connected Navigation ⁹ and Chevrolet Map+ ⁷ (LTZ requires available LTZ Convenience Package II) | – | – | – | ○ | ● |

| | WT | CUSTOM | LT | LTZ | HIGH COUNTRY |
|---|----|--------|----|-----|--------------|
| ENTERTAINMENT (CONTINUED) | | | | | |
| Media – two USB ports ¹⁰ on instrument panel | ● | ● | ● | ● | ● |
| – SD card reader on instrument panel (LT requires available Convenience Package II or Advanced Trailerling Package) | – | – | ○ | ● | – |
| – two USB ports, ¹⁰ SD card reader and auxiliary input jack inside front center floor console (LT requires available bucket seats; LTZ requires available LTZ Convenience Package) | – | – | ○ | ○ | ● |
| – two USB ports, ¹⁰ rear, charge-only (LT requires available Convenience Package) | – | – | ○ | ● | ● |
| SiriusXM ^{®11} – 3-month trial subscription to SXM Platinum Plan (WT requires available OnStar ^{®12} ; Custom requires available Infotainment Package) | ○ | ○ | ● | – | – |
| SiriusXM with 360L ^{11,13} – 3-month trial subscription to SXM Platinum Plan (LT requires available Convenience Package II or Advanced Trailerling Package) | – | – | ○ | ● | ● |
| Available Wi-Fi [®] Hotspot ¹⁴ for up to seven devices, includes 1-month Unlimited Data Plan (WT and Custom require available OnStar ¹²) | ○ | ○ | ○ | ○ | ○ |
| Chevrolet Connected Access ¹⁵ with up to 10 years of standard connectivity, which currently enables features such as Vehicle Diagnostics and Dealer Maintenance Notification (WT and Custom require available OnStar ¹²) | ○ | ○ | ● | ● | ● |
| Wireless charging ¹⁶ (LTZ requires available LTZ Convenience Package II) | – | – | – | ○ | ● |

¹ Chevrolet Infotainment System functionality varies by model. Full functionality requires compatible Bluetooth and smartphone, and USB connectivity for some devices. ² Go to my.chevrolet.com/learnAbout/bluetooth to find out which phones are compatible with the vehicle. Full Bluetooth feature functionality varies by device, model and software version. ³ Vehicle user interface is a product of Apple and its terms and privacy statements apply. Requires compatible iPhone and data plan rates apply. ⁴ Vehicle user interface is a product of Google and its terms and privacy statements apply. To use Android Auto on your car display, you'll need an Android phone running Android 6 or higher, an active data plan, and the Android Auto app. ⁵ Functionality is subject to limitations and varies by vehicle, infotainment system and location. Select service plan required. Certain Alexa Skills require account linking to use. Visit onstar.com for additional details. ⁶ Third-party trademarks are the property of their respective third-party owners and used under agreement. Requires active service plan and paid AT&T vehicle data plan. Visit onstar.com for details and limitations. ⁷ U.S. only. Requires select service plan. Functionality is subject to user terms and limitations and varies by vehicle model. Visit onstar.com for details and limitations. ⁸ Map coverage available in the United States, Puerto Rico and Canada. ⁹ Connected Navigation and Real-time Points of Interest (POI) only available on properly equipped vehicles. Requires paid plan or trial. Map coverage available in the United States, Puerto Rico and Canada. Visit onstar.com for details and limitations. ¹⁰ Not compatible with all devices. ¹¹ If you decide to continue service after your trial, your selected subscription plan will automatically renew thereafter. You will be charged at then-current rates. Fees and taxes apply. To cancel you must call SiriusXM at 1-866-635-2349. See SiriusXM Customer Agreement for complete terms at siriusxm.com. All fees and programming subject to change. ¹² When you select a monthly plan within 15 days of activating your 1-month trial, you'll receive the next 2 months of the plan you select at no additional charge when you associate an approved payment method on file to your account and authorize recurring payments for your service plan. The amount and frequency of each recurring payment is based upon the service(s) and payment interval(s) you select from the options provided. After the trial expires, OnStar will automatically bill your payment method monthly at then-current standard monthly rates. Plans containing 4G LTE data will be billed every 30 days by AT&T. You may cancel at any time by pushing your blue OnStar button or calling 1-888-466-7827. May not be combined with other offers or retroactively applied. Offer subject to change. ¹³ Certain features require a SiriusXM subscription and the Chevrolet Connected Access plan. See siriusxm.com and onstar.com for details and limitations. ¹⁴ Service varies with conditions and location. Requires active service and paid AT&T data plan. Visit onstar.com for details and limitations. Availability subject to change. ¹⁵ Standard connectivity available only to original purchaser for up to 10 years. Connected Access services are subject to change. Does not include emergency or security services. Diagnostic capabilities vary by model and service plan. Message and data rates may apply. Requires contact method on file and enrollment to receive alerts. Not all issues will deliver alerts. Visit onstar.com for details and limitations. ¹⁶ The system wirelessly charges one compatible mobile device. Some phones have built-in wireless charging technology and others require a special adaptor/back cover. To check for phone or other device compatibility, see my.chevrolet.com/learn or consult your carrier.

SPECIAL EDITIONS



Alaskan Snow Plow Special Edition!

● STANDARD ○ AVAILABLE – NOT AVAILABLE

| | WT | CUSTOM | LT | LTZ | HIGH COUNTRY |
|--|----|--------|----|-----|--------------|
| MECHANICAL | | | | | |
| Alaskan Snow Plow Special Edition (4x4 models) | ○ | – | ○ | – | – |
| Snow Plow Prep/Camper Package, 18" high-gloss Black aluminum wheels (PTW), roof marker lamps ² and Alaskan decal (replaces standard 4x4 bed-mounted decal); WT includes Chevytec spray-on bedliner; LT includes Chevytec spray-on bedliner with Chevrolet bowtie and rubberized-vinyl floor covering; 2500 HD WT and LT include LT275/70R18 mud-terrain tires | | | | | |
| Snow Plow Prep/Camper Package (4x4 models) | ○ | ○ | ○ | ○ | ○ |
| Power feed for roof emergency light, pass-through dash grommet, 220-amp alternator and skid plates and increased front GAWR (not available with Heavy-Duty Front Spring/Camper Package) (LTZ requires available Chevytec spray-on bedliner with Chevrolet bowtie logo; 3500 HD High Country SRW requires available Z71 Off-Road Package) | | | | | |

¹ Snow plow upfit from an independent supplier. Equipment from independent suppliers is not covered by the GM New Vehicle Limited Warranty. GM is not responsible for the safety or quality of independent supplier alterations. ² Restriction applies in California. See dealer for more information.

SPECIAL EDITIONS (CONTINUED)



Midnight Edition.



Carhartt Edition.

Return To Models

● STANDARD ○ AVAILABLE – NOT AVAILABLE

| | WT | CUSTOM | LT | LTZ | HIGH COUNTRY |
|---|----|--------|----|-----|--------------|
| EXTERIOR | | | | | |
| Midnight Edition (Crew Cab 4x4 models) | - | - | ○ | ○ | - |
| Black Chevrolet lettered grille bar, Black grille inserts, bowtie emblem and Z71 badge, Black skid plate, Black Silverado, trim level and tonnage badging, Black bowtie emblem on steering wheel, Black hood vent surround, high-gloss Black-painted mirror caps and front and rear bumpers, 18" high-gloss Black aluminum wheels (PTW), LT275/70R18 mud-terrain tires, Chevytec spray-on bedliner with Chevrolet bowtie logo and 4-inch round Black assist steps (dealer-installed); LT includes high-intensity LED reflector headlamps, outside power-adjustable, manual-folding and manual-extending vertical trailering mirrors with heated upper glass, auto-dimming upper glass, lower convex mirrors, integrated turn signal indicators, puddle lamps, perimeter lighting and auxiliary lighting and interior auto-dimming rearview mirror; LTZ includes Black window beltline moldings and painted door handles (not available with Z71 Off-Road and Protection Package, Z71 Chrome Sport Edition, Z71 Sport Edition, pickup bed delete, any chrome assist steps or any accessory wheels; LT not available with Alaskan Snow Plow Special Edition or Texas Edition; LTZ not available with LTZ Premium Package, LTZ Texas Edition or LTZ Premium Texas Edition) (requires Black exterior color and Jet Black interior color; 3500 HD requires SRW; LT requires available All Star Edition and Z71 Off-Road Package; LTZ requires available LTZ Plus Package and Z71 Off-Road Package) | | | | | |
| Carhartt® Edition (2500 HD Crew Cab 4x4) | - | - | - | ○ | - |
| Mosaic Black Metallic Chevrolet lettered grille bar, chrome grille inserts with Black Z71 badges, Black skid plate, Black beltline moldings, Black bowtie emblem on steering wheel, body-color mirror caps, door handles, and front and rear bumpers, Black hood vent surround, Carhartt badging on doors and tailgate, Carhartt exterior pinstriping, Carhartt interior trim (including stitching and seat panels), Carhartt embroidered head restraints, all-weather floor liners with Carhartt logo, soft roll-up tonneau cover with Carhartt logo, roof marker lamps, 20" 10-spoke machined-aluminum wheels with Grazen Metallic-painted accents (Q86), LT275/65R20 all-terrain tires, Black Chevytec spray-on bedliner with Chevrolet bowtie logo, Safety Alert Seat¹ and 4-inch round Black assist steps (dealer-installed) (when ordered for California roof marker lamps not included; not available with Midnight Edition, Z71 Off-Road and Protection Package, Z71 Chrome Sport Edition, Z71 Sport Edition, LTZ Premium Package, LTZ Texas Edition, LTZ Premium Texas Edition, pickup bed delete, any chrome assist steps or any accessory wheels) (requires available LTZ Plus Package, LTZ Convenience Package II, Safety Package II, Z71 Off-Road Package and Mosaic Black Metallic exterior color) | | | | | |

¹ Safety or driver assistance features are no substitute for the driver's responsibility to operate the vehicle in a safe manner. Read the vehicle Owner's Manual for important feature limitations and information.

SPECIAL EDITIONS (CONTINUED)



Z71 Chrome Sport Edition.



Z71 Sport Edition.

[Return To Models](#)

● STANDARD ○ AVAILABLE – NOT AVAILABLE

| | WT | CUSTOM | LT | LTZ | HIGH COUNTRY |
|--|----|--------|----|-----|--------------|
| EXTERIOR (CONTINUED) | | | | | |
| Z71 Chrome Sport Edition (Crew Cab 4x4 models) | - | - | ○ | ○ | - |
| Body-color Chevrolet lettered grille bar, Black mesh grille with chrome accents and Z71 badge, chrome skid plate, body-color front and rear bumpers, LT275/65R20 all-terrain tires and Chevytec spray-on bedliner with Chevrolet bowtie logo (available with Summit White or Black exterior colors; 3500 HD requires SRW); LT includes 20" 10-spoke machined-aluminum wheels with Grazen Metallic-painted accents (Q86), high-intensity LED reflector headlamps, outside power-adjustable, manual-folding and manual-extending vertical trailering mirrors with heated upper glass, auto-dimming upper glass, lower convex mirrors, integrated turn signal indicators, puddle lamps, perimeter lighting and auxiliary lighting, interior auto-dimming rearview mirror, stainless steel window beltline moldings, chrome door handles, mirror caps and hood vent, and 4-inch round chrome assist steps (dealer-installed); LTZ includes 20" 6-spoke polished-aluminum wheels (RTH) and 6-inch rectangular chrome assist steps (not available with Midnight Edition, Z71 Off-Road and Protection Package, Z71 Sport Edition, pickup bed delete, any other assist steps or any accessory wheels; LT not available with Alaskan Snow Plow Special Edition; LTZ not available with Carhartt® Edition, LTZ Premium Package or LTZ Premium Texas Edition) (LT requires available All Star Edition or Texas Edition and Z71 Off-Road Package; LTZ requires available LTZ Plus Package or LTZ Texas Edition and Z71 Off-Road Package) | | | | | |
| Z71 Sport Edition (Crew Cab 4x4 models) | - | - | ○ | ○ | - |
| Body-color Chevrolet lettered grille bar, Black grille inserts with Z71 badge, Black bowtie emblems, body-color front and rear bumpers, Black skid plate, Black Silverado, trim level and tonnage badging, Black bowtie emblem on steering wheel, Black hood vent surround, high-gloss Black-painted mirror caps and door handles, 18" high-gloss Black aluminum wheels (PTW), LT275/70R18 mud-terrain tires, Chevytec spray-on bedliner with Chevrolet bowtie logo and 4-inch round Black assist steps (dealer-installed) (available with Summit White, Red Hot or Northsky Blue Metallic exterior colors); LT includes high-intensity LED reflector headlamps and outside power-adjustable, manual-folding and manual-extending vertical trailering mirrors with heated upper glass, auto-dimming upper glass, lower convex mirrors, integrated turn signal indicators, puddle lamps, perimeter lighting and auxiliary lighting and interior auto-dimming rearview mirror; LTZ includes Black window beltline moldings (not available with Midnight Edition, Z71 Off-Road and Protection Package, Z71 Chrome Sport Edition, pickup bed delete, any chrome assist steps or any accessory wheels; LT not available with Alaskan Snow Plow Special Edition or Texas Edition; LTZ not available with Carhartt Edition, LTZ Premium Package, LTZ Texas Edition or LTZ Premium Texas Edition) (requires Jet Black interior color; 3500 HD requires SRW; LT requires available All Star Edition and Z71 Off-Road Package; LTZ requires available LTZ Plus Package and Z71 Off-Road Package) | | | | | |

AVAILABLE PACKAGES



Z71 Off-Road Package.

● STANDARD ○ AVAILABLE – NOT AVAILABLE

| | WT | CUSTOM | LT | LTZ | HIGH COUNTRY |
|---|----|--------|----|-----|--------------|
| MECHANICAL | | | | | |
| Advanced Trailerling Package | - | - | ○ | - | - |
| Hitch Guidance with Hitch View ¹ ; Advanced Trailerling System with Trailerling App ² ; Chevrolet Infotainment 3 Plus system ³ with 8-inch diagonal HD color touch-screen, SiriusXM [®] with 360L ⁴ 3-month trial subscription to SXM Platinum Plan and HD Rear Vision Camera ¹ | | | | | |
| Max Trailerling Package (3500 HD Regular Cab DRW 2WD) | ○ | - | - | - | - |
| Heavy-Duty Front Spring/Camper Package, 17" forged polished-aluminum wheels (RS7) and Gooseneck/5th Wheel Package; not available with pickup bed delete (requires available Duramax 6.6L Turbo-Diesel V8 engine, WT Convenience Package and integrated trailer brake controller; does not include Chevytec spray-on bedliner and pre-drilled hole covers) | | | | | |
| Gooseneck/5th Wheel Package | ○ | ○ | ○ | ○ | - |
| Gooseneck/5th Wheel Prep Package; WT and Custom include integrated trailer brake controller and Chevytec spray-on bedliner; LT includes Chevytec spray-on bedliner with Chevrolet bowtie logo; LTZ includes Chevytec spray-on bedliner with Chevrolet bowtie logo and Bed View Camera ¹ (Regular Cab WT requires available WT Convenience Package) | | | | | |
| Gooseneck/5th Wheel Prep Package | ○ | ○ | ○ | ○ | ○ |
| Hitch platform to accept gooseneck or 5th-wheel hitch; includes hitch platform with tray to accept ball, stamped bed holes with removable caps installed and bed-mounted 7-pin trailer harness (WT, Custom, LT and LTZ require available Gooseneck/5th Wheel Package) | | | | | |
| Heavy-Duty Front Spring/Camper Package (not available with Snow Plow Prep/Camper Package) | ○ | ○ | ○ | ○ | ○ |
| Z71 Off-Road Package (4x4 models) | ○ | - | ○ | ○ | ○ |
| Off-Road suspension with off-road tuned twin-tube Rancho [®] shocks, Hill Descent Control and skid plates; Z71 fender badge replaces standard 4x4 bed-mounted decal on WT, LT and LTZ; LT and LTZ include Z71 grille logo; 2500 HD WT and LT include LT265/70R17E all-terrain tires (not available on DRW models) | | | | | |
| EXTERIOR | | | | | |
| Duramax and Appearance Package (2500 HD Crew Cab 4x4) | - | - | ○ | - | - |
| 20" 10-spoke machined-aluminum wheels with Grazen Metallic-painted accents (Q86), LT275/65R20 all-terrain tires, chrome recovery hooks ⁵ and 4-inch round chrome assist steps (dealer-installed) (not available with Midnight Edition, Z71 Off-Road and Protection Package, Z71 Chrome Sport Edition, Z71 Sport Edition, pickup bed delete or any other assist steps) (requires available Duramax 6.6L Turbo-Diesel V8 engine) | | | | | |
| Z71 Off-Road and Protection Package (4x4 models) | - | - | ○ | ○ | - |
| Z71 Off-Road Package, Chevytec spray-on bedliner with Chevrolet bowtie logo and all-weather floor liners with Z71 logo; 2500 HD LT includes 18" machined-aluminum wheels with Silver-painted accents (PYV) and LT275/70R18E all-terrain tires; LTZ includes 20" 6-spoke polished-aluminum wheels (RTH) and LT275/65R20 all-terrain tires (not available on DRW models; LT requires Double Cab or Crew Cab) | | | | | |

Return To Models

¹ Safety or driver assistance features are no substitute for the driver's responsibility to operate the vehicle in a safe manner. Read the vehicle Owner's Manual for important feature limitations and information. ² Available on select Apple and Android devices. Service availability, features and functionality vary by vehicle, vehicle equipment, trim level, device and the plan you are enrolled in. Some features may require a working electrical system. User terms apply. Device data connection required. Visit onstar.com for details and limitations. ³ Chevrolet Infotainment System functionality varies by model. Full functionality requires compatible Bluetooth and smartphone, and USB connectivity for some devices. ⁴ If you decide to continue service after your trial, your selected subscription plan will automatically renew thereafter. You will be charged at then-current rates. Fees and taxes apply. To cancel you must call SiriusXM at 1-866-635-2349. See SiriusXM Customer Agreement for complete terms at siriusxm.com. All fees and programming subject to change. Certain features require a SiriusXM subscription and the Chevrolet Connected Access plan. See siriusxm.com and onstar.com for details and limitations. ⁵ To avoid the risk of injury, never use recovery hooks to tow a vehicle. For more information, see the Recovery Hooks section of your Owner's Manual.

AVAILABLE PACKAGES (CONTINUED)

● STANDARD ○ AVAILABLE – NOT AVAILABLE

| | WT | CUSTOM | LT | LTZ | HIGH COUNTRY |
|--|----|--------|----|-----|--------------|
| INTERIOR | | | | | |
| WT Convenience Package | ○ | – | – | – | – |
| Remote Keyless Entry, EZ Lift power lock and release tailgate, deep-tinted windows behind front doors, rear-window defogger, cruise control, and outside power-adjustable, manual-folding and manual-extending vertical trailerling mirrors with heated upper glass, auto-dimming upper glass, lower convex mirrors, integrated turn signal indicators, puddle lamps, perimeter lighting and auxiliary lighting; Regular Cab includes power windows with driver express-up/-down and passenger express-down and power door locks | | | | | |
| WT Safety Package | ○ | – | – | – | – |
| Lane Change Alert with Side Blind Zone Alert; Rear Cross Traffic Alert; front and rear chrome bumpers and Front and Rear Park Assist ¹ (requires available WT Convenience Package, 120-volt bed- and instrument panel-mounted power outlets [400 watts shared], integrated trailer brake controller and outside power-adjustable, manual-folding and manual-extending vertical trailerling mirrors with heated upper glass, auto-dimming upper glass, lower convex mirrors, integrated turn signal indicators, puddle lamps, perimeter lighting and auxiliary lighting) | | | | | |
| Custom Convenience Package | – | ○ | – | – | – |
| Remote vehicle starter system, rear-window defogger, LED cargo area lighting in pickup bed, EZ Lift power lock and release tailgate, and integrated trailer brake controller | | | | | |
| Custom Value Package | – | ○ | – | – | – |
| Custom Convenience Package, Infotainment Package, and outside power-adjustable, manual-folding and manual-extending vertical trailerling mirrors with heated upper glass, auto-dimming upper glass, lower convex mirrors, integrated turn signal indicators, puddle lamps, perimeter lighting, auxiliary lighting and interior auto-dimming rearview mirror | | | | | |
| Infotainment Package | – | ○ | – | – | – |
| Up to 3 months of OnStar® Safety & Security coverage; ² available Wi-Fi® Hotspot; ³ Chevrolet Connected Access; ⁴ and SiriusXM® ⁵ 3-month trial subscription to SXM Platinum Plan | | | | | |

| | WT | CUSTOM | LT | LTZ | HIGH COUNTRY |
|---|----|--------|----|-----|--------------|
| INTERIOR (CONTINUED) | | | | | |
| Cloth Rear Seat with Storage Package | – | ○ | ○ | – | – |
| Rear in-seatback left and right storage compartments and center foldout armrest with two cup holders (LT requires available Convenience Package II) | | | | | |
| Uplevel Rear Seat with Storage Package | – | – | ○ | ● | ● |
| Underseat storage, rear in-seatback left and right storage compartments and center foldout armrest with two cup holders (LT requires available Leather Package) | | | | | |
| Convenience Package | – | – | ○ | – | – |
| Dual-zone automatic climate control, 10-way power driver-seat adjuster with power lumbar control, manual tilt/telescoping steering column, rear-window defogger, Keyless Open and Start, remote vehicle starter system, unauthorized entry theft-deterrent system, LED cargo area lighting in pickup bed, LED fog lamps, rear wheelhouse liners on SRW models, heated driver and front outboard passenger seats and heated steering wheel; Double Cab and Crew Cab include front 40/20/40 split-bench seat with underseat storage, two charge-only USB ports ⁶ in second row, and rear 12-volt auxiliary power outlet | | | | | |
| Convenience Package II | – | – | ○ | – | – |
| Instrument panel-mounted 120-volt power outlet and bed-mounted 120-volt power outlet (400 watts shared), Chevrolet Infotainment 3 Plus system ⁷ with available In-Vehicle Apps; ⁸ SiriusXM® with 360L ^{5,9} 3-month trial subscription to SXM Platinum Plan, SD card reader, HD Rear Vision Camera; Hitch Guidance with Hitch View ¹ and Advanced Trailerling System; Double Cab and Crew Cab include Universal Home Remote and power-sliding rear window; Crew Cab includes Cloth Rear Seat with Storage Package (requires available Convenience Package and power-up/-down tailgate with power lock and release or Multi-Flex Tailgate) | | | | | |
| Leather Package (Double Cab and Crew Cab) | – | – | ○ | – | – |
| Jet Black or Gideon leather-appointed front seats; Crew Cab includes Uplevel Rear Seat with Storage Package (requires available Convenience Package II) | | | | | |
| Remote Start Package | – | – | ○ | – | – |
| Remote vehicle starter system and rear-window defogger | | | | | |

Return To Models

¹ Safety or driver assistance features are no substitute for the driver's responsibility to operate the vehicle in a safe manner. Read the vehicle Owner's Manual for important feature limitations and information. ² When you select a monthly plan within 15 days of activating your 1-month trial, you'll receive the next 2 months of the plan you select at no additional charge when you associate an approved payment method on file to your account and authorize recurring payments for your service plan. The amount and frequency of each recurring payment is based upon the service(s) and payment interval(s) you select from the options provided. After the trial expires, OnStar will automatically bill your payment method monthly at then-current standard monthly rates. Plans containing 4G LTE data will be billed every 30 days by AT&T. You may cancel at any time by pushing your blue OnStar button or calling 1-888-466-7827. May not be combined with other offers or retroactively applied. Offer subject to change. ³ Service varies with conditions and location. Requires active service and paid AT&T data plan. Visit onstar.com for details and limitations. Availability subject to change. ⁴ Standard connectivity available only to original purchaser for up to 10 years. Connected Access services are subject to change. Does not include emergency or security services. Diagnostic capabilities vary by model and service plan. Message and data rates may apply. Requires contact method on file and enrollment to receive alerts. Not all issues will deliver alerts. Visit onstar.com for details and limitations. ⁵ If you decide to continue service after your trial, your selected subscription plan will automatically renew thereafter. You will be charged at then-current rates. Fees and taxes apply. To cancel you must call SiriusXM at 1-866-635-2349. See SiriusXM Customer Agreement for complete terms at siriusxm.com. All fees and programming subject to change. ⁶ Not compatible with all devices. ⁷ Chevrolet Infotainment System functionality varies by model. Full functionality requires compatible Bluetooth and smartphone, and USB connectivity for some devices. ⁸ Third-party trademarks are the property of their respective third-party owners and used under agreement. Requires active service plan and paid AT&T vehicle data plan. Visit onstar.com for details and limitations. ⁹ Certain features require a SiriusXM subscription and the Chevrolet Connected Access plan. See siriusxm.com and onstar.com for details and limitations.

AVAILABLE PACKAGES (CONTINUED)

● STANDARD ○ AVAILABLE – NOT AVAILABLE

| | WT | CUSTOM | LT | LTZ | HIGH COUNTRY |
|--|----|--------|----|-----|--------------|
| INTERIOR (CONTINUED) | | | | | |
| All Star Edition (Double Cab and Crew Cab) | – | – | ○ | – | – |
| Convenience Package and Safety Package | | | | | |
| Texas Edition (Double Cab and Crew Cab) | – | – | ○ | – | – |
| Convenience Package, Safety Package and Texas Edition badging (available only in Arkansas, Louisiana, New Mexico, Oklahoma and Texas) | | | | | |
| Safety Confidence Package | ○ | ○ | – | – | – |
| Automatic Emergency Braking ¹ ; Forward Collision Alert ¹ ; steering wheel-mounted audio and phone controls, and Driver Information Center with 4.2-inch diagonal color display; WT includes cruise control (not available with pickup bed delete) | | | | | |
| Safety Package | – | – | ○ | ○ | – |
| Lane Change Alert with Side Blind Zone Alert ¹ ; Rear Cross Traffic Alert ¹ and Front and Rear Park Assist ¹ (LT requires available Convenience Package and outside power-adjustable, manual-folding and manual-extending vertical trailerling mirrors with heated upper glass, auto-dimming upper glass, lower convex mirrors, integrated turn signal indicators, puddle lamps, perimeter lighting and auxiliary lighting; not available with pickup bed delete) | | | | | |
| LTZ Convenience Package | – | – | – | ○ | – |
| Front center floor console with USB ports ² ; SD card reader and auxiliary input jack, power-sliding rear window, Universal Home Remote, power-up/-down tailgate with power lock and release, LED cargo area lighting in pickup bed, and heated and ventilated front bucket seats | | | | | |
| LTZ Convenience Package II | – | – | – | ○ | – |
| Chevrolet Infotainment 3 Premium system ³ with Navigation ⁴ and additional memory for available In-Vehicle Apps ⁵ ; 7-speaker Bose premium audio system with Richbass subwoofer, HD Surround Vision ¹ with two trailer camera provisions, Bed View Camera ¹ and wireless charging ⁶ (requires available LTZ Convenience Package and Safety Package) | | | | | |
| LTZ Plus Package | – | – | – | ○ | – |
| LTZ Convenience Package and Safety Package (not available with LTZ Premium Package, LTZ Texas Edition or pickup bed delete) | | | | | |

| | WT | CUSTOM | LT | LTZ | HIGH COUNTRY |
|--|----|--------|----|-----|--------------|
| INTERIOR (CONTINUED) | | | | | |
| LTZ Premium Package | – | – | – | ○ | – |
| LTZ Convenience Package, LTZ Convenience Package II, Safety Package, Safety Package II, Technology Package, 20" 6-spoke polished-aluminum wheels (RTH) and LT275/65R20 all-terrain tires (not available with LTZ Plus Package, LTZ Texas Edition or pickup bed delete; not available on DRW models) | | | | | |
| LTZ Texas Edition | – | – | – | ○ | – |
| LTZ Convenience Package, Safety Package and Texas Edition badging (available only in Arkansas, Louisiana, New Mexico, Oklahoma and Texas; not available with LTZ Plus Package, LTZ Premium Package or pickup bed delete) | | | | | |
| LTZ Premium Texas Edition | – | – | – | ○ | – |
| LTZ Convenience Package, LTZ Convenience Package II, Safety Package, Safety Package II, Technology Package, 20" 6-spoke polished-aluminum wheels (RTH), LT275/65R20 all-terrain tires and Texas Edition badging (available only in Arkansas, Louisiana, New Mexico, Oklahoma and Texas; not available with LTZ Plus Package, LTZ Premium Package, LTZ Texas Edition or pickup bed delete; not available on DRW models) | | | | | |
| Safety Package II ¹ | – | – | – | ○ | ○ |
| Forward Collision Alert, Lane Departure Warning, Automatic Emergency Braking, IntelliBeam, Following Distance Indicator and Safety Alert Seat (LTZ requires available Safety Package) | | | | | |
| Technology Package | – | – | – | ○ | ○ |
| Rear Camera Mirror ¹ and Head-Up Display; LTZ includes enhanced Driver Information Center (LTZ requires available LTZ Convenience Package II and Safety Package II; not available with pickup bed delete; High Country requires available Safety Package II) | | | | | |
| High Country Deluxe | – | – | – | – | ○ |
| Safety Package II, Technology Package and Gooseneck/5th Wheel Package | | | | | |

Return To Models

¹ Safety or driver assistance features are no substitute for the driver's responsibility to operate the vehicle in a safe manner. Read the vehicle Owner's Manual for important feature limitations and information. ² Not compatible with all devices. ³ Chevrolet Infotainment System functionality varies by model. Full functionality requires compatible Bluetooth and smartphone, and USB connectivity for some devices. ⁴ Map coverage available in the United States, Puerto Rico and Canada. ⁵ Third-party trademarks are the property of their respective third-party owners and used under agreement. Requires active service plan and paid AT&T vehicle data plan. Visit onstar.com for details and limitations. ⁶ The system wirelessly charges one compatible mobile device. Some phones have built-in wireless charging technology and others require a special adaptor/back cover. To check for phone or other device compatibility, see my.chevrolet.com/learn or consult your carrier.

ENGINE SPECIFICATIONS



6.6L V8 GAS Standard on all 2500 HD and 3500 HD models.

Heavy-duty 6-speed automatic transmission

401 hp @ 5200 rpm

464 lb.-ft. of torque @ 4000 rpm

Displacement: 6564 cc (400 cu. in.)

Bore and stroke: 103.25 mm x 98 mm (4.06 in. x 3.86 in.)

Compression ratio: 10.75:1

Block: Cast-iron with nodular iron main caps

Cylinder head: Cast-aluminum

Valvetrain: Overhead valve with Variable Valve Timing (VVT)

Fuel delivery: Direct Injection

Recommended fuel: Regular unleaded or E85



DURAMAX 6.6L TURBO-DIESEL V8 Available on 2500 HD and 3500 HD models.

Allison® 10-speed automatic transmission

445 hp @ 2800 rpm

910 lb.-ft. of torque @ 1600 rpm

Displacement: 6619 cc (403 cu. in.)

Bore and stroke: 103 mm x 99 mm (4.05 in. x 3.89 in.)

Compression ratio: 16.0:1

Block: Cast-iron

Cylinder head: Cast-aluminum

Valvetrain: Overhead valve with 4 valves per cylinder

Fuel delivery: Direct Injection with high-pressure common rail

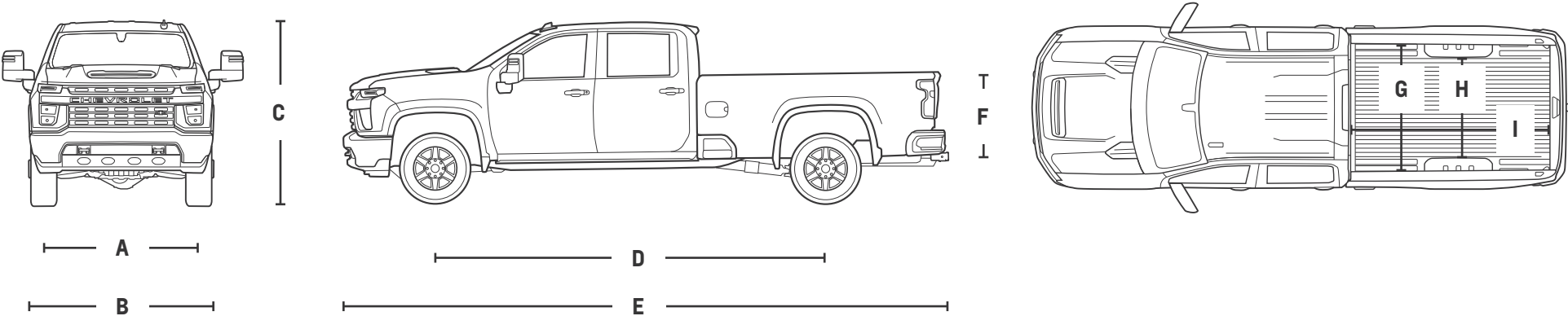
Recommended fuel: Ultra-low-sulfur diesel

MAXIMUM CAPACITIES

| | REGULAR CAB | DOUBLE CAB | CREW CAB |
|---------------------------|-----------------------------------|--|--|
| Fuel tank (approximate) | 36 gallons 28 gallons – Diesel | 36 gallons 29 gallons – Standard Bed Diesel | 36 gallons |
| Cargo volume ¹ | 83.5 cubic feet – Long Bed | 69.6 cubic feet – Standard Bed 83.5 cubic feet – Long Bed | 69.6 cubic feet – Standard Bed 83.5 cubic feet – Long Bed |

DIMENSIONS

| | REGULAR CAB | DOUBLE CAB | CREW CAB |
|---------------------------------|---|--|--|
| A – Front track | 68.1" | 68.1" | 68.1" |
| B – Width | 81.9" – SRW 96.8" – DRW | 81.9" – SRW 96.8" – DRW | 81.9" – SRW 96.8" – DRW |
| C – Height | 79.9" – 2500 HD 80.2" – 3500 HD DRW 80.9" – 3500 HD SRW | 79.8" – 2500 HD Long Bed 80.0" – 2500 HD Standard Bed 80.2" – 3500 HD Long Bed DRW 80.9" – 3500 HD Long Bed SRW | 79.7" – 2500 HD Long Bed 79.8" – 2500 HD Standard Bed 80.0" – 3500 HD Long Bed DRW 80.7" – 3500 HD Long Bed SRW 80.9" – 3500 HD Standard Bed |
| D – Wheelbase | 141.5" | 149.4" – Standard Bed 162.5" – Long Bed | 158.9" – Standard Bed 172.0" – Long Bed |
| E – Length | 235.5" | 240.4" – Standard Bed 256.5" – Long Bed | 250.0" – Standard Bed 266.0" – Long Bed |
| F – Bed height | 21.0" | 21.0" | 21.0" |
| G – Bed width, wall-to-wall | 71.4" | 71.4" | 71.4" |
| H – Width between wheelhousings | 50.5" | 51.8" – Standard Bed 50.5" – Long Bed | 51.8" – Standard Bed 50.5" – Long Bed |
| I – Bed length at floor | 98.3" | 82.3" – Standard Bed 98.3" – Long Bed | 82.3" – Standard Bed 98.3" – Long Bed |
| Rear track | 68.3" – SRW 75.0" – DRW | 68.3" – SRW 75.0" – DRW | 68.3" – SRW 75.0" – DRW |
| Head room (front/rear) | 43.1"/– | 43.0"/39.9" | 43.0"/40.1" |
| Leg room (front/rear) | 44.5"/– | 44.5"/35.2" | 44.5"/43.4" |
| Shoulder room (front/rear) | 66.1"/– | 66.0"/64.9" | 66.0"/65.3" |
| Hip room (front/rear) | 60.9"/– | 61.2"/60.2" | 61.2"/60.2" |



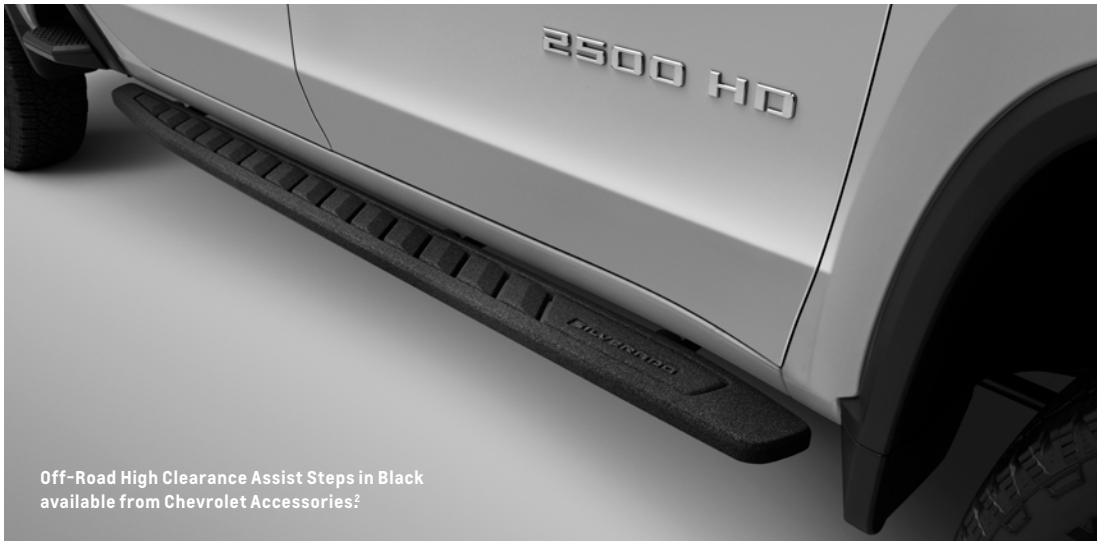
¹ Cargo and load capacity limited by weight and distribution.



Recovery Hooks¹ in Chrome available from Chevrolet Accessories²



Soft Roll-Up Tonneau Cover available from Chevrolet Accessories²



Off-Road High Clearance Assist Steps in Black available from Chevrolet Accessories²



Illuminated Door Sill Plate and Premium All-Weather Floor Liners available from Chevrolet Accessories²

¹ To avoid the risk of injury, never use recovery hooks to tow a vehicle. For more information, see the Recovery Hooks section of your Owner's Manual. ² Chevrolet Accessories are dealer-installed and covered by the GM 3-year/36,000-mile (whichever comes first) New Vehicle Limited Warranty when ordered with your new Silverado. See your dealer for details.



You may also want to consider Silverado 1500. For more details, go to chevrolet.com/trucks/silverado/1500.

IMPORTANT INFORMATION.

You may be discovering Chevrolet through a personalized online shopping experience or enjoying every year of vehicle ownership. Either way, we're committed to providing the tools and programs you need to help you get the most out of your journey.

Build & Price >

Create your perfect Chevrolet from start to finish.

Chevy MyWay¹ >

Engage in a real-time virtual video experience with a Chevy product specialist.

Chevrolet Complete Care >

Enjoy an owner benefit program that provides excellent service and support from day one.

My Chevrolet Rewards² >

Unlock a world of appreciation that's all about you and your Chevrolet. Start earning and redeeming today.

Chevy Truck Legends >

Honoring our dependable, long-lasting trucks and the people who keep them going strong.

Limited Warranty Coverage >

Discover all the ways Chevrolet is committed to providing an excellent ownership experience.



GM, the GM logo, Chevrolet, the Chevrolet logo, and the slogans, emblems, vehicle model names, vehicle body designs and other marks appearing in this brochure are the trademarks and/or service marks of General Motors, its subsidiaries, affiliates or licensors. ©2022 OnStar LLC. All rights reserved. Sirius, XM, SiriusXM and all related marks and logos are trademarks of Sirius XM Radio Inc. Amazon, Alexa and all related marks are trademarks of Amazon.com, Inc. or its affiliates. Apple CarPlay, iPhone, Siri and Apple Music are trademarks of Apple Inc., registered in the U.S. and other countries. The Bluetooth word mark is a registered trademark owned by Bluetooth SIG, Inc., and any use of such mark by Chevrolet is under license. Bose and Richbass are registered trademarks of the Bose Corp. Google, Android and Android Auto are trademarks of Google LLC.

©2022 General Motors. All rights reserved. September 2022

FIND NEW ROADS™

CHEVROLET.COM

¹ Chevy MyWay is available to anyone over 18 in the United States to access and experience via chevrolet.com/myway. ² Must be 18 years or older. Points may be earned and redeemed only at GM entities, My Chevrolet Rewards participating dealers or third party retailers in the United States (excluding Puerto Rico, the U.S. Virgin Islands or Guam). Points are not earned on taxes, fees or body shop repair orders and expire without further notice upon Member Account deactivation. Visit myChevroletrewards.com to view My GM Rewards Terms & Conditions.